

Data Path : Z:\voasrv\HPCHEM1\MSVOA_X\Data\VX121525\
 Data File : VX048880.D
 Acq On : 15 Dec 2025 16:03
 Operator : JC/MD
 Sample : Q3863-12
 Misc : 5.0mL/MSVOA_X/WATER
 ALS Vial : 16 Sample Multiplier: 1

Instrument :
 MSVOA_X
 ClientSampleId :
 TB01-121225

Integration Parameters: RTEINT.P

Integrator: RTE
 Smoothing : ON Filtering: 5
 Sampling : 1 Min Area: 3 % of largest Peak
 Start Thrs: 0.2 Max Peaks: 100
 Stop Thrs : 0 Peak Location: TOP

If leading or trailing edge < 100 prefer < Baseline drop else tangent >
 Peak separation: 5

Method : Z:\voasrv\HPCHEM1\MSVOA_X\Method\82X120425W.M
 Title : SW846 8260

Signal : TIC: VX048880.D\data.ms

peak #	R.T. min	first scan	max scan	last scan	PK TY	peak height	corr. area	corr. % max.	% of total
1	5.373	688	703	720	rBV2	132577	435891	35.27%	7.112%
2	5.538	720	730	755	rVB	229761	711401	57.56%	11.607%
3	5.940	784	796	817	rBV	149854	445205	36.02%	7.264%
4	6.745	918	928	953	rBV	353294	920814	74.50%	15.023%
5	8.635	1231	1238	1253	rBV	741024	1235979	100.00%	20.166%
6	10.037	1462	1468	1488	rBV	691089	1004247	81.25%	16.385%
7	11.061	1631	1636	1650	rBV	459021	644896	52.18%	10.522%
8	12.000	1785	1790	1805	rBV	535520	730740	59.12%	11.922%

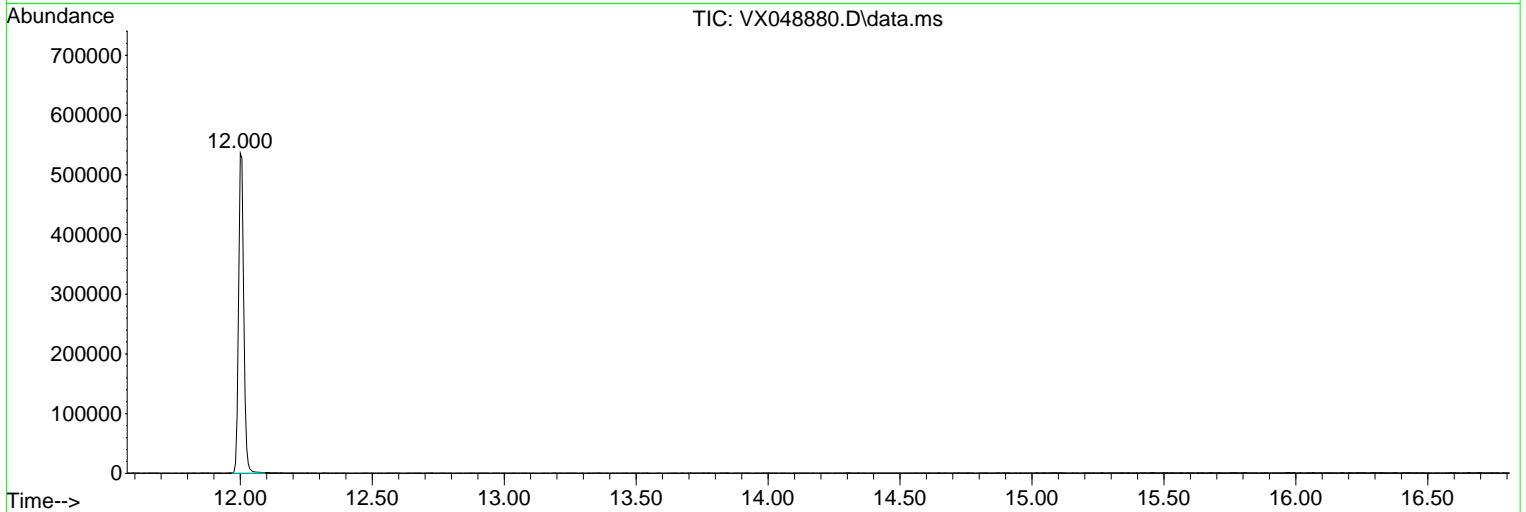
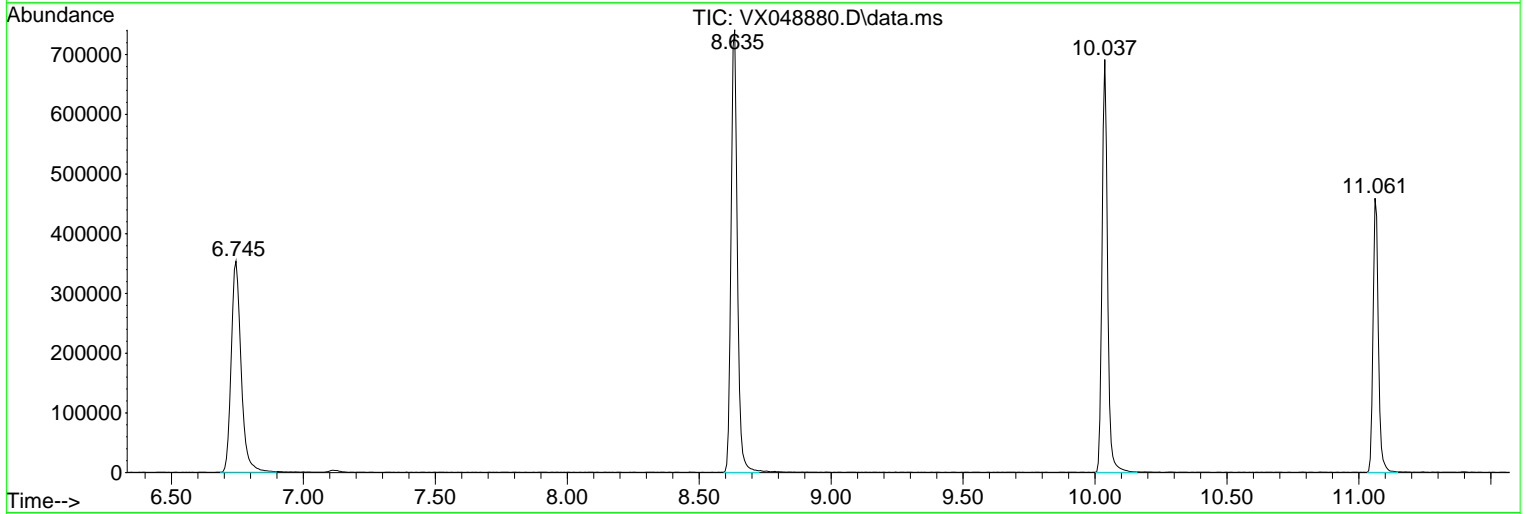
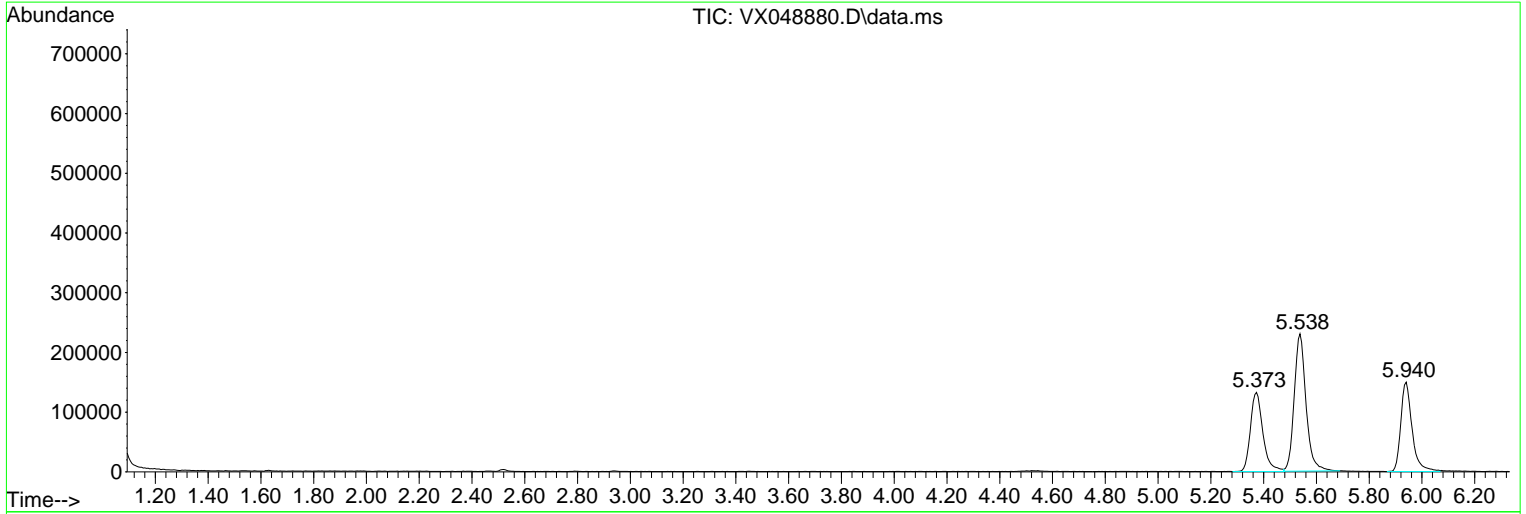
Sum of corrected areas: 6129173

Data Path : Z:\voasrv\HPCHEM1\MSVOA_X\Data\VX121525\
 Data File : VX048880.D
 Acq On : 15 Dec 2025 16:03
 Operator : JC/MD
 Sample : Q3863-12
 Misc : 5.0mL/MSVOA_X/WATER
 ALS Vial : 16 Sample Multiplier: 1

Instrument :
 MSVOA_X
 ClientSampleId :
 TB01-121225

Quant Method : Z:\voasrv\HPCHEM1\MSVOA_X\Method\82X120425W.M
 Quant Title : SW846 8260

TIC Library : C:\Database\NIST20.L
 TIC Integration Parameters: LSCINT.P



Library Search Compound Report

Data Path : Z:\voasrv\HPCHEM1\MSVOA_X\Data\VX121525\
Data File : VX048880.D
Acq On : 15 Dec 2025 16:03
Operator : JC/MD
Sample : Q3863-12
Misc : 5.0mL/MSVOA_X/WATER
ALS Vial : 16 Sample Multiplier: 1

Instrument :
MSVOA_X
ClientSampleId :
TB01-121225

Quant Method : Z:\voasrv\HPCHEM1\MSVOA_X\Method\82X120425W.M
Quant Title : SW846 8260

TIC Library : C:\Database\NIST20.L
TIC Integration Parameters: LSCINT.P

No Library Search Compounds Detected

Data Path : Z:\voasrv\HPCHEM1\MSVOA_X\Data\VX121525\
Data File : VX048880.D
Acq On : 15 Dec 2025 16:03
Operator : JC/MD
Sample : Q3863-12
Misc : 5.0mL/MSVOA_X/WATER
ALS Vial : 16 Sample Multiplier: 1

Instrument :
MSVOA_X
ClientSampleId :
TB01-121225

Quant Method : Z:\voasrv\HPCHEM1\MSVOA_X\Method\82X120425W.M
Quant Title : SW846 8260

TIC Library : C:\Database\NIST20.L
TIC Integration Parameters: LSCINT.P

TIC Top Hit name	RT	EstConc	Units	Response	--Internal Standard--			
					#	RT	Resp	Conc
