

Data Path : Z:\voasrv\HPCHEM1\MSVOA_X\Data\VX121621\
 Data File : VX025822.D
 Acq On : 15 Dec 2021 18:13
 Operator : JC/MD
 Sample : PB141382ZHE#02
 Misc : 5.0mL/MSVOA_X/WATER
 ALS Vial : 14 Sample Multiplier: 1

Instrument :
 MSVOA_X
 ClientSampleId :

Quant Time: Dec 16 07:30:50 2021
 Quant Method : Z:\voasrv\HPCHEM1\MSVOA_X\Method\82X121321W.M
 Quant Title : SW846 8260
 QLast Update : Tue Dec 14 07:02:11 2021
 Response via : Initial Calibration

Compound	R.T.	QIon	Response	Conc	Units	Dev(Min)

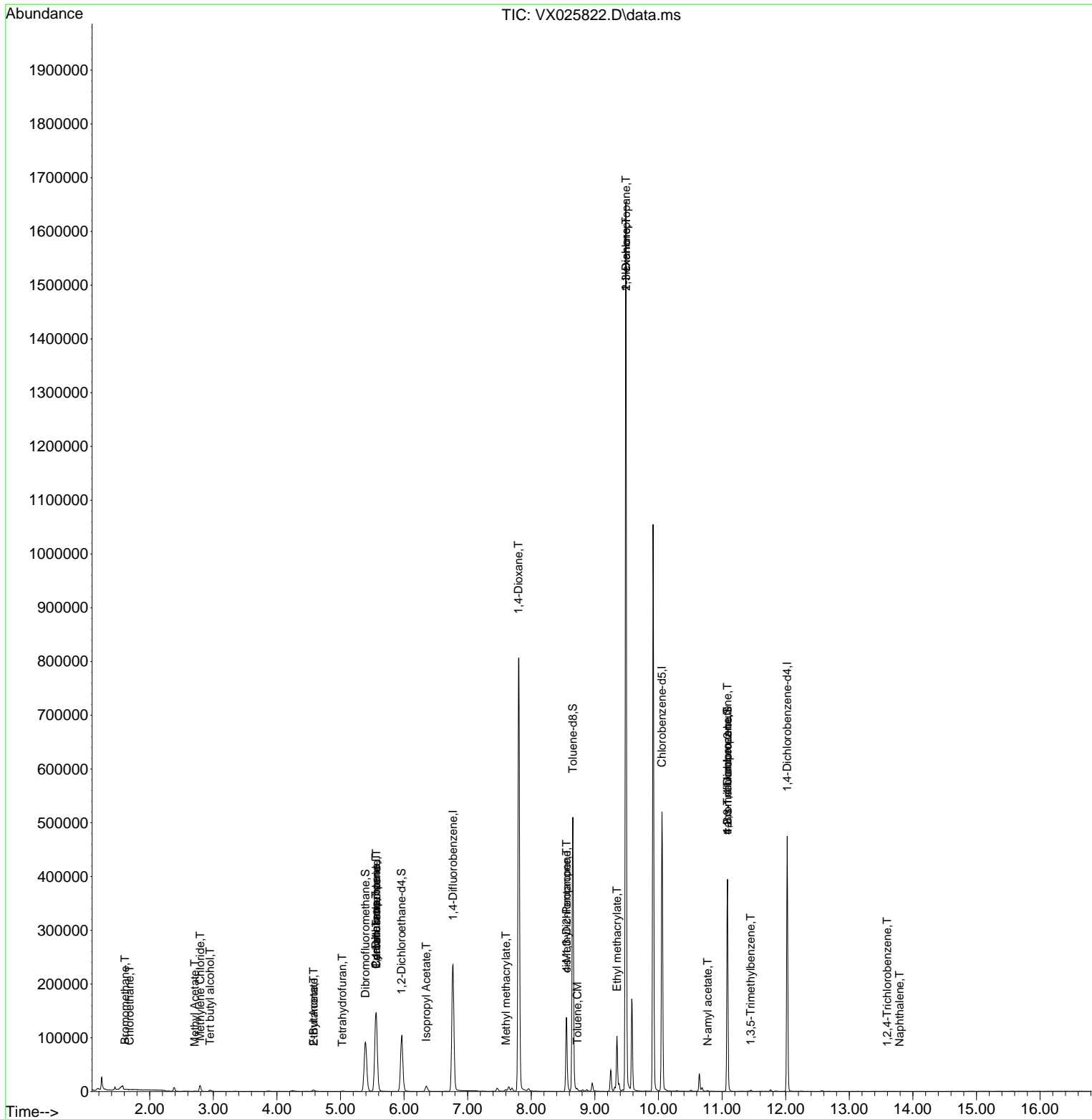
Internal Standards						
1) Pentafluorobenzene	5.562	168	139866	50.000	ug/l	0.00
34) 1,4-Difluorobenzene	6.769	114	242525	50.000	ug/l	0.00
63) Chlorobenzene-d5	10.055	117	235595	50.000	ug/l	0.00
72) 1,4-Dichlorobenzene-d4	12.024	152	94754	50.000	ug/l	0.00
System Monitoring Compounds						
33) 1,2-Dichloroethane-d4	5.958	65	95227	47.320	ug/l	0.00
Spiked Amount	50.000	Range	78 - 117	Recovery	=	94.640%
35) Dibromofluoromethane	5.391	113	79314	46.893	ug/l	0.00
Spiked Amount	50.000	Range	75 - 124	Recovery	=	93.780%
50) Toluene-d8	8.653	98	296439	48.103	ug/l	0.00
Spiked Amount	50.000	Range	92 - 112	Recovery	=	96.200%
62) 4-Bromofluorobenzene	11.085	95	102657	43.853	ug/l	0.00
Spiked Amount	50.000	Range	83 - 123	Recovery	=	87.700%
Target Compounds						
						Qvalue
5) Bromomethane	1.611	94	328	0.265	ug/l #	73
6) Chloroethane	1.685	64	298	0.237	ug/l #	42
11) Tert butyl alcohol	2.946	59	1803	4.466	ug/l #	73
16) Acetone	2.380	43	7600	Below Cal		98
18) Methyl Acetate	2.709	43	1016	0.331	ug/l	91
20) Methylene Chloride	2.794	84	5004	0.513	ug/l	94
25) 2-Butanone	4.574	43	4268	3.153	ug/l #	89
29) Tetrahydrofuran	5.025	42	295	0.343	ug/l #	44
31) Cyclohexane	5.556	56	3383	1.382	ug/l #	42
36) 1,1-Dichloropropene	5.556	75	11383	4.963	ug/l #	50
37) Ethyl Acetate	4.574	43	4268	1.675	ug/l #	70
38) Carbon Tetrachloride	5.562	117	14777	5.537	ug/l #	16
43) Isopropyl Acetate	6.348	43	12829	3.125	ug/l	97
48) Methyl methacrylate	7.604	41	4351	2.250	ug/l #	12
49) 1,4-Dioxane	7.799	88	63	1.493	ug/l #	1
51) 4-Methyl-2-Pentanone	8.555	43	49022	18.240	ug/l #	50
52) Toluene	8.726	92	923	0.212	ug/l	92
54) cis-1,3-Dichloropropene	8.555	75	22730	8.236	ug/l #	63
56) Ethyl methacrylate	9.348	69	600	0.223	ug/l #	1
57) 1,3-Dichloropropane	9.488	76	14572	4.752	ug/l #	42
59) 2-Hexanone	9.488	43	191271	93.926	ug/l #	51
74) N-amyl acetate	10.774	43	1126	0.407	ug/l #	46
76) 1,2,3-Trichloropropane	11.085	75	51412	23.681	ug/l #	39
80) 1,3,5-Trimethylbenzene	11.451	105	1209	0.212	ug/l	86
81) trans-1,4-Dichloro-2-b...	11.085	75	51412	73.419	ug/l #	10
93) 1,2,4-Trichlorobenzene	13.597	180	19	3.380	ug/l #	13
95) Naphthalene	13.792	128	52	2.419	ug/l #	69

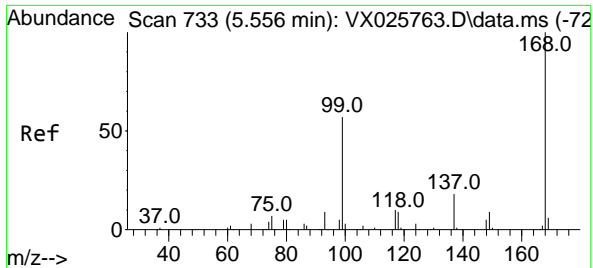
(#) = qualifier out of range (m) = manual integration (+) = signals summed

Data Path : Z:\voasrv\HPCHEM1\MSVOA_X\Data\VX121621\
 Data File : VX025822.D
 Acq On : 15 Dec 2021 18:13
 Operator : JC/MD
 Sample : PB141382ZHE#02
 Misc : 5.0mL/MSVOA_X/WATER
 ALS Vial : 14 Sample Multiplier: 1

Instrument :
 MSVOA_X
 ClientSampleId :

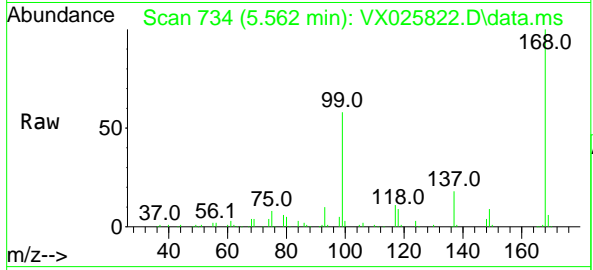
Quant Time: Dec 16 07:30:50 2021
 Quant Method : Z:\voasrv\HPCHEM1\MSVOA_X\Method\82X121321W.M
 Quant Title : SW846 8260
 QLast Update : Tue Dec 14 07:02:11 2021
 Response via : Initial Calibration



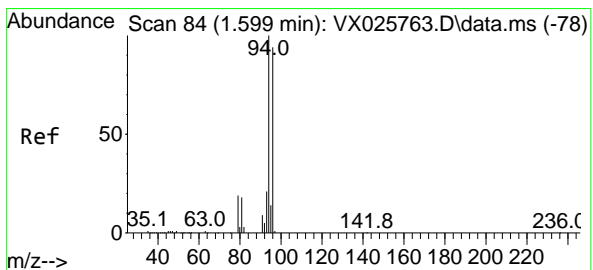
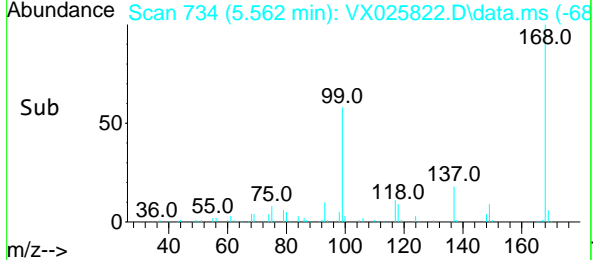
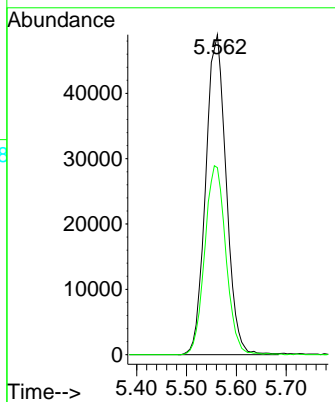


#1
 Pentafluorobenzene
 Concen: 50.000 ug/l
 RT: 5.562 min Scan# 71
 Delta R.T. 0.006 min
 Lab File: VX025822.D
 Acq: 15 Dec 2021 18:13

Instrument : MSVOA_X
 ClientSampleId :

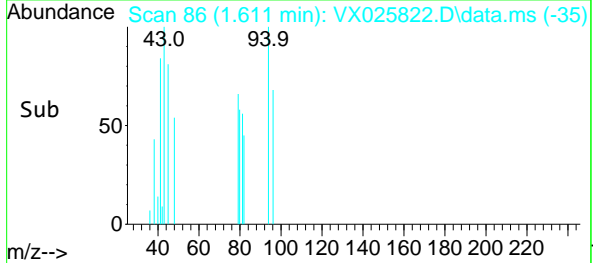
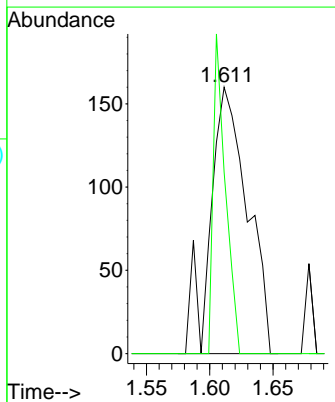
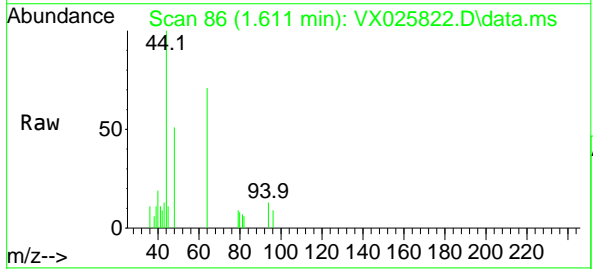


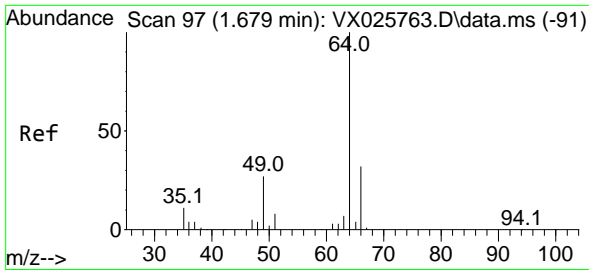
Tgt Ion:168 Resp: 139866
 Ion Ratio Lower Upper
 168 100
 99 58.5 45.8 68.8



#5
 Bromomethane
 Concen: 0.265 ug/l
 RT: 1.611 min Scan# 86
 Delta R.T. 0.012 min
 Lab File: VX025822.D
 Acq: 15 Dec 2021 18:13

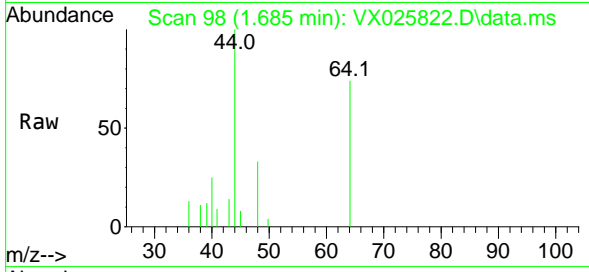
Tgt Ion: 94 Resp: 328
 Ion Ratio Lower Upper
 94 100
 96 68.1 75.0 112.4#



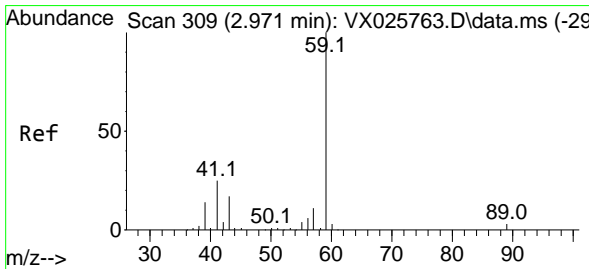
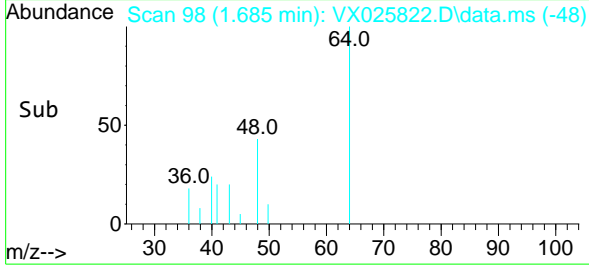
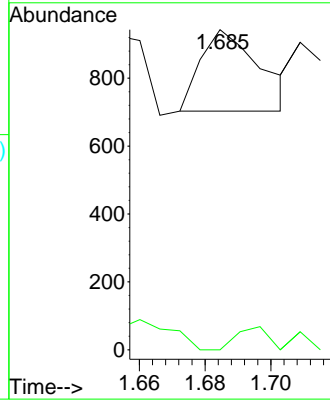


#6
 Chloroethane
 Concen: 0.237 ug/l
 RT: 1.685 min Scan# 91
 Delta R.T. 0.006 min
 Lab File: VX025822.D
 Acq: 15 Dec 2021 18:13

Instrument :
 MSVOA_X
 ClientSampleId :

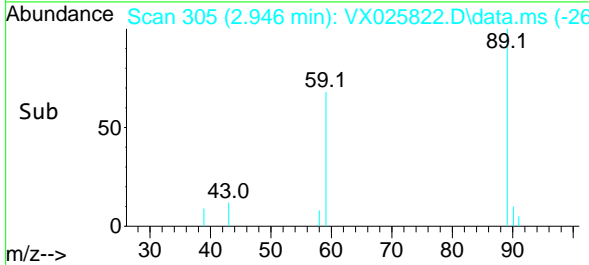
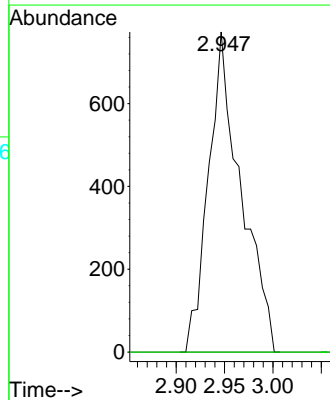
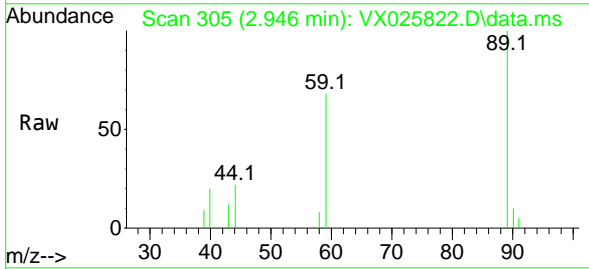


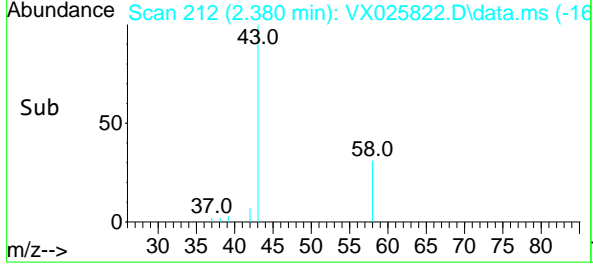
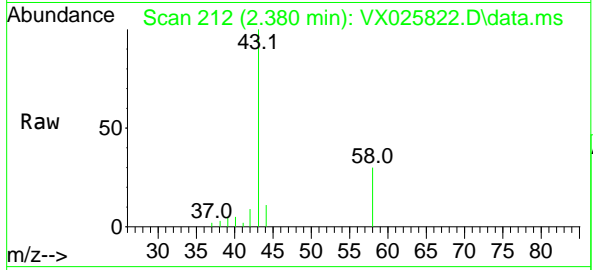
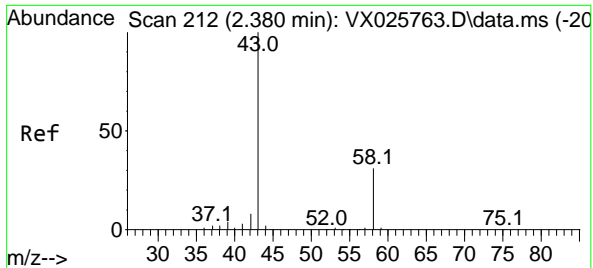
Tgt Ion: 64 Resp: 298
 Ion Ratio Lower Upper
 64 100
 66 0.0 25.9 38.9#



#11
 Tert butyl alcohol
 Concen: 4.466 ug/l
 RT: 2.946 min Scan# 305
 Delta R.T. -0.025 min
 Lab File: VX025822.D
 Acq: 15 Dec 2021 18:13

Tgt Ion: 59 Resp: 1803
 Ion Ratio Lower Upper
 59 100
 57 0.0 8.2 12.2#

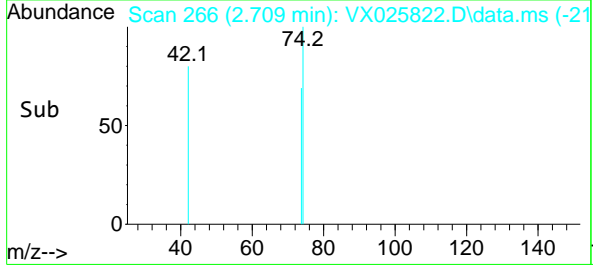
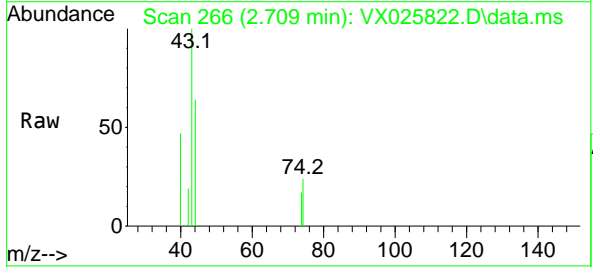
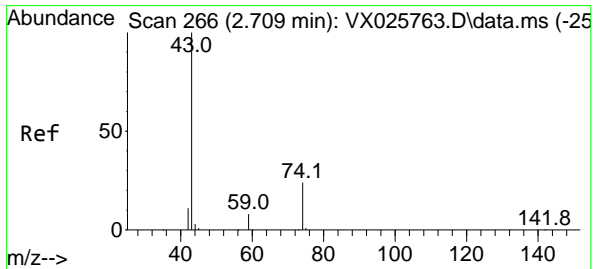
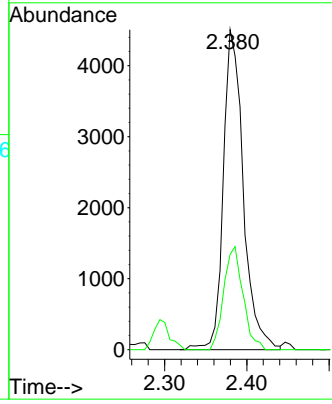




#16
 Acetone
 Concen: Below Cal
 RT: 2.380 min Scan# 216
 Delta R.T. -0.000 min
 Lab File: VX025822.D
 Acq: 15 Dec 2021 18:13

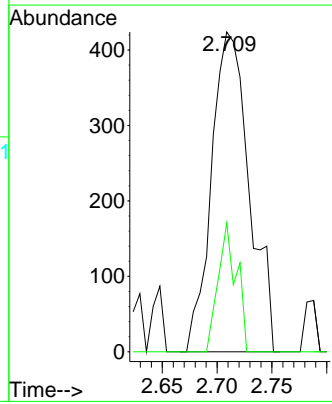
Instrument : MSVOA_X
 ClientSampleId :

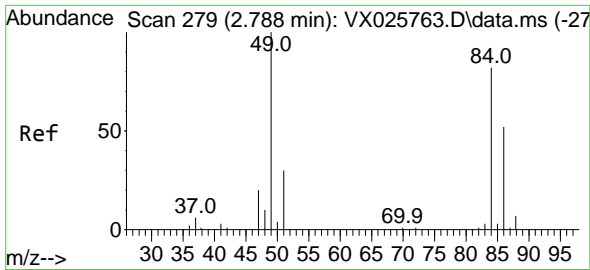
Tgt Ion	Resp	Lower	Upper
43	7600	100	
58	29.8	24.8	37.2



#18
 Methyl Acetate
 Concen: 0.331 ug/l
 RT: 2.709 min Scan# 266
 Delta R.T. -0.000 min
 Lab File: VX025822.D
 Acq: 15 Dec 2021 18:13

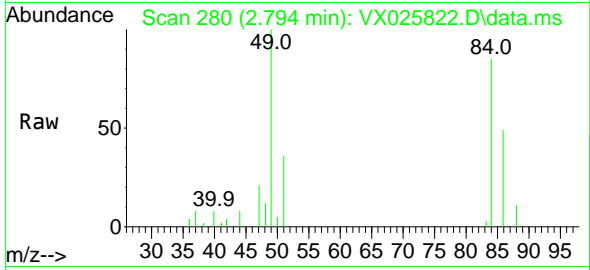
Tgt Ion	Resp	Lower	Upper
43	1016	100	
74	19.7	19.1	28.7





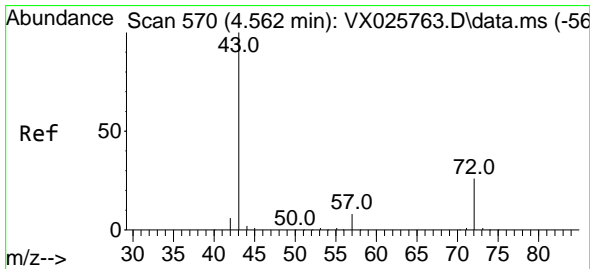
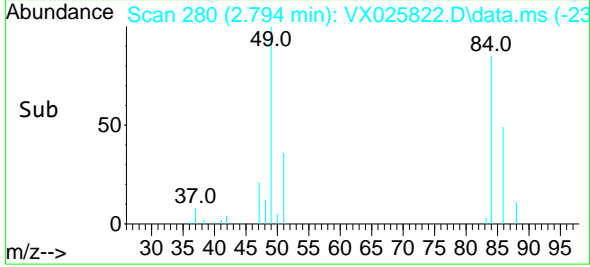
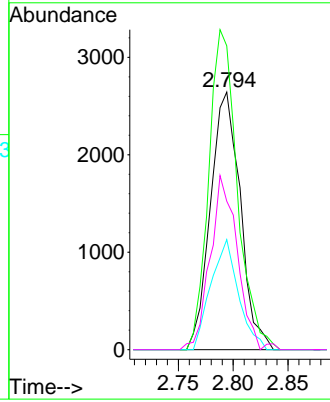
#20
 Methylene Chloride
 Concen: 0.513 ug/l
 RT: 2.794 min Scan# 21
 Delta R.T. 0.006 min
 Lab File: VX025822.D
 Acq: 15 Dec 2021 18:13

Instrument :
 MSVOA_X
 ClientSampleId :



Tgt Ion: 84 Resp: 5004

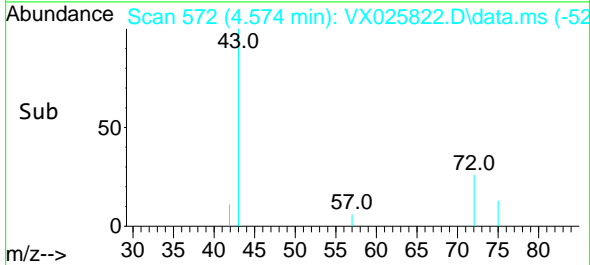
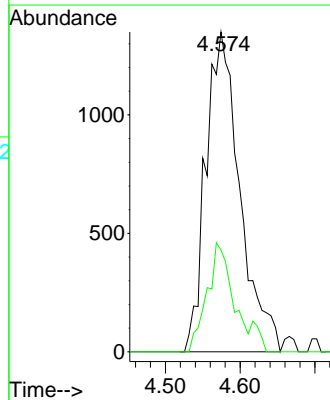
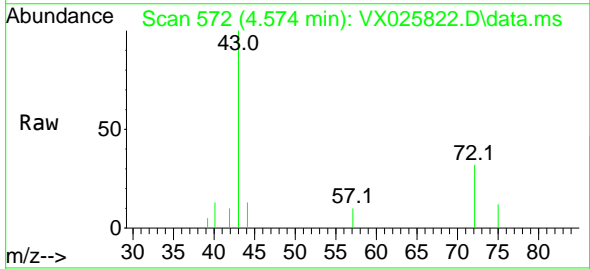
Ion	Ratio	Lower	Upper
84	100		
49	118.0	97.1	145.7
51	42.7	29.3	43.9
86	57.6	50.8	76.2

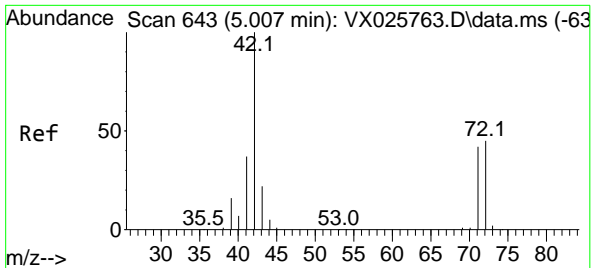


#25
 2-Butanone
 Concen: 3.153 ug/l
 RT: 4.574 min Scan# 572
 Delta R.T. 0.012 min
 Lab File: VX025822.D
 Acq: 15 Dec 2021 18:13

Tgt Ion: 43 Resp: 4268

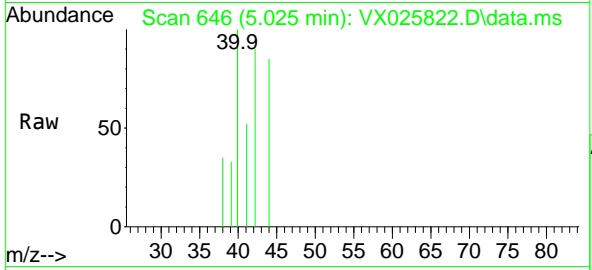
Ion	Ratio	Lower	Upper
43	100		
72	31.9	21.0	31.4#





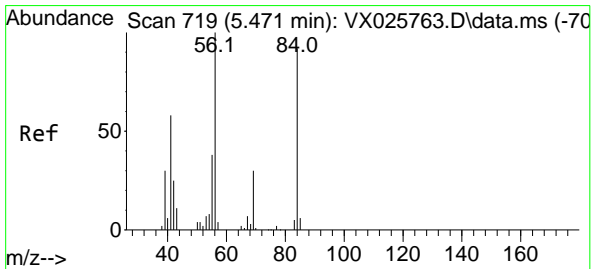
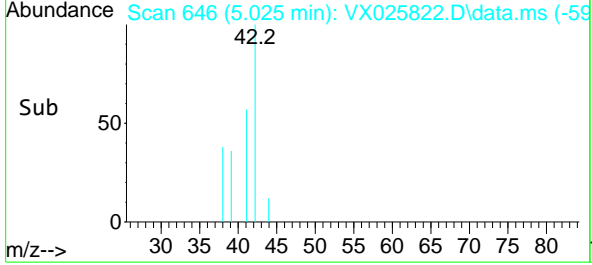
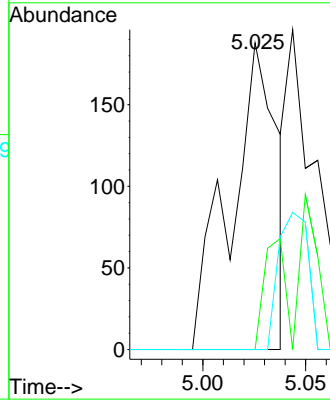
#29
 Tetrahydrofuran
 Concen: 0.343 ug/l
 RT: 5.025 min Scan# 646
 Delta R.T. 0.018 min
 Lab File: VX025822.D
 Acq: 15 Dec 2021 18:13

Instrument :
 MSVOA_X
 ClientSampleId :



Tgt Ion: 42 Resp: 295

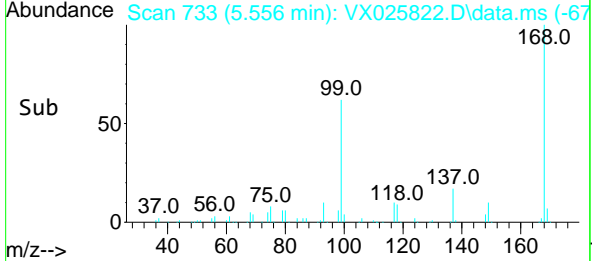
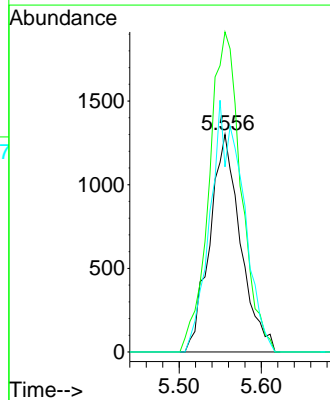
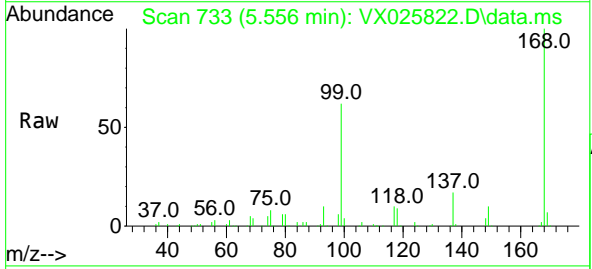
Ion	Ratio	Lower	Upper
42	100		
72	16.3	37.0	55.6#
71	0.0	34.1	51.1#

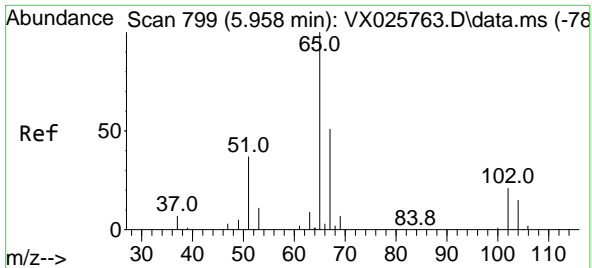


#31
 Cyclohexane
 Concen: 1.382 ug/l
 RT: 5.556 min Scan# 733
 Delta R.T. 0.085 min
 Lab File: VX025822.D
 Acq: 15 Dec 2021 18:13

Tgt Ion: 56 Resp: 3383

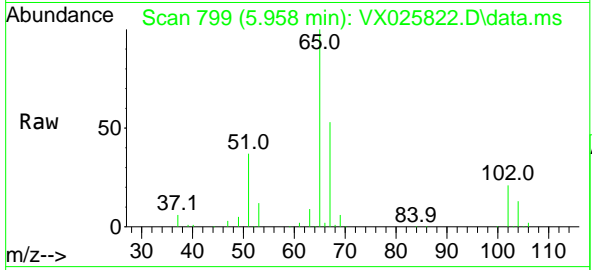
Ion	Ratio	Lower	Upper
56	100		
69	147.2	23.9	35.9#
84	85.2	73.2	109.8



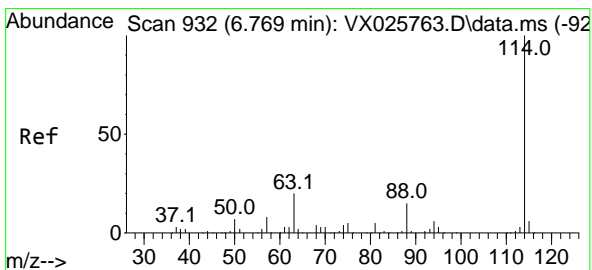
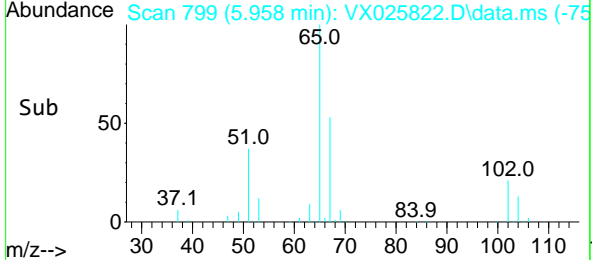
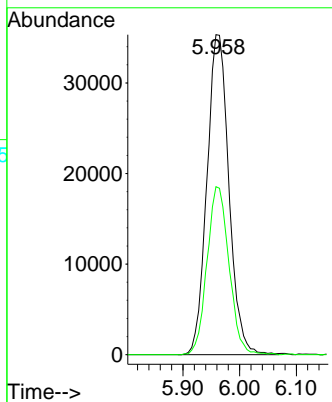


#33
 1,2-Dichloroethane-d4
 Concen: 47.320 ug/l
 RT: 5.958 min Scan# 799
 Delta R.T. -0.000 min
 Lab File: VX025822.D
 Acq: 15 Dec 2021 18:13

Instrument : MSVOA_X
 ClientSampleId :

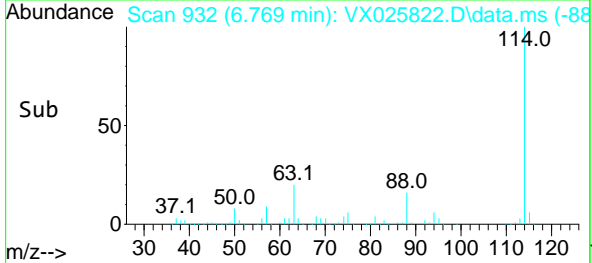
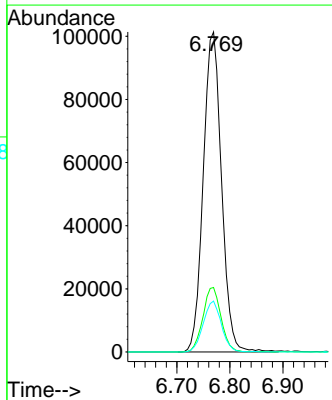
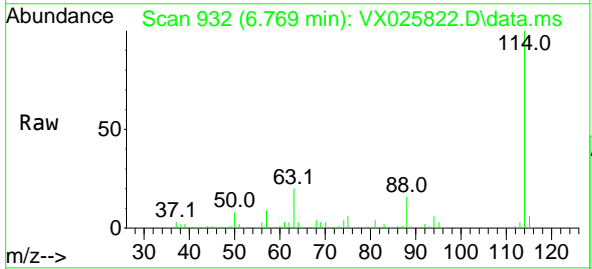


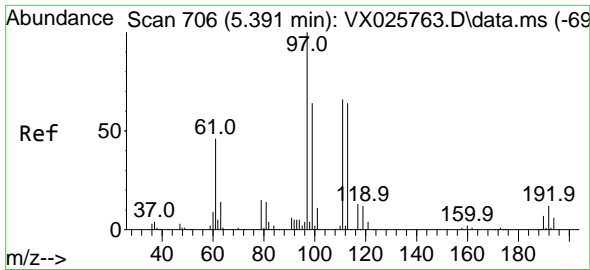
Tgt Ion: 65 Resp: 95227
 Ion Ratio Lower Upper
 65 100
 67 52.5 0.0 103.4



#34
 1,4-Difluorobenzene
 Concen: 50.000 ug/l
 RT: 6.769 min Scan# 932
 Delta R.T. -0.000 min
 Lab File: VX025822.D
 Acq: 15 Dec 2021 18:13

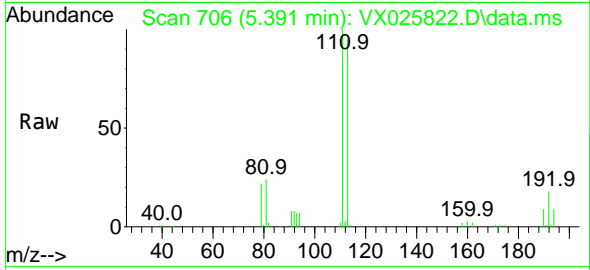
Tgt Ion: 114 Resp: 242525
 Ion Ratio Lower Upper
 114 100
 63 20.2 0.0 40.0
 88 15.9 0.0 30.6



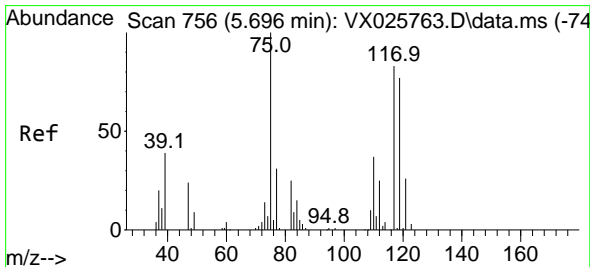
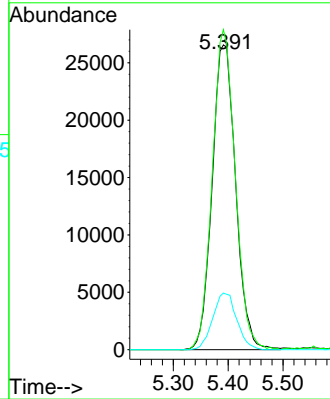
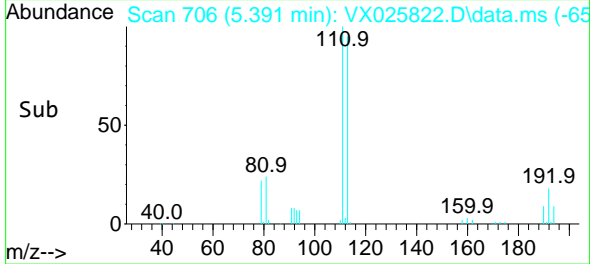


#35
 Dibromofluoromethane
 Concen: 46.893 ug/l
 RT: 5.391 min Scan# 706
 Delta R.T. -0.000 min
 Lab File: VX025822.D
 Acq: 15 Dec 2021 18:13

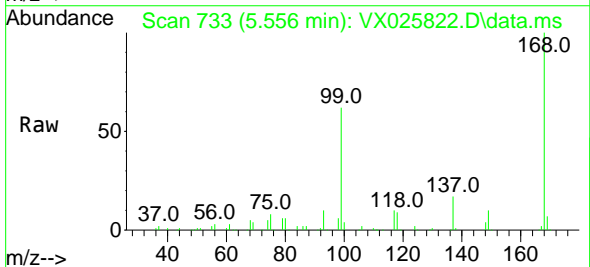
Instrument : MSVOA_X
 ClientSampleId :



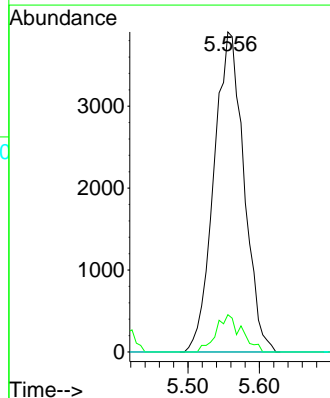
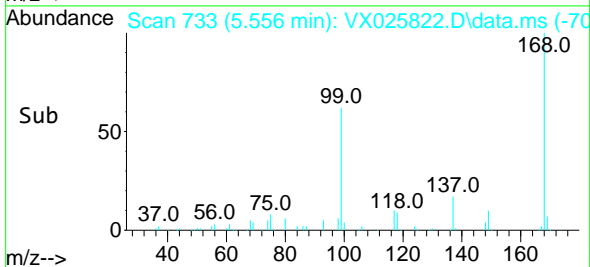
Tgt Ion:113 Resp: 79314
 Ion Ratio Lower Upper
 113 100
 111 102.3 81.8 122.8
 192 18.9 15.0 22.4

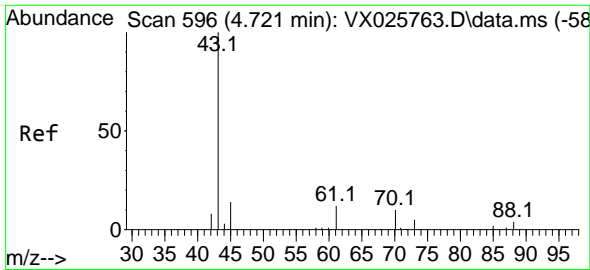


#36
 1,1-Dichloropropene
 Concen: 4.963 ug/l
 RT: 5.556 min Scan# 733
 Delta R.T. -0.140 min
 Lab File: VX025822.D
 Acq: 15 Dec 2021 18:13



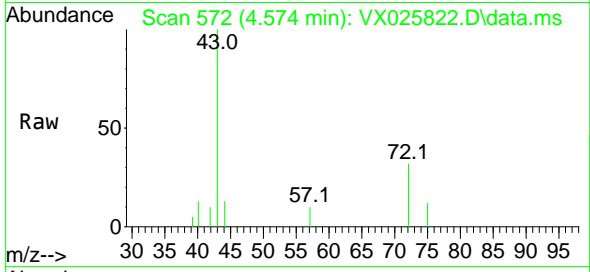
Tgt Ion: 75 Resp: 11383
 Ion Ratio Lower Upper
 75 100
 110 9.9 18.2 54.6#
 77 0.0 24.7 37.1#





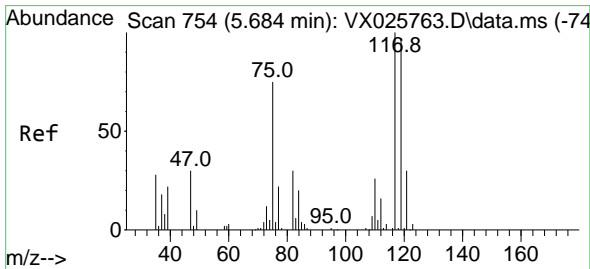
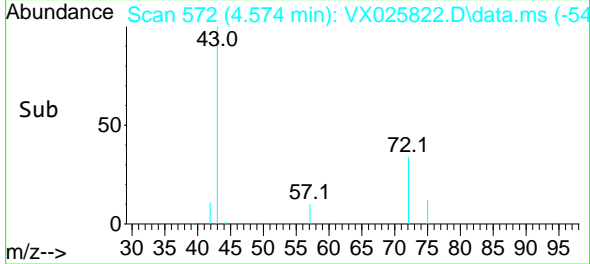
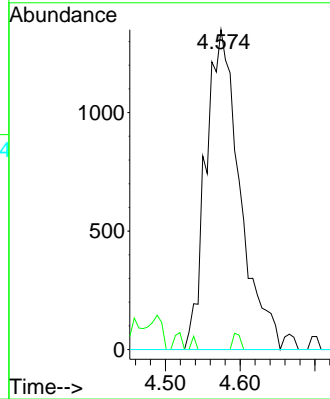
#37
 Ethyl Acetate
 Concen: 1.675 ug/l
 RT: 4.574 min Scan# 51
 Delta R.T. -0.147 min
 Lab File: VX025822.D
 Acq: 15 Dec 2021 18:13

Instrument : MSVOA_X
 ClientSampleId :

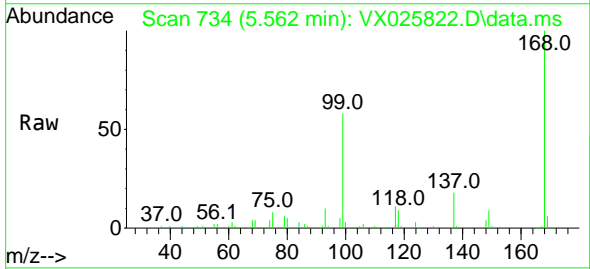


Tgt Ion: 43 Resp: 4268

Ion	Ratio	Lower	Upper
43	100		
61	1.1	10.7	16.1#
70	0.0	8.5	12.7#

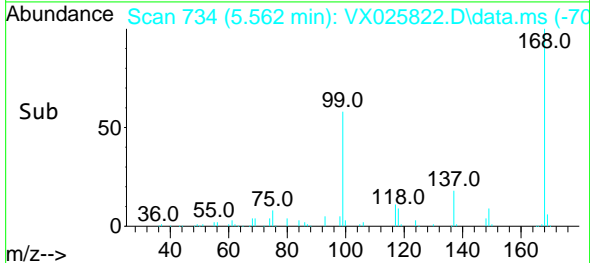
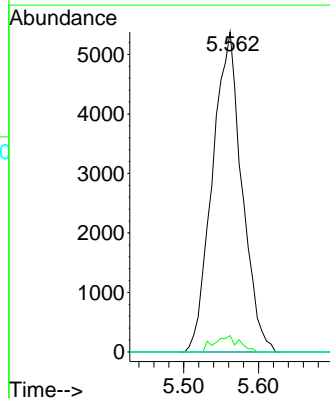


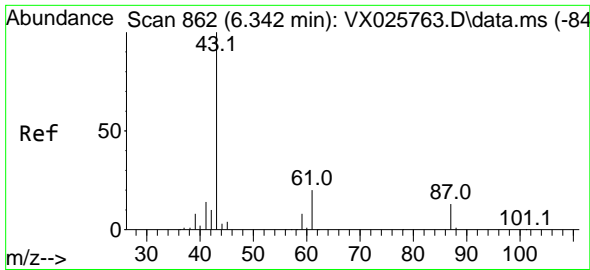
#38
 Carbon Tetrachloride
 Concen: 5.537 ug/l
 RT: 5.562 min Scan# 734
 Delta R.T. -0.122 min
 Lab File: VX025822.D
 Acq: 15 Dec 2021 18:13



Tgt Ion: 117 Resp: 14777

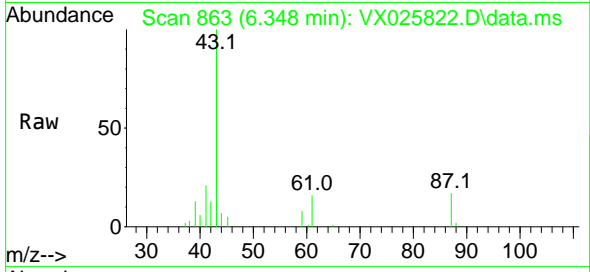
Ion	Ratio	Lower	Upper
117	100		
119	5.1	77.2	115.8#
121	0.0	23.8	35.8#



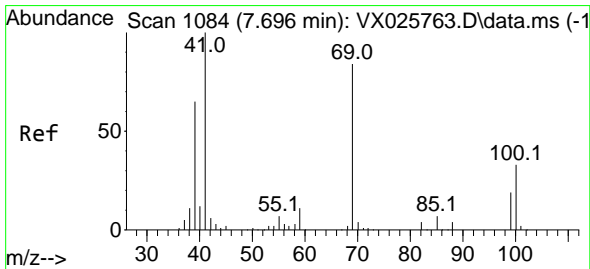
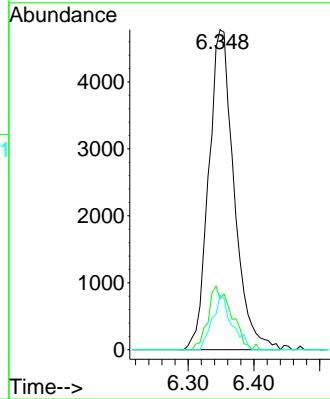
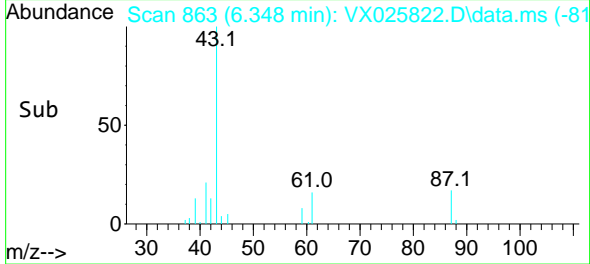


#43
 Isopropyl Acetate
 Concen: 3.125 ug/l
 RT: 6.348 min Scan# 80
 Delta R.T. 0.006 min
 Lab File: VX025822.D
 Acq: 15 Dec 2021 18:13

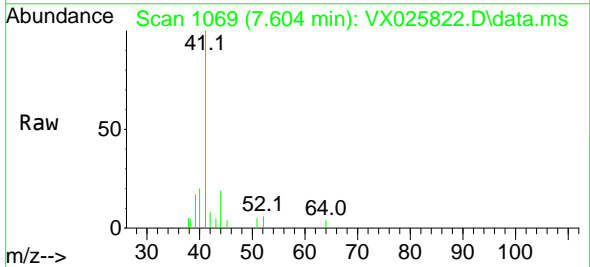
Instrument :
 MSVOA_X
 ClientSampleId :



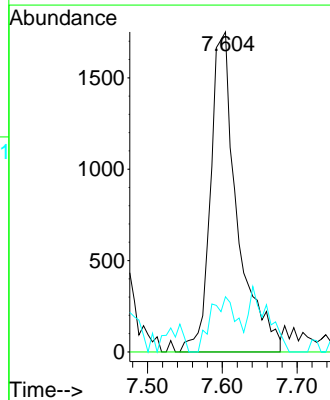
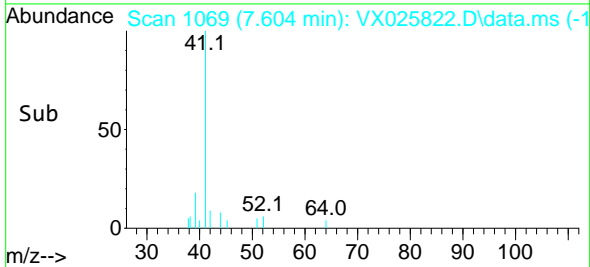
Tgt Ion: 43 Resp: 12829
 Ion Ratio Lower Upper
 43 100
 61 18.2 15.7 23.5
 87 13.2 11.2 16.8

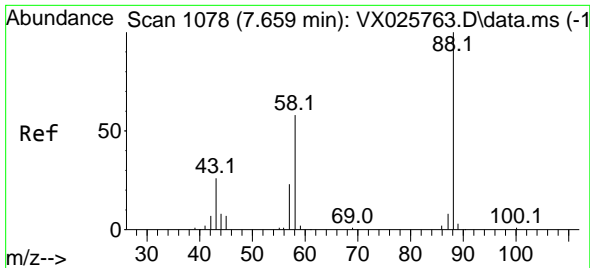


#48
 Methyl methacrylate
 Concen: 2.250 ug/l
 RT: 7.604 min Scan# 1069
 Delta R.T. -0.092 min
 Lab File: VX025822.D
 Acq: 15 Dec 2021 18:13



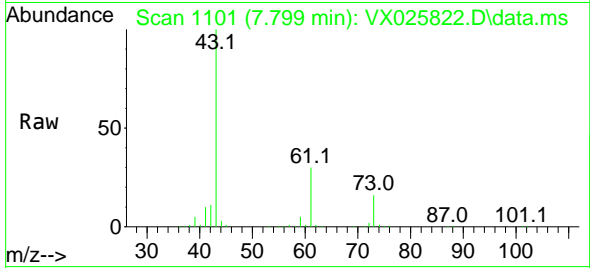
Tgt Ion: 41 Resp: 4351
 Ion Ratio Lower Upper
 41 100
 69 0.0 67.3 100.9#
 39 0.0 50.2 75.2#



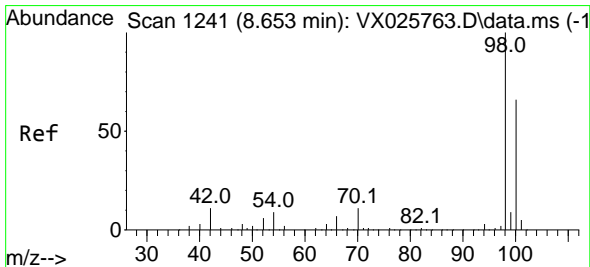
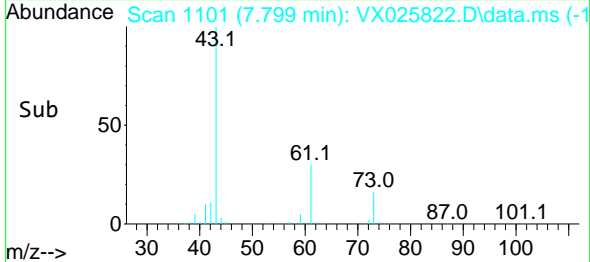
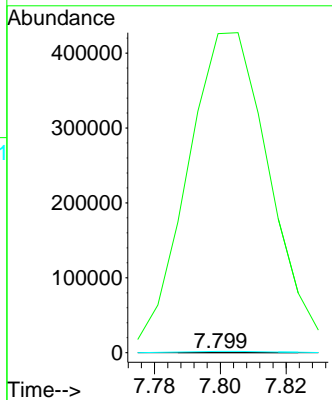


#49
 1,4-Dioxane
 Concen: 1.493 ug/l
 RT: 7.799 min Scan# 1101
 Delta R.T. 0.140 min
 Lab File: VX025822.D
 Acq: 15 Dec 2021 18:13

Instrument :
 MSVOA_X
 ClientSampleId :

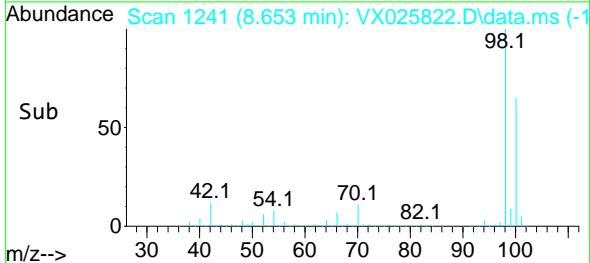
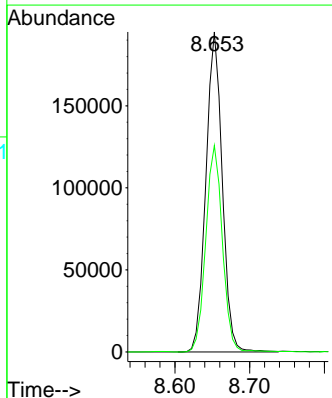
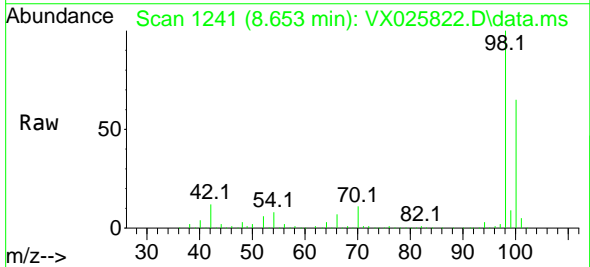


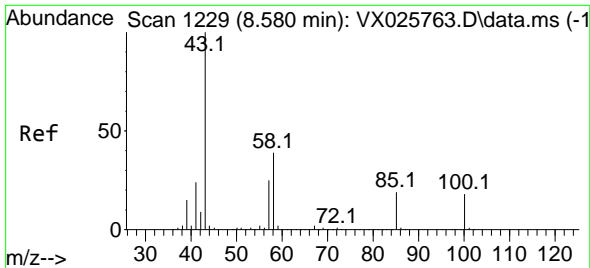
Tgt Ion: 88 Resp: 63
 Ion Ratio Lower Upper
 88 100
 43 1210727.0 25.3 37.9#
 58 5557.1 51.8 77.6#



#50
 Toluene-d8
 Concen: 48.103 ug/l
 RT: 8.653 min Scan# 1241
 Delta R.T. -0.000 min
 Lab File: VX025822.D
 Acq: 15 Dec 2021 18:13

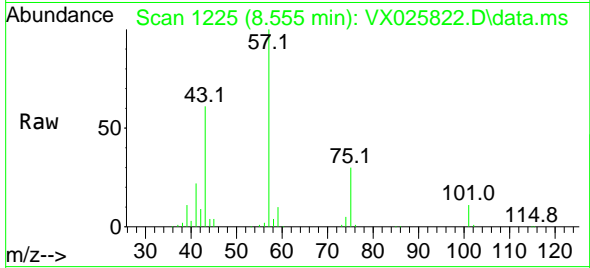
Tgt Ion: 98 Resp: 296439
 Ion Ratio Lower Upper
 98 100
 100 65.8 52.6 78.8



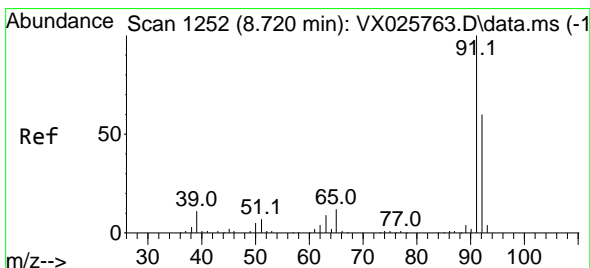
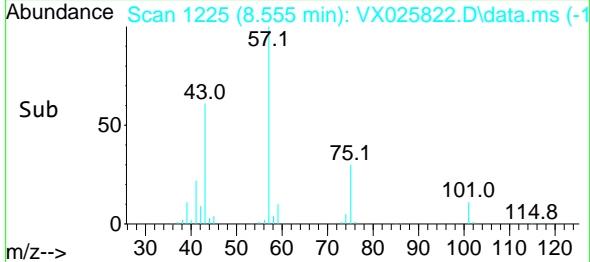
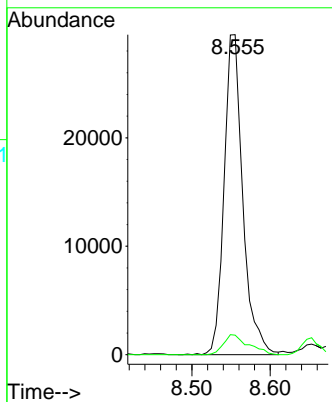


#51
 4-Methyl-2-Pentanone
 Concen: 18.240 ug/l
 RT: 8.555 min Scan# 11
 Delta R.T. -0.025 min
 Lab File: VX025822.D
 Acq: 15 Dec 2021 18:13

Instrument :
 MSVOA_X
 ClientSampleId :

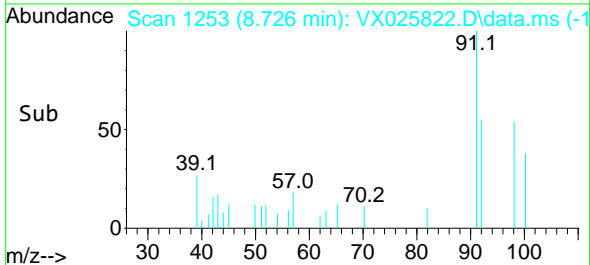
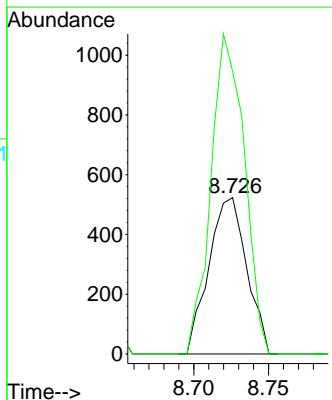
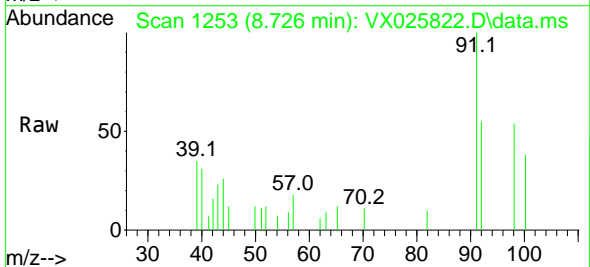


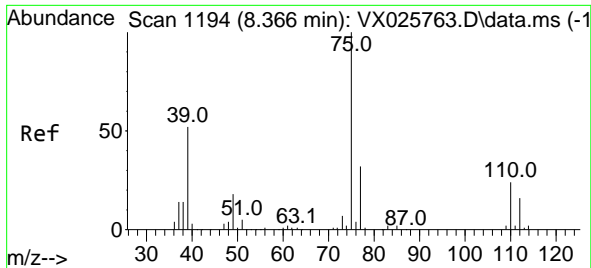
Tgt Ion: 43 Resp: 49022
 Ion Ratio Lower Upper
 43 100
 58 8.3 30.8 46.2#



#52
 Toluene
 Concen: 0.212 ug/l
 RT: 8.726 min Scan# 1253
 Delta R.T. 0.006 min
 Lab File: VX025822.D
 Acq: 15 Dec 2021 18:13

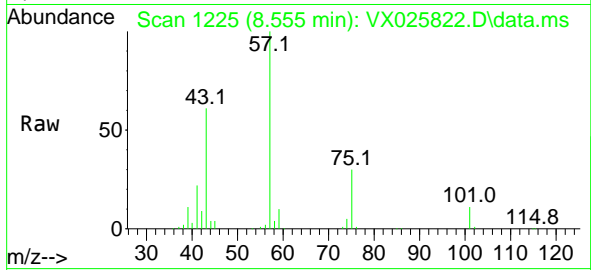
Tgt Ion: 92 Resp: 923
 Ion Ratio Lower Upper
 92 100
 91 180.6 136.0 204.0



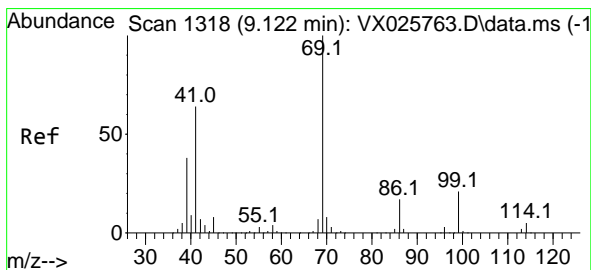
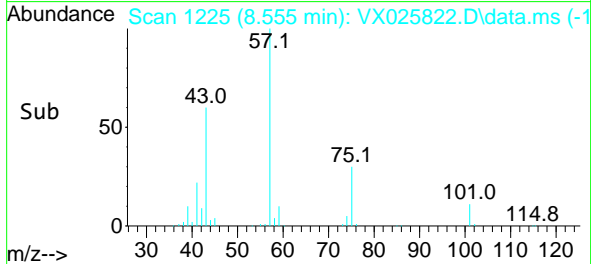
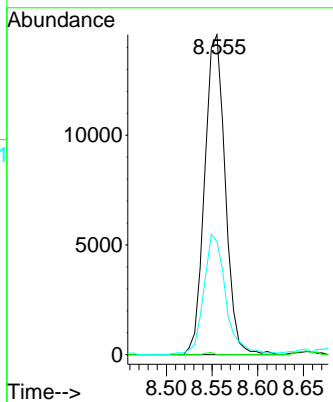


#54
 cis-1,3-Dichloropropene
 Concen: 8.236 ug/l
 RT: 8.555 min Scan# 1194
 Delta R.T. 0.189 min
 Lab File: VX025822.D
 Acq: 15 Dec 2021 18:13

Instrument : MSVOA_X
 ClientSampleId :

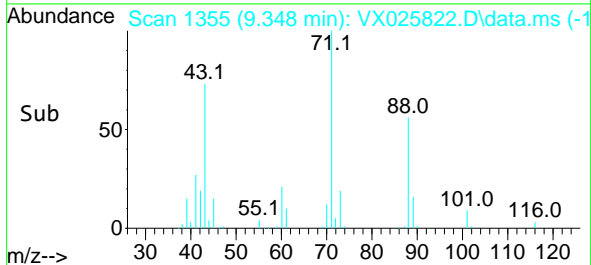
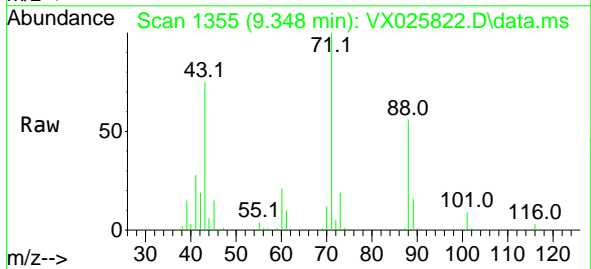
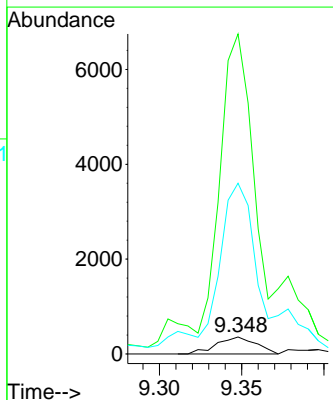


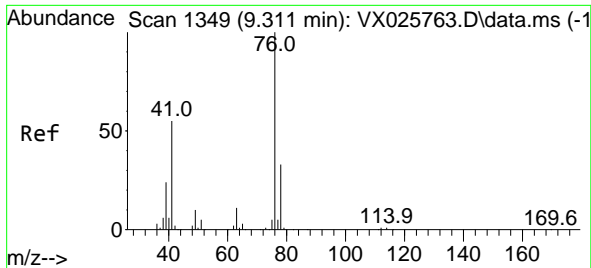
Tgt Ion: 75 Resp: 22730
 Ion Ratio Lower Upper
 75 100
 77 0.0 25.3 37.9#
 39 34.8 41.4 62.0#



#56
 Ethyl methacrylate
 Concen: 0.223 ug/l
 RT: 9.348 min Scan# 1355
 Delta R.T. 0.225 min
 Lab File: VX025822.D
 Acq: 15 Dec 2021 18:13

Tgt Ion: 69 Resp: 600
 Ion Ratio Lower Upper
 69 100
 41 1699.0 52.8 79.2#
 39 1048.7 32.5 48.7#

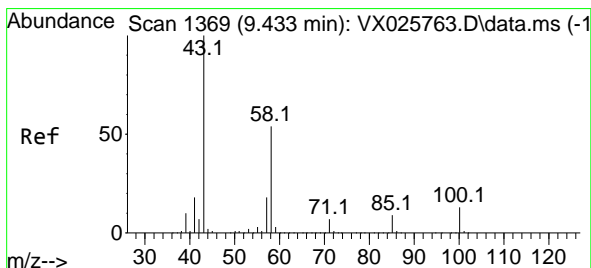
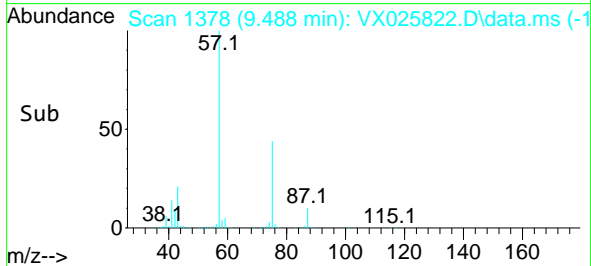
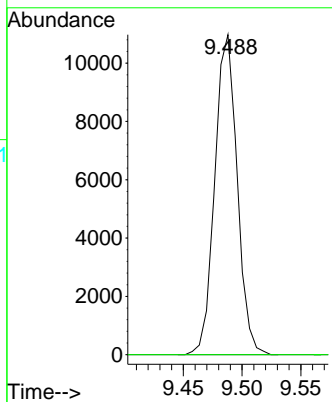
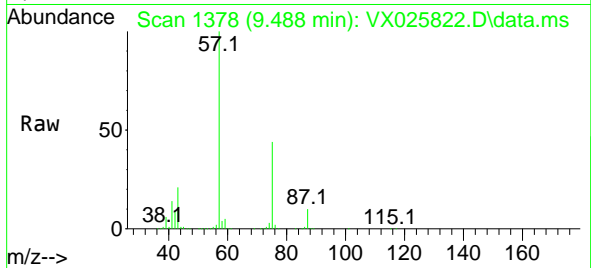




#57
 1,3-Dichloropropane
 Concen: 4.752 ug/l
 RT: 9.488 min Scan# 1378
 Delta R.T. 0.177 min
 Lab File: VX025822.D
 Acq: 15 Dec 2021 18:13

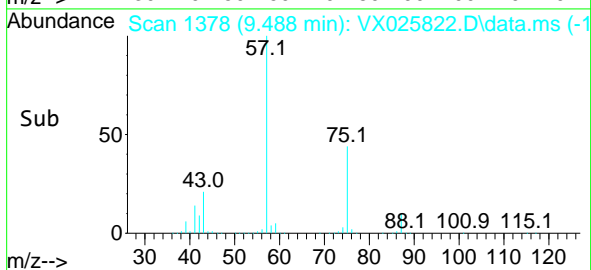
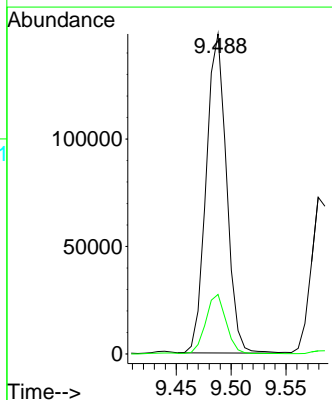
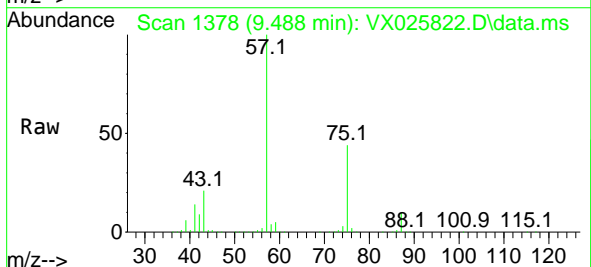
Instrument : MSVOA_X
 ClientSampleId :

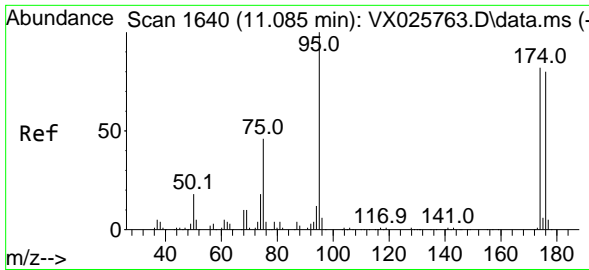
Tgt Ion: 76 Resp: 14572
 Ion Ratio Lower Upper
 76 100
 78 0.0 26.0 39.0#



#59
 2-Hexanone
 Concen: 93.926 ug/l
 RT: 9.488 min Scan# 1378
 Delta R.T. 0.055 min
 Lab File: VX025822.D
 Acq: 15 Dec 2021 18:13

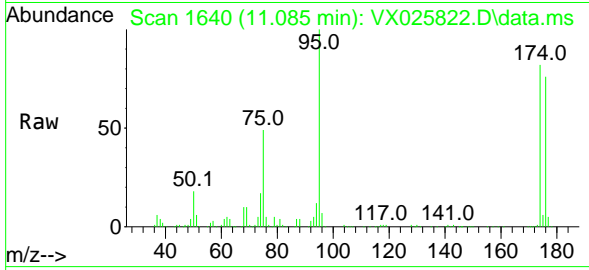
Tgt Ion: 43 Resp: 191271
 Ion Ratio Lower Upper
 43 100
 58 19.0 26.9 80.6#



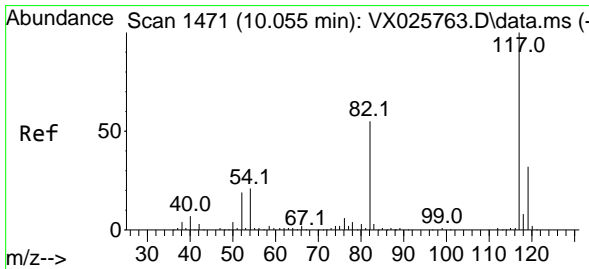
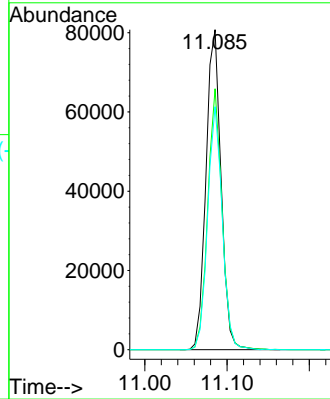
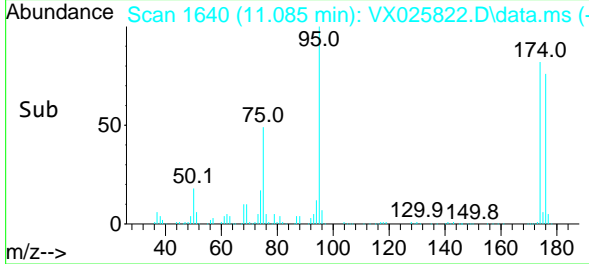


#62
 4-Bromofluorobenzene
 Concen: 43.853 ug/l
 RT: 11.085 min Scan# 1
 Delta R.T. -0.000 min
 Lab File: VX025822.D
 Acq: 15 Dec 2021 18:13

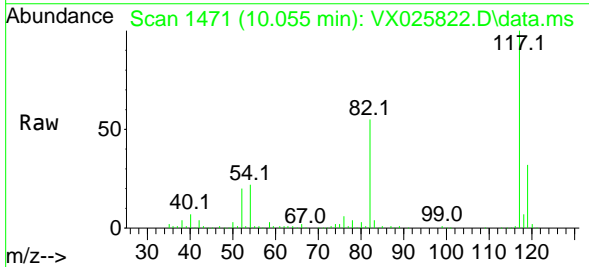
Instrument :
 MSVOA_X
 ClientSampleId :



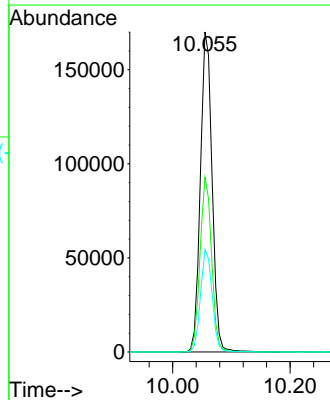
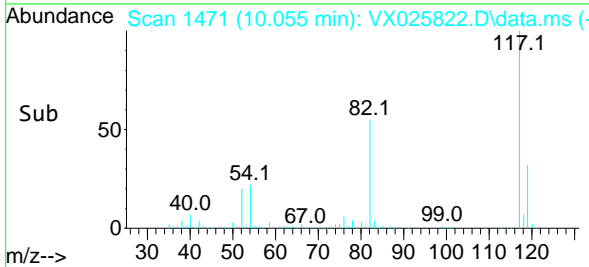
Tgt Ion: 95 Resp: 102657
 Ion Ratio Lower Upper
 95 100
 174 77.7 0.0 157.4
 176 73.8 0.0 154.6

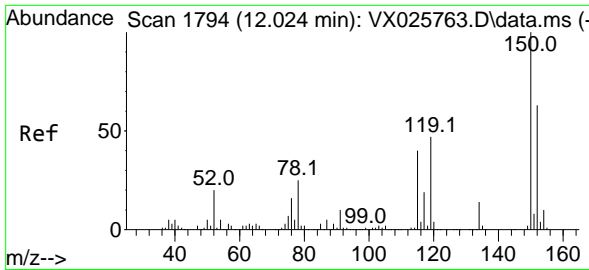


#63
 Chlorobenzene-d5
 Concen: 50.000 ug/l
 RT: 10.055 min Scan# 1471
 Delta R.T. -0.000 min
 Lab File: VX025822.D
 Acq: 15 Dec 2021 18:13



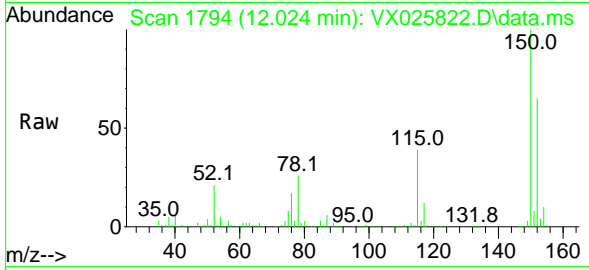
Tgt Ion: 117 Resp: 235595
 Ion Ratio Lower Upper
 117 100
 82 54.6 43.8 65.6
 119 31.9 25.2 37.8



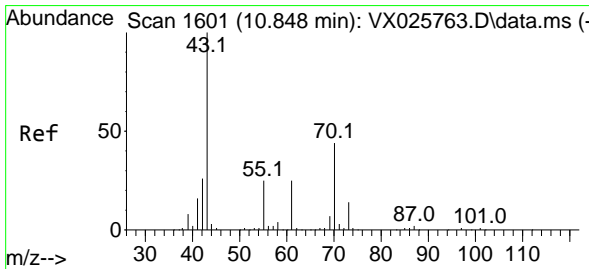
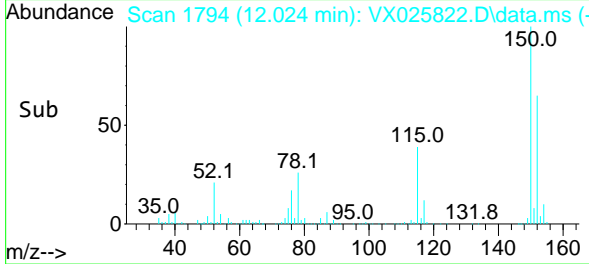
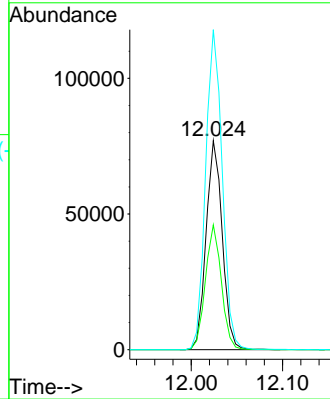


#72
 1,4-Dichlorobenzene-d4
 Concen: 50.000 ug/l
 RT: 12.024 min Scan# 11
 Delta R.T. -0.000 min
 Lab File: VX025822.D
 Acq: 15 Dec 2021 18:13

Instrument : MSVOA_X
 ClientSampleId :

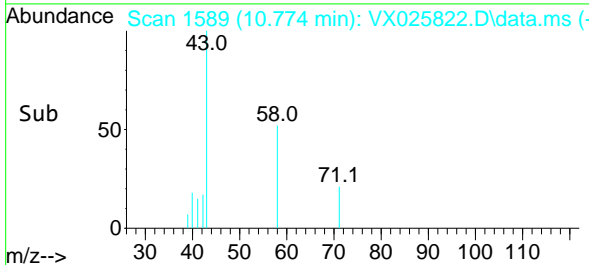
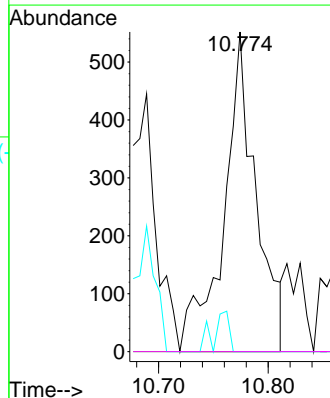
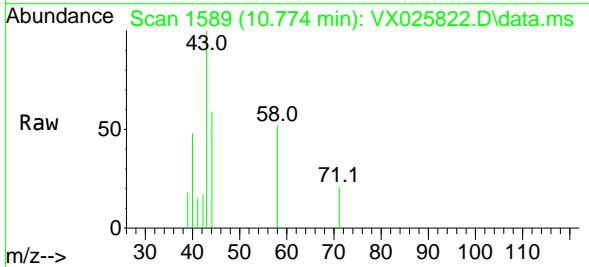


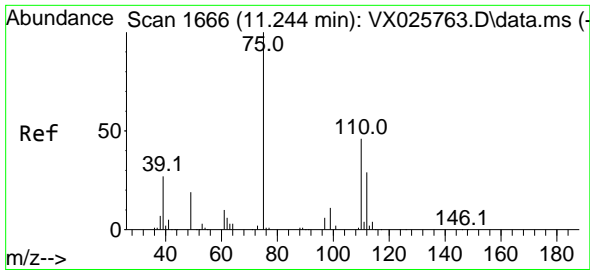
Tgt Ion:152 Resp: 94754
 Ion Ratio Lower Upper
 152 100
 115 59.1 41.3 123.9
 150 157.4 0.0 351.8



#74
 N-amy1 acetate
 Concen: 0.407 ug/l
 RT: 10.774 min Scan# 1589
 Delta R.T. -0.073 min
 Lab File: VX025822.D
 Acq: 15 Dec 2021 18:13

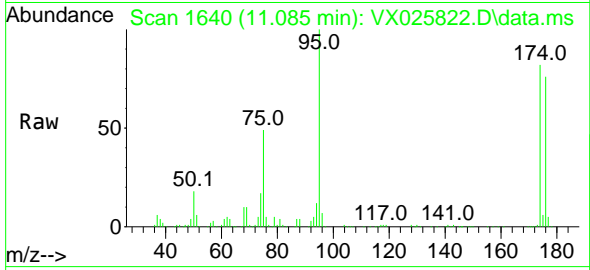
Tgt Ion: 43 Resp: 1126
 Ion Ratio Lower Upper
 43 100
 70 0.0 34.1 51.1#
 55 6.1 19.2 28.8#
 61 0.0 19.0 28.4#



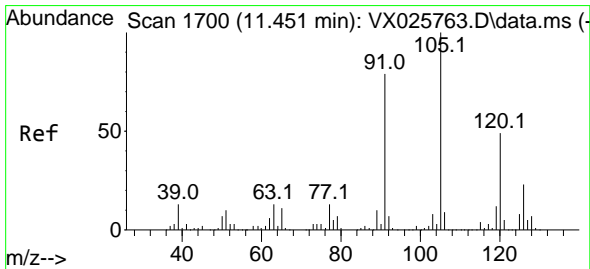
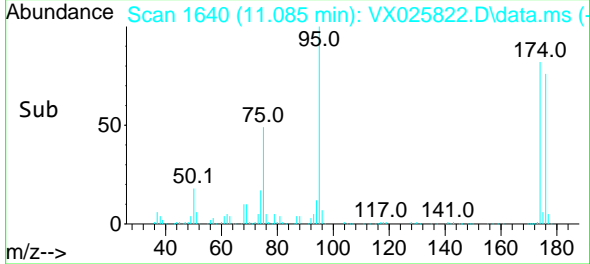
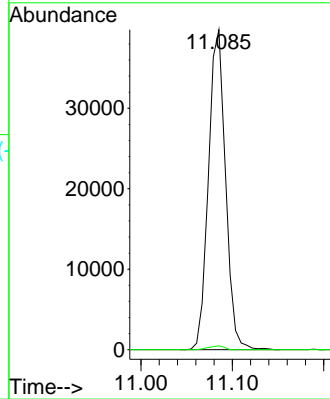


#76
 1,2,3-Trichloropropane
 Concen: 23.681 ug/l
 RT: 11.085 min Scan# 1100
 Delta R.T. -0.159 min
 Lab File: VX025822.D
 Acq: 15 Dec 2021 18:13

Instrument : MSVOA_X
 ClientSampleId :

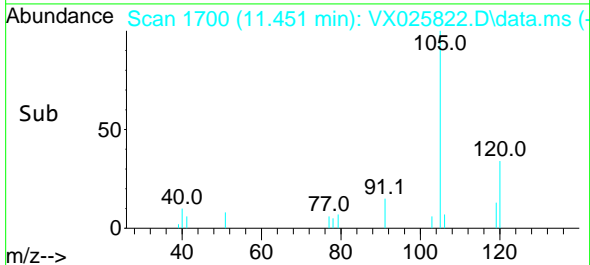
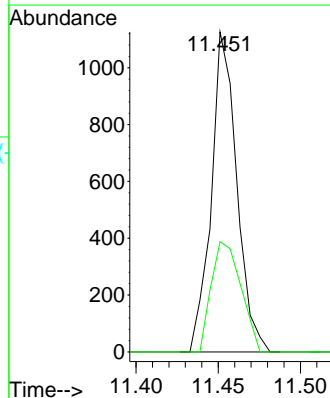
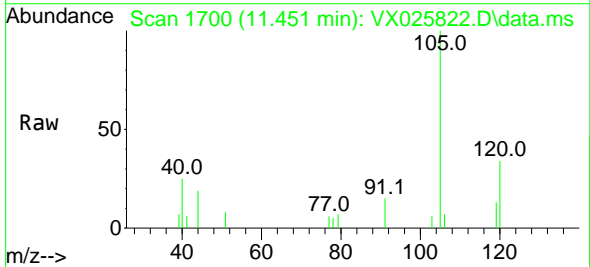


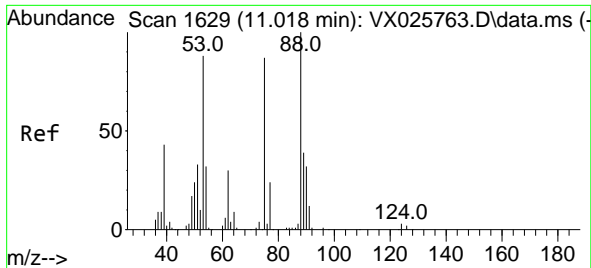
Tgt Ion: 75 Resp: 51412
 Ion Ratio Lower Upper
 75 100
 77 1.1 19.0 57.0#



#80
 1,3,5-Trimethylbenzene
 Concen: 0.212 ug/l
 RT: 11.451 min Scan# 1700
 Delta R.T. -0.000 min
 Lab File: VX025822.D
 Acq: 15 Dec 2021 18:13

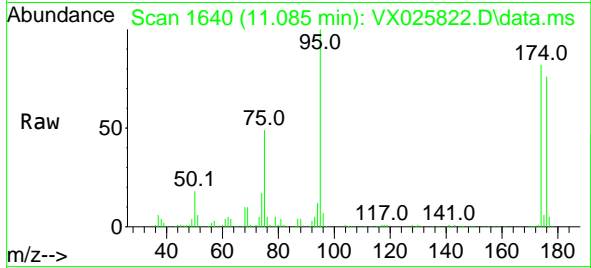
Tgt Ion: 105 Resp: 1209
 Ion Ratio Lower Upper
 105 100
 120 40.0 24.9 74.7



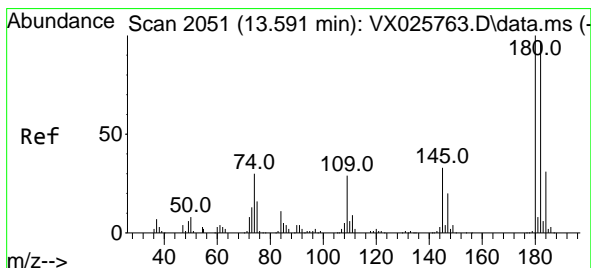
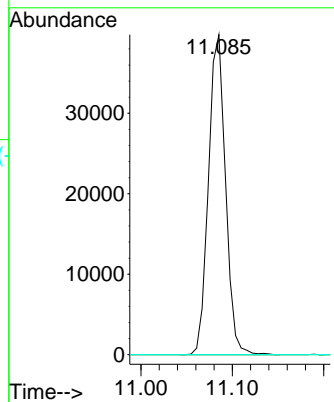
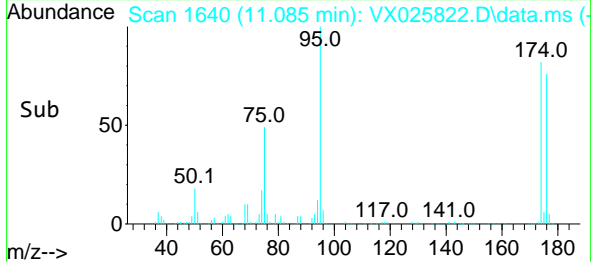


#81
 trans-1,4-Dichloro-2-butene
 Concen: 73.419 ug/l
 RT: 11.085 min Scan# 1
 Delta R.T. 0.067 min
 Lab File: VX025822.D
 Acq: 15 Dec 2021 18:13

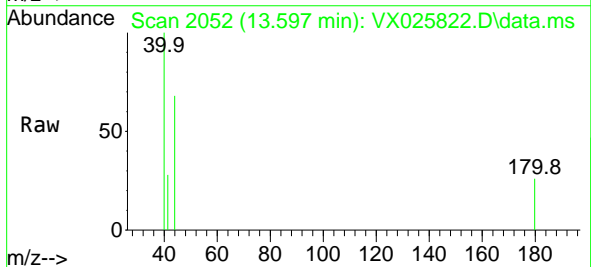
Instrument :
 MSVOA_X
 ClientSampleId :



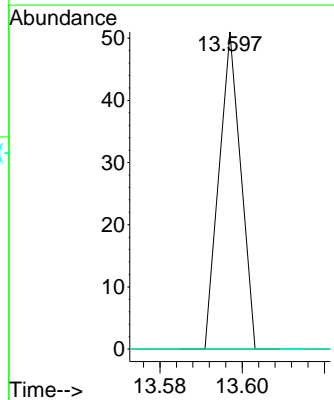
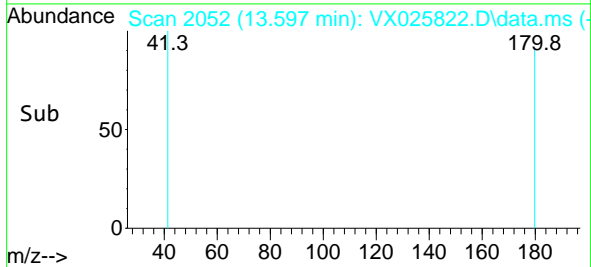
Tgt Ion: 75 Resp: 51412
 Ion Ratio Lower Upper
 75 100
 53 0.0 79.5 119.3#
 89 0.0 38.3 57.5#

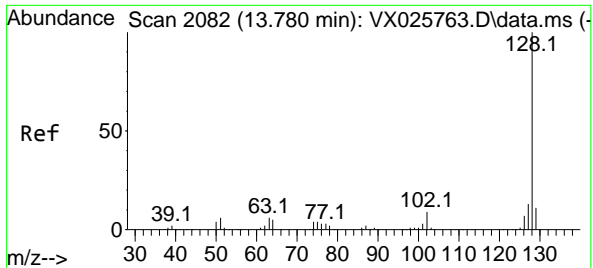


#93
 1,2,4-Trichlorobenzene
 Concen: 3.380 ug/l
 RT: 13.597 min Scan# 2052
 Delta R.T. 0.006 min
 Lab File: VX025822.D
 Acq: 15 Dec 2021 18:13



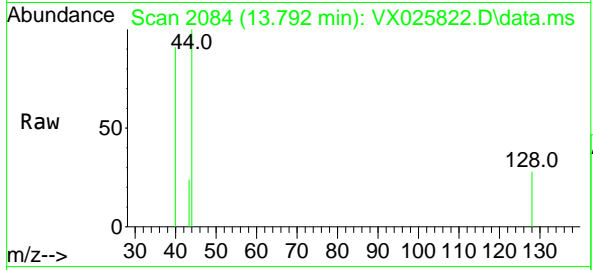
Tgt Ion: 180 Resp: 19
 Ion Ratio Lower Upper
 180 100
 182 0.0 47.2 141.6#
 145 0.0 16.3 48.9#





#95
 Naphthalene
 Concen: 2.419 ug/l
 RT: 13.792 min Scan# 20
 Delta R.T. 0.012 min
 Lab File: VX025822.D
 Acq: 15 Dec 2021 18:13

Instrument :
 MSVOA_X
 ClientSampleId :



Tgt Ion:128 Resp: 52

Ion	Ratio	Lower	Upper
128	100		
127	0.0	10.3	15.5#
129	0.0	8.8	13.2#

