

Data Path : Z:\voasrv\HPCHEM1\MSVOA_X\Data\VX121621\
 Data File : VX025826.D
 Acq On : 15 Dec 2021 19:47
 Operator : JC/MD
 Sample : PB141382ZHE#06
 Misc : 5.0mL/MSVOA_X/WATER
 ALS Vial : 18 Sample Multiplier: 1

Instrument :
 MSVOA_X
 ClientSampleId :

Quant Time: Dec 16 07:31:29 2021
 Quant Method : Z:\voasrv\HPCHEM1\MSVOA_X\Method\82X121321W.M
 Quant Title : SW846 8260
 QLast Update : Tue Dec 14 07:02:11 2021
 Response via : Initial Calibration

Compound	R.T.	QIon	Response	Conc	Units	Dev(Min)

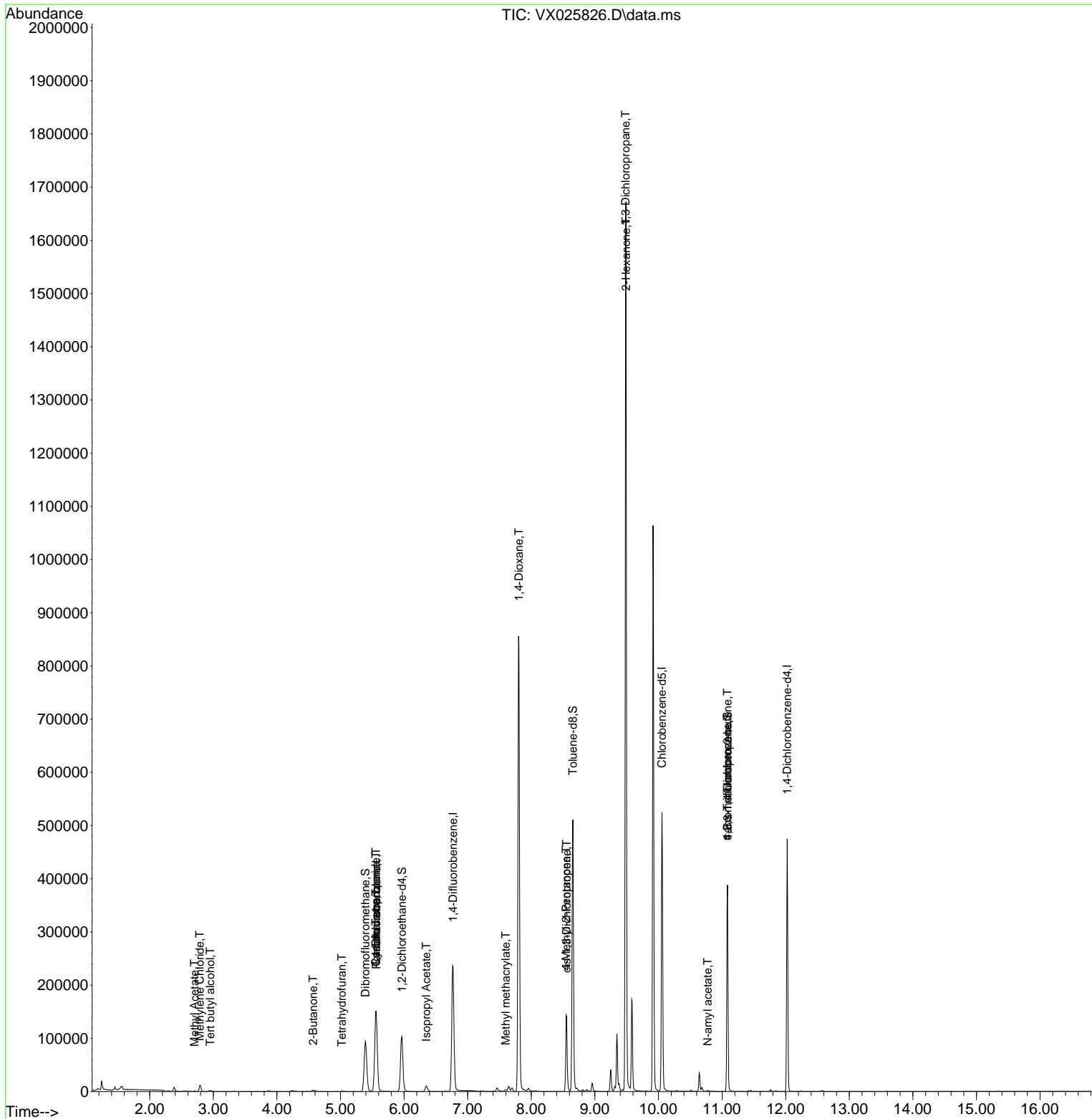
Internal Standards						
1) Pentafluorobenzene	5.562	168	139477	50.000	ug/l	0.00
34) 1,4-Difluorobenzene	6.769	114	245753	50.000	ug/l	0.00
63) Chlorobenzene-d5	10.055	117	236116	50.000	ug/l	0.00
72) 1,4-Dichlorobenzene-d4	12.024	152	95087	50.000	ug/l	0.00
System Monitoring Compounds						
33) 1,2-Dichloroethane-d4	5.964	65	97315	48.492	ug/l	0.00
Spiked Amount	50.000	Range 78 - 117	Recovery	=	96.980%	
35) Dibromofluoromethane	5.391	113	79998	46.676	ug/l	0.00
Spiked Amount	50.000	Range 75 - 124	Recovery	=	93.360%	
50) Toluene-d8	8.653	98	300724	48.157	ug/l	0.00
Spiked Amount	50.000	Range 92 - 112	Recovery	=	96.320%	
62) 4-Bromofluorobenzene	11.085	95	102951	43.400	ug/l	0.00
Spiked Amount	50.000	Range 83 - 123	Recovery	=	86.800%	
Target Compounds						
						Qvalue
11) Tert butyl alcohol	2.953	59	1395	3.465	ug/l #	73
16) Acetone	2.386	43	8330	Below Cal		99
18) Methyl Acetate	2.703	43	1117	0.365	ug/l #	90
20) Methylene Chloride	2.788	84	5186	0.633	ug/l	95
25) 2-Butanone	4.568	43	4614	3.418	ug/l	91
29) Tetrahydrofuran	5.019	42	388	0.452	ug/l #	56
31) Cyclohexane	5.556	56	3194	1.309	ug/l #	1
36) 1,1-Dichloropropene	5.556	75	11435	4.920	ug/l #	46
38) Carbon Tetrachloride	5.556	117	15162	5.607	ug/l #	16
43) Isopropyl Acetate	6.348	43	13352	3.209	ug/l	99
48) Methyl methacrylate	7.598	41	4640	2.368	ug/l #	12
49) 1,4-Dioxane	7.805	88	98	2.291	ug/l #	1
51) 4-Methyl-2-Pentanone	8.549	43	49463	18.162	ug/l #	50
54) cis-1,3-Dichloropropene	8.555	75	22116	7.908	ug/l #	66
57) 1,3-Dichloropropane	9.482	76	14914	4.799	ug/l #	42
59) 2-Hexanone	9.488	43	194435	94.226	ug/l #	52
74) N-amyl acetate	10.774	43	733	0.264	ug/l #	48
76) 1,2,3-Trichloropropane	11.085	75	51969	23.854	ug/l #	39
81) trans-1,4-Dichloro-2-b...	11.085	75	51969	73.954	ug/l #	10

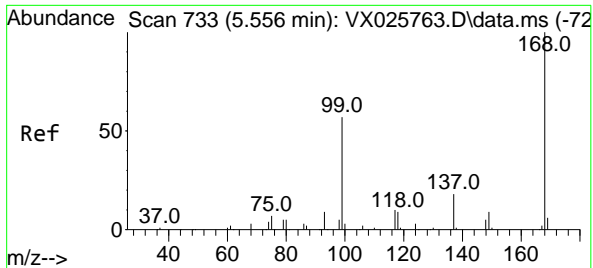
(#) = qualifier out of range (m) = manual integration (+) = signals summed

Data Path : Z:\voasrv\HPCHEM1\MSVOA_X\Data\VX121621\
 Data File : VX025826.D
 Acq On : 15 Dec 2021 19:47
 Operator : JC/MD
 Sample : PB141382ZHE#06
 Misc : 5.0mL/MSVOA_X/WATER
 ALS Vial : 18 Sample Multiplier: 1

Instrument :
 MSVOA_X
 ClientSampleId :

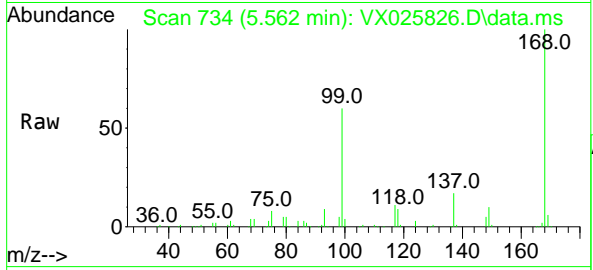
Quant Time: Dec 16 07:31:29 2021
 Quant Method : Z:\voasrv\HPCHEM1\MSVOA_X\Method\82X121321W.M
 Quant Title : SW846 8260
 QLast Update : Tue Dec 14 07:02:11 2021
 Response via : Initial Calibration



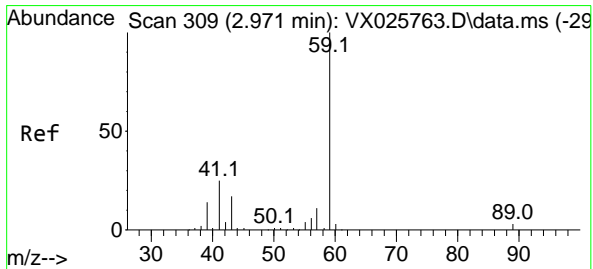
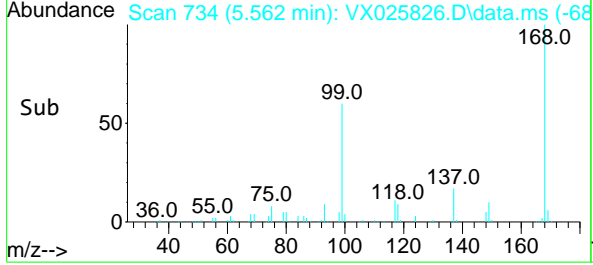
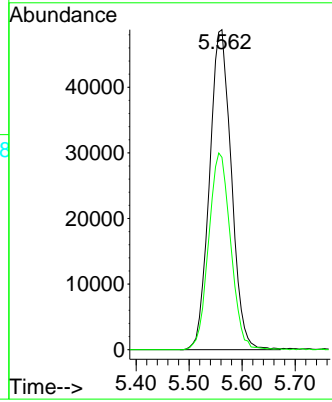


#1
 Pentafluorobenzene
 Concen: 50.000 ug/l
 RT: 5.562 min Scan# 71
 Delta R.T. 0.006 min
 Lab File: VX025826.D
 Acq: 15 Dec 2021 19:47

Instrument : MSVOA_X
 ClientSampleId :

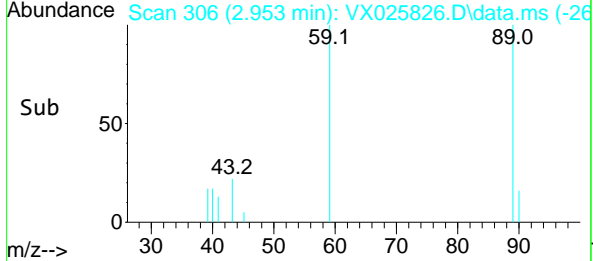
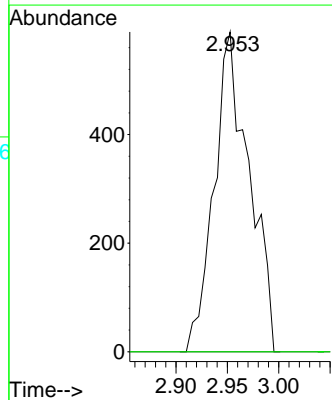
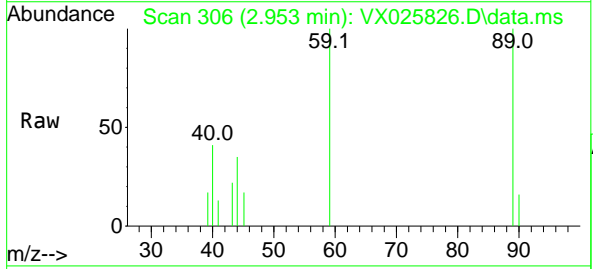


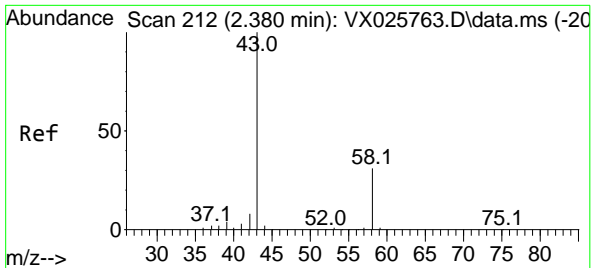
Tgt Ion:168 Resp: 139477
 Ion Ratio Lower Upper
 168 100
 99 60.1 45.8 68.8



#11
 Tert butyl alcohol
 Concen: 3.465 ug/l
 RT: 2.953 min Scan# 306
 Delta R.T. -0.019 min
 Lab File: VX025826.D
 Acq: 15 Dec 2021 19:47

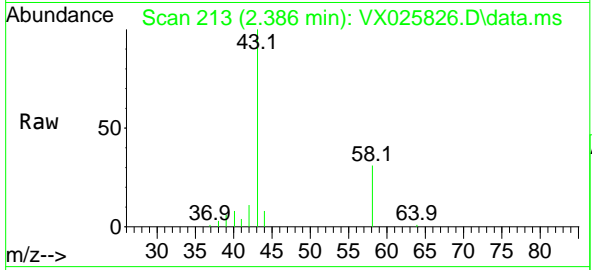
Tgt Ion: 59 Resp: 1395
 Ion Ratio Lower Upper
 59 100
 57 0.0 8.2 12.2#



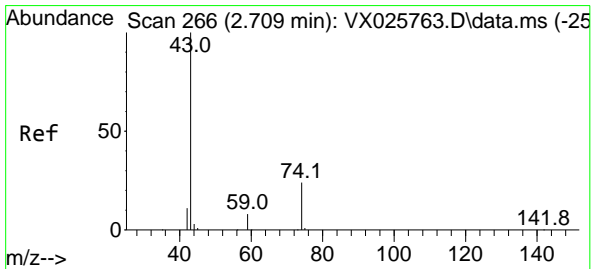
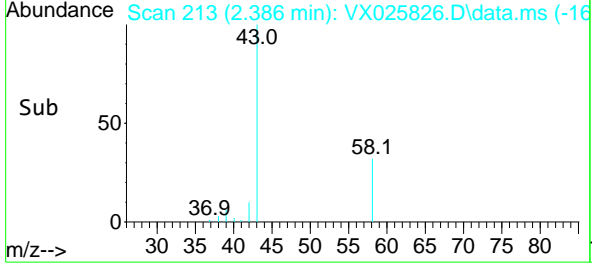
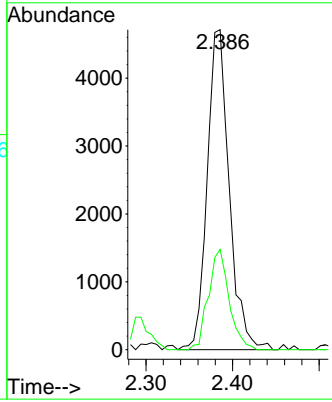


#16
 Acetone
 Concen: Below Cal
 RT: 2.386 min Scan# 21
 Delta R.T. 0.006 min
 Lab File: VX025826.D
 Acq: 15 Dec 2021 19:47

Instrument : MSVOA_X
 ClientSampleId :

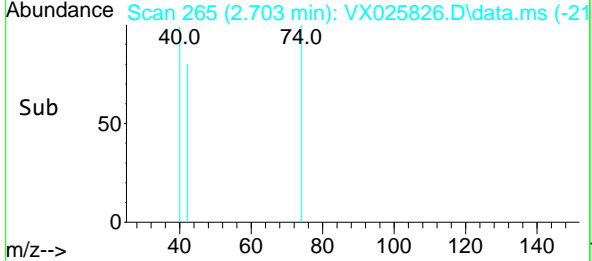
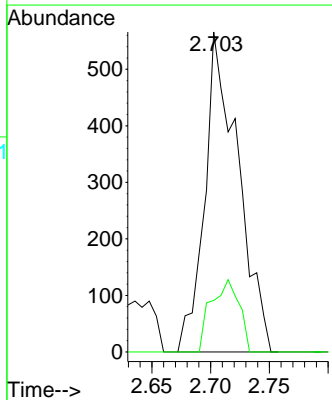
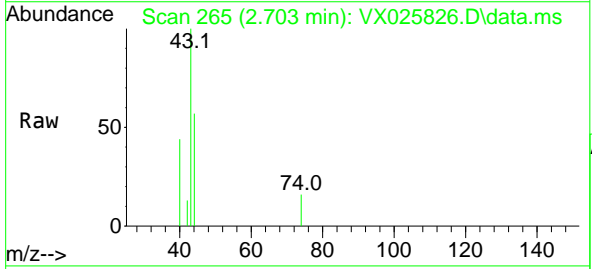


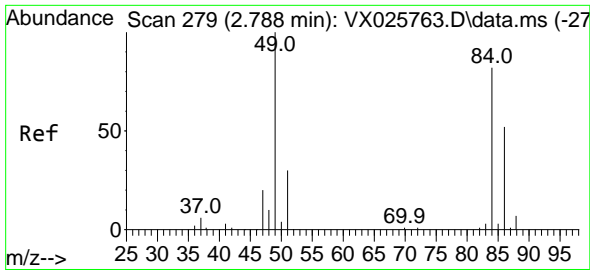
Tgt Ion: 43 Resp: 8330
 Ion Ratio Lower Upper
 43 100
 58 31.4 24.8 37.2



#18
 Methyl Acetate
 Concen: 0.365 ug/l
 RT: 2.703 min Scan# 265
 Delta R.T. -0.006 min
 Lab File: VX025826.D
 Acq: 15 Dec 2021 19:47

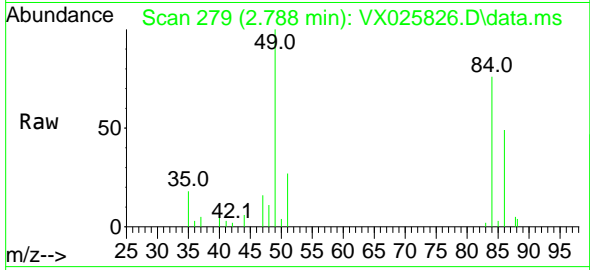
Tgt Ion: 43 Resp: 1117
 Ion Ratio Lower Upper
 43 100
 74 19.0 19.1 28.7#





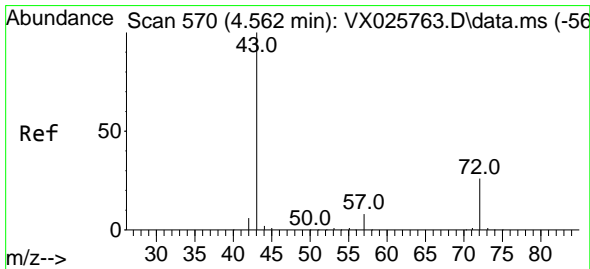
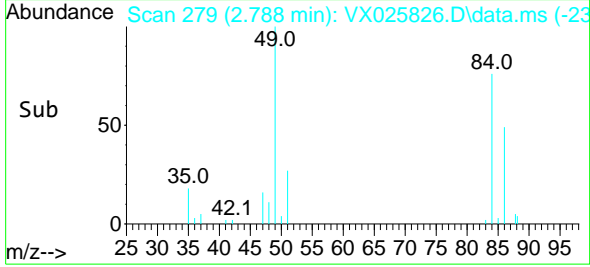
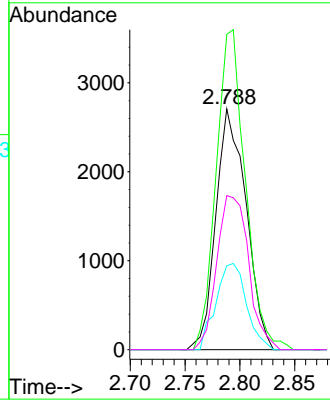
#20
 Methylene Chloride
 Concen: 0.633 ug/l
 RT: 2.788 min Scan# 21
 Delta R.T. -0.000 min
 Lab File: VX025826.D
 Acq: 15 Dec 2021 19:47

Instrument :
 MSVOA_X
 ClientSampleId :



Tgt Ion: 84 Resp: 5186

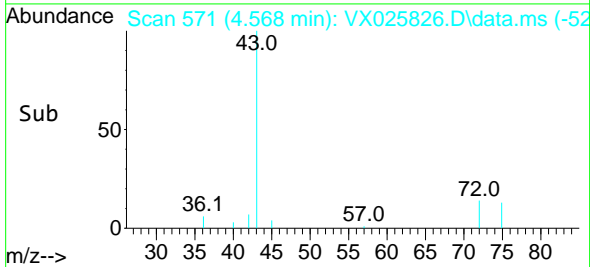
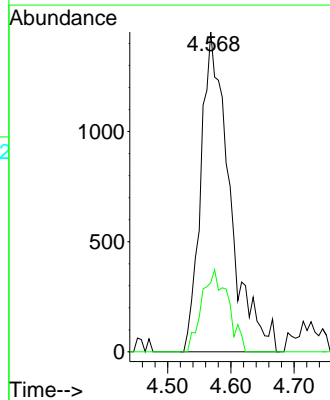
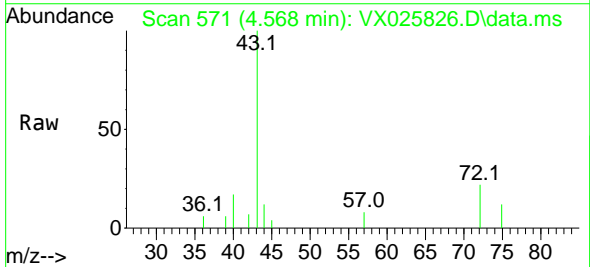
Ion	Ratio	Lower	Upper
84	100		
49	131.0	97.1	145.7
51	34.8	29.3	43.9
86	64.0	50.8	76.2

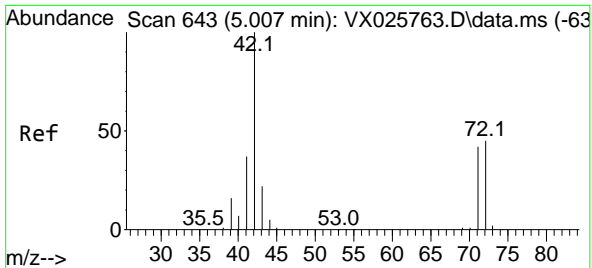


#25
 2-Butanone
 Concen: 3.418 ug/l
 RT: 4.568 min Scan# 571
 Delta R.T. 0.006 min
 Lab File: VX025826.D
 Acq: 15 Dec 2021 19:47

Tgt Ion: 43 Resp: 4614

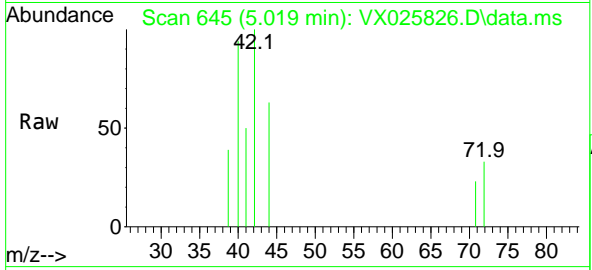
Ion	Ratio	Lower	Upper
43	100		
72	21.6	21.0	31.4





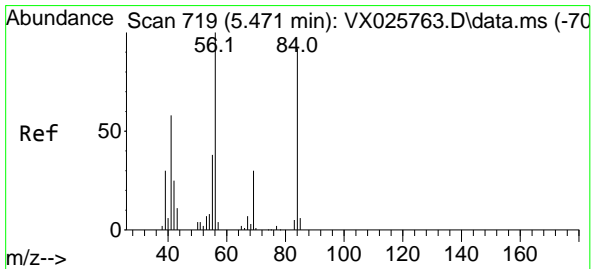
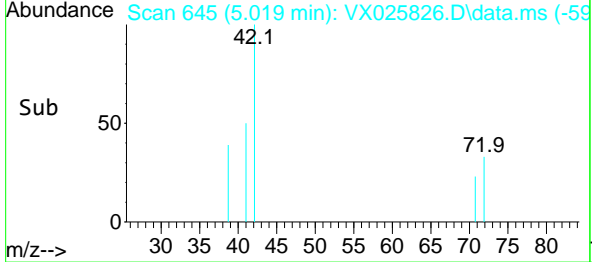
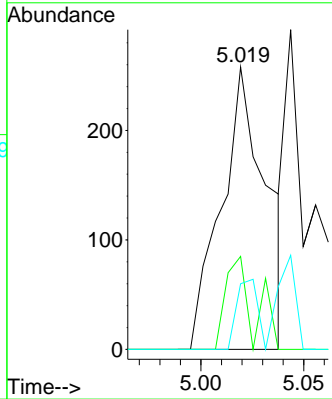
#29
 Tetrahydrofuran
 Concen: 0.452 ug/l
 RT: 5.019 min Scan# 64
 Delta R.T. 0.012 min
 Lab File: VX025826.D
 Acq: 15 Dec 2021 19:47

Instrument :
 MSVOA_X
 ClientSampleId :



Tgt Ion: 42 Resp: 388

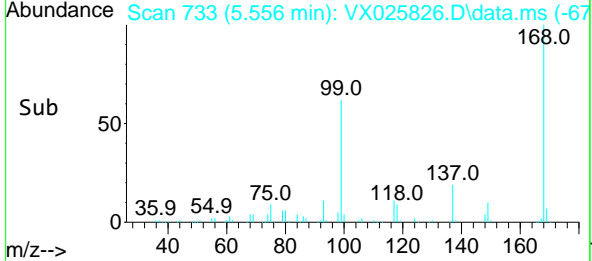
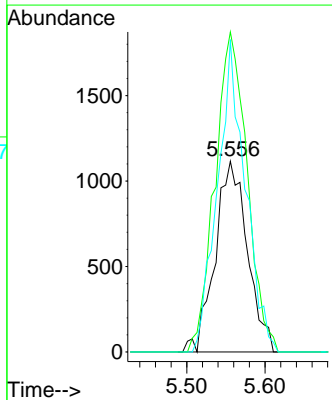
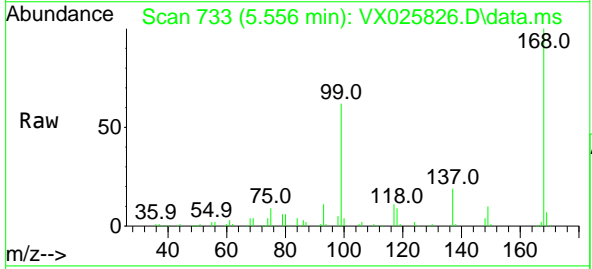
Ion	Ratio	Lower	Upper
42	100		
72	20.6	37.0	55.6#
71	11.6	34.1	51.1#

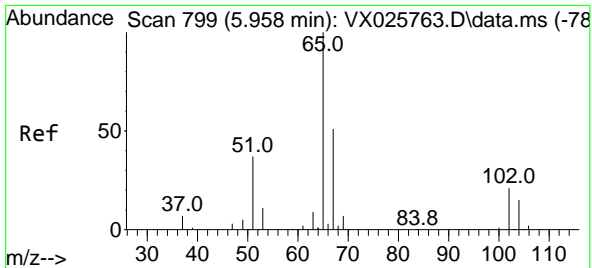


#31
 Cyclohexane
 Concen: 1.309 ug/l
 RT: 5.556 min Scan# 733
 Delta R.T. 0.085 min
 Lab File: VX025826.D
 Acq: 15 Dec 2021 19:47

Tgt Ion: 56 Resp: 3194

Ion	Ratio	Lower	Upper
56	100		
69	167.7	23.9	35.9#
84	163.7	73.2	109.8#

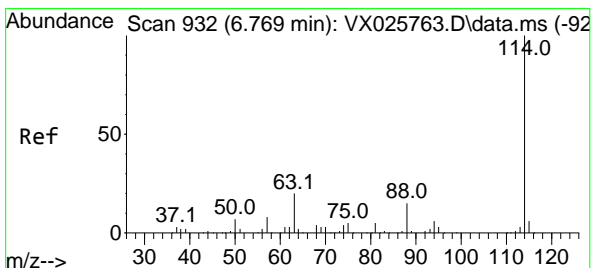
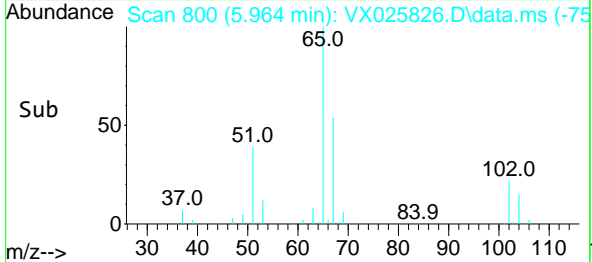
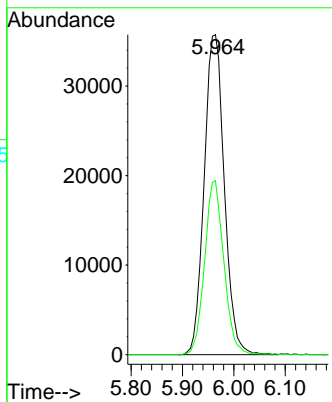
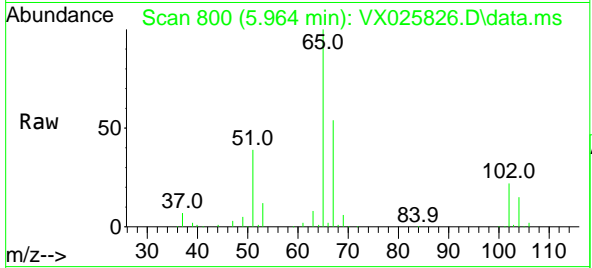




#33
 1,2-Dichloroethane-d4
 Concen: 48.492 ug/l
 RT: 5.964 min Scan# 80
 Delta R.T. 0.006 min
 Lab File: VX025826.D
 Acq: 15 Dec 2021 19:47

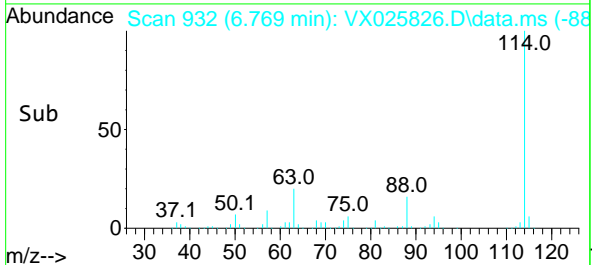
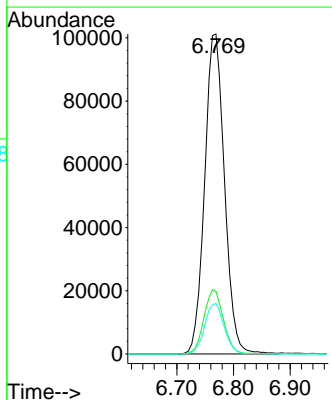
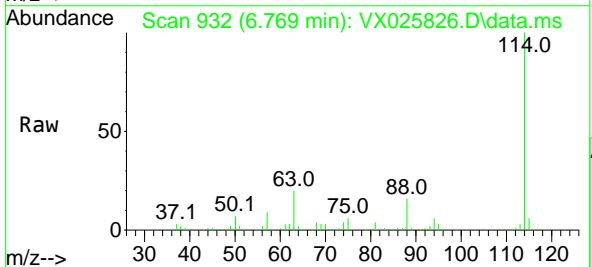
Instrument :
 MSVOA_X
 ClientSampleId :

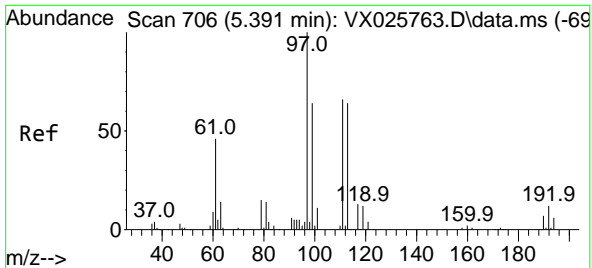
Tgt Ion: 65 Resp: 97315
 Ion Ratio Lower Upper
 65 100
 67 52.1 0.0 103.4



#34
 1,4-Difluorobenzene
 Concen: 50.000 ug/l
 RT: 6.769 min Scan# 932
 Delta R.T. -0.000 min
 Lab File: VX025826.D
 Acq: 15 Dec 2021 19:47

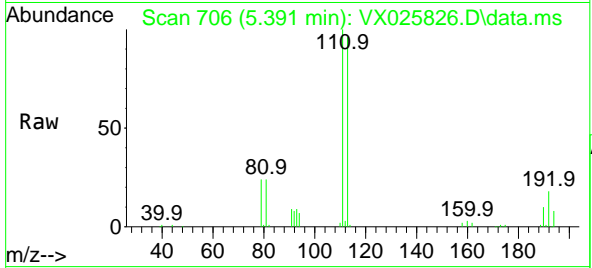
Tgt Ion:114 Resp: 245753
 Ion Ratio Lower Upper
 114 100
 63 19.6 0.0 40.0
 88 15.8 0.0 30.6





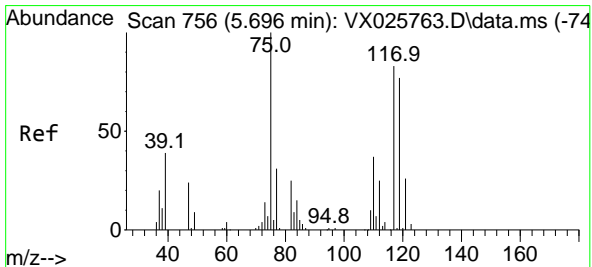
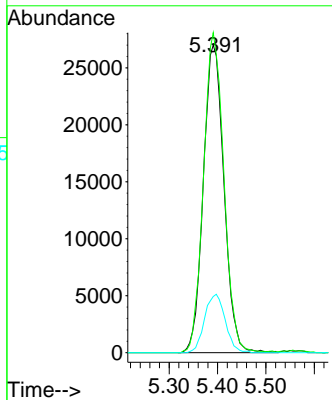
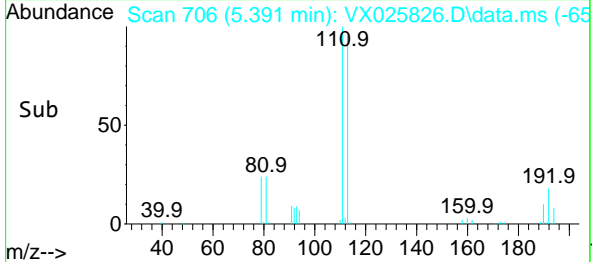
#35
 Dibromofluoromethane
 Concen: 46.676 ug/l
 RT: 5.391 min Scan# 706
 Delta R.T. -0.000 min
 Lab File: VX025826.D
 Acq: 15 Dec 2021 19:47

Instrument : MSVOA_X
 ClientSampleId :

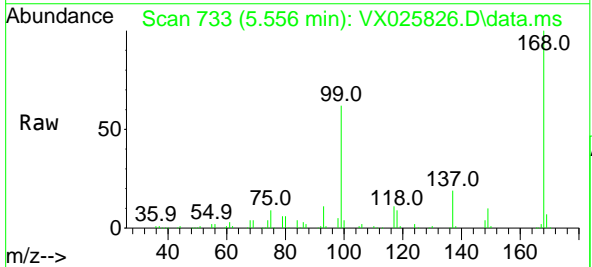


Tgt Ion: 113 Resp: 79998

Ion	Ratio	Lower	Upper
113	100		
111	102.9	81.8	122.8
192	19.0	15.0	22.4

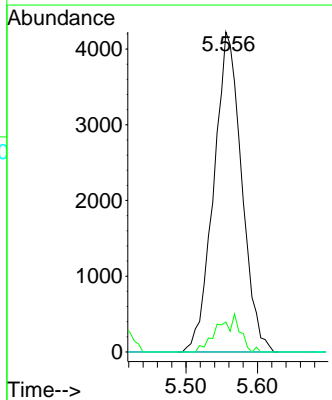
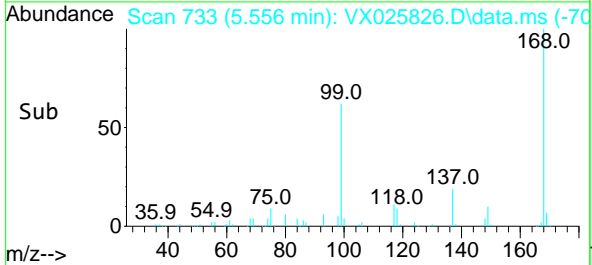


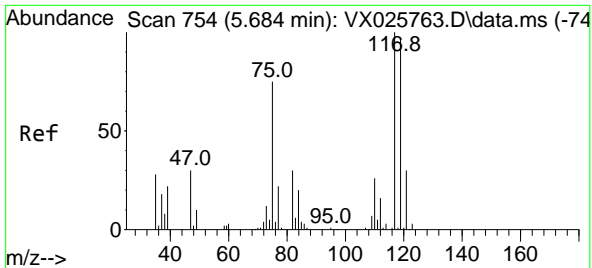
#36
 1,1-Dichloropropene
 Concen: 4.920 ug/l
 RT: 5.556 min Scan# 733
 Delta R.T. -0.140 min
 Lab File: VX025826.D
 Acq: 15 Dec 2021 19:47



Tgt Ion: 75 Resp: 11435

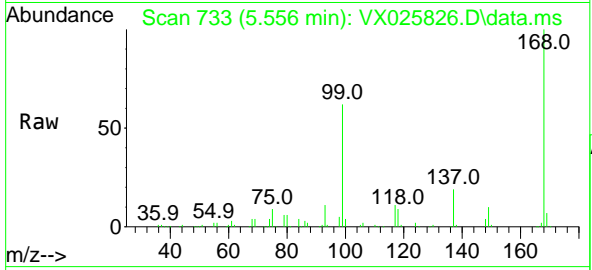
Ion	Ratio	Lower	Upper
75	100		
110	6.1	18.2	54.6#
77	0.0	24.7	37.1#





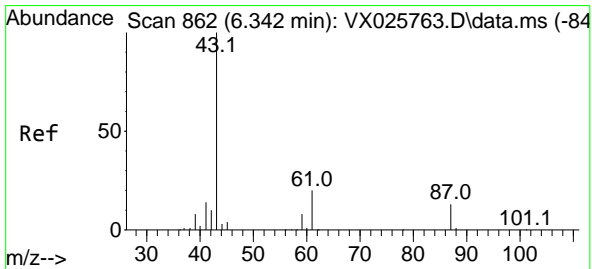
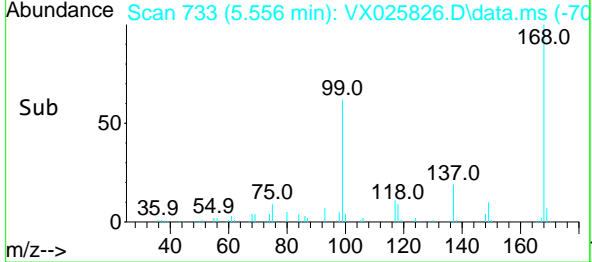
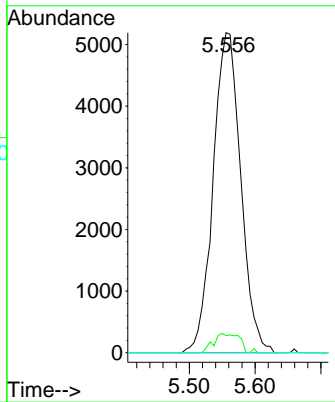
#38
 Carbon Tetrachloride
 Concen: 5.607 ug/l
 RT: 5.556 min Scan# 71
 Delta R.T. -0.128 min
 Lab File: VX025826.D
 Acq: 15 Dec 2021 19:47

Instrument :
 MSVOA_X
 ClientSampleId :



Tgt Ion: 117 Resp: 15162

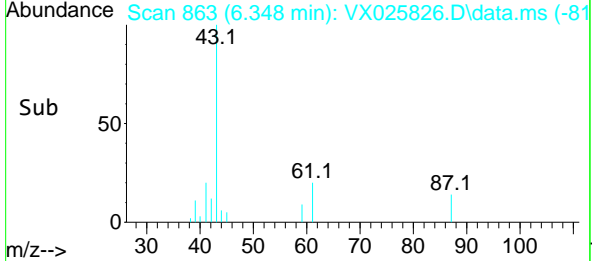
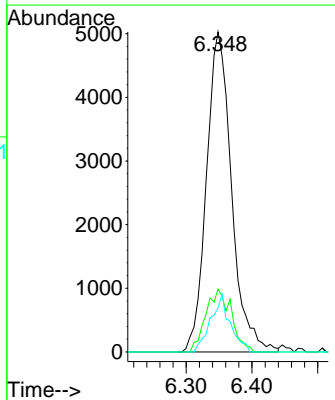
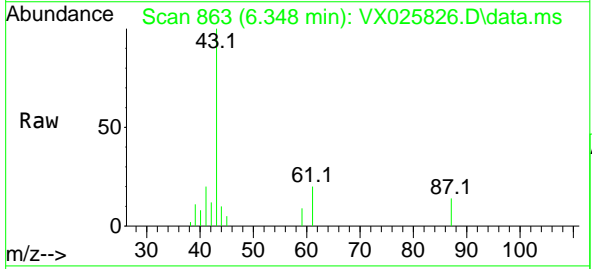
Ion	Ratio	Lower	Upper
117	100		
119	5.3	77.2	115.8#
121	0.0	23.8	35.8#

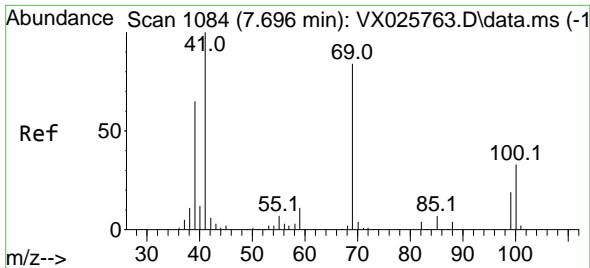


#43
 Isopropyl Acetate
 Concen: 3.209 ug/l
 RT: 6.348 min Scan# 863
 Delta R.T. 0.006 min
 Lab File: VX025826.D
 Acq: 15 Dec 2021 19:47

Tgt Ion: 43 Resp: 13352

Ion	Ratio	Lower	Upper
43	100		
61	20.0	15.7	23.5
87	13.9	11.2	16.8

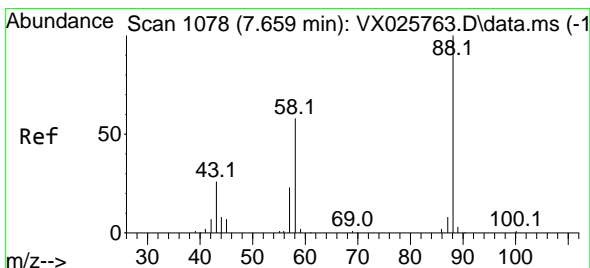
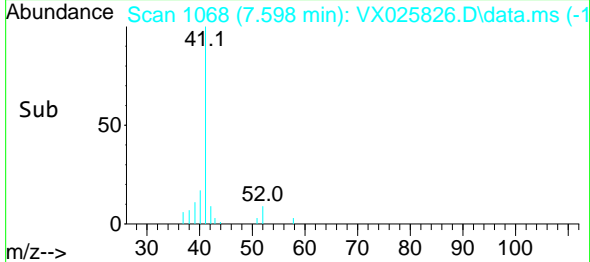
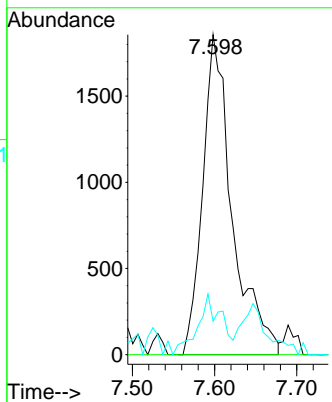
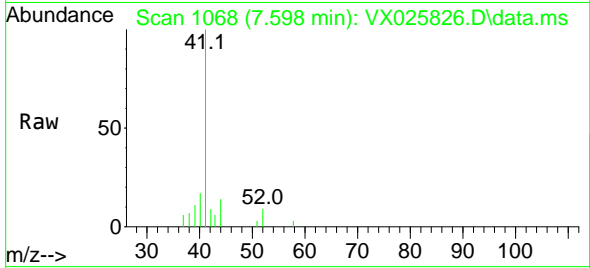




#48
 Methyl methacrylate
 Concen: 2.368 ug/l
 RT: 7.598 min Scan# 1102
 Delta R.T. -0.098 min
 Lab File: VX025826.D
 Acq: 15 Dec 2021 19:47

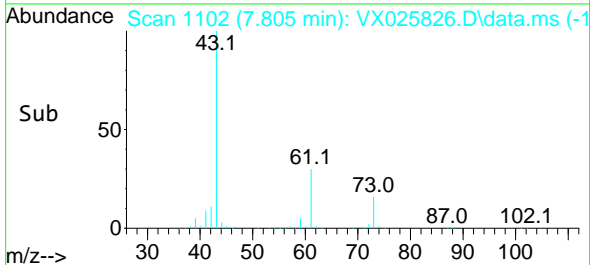
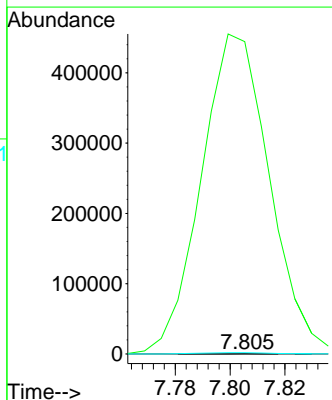
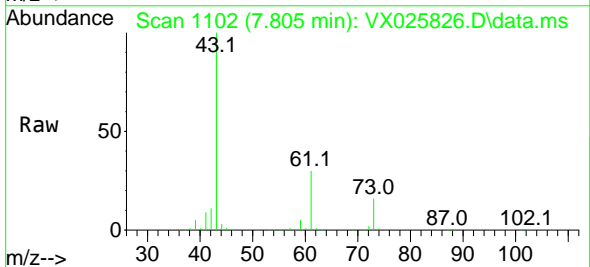
Instrument : MSVOA_X
 ClientSampleId :

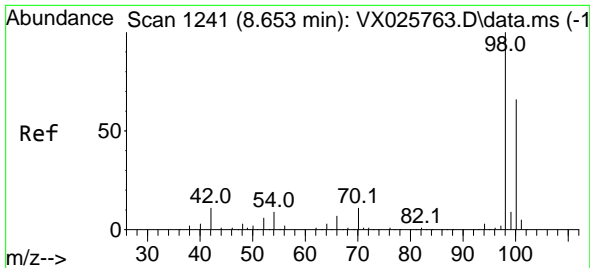
Tgt Ion	Resp	Lower	Upper
41	4640		
69	0.0	67.3	100.9#
39	0.0	50.2	75.2#



#49
 1,4-Dioxane
 Concen: 2.291 ug/l
 RT: 7.805 min Scan# 1102
 Delta R.T. 0.146 min
 Lab File: VX025826.D
 Acq: 15 Dec 2021 19:47

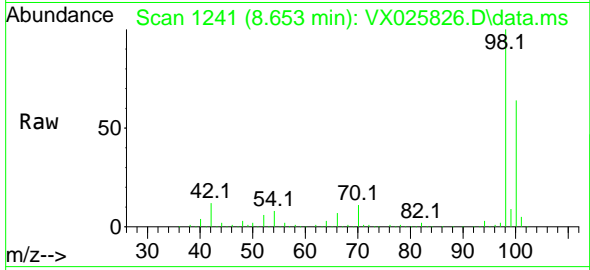
Tgt Ion	Resp	Lower	Upper
88	98		
43	816272.4	25.3	37.9#
58	3554.1	51.8	77.6#



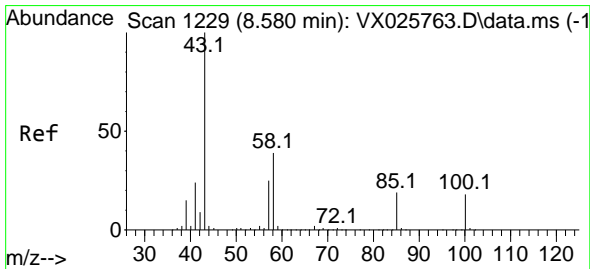
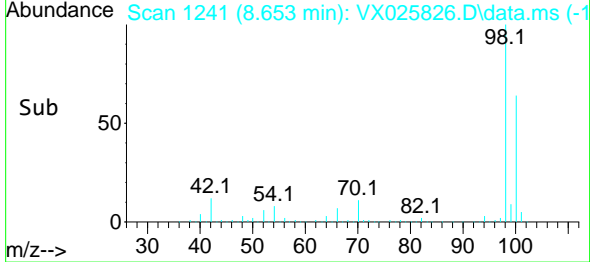
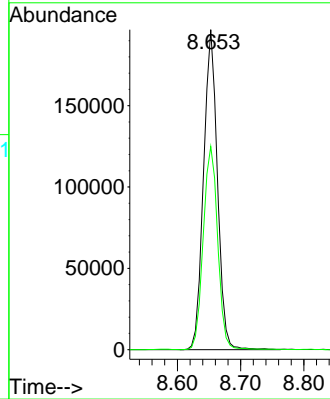


#50
 Toluene-d8
 Concen: 48.157 ug/l
 RT: 8.653 min Scan# 11
 Delta R.T. -0.000 min
 Lab File: VX025826.D
 Acq: 15 Dec 2021 19:47

Instrument :
 MSVOA_X
 ClientSampleId :

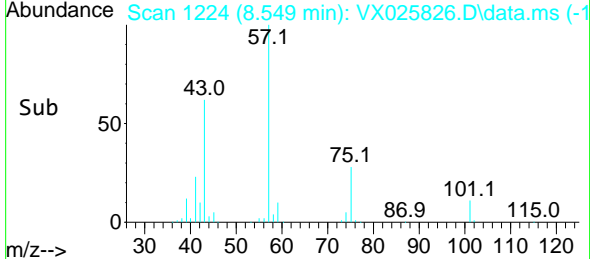
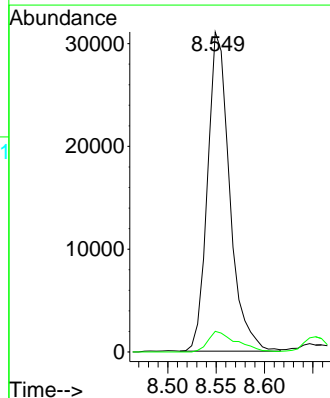
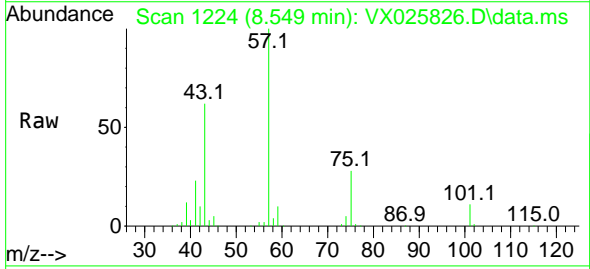


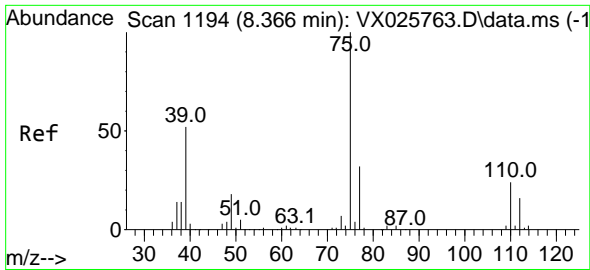
Tgt Ion: 98 Resp: 300724
 Ion Ratio Lower Upper
 98 100
 100 66.3 52.6 78.8



#51
 4-Methyl-2-Pentanone
 Concen: 18.162 ug/l
 RT: 8.549 min Scan# 1224
 Delta R.T. -0.031 min
 Lab File: VX025826.D
 Acq: 15 Dec 2021 19:47

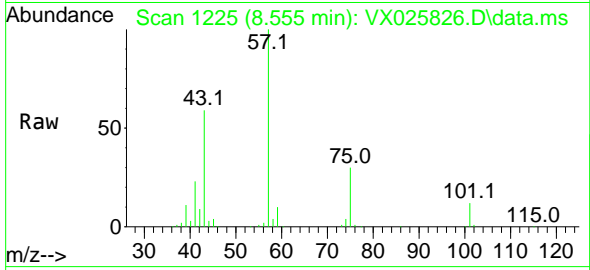
Tgt Ion: 43 Resp: 49463
 Ion Ratio Lower Upper
 43 100
 58 8.3 30.8 46.2#



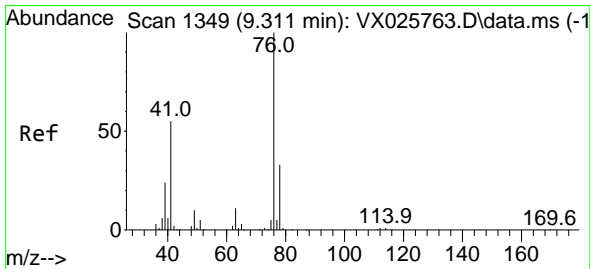
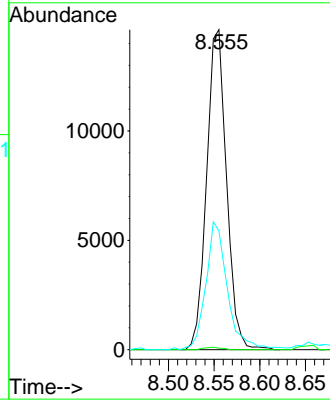
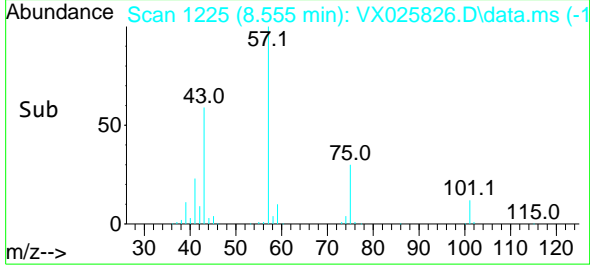


#54
 cis-1,3-Dichloropropene
 Concen: 7.908 ug/l
 RT: 8.555 min Scan# 1194
 Delta R.T. 0.189 min
 Lab File: VX025826.D
 Acq: 15 Dec 2021 19:47

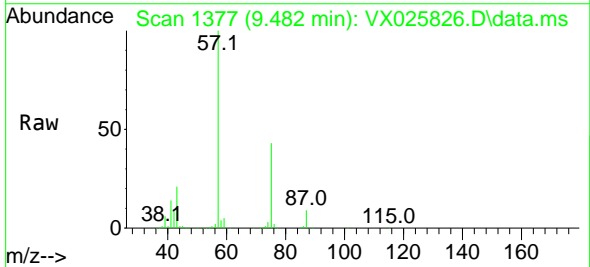
Instrument :
 MSVOA_X
 ClientSampleId :



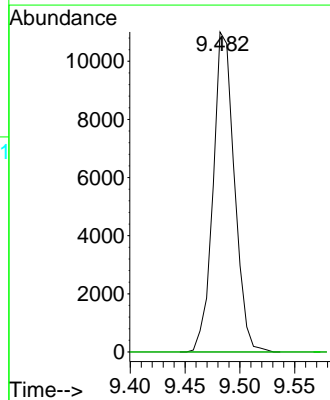
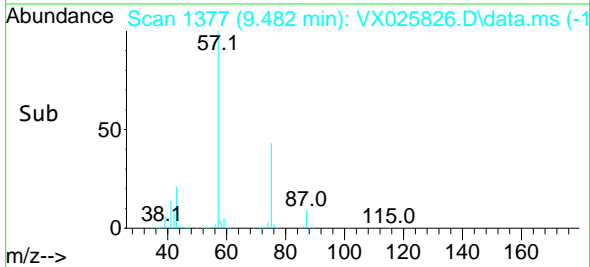
Tgt Ion: 75 Resp: 22116
 Ion Ratio Lower Upper
 75 100
 77 0.4 25.3 37.9#
 39 37.1 41.4 62.0#

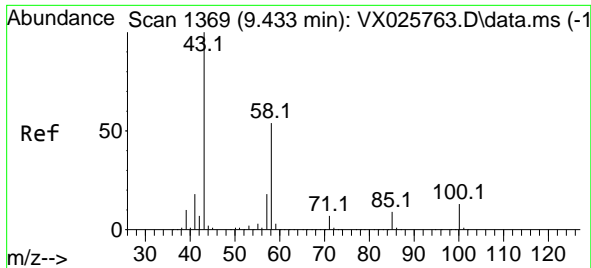


#57
 1,3-Dichloropropane
 Concen: 4.799 ug/l
 RT: 9.482 min Scan# 1377
 Delta R.T. 0.170 min
 Lab File: VX025826.D
 Acq: 15 Dec 2021 19:47



Tgt Ion: 76 Resp: 14914
 Ion Ratio Lower Upper
 76 100
 78 0.0 26.0 39.0#

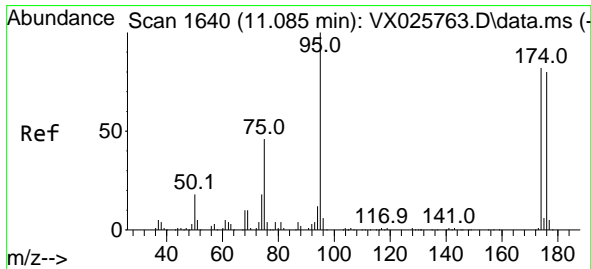
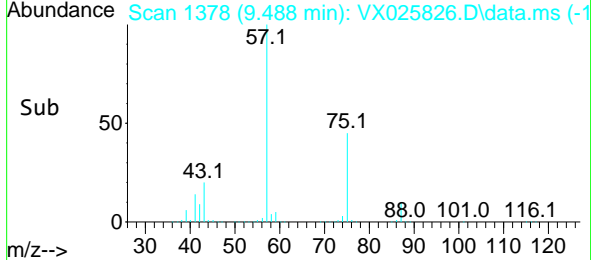
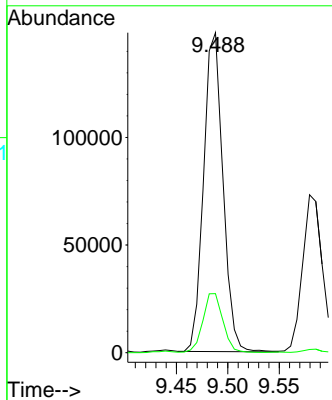
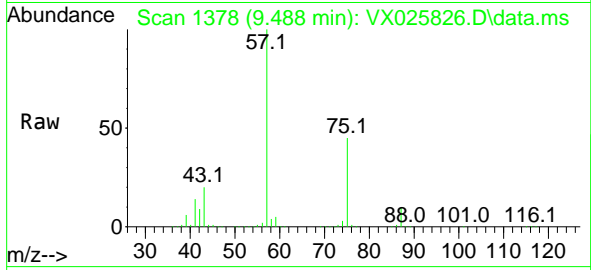




#59
 2-Hexanone
 Concen: 94.226 ug/l
 RT: 9.488 min Scan# 11
 Delta R.T. 0.055 min
 Lab File: VX025826.D
 Acq: 15 Dec 2021 19:47

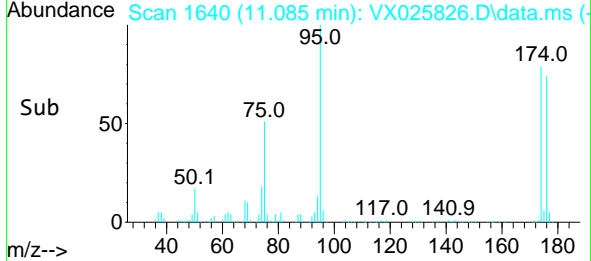
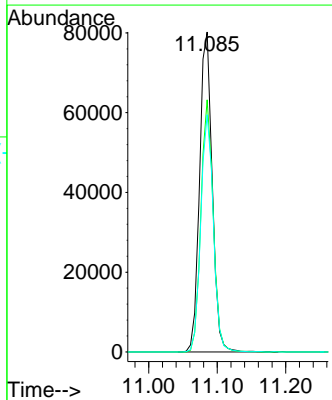
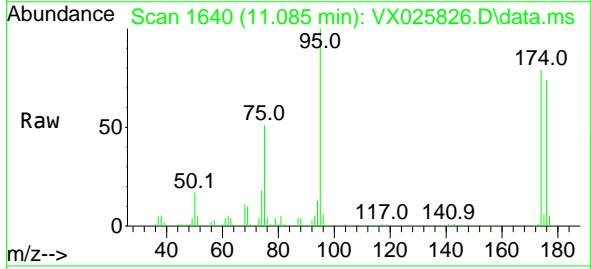
Instrument : MSVOA_X
 ClientSampleId :

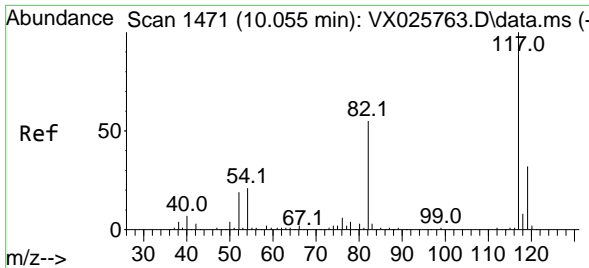
Tgt Ion: 43 Resp: 194435
 Ion Ratio Lower Upper
 43 100
 58 19.3 26.9 80.6#



#62
 4-Bromofluorobenzene
 Concen: 43.400 ug/l
 RT: 11.085 min Scan# 1640
 Delta R.T. -0.000 min
 Lab File: VX025826.D
 Acq: 15 Dec 2021 19:47

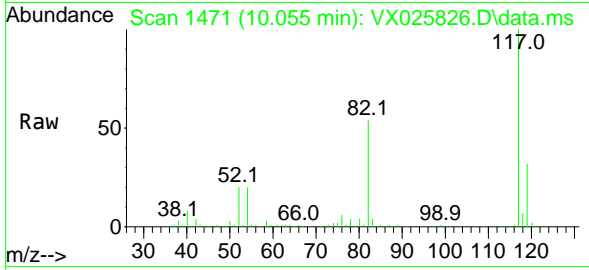
Tgt Ion: 95 Resp: 102951
 Ion Ratio Lower Upper
 95 100
 174 76.6 0.0 157.4
 176 73.8 0.0 154.6





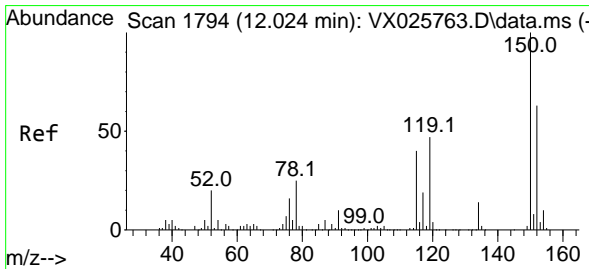
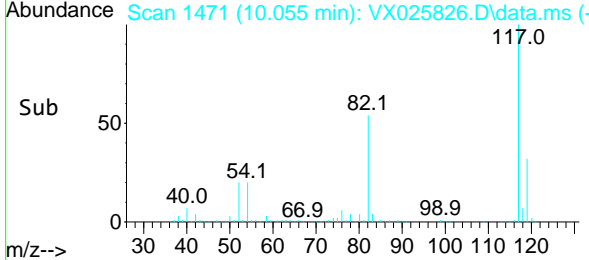
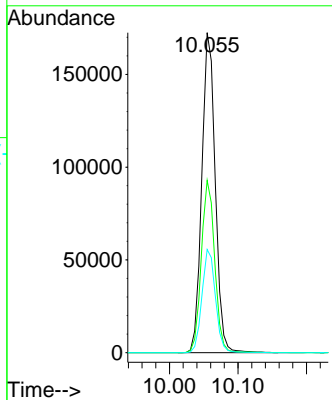
#63
 Chlorobenzene-d5
 Concen: 50.000 ug/l
 RT: 10.055 min Scan# 1471
 Delta R.T. -0.000 min
 Lab File: VX025826.D
 Acq: 15 Dec 2021 19:47

Instrument : MSVOA_X
 ClientSampleId :



Tgt Ion:117 Resp: 236116

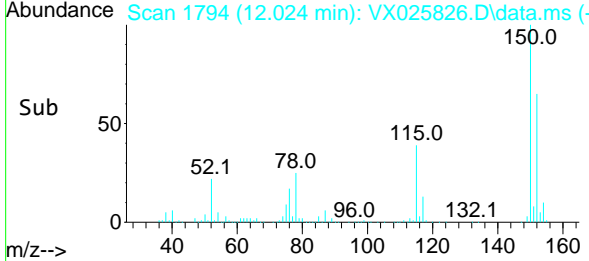
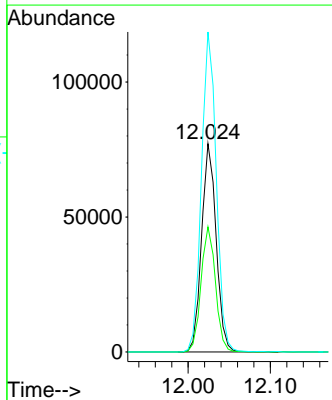
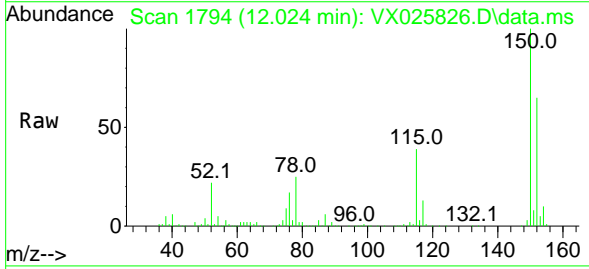
Ion	Ratio	Lower	Upper
117	100		
82	53.9	43.8	65.6
119	32.3	25.2	37.8

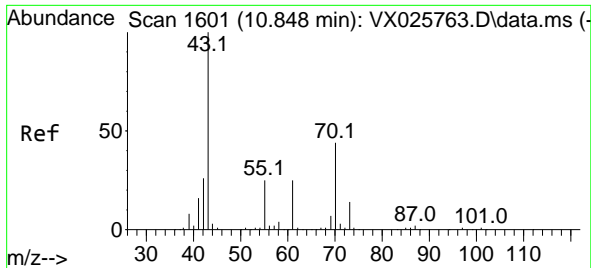


#72
 1,4-Dichlorobenzene-d4
 Concen: 50.000 ug/l
 RT: 12.024 min Scan# 1794
 Delta R.T. -0.000 min
 Lab File: VX025826.D
 Acq: 15 Dec 2021 19:47

Tgt Ion:152 Resp: 95087

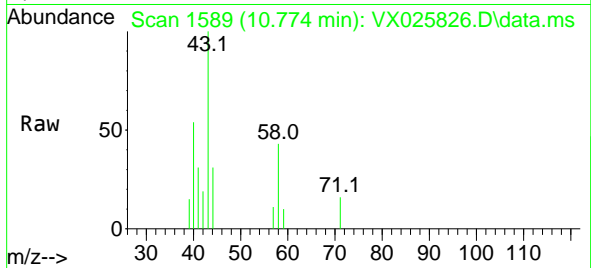
Ion	Ratio	Lower	Upper
152	100		
115	59.5	41.3	123.9
150	156.0	0.0	351.8





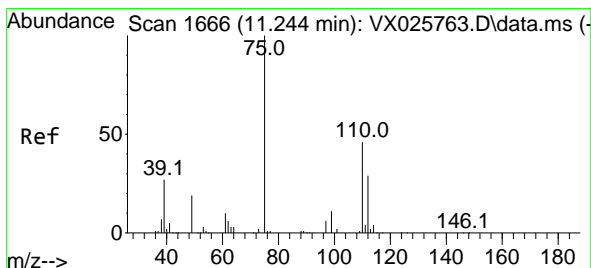
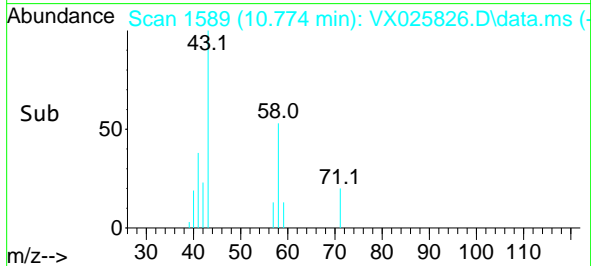
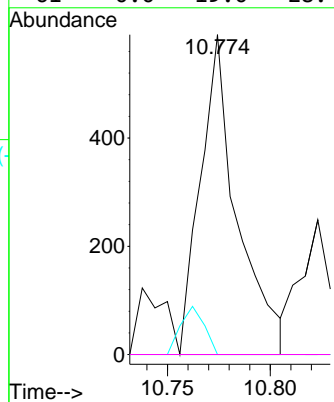
#74
 N-amy1 acetate
 Concen: 0.264 ug/l
 RT: 10.774 min Scan# 1601
 Delta R.T. -0.073 min
 Lab File: VX025826.D
 Acq: 15 Dec 2021 19:47

Instrument : MSVOA_X
 ClientSampleId :



Tgt Ion: 43 Resp: 733

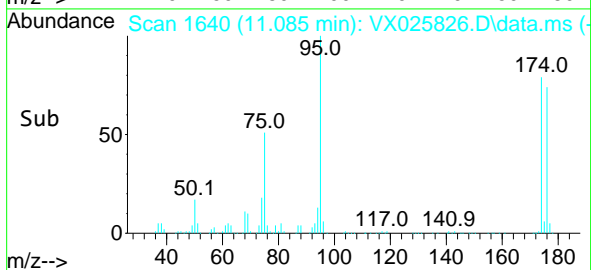
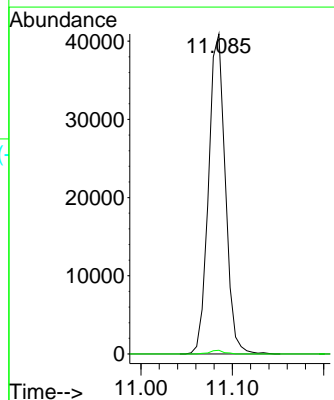
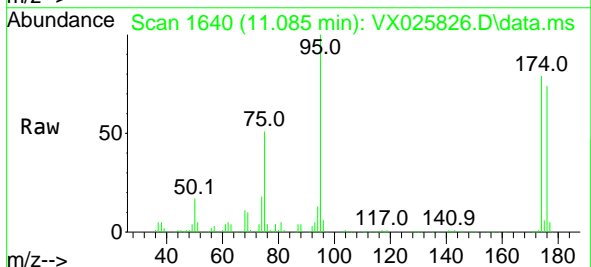
Ion	Ratio	Lower	Upper
43	100		
70	0.0	34.1	51.1#
55	9.7	19.2	28.8#
61	0.0	19.0	28.4#

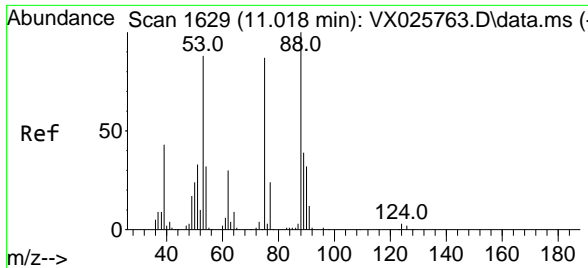


#76
 1,2,3-Trichloropropane
 Concen: 23.854 ug/l
 RT: 11.085 min Scan# 1640
 Delta R.T. -0.159 min
 Lab File: VX025826.D
 Acq: 15 Dec 2021 19:47

Tgt Ion: 75 Resp: 51969

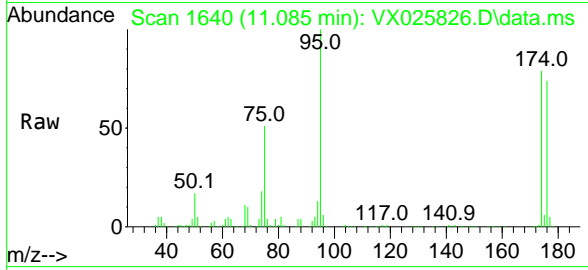
Ion	Ratio	Lower	Upper
75	100		
77	1.0	19.0	57.0#





#81
 trans-1,4-Dichloro-2-butene
 Concen: 73.954 ug/l
 RT: 11.085 min Scan# 1
 Delta R.T. 0.067 min
 Lab File: VX025826.D
 Acq: 15 Dec 2021 19:47

Instrument :
 MSVOA_X
 ClientSampleId :



Tgt Ion: 75 Resp: 51969

Ion	Ratio	Lower	Upper
75	100		
53	0.0	79.5	119.3#
89	0.0	38.3	57.5#

