

Data Path : Z:\voasrv\HPCHEM1\MSVOA_X\Data\VX121621\
 Data File : VX025842.D
 Acq On : 16 Dec 2021 03:12
 Operator : JC/MD
 Sample : M5084-04
 Misc : 5.0mL/MSVOA_X/WATER
 ALS Vial : 37 Sample Multiplier: 1

Instrument :
 MSVOA_X
 ClientSampleId :
 C5

Quant Time: Dec 16 07:35:43 2021
 Quant Method : Z:\voasrv\HPCHEM1\MSVOA_X\Method\82X121321W.M
 Quant Title : SW846 8260
 QLast Update : Tue Dec 14 07:02:11 2021
 Response via : Initial Calibration

Compound	R.T.	QIon	Response	Conc	Units	Dev(Min)

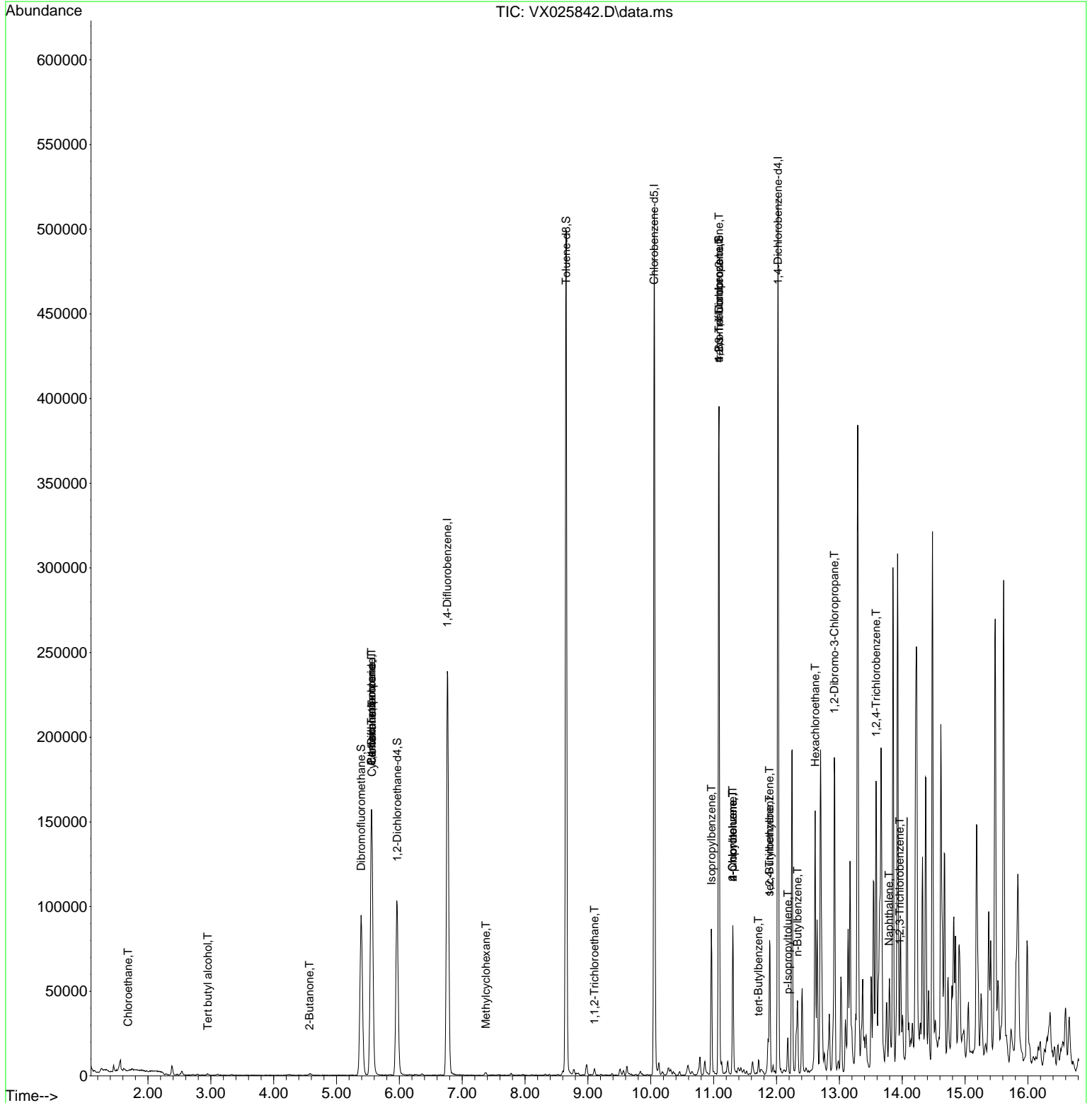
Internal Standards						
1) Pentafluorobenzene	5.556	168	148449	50.000	ug/l	0.00
34) 1,4-Difluorobenzene	6.763	114	250685	50.000	ug/l	0.00
63) Chlorobenzene-d5	10.055	117	224679	50.000	ug/l	0.00
72) 1,4-Dichlorobenzene-d4	12.024	152	101600	50.000	ug/l	0.00
System Monitoring Compounds						
33) 1,2-Dichloroethane-d4	5.964	65	95225	44.583	ug/l	0.00
Spiked Amount	50.000	Range	78 - 117	Recovery	=	89.160%
35) Dibromofluoromethane	5.391	113	79211	45.307	ug/l	0.00
Spiked Amount	50.000	Range	75 - 124	Recovery	=	90.620%
50) Toluene-d8	8.653	98	292412	45.905	ug/l	0.00
Spiked Amount	50.000	Range	92 - 112	Recovery	=	91.800%#
62) 4-Bromofluorobenzene	11.085	95	103774	42.887	ug/l	0.00
Spiked Amount	50.000	Range	83 - 123	Recovery	=	85.780%
Target Compounds						
						Qvalue
6) Chloroethane	1.685	64	344	0.258	ug/l #	42
11) Tert butyl alcohol	2.953	59	450	1.050	ug/l #	73
16) Acetone	2.380	43	5381	Below Cal	#	89
20) Methylene Chloride	2.788	84	60	Below Cal	#	45
25) 2-Butanone	4.568	43	1120	0.780	ug/l #	81
31) Cyclohexane	5.562	56	3451	1.329	ug/l #	23
36) 1,1-Dichloropropene	5.556	75	11864	5.004	ug/l #	50
38) Carbon Tetrachloride	5.556	117	15407	5.585	ug/l #	16
39) Methylcyclohexane	7.379	83	553	0.208	ug/l #	80
55) 1,1,2-Trichloroethane	9.104	97	1281	0.663	ug/l #	18
73) Isopropylbenzene	10.963	105	44103	5.981	ug/l	100
76) 1,2,3-Trichloropropane	11.085	75	52441	22.528	ug/l #	39
78) n-propylbenzene	11.305	91	51923	6.225	ug/l	97
79) 2-Chlorotoluene	11.305	91	51923	9.790	ug/l #	39
81) trans-1,4-Dichloro-2-b...	11.085	75	52441	69.842	ug/l #	10
82) 4-Chlorotoluene	11.305	91	51923	8.742	ug/l #	44
83) tert-Butylbenzene	11.713	119	3333	0.556	ug/l	94
84) 1,2,4-Trimethylbenzene	11.890	105	42032	6.880	ug/l #	31
85) sec-Butylbenzene	11.890	105	42032	5.834	ug/l	91
86) p-Isopropyltoluene	12.183	119	9186	1.518	ug/l	97
89) n-Butylbenzene	12.335	91	17436	3.454	ug/l	91
90) Hexachloroethane	12.615	117	6905	5.806	ug/l #	14
92) 1,2-Dibromo-3-Chloropr...	12.920	75	589	1.020	ug/l #	1
93) 1,2,4-Trichlorobenzene	13.585	180	94	3.414	ug/l #	1
95) Naphthalene	13.792	128	2052	2.693	ug/l #	15
96) 1,2,3-Trichlorobenzene	13.963	180	48	3.016	ug/l #	1

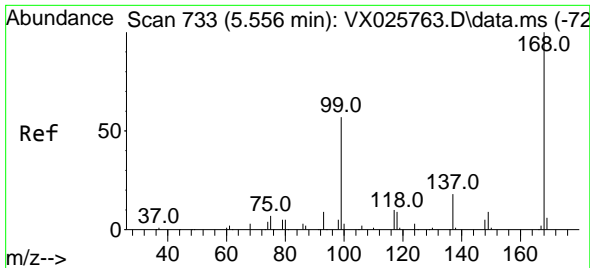
(#) = qualifier out of range (m) = manual integration (+) = signals summed

Data Path : Z:\voasrv\HPCHEM1\MSVOA_X\Data\VX121621\
 Data File : VX025842.D
 Acq On : 16 Dec 2021 03:12
 Operator : JC/MD
 Sample : M5084-04
 Misc : 5.0mL/MSVOA_X/WATER
 ALS Vial : 37 Sample Multiplier: 1

Instrument :
 MSVOA_X
 ClientSampleId :
 C5

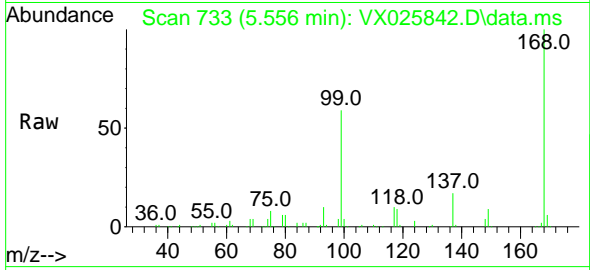
Quant Time: Dec 16 07:35:43 2021
 Quant Method : Z:\voasrv\HPCHEM1\MSVOA_X\Method\82X121321W.M
 Quant Title : SW846 8260
 QLast Update : Tue Dec 14 07:02:11 2021
 Response via : Initial Calibration



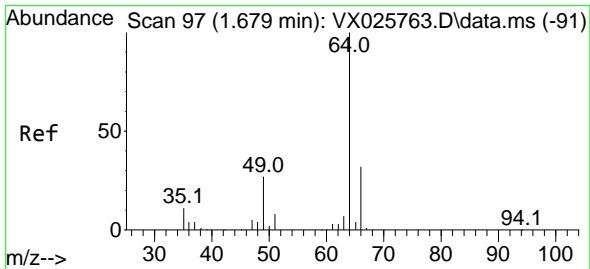
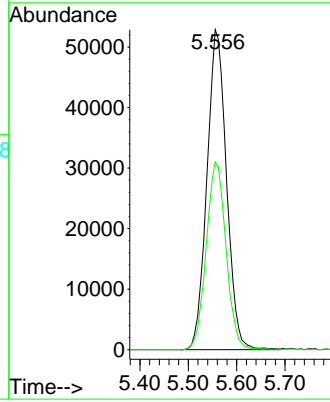
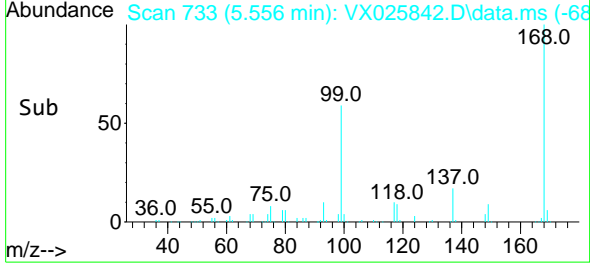


#1
 Pentafluorobenzene
 Concen: 50.000 ug/l
 RT: 5.556 min Scan# 71
 Delta R.T. -0.000 min
 Lab File: VX025842.D
 Acq: 16 Dec 2021 03:12

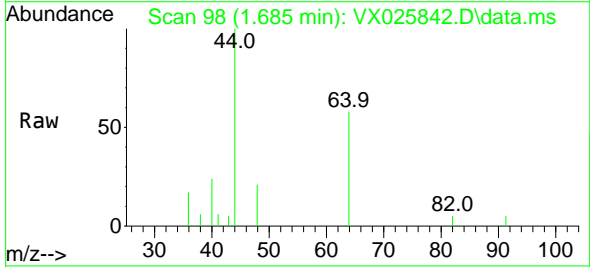
Instrument : MSVOA_X
 ClientSampleId : C5



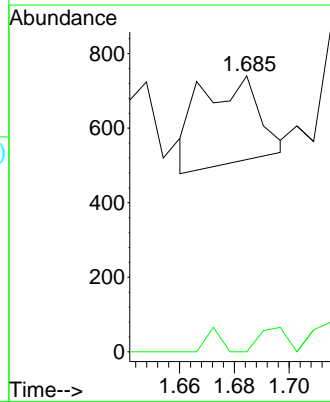
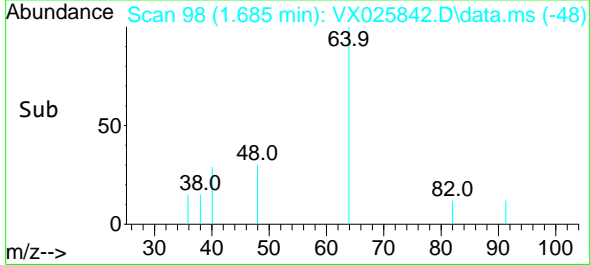
Tgt Ion:168 Resp: 148449
 Ion Ratio Lower Upper
 168 100
 99 58.7 45.8 68.8

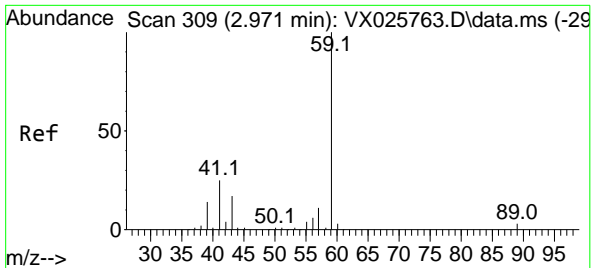


#6
 Chloroethane
 Concen: 0.258 ug/l
 RT: 1.685 min Scan# 98
 Delta R.T. 0.006 min
 Lab File: VX025842.D
 Acq: 16 Dec 2021 03:12



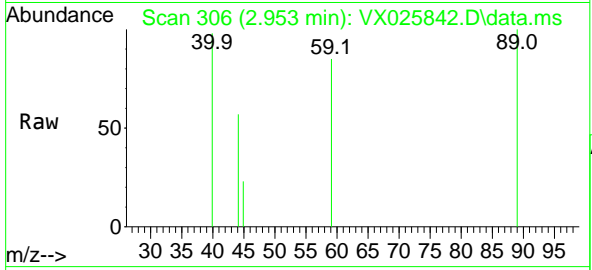
Tgt Ion: 64 Resp: 344
 Ion Ratio Lower Upper
 64 100
 66 0.0 25.9 38.9#



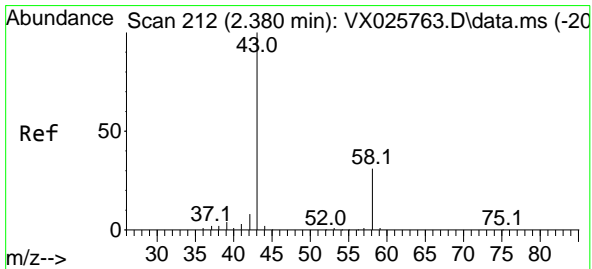
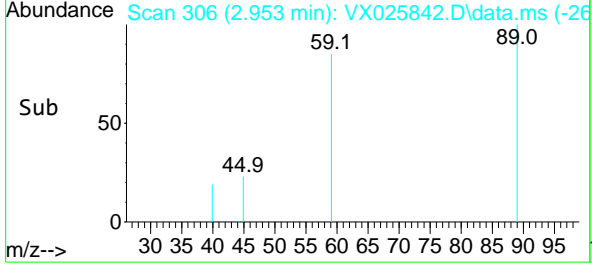
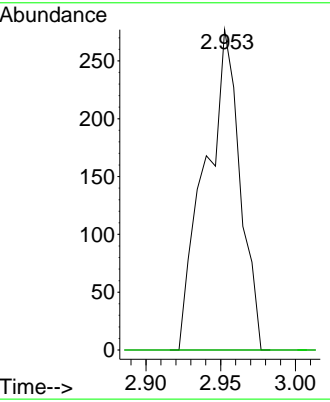


#11
 Tert butyl alcohol
 Concen: 1.050 ug/l
 RT: 2.953 min Scan# 306
 Delta R.T. -0.018 min
 Lab File: VX025842.D
 Acq: 16 Dec 2021 03:12

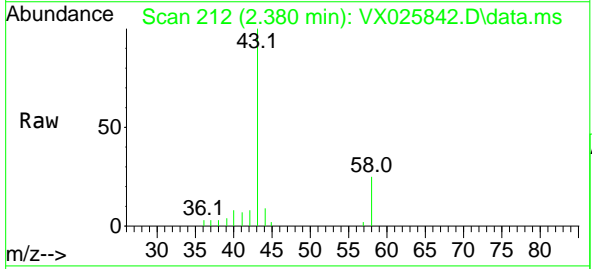
Instrument : MSVOA_X
 ClientSampleId : C5



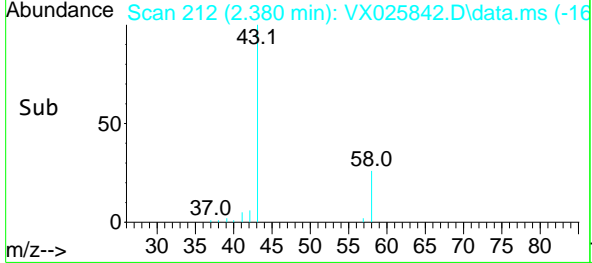
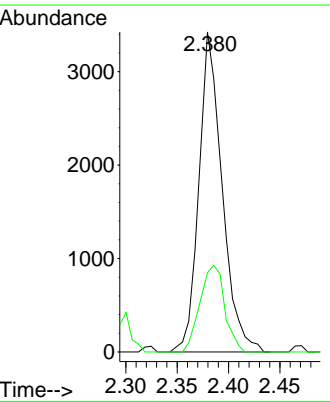
Tgt Ion: 59 Resp: 450
 Ion Ratio Lower Upper
 59 100
 57 0.0 8.2 12.2#

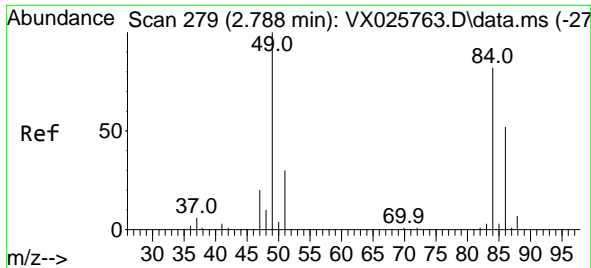


#16
 Acetone
 Concen: Below Cal
 RT: 2.380 min Scan# 212
 Delta R.T. -0.000 min
 Lab File: VX025842.D
 Acq: 16 Dec 2021 03:12



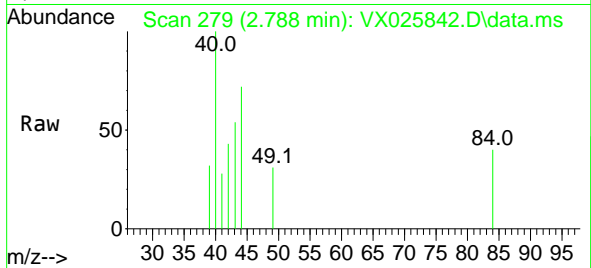
Tgt Ion: 43 Resp: 5381
 Ion Ratio Lower Upper
 43 100
 58 24.8 24.8 37.2#





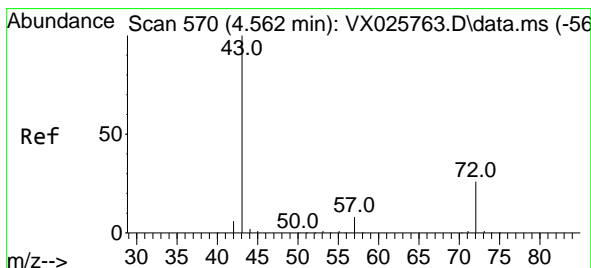
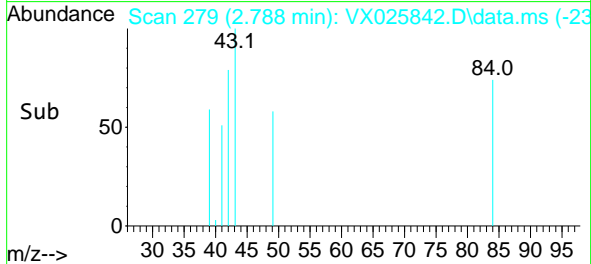
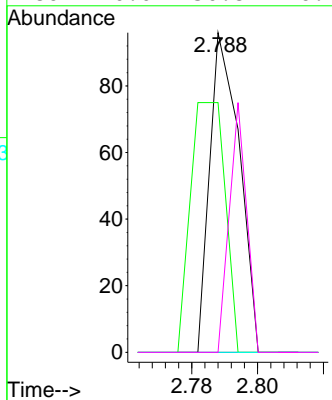
#20
 Methylene Chloride
 Concen: Below Cal
 RT: 2.788 min Scan# 21
 Delta R.T. -0.000 min
 Lab File: VX025842.D
 Acq: 16 Dec 2021 03:12

Instrument :
 MSVOA_X
 ClientSampleId :
 C5



Tgt Ion: 84 Resp: 60

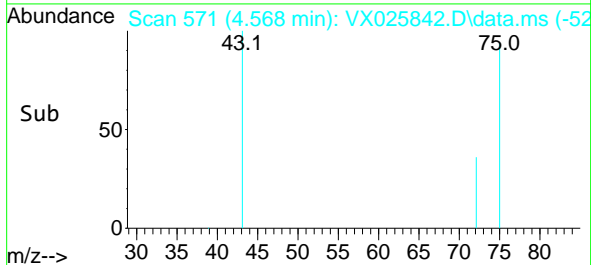
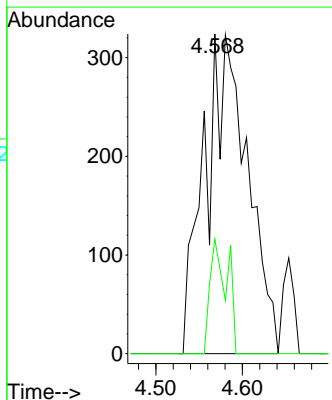
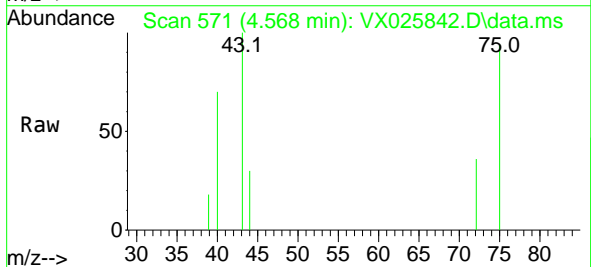
Ion	Ratio	Lower	Upper
84	100		
49	78.1	97.1	145.7#
51	0.0	29.3	43.9#
86	0.0	50.8	76.2#

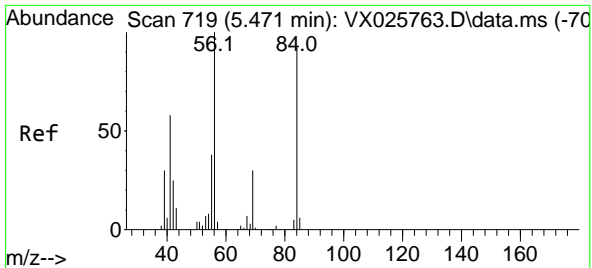


#25
 2-Butanone
 Concen: 0.780 ug/l
 RT: 4.568 min Scan# 571
 Delta R.T. 0.006 min
 Lab File: VX025842.D
 Acq: 16 Dec 2021 03:12

Tgt Ion: 43 Resp: 1120

Ion	Ratio	Lower	Upper
43	100		
72	35.8	21.0	31.4#

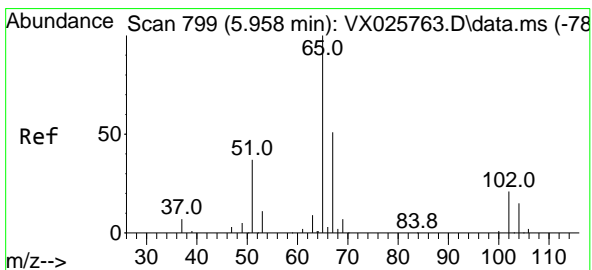
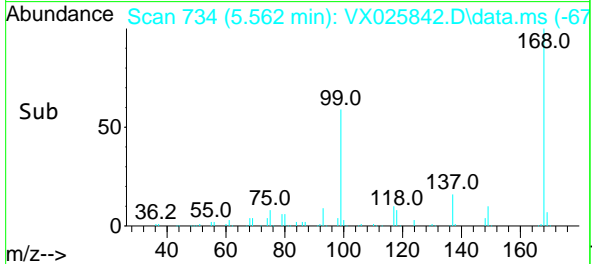
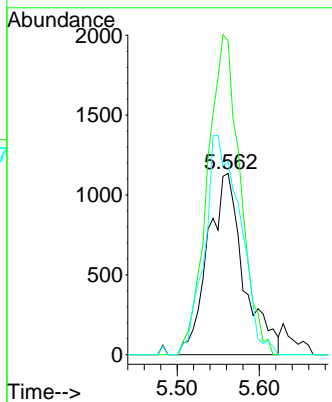
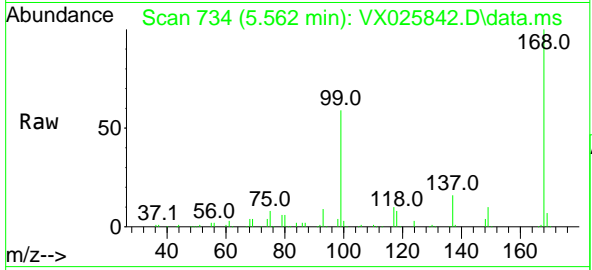




#31
 Cyclohexane
 Concen: 1.329 ug/l
 RT: 5.562 min Scan# 719
 Delta R.T. 0.091 min
 Lab File: VX025842.D
 Acq: 16 Dec 2021 03:12

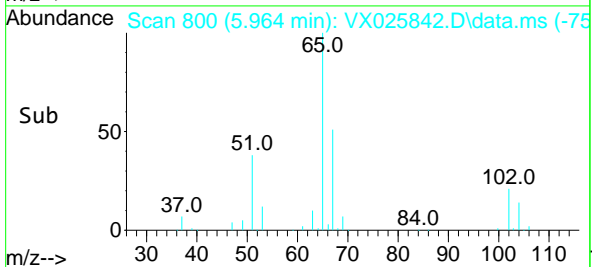
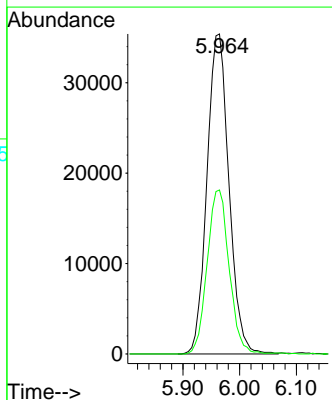
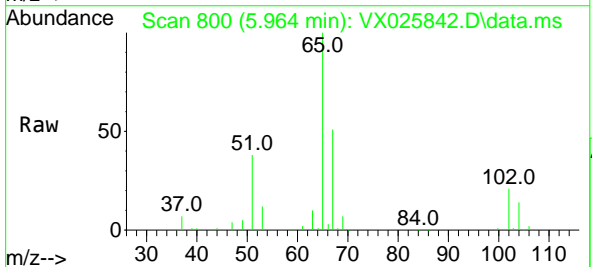
Instrument : MSVOA_X
 ClientSampleId : C5

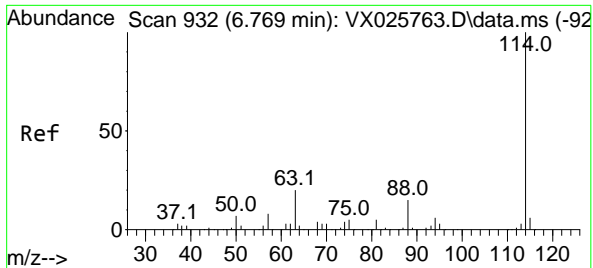
Tgt Ion	Resp	Lower	Upper
56	100		
69	173.3	23.9	35.9#
84	106.6	73.2	109.8



#33
 1,2-Dichloroethane-d4
 Concen: 44.583 ug/l
 RT: 5.964 min Scan# 800
 Delta R.T. 0.006 min
 Lab File: VX025842.D
 Acq: 16 Dec 2021 03:12

Tgt Ion	Resp	Lower	Upper
65	100		
67	51.1	0.0	103.4

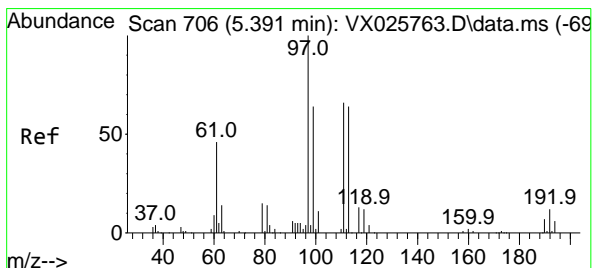
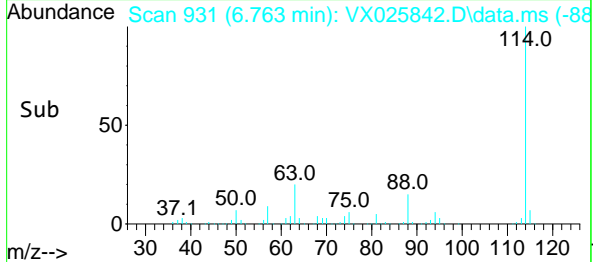
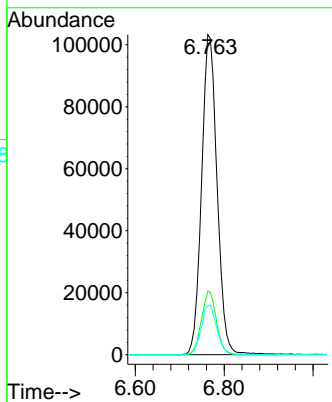
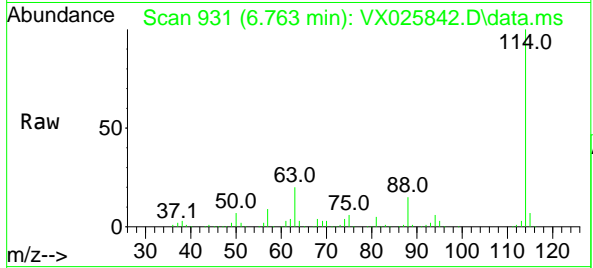




#34
 1,4-Difluorobenzene
 Concen: 50.000 ug/l
 RT: 6.763 min Scan# 91
 Delta R.T. -0.006 min
 Lab File: VX025842.D
 Acq: 16 Dec 2021 03:12

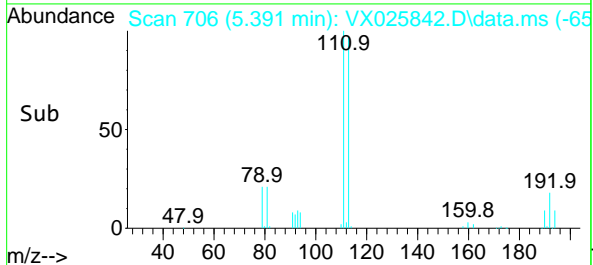
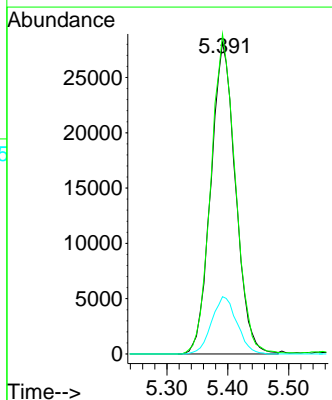
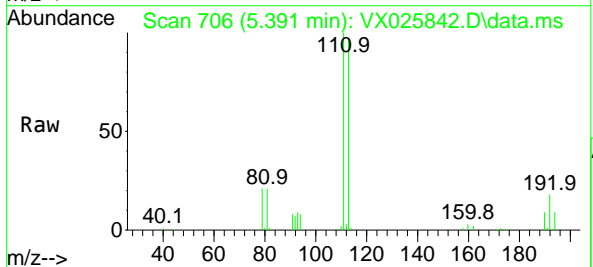
Instrument : MSVOA_X
 ClientSampleId : C5

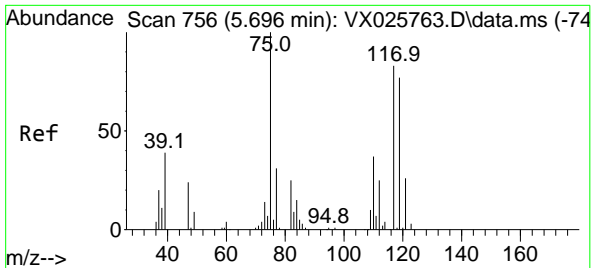
Tgt Ion	Resp	Lower	Upper
114	250685		
63	19.8	0.0	40.0
88	15.3	0.0	30.6



#35
 Dibromofluoromethane
 Concen: 45.307 ug/l
 RT: 5.391 min Scan# 706
 Delta R.T. -0.000 min
 Lab File: VX025842.D
 Acq: 16 Dec 2021 03:12

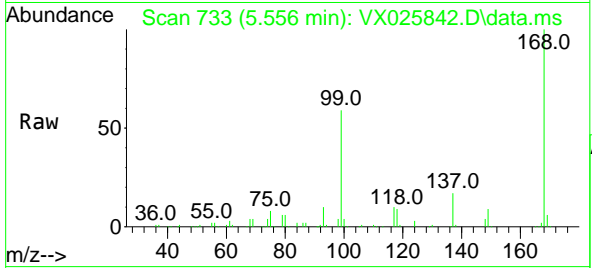
Tgt Ion	Resp	Lower	Upper
113	79211		
111	102.1	81.8	122.8
192	18.8	15.0	22.4



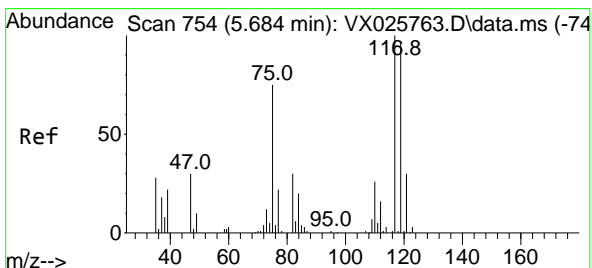
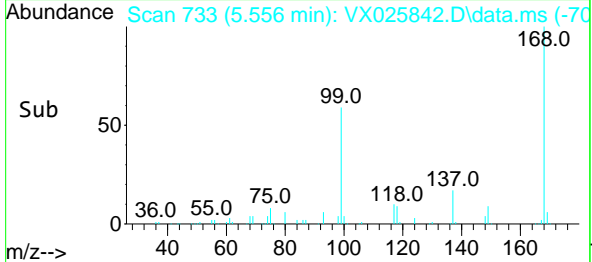
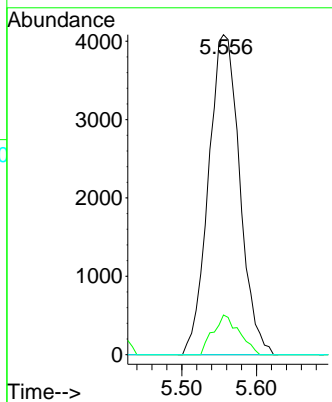


#36
 1,1-Dichloropropene
 Concen: 5.004 ug/l
 RT: 5.556 min Scan# 733
 Delta R.T. -0.140 min
 Lab File: VX025842.D
 Acq: 16 Dec 2021 03:12

Instrument : MSVOA_X
 ClientSampleId : C5

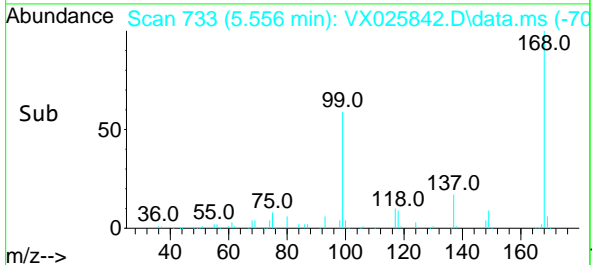
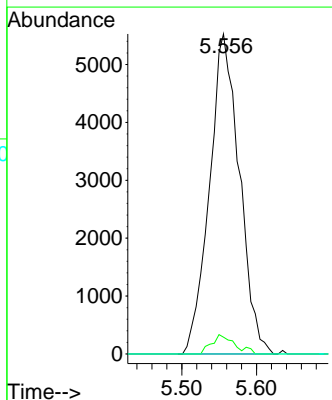
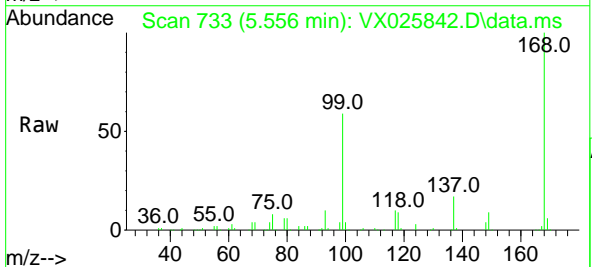


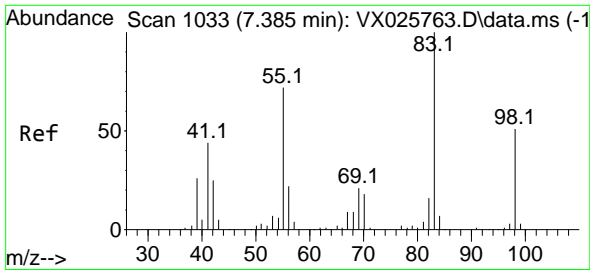
Tgt Ion: 75 Resp: 11864
 Ion Ratio Lower Upper
 75 100
 110 10.4 18.2 54.6#
 77 0.0 24.7 37.1#



#38
 Carbon Tetrachloride
 Concen: 5.585 ug/l
 RT: 5.556 min Scan# 733
 Delta R.T. -0.128 min
 Lab File: VX025842.D
 Acq: 16 Dec 2021 03:12

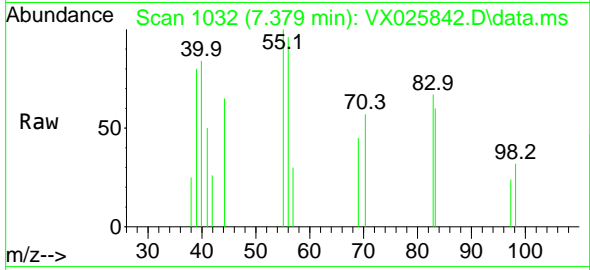
Tgt Ion: 117 Resp: 15407
 Ion Ratio Lower Upper
 117 100
 119 5.2 77.2 115.8#
 121 0.0 23.8 35.8#



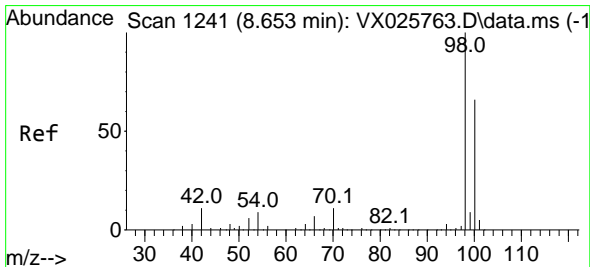
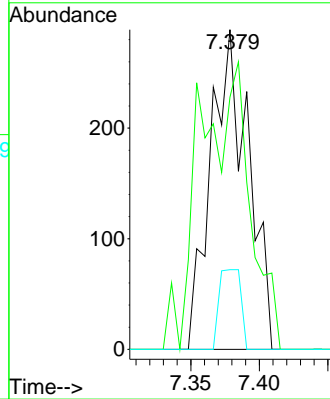
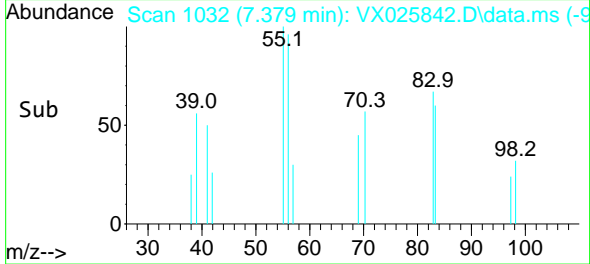


#39
 Methylcyclohexane
 Concen: 0.208 ug/l
 RT: 7.379 min Scan# 1032
 Delta R.T. -0.006 min
 Lab File: VX025842.D
 Acq: 16 Dec 2021 03:12

Instrument :
 MSVOA_X
 ClientSampleId :
 C5

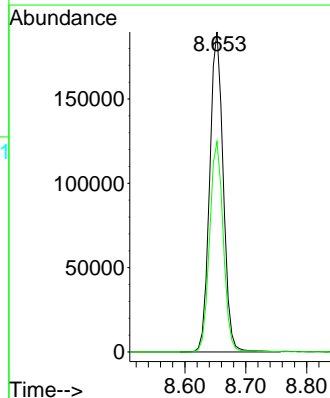
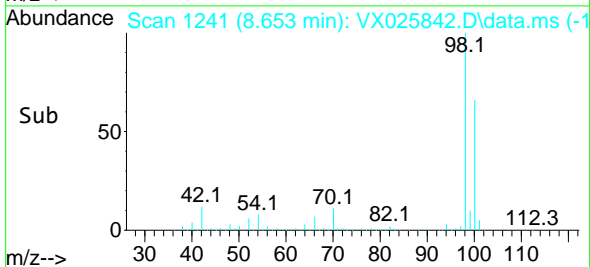
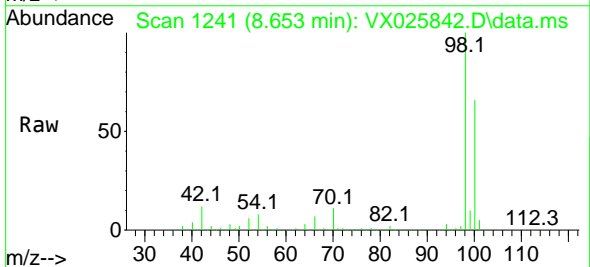


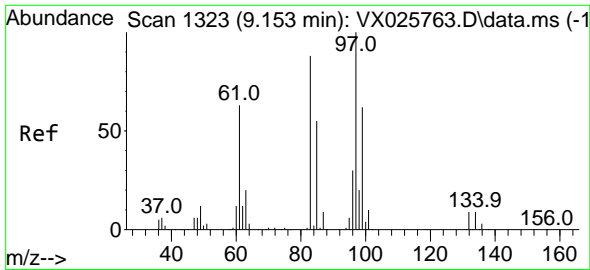
Tgt Ion: 83 Resp: 553
 Ion Ratio Lower Upper
 83 100
 55 78.9 57.8 86.8
 98 24.9 40.5 60.7#



#50
 Toluene-d8
 Concen: 45.905 ug/l
 RT: 8.653 min Scan# 1241
 Delta R.T. -0.000 min
 Lab File: VX025842.D
 Acq: 16 Dec 2021 03:12

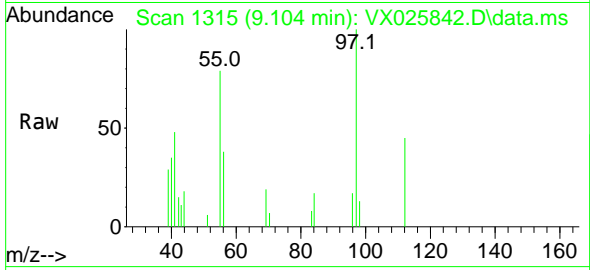
Tgt Ion: 98 Resp: 292412
 Ion Ratio Lower Upper
 98 100
 100 66.1 52.6 78.8





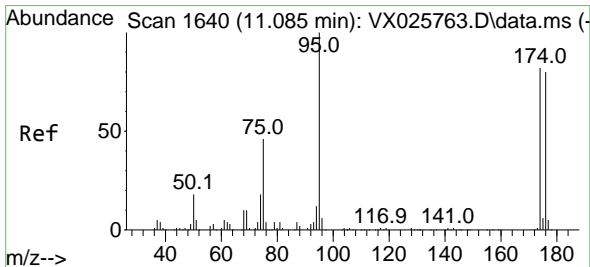
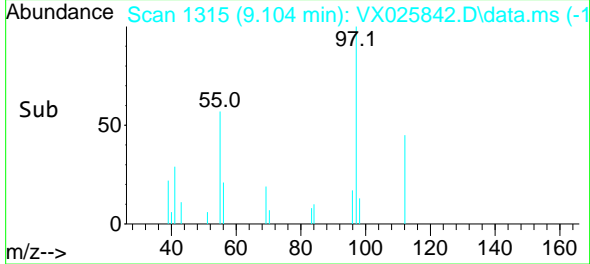
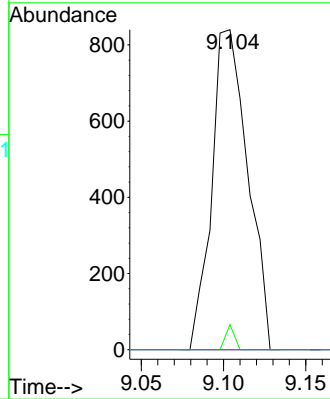
#55
 1,1,2-Trichloroethane
 Concen: 0.663 ug/l
 RT: 9.104 min Scan# 11
 Delta R.T. -0.049 min
 Lab File: VX025842.D
 Acq: 16 Dec 2021 03:12

Instrument :
 MSVOA_X
 ClientSampleId :
 C5



Tgt Ion: 97 Resp: 1281

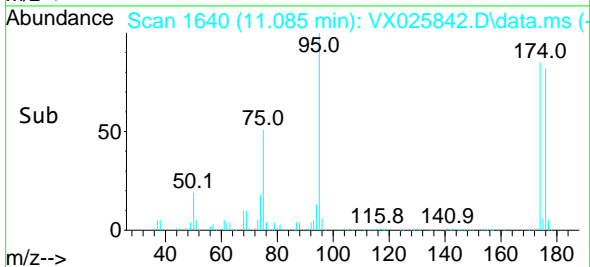
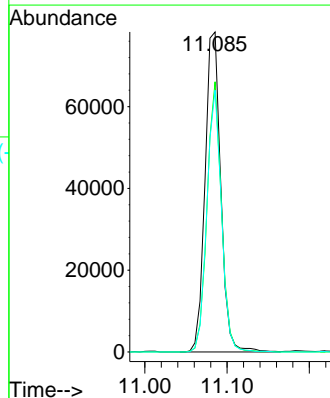
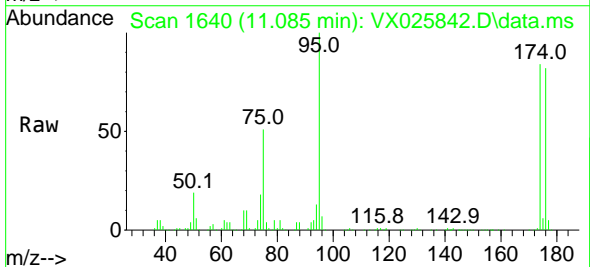
Ion	Ratio	Lower	Upper
97	100		
83	7.9	70.5	105.7#
85	0.0	43.8	65.6#
99	0.0	49.4	74.2#

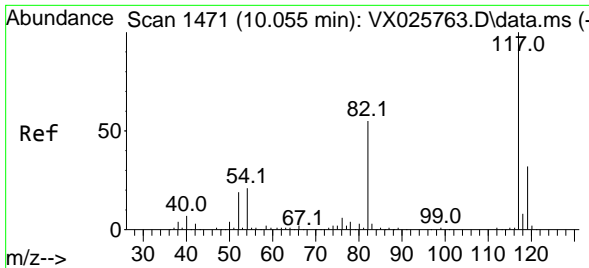


#62
 4-Bromofluorobenzene
 Concen: 42.887 ug/l
 RT: 11.085 min Scan# 1640
 Delta R.T. -0.000 min
 Lab File: VX025842.D
 Acq: 16 Dec 2021 03:12

Tgt Ion: 95 Resp: 103774

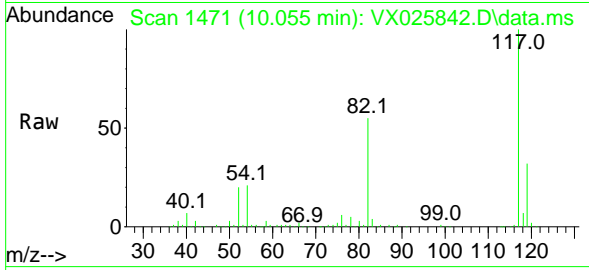
Ion	Ratio	Lower	Upper
95	100		
174	77.4	0.0	157.4
176	76.3	0.0	154.6



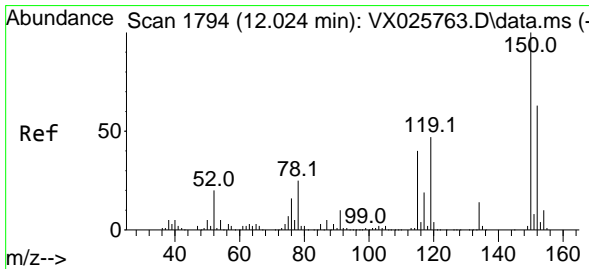
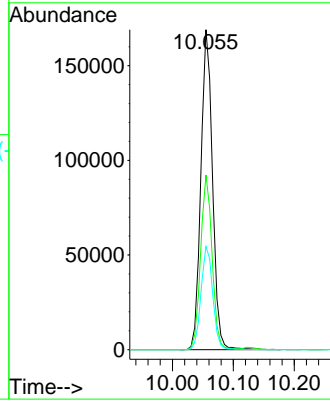
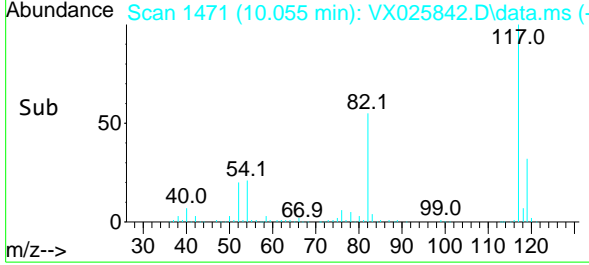


#63
 Chlorobenzene-d5
 Concen: 50.000 ug/l
 RT: 10.055 min Scan# 1471
 Delta R.T. -0.000 min
 Lab File: VX025842.D
 Acq: 16 Dec 2021 03:12

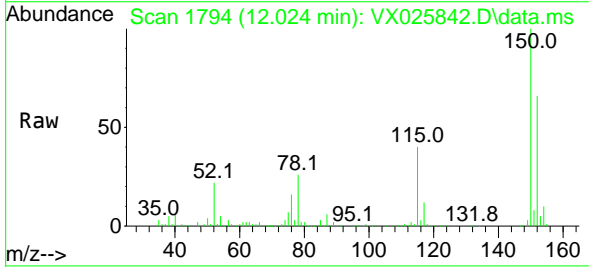
Instrument : MSVOA_X
 ClientSampleId : C5



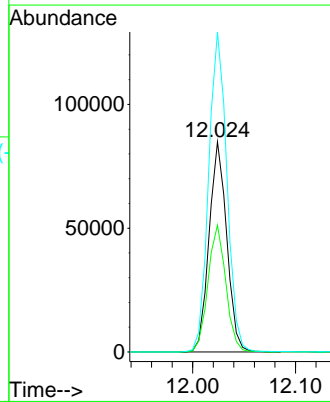
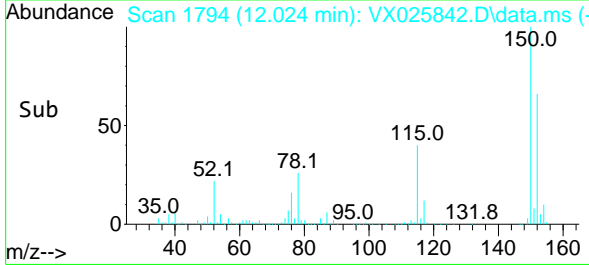
Tgt Ion:117 Resp: 224679
 Ion Ratio Lower Upper
 117 100
 82 54.6 43.8 65.6
 119 32.2 25.2 37.8

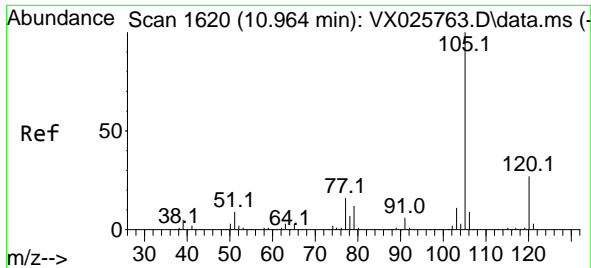


#72
 1,4-Dichlorobenzene-d4
 Concen: 50.000 ug/l
 RT: 12.024 min Scan# 1794
 Delta R.T. -0.000 min
 Lab File: VX025842.D
 Acq: 16 Dec 2021 03:12



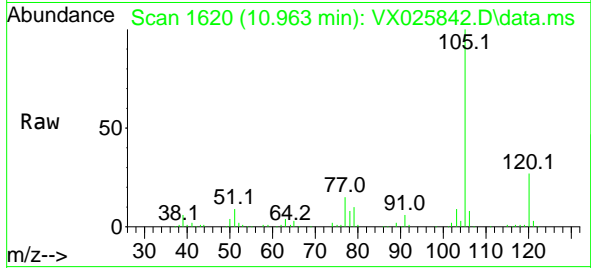
Tgt Ion:152 Resp: 101600
 Ion Ratio Lower Upper
 152 100
 115 60.9 41.3 123.9
 150 157.2 0.0 351.8



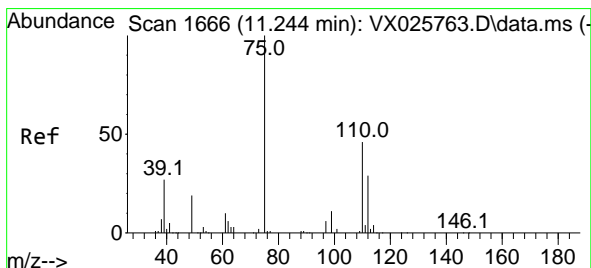
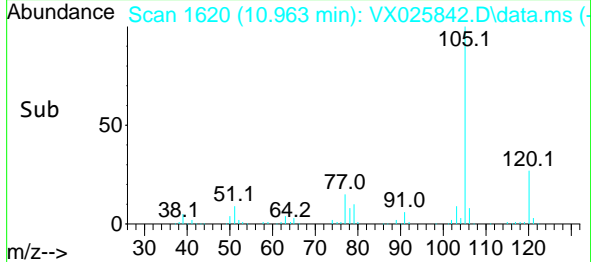
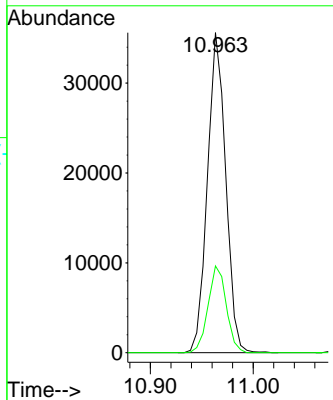


#73
 Isopropylbenzene
 Concen: 5.981 ug/l
 RT: 10.963 min Scan# 1640
 Delta R.T. -0.000 min
 Lab File: VX025842.D
 Acq: 16 Dec 2021 03:12

Instrument : MSVOA_X
 ClientSampleId : C5

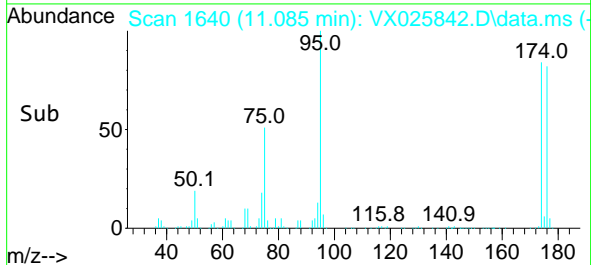
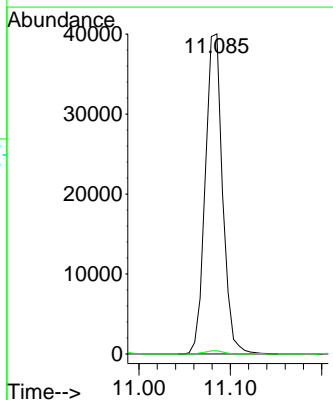
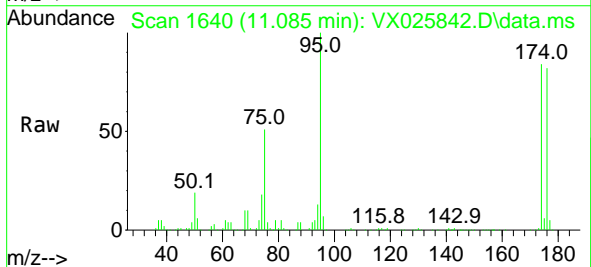


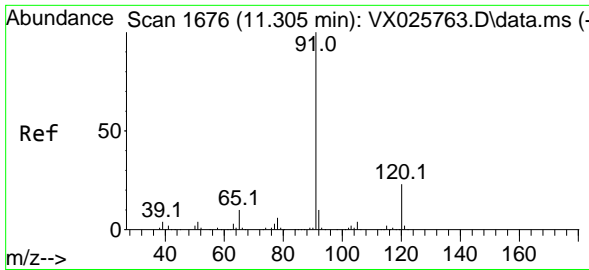
Tgt Ion:105 Resp: 44103
 Ion Ratio Lower Upper
 105 100
 120 27.0 13.6 40.7



#76
 1,2,3-Trichloropropane
 Concen: 22.528 ug/l
 RT: 11.085 min Scan# 1640
 Delta R.T. -0.159 min
 Lab File: VX025842.D
 Acq: 16 Dec 2021 03:12

Tgt Ion: 75 Resp: 52441
 Ion Ratio Lower Upper
 75 100
 77 1.1 19.0 57.0#

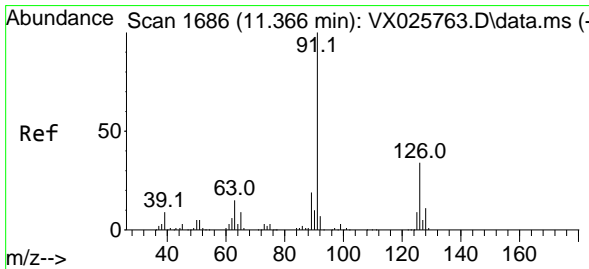
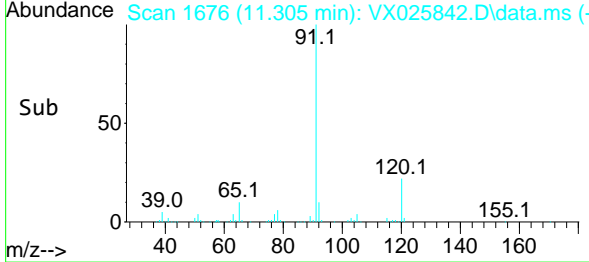
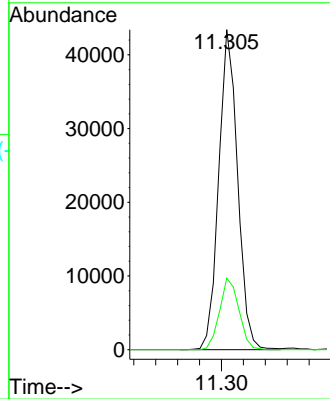
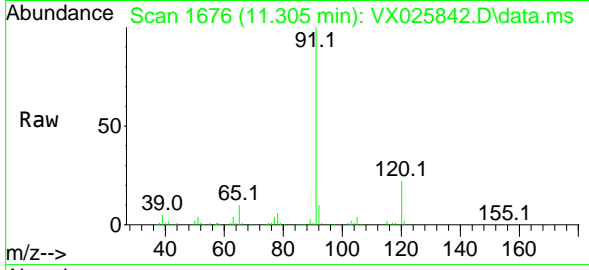




#78
 n-propylbenzene
 Concen: 6.225 ug/l
 RT: 11.305 min Scan# 1676
 Delta R.T. -0.000 min
 Lab File: VX025842.D
 Acq: 16 Dec 2021 03:12

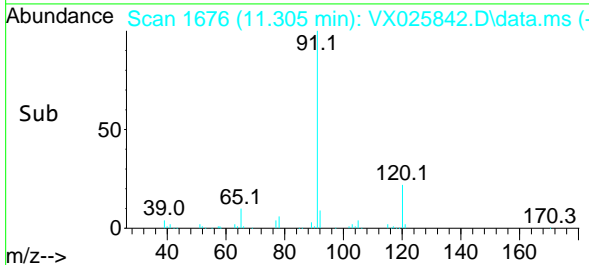
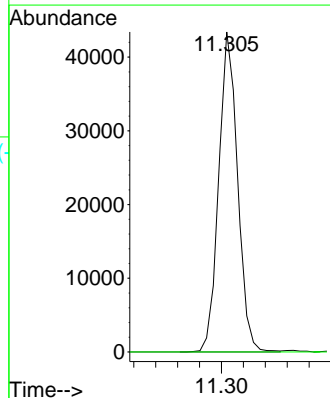
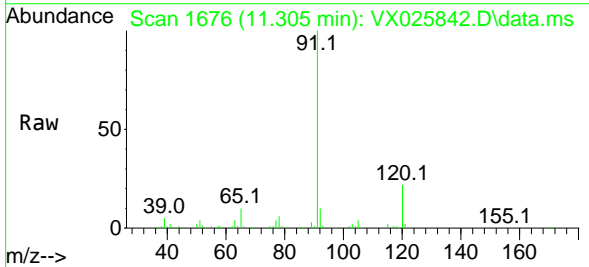
Instrument : MSVOA_X
 ClientSampleId : C5

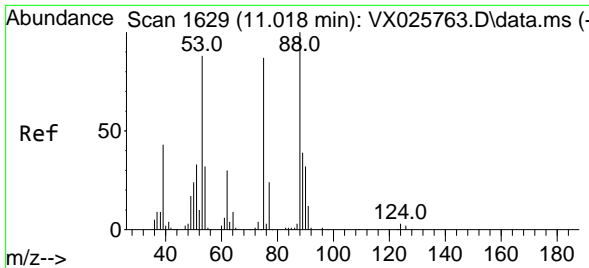
Tgt Ion: 91 Resp: 51923
 Ion Ratio Lower Upper
 91 100
 120 22.9 12.0 36.1



#79
 2-Chlorotoluene
 Concen: 9.790 ug/l
 RT: 11.305 min Scan# 1676
 Delta R.T. -0.061 min
 Lab File: VX025842.D
 Acq: 16 Dec 2021 03:12

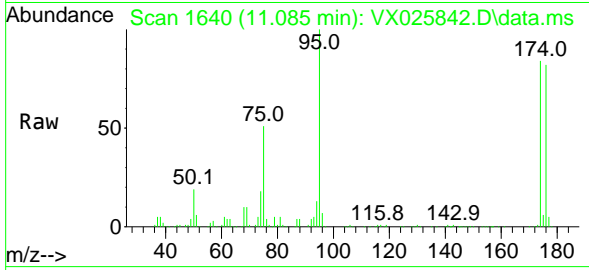
Tgt Ion: 91 Resp: 51923
 Ion Ratio Lower Upper
 91 100
 126 0.0 17.8 53.3#



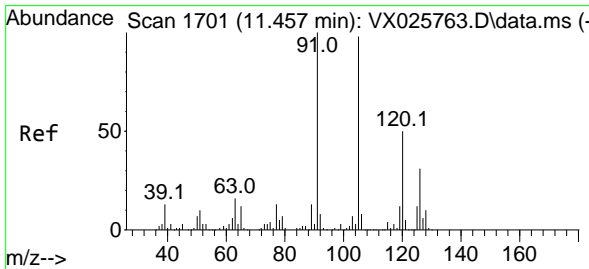
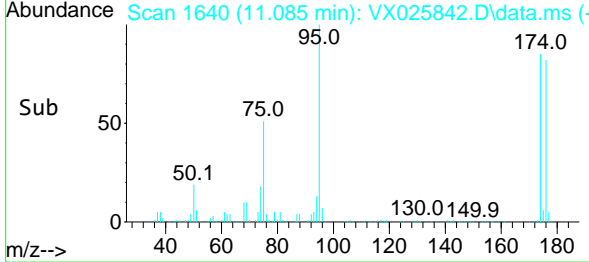
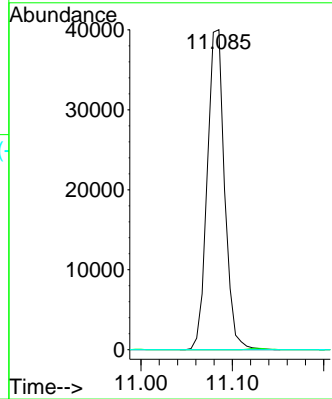


#81
 trans-1,4-Dichloro-2-butene
 Concen: 69.842 ug/l
 RT: 11.085 min Scan# 1640
 Delta R.T. 0.067 min
 Lab File: VX025842.D
 Acq: 16 Dec 2021 03:12

Instrument :
 MSVOA_X
 ClientSampleId :
 C5

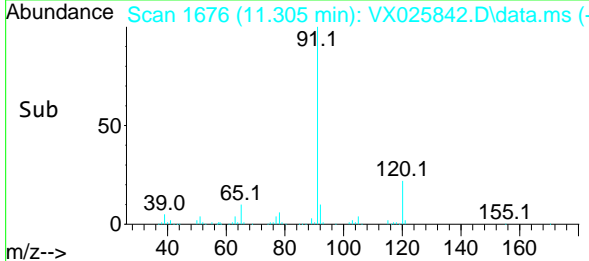
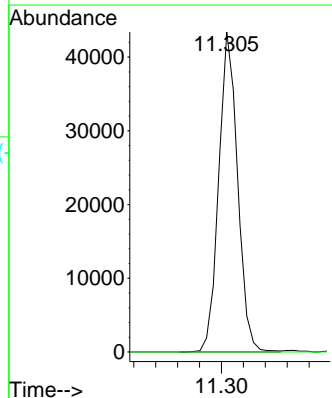
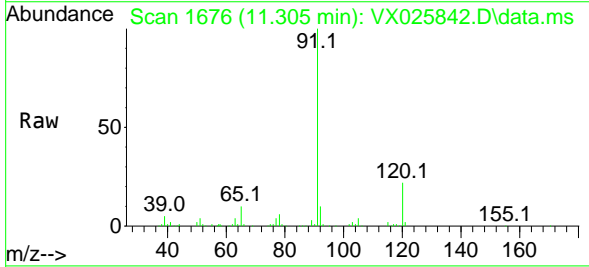


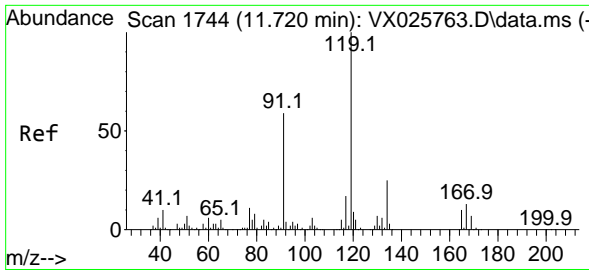
Tgt Ion: 75 Resp: 52441
 Ion Ratio Lower Upper
 75 100
 53 0.0 79.5 119.3#
 89 0.0 38.3 57.5#



#82
 4-Chlorotoluene
 Concen: 8.742 ug/l
 RT: 11.305 min Scan# 1676
 Delta R.T. -0.153 min
 Lab File: VX025842.D
 Acq: 16 Dec 2021 03:12

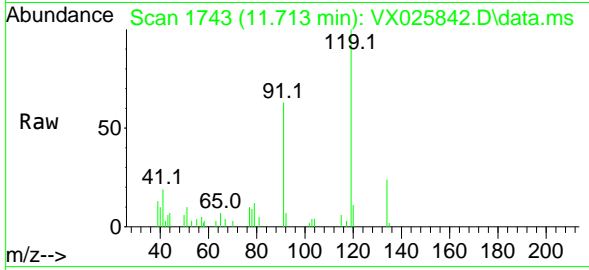
Tgt Ion: 91 Resp: 51923
 Ion Ratio Lower Upper
 91 100
 126 0.0 15.6 46.7#





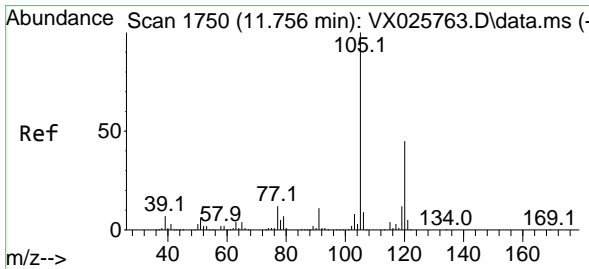
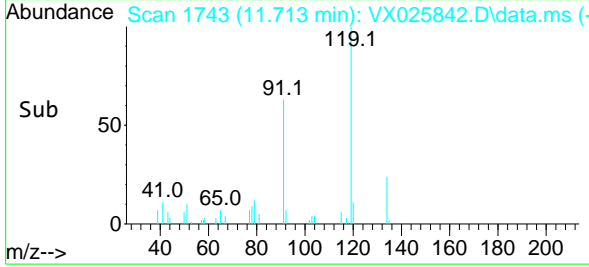
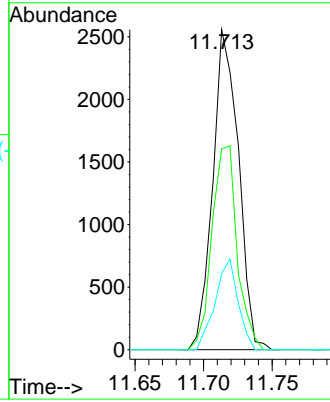
#83
 tert-Butylbenzene
 Concen: 0.556 ug/l
 RT: 11.713 min Scan# 1743
 Delta R.T. -0.006 min
 Lab File: VX025842.D
 Acq: 16 Dec 2021 03:12

Instrument : MSVOA_X
 ClientSampleId : C5



Tgt Ion:119 Resp: 3333

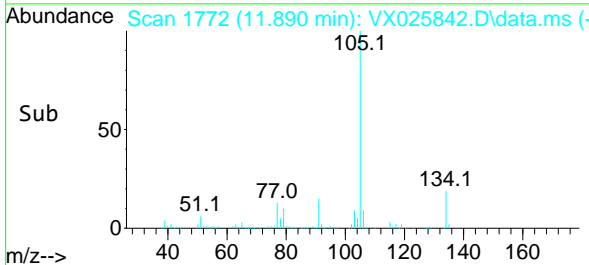
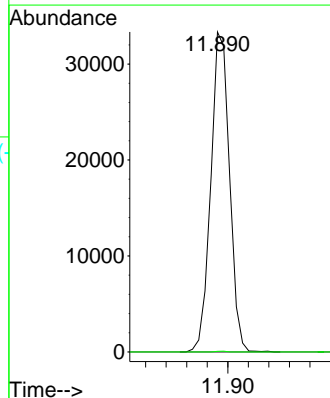
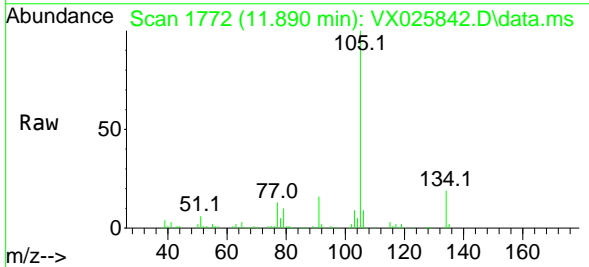
Ion	Ratio	Lower	Upper
119	100		
91	62.4	28.7	86.1
134	25.2	11.9	35.9

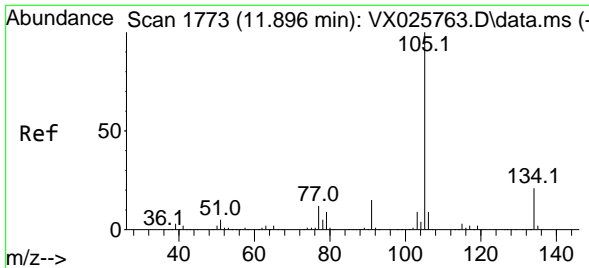


#84
 1,2,4-Trimethylbenzene
 Concen: 6.880 ug/l
 RT: 11.890 min Scan# 1772
 Delta R.T. 0.134 min
 Lab File: VX025842.D
 Acq: 16 Dec 2021 03:12

Tgt Ion:105 Resp: 42032

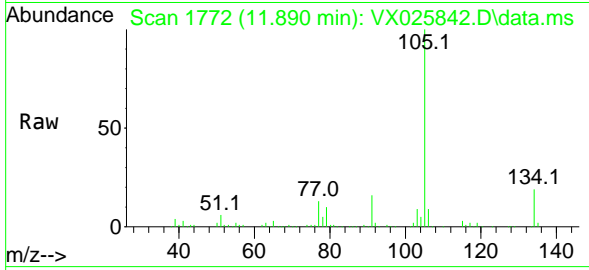
Ion	Ratio	Lower	Upper
105	100		
120	0.1	22.9	68.7#



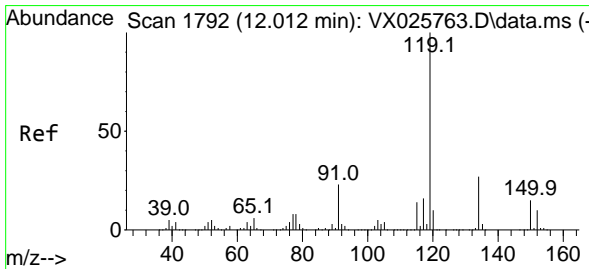
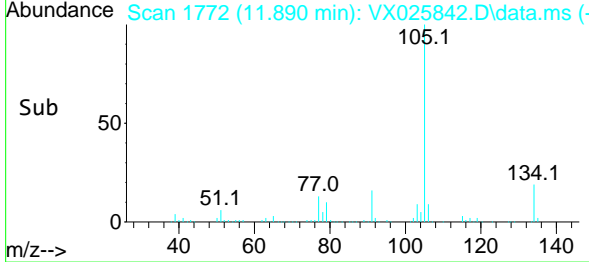
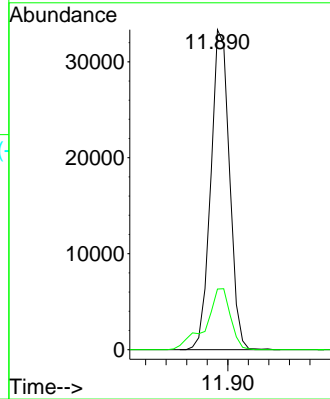


#85
 sec-Butylbenzene
 Concen: 5.834 ug/l
 RT: 11.890 min Scan# 11
 Delta R.T. -0.006 min
 Lab File: VX025842.D
 Acq: 16 Dec 2021 03:12

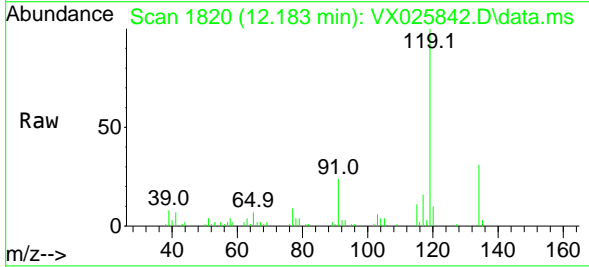
Instrument :
 MSVOA_X
 ClientSampleId :
 C5



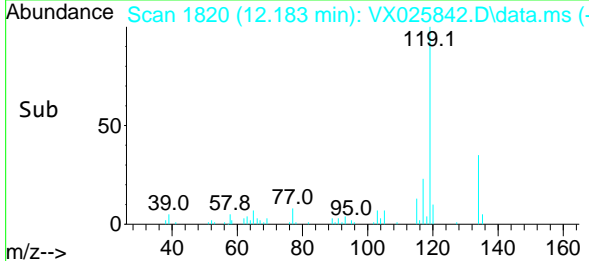
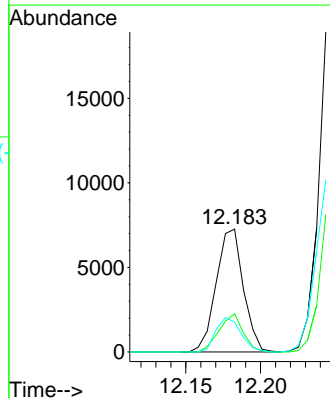
Tgt Ion:105 Resp: 42032
 Ion Ratio Lower Upper
 105 100
 134 25.1 10.4 31.1

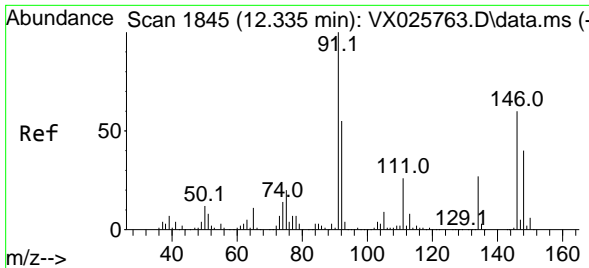


#86
 p-Isopropyltoluene
 Concen: 1.518 ug/l
 RT: 12.183 min Scan# 1820
 Delta R.T. 0.170 min
 Lab File: VX025842.D
 Acq: 16 Dec 2021 03:12



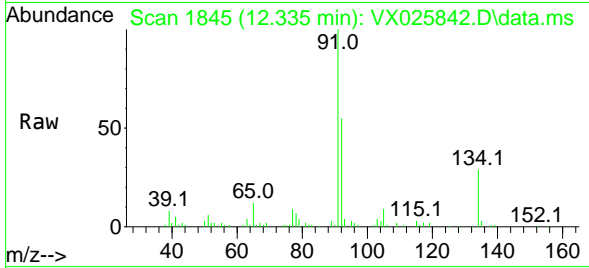
Tgt Ion:119 Resp: 9186
 Ion Ratio Lower Upper
 119 100
 134 27.5 13.2 39.6
 91 26.0 11.9 35.9



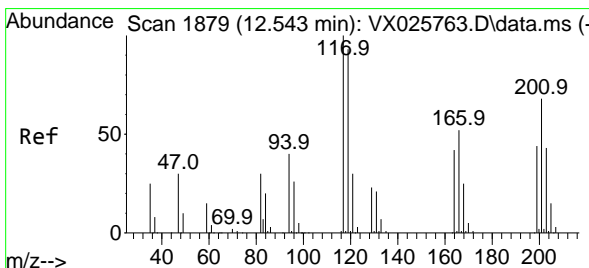
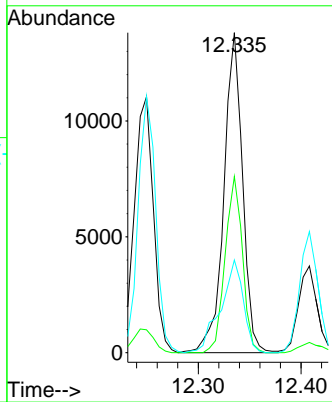
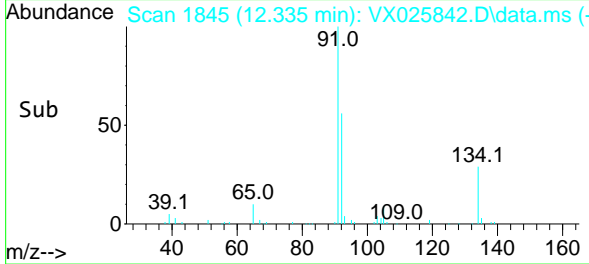


#89
 n-Butylbenzene
 Concen: 3.454 ug/l
 RT: 12.335 min Scan# 1845
 Delta R.T. -0.000 min
 Lab File: VX025842.D
 Acq: 16 Dec 2021 03:12

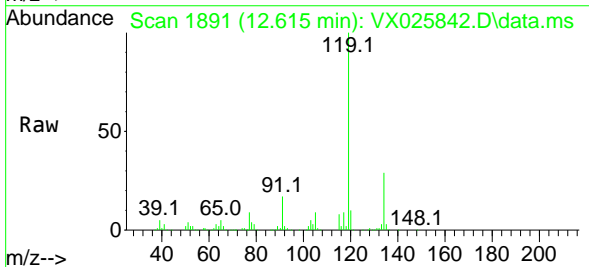
Instrument : MSVOA_X
 ClientSampleId : C5



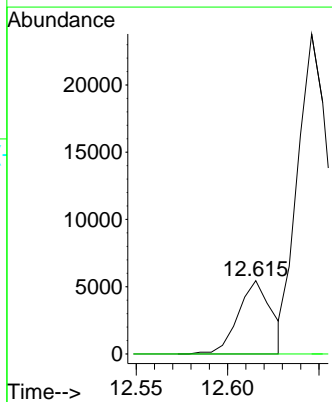
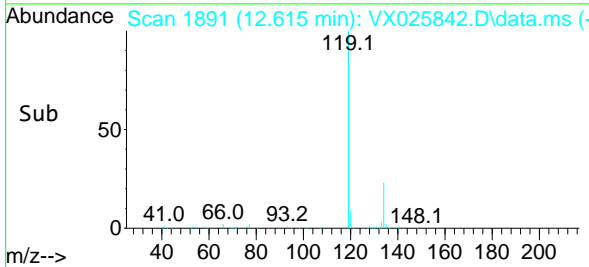
Tgt Ion: 91 Resp: 17436
 Ion Ratio Lower Upper
 91 100
 92 50.8 27.3 81.8
 134 35.2 13.5 40.4

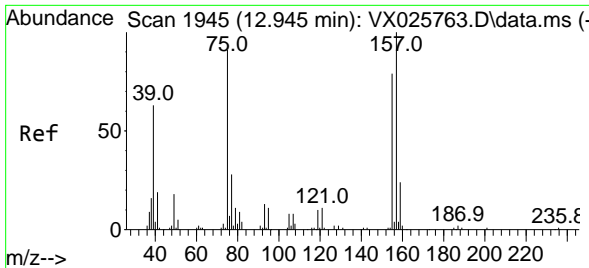


#90
 Hexachloroethane
 Concen: 5.806 ug/l
 RT: 12.615 min Scan# 1891
 Delta R.T. 0.073 min
 Lab File: VX025842.D
 Acq: 16 Dec 2021 03:12



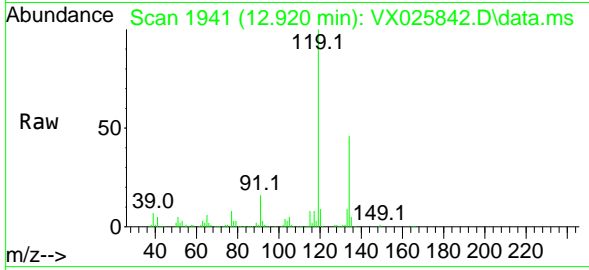
Tgt Ion: 117 Resp: 6905
 Ion Ratio Lower Upper
 117 100
 201 0.0 35.4 106.3#





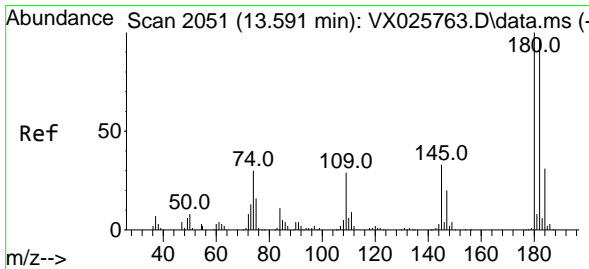
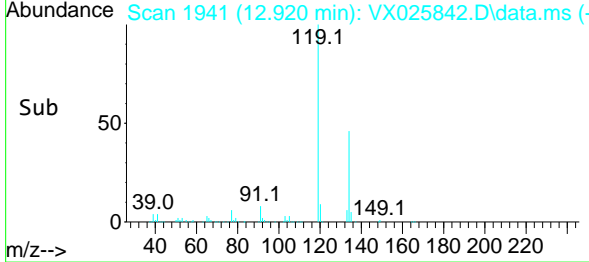
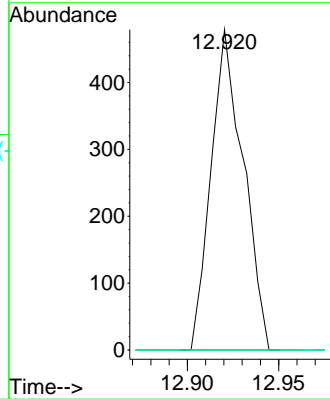
#92
 1,2-Dibromo-3-Chloropropane
 Concen: 1.020 ug/l
 RT: 12.920 min Scan# 1941
 Delta R.T. -0.025 min
 Lab File: VX025842.D
 Acq: 16 Dec 2021 03:12

Instrument : MSVOA_X
 ClientSampleId : C5



Tgt Ion: 75 Resp: 589

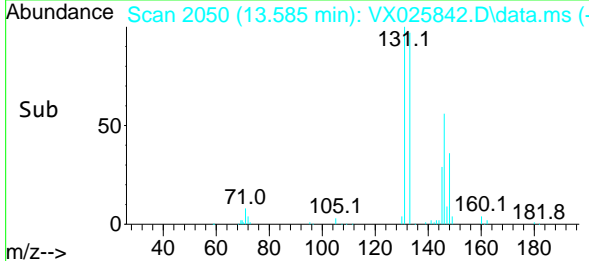
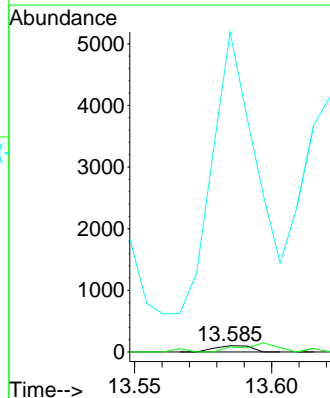
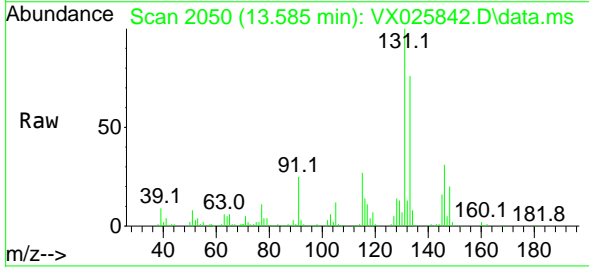
Ion	Ratio	Lower	Upper
75	100		
155	0.0	44.0	131.8#
157	0.0	55.5	166.5#

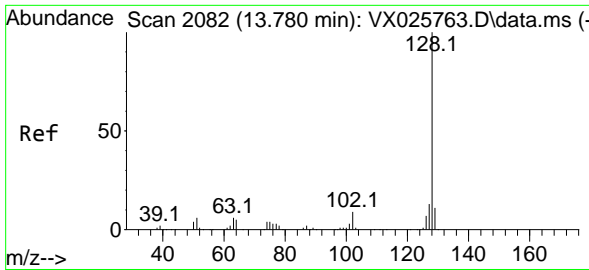


#93
 1,2,4-Trichlorobenzene
 Concen: 3.414 ug/l
 RT: 13.585 min Scan# 2050
 Delta R.T. -0.006 min
 Lab File: VX025842.D
 Acq: 16 Dec 2021 03:12

Tgt Ion: 180 Resp: 94

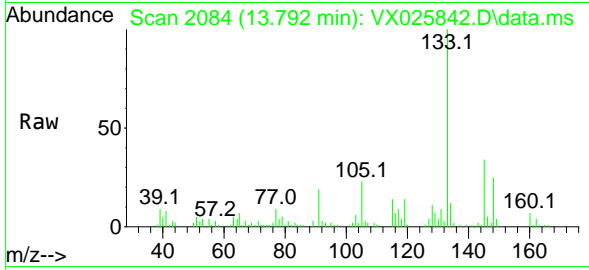
Ion	Ratio	Lower	Upper
180	100		
182	163.8	47.2	141.6#
145	6112.8	16.3	48.9#



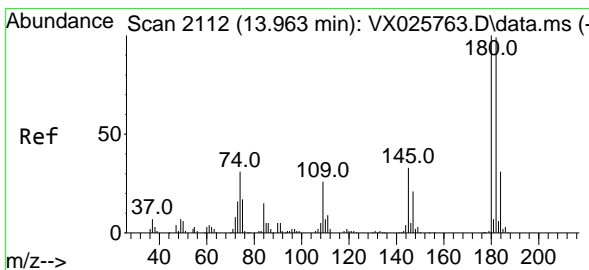
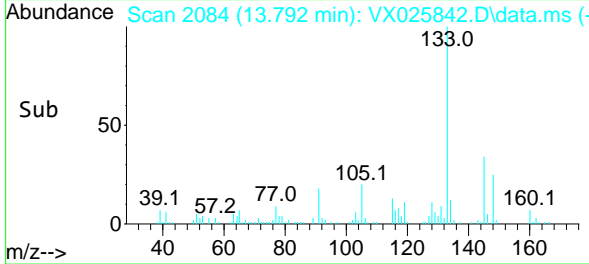
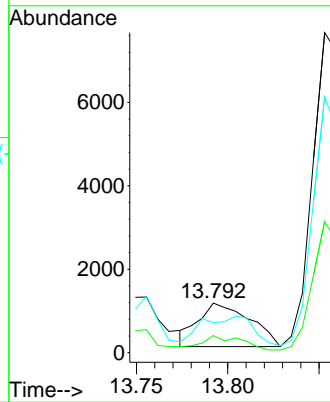


#95
 Naphthalene
 Concen: 2.693 ug/l
 RT: 13.792 min Scan# 2084
 Delta R.T. 0.012 min
 Lab File: VX025842.D
 Acq: 16 Dec 2021 03:12

Instrument :
 MSVOA_X
 ClientSampleId :
 C5



Tgt Ion:128 Resp: 2052
 Ion Ratio Lower Upper
 128 100
 127 24.9 10.3 15.5#
 129 67.5 8.8 13.2#



#96
 1,2,3-Trichlorobenzene
 Concen: 3.016 ug/l
 RT: 13.963 min Scan# 2112
 Delta R.T. -0.000 min
 Lab File: VX025842.D
 Acq: 16 Dec 2021 03:12

Tgt Ion:180 Resp: 48
 Ion Ratio Lower Upper
 180 100
 182 129.2 47.5 142.6
 145 20754.2 16.7 50.1#

