

Data Path : Z:\voasrv\HPCHEM1\MSVOA_X\Data\VX121720\
 Data File : VX020102.D
 Acq On : 17 Dec 2020 06:17
 Operator : JC/MD
 Sample : L5043-12
 Misc : 5.0mL/MSVOA_X/WATER
 ALS Vial : 41 Sample Multiplier: 1

Instrument :
 MSVOA_X
 ClientSampleId :
 TRIP-BLANK

Integration Parameters: RTEINT.P
 Integrator: RTE
 Smoothing : ON Filtering: 5
 Sampling : 1 Min Area: 3 % of Largest Peak
 Start Thrs: 0.2 Max Peaks: 100
 Stop Thrs : 0 Peak Location: TOP

If leading or trailing edge < 100 prefer < Baseline drop else tangent >
 Peak separation: 5

Method : Z:\VOASRV\HPCHEM1\MSVOA_X\METHOD\82X120420W.M
 Title : SW846 8260

Signal : TIC: VX020102.D

peak #	R.T. min	first scan	max scan	last scan	PK TY	peak height	corr. area	corr. % max.	% of total
1	1.593	73	83	88	rBV4	6554	16230	1.04%	0.200%
2	2.995	305	313	321	rBV	6771	15794	1.01%	0.195%
3	5.458	706	717	731	rBV2	173285	501124	32.15%	6.188%
4	5.629	733	745	762	rVB	304179	859560	55.15%	10.614%
5	6.031	798	811	826	rBV	198146	528480	33.91%	6.526%
6	6.830	931	942	959	rBV	483455	1132519	72.66%	13.985%
7	8.696	1240	1248	1261	rBV	1008614	1558698	100.00%	19.248%
8	10.092	1471	1477	1489	rBV	980765	1337693	85.82%	16.519%
9	11.122	1640	1646	1662	rVB	752401	971235	62.31%	11.993%
10	12.061	1794	1800	1811	rBV	981388	1176797	75.50%	14.532%

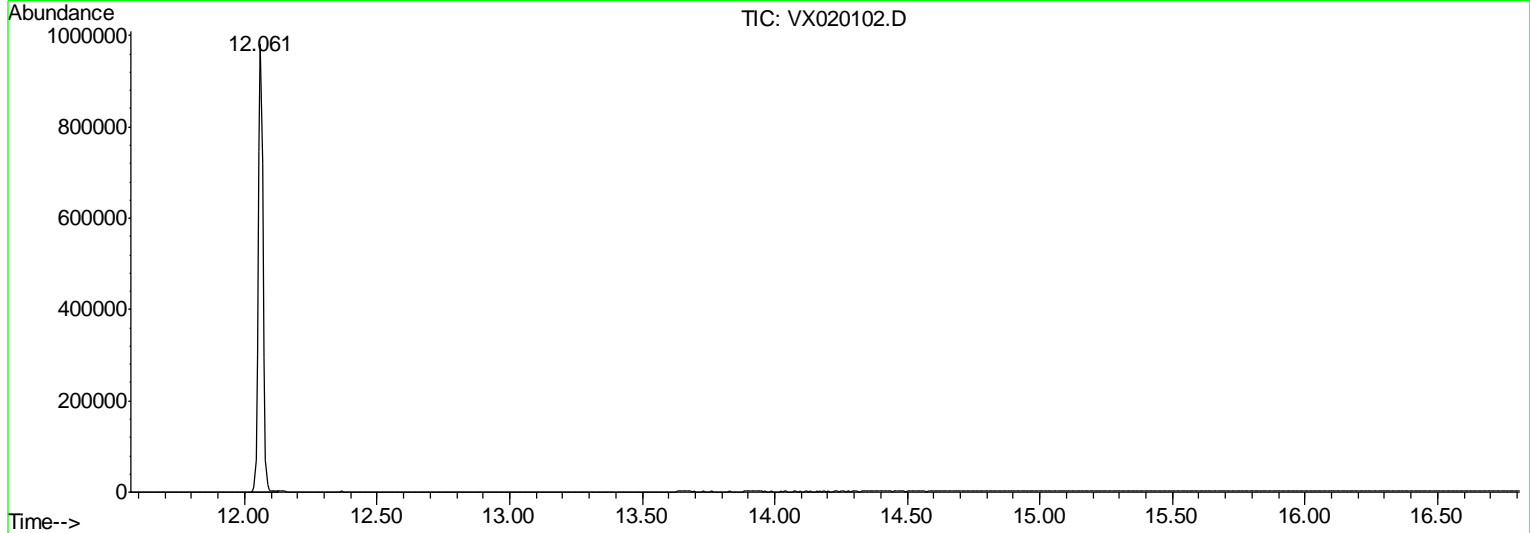
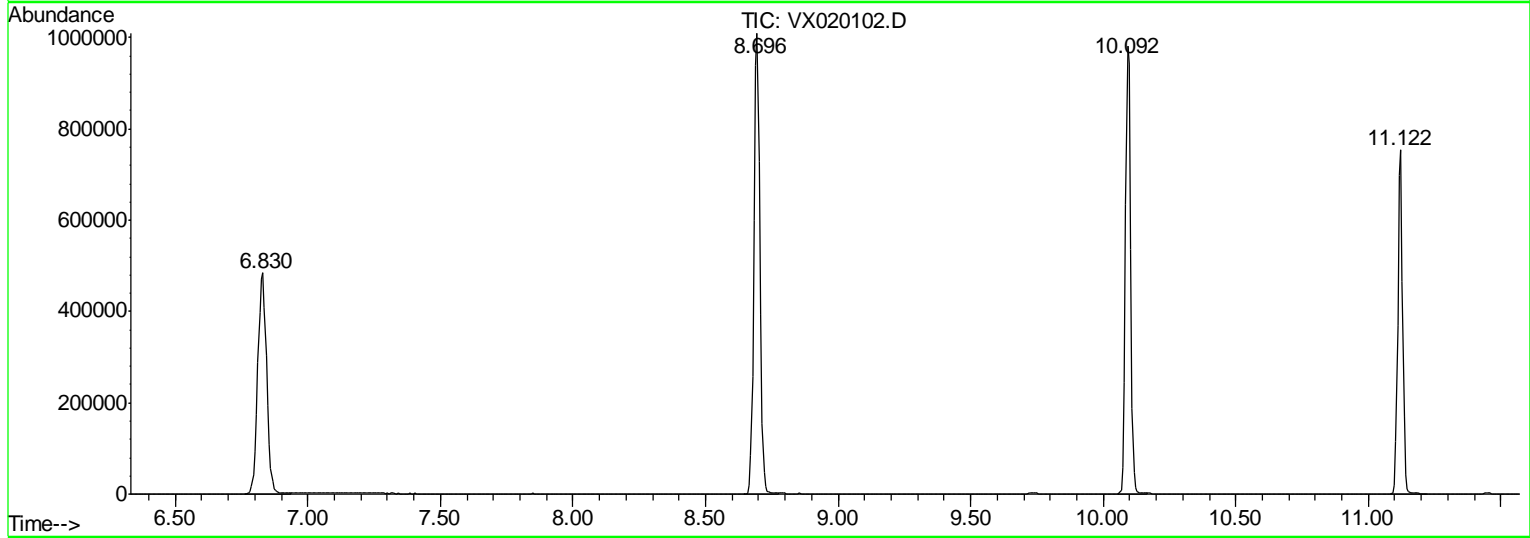
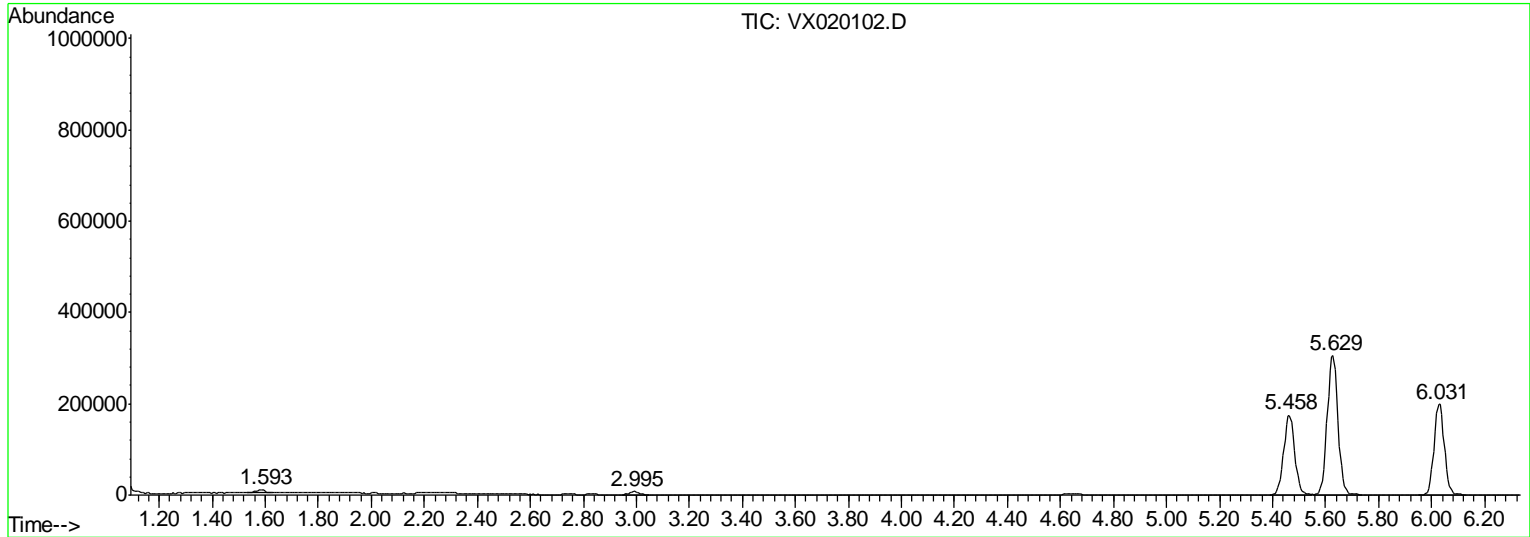
Sum of corrected areas: 8098130

Data Path : Z:\voasrv\HPCHEM1\MSVOA_X\Data\VX121720\
 Data File : VX020102.D
 Acq On : 17 Dec 2020 06:17
 Operator : JC/MD
 Sample : L5043-12
 Mi sc : 5.0mL/MSVOA_X/WATER
 ALS Vial : 41 Sample Multiplier: 1

Instrument :
 MSVOA_X
Client Sampled :
 TRIP-BLANK

Quant Method : Z:\VOASRV\HPCHEM1\MSVOA_X\METHCD\82X120420W.M
 Quant Title : SW846 8260

TIC Library : C:\DATABASE\NI ST11.L
 TIC Integration Parameters: LSCINT.P



Data Path : Z:\voasrv\HPCHEM1\MSVOA_X\Data\VX121720\
Data File : VX020102.D
Acq On : 17 Dec 2020 06:17
Operator : JC/MD
Sample : L5043-12
Misc : 5.0mL/MSVOA_X/WATER
ALS Vial : 41 Sample Multiplier: 1

Instrument :
MSVOA_X
ClientSampled :
TRIP-BLANK

Quant Method : Z:\VOASRV\HPCHEM1\MSVOA_X\METHOD\82X120420W.M
Quant Title : SW846 8260

TIC Library : C:\DATABASE\NI ST11.L
TIC Integration Parameters: LSCINT.P

No Library Search Compounds Detected

Data Path : Z:\voasrv\HPCHEM1\MSVOA_X\Data\VX121720\
Data File : VX020102.D
Acq On : 17 Dec 2020 06:17
Operator : JC/MD
Sample : L5043-12
Misc : 5.0mL/MSVOA_X/WATER
ALS Vial : 41 Sample Multiplier: 1

Instrument :
MSVOA_X
ClientSampled :
TRIP-BLANK

Quant Method : Z:\VOASRV\HPCHEM1\MSVOA_X\METHOD\82X120420W.M
Quant Title : SW846 8260

TIC Library : C:\DATABASE\NI ST11.L
TIC Integration Parameters: LSCINT.P

TIC Top Hit name	RT	EstConc	Units	Response	--Internal Standard--		
					#	RT	Resp Conc
