

Data Path : Z:\VOASRV\HPCHEM1\MSVOA X\DATA\VX121818\
 Data File : VX006598.D
 Acq On : 18 Dec 2018 15:25
 Operator : JC/MD
 Sample : J6413-02
 Misc : 5.0mL/MSVOA X/WATER
 ALS Vial : 13 Sample Multiplier: 1

Instrument :
 MSVOA_X
 ClientSampled :
 MW-2R

Quant Time: Dec 19 05:59:43 2018
 Quant Method : Z:\VOASRV\HPCHEM1\MSVOA_X\METHOD\82X121818W.M
 Quant Title : SW846 8260
 QLast Update : Tue Dec 18 13:23:17 2018
 Response via : Initial Calibration

Internal Standards	R.T.	QIon	Response	Conc	Units	Dev(Min)
1) Pentafluorobenzene	5.66	168	715544	50.00	ug/l	0.00
34) 1,4-Difluorobenzene	6.86	114	1110518	50.00	ug/l	0.00
63) Chlorobenzene-d5	10.11	117	1005310	50.00	ug/l	0.00
72) 1,4-Dichlorobenzene-d4	12.08	152	485638	50.00	ug/l	0.00

System Monitoring Compounds

33) 1,2-Dichloroethane-d4	6.07	65	379021	49.15	ug/l	0.00
Spiked Amount	50.000		Recovery	=	98.30%	
35) Dibromofluoromethane	5.50	113	330436	47.05	ug/l	0.00
Spiked Amount	50.000		Recovery	=	94.10%	
50) Toluene-d8	8.71	98	1309191	49.45	ug/l	0.00
Spiked Amount	50.000		Recovery	=	98.90%	
62) 4-Bromofluorobenzene	11.13	95	478587	49.36	ug/l	0.00
Spiked Amount	50.000		Recovery	=	98.72%	

Target Compounds

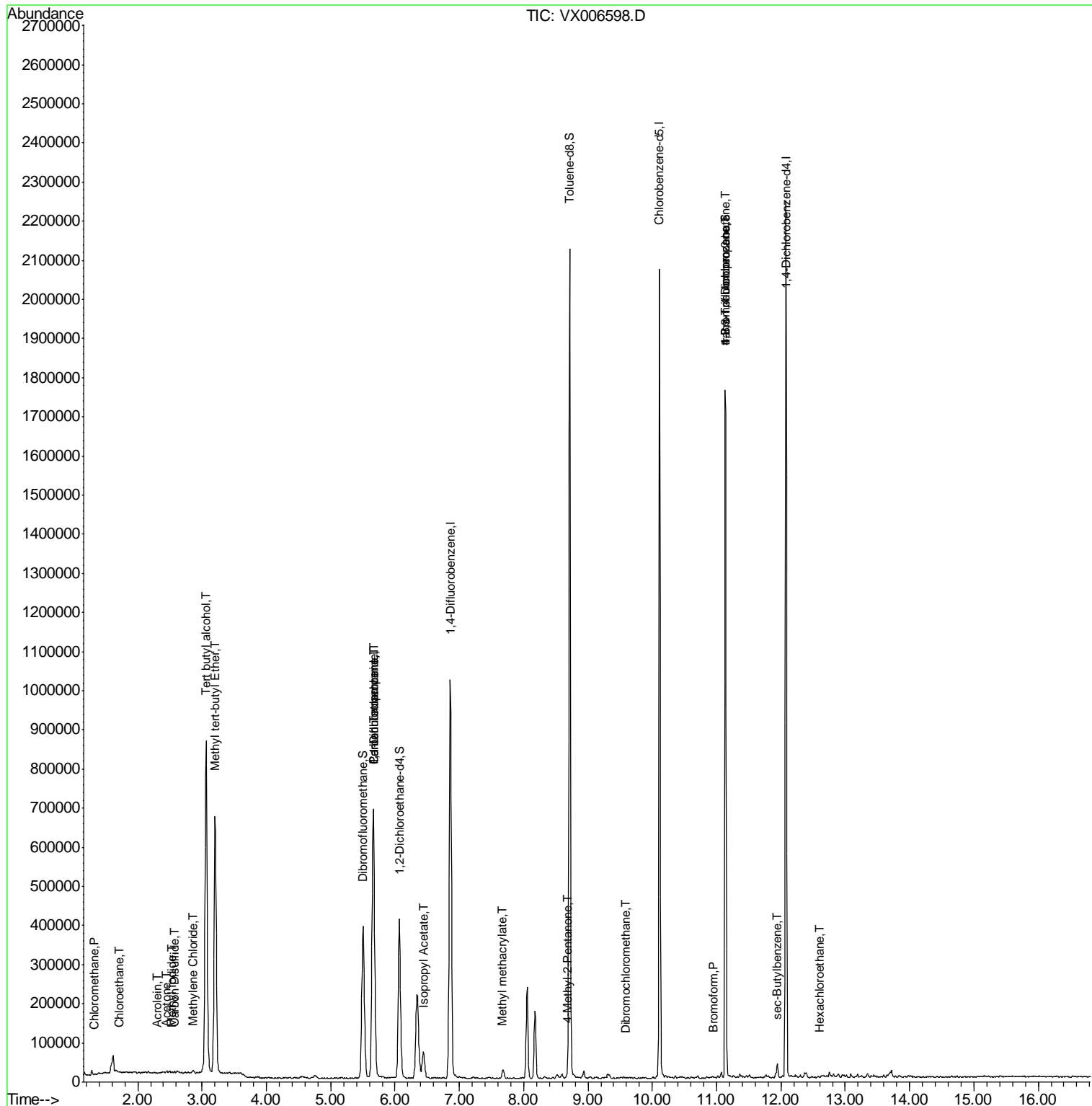
					Qvalue	
3) Chloromethane	1.33	50	1506	0.214	ug/l #	65
5) Bromomethane	1.65	94	1188	Below Cal		96
6) Chloroethane	1.71	64	1246	0.244	ug/l #	42
10) Methyl Iodide	2.53	142	2213	0.229	ug/l	91
11) Tert butyl alcohol	3.06	59	1069199	621.242	ug/l	100
13) Acrolein	2.29	56	339	0.292	ug/l #	13
16) Acetone	2.45	43	4284	1.209	ug/l	94
17) Carbon Disulfide	2.57	76	3861	0.228	ug/l #	92
19) Methyl tert-butyl Ether	3.20	73	761422	35.884	ug/l	97
20) Methylene Chloride	2.87	84	2620	0.358	ug/l #	69
28) Bromochloromethane	5.04	49	258	Below Cal	#	33
36) 1,1-Dichloropropene	5.66	75	46262	5.030	ug/l #	50
38) Carbon Tetrachloride	5.66	117	67478	7.549	ug/l #	16
43) Isopropyl Acetate	6.45	43	23021	1.580	ug/l #	6
48) Methyl methacrylate	7.68	41	6240	0.842	ug/l #	35
49) 1,4-Dioxane	7.74	88	49	Below Cal	#	1
51) 4-Methyl-2-Pentanone	8.68	43	2477	0.267	ug/l	96
60) Dibromochloromethane	9.58	129	227	2.352	ug/l #	53
71) Bromoform	10.95	173	122	4.478	ug/l #	28
76) 1,2,3-Trichloropropane	11.13	75	222413	26.131	ug/l #	37
81) trans-1,4-Dichloro-2-buten	11.13	75	222413	72.881	ug/l #	15
85) sec-Butylbenzene	11.94	105	17313	0.516	ug/l	97
90) Hexachloroethane	12.60	117	329	3.360	ug/l #	27

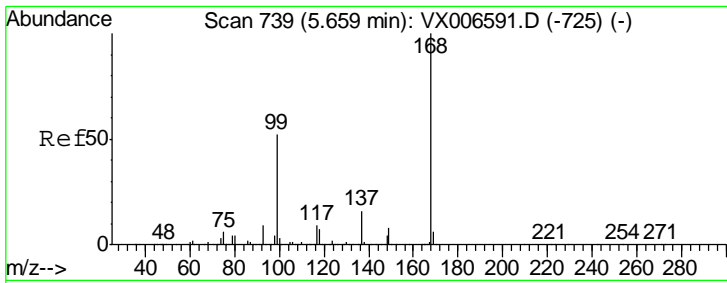
(#) = qualifier out of range (m) = manual integration (+) = signals summed

Data Path : Z:\VOASRV\HPCHEM1\MSVOA X\DATA\VX121818\
 Data File : VX006598.D
 Acq On : 18 Dec 2018 15:25
 Operator : JC/MD
 Sample : J6413-02
 Misc : 5.0mL/MSVOA X/WATER
 ALS Vial : 13 Sample Multiplier: 1

Instrument :
 MSVOA_X
 Client Sampled :
 MW-2R

Quant Time: Dec 19 05:59:43 2018
 Quant Method : Z:\VOASRV\HPCHEM1\MSVOA_X\METHOD\82X121818W.M
 Quant Title : SW846 8260
 QLast Update : Tue Dec 18 13:23:17 2018
 Response via : Initial Calibration

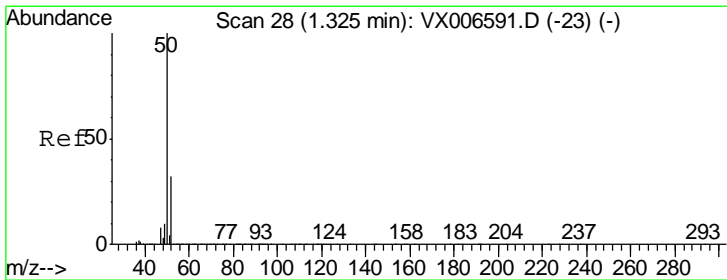
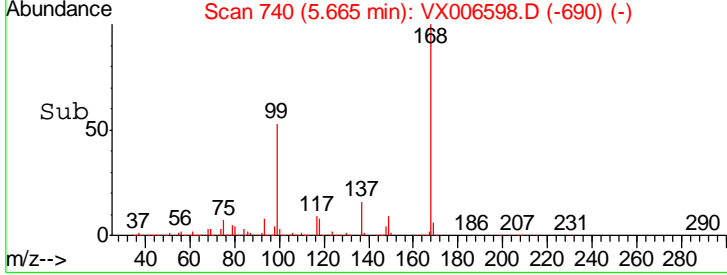
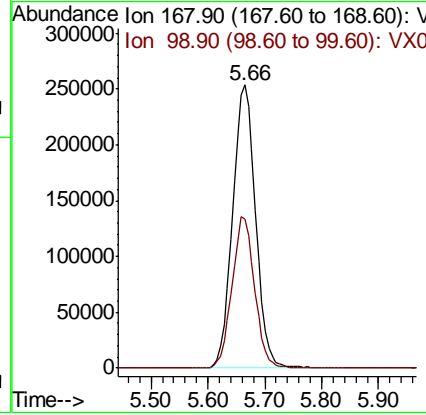
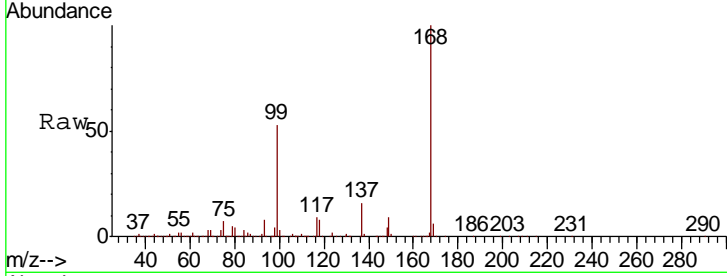




#1
 Pentafluorobenzene
 Concen: 50.000 ug/l
 RT: 5.66 min Scan# 740
 Delta R.T. 0.01 min
 Lab File: VX006598.D
 Acq: 18 Dec 2018 15:25

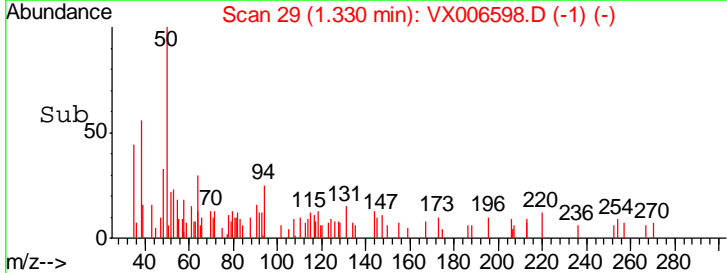
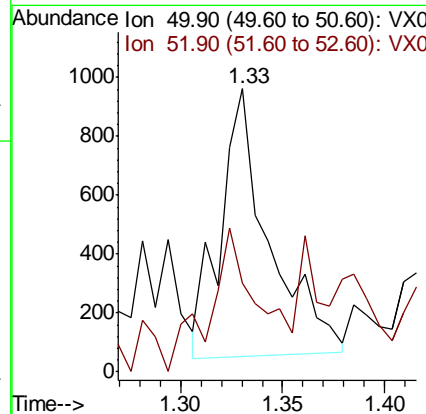
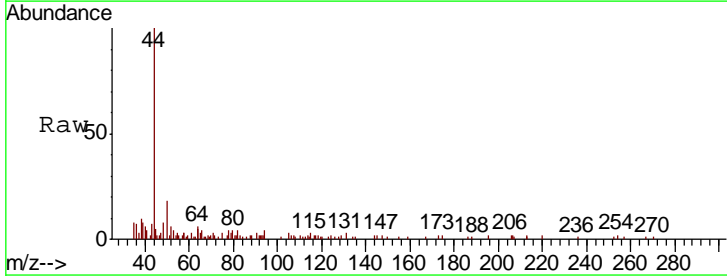
Instrument : MSVOA_X
 ClientSampled : MW-2R

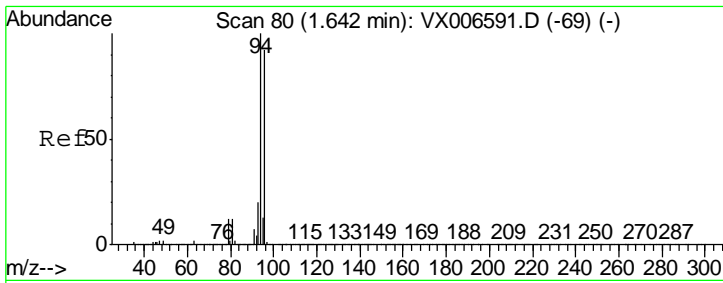
Tgt Ion	Resp	Lower	Upper
168	100		
99	52.6	37.8	56.8



#3
 Chloromethane
 Concen: 0.214 ug/l
 RT: 1.33 min Scan# 29
 Delta R.T. 0.01 min
 Lab File: VX006598.D
 Acq: 18 Dec 2018 15:25

Tgt Ion	Resp	Lower	Upper
50	100		
52	12.1	25.2	37.8

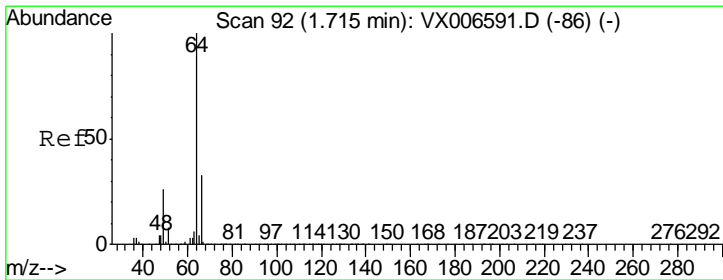
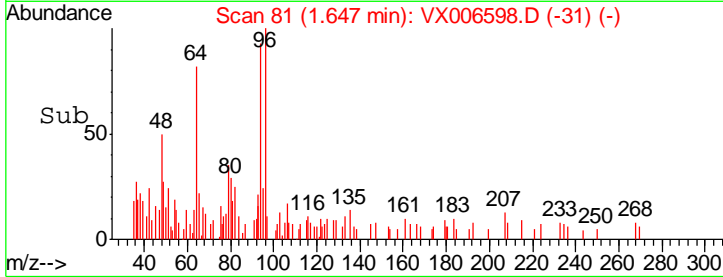
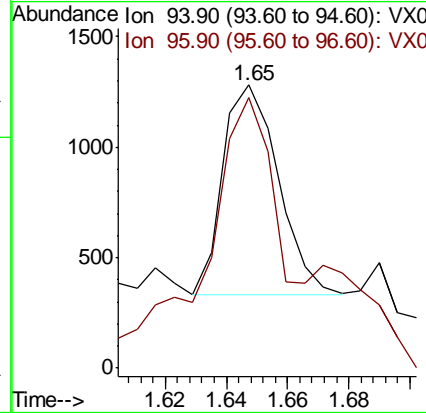
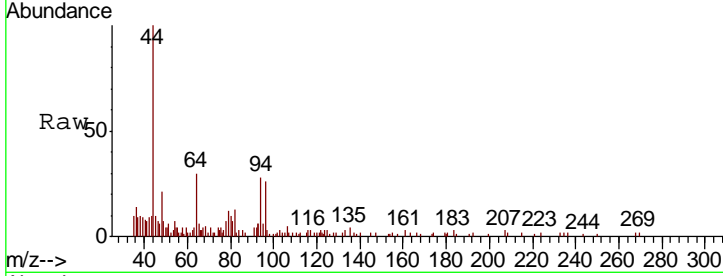




#5
 Bromomethane
 Concen: Below Cal
 RT: 1.65 min Scan# 81
 Delta R.T. 0.01 min
 Lab File: VX006598.D
 Acq: 18 Dec 2018 15:25

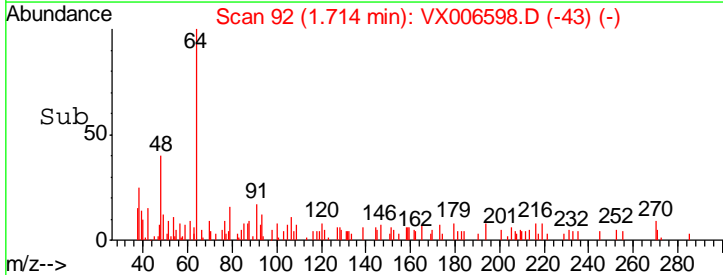
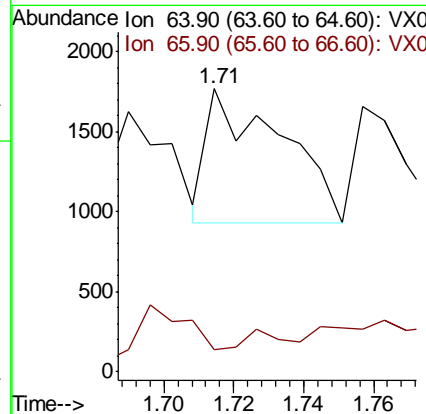
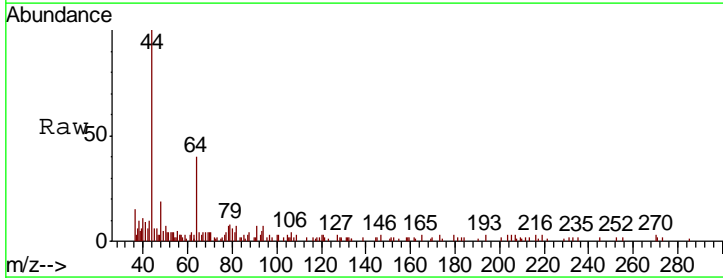
Instrument :
 MSVOA_X
 ClientSampled :
 MW-2R

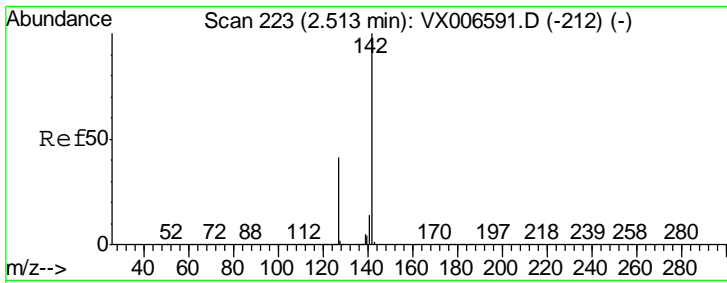
Tgt Ion: 94 Resp: 1188
 Ion Ratio Lower Upper
 94 100
 96 97.4 74.5 111.7



#6
 Chloroethane
 Concen: 0.244 ug/l
 RT: 1.71 min Scan# 92
 Delta R.T. -0.00 min
 Lab File: VX006598.D
 Acq: 18 Dec 2018 15:25

Tgt Ion: 64 Resp: 1246
 Ion Ratio Lower Upper
 64 100
 66 0.0 25.9 38.9#

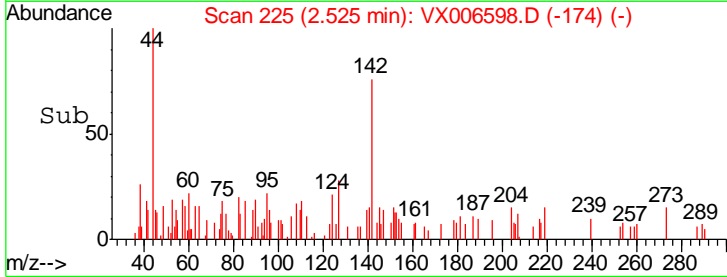
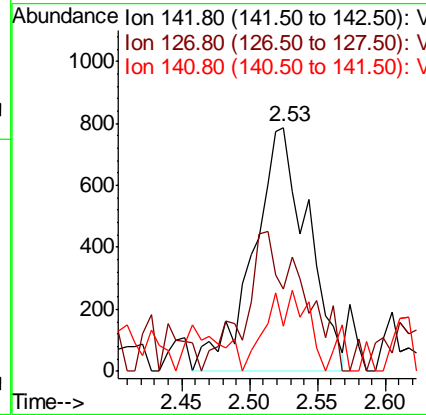
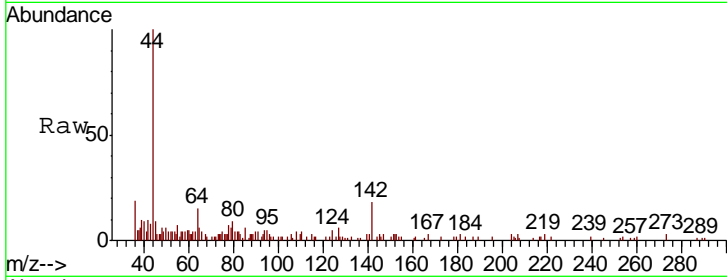




#10
 Methyl Iodide
 Concen: 0.229 ug/l
 RT: 2.53 min Scan# 225
 Delta R.T. 0.01 min
 Lab File: VX006598.D
 Acq: 18 Dec 2018 15:25

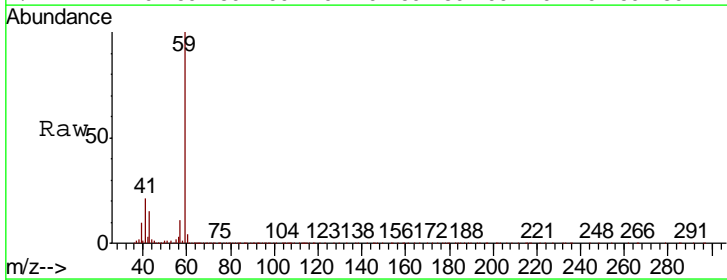
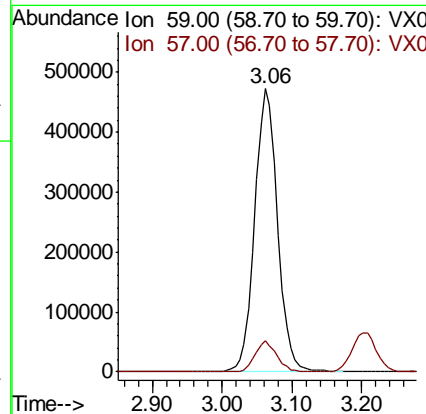
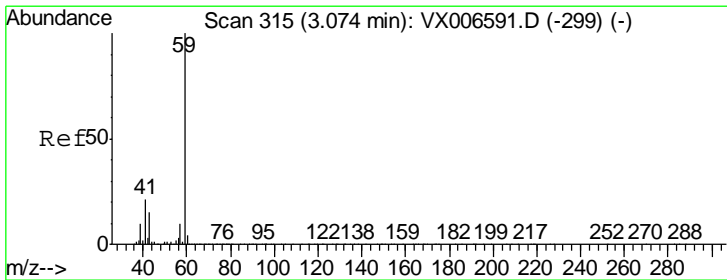
Instrument :
 MSVOA_X
ClientSampled :
 MW-2R

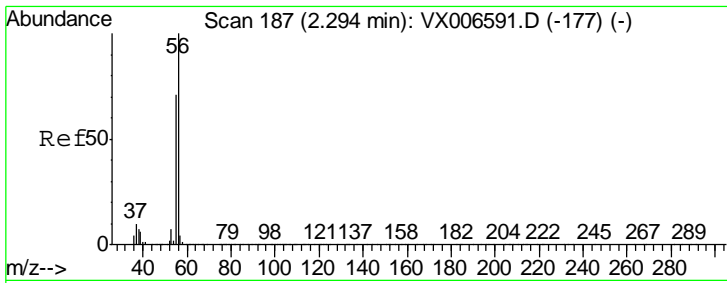
Tgt Ion	Resp	Lower	Upper
142	100		
127	37.3	34.8	52.2
141	12.0	11.4	17.2



#11
 Tert butyl alcohol
 Concen: 621.242 ug/l
 RT: 3.06 min Scan# 313
 Delta R.T. -0.01 min
 Lab File: VX006598.D
 Acq: 18 Dec 2018 15:25

Tgt Ion	Resp	Lower	Upper
59	100		
57	10.3	8.2	12.2

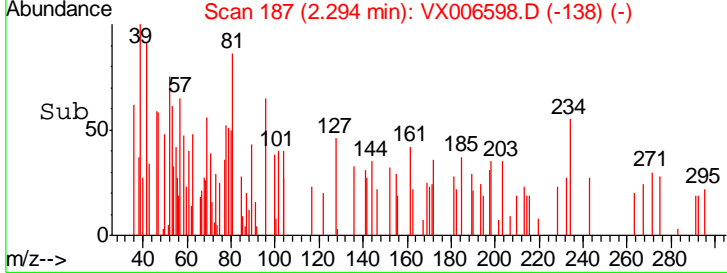
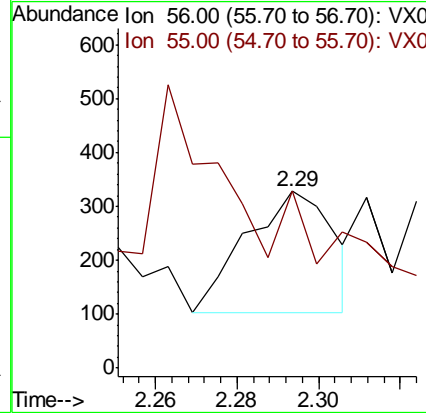
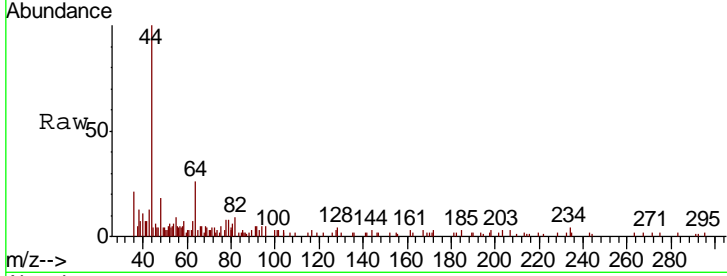




#13
 Acrolein
 Concen: 0.292 ug/l
 RT: 2.29 min Scan# 187
 Delta R.T. -0.00 min
 Lab File: VX006598.D
 Acq: 18 Dec 2018 15:25

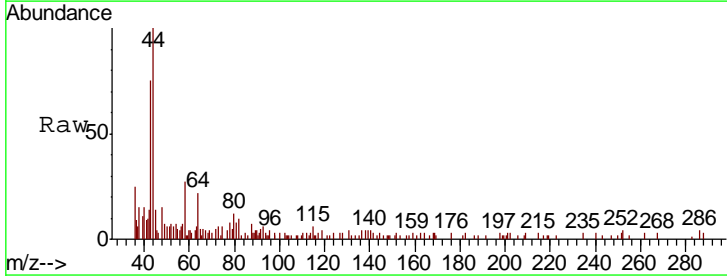
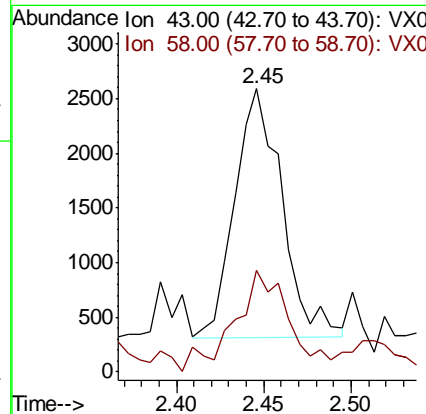
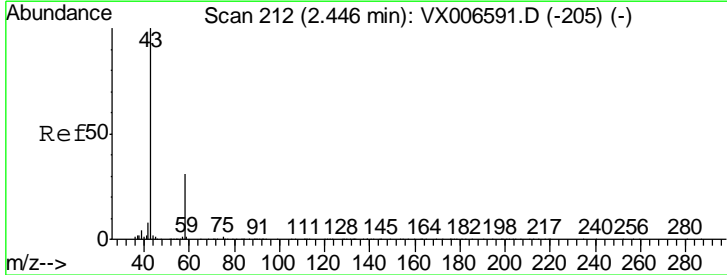
Instrument :
 MSVOA_X
 ClientSampled :
 MW-2R

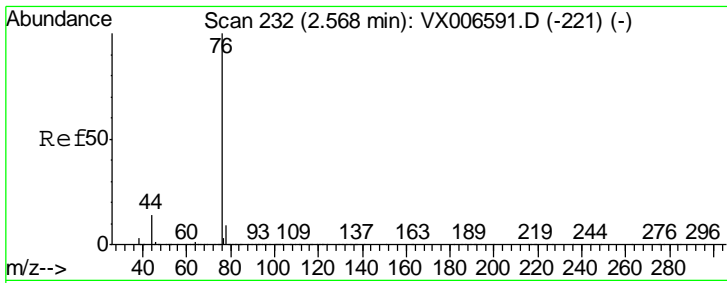
Tgt Ion: 56 Resp: 339
 Ion Ratio Lower Upper
 56 100
 55 0.0 57.8 86.6#



#16
 Acetone
 Concen: 1.209 ug/l
 RT: 2.45 min Scan# 212
 Delta R.T. -0.00 min
 Lab File: VX006598.D
 Acq: 18 Dec 2018 15:25

Tgt Ion: 43 Resp: 4284
 Ion Ratio Lower Upper
 43 100
 58 33.1 24.0 36.0

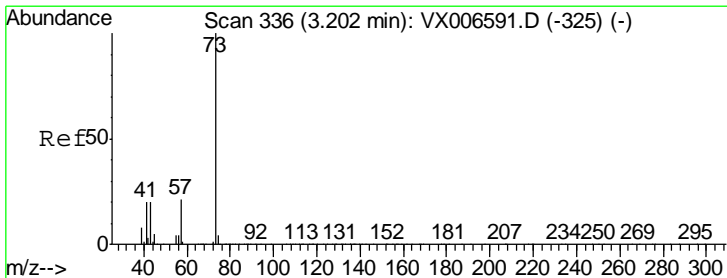
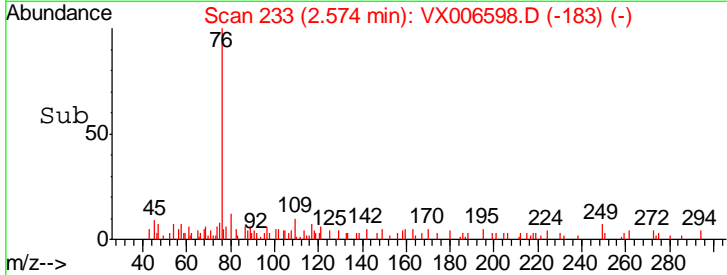
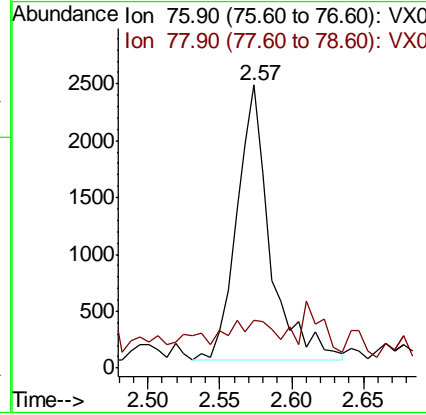
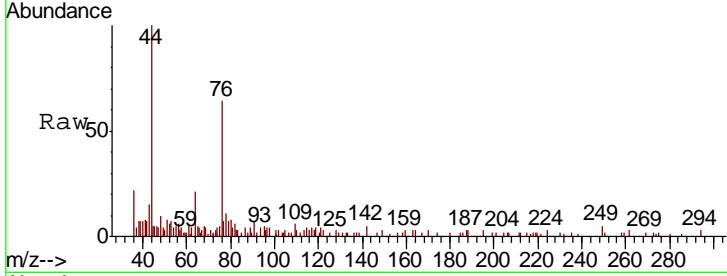




#17
 Carbon Disulfide
 Concen: 0.228 ug/l
 RT: 2.57 min Scan# 233
 Delta R.T. 0.01 min
 Lab File: VX006598.D
 Acq: 18 Dec 2018 15:25

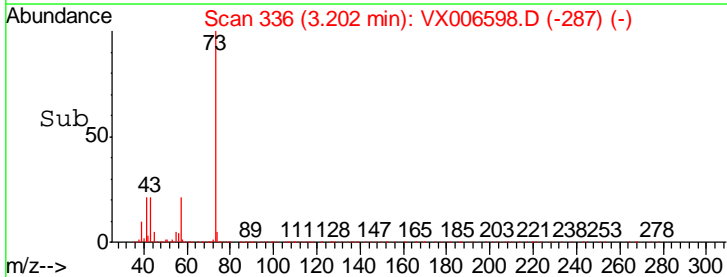
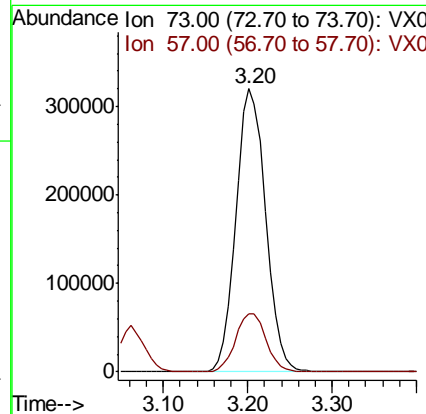
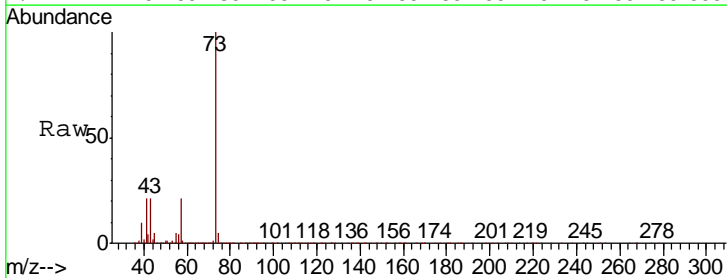
Instrument :
 MSVOA_X
 ClientSampled :
 MW-2R

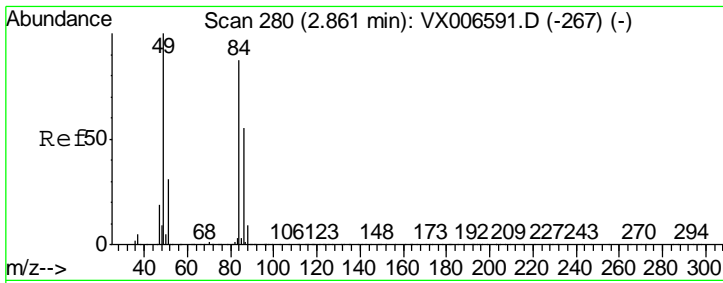
Tgt Ion	Resp	Lower	Upper
76	3861		
76	100		
78	11.7	7.1	10.7#



#19
 Methyl tert-butyl Ether
 Concen: 35.884 ug/l
 RT: 3.20 min Scan# 336
 Delta R.T. -0.00 min
 Lab File: VX006598.D
 Acq: 18 Dec 2018 15:25

Tgt Ion	Resp	Lower	Upper
73	761422		
73	100		
57	20.5	17.5	26.3

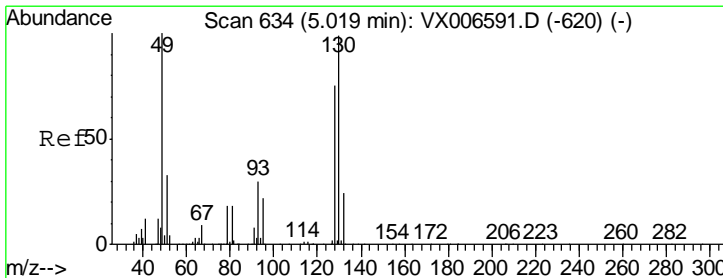
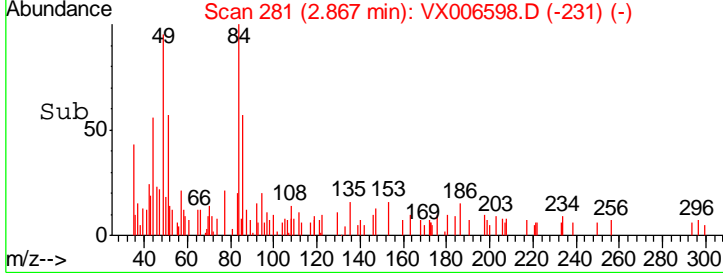
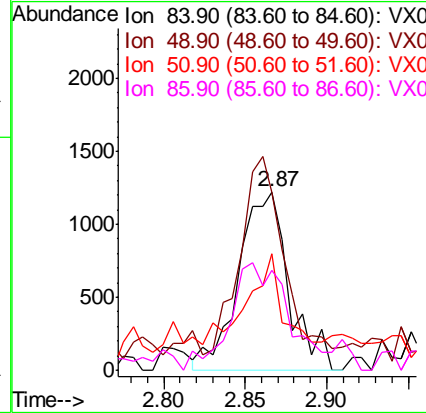
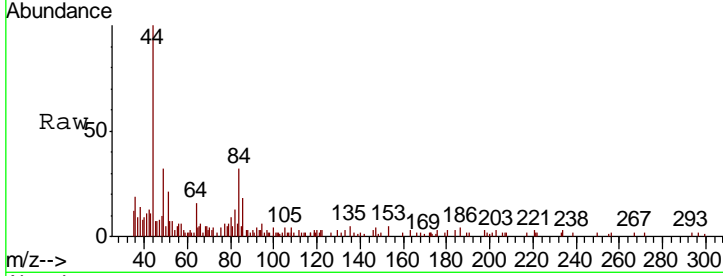




#20
 Methylene Chloride
 Concen: 0.358 ug/l
 RT: 2.87 min Scan# 281
 Delta R.T. 0.01 min
 Lab File: VX006598.D
 Acq: 18 Dec 2018 15:25

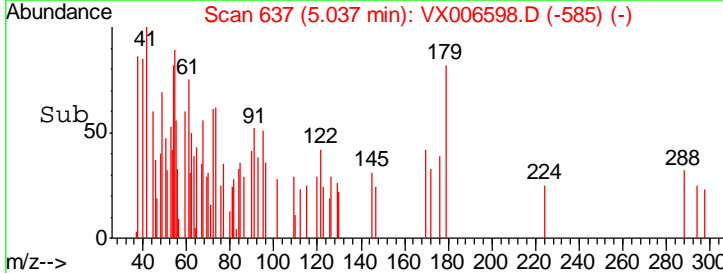
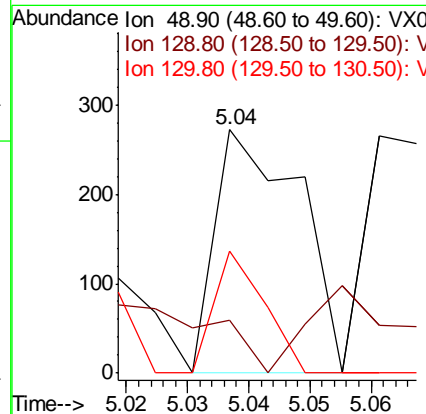
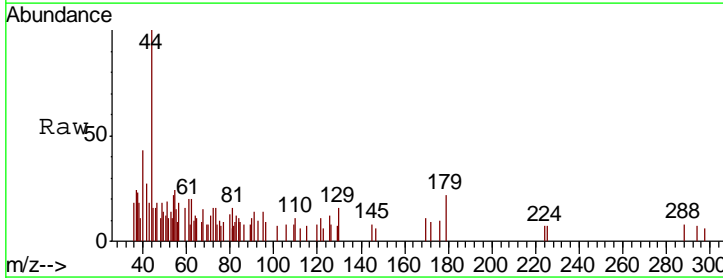
Instrument :
 MSVOA_X
 ClientSampled :
 MW-2R

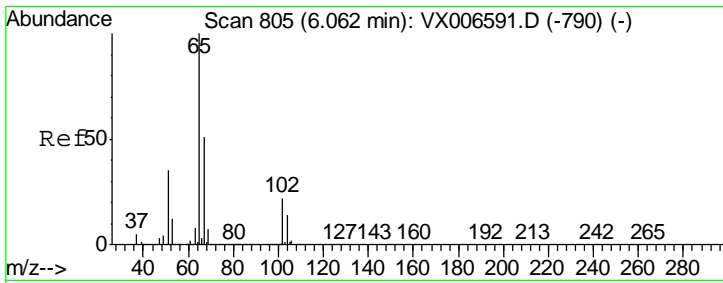
Tgt Ion	Resp	Lower	Upper
84	100		
49	86.7	102.2	153.4#
51	47.1	31.1	46.7#
86	39.8	53.7	80.5#



#28
 Bromochloromethane
 Concen: Below Cal
 RT: 5.04 min Scan# 637
 Delta R.T. 0.02 min
 Lab File: VX006598.D
 Acq: 18 Dec 2018 15:25

Tgt Ion	Resp	Lower	Upper
49	100		
129	0.0	0.0	5.0
130	29.8	78.3	117.5#

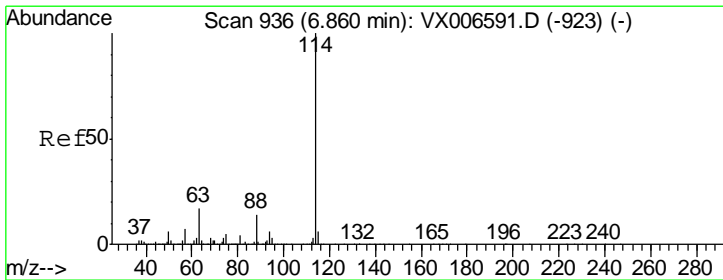
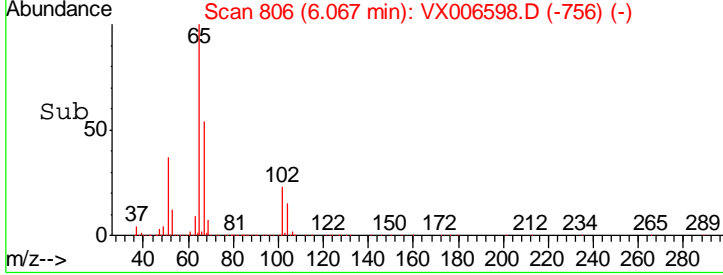
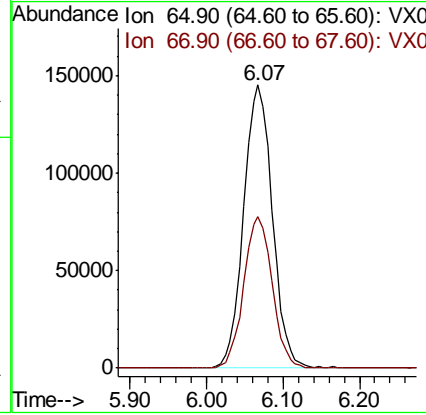
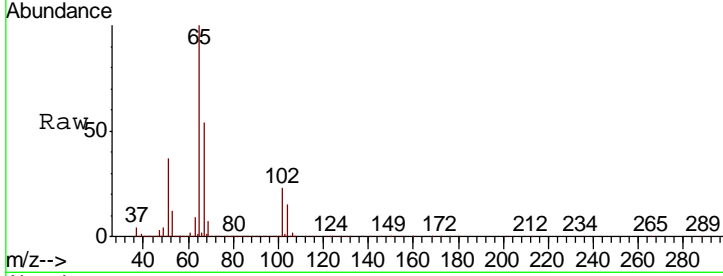




#33
 1,2-Dichloroethane-d4
 Concen: 49.148 ug/l
 RT: 6.07 min Scan# 806
 Delta R.T. 0.01 min
 Lab File: VX006598.D
 Acq: 18 Dec 2018 15:25

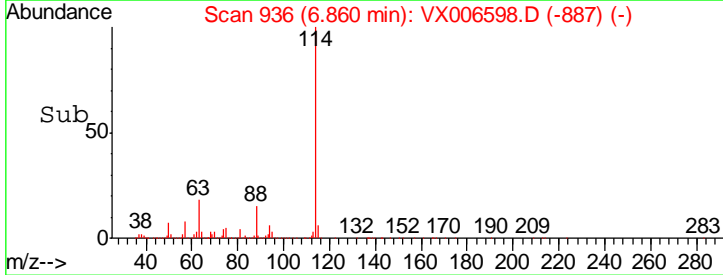
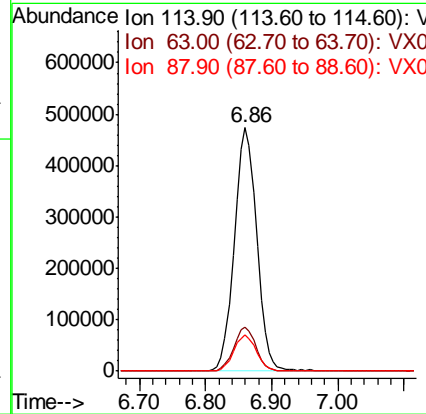
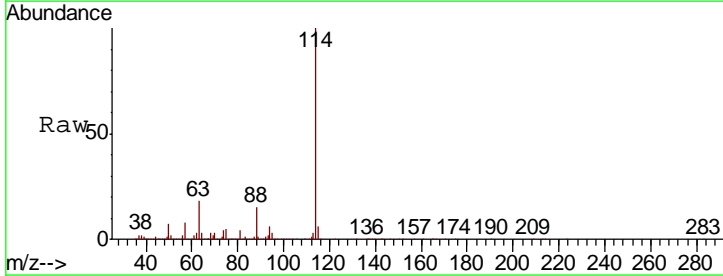
Instrument : MSVOA_X
 ClientSampled : VX006598.D
 MW-2R

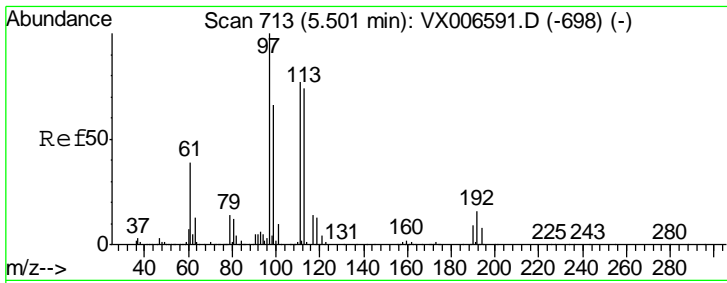
Tgt Ion	Resp	Lower	Upper
65	100		
67	52.9	0.0	107.2



#34
 1,4-Difluorobenzene
 Concen: 50.000 ug/l
 RT: 6.86 min Scan# 936
 Delta R.T. -0.00 min
 Lab File: VX006598.D
 Acq: 18 Dec 2018 15:25

Tgt Ion	Resp	Lower	Upper
114	100		
63	17.8	0.0	36.6
88	15.1	0.0	29.0

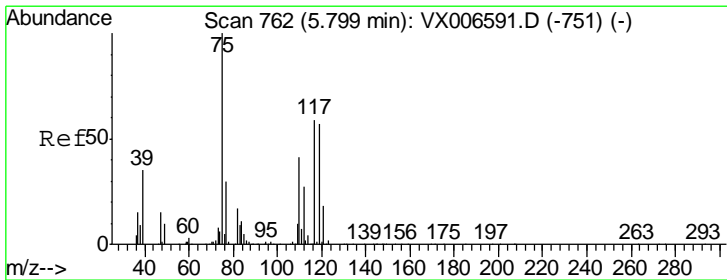
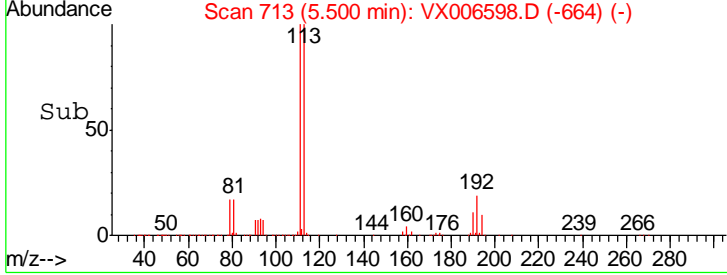
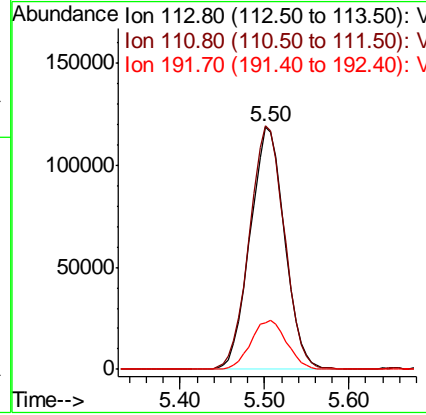
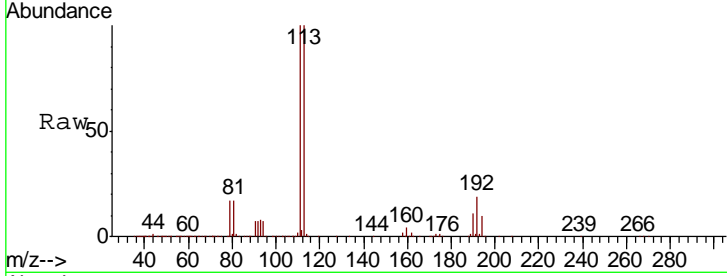




#35
 Dibromofluoromethane
 Concen: 47.053 ug/l
 RT: 5.50 min Scan# 713
 Delta R.T. -0.00 min
 Lab File: VX006598.D
 Acq: 18 Dec 2018 15:25

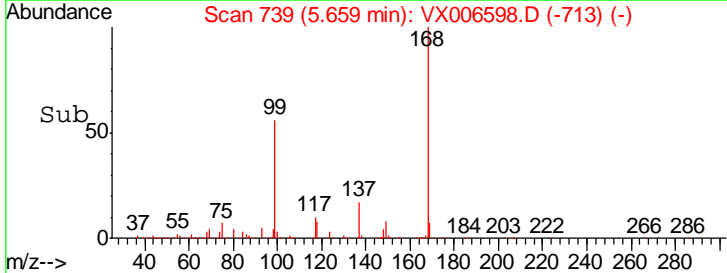
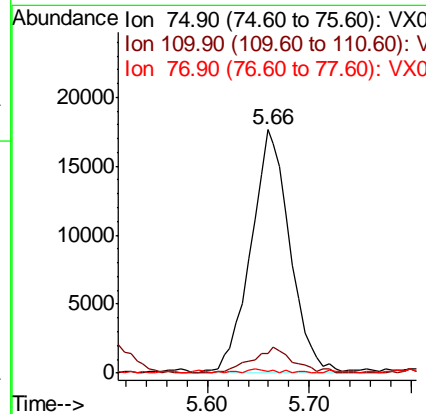
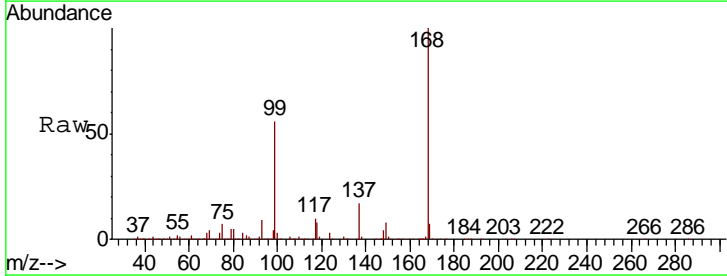
Instrument : MSVOA_X
 ClientSampleId : MW-2R

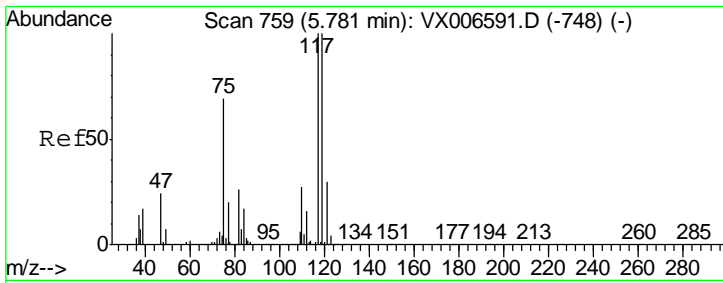
Tgt Ion	Resp	Lower	Upper
113	330436		
111	102.1	81.1	121.7
192	21.0	18.2	27.2



#36
 1,1-Dichloropropene
 Concen: 5.030 ug/l
 RT: 5.66 min Scan# 739
 Delta R.T. -0.14 min
 Lab File: VX006598.D
 Acq: 18 Dec 2018 15:25

Tgt Ion	Resp	Lower	Upper
75	46262		
110	11.4	20.4	61.3#
77	1.1	24.9	37.3#

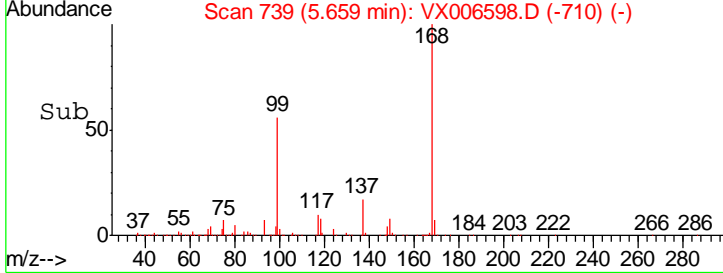
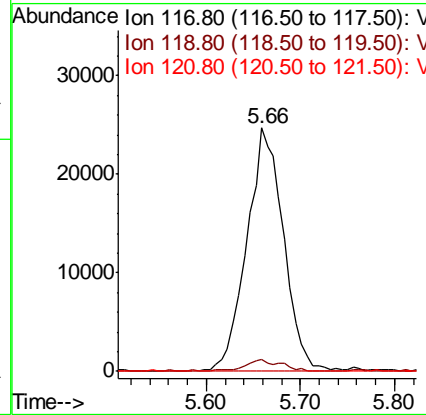
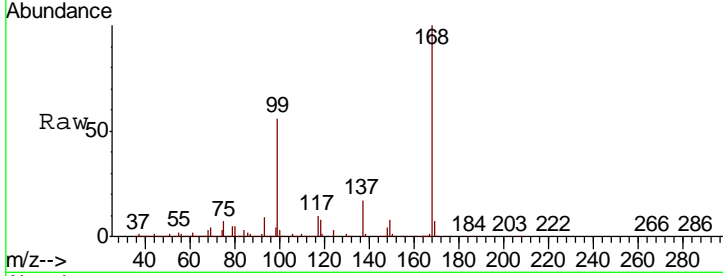




#38
 Carbon Tetrachloride
 Concen: 7.549 ug/l
 RT: 5.66 min Scan# 739
 Delta R.T. -0.12 min
 Lab File: VX006598.D
 Acq: 18 Dec 2018 15:25

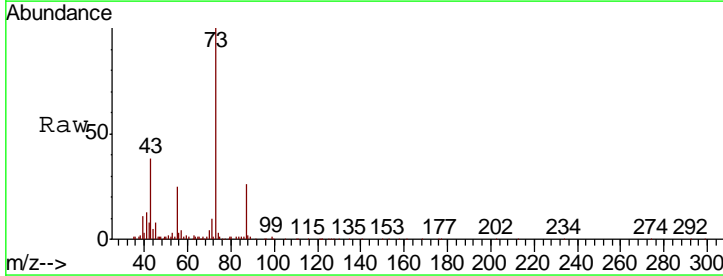
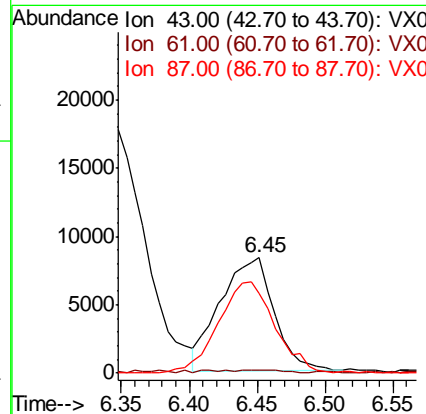
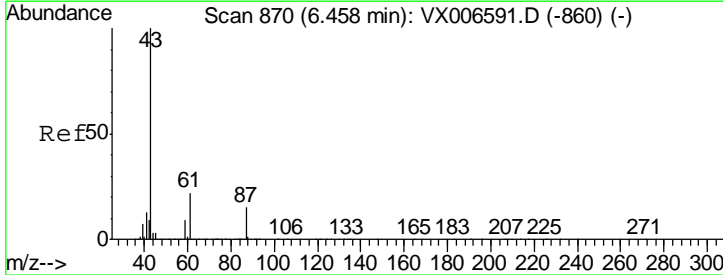
Instrument :
 MSVOA_X
 ClientSampled :
 MW-2R

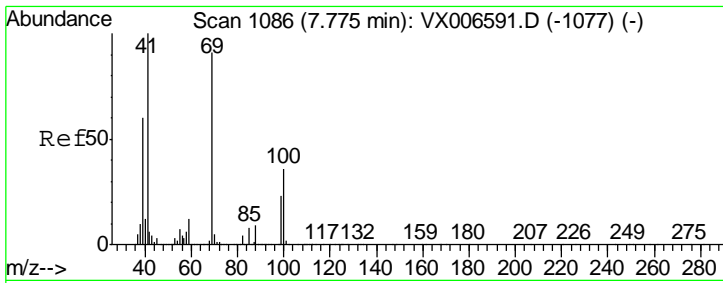
Tgt Ion	Resp	Lower	Upper
117	100		
119	5.0	75.8	113.8#
121	0.0	24.6	37.0#



#43
 Isopropyl Acetate
 Concen: 1.580 ug/l
 RT: 6.45 min Scan# 869
 Delta R.T. -0.01 min
 Lab File: VX006598.D
 Acq: 18 Dec 2018 15:25

Tgt Ion	Resp	Lower	Upper
43	100		
61	0.7	16.8	25.2#
87	83.8	11.9	17.9#

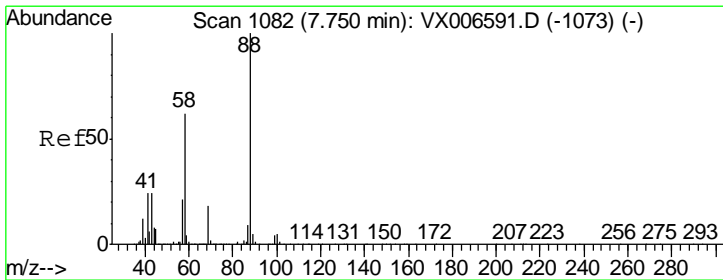
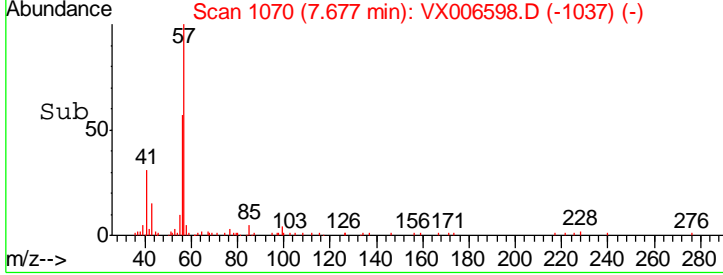
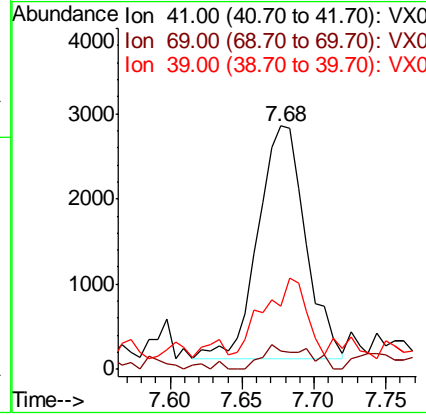
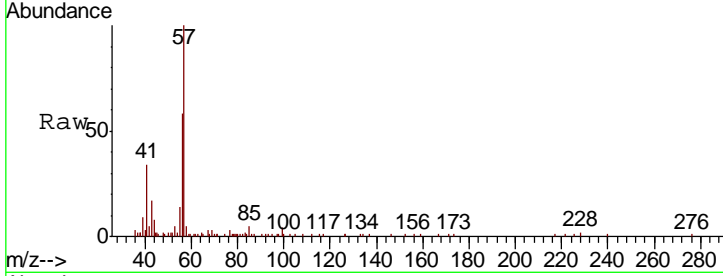




#48
 Methyl methacrylate
 Concen: 0.842 ug/l
 RT: 7.68 min Scan# 1070
 Delta R.T. -0.10 min
 Lab File: VX006598.D
 Acq: 18 Dec 2018 15:25

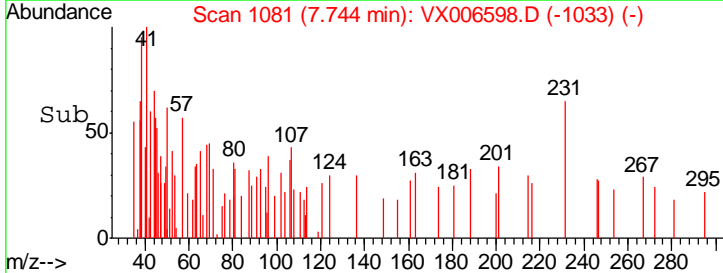
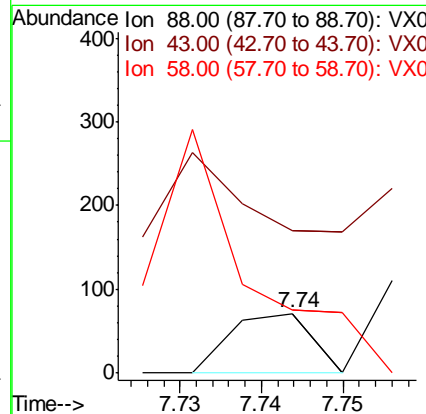
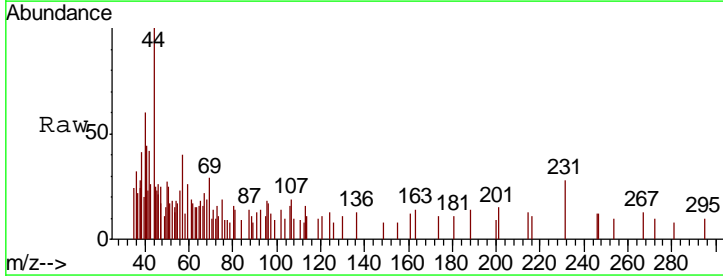
Instrument :
 MSVOA_X
 ClientSampled :
 MW-2R

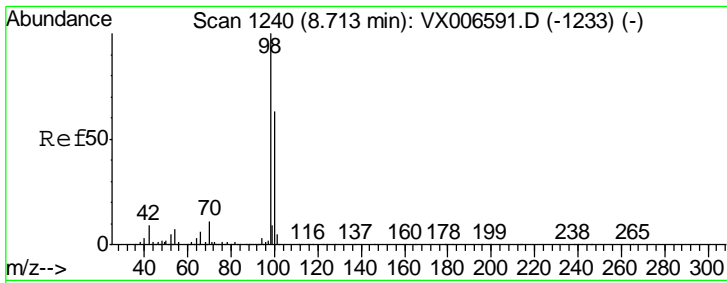
Tgt Ion	Resp	Lower	Upper
41	100		
69	9.7	70.3	105.5#
39	29.8	45.3	67.9#



#49
 1,4-Dioxane
 Concen: Below Cal
 RT: 7.74 min Scan# 1081
 Delta R.T. -0.01 min
 Lab File: VX006598.D
 Acq: 18 Dec 2018 15:25

Tgt Ion	Resp	Lower	Upper
88	100		
43	0.0	23.2	34.8#
58	483.7	51.4	77.0#

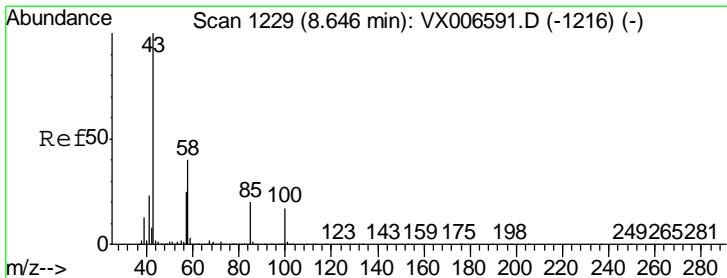
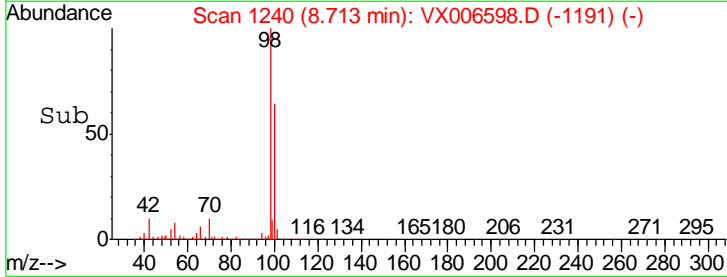
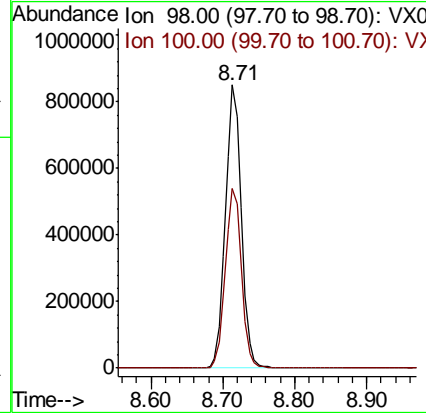
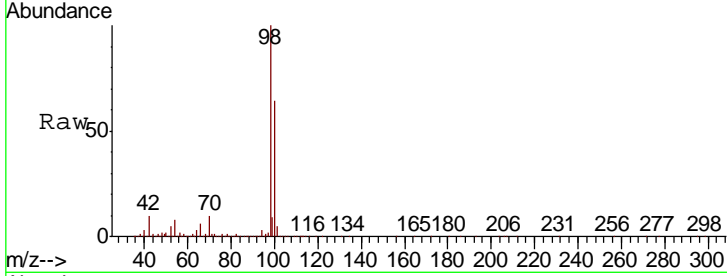




#50
 Toluene-d8
 Concen: 49.448 ug/l
 RT: 8.71 min Scan# 1240
 Delta R.T. -0.00 min
 Lab File: VX006598.D
 Acq: 18 Dec 2018 15:25

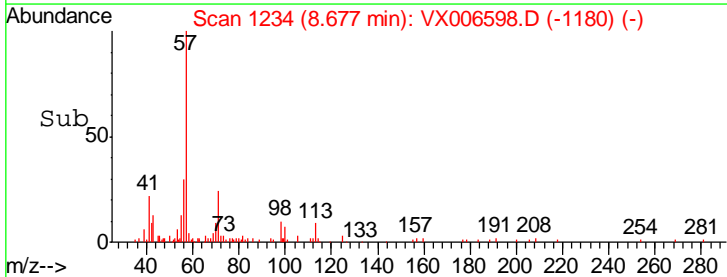
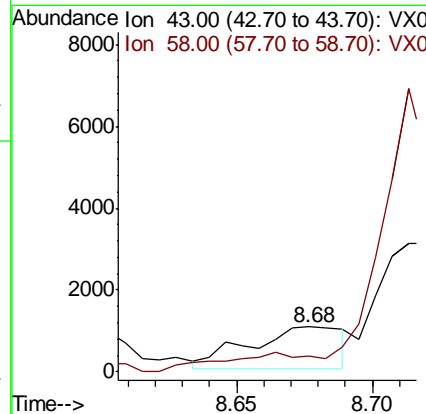
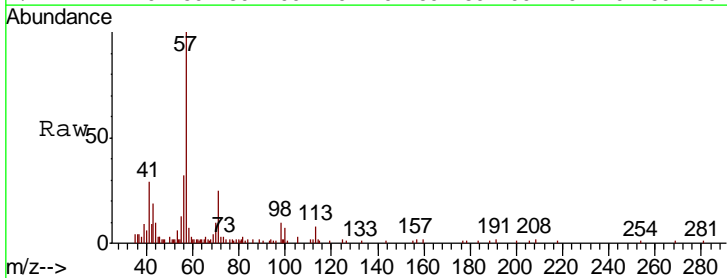
Instrument :
 MSVOA_X
 ClientSampled :
 MW-2R

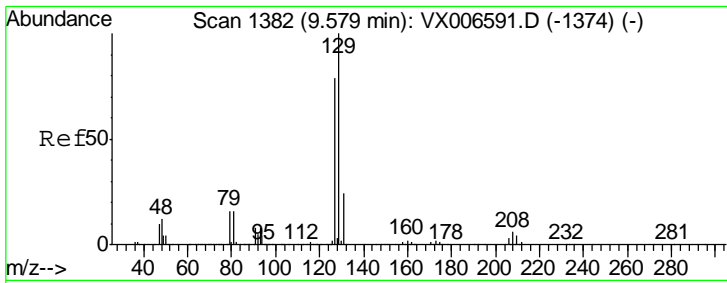
Tgt Ion: 98 Resp: 1309191
 Ion Ratio Lower Upper
 98 100
 100 64.5 52.2 78.2



#51
 4-Methyl-2-Pentanone
 Concen: 0.267 ug/l
 RT: 8.68 min Scan# 1234
 Delta R.T. 0.03 min
 Lab File: VX006598.D
 Acq: 18 Dec 2018 15:25

Tgt Ion: 43 Resp: 2477
 Ion Ratio Lower Upper
 43 100
 58 36.5 31.3 46.9

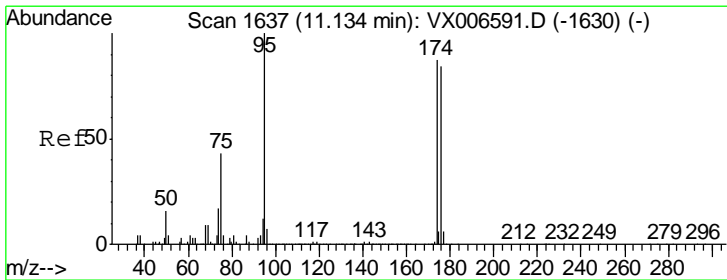
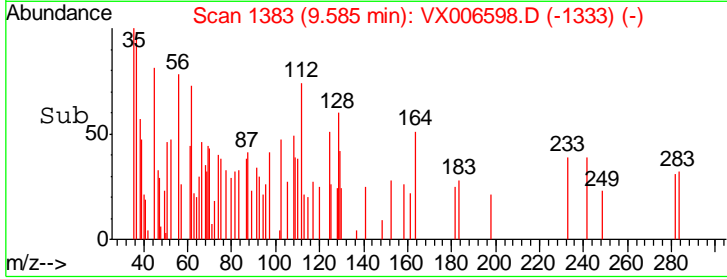
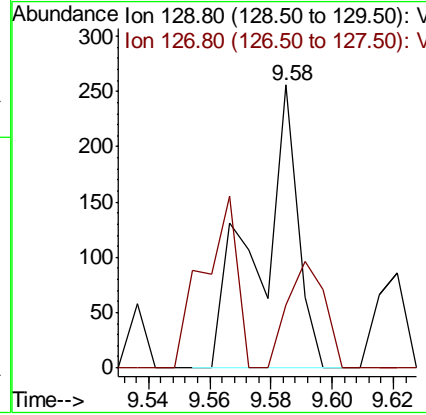
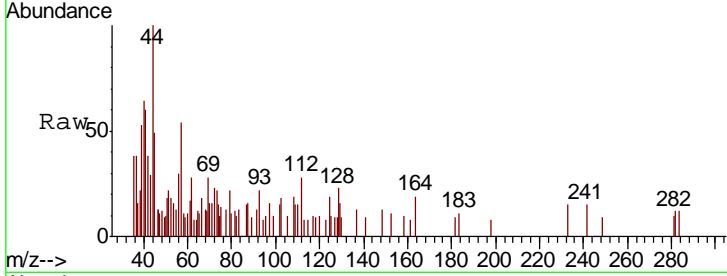




#60
 Dibromochloromethane
 Concen: 2.352 ug/l
 RT: 9.58 min Scan# 1383
 Delta R.T. 0.01 min
 Lab File: VX006598.D
 Acq: 18 Dec 2018 15:25

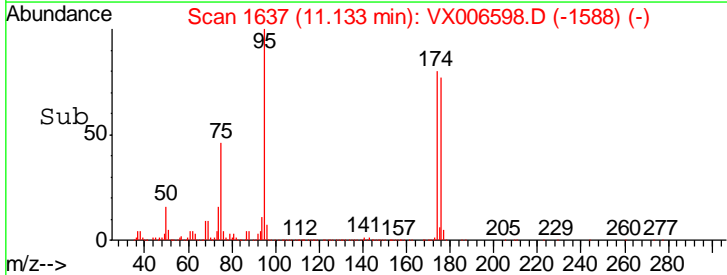
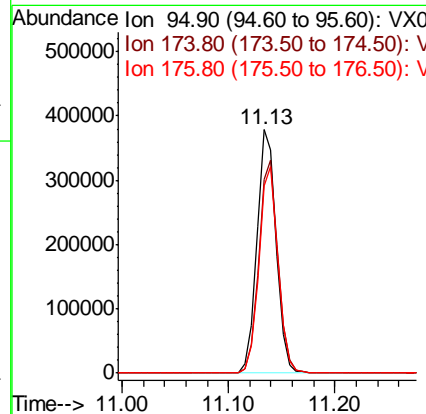
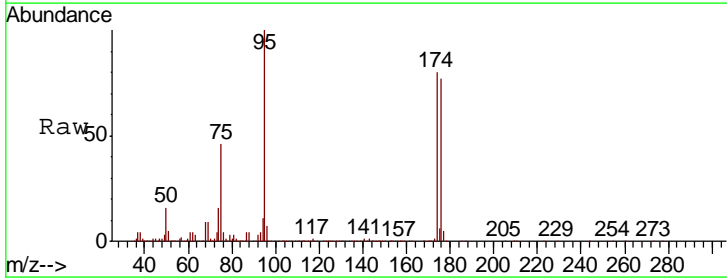
Instrument :
 MSVOA_X
 ClientSampled :
 MW-2R

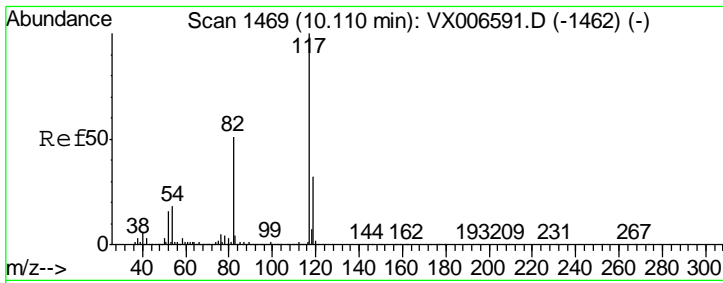
Tgt Ion: 129 Resp: 227
 Ion Ratio Lower Upper
 129 100
 127 36.1 38.6 115.8#



#62
 4-Bromofluorobenzene
 Concen: 49.356 ug/l
 RT: 11.13 min Scan# 1637
 Delta R.T. -0.00 min
 Lab File: VX006598.D
 Acq: 18 Dec 2018 15:25

Tgt Ion: 95 Resp: 478587
 Ion Ratio Lower Upper
 95 100
 174 87.1 0.0 187.0
 176 84.4 0.0 181.8

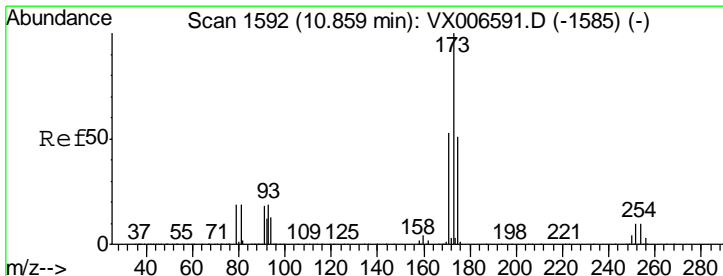
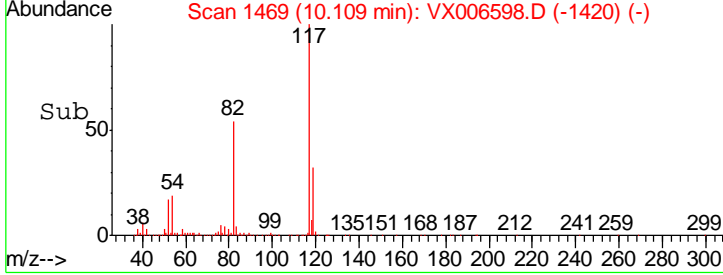
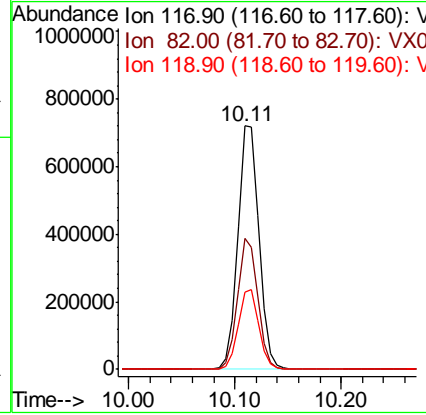
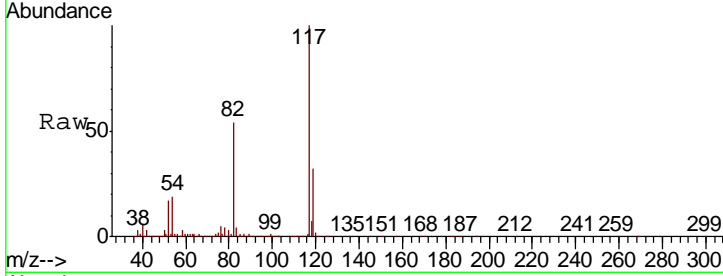




#63
 Chlorobenzene-d5
 Concen: 50.000 ug/l
 RT: 10.11 min Scan# 1469
 Delta R.T. -0.00 min
 Lab File: VX006598.D
 Acq: 18 Dec 2018 15:25

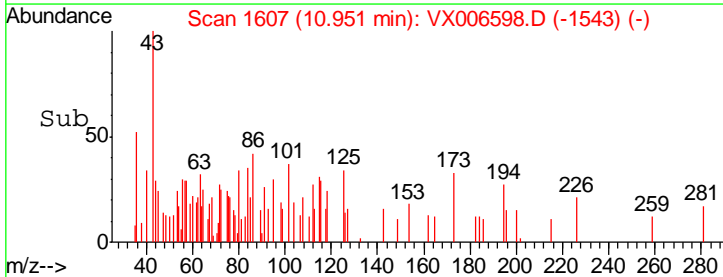
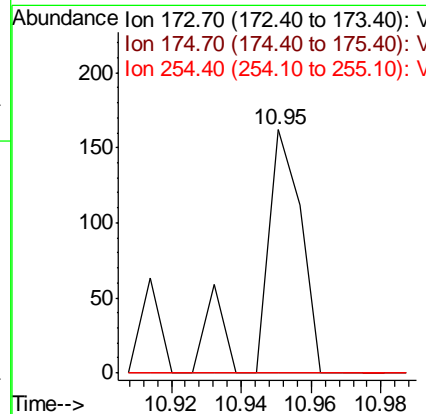
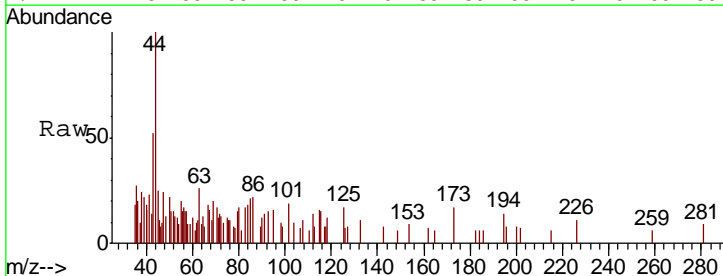
Instrument : MSVOA_X
 Client Sampled : MW-2R

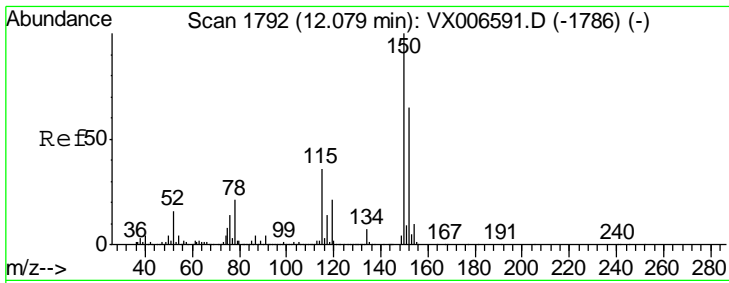
Tgt Ion	Resp	Lower	Upper
117	1005310		
82	53.9	39.6	59.4
119	31.8	26.3	39.5



#71
 Bromoform
 Concen: 4.478 ug/l
 RT: 10.95 min Scan# 1607
 Delta R.T. 0.09 min
 Lab File: VX006598.D
 Acq: 18 Dec 2018 15:25

Tgt Ion	Resp	Lower	Upper
173	122		
175	0.0	24.6	73.8#
254	0.0	0.2	0.2#

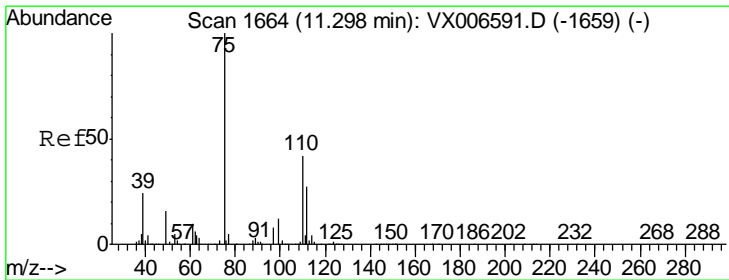
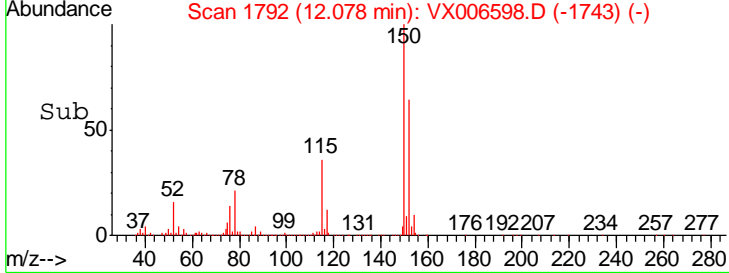
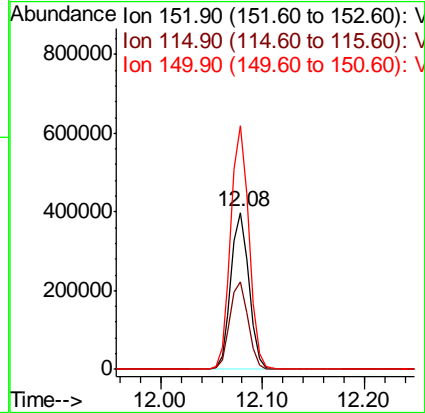
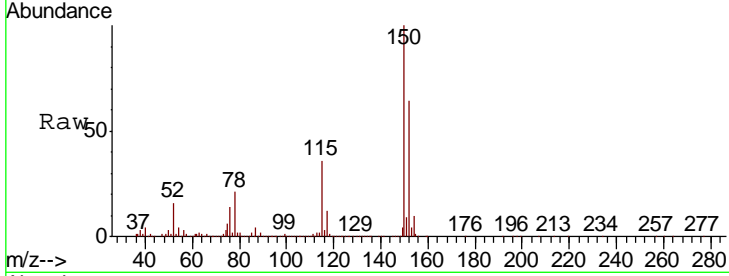




#72
 1,4-Dichlorobenzene-d4
 Concen: 50.000 ug/l
 RT: 12.08 min Scan# 1792
 Delta R.T. -0.00 min
 Lab File: VX006598.D
 Acq: 18 Dec 2018 15:25

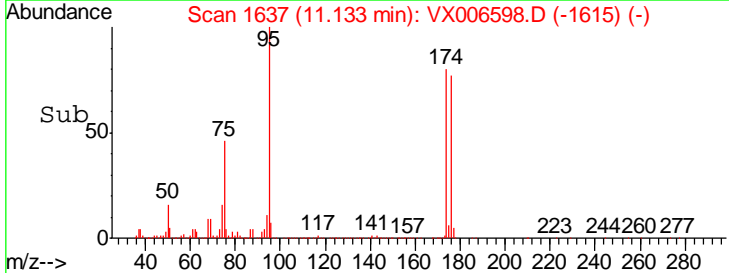
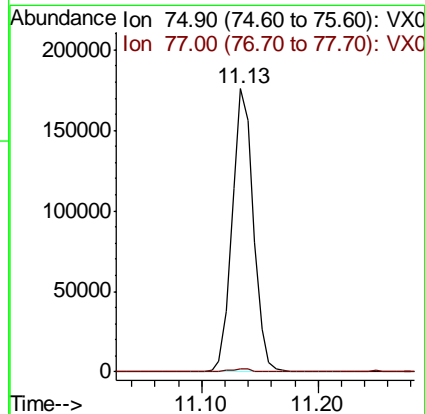
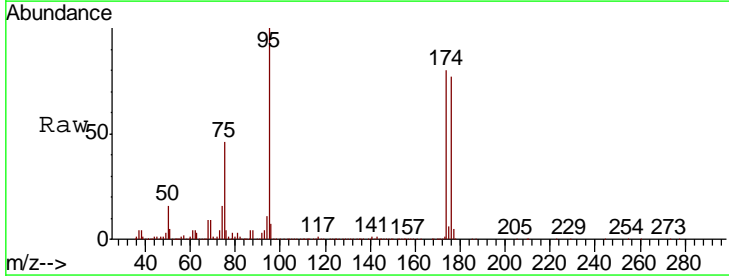
Instrument :
 MSVOA_X
 ClientSampled :
 MW-2R

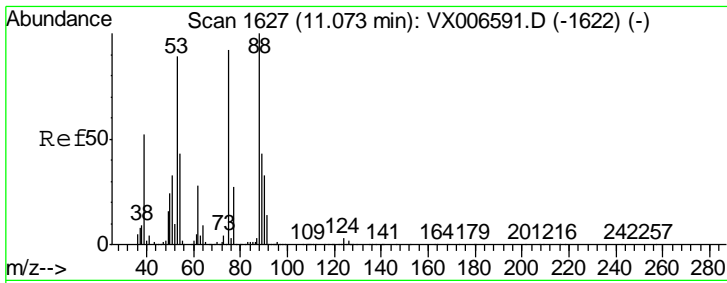
Tgt Ion	Resp	Lower	Upper
152	100		
115	56.7	39.0	116.9
150	156.8	0.0	345.8



#76
 1,2,3-Trichloropropane
 Concen: 26.131 ug/l
 RT: 11.13 min Scan# 1637
 Delta R.T. -0.16 min
 Lab File: VX006598.D
 Acq: 18 Dec 2018 15:25

Tgt Ion	Resp	Lower	Upper
75	100		
77	1.2	19.9	59.7#

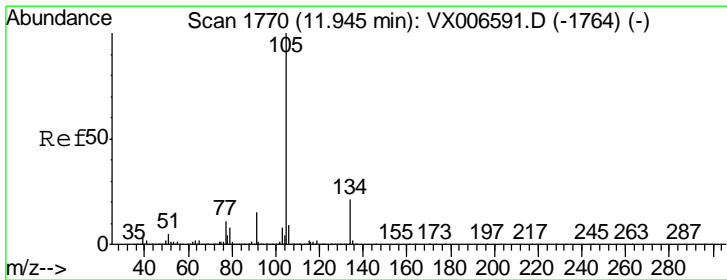
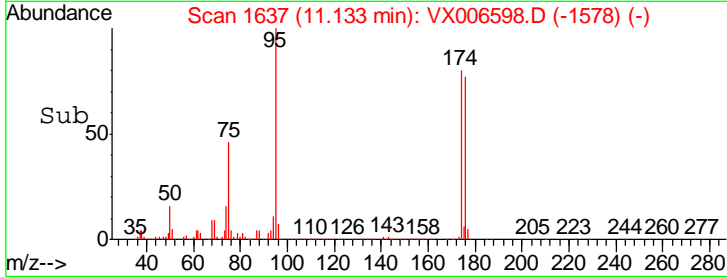
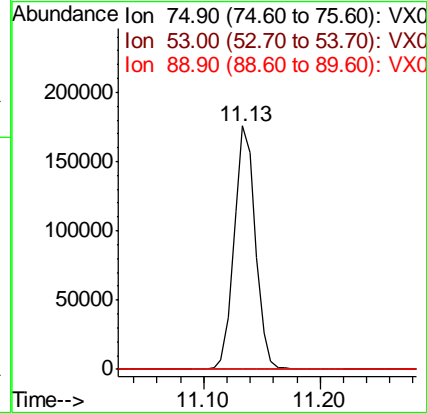
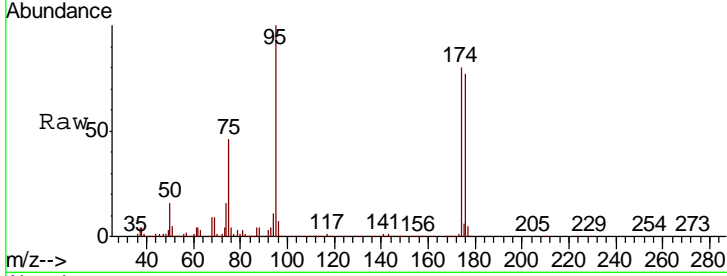




#81
 trans-1,4-Dichloro-2-butene
 Concen: 72.881 ug/l
 RT: 11.13 min Scan# 1637
 Delta R.T. 0.06 min
 Lab File: VX006598.D
 Acq: 18 Dec 2018 15:25

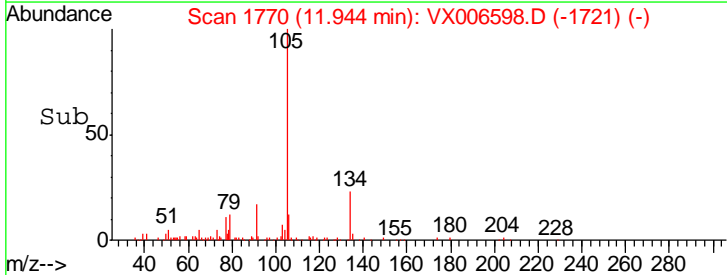
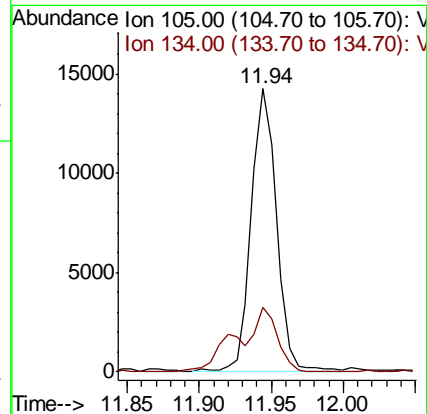
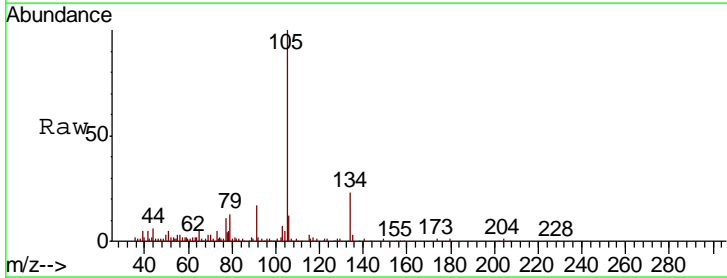
Instrument :
 MSVOA_X
 Client Sampled :
 MW-2R

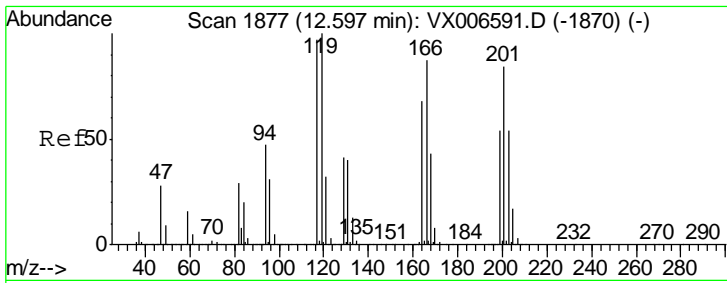
Tgt Ion	Resp	Lower	Upper
75	100		
53	0.2	64.4	96.6#
89	0.0	44.2	66.4#



#85
 sec-Butylbenzene
 Concen: 0.516 ug/l
 RT: 11.94 min Scan# 1770
 Delta R.T. -0.00 min
 Lab File: VX006598.D
 Acq: 18 Dec 2018 15:25

Tgt Ion	Resp	Lower	Upper
105	100		
134	20.3	10.8	32.4





#90
 Hexachloroethane
 Concen: 3.360 ug/l
 RT: 12.60 min Scan# 1878
 Delta R.T. 0.01 min
 Lab File: VX006598.D
 Acq: 18 Dec 2018 15:25

Instrument :
 MSVOA_X
 ClientSampled :
 MW-2R

Tot Ion: 117 Resp: 329
 Ion Ratio Lower Upper
 117 100
 201 21.3 44.7 134.1#

