

Data Path : Z:\VOASRV\HPCHEM1\MSVOA X\DATA\VX121818\
 Data File : VX006626.D
 Acq On : 19 Dec 2018 04:45
 Operator : JC/MD
 Sample : J6449-04
 Misc : 5.0mL/MSVOA X/WATER
 ALS Vial : 43 Sample Multiplier: 1

Instrument :
 MSVOA_X
 ClientSampleId :
 MW-16B_R1

Integration Parameters: RTEINT.P
 Integrator: RTE
 Smoothing : ON Filtering: 5
 Sampling : 1 Min Area: 3 % of largest Peak
 Start Thrs: 0.2 Max Peaks: 100
 Stop Thrs : 0 Peak Location: TOP

If leading or trailing edge < 100 prefer < Baseline drop else tangent >
 Peak separation: 5

Method : Z:\VOASRV\HPCHEM1\MSVOA_X\METHOD\82X121818W.M
 Title : SW846 8260

Signal : TIC

peak #	R.T. min	first scan	max scan	last scan	PK TY	peak height	corr. area	corr. % max.	% of total
1	1.623	66	77	80	rBV2	41429	103844	3.41%	0.637%
2	5.507	700	714	726	rBV	345713	984634	32.31%	6.038%
3	5.665	728	740	754	rVV	613251	1732570	56.85%	10.624%
4	6.067	795	806	819	rBV	379914	983597	32.27%	6.031%
5	6.860	924	936	946	rBV	920062	2171774	71.26%	13.317%
6	8.713	1232	1240	1259	rBV	1944512	3047821	100.00%	18.689%
7	10.109	1460	1469	1485	rBV	1888575	2652918	87.04%	16.268%
8	11.140	1632	1638	1647	rBV	1609007	2076094	68.12%	12.731%
9	12.079	1786	1792	1801	rBV	2096641	2554663	83.82%	15.665%

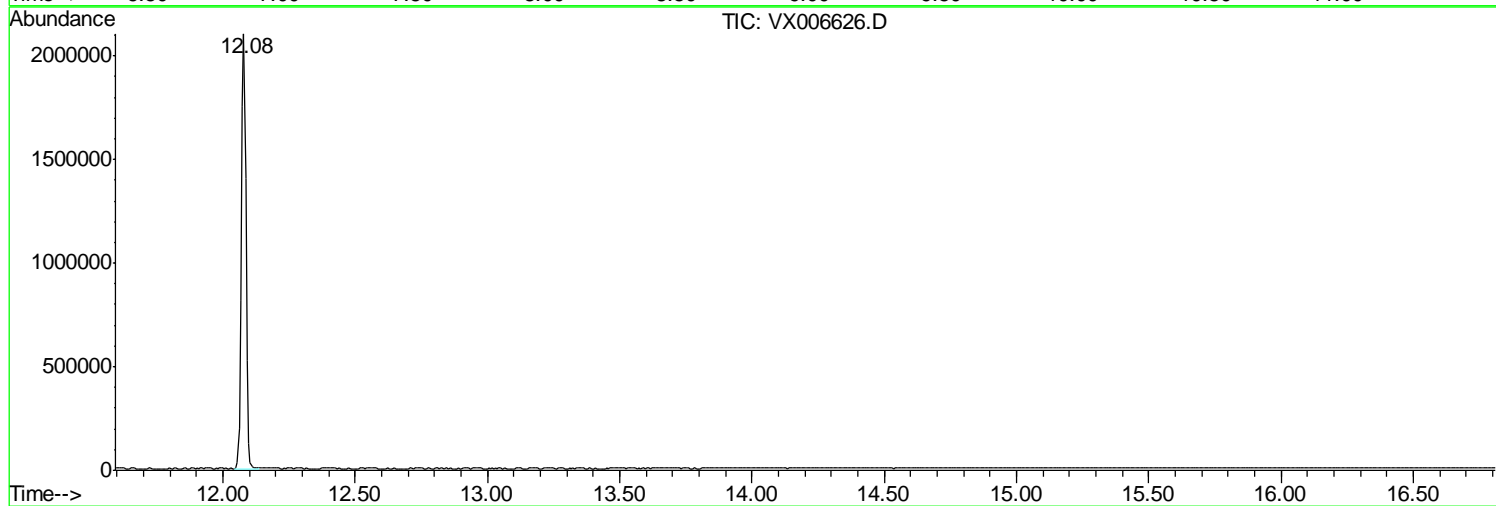
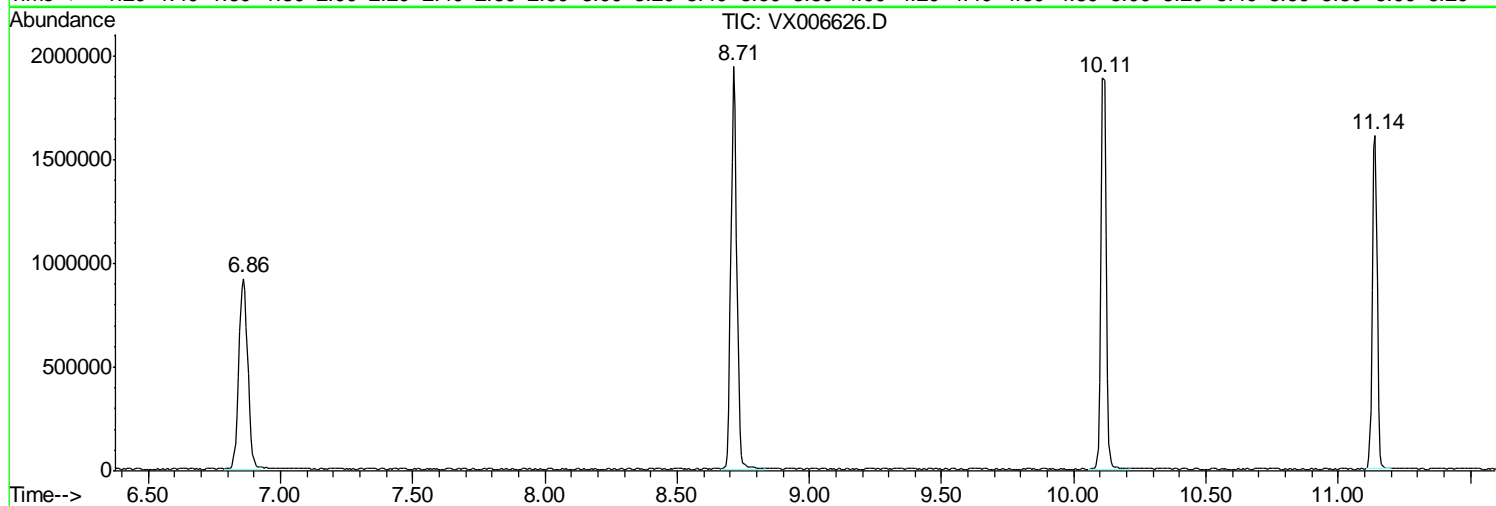
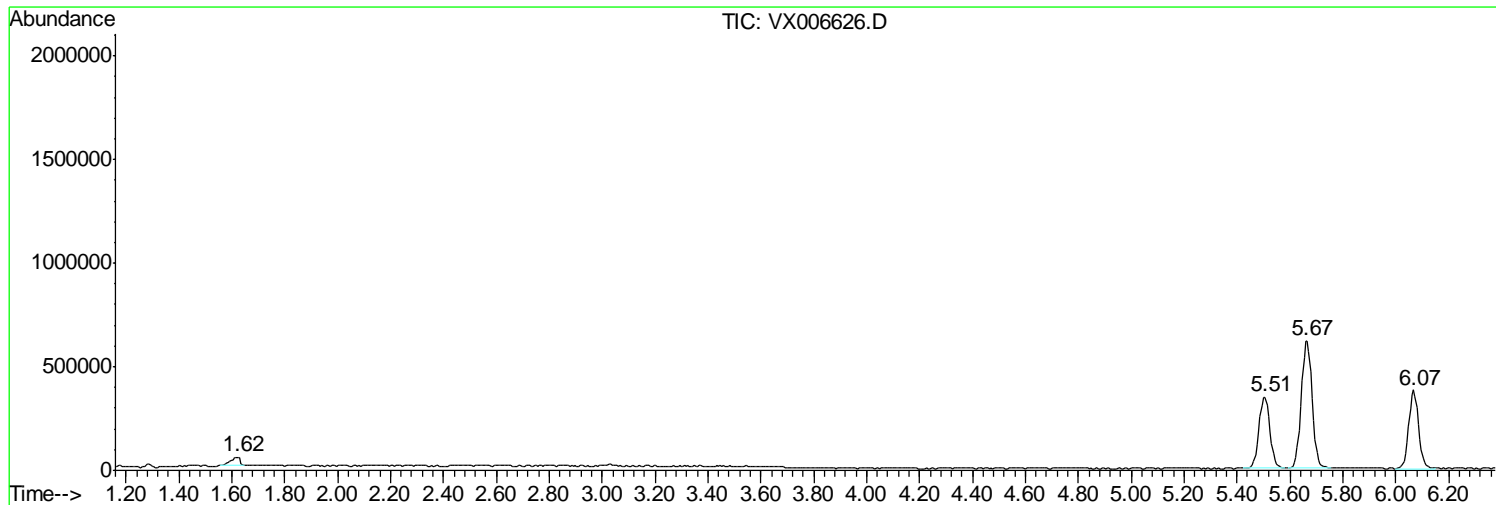
Sum of corrected areas: 16307915

Data Path : Z:\VOASRV\HPCHEM1\MSVOA X\DATA\VX121818\
Data File : VX006626.D
Acq On : 19 Dec 2018 04:45
Operator : JC/MD
Sample : J6449-04
Misc : 5.0mL/MSVOA X/WATER
ALS Vial : 43 Sample Multiplier: 1

Instrument :
MSVOA_X
ClientSampled :
MW-16B_R1

Quant Method : Z:\VOASRV\HPCHEM1\MSVOA_X\METHOD\82X121818W.M
Quant Title : SW846 8260

TIC Library : C:\DATABASE\NIST11.L
TIC Integration Parameters: LSCINT.P



Data Path : Z:\VOASRV\HPCHEM1\MSVOA_X\DATA\VX121818\
Data File : VX006626.D
Acq On : 19 Dec 2018 04:45
Operator : JC/MD
Sample : J6449-04
Misc : 5.0mL/MSVOA_X/WATER
ALS Vial : 43 Sample Multiplier: 1

Instrument :
MSVOA_X
ClientSampleId :
MW-16B_R1

Quant Method : Z:\VOASRV\HPCHEM1\MSVOA_X\METHOD\82X121818W.M
Quant Title : SW846 8260

TIC Library : C:\DATABASE\NIST11.L
TIC Integration Parameters: LSCINT.P

No Library Search Compounds Detected

Data Path : Z:\VOASRV\HPCHEM1\MSVOA_X\DATA\VX121818\
Data File : VX006626.D
Acq On : 19 Dec 2018 04:45
Operator : JC/MD
Sample : J6449-04
Misc : 5.0mL/MSVOA_X/WATER
ALS Vial : 43 Sample Multiplier: 1

Instrument :
MSVOA_X
ClientSampleId :
MW-16B_R1

Quant Method : Z:\VOASRV\HPCHEM1\MSVOA_X\METHOD\82X121818W.M
Quant Title : SW846 8260

TIC Library : C:\DATABASE\NIST11.L
TIC Integration Parameters: LSCINT.P

TIC Top Hit name	RT	EstConc	Units	Response	--Internal Standard--			
					#	RT	Resp	Conc
