

Data Path : Z:\VOASRV\HPCHEM1\MSVOA X\DATA\VX121819\  
 Data File : VX014101.D  
 Acq On : 18 Dec 2019 16:57  
 Operator : JC/SP  
 Sample : K6300-05  
 Misc : 5.0mL/MSVOA X/WATER  
 ALS Vial : 19 Sample Multiplier: 1

Instrument :  
 MSVOA\_X  
 ClientSampleId :  
 SSI-BFD

Quant Time: Dec 19 03:01:09 2019  
 Quant Method : Z:\VOASRV\HPCHEM1\MSVOA\_X\METHOD\82X121319W.M  
 Quant Title : SW846 8260  
 QLast Update : Tue Dec 17 03:01:07 2019  
 Response via : Initial Calibration

Internal Standards	R.T.	QIon	Response	Conc	Units	Dev(Min)
1) Pentafluorobenzene	5.65	168	559625	50.00	ug/l	0.00
34) 1,4-Difluorobenzene	6.85	114	864762	50.00	ug/l	0.00
63) Chlorobenzene-d5	10.11	117	775172	50.00	ug/l	0.00
72) 1,4-Dichlorobenzene-d4	12.07	152	329046	50.00	ug/l	0.00

System Monitoring Compounds

33) 1,2-Dichloroethane-d4	6.05	65	316669	49.93	ug/l	0.00
Spiked Amount	50.000		Recovery	= 99.86%		
35) Dibromofluoromethane	5.49	113	260941	49.64	ug/l	0.00
Spiked Amount	50.000		Recovery	= 99.28%		
50) Toluene-d8	8.71	98	1029753	50.32	ug/l	0.00
Spiked Amount	50.000		Recovery	= 100.64%		
62) 4-Bromofluorobenzene	11.13	95	338947	45.31	ug/l	0.00
Spiked Amount	50.000		Recovery	= 90.62%		

Target Compounds

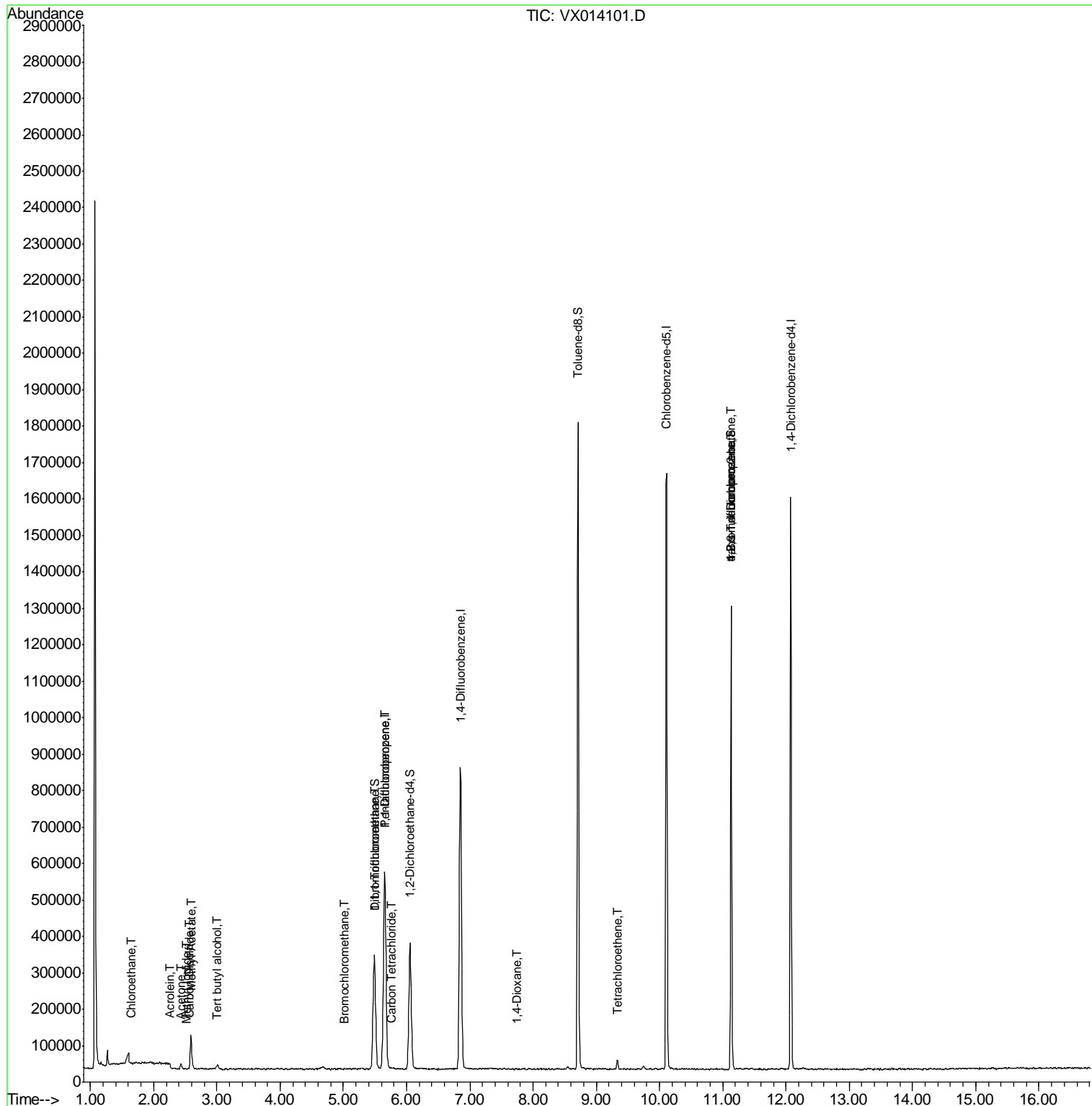
						Qvalue
6) Chloroethane	1.64	64	3830	0.875	ug/l #	75
10) Methyl Iodide	2.52	142	339	2.667	ug/l #	41
11) Tert butyl alcohol	3.01	59	8441	6.159	ug/l #	72
13) Acrolein	2.25	56	1448	1.846	ug/l #	41
16) Acetone	2.43	43	16999	4.128	ug/l	97
17) Carbon Disulfide	2.56	76	1065	0.820	ug/l #	75
18) Methyl Acetate	2.59	43	25448	3.119	ug/l #	53
28) Bromochloromethane	5.01	49	938	0.681	ug/l #	11
32) 1,1,1-Trichloroethane	5.49	97	10909	1.267	ug/l #	50
36) 1,1-Dichloropropene	5.65	75	38905	4.903	ug/l #	51
38) Carbon Tetrachloride	5.77	117	2260	0.313	ug/l #	59
49) 1,4-Dioxane	7.75	88	217	1.502	ug/l #	23
64) Tetrachloroethene	9.33	164	6426	0.937	ug/l	93
76) 1,2,3-Trichloropropane	11.13	75	165922	23.227	ug/l #	39
81) trans-1,4-Dichloro-2-buten	11.13	75	165922	65.558	ug/l #	12

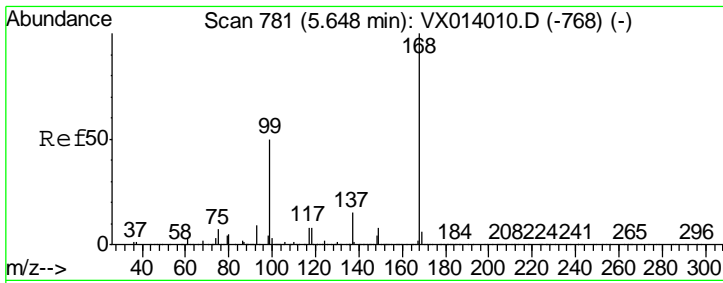
(#) = qualifier out of range (m) = manual integration (+) = signals summed

Data Path : Z:\VOASRV\HPCHEM1\MSVOA X\DATA\VX121819\  
 Data File : VX014101.D  
 Acq On : 18 Dec 2019 16:57  
 Operator : JC/SP  
 Sample : K6300-05  
 Misc : 5.0mL/MSVOA X/WATER  
 ALS Vial : 19 Sample Multiplier: 1

Instrument :  
 MSVOA\_X  
 ClientSampled :  
 SSI-BFD

Quant Time: Dec 19 03:01:09 2019  
 Quant Method : Z:\VOASRV\HPCHEM1\MSVOA\_X\METHOD\82X121319W.M  
 Quant Title : SW846 8260  
 QLast Update : Tue Dec 17 03:01:07 2019  
 Response via : Initial Calibration

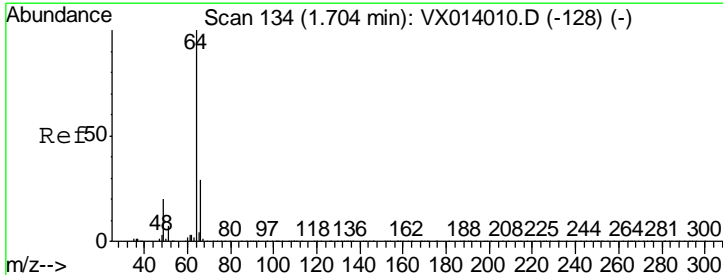
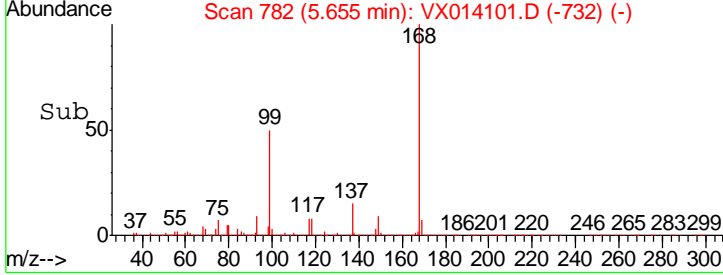
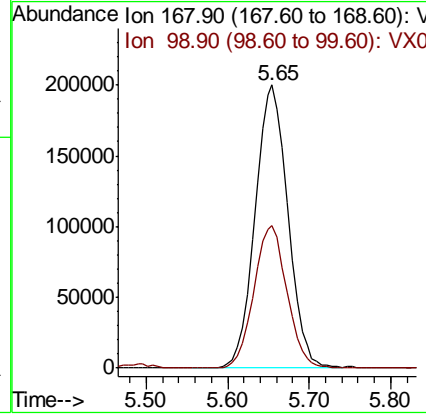
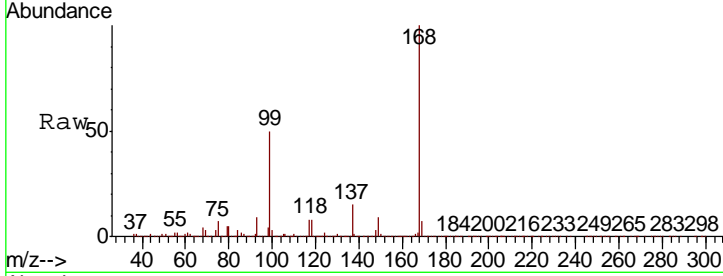




#1  
 Pentafluorobenzene  
 Concen: 50.000 ug/l  
 RT: 5.65 min Scan# 782  
 Delta R.T. 0.01 min  
 Lab File: VX014101.D  
 Acq: 18 Dec 2019 16:57

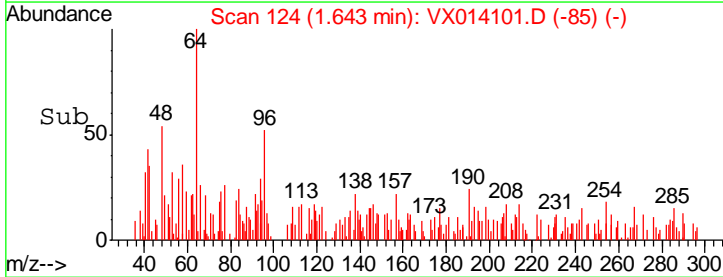
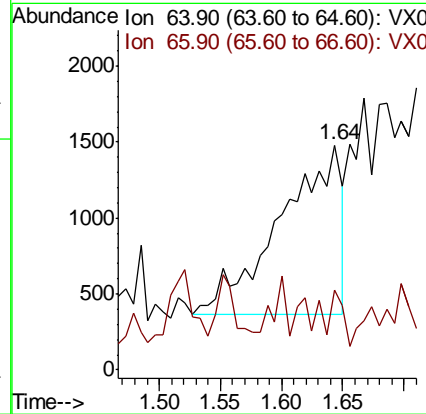
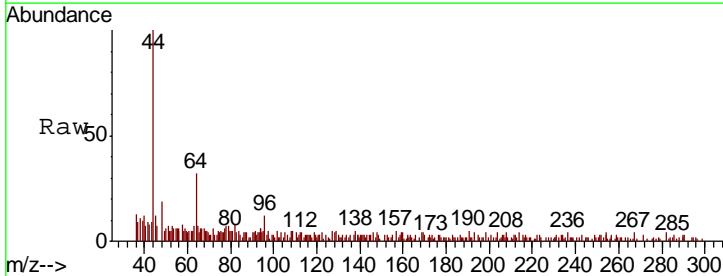
Instrument : MSVOA\_X  
 Client Sampled : SSI-BFD

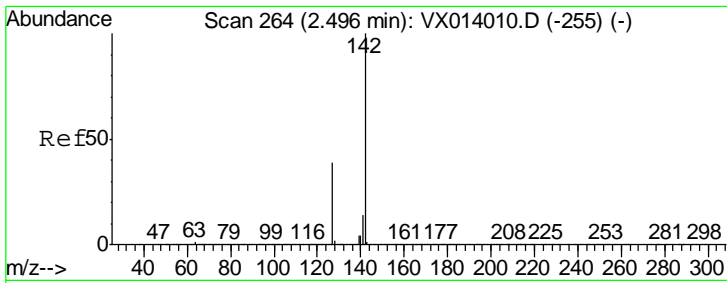
Tgt Ion	Resp	Lower	Upper
168	100		
99	50.3	40.3	60.5



#6  
 Chloroethane  
 Concen: 0.875 ug/l  
 RT: 1.64 min Scan# 124  
 Delta R.T. -0.06 min  
 Lab File: VX014101.D  
 Acq: 18 Dec 2019 16:57

Tgt Ion	Resp	Lower	Upper
64	100		
66	15.8	23.4	35.2#

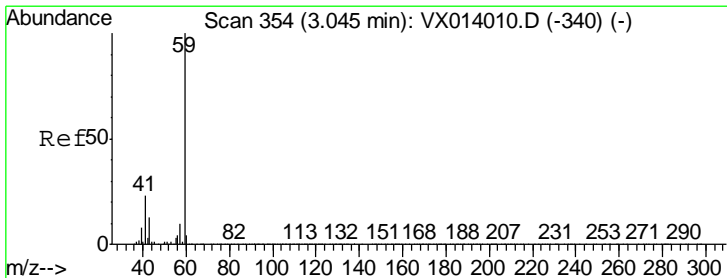
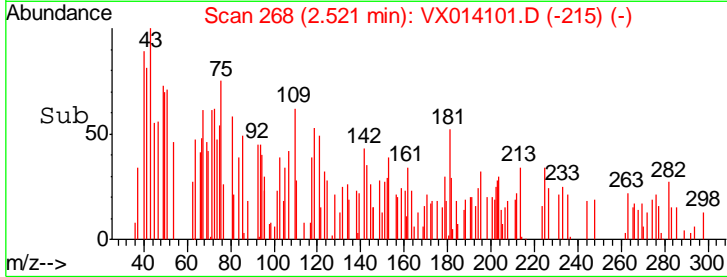
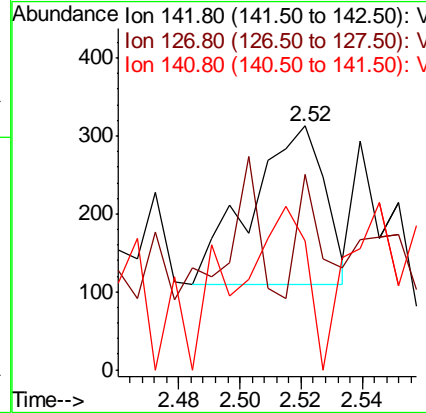
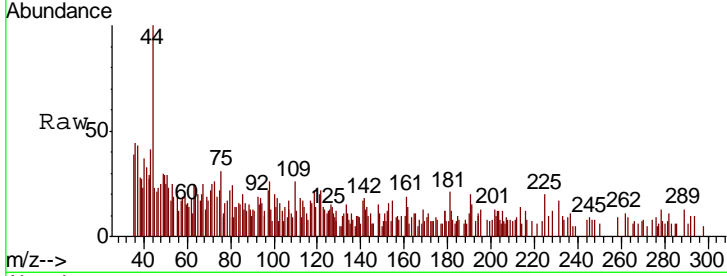




#10  
Methyl Iodide  
Concen: 2.667 ug/l  
RT: 2.52 min Scan# 268  
Delta R.T. 0.03 min  
Lab File: VX014101.D  
Acq: 18 Dec 2019 16:57

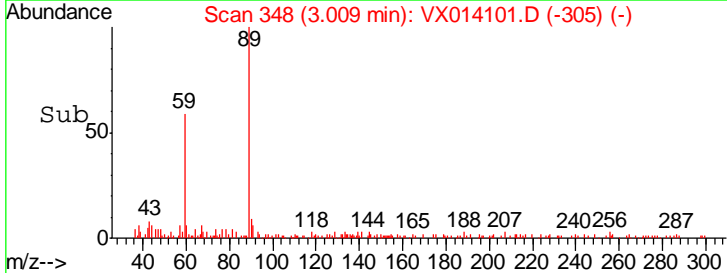
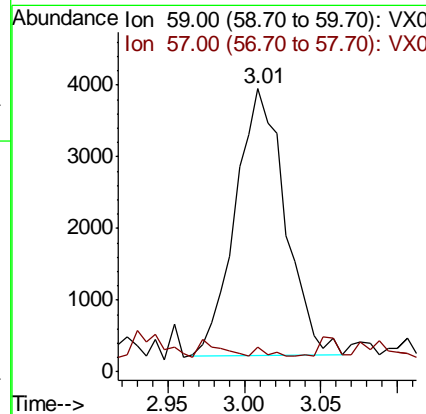
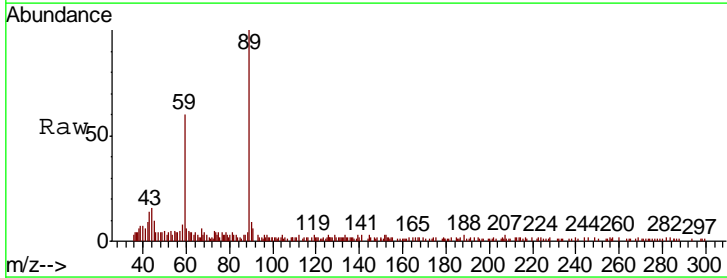
Instrument :  
MSVOA\_X  
ClientSampled :  
SSI-BFD

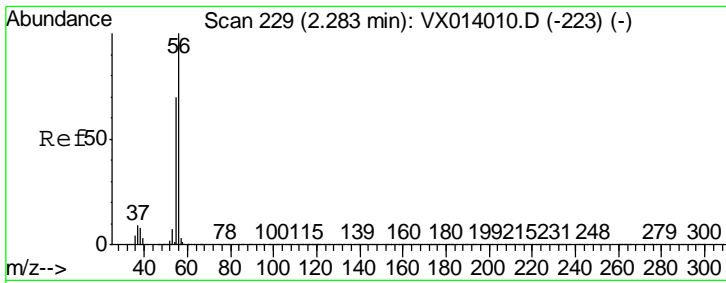
Tgt Ion	Resp	Lower	Upper
142	100		
127	35.7	31.6	47.4
141	98.5	11.6	17.4#



#11  
Tert butyl alcohol  
Concen: 6.159 ug/l  
RT: 3.01 min Scan# 348  
Delta R.T. -0.04 min  
Lab File: VX014101.D  
Acq: 18 Dec 2019 16:57

Tgt Ion	Resp	Lower	Upper
59	100		
57	0.0	8.4	12.6#

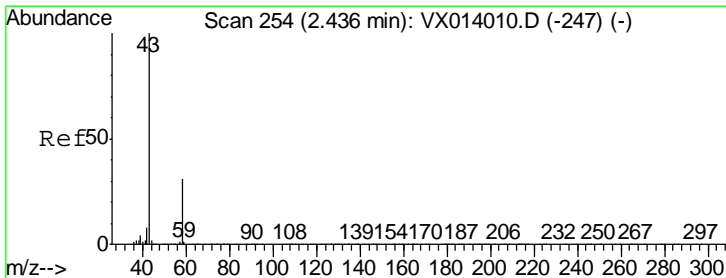
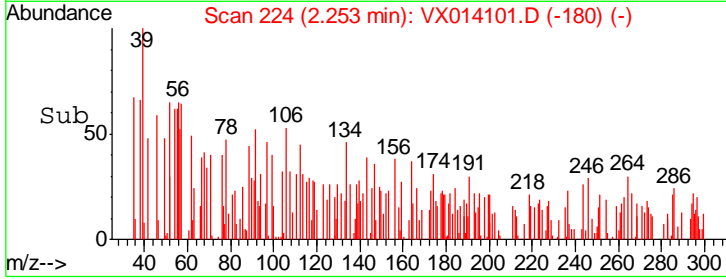
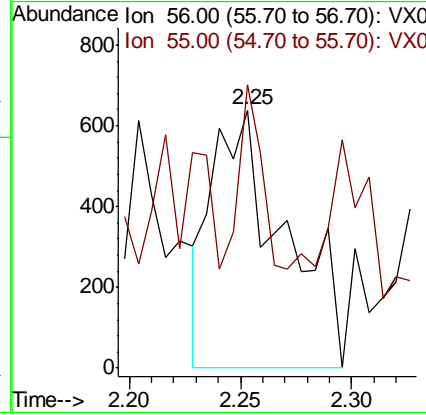
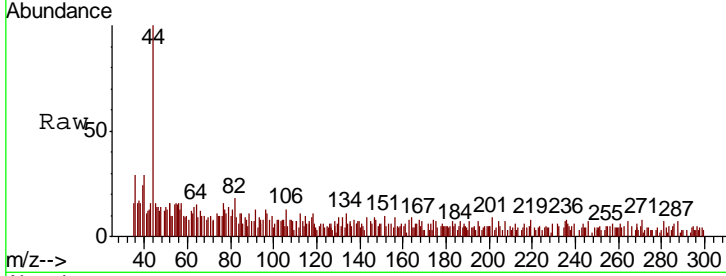




#13  
 Acrolein  
 Concen: 1.846 ug/l  
 RT: 2.25 min Scan# 224  
 Delta R.T. -0.03 min  
 Lab File: VX014101.D  
 Acq: 18 Dec 2019 16:57

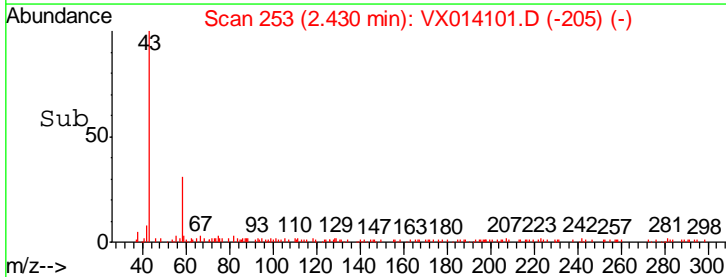
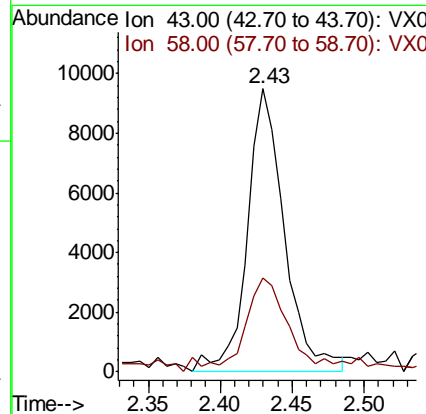
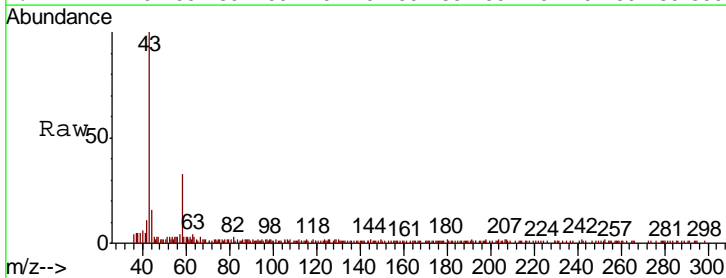
Instrument :  
 MSVOA\_X  
 ClientSampled :  
 SSI-BFD

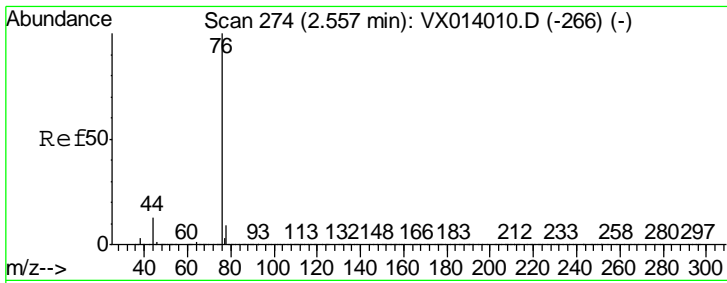
Tgt Ion: 56 Resp: 1448  
 Ion Ratio Lower Upper  
 56 100  
 55 22.1 56.9 85.3#



#16  
 Acetone  
 Concen: 4.128 ug/l  
 RT: 2.43 min Scan# 253  
 Delta R.T. -0.01 min  
 Lab File: VX014101.D  
 Acq: 18 Dec 2019 16:57

Tgt Ion: 43 Resp: 16999  
 Ion Ratio Lower Upper  
 43 100  
 58 29.6 24.9 37.3

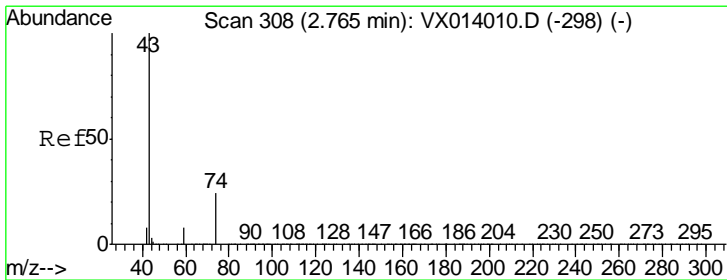
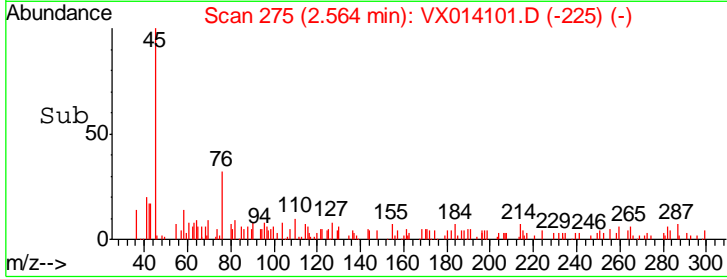
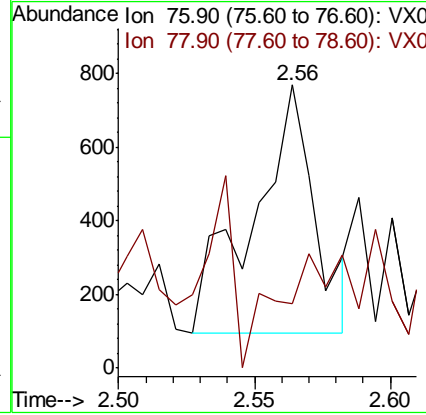
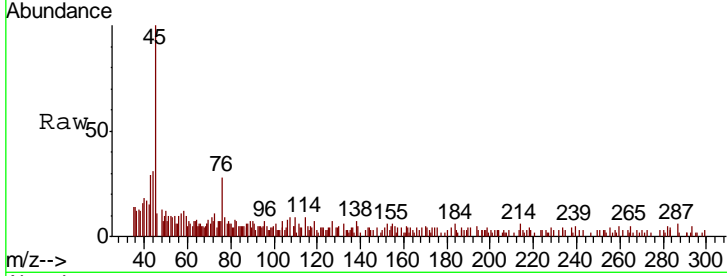




#17  
 Carbon Disulfide  
 Concen: 0.820 ug/l  
 RT: 2.56 min Scan# 275  
 Delta R.T. 0.01 min  
 Lab File: VX014101.D  
 Acq: 18 Dec 2019 16:57

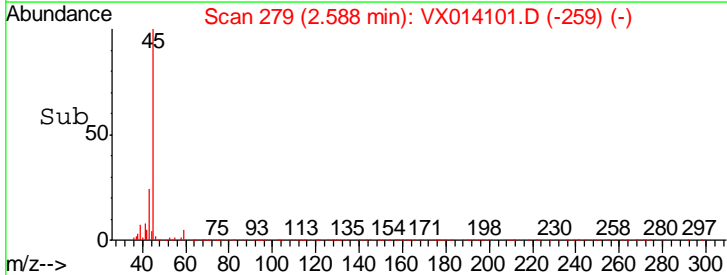
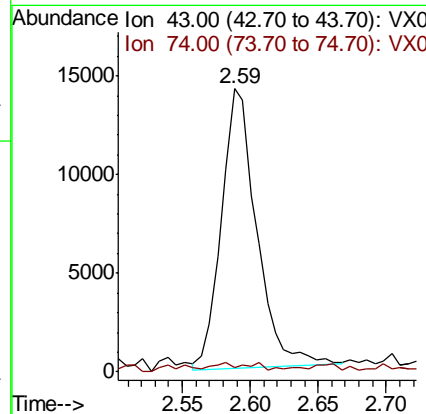
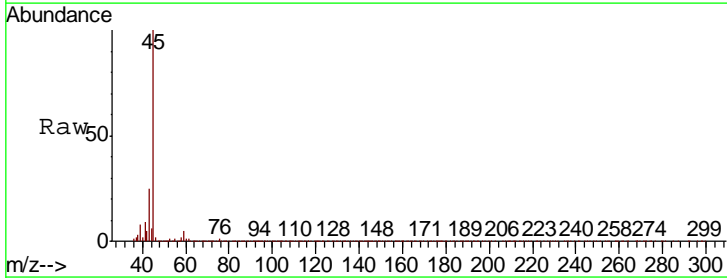
Instrument : MSVOA\_X  
 ClientSampled : SSI-BFD

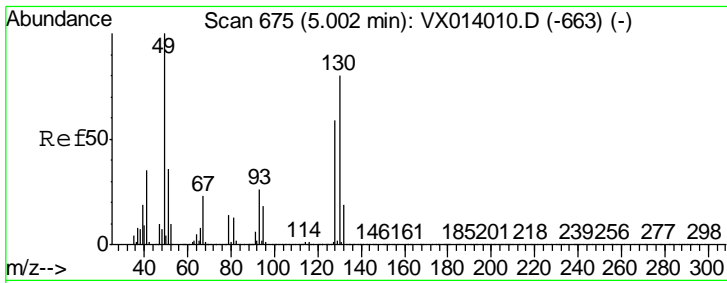
Tgt Ion	Resp	Lower	Upper
76	1065		
76	100		
78	0.0	7.2	10.8#



#18  
 Methyl Acetate  
 Concen: 3.119 ug/l  
 RT: 2.59 min Scan# 279  
 Delta R.T. -0.18 min  
 Lab File: VX014101.D  
 Acq: 18 Dec 2019 16:57

Tgt Ion	Resp	Lower	Upper
43	25448		
43	100		
74	1.0	19.5	29.3#

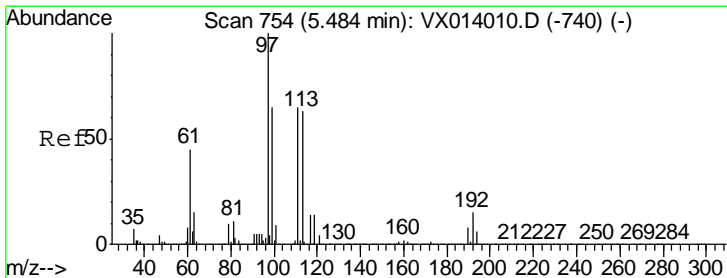
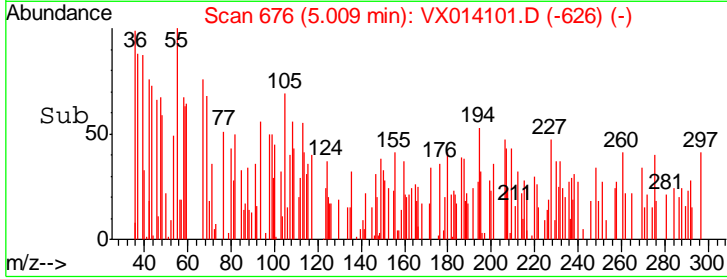
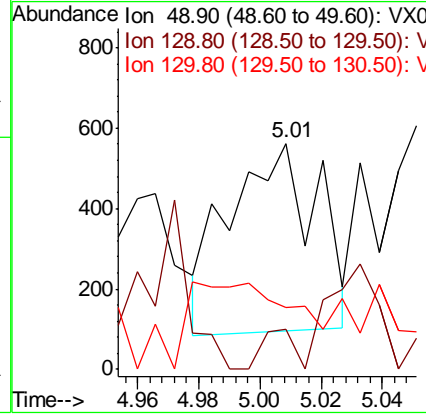
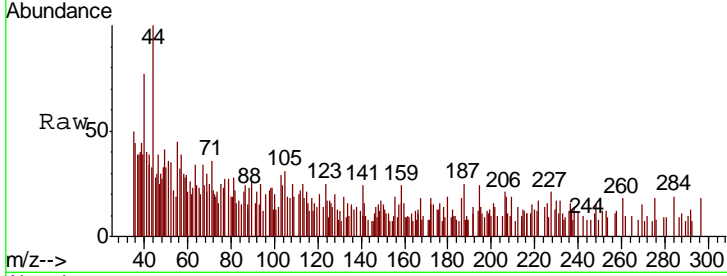




#28  
 Bromochloromethane  
 Concen: 0.681 ug/l  
 RT: 5.01 min Scan# 676  
 Delta R.T. 0.01 min  
 Lab File: VX014101.D  
 Acq: 18 Dec 2019 16:57

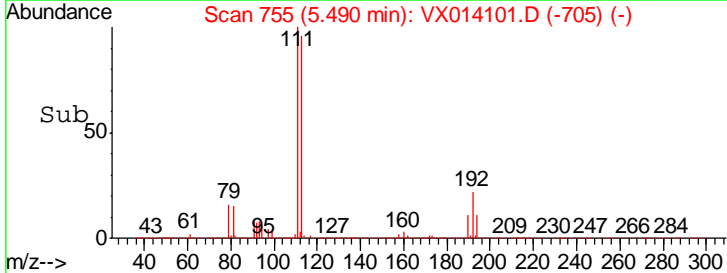
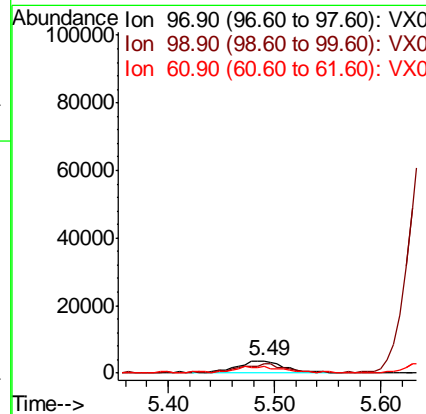
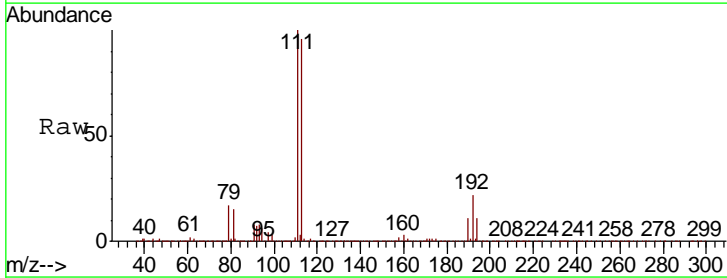
Instrument :  
 MSVOA\_X  
 ClientSampled :  
 SSI-BFD

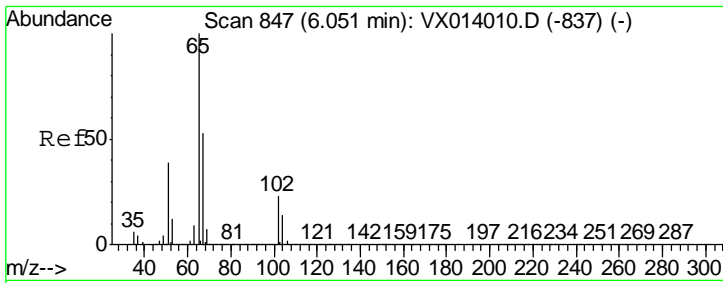
Tgt Ion	Resp	Lower	Upper
49	100		
129	0.0	0.0	5.0
130	0.0	64.6	97.0



#32  
 1,1,1-Trichloroethane  
 Concen: 1.267 ug/l  
 RT: 5.49 min Scan# 755  
 Delta R.T. 0.01 min  
 Lab File: VX014101.D  
 Acq: 18 Dec 2019 16:57

Tgt Ion	Resp	Lower	Upper
97	100		
99	0.0	52.0	78.0
61	47.8	36.7	55.1

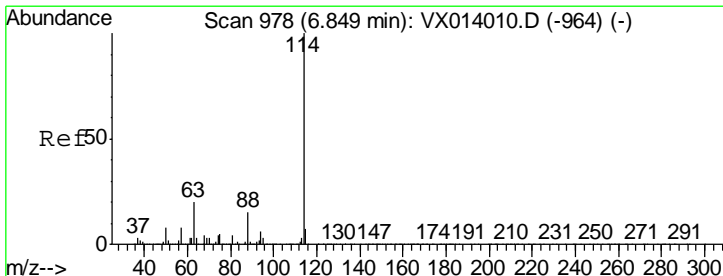
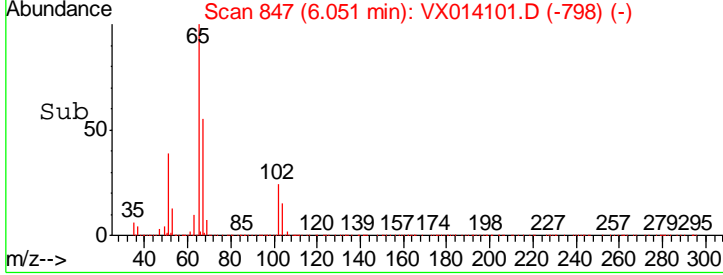
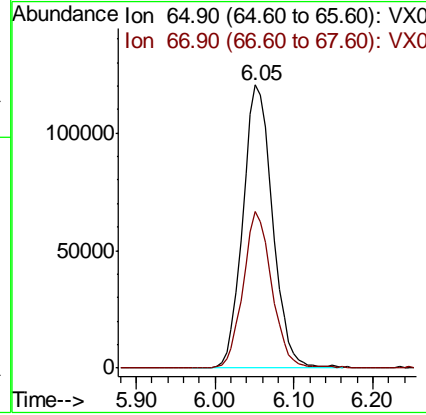
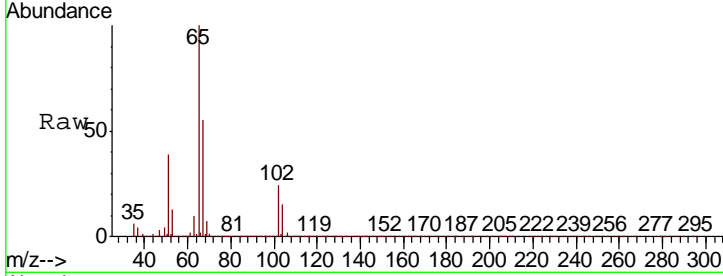




#33  
 1,2-Dichloroethane-d4  
 Concen: 49.928 ug/l  
 RT: 6.05 min Scan# 847  
 Delta R.T. 0.00 min  
 Lab File: VX014101.D  
 Acq: 18 Dec 2019 16:57

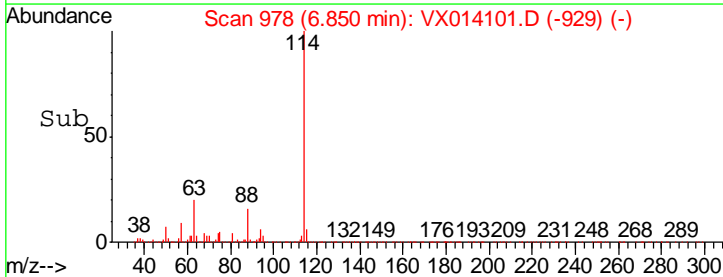
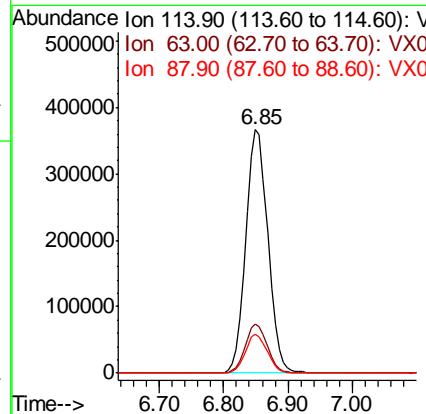
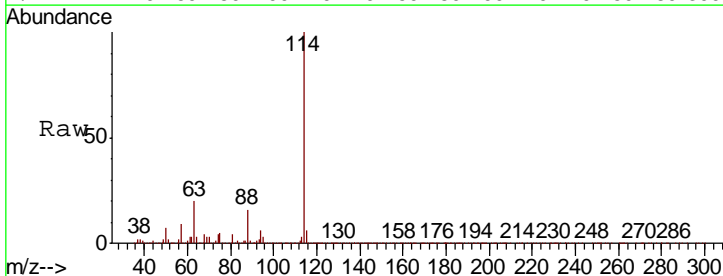
Instrument :  
 MSVOA\_X  
 ClientSampled :  
 SSI-BFD

Tgt Ion	Resp	Lower	Upper
65	100		
67	52.9	0.0	106.4

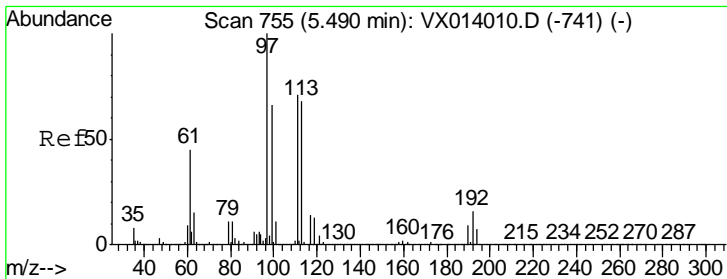


#34  
 1,4-Difluorobenzene  
 Concen: 50.000 ug/l  
 RT: 6.85 min Scan# 978  
 Delta R.T. 0.00 min  
 Lab File: VX014101.D  
 Acq: 18 Dec 2019 16:57

Tgt Ion	Resp	Lower	Upper
114	100		
63	20.1	0.0	40.8
88	15.8	0.0	30.4



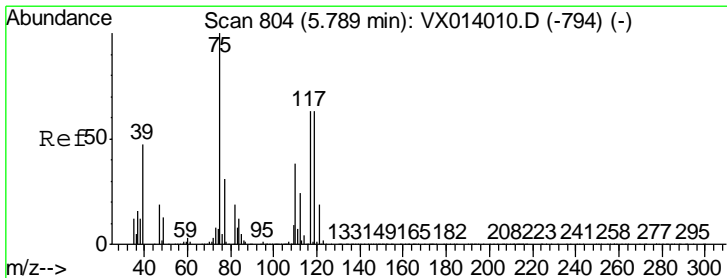
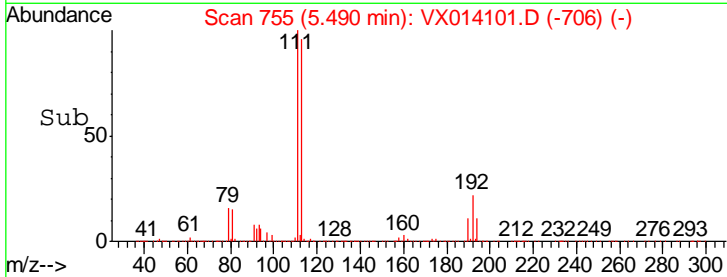
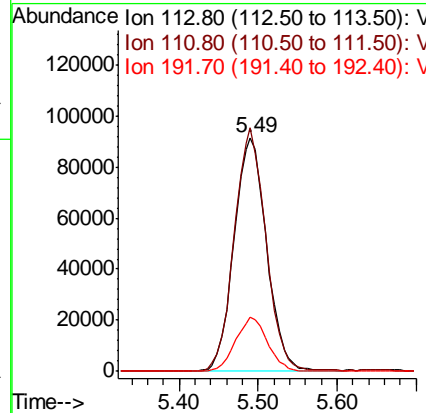
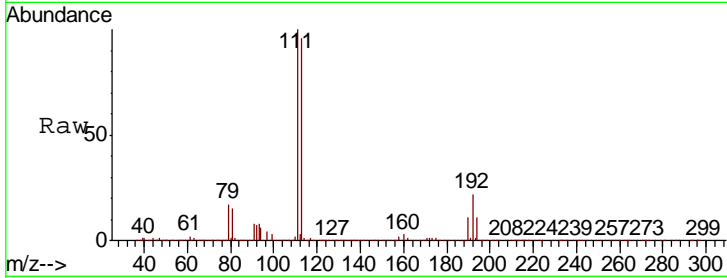




#35  
 Dibromofluoromethane  
 Concen: 49.639 ug/l  
 RT: 5.49 min Scan# 755  
 Delta R.T. 0.00 min  
 Lab File: VX014101.D  
 Acq: 18 Dec 2019 16:57

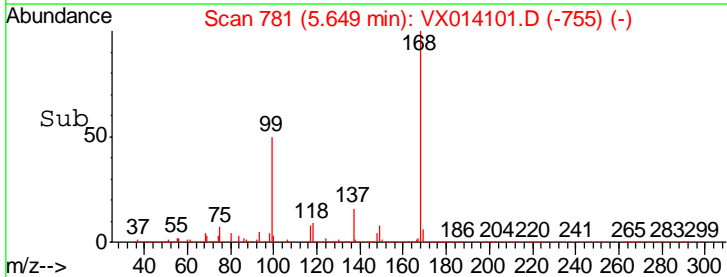
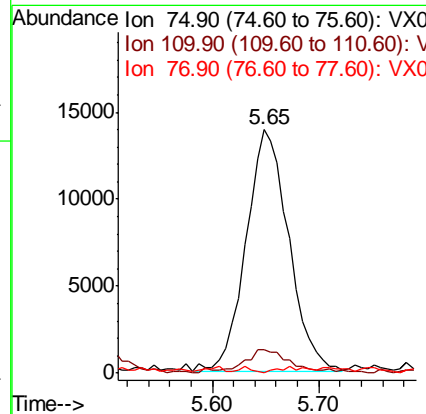
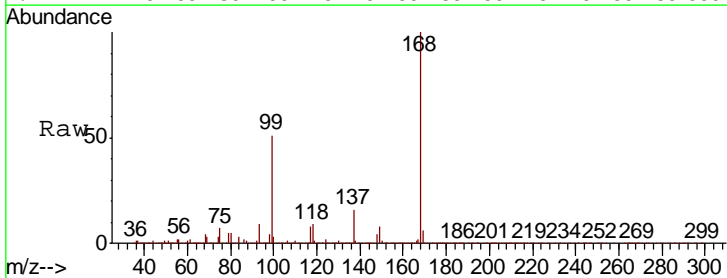
Instrument :  
 MSVOA\_X  
 ClientSampled :  
 SSI-BFD

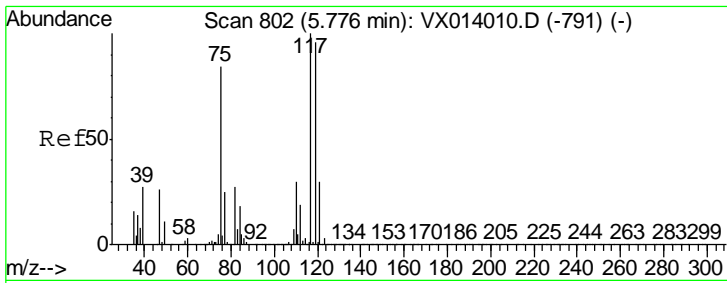
Tgt Ion	Resp	Lower	Upper
113	260941		
113	100		
111	101.1	82.0	123.0
192	23.0	19.3	28.9



#36  
 1,1-Dichloropropene  
 Concen: 4.903 ug/l  
 RT: 5.65 min Scan# 781  
 Delta R.T. -0.14 min  
 Lab File: VX014101.D  
 Acq: 18 Dec 2019 16:57

Tgt Ion	Resp	Lower	Upper
75	38905		
75	100		
110	10.3	18.3	54.9#
77	0.8	24.8	37.2#

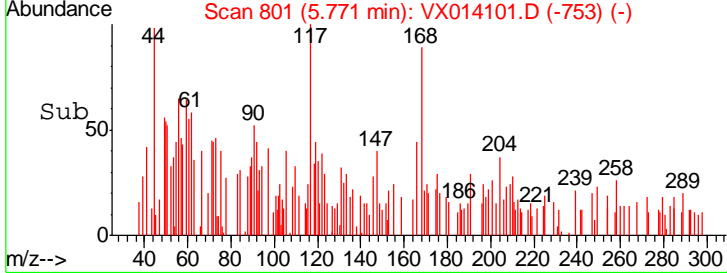
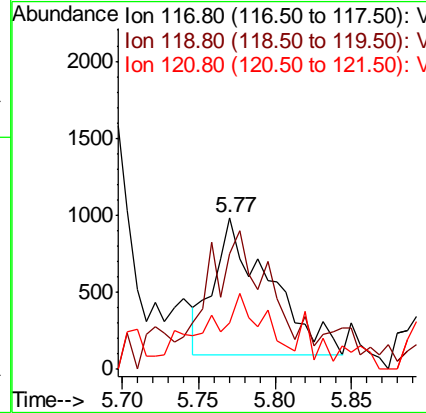
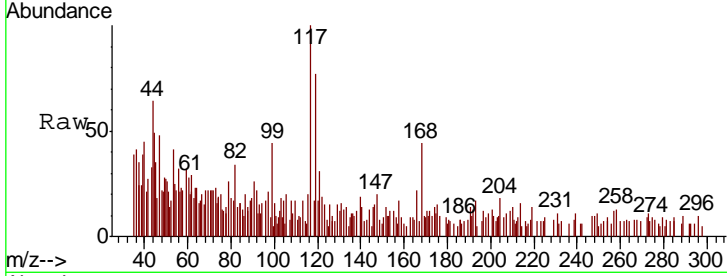




#38  
 Carbon Tetrachloride  
 Concen: 0.313 ug/l  
 RT: 5.77 min Scan# 801  
 Delta R.T. -0.01 min  
 Lab File: VX014101.D  
 Acq: 18 Dec 2019 16:57

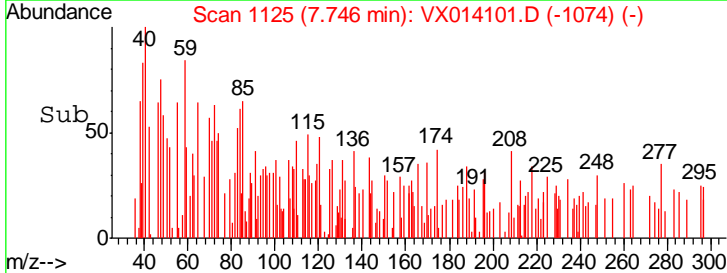
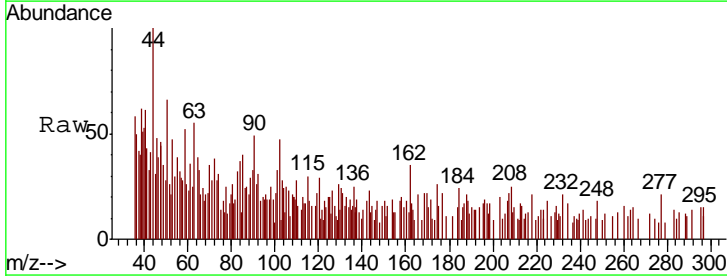
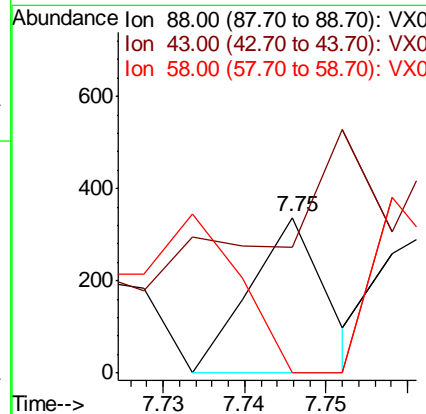
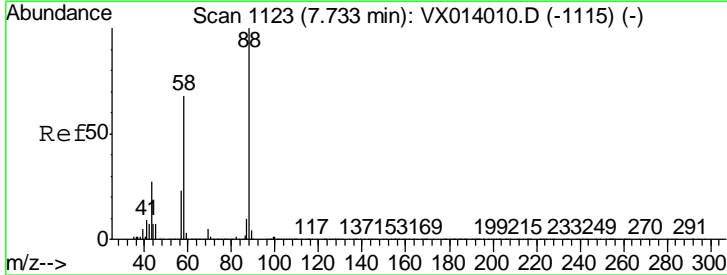
Instrument :  
 MSVOA\_X  
 ClientSampled :  
 SSI-BFD

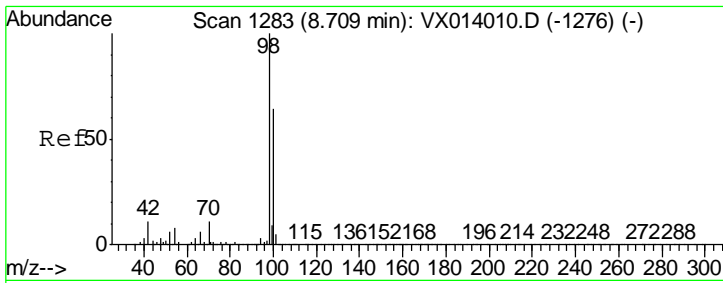
Tgt Ion	Resp	Lower	Upper
117	100		
119	54.1	76.2	114.4#
121	9.7	23.6	35.4#



#49  
 1,4-Dioxane  
 Concen: 1.502 ug/l  
 RT: 7.75 min Scan# 1125  
 Delta R.T. 0.01 min  
 Lab File: VX014101.D  
 Acq: 18 Dec 2019 16:57

Tgt Ion	Resp	Lower	Upper
88	100		
43	0.0	26.5	39.7#
58	0.0	56.8	85.2#

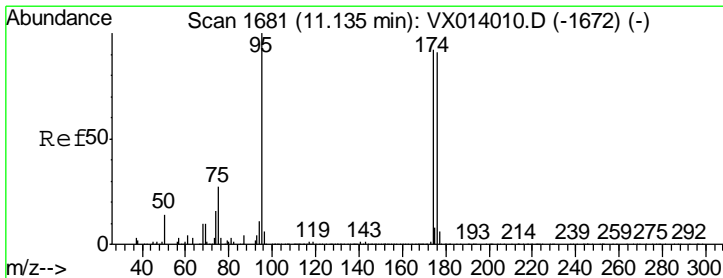
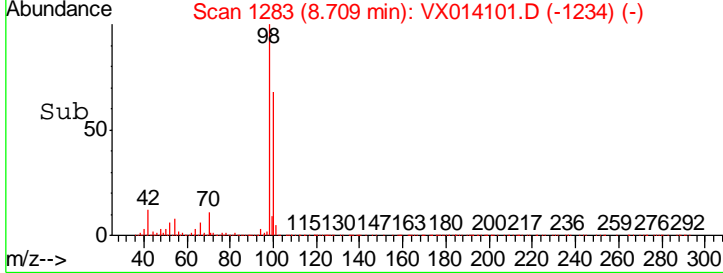
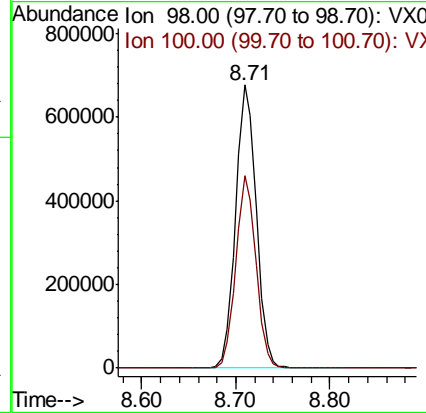
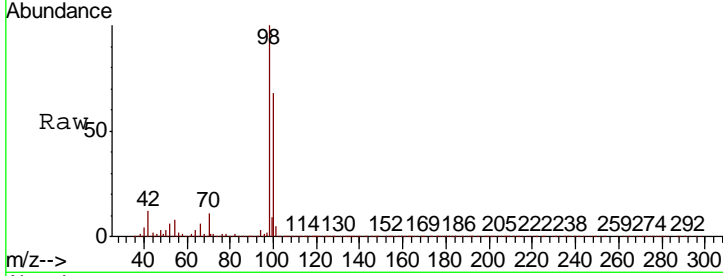




#50  
 Toluene-d8  
 Concen: 50.315 ug/l  
 RT: 8.71 min Scan# 1283  
 Delta R.T. 0.00 min  
 Lab File: VX014101.D  
 Acq: 18 Dec 2019 16:57

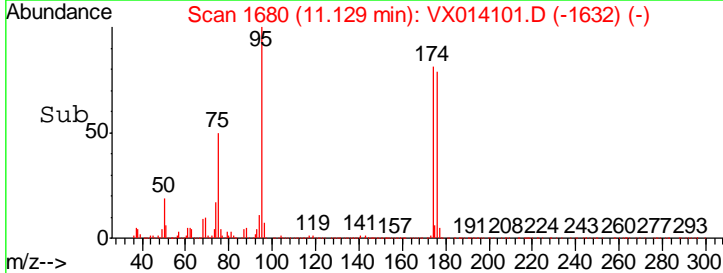
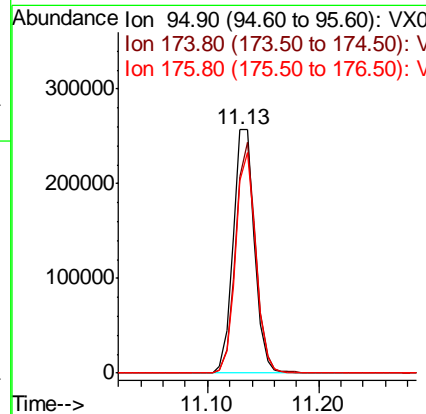
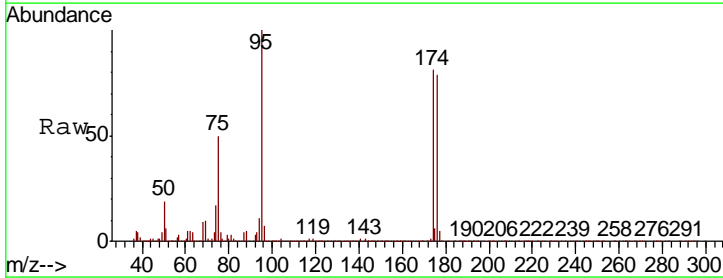
**Instrument :**  
 MSVOA\_X  
**ClientSampled :**  
 SSI-BFD

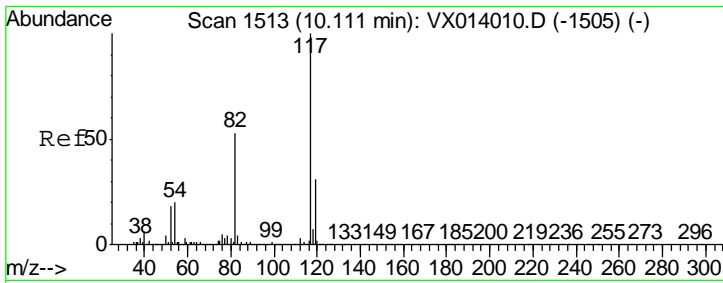
Tgt Ion	Resp	Lower	Upper
98	1029753		
100	66.5	52.9	79.3



#62  
 4-Bromofluorobenzene  
 Concen: 45.306 ug/l  
 RT: 11.13 min Scan# 1680  
 Delta R.T. -0.01 min  
 Lab File: VX014101.D  
 Acq: 18 Dec 2019 16:57

Tgt Ion	Resp	Lower	Upper
95	338947		
174	89.9	0.0	175.8
176	86.5	0.0	173.0

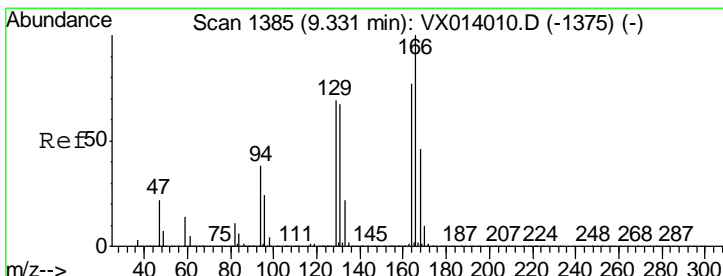
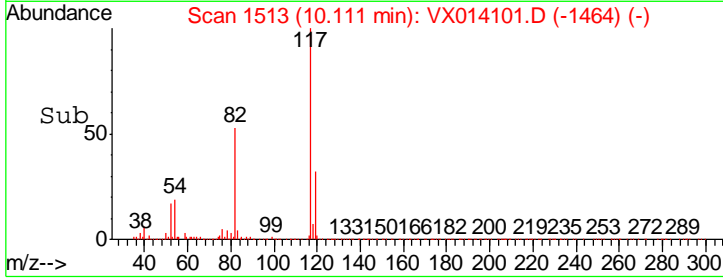
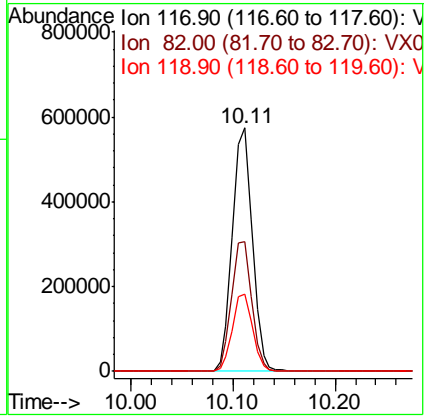
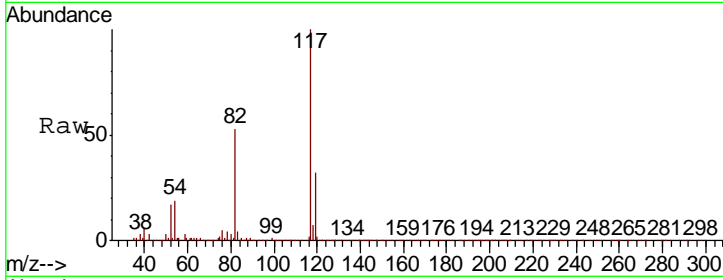




#63  
 Chlorobenzene-d5  
 Concen: 50.000 ug/l  
 RT: 10.11 min Scan# 1513  
 Delta R.T. 0.00 min  
 Lab File: VX014101.D  
 Acq: 18 Dec 2019 16:57

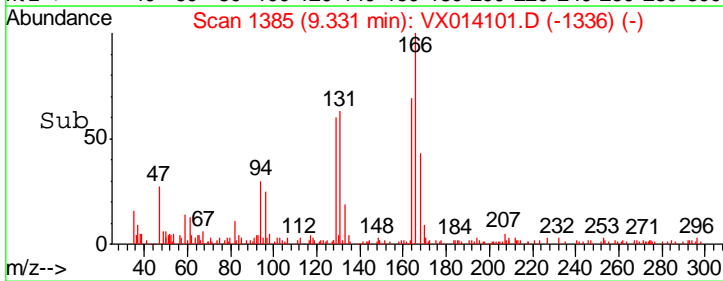
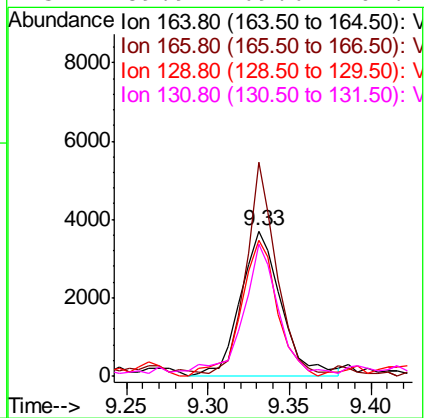
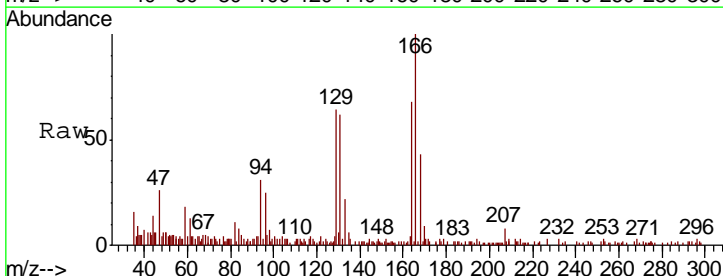
Instrument : MSVOA\_X  
 ClientSampled : SSI-BFD

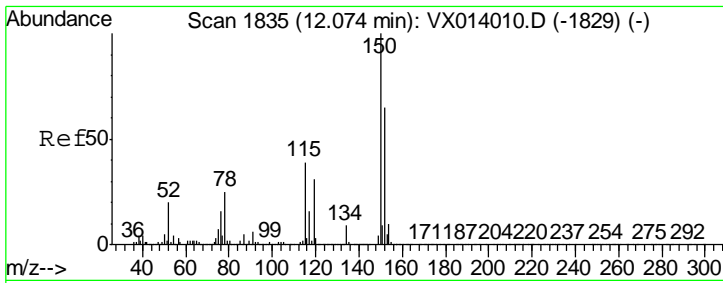
Tgt Ion	Resp	Lower	Upper
117	100		
82	53.2	42.2	63.4
119	31.5	25.1	37.7



#64  
 Tetrachloroethene  
 Concen: 0.937 ug/l  
 RT: 9.33 min Scan# 1385  
 Delta R.T. 0.00 min  
 Lab File: VX014101.D  
 Acq: 18 Dec 2019 16:57

Tgt Ion	Resp	Lower	Upper
164	100		
166	144.2	104.0	156.0
129	93.8	72.2	108.4
131	89.9	69.6	104.4

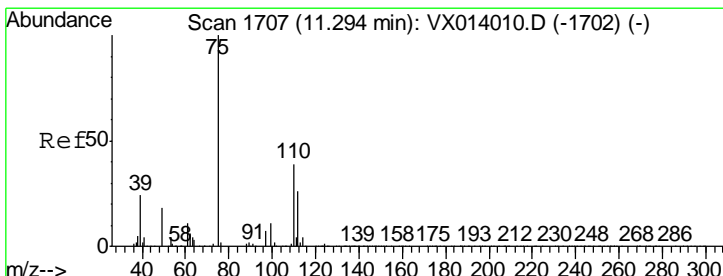
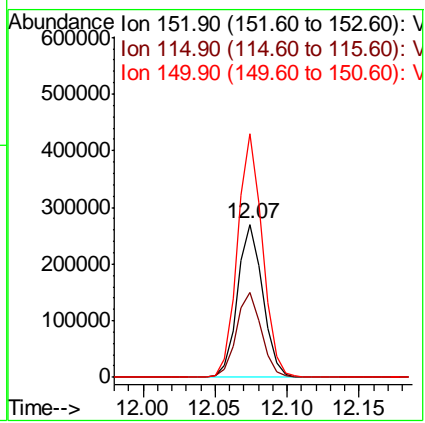
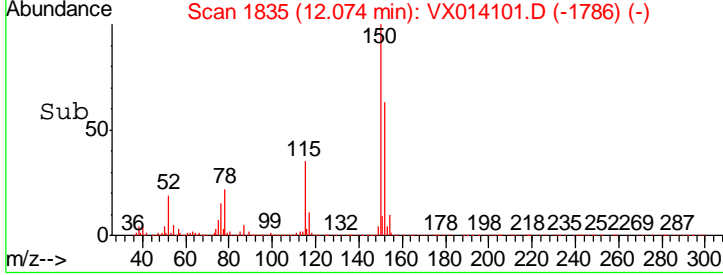
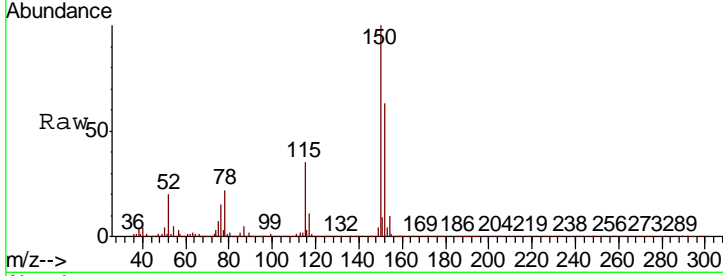




#72  
 1,4-Dichlorobenzene-d4  
 Concen: 50.000 ug/l  
 RT: 12.07 min Scan# 1835  
 Delta R.T. 0.00 min  
 Lab File: VX014101.D  
 Acq: 18 Dec 2019 16:57

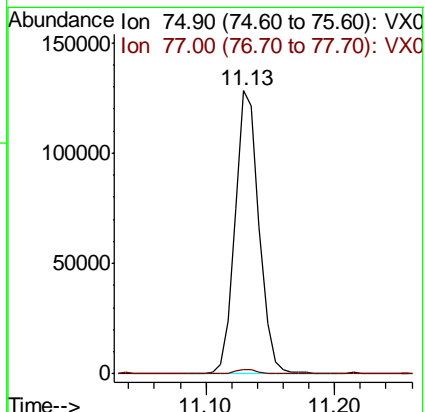
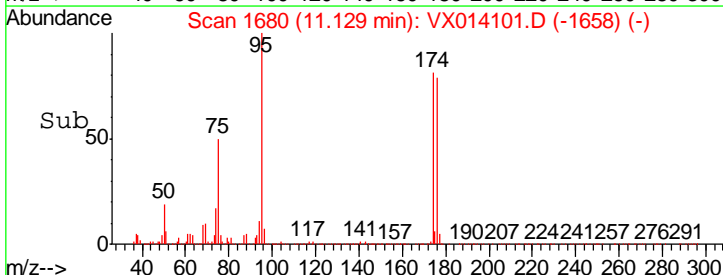
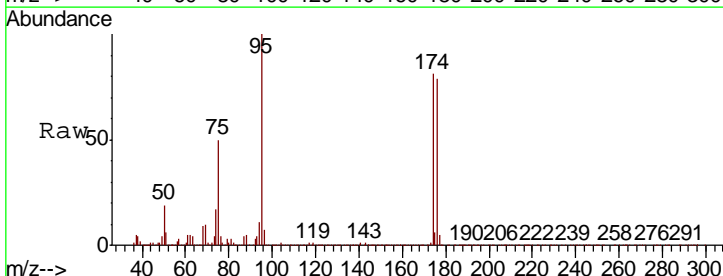
Instrument : MSVOA\_X  
 ClientSampled : SSI-BFD

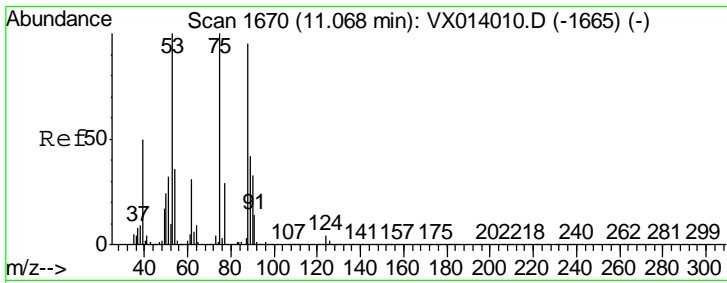
Tgt Ion	Resp	Lower	Upper
152	100		
115	55.3	38.3	114.9
150	157.4	0.0	345.4



#76  
 1,2,3-Trichloropropane  
 Concen: 23.227 ug/l  
 RT: 11.13 min Scan# 1680  
 Delta R.T. -0.16 min  
 Lab File: VX014101.D  
 Acq: 18 Dec 2019 16:57

Tgt Ion	Resp	Lower	Upper
75	100		
77	1.4	19.3	57.8#





#81  
 trans-1,4-Dichloro-2-butene  
 Concen: 65.558 ug/l  
 RT: 11.13 min Scan# 1680  
 Delta R.T. 0.06 min  
 Lab File: VX014101.D  
 Acq: 18 Dec 2019 16:57

Instrument :  
 MSVOA\_X  
 ClientSampleId :  
 SSI-BFD

Tot Ion	75	Resp	165922
Ion	Ratio	Lower	Upper
75	100		
53	0.2	76.7	115.1#
89	0.2	34.6	51.8#

