

Data Path : Z:\voasrv\HPCHEM1\MSVOA\_X\Data\VX121820\  
 Data File : VX020160.D  
 Acq On : 19 Dec 2020 09:20  
 Operator : JC/MD  
 Sample : L5144-02  
 Misc : 5.0mL/MSVOA\_X/WATER  
 ALS Vial : 49 Sample Multiplier: 1

Instrument :  
 MSVOA\_X  
 ClientSampleId :  
 STORAGE-BLANK-WATER-REF-5

Quant Time: Dec 21 00:14:02 2020  
 Quant Method : Z:\VOASRV\HPCHEM1\MSVOA\_X\METHOD\82X121820W.M  
 Quant Title : SW846 8260  
 QLast Update : Fri Dec 18 13:09:49 2020  
 Response via : Initial Calibration

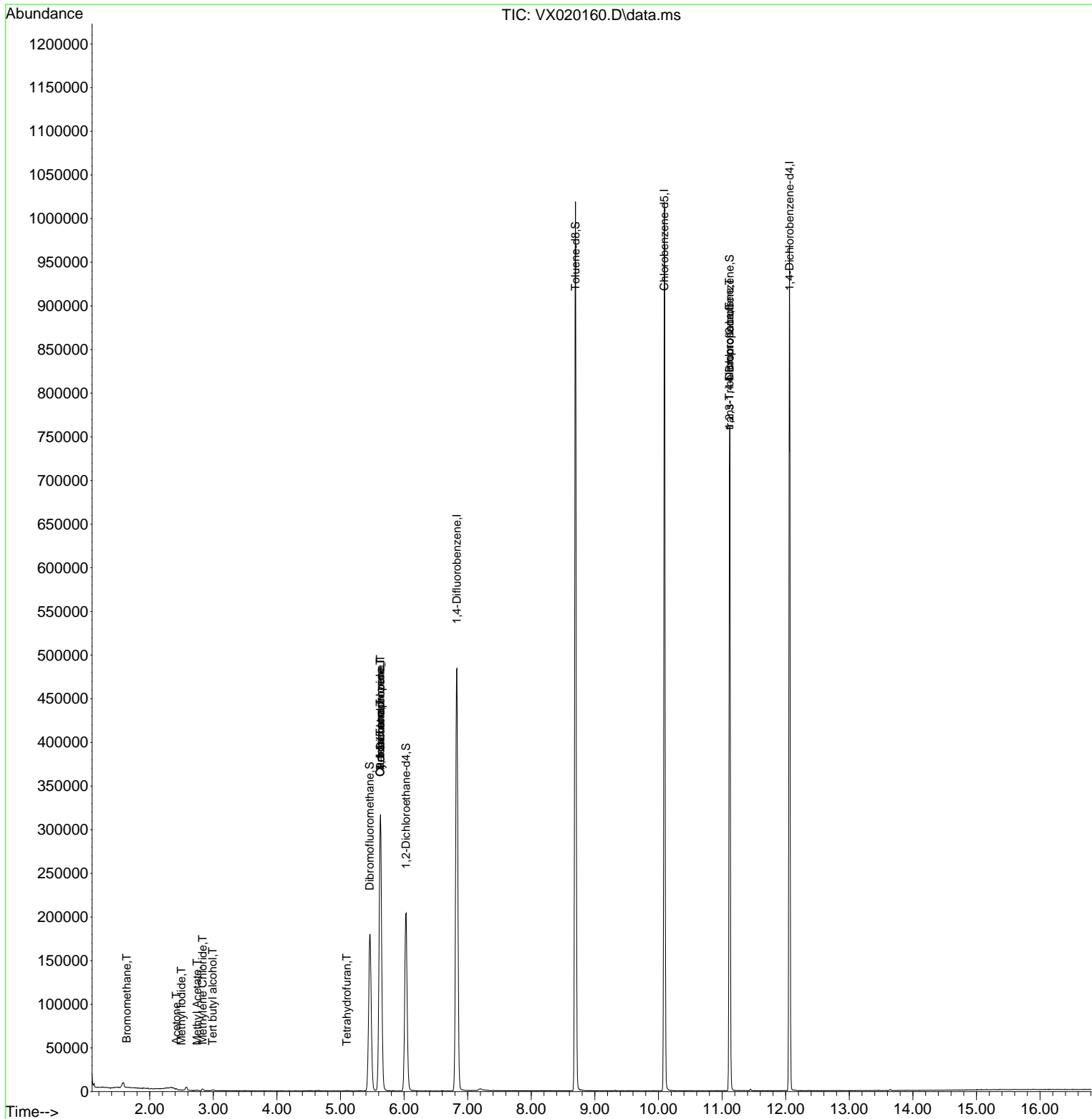
Compound	R.T.	QIon	Response	Conc	Units	Dev(Min)
-----						
Internal Standards						
1) Pentafluorobenzene	5.629	168	303308	50.00	ug/l	0.01
34) 1,4-Difluorobenzene	6.830	114	503857	50.00	ug/l	0.00
63) Chlorobenzene-d5	10.092	117	468726	50.00	ug/l	0.00
72) 1,4-Dichlorobenzene-d4	12.061	152	198406	50.00	ug/l	0.00
System Monitoring Compounds						
33) 1,2-Dichloroethane-d4	6.031	65	194975	47.96	ug/l	0.00
Spiked Amount	50.000	Range 61 - 141	Recovery =	95.92%		
35) Dibromofluoromethane	5.458	113	157604	48.90	ug/l	0.00
Spiked Amount	50.000	Range 69 - 133	Recovery =	97.80%		
50) Toluene-d8	8.696	98	616072	49.66	ug/l	0.00
Spiked Amount	50.000	Range 65 - 126	Recovery =	99.32%		
62) 4-Bromofluorobenzene	11.122	95	215625	45.41	ug/l	0.00
Spiked Amount	50.000	Range 58 - 135	Recovery =	90.82%		
Target Compounds						
						Qvalue
5) Bromomethane	1.636	94	431	0.32	ug/l	91
10) Methyl Iodide	2.495	142	93	3.31	ug/l #	42
11) Tert butyl alcohol	2.989	59	766	0.84	ug/l #	73
16) Acetone	2.416	43	1557	0.84	ug/l	90
18) Methyl Acetate	2.745	43	996	0.24	ug/l #	67
20) Methylene Chloride	2.831	84	844	0.20	ug/l	91
29) Tetrahydrofuran	5.099	42	342	0.20	ug/l #	38
31) Cyclohexane	5.623	56	5787	1.03	ug/l #	1
36) 1,1-Dichloropropene	5.629	75	23210	4.66	ug/l #	48
38) Carbon Tetrachloride	5.623	117	29934	6.32	ug/l #	16
76) 1,2,3-Trichloropropane	11.116	75	104042	21.29	ug/l #	39
81) trans-1,4-Dichloro-2-b...	11.116	75	104042	63.16	ug/l #	12
-----						

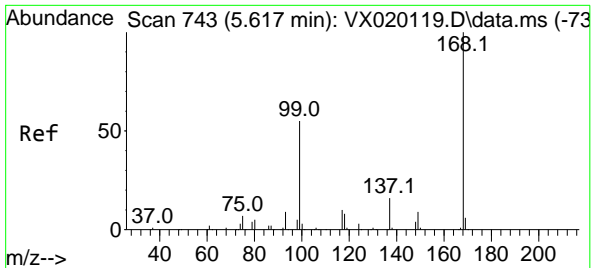
(#) = qualifier out of range (m) = manual integration (+) = signals summed

Data Path : Z:\voasrv\HPCHEM1\MSVOA\_X\Data\VX121820\  
 Data File : VX020160.D  
 Acq On : 19 Dec 2020 09:20  
 Operator : JC/MD  
 Sample : L5144-02  
 Misc : 5.0mL/MSVOA\_X/WATER  
 ALS Vial : 49 Sample Multiplier: 1

Instrument :  
 MSVOA\_X  
 Client Sampled :  
 STORAGE-BLANK-WATER-REF-5

Quant Time: Dec 21 00:14:02 2020  
 Quant Method : Z:\VOASRV\HPCHEM1\MSVOA\_X\METHOD\82X121820W.M  
 Quant Title : SW846 8260  
 QLast Update : Fri Dec 18 13:09:49 2020  
 Response via : Initial Calibration

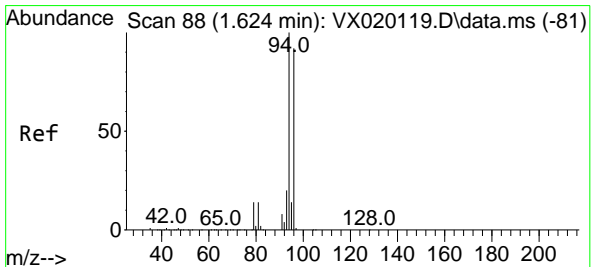
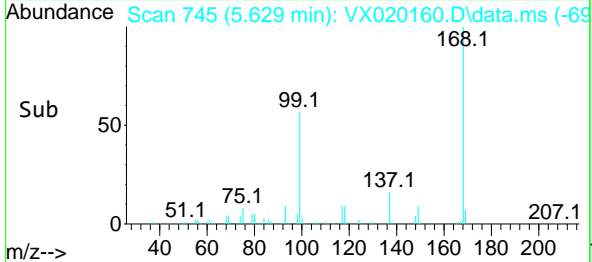
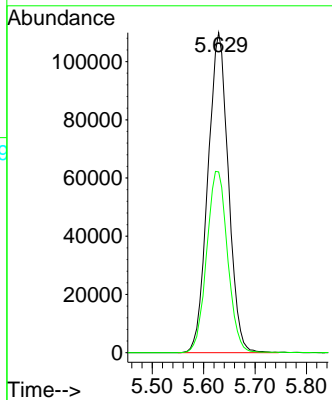
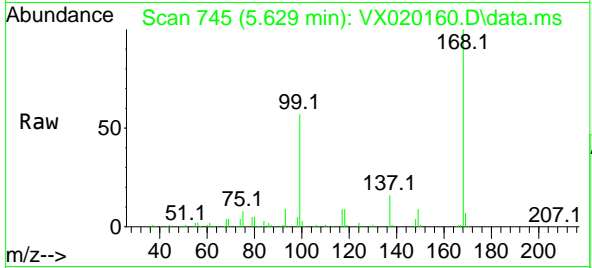




#1  
 Pentafluorobenzene  
 Concen: 50.00 ug/l  
 RT: 5.629 min Scan# 745  
 Delta R.T. 0.012 min  
 Lab File: VX020160.D  
 Acq: 19 Dec 2020 09:20

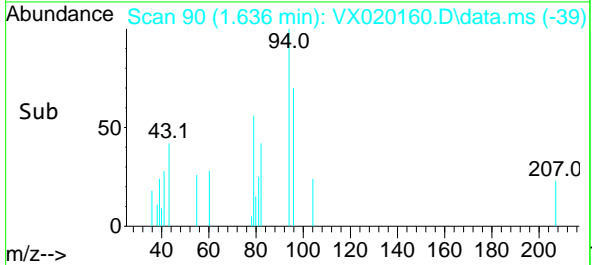
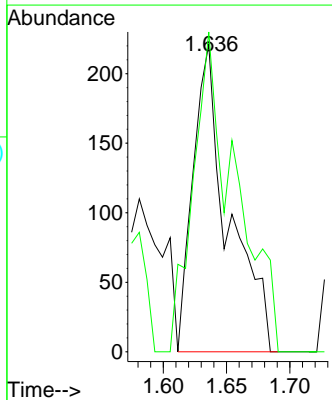
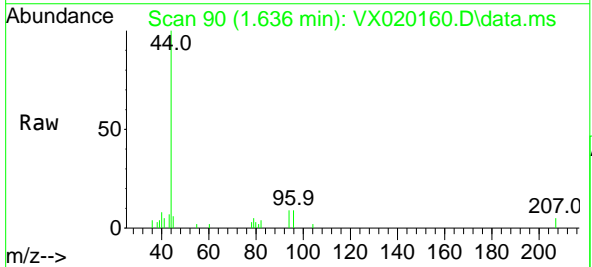
**Instrument :**  
 MSVOA\_X  
**ClientSampled :**  
 STORAGE-BLANK-WATER-REF-5

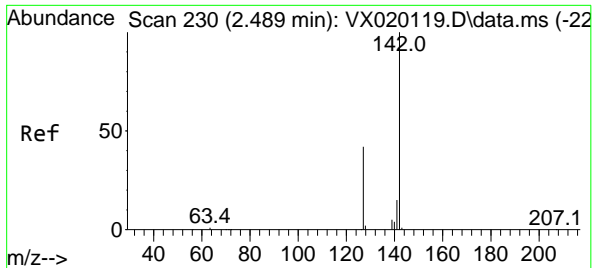
Tgt Ion:168 Resp: 303308  
 Ion Ratio Lower Upper  
 168 100  
 99 56.5 45.8 68.6



#5  
 Bromomethane  
 Concen: 0.32 ug/l  
 RT: 1.636 min Scan# 90  
 Delta R.T. 0.012 min  
 Lab File: VX020160.D  
 Acq: 19 Dec 2020 09:20

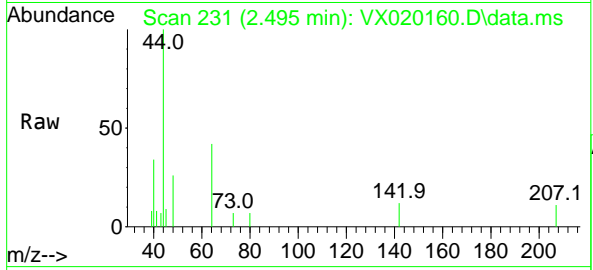
Tgt Ion: 94 Resp: 431  
 Ion Ratio Lower Upper  
 94 100  
 96 104.1 76.4 114.6



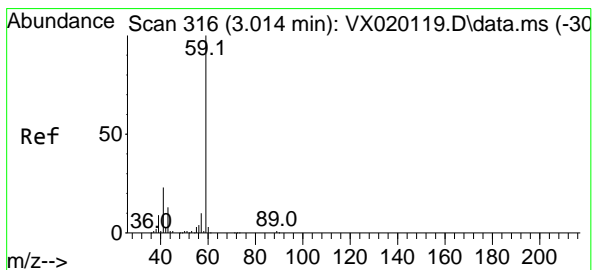
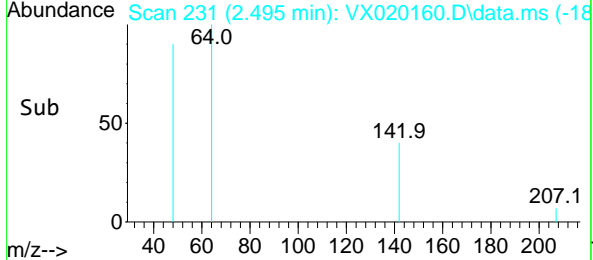
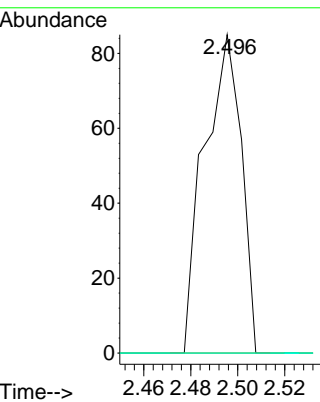


#10  
Methyl Iodide  
Concen: 3.31 ug/l  
RT: 2.495 min Scan# 231  
Delta R.T. 0.006 min  
Lab File: VX020160.D  
Acq: 19 Dec 2020 09:20

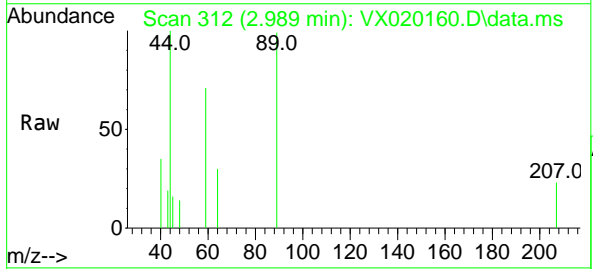
Instrument :  
MSVOA\_X  
ClientSampled :  
STORAGE-BLANK-WATER-REF-5



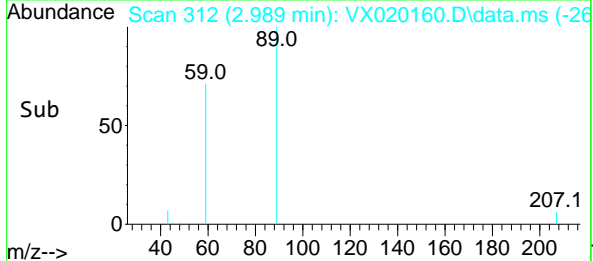
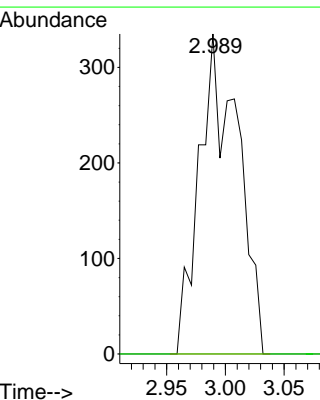
Tgt Ion:142 Resp: 93  
Ion Ratio Lower Upper  
142 100  
127 0.0 33.3 49.9#  
141 0.0 11.4 17.0#

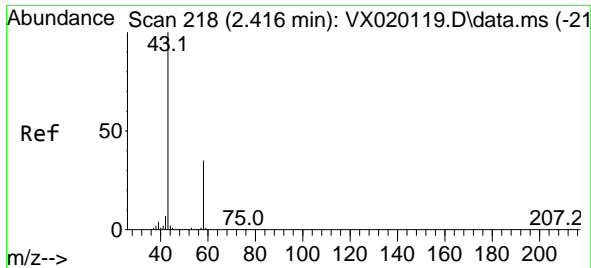


#11  
Tert butyl alcohol  
Concen: 0.84 ug/l  
RT: 2.989 min Scan# 312  
Delta R.T. -0.025 min  
Lab File: VX020160.D  
Acq: 19 Dec 2020 09:20



Tgt Ion: 59 Resp: 766  
Ion Ratio Lower Upper  
59 100  
57 0.0 7.8 11.8#

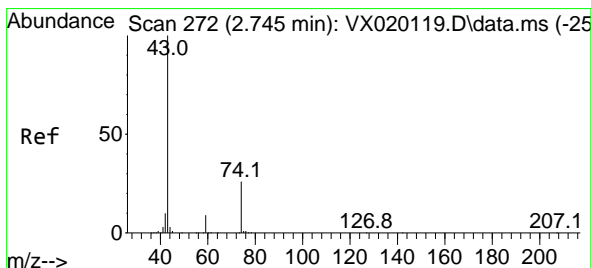
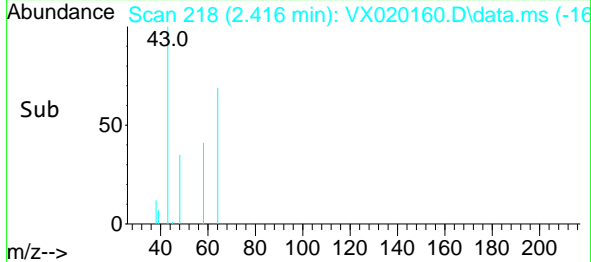
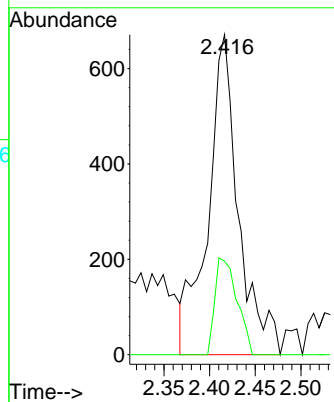
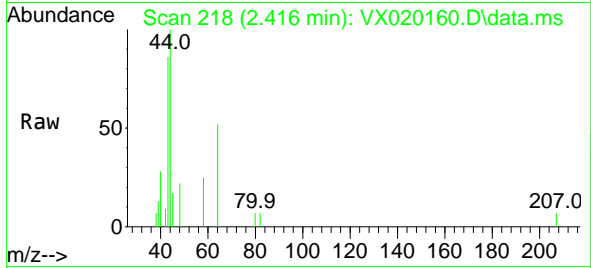




#16  
 Acetone  
 Concen: 0.84 ug/l  
 RT: 2.416 min Scan# 218  
 Delta R.T. 0.000 min  
 Lab File: VX020160.D  
 Acq: 19 Dec 2020 09:20

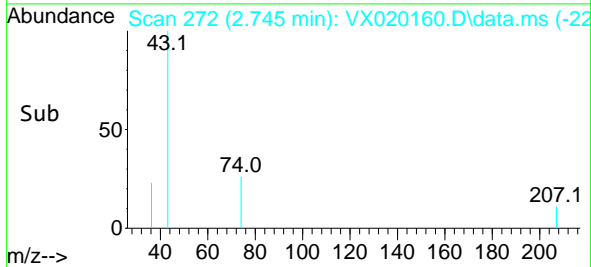
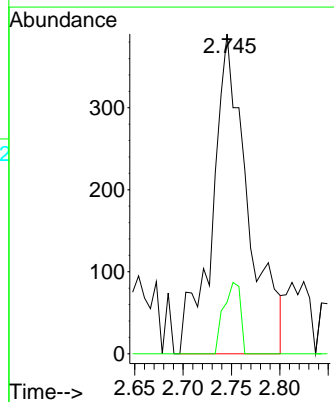
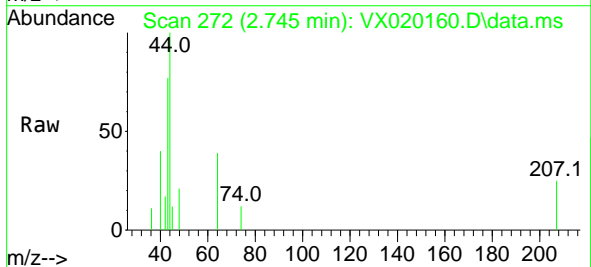
Instrument :  
 MSVOA\_X  
 ClientSampled :  
 STORAGE-BLANK-WATER-REF-5

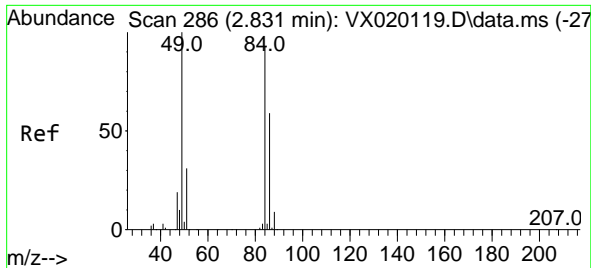
Tgt Ion: 43 Resp: 1557  
 Ion Ratio Lower Upper  
 43 100  
 58 29.2 27.8 41.8



#18  
 Methyl Acetate  
 Concen: 0.24 ug/l  
 RT: 2.745 min Scan# 272  
 Delta R.T. 0.000 min  
 Lab File: VX020160.D  
 Acq: 19 Dec 2020 09:20

Tgt Ion: 43 Resp: 996  
 Ion Ratio Lower Upper  
 43 100  
 74 10.4 21.9 32.9#

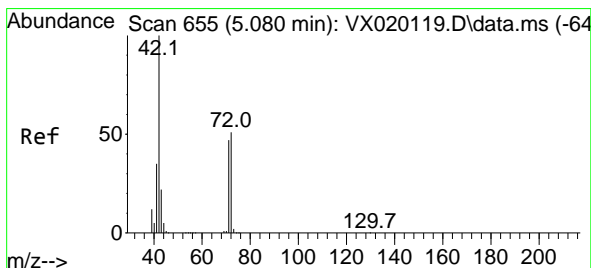
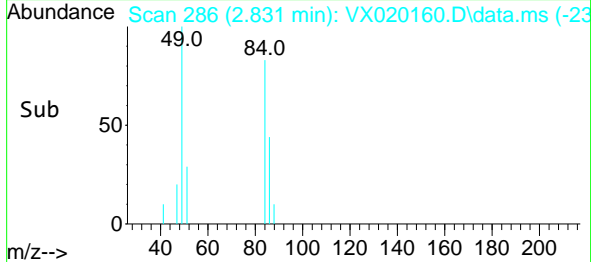
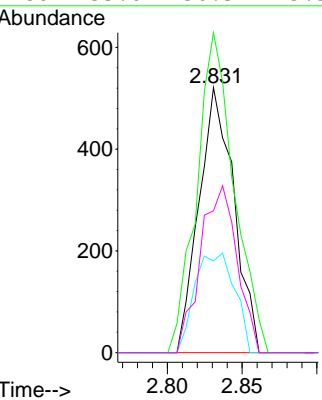
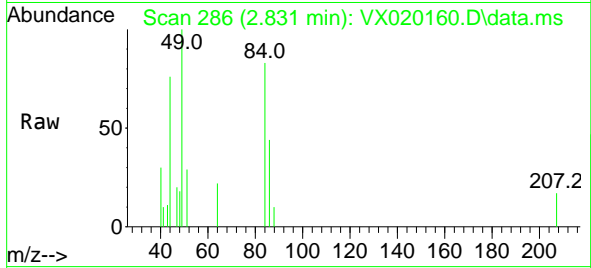




#20  
 Methylene Chloride  
 Concen: 0.20 ug/l  
 RT: 2.831 min Scan# 286  
 Delta R.T. -0.000 min  
 Lab File: VX020160.D  
 Acq: 19 Dec 2020 09:20

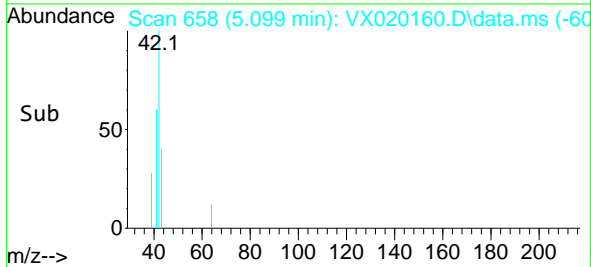
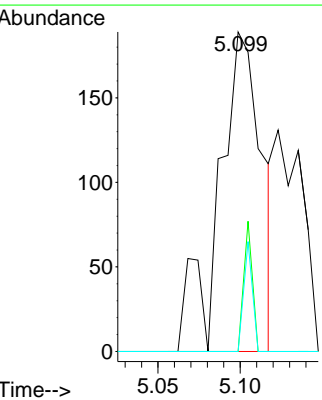
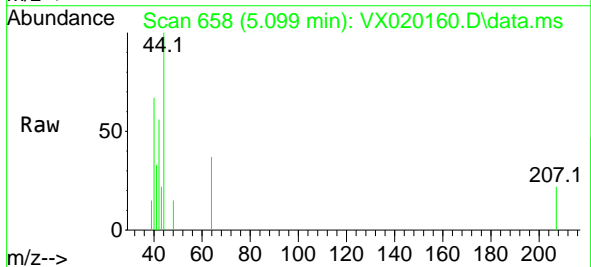
Instrument :  
 MSVOA\_X  
 ClientSampleId :  
 STORAGE-BLANK-WATER-REF-5

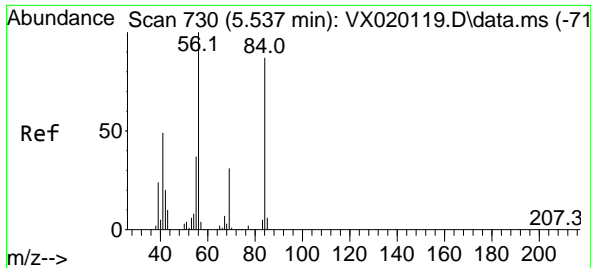
Tgt Ion	Resp	Lower	Upper
84	100		
49	120.7	88.6	132.8
51	34.5	27.0	40.6
86	53.6	50.3	75.5



#29  
 Tetrahydrofuran  
 Concen: 0.20 ug/l  
 RT: 5.099 min Scan# 658  
 Delta R.T. 0.019 min  
 Lab File: VX020160.D  
 Acq: 19 Dec 2020 09:20

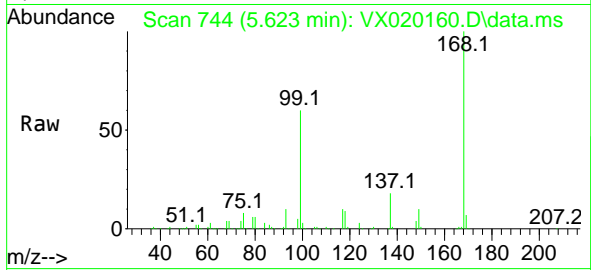
Tgt Ion	Resp	Lower	Upper
42	100		
72	8.2	41.7	62.5#
71	7.0	38.4	57.6#



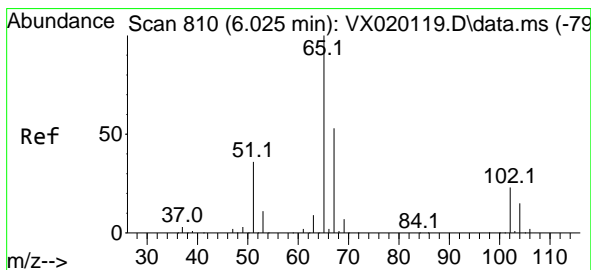
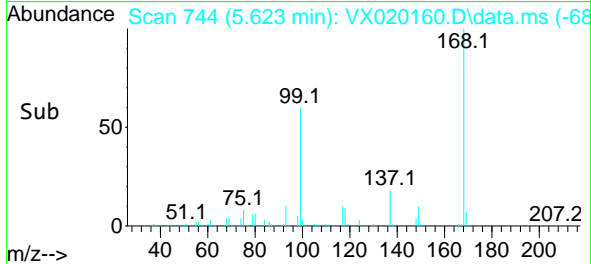
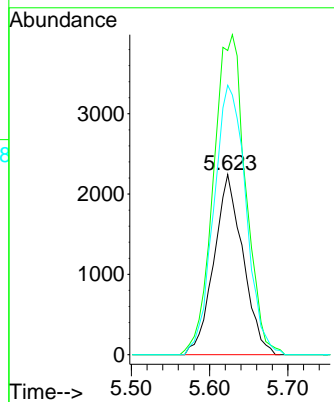


#31  
 Cyclohexane  
 Concen: 1.03 ug/l  
 RT: 5.623 min Scan# 744  
 Delta R.T. 0.086 min  
 Lab File: VX020160.D  
 Acq: 19 Dec 2020 09:20

**Instrument :**  
 MSVOA\_X  
**ClientSampled :**  
 STORAGE-BLANK-WATER-REF-5

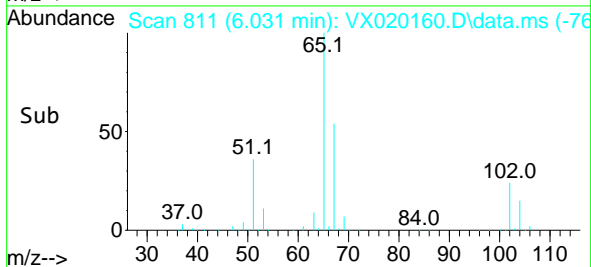
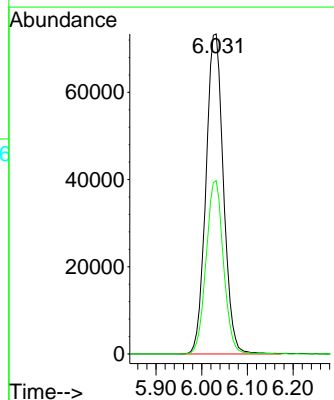
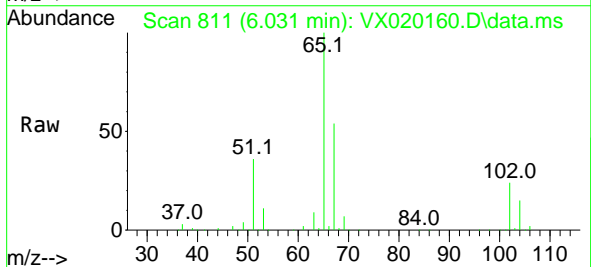


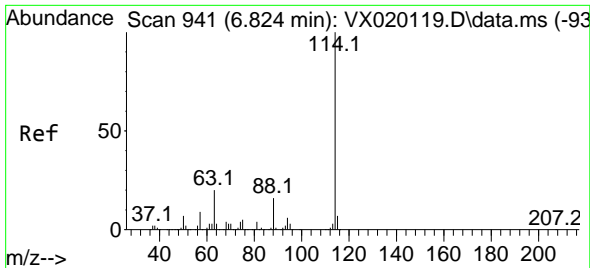
Tgt Ion: 56 Resp: 5787  
 Ion Ratio Lower Upper  
 56 100  
 69 168.8 25.3 37.9#  
 84 149.6 71.4 107.0#



#33  
 1,2-Dichloroethane-d4  
 Concen: 47.96 ug/l  
 RT: 6.031 min Scan# 811  
 Delta R.T. 0.006 min  
 Lab File: VX020160.D  
 Acq: 19 Dec 2020 09:20

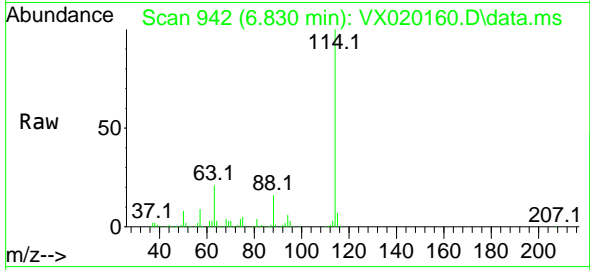
Tgt Ion: 65 Resp: 194975  
 Ion Ratio Lower Upper  
 65 100  
 67 53.5 0.0 105.4



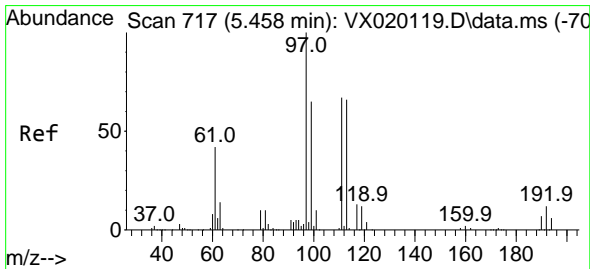
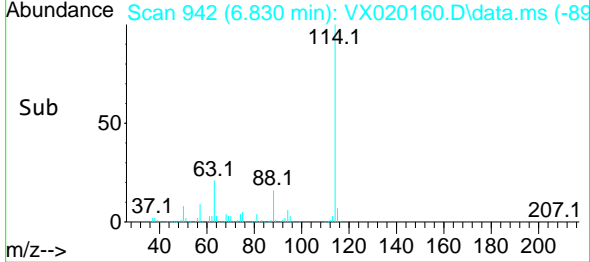
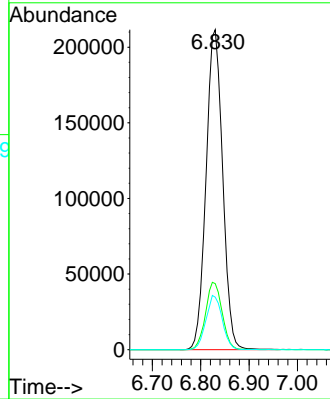


#34  
 1,4-Difluorobenzene  
 Concen: 50.00 ug/l  
 RT: 6.830 min Scan# 942  
 Delta R.T. 0.006 min  
 Lab File: VX020160.D  
 Acq: 19 Dec 2020 09:20

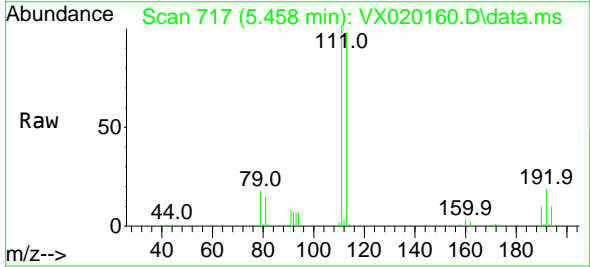
Instrument :  
 MSVOA\_X  
 ClientSampleId :  
 STORAGE-BLANK-WATER-REF-5



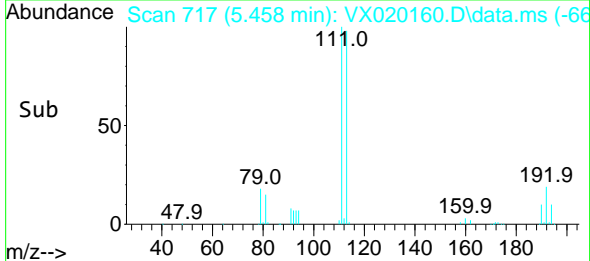
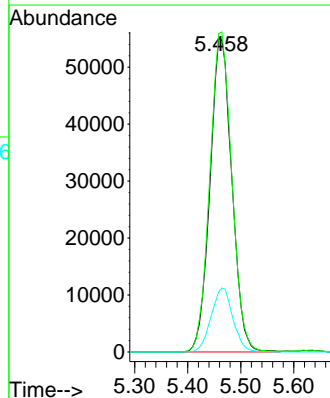
Tgt Ion:114 Resp: 503857  
 Ion Ratio Lower Upper  
 114 100  
 63 20.7 0.0 40.8  
 88 16.4 0.0 32.8



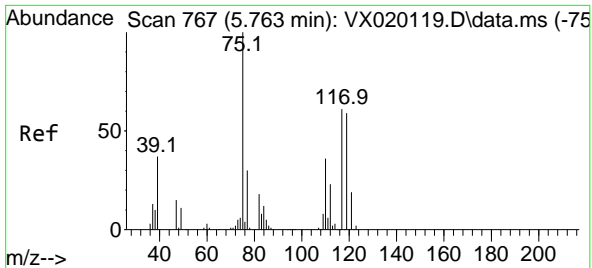
#35  
 Dibromofluoromethane  
 Concen: 48.90 ug/l  
 RT: 5.458 min Scan# 717  
 Delta R.T. 0.000 min  
 Lab File: VX020160.D  
 Acq: 19 Dec 2020 09:20



Tgt Ion:113 Resp: 157604  
 Ion Ratio Lower Upper  
 113 100  
 111 102.8 81.9 122.9  
 192 20.3 16.7 25.1



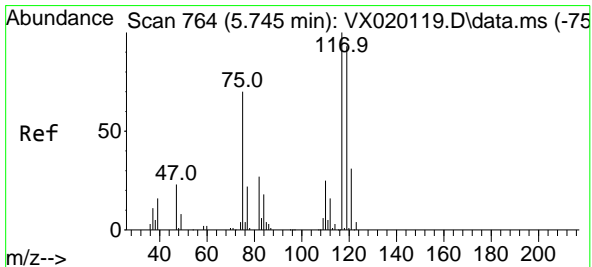
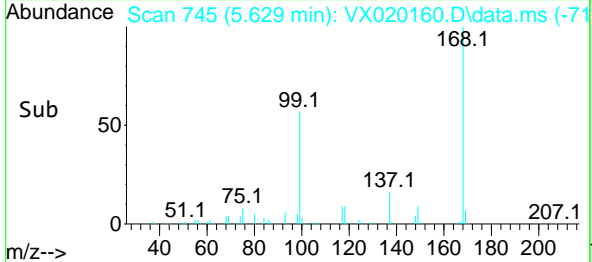
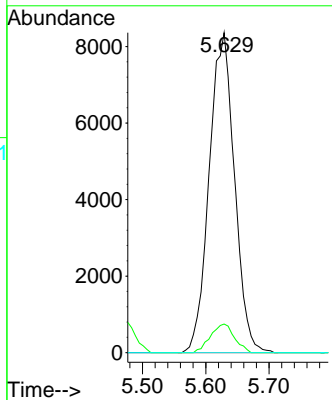
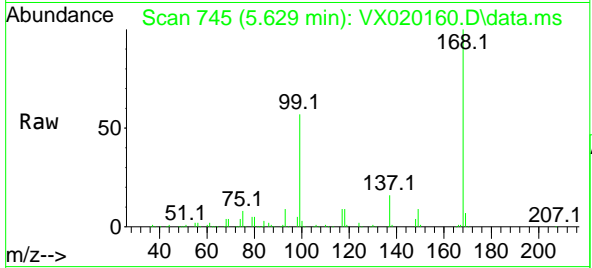




#36  
 1,1-Dichloropropene  
 Concen: 4.66 ug/l  
 RT: 5.629 min Scan# 745  
 Delta R.T. -0.134 min  
 Lab File: VX020160.D  
 Acq: 19 Dec 2020 09:20

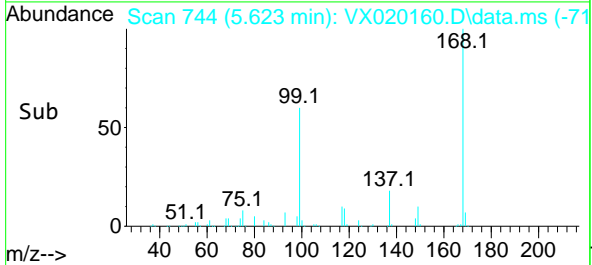
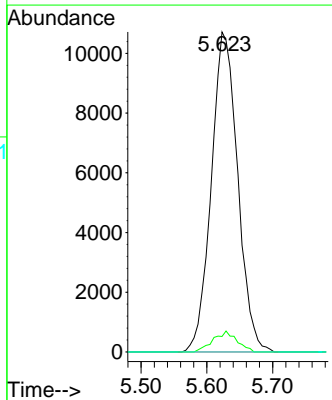
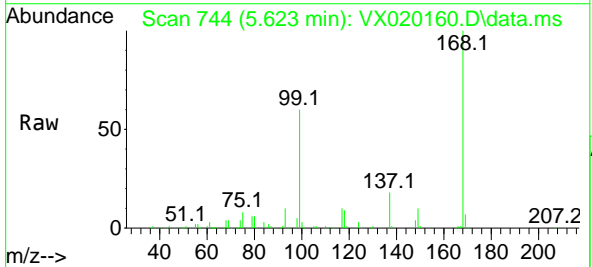
Instrument :  
 MSVOA\_X  
 ClientSampleId :  
 STORAGE-BLANK-WATER-REF-5

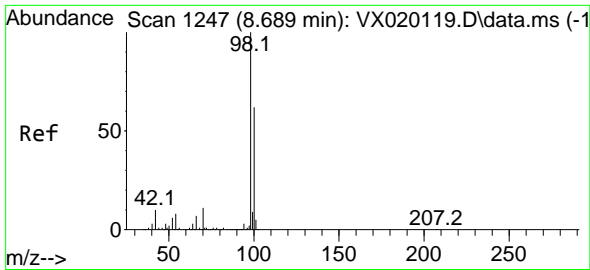
Tgt Ion	Resp	Lower	Upper
75	100		
110	8.5	18.1	54.4#
77	0.0	25.3	37.9#



#38  
 Carbon Tetrachloride  
 Concen: 6.32 ug/l  
 RT: 5.623 min Scan# 744  
 Delta R.T. -0.122 min  
 Lab File: VX020160.D  
 Acq: 19 Dec 2020 09:20

Tgt Ion	Resp	Lower	Upper
117	100		
119	4.9	76.2	114.2#
121	0.0	24.8	37.2#

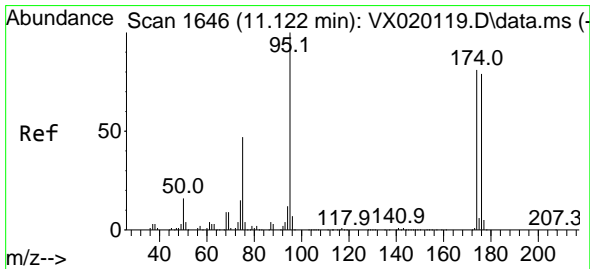
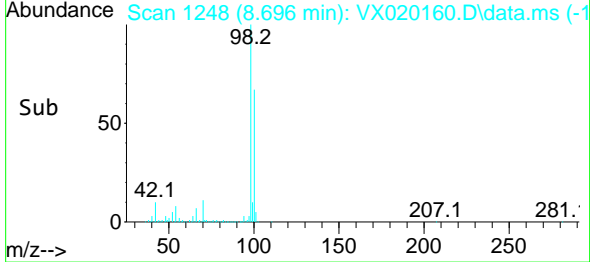
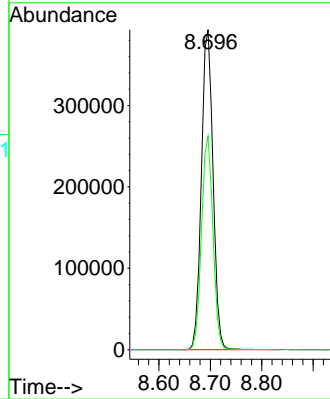
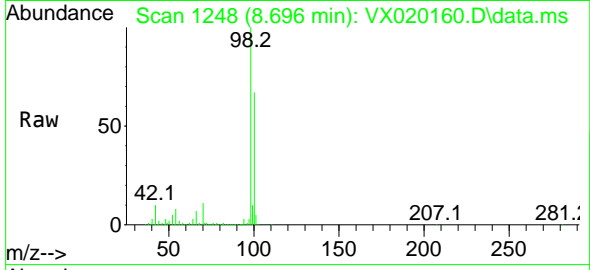




#50  
 Toluene-d8  
 Concen: 49.66 ug/l  
 RT: 8.696 min Scan# 1248  
 Delta R.T. 0.007 min  
 Lab File: VX020160.D  
 Acq: 19 Dec 2020 09:20

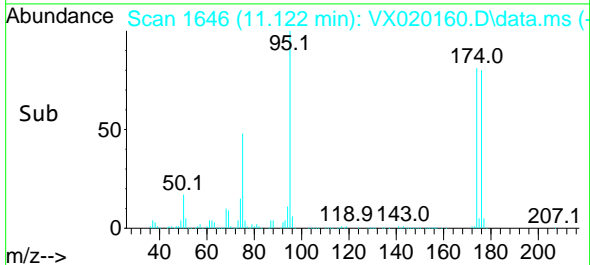
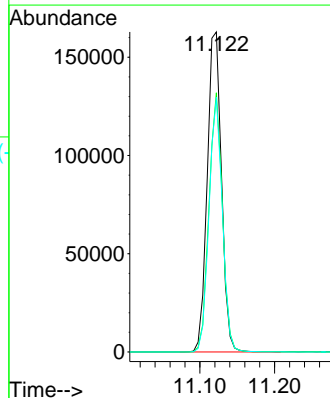
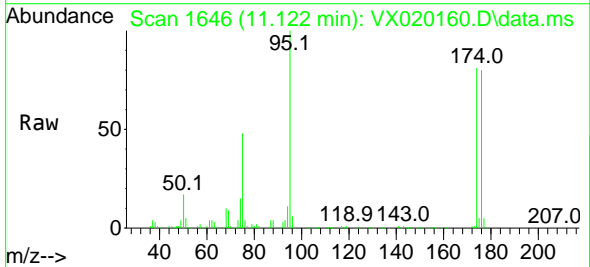
**Instrument :**  
 MSVOA\_X  
**ClientSampled :**  
 STORAGE-BLANK-WATER-REF-5

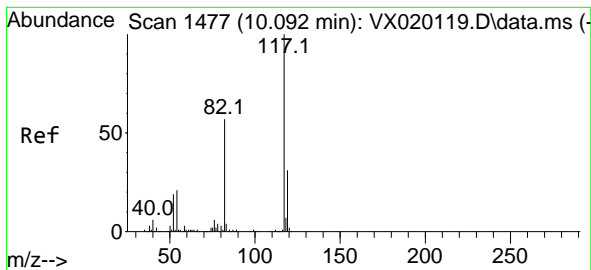
Tgt Ion: 98 Resp: 616072  
 Ion Ratio Lower Upper  
 98 100  
 100 65.6 51.9 77.9



#62  
 4-Bromofluorobenzene  
 Concen: 45.41 ug/l  
 RT: 11.122 min Scan# 1646  
 Delta R.T. 0.000 min  
 Lab File: VX020160.D  
 Acq: 19 Dec 2020 09:20

Tgt Ion: 95 Resp: 215625  
 Ion Ratio Lower Upper  
 95 100  
 174 76.4 0.0 154.6  
 176 74.5 0.0 155.8

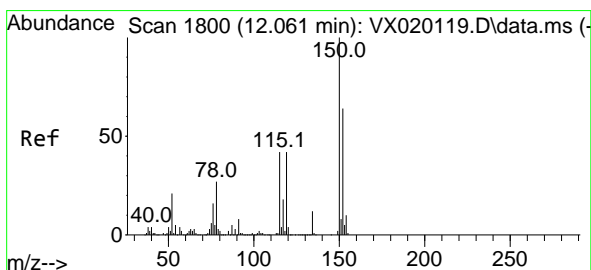
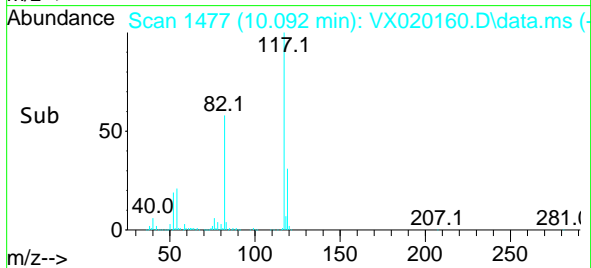
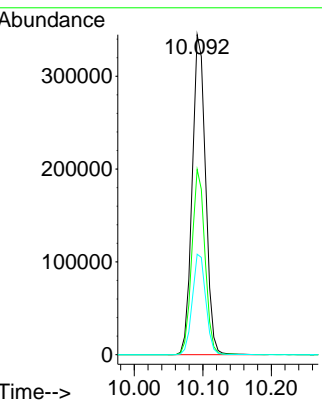
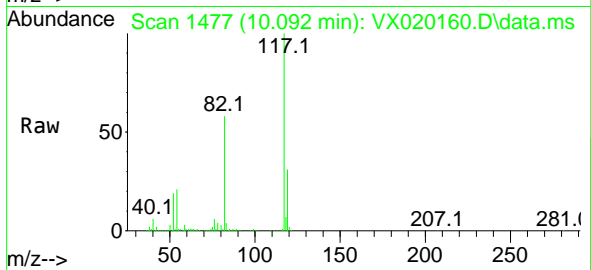




#63  
 Chlorobenzene-d5  
 Concen: 50.00 ug/l  
 RT: 10.092 min Scan# 1477  
 Delta R.T. -0.000 min  
 Lab File: VX020160.D  
 Acq: 19 Dec 2020 09:20

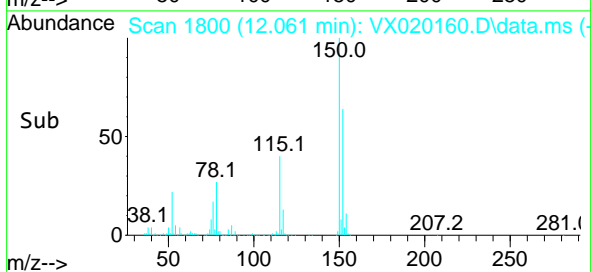
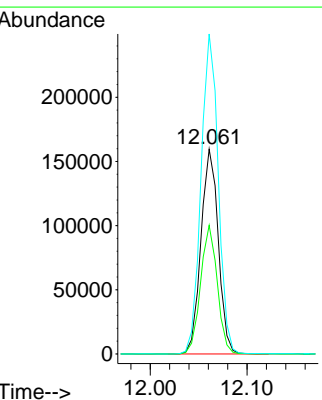
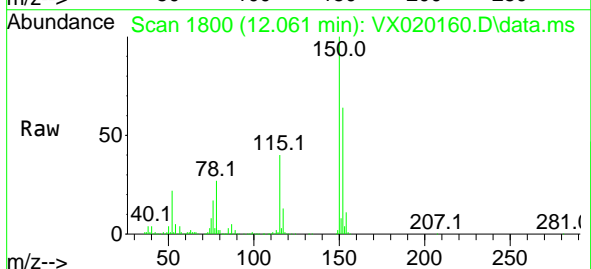
**Instrument :**  
 MSVOA\_X  
**ClientSampled :**  
 STORAGE-BLANK-WATER-REF-5

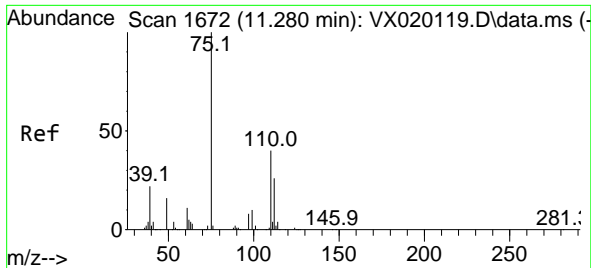
Tgt Ion	Resp	Lower	Upper
117	468726		
117	100		
82	57.9	47.4	71.2
119	31.4	26.6	39.8



#72  
 1,4-Dichlorobenzene-d4  
 Concen: 50.00 ug/l  
 RT: 12.061 min Scan# 1800  
 Delta R.T. -0.000 min  
 Lab File: VX020160.D  
 Acq: 19 Dec 2020 09:20

Tgt Ion	Resp	Lower	Upper
152	198406		
152	100		
115	60.5	41.1	123.3
150	155.8	0.0	349.0

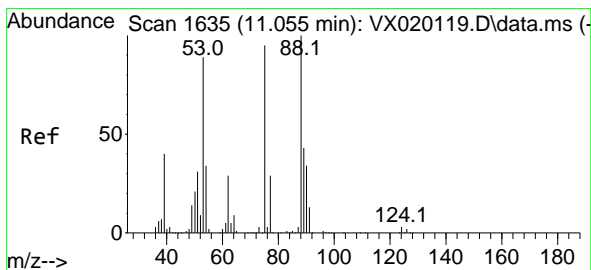
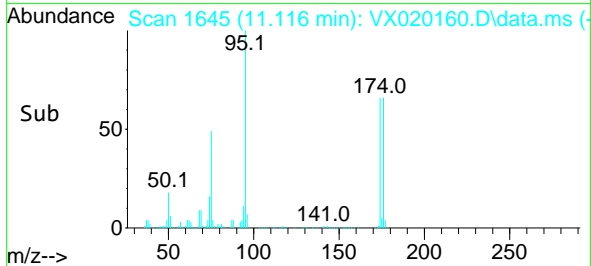
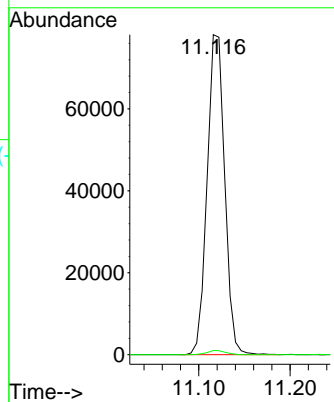
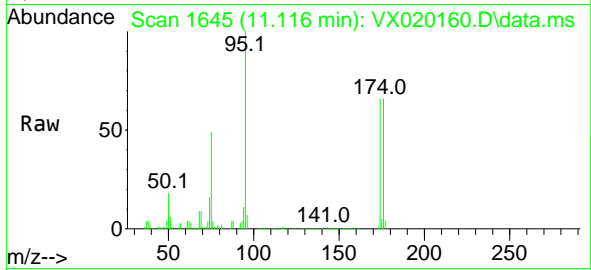




#76  
 1,2,3-Trichloropropane  
 Concen: 21.29 ug/l  
 RT: 11.116 min Scan# 1645  
 Delta R.T. -0.164 min  
 Lab File: VX020160.D  
 Acq: 19 Dec 2020 09:20

**Instrument :**  
 MSVOA\_X  
**ClientSampled :**  
 STORAGE-BLANK-WATER-REF-5

Tgt Ion: 75 Resp: 104042  
 Ion Ratio Lower Upper  
 75 100  
 77 1.4 19.1 57.5#



#81  
 trans-1,4-Dichloro-2-butene  
 Concen: 63.16 ug/l  
 RT: 11.116 min Scan# 1645  
 Delta R.T. 0.061 min  
 Lab File: VX020160.D  
 Acq: 19 Dec 2020 09:20

Tgt Ion: 75 Resp: 104042  
 Ion Ratio Lower Upper  
 75 100  
 53 0.1 74.5 111.7#  
 89 0.0 37.9 56.9#

