

Data Path : Z:\voasrv\HPCHEM1\MSVOA_X\Data\VX121824\
 Data File : VX044382.D
 Acq On : 18 Dec 2024 14:48
 Operator : JC/MD
 Sample : P5281-08
 Misc : 5.0mL/MSVOA_X/WATER
 ALS Vial : 9 Sample Multiplier: 1

Instrument :
 MSVOA_X
 ClientSampleId :
 FB02-20241213

Quant Time: Dec 19 00:46:25 2024
 Quant Method : Z:\voasrv\HPCHEM1\MSVOA_X\Method\82X121124W.M
 Quant Title : SW846 8260
 QLast Update : Thu Dec 12 04:28:14 2024
 Response via : Initial Calibration

Compound	R.T.	QIon	Response	Conc	Units	Dev(Min)

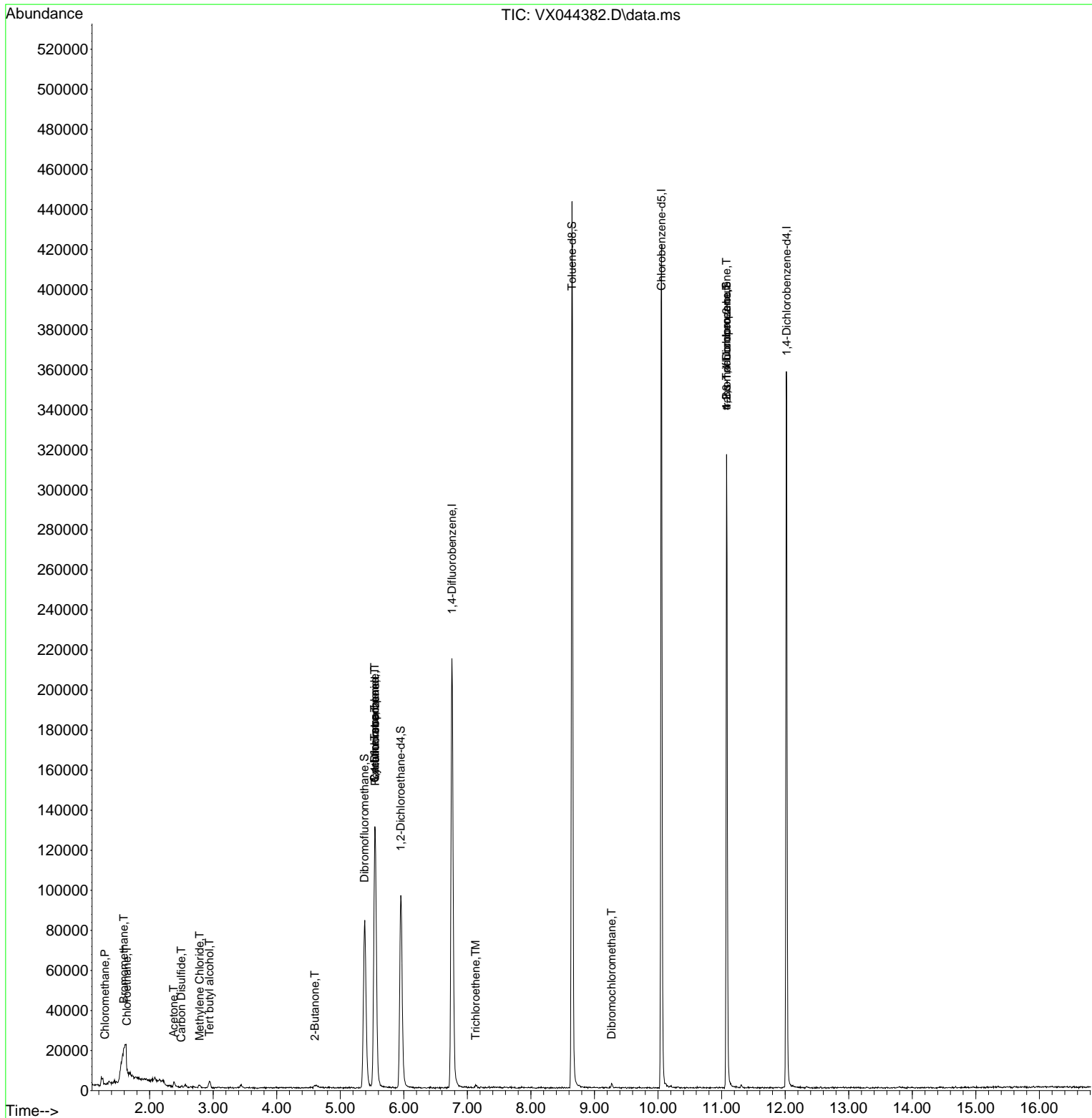
Internal Standards						
1) Pentafluorobenzene	5.550	168	120337	50.000	ug/l	0.00
34) 1,4-Difluorobenzene	6.757	114	217882	50.000	ug/l	0.00
63) Chlorobenzene-d5	10.055	117	185612	50.000	ug/l	0.00
72) 1,4-Dichlorobenzene-d4	12.024	152	75075	50.000	ug/l	0.00
System Monitoring Compounds						
33) 1,2-Dichloroethane-d4	5.952	65	94483	44.781	ug/l	0.00
Spiked Amount	50.000	Range	74 - 125	Recovery	=	89.560%
35) Dibromofluoromethane	5.379	113	71615	47.458	ug/l	0.00
Spiked Amount	50.000	Range	75 - 124	Recovery	=	94.920%
50) Toluene-d8	8.647	98	259965	51.063	ug/l	0.00
Spiked Amount	50.000	Range	86 - 113	Recovery	=	102.120%
62) 4-Bromofluorobenzene	11.079	95	82244	46.232	ug/l	0.00
Spiked Amount	50.000	Range	77 - 121	Recovery	=	92.460%
Target Compounds						
						Qvalue
3) Chloromethane	1.294	50	435	0.244	ug/l #	42
5) Bromomethane	1.593	94	332	0.252	ug/l #	68
6) Chloroethane	1.642	64	442	0.383	ug/l #	41
11) Tert butyl alcohol	2.940	59	1568	5.273	ug/l #	71
16) Acetone	2.380	43	2274	2.644	ug/l #	89
17) Carbon Disulfide	2.495	76	518	0.202	ug/l #	75
20) Methylene Chloride	2.788	84	534	0.331	ug/l #	82
25) 2-Butanone	4.599	43	1116	0.913	ug/l	94
31) Cyclohexane	5.544	56	3082	1.353	ug/l #	28
36) 1,1-Dichloropropene	5.544	75	10320	5.291	ug/l #	50
38) Carbon Tetrachloride	5.544	117	13531	6.443	ug/l #	16
44) Trichloroethene	7.129	130	584	0.395	ug/l	88
60) Dibromochloromethane	9.269	129	29	1.250	ug/l #	11
76) 1,2,3-Trichloropropane	11.079	75	46120	27.514	ug/l #	36
81) trans-1,4-Dichloro-2-b...	11.079	75	46120	75.623	ug/l #	4

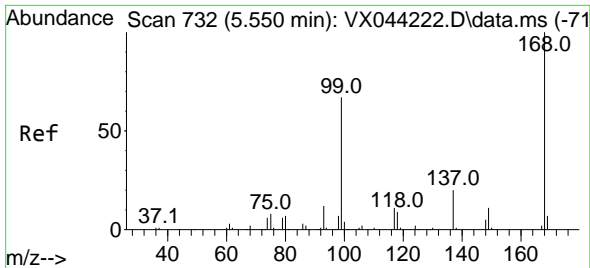
(#) = qualifier out of range (m) = manual integration (+) = signals summed

Data Path : Z:\voasrv\HPCHEM1\MSVOA_X\Data\VX121824\
 Data File : VX044382.D
 Acq On : 18 Dec 2024 14:48
 Operator : JC/MD
 Sample : P5281-08
 Misc : 5.0mL/MSVOA_X/WATER
 ALS Vial : 9 Sample Multiplier: 1

Instrument :
 MSVOA_X
ClientSampleId :
 FB02-20241213

Quant Time: Dec 19 00:46:25 2024
 Quant Method : Z:\voasrv\HPCHEM1\MSVOA_X\Method\82X121124W.M
 Quant Title : SW846 8260
 QLast Update : Thu Dec 12 04:28:14 2024
 Response via : Initial Calibration

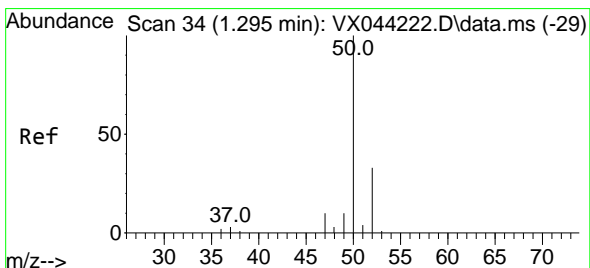
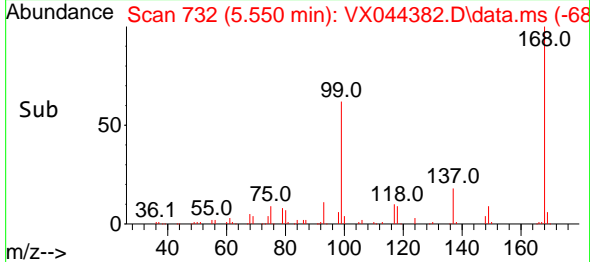
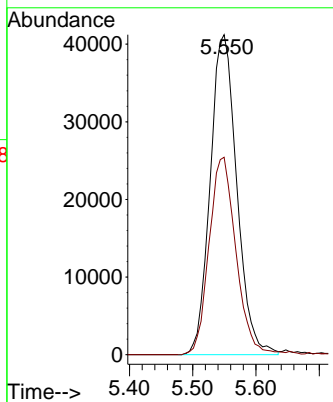
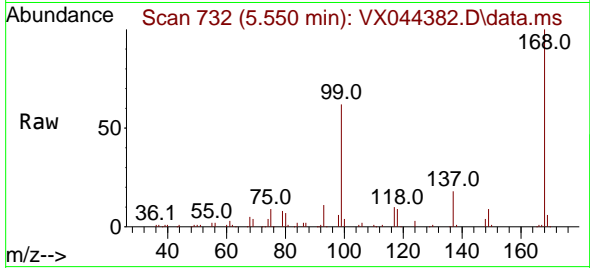




#1
 Pentafluorobenzene
 Concen: 50.000 ug/l
 RT: 5.550 min Scan# 71
 Delta R.T. -0.000 min
 Lab File: VX044382.D
 Acq: 18 Dec 2024 14:48

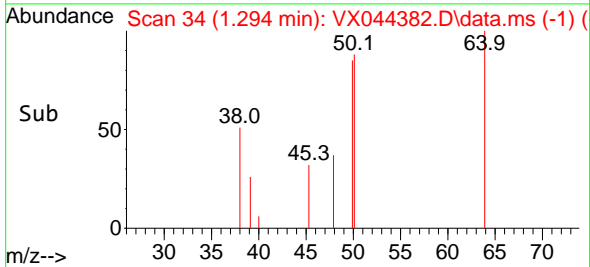
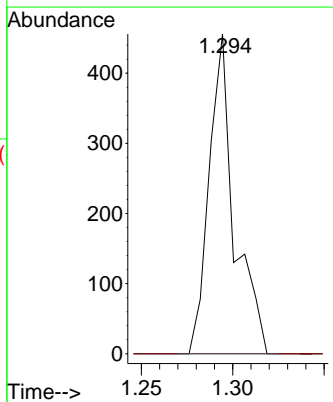
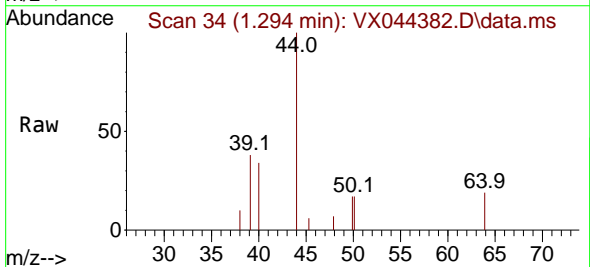
Instrument :
 MSVOA_X
 ClientSampleId :
 FB02-20241213

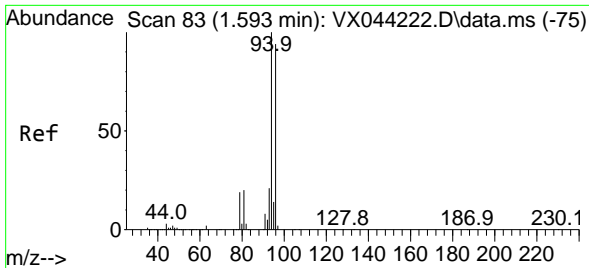
Tgt Ion:168 Resp: 120337
 Ion Ratio Lower Upper
 168 100
 99 61.7 53.4 80.0



#3
 Chloromethane
 Concen: 0.244 ug/l
 RT: 1.294 min Scan# 34
 Delta R.T. -0.000 min
 Lab File: VX044382.D
 Acq: 18 Dec 2024 14:48

Tgt Ion: 50 Resp: 435
 Ion Ratio Lower Upper
 50 100
 52 0.0 26.5 39.7#

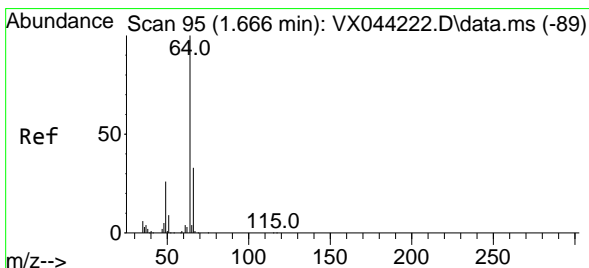
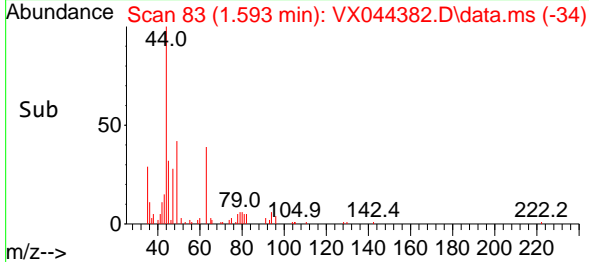
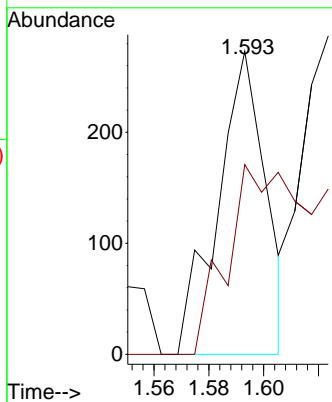
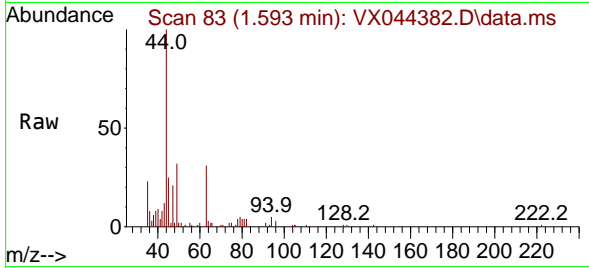




#5
 Bromomethane
 Concen: 0.252 ug/l
 RT: 1.593 min Scan# 81
 Delta R.T. -0.000 min
 Lab File: VX044382.D
 Acq: 18 Dec 2024 14:48

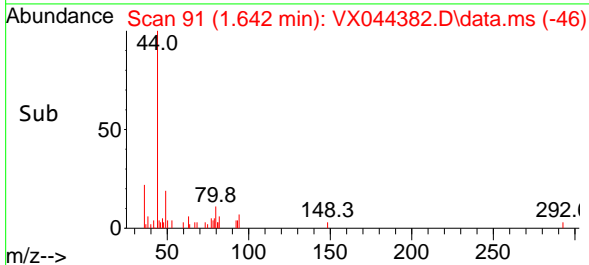
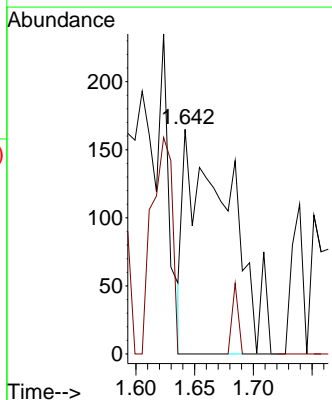
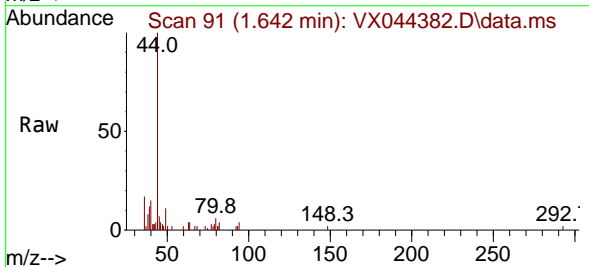
Instrument :
 MSVOA_X
 ClientSampleId :
 FB02-20241213

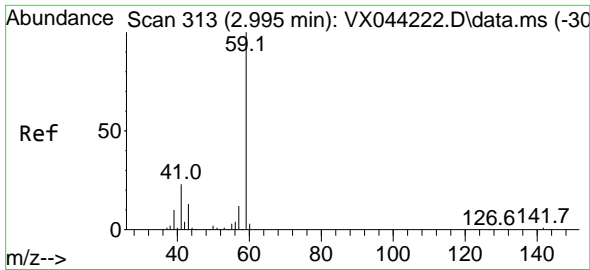
Tgt Ion: 94 Resp: 332
 Ion Ratio Lower Upper
 94 100
 96 62.6 74.9 112.3#



#6
 Chloroethane
 Concen: 0.383 ug/l
 RT: 1.642 min Scan# 91
 Delta R.T. -0.025 min
 Lab File: VX044382.D
 Acq: 18 Dec 2024 14:48

Tgt Ion: 64 Resp: 442
 Ion Ratio Lower Upper
 64 100
 66 0.0 26.6 39.8#

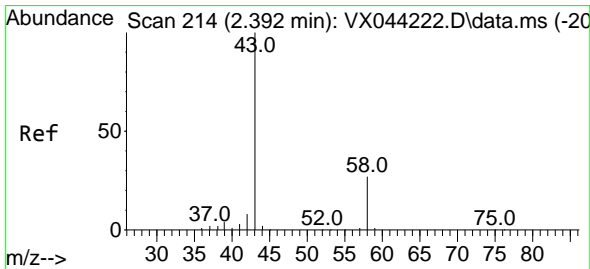
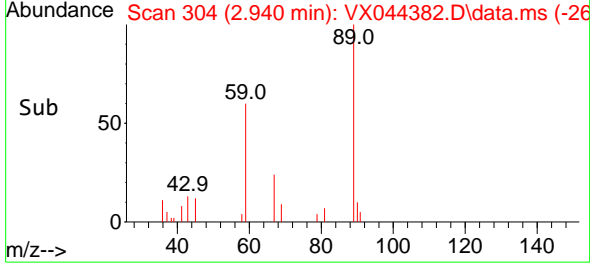
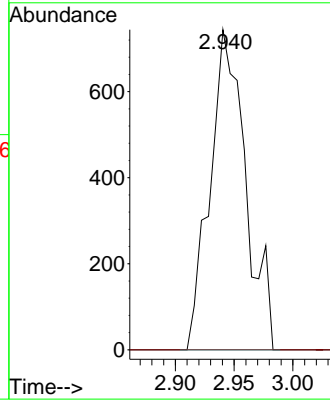
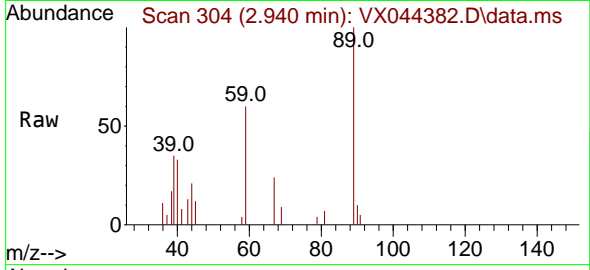




#11
 Tert butyl alcohol
 Concen: 5.273 ug/l
 RT: 2.940 min Scan# 304
 Delta R.T. -0.055 min
 Lab File: VX044382.D
 Acq: 18 Dec 2024 14:48

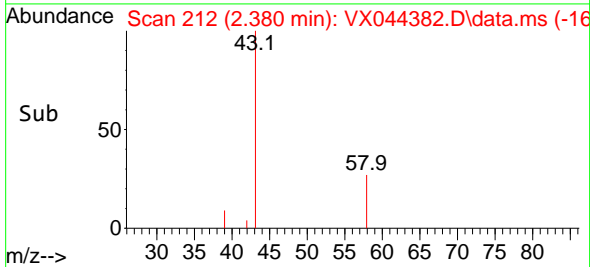
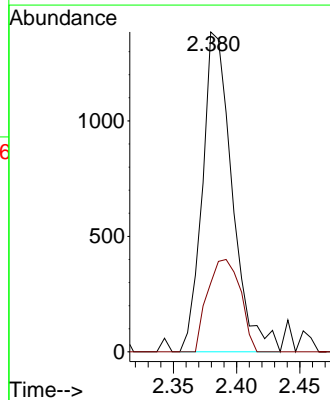
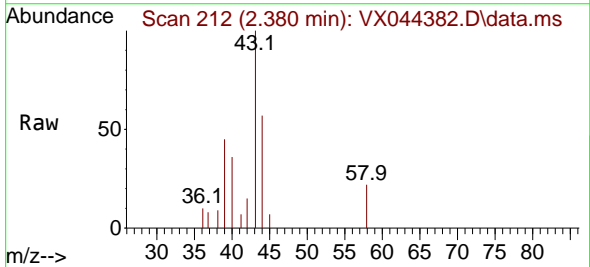
Instrument : MSVOA_X
 Client Sample Id : FB02-20241213

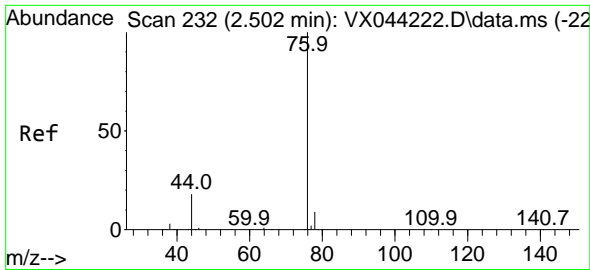
Tgt Ion: 59 Resp: 1568
 Ion Ratio Lower Upper
 59 100
 57 0.0 8.8 13.2#



#16
 Acetone
 Concen: 2.644 ug/l
 RT: 2.380 min Scan# 212
 Delta R.T. -0.012 min
 Lab File: VX044382.D
 Acq: 18 Dec 2024 14:48

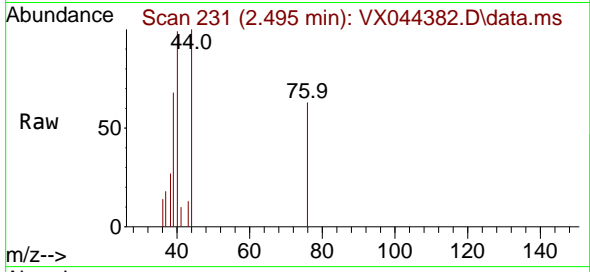
Tgt Ion: 43 Resp: 2274
 Ion Ratio Lower Upper
 43 100
 58 21.5 21.6 32.4#



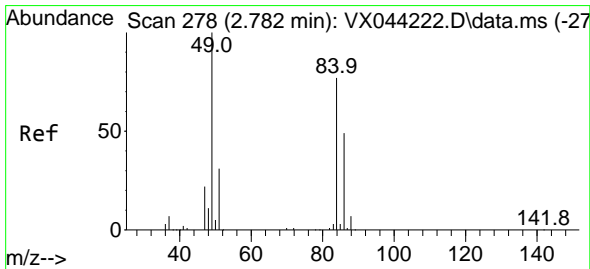
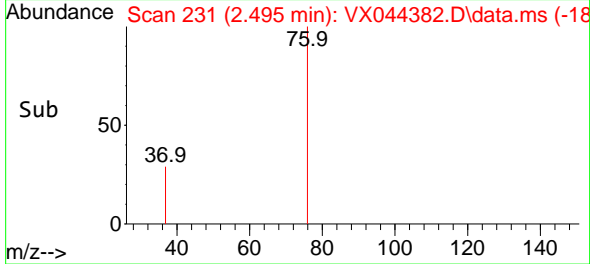
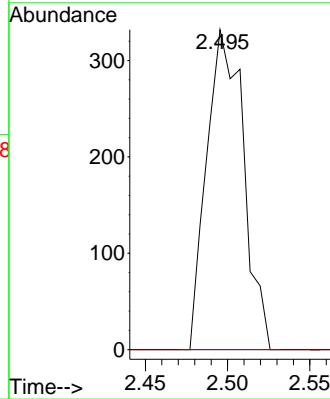


#17
 Carbon Disulfide
 Concen: 0.202 ug/l
 RT: 2.495 min Scan# 211
 Delta R.T. -0.006 min
 Lab File: VX044382.D
 Acq: 18 Dec 2024 14:48

Instrument : MSVOA_X
 ClientSampleId : FB02-20241213

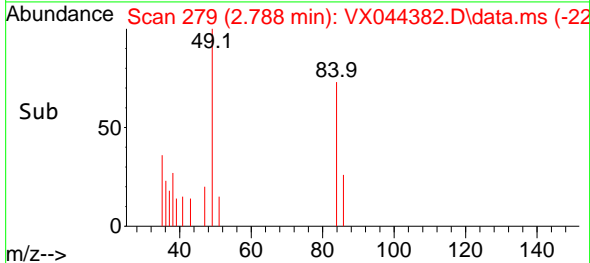
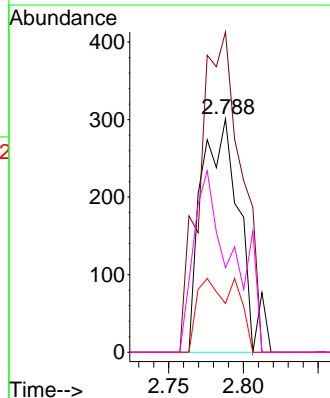
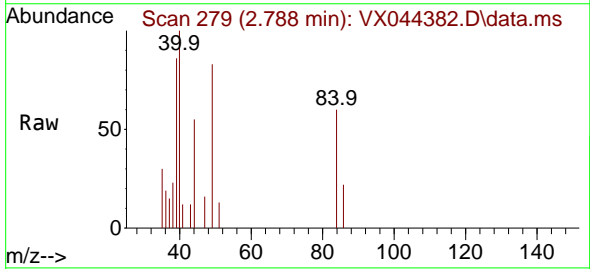


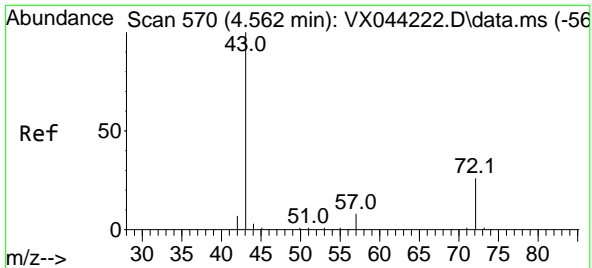
Tgt Ion: 76 Resp: 518
 Ion Ratio Lower Upper
 76 100
 78 0.0 7.4 11.0#



#20
 Methylene Chloride
 Concen: 0.331 ug/l
 RT: 2.788 min Scan# 279
 Delta R.T. 0.006 min
 Lab File: VX044382.D
 Acq: 18 Dec 2024 14:48

Tgt Ion: 84 Resp: 534
 Ion Ratio Lower Upper
 84 100
 49 137.2 104.2 156.4
 51 20.9 32.2 48.4#
 86 36.2 50.9 76.3#



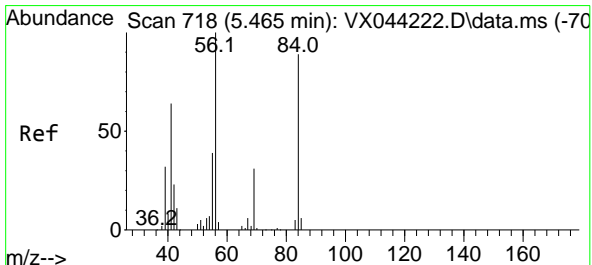
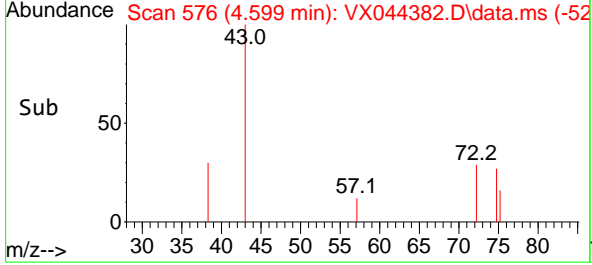
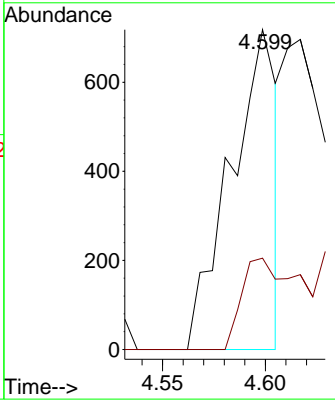
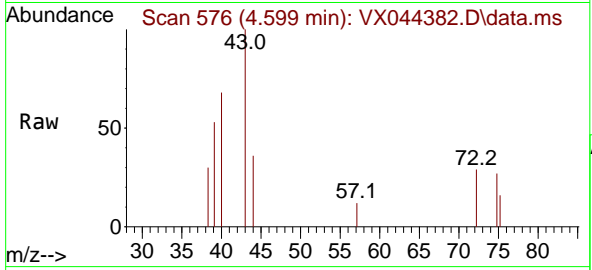


#25
 2-Butanone
 Concen: 0.913 ug/l
 RT: 4.599 min Scan# 51
 Delta R.T. 0.036 min
 Lab File: VX044382.D
 Acq: 18 Dec 2024 14:48

Instrument : MSVOA_X
 ClientSampleId : FB02-20241213

Tgt Ion: 43 Resp: 1116

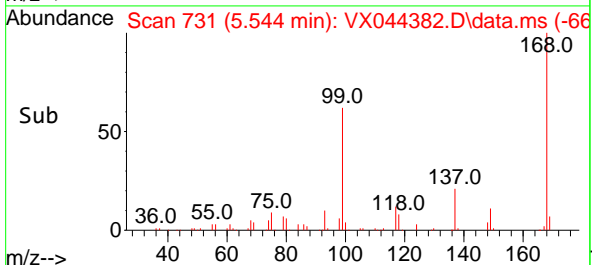
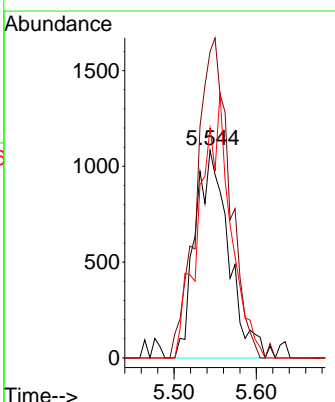
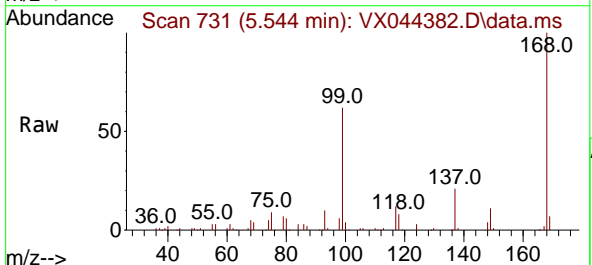
Ion	Ratio	Lower	Upper
43	100		
72	28.6	20.2	30.4

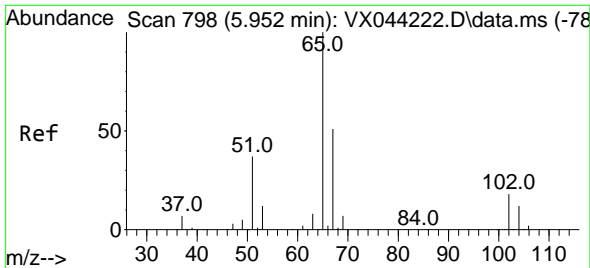


#31
 Cyclohexane
 Concen: 1.353 ug/l
 RT: 5.544 min Scan# 731
 Delta R.T. 0.079 min
 Lab File: VX044382.D
 Acq: 18 Dec 2024 14:48

Tgt Ion: 56 Resp: 3082

Ion	Ratio	Lower	Upper
56	100		
69	147.5	24.7	37.1#
84	110.8	71.0	106.6#

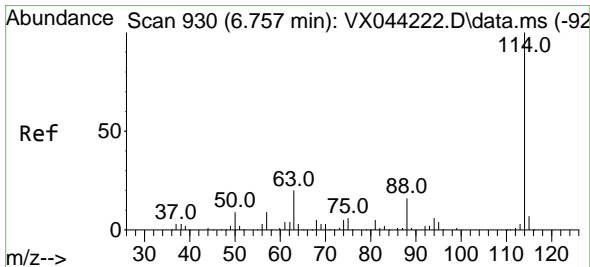
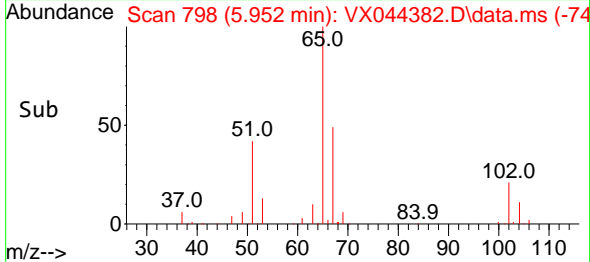
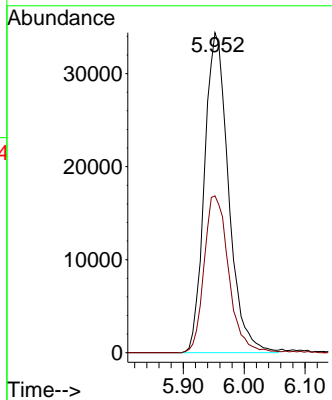
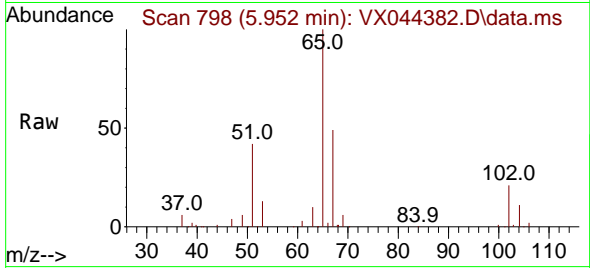




#33
 1,2-Dichloroethane-d4
 Concen: 44.781 ug/l
 RT: 5.952 min Scan# 798
 Delta R.T. -0.000 min
 Lab File: VX044382.D
 Acq: 18 Dec 2024 14:48

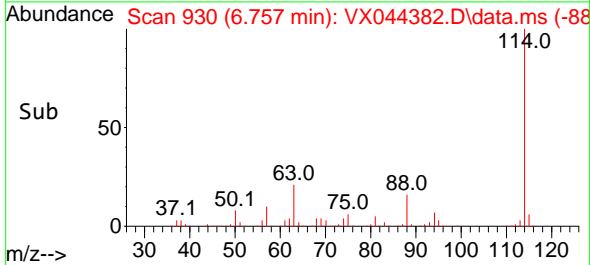
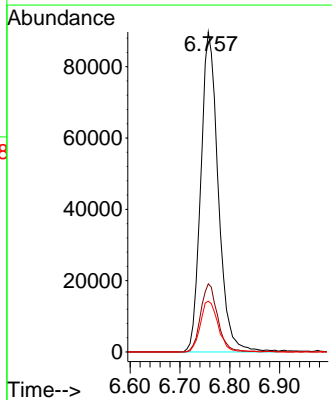
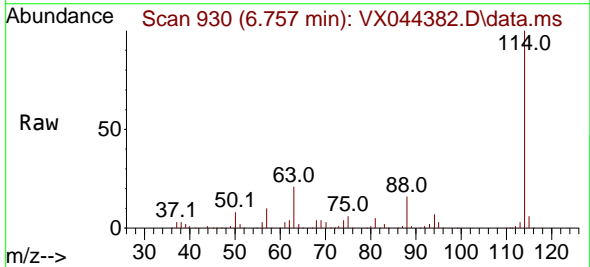
Instrument : MSVOA_X
 ClientSampleId : FB02-20241213

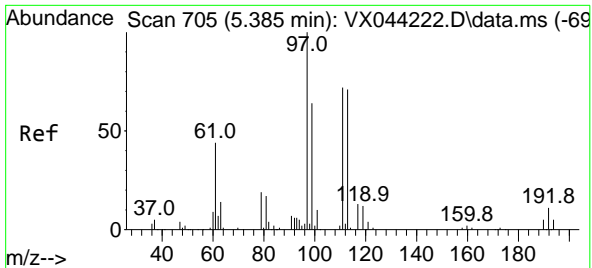
Tgt Ion	Resp	Ion Ratio	Lower	Upper
65	94483	100		
67		50.1	0.0	101.6



#34
 1,4-Difluorobenzene
 Concen: 50.000 ug/l
 RT: 6.757 min Scan# 930
 Delta R.T. -0.000 min
 Lab File: VX044382.D
 Acq: 18 Dec 2024 14:48

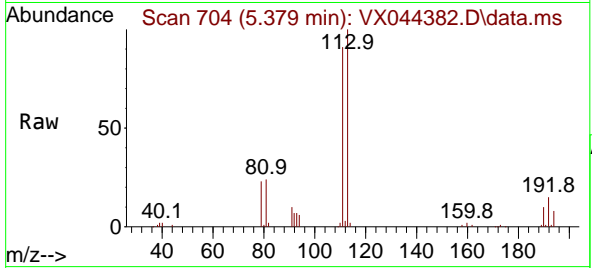
Tgt Ion	Resp	Ion Ratio	Lower	Upper
114	217882	100		
63		21.3	0.0	40.6
88		15.9	0.0	31.8



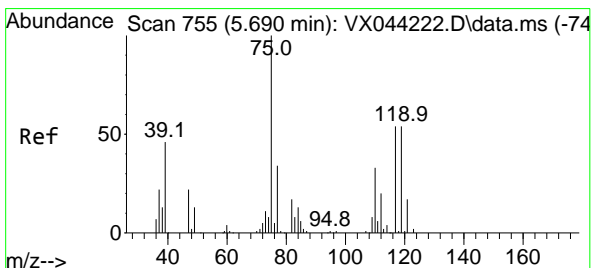
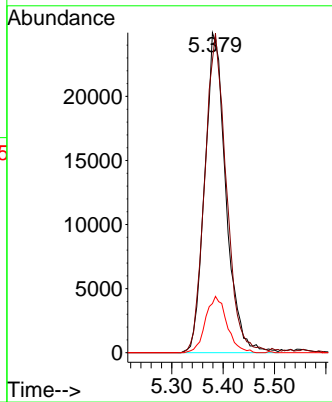
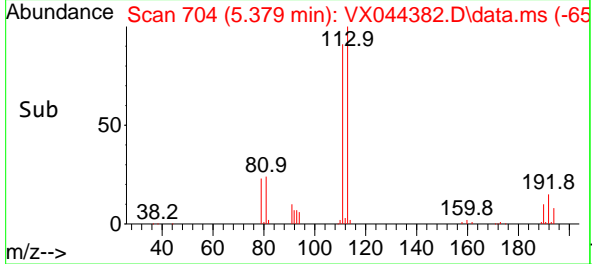


#35
 Dibromofluoromethane
 Concen: 47.458 ug/l
 RT: 5.379 min Scan# 704
 Delta R.T. -0.006 min
 Lab File: VX044382.D
 Acq: 18 Dec 2024 14:48

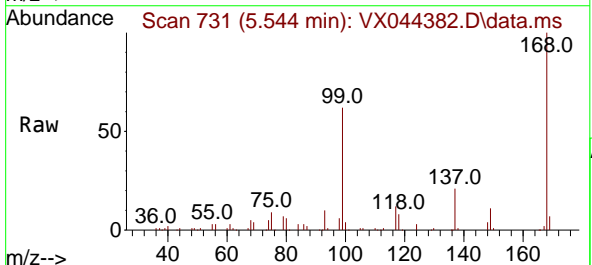
Instrument : MSVOA_X
 ClientSampleId : FB02-20241213



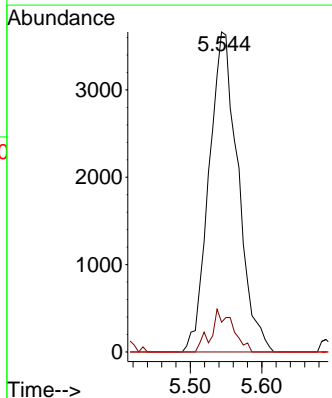
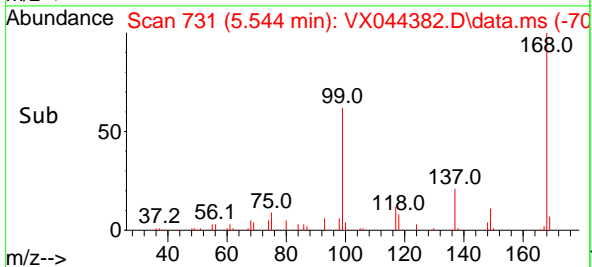
Tgt Ion: 113 Resp: 71615
 Ion Ratio Lower Upper
 113 100
 111 101.2 80.4 120.6
 192 17.7 13.3 19.9

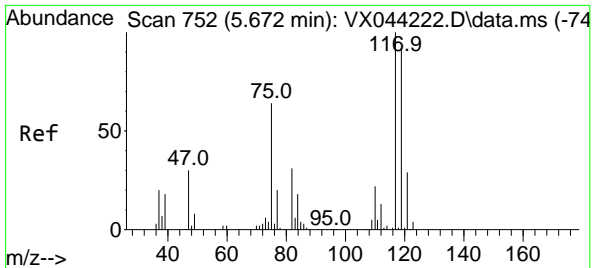


#36
 1,1-Dichloropropene
 Concen: 5.291 ug/l
 RT: 5.544 min Scan# 731
 Delta R.T. -0.146 min
 Lab File: VX044382.D
 Acq: 18 Dec 2024 14:48



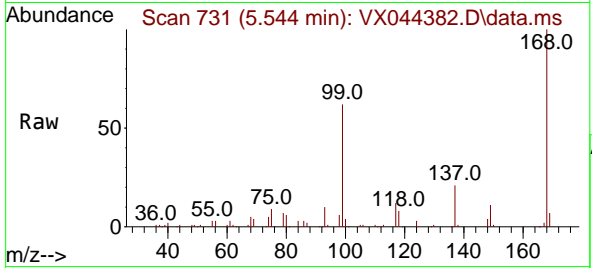
Tgt Ion: 75 Resp: 10320
 Ion Ratio Lower Upper
 75 100
 110 9.9 17.3 51.7#
 77 0.0 25.4 38.0#



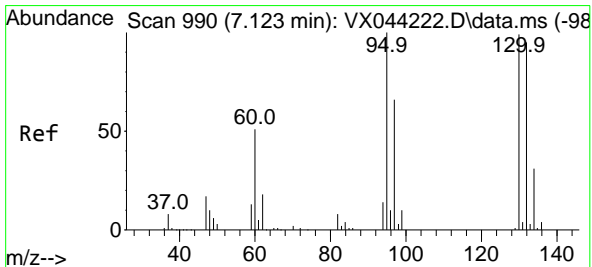
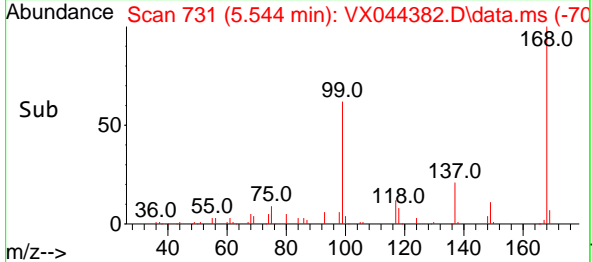
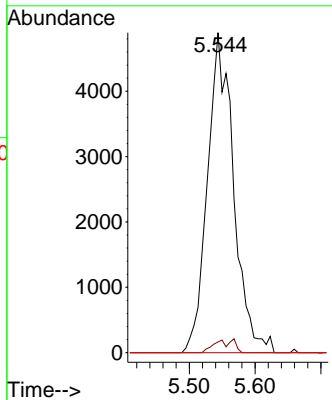


#38
 Carbon Tetrachloride
 Concen: 6.443 ug/l
 RT: 5.544 min Scan# 711
 Delta R.T. -0.128 min
 Lab File: VX044382.D
 Acq: 18 Dec 2024 14:48

Instrument : MSVOA_X
 ClientSampleId : FB02-20241213

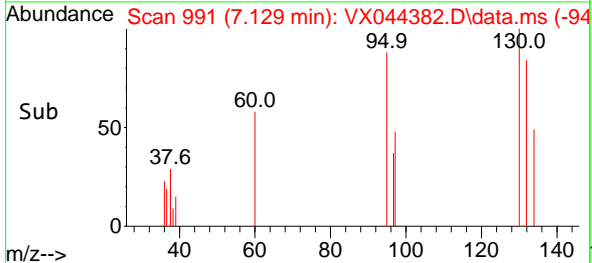
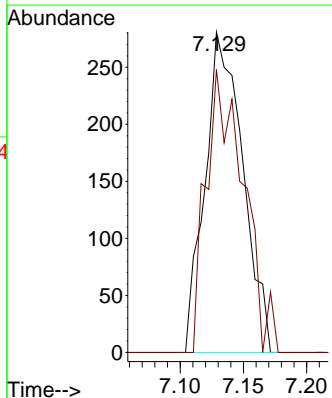
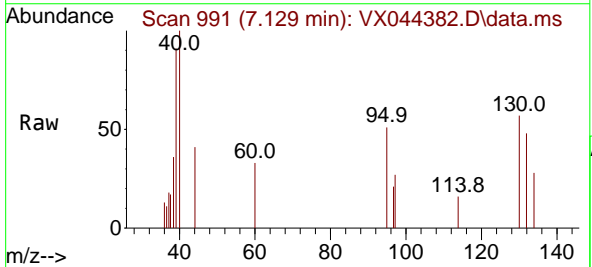


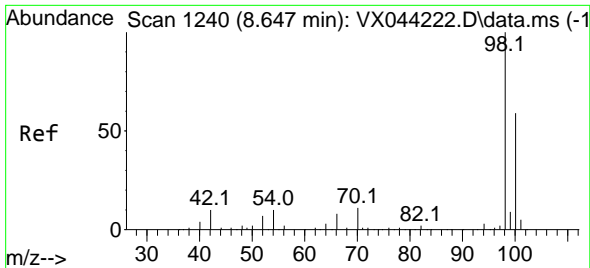
Tgt Ion:117 Resp: 13531
 Ion Ratio Lower Upper
 117 100
 119 3.4 74.2 111.4#
 121 0.0 23.0 34.6#



#44
 Trichloroethene
 Concen: 0.395 ug/l
 RT: 7.129 min Scan# 991
 Delta R.T. 0.006 min
 Lab File: VX044382.D
 Acq: 18 Dec 2024 14:48

Tgt Ion:130 Resp: 584
 Ion Ratio Lower Upper
 130 100
 95 88.3 0.0 201.4

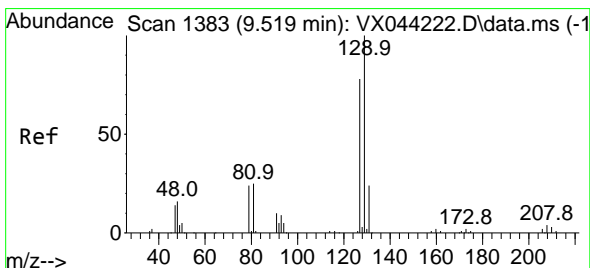
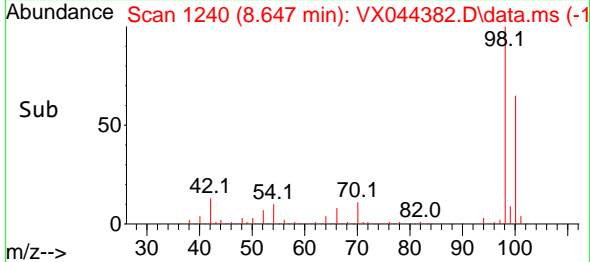
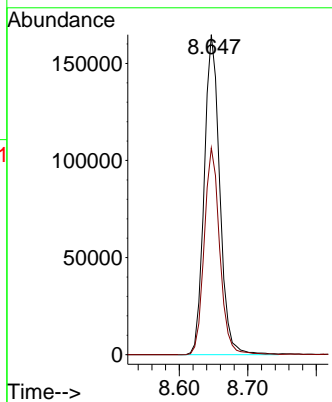
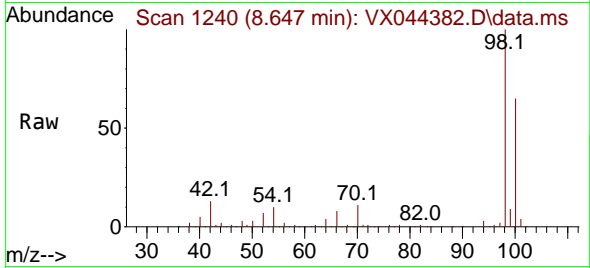




#50
 Toluene-d8
 Concen: 51.063 ug/l
 RT: 8.647 min Scan# 111
 Delta R.T. -0.000 min
 Lab File: VX044382.D
 Acq: 18 Dec 2024 14:48

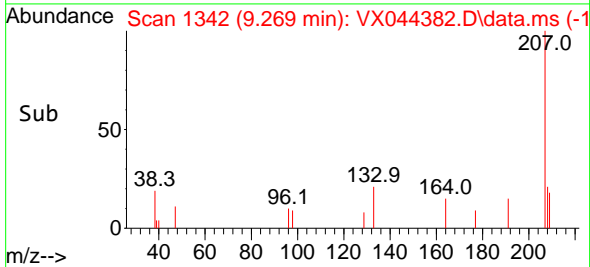
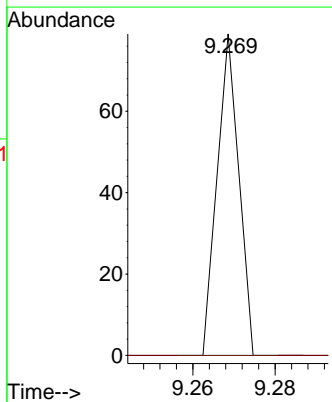
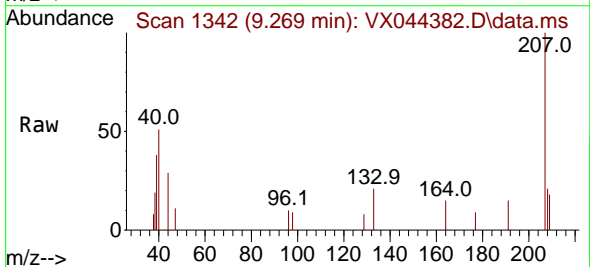
Instrument : MSVOA_X
 ClientSampleId : FB02-20241213

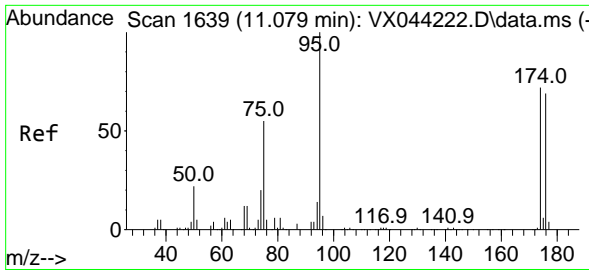
Tgt Ion: 98 Resp: 259965
 Ion Ratio Lower Upper
 98 100
 100 64.5 51.5 77.3



#60
 Dibromochloromethane
 Concen: 1.250 ug/l
 RT: 9.269 min Scan# 1342
 Delta R.T. -0.250 min
 Lab File: VX044382.D
 Acq: 18 Dec 2024 14:48

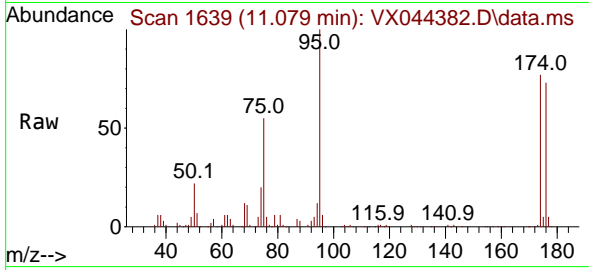
Tgt Ion: 129 Resp: 29
 Ion Ratio Lower Upper
 129 100
 127 0.0 38.5 115.3#



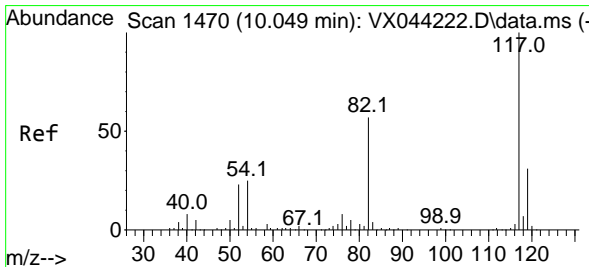
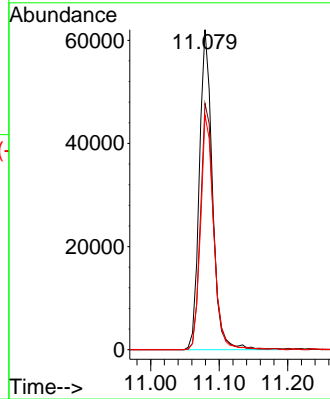
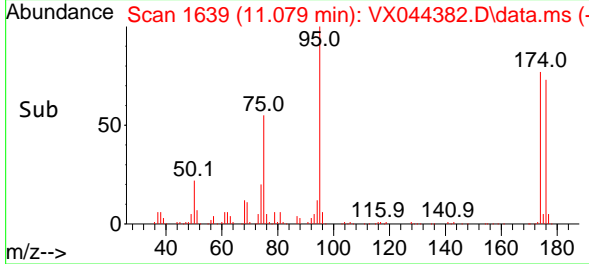


#62
 4-Bromofluorobenzene
 Concen: 46.232 ug/l
 RT: 11.079 min Scan# 1639
 Delta R.T. -0.000 min
 Lab File: VX044382.D
 Acq: 18 Dec 2024 14:48

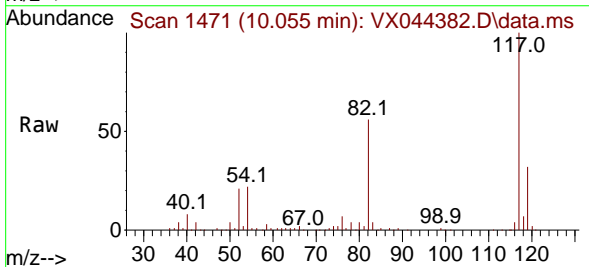
Instrument : MSVOA_X
 ClientSampleId : FB02-20241213



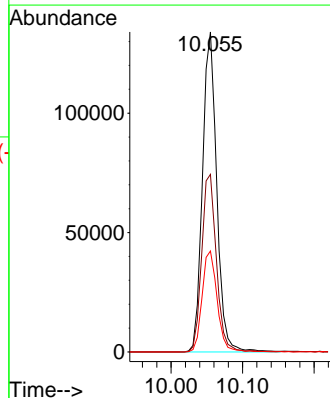
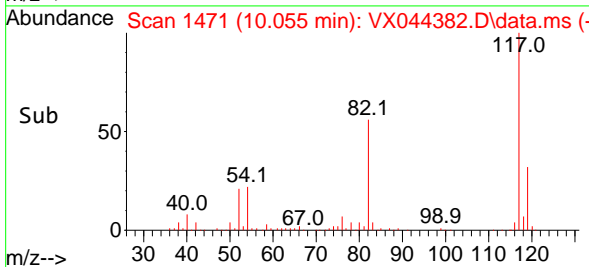
Tgt Ion: 95 Resp: 82244
 Ion Ratio Lower Upper
 95 100
 174 77.7 0.0 145.8
 176 74.0 0.0 137.8

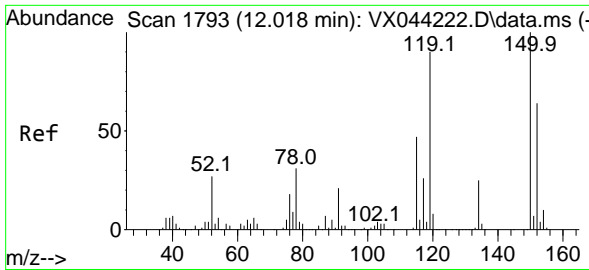


#63
 Chlorobenzene-d5
 Concen: 50.000 ug/l
 RT: 10.055 min Scan# 1471
 Delta R.T. 0.006 min
 Lab File: VX044382.D
 Acq: 18 Dec 2024 14:48



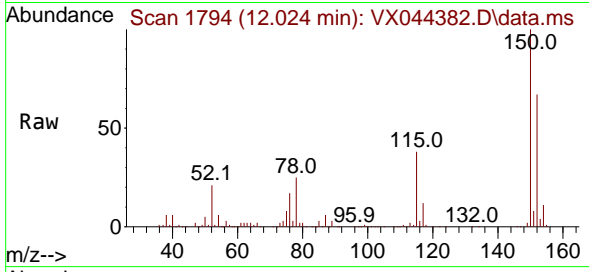
Tgt Ion: 117 Resp: 185612
 Ion Ratio Lower Upper
 117 100
 82 55.5 45.8 68.8
 119 31.6 25.0 37.4



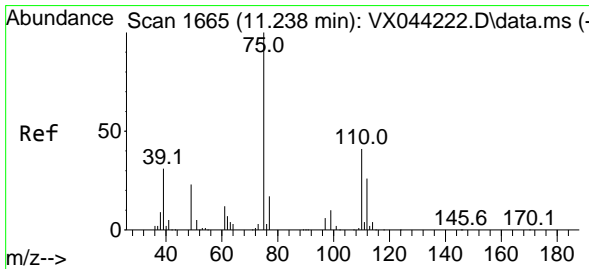
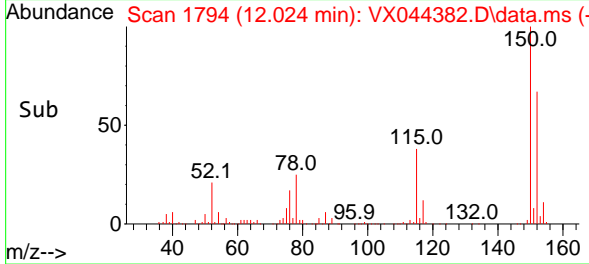
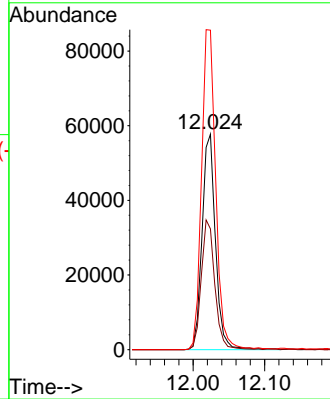


#72
 1,4-Dichlorobenzene-d4
 Concen: 50.000 ug/l
 RT: 12.024 min Scan# 1
 Delta R.T. 0.006 min
 Lab File: VX044382.D
 Acq: 18 Dec 2024 14:48

Instrument :
 MSVOA_X
 ClientSampleId :
 FB02-20241213

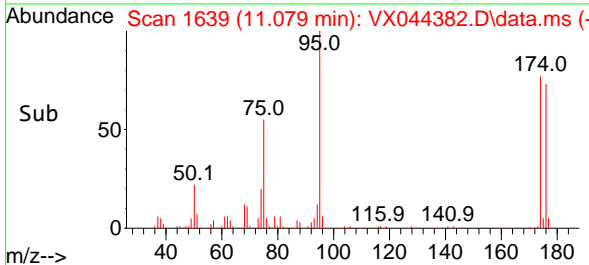
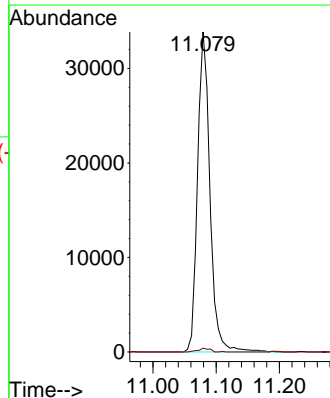
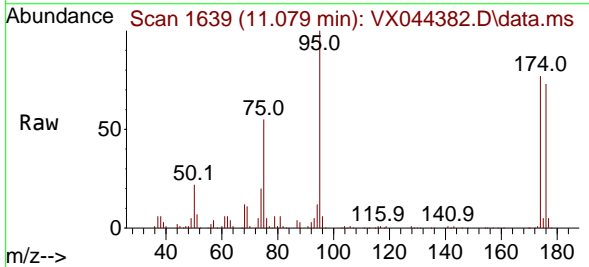


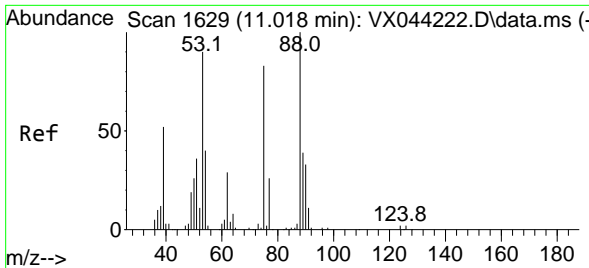
Tgt Ion:152 Resp: 75075
 Ion Ratio Lower Upper
 152 100
 115 60.8 44.5 133.3
 150 157.4 0.0 353.8



#76
 1,2,3-Trichloropropane
 Concen: 27.514 ug/l
 RT: 11.079 min Scan# 1639
 Delta R.T. -0.159 min
 Lab File: VX044382.D
 Acq: 18 Dec 2024 14:48

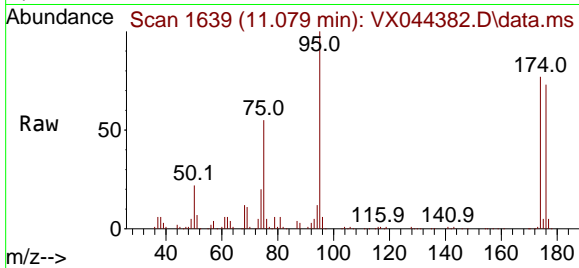
Tgt Ion: 75 Resp: 46120
 Ion Ratio Lower Upper
 75 100
 77 1.1 20.9 62.7#





#81
 trans-1,4-Dichloro-2-butene
 Concen: 75.623 ug/l
 RT: 11.079 min Scan# 10
 Delta R.T. 0.061 min
 Lab File: VX044382.D
 Acq: 18 Dec 2024 14:48

Instrument : MSVOA_X
 ClientSampleId : FB02-20241213



Tgt Ion: 75 Resp: 46120
 Ion Ratio Lower Upper
 75 100
 53 0.0 93.6 140.4#
 89 0.0 37.3 55.9#

