

Data Path : Z:\voasrv\HPCHEM1\MSVOA_X\Data\VX121824\
 Data File : VX044394.D
 Acq On : 18 Dec 2024 19:28
 Operator : JC/MD
 Sample : P5261-12
 Misc : 5.0mL/MSVOA_X/WATER
 ALS Vial : 21 Sample Multiplier: 1

Instrument :
 MSVOA_X
 ClientSampleId :

Quant Time: Dec 19 00:53:00 2024
 Quant Method : Z:\voasrv\HPCHEM1\MSVOA_X\Method\82X121124W.M
 Quant Title : SW846 8260
 QLast Update : Thu Dec 12 04:28:14 2024
 Response via : Initial Calibration

Compound	R.T.	QIon	Response	Conc	Units	Dev(Min)

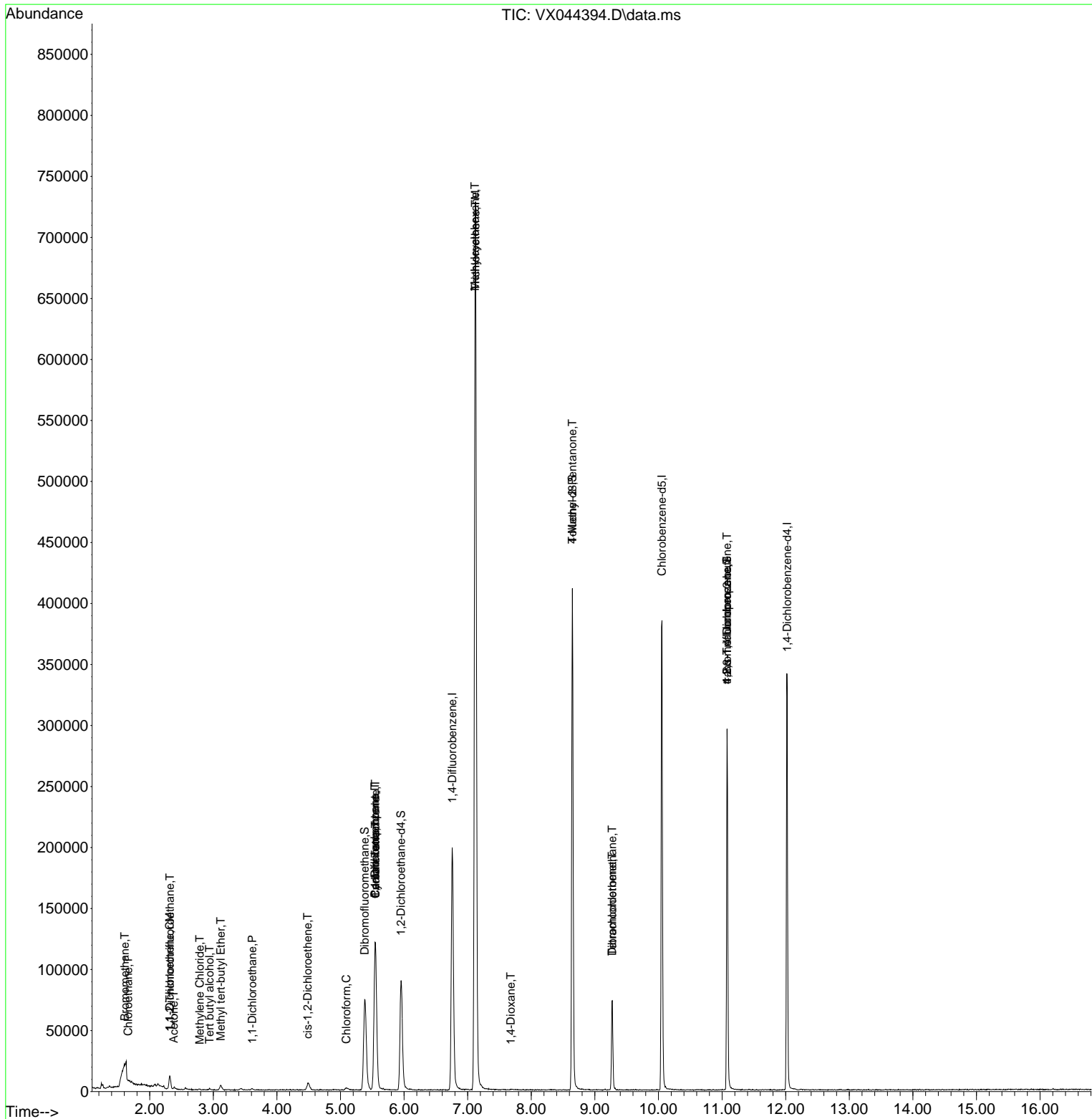
Internal Standards						
1) Pentafluorobenzene	5.544	168	112207	50.000	ug/l	0.00
34) 1,4-Difluorobenzene	6.757	114	201079	50.000	ug/l	0.00
63) Chlorobenzene-d5	10.055	117	175960	50.000	ug/l	0.00
72) 1,4-Dichlorobenzene-d4	12.024	152	70513	50.000	ug/l	0.00
System Monitoring Compounds						
33) 1,2-Dichloroethane-d4	5.952	65	87151	44.299	ug/l	0.00
Spiked Amount	50.000	Range 74 - 125	Recovery	=	88.600%	
35) Dibromofluoromethane	5.379	113	65617	47.117	ug/l	0.00
Spiked Amount	50.000	Range 75 - 124	Recovery	=	94.240%	
50) Toluene-d8	8.647	98	240656	51.221	ug/l	0.00
Spiked Amount	50.000	Range 86 - 113	Recovery	=	102.440%	
62) 4-Bromofluorobenzene	11.079	95	76504	46.599	ug/l	0.00
Spiked Amount	50.000	Range 77 - 121	Recovery	=	93.200%	
Target Compounds						
						Qvalue
5) Bromomethane	1.605	94	436	0.356	ug/l	91
6) Chloroethane	1.660	64	237	0.220	ug/l #	41
9) 1,1,2-Trichlorotrifluo...	2.319	101	3669	2.679	ug/l	98
11) Tert butyl alcohol	2.941	59	282	1.017	ug/l #	71
12) 1,1-Dichloroethene	2.313	96	965	0.767	ug/l #	62
16) Acetone	2.380	43	867	1.081	ug/l #	82
19) Methyl tert-butyl Ether	3.117	73	3975	0.810	ug/l	95
20) Methylene Chloride	2.788	84	377	0.250	ug/l #	46
24) 1,1-Dichloroethane	3.611	63	1443	0.549	ug/l #	92
27) cis-1,2-Dichloroethene	4.483	96	4027	2.372	ug/l	91
30) Chloroform	5.093	83	2304	0.780	ug/l #	82
31) Cyclohexane	5.550	56	2820	1.328	ug/l #	55
36) 1,1-Dichloropropene	5.544	75	9842	5.467	ug/l #	51
38) Carbon Tetrachloride	5.550	117	12878	6.645	ug/l #	18
39) Methylcyclohexane	7.117	83	3899	1.812	ug/l #	1
44) Trichloroethene	7.123	130	272237	199.734	ug/l	100
49) 1,4-Dioxane	7.677	88	244	8.717	ug/l #	73
51) 4-Methyl-2-Pentanone	8.647	43	1142	0.511	ug/l #	1
60) Dibromochloromethane	9.275	129	13888	10.955	ug/l #	11
64) Tetrachloroethene	9.275	164	13127	11.240	ug/l	95
76) 1,2,3-Trichloropropane	11.079	75	42610	27.065	ug/l #	36
81) trans-1,4-Dichloro-2-b...	11.079	75	42610	74.479	ug/l #	4

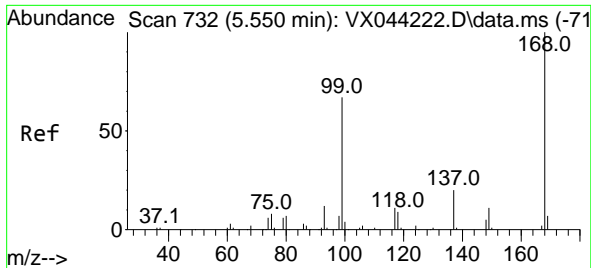
(#) = qualifier out of range (m) = manual integration (+) = signals summed

Data Path : Z:\voasrv\HPCHEM1\MSVOA_X\Data\VX121824\
 Data File : VX044394.D
 Acq On : 18 Dec 2024 19:28
 Operator : JC/MD
 Sample : P5261-12
 Misc : 5.0mL/MSVOA_X/WATER
 ALS Vial : 21 Sample Multiplier: 1

Instrument :
 MSVOA_X
 ClientSampleId :

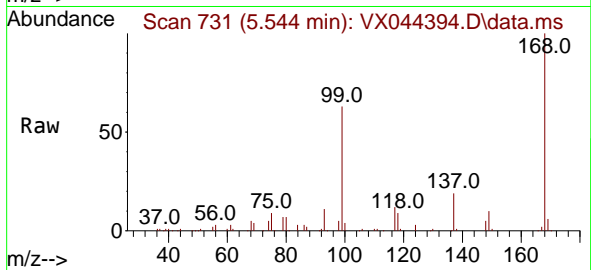
Quant Time: Dec 19 00:53:00 2024
 Quant Method : Z:\voasrv\HPCHEM1\MSVOA_X\Method\82X121124W.M
 Quant Title : SW846 8260
 QLast Update : Thu Dec 12 04:28:14 2024
 Response via : Initial Calibration



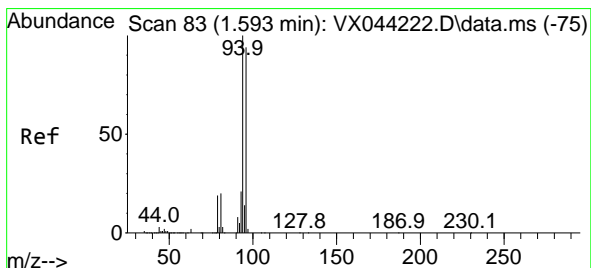
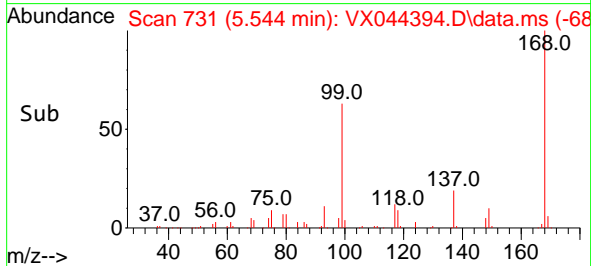
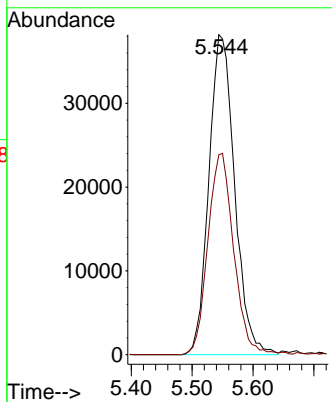


#1
 Pentafluorobenzene
 Concen: 50.000 ug/l
 RT: 5.544 min Scan# 71
 Delta R.T. -0.006 min
 Lab File: VX044394.D
 Acq: 18 Dec 2024 19:28

Instrument :
 MSVOA_X
 ClientSampleId :

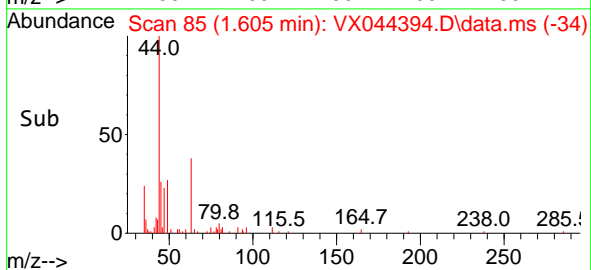
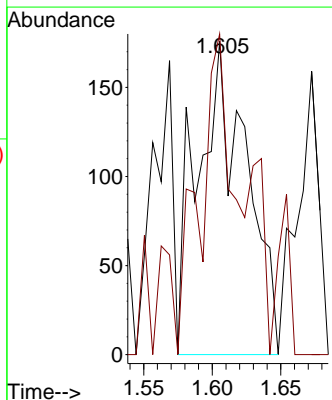
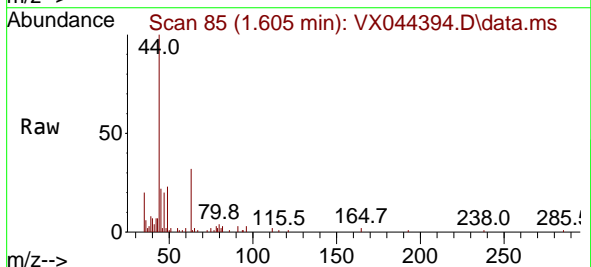


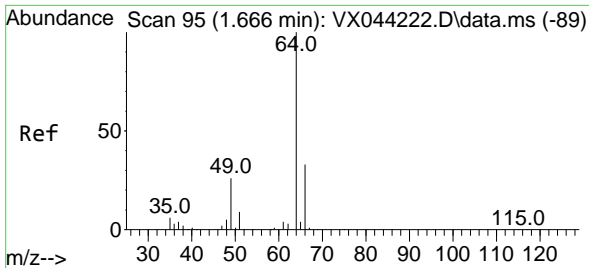
Tgt Ion:168 Resp: 112207
 Ion Ratio Lower Upper
 168 100
 99 62.5 53.4 80.0



#5
 Bromomethane
 Concen: 0.356 ug/l
 RT: 1.605 min Scan# 85
 Delta R.T. 0.012 min
 Lab File: VX044394.D
 Acq: 18 Dec 2024 19:28

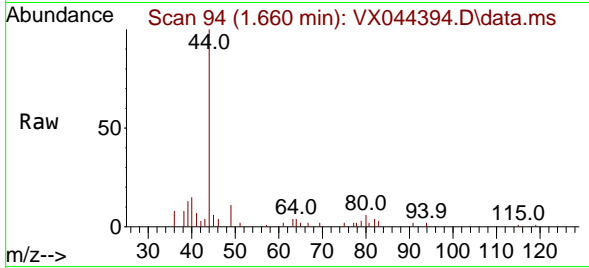
Tgt Ion: 94 Resp: 436
 Ion Ratio Lower Upper
 94 100
 96 102.3 74.9 112.3



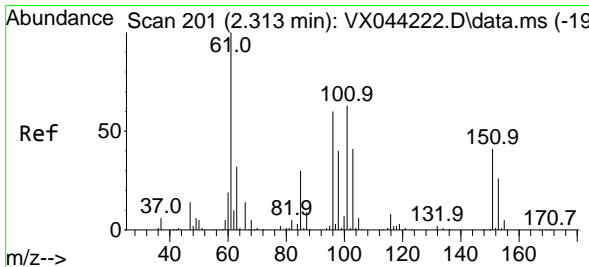
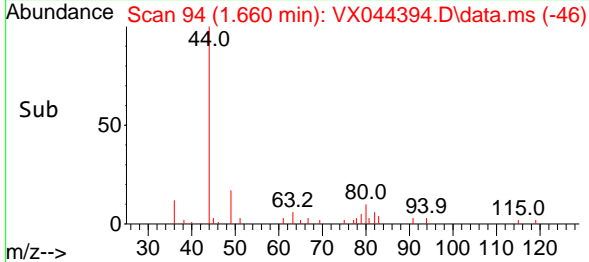
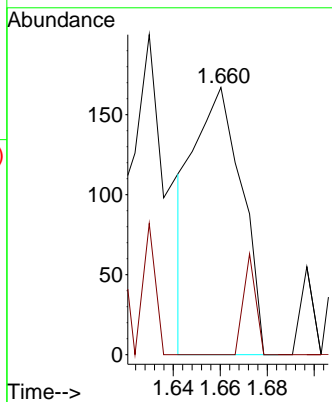


#6
 Chloroethane
 Concen: 0.220 ug/l
 RT: 1.660 min Scan# 94
 Delta R.T. -0.006 min
 Lab File: VX044394.D
 Acq: 18 Dec 2024 19:28

Instrument : MSVOA_X
 ClientSampleId :

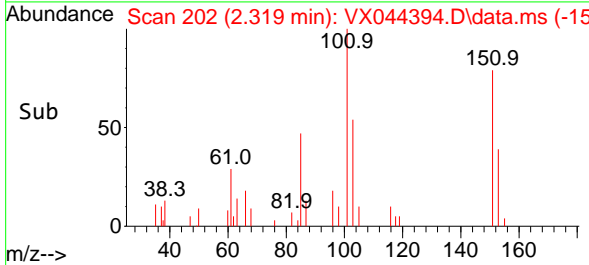
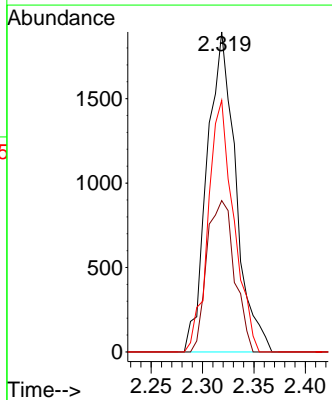
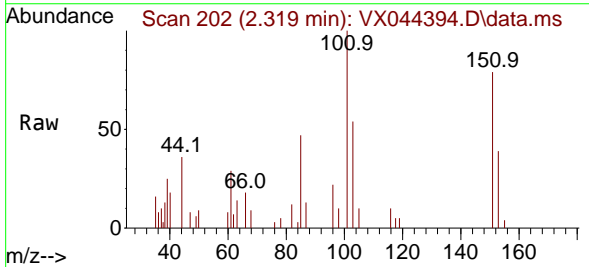


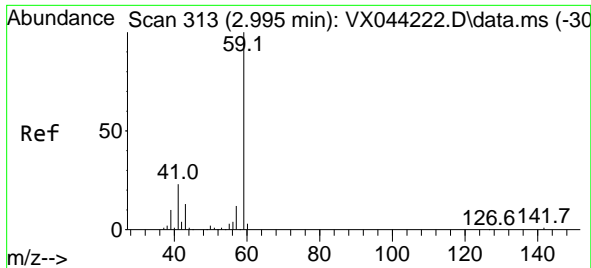
Tgt Ion: 64 Resp: 237
 Ion Ratio Lower Upper
 64 100
 66 0.0 26.6 39.8#



#9
 1,1,2-Trichlorotrifluoroethane
 Concen: 2.679 ug/l
 RT: 2.319 min Scan# 202
 Delta R.T. 0.006 min
 Lab File: VX044394.D
 Acq: 18 Dec 2024 19:28

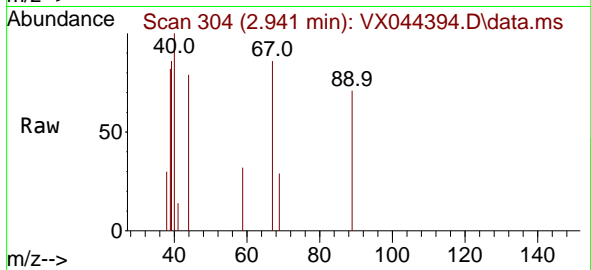
Tgt Ion: 101 Resp: 3669
 Ion Ratio Lower Upper
 101 100
 85 45.7 38.5 57.7
 151 70.2 55.8 83.6



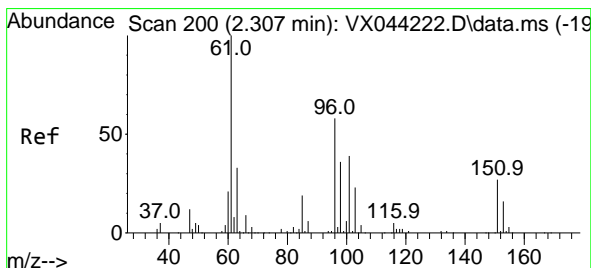
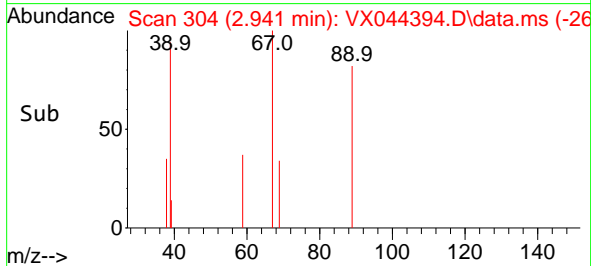
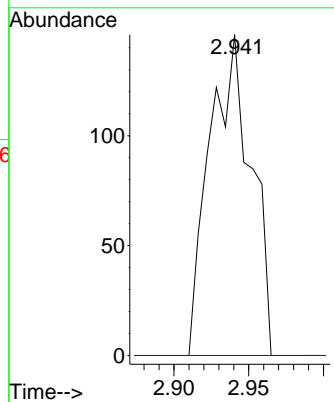


#11
 Tert butyl alcohol
 Concen: 1.017 ug/l
 RT: 2.941 min Scan# 304
 Delta R.T. -0.055 min
 Lab File: VX044394.D
 Acq: 18 Dec 2024 19:28

Instrument : MSVOA_X
 ClientSampleId :

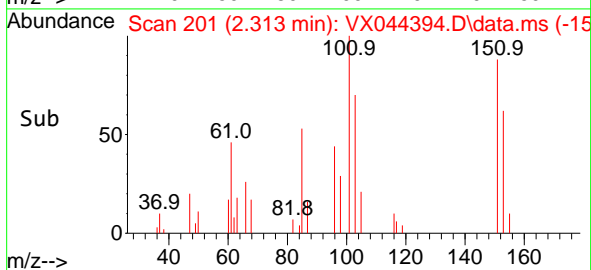
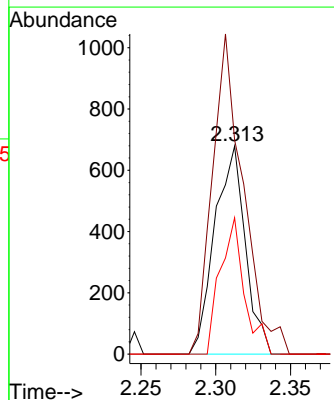
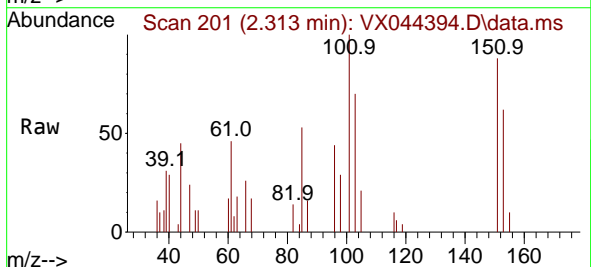


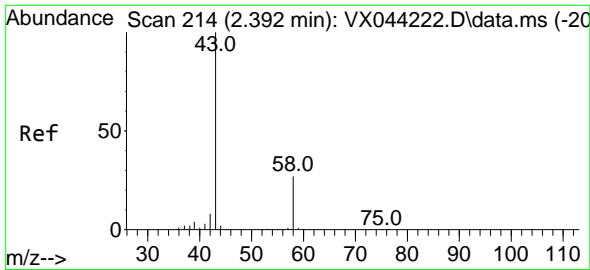
Tgt Ion: 59 Resp: 282
 Ion Ratio Lower Upper
 59 100
 57 0.0 8.8 13.2#



#12
 1,1-Dichloroethene
 Concen: 0.767 ug/l
 RT: 2.313 min Scan# 201
 Delta R.T. 0.006 min
 Lab File: VX044394.D
 Acq: 18 Dec 2024 19:28

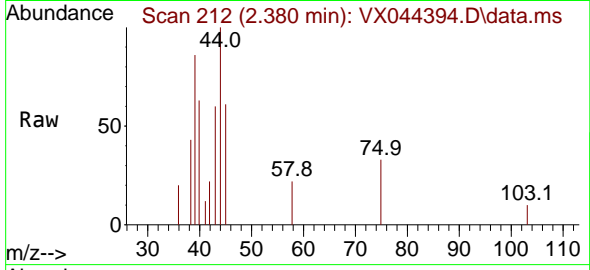
Tgt Ion: 96 Resp: 965
 Ion Ratio Lower Upper
 96 100
 61 102.9 138.0 207.0#
 98 65.5 50.0 75.0



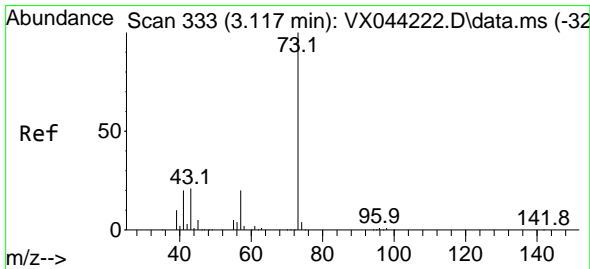
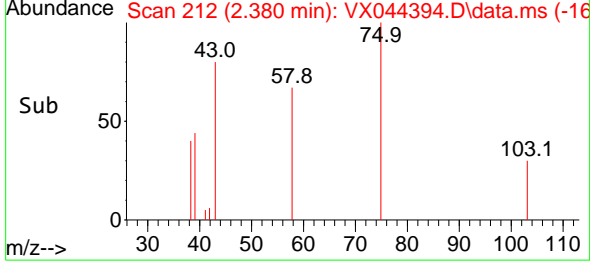
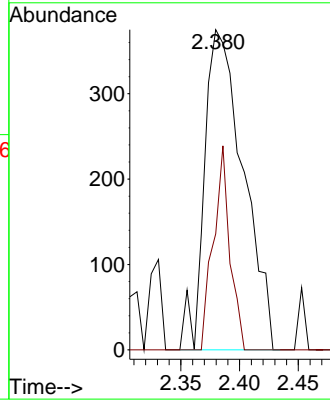


#16
 Acetone
 Concen: 1.081 ug/l
 RT: 2.380 min Scan# 214
 Delta R.T. -0.012 min
 Lab File: VX044394.D
 Acq: 18 Dec 2024 19:28

Instrument : MSVOA_X
 ClientSampleId :

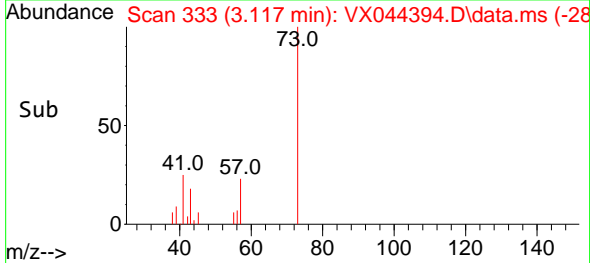
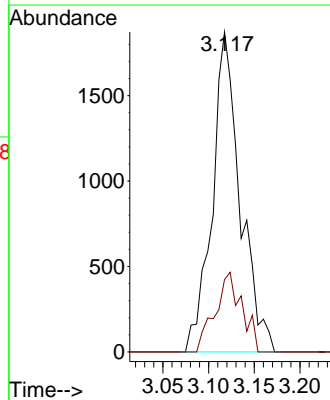
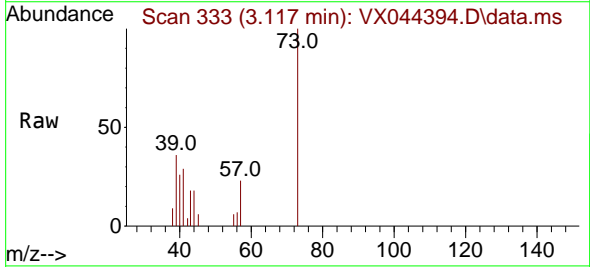


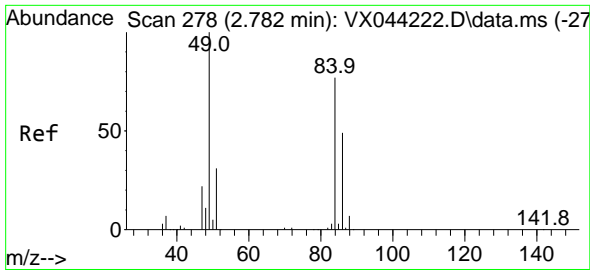
Tgt Ion: 43 Resp: 867
 Ion Ratio Lower Upper
 43 100
 58 36.3 21.6 32.4#



#19
 Methyl tert-butyl Ether
 Concen: 0.810 ug/l
 RT: 3.117 min Scan# 333
 Delta R.T. -0.000 min
 Lab File: VX044394.D
 Acq: 18 Dec 2024 19:28

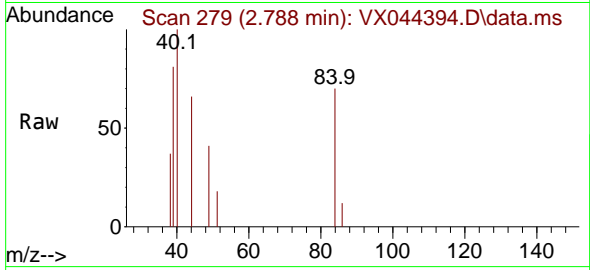
Tgt Ion: 73 Resp: 3975
 Ion Ratio Lower Upper
 73 100
 57 22.6 16.2 24.4





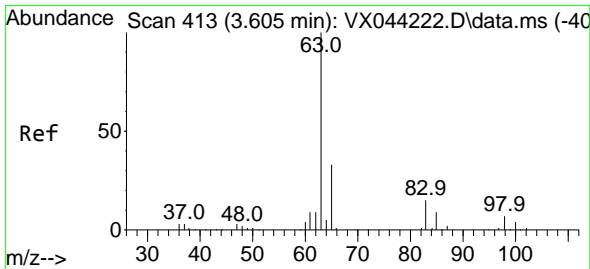
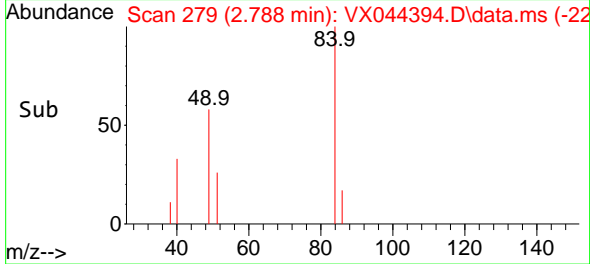
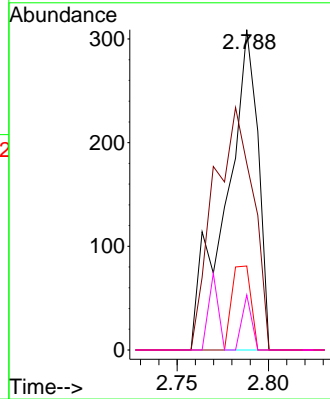
#20
 Methylene Chloride
 Concen: 0.250 ug/l
 RT: 2.788 min Scan# 21
 Delta R.T. 0.006 min
 Lab File: VX044394.D
 Acq: 18 Dec 2024 19:28

Instrument :
 MSVOA_X
 ClientSampleId :



Tgt Ion: 84 Resp: 377

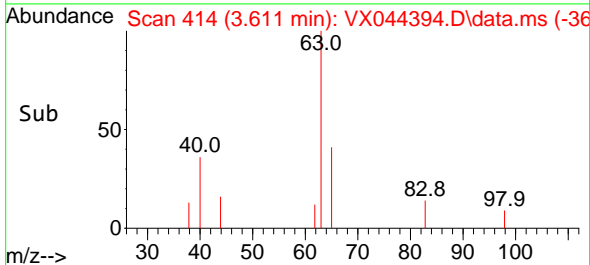
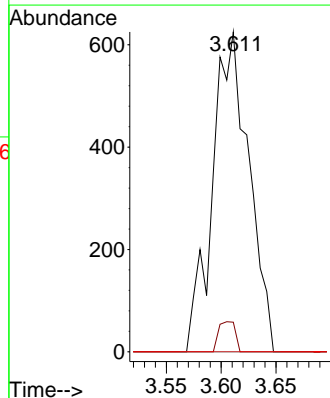
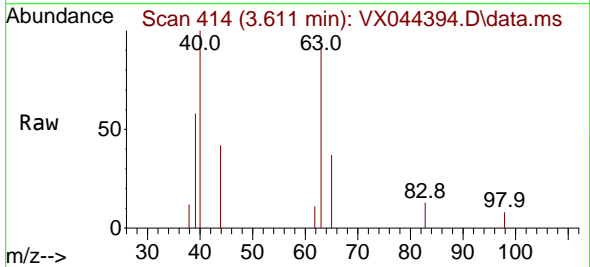
Ion	Ratio	Lower	Upper
84	100		
49	58.3	104.2	156.4#
51	26.2	32.2	48.4#
86	17.2	50.9	76.3#

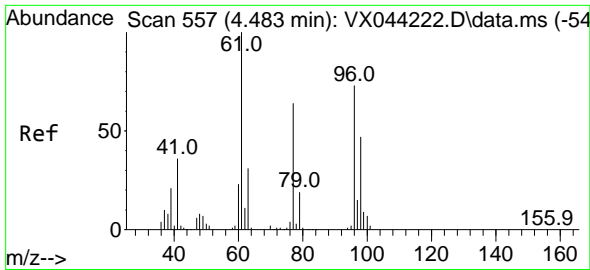


#24
 1,1-Dichloroethane
 Concen: 0.549 ug/l
 RT: 3.611 min Scan# 414
 Delta R.T. 0.006 min
 Lab File: VX044394.D
 Acq: 18 Dec 2024 19:28

Tgt Ion: 63 Resp: 1443

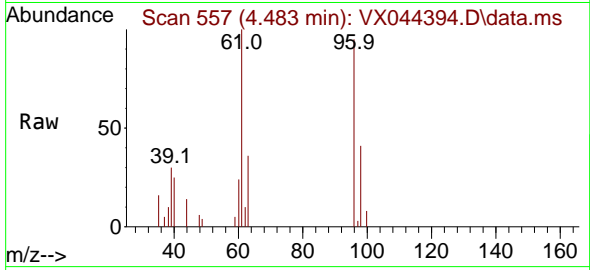
Ion	Ratio	Lower	Upper
63	100		
98	9.3	3.6	10.8
100	0.0	2.1	6.3#





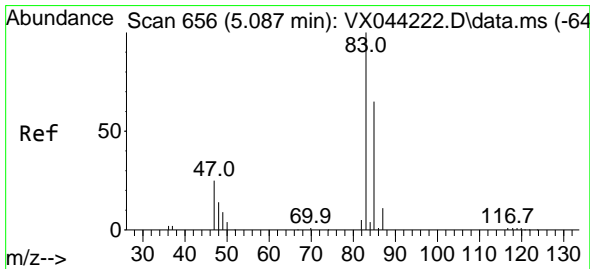
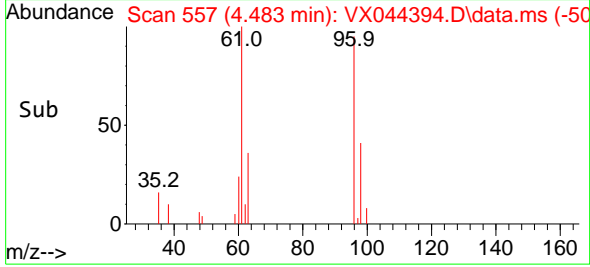
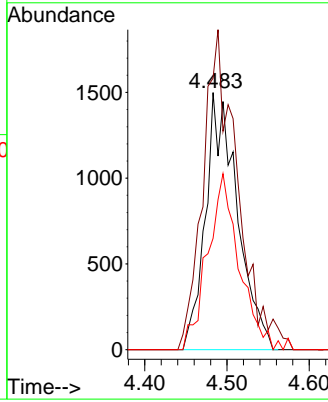
#27
 cis-1,2-Dichloroethene
 Concen: 2.372 ug/l
 RT: 4.483 min Scan# 51
 Delta R.T. -0.000 min
 Lab File: VX044394.D
 Acq: 18 Dec 2024 19:28

Instrument : MSVOA_X
 ClientSampleId :



Tgt Ion: 96 Resp: 4027

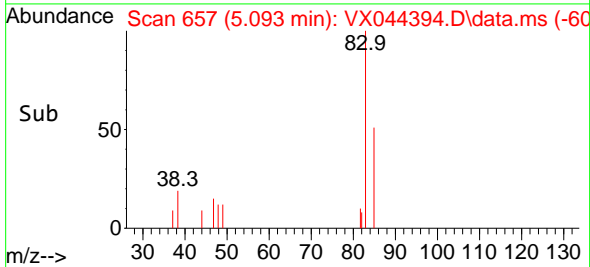
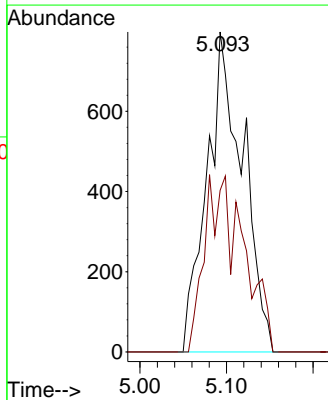
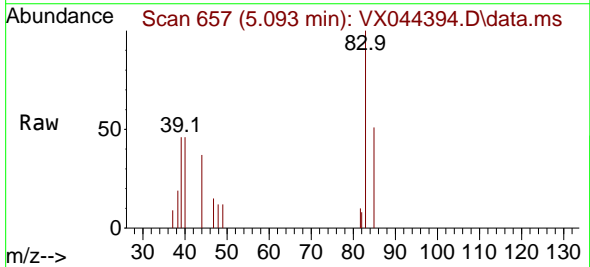
Ion	Ratio	Lower	Upper
96	100		
61	134.8	0.0	299.0
98	68.0	0.0	129.0

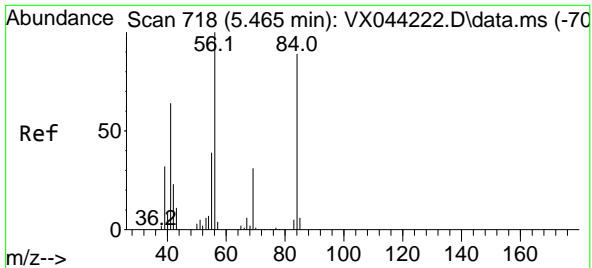


#30
 Chloroform
 Concen: 0.780 ug/l
 RT: 5.093 min Scan# 657
 Delta R.T. 0.006 min
 Lab File: VX044394.D
 Acq: 18 Dec 2024 19:28

Tgt Ion: 83 Resp: 2304

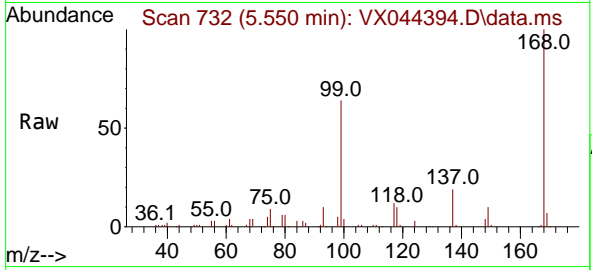
Ion	Ratio	Lower	Upper
83	100		
85	50.5	51.6	77.4#



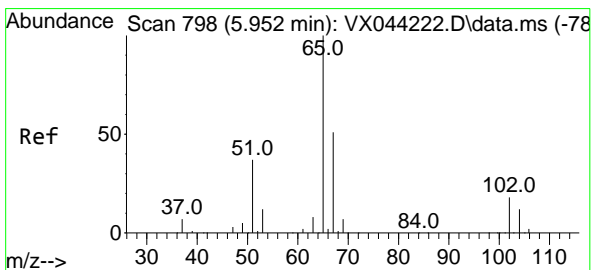
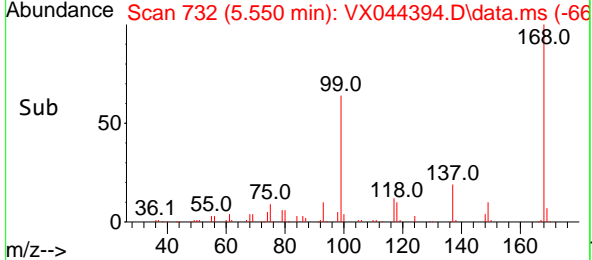
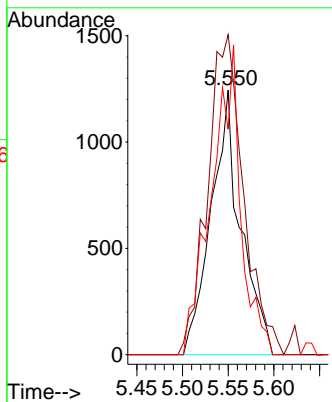


#31
 Cyclohexane
 Concen: 1.328 ug/l
 RT: 5.550 min Scan# 718
 Delta R.T. 0.085 min
 Lab File: VX044394.D
 Acq: 18 Dec 2024 19:28

Instrument : MSVOA_X
 ClientSampleId :

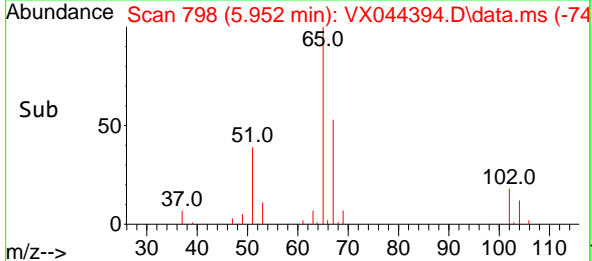
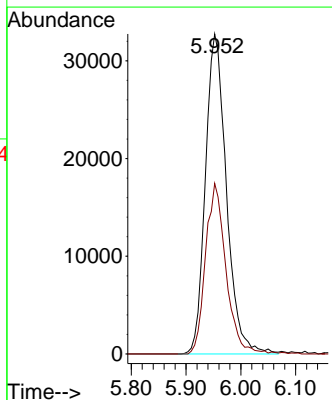
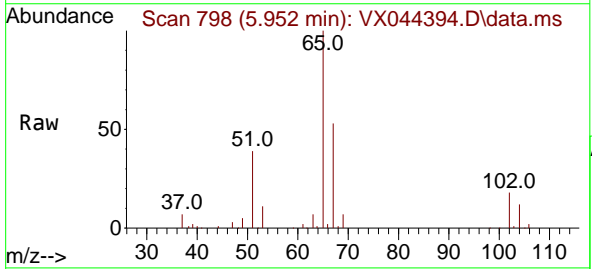


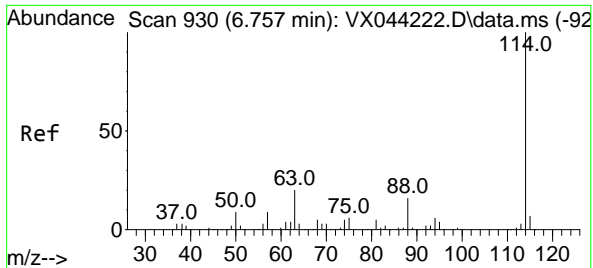
Tgt Ion: 56 Resp: 2820
 Ion Ratio Lower Upper
 56 100
 69 121.0 24.7 37.1#
 84 85.2 71.0 106.6



#33
 1,2-Dichloroethane-d4
 Concen: 44.299 ug/l
 RT: 5.952 min Scan# 798
 Delta R.T. -0.000 min
 Lab File: VX044394.D
 Acq: 18 Dec 2024 19:28

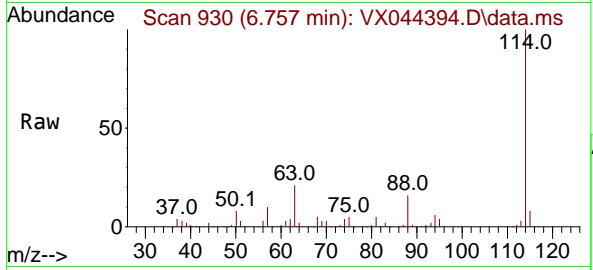
Tgt Ion: 65 Resp: 87151
 Ion Ratio Lower Upper
 65 100
 67 51.9 0.0 101.6





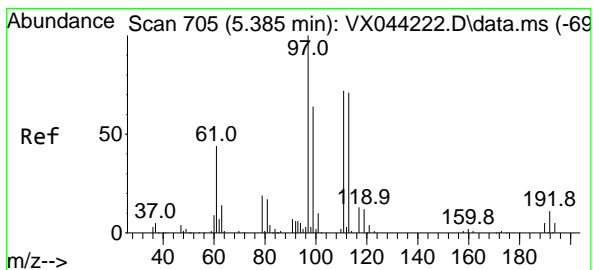
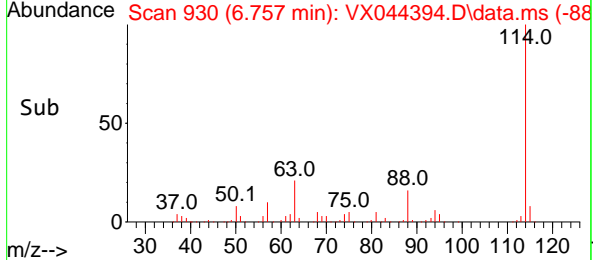
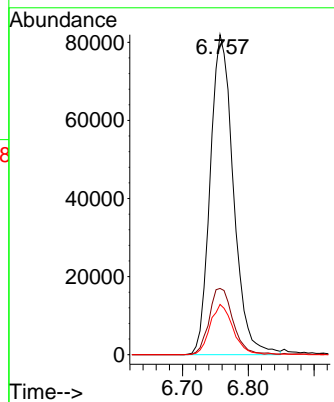
#34
 1,4-Difluorobenzene
 Concen: 50.000 ug/l
 RT: 6.757 min Scan# 91
 Delta R.T. -0.000 min
 Lab File: VX044394.D
 Acq: 18 Dec 2024 19:28

Instrument :
 MSVOA_X
 ClientSampleId :



Tgt Ion:114 Resp: 201079

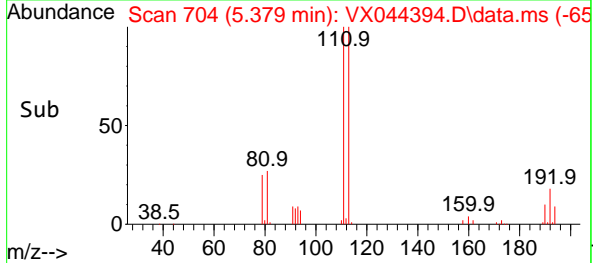
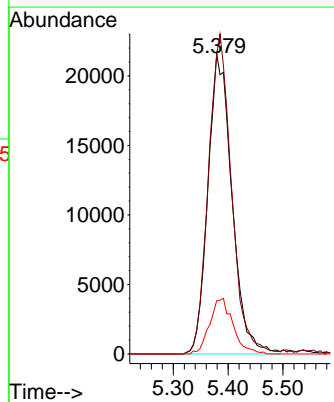
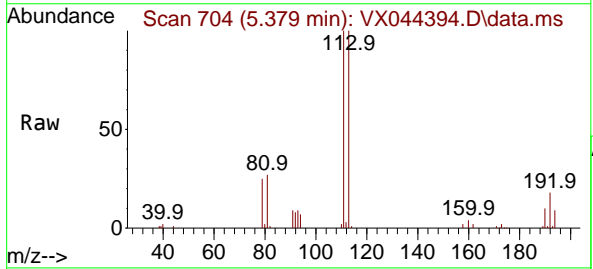
Ion	Ratio	Lower	Upper
114	100		
63	20.7	0.0	40.6
88	15.7	0.0	31.8

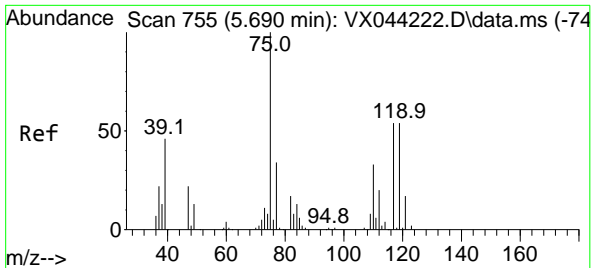


#35
 Dibromofluoromethane
 Concen: 47.117 ug/l
 RT: 5.379 min Scan# 704
 Delta R.T. -0.006 min
 Lab File: VX044394.D
 Acq: 18 Dec 2024 19:28

Tgt Ion:113 Resp: 65617

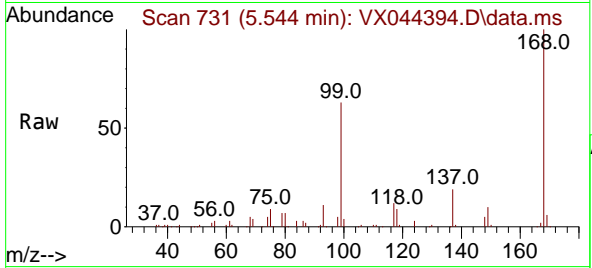
Ion	Ratio	Lower	Upper
113	100		
111	102.7	80.4	120.6
192	17.9	13.3	19.9



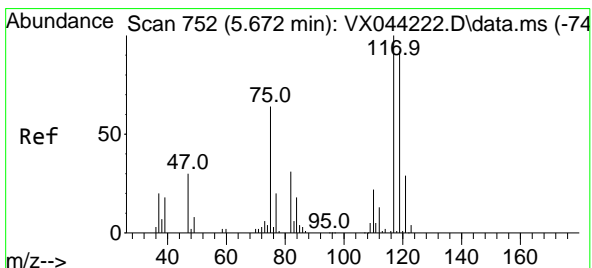
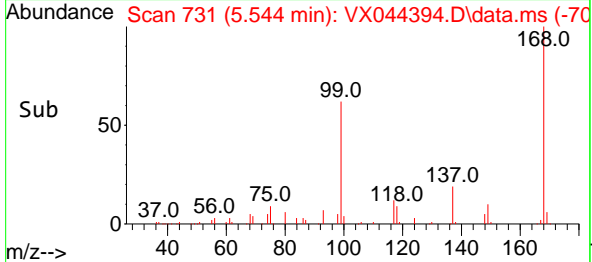
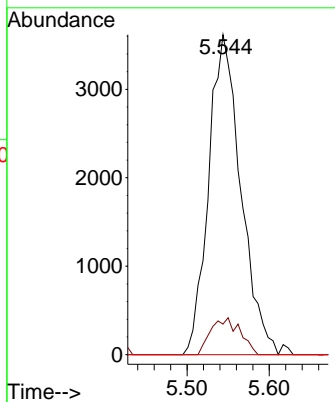


#36
 1,1-Dichloropropene
 Concen: 5.467 ug/l
 RT: 5.544 min Scan# 711
 Delta R.T. -0.146 min
 Lab File: VX044394.D
 Acq: 18 Dec 2024 19:28

Instrument : MSVOA_X
 ClientSampleId :

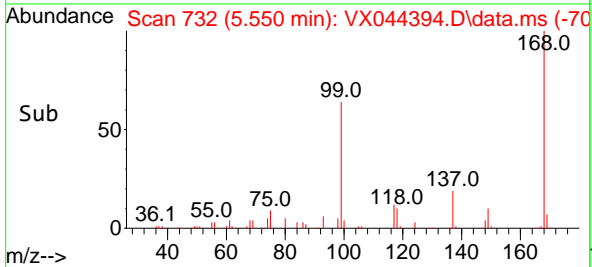
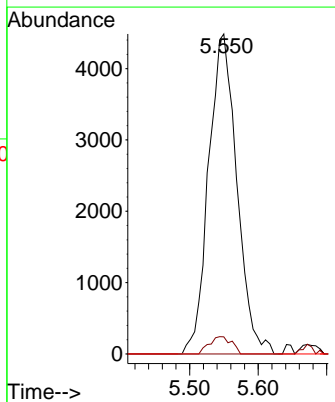
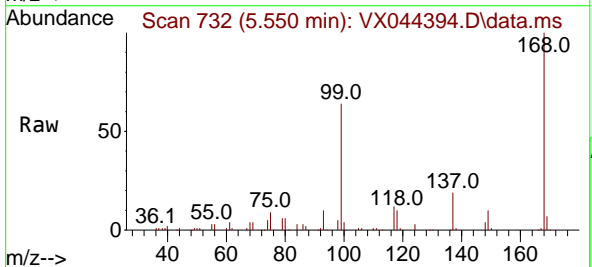


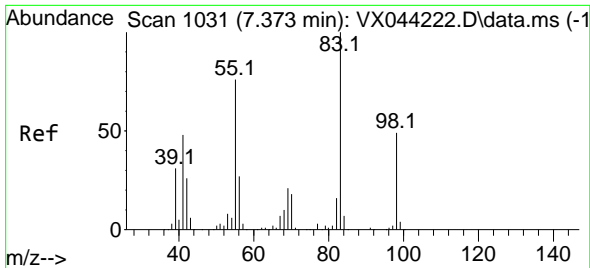
Tgt Ion: 75 Resp: 9842
 Ion Ratio Lower Upper
 75 100
 110 10.5 17.3 51.7#
 77 0.0 25.4 38.0#



#38
 Carbon Tetrachloride
 Concen: 6.645 ug/l
 RT: 5.550 min Scan# 732
 Delta R.T. -0.122 min
 Lab File: VX044394.D
 Acq: 18 Dec 2024 19:28

Tgt Ion: 117 Resp: 12878
 Ion Ratio Lower Upper
 117 100
 119 5.3 74.2 111.4#
 121 0.0 23.0 34.6#

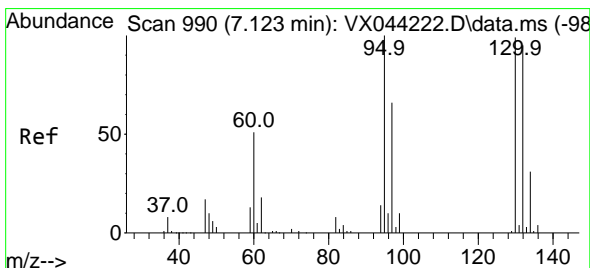
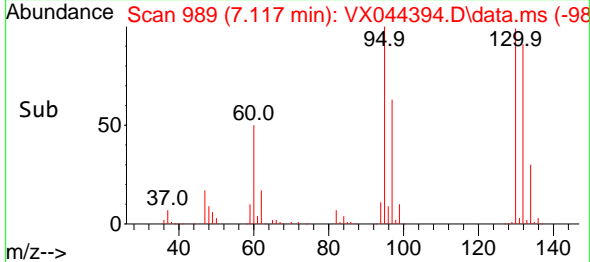
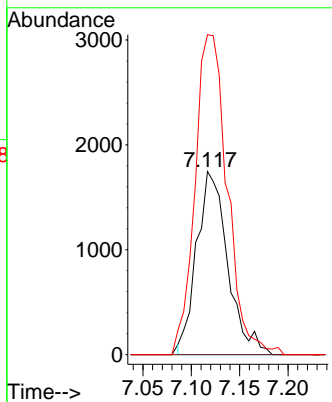
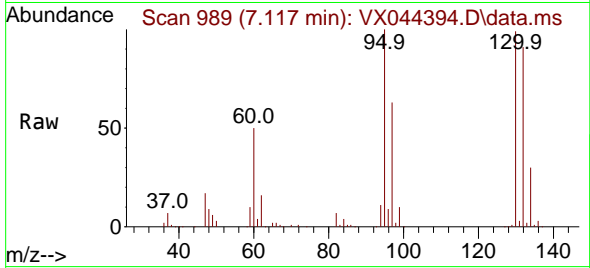




#39
 Methylcyclohexane
 Concen: 1.812 ug/l
 RT: 7.117 min Scan# 989
 Delta R.T. -0.256 min
 Lab File: VX044394.D
 Acq: 18 Dec 2024 19:28

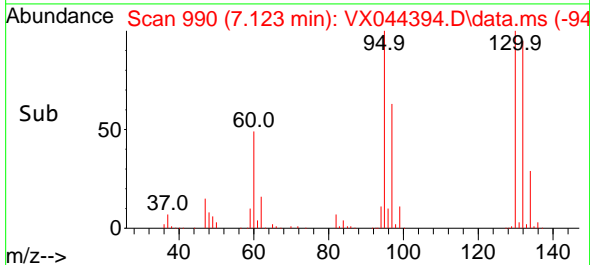
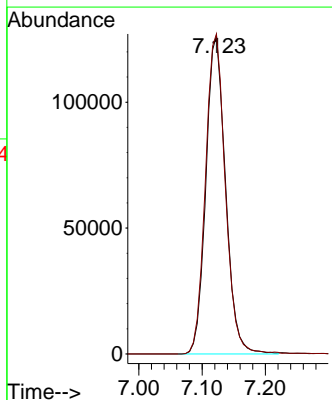
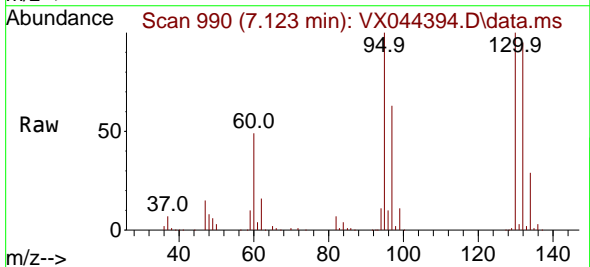
Instrument : MSVOA_X
 ClientSampleId :

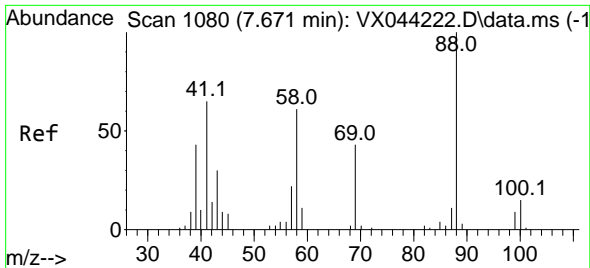
Tgt Ion	Resp	Lower	Upper
83	3899		
55	0.0	60.7	91.1#
98	164.2	38.9	58.3#



#44
 Trichloroethene
 Concen: 199.734 ug/l
 RT: 7.123 min Scan# 990
 Delta R.T. -0.000 min
 Lab File: VX044394.D
 Acq: 18 Dec 2024 19:28

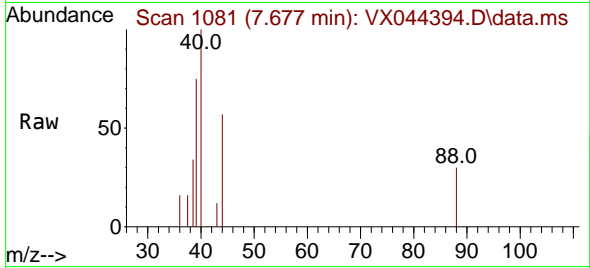
Tgt Ion	Resp	Lower	Upper
130	272237		
95	100.4	0.0	201.4



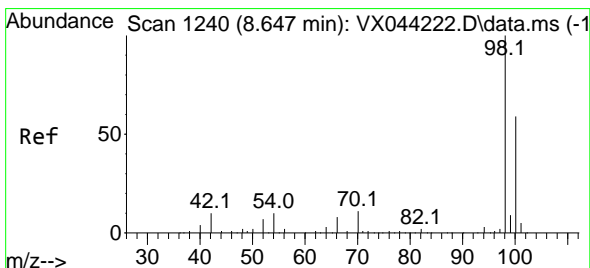
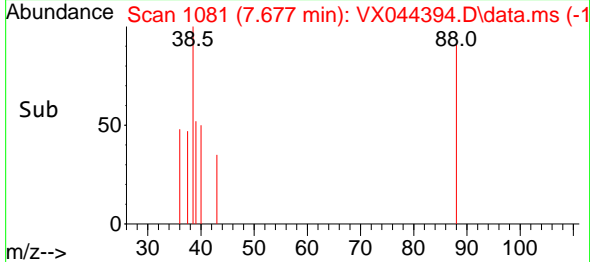
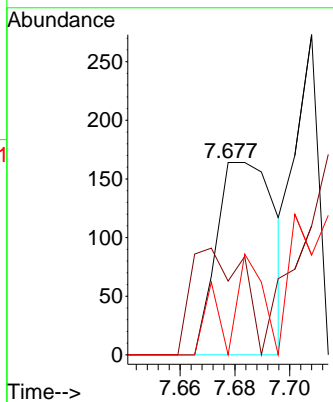


#49
 1,4-Dioxane
 Concen: 8.717 ug/l
 RT: 7.677 min Scan# 1081
 Delta R.T. 0.006 min
 Lab File: VX044394.D
 Acq: 18 Dec 2024 19:28

Instrument : MSVOA_X
 ClientSampleId :

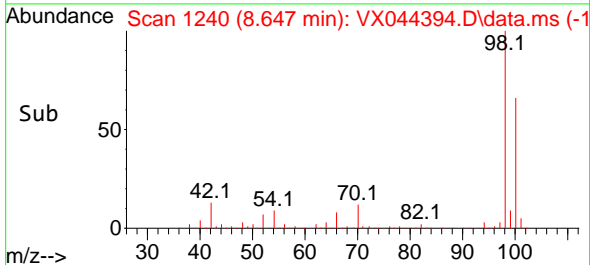
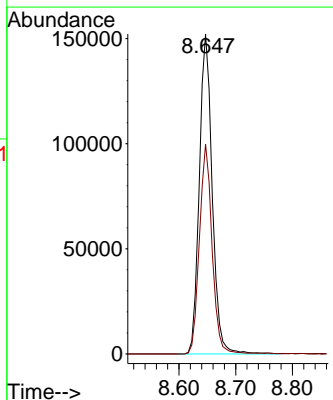
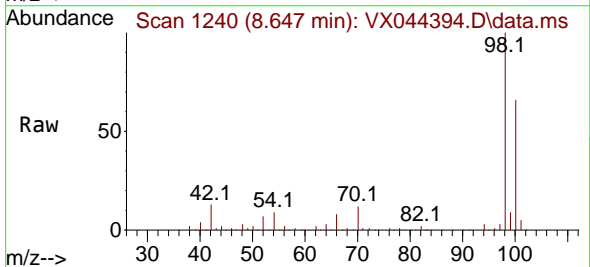


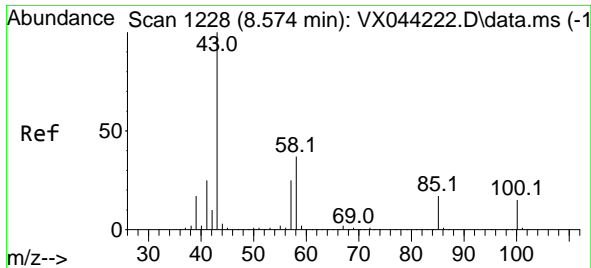
Tgt Ion: 88 Resp: 244
 Ion Ratio Lower Upper
 88 100
 43 48.8 27.1 40.7#
 58 31.6 41.0 61.4#



#50
 Toluene-d8
 Concen: 51.221 ug/l
 RT: 8.647 min Scan# 1240
 Delta R.T. -0.000 min
 Lab File: VX044394.D
 Acq: 18 Dec 2024 19:28

Tgt Ion: 98 Resp: 240656
 Ion Ratio Lower Upper
 98 100
 100 64.2 51.5 77.3

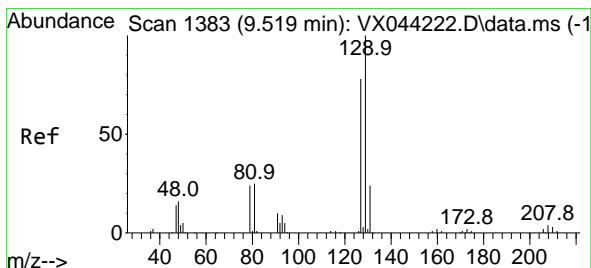
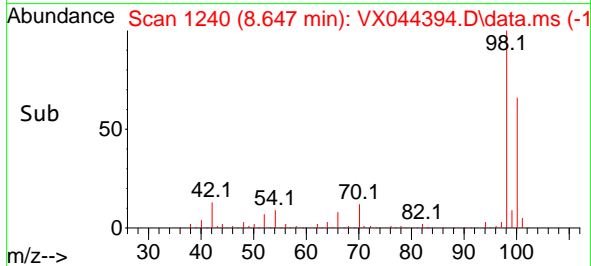
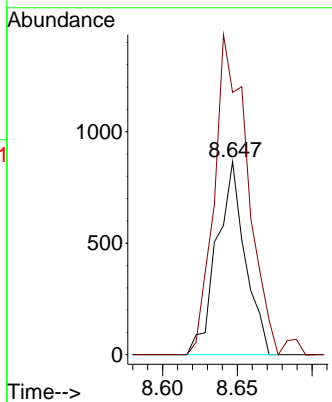
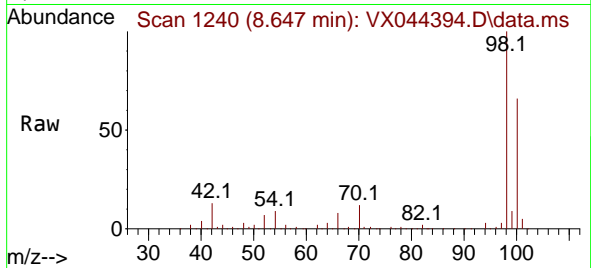




#51
 4-Methyl-2-Pentanone
 Concen: 0.511 ug/l
 RT: 8.647 min Scan# 11
 Delta R.T. 0.073 min
 Lab File: VX044394.D
 Acq: 18 Dec 2024 19:28

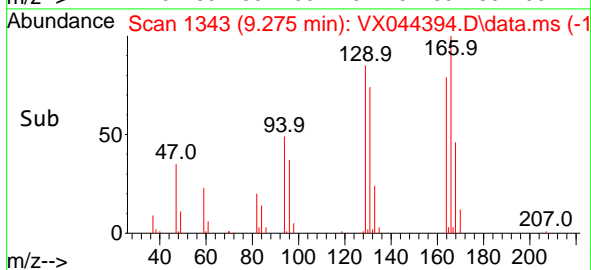
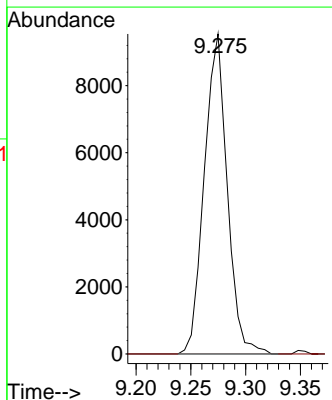
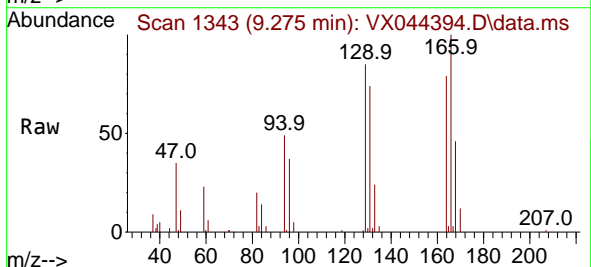
Instrument :
 MSVOA_X
 ClientSampleId :

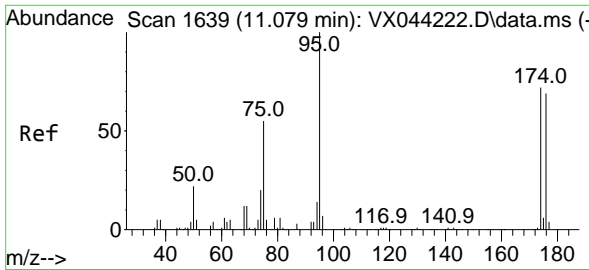
Tgt Ion: 43 Resp: 1142
 Ion Ratio Lower Upper
 43 100
 58 198.1 29.4 44.0#



#60
 Dibromochloromethane
 Concen: 10.955 ug/l
 RT: 9.275 min Scan# 1343
 Delta R.T. -0.244 min
 Lab File: VX044394.D
 Acq: 18 Dec 2024 19:28

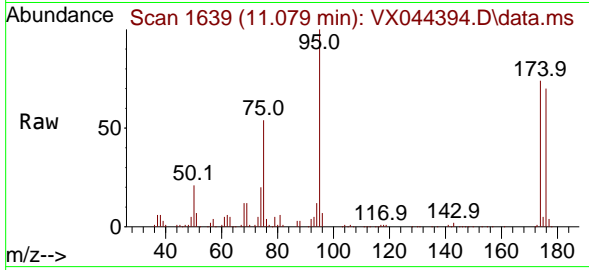
Tgt Ion: 129 Resp: 13888
 Ion Ratio Lower Upper
 129 100
 127 0.0 38.5 115.3#



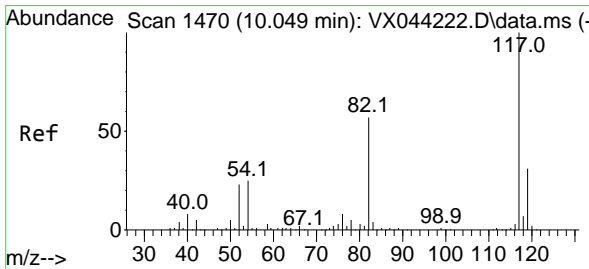
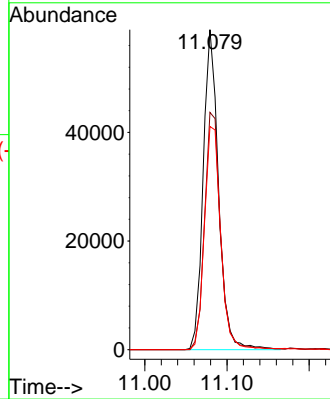
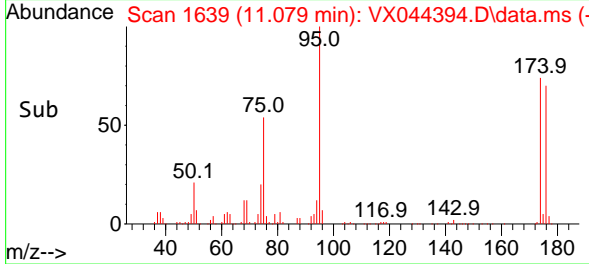


#62
 4-Bromofluorobenzene
 Concen: 46.599 ug/l
 RT: 11.079 min Scan# 1639
 Delta R.T. -0.000 min
 Lab File: VX044394.D
 Acq: 18 Dec 2024 19:28

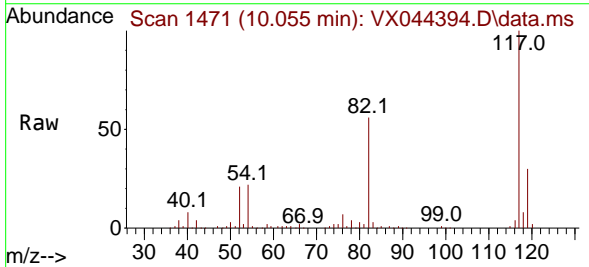
Instrument : MSVOA_X
 ClientSampleId :



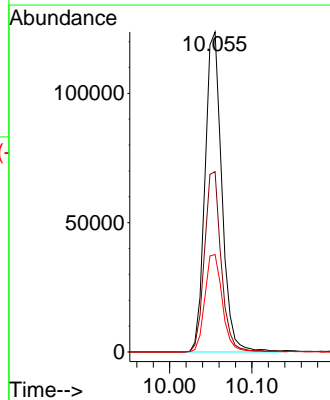
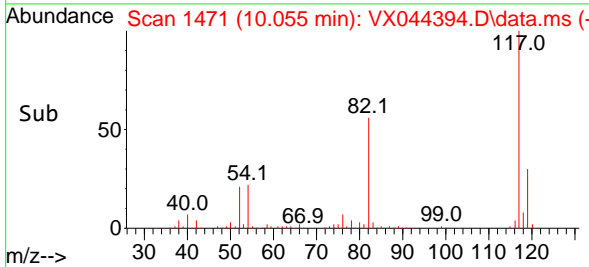
Tgt Ion: 95 Resp: 76504
 Ion Ratio Lower Upper
 95 100
 174 76.9 0.0 145.8
 176 74.0 0.0 137.8

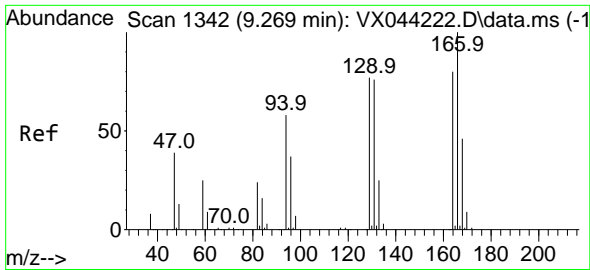


#63
 Chlorobenzene-d5
 Concen: 50.000 ug/l
 RT: 10.055 min Scan# 1471
 Delta R.T. 0.006 min
 Lab File: VX044394.D
 Acq: 18 Dec 2024 19:28



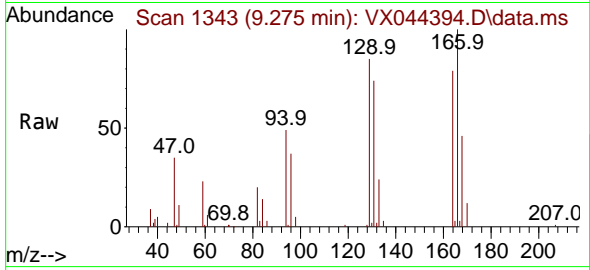
Tgt Ion: 117 Resp: 175960
 Ion Ratio Lower Upper
 117 100
 82 56.4 45.8 68.8
 119 30.4 25.0 37.4



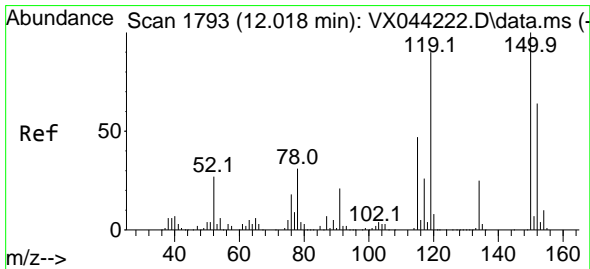
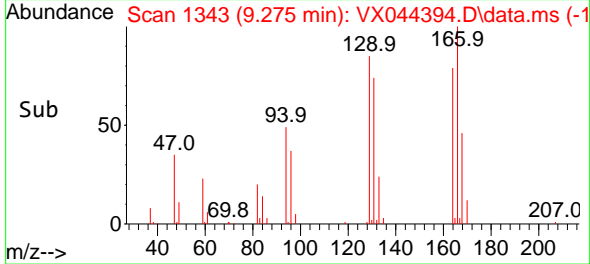
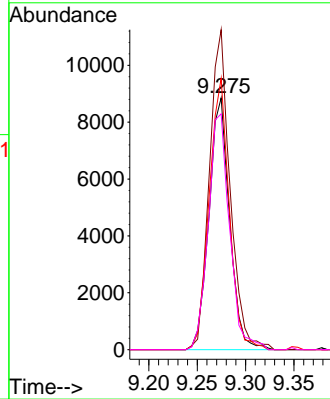


#64
 Tetrachloroethene
 Concen: 11.240 ug/l
 RT: 9.275 min Scan# 11
 Delta R.T. 0.006 min
 Lab File: VX044394.D
 Acq: 18 Dec 2024 19:28

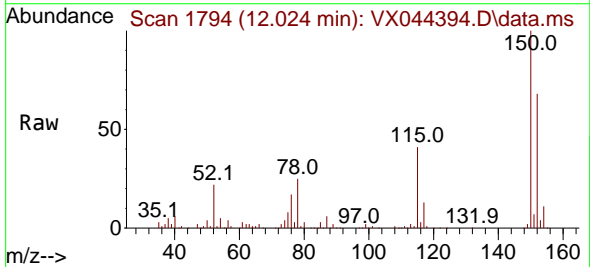
Instrument :
 MSVOA_X
 ClientSampleId :



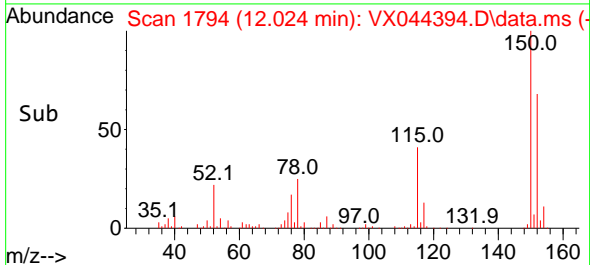
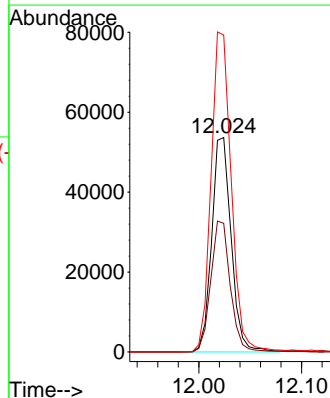
Tgt Ion:164 Resp: 13127
 Ion Ratio Lower Upper
 164 100
 166 127.1 100.4 150.6
 129 107.7 77.2 115.8
 131 93.7 76.2 114.2

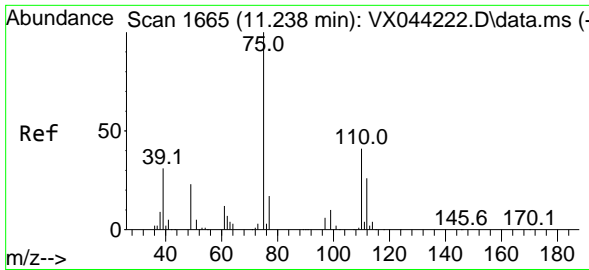


#72
 1,4-Dichlorobenzene-d4
 Concen: 50.000 ug/l
 RT: 12.024 min Scan# 1794
 Delta R.T. 0.006 min
 Lab File: VX044394.D
 Acq: 18 Dec 2024 19:28



Tgt Ion:152 Resp: 70513
 Ion Ratio Lower Upper
 152 100
 115 61.4 44.5 133.3
 150 155.9 0.0 353.8

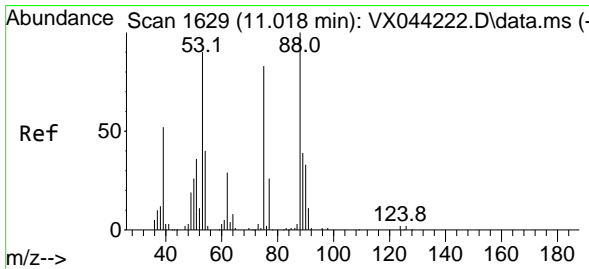
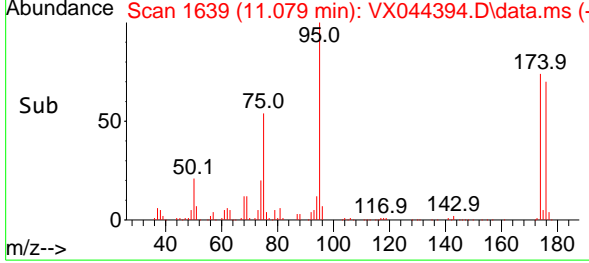
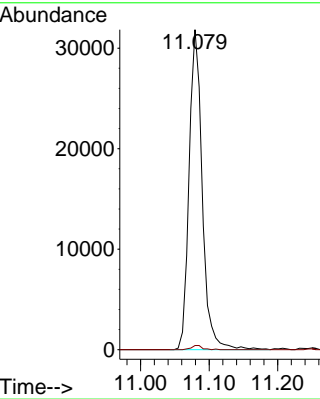
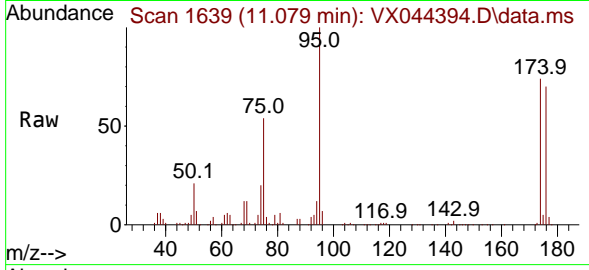




#76
 1,2,3-Trichloropropane
 Concen: 27.065 ug/l
 RT: 11.079 min Scan# 1639
 Delta R.T. -0.159 min
 Lab File: VX044394.D
 Acq: 18 Dec 2024 19:28

Instrument : MSVOA_X
 ClientSampleId :

Tgt Ion: 75 Resp: 42610
 Ion Ratio Lower Upper
 75 100
 77 1.1 20.9 62.7#



#81
 trans-1,4-Dichloro-2-butene
 Concen: 74.479 ug/l
 RT: 11.079 min Scan# 1639
 Delta R.T. 0.061 min
 Lab File: VX044394.D
 Acq: 18 Dec 2024 19:28

Tgt Ion: 75 Resp: 42610
 Ion Ratio Lower Upper
 75 100
 53 0.0 93.6 140.4#
 89 0.0 37.3 55.9#

