

Data Path : Z:\VOASRV\HPCHEM1\MSVOA X\DATA\VX121918\  
 Data File : VX006646.D  
 Acq On : 19 Dec 2018 19:24  
 Operator : JC/MD  
 Sample : J6479-03  
 Misc : 5.0mL/MSVOA X/WATER  
 ALS Vial : 13 Sample Multiplier: 1

Instrument :  
 MSVOA\_X  
 ClientSampled :  
 MW-4

Integration Parameters: RTEINT.P  
 Integrator: RTE  
 Smoothing : ON Filtering: 5  
 Sampling : 1 Min Area: 3 % of largest Peak  
 Start Thrs: 0.2 Max Peaks: 100  
 Stop Thrs : 0 Peak Location: TOP

If leading or trailing edge < 100 prefer < Baseline drop else tangent >  
 Peak separation: 5

Method : Z:\VOASRV\HPCHEM1\MSVOA\_X\METHOD\82X121818W.M  
 Title : SW846 8260

Signal : TIC

peak #	R.T. min	first scan	max scan	last scan	PK TY	peak height	corr. area	corr. % max.	% of total
1	1.605	67	74	78	rBV	31821	57195	1.92%	0.354%
2	2.190	166	170	178	rVB5	17788	31517	1.06%	0.195%
3	2.379	197	201	208	rVB3	18675	31400	1.05%	0.194%
4	3.696	412	417	425	rVB4	12760	34471	1.15%	0.213%
5	5.501	702	713	726	rBV	348482	983117	32.93%	6.083%
6	5.665	726	740	757	rVV	617419	1717000	57.51%	10.624%
7	6.068	796	806	817	rBV	370276	959367	32.14%	5.936%
8	6.860	923	936	954	rBV	932185	2177257	72.93%	13.472%
9	8.043	1123	1130	1137	rVB3	20537	41614	1.39%	0.257%
10	8.714	1233	1240	1254	rBV	1946380	2985333	100.00%	18.472%
11	9.793	1411	1417	1423	rBV	35669	52833	1.77%	0.327%
12	10.110	1461	1469	1480	rBV	1872433	2586803	86.65%	16.006%
13	11.134	1632	1637	1646	rBV	1579280	2025666	67.85%	12.534%
14	12.079	1786	1792	1803	rBV	2005695	2478110	83.01%	15.333%

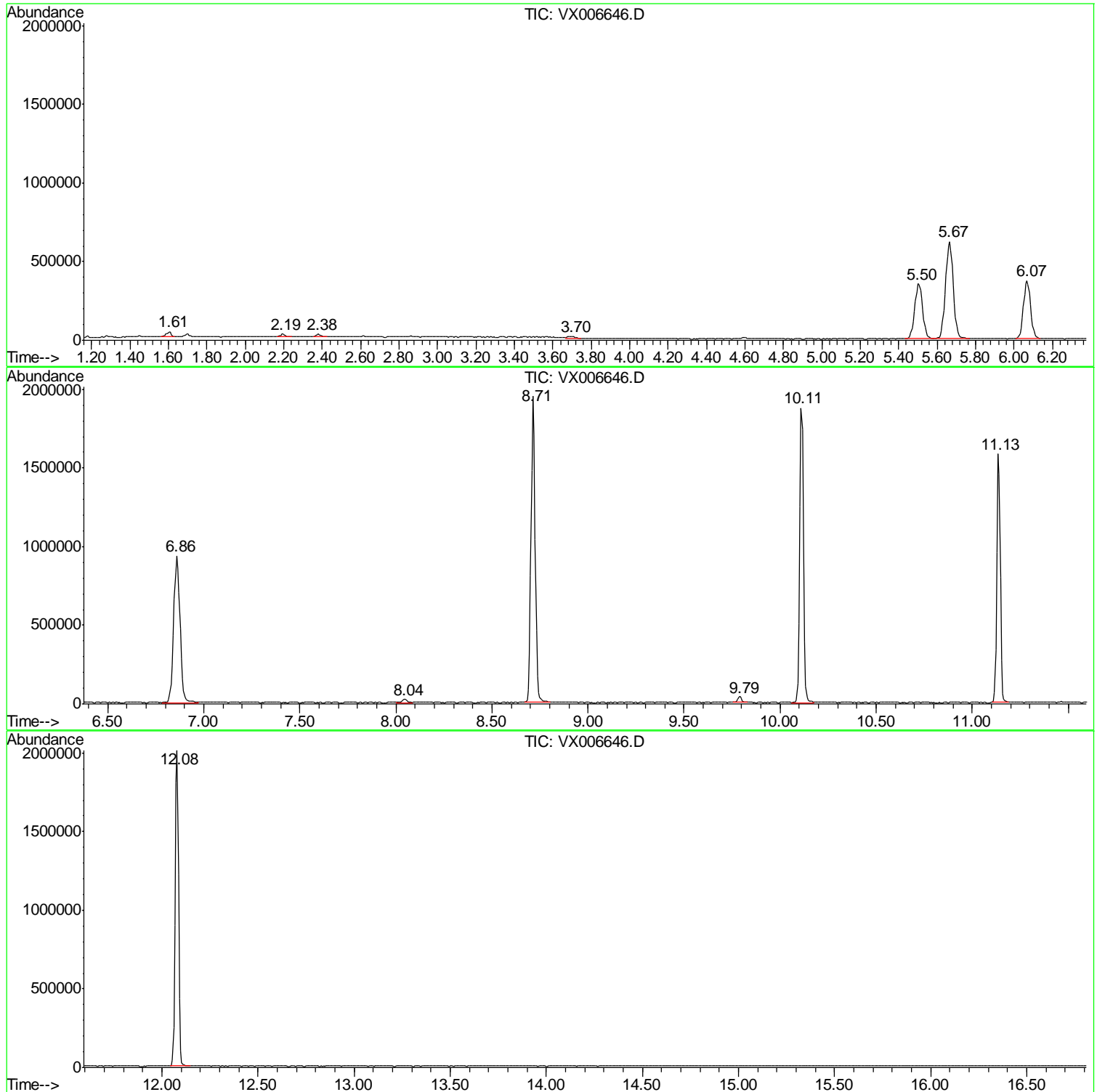
Sum of corrected areas: 16161683

Data Path : Z:\VOASRV\HPCHEM1\MSVOA X\DATA\VX121918\  
Data File : VX006646.D  
Acq On : 19 Dec 2018 19:24  
Operator : JC/MD  
Sample : J6479-03  
Misc : 5.0mL/MSVOA X/WATER  
ALS Vial : 13 Sample Multiplier: 1

Instrument :  
MSVOA\_X  
ClientSampled :  
MW-4

Quant Method : Z:\VOASRV\HPCHEM1\MSVOA\_X\METHOD\82X121818W.M  
Quant Title : SW846 8260

TIC Library : C:\DATABASE\NIST11.L  
TIC Integration Parameters: LSCINT.P



Data Path : Z:\VOASRV\HPCHEM1\MSVOA\_X\DATA\VX121918\  
Data File : VX006646.D  
Acq On : 19 Dec 2018 19:24  
Operator : JC/MD  
Sample : J6479-03  
Misc : 5.0mL/MSVOA\_X/WATER  
ALS Vial : 13 Sample Multiplier: 1

Instrument :  
MSVOA\_X  
ClientSampleId :  
MW-4

Quant Method : Z:\VOASRV\HPCHEM1\MSVOA\_X\METHOD\82X121818W.M  
Quant Title : SW846 8260

TIC Library : C:\DATABASE\NIST11.L  
TIC Integration Parameters: LSCINT.P

No Library Search Compounds Detected

\*\*\*\*\*

Data Path : Z:\VOASRV\HPCHEM1\MSVOA\_X\DATA\VX121918\  
Data File : VX006646.D  
Acq On : 19 Dec 2018 19:24  
Operator : JC/MD  
Sample : J6479-03  
Misc : 5.0mL/MSVOA\_X/WATER  
ALS Vial : 13 Sample Multiplier: 1

Instrument :  
MSVOA\_X  
ClientSampleId :  
MW-4

Quant Method : Z:\VOASRV\HPCHEM1\MSVOA\_X\METHOD\82X121818W.M  
Quant Title : SW846 8260

TIC Library : C:\DATABASE\NIST11.L  
TIC Integration Parameters: LSCINT.P

TIC Top Hit name	RT	EstConc	Units	Response	--Internal Standard--			
					#	RT	Resp	Conc

---