

Data Path : Z:\VOASRV\HPCHEM1\MSVOA X\DATA\VX121919\
 Data File : VX014123.D
 Acq On : 19 Dec 2019 16:14
 Operator : JC/SP
 Sample : K6372-21
 Misc : 5.0mL/MSVOA X/WATER
 ALS Vial : 14 Sample Multiplier: 1

Instrument :
 MSVOA_X
 ClientSampleId :

Quant Time: Dec 20 01:00:08 2019
 Quant Method : Z:\VOASRV\HPCHEM1\MSVOA_X\METHOD\82X121319W.M
 Quant Title : SW846 8260
 QLast Update : Tue Dec 17 03:01:07 2019
 Response via : Initial Calibration

Internal Standards	R.T.	QIon	Response	Conc	Units	Dev(Min)
1) Pentafluorobenzene	5.65	168	541647	50.00	ug/l	0.00
34) 1,4-Difluorobenzene	6.85	114	826039	50.00	ug/l	0.00
63) Chlorobenzene-d5	10.11	117	713190	50.00	ug/l	0.00
72) 1,4-Dichlorobenzene-d4	12.07	152	292149	50.00	ug/l	0.00

System Monitoring Compounds	R.T.	QIon	Response	Conc	Units	Dev(Min)
33) 1,2-Dichloroethane-d4	6.05	65	298333	48.60	ug/l	0.00
Spiked Amount				50.000		
Recovery						97.20%
35) Dibromofluoromethane	5.49	113	245312	48.85	ug/l	0.00
Spiked Amount				50.000		
Recovery						97.70%
50) Toluene-d8	8.71	98	971006	49.67	ug/l	0.00
Spiked Amount				50.000		
Recovery						99.34%
62) 4-Bromofluorobenzene	11.13	95	304673	42.63	ug/l	0.00
Spiked Amount				50.000		
Recovery						85.26%

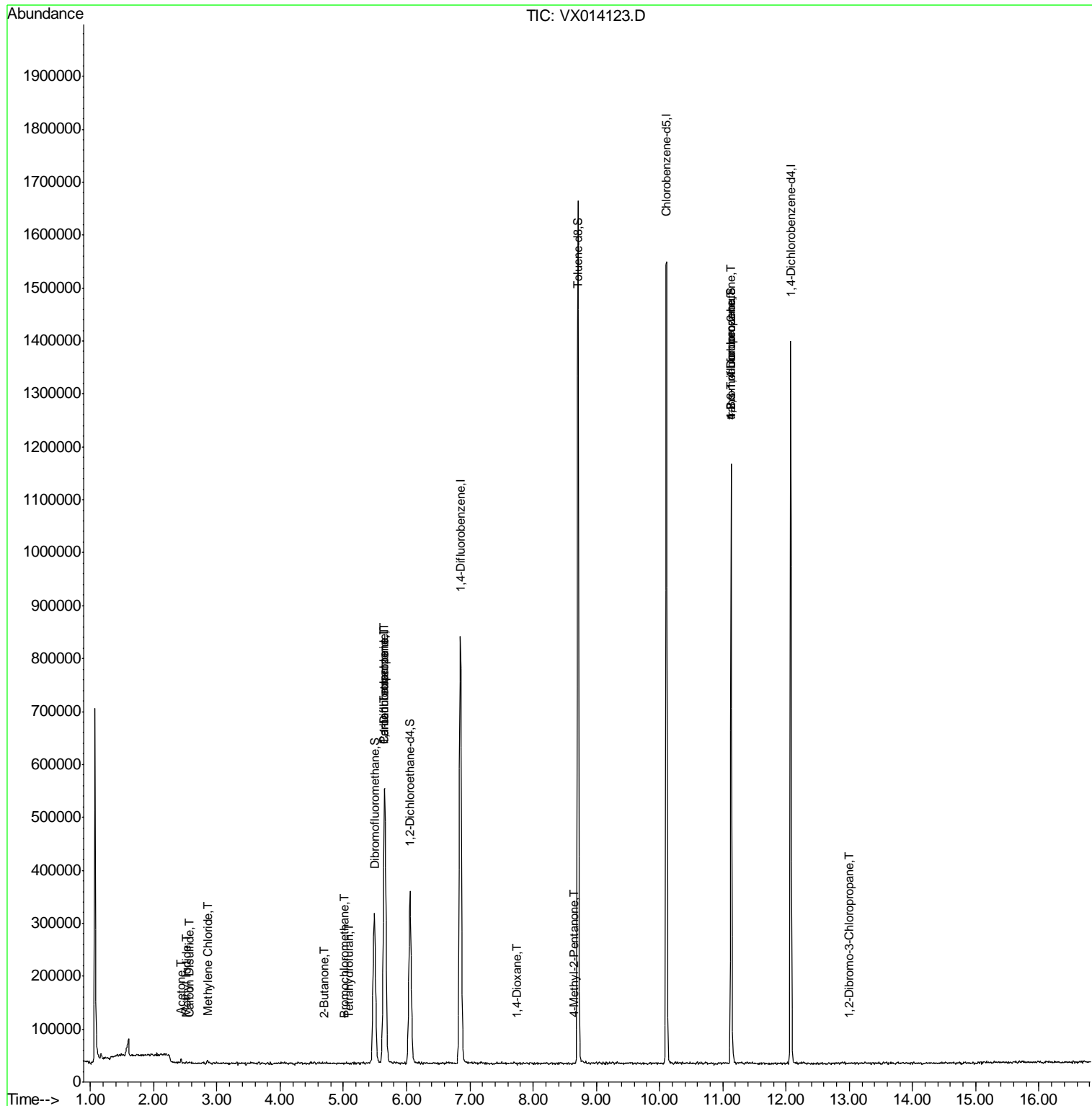
Target Compounds	R.T.	QIon	Response	Conc	Units	Qvalue
10) Methyl Iodide	2.51	142	843	2.739	ug/l #	67
16) Acetone	2.43	43	9724	2.440	ug/l #	85
17) Carbon Disulfide	2.56	76	1695	0.866	ug/l #	65
20) Methylene Chloride	2.85	84	3273	0.522	ug/l #	86
25) 2-Butanone	4.69	43	1533	0.312	ug/l #	49
28) Bromochloromethane	5.02	49	156	0.493	ug/l #	83
29) Tetrahydrofuran	5.08	42	786	0.286	ug/l	90
36) 1,1-Dichloropropene	5.65	75	37365	4.930	ug/l #	50
38) Carbon Tetrachloride	5.65	117	48163	6.975	ug/l #	18
49) 1,4-Dioxane	7.74	88	316	2.289	ug/l #	1
51) 4-Methyl-2-Pentanone	8.64	43	2146	0.247	ug/l	96
76) 1,2,3-Trichloropropane	11.13	75	148044	23.342	ug/l #	39
81) trans-1,4-Dichloro-2-buten	11.13	75	148044	65.882	ug/l #	11
92) 1,2-Dibromo-3-Chloropropan	12.99	75	556	0.352	ug/l #	42

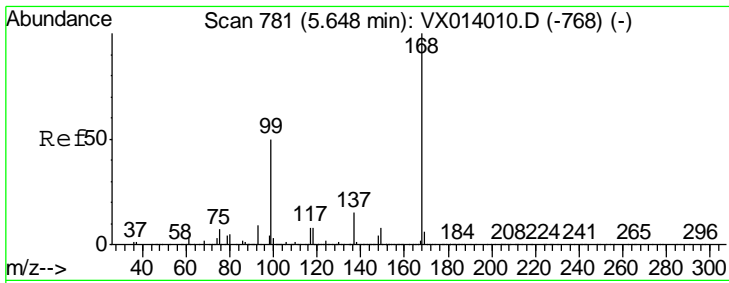
(#) = qualifier out of range (m) = manual integration (+) = signals summed

Data Path : Z:\VOASRV\HPCHEM1\MSVOA X\DATA\VX121919\
 Data File : VX014123.D
 Acq On : 19 Dec 2019 16:14
 Operator : JC/SP
 Sample : K6372-21
 Misc : 5.0mL/MSVOA X/WATER
 ALS Vial : 14 Sample Multiplier: 1

Instrument :
 MSVOA_X
 Client Sampled :

Quant Time: Dec 20 01:00:08 2019
 Quant Method : Z:\VOASRV\HPCHEM1\MSVOA_X\METHOD\82X121319W.M
 Quant Title : SW846 8260
 QLast Update : Tue Dec 17 03:01:07 2019
 Response via : Initial Calibration

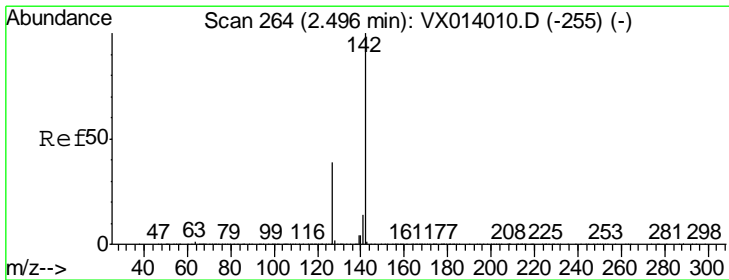
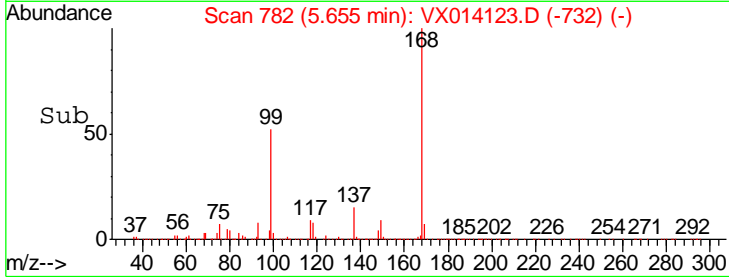
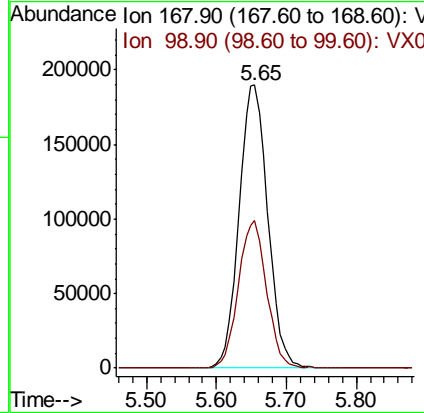
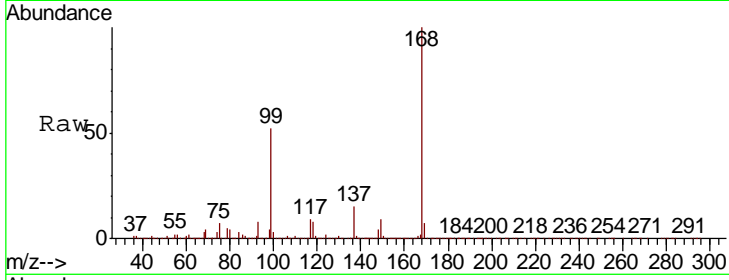




#1
 Pentafluorobenzene
 Concen: 50.000 ug/l
 RT: 5.65 min Scan# 782
 Delta R.T. 0.01 min
 Lab File: VX014123.D
 Acq: 19 Dec 2019 16:14

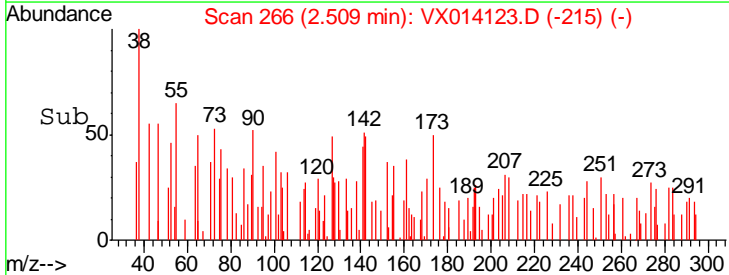
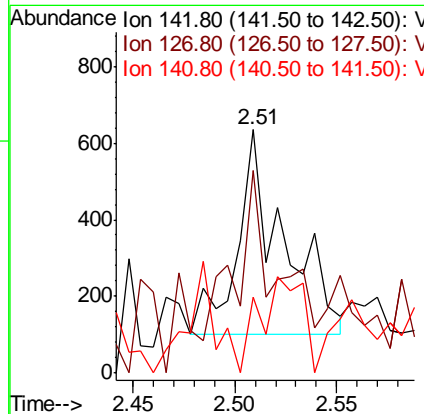
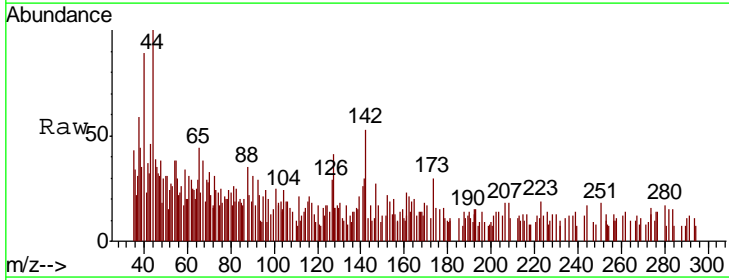
Instrument : MSVOA_X
 Client Sampled :

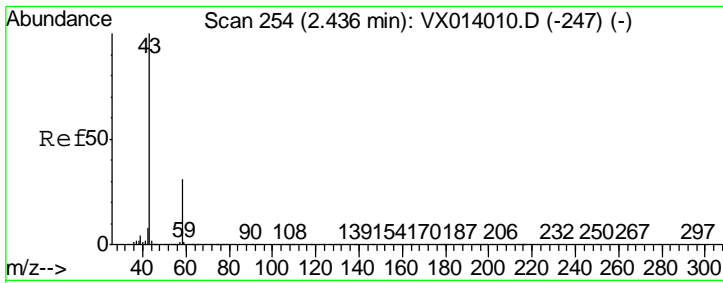
Tgt Ion	Resp	Lower	Upper
168	100		
99	52.1	40.3	60.5



#10
 Methyl Iodide
 Concen: 2.739 ug/l
 RT: 2.51 min Scan# 266
 Delta R.T. 0.01 min
 Lab File: VX014123.D
 Acq: 19 Dec 2019 16:14

Tgt Ion	Resp	Lower	Upper
142	100		
127	51.1	31.6	47.4#
141	43.3	11.6	17.4#

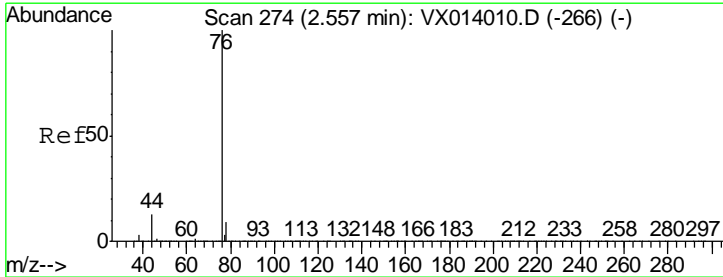
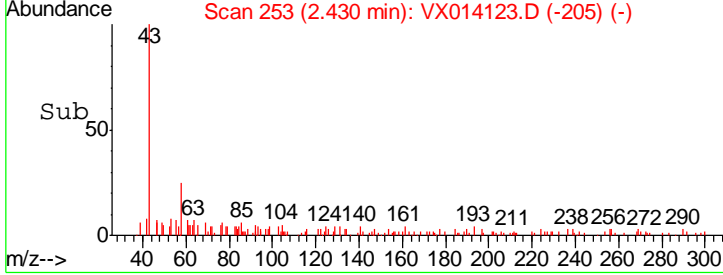
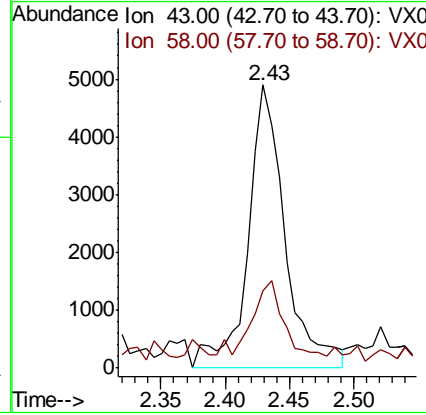
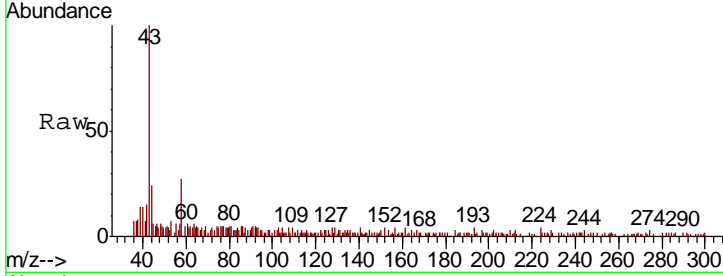




#16
 Acetone
 Concen: 2.440 ug/l
 RT: 2.43 min Scan# 253
 Delta R.T. -0.01 min
 Lab File: VX014123.D
 Acq: 19 Dec 2019 16:14

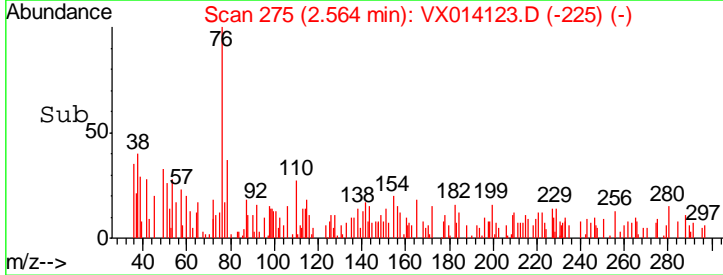
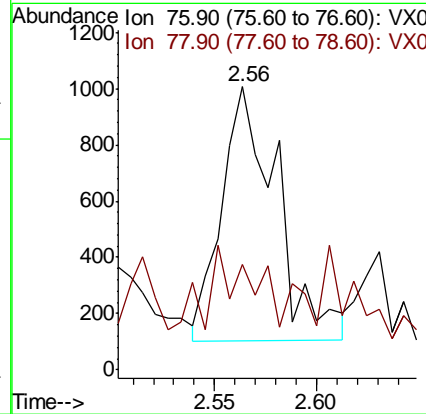
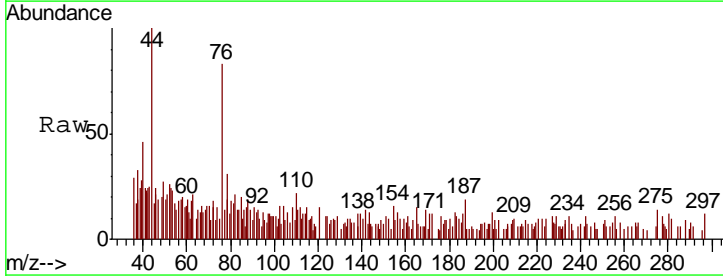
Instrument :
 MSVOA_X
 ClientSampled :

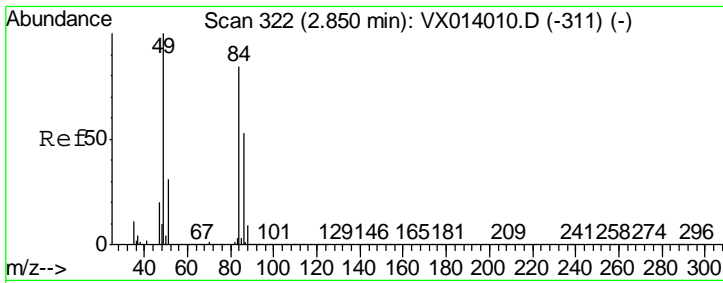
Tgt Ion	Resp	Lower	Upper
43	100		
58	22.6	24.9	37.3#



#17
 Carbon Disulfide
 Concen: 0.866 ug/l
 RT: 2.56 min Scan# 275
 Delta R.T. 0.01 min
 Lab File: VX014123.D
 Acq: 19 Dec 2019 16:14

Tgt Ion	Resp	Lower	Upper
76	100		
78	21.6	7.2	10.8#

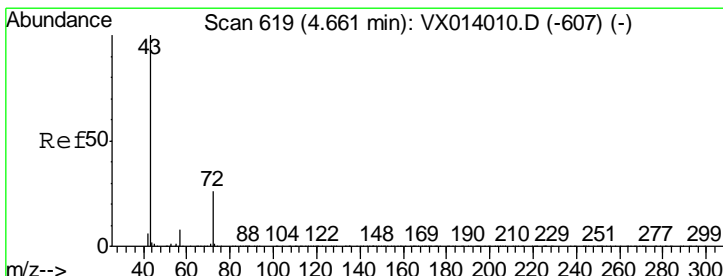
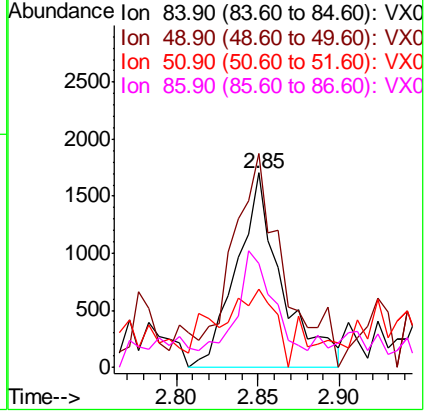
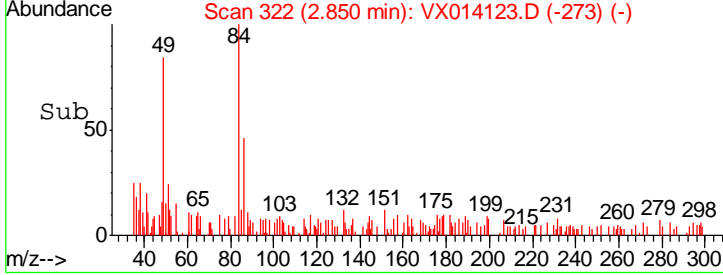
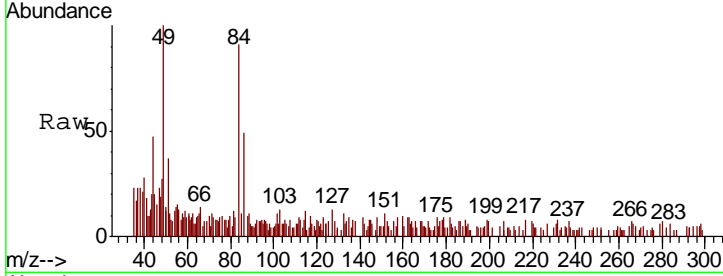




#20
 Methylene Chloride
 Concen: 0.522 ug/l
 RT: 2.85 min Scan# 322
 Delta R.T. 0.00 min
 Lab File: VX014123.D
 Acq: 19 Dec 2019 16:14

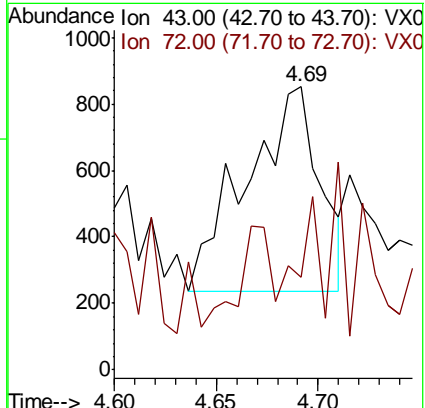
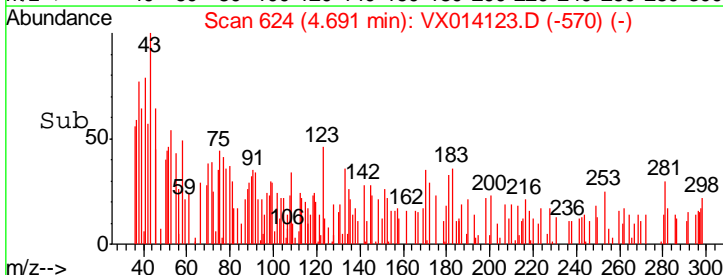
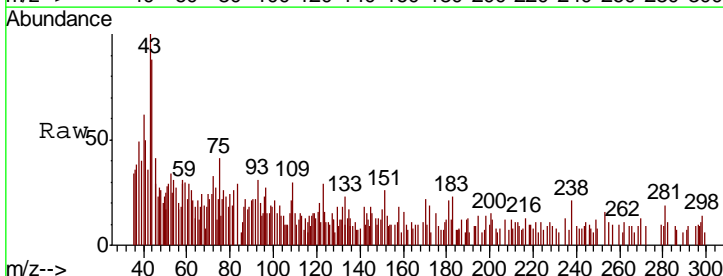
Instrument :
 MSVOA_X
 ClientSampled :

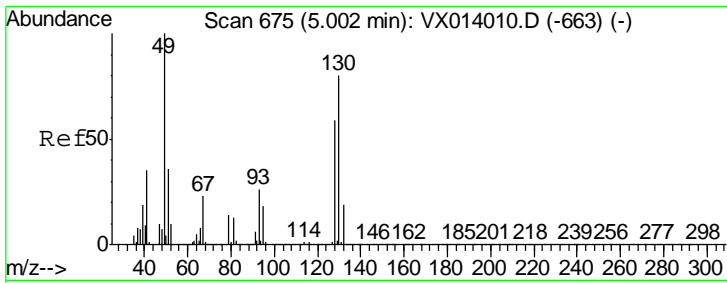
Tgt Ion	Resp	Lower	Upper
84	3273		
49	109.8	95.8	143.6
51	32.8	29.8	44.8
86	43.3	50.8	76.2#



#25
 2-Butanone
 Concen: 0.312 ug/l
 RT: 4.69 min Scan# 624
 Delta R.T. 0.03 min
 Lab File: VX014123.D
 Acq: 19 Dec 2019 16:14

Tgt Ion	Resp	Lower	Upper
43	1533		
72	0.0	21.0	31.4#

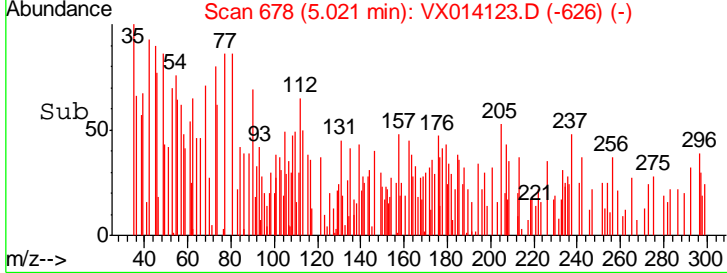
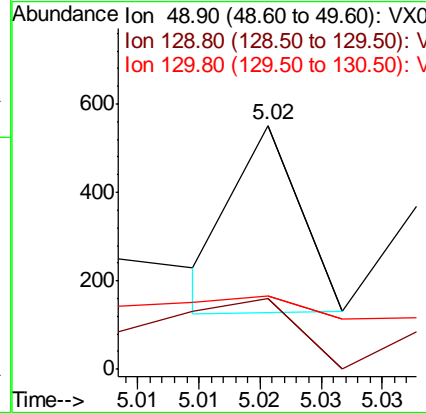
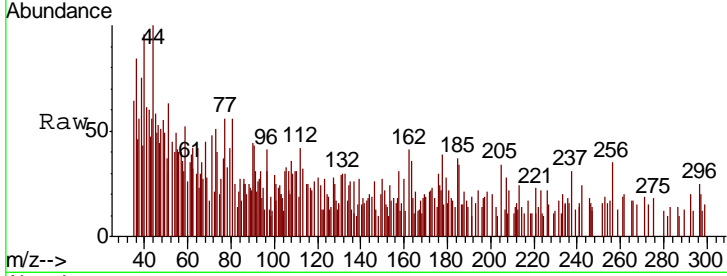




#28
 Bromochloromethane
 Concen: 0.493 ug/l
 RT: 5.02 min Scan# 678
 Delta R.T. 0.02 min
 Lab File: VX014123.D
 Acq: 19 Dec 2019 16:14

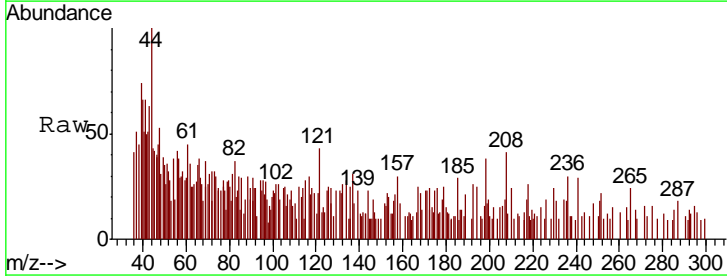
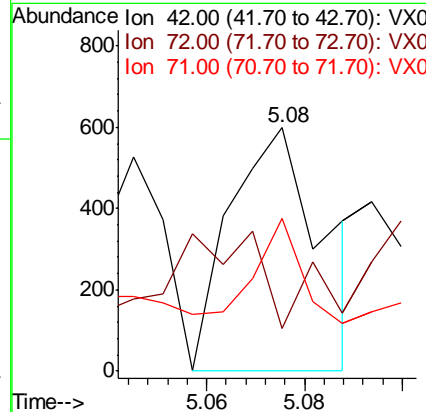
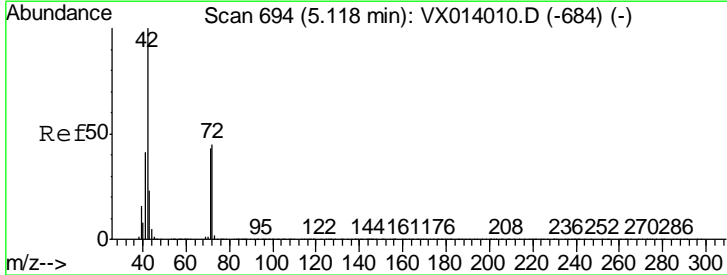
Instrument :
 MSVOA_X
 ClientSampled :

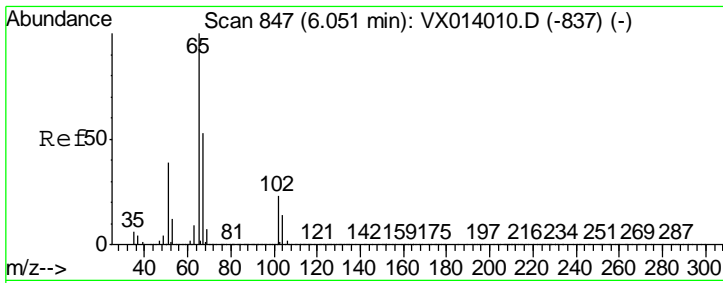
Tgt Ion	Resp	Lower	Upper
49	100		
129	68.6	0.0	5.0#
130	70.5	64.6	97.0



#29
 Tetrahydrofuran
 Concen: 0.286 ug/l
 RT: 5.08 min Scan# 687
 Delta R.T. -0.04 min
 Lab File: VX014123.D
 Acq: 19 Dec 2019 16:14

Tgt Ion	Resp	Lower	Upper
42	100		
72	36.8	35.8	53.8
71	37.2	33.6	50.4

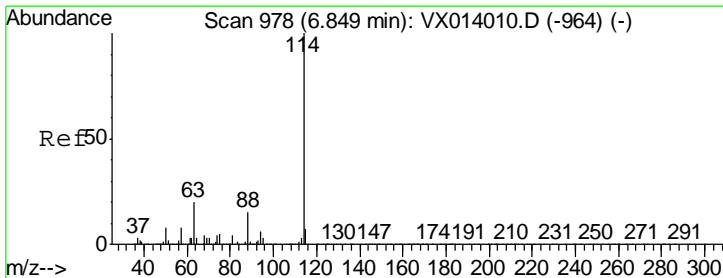
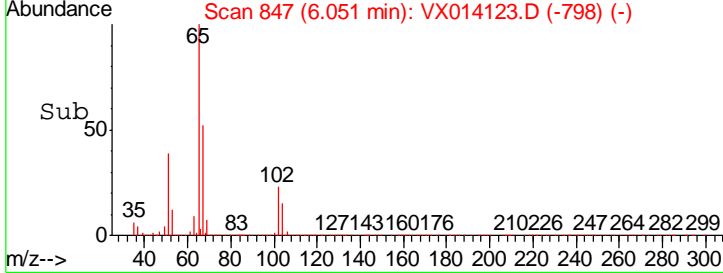
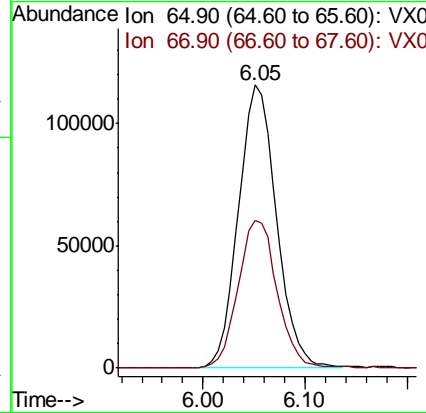
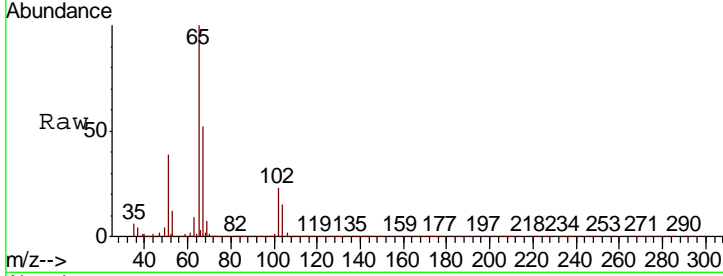




#33
 1,2-Dichloroethane-d4
 Concen: 48.598 ug/l
 RT: 6.05 min Scan# 847
 Delta R.T. 0.00 min
 Lab File: VX014123.D
 Acq: 19 Dec 2019 16:14

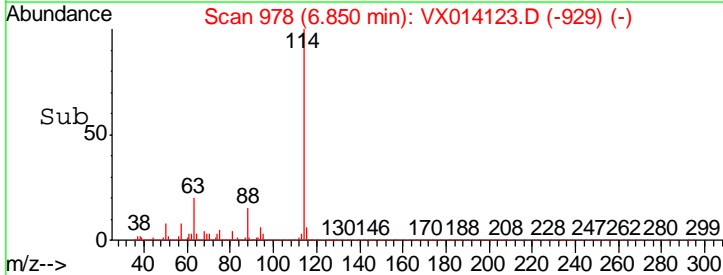
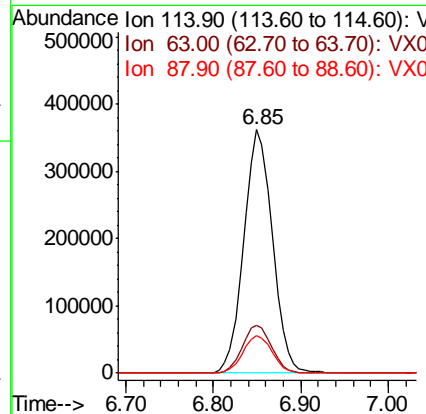
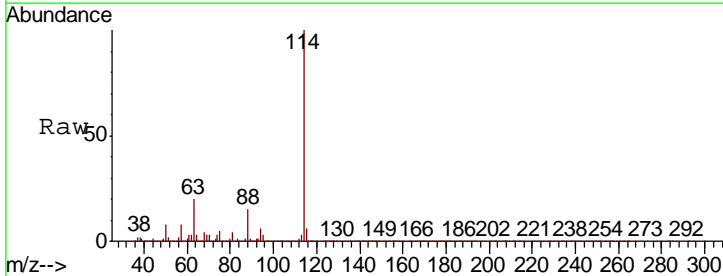
Instrument :
 MSVOA_X
 ClientSampled :

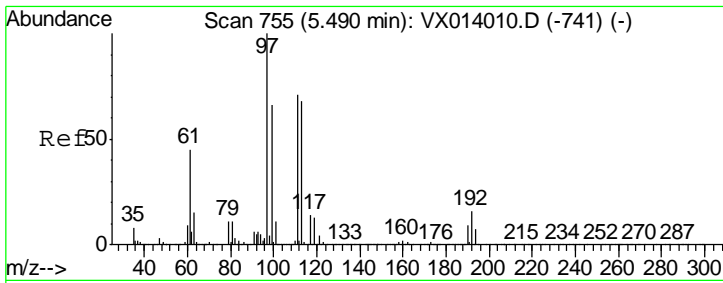
Tgt Ion	Resp	Lower	Upper
65	298333		
67	53.3	0.0	106.4



#34
 1,4-Difluorobenzene
 Concen: 50.000 ug/l
 RT: 6.85 min Scan# 978
 Delta R.T. 0.00 min
 Lab File: VX014123.D
 Acq: 19 Dec 2019 16:14

Tgt Ion	Resp	Lower	Upper
114	826039		
63	19.8	0.0	40.8
88	15.2	0.0	30.4

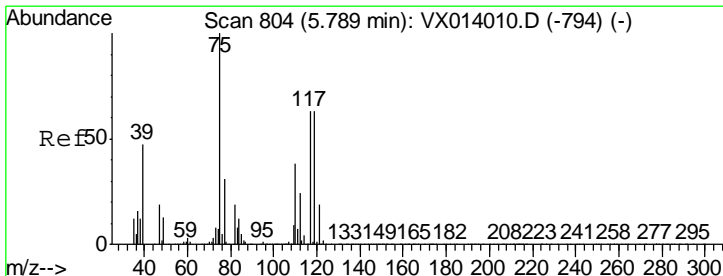
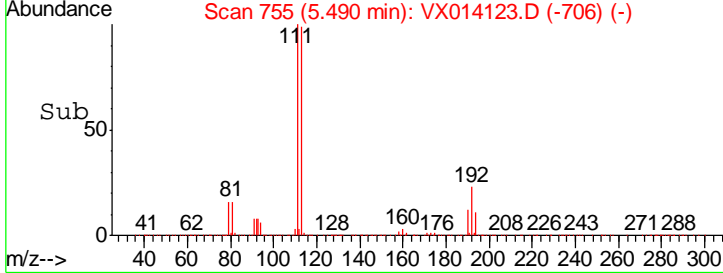
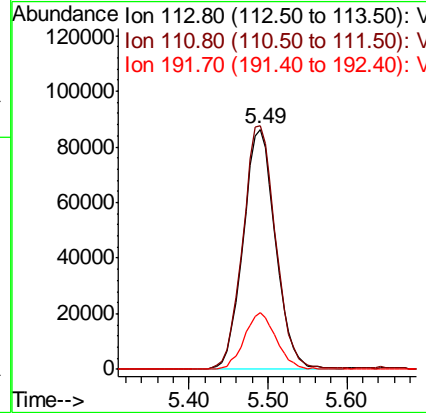
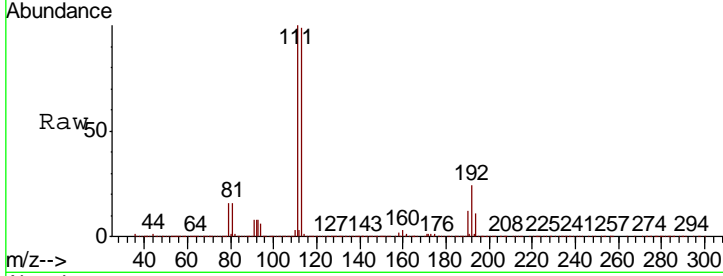




#35
 Dibromofluoromethane
 Concen: 48.853 ug/l
 RT: 5.49 min Scan# 755
 Delta R.T. 0.00 min
 Lab File: VX014123.D
 Acq: 19 Dec 2019 16:14

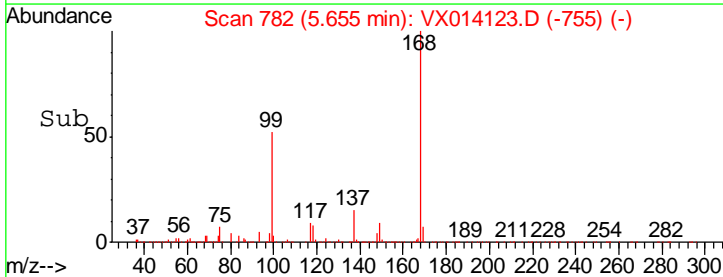
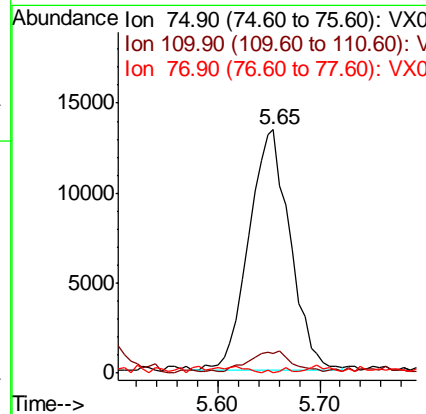
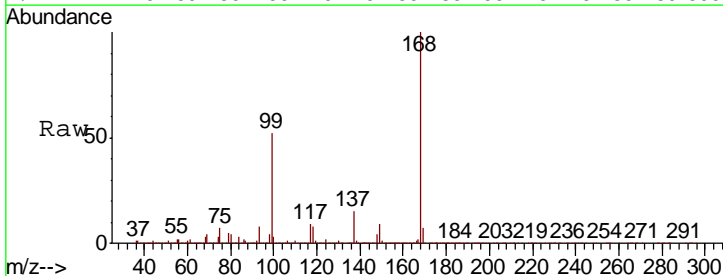
Instrument :
 MSVOA_X
 ClientSampled :

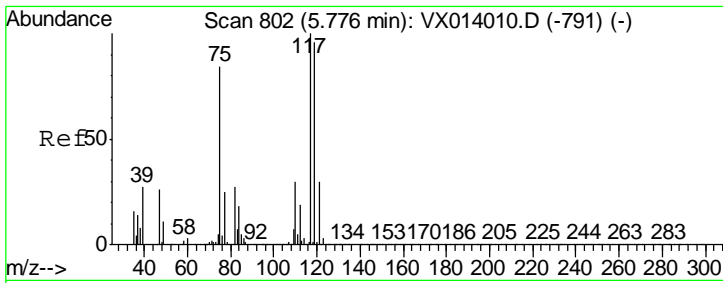
Tgt Ion	Resp	Lower	Upper
113	100		
111	102.8	82.0	123.0
192	23.5	19.3	28.9



#36
 1,1-Dichloropropene
 Concen: 4.930 ug/l
 RT: 5.65 min Scan# 782
 Delta R.T. -0.13 min
 Lab File: VX014123.D
 Acq: 19 Dec 2019 16:14

Tgt Ion	Resp	Lower	Upper
75	100		
110	9.6	18.3	54.9#
77	0.8	24.8	37.2#

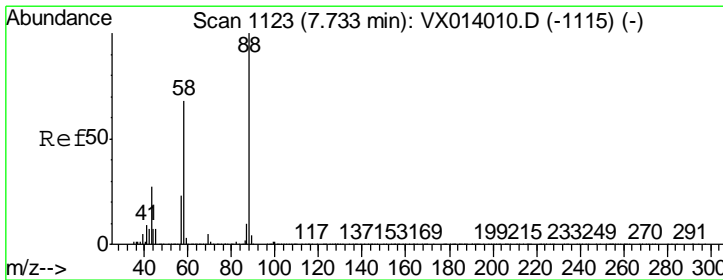
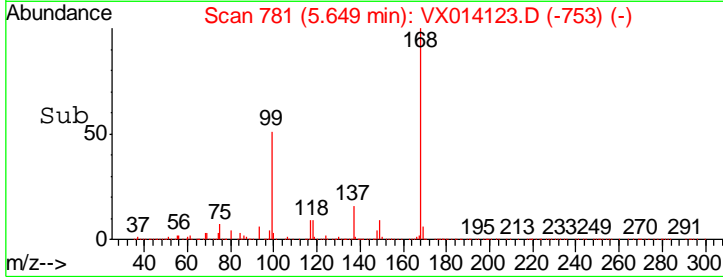
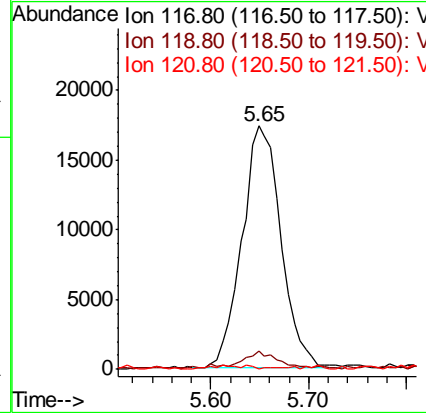
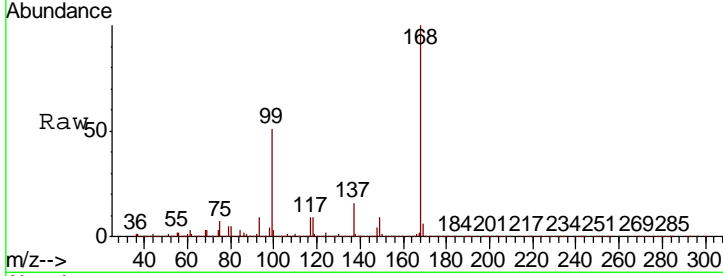




#38
 Carbon Tetrachloride
 Concen: 6.975 ug/l
 RT: 5.65 min Scan# 781
 Delta R.T. -0.13 min
 Lab File: VX014123.D
 Acq: 19 Dec 2019 16:14

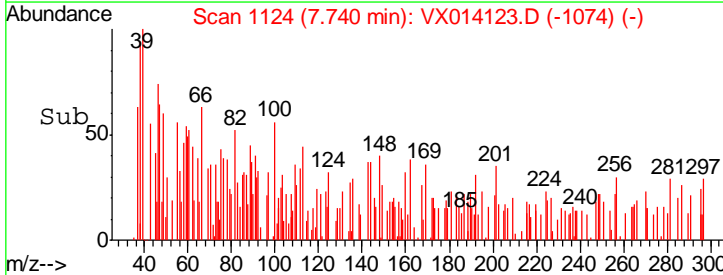
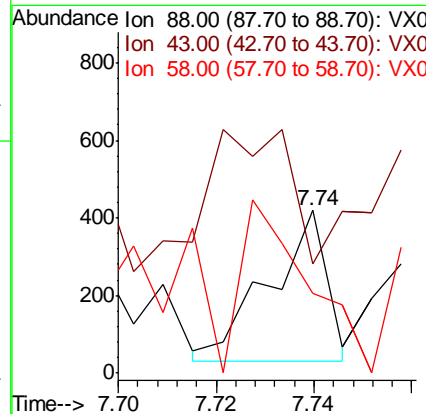
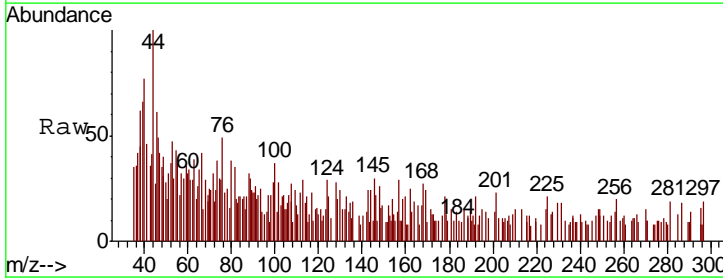
Instrument :
 MSVOA_X
 ClientSampled :

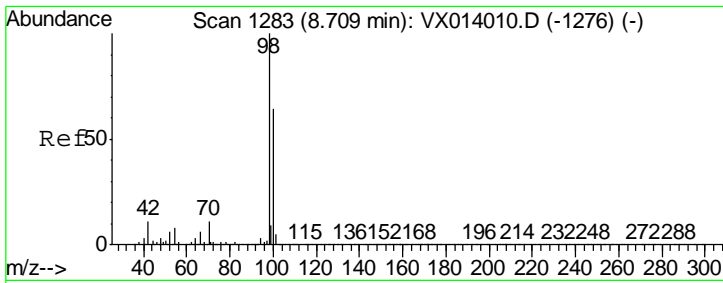
Tgt Ion	Resp	Lower	Upper
117	48163		
119	7.6	76.2	114.4#
121	0.0	23.6	35.4#



#49
 1,4-Dioxane
 Concen: 2.289 ug/l
 RT: 7.74 min Scan# 1124
 Delta R.T. 0.01 min
 Lab File: VX014123.D
 Acq: 19 Dec 2019 16:14

Tgt Ion	Resp	Lower	Upper
88	316		
43	242.4	26.5	39.7#
58	134.2	56.8	85.2#

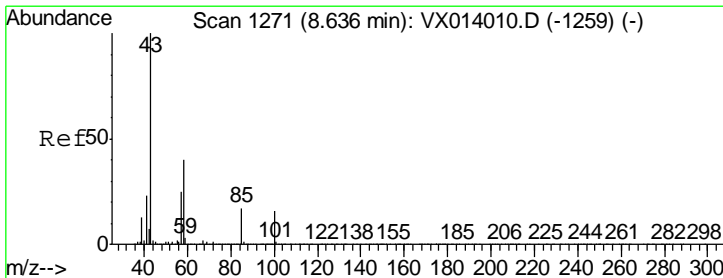
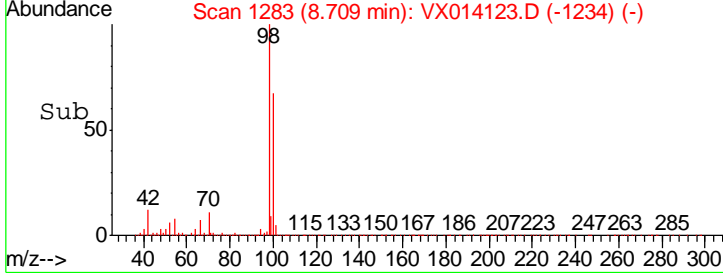
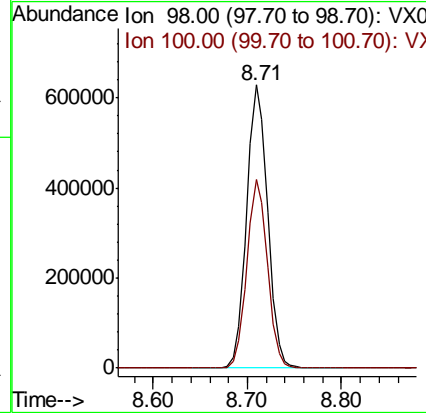
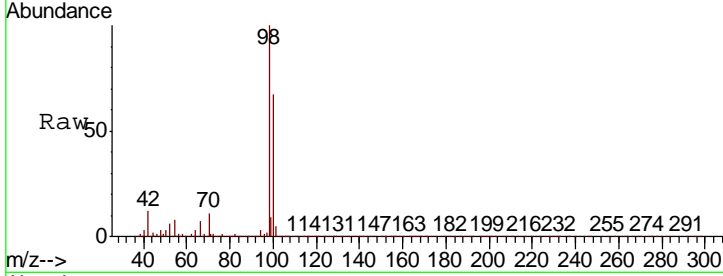




#50
 Toluene-d8
 Concen: 49.669 ug/l
 RT: 8.71 min Scan# 1283
 Delta R.T. 0.00 min
 Lab File: VX014123.D
 Acq: 19 Dec 2019 16:14

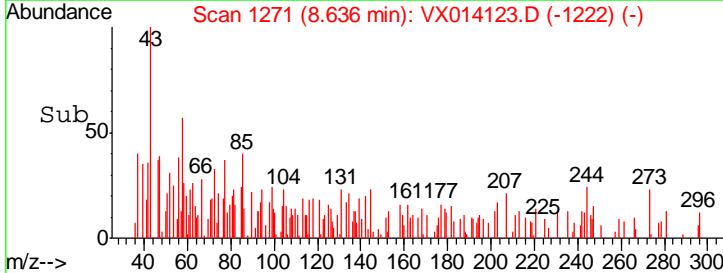
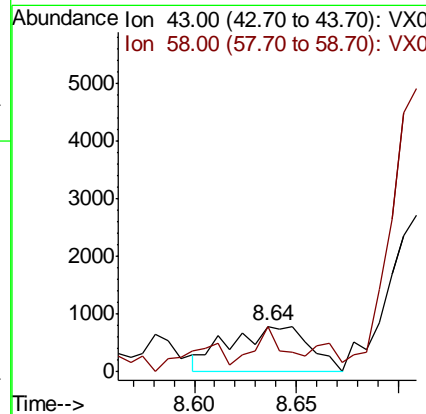
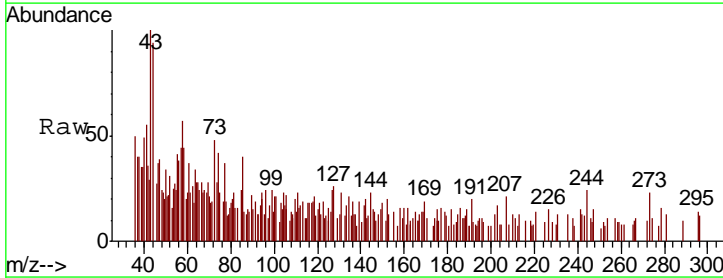
Instrument :
 MSVOA_X
 ClientSampled :

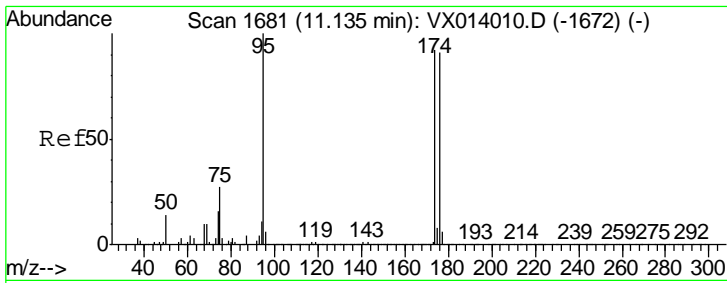
Tgt Ion: 98 Resp: 971006
 Ion Ratio Lower Upper
 98 100
 100 65.7 52.9 79.3



#51
 4-Methyl-2-Pentanone
 Concen: 0.247 ug/l
 RT: 8.64 min Scan# 1271
 Delta R.T. 0.00 min
 Lab File: VX014123.D
 Acq: 19 Dec 2019 16:14

Tgt Ion: 43 Resp: 2146
 Ion Ratio Lower Upper
 43 100
 58 37.4 32.2 48.2

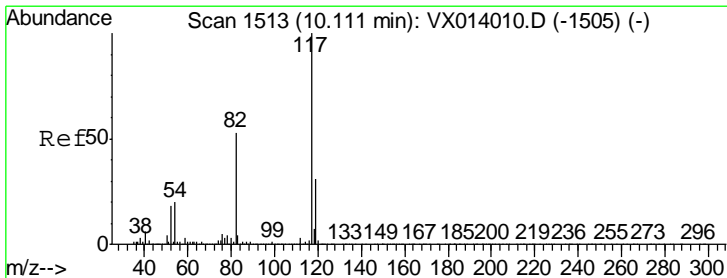
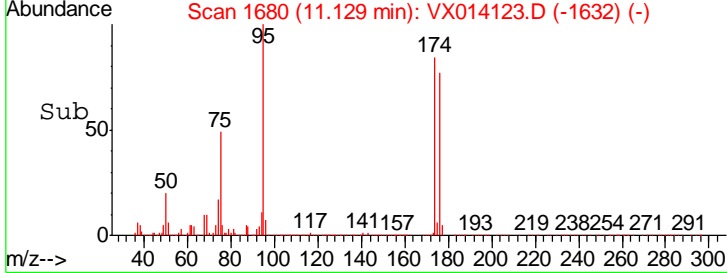
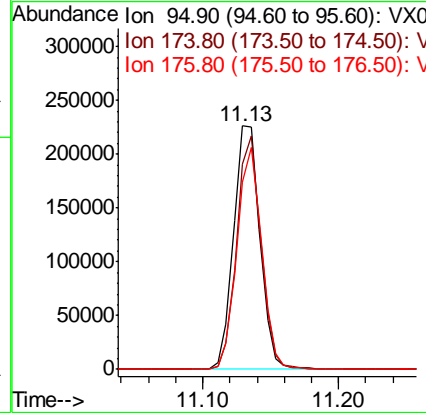
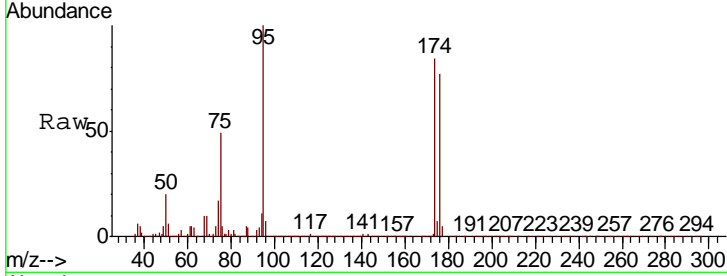




#62
 4-Bromofluorobenzene
 Concen: 42.634 ug/l
 RT: 11.13 min Scan# 1680
 Delta R.T. -0.01 min
 Lab File: VX014123.D
 Acq: 19 Dec 2019 16:14

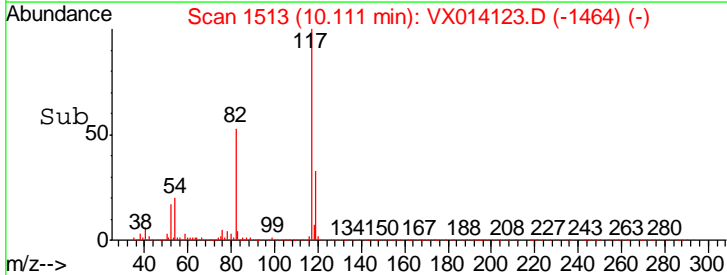
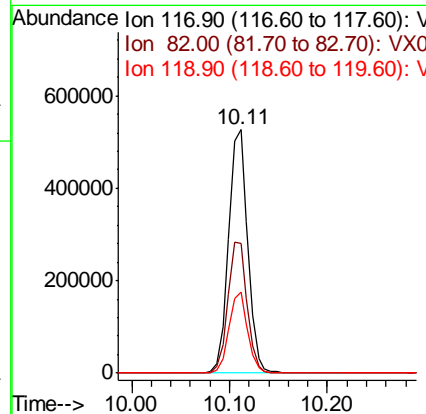
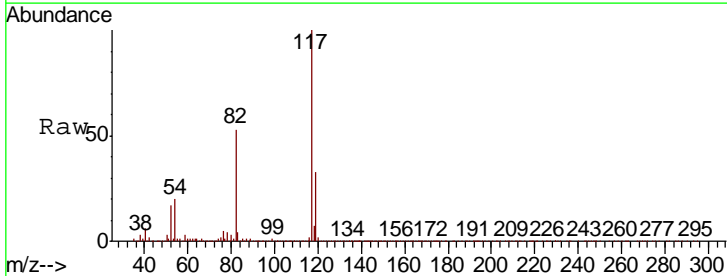
Instrument :
 MSVOA_X
 ClientSampled :

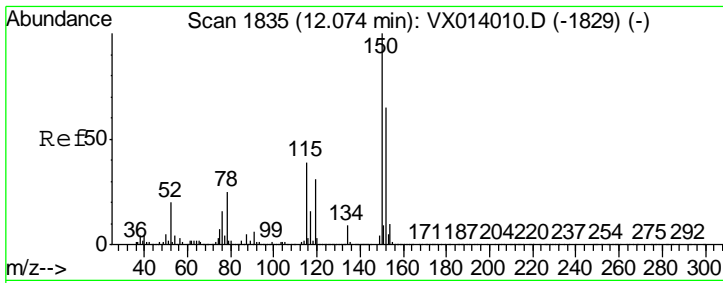
Tgt Ion	Resp	Lower	Upper
95	100		
174	89.2	0.0	175.8
176	86.2	0.0	173.0



#63
 Chlorobenzene-d5
 Concen: 50.000 ug/l
 RT: 10.11 min Scan# 1513
 Delta R.T. 0.00 min
 Lab File: VX014123.D
 Acq: 19 Dec 2019 16:14

Tgt Ion	Resp	Lower	Upper
117	100		
82	53.3	42.2	63.4
119	33.3	25.1	37.7

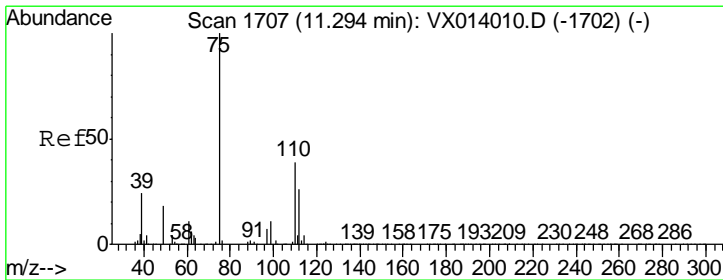
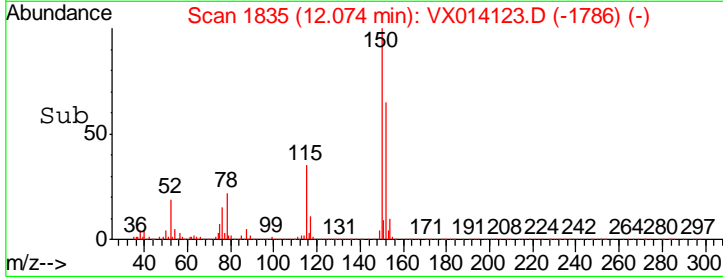
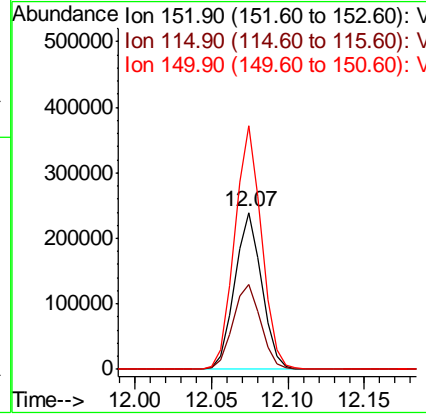
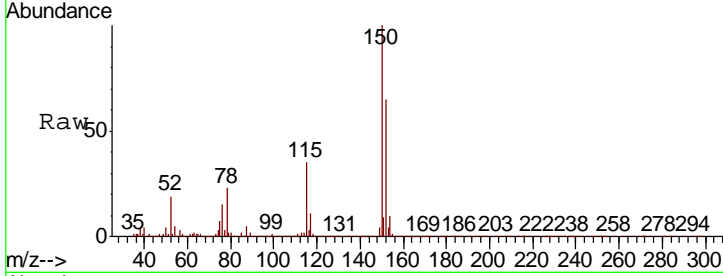




#72
 1,4-Dichlorobenzene-d4
 Concen: 50.000 ug/l
 RT: 12.07 min Scan# 1835
 Delta R.T. 0.00 min
 Lab File: VX014123.D
 Acq: 19 Dec 2019 16:14

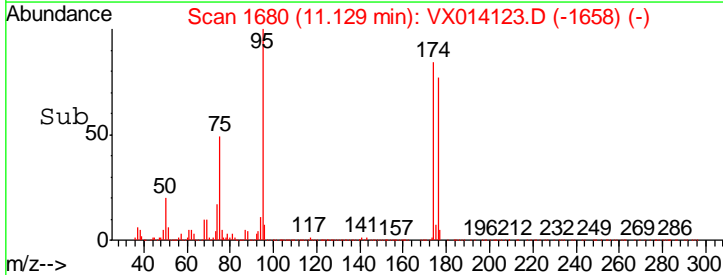
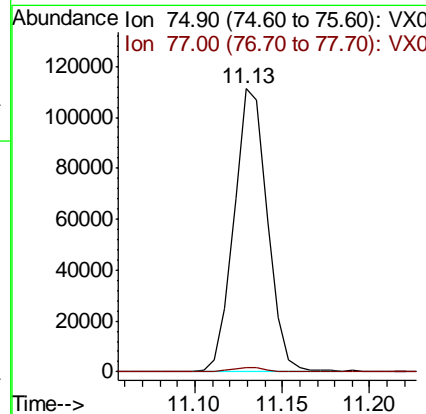
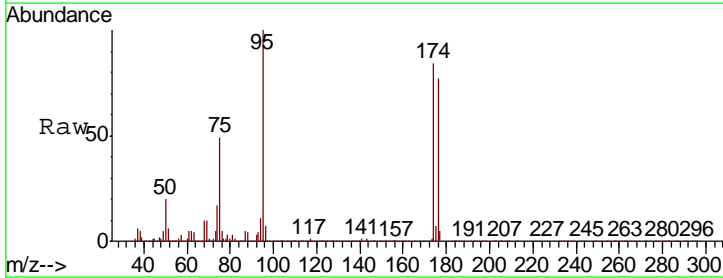
Instrument : MSVOA_X
 ClientSampled :

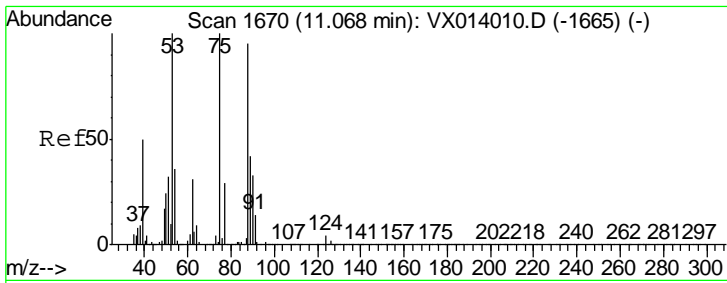
Tgt Ion	Resp	Lower	Upper
152	100		
115	56.0	38.3	114.9
150	154.7	0.0	345.4



#76
 1,2,3-Trichloropropane
 Concen: 23.342 ug/l
 RT: 11.13 min Scan# 1680
 Delta R.T. -0.16 min
 Lab File: VX014123.D
 Acq: 19 Dec 2019 16:14

Tgt Ion	Resp	Lower	Upper
75	100		
77	1.6	19.3	57.8#

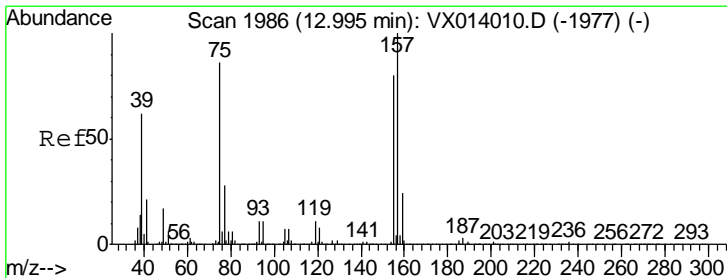
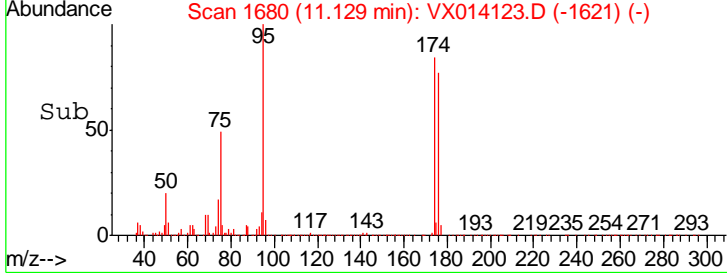
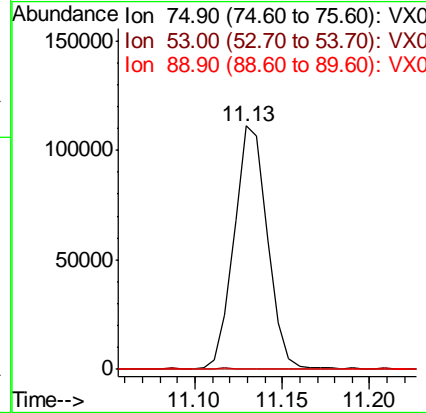
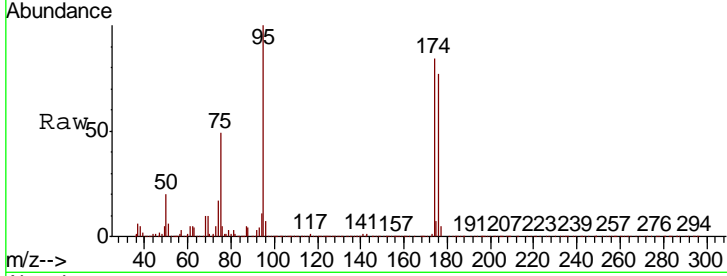




#81
 trans-1,4-Dichloro-2-butene
 Concen: 65.882 ug/l
 RT: 11.13 min Scan# 1680
 Delta R.T. 0.06 min
 Lab File: VX014123.D
 Acq: 19 Dec 2019 16:14

Instrument : MSVOA_X
 Client Sampled :

Tgt Ion	Resp	Lower	Upper
75	100		
53	0.2	76.7	115.1#
89	0.0	34.6	51.8#



#92
 1,2-Dibromo-3-Chloropropane
 Concen: 0.352 ug/l
 RT: 12.99 min Scan# 1986
 Delta R.T. 0.00 min
 Lab File: VX014123.D
 Acq: 19 Dec 2019 16:14

Tgt Ion	Resp	Lower	Upper
75	100		
155	64.7	46.9	140.6
157	33.3	60.8	182.4#

