

Data Path : Z:\VOASRV\HPCHEM1\MSVOA X\DATA\VX121919\
 Data File : VX014118.D
 Acq On : 19 Dec 2019 14:05
 Operator : JC/SP
 Sample : K6373-02
 Misc : 5.0mL/MSVOA X/WATER
 ALS Vial : 9 Sample Multiplier: 1

Instrument :
 MSVOA_X
 ClientSampleId :
 391218758

Quant Time: Dec 20 02:44:26 2019
 Quant Method : Z:\VOASRV\HPCHEM1\MSVOA X\METHOD\624X121219W.M
 Quant Title : METHOD 624 VOLATILE ORGANIC ANALYSIS
 QLast Update : Fri Dec 13 01:35:34 2019
 Response via : Initial Calibration

Internal Standards	R.T.	QIon	Response	Conc	Units	Dev(Min)
1) Bromochloromethane	5.01	128	86192	30.00	ug/l	0.00
28) 1,4-Difluorobenzene	6.85	114	464496	30.00	ug/l	0.00
57) Chlorobenzene-d5	10.11	117	405008	30.00	ug/l	0.00

System Monitoring Compounds

27) 1,2-Dichloroethane-d4	6.05	65	182572	29.58	ug/l	0.00
Spiked Amount	30.000	Range	50 - 169	Recovery	=	98.60%
60) 4-Bromofluorobenzene	11.13	95	176981	27.06	ug/l	0.00
Spiked Amount	30.000	Range	56 - 143	Recovery	=	90.20%
63) Toluene-d8	8.71	98	552487	30.52	ug/l	0.00
Spiked Amount	30.000	Range	66 - 137	Recovery	=	101.73%

Target Compounds

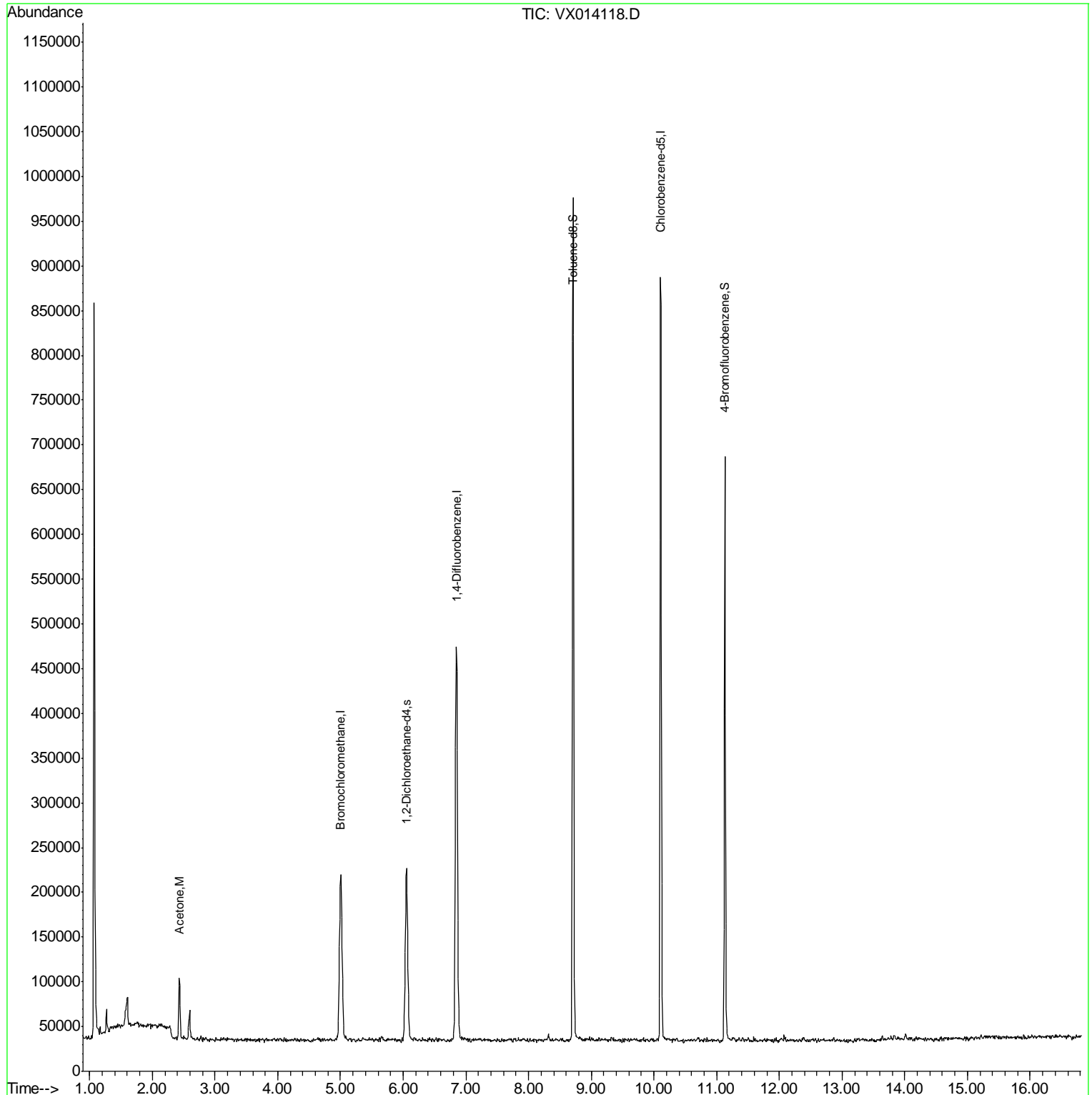
Target Compounds	R.T.	QIon	Response	Conc	Units	Ovalue
15) Acetone	2.43	58	22990	26.792	ug/l	86

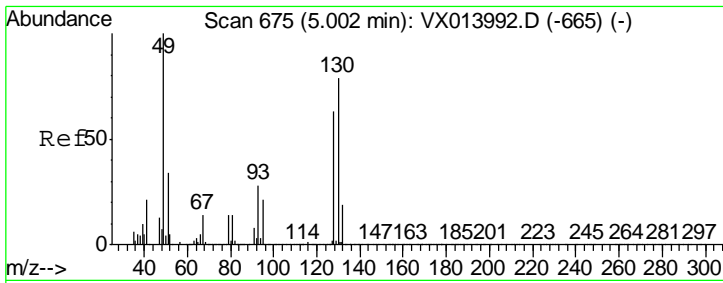
(#) = qualifier out of range (m) = manual integration (+) = signals summed

Data Path : Z:\VOASRV\HPCHEM1\MSVOA X\DATA\VX121919\
Data File : VX014118.D
Acq On : 19 Dec 2019 14:05
Operator : JC/SP
Sample : K6373-02
Misc : 5.0mL/MSVOA X/WATER
ALS Vial : 9 Sample Multiplier: 1

Instrument :
MSVOA_X
ClientSampled :
391218758

Quant Time: Dec 20 02:44:26 2019
Quant Method : Z:\VOASRV\HPCHEM1\MSVOA X\METHOD\624X121219W.M
Quant Title : METHOD 624 VOLATILE ORGANIC ANALYSIS
QLast Update : Fri Dec 13 01:35:34 2019
Response via : Initial Calibration

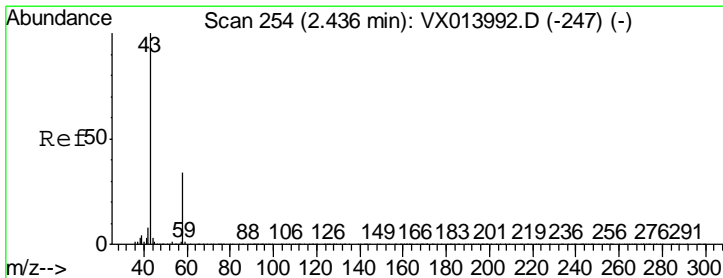
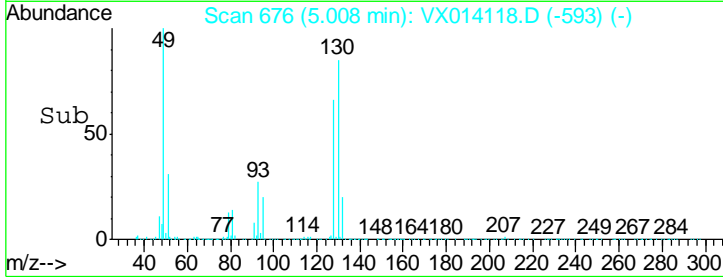
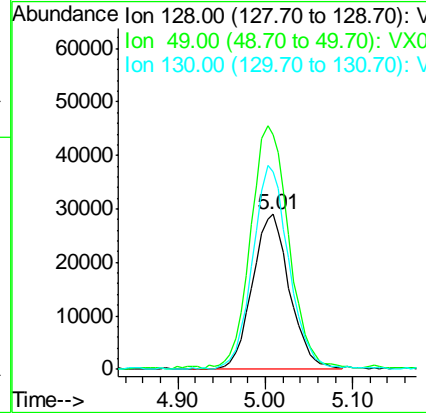
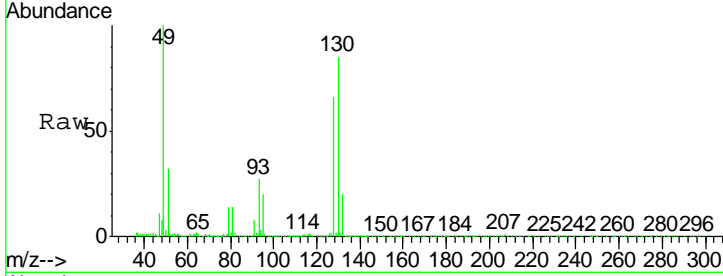




#1
 Bromochloromethane
 Concen: 30.000 ug/l
 RT: 5.01 min Scan# 676
 Delta R.T. 0.01 min
 Lab File: VX014118.D
 Acq: 19 Dec 2019 14:05

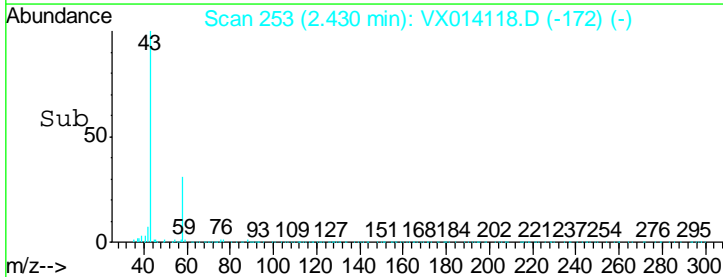
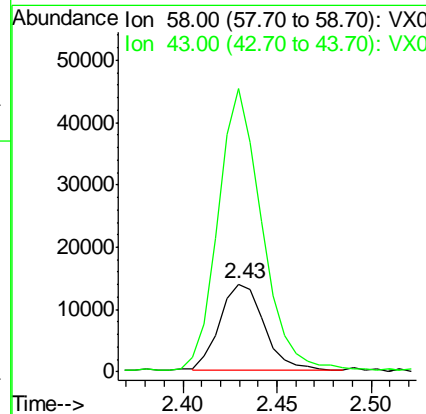
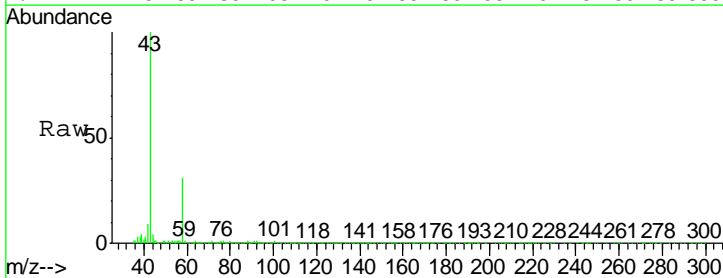
Instrument :
 MSVOA_X
 ClientSampled :
 391218758

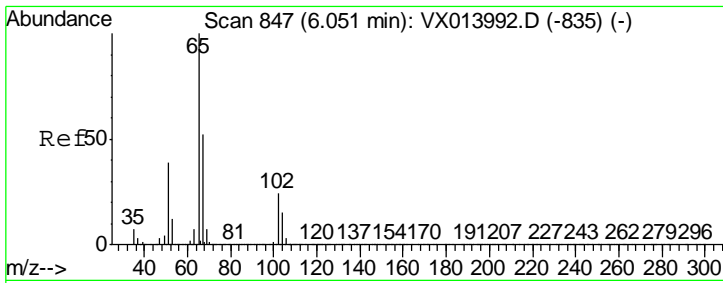
Tgt Ion	Resp	Lower	Upper
128	86192		
49	159.3	0.0	405.0
130	127.2	0.0	321.5



#15
 Acetone
 Concen: 26.792 ug/l
 RT: 2.43 min Scan# 253
 Delta R.T. -0.01 min
 Lab File: VX014118.D
 Acq: 19 Dec 2019 14:05

Tgt Ion	Resp	Lower	Upper
58	22990		
43	322.7	236.3	354.5

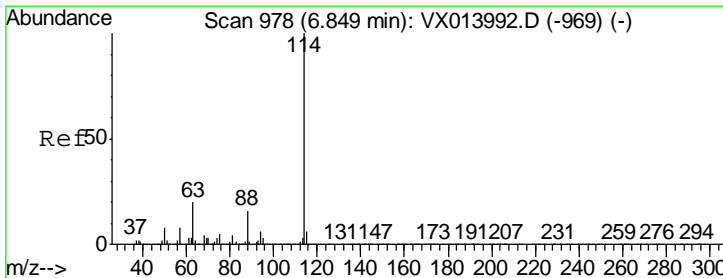
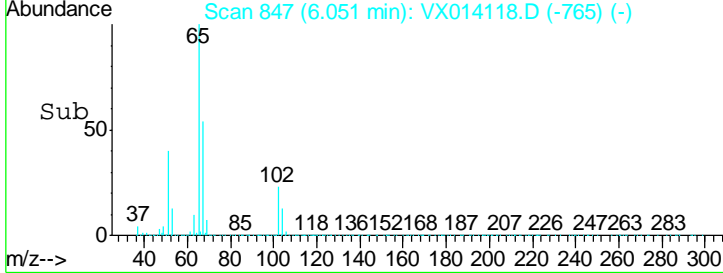
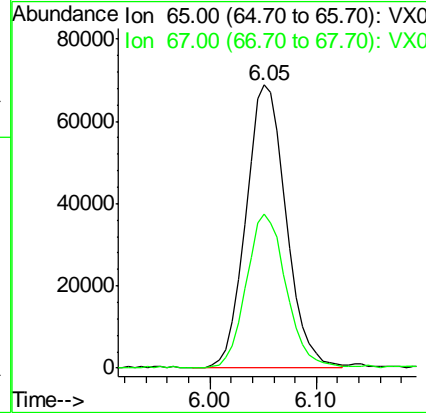
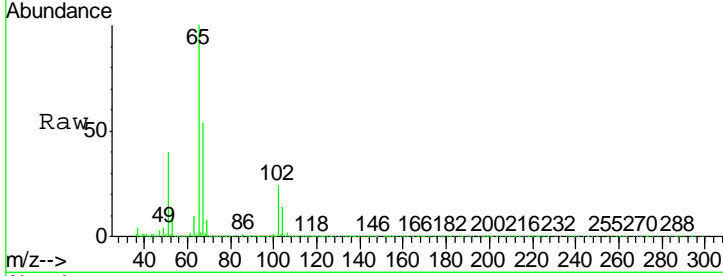




#27
 1,2-Dichloroethane-d4
 Concen: 29.577 ug/l
 RT: 6.05 min Scan# 847
 Delta R.T. 0.00 min
 Lab File: VX014118.D
 Acq: 19 Dec 2019 14:05

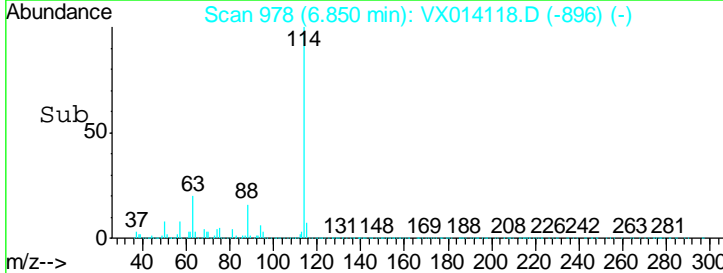
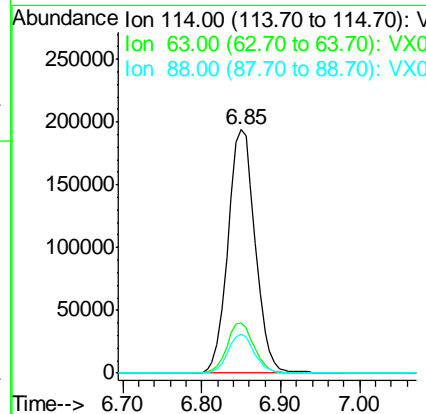
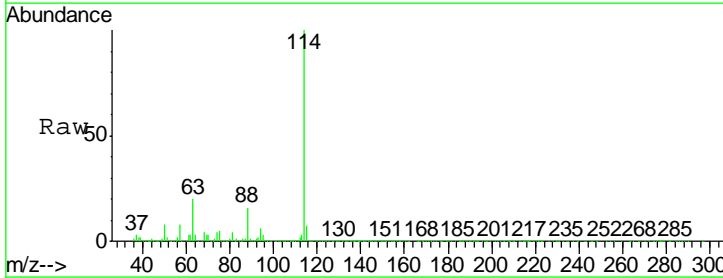
Instrument :
 MSVOA_X
 ClientSampled :
 391218758

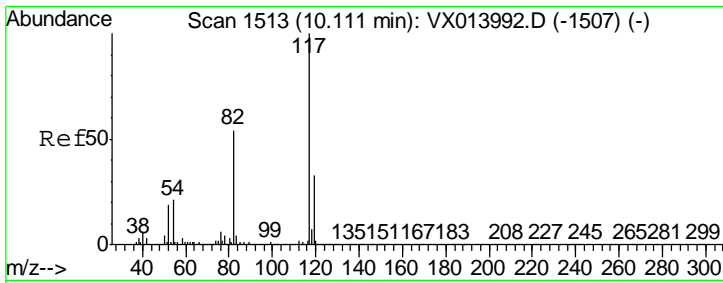
Tgt Ion	Resp	Lower	Upper
65	182572		
67	53.7	43.1	64.7



#28
 1,4-Difluorobenzene
 Concen: 30.000 ug/l
 RT: 6.85 min Scan# 978
 Delta R.T. 0.00 min
 Lab File: VX014118.D
 Acq: 19 Dec 2019 14:05

Tgt Ion	Resp	Lower	Upper
114	464496		
63	20.4	16.1	24.1
88	15.7	12.5	18.7

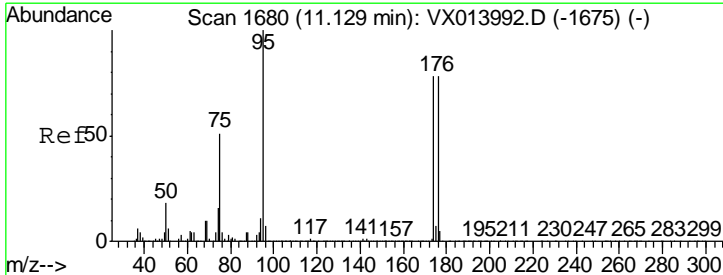
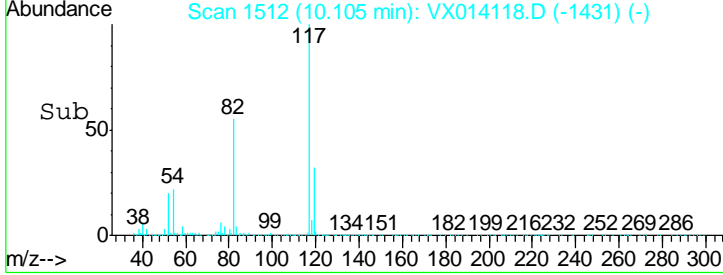
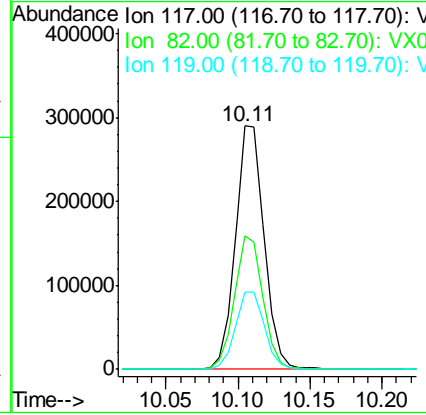
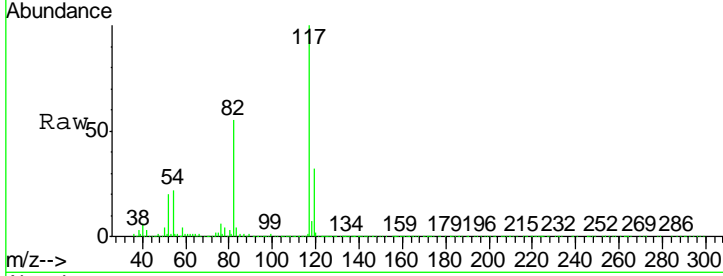




#57
 Chlorobenzene-d5
 Concen: 30.000 ug/l
 RT: 10.11 min Scan# 1512
 Delta R.T. -0.01 min
 Lab File: VX014118.D
 Acq: 19 Dec 2019 14:05

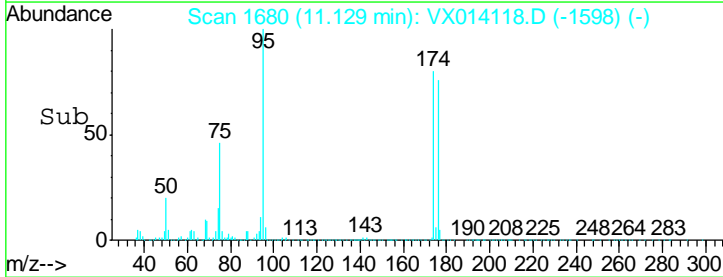
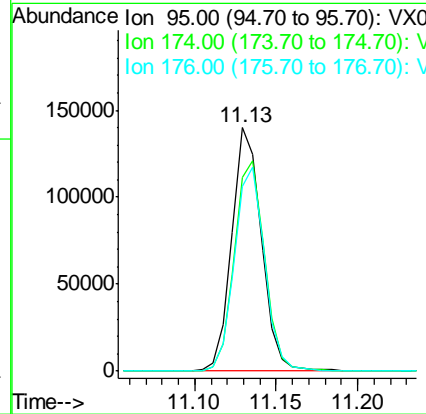
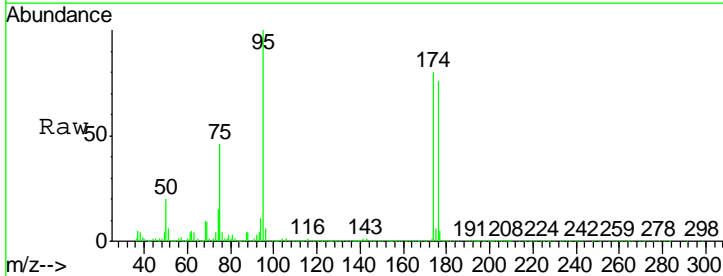
Instrument :
 MSVOA_X
 ClientSampled :
 391218758

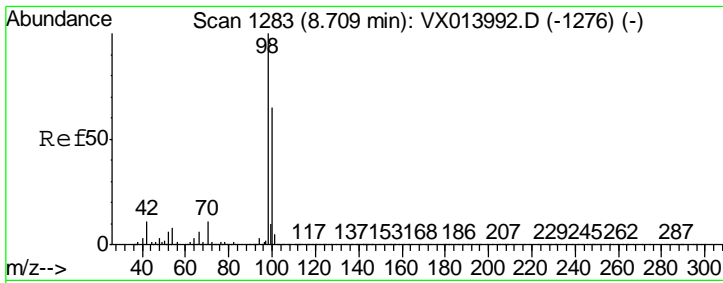
Tgt Ion	Resp	Lower	Upper
117	405008		
82	54.3	43.8	65.6
119	32.3	25.8	38.6



#60
 4-Bromofluorobenzene
 Concen: 27.061 ug/l
 RT: 11.13 min Scan# 1680
 Delta R.T. 0.00 min
 Lab File: VX014118.D
 Acq: 19 Dec 2019 14:05

Tgt Ion	Resp	Lower	Upper
95	176981		
174	88.5	70.2	105.2
176	85.3	68.3	102.5





#63
 Toluene-d8
 Concen: 30.519 ug/l
 RT: 8.71 min Scan# 1283
 Delta R.T. 0.00 min
 Lab File: VX014118.D
 Acq: 19 Dec 2019 14:05

Instrument :
 MSVOA_X
 ClientSampled :
 391218758

Tot Ion	Ion	Ratio	Lower	Upper
98	100			
100	65.8	52.2	78.2	

