

Data Path : Z:\VOASRV\HPCHEM1\MSVOA X\DATA\VX121919\  
 Data File : VX014158.D  
 Acq On : 20 Dec 2019 07:12  
 Operator : JC/SP  
 Sample : K6372-19  
 Misc : 5.0mL/MSVOA X/WATER  
 ALS Vial : 52 Sample Multiplier: 1

Instrument :  
 MSVOA\_X  
 ClientSampleId :  
 MW-11

Quant Time: Dec 20 07:55:46 2019  
 Quant Method : Z:\VOASRV\HPCHEM1\MSVOA\_X\METHOD\82X121319W.M  
 Quant Title : SW846 8260  
 QLast Update : Tue Dec 17 03:01:07 2019  
 Response via : Initial Calibration

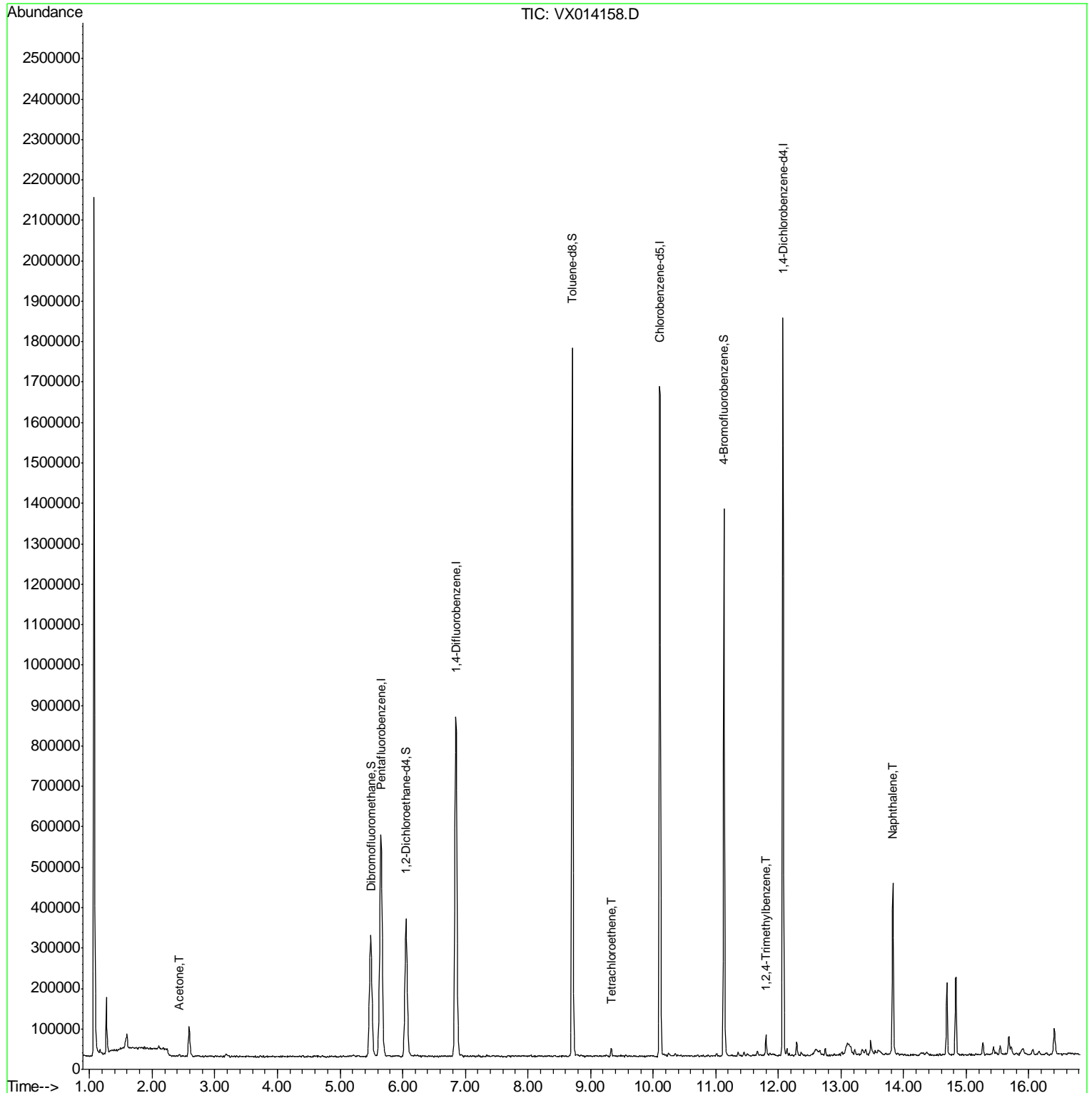
| Internal Standards          | R.T.   | QIon | Response | Conc   | Units   | Dev(Min) |
|-----------------------------|--------|------|----------|--------|---------|----------|
| 1) Pentafluorobenzene       | 5.65   | 168  | 572781   | 50.00  | ug/l    | 0.00     |
| 34) 1,4-Difluorobenzene     | 6.85   | 114  | 879746   | 50.00  | ug/l    | 0.00     |
| 63) Chlorobenzene-d5        | 10.11  | 117  | 803288   | 50.00  | ug/l    | 0.00     |
| 72) 1,4-Dichlorobenzene-d4  | 12.07  | 152  | 379194   | 50.00  | ug/l    | 0.00     |
| System Monitoring Compounds |        |      |          |        |         |          |
| 33) 1,2-Dichloroethane-d4   | 6.06   | 65   | 317355   | 48.89  | ug/l    | 0.00     |
| Spiked Amount               | 50.000 |      | Recovery | =      | 97.78%  |          |
| 35) Dibromofluoromethane    | 5.49   | 113  | 260847   | 48.78  | ug/l    | 0.00     |
| Spiked Amount               | 50.000 |      | Recovery | =      | 97.56%  |          |
| 50) Toluene-d8              | 8.71   | 98   | 1042115  | 50.05  | ug/l    | 0.00     |
| Spiked Amount               | 50.000 |      | Recovery | =      | 100.10% |          |
| 62) 4-Bromofluorobenzene    | 11.13  | 95   | 365747   | 48.06  | ug/l    | 0.00     |
| Spiked Amount               | 50.000 |      | Recovery | =      | 96.12%  |          |
| Target Compounds            |        |      |          |        |         |          |
| 16) Acetone                 | 2.44   | 43   | 6844     | 1.624  | ug/l    | 95       |
| 64) Tetrachloroethene       | 9.33   | 164  | 4468     | 0.629  | ug/l    | 95       |
| 84) 1,2,4-Trimethylbenzene  | 11.81  | 105  | 22661    | 1.007  | ug/l    | 99       |
| 95) Naphthalene             | 13.83  | 128  | 294874   | 11.915 | ug/l    | 100      |

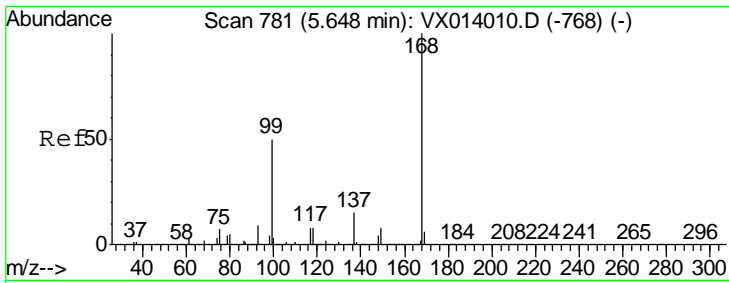
(#) = qualifier out of range (m) = manual integration (+) = signals summed

Data Path : Z:\VOASRV\HPCHEM1\MSVOA X\DATA\VX121919\  
Data File : VX014158.D  
Acq On : 20 Dec 2019 07:12  
Operator : JC/SP  
Sample : K6372-19  
Misc : 5.0mL/MSVOA X/WATER  
ALS Vial : 52 Sample Multiplier: 1

Instrument :  
MSVOA\_X  
ClientSampleId :  
MW-11

Quant Time: Dec 20 07:55:46 2019  
Quant Method : Z:\VOASRV\HPCHEM1\MSVOA\_X\METHOD\82X121319W.M  
Quant Title : SW846 8260  
QLast Update : Tue Dec 17 03:01:07 2019  
Response via : Initial Calibration

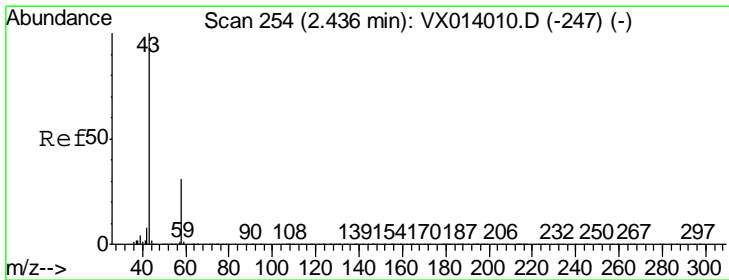
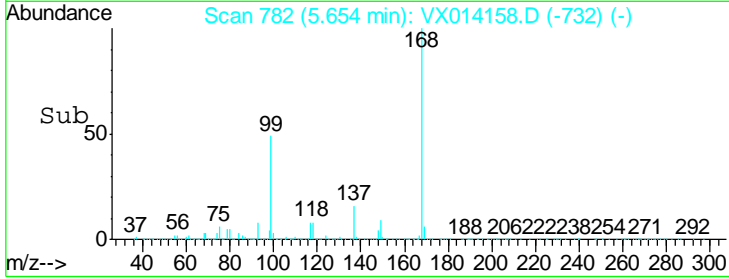
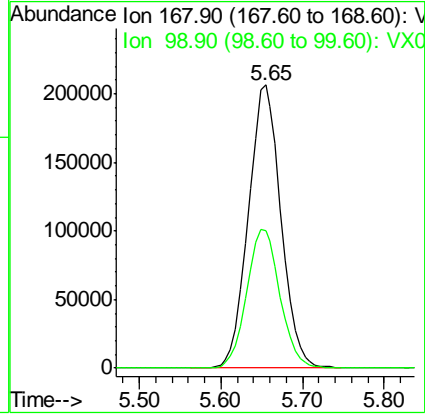
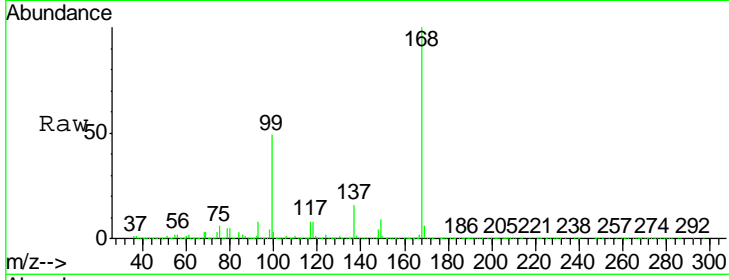




#1  
 Pentafluorobenzene  
 Concen: 50.000 ug/l  
 RT: 5.65 min Scan# 782  
 Delta R.T. 0.01 min  
 Lab File: VX014158.D  
 Acq: 20 Dec 2019 07:12

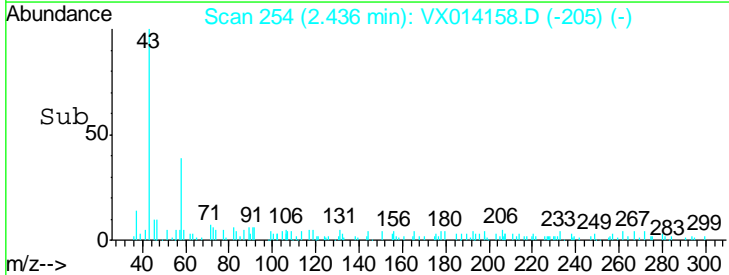
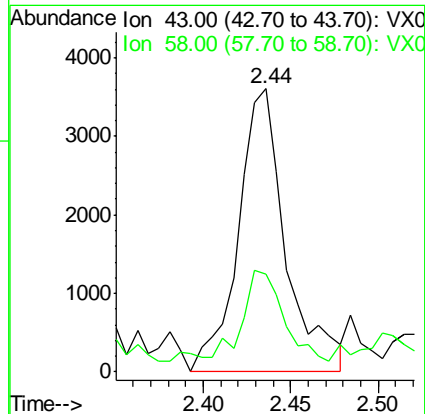
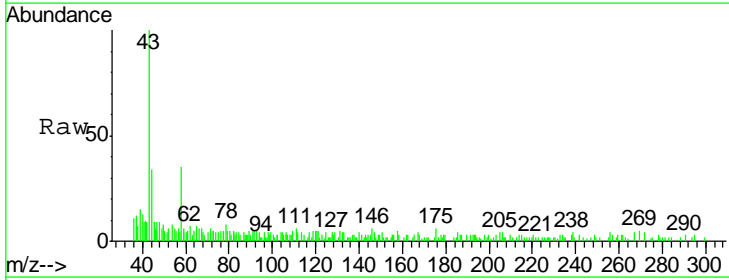
Instrument : MSVOA\_X  
 ClientSampled : MW-11

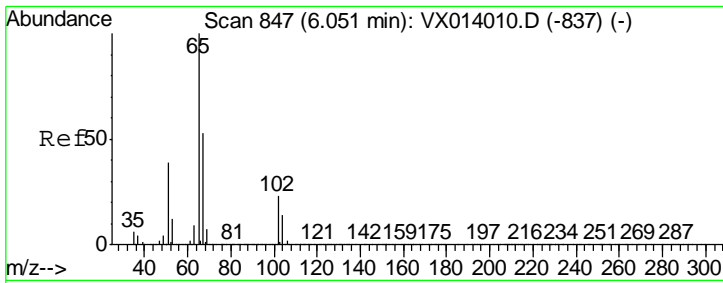
| Tgt Ion | Resp | Lower | Upper |
|---------|------|-------|-------|
| 168     | 100  |       |       |
| 99      | 48.5 | 40.3  | 60.5  |



#16  
 Acetone  
 Concen: 1.624 ug/l  
 RT: 2.44 min Scan# 254  
 Delta R.T. 0.00 min  
 Lab File: VX014158.D  
 Acq: 20 Dec 2019 07:12

| Tgt Ion | Resp | Lower | Upper |
|---------|------|-------|-------|
| 43      | 100  |       |       |
| 58      | 28.1 | 24.9  | 37.3  |

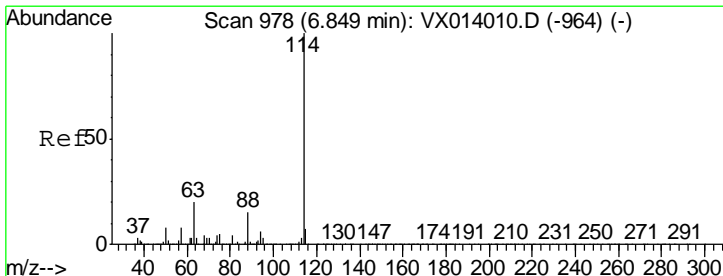
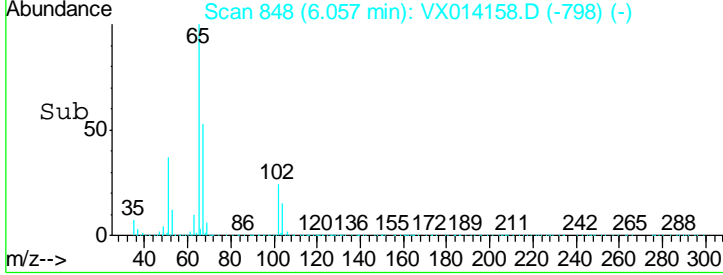
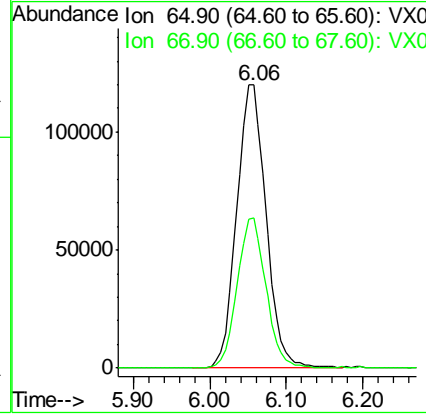
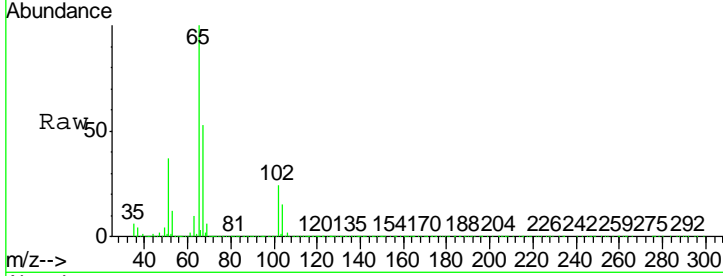




#33  
 1,2-Dichloroethane-d4  
 Concen: 48.886 ug/l  
 RT: 6.06 min Scan# 848  
 Delta R.T. 0.01 min  
 Lab File: VX014158.D  
 Acq: 20 Dec 2019 07:12

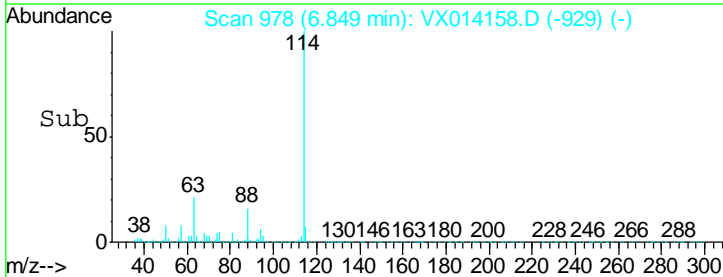
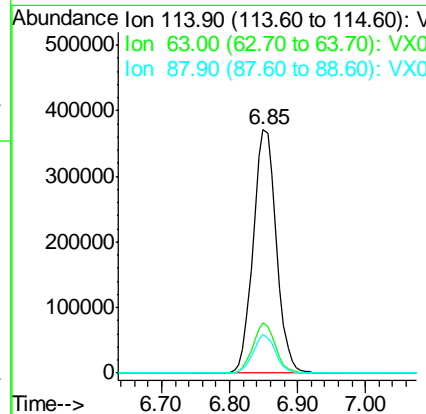
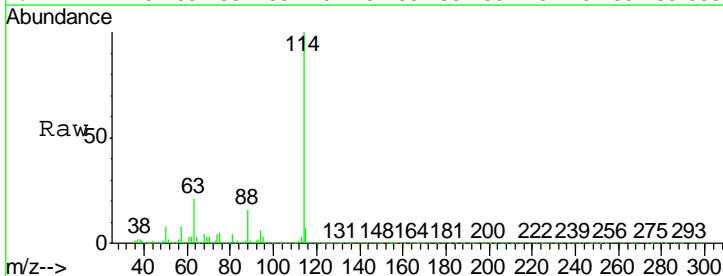
Instrument : MSVOA\_X  
 ClientSampled : VX014158.D  
 MW-11

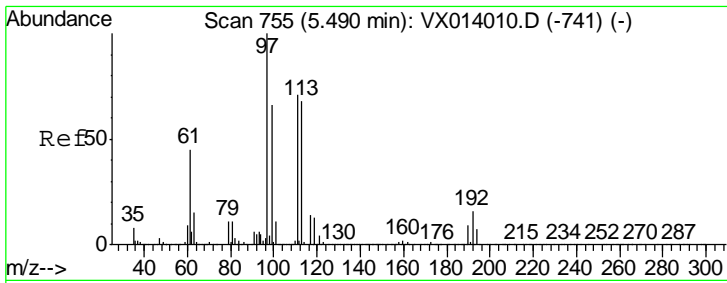
| Tgt Ion | Resp   | Lower | Upper |
|---------|--------|-------|-------|
| 65      | 317355 |       |       |
| 67      | 51.8   | 0.0   | 106.4 |



#34  
 1,4-Difluorobenzene  
 Concen: 50.000 ug/l  
 RT: 6.85 min Scan# 978  
 Delta R.T. 0.00 min  
 Lab File: VX014158.D  
 Acq: 20 Dec 2019 07:12

| Tgt Ion | Resp   | Lower | Upper |
|---------|--------|-------|-------|
| 114     | 879746 |       |       |
| 63      | 20.5   | 0.0   | 40.8  |
| 88      | 16.1   | 0.0   | 30.4  |

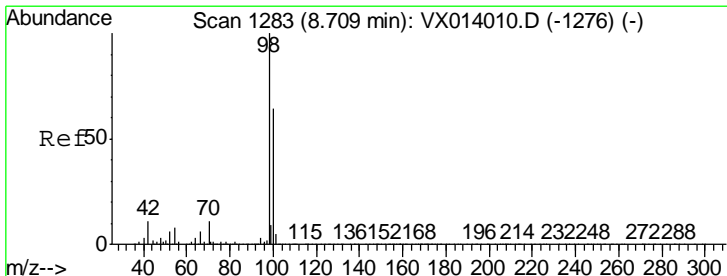
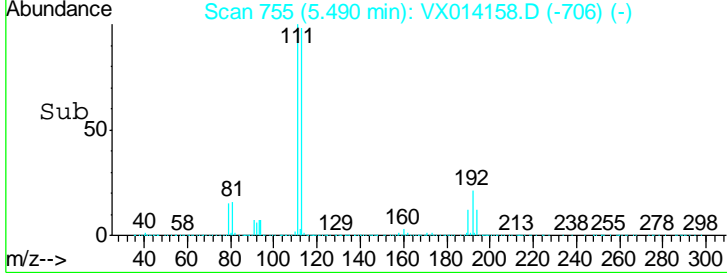
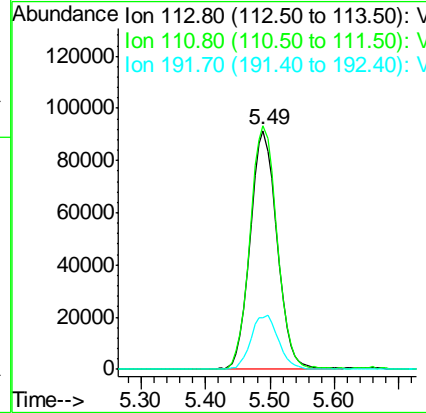
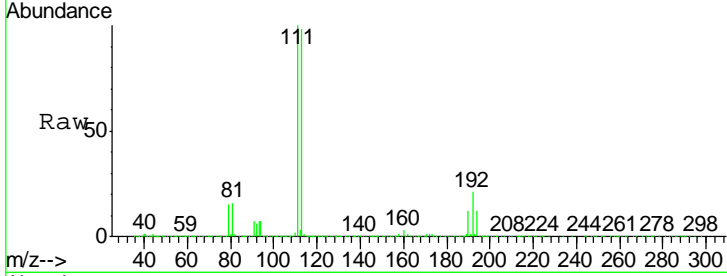




#35  
 Dibromofluoromethane  
 Concen: 48.776 ug/l  
 RT: 5.49 min Scan# 755  
 Delta R.T. 0.00 min  
 Lab File: VX014158.D  
 Acq: 20 Dec 2019 07:12

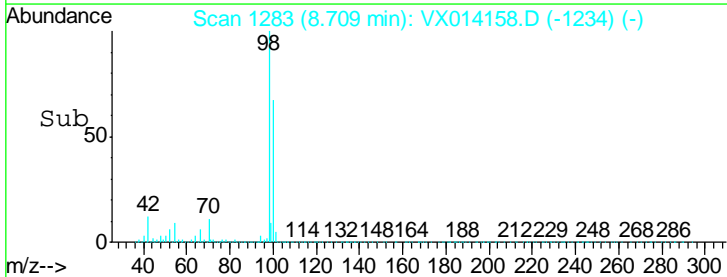
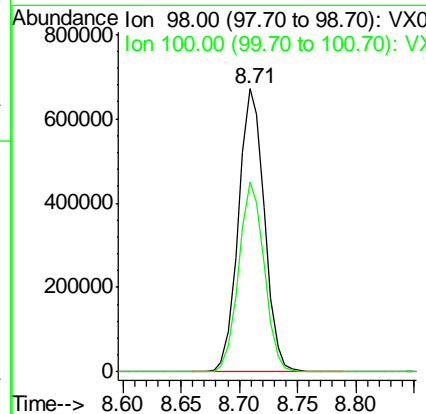
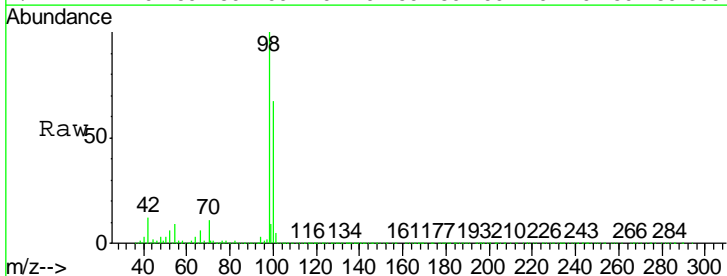
**Instrument :**  
 MSVOA\_X  
**ClientSampled :**  
 MW-11

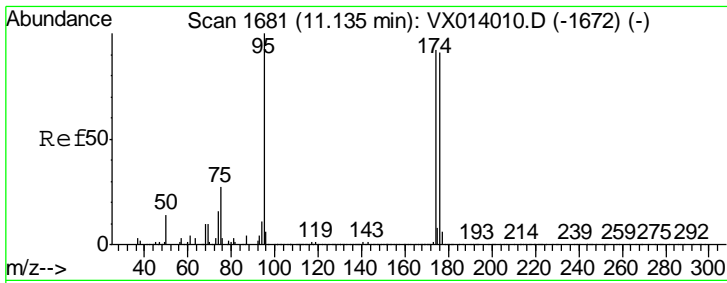
| Tgt Ion | Resp   | Lower | Upper |
|---------|--------|-------|-------|
| 113     | 260847 |       |       |
| 111     | 102.4  | 82.0  | 123.0 |
| 192     | 23.2   | 19.3  | 28.9  |



#50  
 Toluene-d8  
 Concen: 50.052 ug/l  
 RT: 8.71 min Scan# 1283  
 Delta R.T. 0.00 min  
 Lab File: VX014158.D  
 Acq: 20 Dec 2019 07:12

| Tgt Ion | Resp    | Lower | Upper |
|---------|---------|-------|-------|
| 98      | 1042115 |       |       |
| 100     | 66.1    | 52.9  | 79.3  |

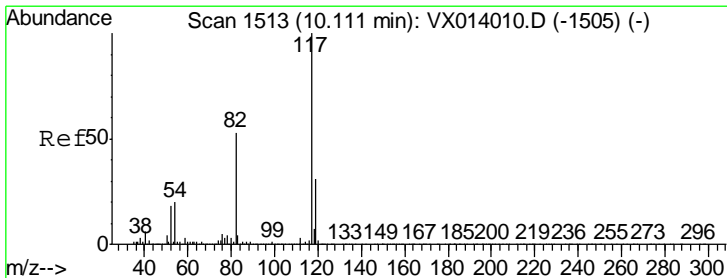
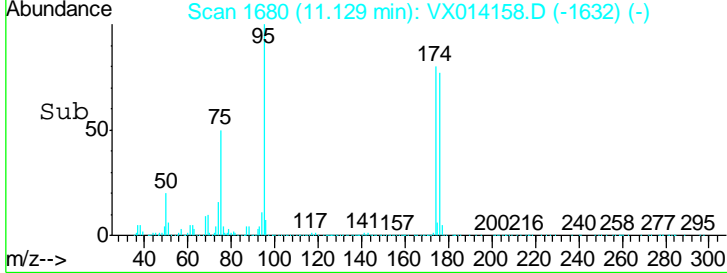
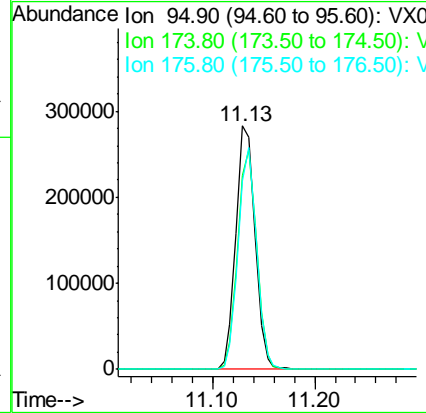
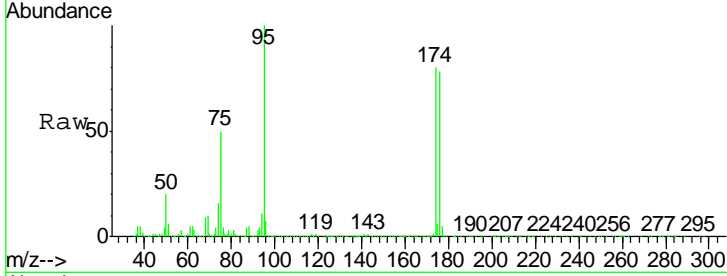




#62  
 4-Bromofluorobenzene  
 Concen: 48.056 ug/l  
 RT: 11.13 min Scan# 1680  
 Delta R.T. -0.01 min  
 Lab File: VX014158.D  
 Acq: 20 Dec 2019 07:12

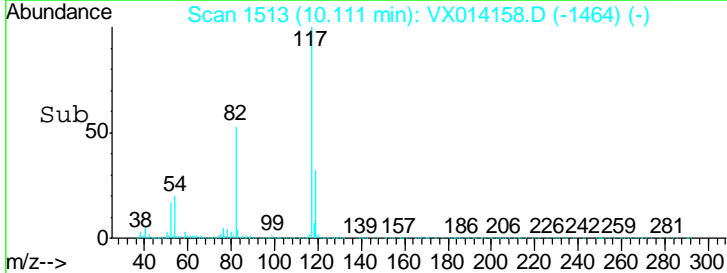
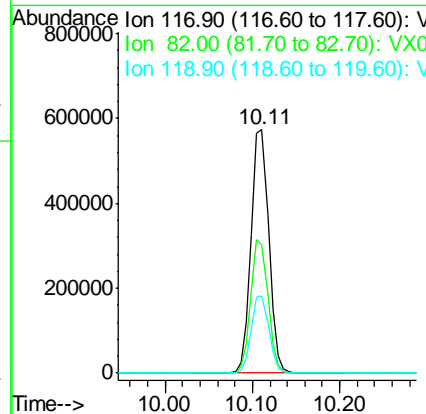
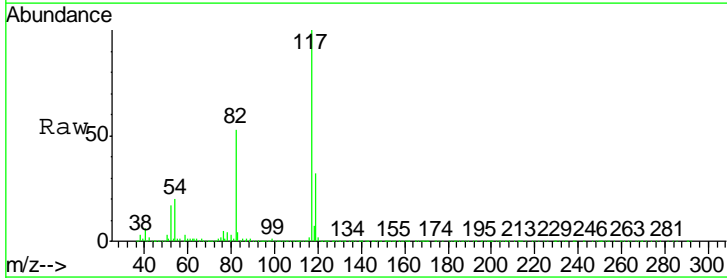
Instrument :  
 MSVOA\_X  
 ClientSampled :  
 MW-11

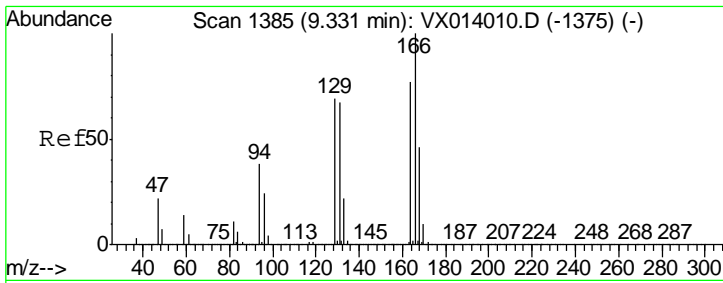
| Tgt Ion | Resp | Lower | Upper |
|---------|------|-------|-------|
| 95      | 100  |       |       |
| 174     | 89.2 | 0.0   | 175.8 |
| 176     | 87.7 | 0.0   | 173.0 |



#63  
 Chlorobenzene-d5  
 Concen: 50.000 ug/l  
 RT: 10.11 min Scan# 1513  
 Delta R.T. 0.00 min  
 Lab File: VX014158.D  
 Acq: 20 Dec 2019 07:12

| Tgt Ion | Resp | Lower | Upper |
|---------|------|-------|-------|
| 117     | 100  |       |       |
| 82      | 52.7 | 42.2  | 63.4  |
| 119     | 31.9 | 25.1  | 37.7  |

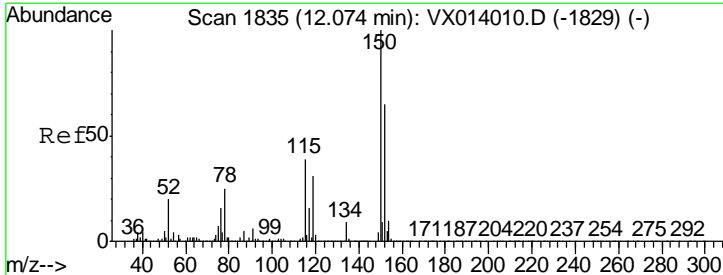
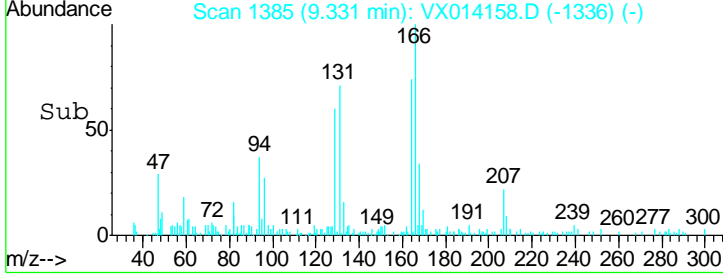
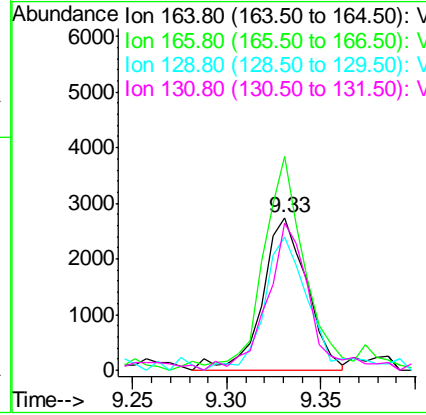
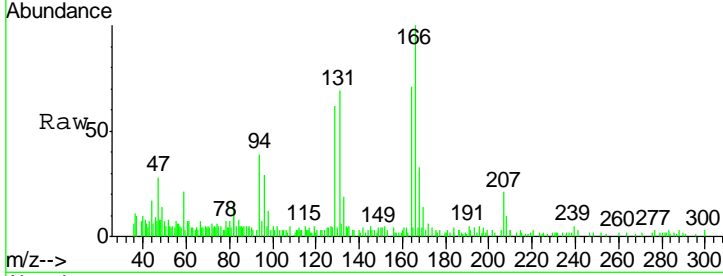




#64  
 Tetrachloroethene  
 Concen: 0.629 ug/l  
 RT: 9.33 min Scan# 1385  
 Delta R.T. 0.00 min  
 Lab File: VX014158.D  
 Acq: 20 Dec 2019 07:12

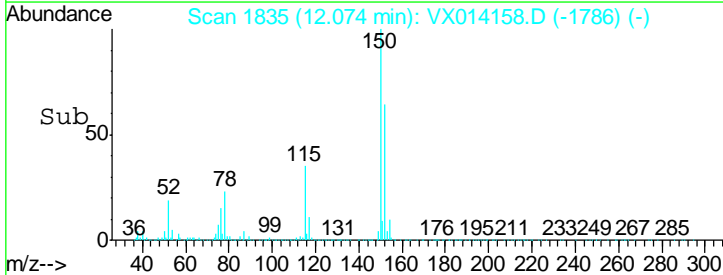
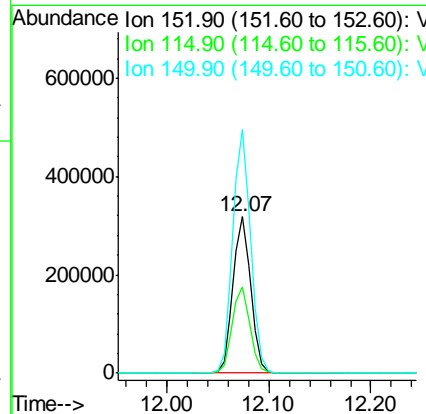
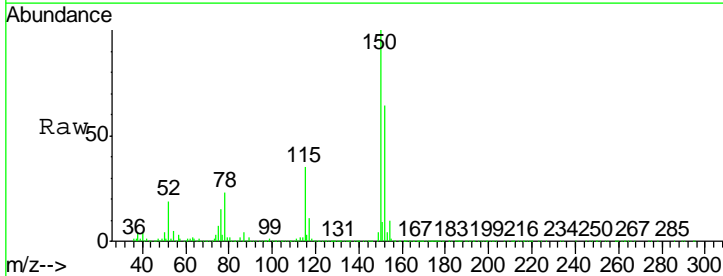
Instrument :  
 MSVOA\_X  
 ClientSampled :  
 MW-11

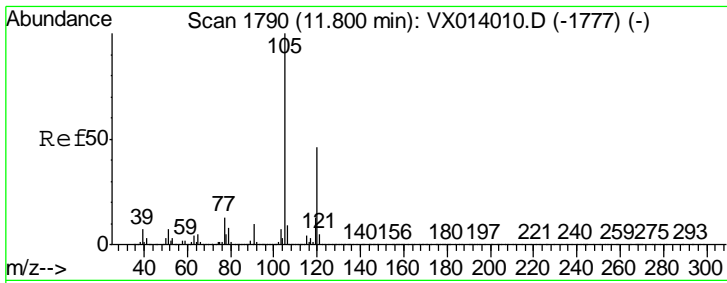
| Tgt Ion | Resp  | Lower | Upper |
|---------|-------|-------|-------|
| 164     | 100   |       |       |
| 166     | 133.8 | 104.0 | 156.0 |
| 129     | 84.0  | 72.2  | 108.4 |
| 131     | 92.4  | 69.6  | 104.4 |



#72  
 1,4-Dichlorobenzene-d4  
 Concen: 50.000 ug/l  
 RT: 12.07 min Scan# 1835  
 Delta R.T. 0.00 min  
 Lab File: VX014158.D  
 Acq: 20 Dec 2019 07:12

| Tgt Ion | Resp  | Lower | Upper |
|---------|-------|-------|-------|
| 152     | 100   |       |       |
| 115     | 55.4  | 38.3  | 114.9 |
| 150     | 156.6 | 0.0   | 345.4 |

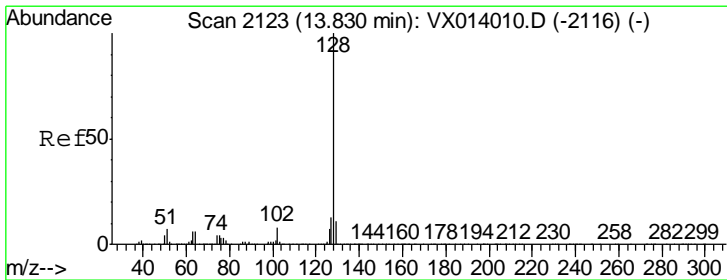
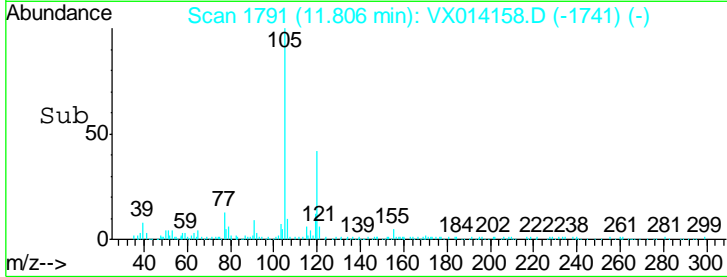
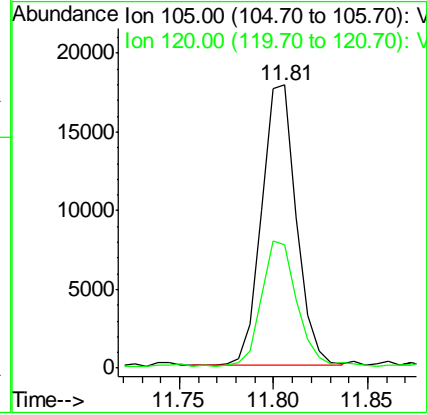
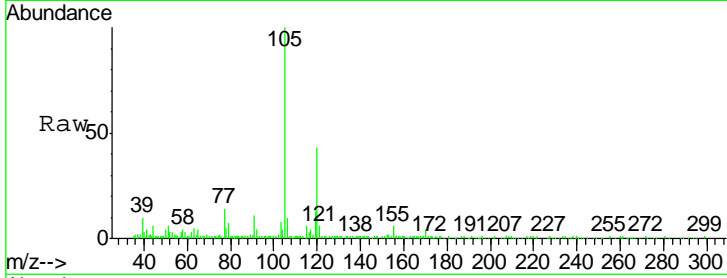




#84  
 1,2,4-Trimethylbenzene  
 Concen: 1.007 ug/l  
 RT: 11.81 min Scan# 1791  
 Delta R.T. 0.01 min  
 Lab File: VX014158.D  
 Acq: 20 Dec 2019 07:12

Instrument :  
 MSVOA\_X  
 ClientSampled :  
 MW-11

Tgt Ion: 105 Resp: 22661  
 Ion Ratio Lower Upper  
 105 100  
 120 46.7 23.1 69.2



#95  
 Naphthalene  
 Concen: 11.915 ug/l  
 RT: 13.83 min Scan# 2123  
 Delta R.T. 0.00 min  
 Lab File: VX014158.D  
 Acq: 20 Dec 2019 07:12

Tgt Ion: 128 Resp: 294874  
 Ion Ratio Lower Upper  
 128 100  
 127 12.6 10.2 15.4  
 129 10.7 8.7 13.1

