

Data Path : Z:\voasrv\HPCHEM1\MSVOA\_X\Data\VX121920\  
 Data File : VX020203.D  
 Acq On : 20 Dec 2020 04:23  
 Operator : JC/MD  
 Sample : L5095-13  
 Misc : 5.0mL/MSVOA\_X/WATER  
 ALS Vial : 41 Sample Multiplier: 1

**Instrument :**  
 MSVOA\_X  
**ClientSampleId :**  
 39-FD01-121420

Integration Parameters: RTEINT.P  
 Integrator: RTE  
 Smoothing : ON  
 Sampling : 1  
 Start Thrs: 0.2  
 Stop Thrs : 0  
 Filtering: 5  
 Min Area: 3 % of Largest Peak  
 Max Peaks: 100  
 Peak Location: TOP

If leading or trailing edge < 100 prefer < Baseline drop else tangent >  
 Peak separation: 5

Method : Z:\VOASRV\HPCHEM1\MSVOA\_X\METHOD\82X121820W.M  
 Title : SW846 8260

Signal : TIC: VX020203.D\data.ms

peak #	R.T. min	first scan	max scan	last scan	PK TY	peak height	corr. area	corr. % max.	% of total
1	2.575	237	244	255	rVB2	9180	19204	1.34%	0.265%
2	5.465	704	718	733	rBV	166039	469119	32.84%	6.463%
3	5.623	733	744	760	rVV	281382	798748	55.91%	11.004%
4	6.031	799	811	824	rBV	185651	489952	34.29%	6.750%
5	6.830	929	942	960	rBV	447455	1046914	73.28%	14.423%
6	8.696	1240	1248	1258	rBV	925008	1428647	100.00%	19.682%
7	10.092	1471	1477	1495	rBV	882400	1205771	84.40%	16.612%
8	11.122	1640	1646	1656	rBV	652830	834122	58.39%	11.492%
9	12.061	1795	1800	1807	rBV	801475	966059	67.62%	13.309%

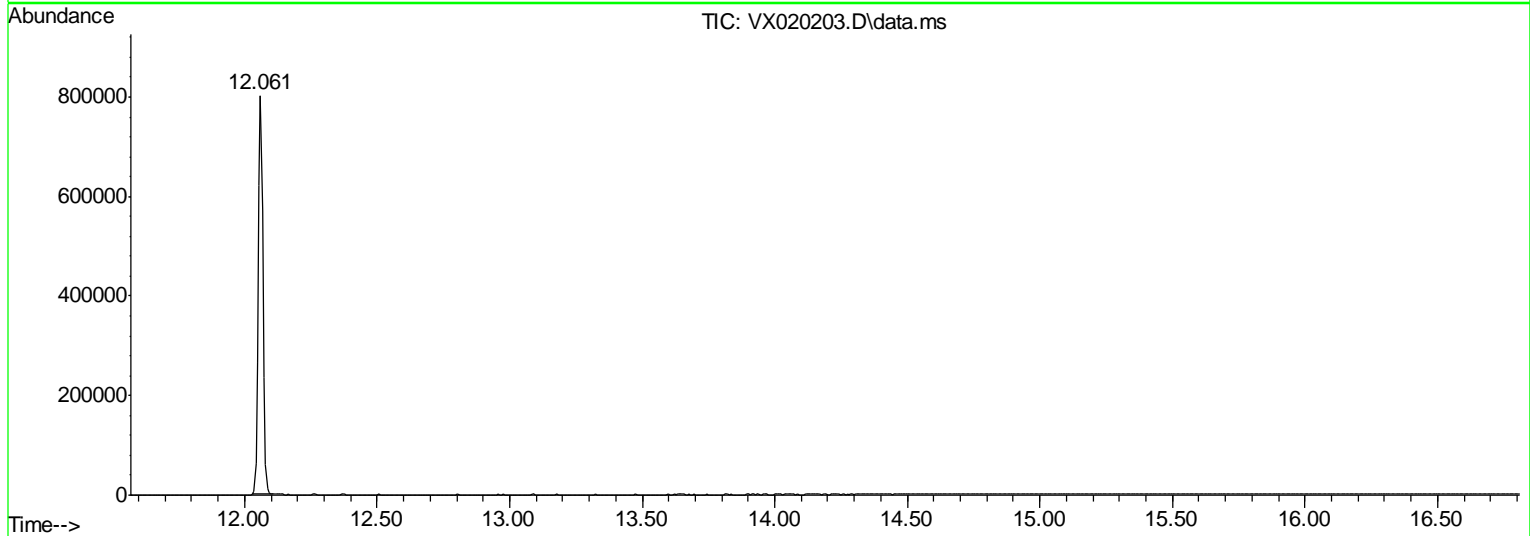
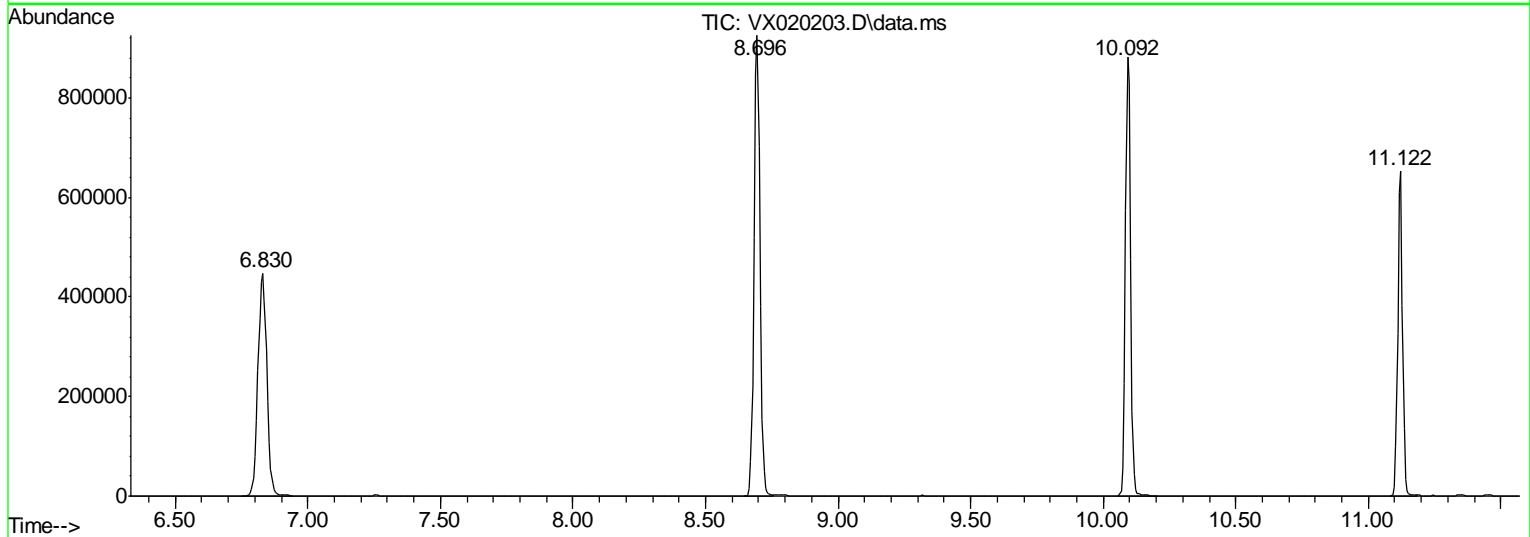
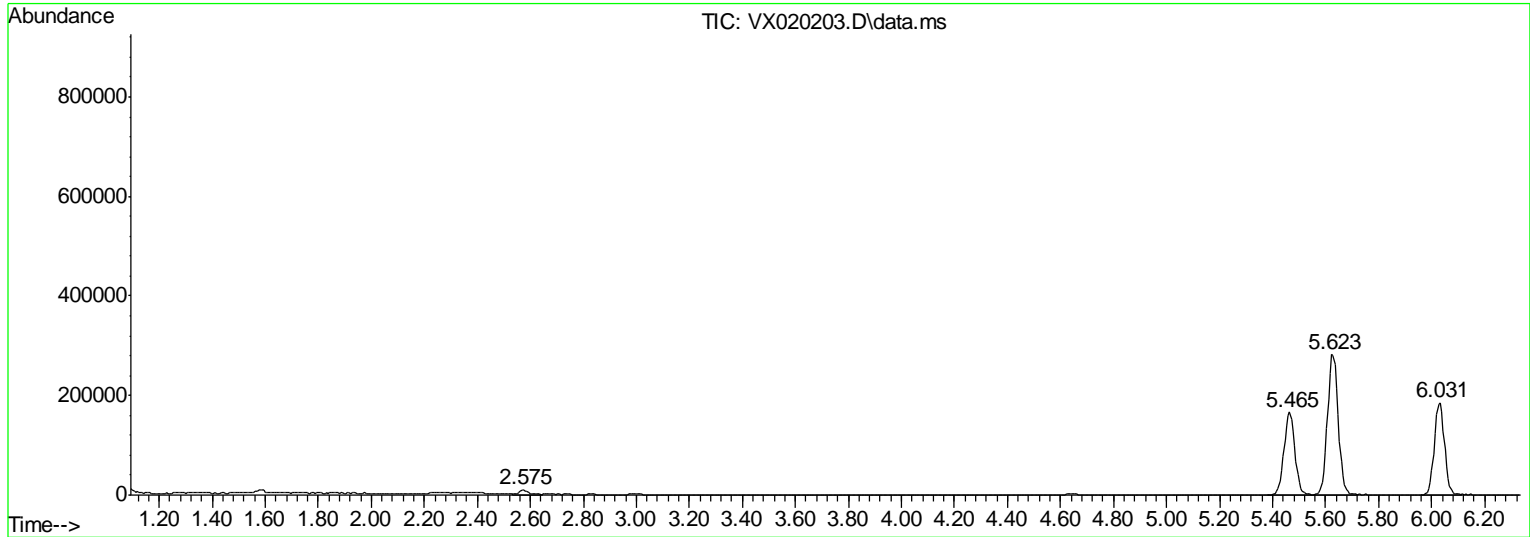
Sum of corrected areas: 7258536

Data Path : Z:\voasrv\HPCHEM1\MSVOA\_X\Data\VX121920\  
 Data File : VX020203.D  
 Acq On : 20 Dec 2020 04:23  
 Operator : JC/MD  
 Sample : L5095-13  
 Mi sc : 5.0mL/MSVOA\_X/WATER  
 ALS Vial : 41 Sample Multiplier: 1

**Instrument :**  
 MSVOA\_X  
**ClientSampled :**  
 39-FD01-121420

Quant Method : Z:\VOASRV\HPCHEM1\MSVOA\_X\METHCD\82X121820W.M  
 Quant Title : SW846 8260

TIC Library : C:\DATABASE\NI ST11.L  
 TIC Integration Parameters: LSCINT.P



Data Path : Z:\voasrv\HPCHEM1\MSVOA\_X\Data\VX121920\  
Data File : VX020203.D  
Acq On : 20 Dec 2020 04:23  
Operator : JC/MD  
Sample : L5095-13  
Misc : 5.0mL/MSVOA\_X/WATER  
ALS Vial : 41 Sample Multiplier: 1

**Instrument :**  
MSVOA\_X  
**ClientSampleId :**  
39-FD01-121420

Quant Method : Z:\VOASRV\HPCHEM1\MSVOA\_X\METHOD\82X121820W.M  
Quant Title : SW846 8260

TIC Library : C:\DATABASE\NI ST11.L  
TIC Integration Parameters: LSCINT.P

No Library Search Compounds Detected

\*\*\*\*\*

Data Path : Z:\voasrv\HPCHEM1\MSVOA\_X\Data\VX121920\  
Data File : VX020203.D  
Acq On : 20 Dec 2020 04:23  
Operator : JC/MD  
Sample : L5095-13  
Misc : 5.0mL/MSVOA\_X/WATER  
ALS Vial : 41 Sample Multiplier: 1

**Instrument :**  
MSVOA\_X  
**ClientSampleID :**  
39-FD01-121420

Quant Method : Z:\VOASRV\HPCHEM1\MSVOA\_X\METHOD\82X121820W.M  
Quant Title : SW846 8260

TIC Library : C:\DATABASE\NI ST11.L  
TIC Integration Parameters: LSCINT.P

TIC Top Hit name	RT	EstConc	Units	Response	--Internal Standard--		
					#	RT	Resp Conc

---