

Data Path : Z:\voasrv\HPCHEM1\MSVOA_X\Data\VX121920\
 Data File : VX020234.D
 Acq On : 20 Dec 2020 17:10
 Operator : JC/MD
 Sample : L5095-10
 Misc : 5.0mL/MSVOA_X/WATER
 ALS Vial : 74 Sample Multiplier: 1

Instrument :
 MSVOA_X
 ClientSampleId :
 39-MW108-121420

Integration Parameters: RTEINT.P
 Integrator: RTE
 Smoothing : ON
 Sampling : 1
 Start Thrs: 0.2
 Stop Thrs : 0
 Filtering: 5
 Min Area: 3 % of Largest Peak
 Max Peaks: 100
 Peak Location: TOP

If leading or trailing edge < 100 prefer < Baseline drop else tangent >
 Peak separation: 5

Method : Z:\VOASRV\HPCHEM1\MSVOA_X\METHOD\82X121820W.M
 Title : SW846 8260

Signal : TIC: VX020234.D\data.ms

peak #	R.T. min	first scan	max scan	last scan	PK TY	peak height	corr. area	corr. % max.	% of total
1	2.575	236	244	254	rVB	10887	20208	1.36%	0.235%
2	3.142	331	337	348	rVB	9339	18078	1.22%	0.210%
3	4.562	557	570	586	rBV	294916	800928	54.02%	9.314%
4	5.464	703	718	730	rBV	168496	488803	32.97%	5.684%
5	5.629	733	745	759	rVB	296065	823658	55.55%	9.578%
6	6.031	800	811	827	rBV	193787	514379	34.69%	5.982%
7	6.830	929	942	960	rBV	461625	1088458	73.41%	12.658%
8	8.696	1241	1248	1262	rBV	960153	1482678	100.00%	17.242%
9	10.092	1471	1477	1492	rBV	924795	1291176	87.08%	15.015%
10	11.122	1640	1646	1658	rBV	709118	928745	62.64%	10.800%
11	12.061	1794	1800	1808	rBV	919729	1142057	77.03%	13.281%

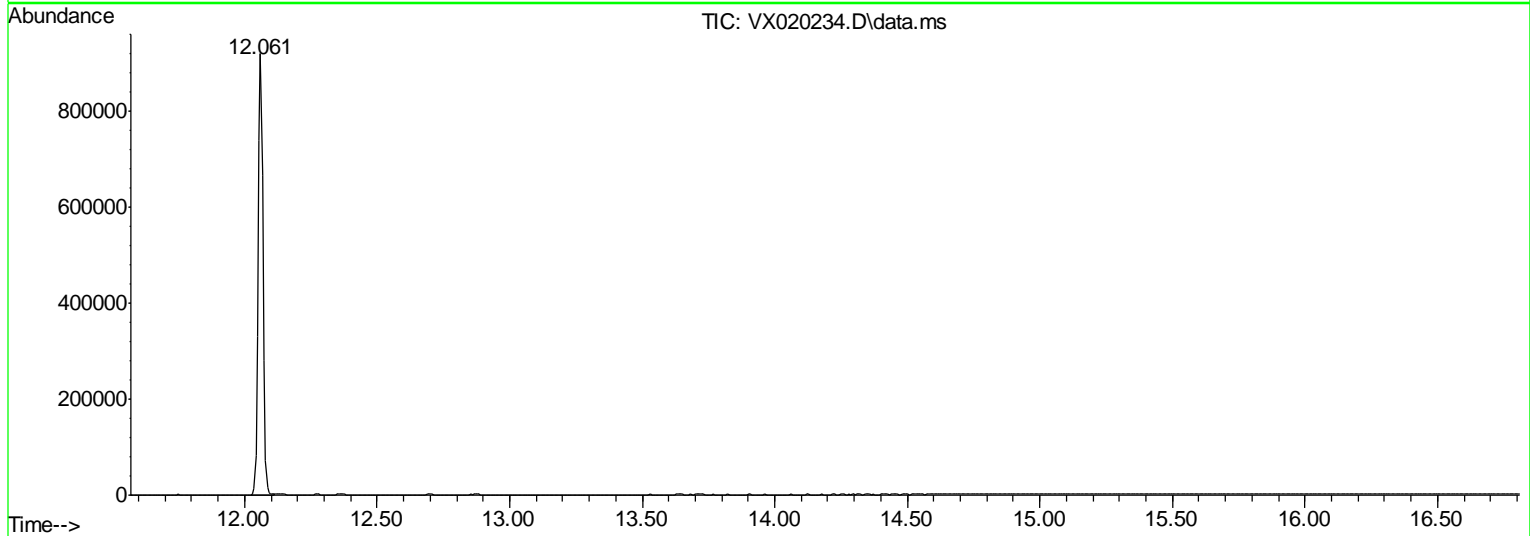
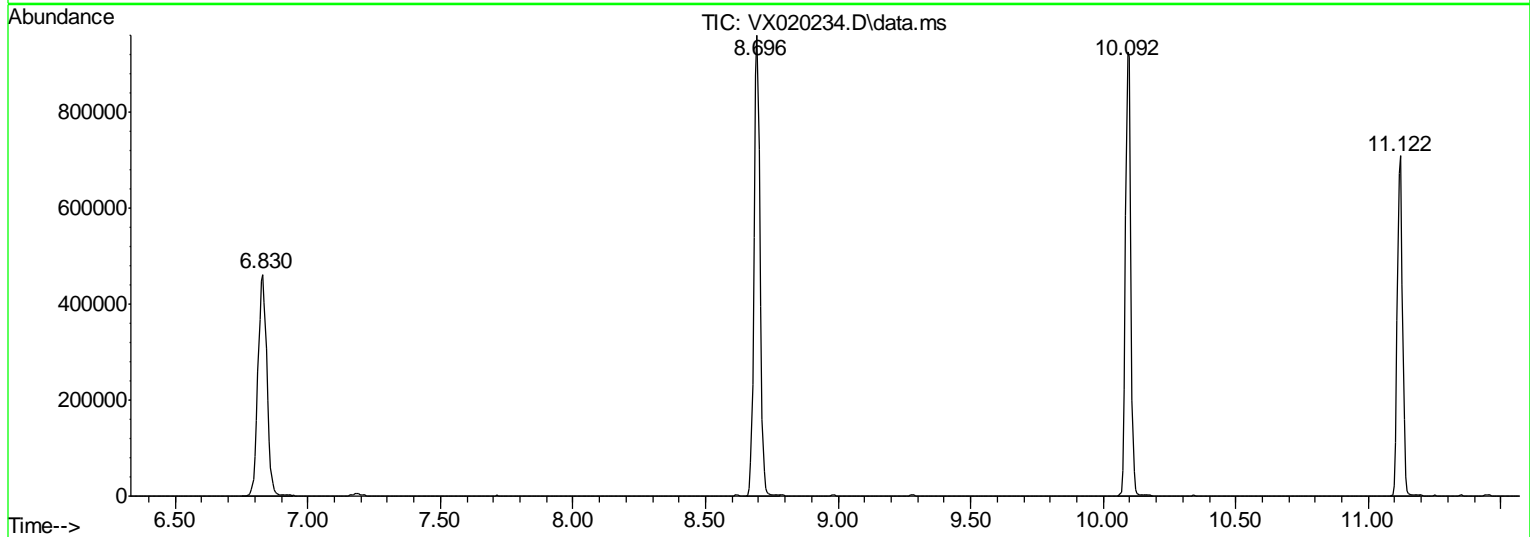
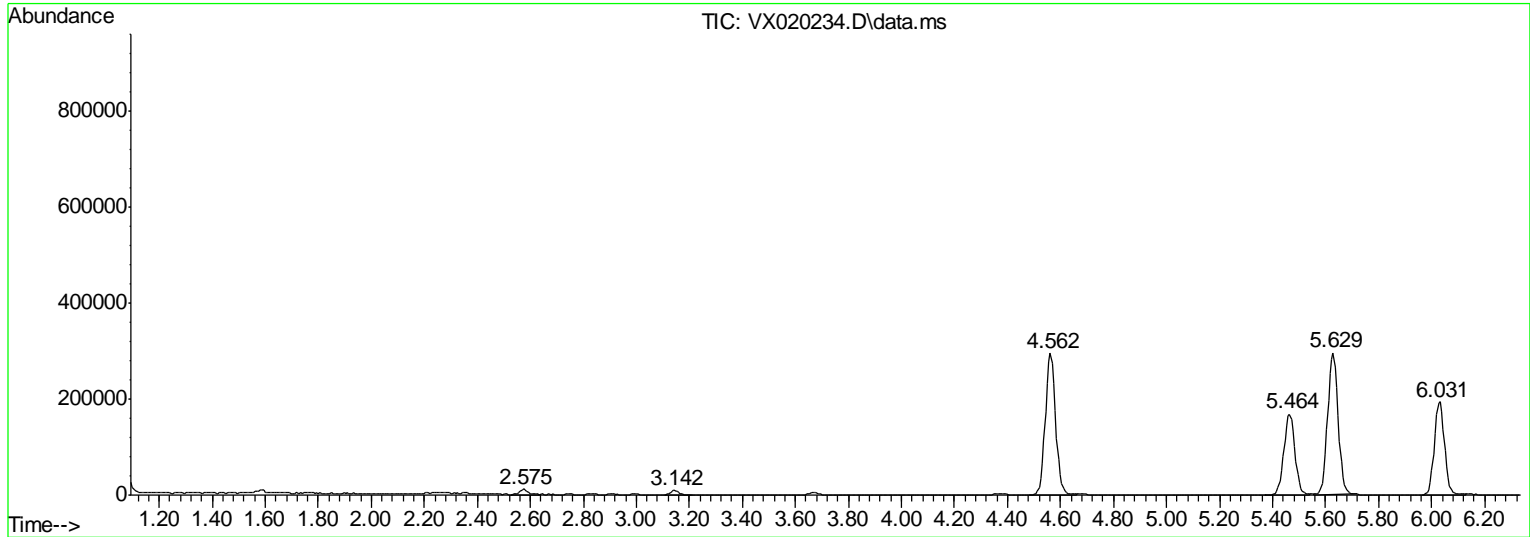
Sum of corrected areas: 8599168

Data Path : Z:\voasrv\HPCHEM1\MSVOA_X\Data\VX121920\
 Data File : VX020234.D
 Acq On : 20 Dec 2020 17:10
 Operator : JC/MD
 Sample : L5095-10
 Mi sc : 5.0mL/MSVOA_X/WATER
 ALS Vial : 74 Sample Multiplier: 1

Instrument :
 MSVOA_X
ClientSampleId :
 39-MW108-121420

Quant Method : Z:\VOASRV\HPCHEM1\MSVOA_X\METHCD\82X121820W.M
 Quant Title : SW846 8260

TIC Library : C:\DATABASE\NI ST11.L
 TIC Integration Parameters: LSCINT.P



Data Path : Z:\voasrv\HPCHEM1\MSVOA_X\Data\VX121920\
Data File : VX020234.D
Acq On : 20 Dec 2020 17:10
Operator : JC/MD
Sample : L5095-10
Misc : 5.0mL/MSVOA_X/WATER
ALS Vial : 74 Sample Multiplier: 1

Instrument :
MSVOA_X
ClientSampleId :
39-MW108-121420

Quant Method : Z:\VOASRV\HPCHEM1\MSVOA_X\METHOD\82X121820W.M
Quant Title : SW846 8260

TIC Library : C:\DATABASE\NI ST11.L
TIC Integration Parameters: LSCINT.P

No Library Search Compounds Detected

Data Path : Z:\voasrv\HPCHEM1\MSVOA_X\Data\VX121920\
Data File : VX020234.D
Acq On : 20 Dec 2020 17:10
Operator : JC/MD
Sample : L5095-10
Misc : 5.0mL/MSVOA_X/WATER
ALS Vial : 74 Sample Multiplier: 1

Instrument :
MSVOA_X
ClientSampleID :
39-MW108-121420

Quant Method : Z:\VOASRV\HPCHEM1\MSVOA_X\METHOD\82X121820W.M
Quant Title : SW846 8260

TIC Library : C:\DATABASE\NI ST11.L
TIC Integration Parameters: LSCINT.P

TIC Top Hit name	RT	EstConc	Units	Response	--Internal Standard--		
					#	RT	Resp Conc
