

Data Path : Z:\VOASRV\HPCHEM1\MSVOA X\DATA\VX122018\
 Data File : VX006690.D
 Acq On : 20 Dec 2018 22:27
 Operator : JC/MD
 Sample : VX1220WBL02
 Misc : 5.0mL/MSVOA X/WATER
 ALS Vial : 32 Sample Multiplier: 1

Instrument :
 MSVOA_X
 ClientSampled :
 VX1220WBL02

Quant Time: Dec 21 03:36:14 2018
 Quant Method : Z:\VOASRV\HPCHEM1\MSVOA_X\METHOD\82X121818W.M
 Quant Title : SW846 8260
 QLast Update : Wed Dec 19 15:20:58 2018
 Response via : Initial Calibration

Internal Standards	R.T.	QIon	Response	Conc	Units	Dev(Min)
1) Pentafluorobenzene	5.67	168	638740	50.00	ug/l	0.00
34) 1,4-Difluorobenzene	6.86	114	1001885	50.00	ug/l	0.00
63) Chlorobenzene-d5	10.12	117	914949	50.00	ug/l	0.00
72) 1,4-Dichlorobenzene-d4	12.08	152	440279	50.00	ug/l	0.00

System Monitoring Compounds	R.T.	QIon	Response	Conc	Units	Dev(Min)
33) 1,2-Dichloroethane-d4	6.07	65	347906	50.54	ug/l	0.00
Spiked Amount				50.000		
			Recovery	=	101.08%	
35) Dibromofluoromethane	5.51	113	298108	47.05	ug/l	0.00
Spiked Amount				50.000		
			Recovery	=	94.10%	
50) Toluene-d8	8.71	98	1183629	49.55	ug/l	0.00
Spiked Amount				50.000		
			Recovery	=	99.10%	
62) 4-Bromofluorobenzene	11.13	95	431886	49.37	ug/l	0.00
Spiked Amount				50.000		
			Recovery	=	98.74%	

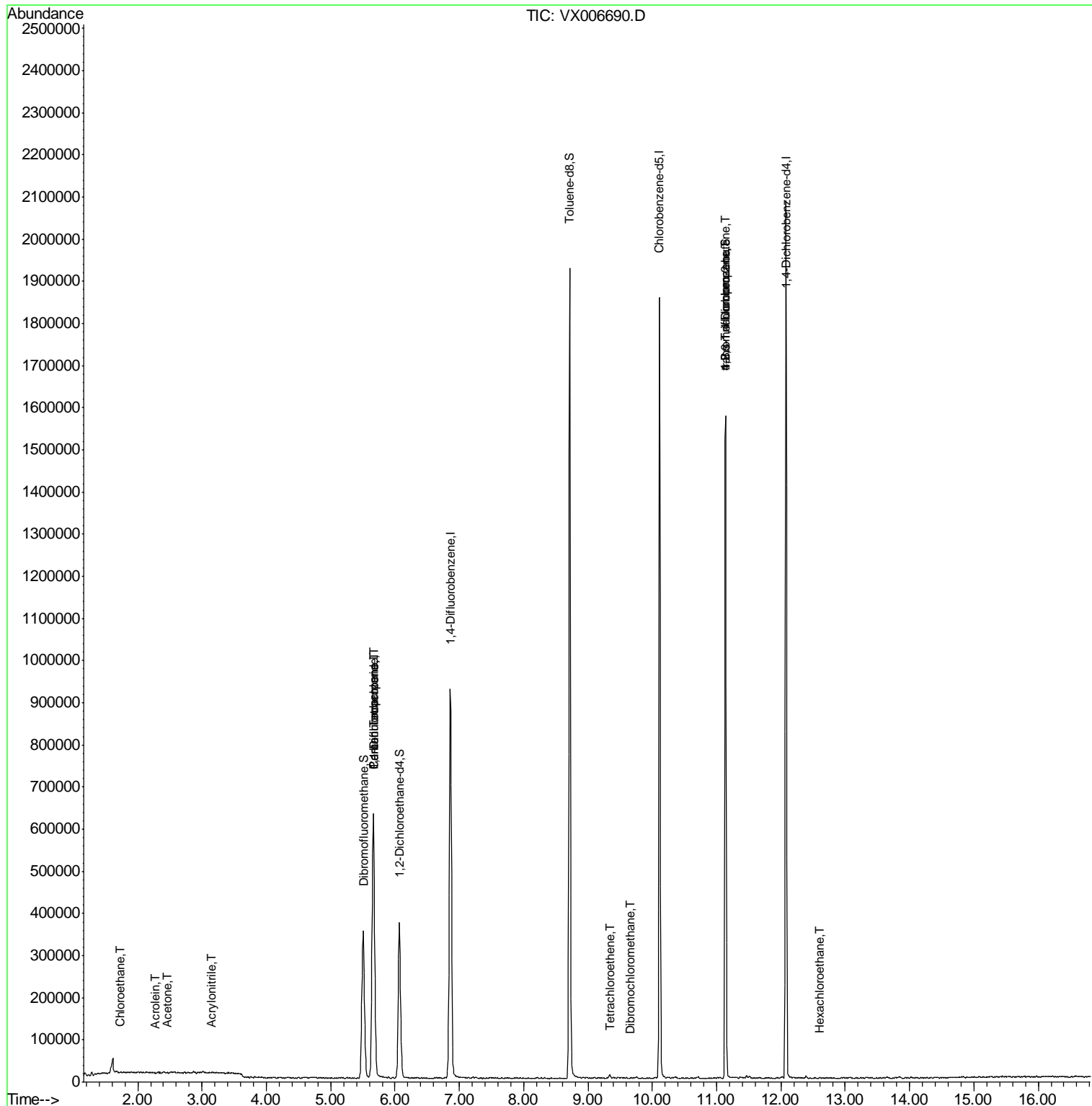
Target Compounds	R.T.	QIon	Response	Conc	Units	Qvalue
5) Bromomethane	1.65	94	544	Below Cal		92
6) Chloroethane	1.73	64	1689	0.371	ug/l #	61
13) Acrolein	2.28	56	394	0.380	ug/l #	13
15) Acrylonitrile	3.16	53	692	0.203	ug/l #	85
16) Acetone	2.45	43	1236	0.391	ug/l	92
28) Bromochloromethane	5.02	49	244	Below Cal	#	3
36) 1,1-Dichloropropene	5.67	75	42356	5.104	ug/l #	48
38) Carbon Tetrachloride	5.67	117	59079	7.326	ug/l #	14
49) 1,4-Dioxane	7.74	88	85	Below Cal	#	1
60) Dibromochloromethane	9.65	129	113	2.340	ug/l	79
64) Tetrachloroethene	9.34	164	1813	0.250	ug/l #	80
76) 1,2,3-Trichloropropane	11.13	75	201600	24.639	ug/l #	40
81) trans-1,4-Dichloro-2-buten	11.13	75	201600	72.868	ug/l #	10
90) Hexachloroethane	12.60	117	64	3.307	ug/l	69

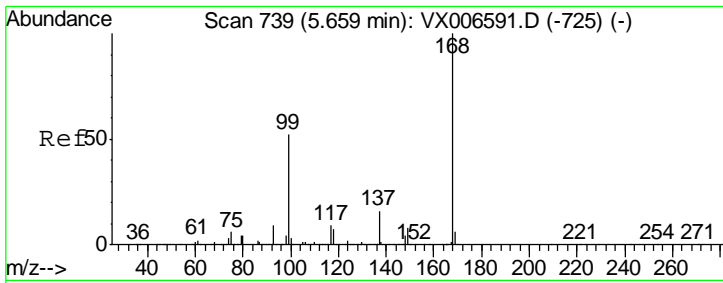
(#) = qualifier out of range (m) = manual integration (+) = signals summed

Data Path : Z:\VOASRV\HPCHEM1\MSVOA X\DATA\VX122018\
 Data File : VX006690.D
 Acq On : 20 Dec 2018 22:27
 Operator : JC/MD
 Sample : VX1220WBL02
 Misc : 5.0mL/MSVOA X/WATER
 ALS Vial : 32 Sample Multiplier: 1

Instrument :
 MSVOA_X
 Client Sampled :
 VX1220WBL02

Quant Time: Dec 20 23:52:46 2018
 Quant Method : Z:\VOASRV\HPCHEM1\MSVOA_X\METHOD\82X121818W.M
 Quant Title : SW846 8260
 QLast Update : Wed Dec 19 15:20:58 2018
 Response via : Initial Calibration

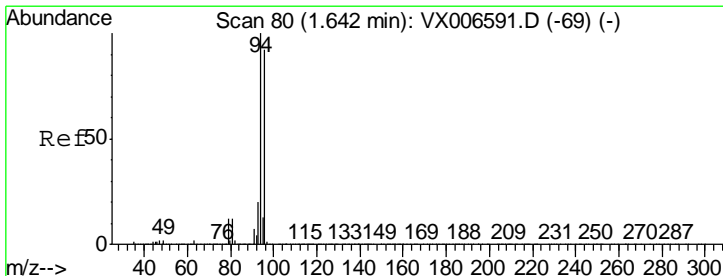
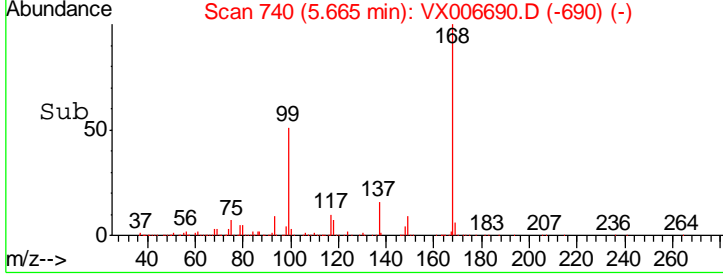
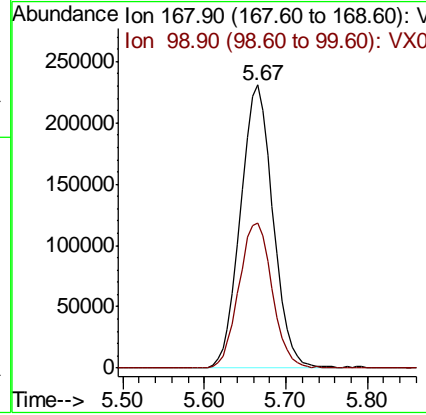
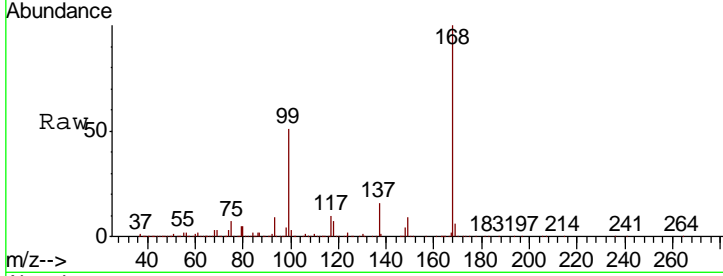




#1
 Pentafluorobenzene
 Concen: 50.000 ug/l
 RT: 5.67 min Scan# 740
 Delta R.T. 0.01 min
 Lab File: VX006690.D
 Acq: 20 Dec 2018 22:27

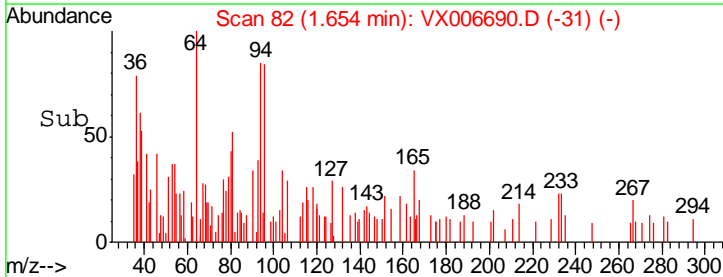
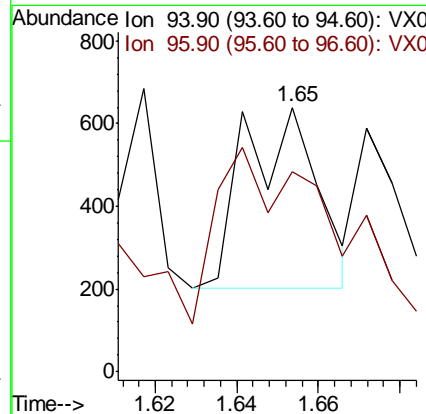
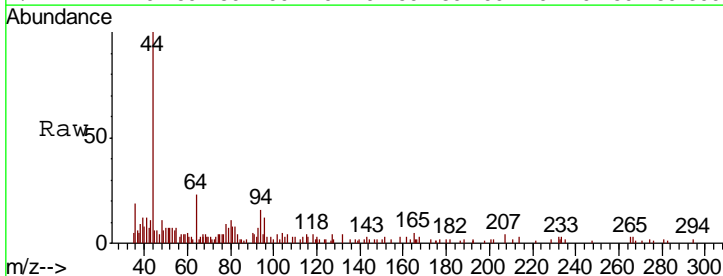
Instrument :
 MSVOA_X
 ClientSampleID :
 VX1220WBL02

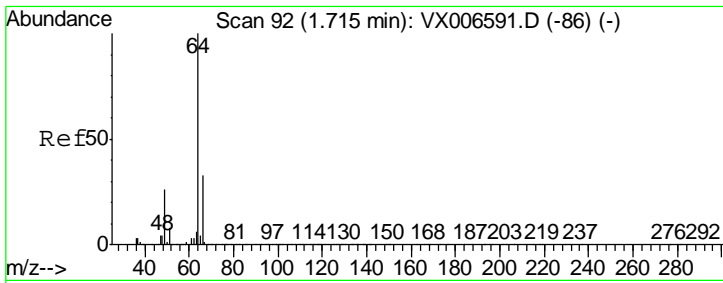
Tgt Ion	Resp	Lower	Upper
168	100		
99	51.1	41.8	62.8



#5
 Bromomethane
 Concen: Below Cal
 RT: 1.65 min Scan# 82
 Delta R.T. 0.01 min
 Lab File: VX006690.D
 Acq: 20 Dec 2018 22:27

Tgt Ion	Resp	Lower	Upper
94	100		
96	84.5	73.4	110.2

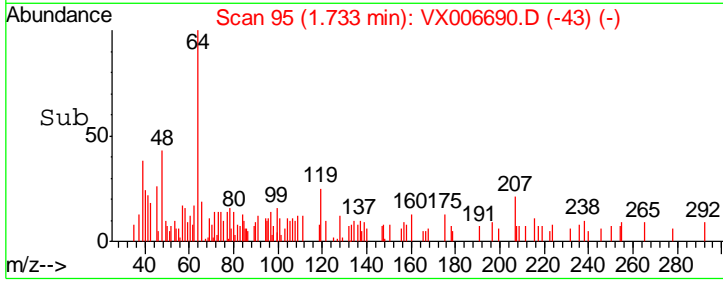
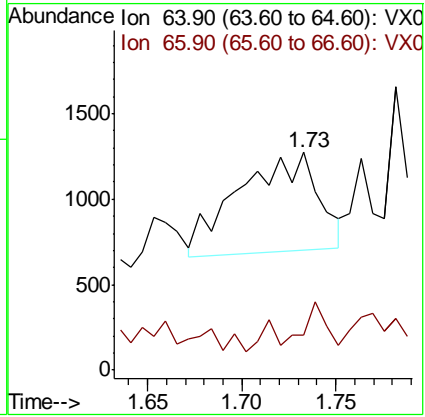
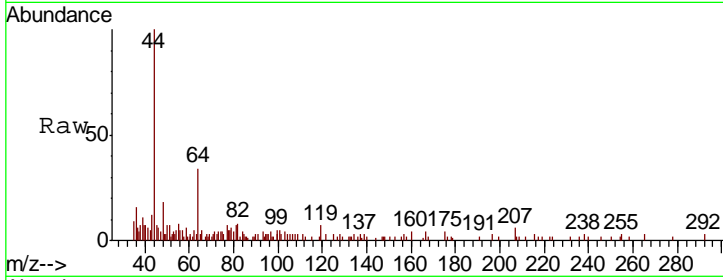




#6
 Chloroethane
 Concen: 0.371 ug/l
 RT: 1.73 min Scan# 95
 Delta R.T. 0.02 min
 Lab File: VX006690.D
 Acq: 20 Dec 2018 22:27

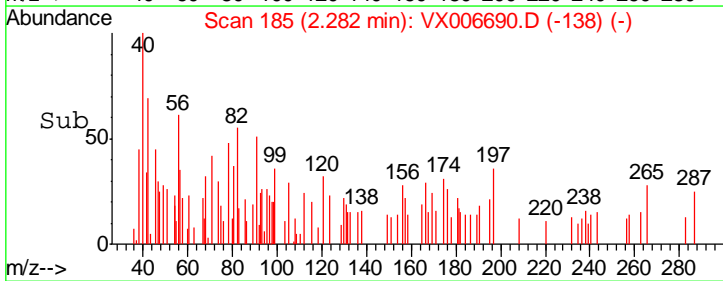
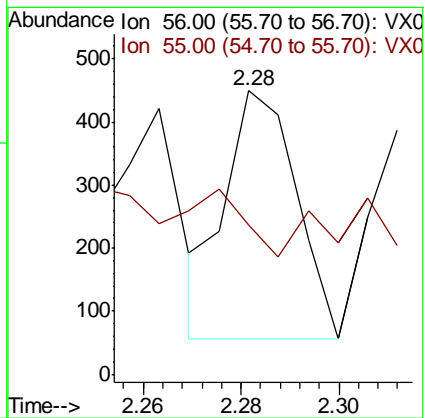
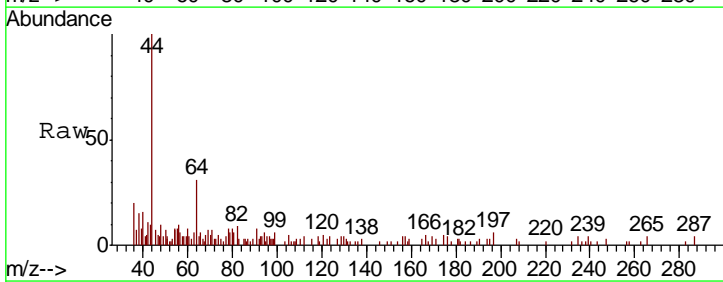
Instrument :
 MSVOA_X
ClientSampled :
 VX1220WBL02

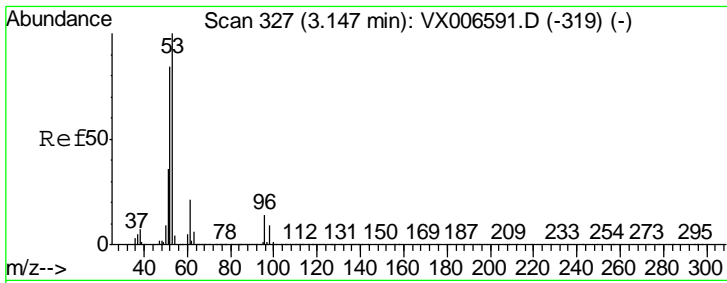
Tgt Ion	Resp	Lower	Upper
64	1689		
66	10.9	26.4	39.6#



#13
 Acrolein
 Concen: 0.380 ug/l
 RT: 2.28 min Scan# 185
 Delta R.T. -0.01 min
 Lab File: VX006690.D
 Acq: 20 Dec 2018 22:27

Tgt Ion	Resp	Lower	Upper
56	394		
55	0.0	58.2	87.4#

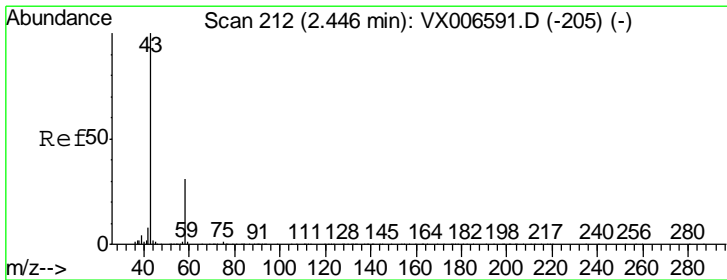
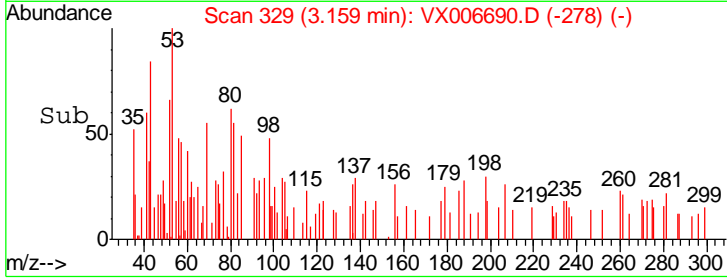
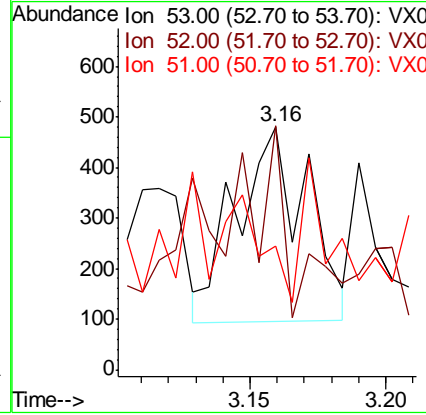
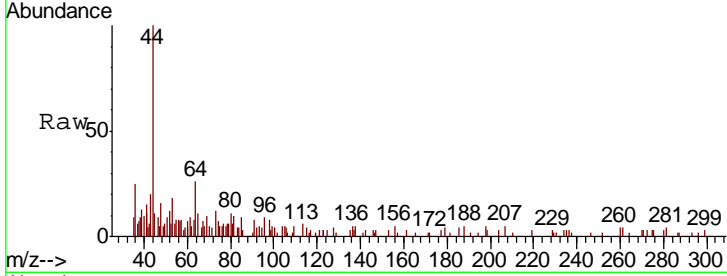




#15
 Acrylonitrile
 Concen: 0.203 ug/l
 RT: 3.16 min Scan# 329
 Delta R.T. 0.01 min
 Lab File: VX006690.D
 Acq: 20 Dec 2018 22:27

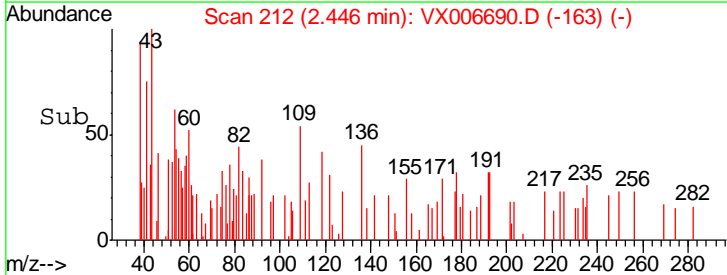
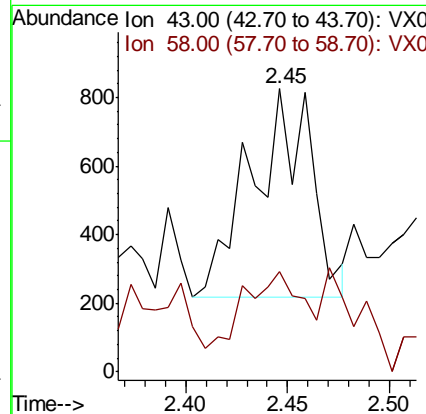
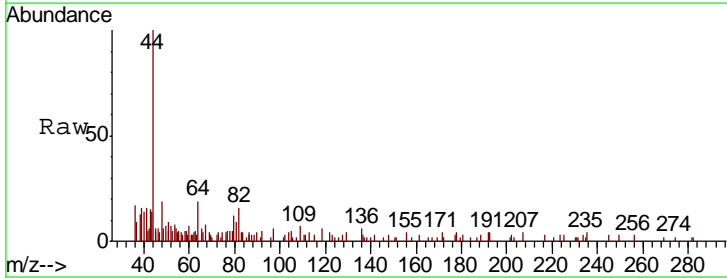
Instrument :
 MSVOA_X
 ClientSampled :
 VX1220WBL02

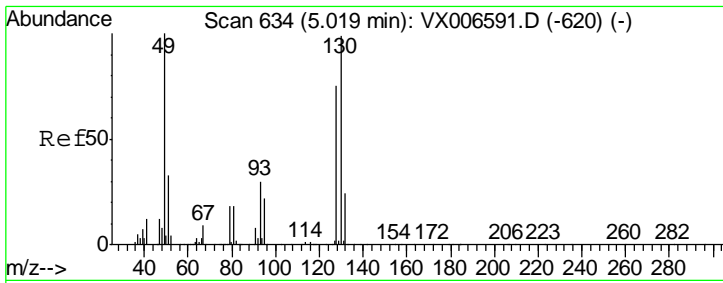
Tgt Ion	Resp	Lower	Upper
53	100		
52	68.6	66.0	99.0
51	28.3	28.6	42.8#



#16
 Acetone
 Concen: 0.391 ug/l
 RT: 2.45 min Scan# 212
 Delta R.T. -0.00 min
 Lab File: VX006690.D
 Acq: 20 Dec 2018 22:27

Tgt Ion	Resp	Lower	Upper
43	100		
58	26.9	25.0	37.6

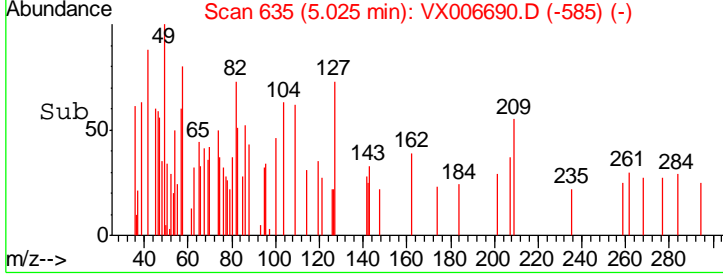
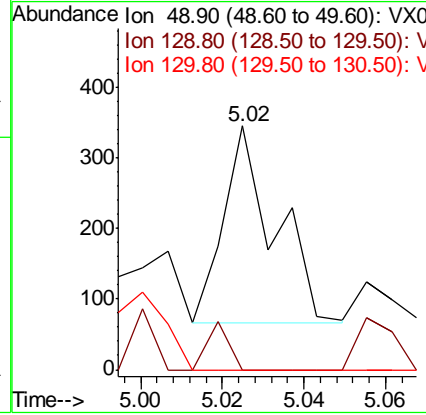
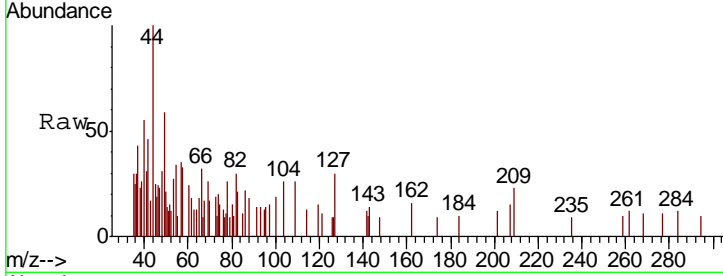




#28
 Bromochloromethane
 Concen: Below Cal
 RT: 5.02 min Scan# 635
 Delta R.T. 0.01 min
 Lab File: VX006690.D
 Acq: 20 Dec 2018 22:27

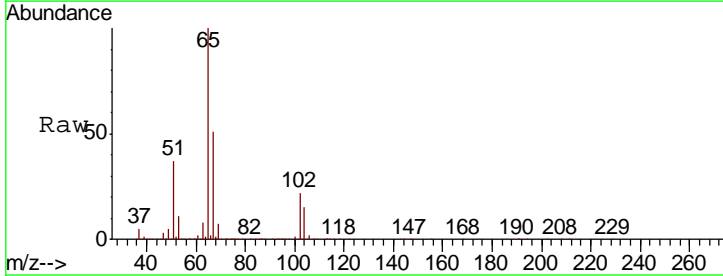
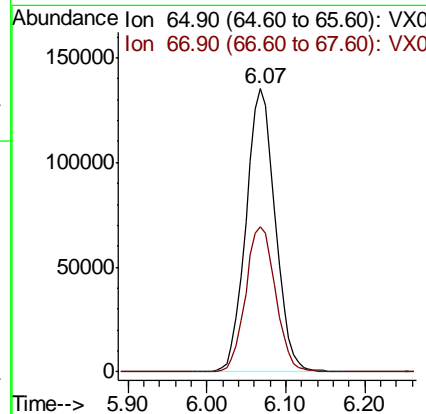
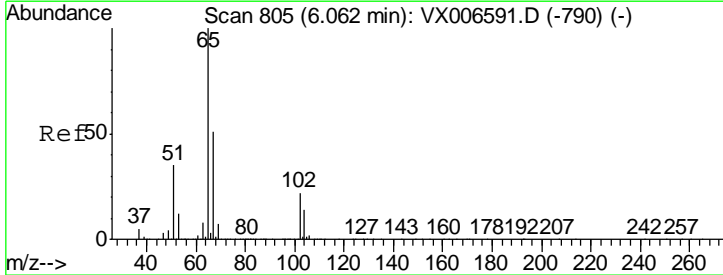
Instrument :
 MSVOA_X
 ClientSampled :
 VX1220WBL02

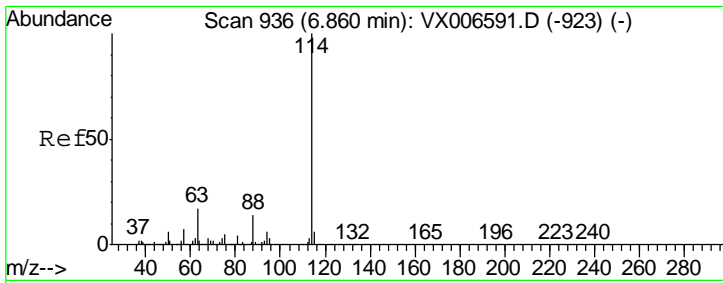
Tgt Ion	Resp	Lower	Upper
49	100		
129	10.2	0.0	5.4#
130	0.0	77.7	116.5#



#33
 1,2-Dichloroethane-d4
 Concen: 50.538 ug/l
 RT: 6.07 min Scan# 806
 Delta R.T. 0.01 min
 Lab File: VX006690.D
 Acq: 20 Dec 2018 22:27

Tgt Ion	Resp	Lower	Upper
65	100		
67	52.8	0.0	105.0

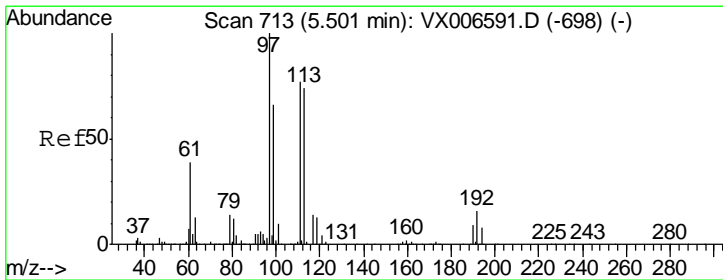
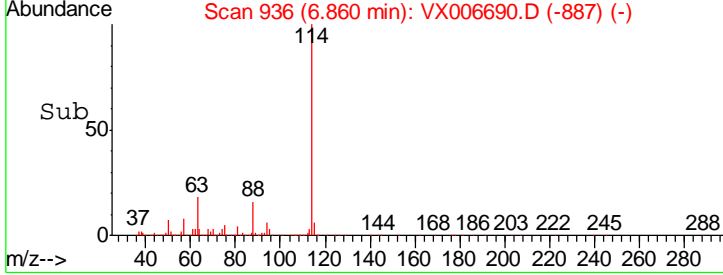
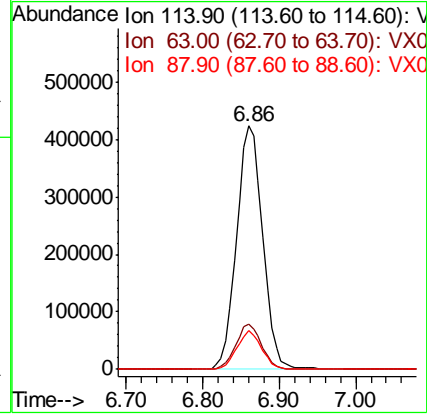
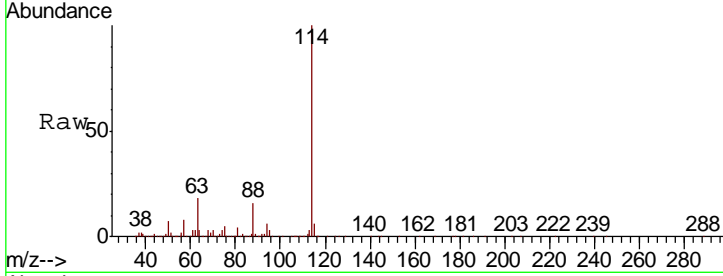




#34
 1,4-Difluorobenzene
 Concen: 50.000 ug/l
 RT: 6.86 min Scan# 936
 Delta R.T. -0.00 min
 Lab File: VX006690.D
 Acq: 20 Dec 2018 22:27

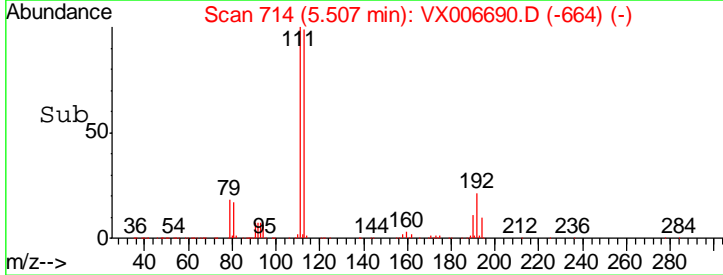
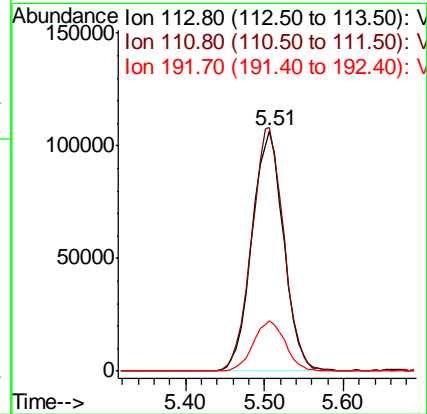
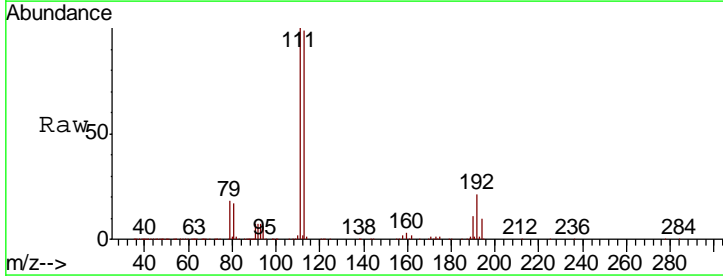
Instrument :
 MSVOA_X
 ClientSampled :
 VX1220WBL02

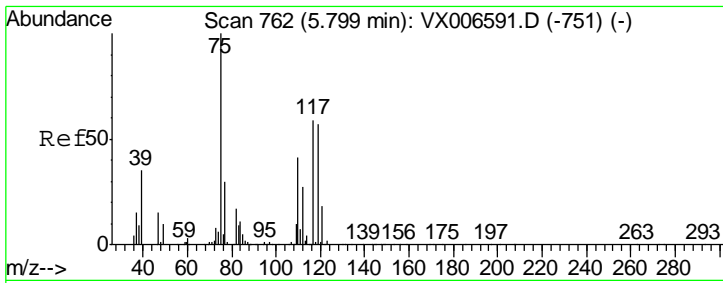
Tgt Ion	Resp	Lower	Upper
114	1001885		
63	18.4	0.0	34.8
88	15.7	0.0	28.8



#35
 Dibromofluoromethane
 Concen: 47.052 ug/l
 RT: 5.51 min Scan# 714
 Delta R.T. 0.01 min
 Lab File: VX006690.D
 Acq: 20 Dec 2018 22:27

Tgt Ion	Resp	Lower	Upper
113	298108		
111	102.3	81.6	122.4
192	21.0	16.7	25.1

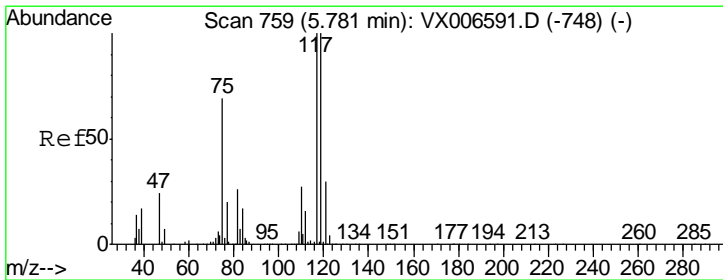
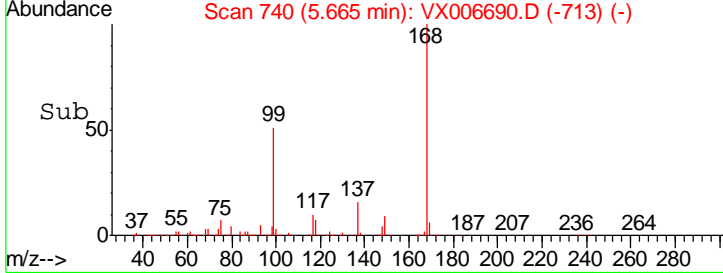
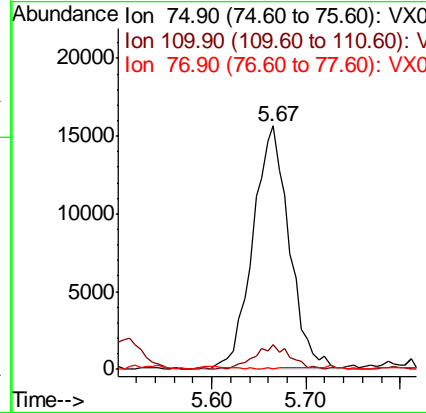
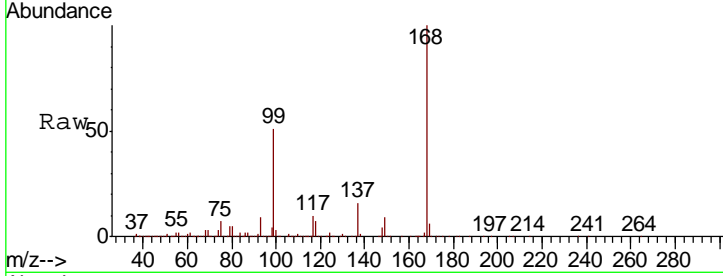




#36
 1,1-Dichloropropene
 Concen: 5.104 ug/l
 RT: 5.67 min Scan# 740
 Delta R.T. -0.13 min
 Lab File: VX006690.D
 Acq: 20 Dec 2018 22:27

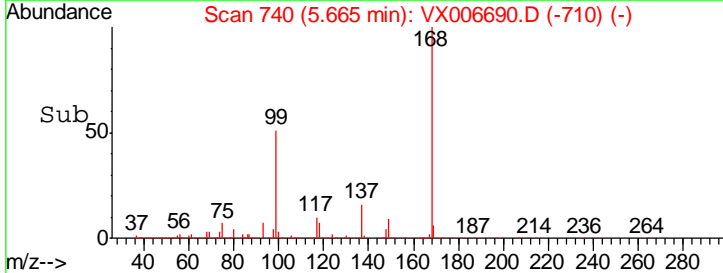
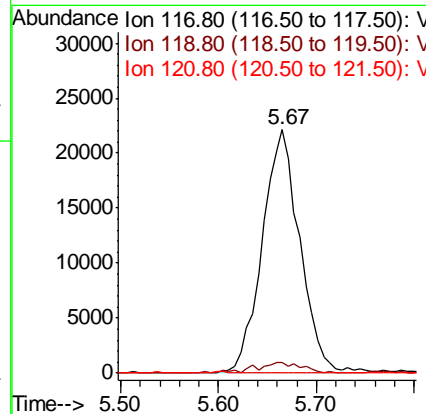
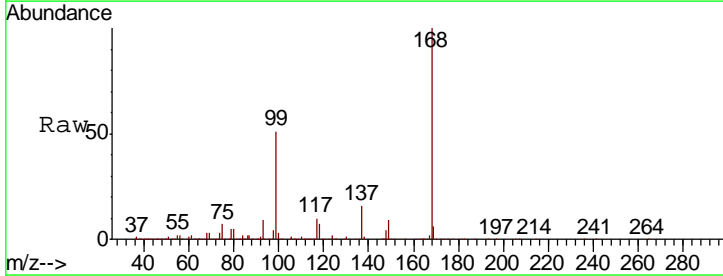
Instrument :
 MSVOA_X
 ClientSampled :
 VX1220WBL02

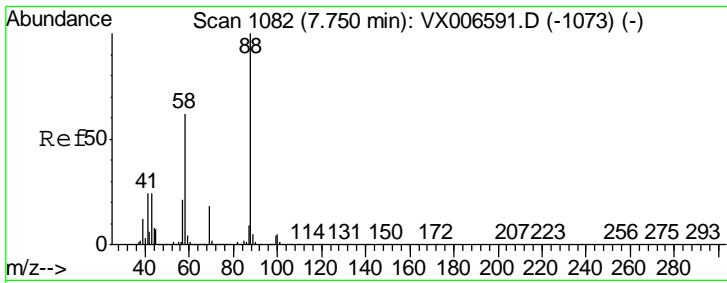
Tgt Ion	Resp	Lower	Upper
75	42356		
75	100		
110	10.0	20.2	60.5#
77	0.1	24.8	37.2#



#38
 Carbon Tetrachloride
 Concen: 7.326 ug/l
 RT: 5.67 min Scan# 740
 Delta R.T. -0.12 min
 Lab File: VX006690.D
 Acq: 20 Dec 2018 22:27

Tgt Ion	Resp	Lower	Upper
117	59079		
117	100		
119	4.2	79.4	119.2#
121	0.0	24.0	36.0#

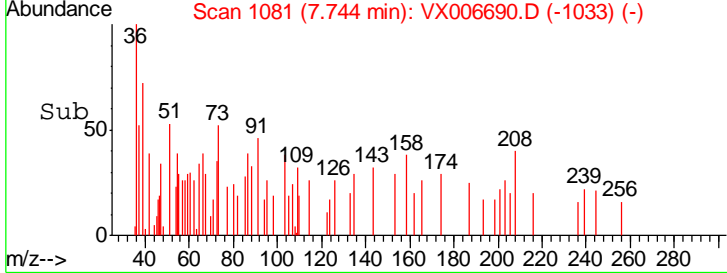
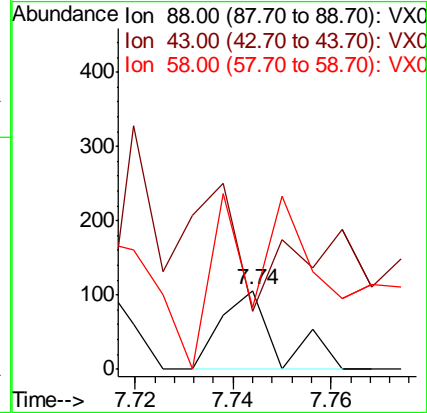
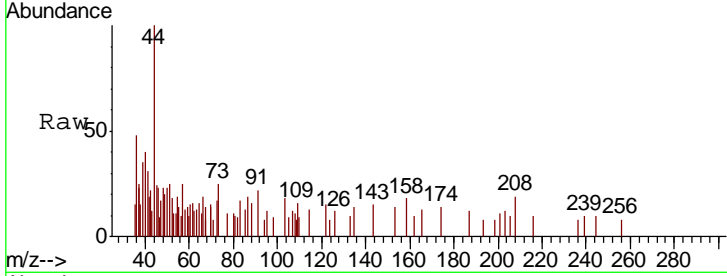




#49
 1,4-Dioxane
 Concen: Below Cal
 RT: 7.74 min Scan# 1081
 Delta R.T. -0.01 min
 Lab File: VX006690.D
 Acq: 20 Dec 2018 22:27

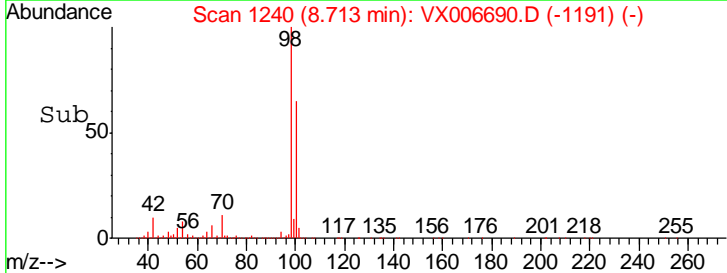
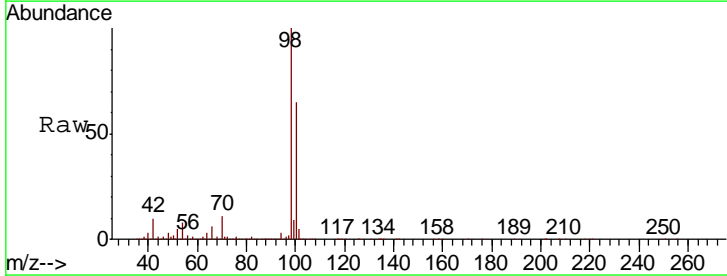
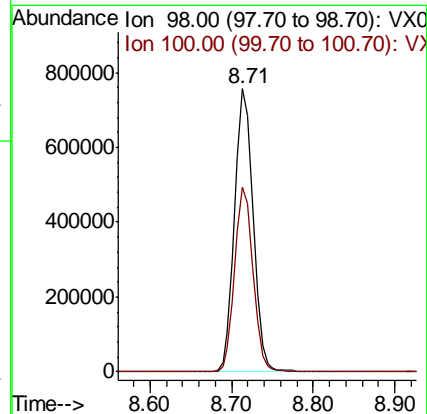
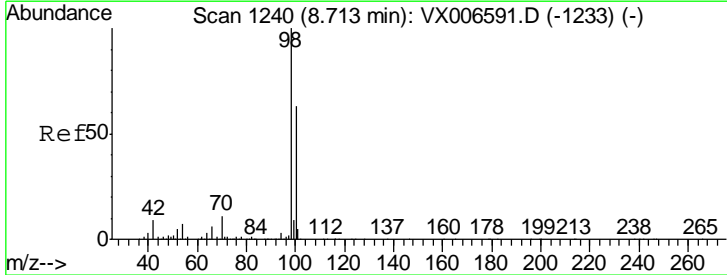
Instrument :
 MSVOA_X
 ClientSampleID :
 VX1220WBL02

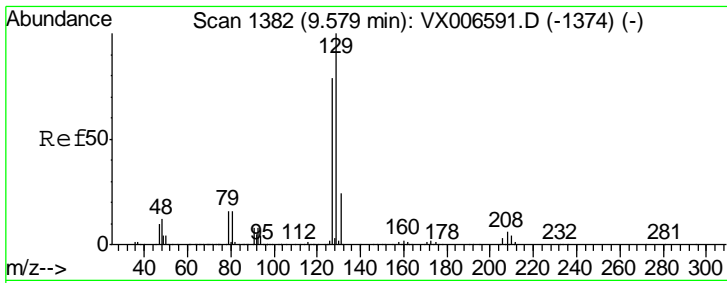
Tgt Ion	Resp	Lower	Upper
88	100		
43	0.0	22.2	33.4#
58	432.9	51.0	76.4#



#50
 Toluene-d8
 Concen: 49.553 ug/l
 RT: 8.71 min Scan# 1240
 Delta R.T. -0.00 min
 Lab File: VX006690.D
 Acq: 20 Dec 2018 22:27

Tgt Ion	Resp	Lower	Upper
98	100		
100	64.4	52.0	78.0

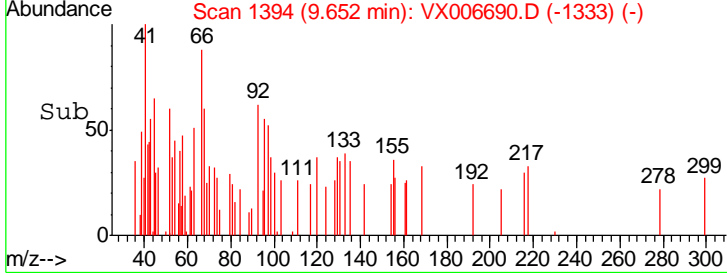
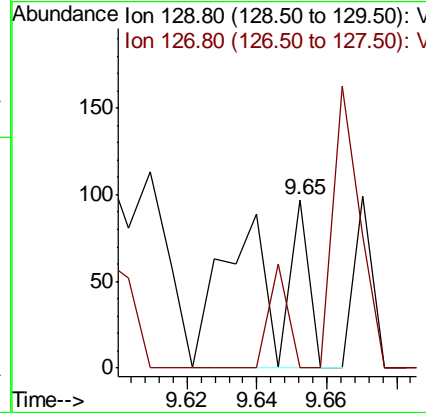
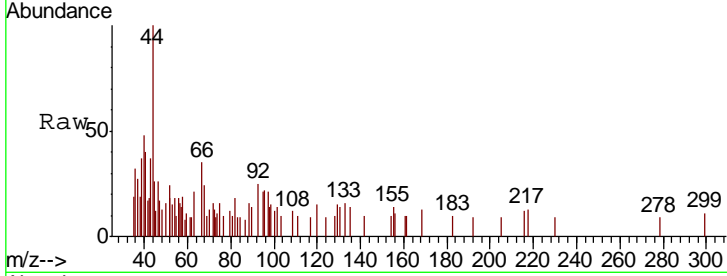




#60
 Dibromochloromethane
 Concen: 2.340 ug/l
 RT: 9.65 min Scan# 1394
 Delta R.T. 0.07 min
 Lab File: VX006690.D
 Acq: 20 Dec 2018 22:27

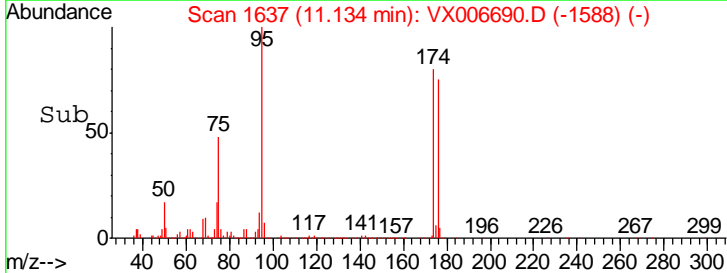
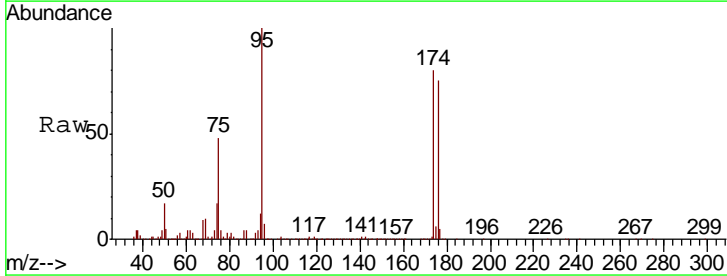
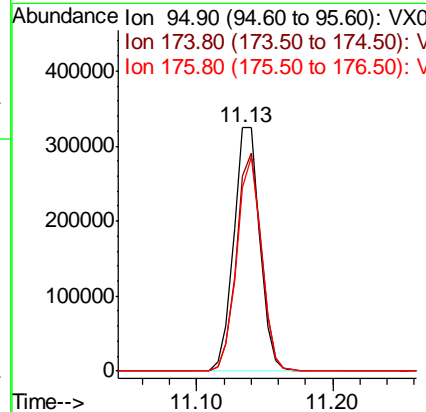
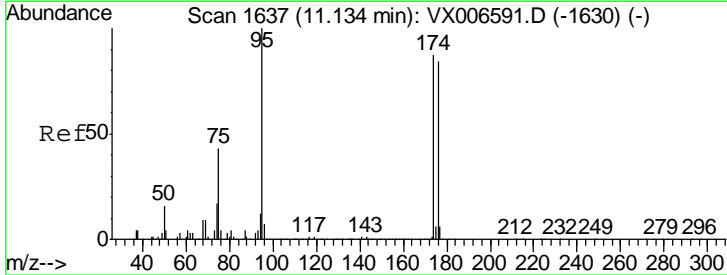
Instrument :
 MSVOA_X
 ClientSampled :
 VX1220WBL02

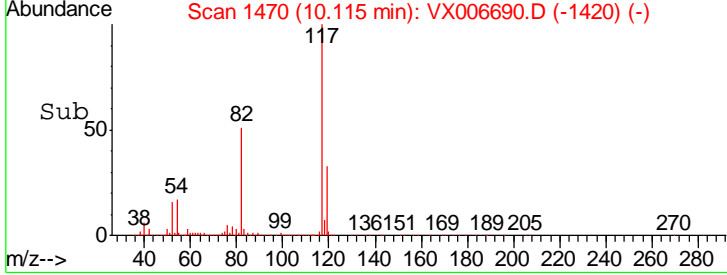
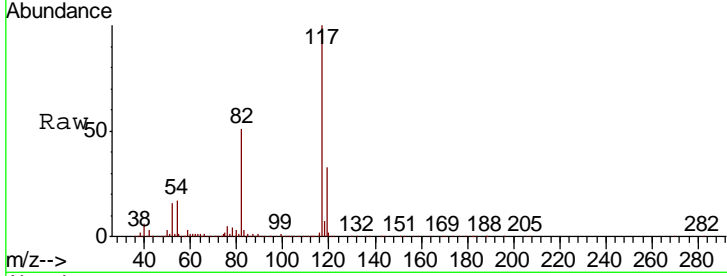
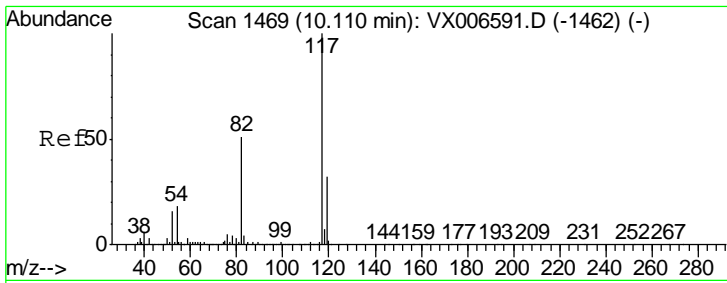
Tgt Ion	Resp	Lower	Upper
129	113		
127	96.5	39.3	117.8



#62
 4-Bromofluorobenzene
 Concen: 49.370 ug/l
 RT: 11.13 min Scan# 1637
 Delta R.T. -0.00 min
 Lab File: VX006690.D
 Acq: 20 Dec 2018 22:27

Tgt Ion	Resp	Lower	Upper
95	431886		
174	86.0	0.0	182.2
176	83.7	0.0	178.8

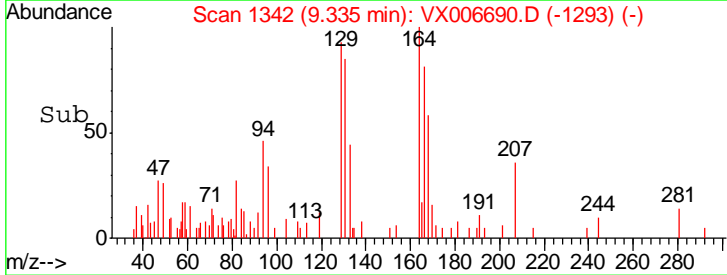
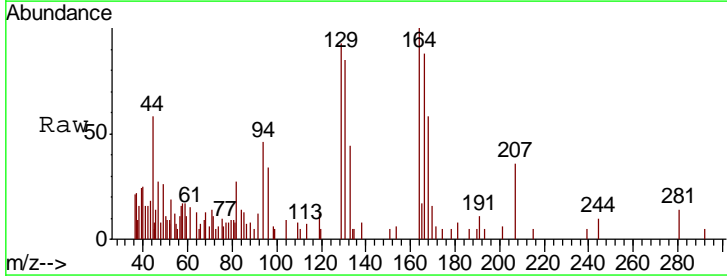
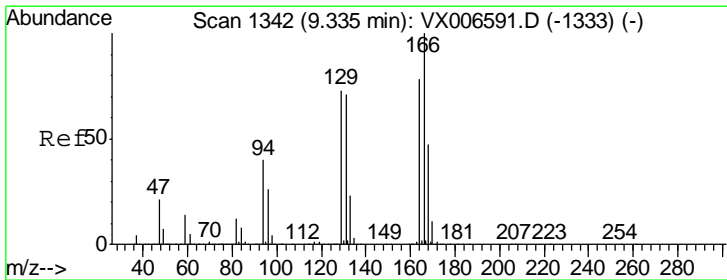
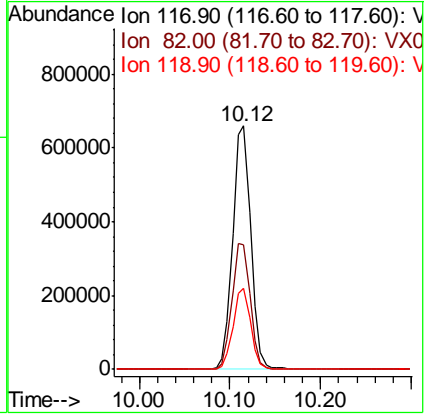




#63
 Chlorobenzene-d5
 Concen: 50.000 ug/l
 RT: 10.12 min Scan# 1470
 Delta R.T. 0.01 min
 Lab File: VX006690.D
 Acq: 20 Dec 2018 22:27

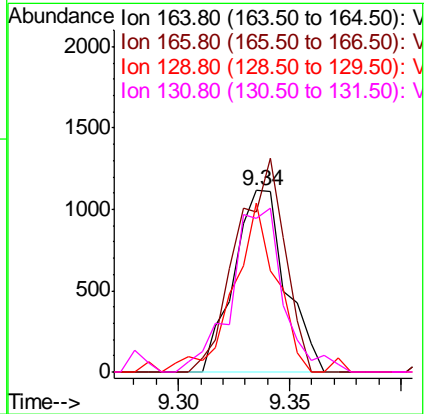
Instrument : MSVOA_X
 ClientSampled : VX1220WBL02

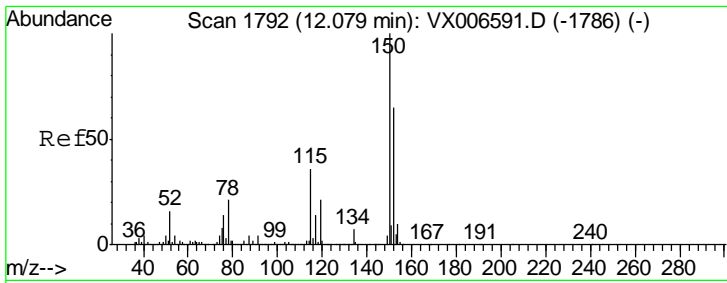
Tgt Ion	Resp	Lower	Upper
117	914949		
82	50.9	41.0	61.6
119	33.1	25.4	38.0



#64
 Tetrachloroethene
 Concen: 0.250 ug/l
 RT: 9.34 min Scan# 1342
 Delta R.T. -0.00 min
 Lab File: VX006690.D
 Acq: 20 Dec 2018 22:27

Tgt Ion	Resp	Lower	Upper
164	1813		
166	88.3	102.5	153.7#
129	85.5	75.1	112.7
131	80.1	72.7	109.1

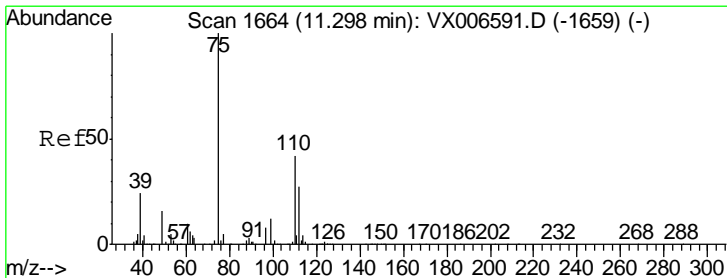
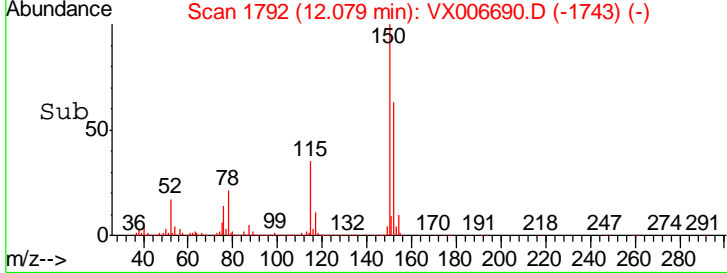
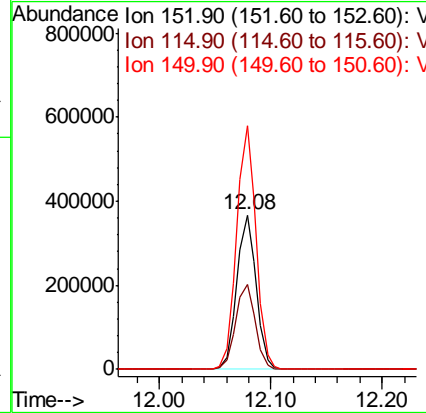
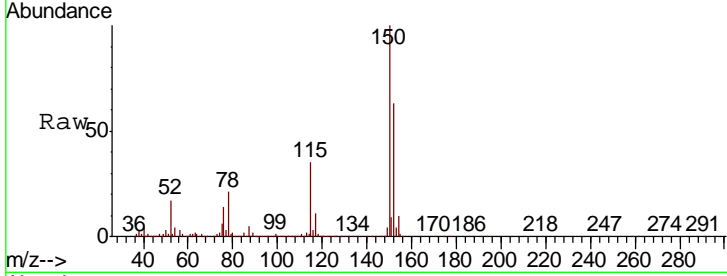




#72
 1,4-Dichlorobenzene-d4
 Concen: 50.000 ug/l
 RT: 12.08 min Scan# 1792
 Delta R.T. -0.00 min
 Lab File: VX006690.D
 Acq: 20 Dec 2018 22:27

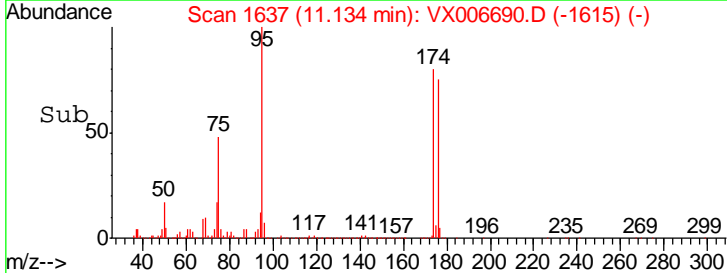
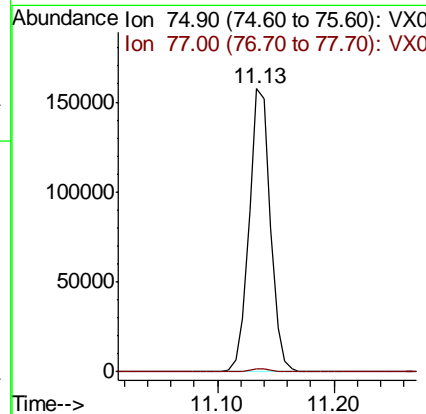
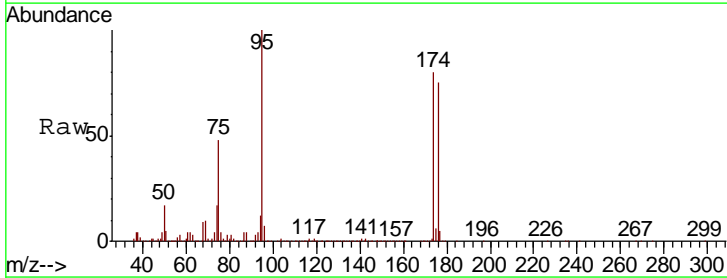
Instrument :
 MSVOA_X
 ClientSampled :
 VX1220WBL02

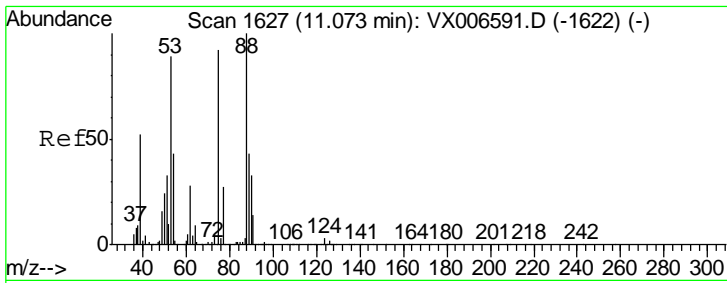
Tgt Ion	Resp	Lower	Upper
152	100		
115	56.3	39.1	117.2
150	158.0	0.0	344.8



#76
 1,2,3-Trichloropropane
 Concen: 24.639 ug/l
 RT: 11.13 min Scan# 1637
 Delta R.T. -0.16 min
 Lab File: VX006690.D
 Acq: 20 Dec 2018 22:27

Tgt Ion	Resp	Lower	Upper
75	100		
77	1.4	18.5	55.5#

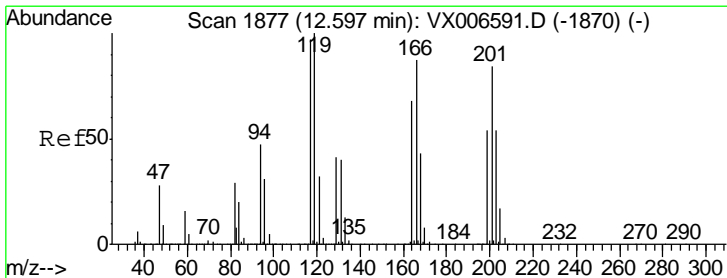
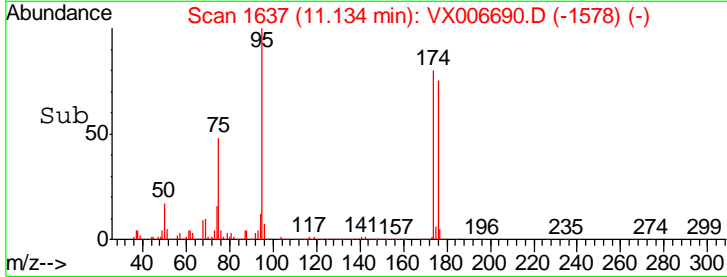
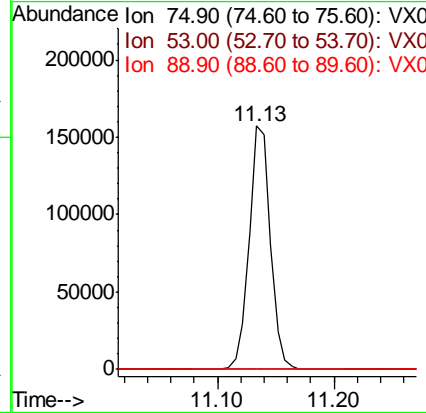
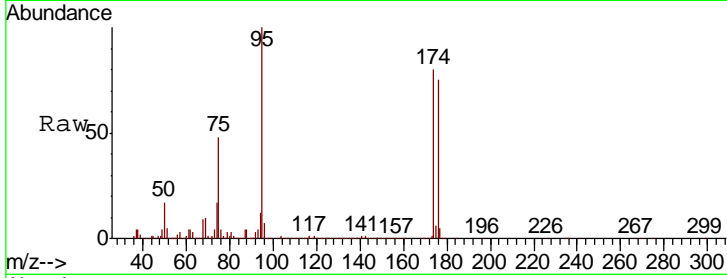




#81
 trans-1,4-Dichloro-2-butene
 Concen: 72.868 ug/l
 RT: 11.13 min Scan# 1637
 Delta R.T. 0.06 min
 Lab File: VX006690.D
 Acq: 20 Dec 2018 22:27

Instrument :
 MSVOA_X
 ClientSampled :
 VX1220WBL02

Tgt Ion	Resp	Lower	Upper
75	100		
53	0.2	79.7	119.5#
89	0.1	38.0	57.0#



#90
 Hexachloroethane
 Concen: 3.307 ug/l
 RT: 12.60 min Scan# 1877
 Delta R.T. 0.00 min
 Lab File: VX006690.D
 Acq: 20 Dec 2018 22:27

Tgt Ion	Resp	Lower	Upper
117	100		
201	114.1	42.9	128.7

