

Data Path : Z:\VOASRV\HPCHEM1\MSVOA X\DATA\VX122019\
 Data File : VX014175.D
 Acq On : 20 Dec 2019 15:39
 Operator : JC/SP
 Sample : K6379-02
 Misc : 5.0mL/MSVOA X/WATER
 ALS Vial : 14 Sample Multiplier: 1

Instrument :
 MSVOA_X
 ClientSampleId :
 MH-G

Quant Time: Dec 23 00:36:09 2019
 Quant Method : Z:\VOASRV\HPCHEM1\MSVOA_X\METHOD\82X121319W.M
 Quant Title : SW846 8260
 QLast Update : Tue Dec 17 03:01:07 2019
 Response via : Initial Calibration

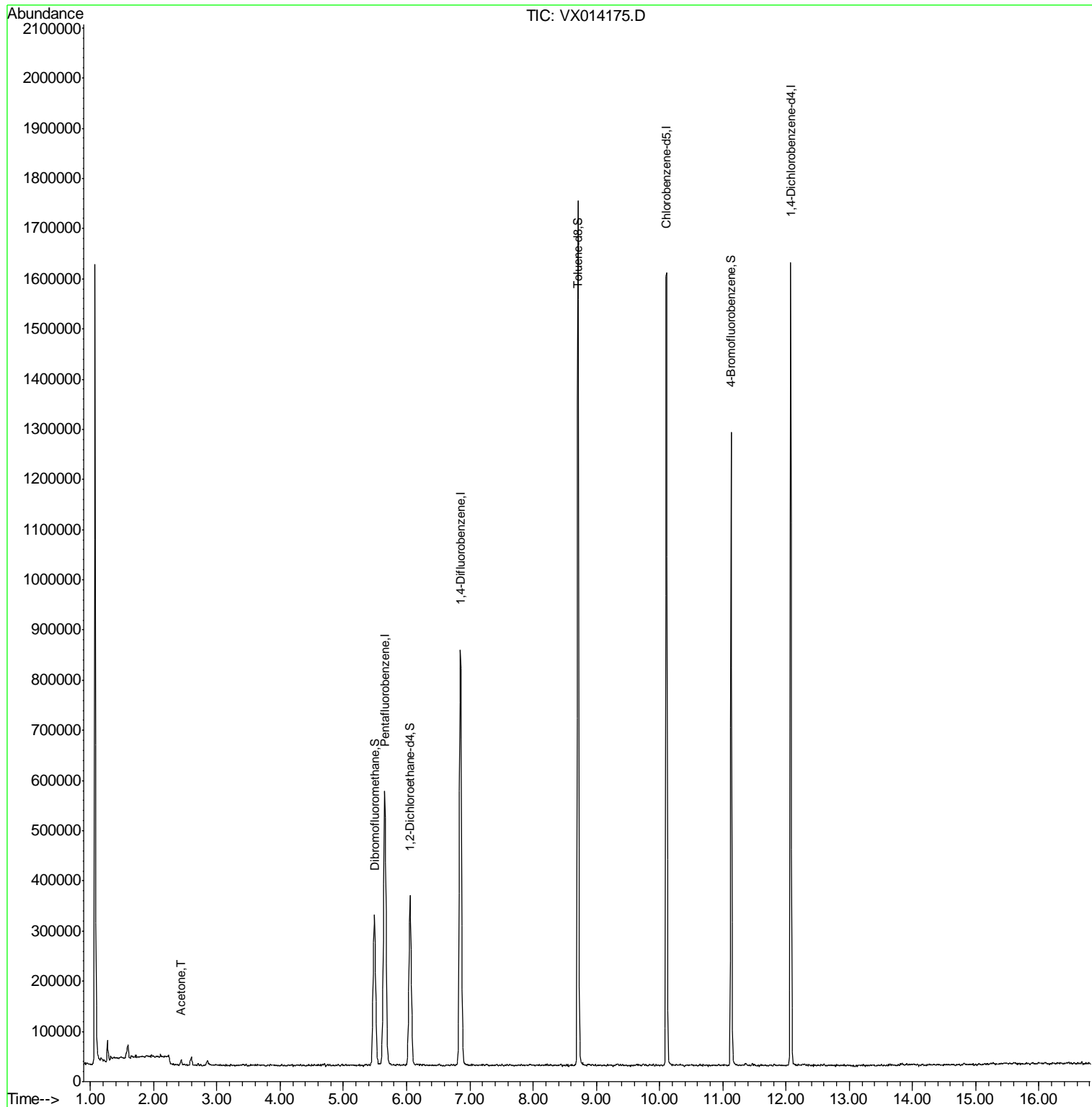
Internal Standards	R.T.	QIon	Response	Conc	Units	Dev(Min)
1) Pentafluorobenzene	5.65	168	569976	50.00	ug/l	0.00
34) 1,4-Difluorobenzene	6.85	114	853499	50.00	ug/l	0.00
63) Chlorobenzene-d5	10.11	117	772814	50.00	ug/l	0.00
72) 1,4-Dichlorobenzene-d4	12.07	152	345490	50.00	ug/l	0.00
System Monitoring Compounds						
33) 1,2-Dichloroethane-d4	6.05	65	314077	48.62	ug/l	0.00
Spiked Amount	50.000		Recovery	=	97.24%	
35) Dibromofluoromethane	5.49	113	257275	49.59	ug/l	0.00
Spiked Amount	50.000		Recovery	=	99.18%	
50) Toluene-d8	8.71	98	1019464	50.47	ug/l	0.00
Spiked Amount	50.000		Recovery	=	100.94%	
62) 4-Bromofluorobenzene	11.14	95	340332	46.09	ug/l	0.00
Spiked Amount	50.000		Recovery	=	92.18%	
Target Compounds						
16) Acetone	2.44	43	9299	2.217	ug/l	90

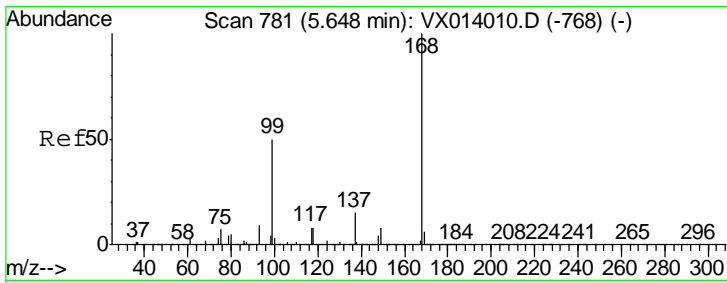
(#) = qualifier out of range (m) = manual integration (+) = signals summed

Data Path : Z:\VOASRV\HPCHEM1\MSVOA X\DATA\VX122019\
 Data File : VX014175.D
 Acq On : 20 Dec 2019 15:39
 Operator : JC/SP
 Sample : K6379-02
 Misc : 5.0mL/MSVOA X/WATER
 ALS Vial : 14 Sample Multiplier: 1

Instrument :
 MSVOA_X
 ClientSampled :
 MH-G

Quant Time: Dec 23 00:36:09 2019
 Quant Method : Z:\VOASRV\HPCHEM1\MSVOA_X\METHOD\82X121319W.M
 Quant Title : SW846 8260
 QLast Update : Tue Dec 17 03:01:07 2019
 Response via : Initial Calibration

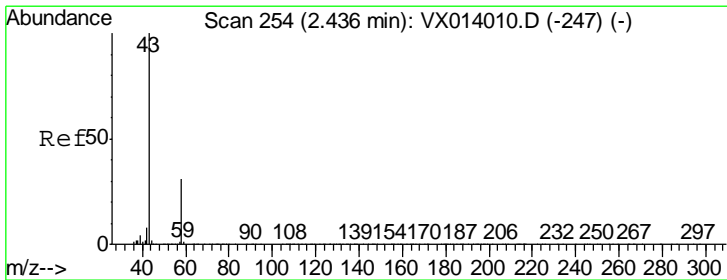
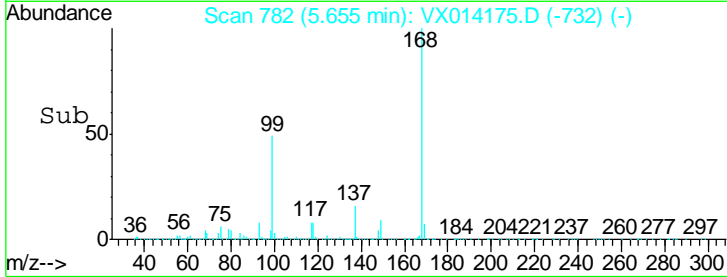
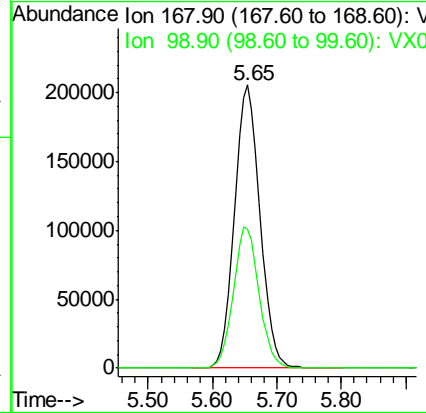
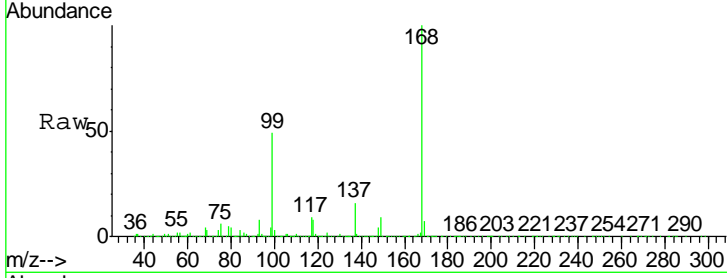




#1
 Pentafluorobenzene
 Concen: 50.000 ug/l
 RT: 5.65 min Scan# 782
 Delta R.T. 0.01 min
 Lab File: VX014175.D
 Acq: 20 Dec 2019 15:39

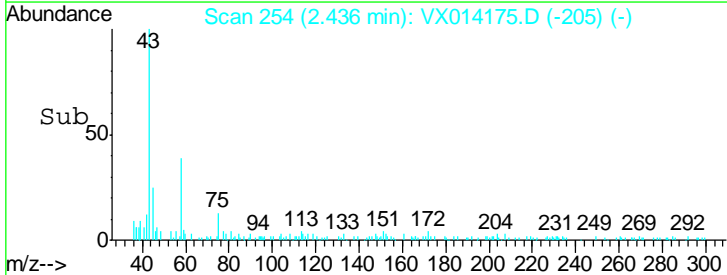
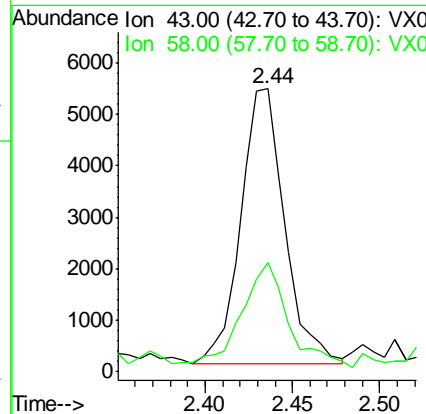
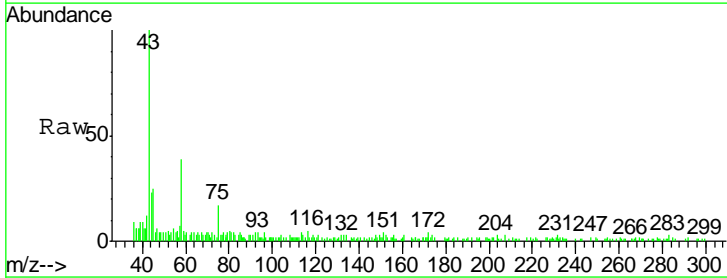
Instrument :
 MSVOA_X
 ClientSampled :
 MH-G

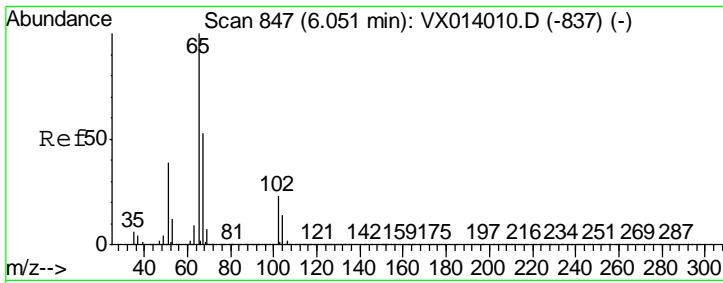
Tgt Ion	Resp	Lower	Upper
168	100		
99	49.1	40.3	60.5



#16
 Acetone
 Concen: 2.217 ug/l
 RT: 2.44 min Scan# 254
 Delta R.T. 0.00 min
 Lab File: VX014175.D
 Acq: 20 Dec 2019 15:39

Tgt Ion	Resp	Lower	Upper
43	100		
58	36.4	24.9	37.3

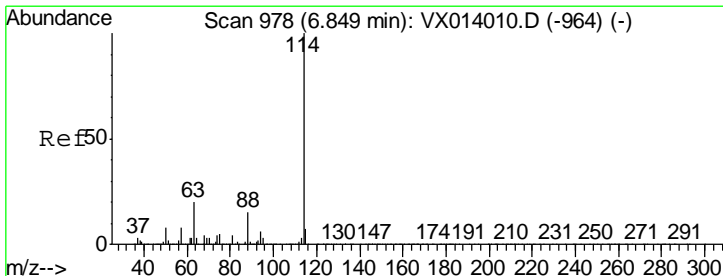
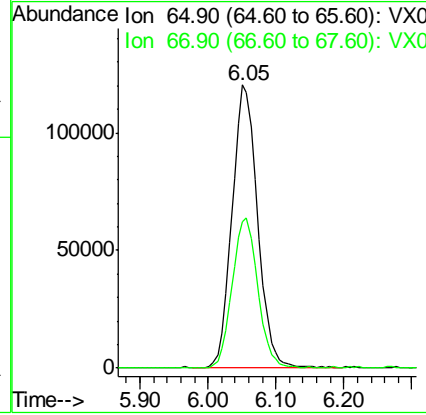
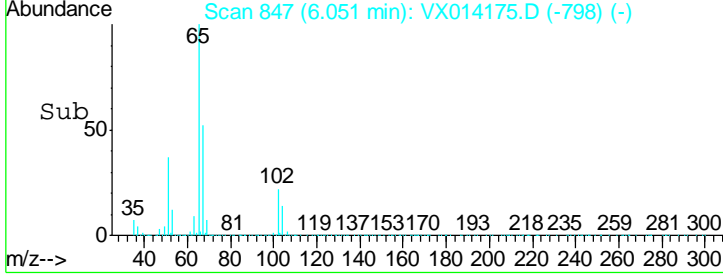
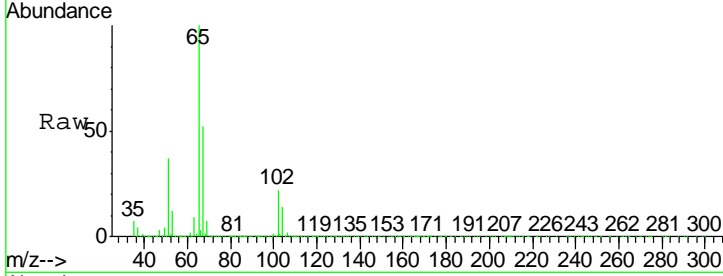




#33
 1,2-Dichloroethane-d4
 Concen: 48.620 ug/l
 RT: 6.05 min Scan# 847
 Delta R.T. 0.00 min
 Lab File: VX014175.D
 Acq: 20 Dec 2019 15:39

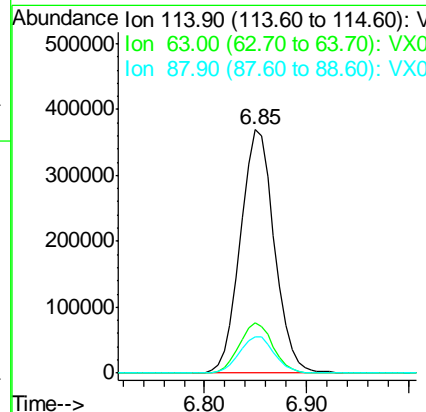
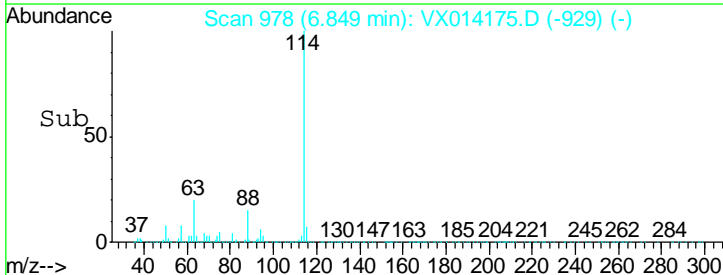
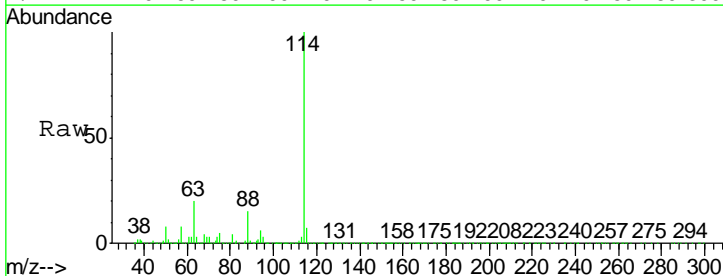
Instrument :
 MSVOA_X
 ClientSampled :
 MH-G

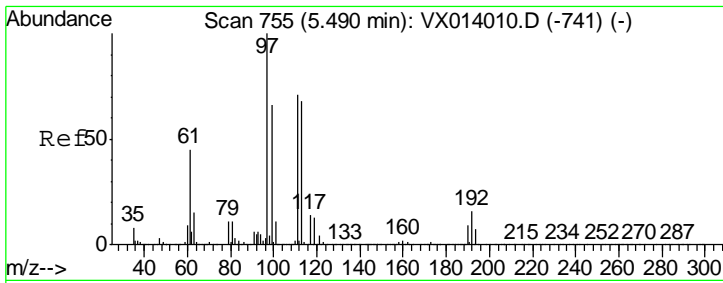
Tgt Ion	Resp	Lower	Upper
65	314077		
67	52.5	0.0	106.4



#34
 1,4-Difluorobenzene
 Concen: 50.000 ug/l
 RT: 6.85 min Scan# 978
 Delta R.T. 0.00 min
 Lab File: VX014175.D
 Acq: 20 Dec 2019 15:39

Tgt Ion	Resp	Lower	Upper
114	853499		
63	20.4	0.0	40.8
88	14.9	0.0	30.4

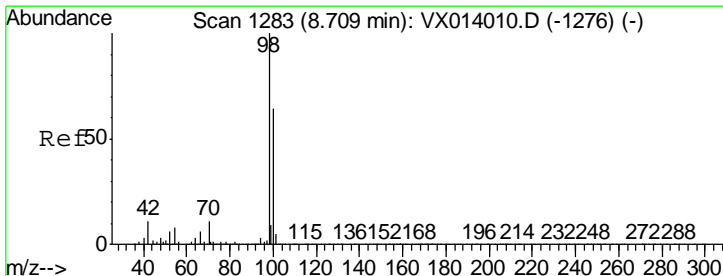
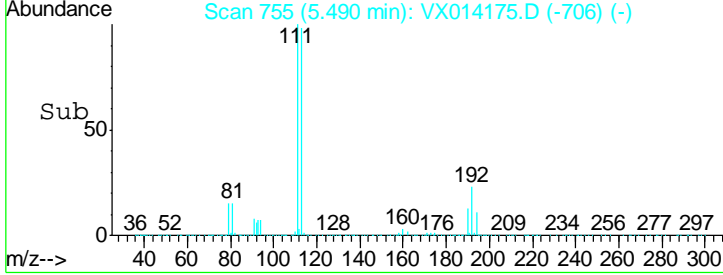
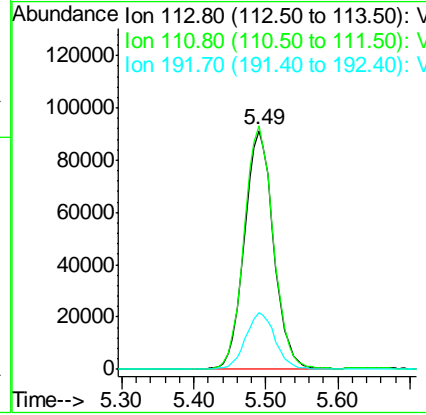
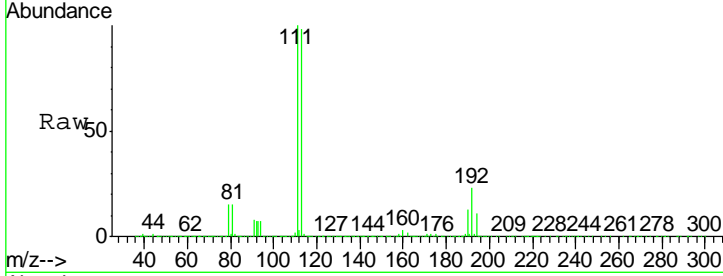




#35
 Dibromofluoromethane
 Concen: 49.587 ug/l
 RT: 5.49 min Scan# 755
 Delta R.T. 0.00 min
 Lab File: VX014175.D
 Acq: 20 Dec 2019 15:39

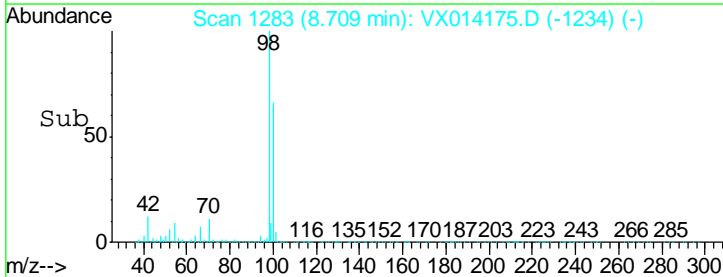
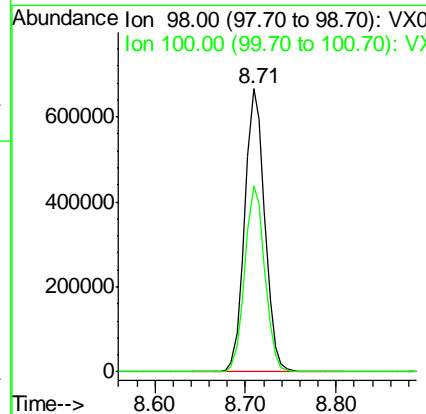
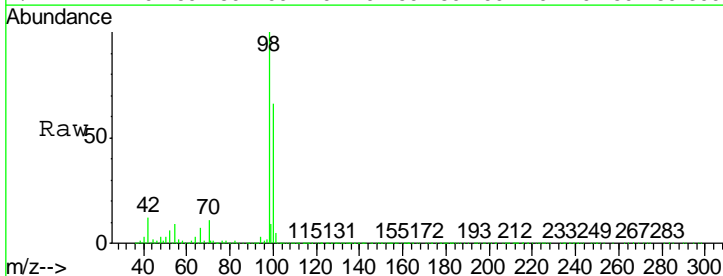
Instrument :
 MSVOA_X
ClientSampled :
 MH-G

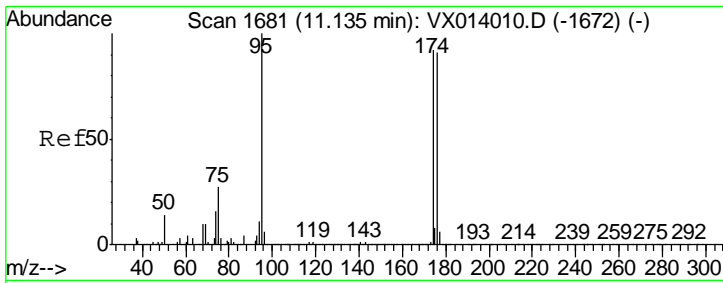
Tgt Ion	Resp	Lower	Upper
113	100		
111	101.8	82.0	123.0
192	24.0	19.3	28.9



#50
 Toluene-d8
 Concen: 50.470 ug/l
 RT: 8.71 min Scan# 1283
 Delta R.T. 0.00 min
 Lab File: VX014175.D
 Acq: 20 Dec 2019 15:39

Tgt Ion	Resp	Lower	Upper
98	100		
100	65.8	52.9	79.3

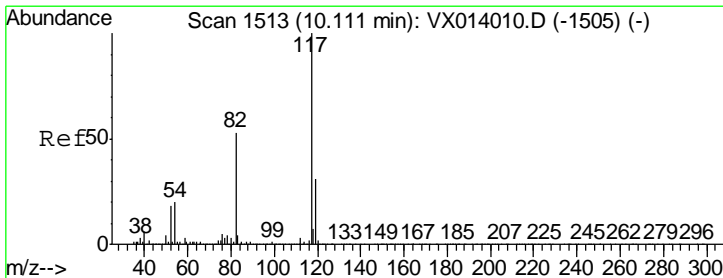
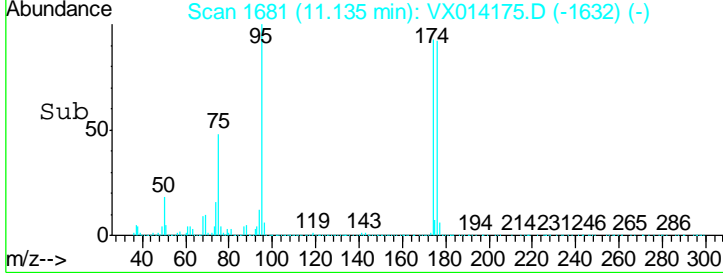
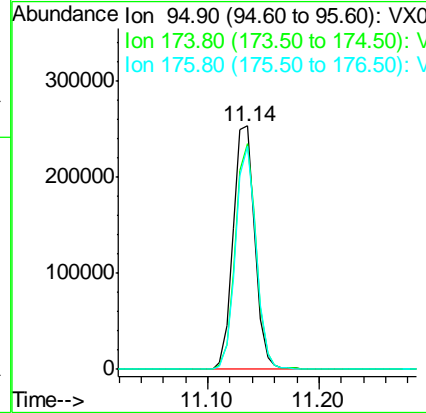
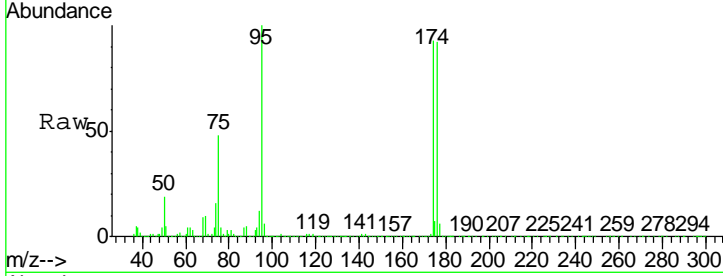




#62
 4-Bromofluorobenzene
 Concen: 46.092 ug/l
 RT: 11.14 min Scan# 1681
 Delta R.T. 0.00 min
 Lab File: VX014175.D
 Acq: 20 Dec 2019 15:39

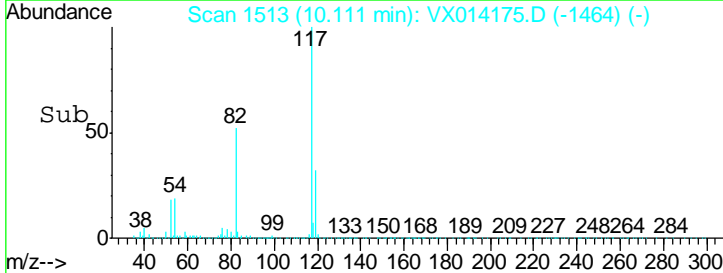
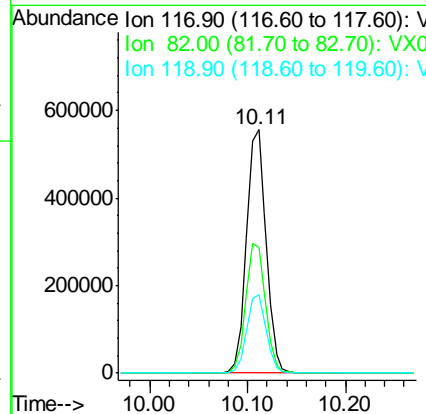
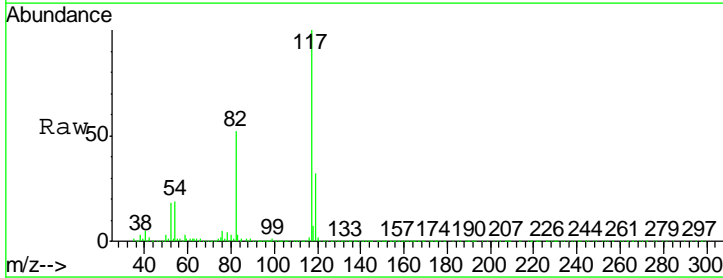
Instrument :
 MSVOA_X
 ClientSampled :
 MH-G

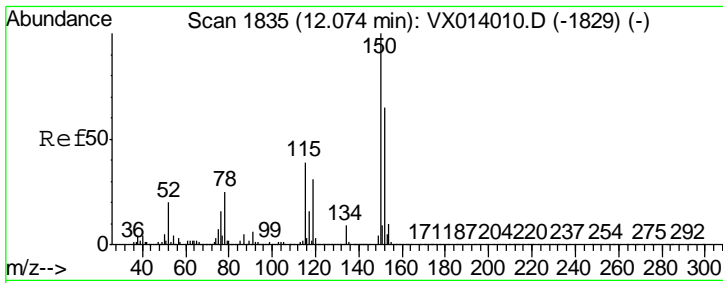
Tgt Ion	Resp	Lower	Upper
95	100		
174	89.2	0.0	175.8
176	87.3	0.0	173.0



#63
 Chlorobenzene-d5
 Concen: 50.000 ug/l
 RT: 10.11 min Scan# 1513
 Delta R.T. 0.00 min
 Lab File: VX014175.D
 Acq: 20 Dec 2019 15:39

Tgt Ion	Resp	Lower	Upper
117	100		
82	51.7	42.2	63.4
119	32.2	25.1	37.7





#72
 1,4-Dichlorobenzene-d4
 Concen: 50.000 ug/l
 RT: 12.07 min Scan# 1835
 Delta R.T. 0.00 min
 Lab File: VX014175.D
 Acq: 20 Dec 2019 15:39

Instrument :
 MSVOA_X
 ClientSampled :
 MH-G

Tot Ion	Resp	Lower	Upper
152	100		
115	54.0	38.3	114.9
150	154.9	0.0	345.4

