

Data Path : Z:\VOASRV\HPCHEM1\MSVOA X\DATA\WX122019\
 Data File : VX014182.D
 Acq On : 20 Dec 2019 18:22
 Operator : JC/SP
 Sample : K6372-17DL 10X
 Misc : 5.0mL/MSVOA X/WATER
 ALS Vial : 21 Sample Multiplier: 1

Instrument :
 MSVOA_X
ClientSampled :
 MW-12DL

Manual Integrations
APPROVED
 apatel
 12/23/2019 10:25:17 AM

Quant Time: Dec 23 02:19:11 2019
 Quant Method : Z:\VOASRV\HPCHEM1\MSVOA_X\METHOD\82X121319W.M
 Quant Title : SW846 8260
 QLast Update : Tue Dec 17 03:01:07 2019
 Response via : Initial Calibration

Internal Standards	R.T.	QIon	Response	Conc	Units	Dev(Min)
1) Pentafluorobenzene	5.65	168	564523	50.00	ug/l	0.00
34) 1,4-Difluorobenzene	6.85	114	863088	50.00	ug/l	0.00
63) Chlorobenzene-d5	10.11	117	783007	50.00	ug/l	0.00
72) 1,4-Dichlorobenzene-d4	12.07	152	377859	50.00	ug/l	0.00

System Monitoring Compounds

33) 1,2-Dichloroethane-d4	6.05	65	314328	49.13	ug/l	0.00
Spiked Amount	50.000		Recovery	=	98.26%	
35) Dibromofluoromethane	5.49	113	255222	48.65	ug/l	0.00
Spiked Amount	50.000		Recovery	=	97.30%	
50) Toluene-d8	8.71	98	1030414	50.45	ug/l	0.00
Spiked Amount	50.000		Recovery	=	100.90%	
62) 4-Bromofluorobenzene	11.13	95	365900	49.00	ug/l	0.00
Spiked Amount	50.000		Recovery	=	98.00%	

Target Compounds

						Qvalue
39) Methylcyclohexane	7.46	83	19442	1.988	ug/l	92
40) Benzene	6.13	78	11532	0.473	ug/l	95
67) Ethyl Benzene	10.25	91	809963	28.298	ug/l	99
68) m/p-Xylenes	10.35	106	30523	2.773	ug/l	94
69) o-Xylene	10.70	106	21327	1.975	ug/l	96
73) Isopropylbenzene	11.01	105	295421	11.104	ug/l	99
78) n-propylbenzene	11.35	91	283746	9.509	ug/l	99
80) 1,3,5-Trimethylbenzene	11.50	105	198497	8.865	ug/l	99
84) 1,2,4-Trimethylbenzene	11.80	105	1178467	52.557	ug/l	99
85) sec-Butylbenzene	11.94	105	9181m	0.357	ug/l	
86) p-Isopropyltoluene	12.06	119	28441m	1.209	ug/l	
95) Naphthalene	13.83	128	6846202	277.613	ug/l	98

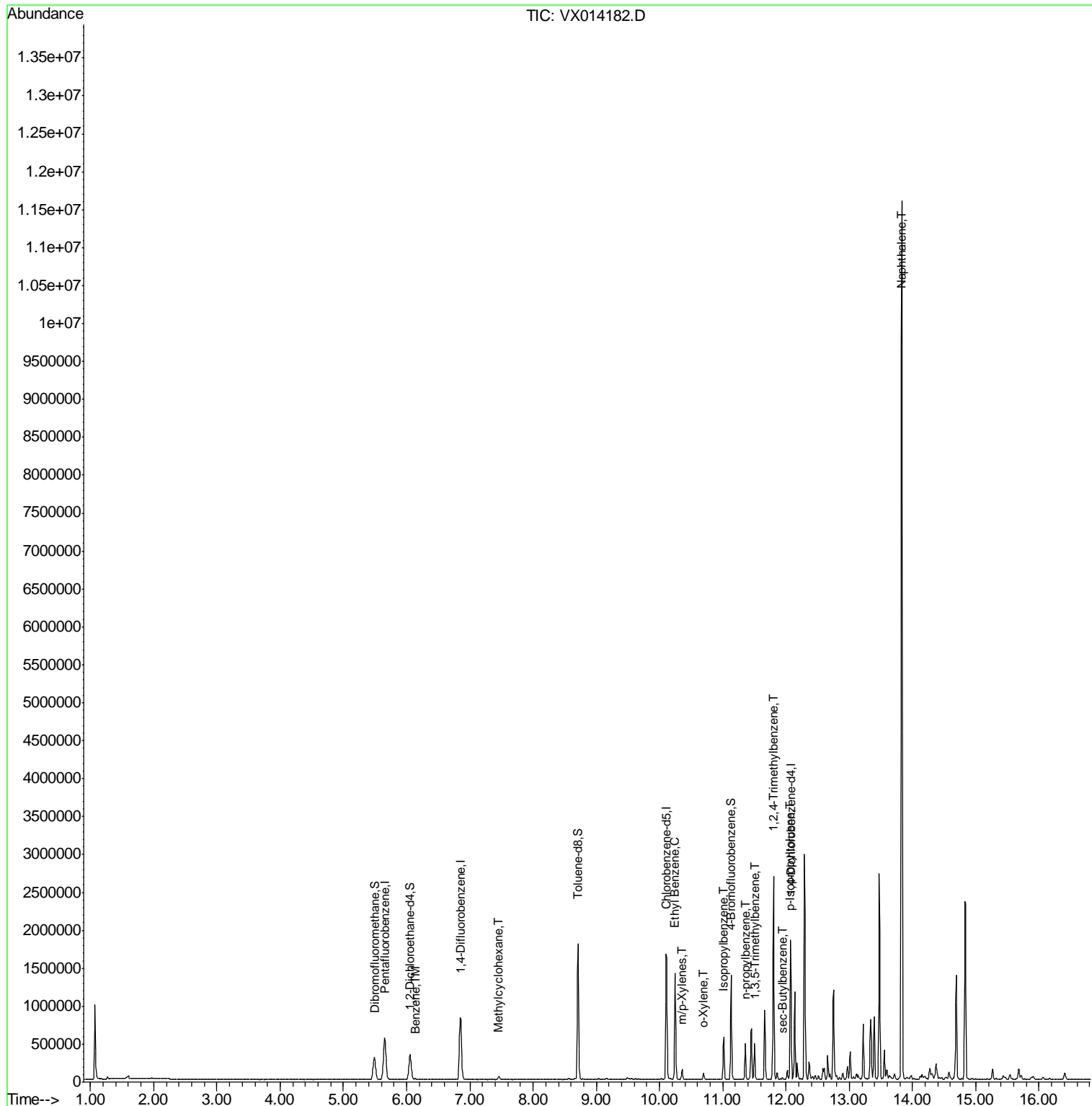
(#) = qualifier out of range (m) = manual integration (+) = signals summed

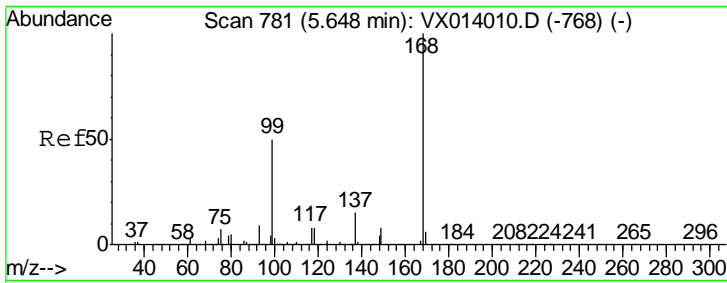
Data Path : Z:\VOASRV\HPCHEM1\MSVOA X\DATA\VX122019\
 Data File : VX014182.D
 Acq On : 20 Dec 2019 18:22
 Operator : JC/SP
 Sample : K6372-17DL 10X
 Misc : 5.0mL/MSVOA X/WATER
 ALS Vial : 21 Sample Multiplier: 1

Instrument :
 MSVOA_X
Client Sampled :
 MW-12DL

Manual Integrations
APPROVED
 apatel
 12/23/2019 10:25:17 AM

Quant Time: Dec 23 02:19:11 2019
 Quant Method : Z:\VOASRV\HPCHEM1\MSVOA_X\METHOD\82X121319W.M
 Quant Title : SW846 8260
 QLast Update : Tue Dec 17 03:01:07 2019
 Response via : Initial Calibration





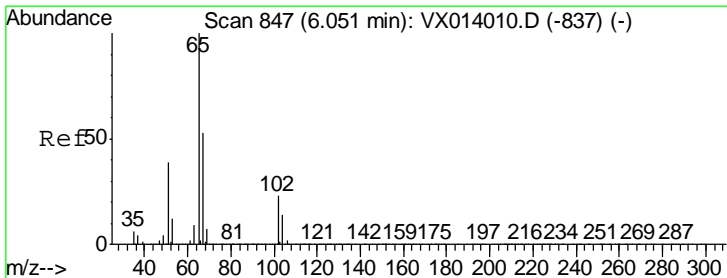
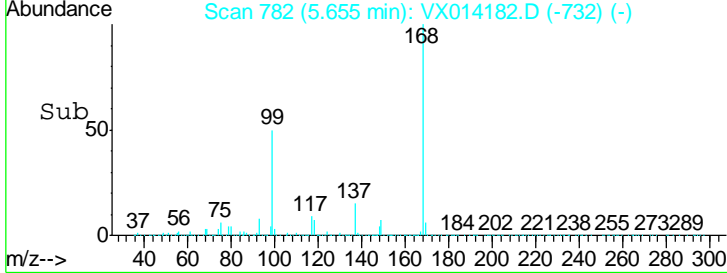
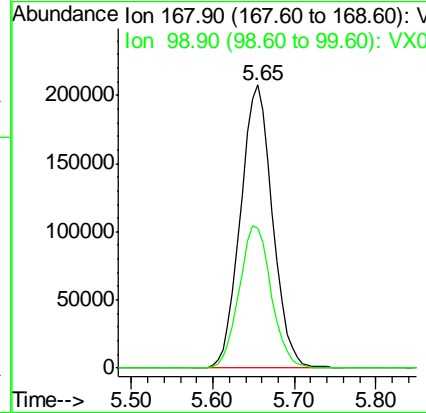
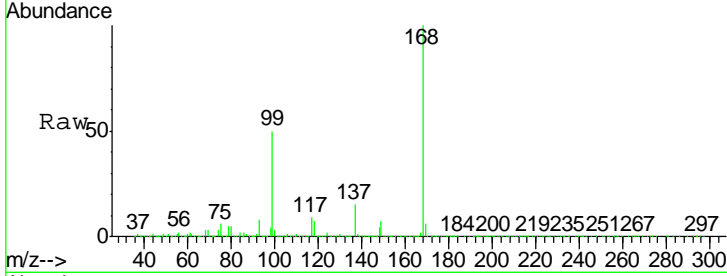
#1
 Pentafluorobenzene
 Concen: 50.000 ug/l
 RT: 5.65 min Scan# 782
 Delta R.T. 0.01 min
 Lab File: VX014182.D
 Acq: 20 Dec 2019 18:22

Instrument :
 MSVOA_X
Client Sampled :
 MW-12DL

Tgt Ion	Resp	Lower	Upper
168	100		
99	49.6	40.3	60.5

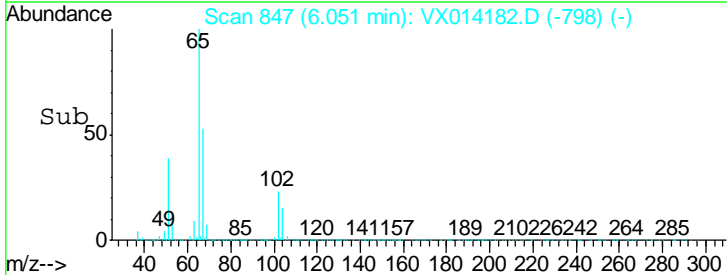
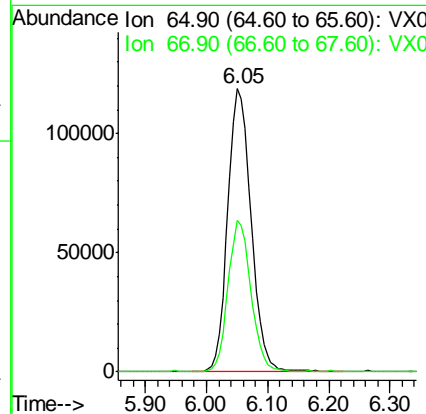
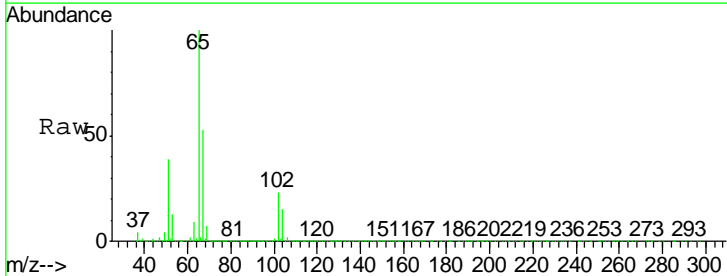
Manual Integrations
APPROVED

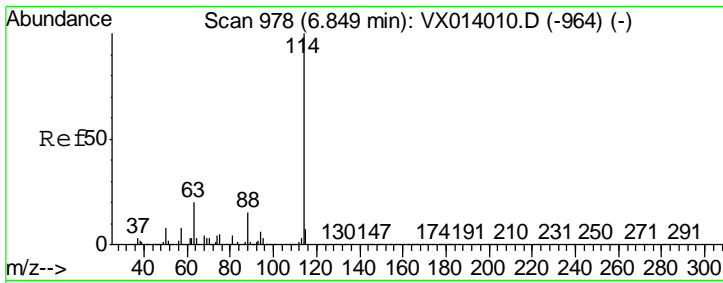
apatel
 12/23/2019 10:25:17 AM



#33
 1,2-Dichloroethane-d4
 Concen: 49.128 ug/l
 RT: 6.05 min Scan# 847
 Delta R.T. 0.00 min
 Lab File: VX014182.D
 Acq: 20 Dec 2019 18:22

Tgt Ion	Resp	Lower	Upper
65	100		
67	52.2	0.0	106.4





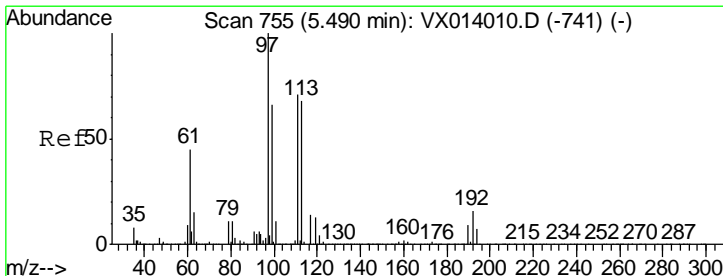
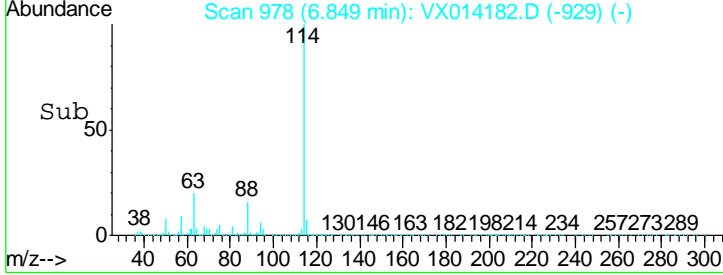
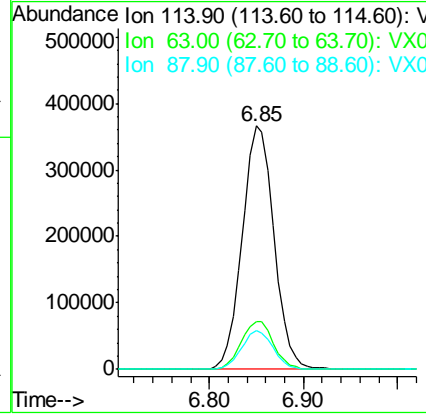
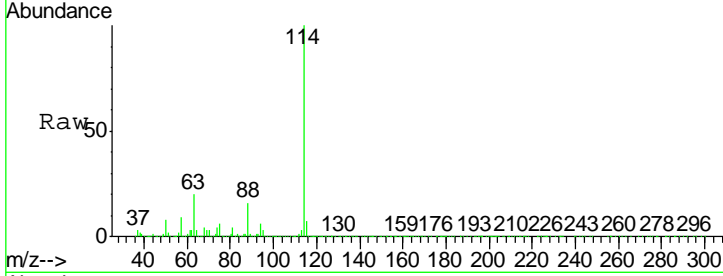
#34
 1,4-Difluorobenzene
 Concen: 50.000 ug/l
 RT: 6.85 min Scan# 978
 Delta R.T. 0.00 min
 Lab File: VX014182.D
 Acq: 20 Dec 2019 18:22

Instrument :
 MSVOA_X
Client Sampled :
 MW-12DL

Tgt Ion	Ratio	Lower	Upper
114	100		
63	19.7	0.0	40.8
88	15.7	0.0	30.4

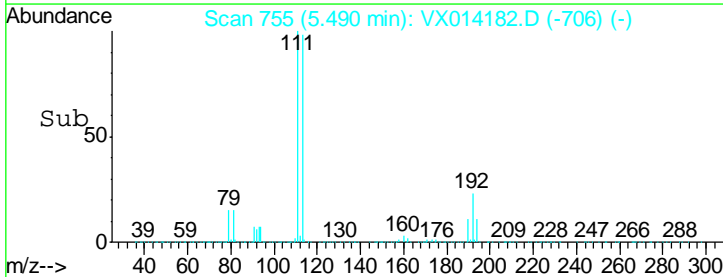
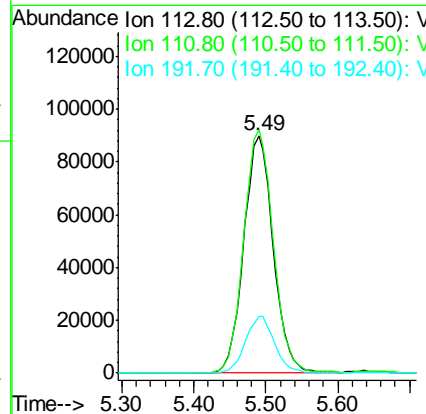
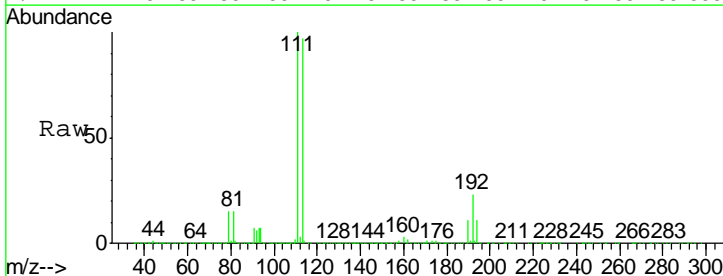
Manual Integrations
APPROVED

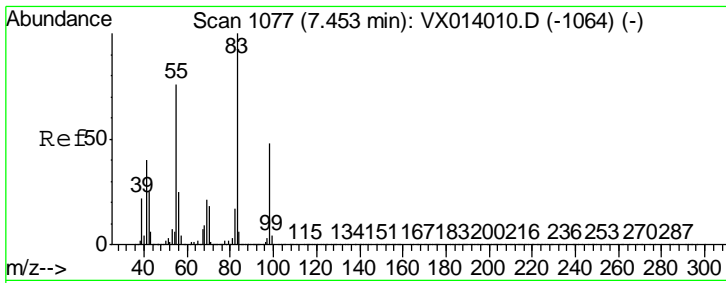
apatel
 12/23/2019 10:25:17 AM



#35
 Dibromofluoromethane
 Concen: 48.645 ug/l
 RT: 5.49 min Scan# 755
 Delta R.T. 0.00 min
 Lab File: VX014182.D
 Acq: 20 Dec 2019 18:22

Tgt Ion	Ratio	Lower	Upper
113	100		
111	103.3	82.0	123.0
192	23.2	19.3	28.9





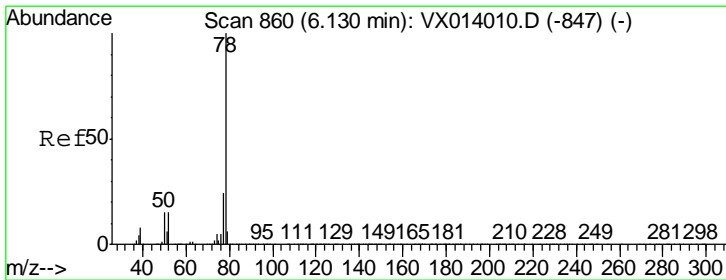
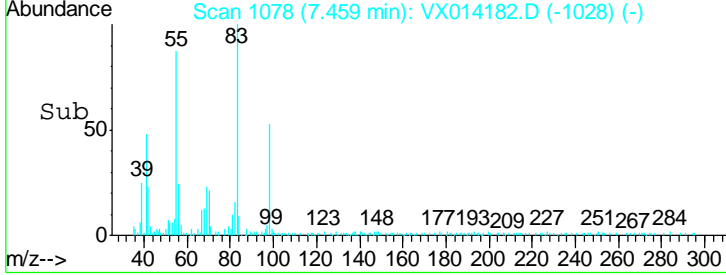
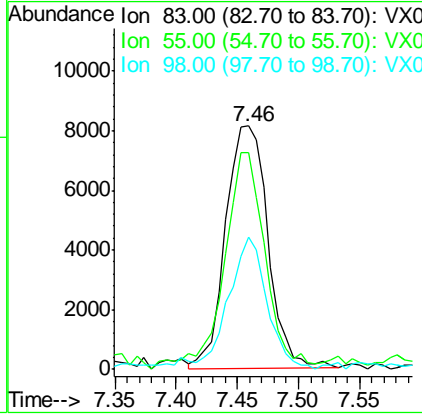
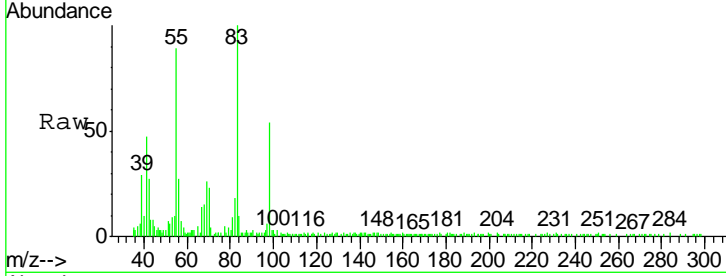
#39
 Methylcyclohexane
 Concen: 1.988 ug/l
 RT: 7.46 min Scan# 1078
 Delta R.T. 0.01 min
 Lab File: VX014182.D
 Acq: 20 Dec 2019 18:22

Instrument :
 MSVOA_X
Client Sampled :
 MW-12DL

Tgt Ion	Resp	Lower	Upper
83	19442		
83	100		
55	84.1	61.0	91.6
98	52.0	38.6	57.8

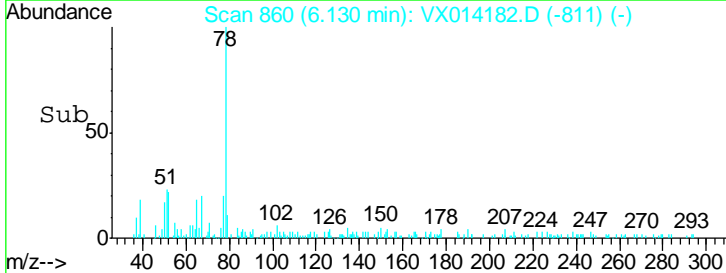
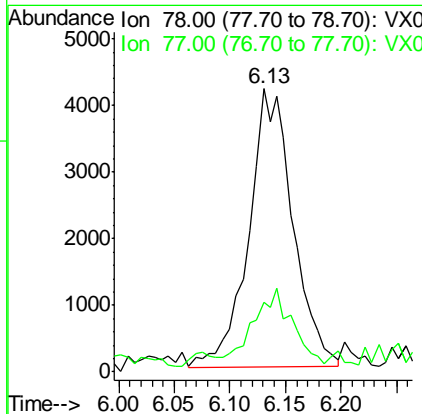
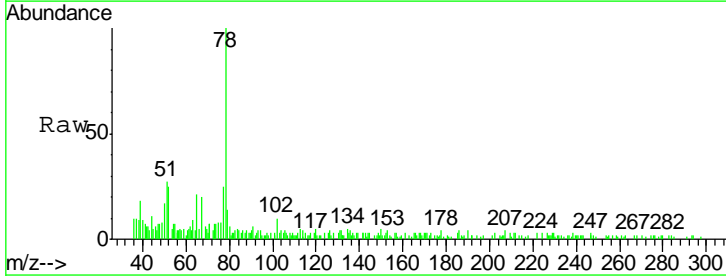
Manual Integrations
APPROVED

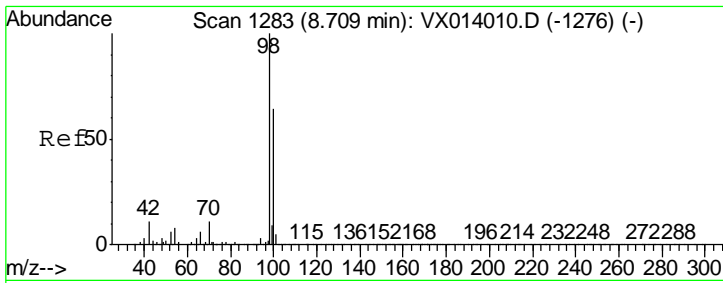
apatel
 12/23/2019 10:25:17 AM



#40
 Benzene
 Concen: 0.473 ug/l
 RT: 6.13 min Scan# 860
 Delta R.T. 0.00 min
 Lab File: VX014182.D
 Acq: 20 Dec 2019 18:22

Tgt Ion	Resp	Lower	Upper
78	11532		
78	100		
77	21.2	18.8	28.2





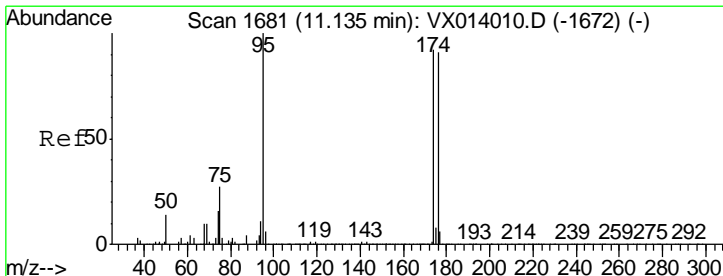
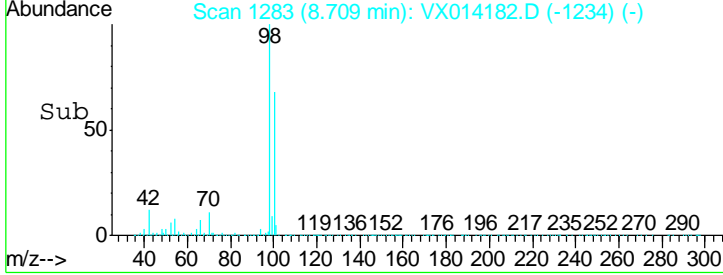
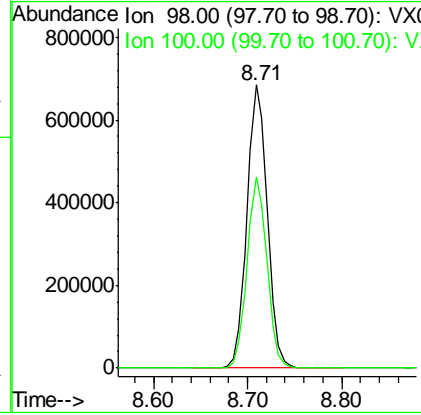
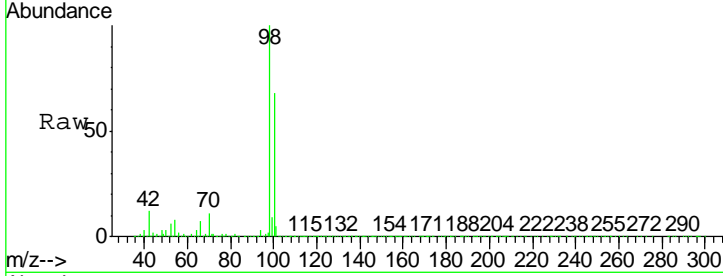
#50
 Toluene-d8
 Concen: 50.445 ug/l
 RT: 8.71 min Scan# 1283
 Delta R.T. 0.00 min
 Lab File: VX014182.D
 Acq: 20 Dec 2019 18:22

Instrument :
 MSVOA_X
Client Sampled :
 MW-12DL

Tgt Ion	Resp	Lower	Upper
98	1030414		
98	100		
100	66.0	52.9	79.3

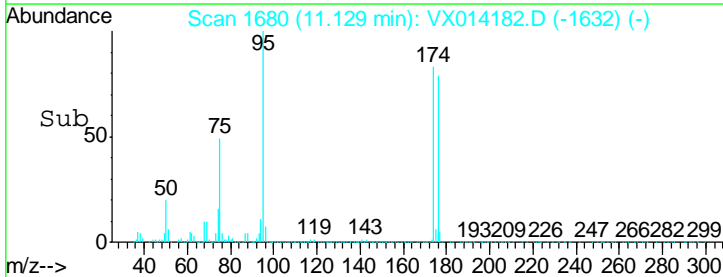
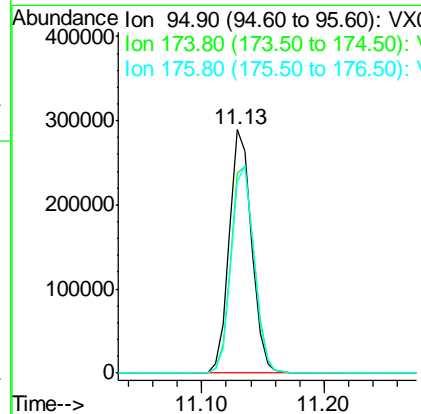
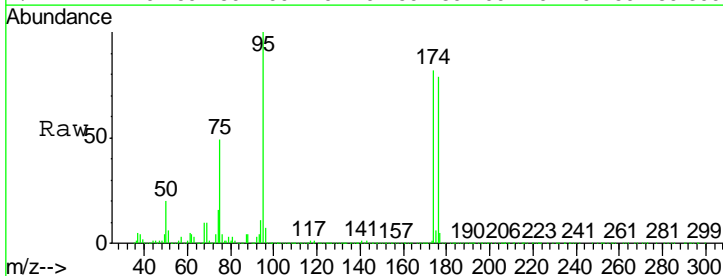
Manual Integrations
APPROVED

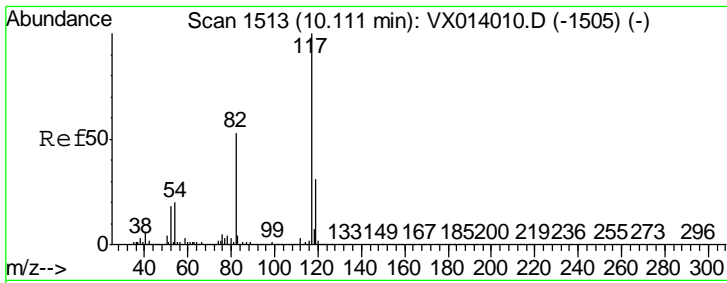
apatel
 12/23/2019 10:25:17 AM



#62
 4-Bromofluorobenzene
 Concen: 49.004 ug/l
 RT: 11.13 min Scan# 1680
 Delta R.T. -0.01 min
 Lab File: VX014182.D
 Acq: 20 Dec 2019 18:22

Tgt Ion	Resp	Lower	Upper
95	365900		
95	100		
174	88.7	0.0	175.8
176	86.3	0.0	173.0





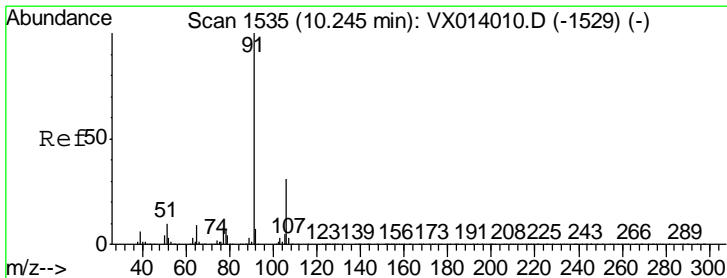
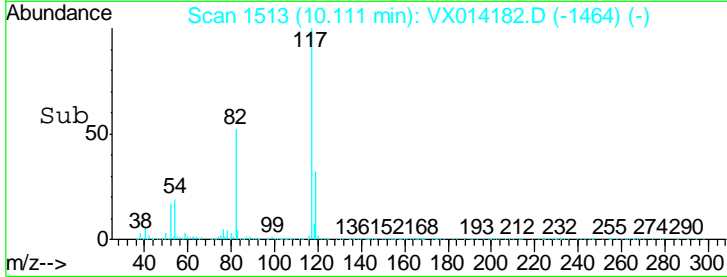
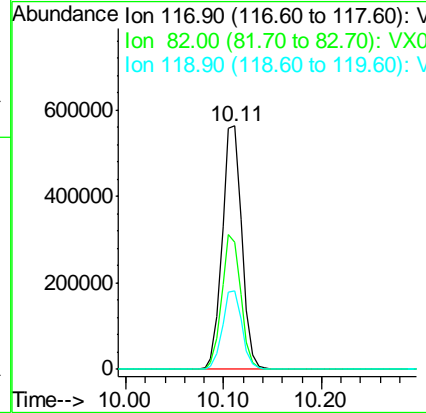
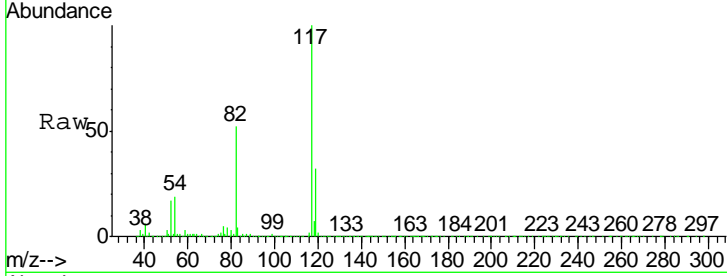
#63
 Chlorobenzene-d5
 Concen: 50.000 ug/l
 RT: 10.11 min Scan# 1513
 Delta R.T. 0.00 min
 Lab File: VX014182.D
 Acq: 20 Dec 2019 18:22

Instrument : MSVOA_X
 ClientSampled : MW-12DL

Tgt Ion	Resp	Lower	Upper
117	783007		
82	51.9	42.2	63.4
119	32.0	25.1	37.7

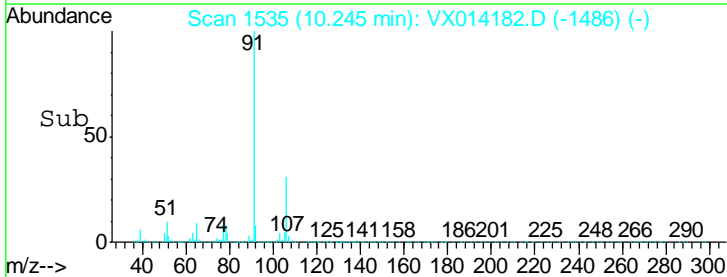
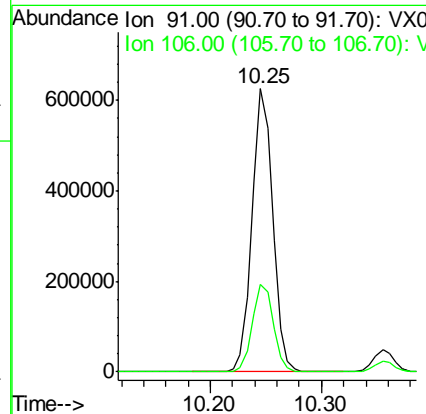
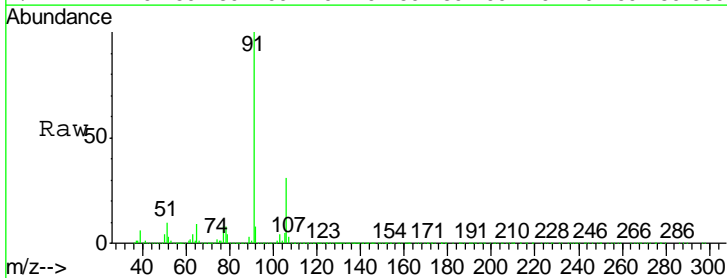
Manual Integrations
 APPROVED

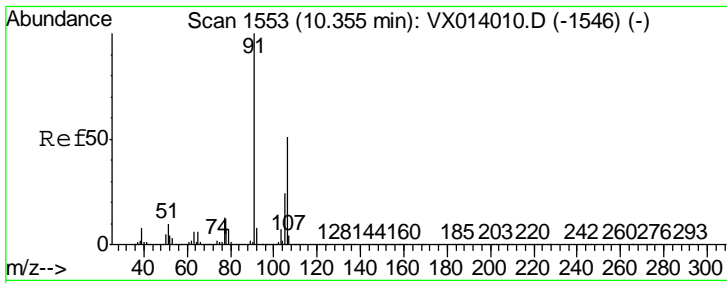
apatel
 12/23/2019 10:25:17 AM



#67
 Ethyl Benzene
 Concen: 28.298 ug/l
 RT: 10.25 min Scan# 1535
 Delta R.T. 0.00 min
 Lab File: VX014182.D
 Acq: 20 Dec 2019 18:22

Tgt Ion	Resp	Lower	Upper
91	809963		
106	30.7	25.0	37.6





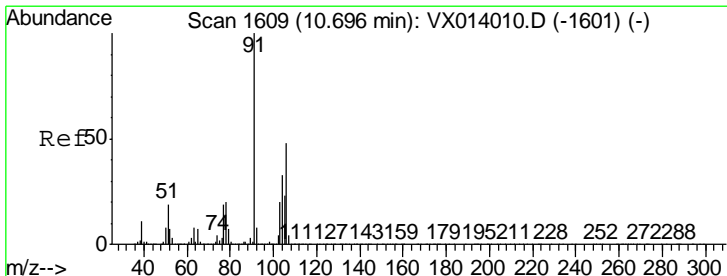
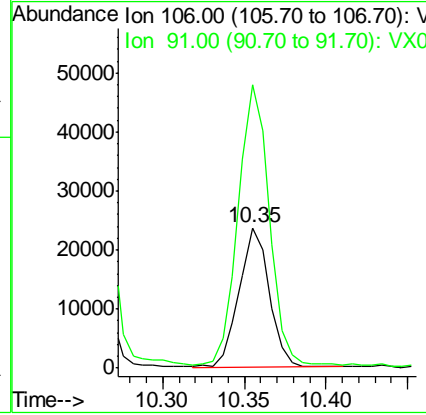
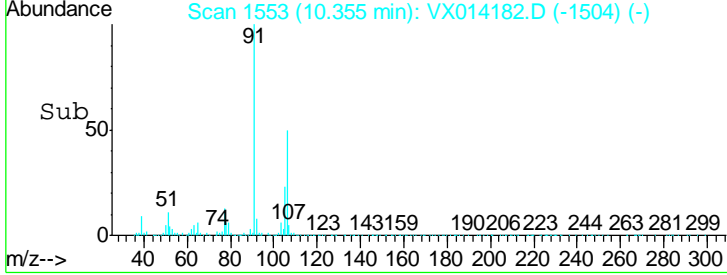
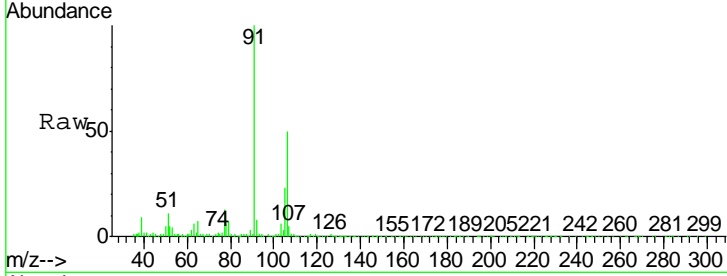
#68
 m/p-Xylenes
 Concen: 2.773 ug/l
 RT: 10.35 min Scan# 1553
 Delta R.T. 0.00 min
 Lab File: VX014182.D
 Acq: 20 Dec 2019 18:22

Instrument : MSVOA_X
 ClientSampled : MW-12DL

Tgt Ion	Ratio	Lower	Upper
106	100		
91	207.1	158.6	238.0

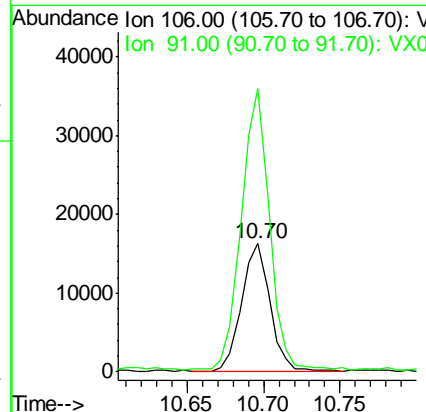
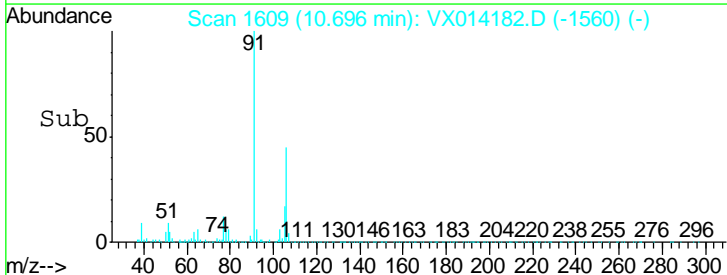
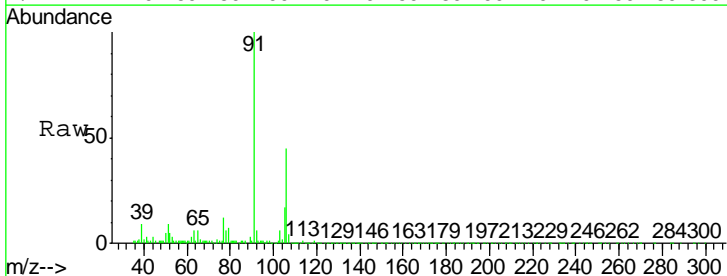
Manual Integrations
 APPROVED

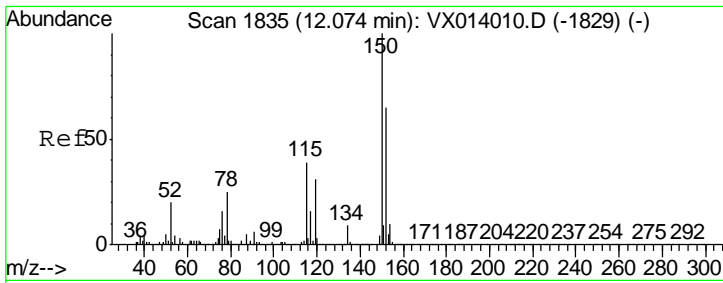
apatel
 12/23/2019 10:25:17 AM



#69
 o-Xylene
 Concen: 1.975 ug/l
 RT: 10.70 min Scan# 1609
 Delta R.T. 0.00 min
 Lab File: VX014182.D
 Acq: 20 Dec 2019 18:22

Tgt Ion	Ratio	Lower	Upper
106	100		
91	214.2	104.2	312.6





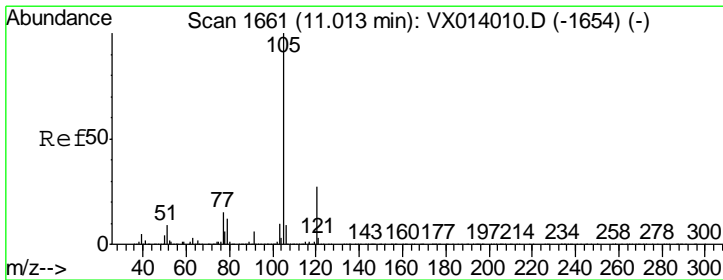
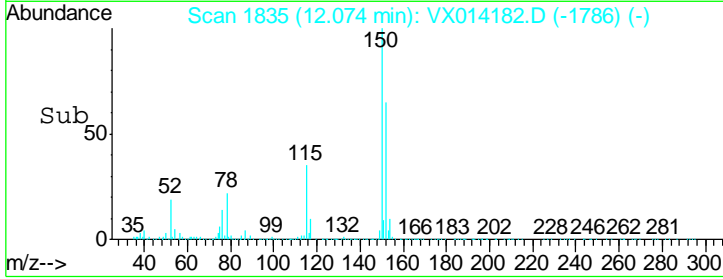
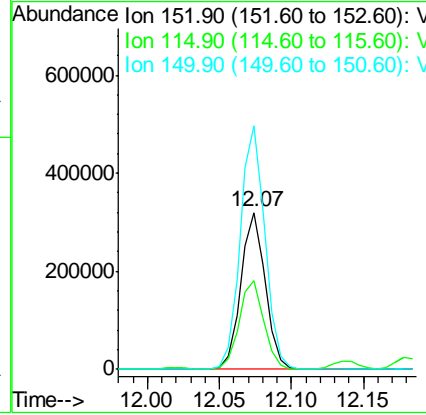
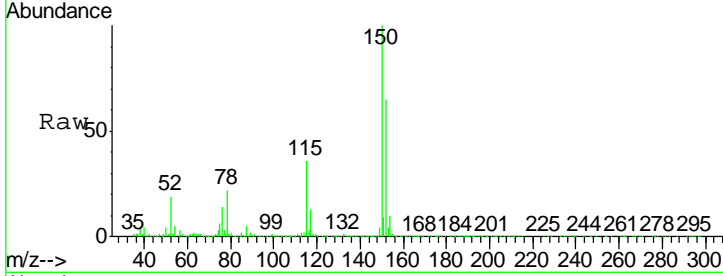
#72
 1,4-Dichlorobenzene-d4
 Concen: 50.000 ug/l
 RT: 12.07 min Scan# 1835
 Delta R.T. 0.00 min
 Lab File: VX014182.D
 Acq: 20 Dec 2019 18:22

Instrument :
 MSVOA_X
 ClientSampled :
 MW-12DL

Tgt Ion	Resp	Lower	Upper
152	100		
115	57.1	38.3	114.9
150	156.9	0.0	345.4

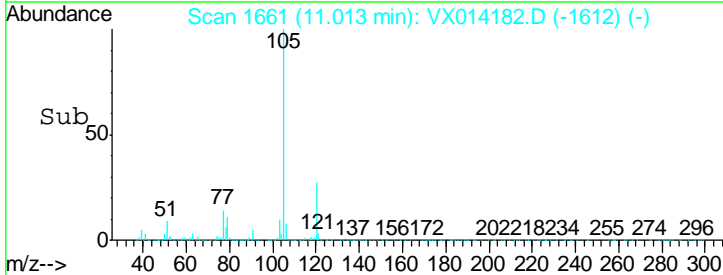
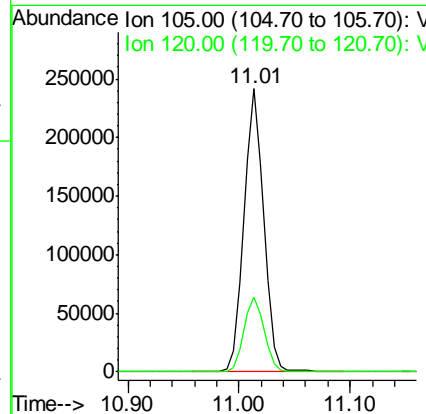
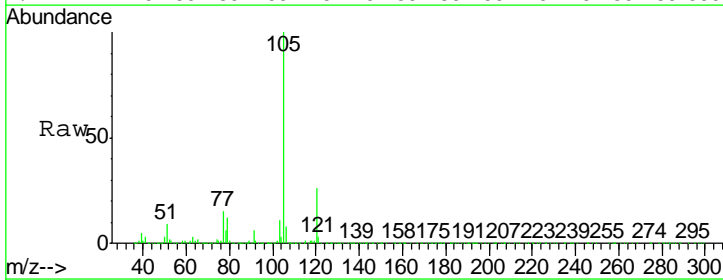
Manual Integrations
 APPROVED

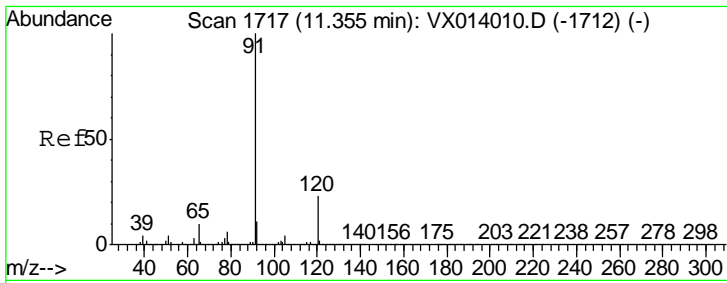
apatel
 12/23/2019 10:25:17 AM



#73
 Isopropylbenzene
 Concen: 11.104 ug/l
 RT: 11.01 min Scan# 1661
 Delta R.T. 0.00 min
 Lab File: VX014182.D
 Acq: 20 Dec 2019 18:22

Tgt Ion	Resp	Lower	Upper
105	100		
120	27.4	13.5	40.4





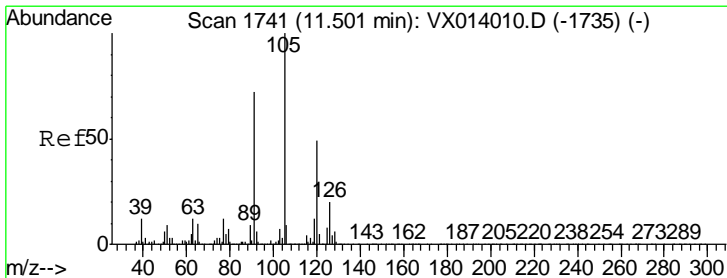
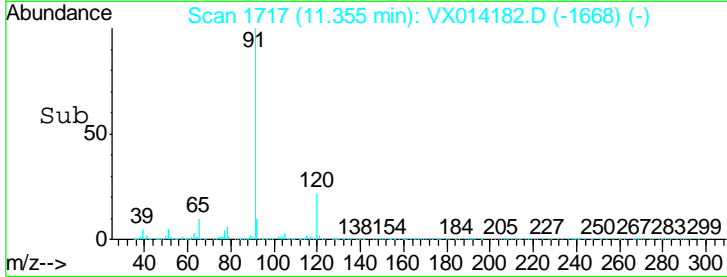
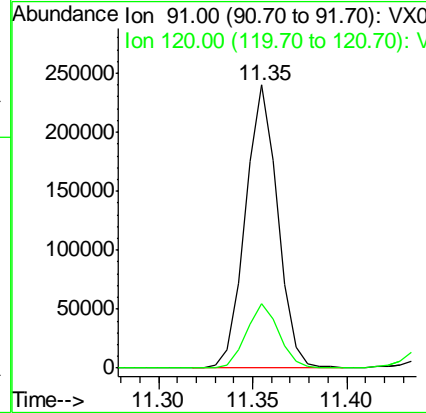
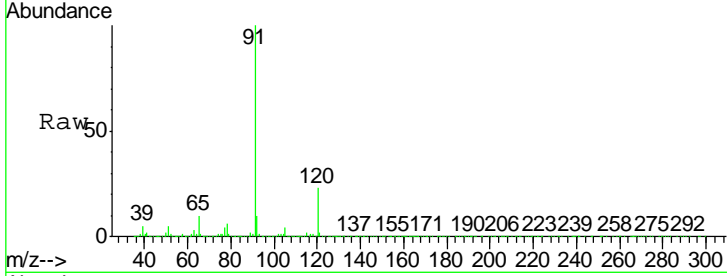
#78
 n-propylbenzene
 Concen: 9.509 ug/l
 RT: 11.35 min Scan# 1717
 Delta R.T. 0.00 min
 Lab File: VX014182.D
 Acq: 20 Dec 2019 18:22

Instrument :
 MSVOA_X
ClientSampled :
 MW-12DL

Tgt Ion	Resp	Lower	Upper
91	100		
120	22.8	11.7	35.0

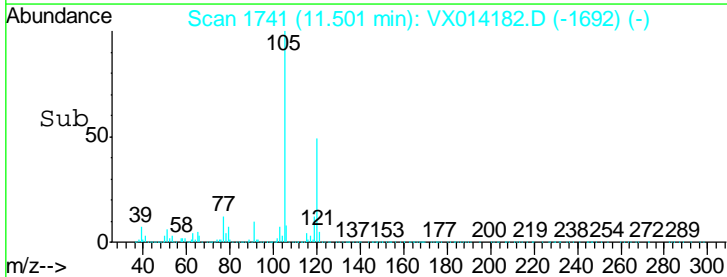
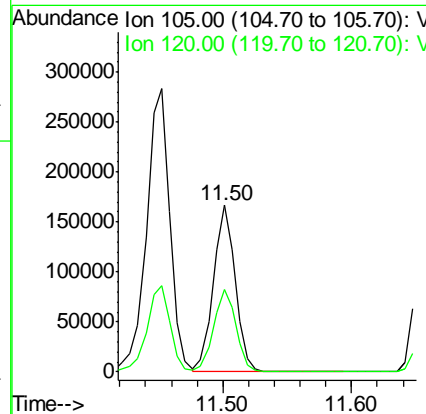
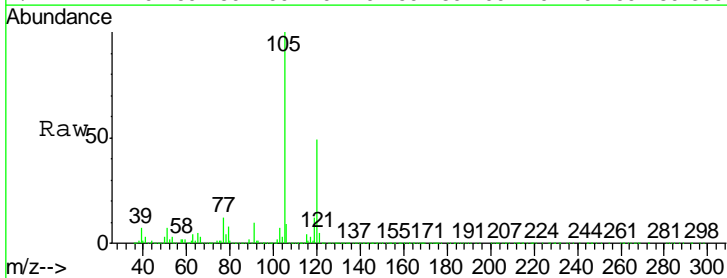
Manual Integrations
APPROVED

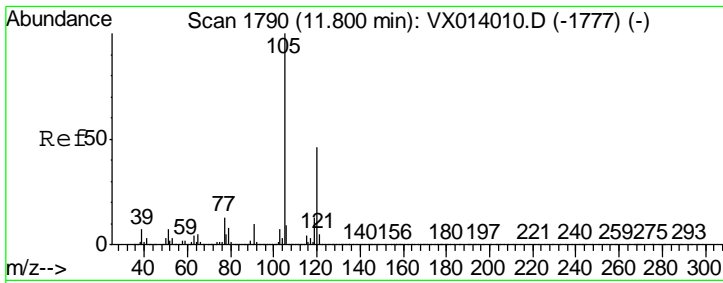
apatel
 12/23/2019 10:25:17 AM



#80
 1,3,5-Trimethylbenzene
 Concen: 8.865 ug/l
 RT: 11.50 min Scan# 1741
 Delta R.T. 0.00 min
 Lab File: VX014182.D
 Acq: 20 Dec 2019 18:22

Tgt Ion	Resp	Lower	Upper
105	100		
120	50.1	25.3	75.8



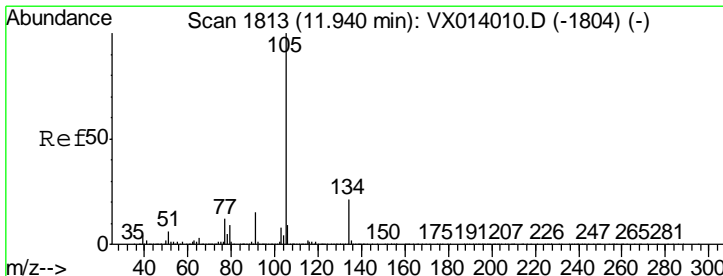
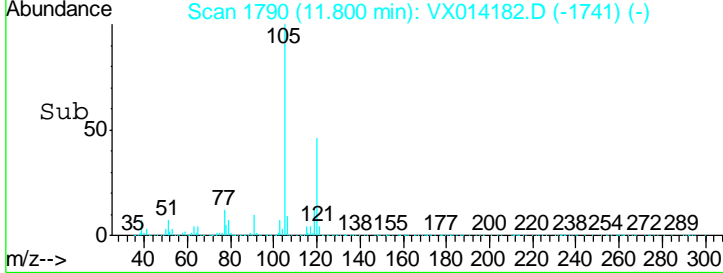
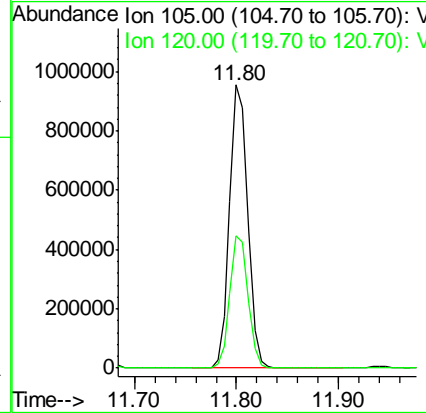
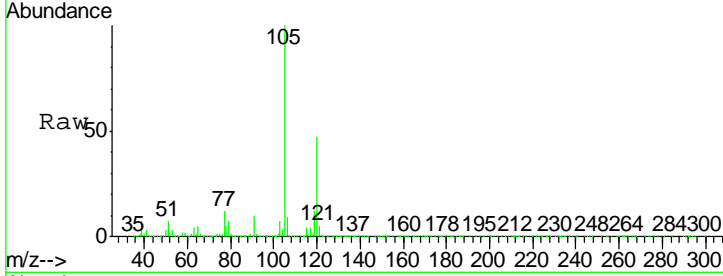


#84
 1,2,4-Trimethylbenzene
 Concen: 52.557 ug/l
 RT: 11.80 min Scan# 1790
 Delta R.T. 0.00 min
 Lab File: VX014182.D
 Acq: 20 Dec 2019 18:22

Instrument : MSVOA_X
 ClientSampled : MW-12DL

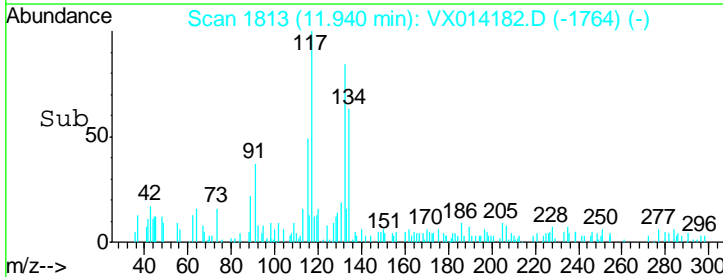
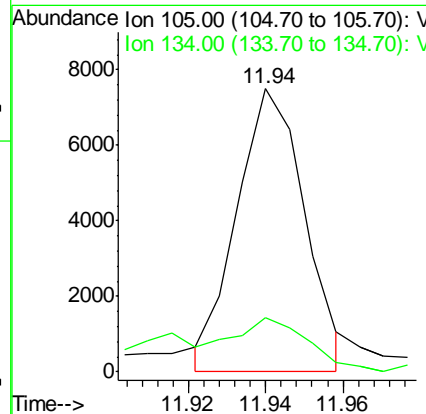
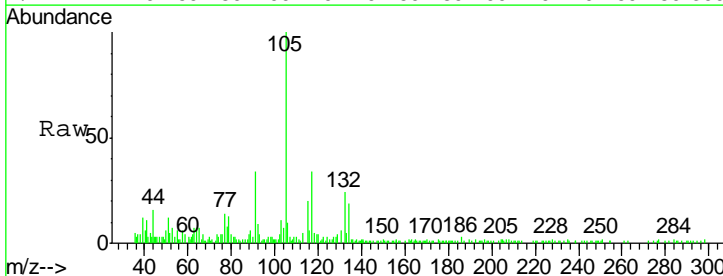
Tgt Ion:105 Resp: 1178467
 Ion Ratio Lower Upper
 105 100
 120 47.0 23.1 69.2

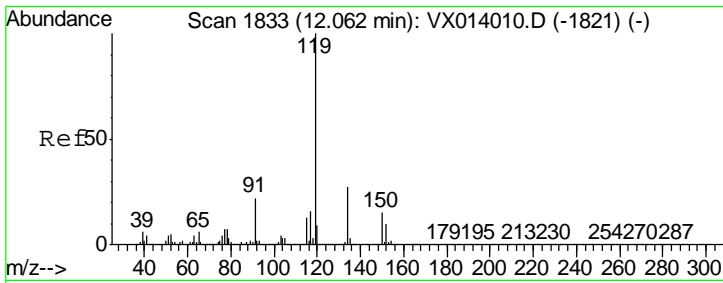
Manual Integrations
APPROVED
 apatel
 12/23/2019 10:25:17 AM



#85
 sec-Butylbenzene
 Concen: 0.357 ug/l m
 RT: 11.94 min Scan# 1813
 Delta R.T. 0.00 min
 Lab File: VX014182.D
 Acq: 20 Dec 2019 18:22

Tgt Ion:105 Resp: 9181
 Ion Ratio Lower Upper
 105 100
 134 0.0 10.4 31.1#



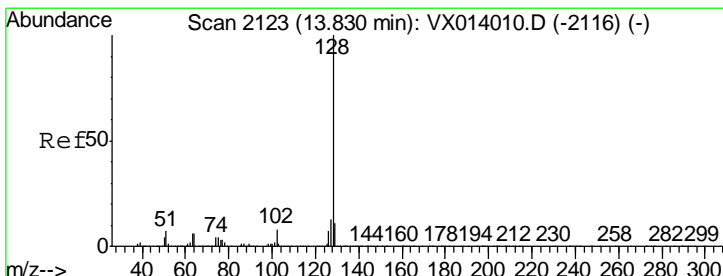
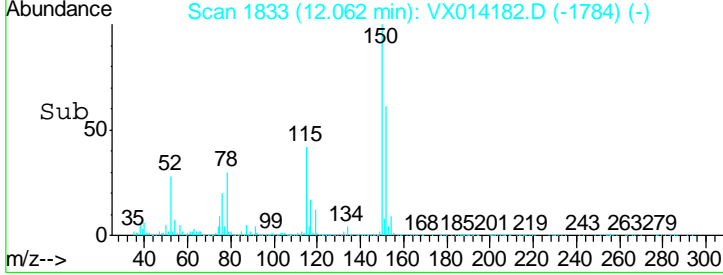
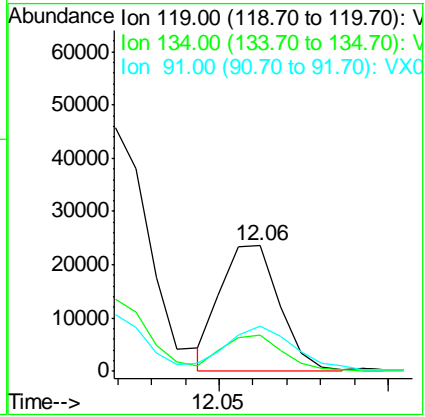
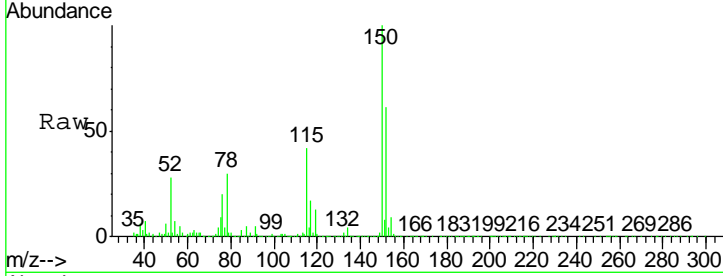


#86
 p-Isopropyltoluene
 Concen: 1.209 ug/l m
 RT: 12.06 min Scan# 1833
 Delta R.T. 0.00 min
 Lab File: VX014182.D
 Acq: 20 Dec 2019 18:22

Instrument : MSVOA_X
 ClientSampled : MW-12DL

Tgt Ion	Resp	Lower	Upper
119	28441		
134	58.0	13.4	40.1#
91	42.7	11.4	34.1#

Manual Integrations
APPROVED
 apatel
 12/23/2019 10:25:17 AM



#95
 Naphthalene
 Concen: 277.613 ug/l
 RT: 13.83 min Scan# 2123
 Delta R.T. 0.00 min
 Lab File: VX014182.D
 Acq: 20 Dec 2019 18:22

Tgt Ion	Resp	Lower	Upper
128	6846202		
127	13.4	10.2	15.4
129	11.5	8.7	13.1

