

Data Path : Z:\voasrv\HPCHEM1\MSVOA\_X\Data\VX122021\  
 Data File : VX025913.D  
 Acq On : 20 Dec 2021 13:45  
 Operator : JC/MD  
 Sample : VSTD10046  
 Misc : 5.0mL/MSVOA\_X/WATER  
 ALS Vial : 6 Sample Multiplier: 1

Instrument :  
 MSVOA\_X  
 ClientSampleId :

Quant Time: Dec 20 14:22:05 2021  
 Quant Method : Z:\voasrv\HPCHEM1\MSVOA\_X\Method\SFAMXML122021WMA.M  
 Quant Title : VOC Analysis  
 QLast Update : Mon Dec 20 14:11:27 2021  
 Response via : Initial Calibration

Compound	R.T.	QIon	Response	Conc	Units	Dev(Min)	
Internal Standards							
1) 1,4-Difluorobenzene	6.763	114	177893	50.000	ug/L	0.00	
28) Chlorobenzene-d5	10.055	117	177316	50.000	ug/L	0.00	
58) 1,4-Dichlorobenzene-d4	12.024	152	95957	50.000	ug/L	0.00	
System Monitoring Compounds							
4) Vinyl Chloride-d3	1.368	65	146497	103.729	ug/L	0.00	
7) Chloroethane-d5	1.660	69	119772	100.653	ug/L	0.00	
11) 1,1-Dichloroethene-d2	2.306	63	255914	105.556	ug/L	0.00	
21) 2-Butanone-d5	4.458	46	201749	193.898	ug/L	0.00	
24) Chloroform-d	5.062	84	272670	98.971	ug/L	0.00	
26) 1,2-Dichloroethane-d4	5.958	65	171414	92.784	ug/L	0.00	
32) Benzene-d6	5.976	84	539299	100.821	ug/L	0.00	
36) 1,2-Dichloropropane-d6	7.312	67	163596	99.837	ug/L	0.00	
41) Toluene-d8	8.653	98	516828	102.739	ug/L	0.00	
43) trans-1,3-Dichloroprop...	8.952	79	78019	116.887	ug/L	0.00	
47) 2-Hexanone-d5	9.384	63	154068	222.555	ug/L	0.00	
56) 1,1,2,2-Tetrachloroeth...	11.195	84	236128	103.522	ug/L	0.00	
66) 1,2-Dichlorobenzene-d4	12.323	152	200336	98.580	ug/L	0.00	
Target Compounds							
2) Dichlorodifluoromethane	1.166	85	160634	111.884	ug/L	100	
3) Chloromethane	1.294	50	151902	96.020	ug/L	98	
5) Vinyl chloride	1.374	62	162864	104.806	ug/L	99	
6) Bromomethane	1.599	94	107263	90.217	ug/L	97	
8) Chloroethane	1.685	64	103536	97.804	ug/L	98	
9) Trichlorofluoromethane	1.886	101	246416	108.928	ug/L	99	
10) 1,1,2-Trichloro-1,2,2-...	2.331	101	119828	109.791	ug/L	89	
12) 1,1-Dichloroethene	2.319	96	111704	104.678	ug/L	77	
13) Acetone	2.380	43	152820	178.988	ug/L	95	
14) Carbon disulfide	2.514	76	338528	110.620	ug/L	100	
15) Methyl Acetate	2.703	43	141074	92.823	ug/L	90	#
16) Methylene chloride	2.794	84	132957	91.401	ug/L	97	
17) trans-1,2-Dichloroethene	3.093	96	127828	98.867	ug/L	94	
18) Methyl tert-butyl Ether	3.117	73	402215	95.564	ug/L	98	
19) 1,1-Dichloroethane	3.611	63	231803	99.159	ug/L	99	
20) cis-1,2-Dichloroethene	4.489	96	145890	99.249	ug/L	94	
22) 2-Butanone	4.556	43	222561	187.599	ug/L	97	
23) Bromochloromethane	4.903	128	74233	111.633	ug/L	90	
25) Chloroform	5.099	83	248569	95.788	ug/L	98	
27) 1,2-Dichloroethane	6.092	62	197130	93.884	ug/L	98	
29) Cyclohexane	5.477	56	221868	115.545	ug/L	97	
30) 1,1,1-Trichloroethane	5.391	97	218921	104.668	ug/L	98	
31) Carbon tetrachloride	5.678	117	195703	128.130	ug/L	99	
33) Benzene	6.044	78	548928	99.753	ug/L	100	
34) Trichloroethene	7.129	95	143884	101.409	ug/L	96	
35) Methylcyclohexane	7.385	83	232502	123.455	ug/L	98	
37) 1,2-Dichloropropane	7.434	63	135936	99.650	ug/L	99	
38) Bromodichloromethane	7.824	83	187164	103.237	ug/L	99	
39) cis-1,3-Dichloropropene	8.366	75	215764	114.280	ug/L	98	
40) 4-Methyl-2-pentanone	8.574	43	416649	201.949	ug/L	97	
42) Toluene	8.720	91	605686	103.251	ug/L	100	
44) trans-1,3-Dichloropropene	8.982	75	207150	119.713	ug/L	98	

Data Path : Z:\voasrv\HPCHEM1\MSVOA\_X\Data\VX122021\  
 Data File : VX025913.D  
 Acq On : 20 Dec 2021 13:45  
 Operator : JC/MD  
 Sample : VSTD10046  
 Misc : 5.0mL/MSVOA\_X/WATER  
 ALS Vial : 6 Sample Multiplier: 1

Instrument :  
 MSVOA\_X  
 ClientSampleId :

Quant Time: Dec 20 14:22:05 2021  
 Quant Method : Z:\voasrv\HPCHEM1\MSVOA\_X\Method\SFAMXLM122021WMA.M  
 Quant Title : VOC Analysis  
 QLast Update : Mon Dec 20 14:11:27 2021  
 Response via : Initial Calibration

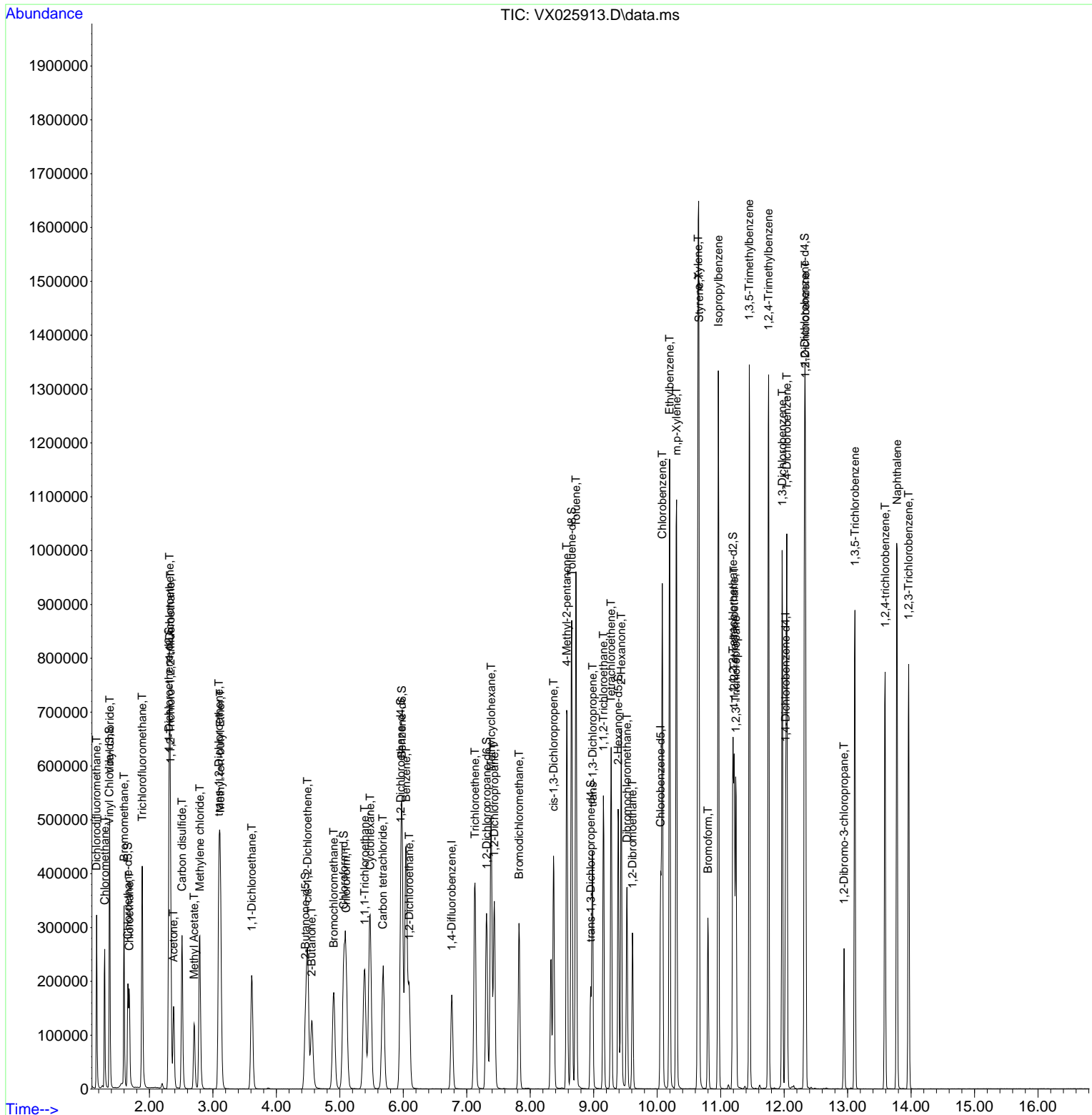
Compound	R.T.	QIon	Response	Conc	Units	Dev(Min)
45) 1,1,2-Trichloroethane	9.153	97	139634	97.809	ug/L	98
46) Tetrachloroethene	9.275	164	114409	108.893	ug/L	98
48) 2-Hexanone	9.433	43	340354	202.620	ug/L	98
49) Dibromochloromethane	9.525	129	154065	108.892	ug/L	97
50) 1,2-Dibromoethane	9.610	107	151076	101.827	ug/L	98
51) Chlorobenzene	10.079	112	388861	101.057	ug/L	98
52) Ethylbenzene	10.195	91	661633	106.864	ug/L	97
53) m,p-Xylene	10.305	106	264876	108.329	ug/L	98
54) o-Xylene	10.646	106	259102	108.824	ug/L	97
55) Styrene	10.659	104	441911	112.335	ug/L	96
57) 1,1,2,2-Tetrachloroethane	11.213	83	219252	98.718	ug/L	98
59) Bromoform	10.799	173	109721	110.596	ug/L	99
60) Isopropylbenzene	10.963	105	678306	102.786	ug/L	98
61) 1,2,3-Trichloropropane	11.238	75	176683	88.132	ug/L	99
62) 1,3,5-Trimethylbenzene	11.451	105	576363	104.143	ug/L	97
63) 1,2,4-Trimethylbenzene	11.756	105	579776	104.115	ug/L #	80
64) 1,3-Dichlorobenzene	11.969	146	311083	101.437	ug/L	98
65) 1,4-Dichlorobenzene	12.042	146	308070	99.257	ug/L	99
67) 1,2-Dichlorobenzene	12.335	146	303680	97.650	ug/L	98
68) 1,2-Dibromo-3-chloropr...	12.945	75	44416	102.919	ug/L	89
69) 1,3,5-Trichlorobenzene	13.115	180	208777	109.442	ug/L	99
70) 1,2,4-trichlorobenzene	13.591	180	180301	121.797	ug/L	96
71) Naphthalene	13.780	128	641618	130.435	ug/L	100
72) 1,2,3-Trichlorobenzene	13.963	180	182116	123.462	ug/L	98

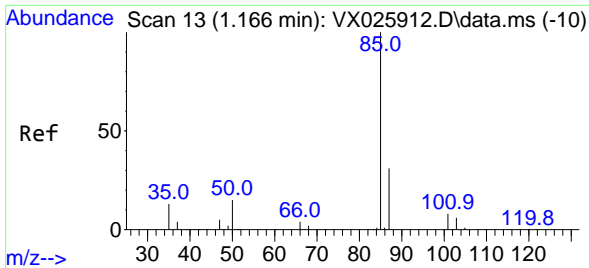
(#) = qualifier out of range (m) = manual integration (+) = signals summed

Data Path : Z:\voasrv\HPCHEM1\MSVOA\_X\Data\VX122021\  
 Data File : VX025913.D  
 Acq On : 20 Dec 2021 13:45  
 Operator : JC/MD  
 Sample : VSTD10046  
 Misc : 5.0mL/MSVOA\_X/WATER  
 ALS Vial : 6 Sample Multiplier: 1

Instrument :  
 MSVOA\_X  
 ClientSampleId :

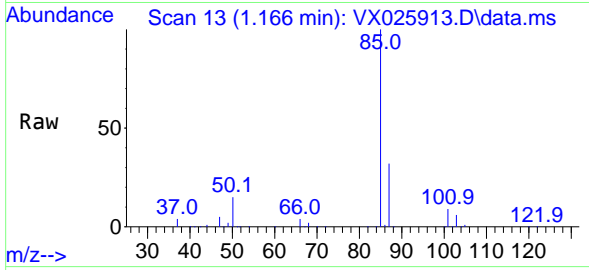
Quant Time: Dec 20 14:22:05 2021  
 Quant Method : Z:\voasrv\HPCHEM1\MSVOA\_X\Method\SFAMXLM122021WMA.M  
 Quant Title : VOC Analysis  
 QLast Update : Mon Dec 20 14:11:27 2021  
 Response via : Initial Calibration



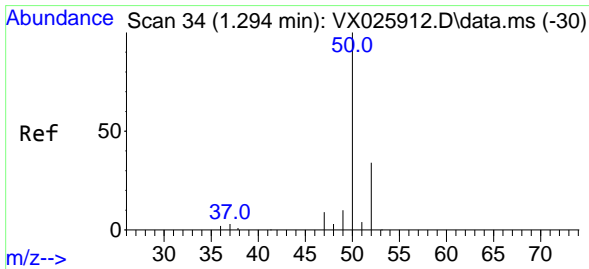
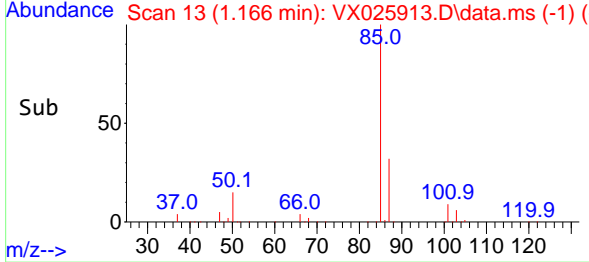
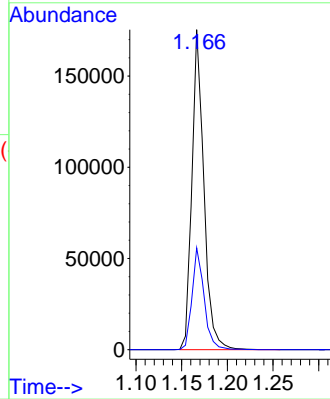


#2  
 Dichlorodifluoromethane  
 Concen: 111.884 ug/L  
 RT: 1.166 min Scan# 11  
 Delta R.T. -0.000 min  
 Lab File: VX025913.D  
 Acq: 20 Dec 2021 13:45

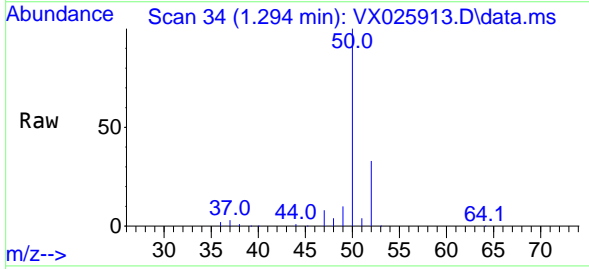
Instrument : MSVOA\_X  
 ClientSampleId :



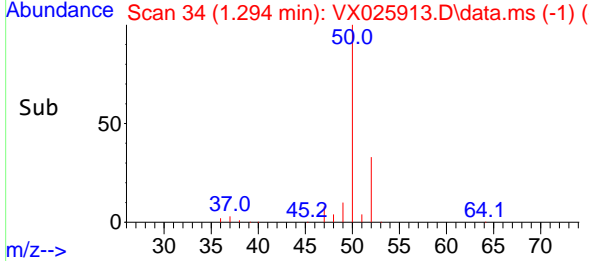
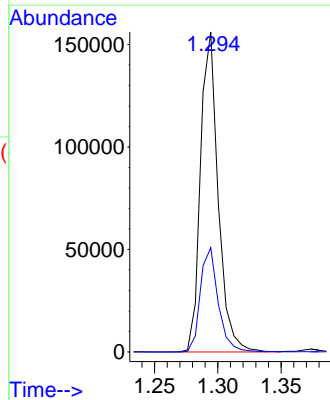
Tgt Ion: 85 Resp: 160634  
 Ion Ratio Lower Upper  
 85 100  
 87 32.2 25.8 38.6

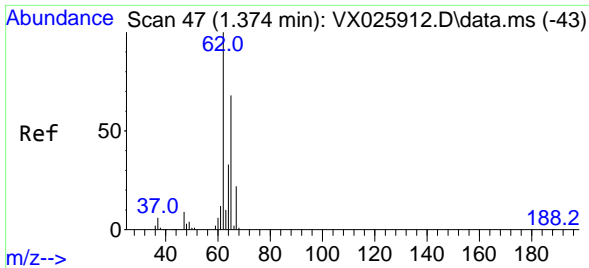


#3  
 Chloromethane  
 Concen: 96.020 ug/L  
 RT: 1.294 min Scan# 34  
 Delta R.T. -0.000 min  
 Lab File: VX025913.D  
 Acq: 20 Dec 2021 13:45



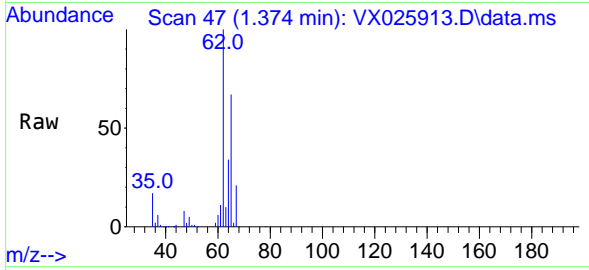
Tgt Ion: 50 Resp: 151902  
 Ion Ratio Lower Upper  
 50 100  
 52 32.6 22.0 40.8



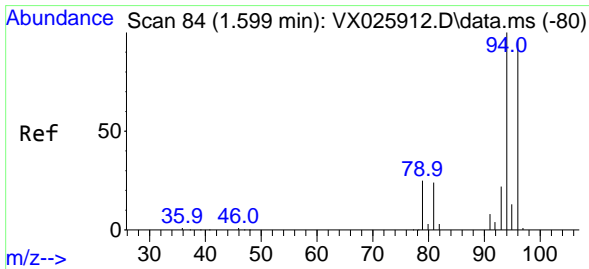
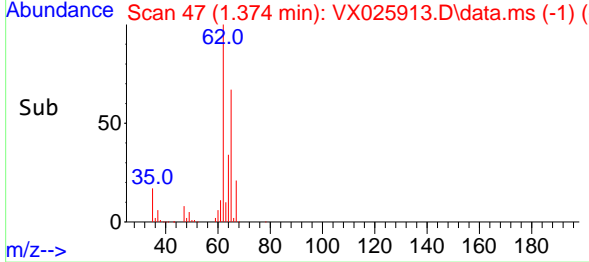
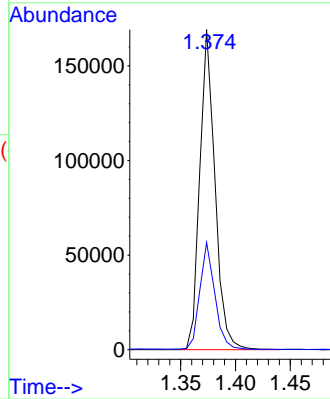


#5  
 Vinyl chloride  
 Concen: 104.806 ug/L  
 RT: 1.374 min Scan# 41  
 Delta R.T. -0.000 min  
 Lab File: VX025913.D  
 Acq: 20 Dec 2021 13:45

Instrument :  
 MSVOA\_X  
 ClientSampleId :

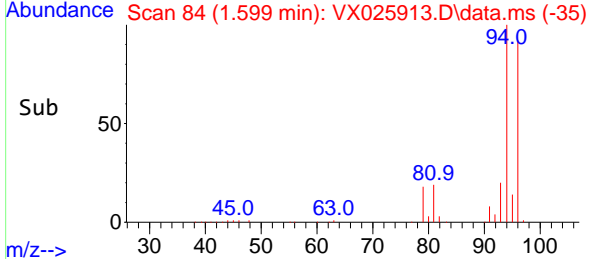
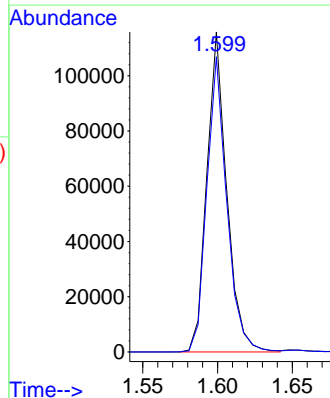
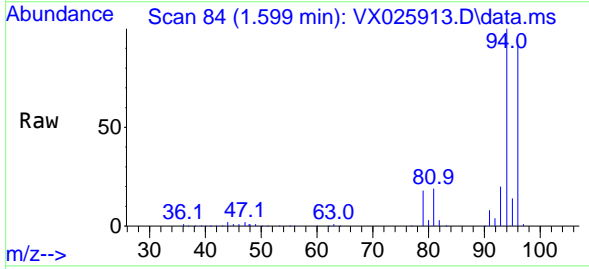


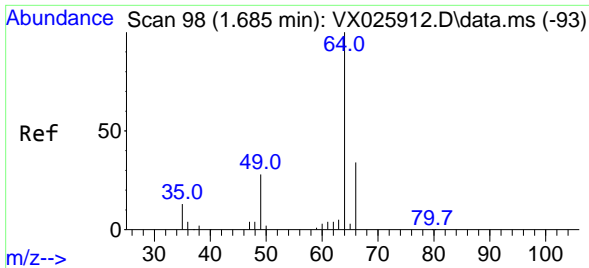
Tgt Ion: 62 Resp: 162864  
 Ion Ratio Lower Upper  
 62 100  
 64 33.5 22.9 42.5



#6  
 Bromomethane  
 Concen: 90.217 ug/L  
 RT: 1.599 min Scan# 84  
 Delta R.T. -0.000 min  
 Lab File: VX025913.D  
 Acq: 20 Dec 2021 13:45

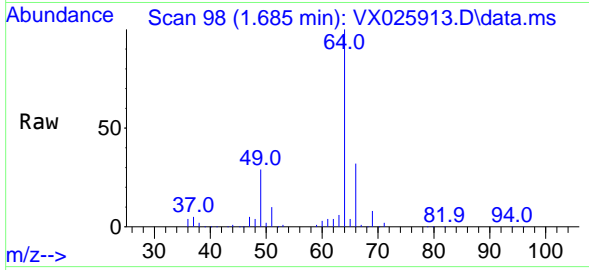
Tgt Ion: 94 Resp: 107263  
 Ion Ratio Lower Upper  
 94 100  
 96 92.2 66.7 123.9



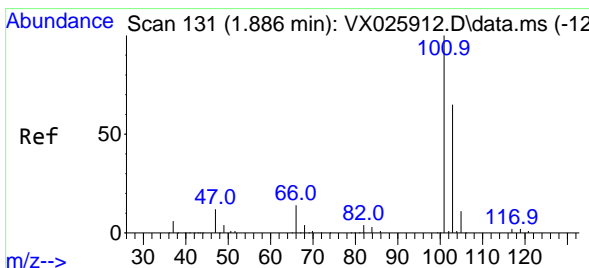
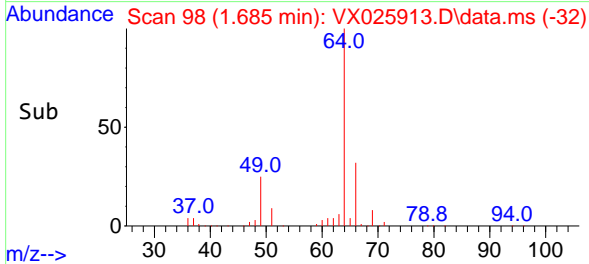
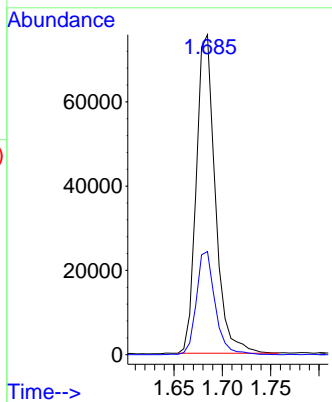


#8  
 Chloroethane  
 Concen: 97.804 ug/L  
 RT: 1.685 min Scan# 98  
 Delta R.T. -0.000 min  
 Lab File: VX025913.D  
 Acq: 20 Dec 2021 13:45

Instrument : MSVOA\_X  
 ClientSampleId :

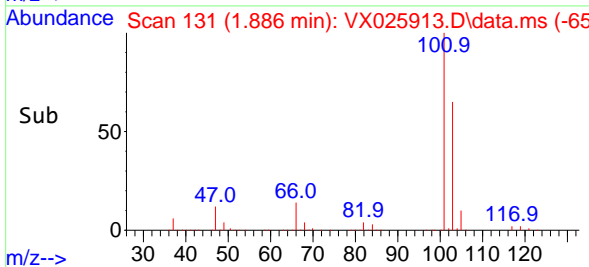
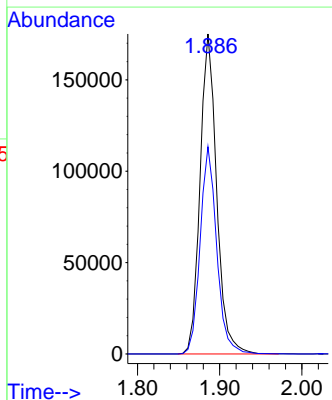
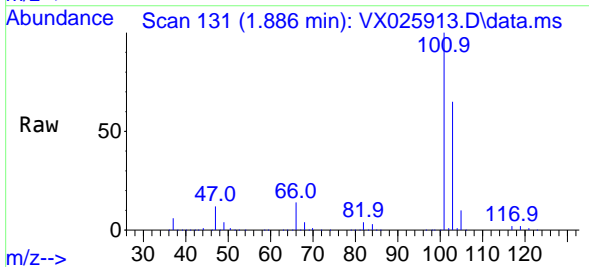


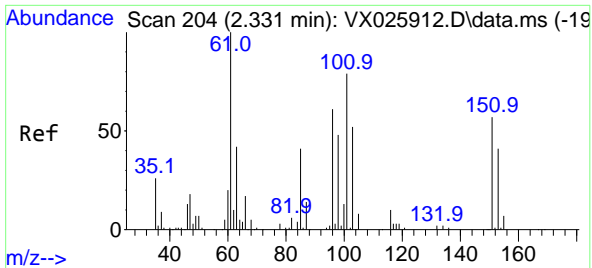
Tgt Ion: 64 Resp: 103536  
 Ion Ratio Lower Upper  
 64 100  
 66 32.3 22.0 40.8



#9  
 Trichlorofluoromethane  
 Concen: 108.928 ug/L  
 RT: 1.886 min Scan# 131  
 Delta R.T. -0.000 min  
 Lab File: VX025913.D  
 Acq: 20 Dec 2021 13:45

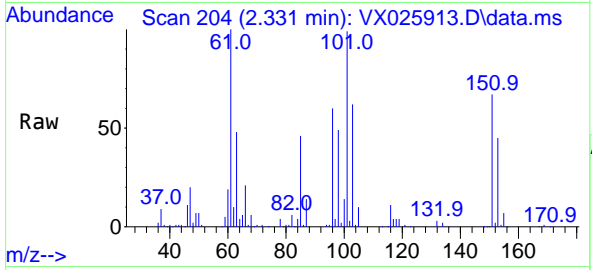
Tgt Ion: 101 Resp: 246416  
 Ion Ratio Lower Upper  
 101 100  
 103 64.7 52.2 78.2



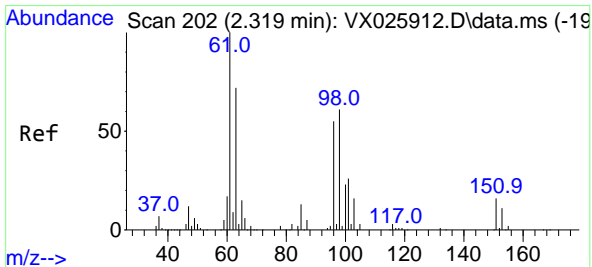
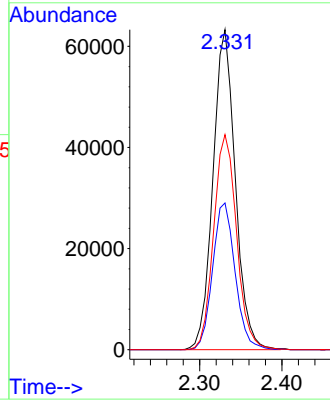
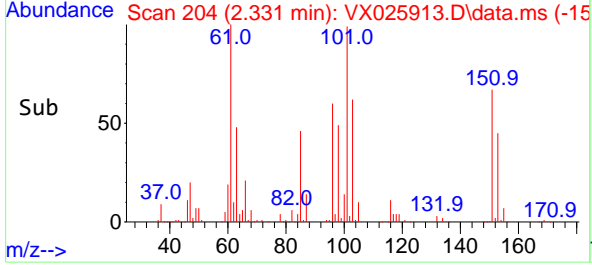


#10  
 1,1,2-Trichloro-1,2,2-trifluoroethane  
 Concen: 109.791 ug/L  
 RT: 2.331 min Scan# 204  
 Delta R.T. -0.000 min  
 Lab File: VX025913.D  
 Acq: 20 Dec 2021 13:45

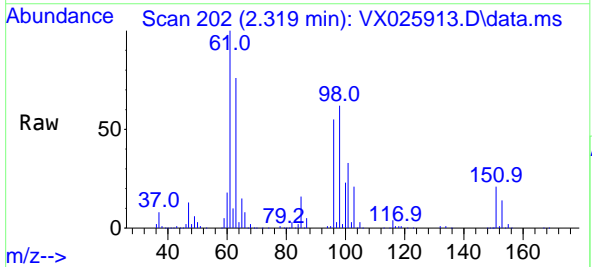
Instrument : MSVOA\_X  
 ClientSampleId :



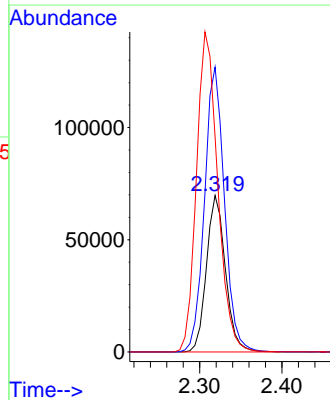
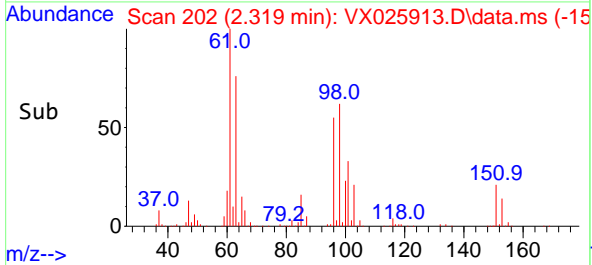
Tgt Ion:101 Resp: 119828  
 Ion Ratio Lower Upper  
 101 100  
 85 46.1 34.3 51.5  
 151 68.9 65.2 97.8

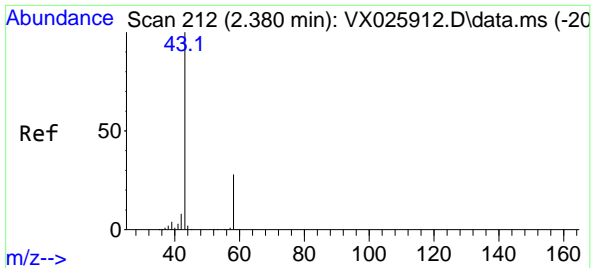


#12  
 1,1-Dichloroethene  
 Concen: 104.678 ug/L  
 RT: 2.319 min Scan# 202  
 Delta R.T. -0.000 min  
 Lab File: VX025913.D  
 Acq: 20 Dec 2021 13:45



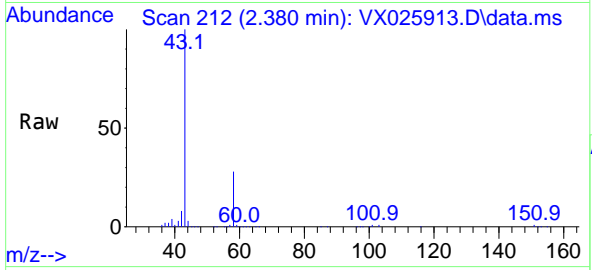
Tgt Ion: 96 Resp: 111704  
 Ion Ratio Lower Upper  
 96 100  
 61 182.1 108.7 201.9  
 63 137.5 76.3 141.7



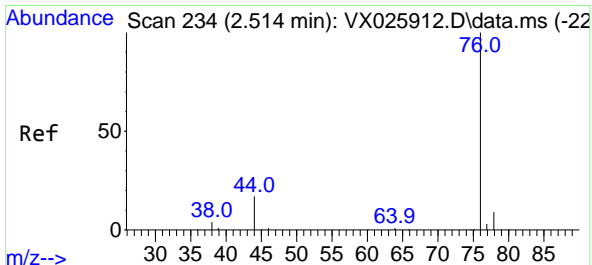
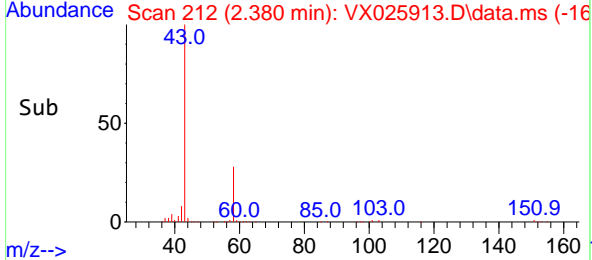
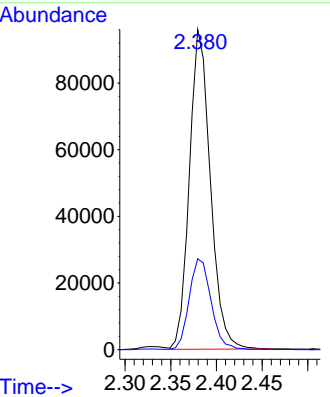


#13  
 Acetone  
 Concen: 178.988 ug/L  
 RT: 2.380 min Scan# 212  
 Delta R.T. -0.000 min  
 Lab File: VX025913.D  
 Acq: 20 Dec 2021 13:45

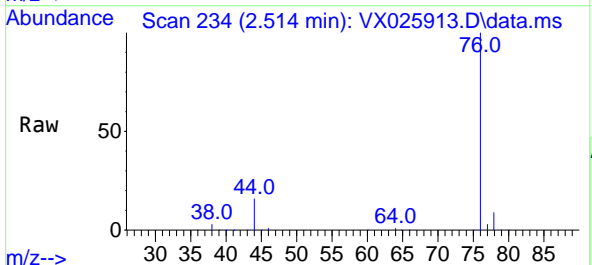
Instrument : MSVOA\_X  
 ClientSampleId :



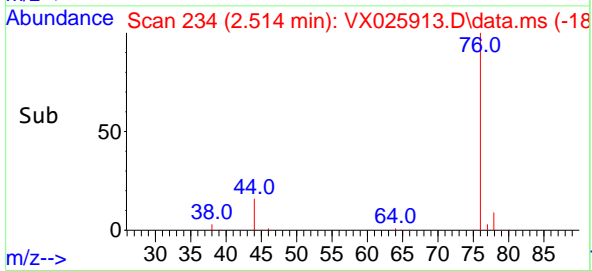
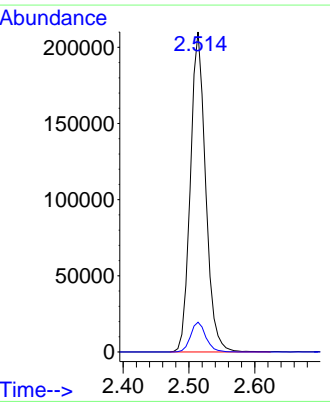
Tgt Ion: 43 Resp: 152820  
 Ion Ratio Lower Upper  
 43 100  
 58 29.8 0.0 65.6



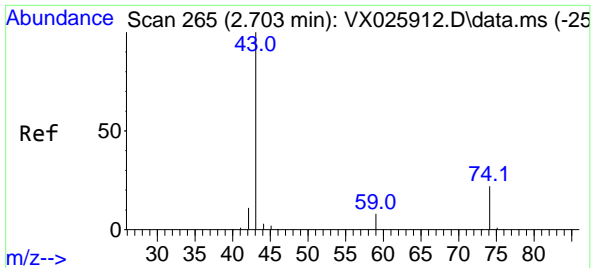
#14  
 Carbon disulfide  
 Concen: 110.620 ug/L  
 RT: 2.514 min Scan# 234  
 Delta R.T. -0.000 min  
 Lab File: VX025913.D  
 Acq: 20 Dec 2021 13:45



Tgt Ion: 76 Resp: 338528  
 Ion Ratio Lower Upper  
 76 100  
 78 9.3 7.4 11.2

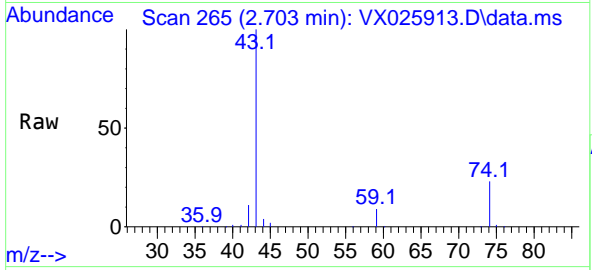




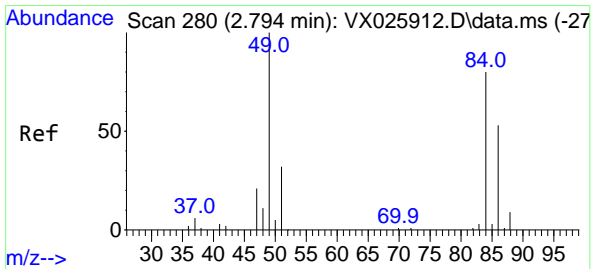
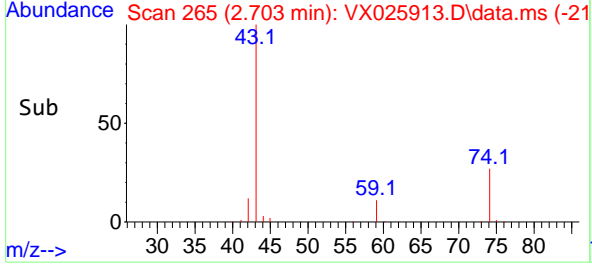
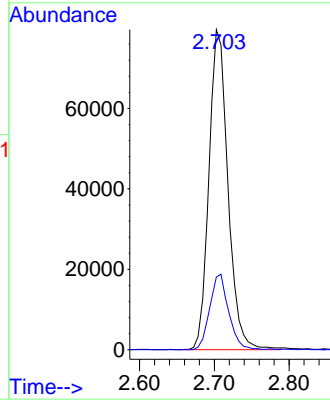


#15  
Methyl Acetate  
Concen: 92.823 ug/L  
RT: 2.703 min Scan# 20  
Delta R.T. -0.000 min  
Lab File: VX025913.D  
Acq: 20 Dec 2021 13:45

Instrument : MSVOA\_X  
ClientSampleId :

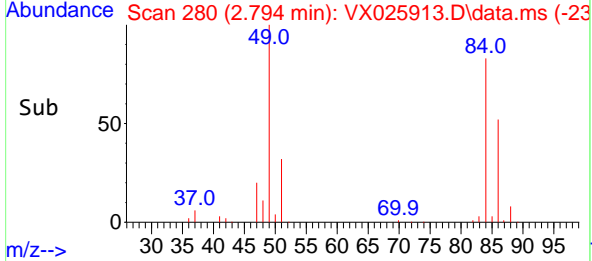
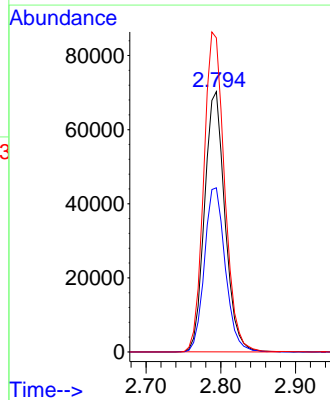
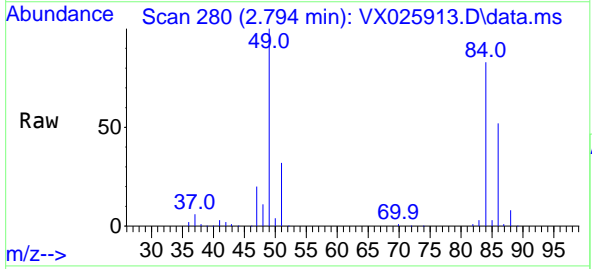


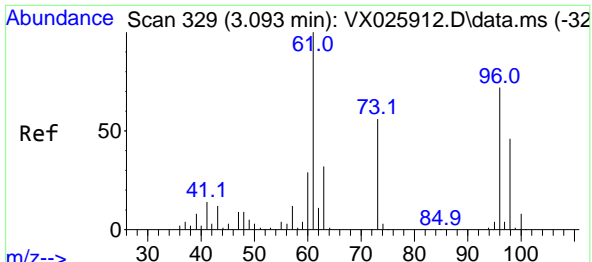
Tgt Ion: 43 Resp: 141074  
Ion Ratio Lower Upper  
43 100  
74 23.3 0.1 0.1#



#16  
Methylene chloride  
Concen: 91.401 ug/L  
RT: 2.794 min Scan# 280  
Delta R.T. -0.000 min  
Lab File: VX025913.D  
Acq: 20 Dec 2021 13:45

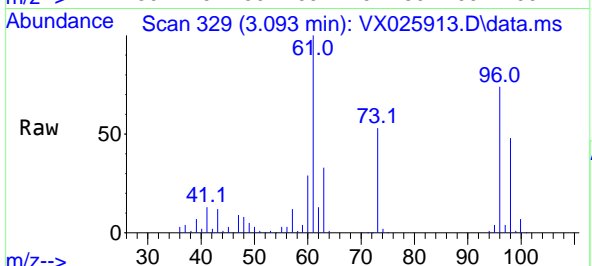
Tgt Ion: 84 Resp: 132957  
Ion Ratio Lower Upper  
84 100  
86 63.0 45.1 83.9  
49 120.6 82.3 152.8





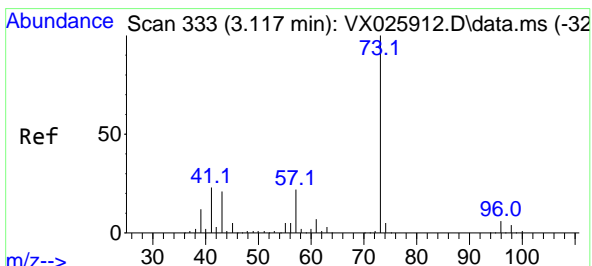
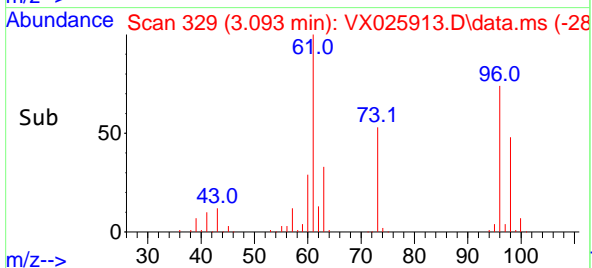
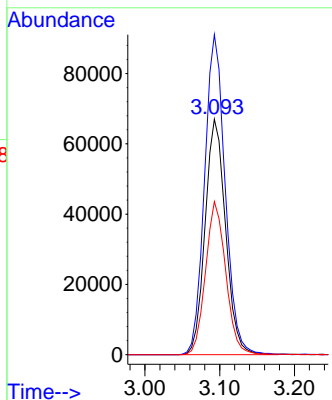
#17  
 trans-1,2-Dichloroethene  
 Concen: 98.867 ug/L  
 RT: 3.093 min Scan# 317  
 Delta R.T. -0.000 min  
 Lab File: VX025913.D  
 Acq: 20 Dec 2021 13:45

Instrument : MSVOA\_X  
 ClientSampleId :



Tgt Ion: 96 Resp: 127828

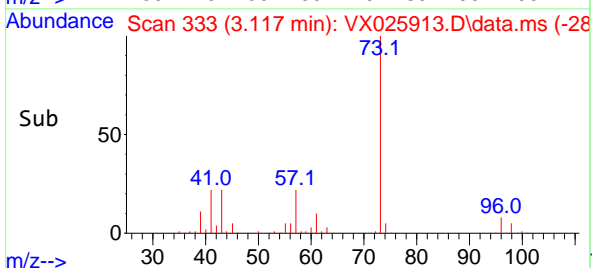
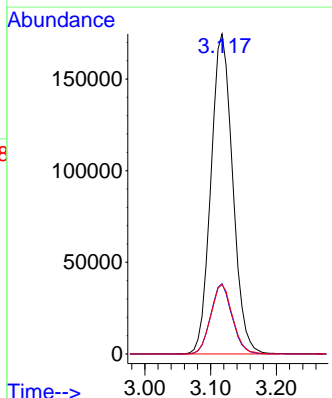
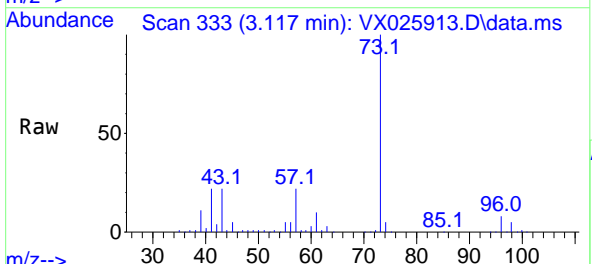
Ion	Ratio	Lower	Upper
96	100		
61	135.9	88.5	164.4
98	65.0	44.3	82.3

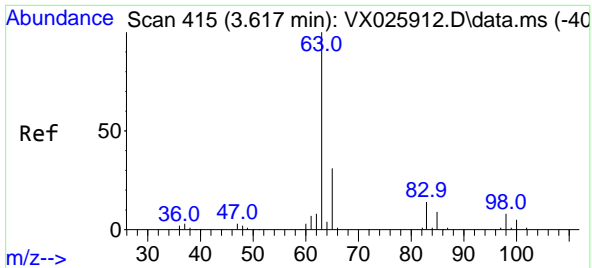


#18  
 Methyl tert-butyl Ether  
 Concen: 95.564 ug/L  
 RT: 3.117 min Scan# 333  
 Delta R.T. -0.000 min  
 Lab File: VX025913.D  
 Acq: 20 Dec 2021 13:45

Tgt Ion: 73 Resp: 402215

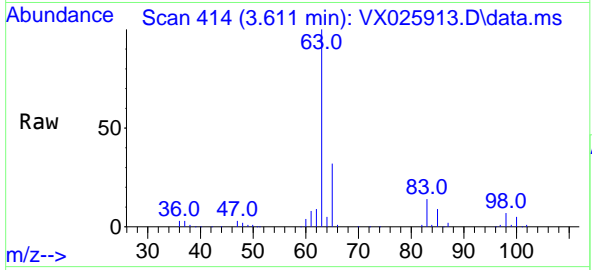
Ion	Ratio	Lower	Upper
73	100		
43	21.5	15.7	23.5
57	21.6	17.3	25.9



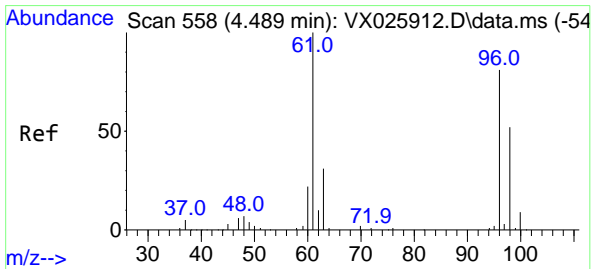
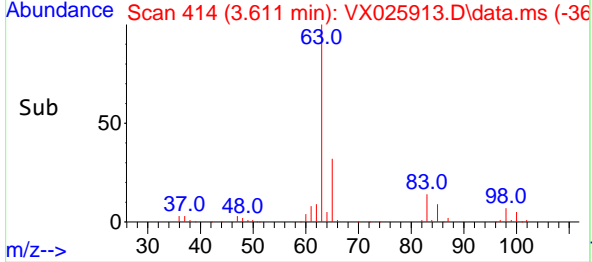
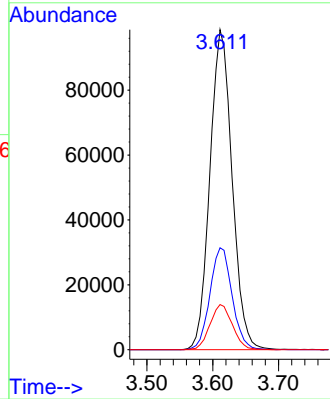


#19  
 1,1-Dichloroethane  
 Concen: 99.159 ug/L  
 RT: 3.611 min Scan# 415  
 Delta R.T. -0.006 min  
 Lab File: VX025913.D  
 Acq: 20 Dec 2021 13:45

Instrument :  
 MSVOA\_X  
 ClientSampleId :

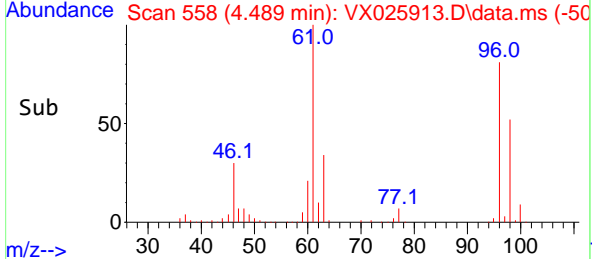
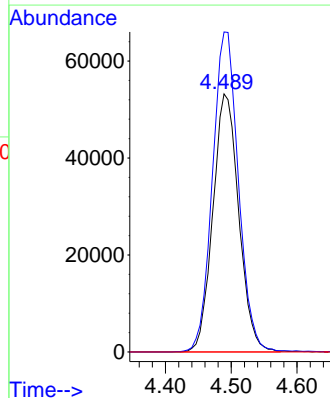
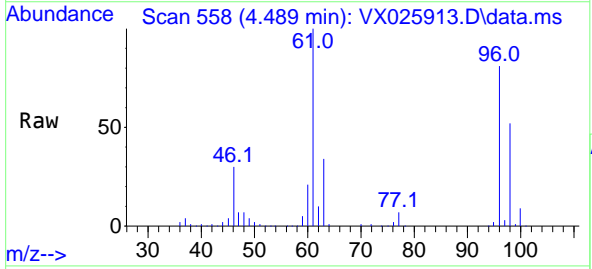


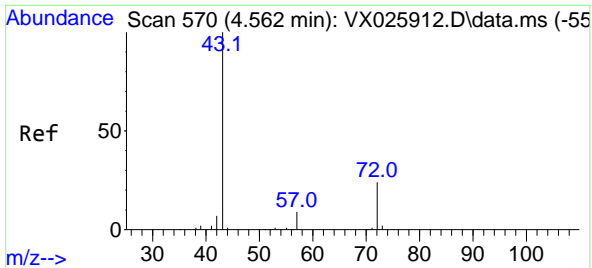
Tgt Ion: 63 Resp: 231803  
 Ion Ratio Lower Upper  
 63 100  
 65 31.9 22.2 41.2  
 83 14.1 10.2 19.0



#20  
 cis-1,2-Dichloroethene  
 Concen: 99.249 ug/L  
 RT: 4.489 min Scan# 558  
 Delta R.T. -0.000 min  
 Lab File: VX025913.D  
 Acq: 20 Dec 2021 13:45

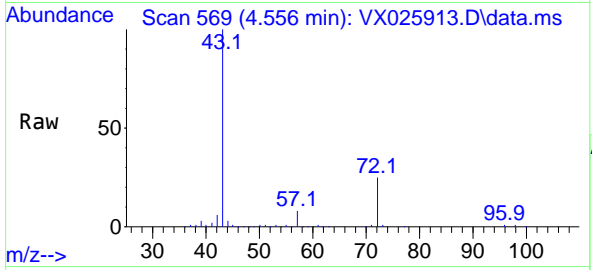
Tgt Ion: 96 Resp: 145890  
 Ion Ratio Lower Upper  
 96 100  
 61 124.0 82.3 152.8  
 68 0.0 0.0 0.0



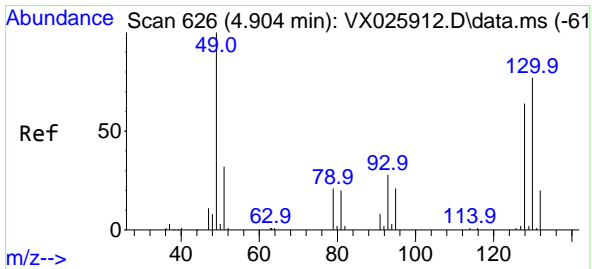
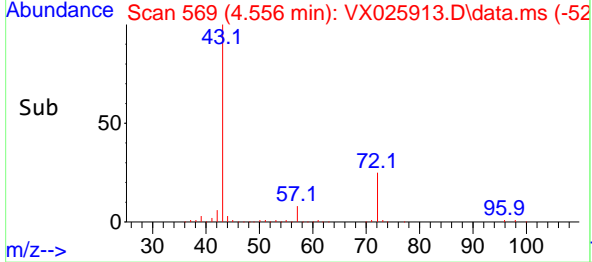
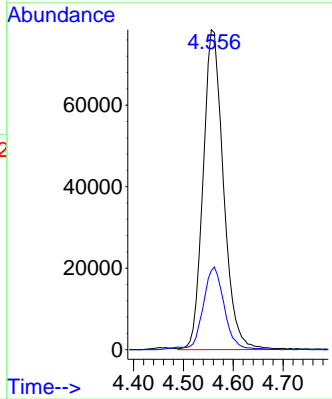


#22  
 2-Butanone  
 Concen: 187.599 ug/L  
 RT: 4.556 min Scan# 570  
 Delta R.T. -0.006 min  
 Lab File: VX025913.D  
 Acq: 20 Dec 2021 13:45

Instrument : MSVOA\_X  
 ClientSampleId :

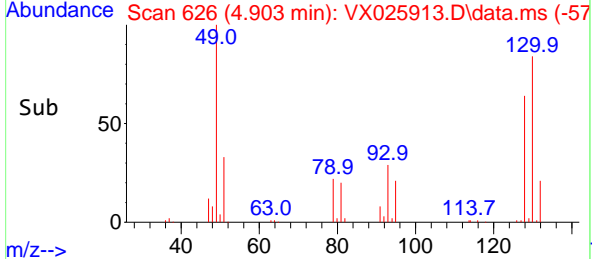
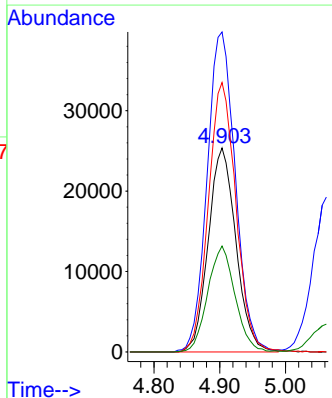
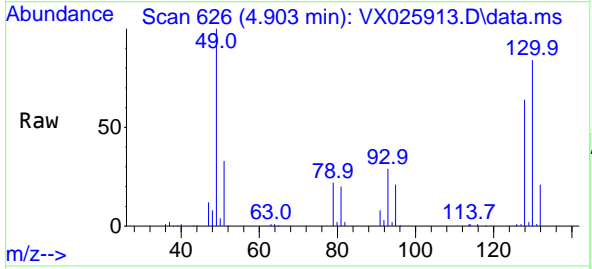


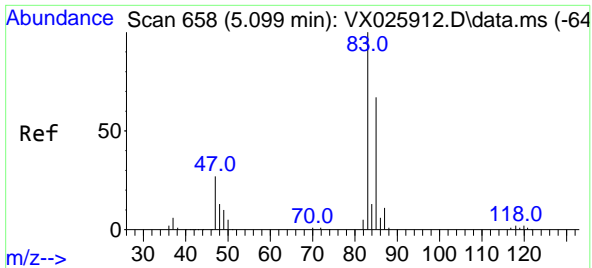
Tgt Ion: 43 Resp: 222561  
 Ion Ratio Lower Upper  
 43 100  
 72 26.1 13.8 41.3



#23  
 Bromochloromethane  
 Concen: 111.633 ug/L  
 RT: 4.903 min Scan# 626  
 Delta R.T. -0.000 min  
 Lab File: VX025913.D  
 Acq: 20 Dec 2021 13:45

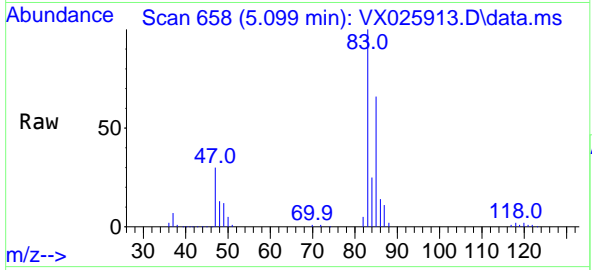
Tgt Ion:128 Resp: 74233  
 Ion Ratio Lower Upper  
 128 100  
 49 156.8 97.7 181.5  
 130 132.0 88.2 163.8  
 51 51.9 36.0 54.0



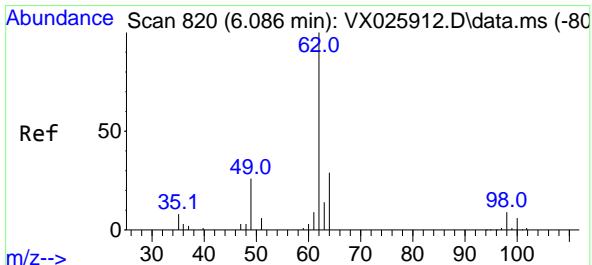
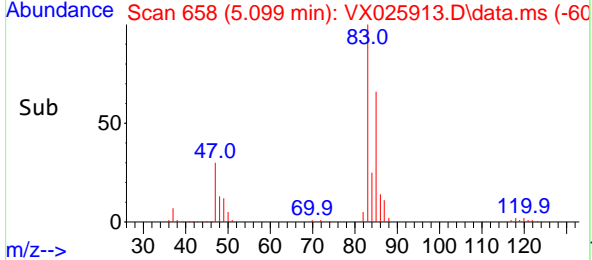
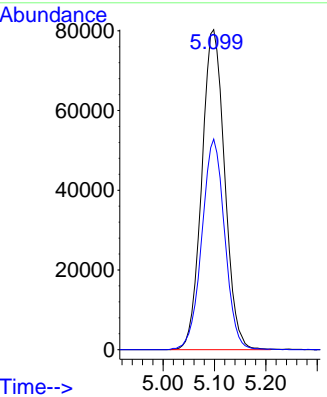


#25  
 Chloroform  
 Concen: 95.788 ug/L  
 RT: 5.099 min Scan# 61  
 Delta R.T. -0.000 min  
 Lab File: VX025913.D  
 Acq: 20 Dec 2021 13:45

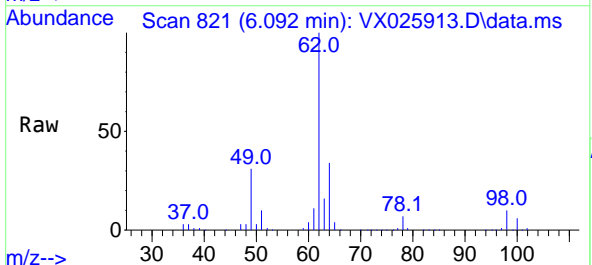
Instrument : MSVOA\_X  
 ClientSampleId :



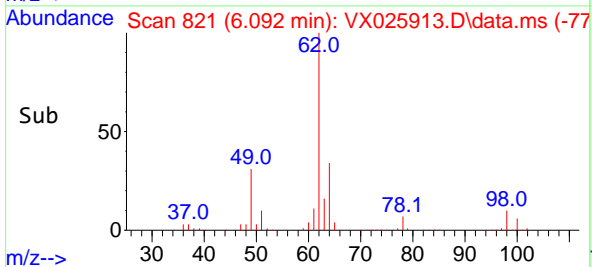
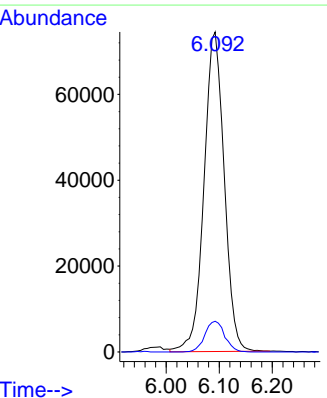
Tgt Ion: 83 Resp: 248569  
 Ion Ratio Lower Upper  
 83 100  
 85 65.8 44.9 83.5

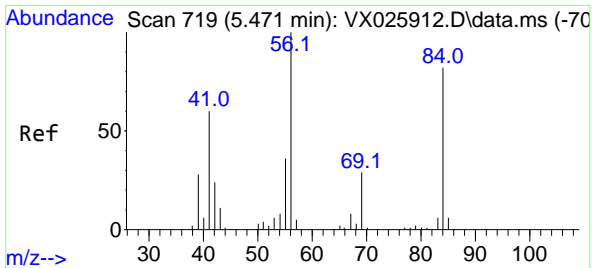


#27  
 1,2-Dichloroethane  
 Concen: 93.884 ug/L  
 RT: 6.092 min Scan# 821  
 Delta R.T. 0.006 min  
 Lab File: VX025913.D  
 Acq: 20 Dec 2021 13:45



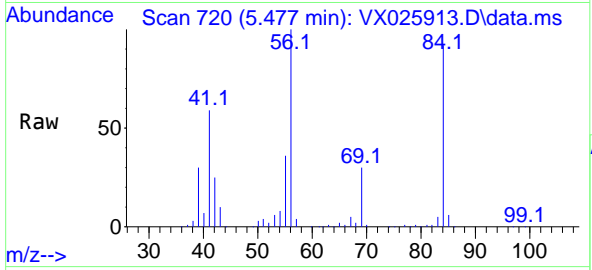
Tgt Ion: 62 Resp: 197130  
 Ion Ratio Lower Upper  
 62 100  
 98 9.6 8.2 12.2



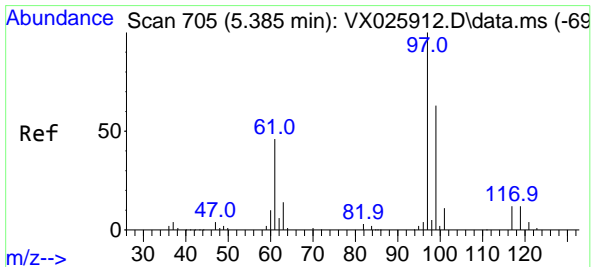
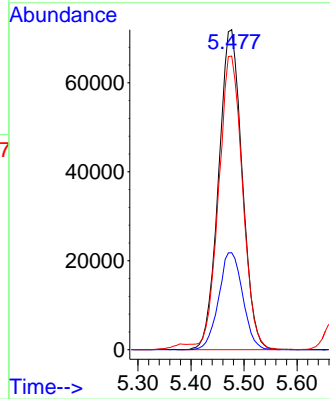
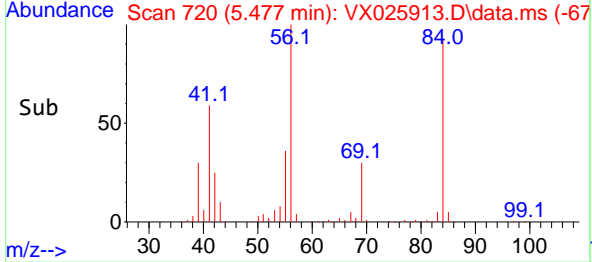


#29  
 Cyclohexane  
 Concen: 115.545 ug/L  
 RT: 5.477 min Scan# 719  
 Delta R.T. 0.006 min  
 Lab File: VX025913.D  
 Acq: 20 Dec 2021 13:45

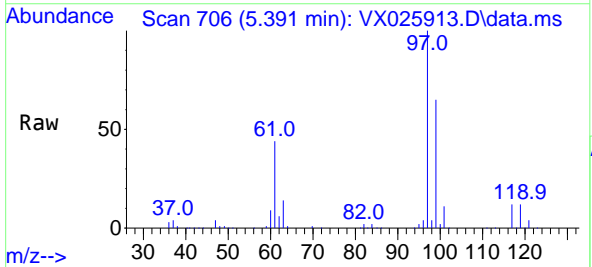
Instrument : MSVOA\_X  
 ClientSampleId :



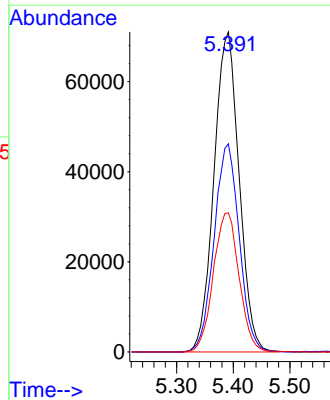
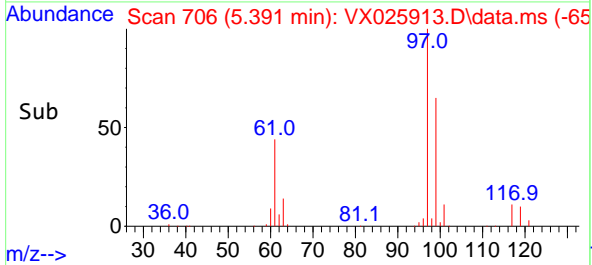
Tgt Ion: 56 Resp: 221868  
 Ion Ratio Lower Upper  
 56 100  
 69 30.9 25.4 38.2  
 84 92.8 76.6 114.8

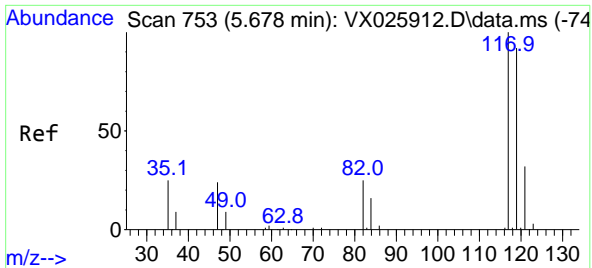


#30  
 1,1,1-Trichloroethane  
 Concen: 104.668 ug/L  
 RT: 5.391 min Scan# 706  
 Delta R.T. 0.006 min  
 Lab File: VX025913.D  
 Acq: 20 Dec 2021 13:45



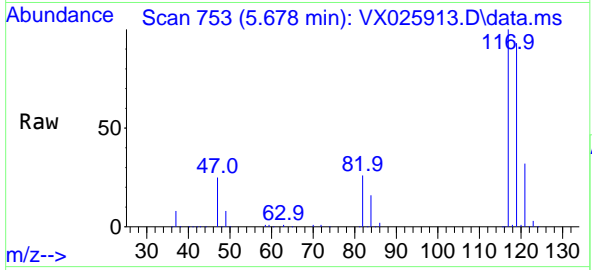
Tgt Ion: 97 Resp: 218921  
 Ion Ratio Lower Upper  
 97 100  
 99 64.9 51.5 77.3  
 61 44.6 33.1 49.7



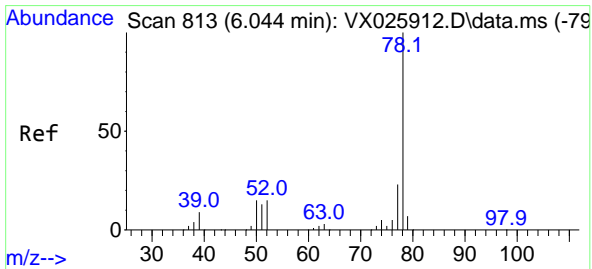
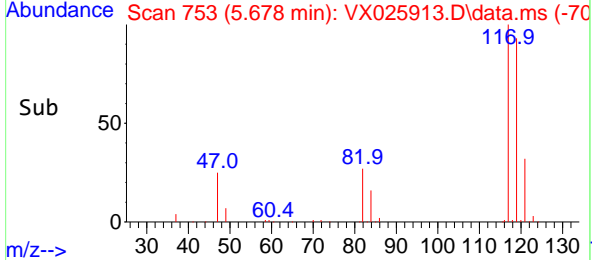
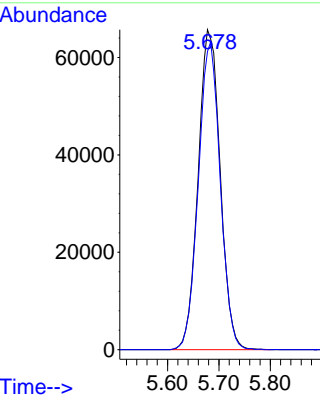


#31  
 Carbon tetrachloride  
 Concen: 128.130 ug/L  
 RT: 5.678 min Scan# 753  
 Delta R.T. -0.000 min  
 Lab File: VX025913.D  
 Acq: 20 Dec 2021 13:45

Instrument : MSVOA\_X  
 ClientSampleId :

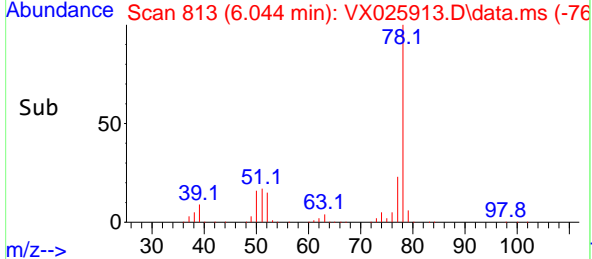
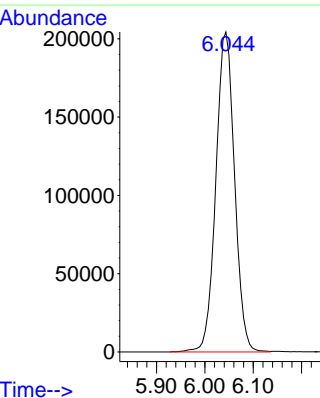
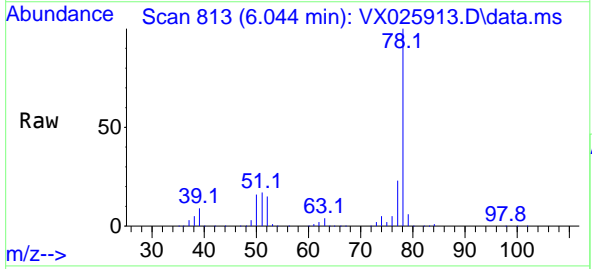


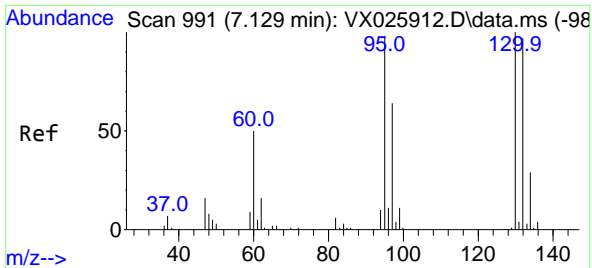
Tgt Ion:117 Resp: 195703  
 Ion Ratio Lower Upper  
 117 100  
 119 95.3 76.8 115.2



#33  
 Benzene  
 Concen: 99.753 ug/L  
 RT: 6.044 min Scan# 813  
 Delta R.T. -0.000 min  
 Lab File: VX025913.D  
 Acq: 20 Dec 2021 13:45

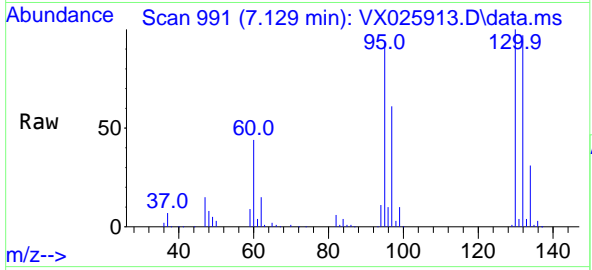
Tgt Ion: 78 Resp: 548928



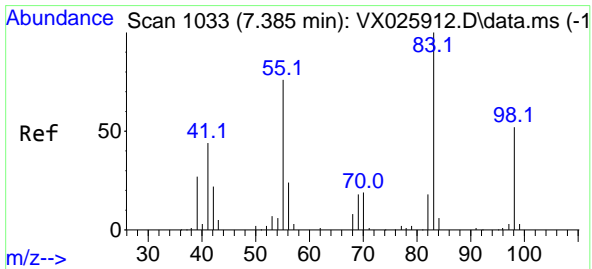
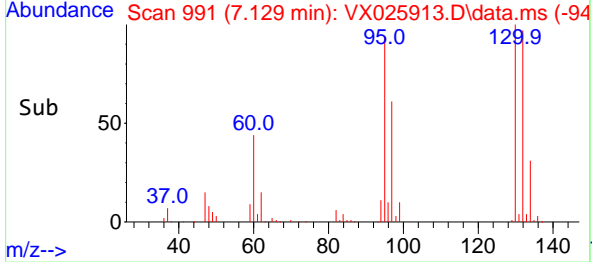
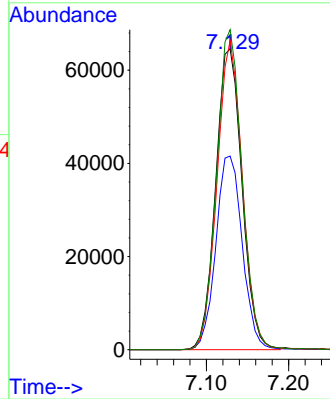


#34  
 Trichloroethene  
 Concen: 101.409 ug/L  
 RT: 7.129 min Scan# 991  
 Delta R.T. -0.000 min  
 Lab File: VX025913.D  
 Acq: 20 Dec 2021 13:45

Instrument : MSVOA\_X  
 ClientSampleId :

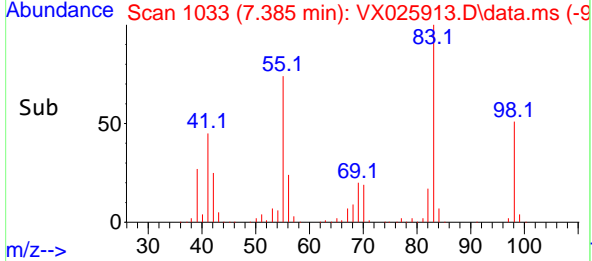
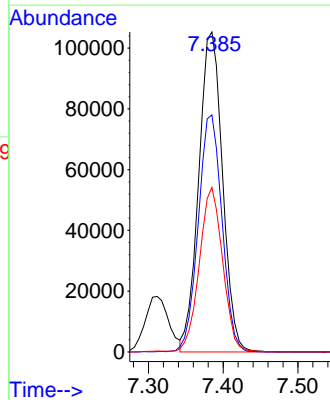
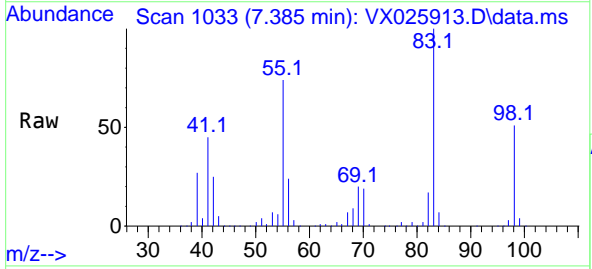


Tgt Ion: 95 Resp: 143884  
 Ion Ratio Lower Upper  
 95 100  
 97 64.3 46.0 85.4  
 132 102.7 75.0 139.2  
 130 106.4 77.9 144.7

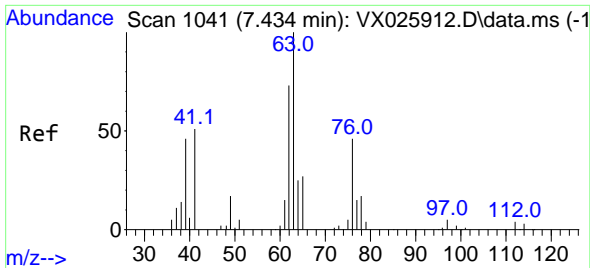


#35  
 Methylcyclohexane  
 Concen: 123.455 ug/L  
 RT: 7.385 min Scan# 1033  
 Delta R.T. -0.000 min  
 Lab File: VX025913.D  
 Acq: 20 Dec 2021 13:45

Tgt Ion: 83 Resp: 232502  
 Ion Ratio Lower Upper  
 83 100  
 55 73.7 57.3 85.9  
 98 50.2 41.1 61.7

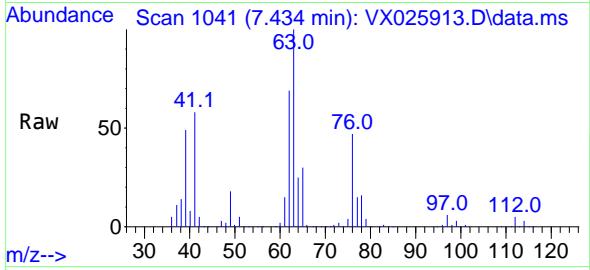




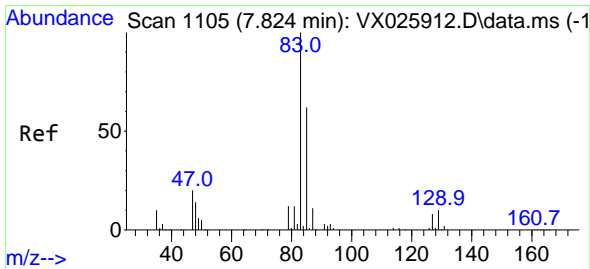
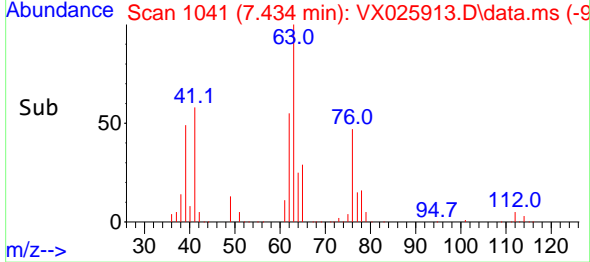
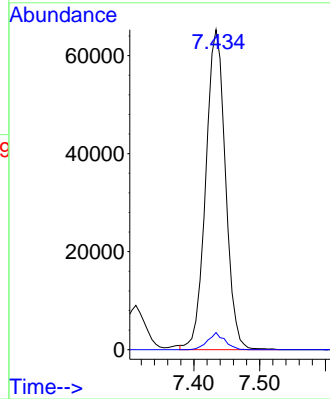


#37  
 1,2-Dichloropropane  
 Concen: 99.650 ug/L  
 RT: 7.434 min Scan# 1041  
 Delta R.T. -0.000 min  
 Lab File: VX025913.D  
 Acq: 20 Dec 2021 13:45

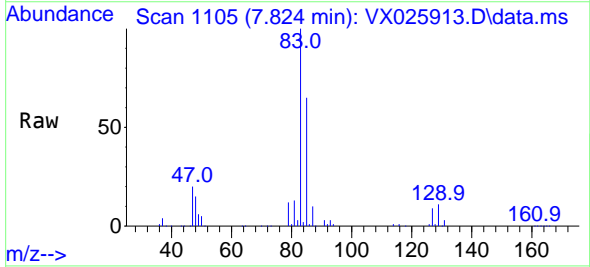
Instrument : MSVOA\_X  
 ClientSampleId :



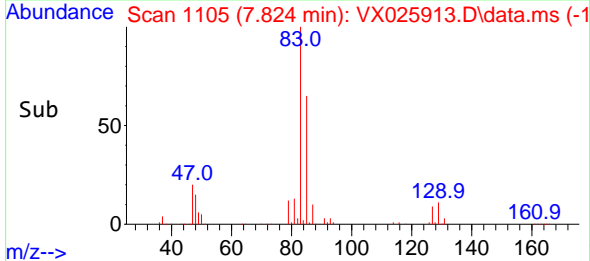
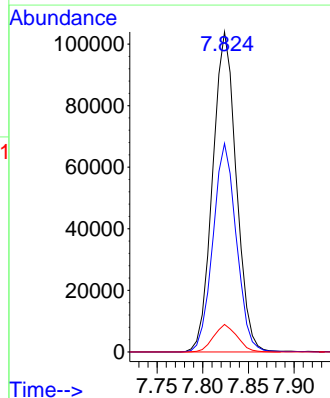
Tgt Ion: 63 Resp: 135936  
 Ion Ratio Lower Upper  
 63 100  
 112 4.6 4.0 6.0

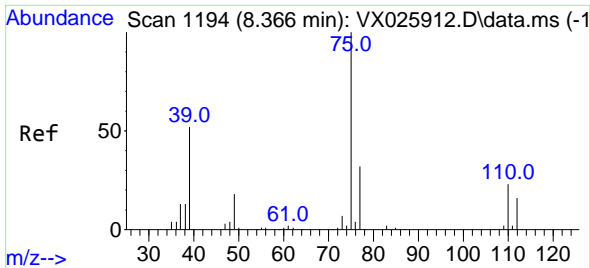


#38  
 Bromodichloromethane  
 Concen: 103.237 ug/L  
 RT: 7.824 min Scan# 1105  
 Delta R.T. -0.000 min  
 Lab File: VX025913.D  
 Acq: 20 Dec 2021 13:45



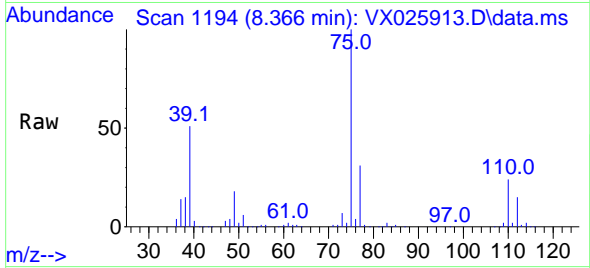
Tgt Ion: 83 Resp: 187164  
 Ion Ratio Lower Upper  
 83 100  
 85 65.1 45.3 84.1  
 127 8.6 7.3 10.9



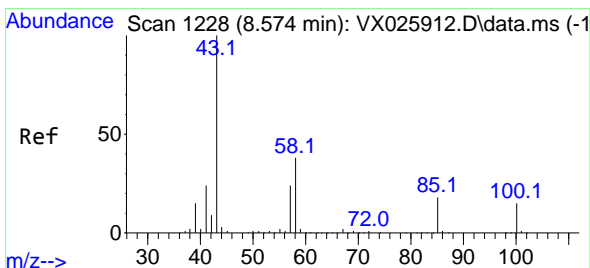
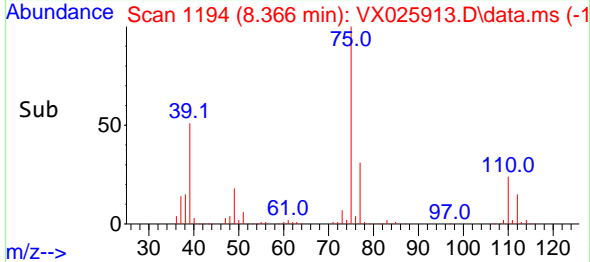
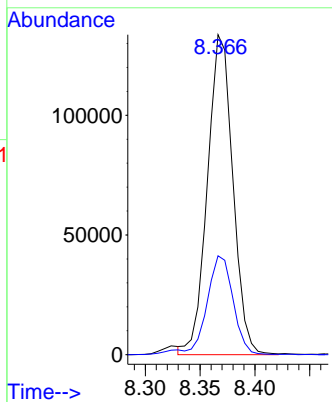


#39  
 cis-1,3-Dichloropropene  
 Concen: 114.280 ug/L  
 RT: 8.366 min Scan# 1194  
 Delta R.T. -0.000 min  
 Lab File: VX025913.D  
 Acq: 20 Dec 2021 13:45

Instrument : MSVOA\_X  
 ClientSampleId :

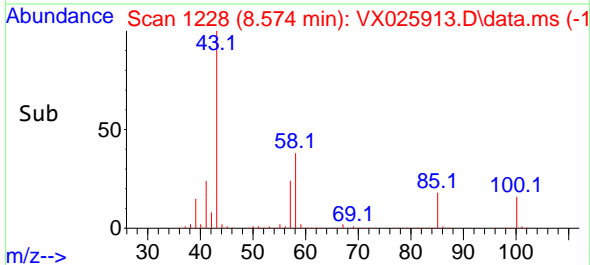
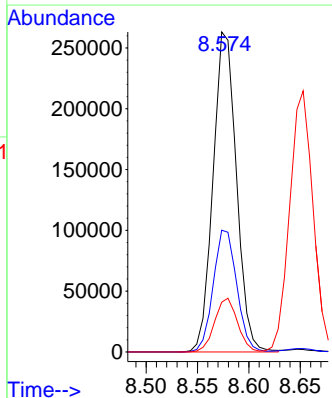
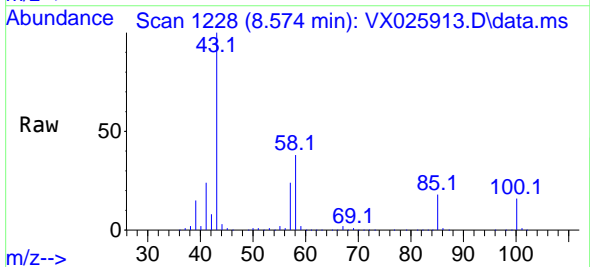


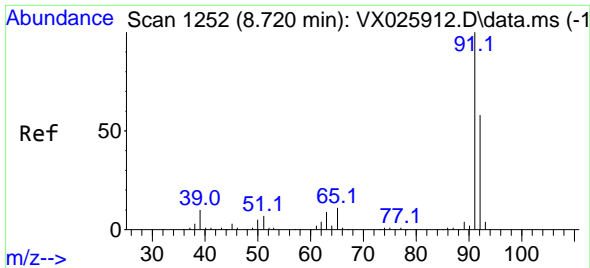
Tgt Ion: 75 Resp: 215764  
 Ion Ratio Lower Upper  
 75 100  
 77 30.9 22.3 41.3



#40  
 4-Methyl-2-pentanone  
 Concen: 201.949 ug/L  
 RT: 8.574 min Scan# 1228  
 Delta R.T. -0.000 min  
 Lab File: VX025913.D  
 Acq: 20 Dec 2021 13:45

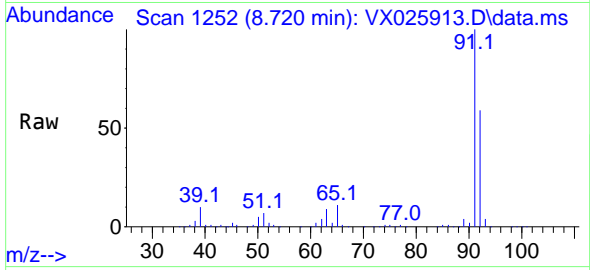
Tgt Ion: 43 Resp: 416649  
 Ion Ratio Lower Upper  
 43 100  
 58 38.3 32.2 48.2  
 100 16.4 14.2 21.2



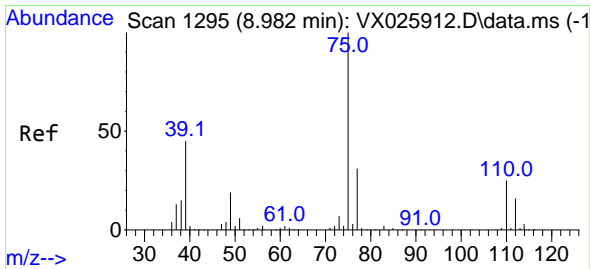
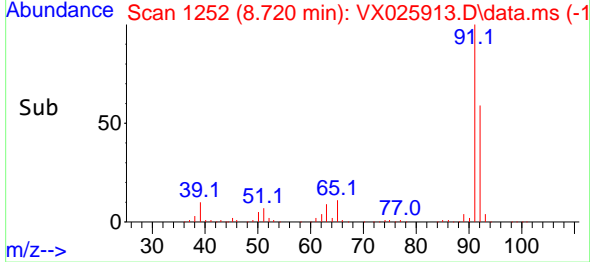
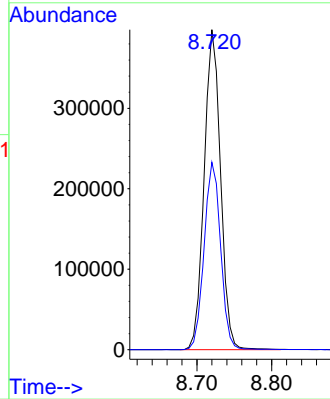


#42  
 Toluene  
 Concen: 103.251 ug/L  
 RT: 8.720 min Scan# 1252  
 Delta R.T. -0.000 min  
 Lab File: VX025913.D  
 Acq: 20 Dec 2021 13:45

Instrument : MSVOA\_X  
 ClientSampleId :

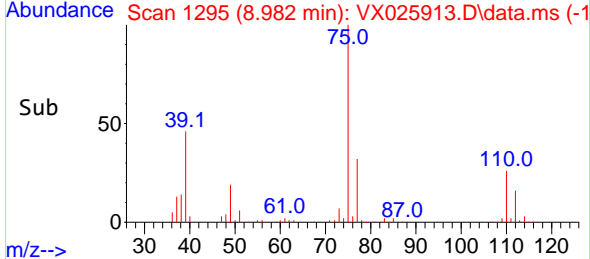
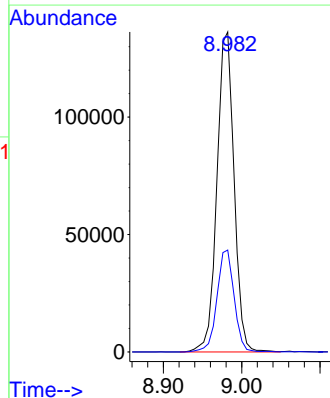
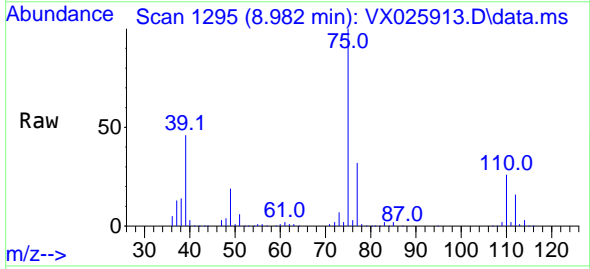


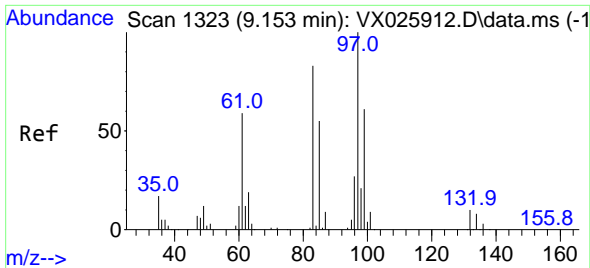
Tgt Ion: 91 Resp: 605686  
 Ion Ratio Lower Upper  
 91 100  
 92 58.5 41.2 76.6



#44  
 trans-1,3-Dichloropropene  
 Concen: 119.713 ug/L  
 RT: 8.982 min Scan# 1295  
 Delta R.T. -0.000 min  
 Lab File: VX025913.D  
 Acq: 20 Dec 2021 13:45

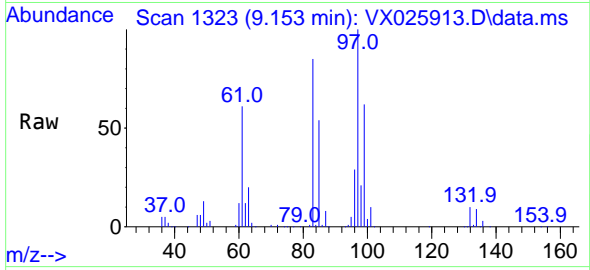
Tgt Ion: 75 Resp: 207150  
 Ion Ratio Lower Upper  
 75 100  
 77 31.8 23.0 42.8





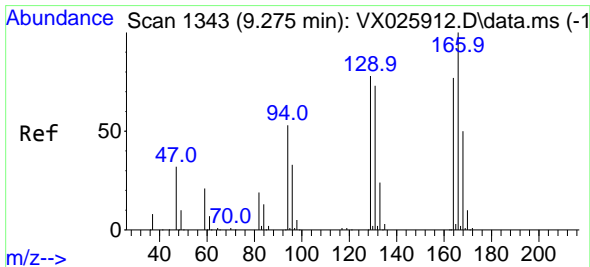
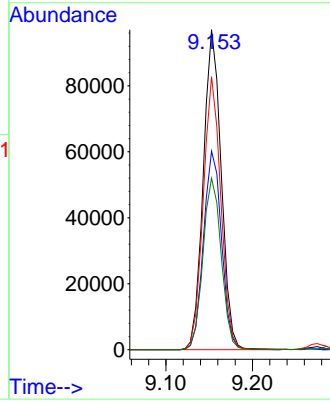
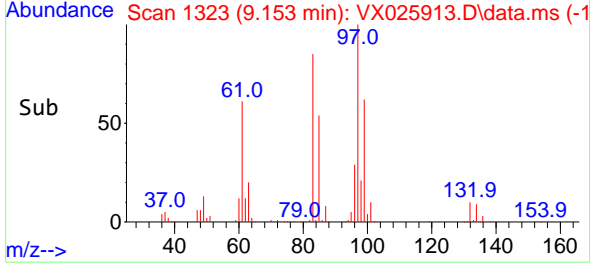
#45  
 1,1,2-Trichloroethane  
 Concen: 97.809 ug/L  
 RT: 9.153 min Scan# 11  
 Delta R.T. -0.000 min  
 Lab File: VX025913.D  
 Acq: 20 Dec 2021 13:45

Instrument : MSVOA\_X  
 ClientSampleId :

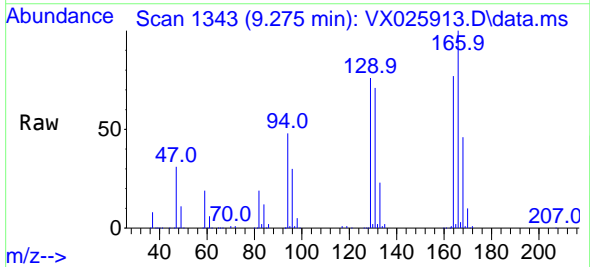


Tgt Ion: 97 Resp: 139634

Ion	Ratio	Lower	Upper
97	100		
99	62.0	46.0	85.4
83	85.3	59.6	110.8
85	53.6	39.1	72.7

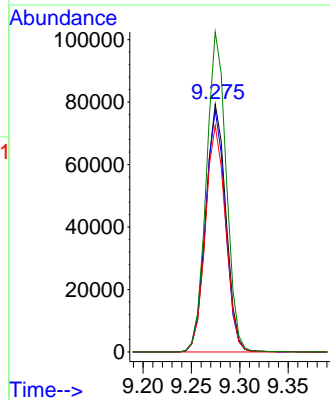
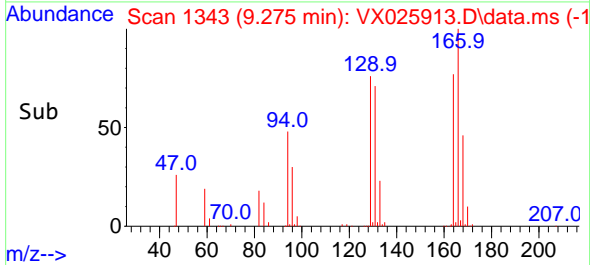


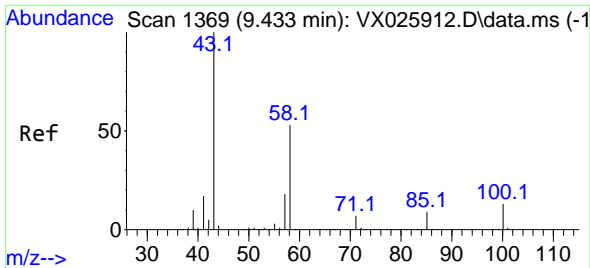
#46  
 Tetrachloroethene  
 Concen: 108.893 ug/L  
 RT: 9.275 min Scan# 1343  
 Delta R.T. -0.000 min  
 Lab File: VX025913.D  
 Acq: 20 Dec 2021 13:45



Tgt Ion: 164 Resp: 114409

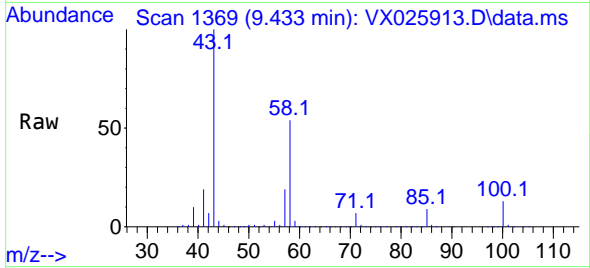
Ion	Ratio	Lower	Upper
164	100		
129	97.5	64.7	120.1
131	91.3	63.2	117.4
166	129.1	90.1	167.3



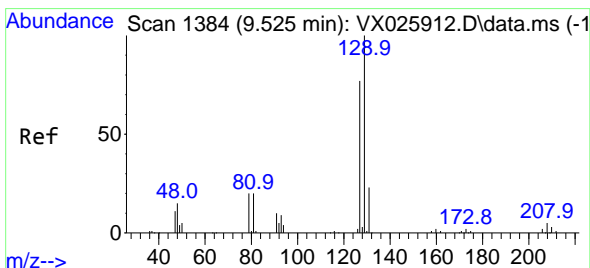
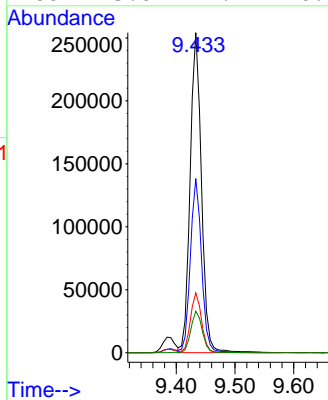
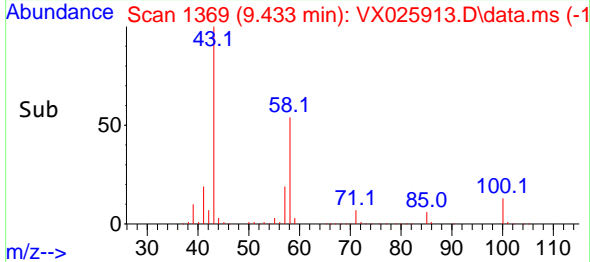


#48  
 2-Hexanone  
 Concen: 202.620 ug/L  
 RT: 9.433 min Scan# 1369  
 Delta R.T. -0.000 min  
 Lab File: VX025913.D  
 Acq: 20 Dec 2021 13:45

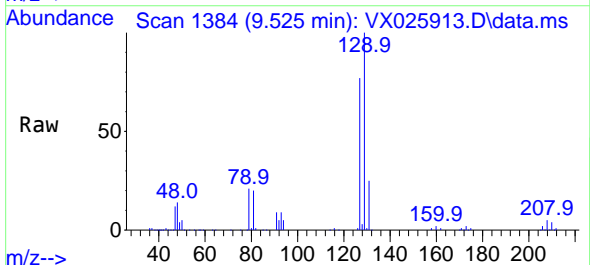
Instrument : MSVOA\_X  
 ClientSampleId :



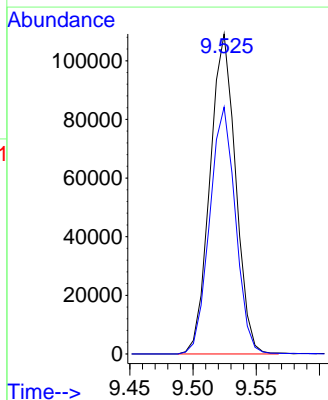
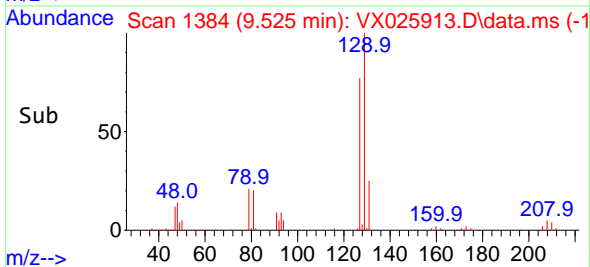
Tgt Ion: 43 Resp: 340354  
 Ion Ratio Lower Upper  
 43 100  
 58 53.8 44.2 66.4  
 57 18.4 15.1 22.7  
 100 13.0 11.1 16.7

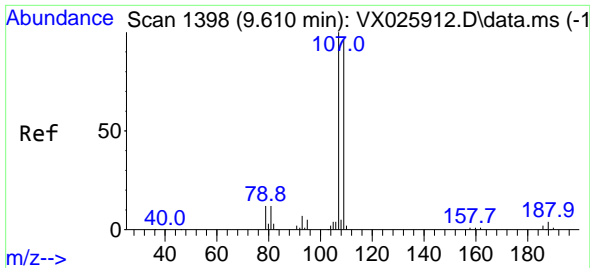


#49  
 Dibromochloromethane  
 Concen: 108.892 ug/L  
 RT: 9.525 min Scan# 1384  
 Delta R.T. -0.000 min  
 Lab File: VX025913.D  
 Acq: 20 Dec 2021 13:45



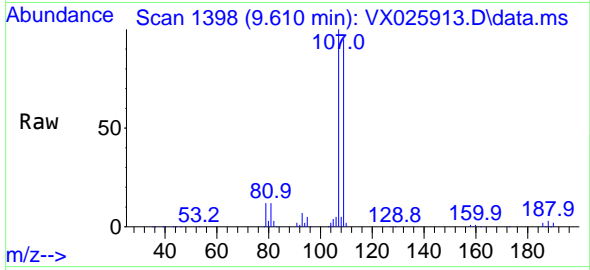
Tgt Ion: 129 Resp: 154065  
 Ion Ratio Lower Upper  
 129 100  
 127 77.1 52.4 97.2



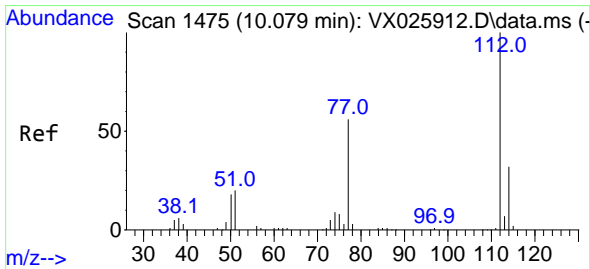
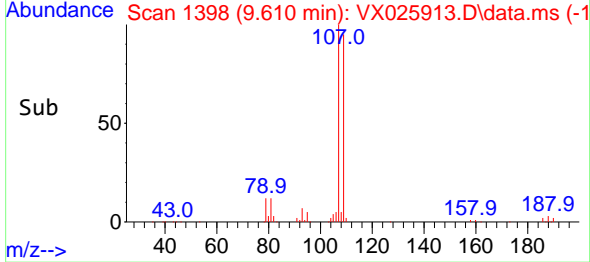
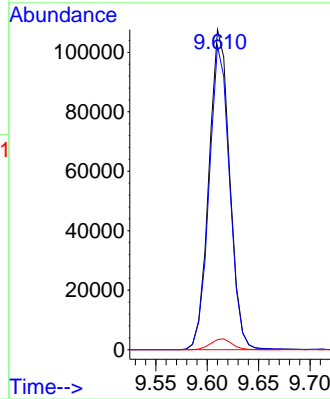


#50  
 1,2-Dibromoethane  
 Concen: 101.827 ug/L  
 RT: 9.610 min Scan# 11  
 Delta R.T. -0.000 min  
 Lab File: VX025913.D  
 Acq: 20 Dec 2021 13:45

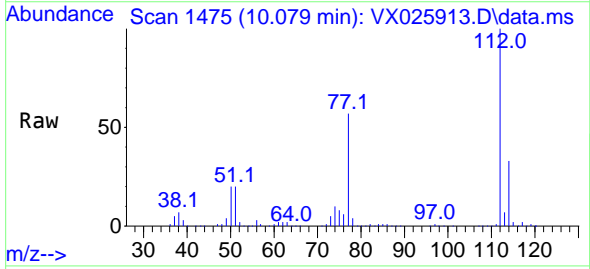
Instrument : MSVOA\_X  
 ClientSampleId :



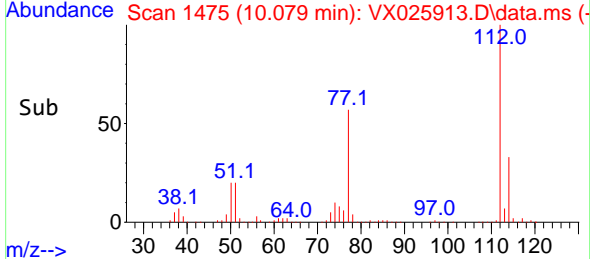
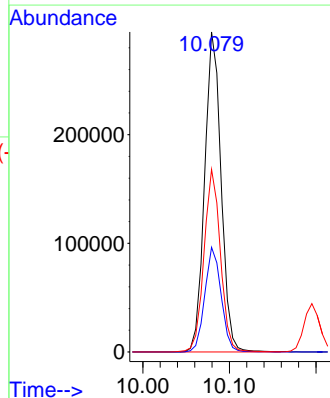
Tgt Ion:107 Resp: 151076  
 Ion Ratio Lower Upper  
 107 100  
 109 94.9 65.3 121.3  
 188 3.2 2.9 4.3

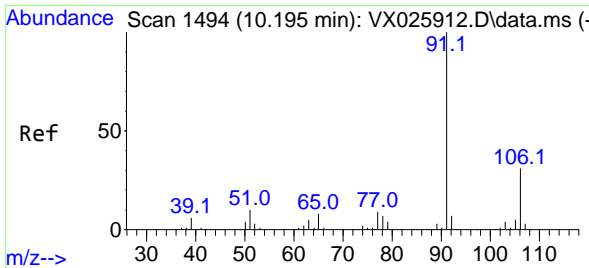


#51  
 Chlorobenzene  
 Concen: 101.057 ug/L  
 RT: 10.079 min Scan# 1475  
 Delta R.T. -0.000 min  
 Lab File: VX025913.D  
 Acq: 20 Dec 2021 13:45



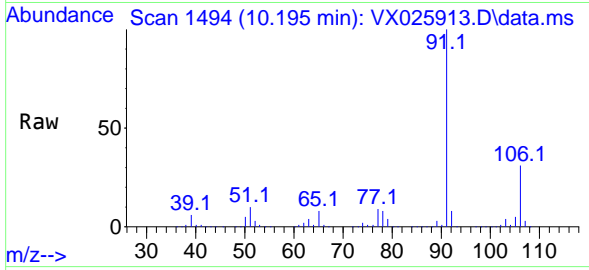
Tgt Ion:112 Resp: 388861  
 Ion Ratio Lower Upper  
 112 100  
 114 32.7 22.5 41.9  
 77 57.1 44.5 66.7



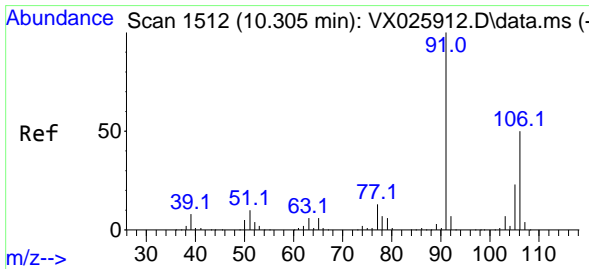
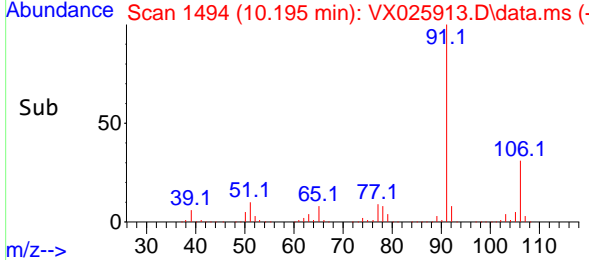
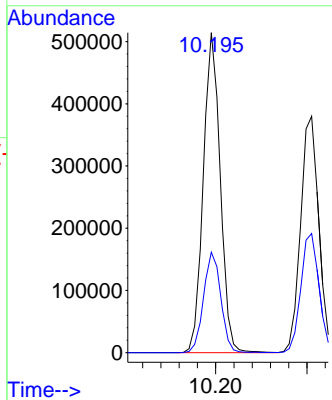


#52  
 Ethylbenzene  
 Concen: 106.864 ug/L  
 RT: 10.195 min Scan# 1494  
 Delta R.T. -0.000 min  
 Lab File: VX025913.D  
 Acq: 20 Dec 2021 13:45

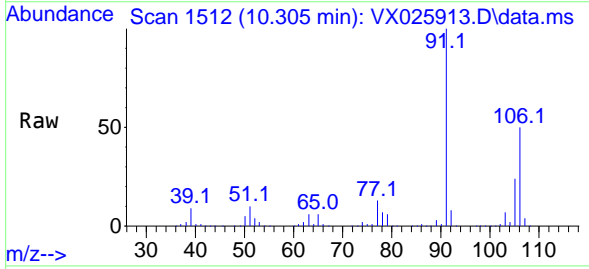
Instrument : MSVOA\_X  
 ClientSampleId :



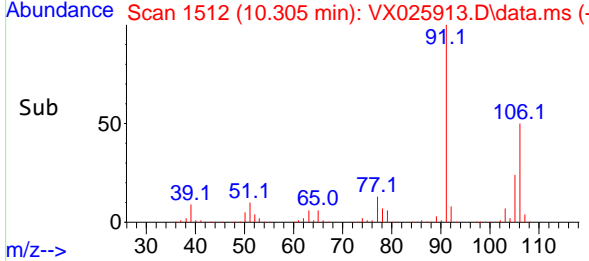
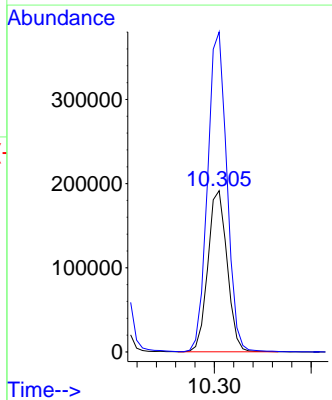
Tgt Ion: 91 Resp: 661633  
 Ion Ratio Lower Upper  
 91 100  
 106 31.4 23.1 42.9

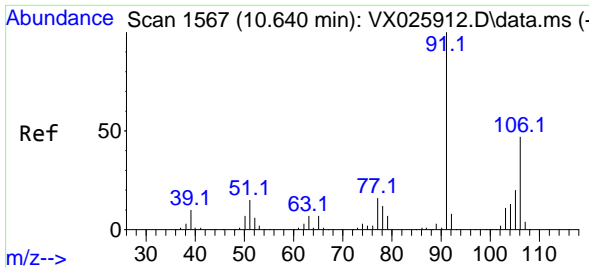


#53  
 m,p-Xylene  
 Concen: 108.329 ug/L  
 RT: 10.305 min Scan# 1512  
 Delta R.T. -0.000 min  
 Lab File: VX025913.D  
 Acq: 20 Dec 2021 13:45



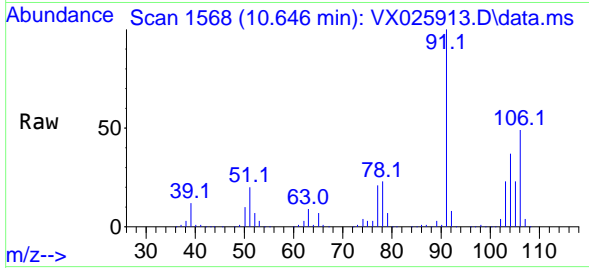
Tgt Ion: 106 Resp: 264876  
 Ion Ratio Lower Upper  
 106 100  
 91 198.4 136.8 254.2



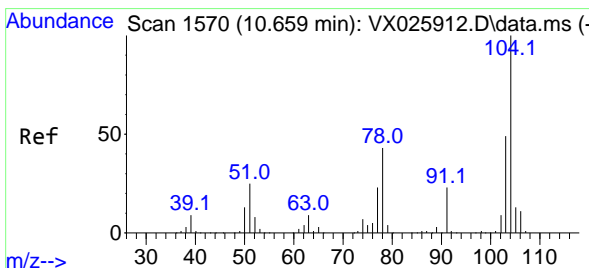
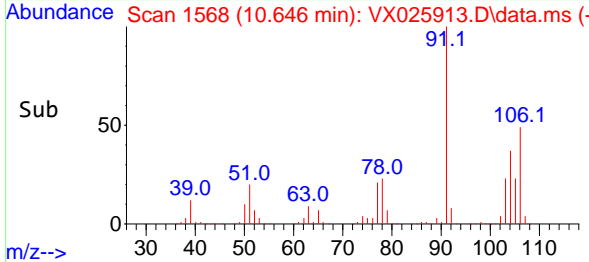
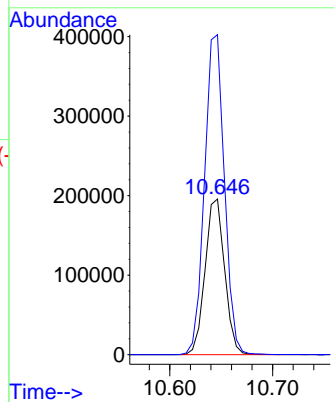


#54  
 o-Xylene  
 Concen: 108.824 ug/L  
 RT: 10.646 min Scan# 1567  
 Delta R.T. 0.006 min  
 Lab File: VX025913.D  
 Acq: 20 Dec 2021 13:45

Instrument : MSVOA\_X  
 ClientSampleId :

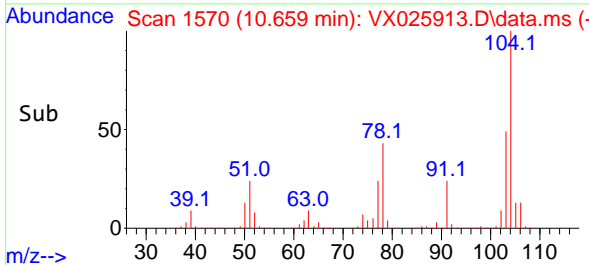
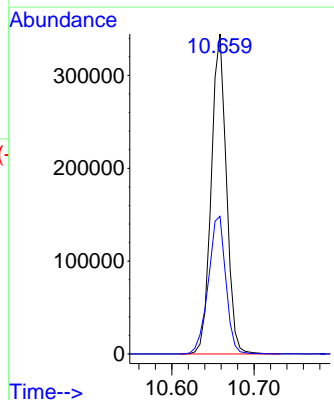
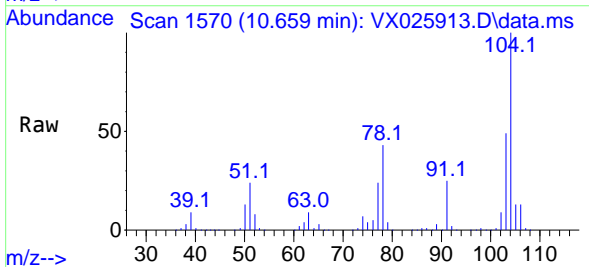


Tgt Ion:106 Resp: 259102  
 Ion Ratio Lower Upper  
 106 100  
 91 205.5 140.5 260.9

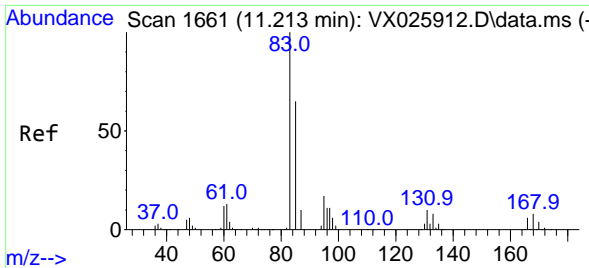


#55  
 Styrene  
 Concen: 112.335 ug/L  
 RT: 10.659 min Scan# 1570  
 Delta R.T. -0.000 min  
 Lab File: VX025913.D  
 Acq: 20 Dec 2021 13:45

Tgt Ion:104 Resp: 441911  
 Ion Ratio Lower Upper  
 104 100  
 78 43.0 28.6 53.0

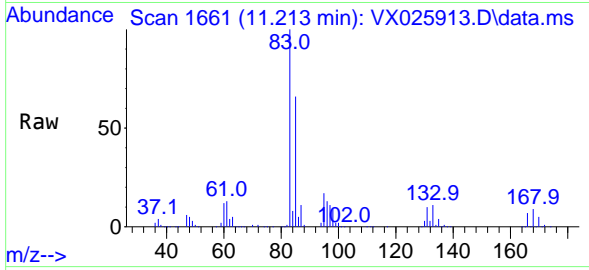




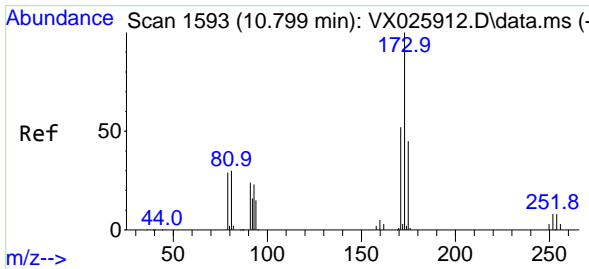
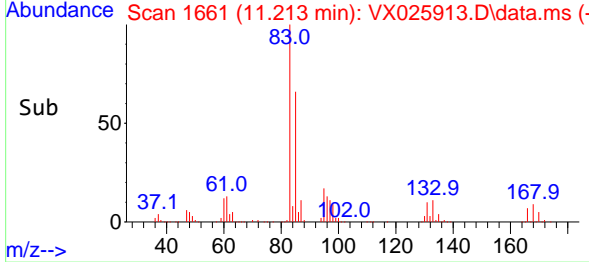
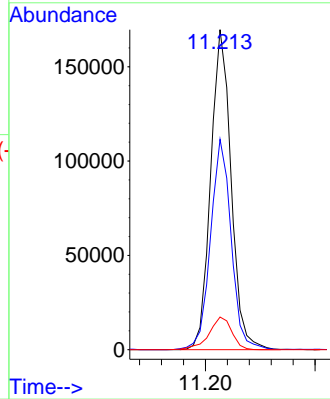


#57  
 1,1,2,2-Tetrachloroethane  
 Concen: 98.718 ug/L  
 RT: 11.213 min Scan# 1661  
 Delta R.T. -0.000 min  
 Lab File: VX025913.D  
 Acq: 20 Dec 2021 13:45

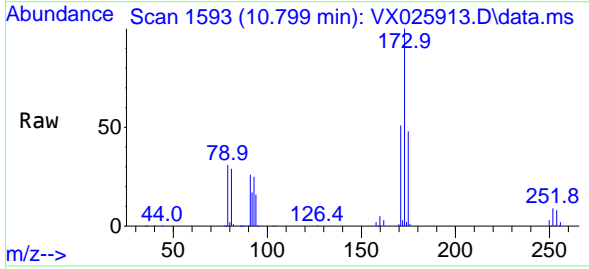
Instrument : MSVOA\_X  
 ClientSampleId :



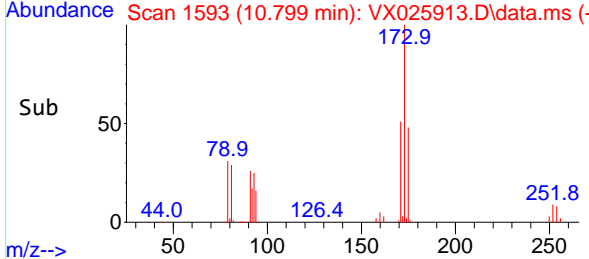
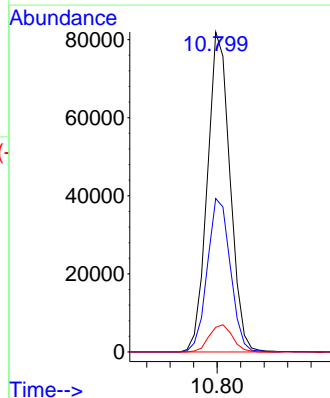
Tgt Ion: 83 Resp: 219252  
 Ion Ratio Lower Upper  
 83 100  
 85 65.7 47.0 87.2  
 131 10.2 8.5 12.7

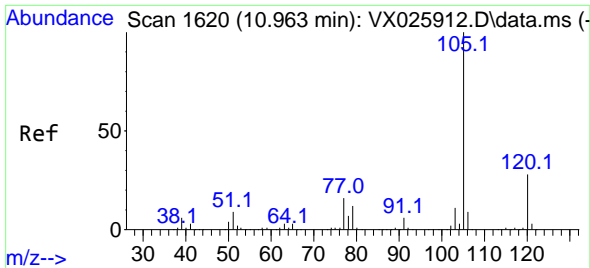


#59  
 Bromoform  
 Concen: 110.596 ug/L  
 RT: 10.799 min Scan# 1593  
 Delta R.T. -0.000 min  
 Lab File: VX025913.D  
 Acq: 20 Dec 2021 13:45



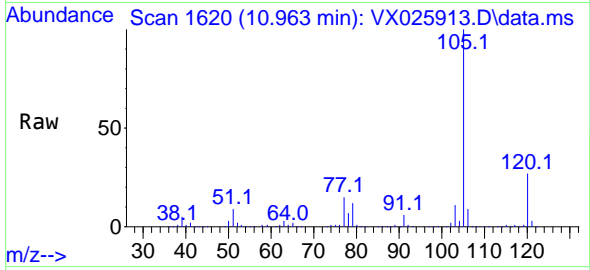
Tgt Ion: 173 Resp: 109721  
 Ion Ratio Lower Upper  
 173 100  
 175 48.7 38.6 58.0  
 254 8.7 7.7 11.5



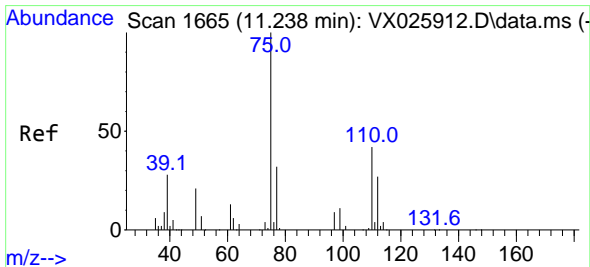
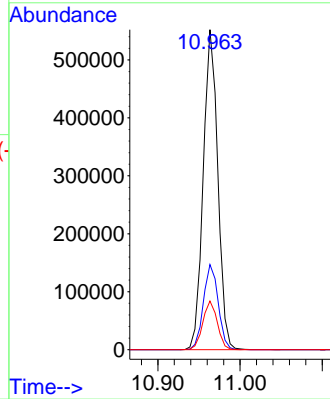
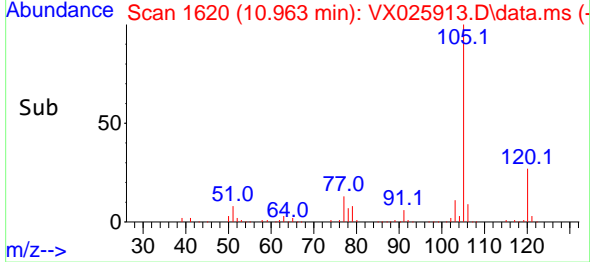


#60  
 Isopropylbenzene  
 Concen: 102.786 ug/L  
 RT: 10.963 min Scan# 1620  
 Delta R.T. -0.000 min  
 Lab File: VX025913.D  
 Acq: 20 Dec 2021 13:45

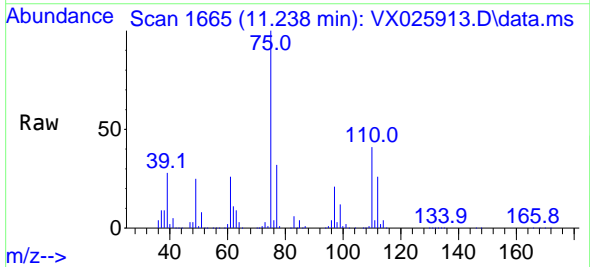
Instrument : MSVOA\_X  
 ClientSampleId :



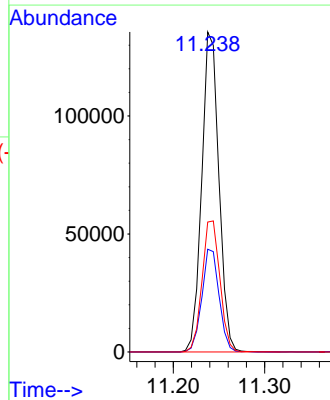
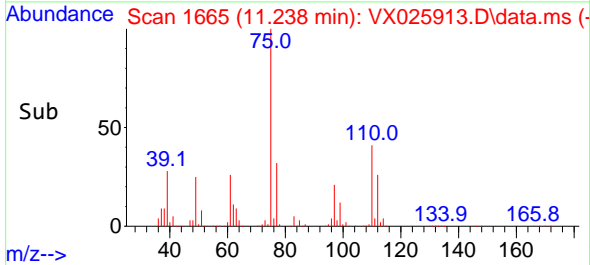
Tgt Ion:105 Resp: 678306  
 Ion Ratio Lower Upper  
 105 100  
 120 27.0 22.3 33.5  
 77 15.2 11.5 17.3

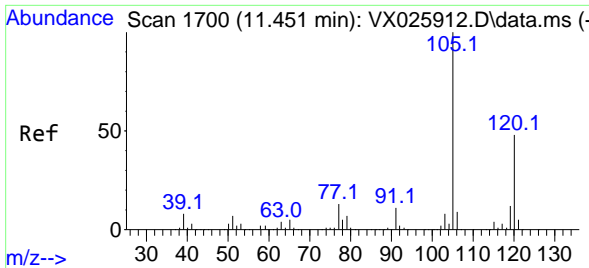


#61  
 1,2,3-Trichloropropane  
 Concen: 88.132 ug/L  
 RT: 11.238 min Scan# 1665  
 Delta R.T. -0.000 min  
 Lab File: VX025913.D  
 Acq: 20 Dec 2021 13:45



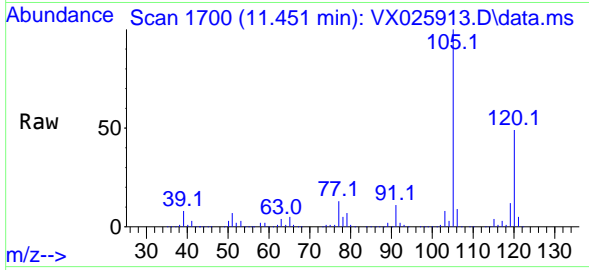
Tgt Ion: 75 Resp: 176683  
 Ion Ratio Lower Upper  
 75 100  
 77 32.3 25.8 38.8  
 110 42.6 34.7 52.1



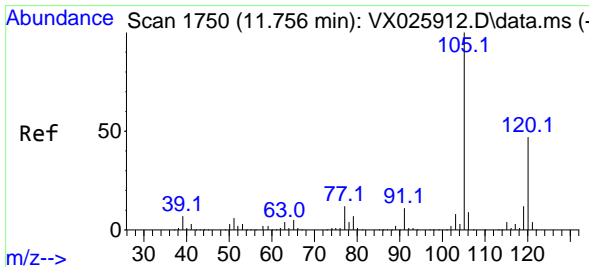
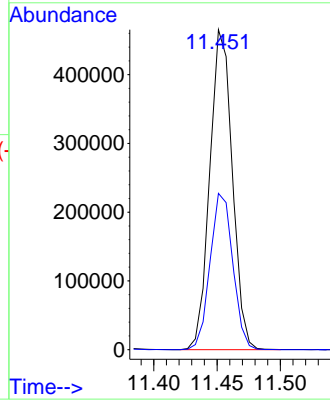
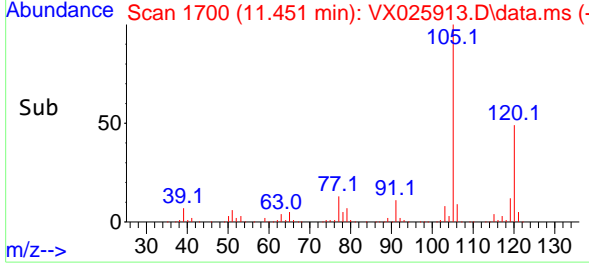


#62  
 1,3,5-Trimethylbenzene  
 Concen: 104.143 ug/L  
 RT: 11.451 min Scan# 1700  
 Delta R.T. -0.000 min  
 Lab File: VX025913.D  
 Acq: 20 Dec 2021 13:45

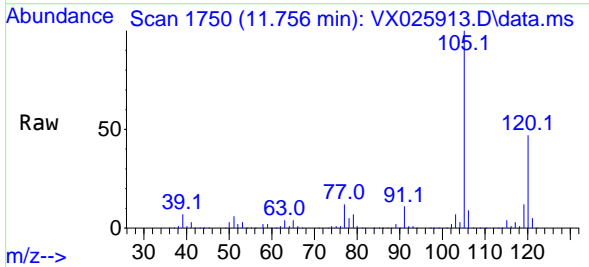
Instrument : MSVOA\_X  
 ClientSampleId :



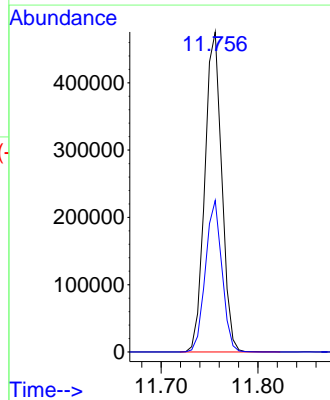
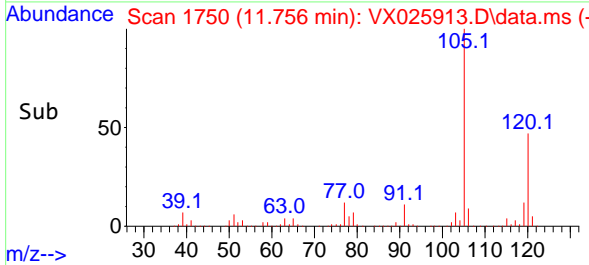
Tgt Ion:105 Resp: 576363  
 Ion Ratio Lower Upper  
 105 100  
 120 49.4 41.0 61.4

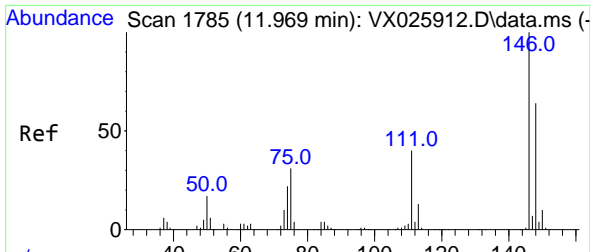


#63  
 1,2,4-Trimethylbenzene  
 Concen: 104.115 ug/L  
 RT: 11.756 min Scan# 1750  
 Delta R.T. -0.000 min  
 Lab File: VX025913.D  
 Acq: 20 Dec 2021 13:45



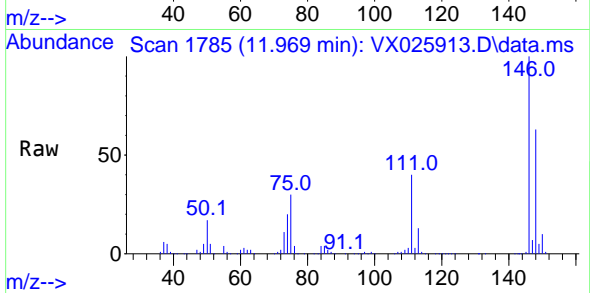
Tgt Ion:105 Resp: 579776  
 Ion Ratio Lower Upper  
 105 100  
 120 46.2 0.1 0.1#



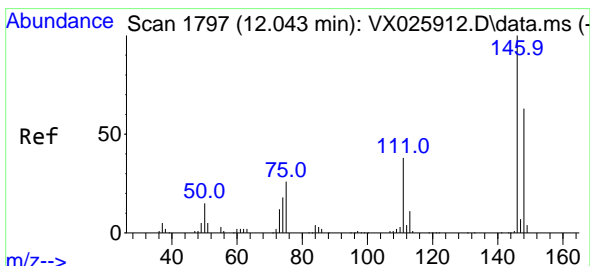
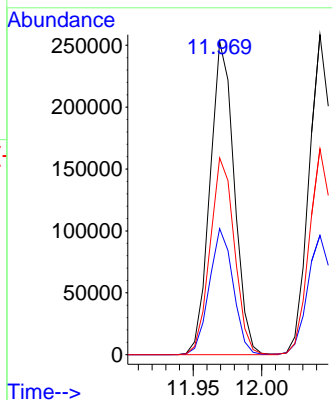
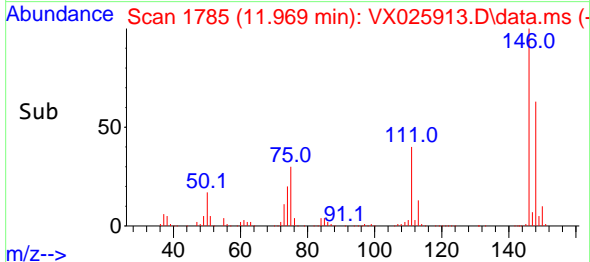


#64  
 1,3-Dichlorobenzene  
 Concen: 101.437 ug/L  
 RT: 11.969 min Scan# 1785  
 Delta R.T. -0.000 min  
 Lab File: VX025913.D  
 Acq: 20 Dec 2021 13:45

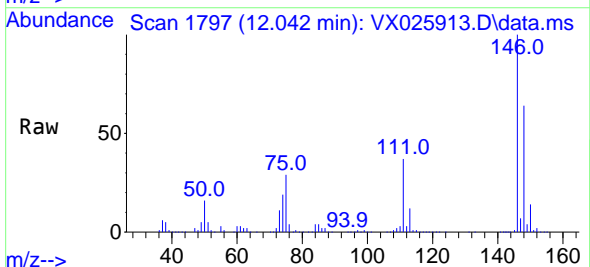
Instrument : MSVOA\_X  
 ClientSampleId :



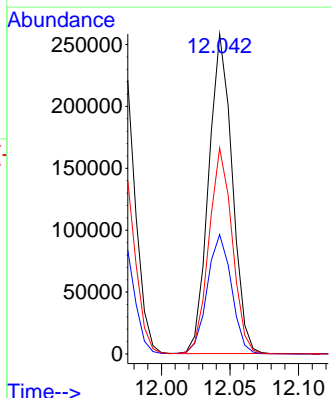
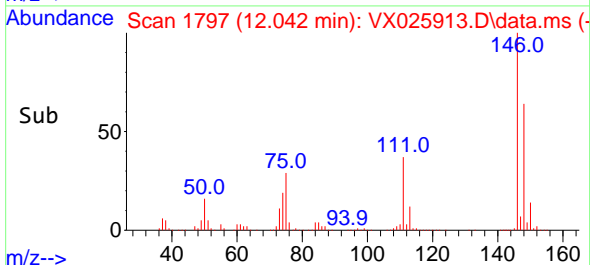
Tgt Ion:146 Resp: 311083  
 Ion Ratio Lower Upper  
 146 100  
 111 40.3 27.6 51.2  
 148 62.8 45.2 84.0

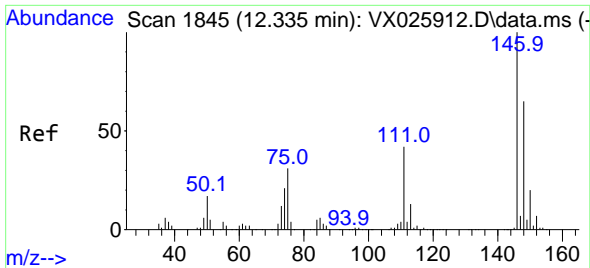


#65  
 1,4-Dichlorobenzene  
 Concen: 99.257 ug/L  
 RT: 12.042 min Scan# 1797  
 Delta R.T. -0.000 min  
 Lab File: VX025913.D  
 Acq: 20 Dec 2021 13:45



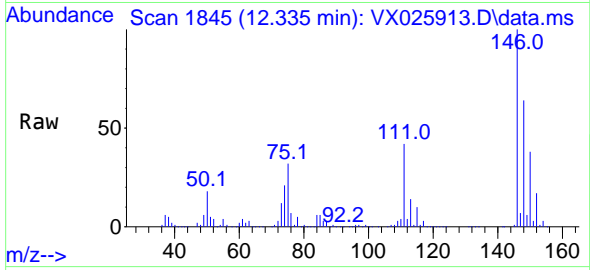
Tgt Ion:146 Resp: 308070  
 Ion Ratio Lower Upper  
 146 100  
 111 37.3 26.5 49.3  
 148 64.3 45.5 84.5



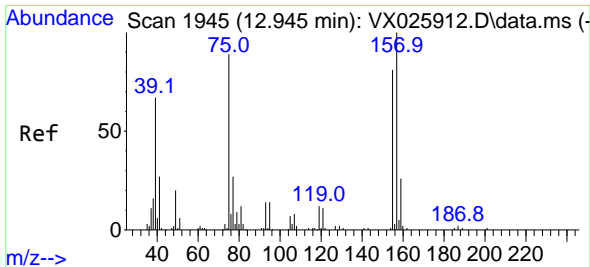
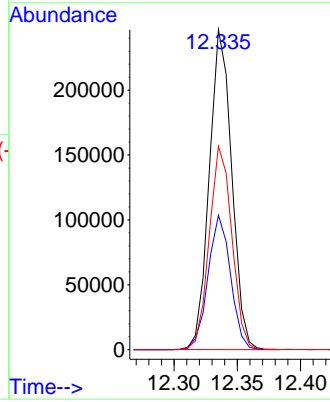
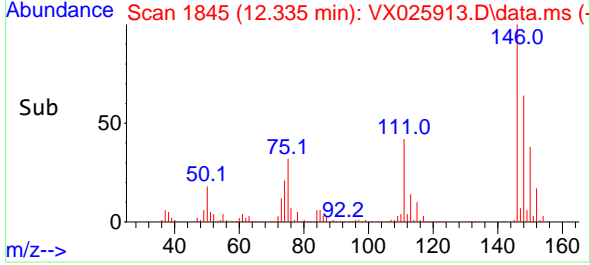


#67  
 1,2-Dichlorobenzene  
 Concen: 97.650 ug/L  
 RT: 12.335 min Scan# 1845  
 Delta R.T. -0.000 min  
 Lab File: VX025913.D  
 Acq: 20 Dec 2021 13:45

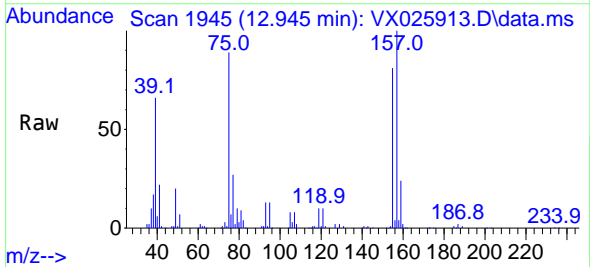
Instrument : MSVOA\_X  
 ClientSampleId :



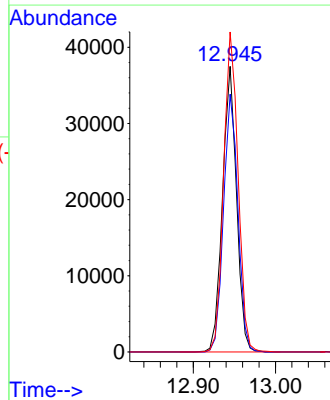
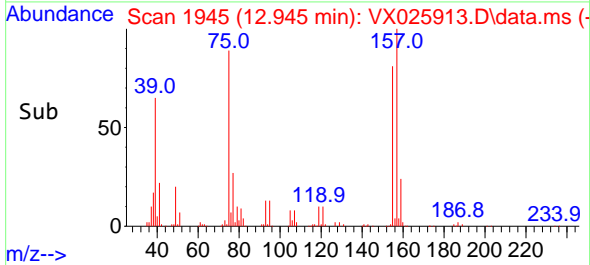
Tgt Ion:146 Resp: 303680  
 Ion Ratio Lower Upper  
 146 100  
 111 42.0 32.3 48.5  
 148 63.6 50.3 75.5

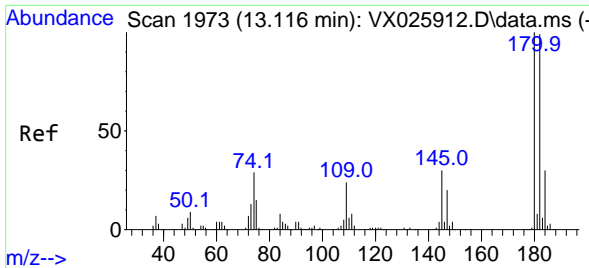


#68  
 1,2-Dibromo-3-chloropropane  
 Concen: 102.919 ug/L  
 RT: 12.945 min Scan# 1945  
 Delta R.T. -0.000 min  
 Lab File: VX025913.D  
 Acq: 20 Dec 2021 13:45



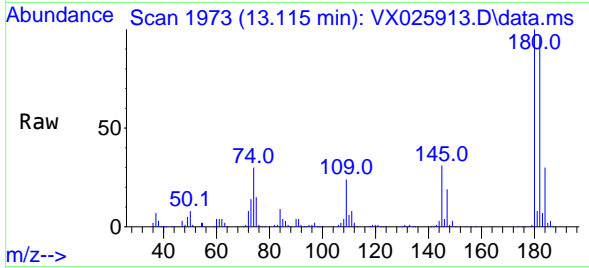
Tgt Ion: 75 Resp: 44416  
 Ion Ratio Lower Upper  
 75 100  
 155 90.2 79.4 119.2  
 157 112.0 100.4 150.6



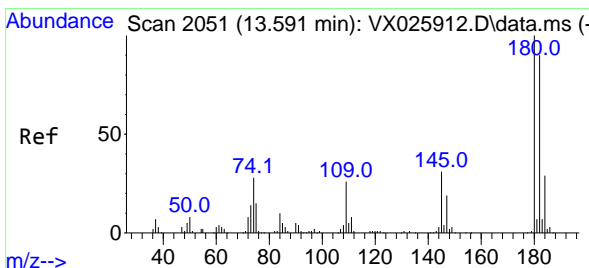
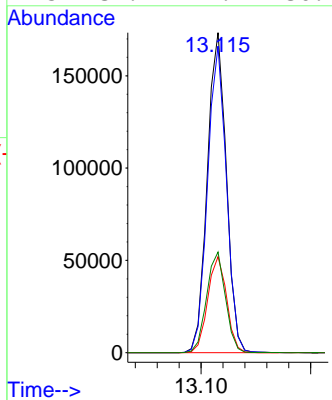
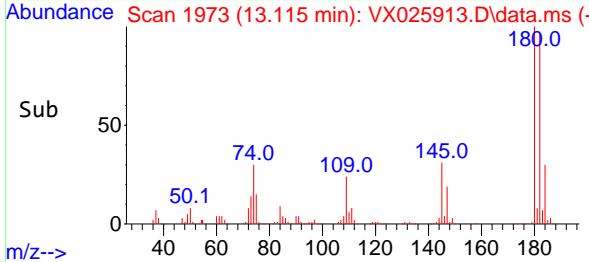


#69  
 1,3,5-Trichlorobenzene  
 Concen: 109.442 ug/L  
 RT: 13.115 min Scan# 1973  
 Delta R.T. -0.000 min  
 Lab File: VX025913.D  
 Acq: 20 Dec 2021 13:45

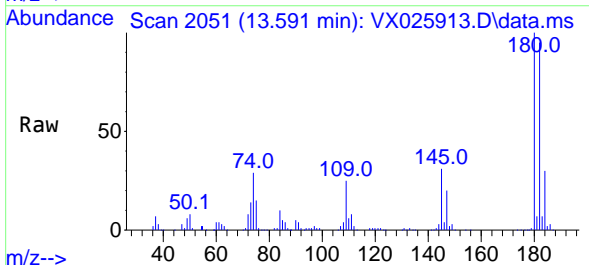
Instrument : MSVOA\_X  
 ClientSampleId :



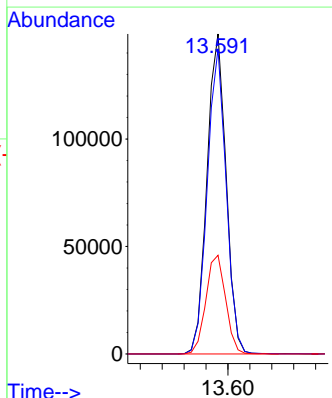
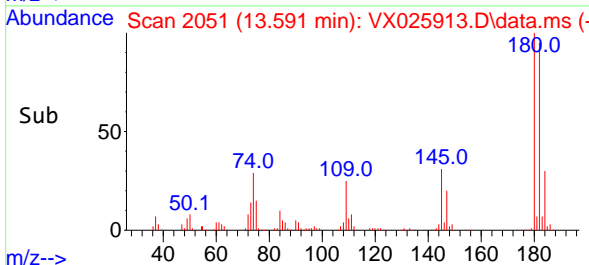
Tgt Ion:180 Resp: 208777  
 Ion Ratio Lower Upper  
 180 100  
 182 94.8 75.3 112.9  
 184 29.8 24.6 37.0  
 145 31.2 24.1 36.1

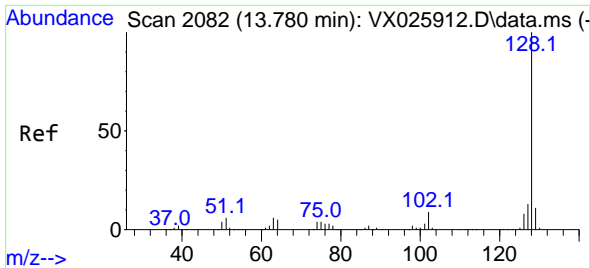


#70  
 1,2,4-trichlorobenzene  
 Concen: 121.797 ug/L  
 RT: 13.591 min Scan# 2051  
 Delta R.T. -0.000 min  
 Lab File: VX025913.D  
 Acq: 20 Dec 2021 13:45



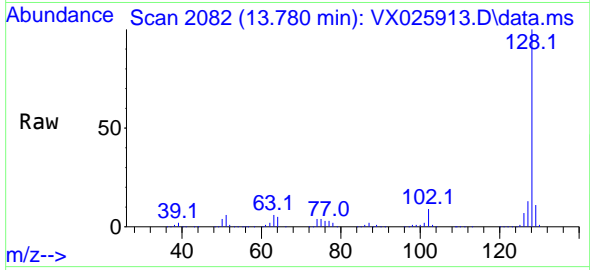
Tgt Ion:180 Resp: 180301  
 Ion Ratio Lower Upper  
 180 100  
 182 93.8 78.2 117.4  
 145 31.9 24.7 37.1



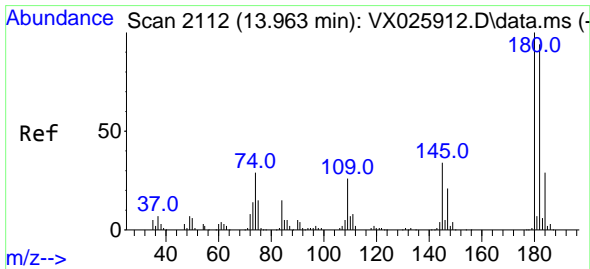
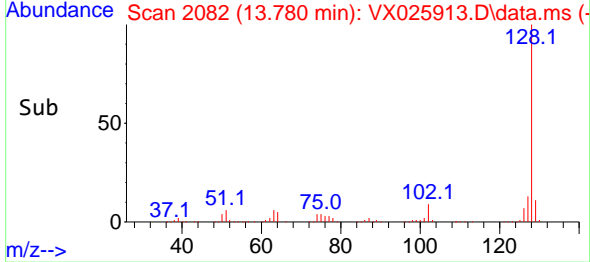
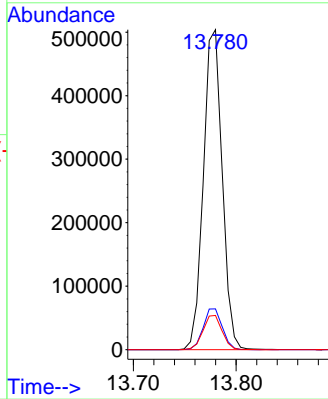


#71  
 Naphthalene  
 Concen: 130.435 ug/L  
 RT: 13.780 min Scan# 2082  
 Delta R.T. -0.000 min  
 Lab File: VX025913.D  
 Acq: 20 Dec 2021 13:45

Instrument : MSVOA\_X  
 ClientSampleId :



Tgt Ion:128 Resp: 641618  
 Ion Ratio Lower Upper  
 128 100  
 127 12.9 10.1 15.1  
 129 10.9 8.7 13.1



#72  
 1,2,3-Trichlorobenzene  
 Concen: 123.462 ug/L  
 RT: 13.963 min Scan# 2112  
 Delta R.T. -0.000 min  
 Lab File: VX025913.D  
 Acq: 20 Dec 2021 13:45

Tgt Ion:180 Resp: 182116  
 Ion Ratio Lower Upper  
 180 100  
 182 95.9 75.2 112.8  
 145 34.0 25.8 38.6

