

Data Path : Z:\voasrv\HPCHEM1\MSVOA_X\Data\VX122022\
 Data File : VX033505.D
 Acq On : 20 Dec 2022 14:08
 Operator : JC/MD
 Sample : N6149-04 100X
 Misc : 5.0mL/MSVOA_X/WATER
 ALS Vial : 9 Sample Multiplier: 1

Instrument :
 MSVOA_X
 ClientSampleId :
 RING-1

Quant Time: Dec 21 04:14:24 2022
 Quant Method : Z:\voasrv\HPCHEM1\MSVOA_X\Method\82X120722W.M
 Quant Title : SW846 8260
 QLast Update : Wed Dec 07 12:43:54 2022
 Response via : Initial Calibration

Compound	R.T.	QIon	Response	Conc	Units	Dev(Min)

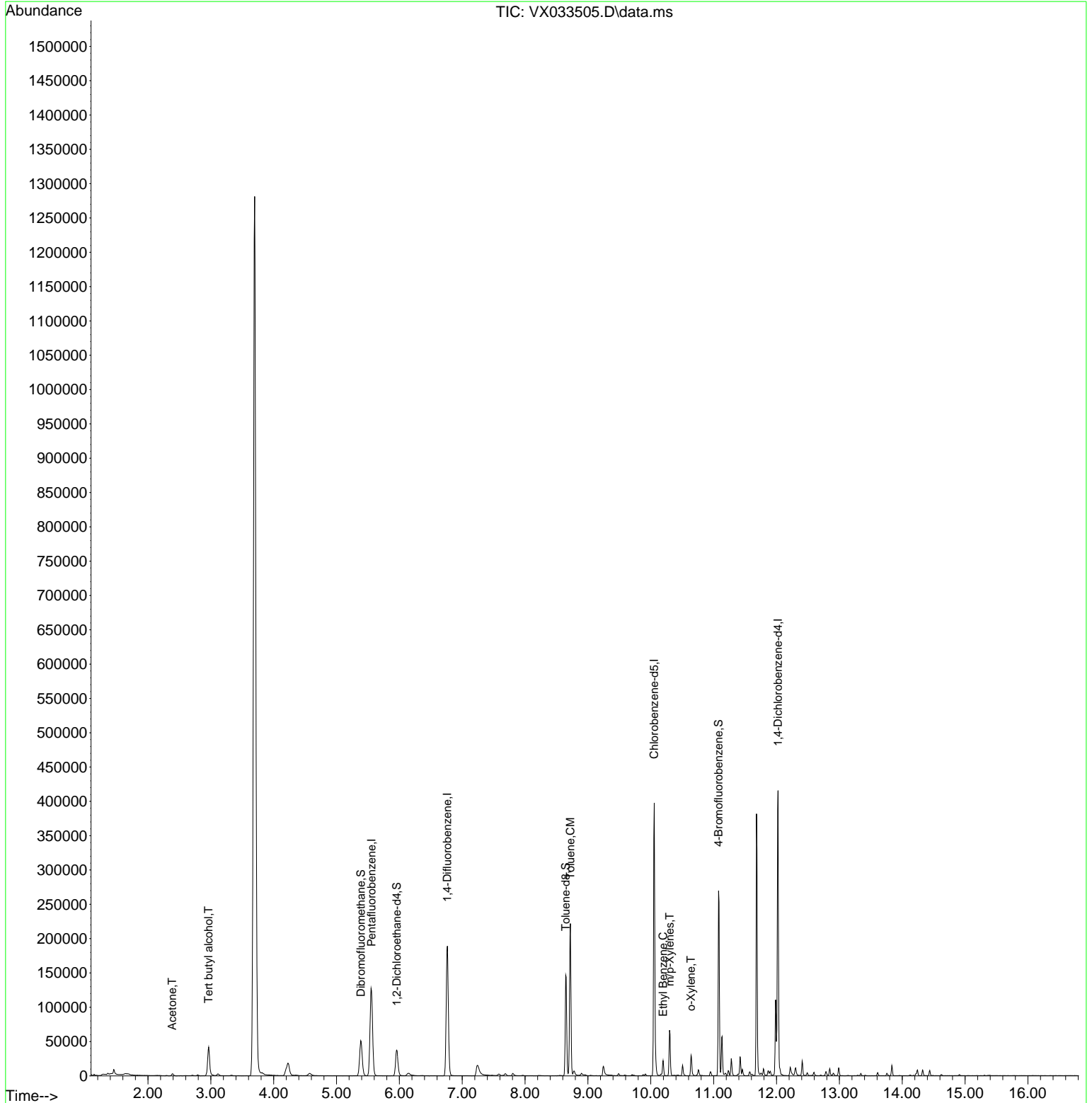
Internal Standards						
1) Pentafluorobenzene	5.556	168	126152	50.000	ug/l	0.00
34) 1,4-Difluorobenzene	6.763	114	202358	50.000	ug/l	0.00
63) Chlorobenzene-d5	10.055	117	180972	50.000	ug/l	0.00
72) 1,4-Dichlorobenzene-d4	12.024	152	87790	50.000	ug/l	0.00
System Monitoring Compounds						
33) 1,2-Dichloroethane-d4	5.958	65	38333	47.365	ug/l	0.00
Spiked Amount	50.000	Range 78 - 117	Recovery =	94.740%		
35) Dibromofluoromethane	5.385	113	44938	49.373	ug/l	0.00
Spiked Amount	50.000	Range 75 - 124	Recovery =	98.740%		
50) Toluene-d8	8.647	98	90460	47.510	ug/l	0.00
Spiked Amount	50.000	Range 92 - 112	Recovery =	95.020%		
62) 4-Bromofluorobenzene	11.079	95	72072	49.505	ug/l	0.00
Spiked Amount	50.000	Range 83 - 123	Recovery =	99.020%		
Target Compounds						
						Qvalue
11) Tert butyl alcohol	2.965	59	6257	25.288	ug/l #	91
16) Acetone	2.386	43	3868	6.459	ug/l	91
52) Toluene	8.720	92	83205	24.873	ug/l	98
67) Ethyl Benzene	10.195	91	12621	1.977	ug/l	99
68) m/p-Xylenes	10.299	106	15651	6.301	ug/l	99
69) o-Xylene	10.640	106	6716	2.735	ug/l	97

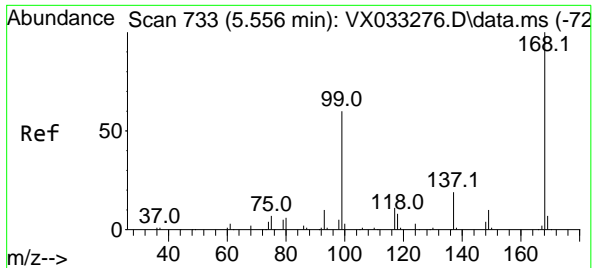
(#) = qualifier out of range (m) = manual integration (+) = signals summed

Data Path : Z:\voasrv\HPCHEM1\MSVOA_X\Data\VX122022\
 Data File : VX033505.D
 Acq On : 20 Dec 2022 14:08
 Operator : JC/MD
 Sample : N6149-04 100X
 Misc : 5.0mL/MSVOA_X/WATER
 ALS Vial : 9 Sample Multiplier: 1

Instrument :
 MSVOA_X
 ClientSampleId :
 RING-1

Quant Time: Dec 21 04:14:24 2022
 Quant Method : Z:\voasrv\HPCHEM1\MSVOA_X\Method\82X120722W.M
 Quant Title : SW846 8260
 QLast Update : Wed Dec 07 12:43:54 2022
 Response via : Initial Calibration

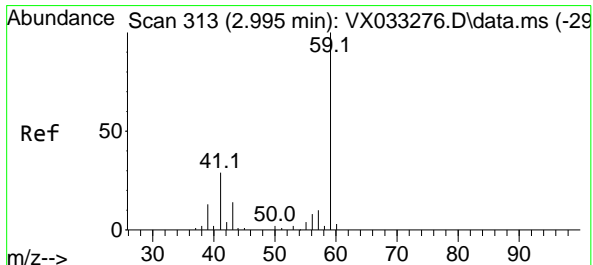
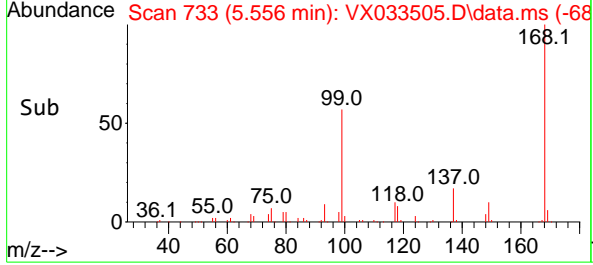
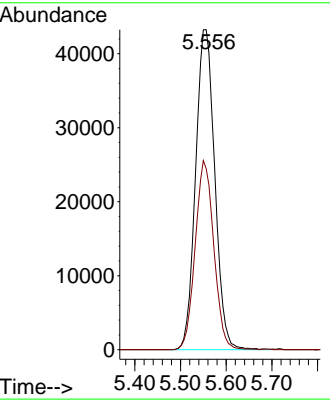
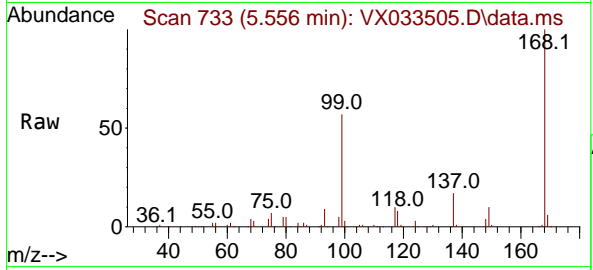




#1
 Pentafluorobenzene
 Concen: 50.000 ug/l
 RT: 5.556 min Scan# 71
 Delta R.T. -0.000 min
 Lab File: VX033505.D
 Acq: 20 Dec 2022 14:08

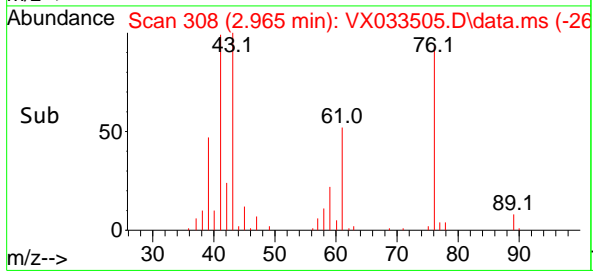
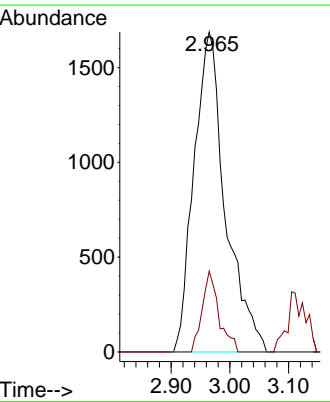
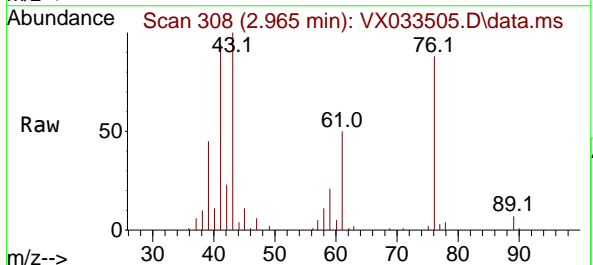
Instrument : MSVOA_X
 ClientSampleId : RING-1

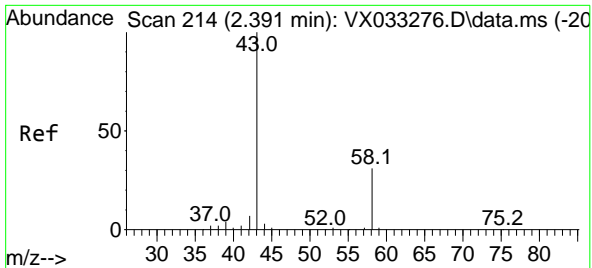
Tgt Ion:168 Resp: 126152
 Ion Ratio Lower Upper
 168 100
 99 56.5 46.1 69.1



#11
 Tert butyl alcohol
 Concen: 25.288 ug/l
 RT: 2.965 min Scan# 308
 Delta R.T. -0.030 min
 Lab File: VX033505.D
 Acq: 20 Dec 2022 14:08

Tgt Ion: 59 Resp: 6257
 Ion Ratio Lower Upper
 59 100
 57 13.5 8.2 12.4#

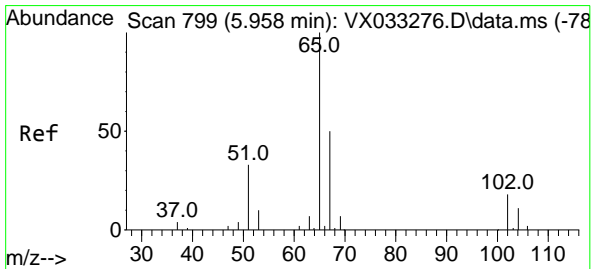
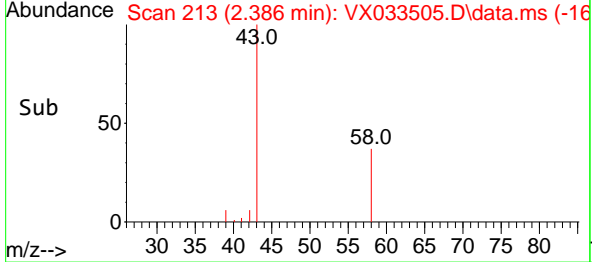
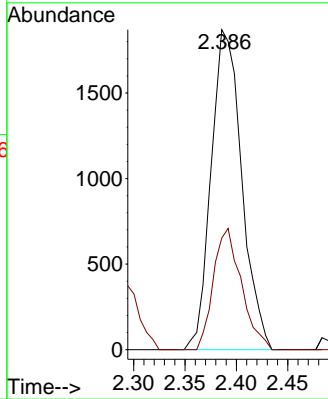
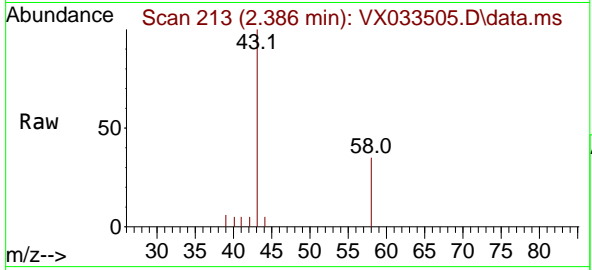




#16
 Acetone
 Concen: 6.459 ug/l
 RT: 2.386 min Scan# 214
 Delta R.T. -0.006 min
 Lab File: VX033505.D
 Acq: 20 Dec 2022 14:08

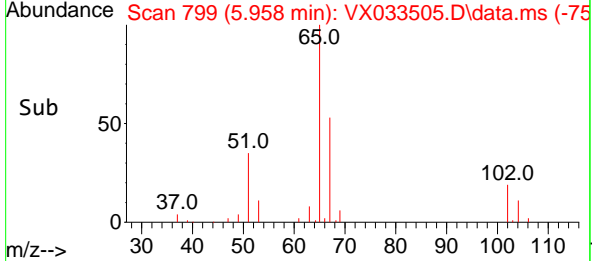
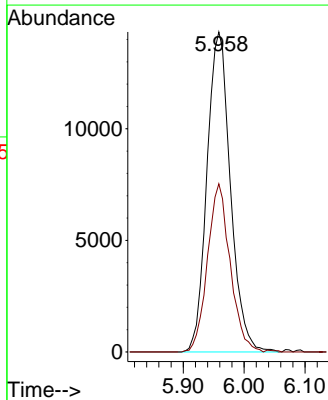
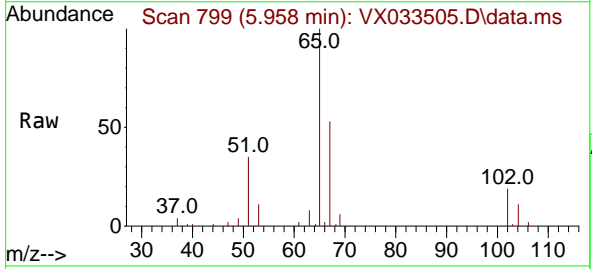
Instrument : MSVOA_X
 ClientSampleId : RING-1

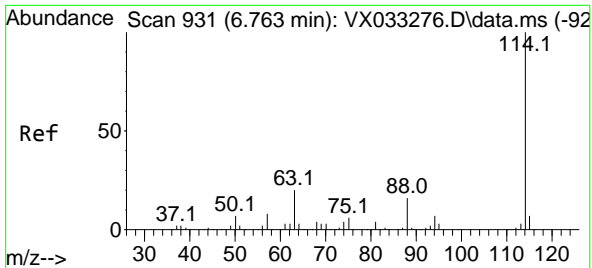
Tgt Ion: 43 Resp: 3868
 Ion Ratio Lower Upper
 43 100
 58 34.9 23.8 35.8



#33
 1,2-Dichloroethane-d4
 Concen: 47.365 ug/l
 RT: 5.958 min Scan# 799
 Delta R.T. 0.000 min
 Lab File: VX033505.D
 Acq: 20 Dec 2022 14:08

Tgt Ion: 65 Resp: 38333
 Ion Ratio Lower Upper
 65 100
 67 50.8 0.0 101.8



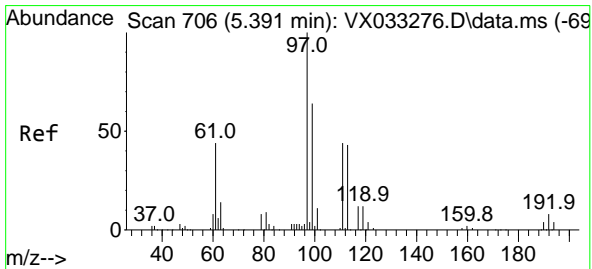
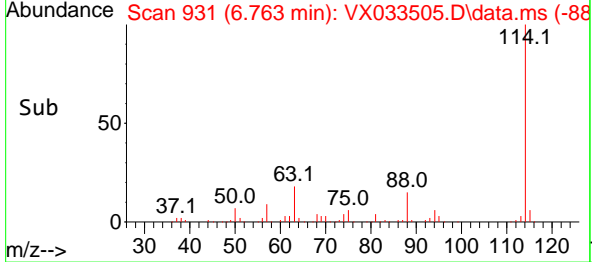
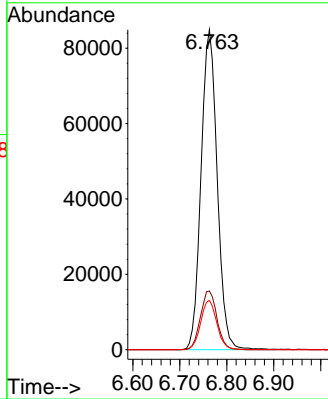
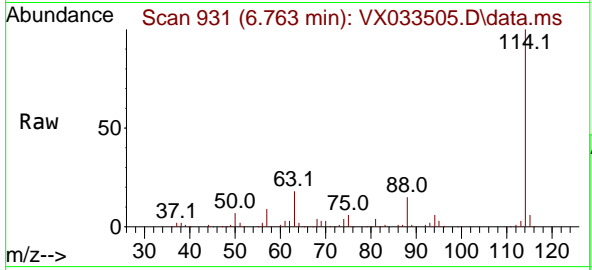


#34
 1,4-Difluorobenzene
 Concen: 50.000 ug/l
 RT: 6.763 min Scan# 91
 Delta R.T. 0.000 min
 Lab File: VX033505.D
 Acq: 20 Dec 2022 14:08

Instrument :
 MSVOA_X
 ClientSampleId :
 RING-1

Tgt Ion:114 Resp: 202358

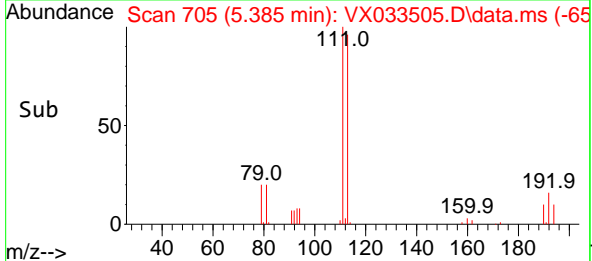
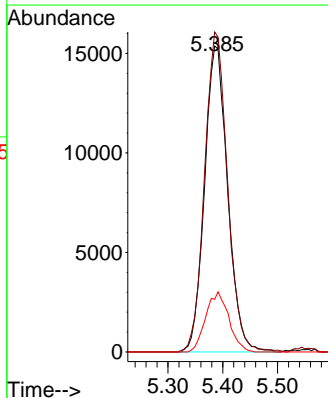
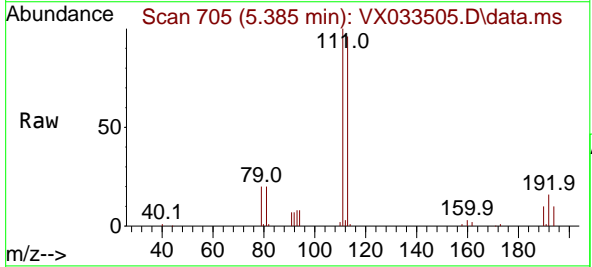
Ion	Ratio	Lower	Upper
114	100		
63	18.4	0.0	41.6
88	15.4	0.0	33.4

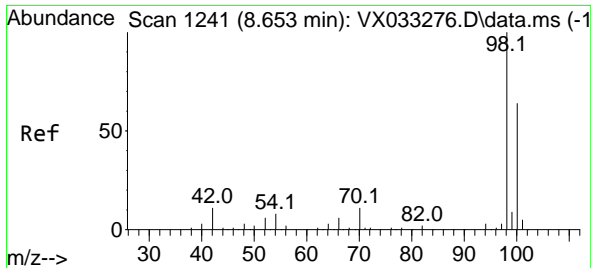


#35
 Dibromofluoromethane
 Concen: 49.373 ug/l
 RT: 5.385 min Scan# 705
 Delta R.T. -0.006 min
 Lab File: VX033505.D
 Acq: 20 Dec 2022 14:08

Tgt Ion:113 Resp: 44938

Ion	Ratio	Lower	Upper
113	100		
111	103.9	82.4	123.6
192	19.7	15.4	23.2

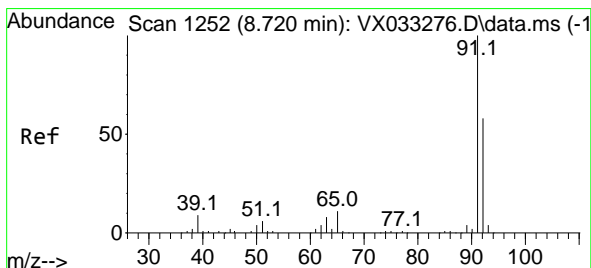
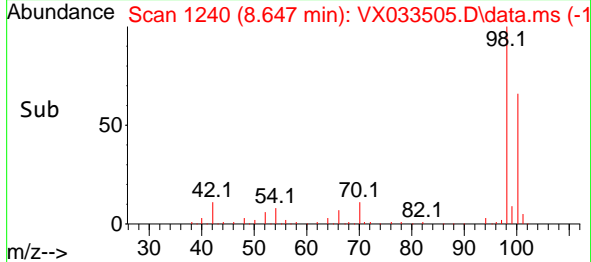
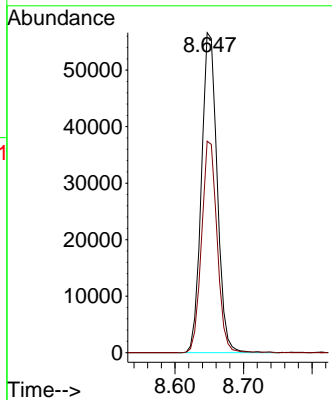
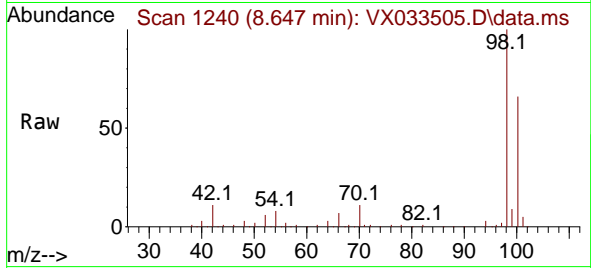




#50
 Toluene-d8
 Concen: 47.510 ug/l
 RT: 8.647 min Scan# 11
 Delta R.T. -0.006 min
 Lab File: VX033505.D
 Acq: 20 Dec 2022 14:08

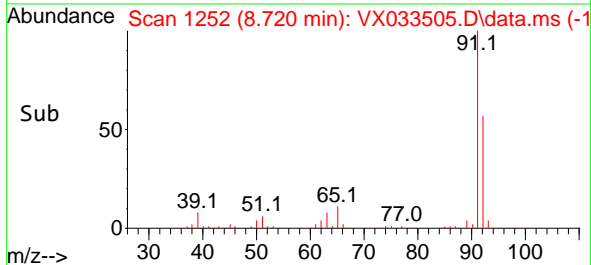
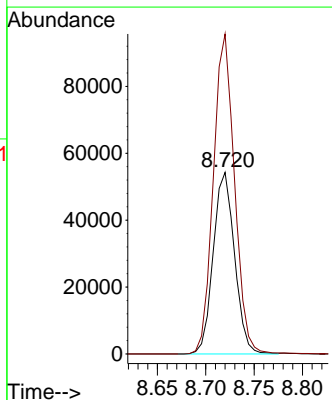
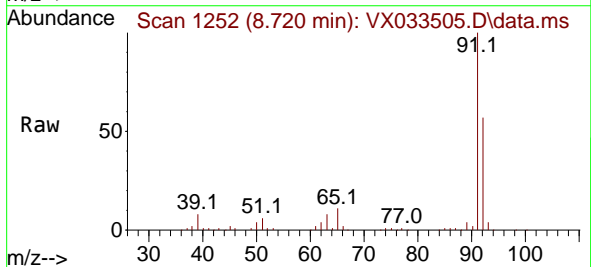
Instrument :
 MSVOA_X
 ClientSampleId :
 RING-1

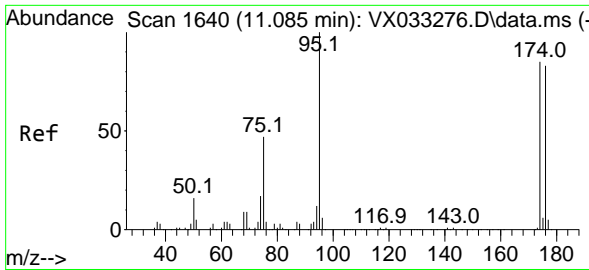
Tgt Ion: 98 Resp: 90460
 Ion Ratio Lower Upper
 98 100
 100 65.3 50.9 76.3



#52
 Toluene
 Concen: 24.873 ug/l
 RT: 8.720 min Scan# 1252
 Delta R.T. 0.000 min
 Lab File: VX033505.D
 Acq: 20 Dec 2022 14:08

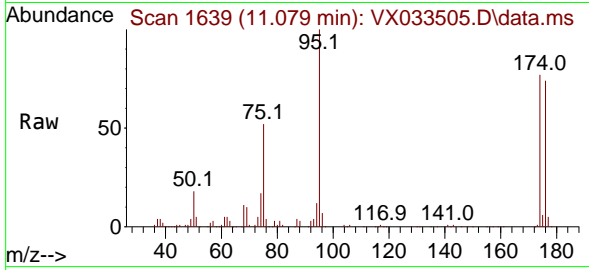
Tgt Ion: 92 Resp: 83205
 Ion Ratio Lower Upper
 92 100
 91 175.1 138.3 207.5



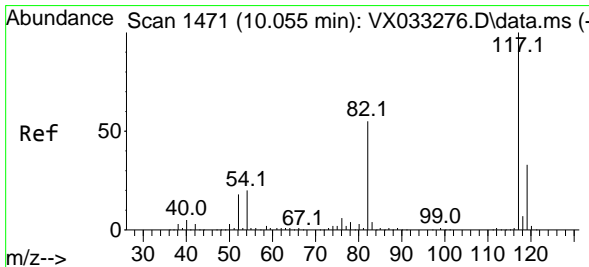
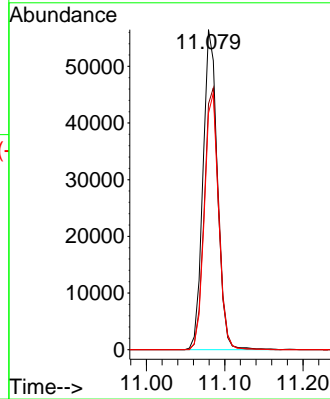
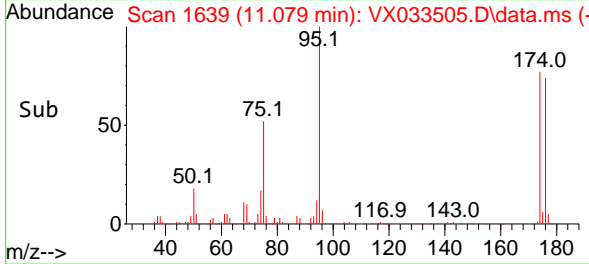


#62
 4-Bromofluorobenzene
 Concen: 49.505 ug/l
 RT: 11.079 min Scan# 1639
 Delta R.T. -0.006 min
 Lab File: VX033505.D
 Acq: 20 Dec 2022 14:08

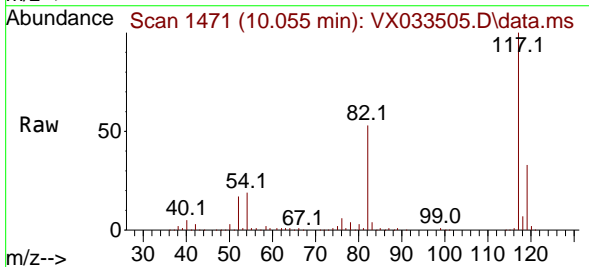
Instrument :
 MSVOA_X
 ClientSampleId :
 RING-1



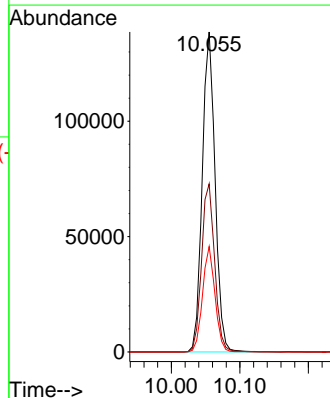
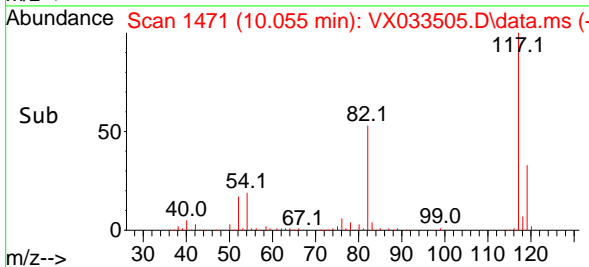
Tgt Ion: 95 Resp: 72072
 Ion Ratio Lower Upper
 95 100
 174 82.6 0.0 164.0
 176 79.0 0.0 154.4

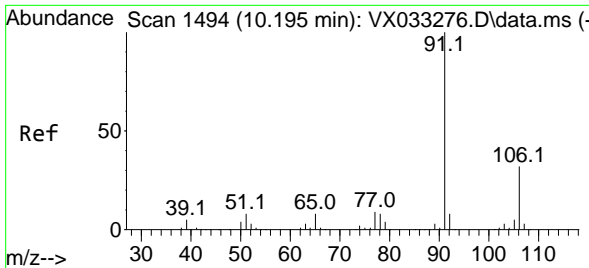


#63
 Chlorobenzene-d5
 Concen: 50.000 ug/l
 RT: 10.055 min Scan# 1471
 Delta R.T. 0.000 min
 Lab File: VX033505.D
 Acq: 20 Dec 2022 14:08



Tgt Ion: 117 Resp: 180972
 Ion Ratio Lower Upper
 117 100
 82 52.5 44.3 66.5
 119 33.0 25.7 38.5

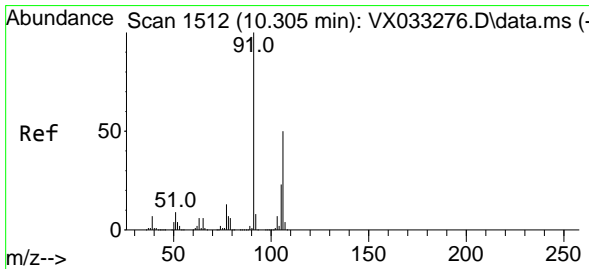
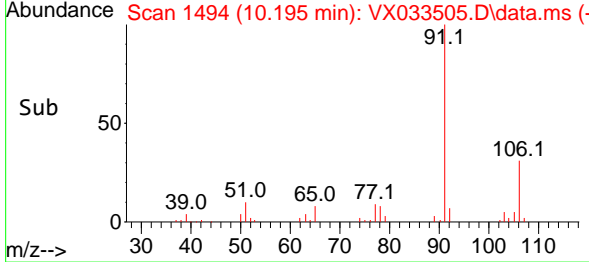
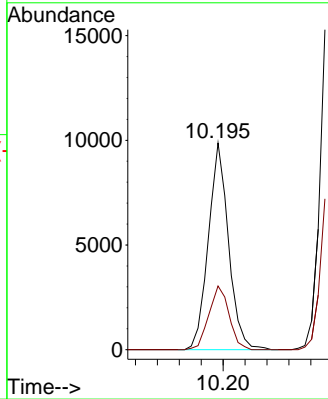
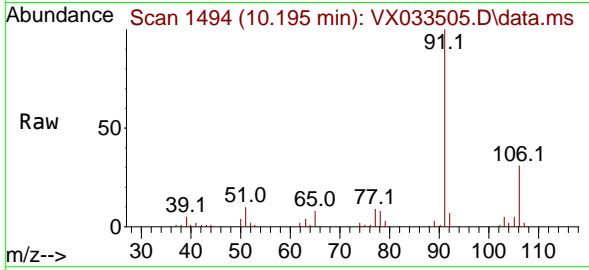




#67
 Ethyl Benzene
 Concen: 1.977 ug/l
 RT: 10.195 min Scan# 14
 Delta R.T. 0.000 min
 Lab File: VX033505.D
 Acq: 20 Dec 2022 14:08

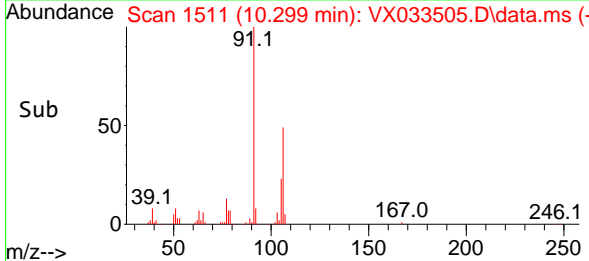
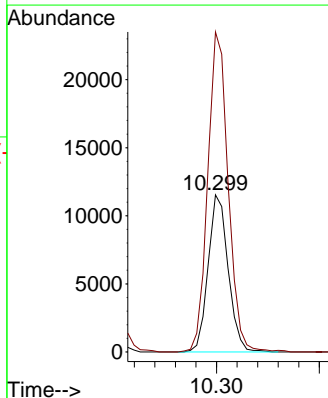
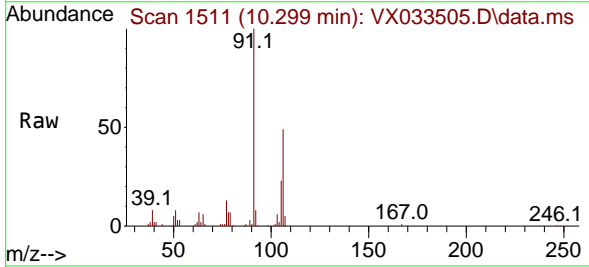
Instrument :
 MSVOA_X
 ClientSampleId :
 RING-1

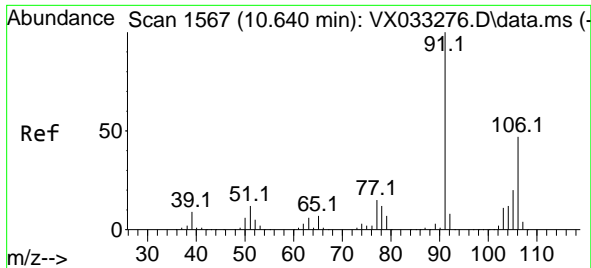
Tgt Ion: 91 Resp: 12621
 Ion Ratio Lower Upper
 91 100
 106 30.8 25.0 37.6



#68
 m/p-Xylenes
 Concen: 6.301 ug/l
 RT: 10.299 min Scan# 1511
 Delta R.T. -0.006 min
 Lab File: VX033505.D
 Acq: 20 Dec 2022 14:08

Tgt Ion: 106 Resp: 15651
 Ion Ratio Lower Upper
 106 100
 91 207.7 164.5 246.7

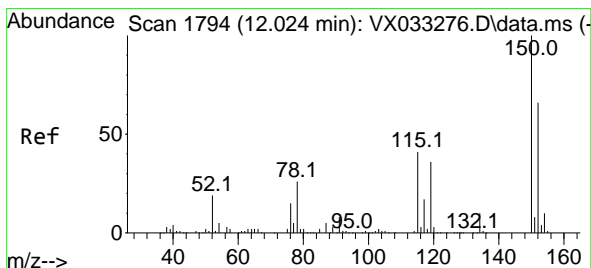
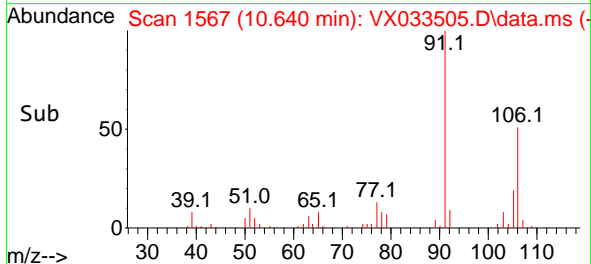
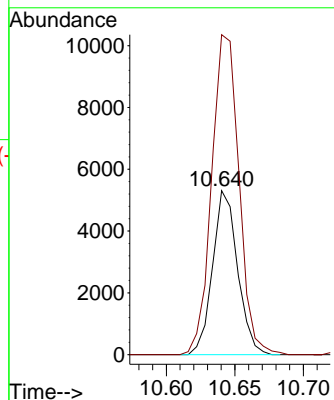
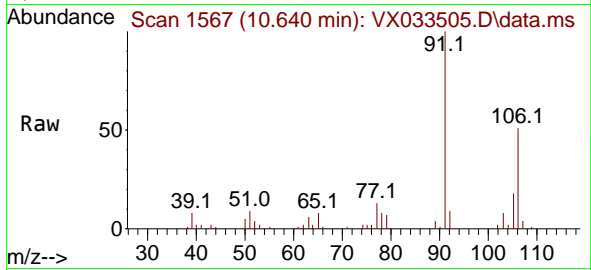




#69
 o-Xylene
 Concen: 2.735 ug/l
 RT: 10.640 min Scan# 11
 Delta R.T. 0.000 min
 Lab File: VX033505.D
 Acq: 20 Dec 2022 14:08

Instrument :
 MSVOA_X
 ClientSampleId :
 RING-1

Tgt Ion:106 Resp: 6716
 Ion Ratio Lower Upper
 106 100
 91 214.0 109.2 327.6



#72
 1,4-Dichlorobenzene-d4
 Concen: 50.000 ug/l
 RT: 12.024 min Scan# 1794
 Delta R.T. 0.000 min
 Lab File: VX033505.D
 Acq: 20 Dec 2022 14:08

Tgt Ion:152 Resp: 87790
 Ion Ratio Lower Upper
 152 100
 115 59.5 44.0 132.0
 150 157.6 0.0 351.8

