

Data Path : Z:\voasrv\HPCHEM1\MSVOA_X\Data\VX122022\
 Data File : VX033519.D
 Acq On : 20 Dec 2022 19:30
 Operator : JC/MD
 Sample : N6149-05
 Misc : 5.0mL/MSVOA_X/WATER
 ALS Vial : 23 Sample Multiplier: 1

Instrument :
 MSVOA_X
 ClientSampleId :
 WEST-1

Quant Time: Dec 21 04:17:18 2022
 Quant Method : Z:\voasrv\HPCHEM1\MSVOA_X\Method\82X120722W.M
 Quant Title : SW846 8260
 QLast Update : Wed Dec 07 12:43:54 2022
 Response via : Initial Calibration

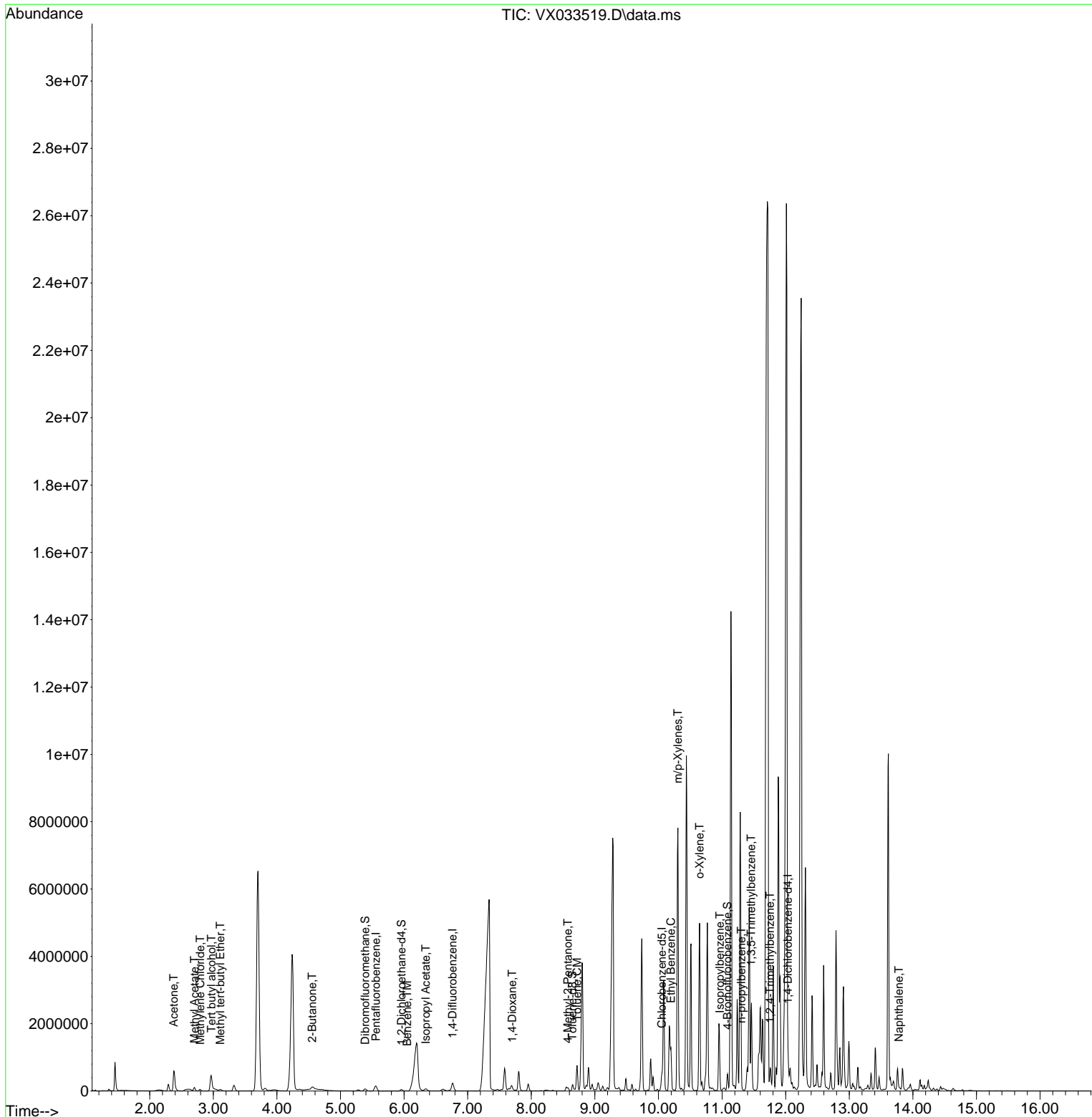
Compound	R.T.	QIon	Response	Conc	Units	Dev(Min)
Internal Standards						
1) Pentafluorobenzene	5.556	168	155773	50.000	ug/l	0.00
34) 1,4-Difluorobenzene	6.763	114	253073	50.000	ug/l	0.00
63) Chlorobenzene-d5	10.055	117	224893	50.000	ug/l	0.00
72) 1,4-Dichlorobenzene-d4	12.036	152	120289	50.000	ug/l	0.01
System Monitoring Compounds						
33) 1,2-Dichloroethane-d4	5.958	65	43705	43.734	ug/l	0.00
Spiked Amount	50.000	Range 78 - 117	Recovery	=	87.460%	
35) Dibromofluoromethane	5.385	113	56955	50.036	ug/l	0.00
Spiked Amount	50.000	Range 75 - 124	Recovery	=	100.080%	
50) Toluene-d8	8.647	98	117511	49.349	ug/l	0.00
Spiked Amount	50.000	Range 92 - 112	Recovery	=	98.700%	
62) 4-Bromofluorobenzene	11.085	95	92367	50.731	ug/l	0.00
Spiked Amount	50.000	Range 83 - 123	Recovery	=	101.460%	
Target Compounds						
						Qvalue
11) Tert butyl alcohol	2.971	59	210968	690.499	ug/l #	94
16) Acetone	2.380	43	709831	959.902	ug/l	93
18) Methyl Acetate	2.703	43	120390	56.239	ug/l	96
19) Methyl tert-butyl Ether	3.111	73	42932	8.776	ug/l	97
20) Methylene Chloride	2.794	84	26898	16.310	ug/l #	81
25) 2-Butanone	4.556	43	146051	137.593	ug/l #	88
40) Benzene	6.050	78	6609	1.021	ug/l	92
43) Isopropyl Acetate	6.342	43	72905	21.599	ug/l	98
49) 1,4-Dioxane	7.702	88	7037	177.145	ug/l #	1
51) 4-Methyl-2-Pentanone	8.574	43	90049	42.186	ug/l #	83
52) Toluene	8.720	92	288717	69.012	ug/l	98
67) Ethyl Benzene	10.195	91	657569	82.881	ug/l	99
68) m/p-Xylenes	10.305	106	1930924	625.533	ug/l	92
69) o-Xylene	10.646	106	1114846	365.384	ug/l	93
73) Isopropylbenzene	10.963	105	16921	1.941	ug/l	99
78) n-propylbenzene	11.305	91	31670	3.253	ug/l	77
80) 1,3,5-Trimethylbenzene	11.457	105	41202	5.677	ug/l	100
84) 1,2,4-Trimethylbenzene	11.756	105	220384	30.421	ug/l	85
95) Naphthalene	13.780	128	45868	5.710	ug/l #	86

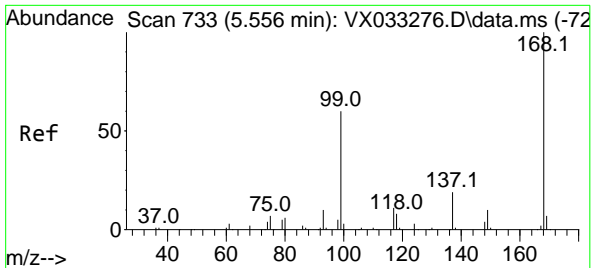
(#) = qualifier out of range (m) = manual integration (+) = signals summed

Data Path : Z:\voasrv\HPCHEM1\MSVOA_X\Data\VX122022\
 Data File : VX033519.D
 Acq On : 20 Dec 2022 19:30
 Operator : JC/MD
 Sample : N6149-05
 Misc : 5.0mL/MSVOA_X/WATER
 ALS Vial : 23 Sample Multiplier: 1

Instrument :
 MSVOA_X
 ClientSampleId :
 WEST-1

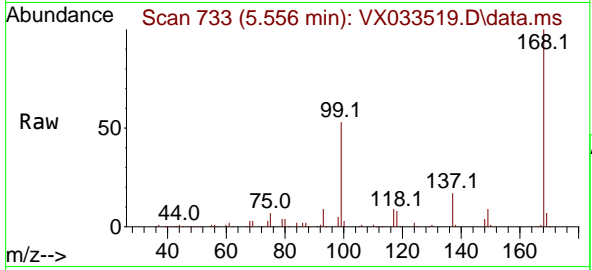
Quant Time: Dec 21 04:17:18 2022
 Quant Method : Z:\voasrv\HPCHEM1\MSVOA_X\Method\82X120722W.M
 Quant Title : SW846 8260
 QLast Update : Wed Dec 07 12:43:54 2022
 Response via : Initial Calibration



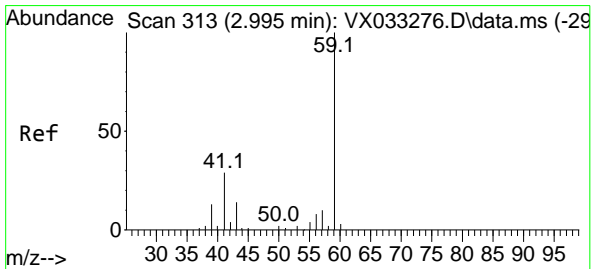
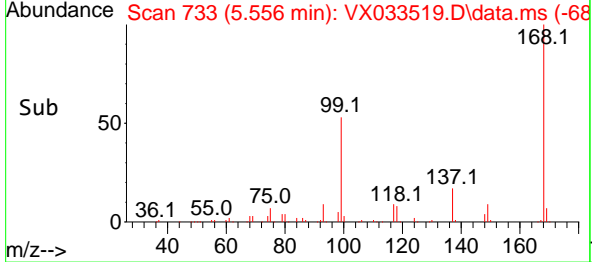
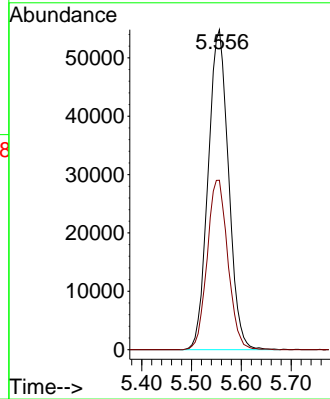


#1
 Pentafluorobenzene
 Concen: 50.000 ug/l
 RT: 5.556 min Scan# 71
 Delta R.T. -0.000 min
 Lab File: VX033519.D
 Acq: 20 Dec 2022 19:30

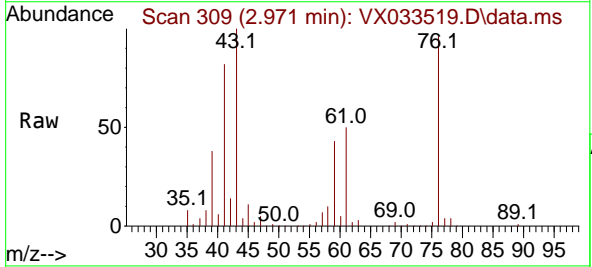
Instrument : MSVOA_X
 ClientSampleId : WEST-1



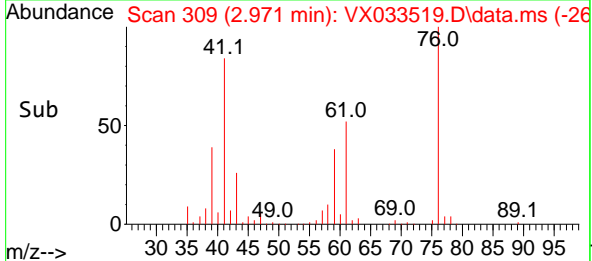
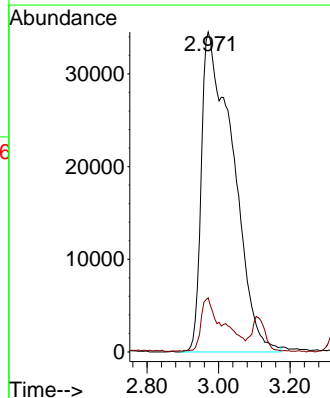
Tgt Ion:168 Resp: 155773
 Ion Ratio Lower Upper
 168 100
 99 53.0 46.1 69.1

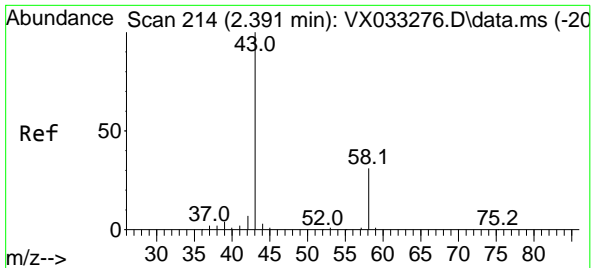


#11
 Tert butyl alcohol
 Concen: 690.499 ug/l
 RT: 2.971 min Scan# 309
 Delta R.T. -0.024 min
 Lab File: VX033519.D
 Acq: 20 Dec 2022 19:30



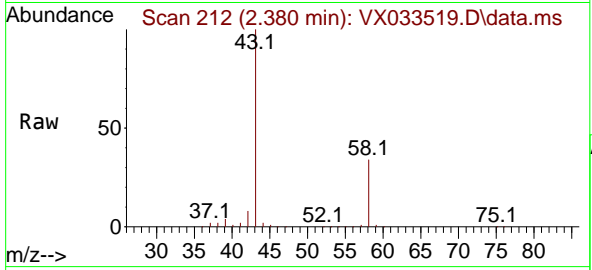
Tgt Ion: 59 Resp: 210968
 Ion Ratio Lower Upper
 59 100
 57 12.4 8.2 12.4#



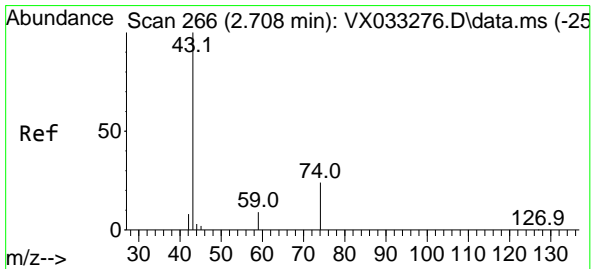
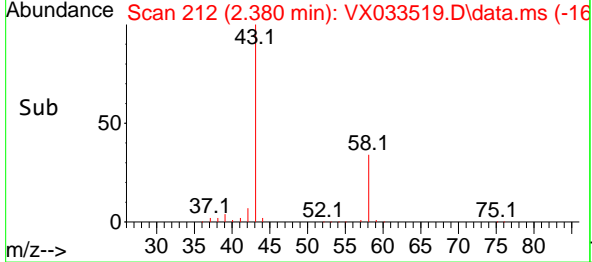
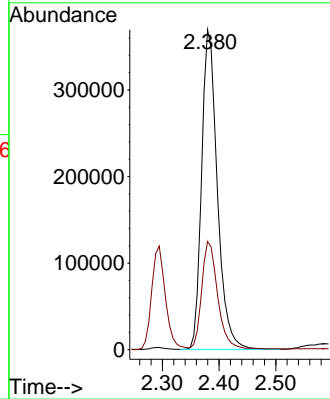


#16
 Acetone
 Concen: 959.902 ug/l
 RT: 2.380 min Scan# 214
 Delta R.T. -0.012 min
 Lab File: VX033519.D
 Acq: 20 Dec 2022 19:30

Instrument : MSVOA_X
 ClientSampleId : WEST-1

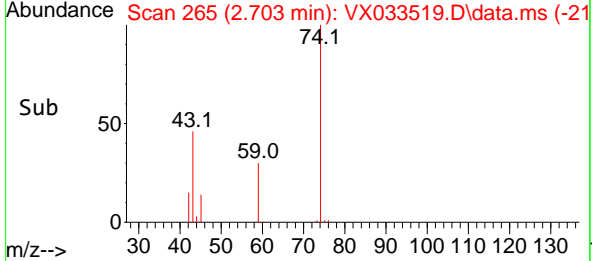
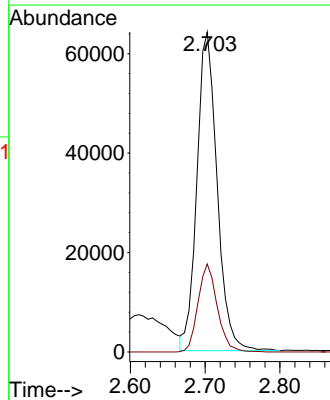
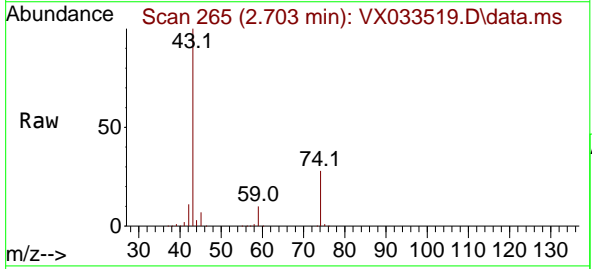


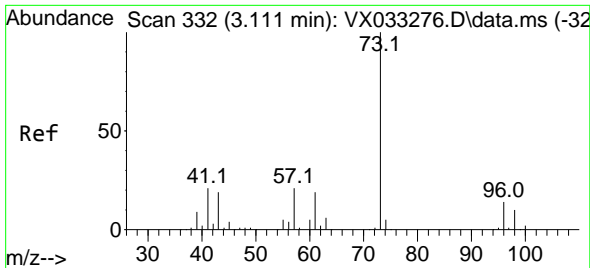
Tgt Ion: 43 Resp: 709831
 Ion Ratio Lower Upper
 43 100
 58 33.6 23.8 35.8



#18
 Methyl Acetate
 Concen: 56.239 ug/l
 RT: 2.703 min Scan# 265
 Delta R.T. -0.006 min
 Lab File: VX033519.D
 Acq: 20 Dec 2022 19:30

Tgt Ion: 43 Resp: 120390
 Ion Ratio Lower Upper
 43 100
 74 26.2 19.4 29.0

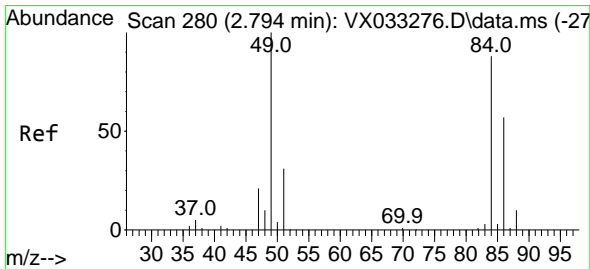
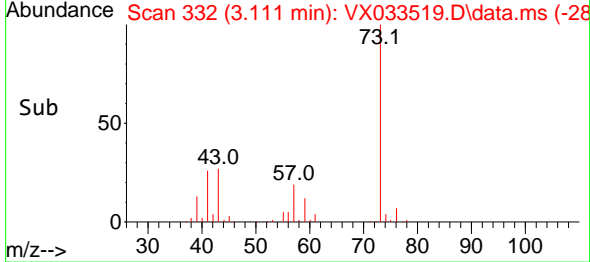
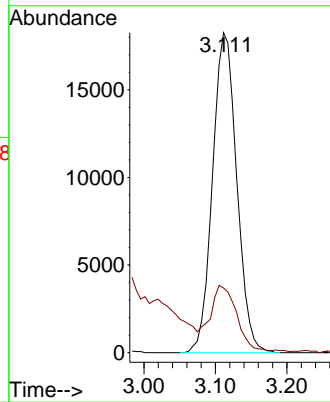
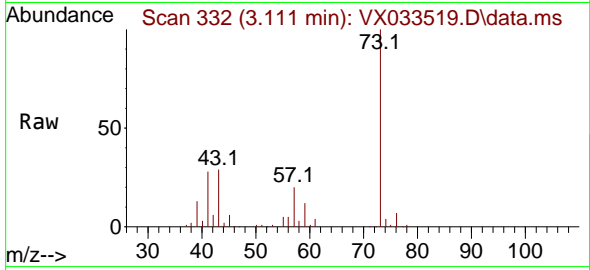




#19
 Methyl tert-butyl Ether
 Concen: 8.776 ug/l
 RT: 3.111 min Scan# 311
 Delta R.T. 0.000 min
 Lab File: VX033519.D
 Acq: 20 Dec 2022 19:30

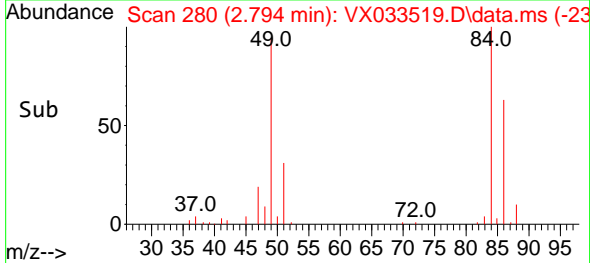
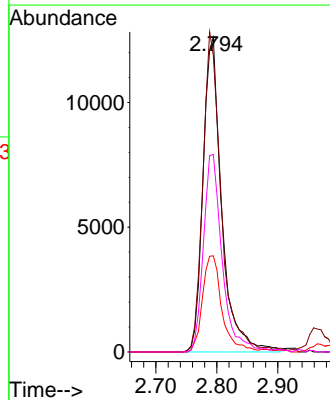
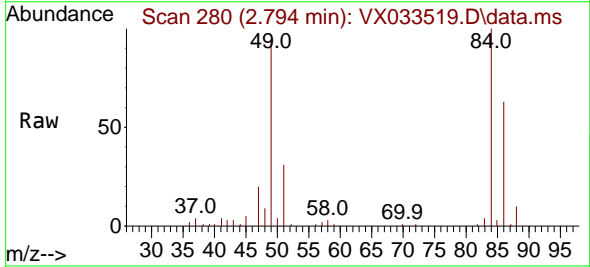
Instrument : MSVOA_X
 ClientSampleId : WEST-1

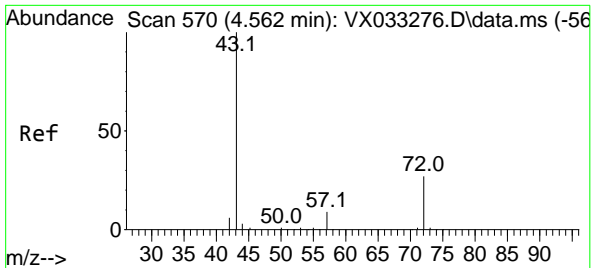
Tgt Ion: 73 Resp: 42932
 Ion Ratio Lower Upper
 73 100
 57 19.6 16.6 25.0



#20
 Methylene Chloride
 Concen: 16.310 ug/l
 RT: 2.794 min Scan# 280
 Delta R.T. 0.000 min
 Lab File: VX033519.D
 Acq: 20 Dec 2022 19:30

Tgt Ion: 84 Resp: 26898
 Ion Ratio Lower Upper
 84 100
 49 94.3 101.0 151.6#
 51 30.6 31.1 46.7#
 86 62.8 52.3 78.5

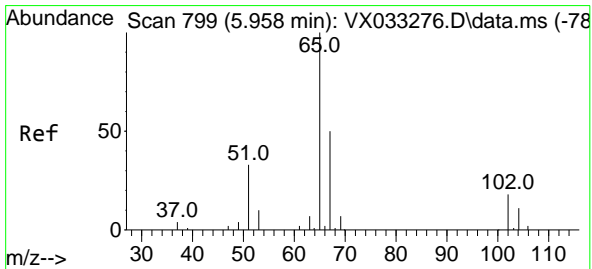
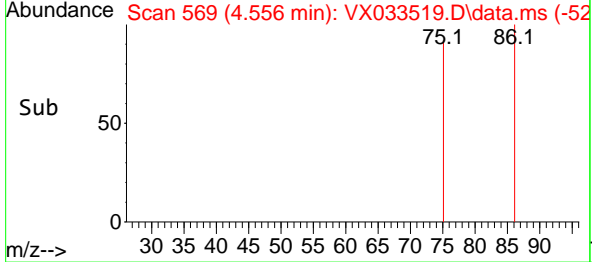
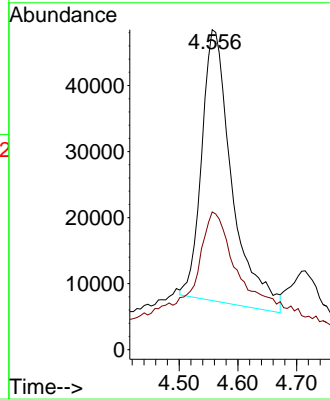
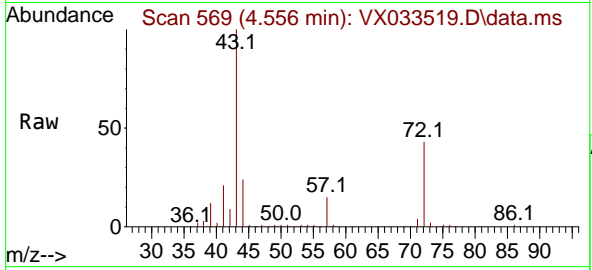




#25
 2-Butanone
 Concen: 137.593 ug/l
 RT: 4.556 min Scan# 509
 Delta R.T. -0.006 min
 Lab File: VX033519.D
 Acq: 20 Dec 2022 19:30

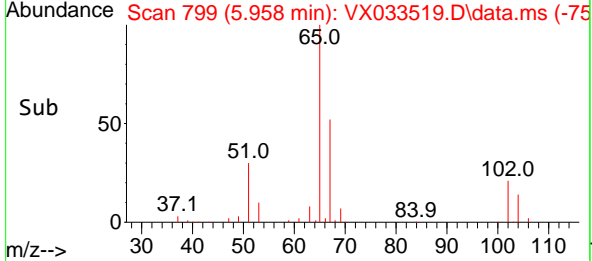
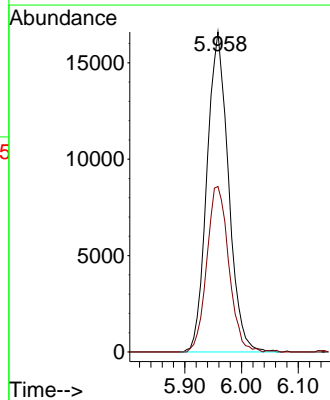
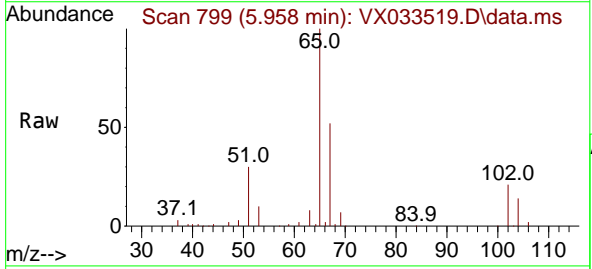
Instrument : MSVOA_X
 ClientSampleId : WEST-1

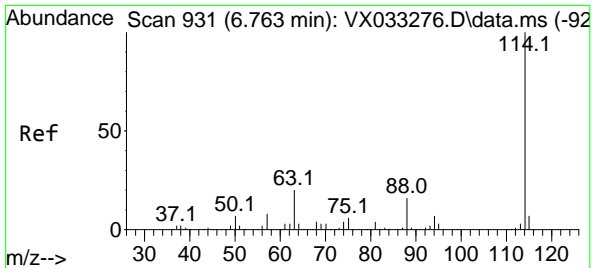
Tgt Ion: 43 Resp: 146051
 Ion Ratio Lower Upper
 43 100
 72 33.9 22.2 33.2#



#33
 1,2-Dichloroethane-d4
 Concen: 43.734 ug/l
 RT: 5.958 min Scan# 799
 Delta R.T. 0.000 min
 Lab File: VX033519.D
 Acq: 20 Dec 2022 19:30

Tgt Ion: 65 Resp: 43705
 Ion Ratio Lower Upper
 65 100
 67 52.9 0.0 101.8

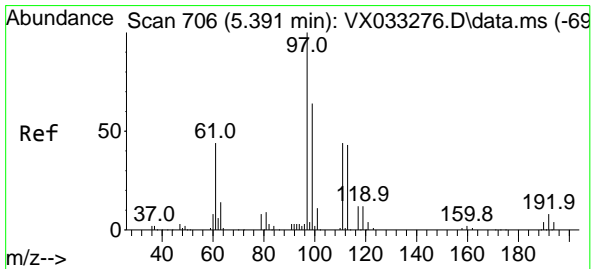
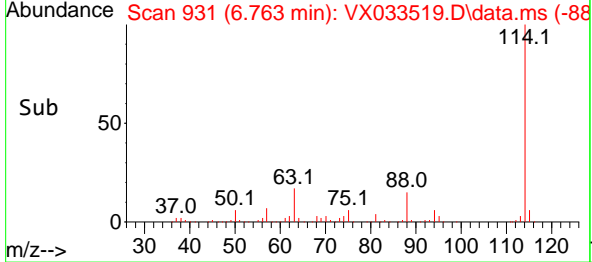
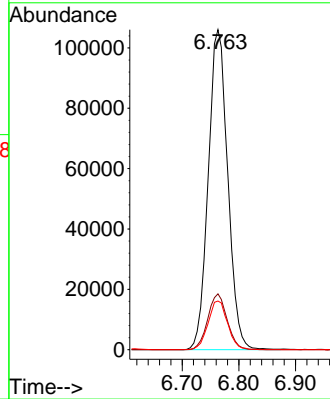
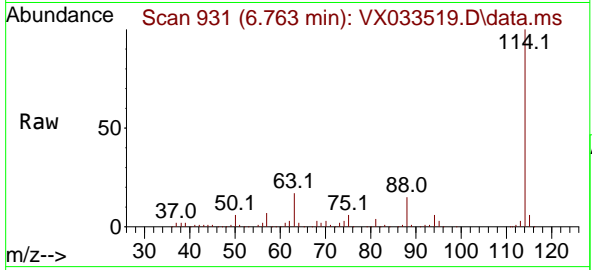




#34
 1,4-Difluorobenzene
 Concen: 50.000 ug/l
 RT: 6.763 min Scan# 91
 Delta R.T. 0.000 min
 Lab File: VX033519.D
 Acq: 20 Dec 2022 19:30

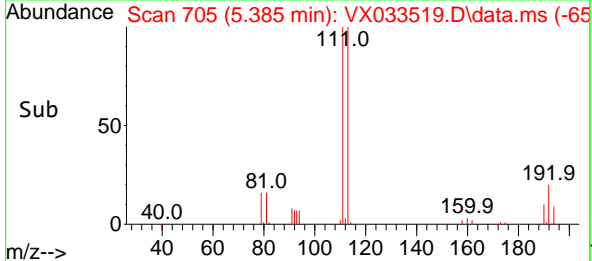
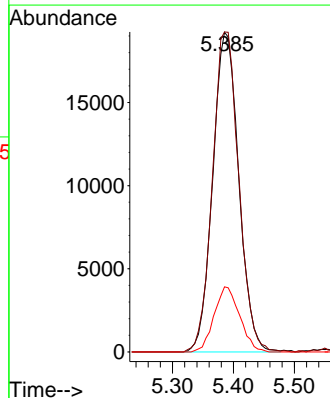
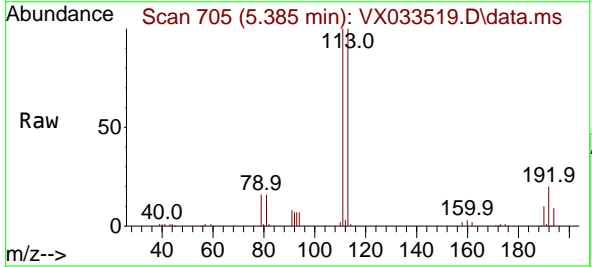
Instrument :
 MSVOA_X
 ClientSampleId :
 WEST-1

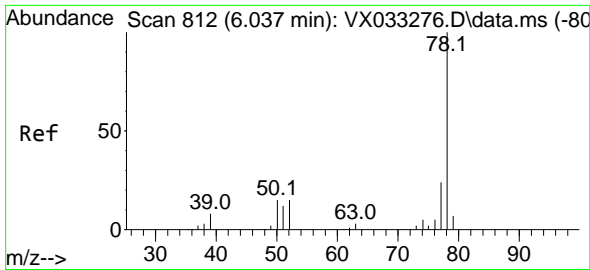
Tgt Ion	Resp	Lower	Upper
114	100		
63	17.4	0.0	41.6
88	15.2	0.0	33.4



#35
 Dibromofluoromethane
 Concen: 50.036 ug/l
 RT: 5.385 min Scan# 705
 Delta R.T. -0.006 min
 Lab File: VX033519.D
 Acq: 20 Dec 2022 19:30

Tgt Ion	Resp	Lower	Upper
113	100		
111	101.3	82.4	123.6
192	20.0	15.4	23.2

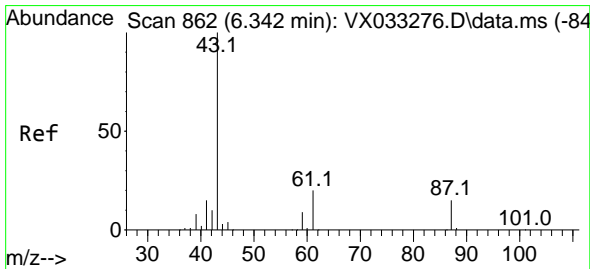
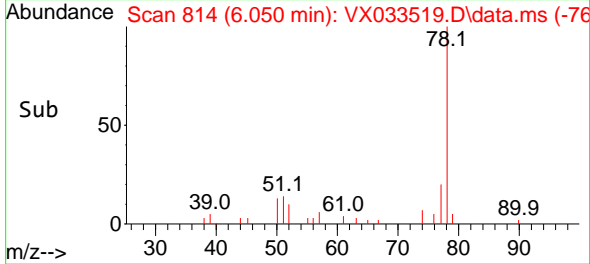
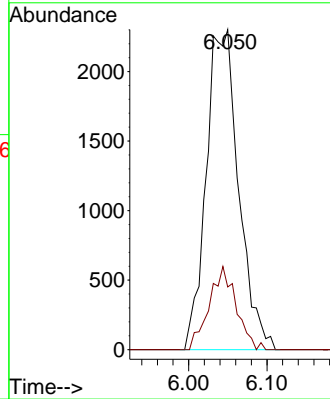
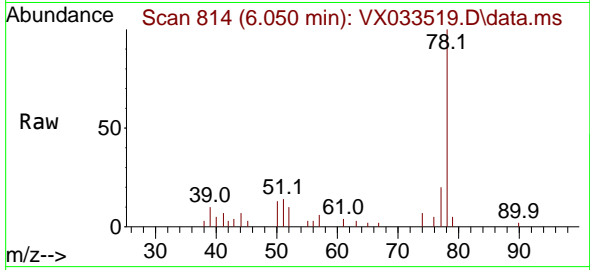




#40
Benzene
Concen: 1.021 ug/l
RT: 6.050 min Scan# 814
Delta R.T. 0.013 min
Lab File: VX033519.D
Acq: 20 Dec 2022 19:30

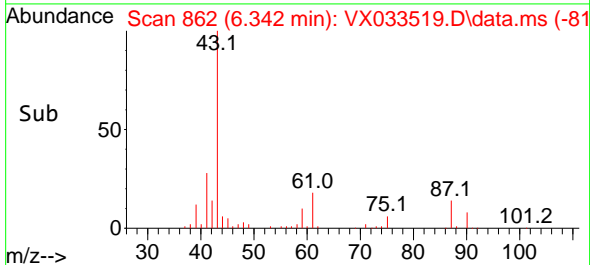
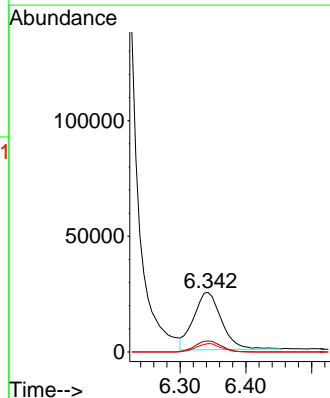
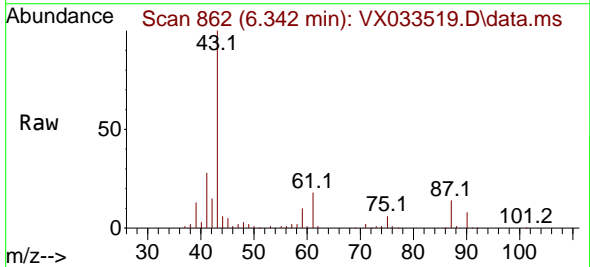
Instrument : MSVOA_X
ClientSampleId : WEST-1

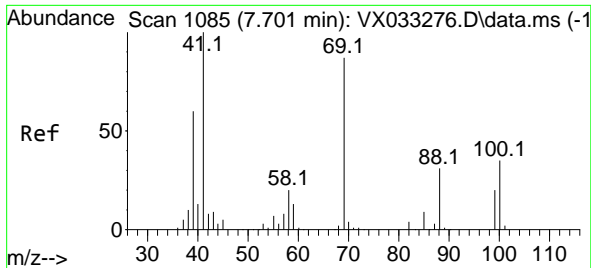
Tgt Ion: 78 Resp: 6609
Ion Ratio Lower Upper
78 100
77 19.6 19.0 28.4



#43
Isopropyl Acetate
Concen: 21.599 ug/l
RT: 6.342 min Scan# 862
Delta R.T. 0.000 min
Lab File: VX033519.D
Acq: 20 Dec 2022 19:30

Tgt Ion: 43 Resp: 72905
Ion Ratio Lower Upper
43 100
61 18.1 15.4 23.0
87 12.8 10.8 16.2



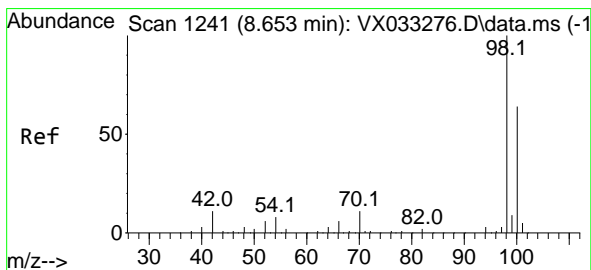
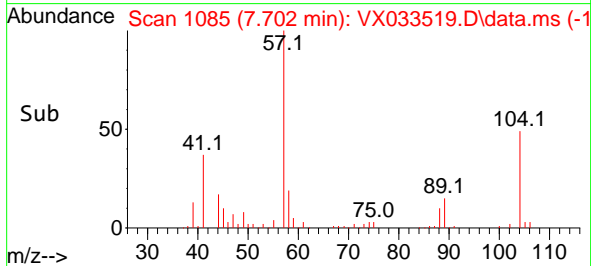
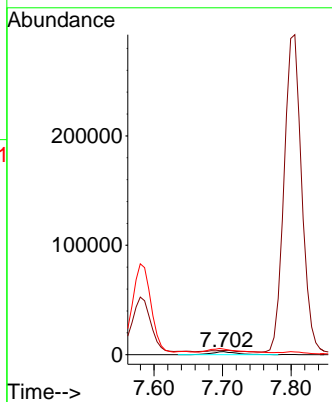
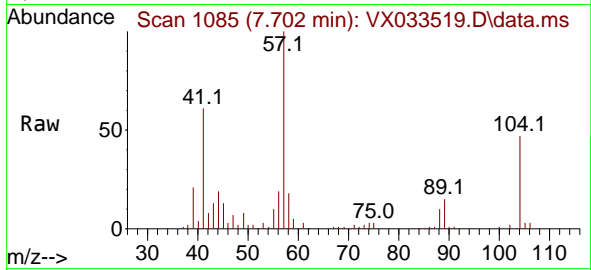


#49
 1,4-Dioxane
 Concen: 177.145 ug/l
 RT: 7.702 min Scan# 1085
 Delta R.T. 0.000 min
 Lab File: VX033519.D
 Acq: 20 Dec 2022 19:30

Instrument : MSVOA_X
 ClientSampleId : WEST-1

Tgt Ion: 88 Resp: 7037

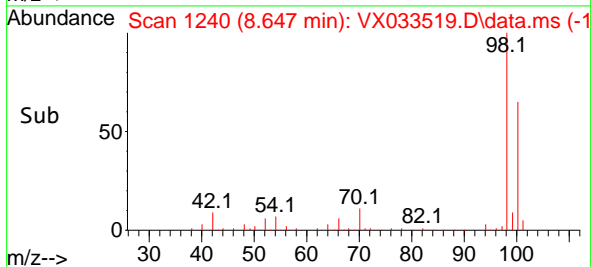
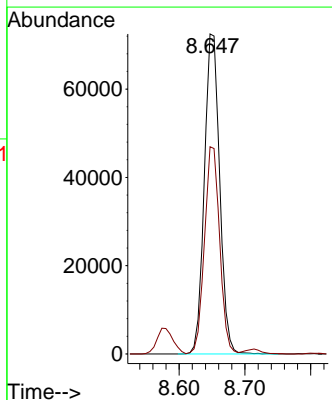
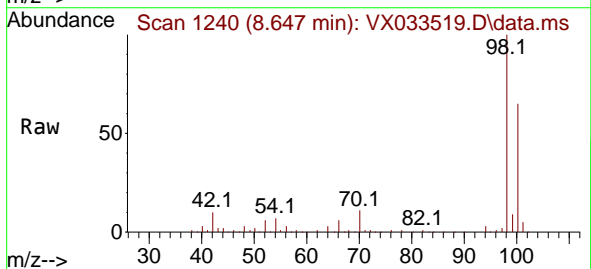
Ion	Ratio	Lower	Upper
88	100		
43	0.0	26.6	39.8#
58	162.9	51.7	77.5#

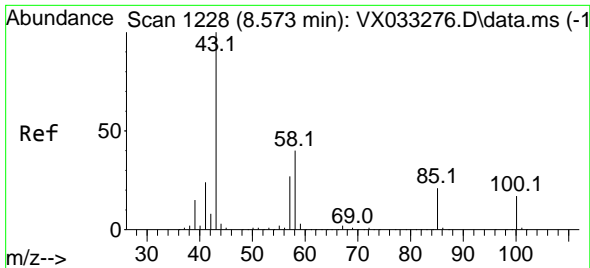


#50
 Toluene-d8
 Concen: 49.349 ug/l
 RT: 8.647 min Scan# 1240
 Delta R.T. -0.006 min
 Lab File: VX033519.D
 Acq: 20 Dec 2022 19:30

Tgt Ion: 98 Resp: 117511

Ion	Ratio	Lower	Upper
98	100		
100	64.1	50.9	76.3

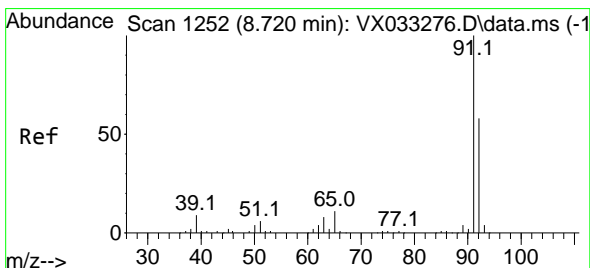
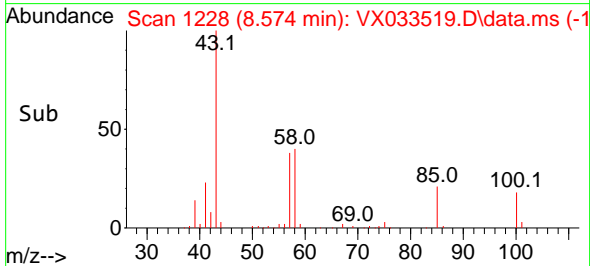
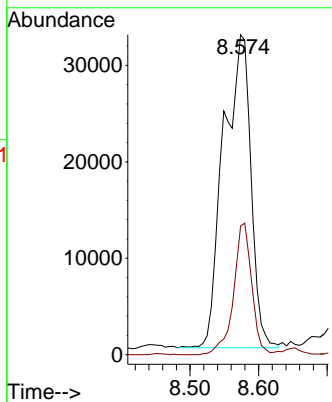
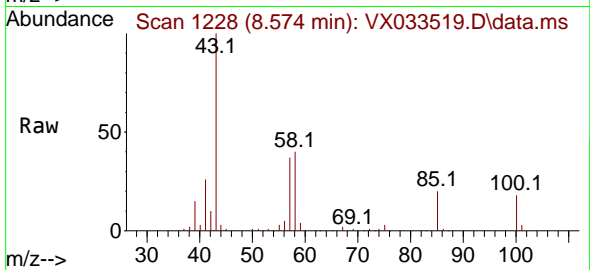




#51
 4-Methyl-2-Pentanone
 Concen: 42.186 ug/l
 RT: 8.574 min Scan# 11
 Delta R.T. 0.000 min
 Lab File: VX033519.D
 Acq: 20 Dec 2022 19:30

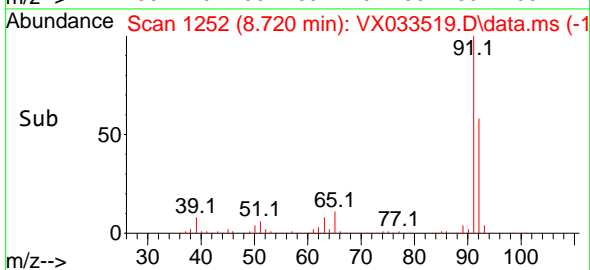
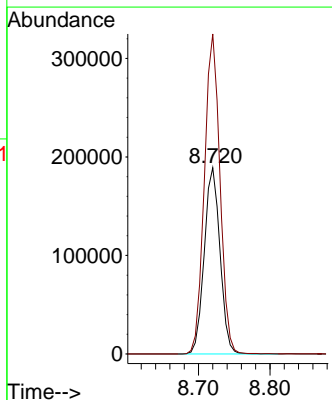
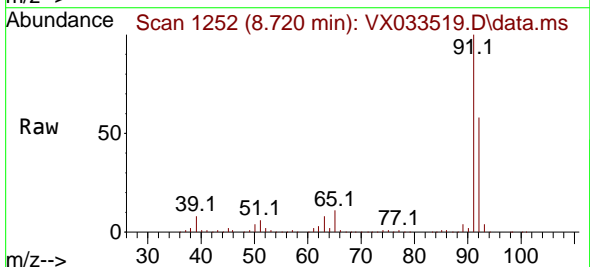
Instrument :
 MSVOA_X
 ClientSampleId :
 WEST-1

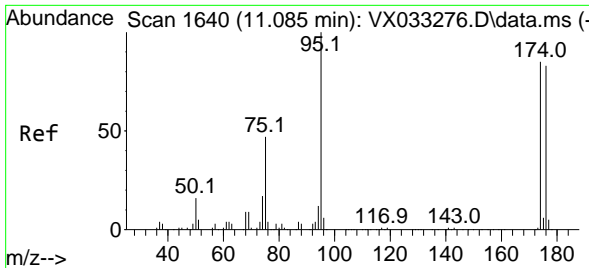
Tgt Ion: 43 Resp: 90049
 Ion Ratio Lower Upper
 43 100
 58 28.0 30.9 46.3#



#52
 Toluene
 Concen: 69.012 ug/l
 RT: 8.720 min Scan# 1252
 Delta R.T. 0.000 min
 Lab File: VX033519.D
 Acq: 20 Dec 2022 19:30

Tgt Ion: 92 Resp: 288717
 Ion Ratio Lower Upper
 92 100
 91 170.5 138.3 207.5



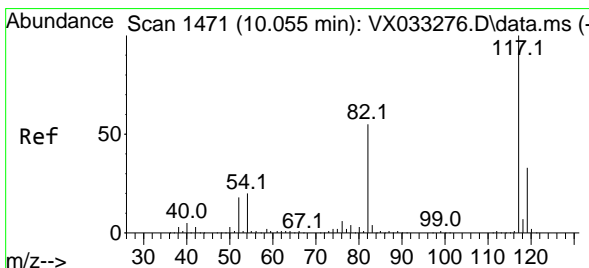
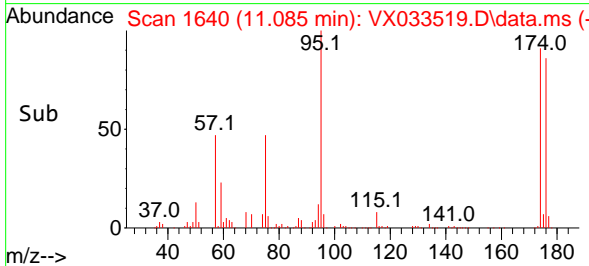
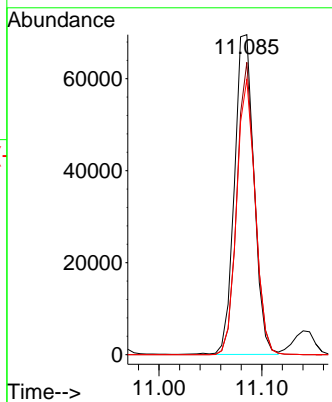
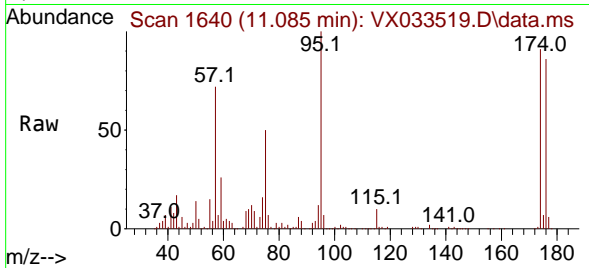


#62
 4-Bromofluorobenzene
 Concen: 50.731 ug/l
 RT: 11.085 min Scan# 1
 Delta R.T. 0.000 min
 Lab File: VX033519.D
 Acq: 20 Dec 2022 19:30

Instrument :
 MSVOA_X
 ClientSampleId :
 WEST-1

Tgt Ion: 95 Resp: 92367

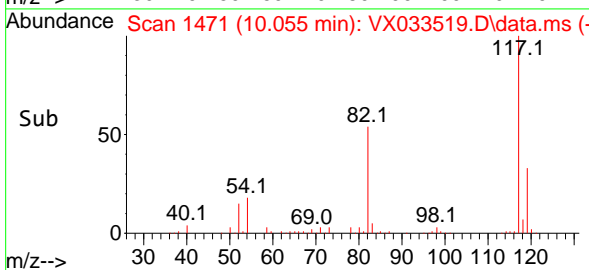
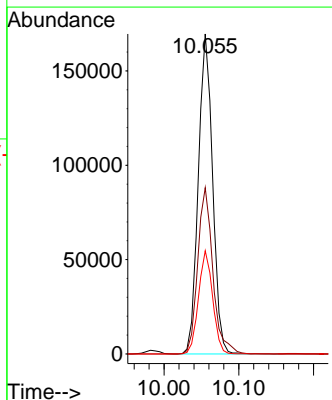
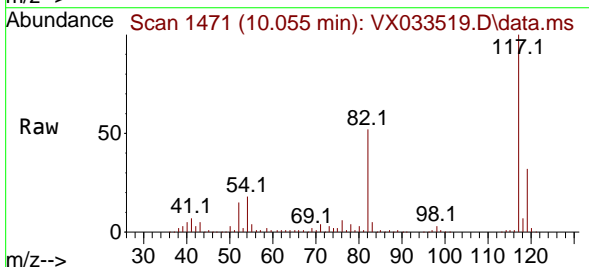
Ion	Ratio	Lower	Upper
95	100		
174	84.2	0.0	164.0
176	81.8	0.0	154.4

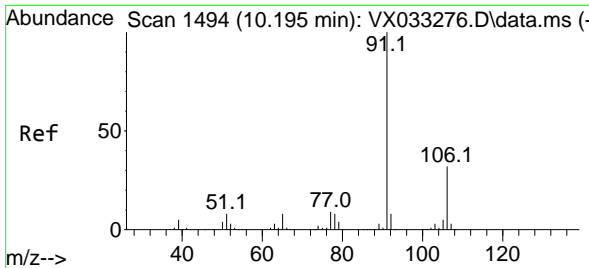


#63
 Chlorobenzene-d5
 Concen: 50.000 ug/l
 RT: 10.055 min Scan# 1471
 Delta R.T. 0.000 min
 Lab File: VX033519.D
 Acq: 20 Dec 2022 19:30

Tgt Ion: 117 Resp: 224893

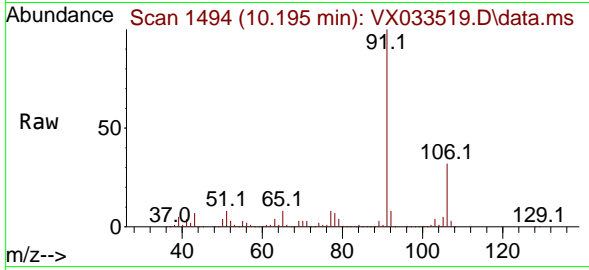
Ion	Ratio	Lower	Upper
117	100		
82	51.9	44.3	66.5
119	32.3	25.7	38.5



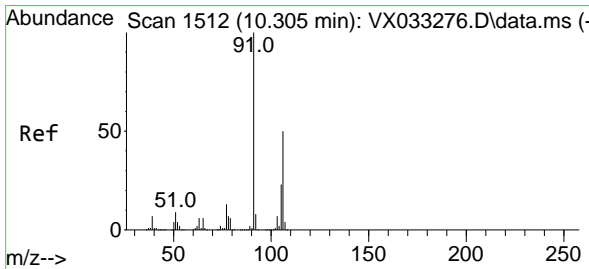
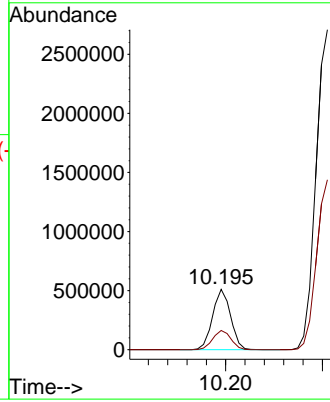
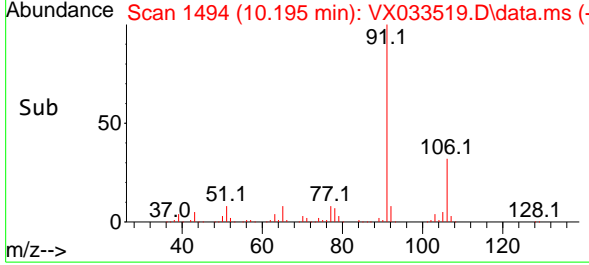


#67
 Ethyl Benzene
 Concen: 82.881 ug/l
 RT: 10.195 min Scan# 1494
 Delta R.T. 0.000 min
 Lab File: VX033519.D
 Acq: 20 Dec 2022 19:30

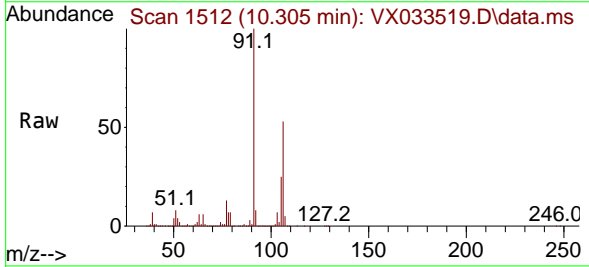
Instrument :
 MSVOA_X
 ClientSampleId :
 WEST-1



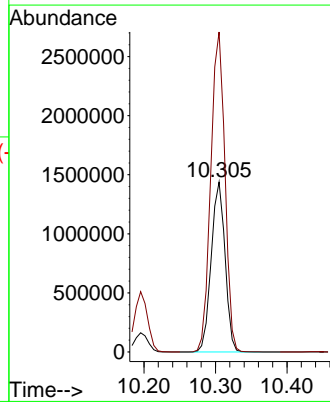
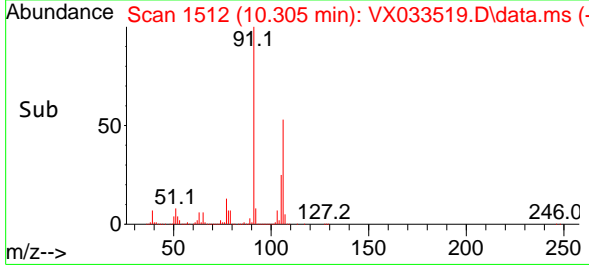
Tgt Ion: 91 Resp: 657569
 Ion Ratio Lower Upper
 91 100
 106 31.8 25.0 37.6

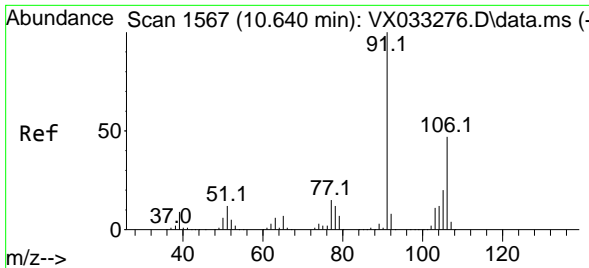


#68
 m/p-Xylenes
 Concen: 625.533 ug/l
 RT: 10.305 min Scan# 1512
 Delta R.T. 0.000 min
 Lab File: VX033519.D
 Acq: 20 Dec 2022 19:30



Tgt Ion: 106 Resp: 1930924
 Ion Ratio Lower Upper
 106 100
 91 193.0 164.5 246.7

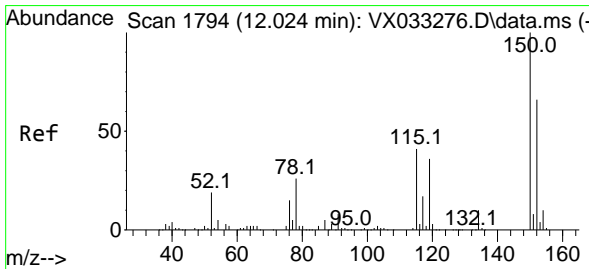
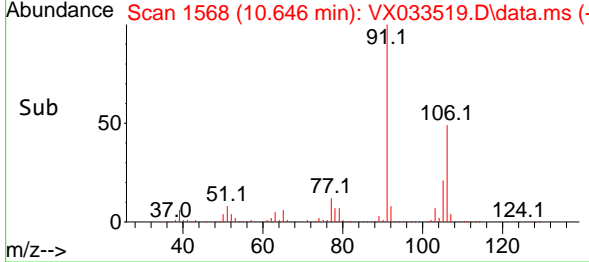
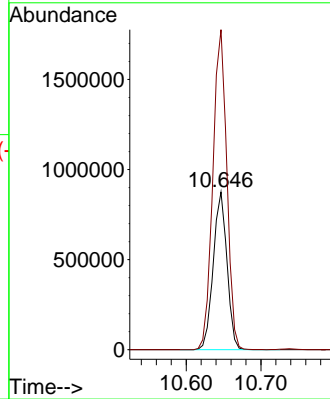
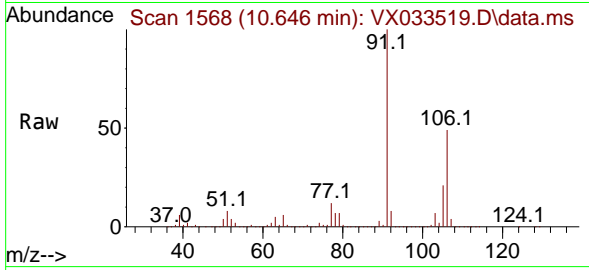




#69
 o-Xylene
 Concen: 365.384 ug/l
 RT: 10.646 min Scan# 11
 Delta R.T. 0.006 min
 Lab File: VX033519.D
 Acq: 20 Dec 2022 19:30

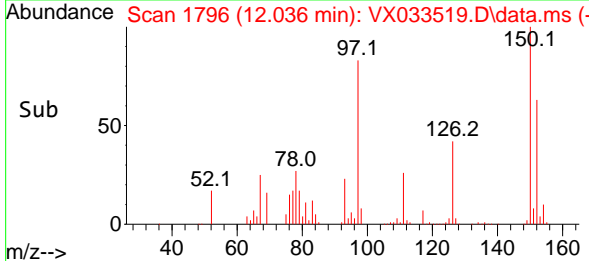
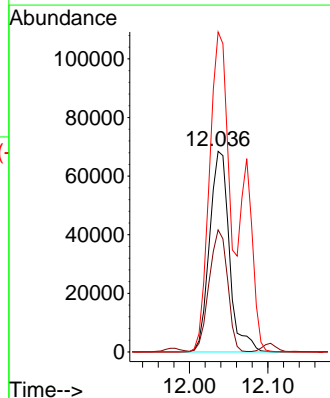
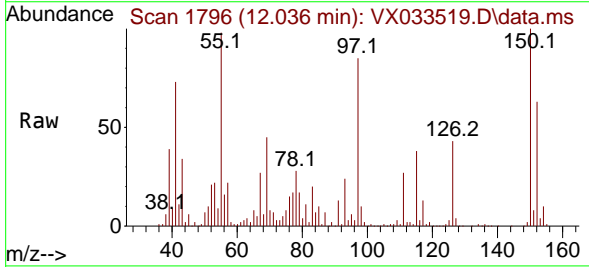
Instrument :
 MSVOA_X
 ClientSampleId :
 WEST-1

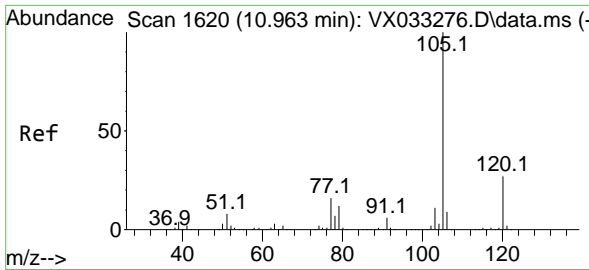
Tgt Ion:106 Resp: 1114846
 Ion Ratio Lower Upper
 106 100
 91 206.8 109.2 327.6



#72
 1,4-Dichlorobenzene-d4
 Concen: 50.000 ug/l
 RT: 12.036 min Scan# 1796
 Delta R.T. 0.013 min
 Lab File: VX033519.D
 Acq: 20 Dec 2022 19:30

Tgt Ion:152 Resp: 120289
 Ion Ratio Lower Upper
 152 100
 115 56.3 44.0 132.0
 150 160.2 0.0 351.8

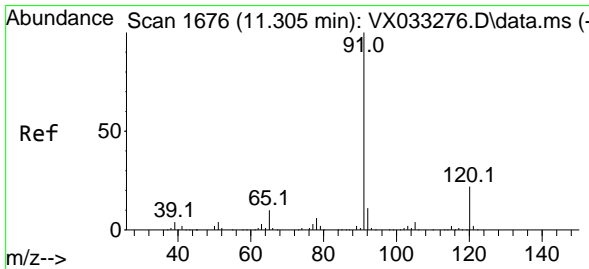
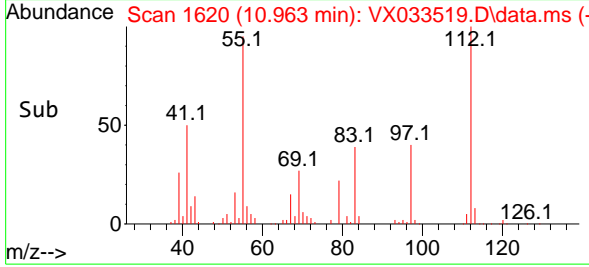
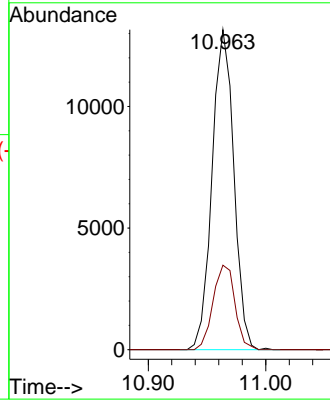
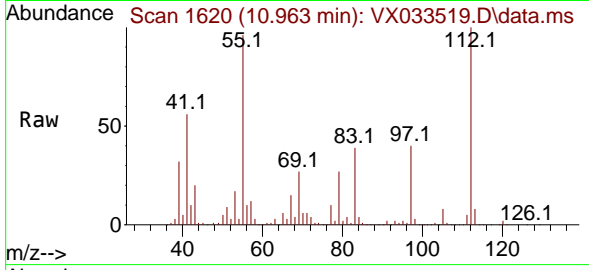




#73
 Isopropylbenzene
 Concen: 1.941 ug/l
 RT: 10.963 min Scan# 1620
 Delta R.T. 0.000 min
 Lab File: VX033519.D
 Acq: 20 Dec 2022 19:30

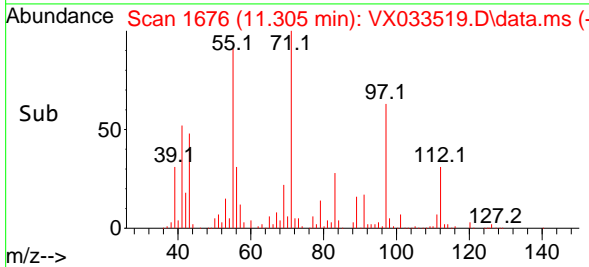
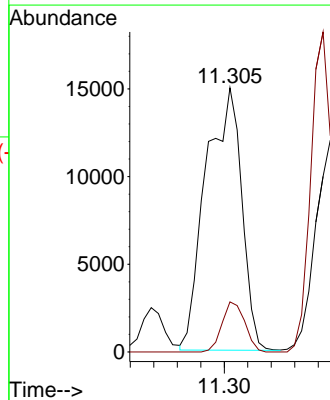
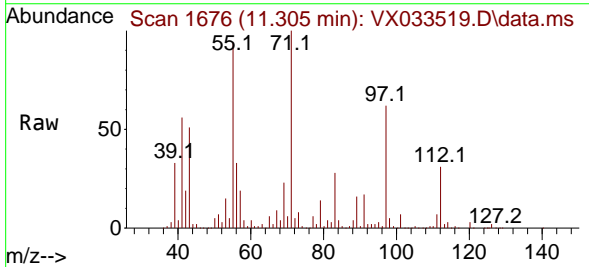
Instrument :
 MSVOA_X
 ClientSampleId :
 WEST-1

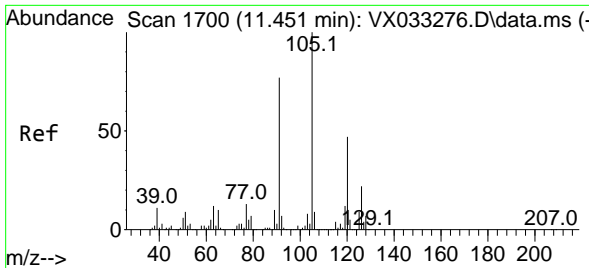
Tgt Ion:105 Resp: 16921
 Ion Ratio Lower Upper
 105 100
 120 26.6 13.1 39.3



#78
 n-propylbenzene
 Concen: 3.253 ug/l
 RT: 11.305 min Scan# 1676
 Delta R.T. 0.000 min
 Lab File: VX033519.D
 Acq: 20 Dec 2022 19:30

Tgt Ion: 91 Resp: 31670
 Ion Ratio Lower Upper
 91 100
 120 12.2 11.6 34.8

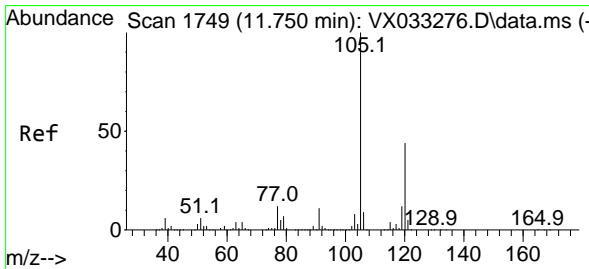
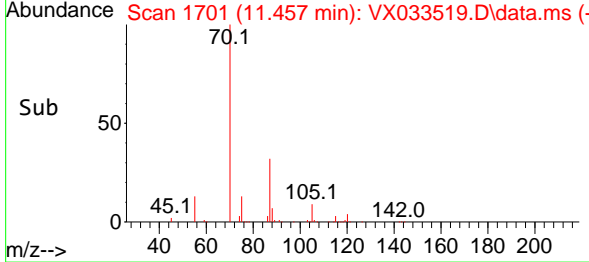
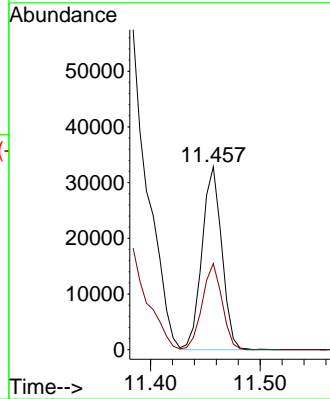
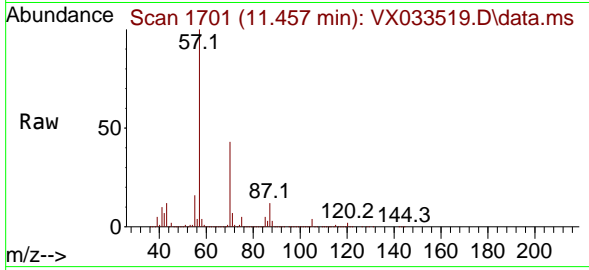




#80
 1,3,5-Trimethylbenzene
 Concen: 5.677 ug/l
 RT: 11.457 min Scan# 1700
 Delta R.T. 0.006 min
 Lab File: VX033519.D
 Acq: 20 Dec 2022 19:30

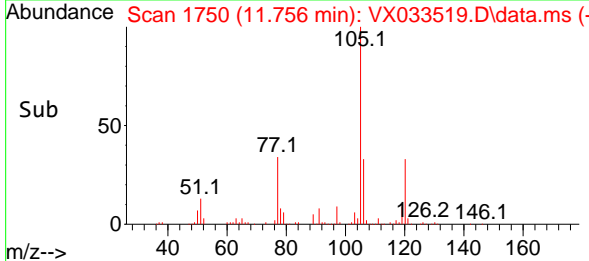
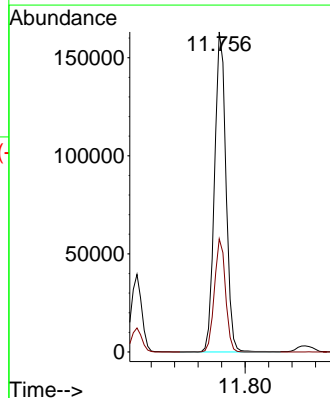
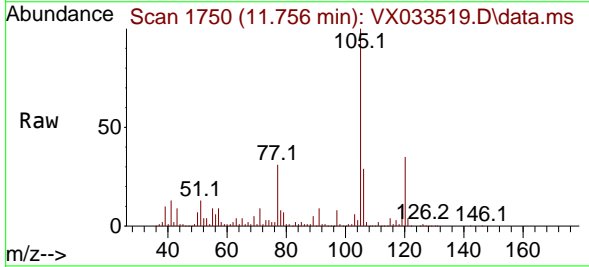
Instrument : MSVOA_X
 ClientSampleId : WEST-1

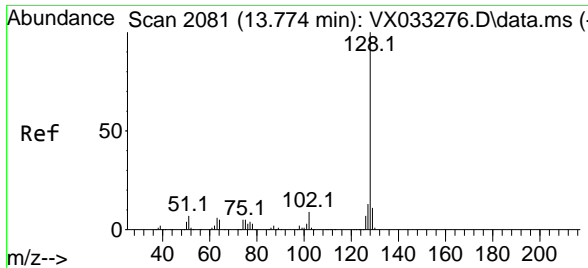
Tgt Ion:105 Resp: 41202
 Ion Ratio Lower Upper
 105 100
 120 47.1 23.6 71.0



#84
 1,2,4-Trimethylbenzene
 Concen: 30.421 ug/l
 RT: 11.756 min Scan# 1750
 Delta R.T. 0.006 min
 Lab File: VX033519.D
 Acq: 20 Dec 2022 19:30

Tgt Ion:105 Resp: 220384
 Ion Ratio Lower Upper
 105 100
 120 34.1 21.9 65.5





#95
 Naphthalene
 Concen: 5.710 ug/l
 RT: 13.780 min Scan# 20
 Delta R.T. 0.006 min
 Lab File: VX033519.D
 Acq: 20 Dec 2022 19:30

Instrument : MSVOA_X
 ClientSampleId : WEST-1

Tgt Ion:128 Resp: 45868

Ion	Ratio	Lower	Upper
128	100		
127	13.0	10.2	15.4
129	0.0	8.9	13.3#

