

Data Path : Z:\voasrv\HPCHEM1\MSVOA_X\Data\VX122024\
 Data File : VX044463.D
 Acq On : 20 Dec 2024 19:26
 Operator : JC/MD
 Sample : P5355-02
 Misc : 5.0mL/MSVOA_X/WATER
 ALS Vial : 27 Sample Multiplier: 1

Instrument :
 MSVOA_X
 ClientSampleId :

Quant Time: Dec 20 22:36:24 2024
 Quant Method : Z:\voasrv\HPCHEM1\MSVOA_X\Method\82X121124W.M
 Quant Title : SW846 8260
 QLast Update : Thu Dec 12 04:28:14 2024
 Response via : Initial Calibration

Compound	R.T.	QIon	Response	Conc	Units	Dev(Min)
Internal Standards						
1) Pentafluorobenzene	5.543	168	124489	50.000	ug/l	0.00
34) 1,4-Difluorobenzene	6.757	114	216029	50.000	ug/l	0.00
63) Chlorobenzene-d5	10.055	117	184635	50.000	ug/l	0.00
72) 1,4-Dichlorobenzene-d4	12.024	152	77635	50.000	ug/l	0.00
System Monitoring Compounds						
33) 1,2-Dichloroethane-d4	5.952	65	88705	40.640	ug/l	0.00
Spiked Amount	50.000	Range	74 - 125	Recovery	=	81.280%
35) Dibromofluoromethane	5.385	113	70904	47.389	ug/l	0.00
Spiked Amount	50.000	Range	75 - 124	Recovery	=	94.780%
50) Toluene-d8	8.646	98	257204	50.954	ug/l	0.00
Spiked Amount	50.000	Range	86 - 113	Recovery	=	101.900%
62) 4-Bromofluorobenzene	11.079	95	79235	44.923	ug/l	0.00
Spiked Amount	50.000	Range	77 - 121	Recovery	=	89.840%
Target Compounds						
						Qvalue
3) Chloromethane	1.294	50	515	0.280	ug/l #	42
5) Bromomethane	1.593	94	1086	0.798	ug/l #	30
9) 1,1,2-Trichlorotrifluo...	2.318	101	524	0.345	ug/l #	80
11) Tert butyl alcohol	2.940	59	1853	6.024	ug/l #	71
12) 1,1-Dichloroethene	2.306	96	500	0.358	ug/l	96
13) Acrolein	2.227	56	190	0.427	ug/l #	1
14) Allyl chloride	2.654	41	895	0.385	ug/l #	63
15) Acrylonitrile	3.080	53	674	0.791	ug/l #	57
16) Acetone	2.385	43	28565	32.101	ug/l	99
17) Carbon Disulfide	2.501	76	2302	0.868	ug/l #	93
18) Methyl Acetate	2.709	43	2479	1.080	ug/l	99
20) Methylene Chloride	2.782	84	3227	1.931	ug/l	85
21) trans-1,2-Dichloroethene	3.087	96	746	0.503	ug/l #	77
25) 2-Butanone	4.598	43	3099	2.450	ug/l	90
27) cis-1,2-Dichloroethene	4.501	96	380	0.202	ug/l	91
29) Tetrahydrofuran	5.031	42	354	0.436	ug/l #	50
30) Chloroform	5.086	83	21755	6.637	ug/l	93
36) 1,1-Dichloropropene	5.696	75	808	0.418	ug/l #	69
37) Ethyl Acetate	4.745	43	1287	0.538	ug/l #	79
39) Methylcyclohexane	7.378	83	631	0.273	ug/l #	76
43) Isopropyl Acetate	6.342	43	77071	20.626	ug/l	99
44) Trichloroethene	7.122	130	2438	1.665	ug/l	99
46) Dibromomethane	7.586	93	428	0.368	ug/l #	79
48) Methyl methacrylate	7.793	41	41945	23.125	ug/l #	46
51) 4-Methyl-2-Pentanone	8.549	43	65051	27.075	ug/l #	47
52) Toluene	8.732	92	1013	0.275	ug/l	77
53) t-1,3-Dichloropropene	8.994	75	404	1.189	ug/l #	65
54) cis-1,3-Dichloropropene	8.549	75	28208	12.889	ug/l #	66
59) 2-Hexanone	9.482	43	32325	18.588	ug/l #	53
60) Dibromochloromethane	9.530	129	119	1.309	ug/l	58
64) Tetrachloroethene	9.268	164	707	0.577	ug/l #	55
65) Chlorobenzene	10.079	112	1281	0.324	ug/l #	55
67) Ethyl Benzene	10.195	91	1915	0.280	ug/l	97
68) m/p-Xylenes	10.299	106	1496	0.596	ug/l	91
69) o-Xylene	10.658	106	581	0.229	ug/l	96
70) Styrene	10.664	104	1084	0.266	ug/l	92

Data Path : Z:\voasrv\HPCHEM1\MSVOA_X\Data\VX122024\
 Data File : VX044463.D
 Acq On : 20 Dec 2024 19:26
 Operator : JC/MD
 Sample : P5355-02
 Misc : 5.0mL/MSVOA_X/WATER
 ALS Vial : 27 Sample Multiplier: 1

Instrument :
 MSVOA_X
 ClientSampleId :

Quant Time: Dec 20 22:36:24 2024
 Quant Method : Z:\voasrv\HPCHEM1\MSVOA_X\Method\82X121124W.M
 Quant Title : SW846 8260
 QLast Update : Thu Dec 12 04:28:14 2024
 Response via : Initial Calibration

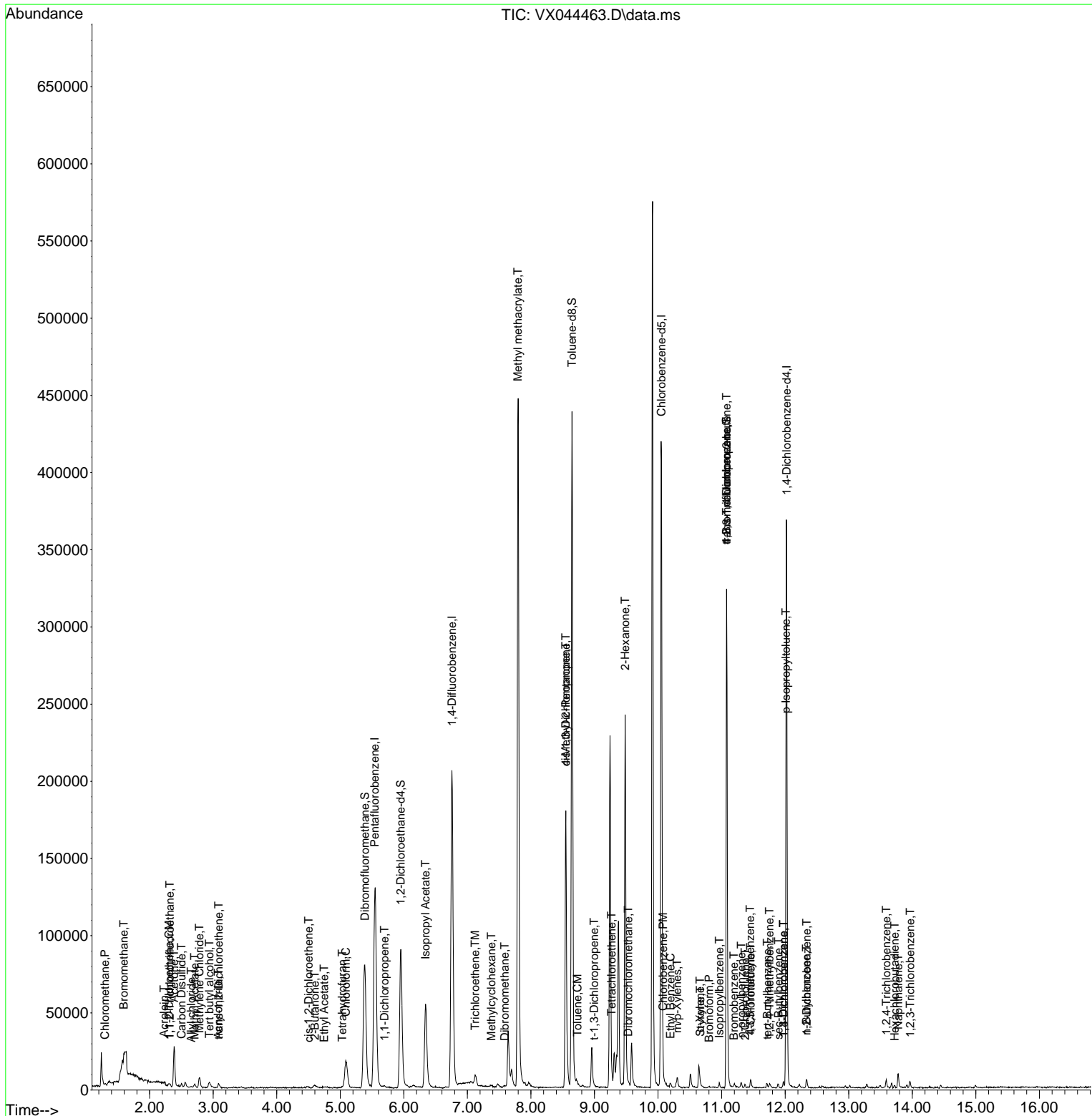
Compound	R.T.	QIon	Response	Conc	Units	Dev(Min)
71) Bromoform	10.805	173	121	1.378	ug/l #	29
73) Isopropylbenzene	10.963	105	1698	0.286	ug/l	94
76) 1,2,3-Trichloropropane	11.079	75	44759	25.821	ug/l #	36
77) Bromobenzene	11.195	156	575	0.399	ug/l	93
78) n-propylbenzene	11.311	91	2217	0.337	ug/l	95
79) 2-Chlorotoluene	11.372	91	1439	0.339	ug/l	90
80) 1,3,5-Trimethylbenzene	11.451	105	1344	0.273	ug/l	86
81) trans-1,4-Dichloro-2-b...	11.079	75	44759	71.315	ug/l #	4
82) 4-Chlorotoluene	11.457	91	2196	0.467	ug/l	93
83) tert-Butylbenzene	11.719	119	1216	0.250	ug/l #	90
84) 1,2,4-Trimethylbenzene	11.756	105	1543	0.319	ug/l	99
85) sec-Butylbenzene	11.896	105	1816	0.307	ug/l	97
86) p-Isopropyltoluene	12.012	119	1556	0.316	ug/l #	75
87) 1,3-Dichlorobenzene	11.975	146	1309	0.520	ug/l	98
88) 1,4-Dichlorobenzene	11.975	146	1309	0.506	ug/l	97
89) n-Butylbenzene	12.335	91	1753	0.424	ug/l	98
91) 1,2-Dichlorobenzene	12.341	146	978	0.374	ug/l	98
93) 1,2,4-Trichlorobenzene	13.591	180	1201	0.838	ug/l	86
94) Hexachlorobutadiene	13.725	225	364	0.631	ug/l #	76
95) Naphthalene	13.780	128	6838	1.222	ug/l	98
96) 1,2,3-Trichlorobenzene	13.969	180	1317	0.866	ug/l	98

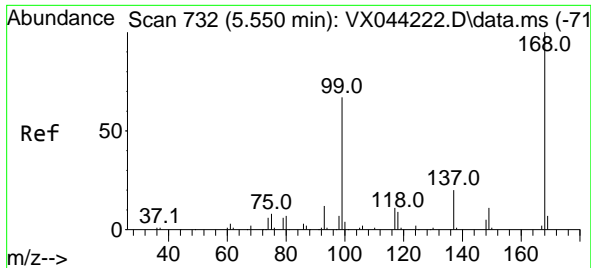
(#) = qualifier out of range (m) = manual integration (+) = signals summed

Data Path : Z:\voasrv\HPCHEM1\MSVOA_X\Data\VX122024\
 Data File : VX044463.D
 Acq On : 20 Dec 2024 19:26
 Operator : JC/MD
 Sample : P5355-02
 Misc : 5.0mL/MSVOA_X/WATER
 ALS Vial : 27 Sample Multiplier: 1

Instrument :
 MSVOA_X
 ClientSampleId :

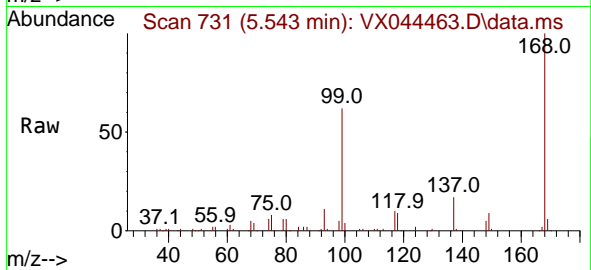
Quant Time: Dec 20 22:36:24 2024
 Quant Method : Z:\voasrv\HPCHEM1\MSVOA_X\Method\82X121124W.M
 Quant Title : SW846 8260
 QLast Update : Thu Dec 12 04:28:14 2024
 Response via : Initial Calibration



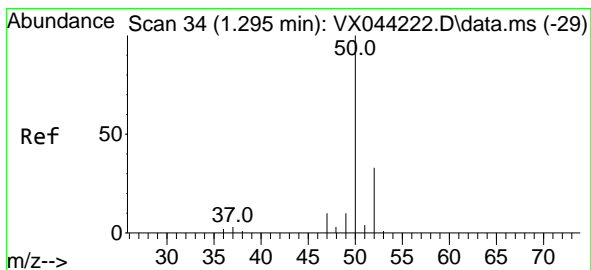
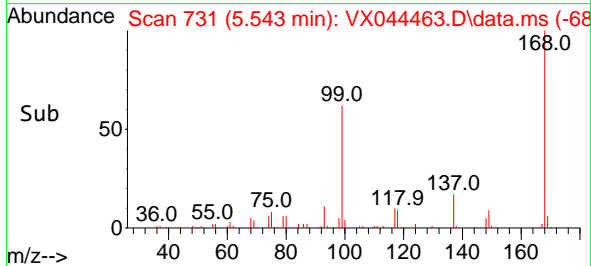
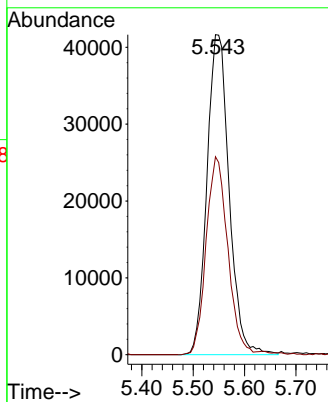


#1
 Pentafluorobenzene
 Concen: 50.000 ug/l
 RT: 5.543 min Scan# 71
 Delta R.T. -0.007 min
 Lab File: VX044463.D
 Acq: 20 Dec 2024 19:26

Instrument :
 MSVOA_X
 ClientSampleId :

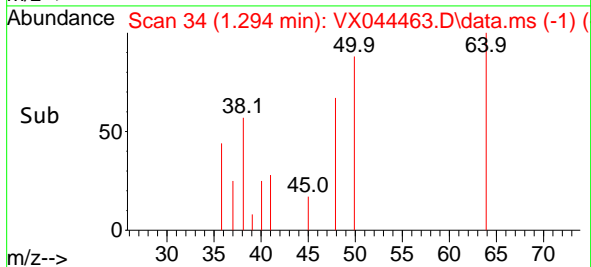
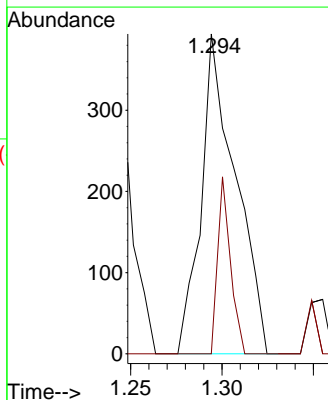
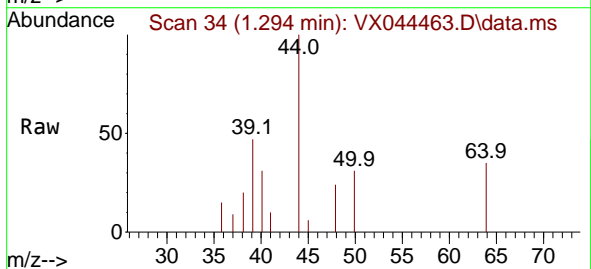


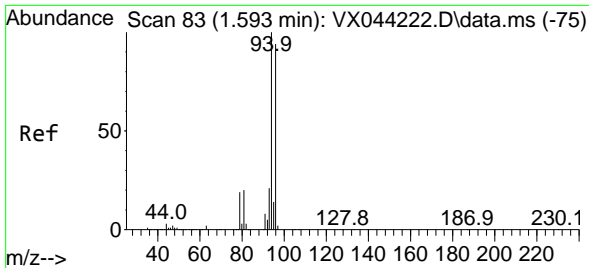
Tgt Ion:168 Resp: 124489
 Ion Ratio Lower Upper
 168 100
 99 61.9 53.4 80.0



#3
 Chloromethane
 Concen: 0.280 ug/l
 RT: 1.294 min Scan# 34
 Delta R.T. -0.000 min
 Lab File: VX044463.D
 Acq: 20 Dec 2024 19:26

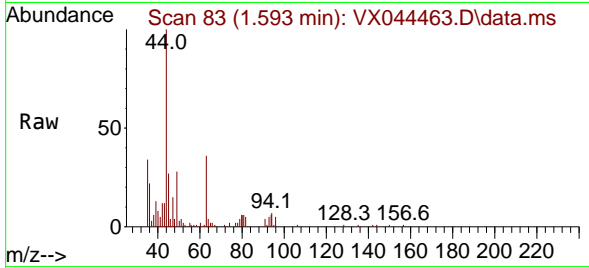
Tgt Ion: 50 Resp: 515
 Ion Ratio Lower Upper
 50 100
 52 0.0 26.5 39.7#



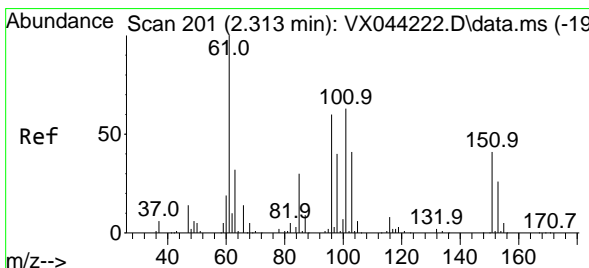
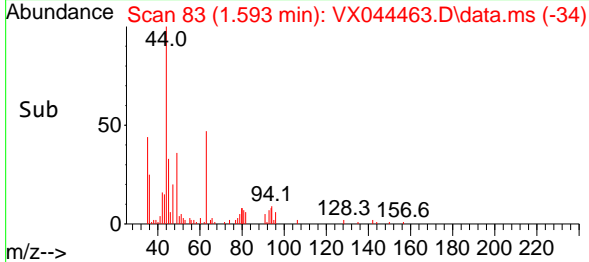
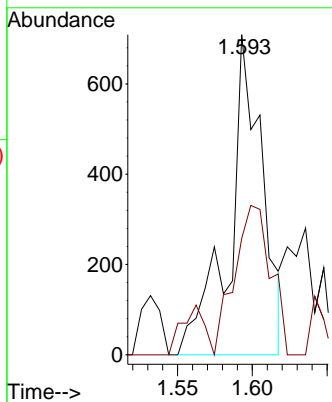


#5
 Bromomethane
 Concen: 0.798 ug/l
 RT: 1.593 min Scan# 81
 Delta R.T. -0.000 min
 Lab File: VX044463.D
 Acq: 20 Dec 2024 19:26

Instrument :
 MSVOA_X
 ClientSampleId :

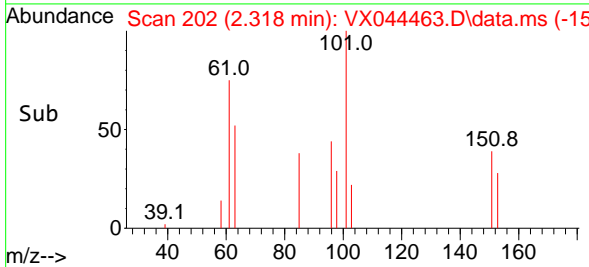
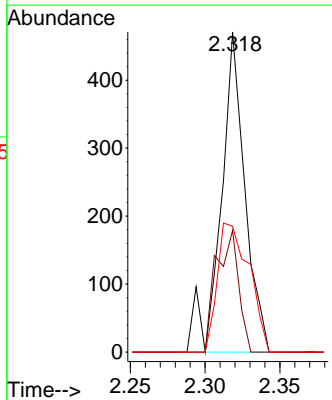
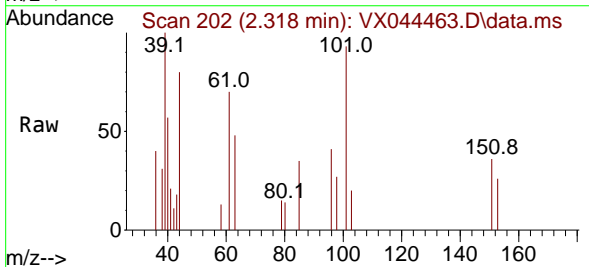


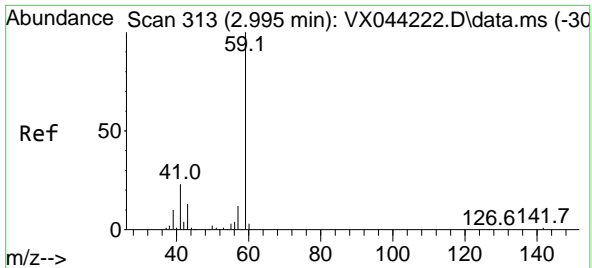
Tgt Ion: 94 Resp: 1086
 Ion Ratio Lower Upper
 94 100
 96 26.5 74.9 112.3#



#9
 1,1,2-Trichlorotrifluoroethane
 Concen: 0.345 ug/l
 RT: 2.318 min Scan# 202
 Delta R.T. 0.006 min
 Lab File: VX044463.D
 Acq: 20 Dec 2024 19:26

Tgt Ion: 101 Resp: 524
 Ion Ratio Lower Upper
 101 100
 85 35.5 38.5 57.7#
 151 53.2 55.8 83.6#

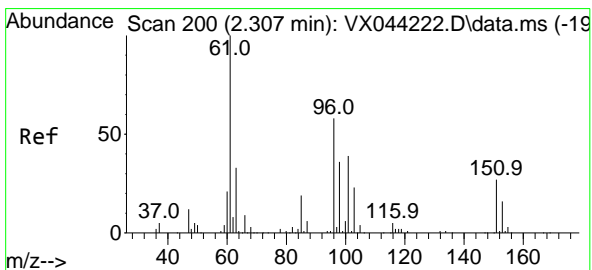
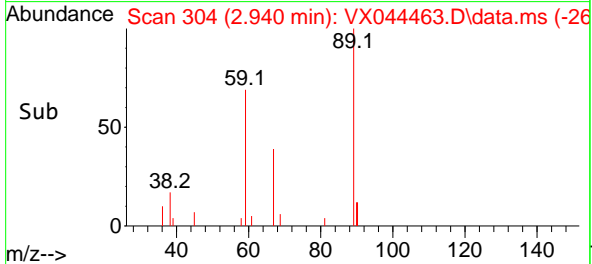
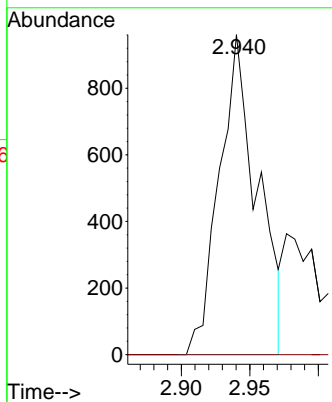
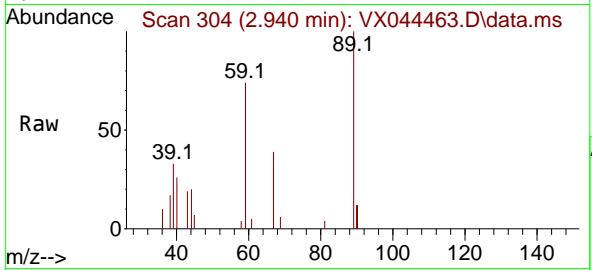




#11
 Tert butyl alcohol
 Concen: 6.024 ug/l
 RT: 2.940 min Scan# 304
 Delta R.T. -0.055 min
 Lab File: VX044463.D
 Acq: 20 Dec 2024 19:26

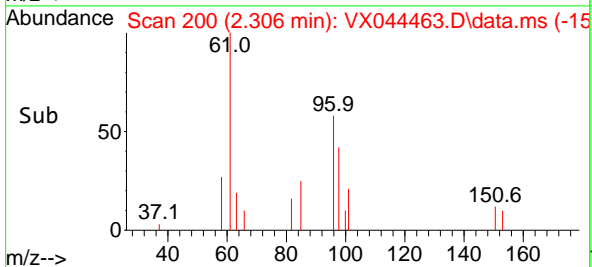
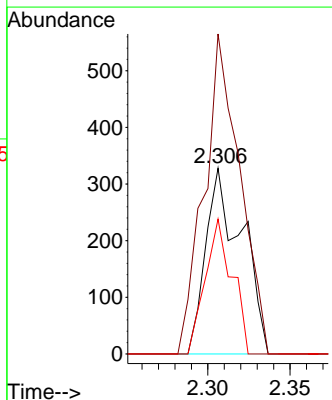
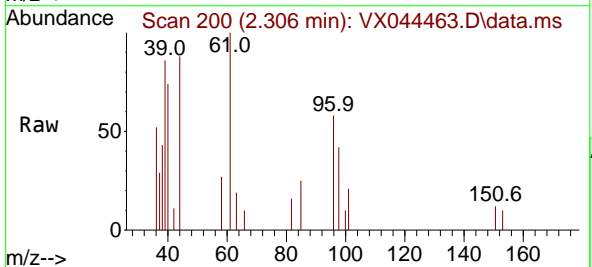
Instrument : MSVOA_X
 ClientSampleId :

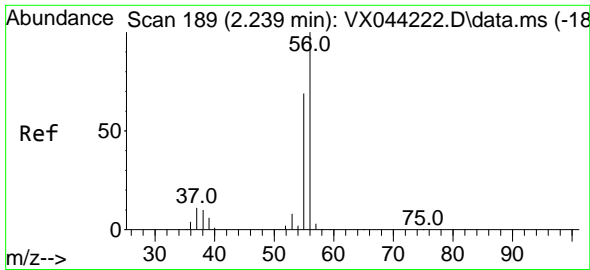
Tgt Ion: 59 Resp: 1853
 Ion Ratio Lower Upper
 59 100
 57 0.0 8.8 13.2#



#12
 1,1-Dichloroethene
 Concen: 0.358 ug/l
 RT: 2.306 min Scan# 200
 Delta R.T. -0.000 min
 Lab File: VX044463.D
 Acq: 20 Dec 2024 19:26

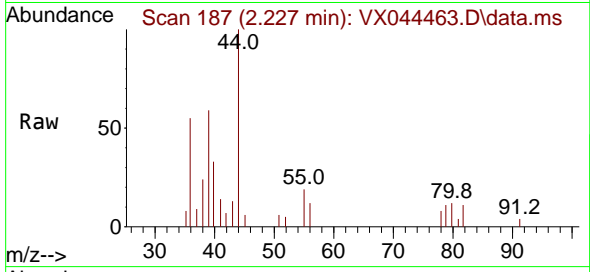
Tgt Ion: 96 Resp: 500
 Ion Ratio Lower Upper
 96 100
 61 172.3 138.0 207.0
 98 72.6 50.0 75.0



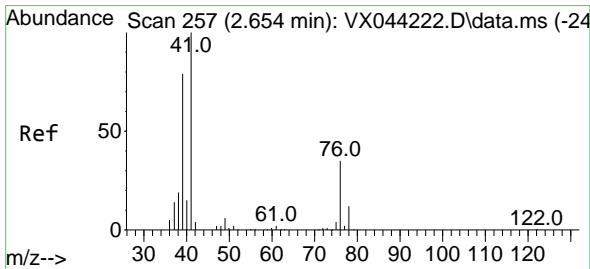
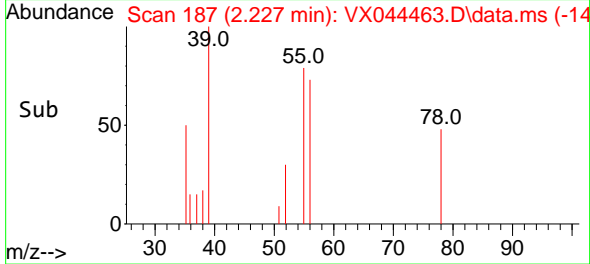
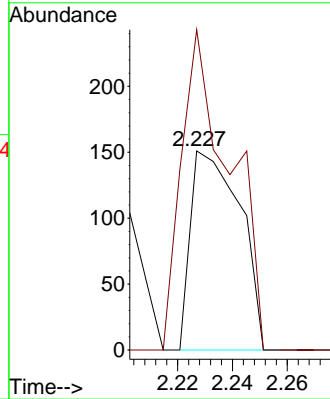


#13
 Acrolein
 Concen: 0.427 ug/l
 RT: 2.227 min Scan# 189
 Delta R.T. -0.013 min
 Lab File: VX044463.D
 Acq: 20 Dec 2024 19:26

Instrument : MSVOA_X
 ClientSampleId :

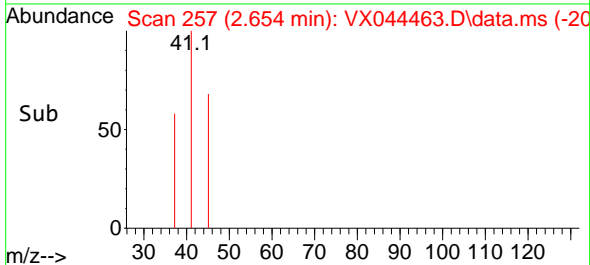
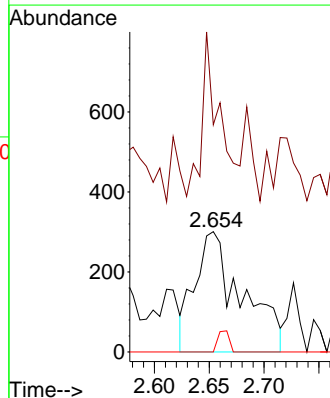
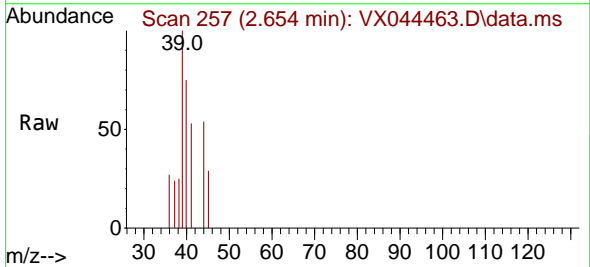


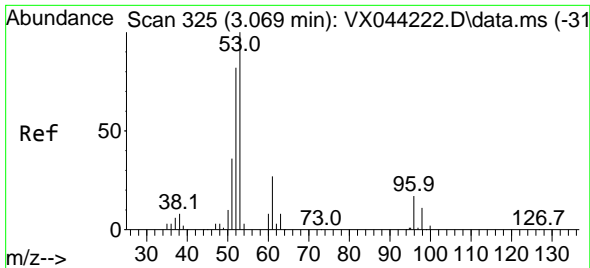
Tgt Ion: 56 Resp: 190
 Ion Ratio Lower Upper
 56 100
 55 157.4 56.6 84.8#



#14
 Allyl chloride
 Concen: 0.385 ug/l
 RT: 2.654 min Scan# 257
 Delta R.T. -0.000 min
 Lab File: VX044463.D
 Acq: 20 Dec 2024 19:26

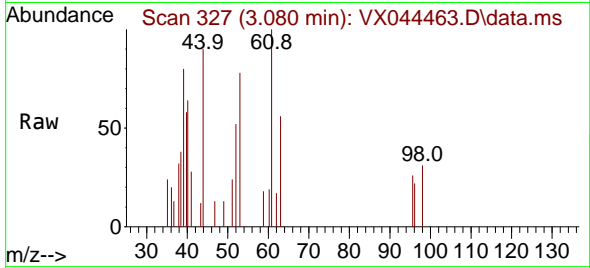
Tgt Ion: 41 Resp: 895
 Ion Ratio Lower Upper
 41 100
 39 54.1 61.9 92.9#
 76 0.0 27.4 41.2#





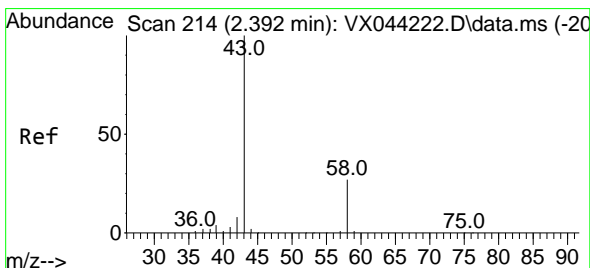
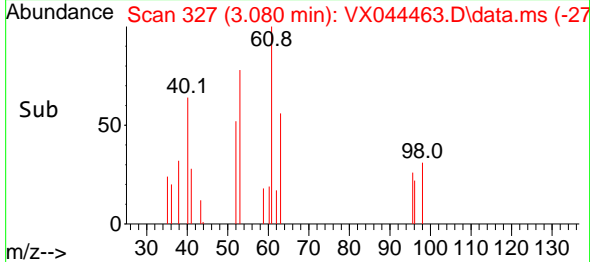
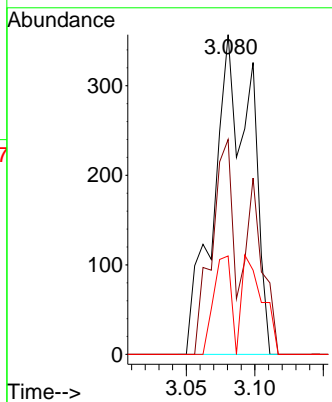
#15
 Acrylonitrile
 Concen: 0.791 ug/l
 RT: 3.080 min Scan# 31
 Delta R.T. 0.012 min
 Lab File: VX044463.D
 Acq: 20 Dec 2024 19:26

Instrument :
 MSVOA_X
 ClientSampleId :



Tgt Ion: 53 Resp: 674

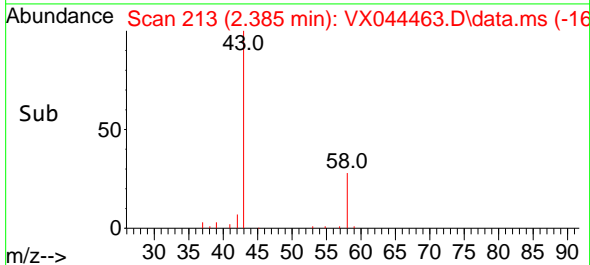
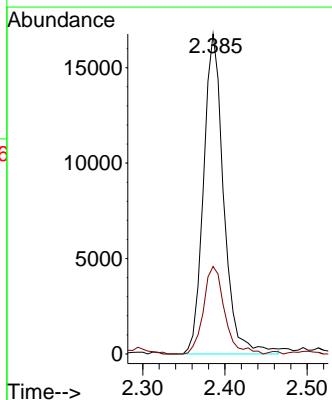
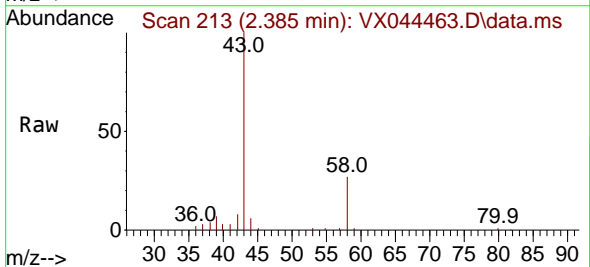
Ion	Ratio	Lower	Upper
53	100		
52	44.1	67.4	101.0#
51	14.5	30.3	45.5#

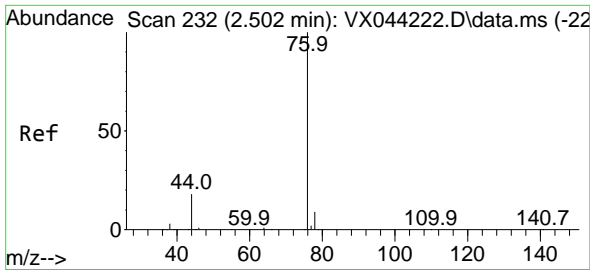


#16
 Acetone
 Concen: 32.101 ug/l
 RT: 2.385 min Scan# 213
 Delta R.T. -0.006 min
 Lab File: VX044463.D
 Acq: 20 Dec 2024 19:26

Tgt Ion: 43 Resp: 28565

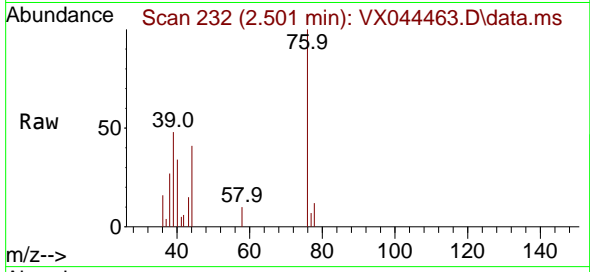
Ion	Ratio	Lower	Upper
43	100		
58	27.3	21.6	32.4



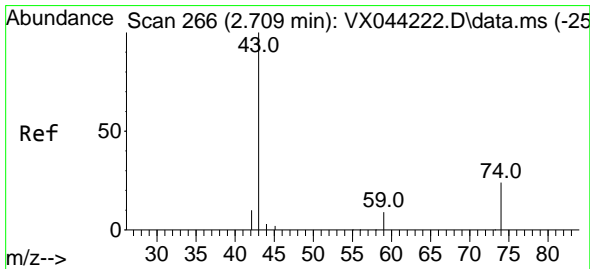
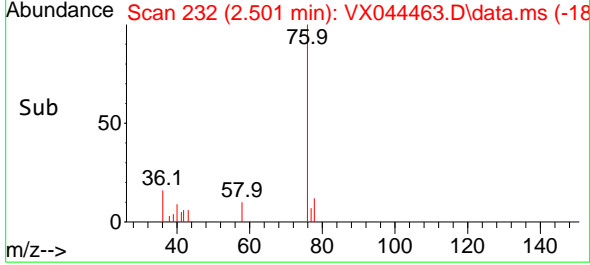
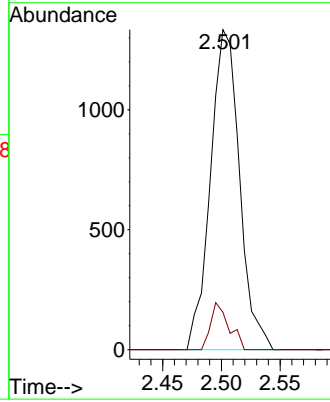


#17
 Carbon Disulfide
 Concen: 0.868 ug/l
 RT: 2.501 min Scan# 211
 Delta R.T. -0.000 min
 Lab File: VX044463.D
 Acq: 20 Dec 2024 19:26

Instrument : MSVOA_X
 ClientSampleId :

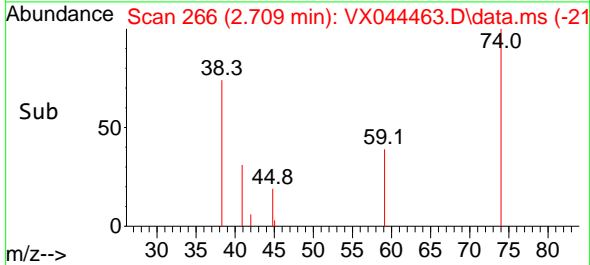
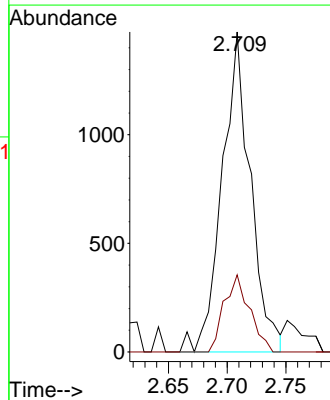
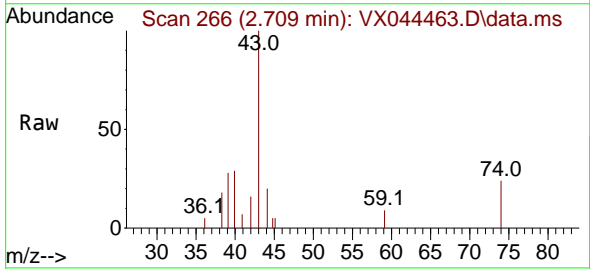


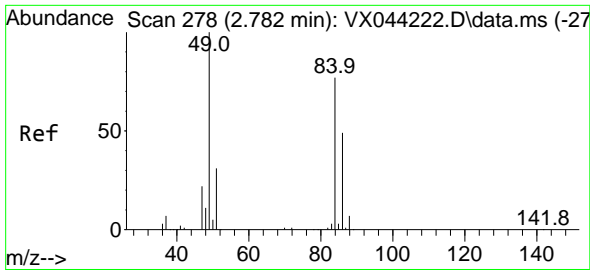
Tgt Ion: 76 Resp: 2302
 Ion Ratio Lower Upper
 76 100
 78 11.7 7.4 11.0#



#18
 Methyl Acetate
 Concen: 1.080 ug/l
 RT: 2.709 min Scan# 266
 Delta R.T. -0.000 min
 Lab File: VX044463.D
 Acq: 20 Dec 2024 19:26

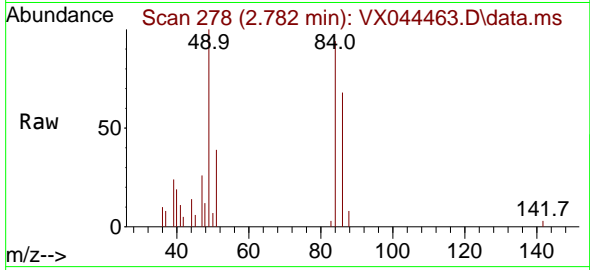
Tgt Ion: 43 Resp: 2479
 Ion Ratio Lower Upper
 43 100
 74 21.5 17.7 26.5





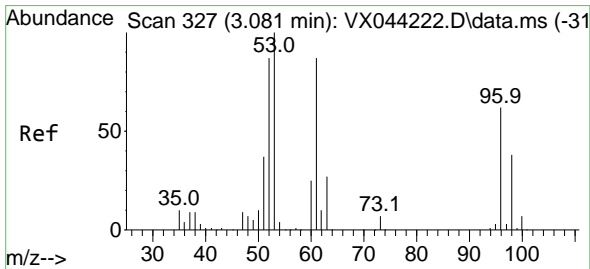
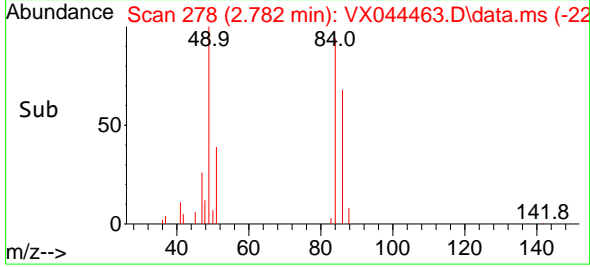
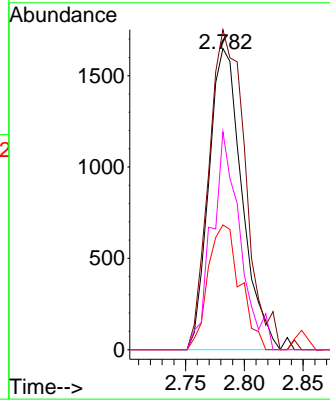
#20
 Methylene Chloride
 Concen: 1.931 ug/l
 RT: 2.782 min Scan# 21
 Delta R.T. -0.000 min
 Lab File: VX044463.D
 Acq: 20 Dec 2024 19:26

Instrument :
 MSVOA_X
 ClientSampleId :



Tgt Ion: 84 Resp: 3227

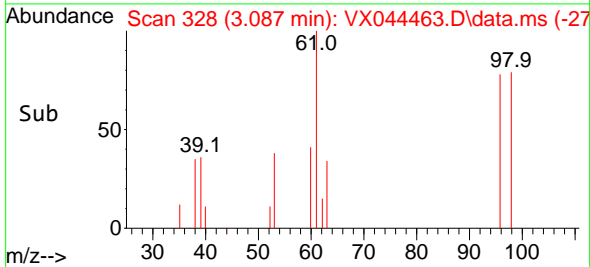
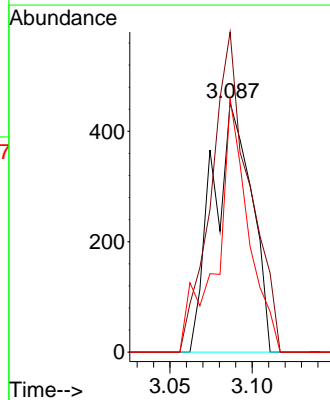
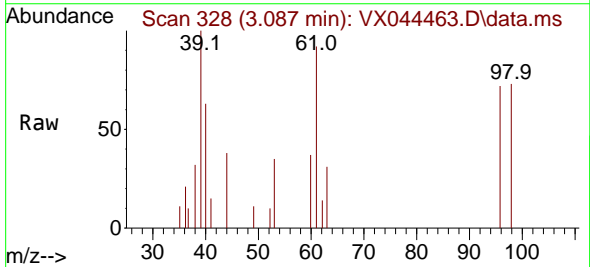
Ion	Ratio	Lower	Upper
84	100		
49	106.2	104.2	156.4
51	41.4	32.2	48.4
86	72.3	50.9	76.3

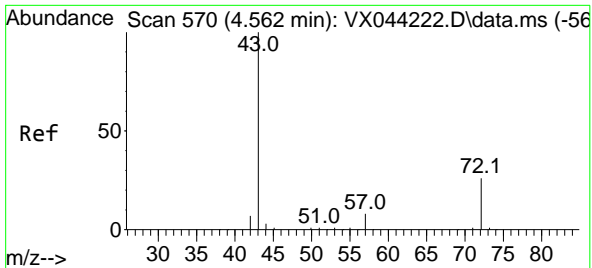


#21
 trans-1,2-Dichloroethene
 Concen: 0.503 ug/l
 RT: 3.087 min Scan# 328
 Delta R.T. 0.006 min
 Lab File: VX044463.D
 Acq: 20 Dec 2024 19:26

Tgt Ion: 96 Resp: 746

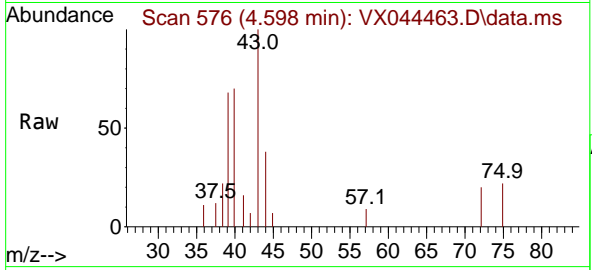
Ion	Ratio	Lower	Upper
96	100		
61	128.3	112.0	168.0
98	101.5	48.8	73.2



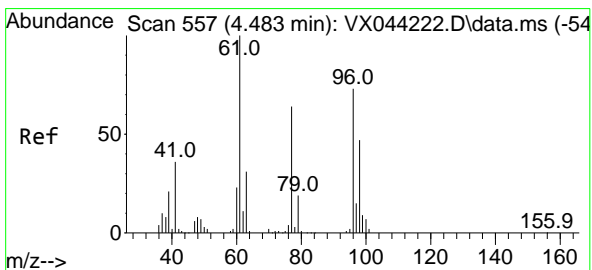
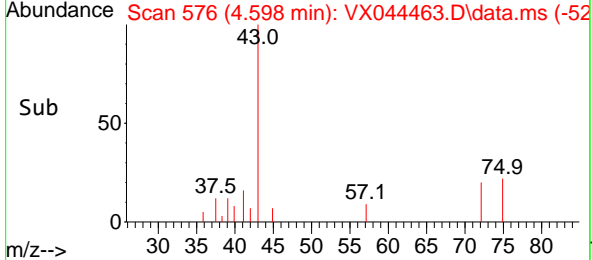
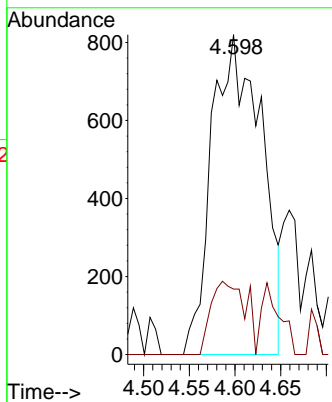


#25
 2-Butanone
 Concen: 2.450 ug/l
 RT: 4.598 min Scan# 51
 Delta R.T. 0.036 min
 Lab File: VX044463.D
 Acq: 20 Dec 2024 19:26

Instrument : MSVOA_X
 ClientSampleId :

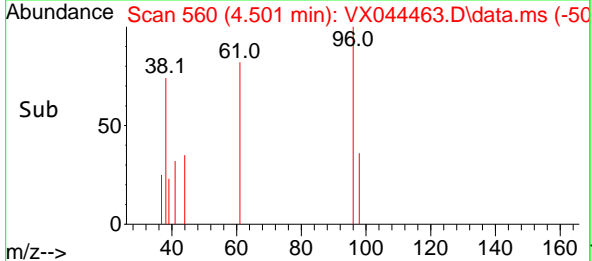
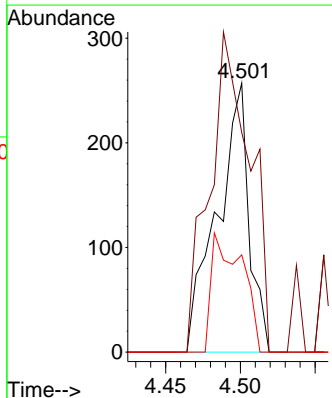
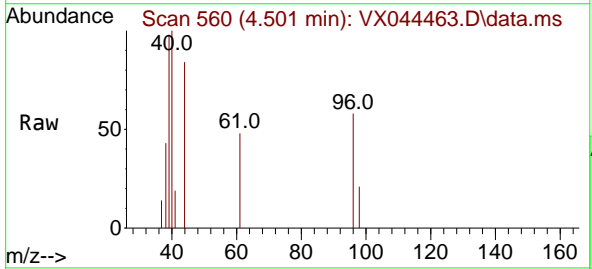


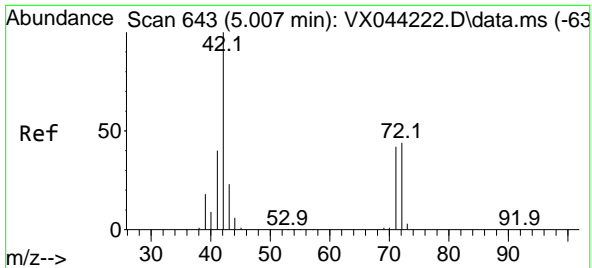
Tgt Ion: 43 Resp: 3099
 Ion Ratio Lower Upper
 43 100
 72 20.5 20.2 30.4



#27
 cis-1,2-Dichloroethene
 Concen: 0.202 ug/l
 RT: 4.501 min Scan# 560
 Delta R.T. 0.018 min
 Lab File: VX044463.D
 Acq: 20 Dec 2024 19:26

Tgt Ion: 96 Resp: 380
 Ion Ratio Lower Upper
 96 100
 61 150.8 0.0 299.0
 98 42.4 0.0 129.0



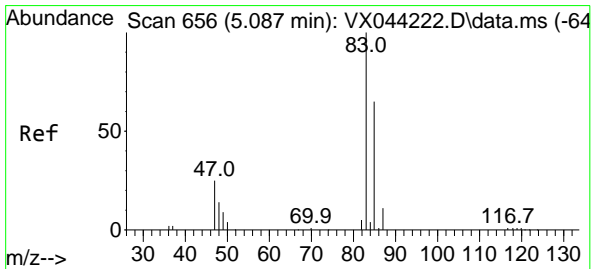
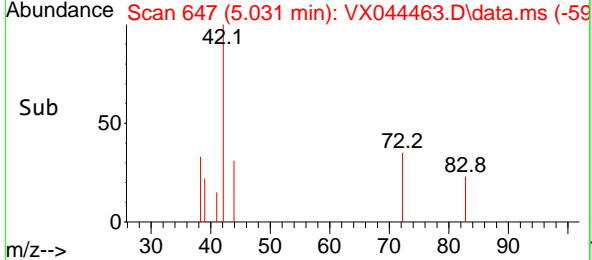
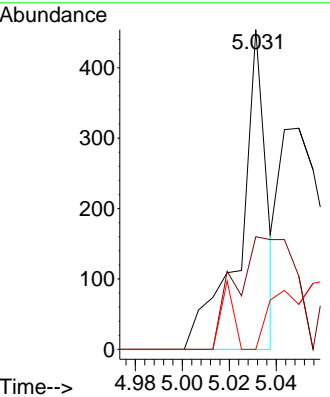
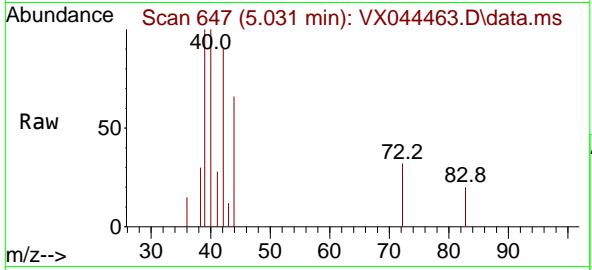


#29
 Tetrahydrofuran
 Concen: 0.436 ug/l
 RT: 5.031 min Scan# 643
 Delta R.T. 0.024 min
 Lab File: VX044463.D
 Acq: 20 Dec 2024 19:26

Instrument : MSVOA_X
 ClientSampleId :

Tgt Ion: 42 Resp: 354

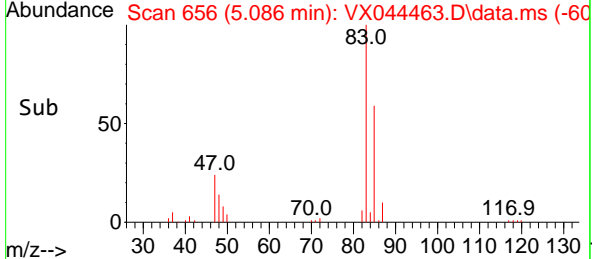
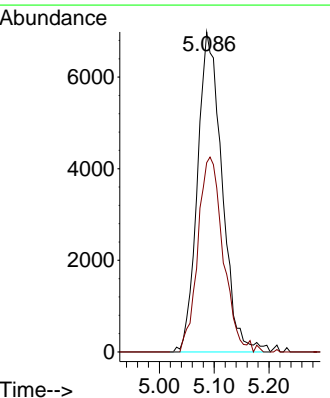
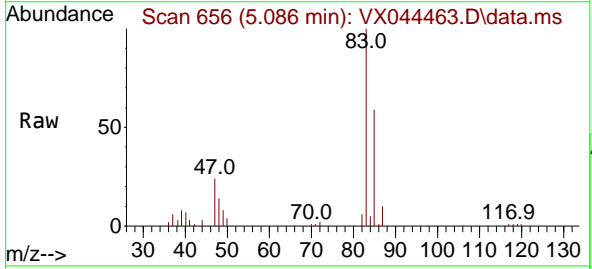
Ion	Ratio	Lower	Upper
42	100		
72	78.8	37.0	55.6#
71	9.9	33.6	50.4#

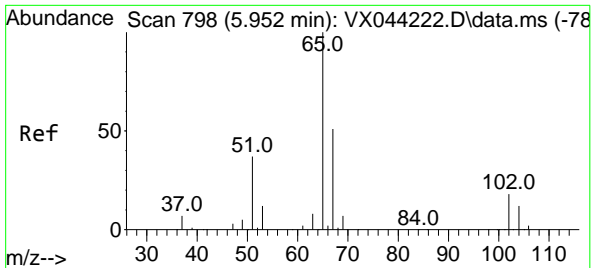


#30
 Chloroform
 Concen: 6.637 ug/l
 RT: 5.086 min Scan# 656
 Delta R.T. -0.000 min
 Lab File: VX044463.D
 Acq: 20 Dec 2024 19:26

Tgt Ion: 83 Resp: 21755

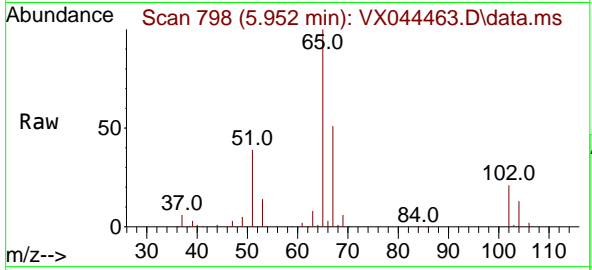
Ion	Ratio	Lower	Upper
83	100		
85	59.2	51.6	77.4



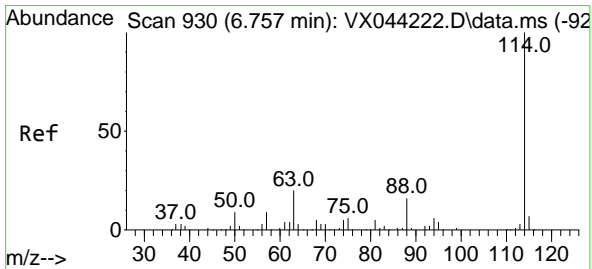
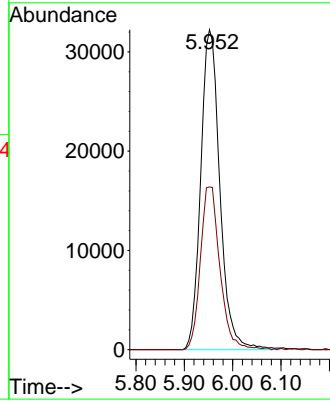
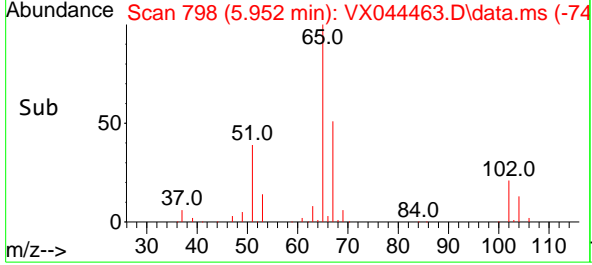


#33
 1,2-Dichloroethane-d4
 Concen: 40.640 ug/l
 RT: 5.952 min Scan# 798
 Delta R.T. -0.000 min
 Lab File: VX044463.D
 Acq: 20 Dec 2024 19:26

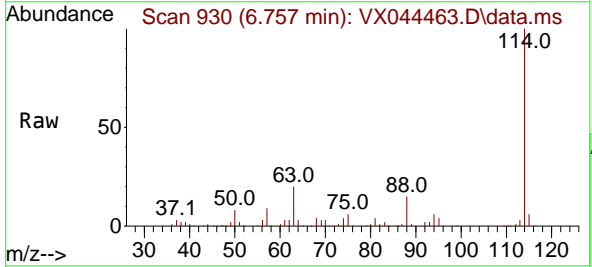
Instrument : MSVOA_X
 ClientSampleId :



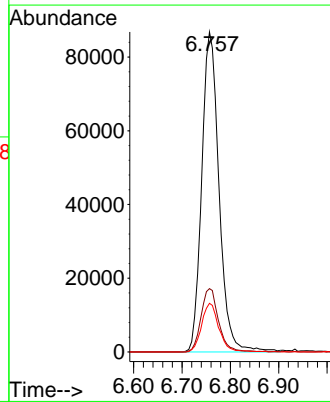
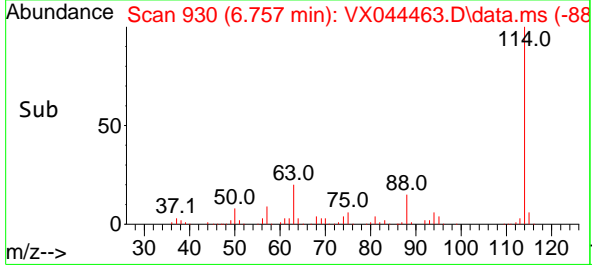
Tgt Ion: 65 Resp: 88705
 Ion Ratio Lower Upper
 65 100
 67 52.0 0.0 101.6

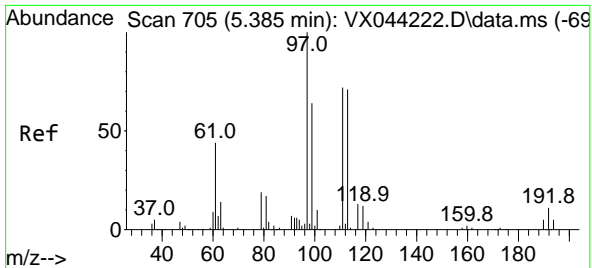


#34
 1,4-Difluorobenzene
 Concen: 50.000 ug/l
 RT: 6.757 min Scan# 930
 Delta R.T. -0.000 min
 Lab File: VX044463.D
 Acq: 20 Dec 2024 19:26



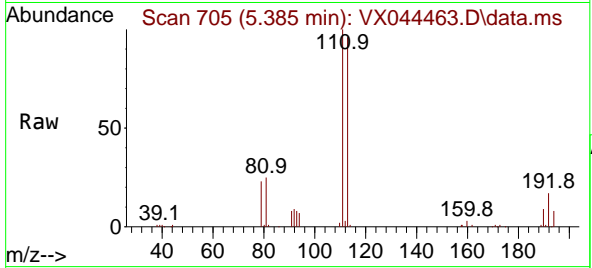
Tgt Ion: 114 Resp: 216029
 Ion Ratio Lower Upper
 114 100
 63 19.8 0.0 40.6
 88 15.2 0.0 31.8



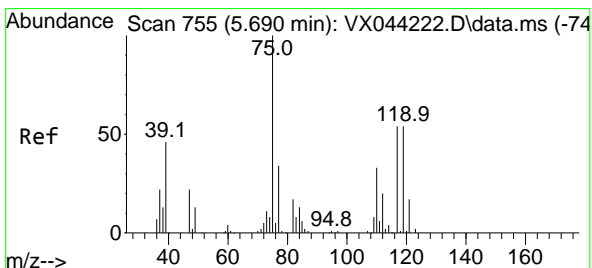
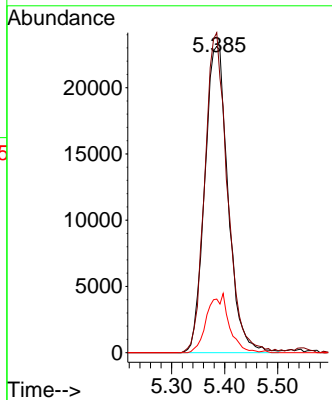
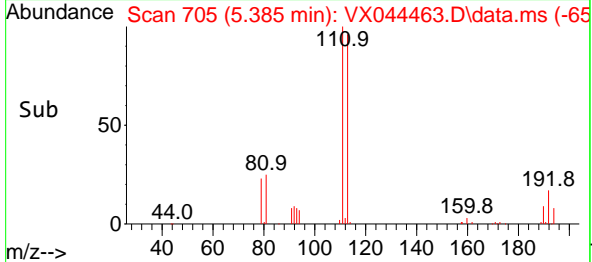


#35
 Dibromofluoromethane
 Concen: 47.389 ug/l
 RT: 5.385 min Scan# 705
 Delta R.T. -0.000 min
 Lab File: VX044463.D
 Acq: 20 Dec 2024 19:26

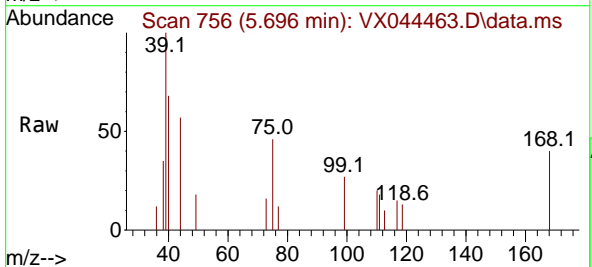
Instrument : MSVOA_X
 ClientSampleId :



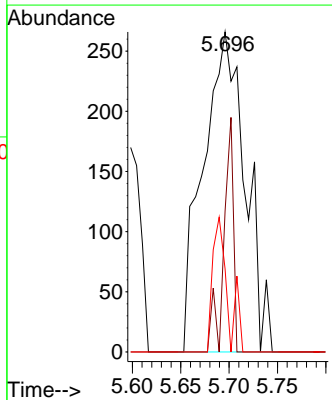
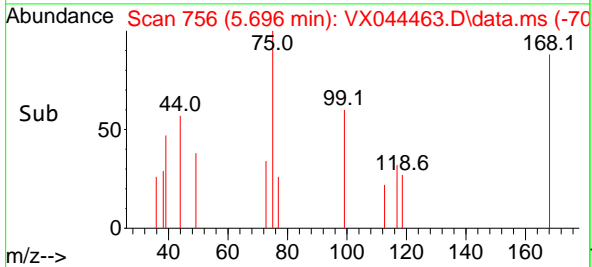
Tgt Ion:113 Resp: 70904
 Ion Ratio Lower Upper
 113 100
 111 101.4 80.4 120.6
 192 18.2 13.3 19.9

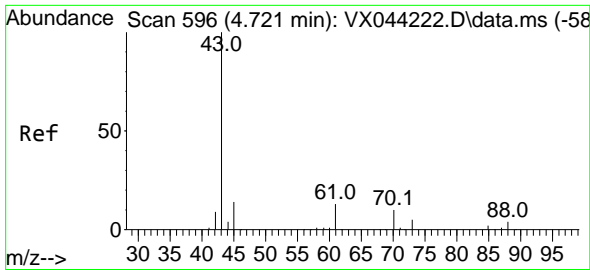


#36
 1,1-Dichloropropene
 Concen: 0.418 ug/l
 RT: 5.696 min Scan# 756
 Delta R.T. 0.006 min
 Lab File: VX044463.D
 Acq: 20 Dec 2024 19:26



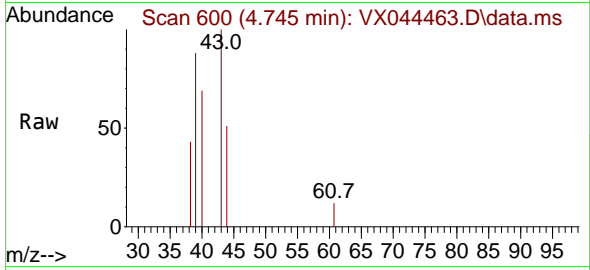
Tgt Ion: 75 Resp: 808
 Ion Ratio Lower Upper
 75 100
 110 16.5 17.3 51.7#
 77 14.9 25.4 38.0#





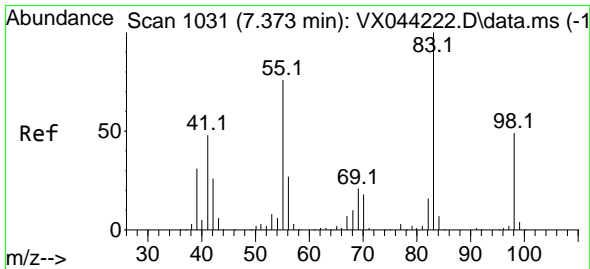
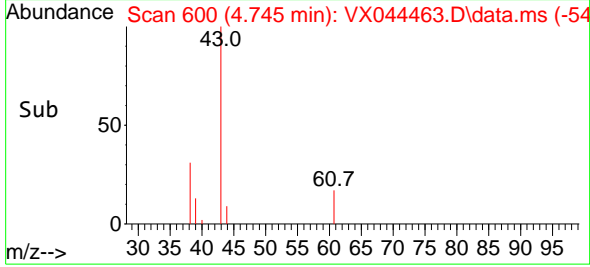
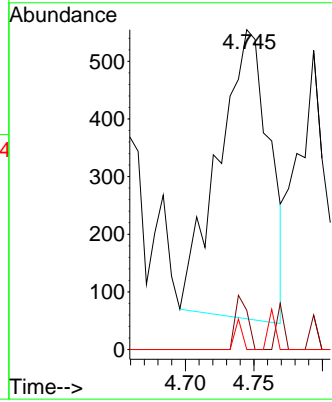
#37
 Ethyl Acetate
 Concen: 0.538 ug/l
 RT: 4.745 min Scan# 60
 Delta R.T. 0.024 min
 Lab File: VX044463.D
 Acq: 20 Dec 2024 19:26

Instrument :
 MSVOA_X
 ClientSampleId :



Tgt Ion: 43 Resp: 1287

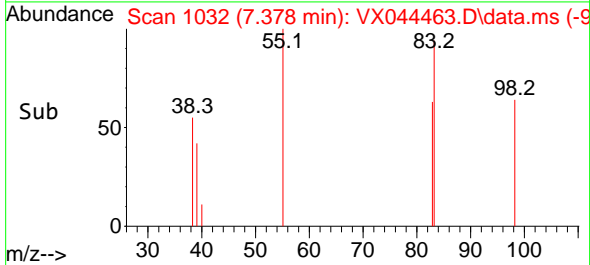
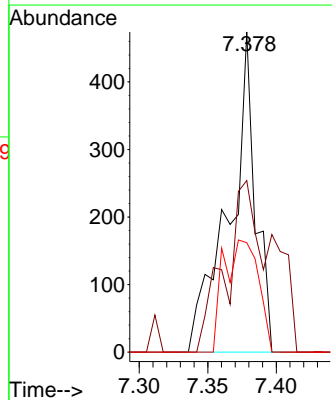
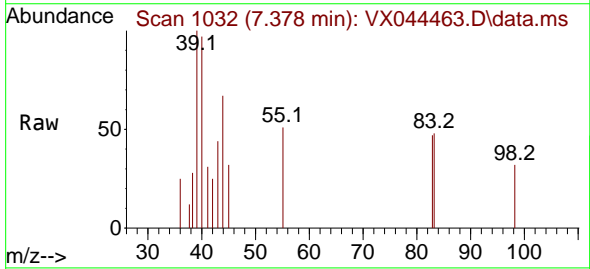
Ion	Ratio	Lower	Upper
43	100		
61	4.6	9.8	14.8#
70	1.5	7.7	11.5#

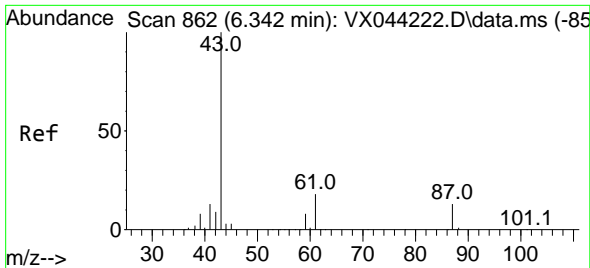


#39
 Methylcyclohexane
 Concen: 0.273 ug/l
 RT: 7.378 min Scan# 1032
 Delta R.T. 0.006 min
 Lab File: VX044463.D
 Acq: 20 Dec 2024 19:26

Tgt Ion: 83 Resp: 631

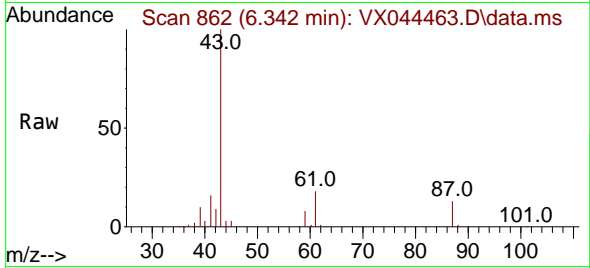
Ion	Ratio	Lower	Upper
83	100		
55	53.6	60.7	91.1#
98	34.2	38.9	58.3#



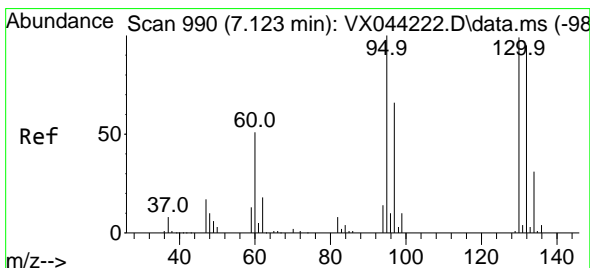
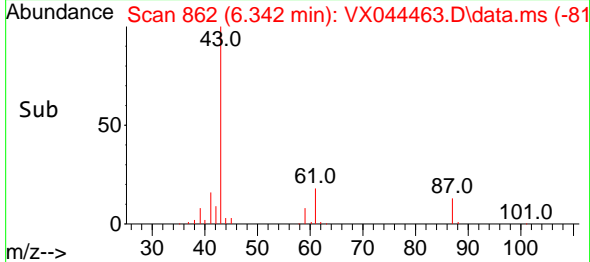
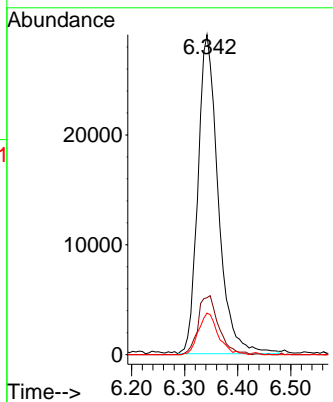


#43
 Isopropyl Acetate
 Concen: 20.626 ug/l
 RT: 6.342 min Scan# 80
 Delta R.T. -0.000 min
 Lab File: VX044463.D
 Acq: 20 Dec 2024 19:26

Instrument :
 MSVOA_X
 ClientSampleId :

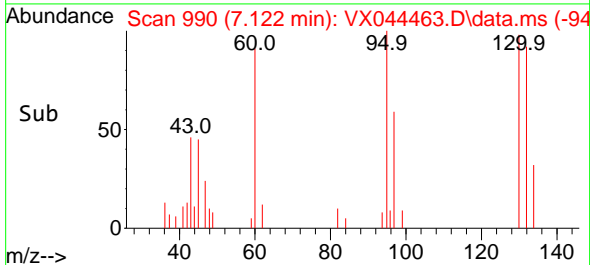
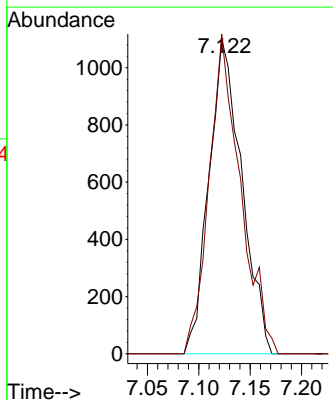
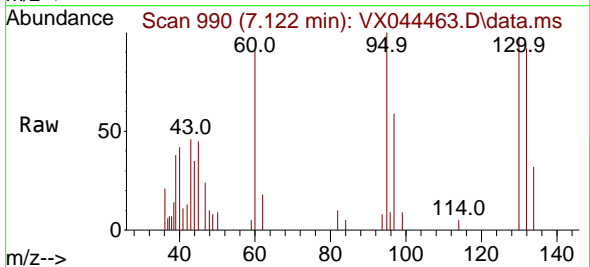


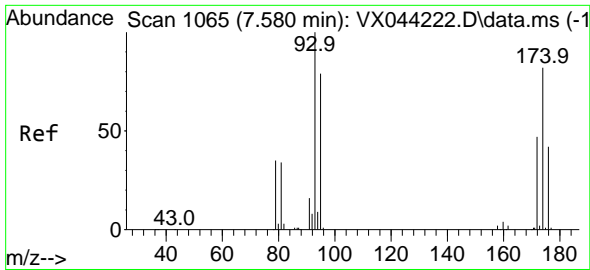
Tgt Ion: 43 Resp: 77071
 Ion Ratio Lower Upper
 43 100
 61 18.8 14.2 21.2
 87 12.7 10.2 15.2



#44
 Trichloroethene
 Concen: 1.665 ug/l
 RT: 7.122 min Scan# 990
 Delta R.T. -0.000 min
 Lab File: VX044463.D
 Acq: 20 Dec 2024 19:26

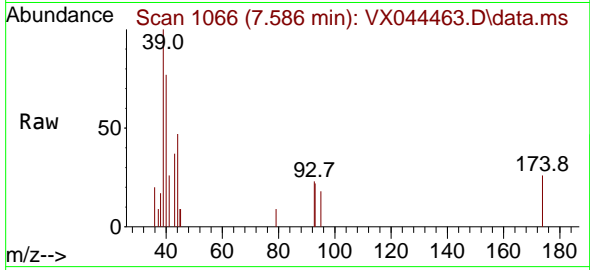
Tgt Ion:130 Resp: 2438
 Ion Ratio Lower Upper
 130 100
 95 101.6 0.0 201.4



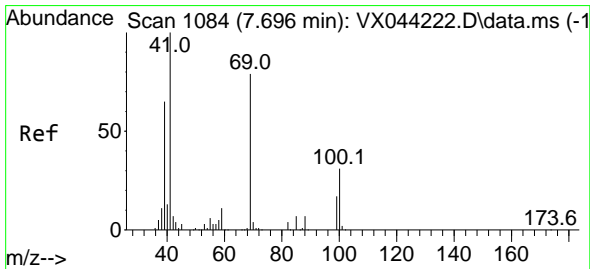
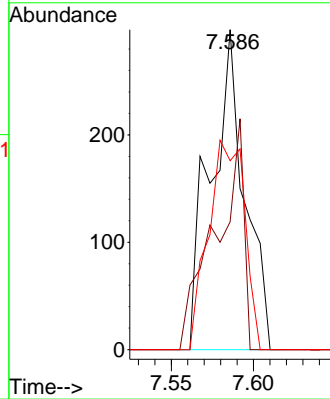
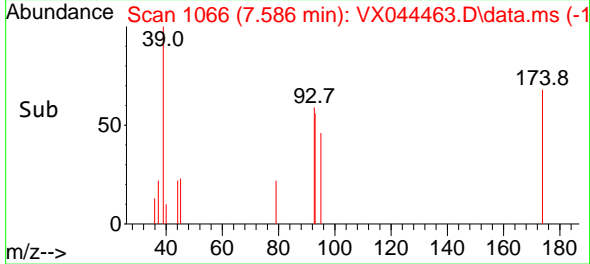


#46
 Dibromomethane
 Concen: 0.368 ug/l
 RT: 7.586 min Scan# 1100
 Delta R.T. 0.006 min
 Lab File: VX044463.D
 Acq: 20 Dec 2024 19:26

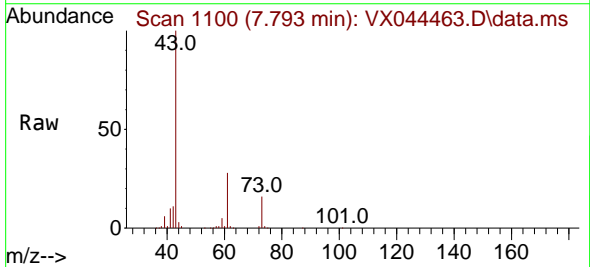
Instrument :
 MSVOA_X
 ClientSampleId :



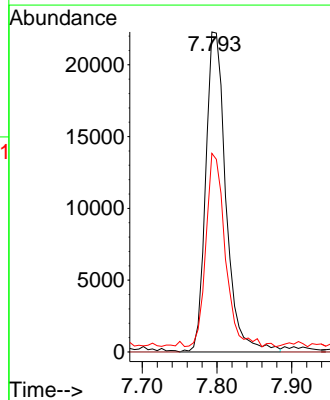
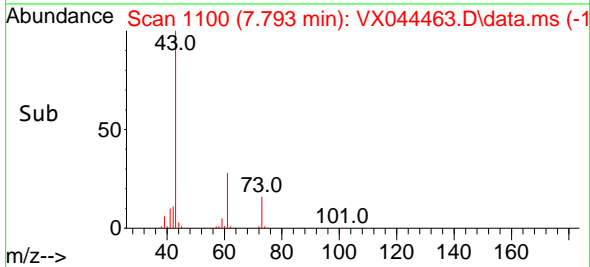
Tgt Ion: 93 Resp: 428
 Ion Ratio Lower Upper
 93 100
 95 58.6 65.4 98.2#
 174 69.6 67.9 101.9

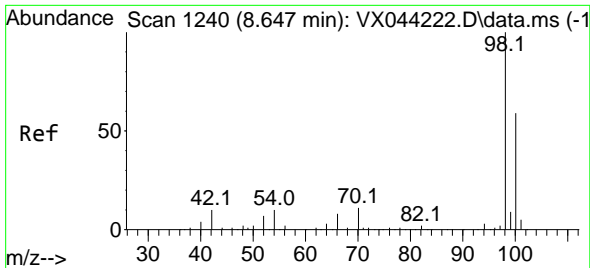


#48
 Methyl methacrylate
 Concen: 23.125 ug/l
 RT: 7.793 min Scan# 1100
 Delta R.T. 0.097 min
 Lab File: VX044463.D
 Acq: 20 Dec 2024 19:26



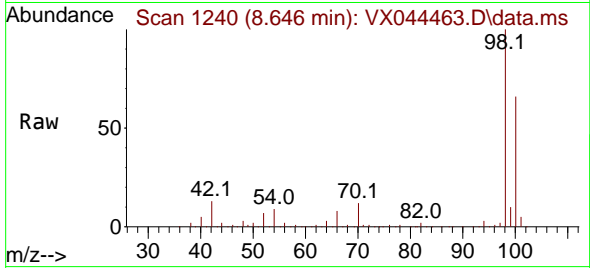
Tgt Ion: 41 Resp: 41945
 Ion Ratio Lower Upper
 41 100
 69 0.0 62.4 93.6#
 39 57.6 53.3 79.9



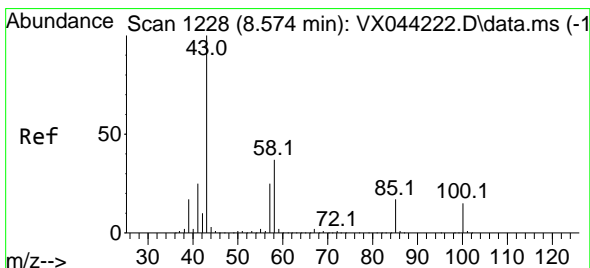
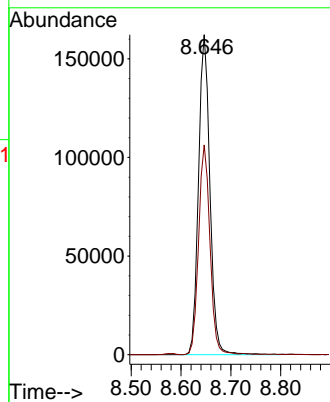
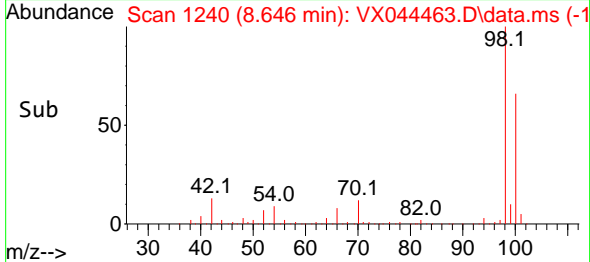


#50
 Toluene-d8
 Concen: 50.954 ug/l
 RT: 8.646 min Scan# 11
 Delta R.T. -0.000 min
 Lab File: VX044463.D
 Acq: 20 Dec 2024 19:26

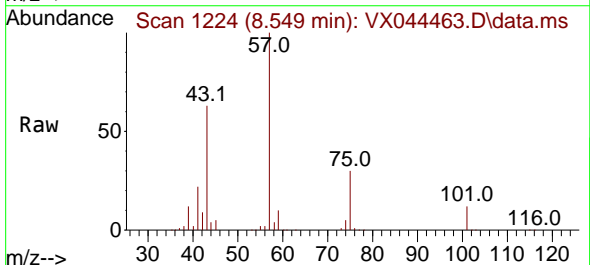
Instrument :
 MSVOA_X
 ClientSampleId :



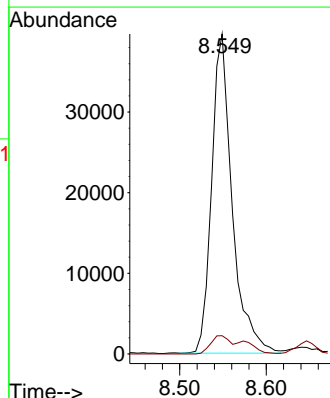
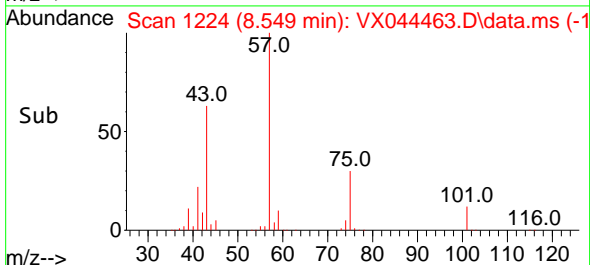
Tgt Ion: 98 Resp: 257204
 Ion Ratio Lower Upper
 98 100
 100 65.4 51.5 77.3

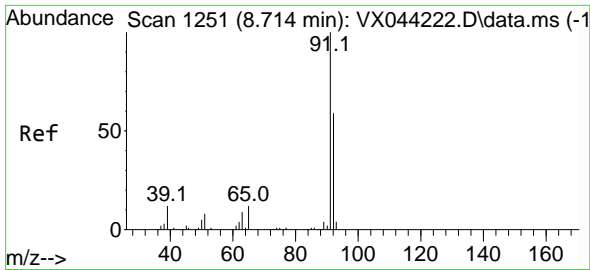


#51
 4-Methyl-2-Pentanone
 Concen: 27.075 ug/l
 RT: 8.549 min Scan# 1224
 Delta R.T. -0.025 min
 Lab File: VX044463.D
 Acq: 20 Dec 2024 19:26



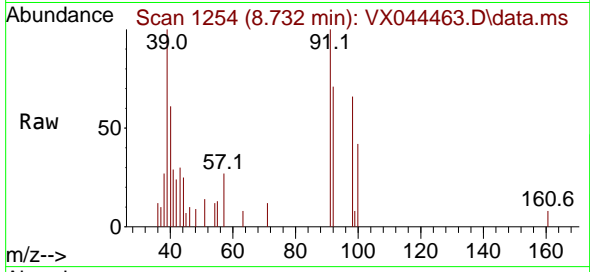
Tgt Ion: 43 Resp: 65051
 Ion Ratio Lower Upper
 43 100
 58 5.5 29.4 44.0#



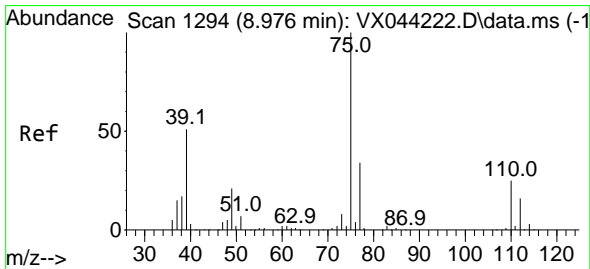
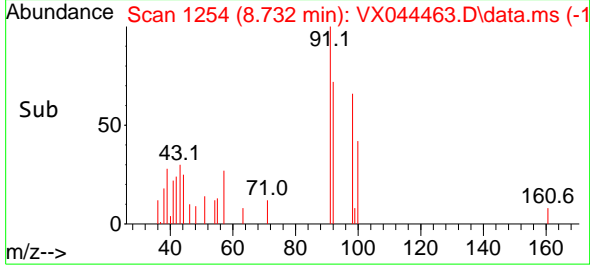
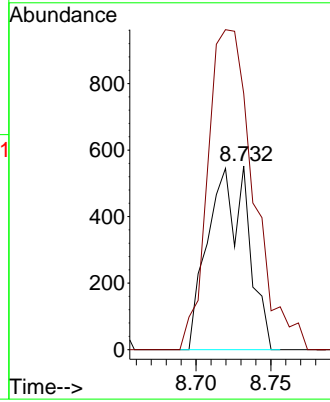


#52
 Toluene
 Concen: 0.275 ug/l
 RT: 8.732 min Scan# 1254
 Delta R.T. 0.018 min
 Lab File: VX044463.D
 Acq: 20 Dec 2024 19:26

Instrument : MSVOA_X
 ClientSampleId :

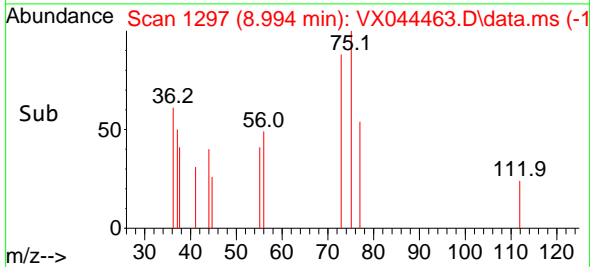
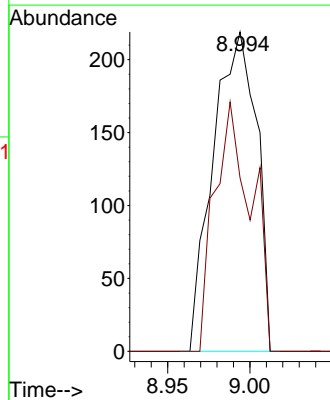
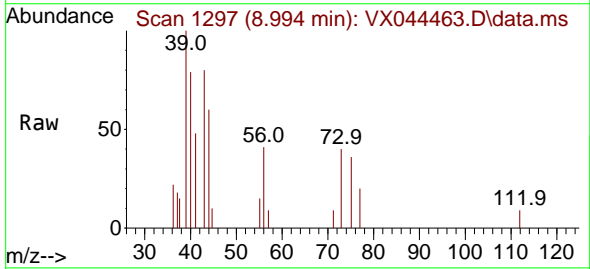


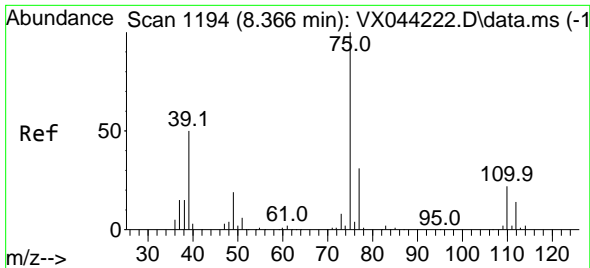
Tgt Ion: 92 Resp: 1013
 Ion Ratio Lower Upper
 92 100
 91 202.8 137.0 205.6



#53
 t-1,3-Dichloropropene
 Concen: 1.189 ug/l
 RT: 8.994 min Scan# 1297
 Delta R.T. 0.018 min
 Lab File: VX044463.D
 Acq: 20 Dec 2024 19:26

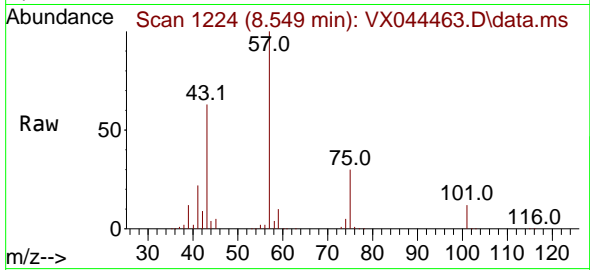
Tgt Ion: 75 Resp: 404
 Ion Ratio Lower Upper
 75 100
 77 54.3 27.2 40.8#



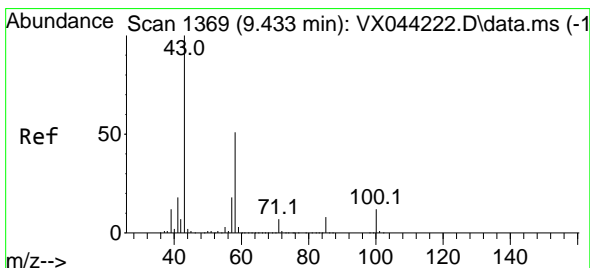
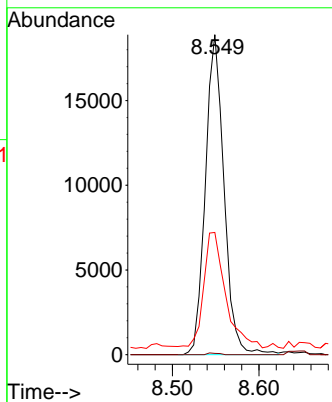
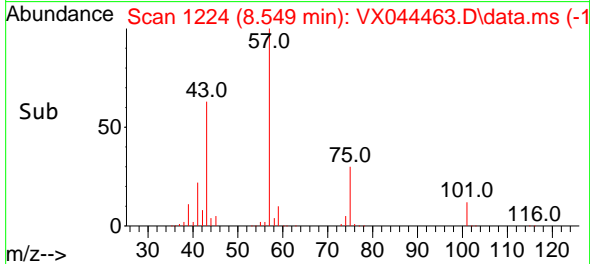


#54
 cis-1,3-Dichloropropene
 Concen: 12.889 ug/l
 RT: 8.549 min Scan# 1194
 Delta R.T. 0.183 min
 Lab File: VX044463.D
 Acq: 20 Dec 2024 19:26

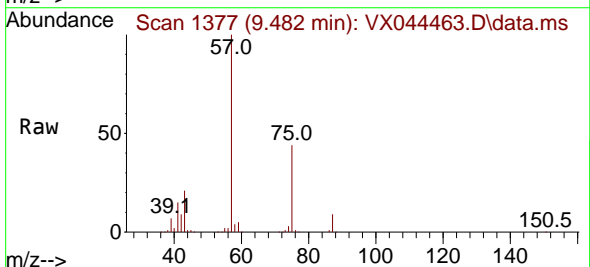
Instrument : MSVOA_X
 ClientSampleId :



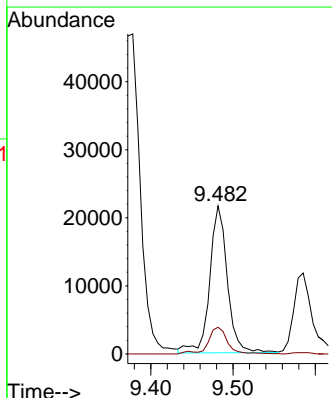
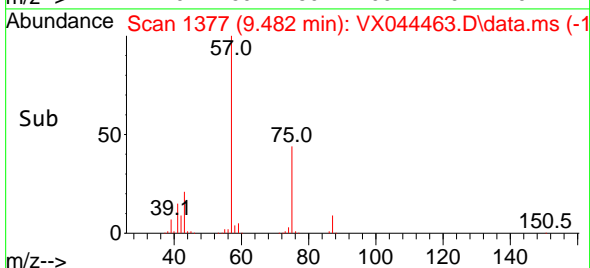
Tgt Ion: 75 Resp: 28208
 Ion Ratio Lower Upper
 75 100
 77 0.4 24.7 37.1#
 39 35.9 40.3 60.5#

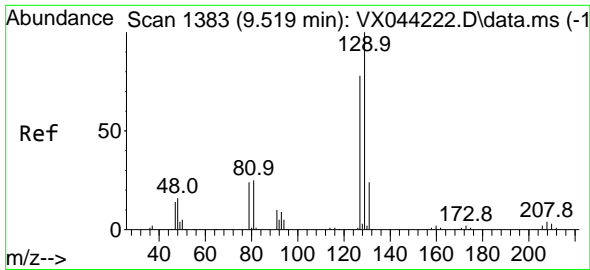


#59
 2-Hexanone
 Concen: 18.588 ug/l
 RT: 9.482 min Scan# 1377
 Delta R.T. 0.048 min
 Lab File: VX044463.D
 Acq: 20 Dec 2024 19:26



Tgt Ion: 43 Resp: 32325
 Ion Ratio Lower Upper
 43 100
 58 18.5 25.7 77.0#

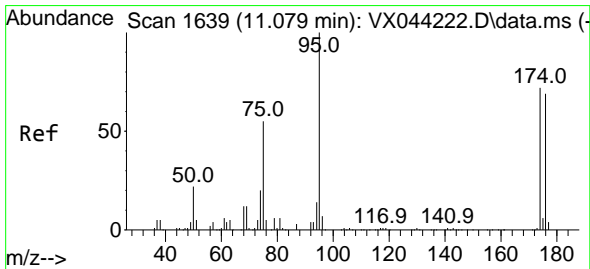
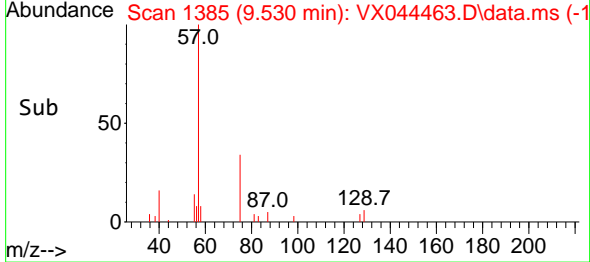
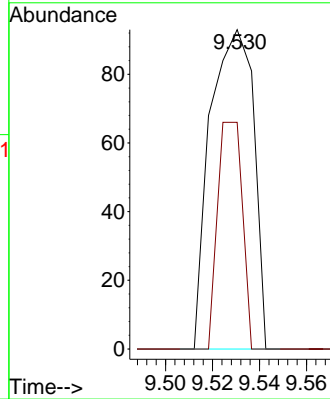
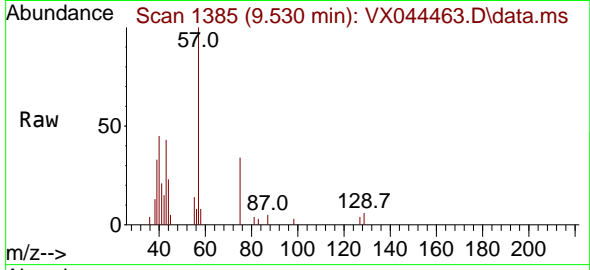




#60
 Dibromochloromethane
 Concen: 1.309 ug/l
 RT: 9.530 min Scan# 11
 Delta R.T. 0.012 min
 Lab File: VX044463.D
 Acq: 20 Dec 2024 19:26

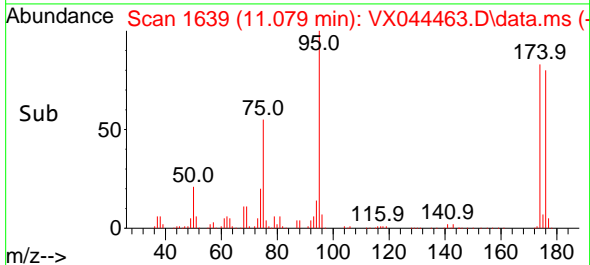
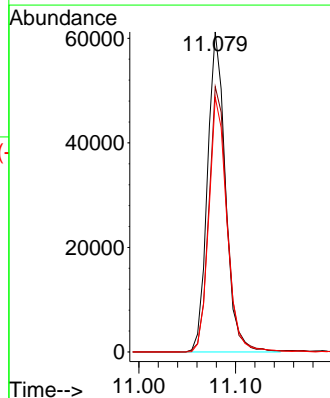
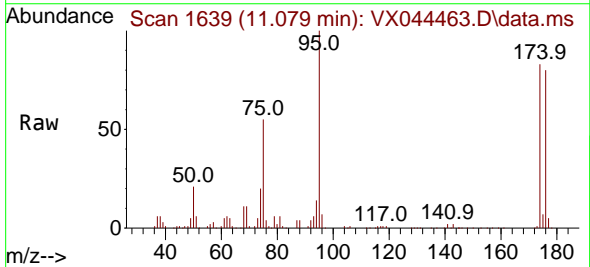
Instrument :
 MSVOA_X
 ClientSampleId :

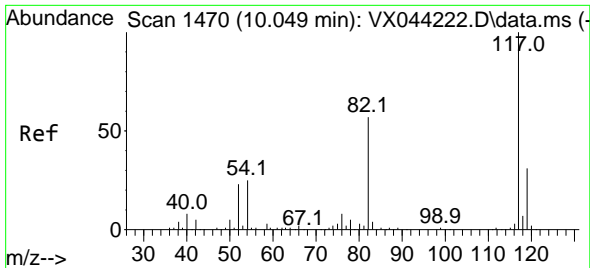
Tgt Ion:129 Resp: 119
 Ion Ratio Lower Upper
 129 100
 127 40.3 38.5 115.3



#62
 4-Bromofluorobenzene
 Concen: 44.923 ug/l
 RT: 11.079 min Scan# 1639
 Delta R.T. -0.000 min
 Lab File: VX044463.D
 Acq: 20 Dec 2024 19:26

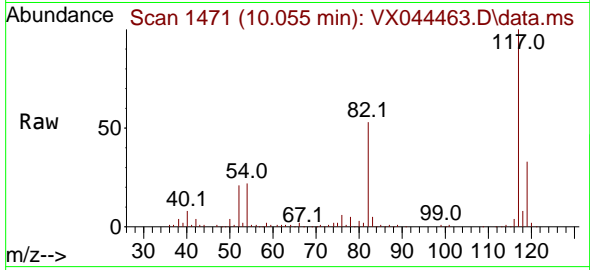
Tgt Ion: 95 Resp: 79235
 Ion Ratio Lower Upper
 95 100
 174 83.9 0.0 145.8
 176 80.1 0.0 137.8





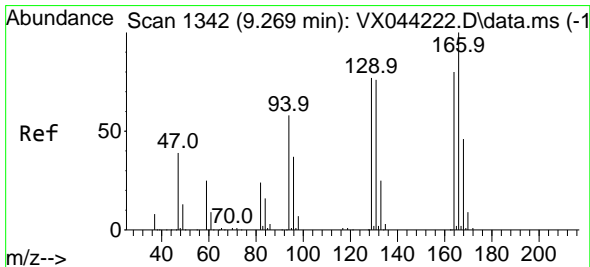
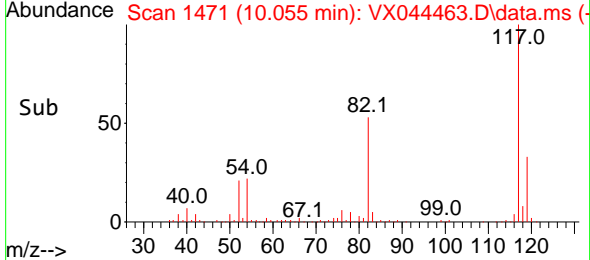
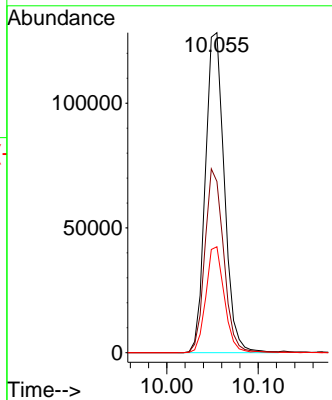
#63
 Chlorobenzene-d5
 Concen: 50.000 ug/l
 RT: 10.055 min Scan# 1471
 Delta R.T. 0.006 min
 Lab File: VX044463.D
 Acq: 20 Dec 2024 19:26

Instrument :
 MSVOA_X
 ClientSampleId :



Tgt Ion:117 Resp: 184635

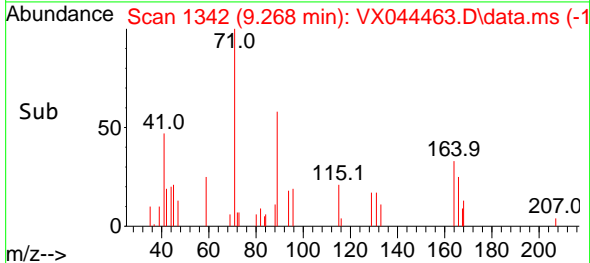
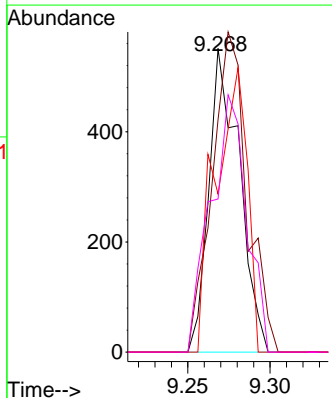
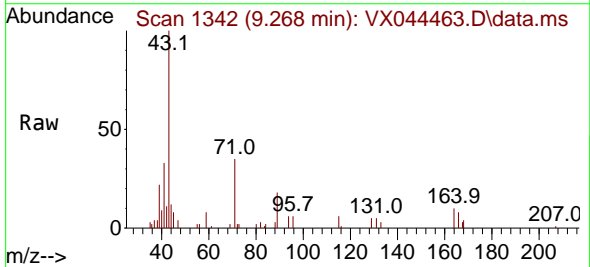
Ion	Ratio	Lower	Upper
117	100		
82	53.5	45.8	68.8
119	33.1	25.0	37.4

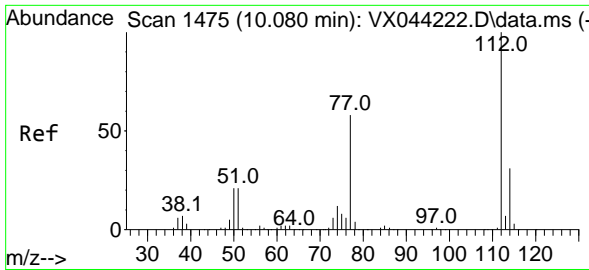


#64
 Tetrachloroethene
 Concen: 0.577 ug/l
 RT: 9.268 min Scan# 1342
 Delta R.T. -0.000 min
 Lab File: VX044463.D
 Acq: 20 Dec 2024 19:26

Tgt Ion:164 Resp: 707

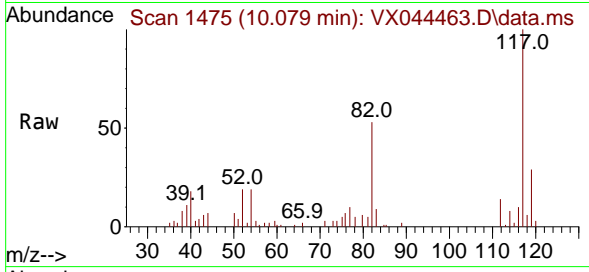
Ion	Ratio	Lower	Upper
164	100		
166	76.6	100.4	150.6#
129	52.1	77.2	115.8#
131	50.5	76.2	114.2#



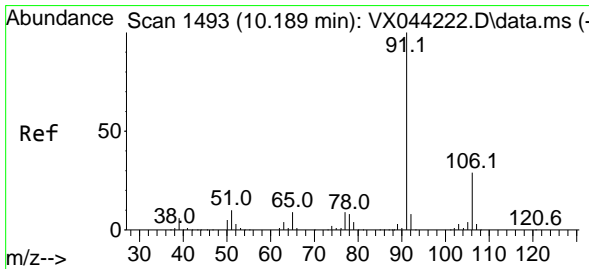
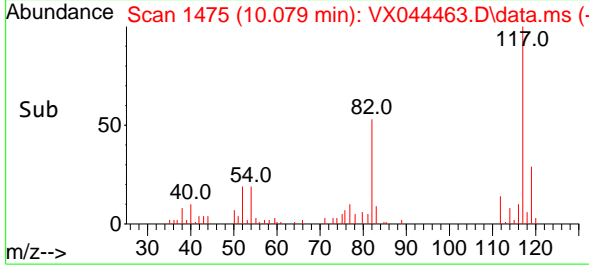
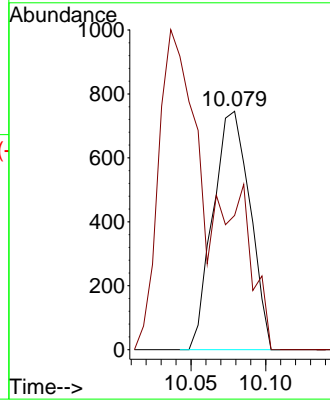


#65
 Chlorobenzene
 Concen: 0.324 ug/l
 RT: 10.079 min Scan# 1475
 Delta R.T. -0.000 min
 Lab File: VX044463.D
 Acq: 20 Dec 2024 19:26

Instrument : MSVOA_X
 ClientSampleId :

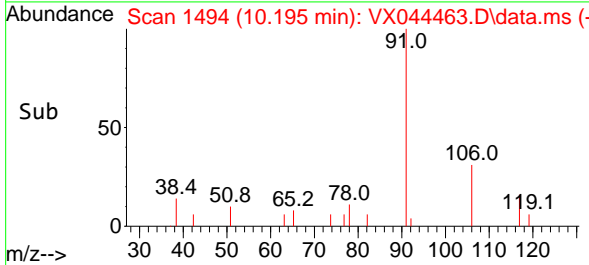
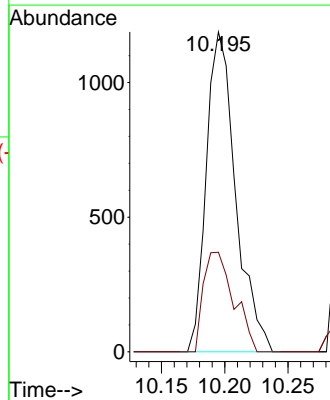
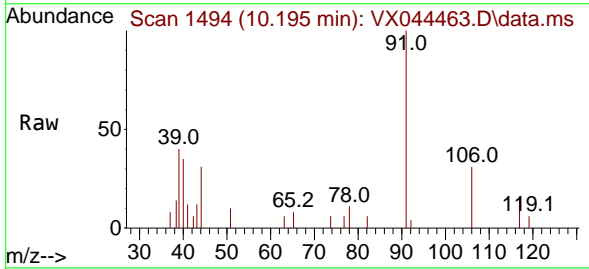


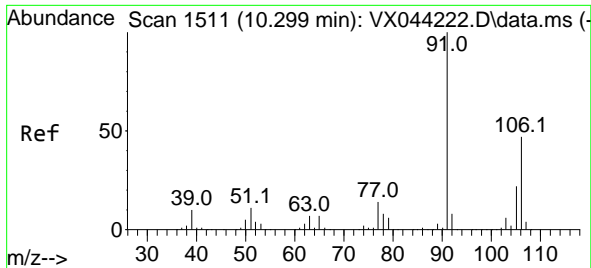
Tgt Ion:112 Resp: 1281
 Ion Ratio Lower Upper
 112 100
 114 56.3 25.0 37.6#



#67
 Ethyl Benzene
 Concen: 0.280 ug/l
 RT: 10.195 min Scan# 1494
 Delta R.T. 0.006 min
 Lab File: VX044463.D
 Acq: 20 Dec 2024 19:26

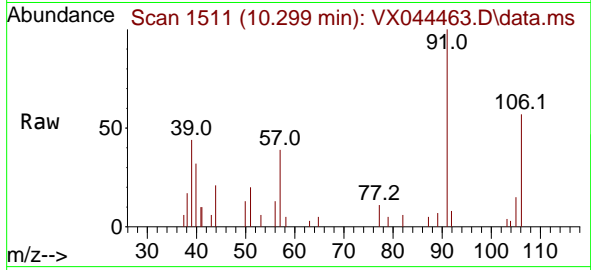
Tgt Ion: 91 Resp: 1915
 Ion Ratio Lower Upper
 91 100
 106 31.1 23.5 35.3



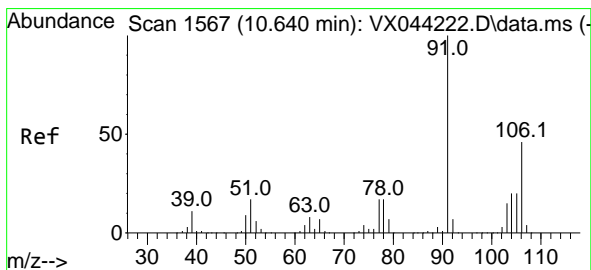
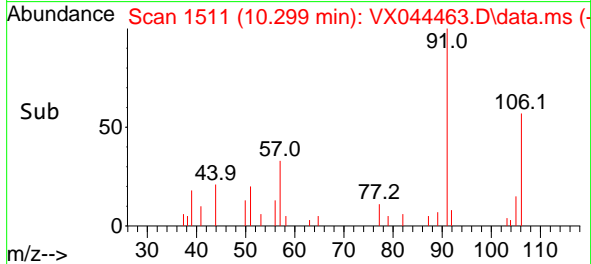
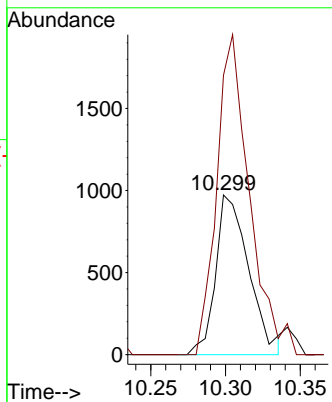


#68
 m/p-Xylenes
 Concen: 0.596 ug/l
 RT: 10.299 min Scan# 1511
 Delta R.T. -0.000 min
 Lab File: VX044463.D
 Acq: 20 Dec 2024 19:26

Instrument : MSVOA_X
 ClientSampleId :

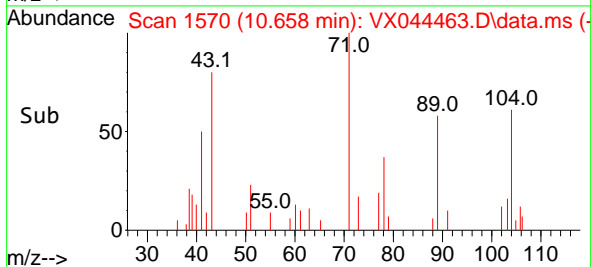
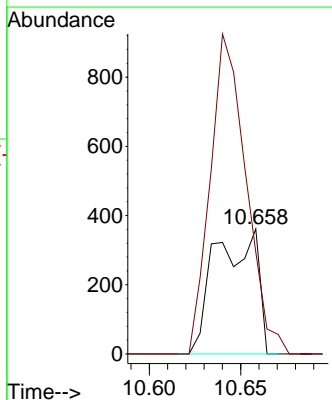
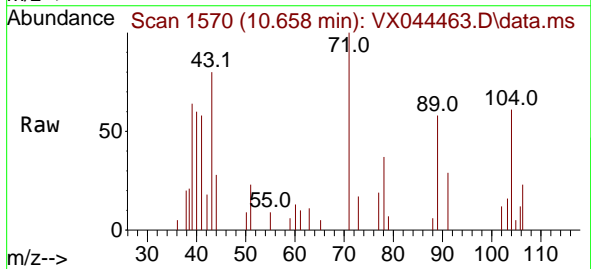


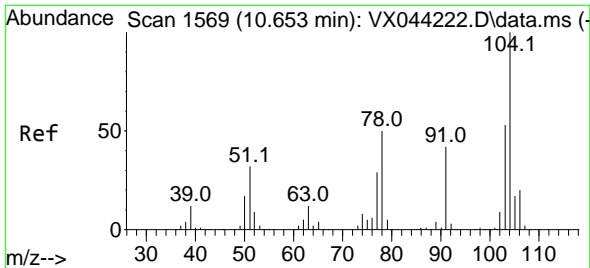
Tgt Ion:106 Resp: 1496
 Ion Ratio Lower Upper
 106 100
 91 198.5 170.2 255.2



#69
 o-Xylene
 Concen: 0.229 ug/l
 RT: 10.658 min Scan# 1570
 Delta R.T. 0.018 min
 Lab File: VX044463.D
 Acq: 20 Dec 2024 19:26

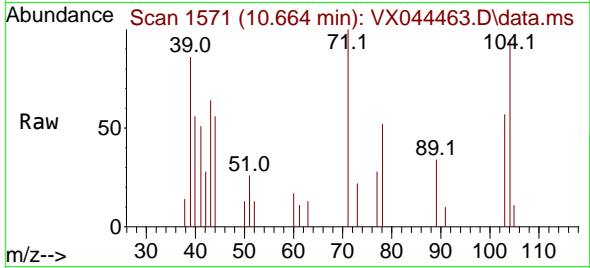
Tgt Ion:106 Resp: 581
 Ion Ratio Lower Upper
 106 100
 91 217.7 112.3 337.0





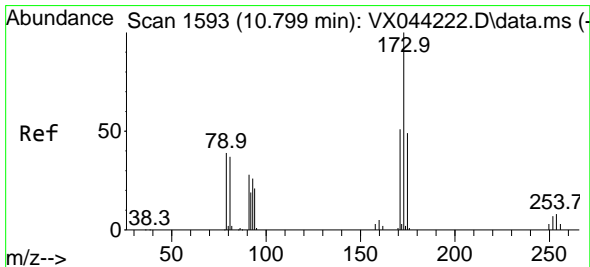
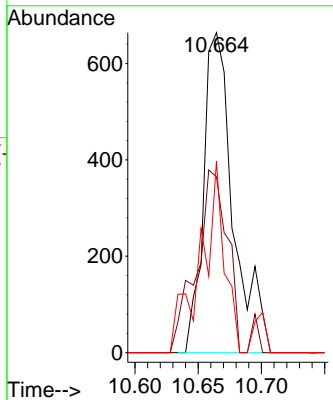
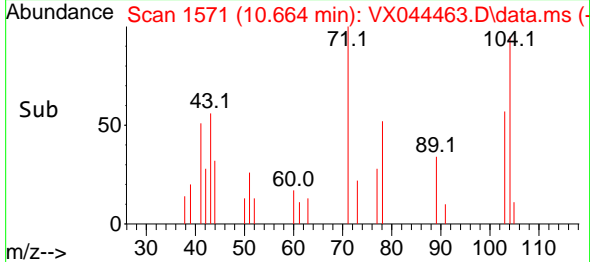
#70
 Styrene
 Concen: 0.266 ug/l
 RT: 10.664 min Scan# 1571
 Delta R.T. 0.012 min
 Lab File: VX044463.D
 Acq: 20 Dec 2024 19:26

Instrument : MSVOA_X
 ClientSampleId :

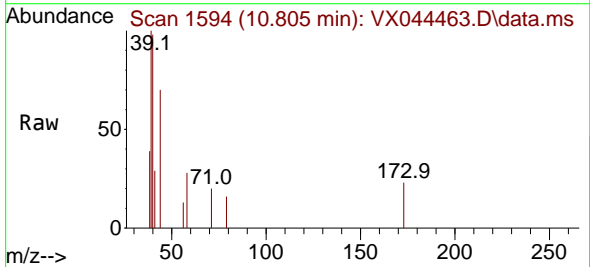


Tgt Ion:104 Resp: 1084

Ion	Ratio	Lower	Upper
104	100		
78	59.3	44.6	67.0
103	48.1	45.4	68.0

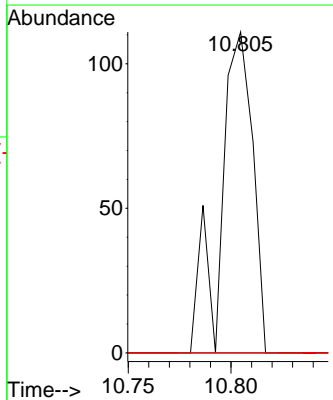
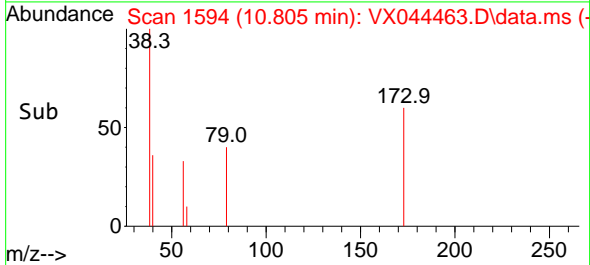


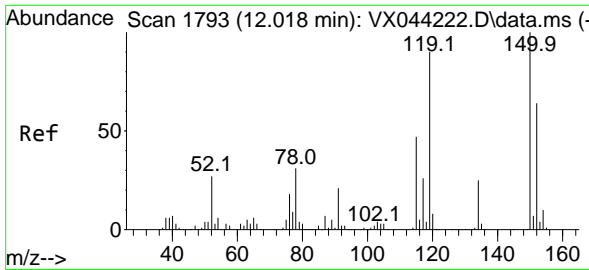
#71
 Bromoform
 Concen: 1.378 ug/l
 RT: 10.805 min Scan# 1594
 Delta R.T. 0.006 min
 Lab File: VX044463.D
 Acq: 20 Dec 2024 19:26



Tgt Ion:173 Resp: 121

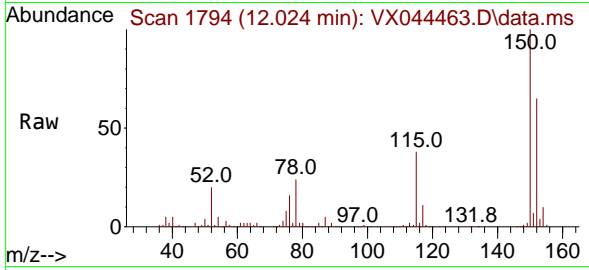
Ion	Ratio	Lower	Upper
173	100		
175	0.0	23.8	71.4#
254	0.0	0.0	0.0



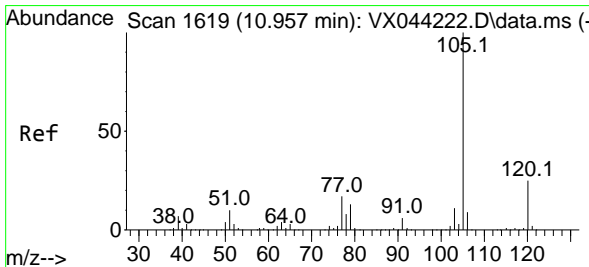
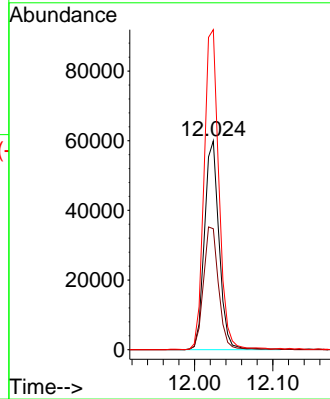
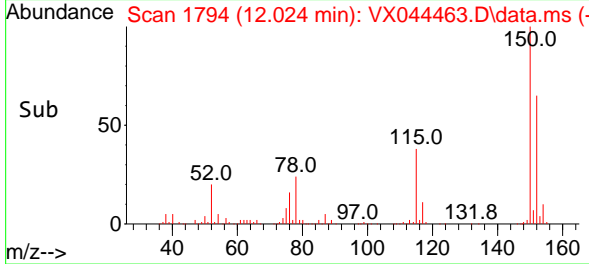


#72
 1,4-Dichlorobenzene-d4
 Concen: 50.000 ug/l
 RT: 12.024 min Scan# 1
 Delta R.T. 0.006 min
 Lab File: VX044463.D
 Acq: 20 Dec 2024 19:26

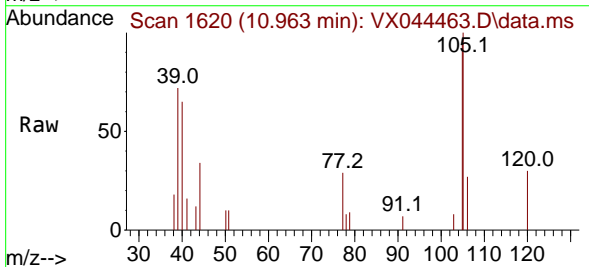
Instrument :
 MSVOA_X
 ClientSampleId :



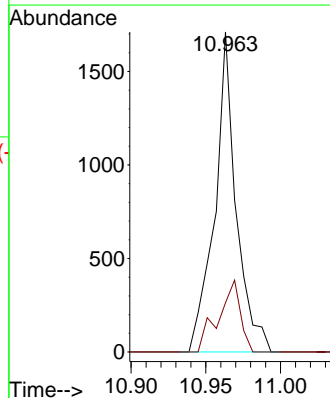
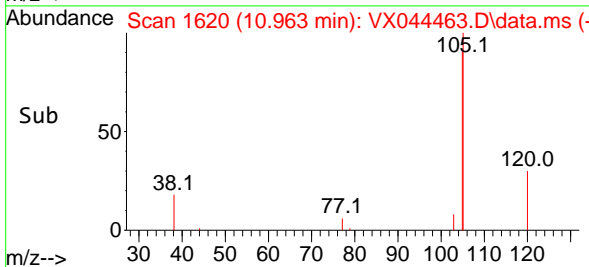
Tgt Ion:152 Resp: 77635
 Ion Ratio Lower Upper
 152 100
 115 60.9 44.5 133.3
 150 155.8 0.0 353.8

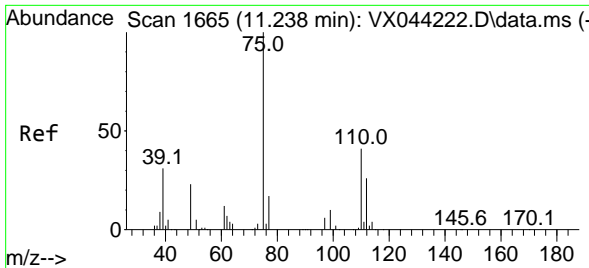


#73
 Isopropylbenzene
 Concen: 0.286 ug/l
 RT: 10.963 min Scan# 1620
 Delta R.T. 0.006 min
 Lab File: VX044463.D
 Acq: 20 Dec 2024 19:26



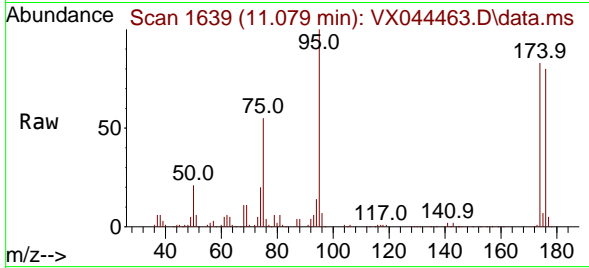
Tgt Ion:105 Resp: 1698
 Ion Ratio Lower Upper
 105 100
 120 23.1 13.1 39.3



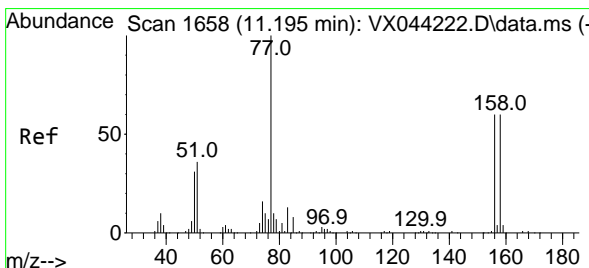
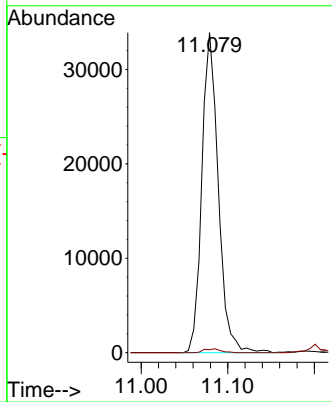
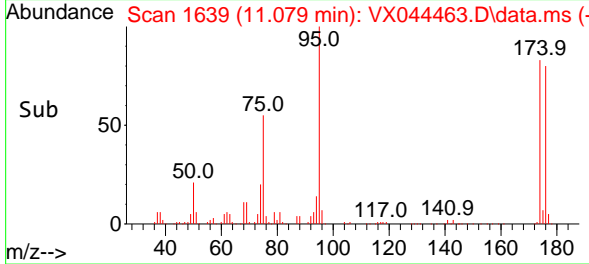


#76
 1,2,3-Trichloropropane
 Concen: 25.821 ug/l
 RT: 11.079 min Scan# 1639
 Delta R.T. -0.159 min
 Lab File: VX044463.D
 Acq: 20 Dec 2024 19:26

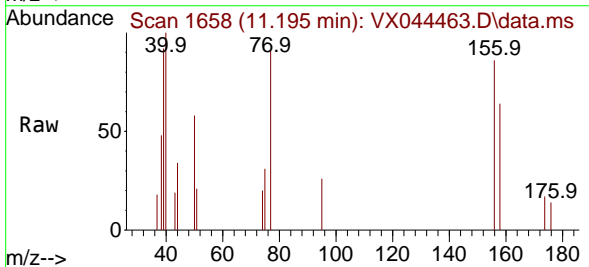
Instrument : MSVOA_X
 ClientSampleId :



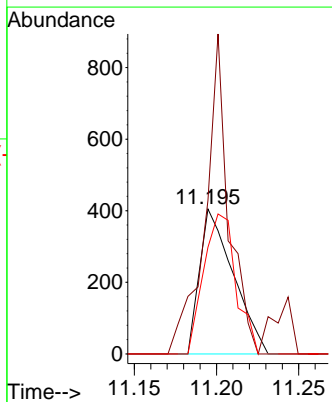
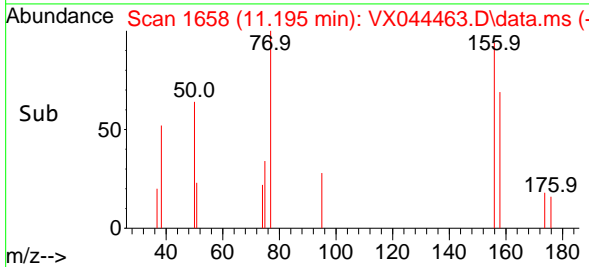
Tgt Ion: 75 Resp: 44759
 Ion Ratio Lower Upper
 75 100
 77 1.2 20.9 62.7#

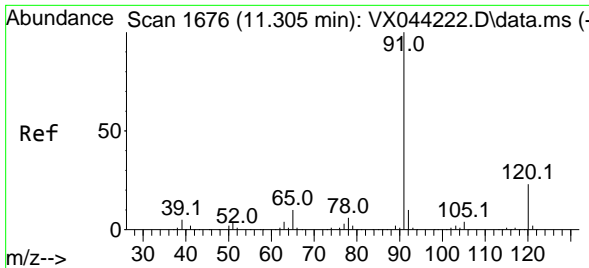


#77
 Bromobenzene
 Concen: 0.399 ug/l
 RT: 11.195 min Scan# 1658
 Delta R.T. -0.000 min
 Lab File: VX044463.D
 Acq: 20 Dec 2024 19:26



Tgt Ion: 156 Resp: 575
 Ion Ratio Lower Upper
 156 100
 77 155.0 82.6 247.8
 158 92.3 48.8 146.4

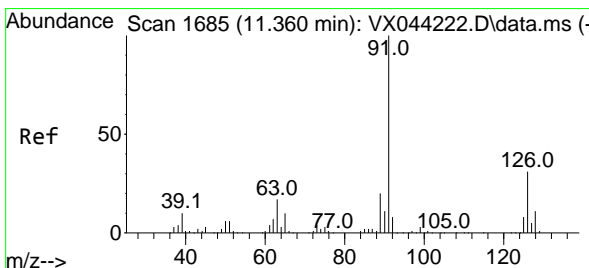
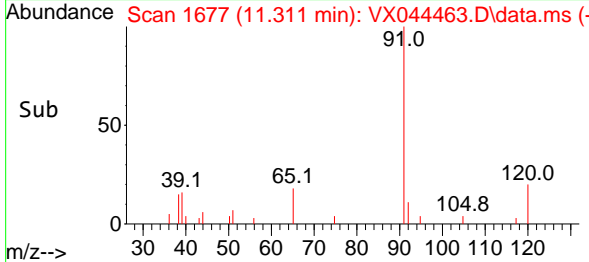
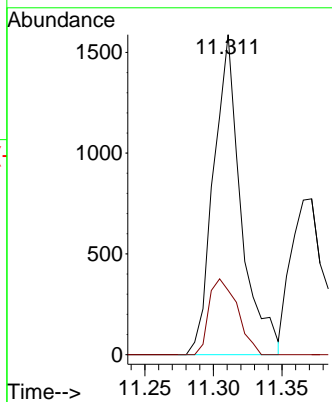
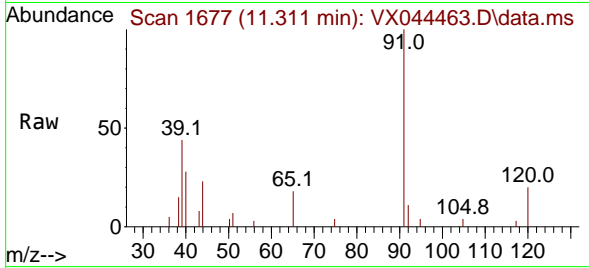




#78
 n-propylbenzene
 Concen: 0.337 ug/l
 RT: 11.311 min Scan# 1677
 Delta R.T. 0.006 min
 Lab File: VX044463.D
 Acq: 20 Dec 2024 19:26

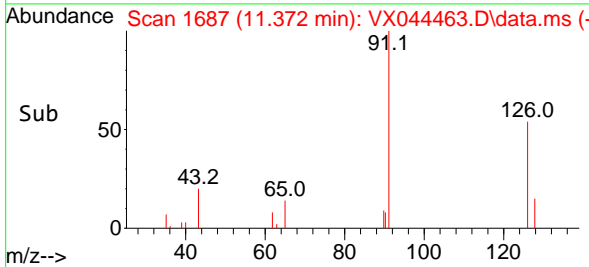
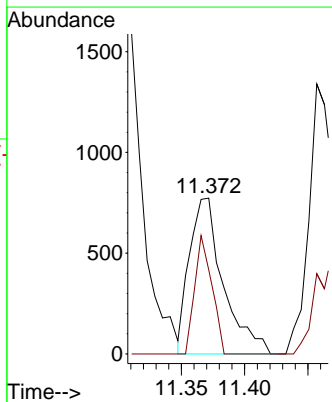
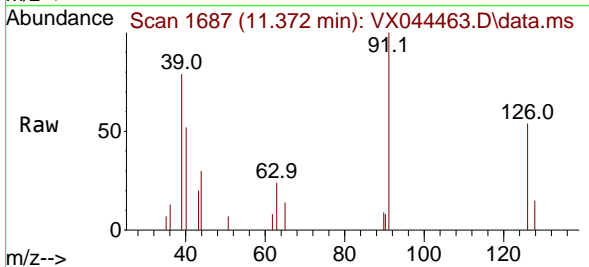
Instrument : MSVOA_X
 ClientSampleId :

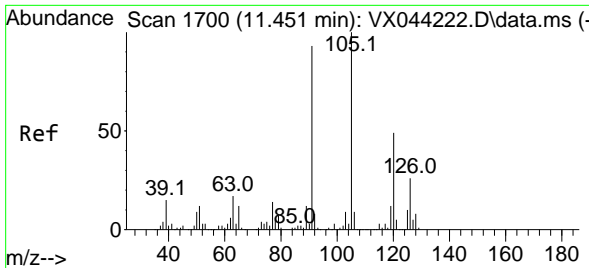
Tgt Ion: 91 Resp: 2217
 Ion Ratio Lower Upper
 91 100
 120 24.4 11.0 33.0



#79
 2-Chlorotoluene
 Concen: 0.339 ug/l
 RT: 11.372 min Scan# 1687
 Delta R.T. 0.012 min
 Lab File: VX044463.D
 Acq: 20 Dec 2024 19:26

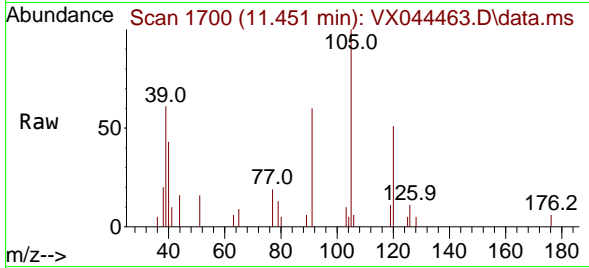
Tgt Ion: 91 Resp: 1439
 Ion Ratio Lower Upper
 91 100
 126 38.6 16.4 49.1



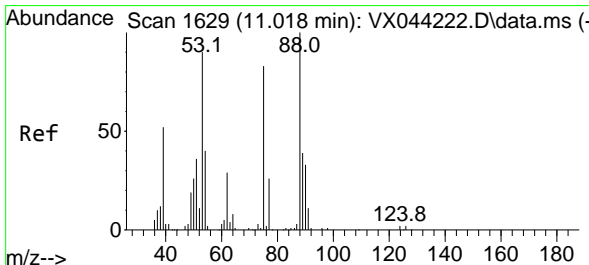
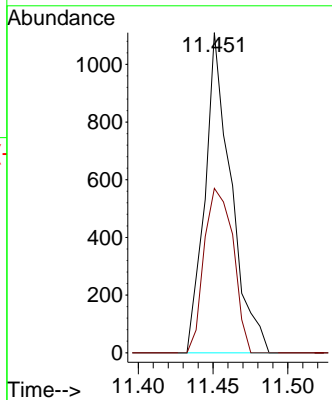
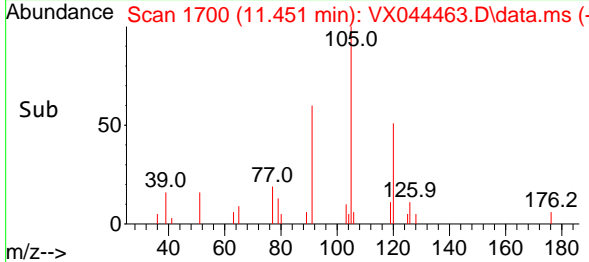


#80
 1,3,5-Trimethylbenzene
 Concen: 0.273 ug/l
 RT: 11.451 min Scan# 11
 Delta R.T. -0.000 min
 Lab File: VX044463.D
 Acq: 20 Dec 2024 19:26

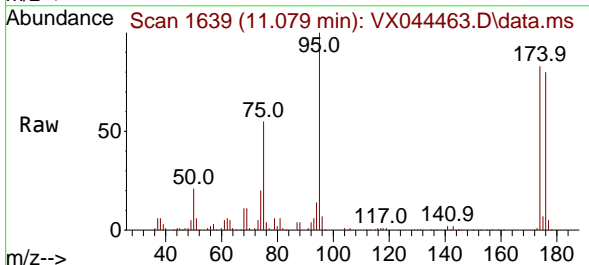
Instrument : MSVOA_X
 ClientSampleId :



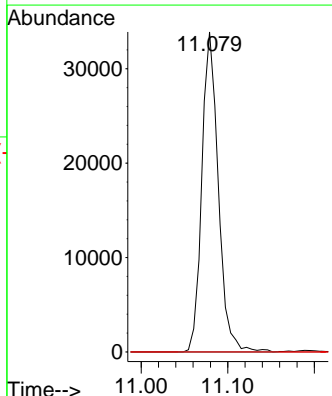
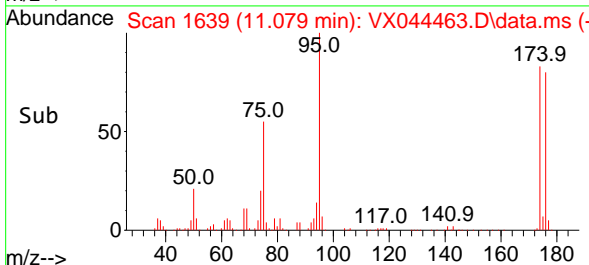
Tgt Ion:105 Resp: 1344
 Ion Ratio Lower Upper
 105 100
 120 57.1 23.8 71.4

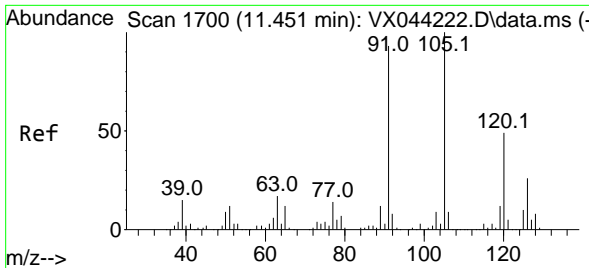


#81
 trans-1,4-Dichloro-2-butene
 Concen: 71.315 ug/l
 RT: 11.079 min Scan# 1639
 Delta R.T. 0.061 min
 Lab File: VX044463.D
 Acq: 20 Dec 2024 19:26



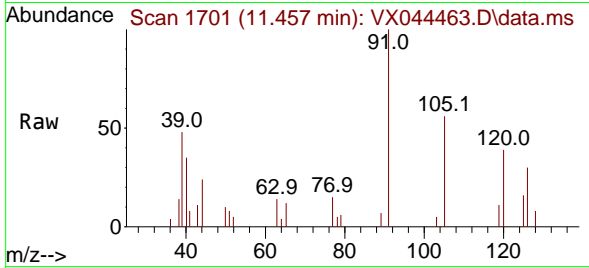
Tgt Ion: 75 Resp: 44759
 Ion Ratio Lower Upper
 75 100
 53 0.0 93.6 140.4#
 89 0.0 37.3 55.9#



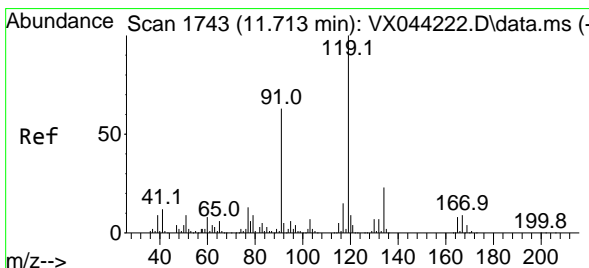
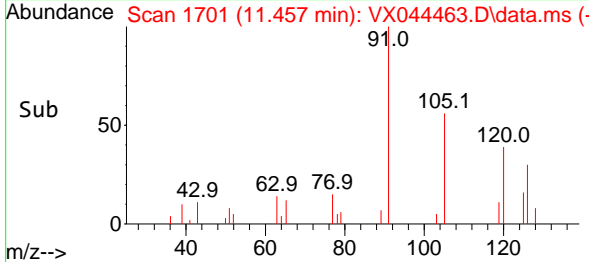
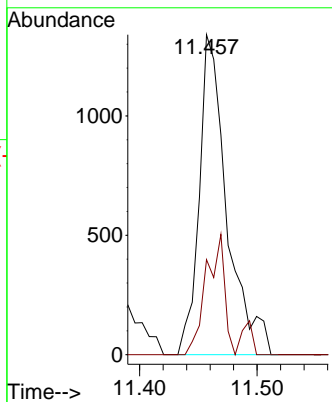


#82
 4-Chlorotoluene
 Concen: 0.467 ug/l
 RT: 11.457 min Scan# 1701
 Delta R.T. 0.006 min
 Lab File: VX044463.D
 Acq: 20 Dec 2024 19:26

Instrument : MSVOA_X
 ClientSampleId :

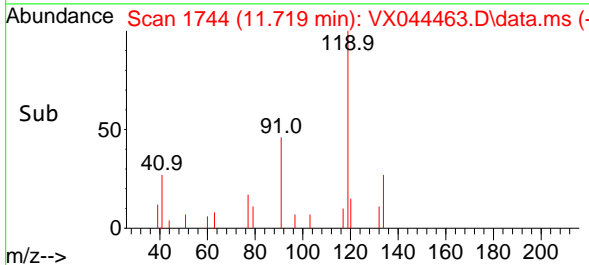
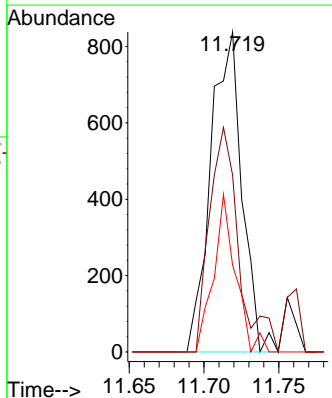
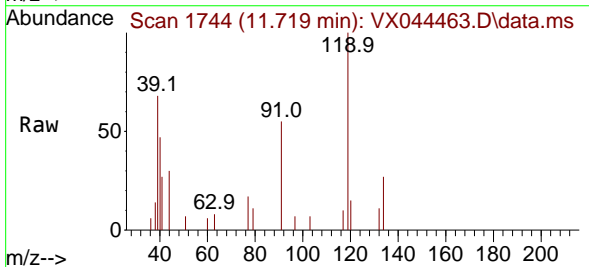


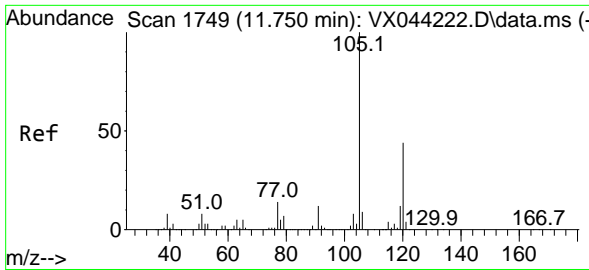
Tgt Ion: 91 Resp: 2196
 Ion Ratio Lower Upper
 91 100
 126 25.0 14.5 43.5



#83
 tert-Butylbenzene
 Concen: 0.250 ug/l
 RT: 11.719 min Scan# 1744
 Delta R.T. 0.006 min
 Lab File: VX044463.D
 Acq: 20 Dec 2024 19:26

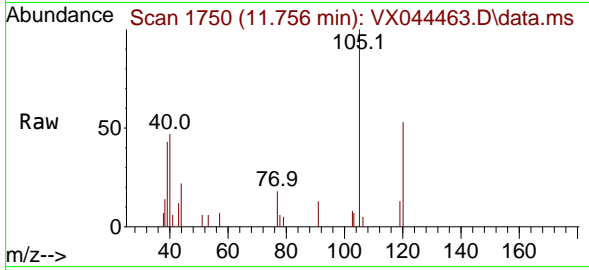
Tgt Ion: 119 Resp: 1216
 Ion Ratio Lower Upper
 119 100
 91 65.6 30.9 92.5
 134 34.6 11.5 34.4#



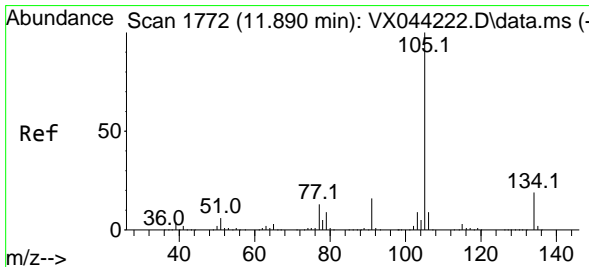
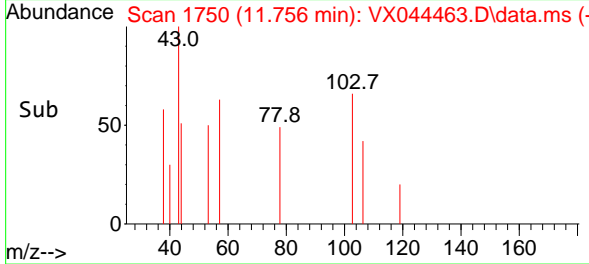
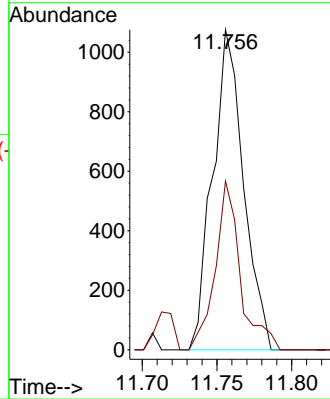


#84
 1,2,4-Trimethylbenzene
 Concen: 0.319 ug/l
 RT: 11.756 min Scan# 1750
 Delta R.T. 0.006 min
 Lab File: VX044463.D
 Acq: 20 Dec 2024 19:26

Instrument :
 MSVOA_X
 ClientSampleId :

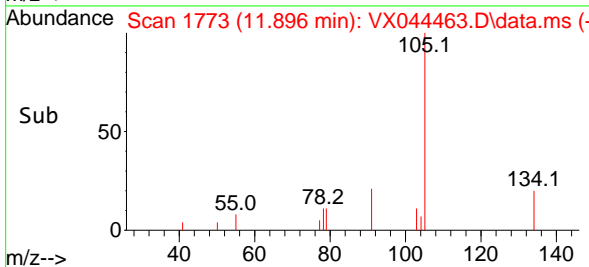
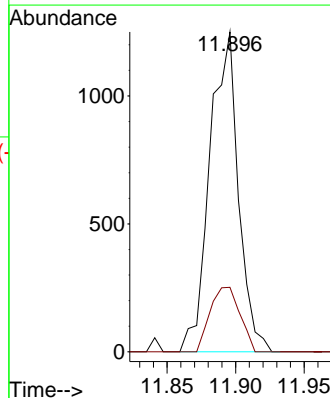
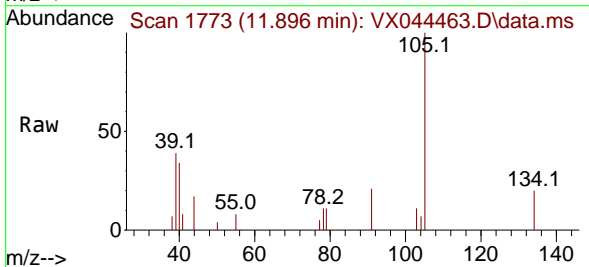


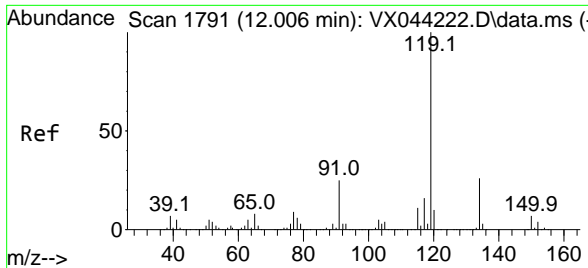
Tgt Ion:105 Resp: 1543
 Ion Ratio Lower Upper
 105 100
 120 42.8 21.7 65.1



#85
 sec-Butylbenzene
 Concen: 0.307 ug/l
 RT: 11.896 min Scan# 1773
 Delta R.T. 0.006 min
 Lab File: VX044463.D
 Acq: 20 Dec 2024 19:26

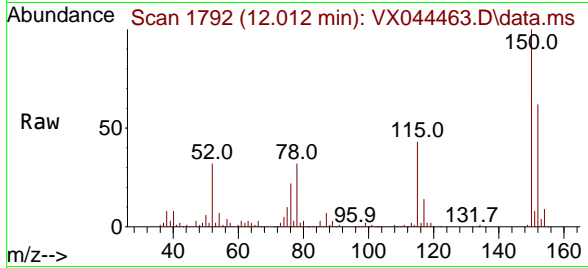
Tgt Ion:105 Resp: 1816
 Ion Ratio Lower Upper
 105 100
 134 21.0 9.8 29.4



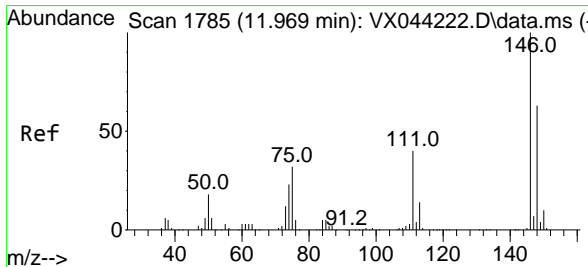
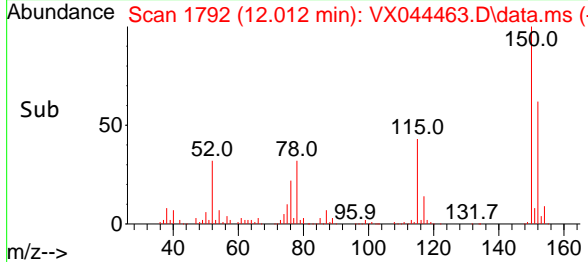
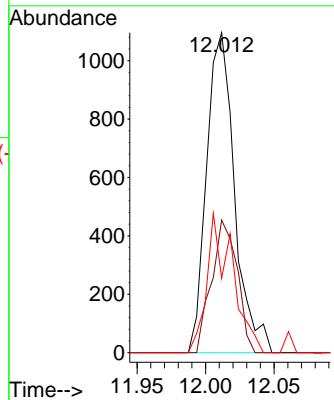


#86
 p-Isopropyltoluene
 Concen: 0.316 ug/l
 RT: 12.012 min Scan# 1792
 Delta R.T. 0.006 min
 Lab File: VX044463.D
 Acq: 20 Dec 2024 19:26

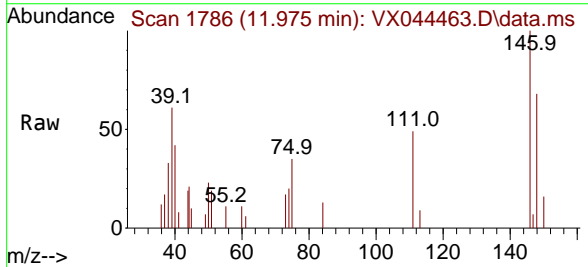
Instrument : MSVOA_X
 ClientSampleId :



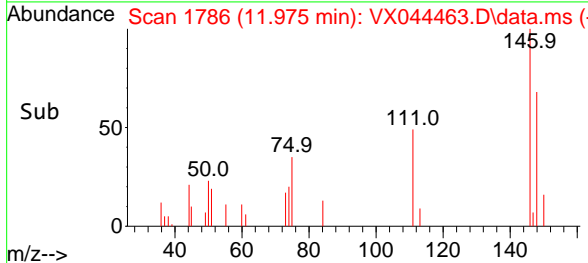
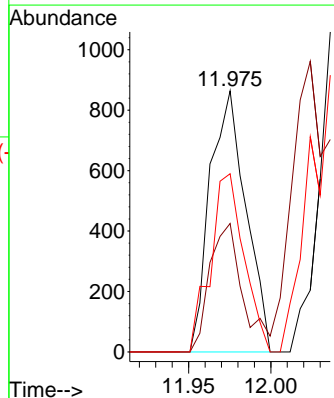
Tgt Ion:119 Resp: 1556
 Ion Ratio Lower Upper
 119 100
 134 37.9 12.8 38.4
 91 39.6 13.0 39.0#

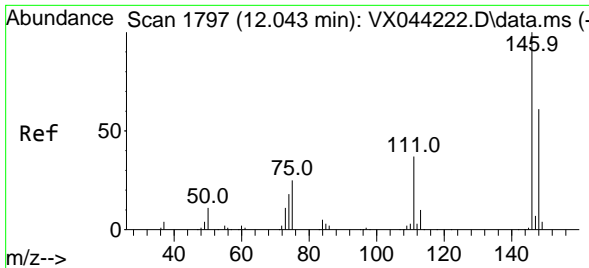


#87
 1,3-Dichlorobenzene
 Concen: 0.520 ug/l
 RT: 11.975 min Scan# 1786
 Delta R.T. 0.006 min
 Lab File: VX044463.D
 Acq: 20 Dec 2024 19:26



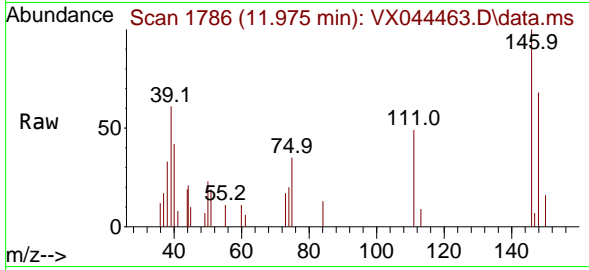
Tgt Ion:146 Resp: 1309
 Ion Ratio Lower Upper
 146 100
 111 45.5 21.4 64.2
 148 63.9 31.7 95.1



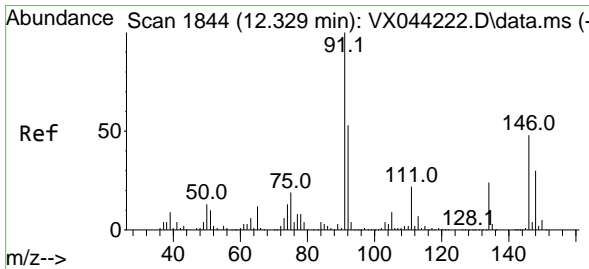
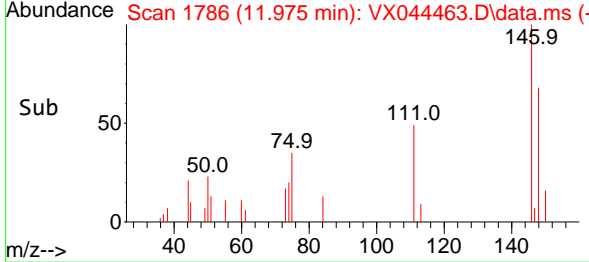
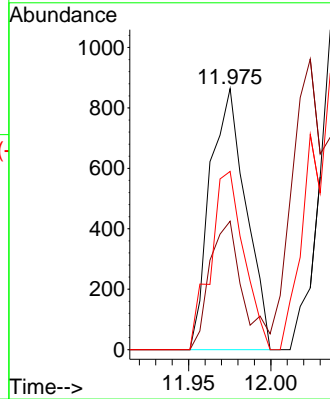


#88
 1,4-Dichlorobenzene
 Concen: 0.506 ug/l
 RT: 11.975 min Scan# 1786
 Delta R.T. -0.067 min
 Lab File: VX044463.D
 Acq: 20 Dec 2024 19:26

Instrument : MSVOA_X
 ClientSampleId :

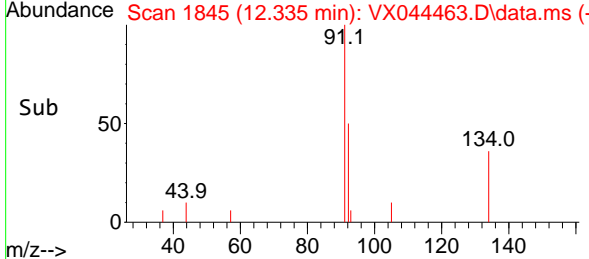
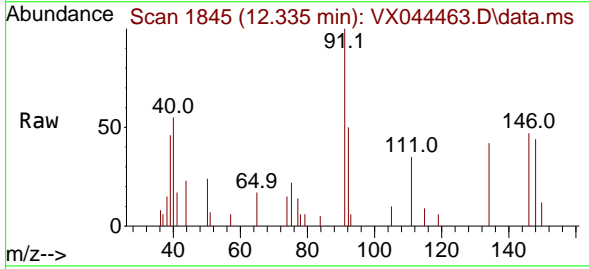
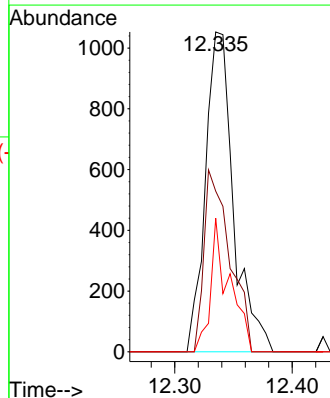


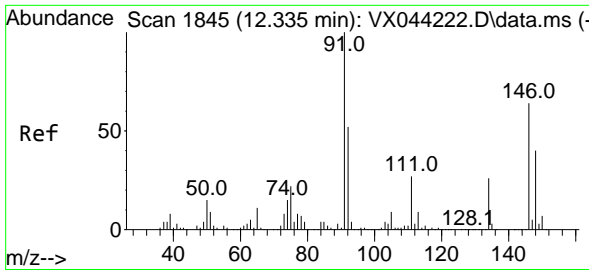
Tgt Ion:146 Resp: 1309
 Ion Ratio Lower Upper
 146 100
 111 45.5 21.0 63.0
 148 63.9 32.3 96.8



#89
 n-Butylbenzene
 Concen: 0.424 ug/l
 RT: 12.335 min Scan# 1845
 Delta R.T. 0.006 min
 Lab File: VX044463.D
 Acq: 20 Dec 2024 19:26

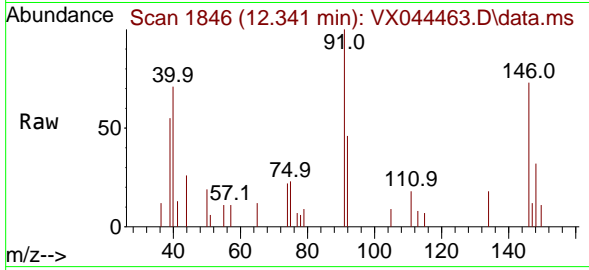
Tgt Ion: 91 Resp: 1753
 Ion Ratio Lower Upper
 91 100
 92 52.5 26.6 79.7
 134 27.7 12.6 37.8



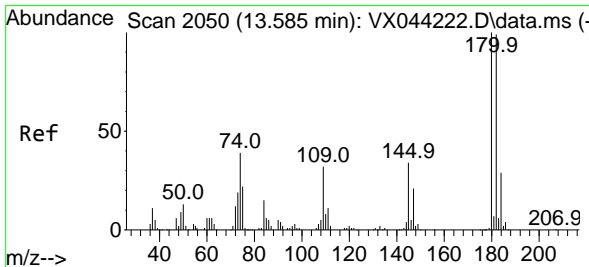
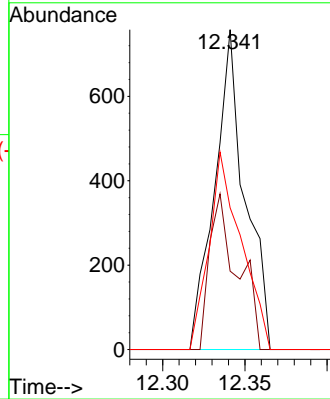
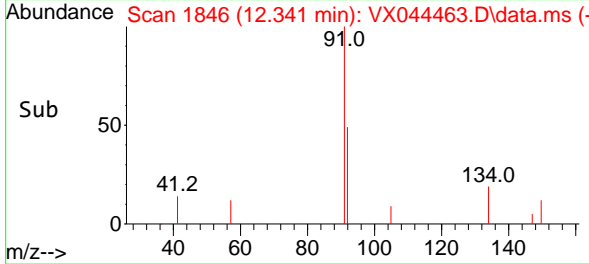


#91
 1,2-Dichlorobenzene
 Concen: 0.374 ug/l
 RT: 12.341 min Scan# 1846
 Delta R.T. 0.006 min
 Lab File: VX044463.D
 Acq: 20 Dec 2024 19:26

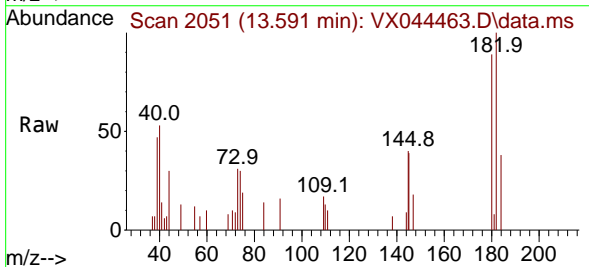
Instrument : MSVOA_X
 ClientSampleId :



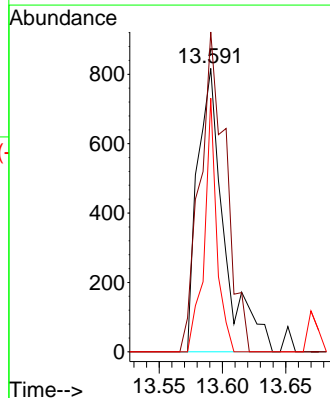
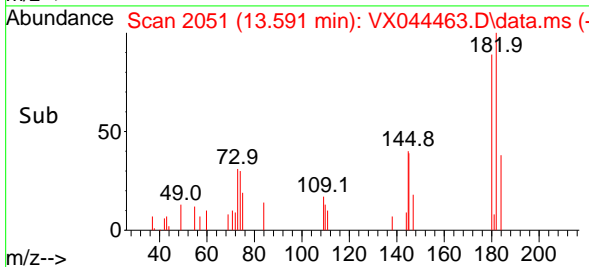
Tgt Ion:146 Resp: 978
 Ion Ratio Lower Upper
 146 100
 111 44.6 21.4 64.3
 148 65.1 31.6 95.0

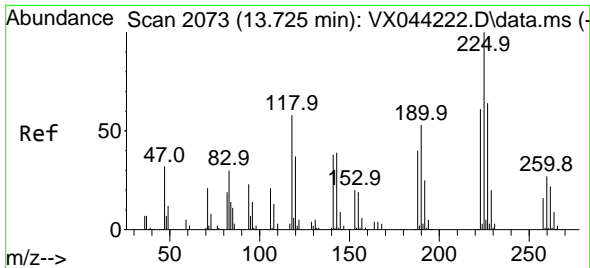


#93
 1,2,4-Trichlorobenzene
 Concen: 0.838 ug/l
 RT: 13.591 min Scan# 2051
 Delta R.T. 0.006 min
 Lab File: VX044463.D
 Acq: 20 Dec 2024 19:26



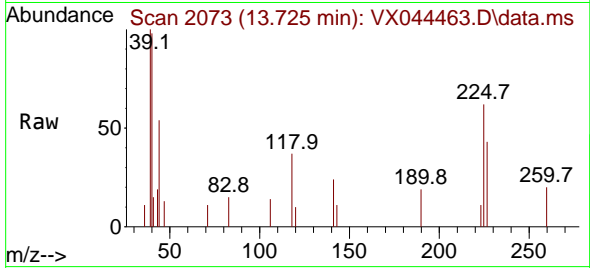
Tgt Ion:180 Resp: 1201
 Ion Ratio Lower Upper
 180 100
 182 109.2 48.0 144.2
 145 41.7 16.6 49.7





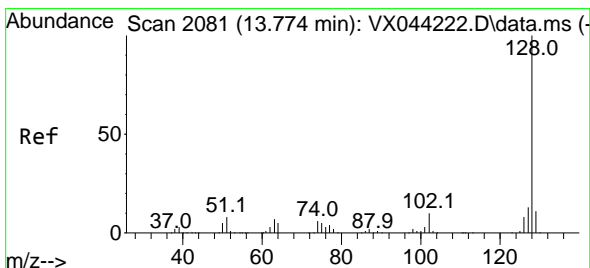
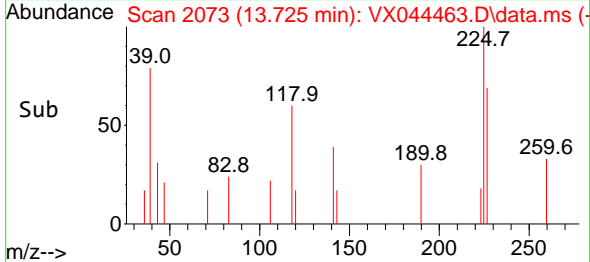
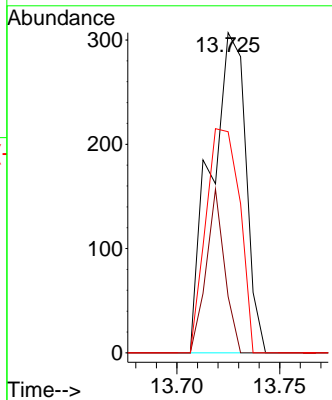
#94
 Hexachlorobutadiene
 Concen: 0.631 ug/l
 RT: 13.725 min Scan# 2073
 Delta R.T. -0.000 min
 Lab File: VX044463.D
 Acq: 20 Dec 2024 19:26

Instrument : MSVOA_X
 ClientSampleId :



Tgt Ion: 225 Resp: 364

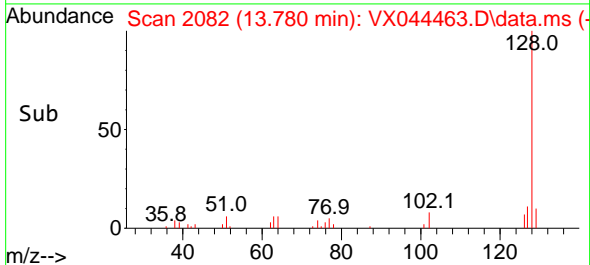
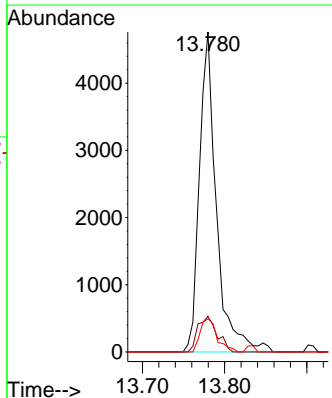
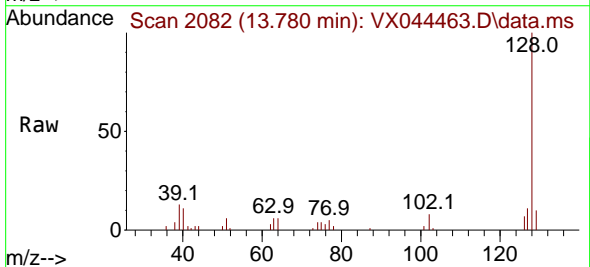
Ion	Ratio	Lower	Upper
225	100		
223	26.9	30.8	92.4
227	67.6	32.1	96.3

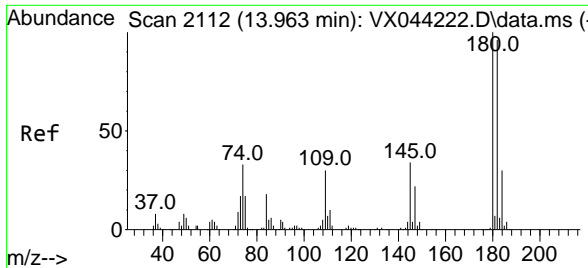


#95
 Naphthalene
 Concen: 1.222 ug/l
 RT: 13.780 min Scan# 2082
 Delta R.T. 0.006 min
 Lab File: VX044463.D
 Acq: 20 Dec 2024 19:26

Tgt Ion: 128 Resp: 6838

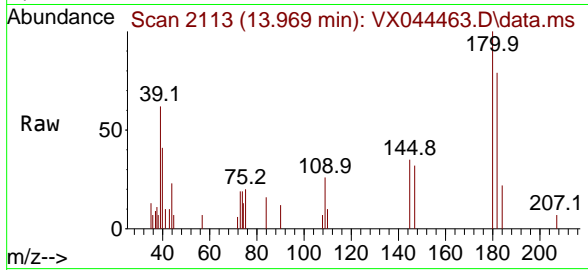
Ion	Ratio	Lower	Upper
128	100		
127	12.6	10.5	15.7
129	10.3	9.0	13.4





#96
 1,2,3-Trichlorobenzene
 Concen: 0.866 ug/l
 RT: 13.969 min Scan# 2113
 Delta R.T. 0.006 min
 Lab File: VX044463.D
 Acq: 20 Dec 2024 19:26

Instrument :
 MSVOA_X
 ClientSampleId :



Tgt Ion:180 Resp: 1317

Ion	Ratio	Lower	Upper
180	100		
182	98.4	48.0	144.0
145	36.1	17.7	53.1

