

Data Path : Z:\VOASRV\HPCHEM1\MSVOA X\DATA\WX122118\
 Data File : VX006754.D
 Acq On : 22 Dec 2018 05:45
 Operator : JC/MD
 Sample : J6500-01
 Misc : 5.0mL/MSVOA X/WATER
 ALS Vial : 45 Sample Multiplier: 1

Instrument :
 MSVOA_X
 ClientSampleId :
 GROUNDWATER

Quant Time: Dec 22 09:40:40 2018
 Quant Method : Z:\VOASRV\HPCHEM1\MSVOA_X\METHOD\82X121818W.M
 Quant Title : SW846 8260
 QLast Update : Wed Dec 19 15:20:58 2018
 Response via : Initial Calibration

Internal Standards	R.T.	QIon	Response	Conc	Units	Dev(Min)
1) Pentafluorobenzene	5.67	168	667526	50.00	ug/l	0.00
34) 1,4-Difluorobenzene	6.86	114	1034187	50.00	ug/l	0.00
63) Chlorobenzene-d5	10.12	117	928533	50.00	ug/l	0.00
72) 1,4-Dichlorobenzene-d4	12.08	152	437955	50.00	ug/l	0.00

System Monitoring Compounds

33) 1,2-Dichloroethane-d4	6.07	65	347922	48.36	ug/l	0.00
Spiked Amount	50.000		Recovery	=	96.72%	
35) Dibromofluoromethane	5.51	113	311112	47.57	ug/l	0.00
Spiked Amount	50.000		Recovery	=	95.14%	
50) Toluene-d8	8.71	98	1205730	48.90	ug/l	0.00
Spiked Amount	50.000		Recovery	=	97.80%	
62) 4-Bromofluorobenzene	11.14	95	425534	47.12	ug/l	0.00
Spiked Amount	50.000		Recovery	=	94.24%	

Target Compounds

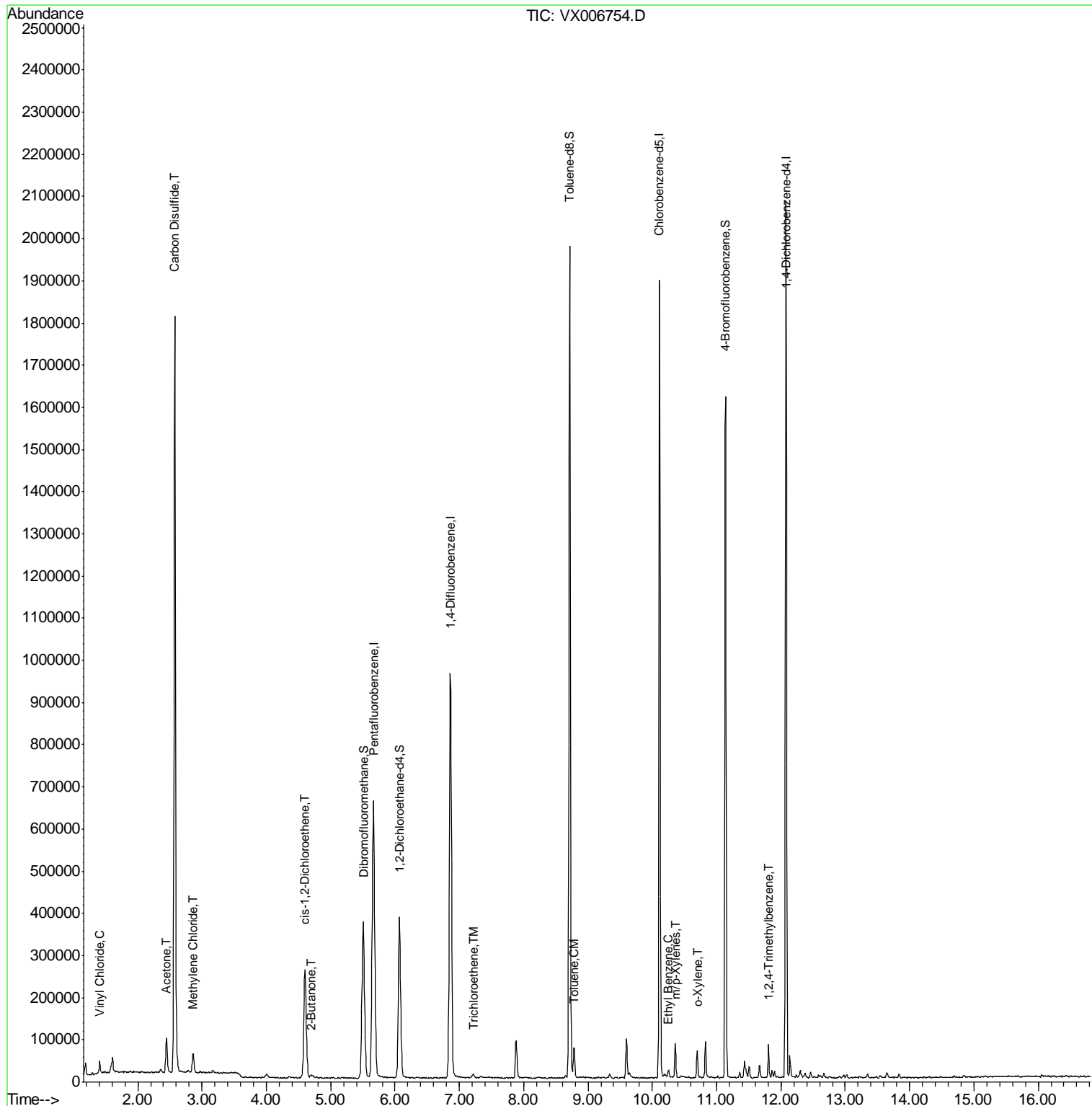
						Qvalue
4) Vinyl Chloride	1.41	62	9961	1.450	ug/l	92
16) Acetone	2.45	43	90859	27.489	ug/l	99
17) Carbon Disulfide	2.57	76	2134079	135.211	ug/l	99
20) Methylene Chloride	2.86	84	22356	3.271	ug/l	88
25) 2-Butanone	4.70	43	10237	2.202	ug/l	93
27) cis-1,2-Dichloroethene	4.60	96	176098	24.153	ug/l	92
44) Trichloroethene	7.21	130	4175	0.530	ug/l	76
52) Toluene	8.78	92	26306	1.564	ug/l	97
67) Ethyl Benzene	10.25	91	11129	0.347	ug/l	100
68) m/p-Xylenes	10.36	106	20072	1.585	ug/l	96
69) o-Xylene	10.70	106	15941	1.274	ug/l	100
84) 1,2,4-Trimethylbenzene	11.80	105	34254	1.320	ug/l	98

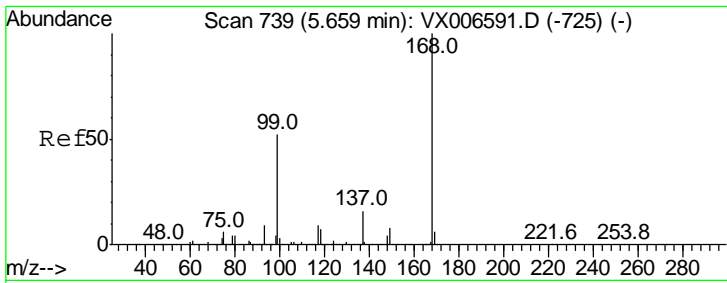
(#) = qualifier out of range (m) = manual integration (+) = signals summed

Data Path : Z:\VOASRV\HPCHEM1\MSVOA X\DATA\VX122118\
 Data File : VX006754.D
 Acq On : 22 Dec 2018 05:45
 Operator : JC/MD
 Sample : J6500-01
 Misc : 5.0mL/MSVOA X/WATER
 ALS Vial : 45 Sample Multiplier: 1

Instrument :
 MSVOA_X
 Client Sampled :
 GROUNDWATER

Quant Time: Dec 22 09:40:40 2018
 Quant Method : Z:\VOASRV\HPCHEM1\MSVOA_X\METHOD\82X121818W.M
 Quant Title : SW846 8260
 QLast Update : Wed Dec 19 15:20:58 2018
 Response via : Initial Calibration

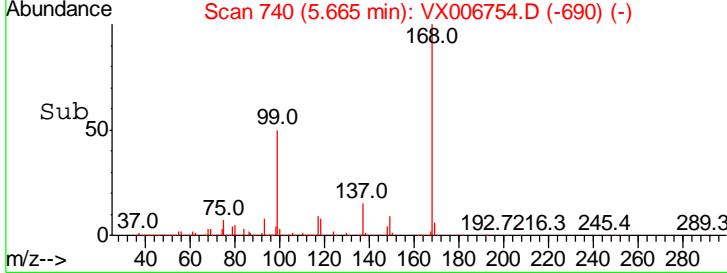
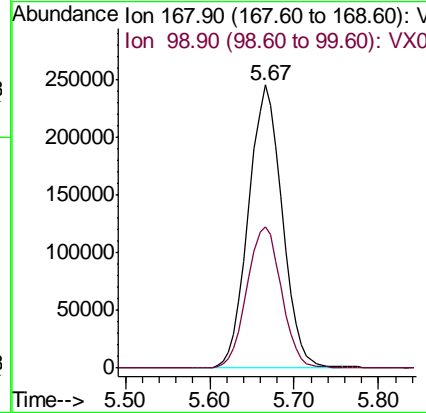
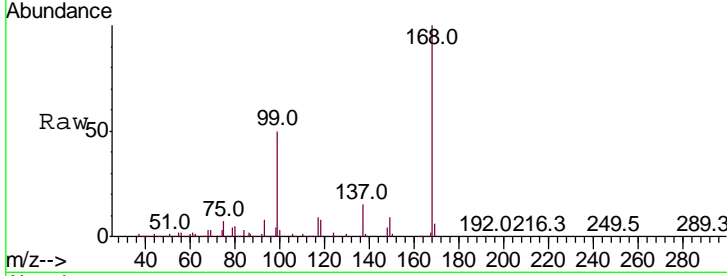




#1
 Pentafluorobenzene
 Concen: 50.000 ug/l
 RT: 5.67 min Scan# 740
 Delta R.T. 0.01 min
 Lab File: VX006754.D
 Acq: 22 Dec 2018 05:45

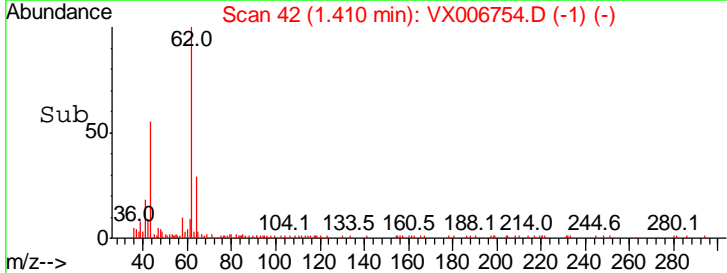
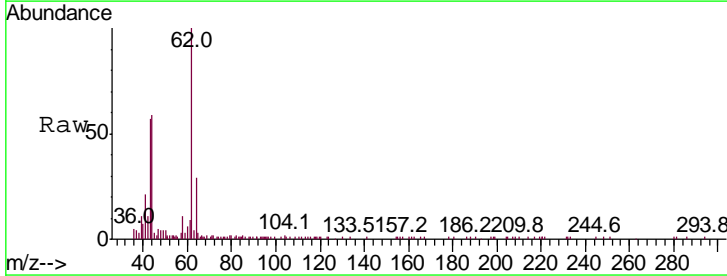
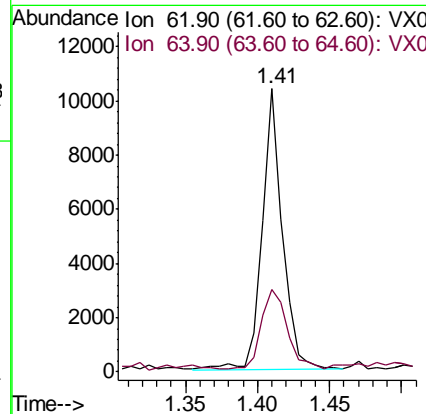
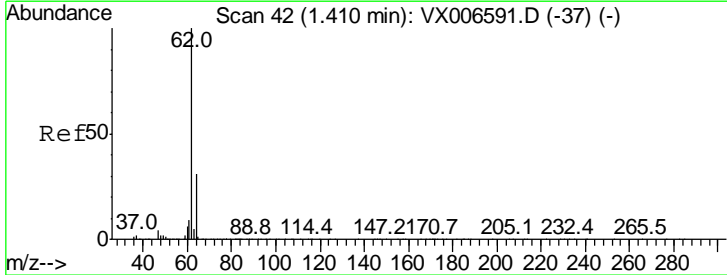
Instrument :
 MSVOA_X
ClientSampled :
 GROUNDWATER

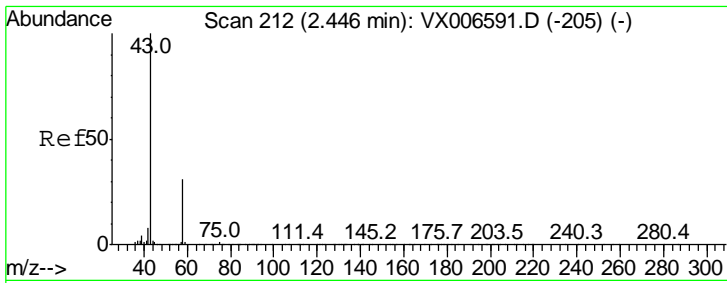
Tgt Ion	Resp	Lower	Upper
168	100		
99	50.1	41.8	62.8



#4
 Vinyl Chloride
 Concen: 1.450 ug/l
 RT: 1.41 min Scan# 42
 Delta R.T. -0.00 min
 Lab File: VX006754.D
 Acq: 22 Dec 2018 05:45

Tgt Ion	Resp	Lower	Upper
62	100		
64	27.0	25.1	37.7

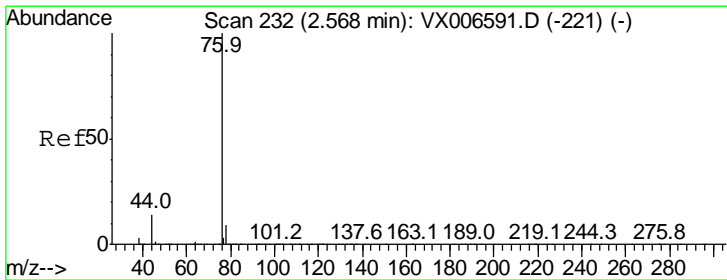
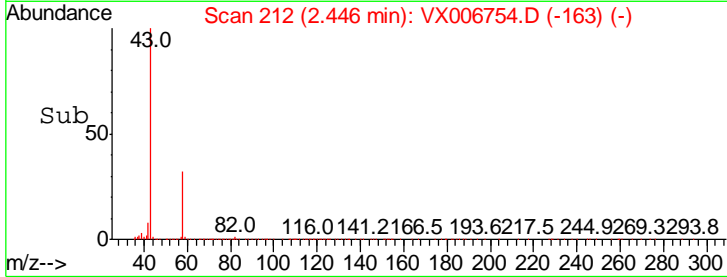
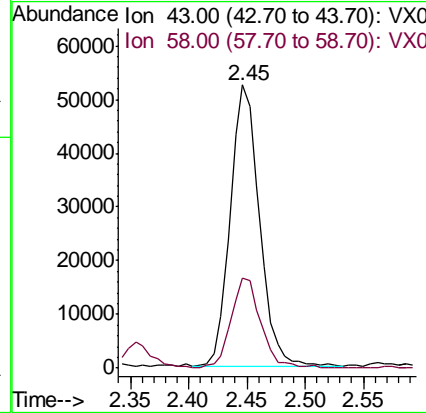
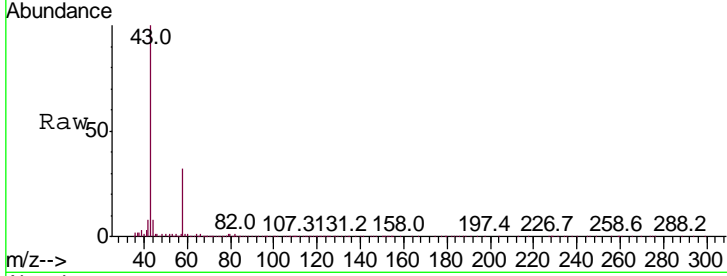




#16
 Acetone
 Concen: 27.489 ug/l
 RT: 2.45 min Scan# 212
 Delta R.T. -0.00 min
 Lab File: VX006754.D
 Acq: 22 Dec 2018 05:45

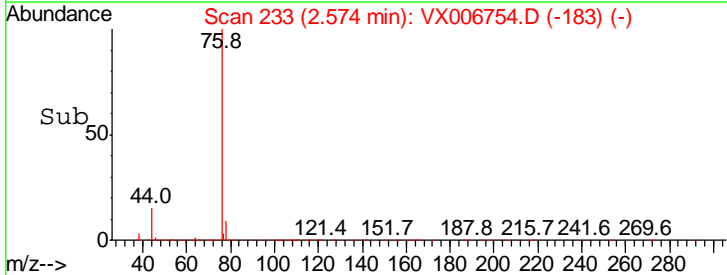
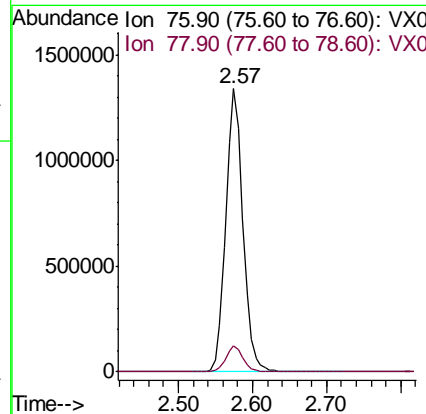
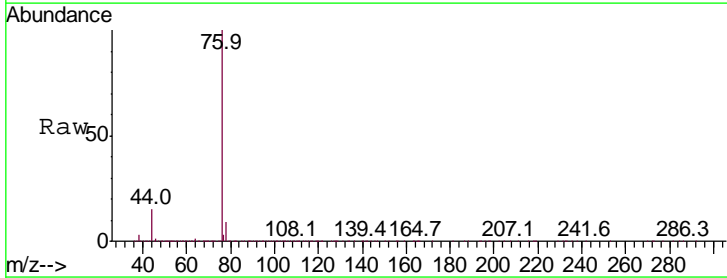
Instrument :
 MSVOA_X
 ClientSampleId :
 GROUNDWATER

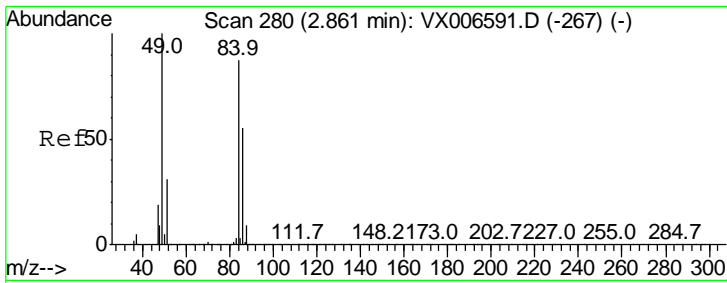
Tot Ion: 43 Resp: 90859
 Ion Ratio Lower Upper
 43 100
 58 31.7 25.0 37.6



#17
 Carbon Disulfide
 Concen: 135.211 ug/l
 RT: 2.57 min Scan# 233
 Delta R.T. 0.01 min
 Lab File: VX006754.D
 Acq: 22 Dec 2018 05:45

Tgt Ion: 76 Resp: 2134079
 Ion Ratio Lower Upper
 76 100
 78 9.2 7.0 10.6

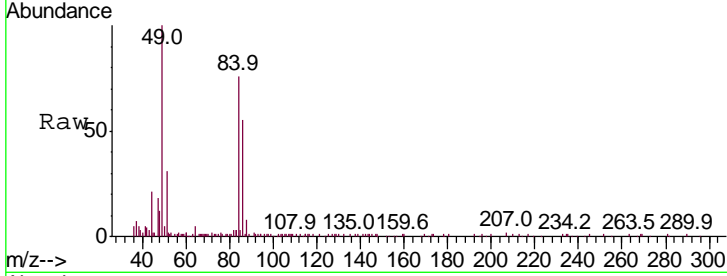




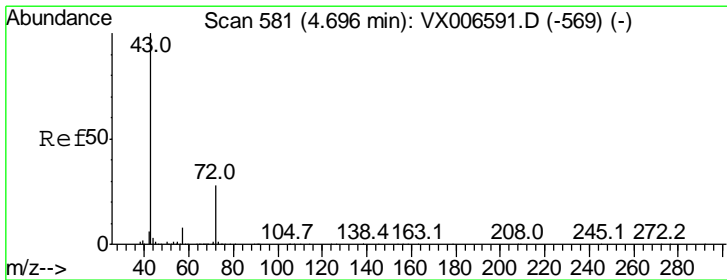
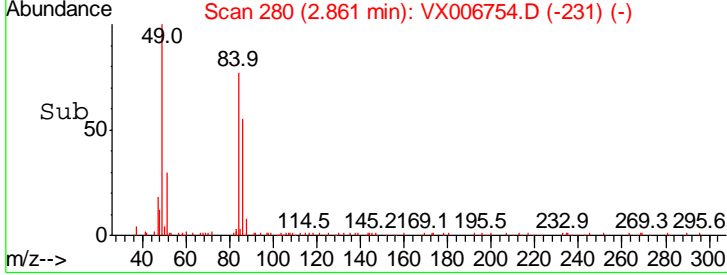
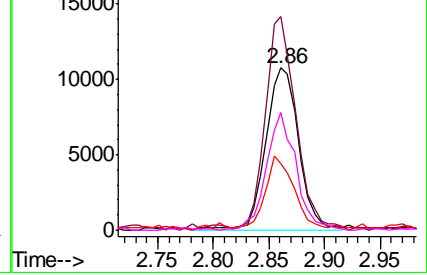
#20
 Methylene Chloride
 Concen: 3.271 ug/l
 RT: 2.86 min Scan# 280
 Delta R.T. -0.00 min
 Lab File: VX006754.D
 Acq: 22 Dec 2018 05:45

Instrument :
 MSVOA_X
 ClientSampled :
 GROUNDWATER

Tgt Ion	Resp	Lower	Upper
84	100		
49	127.8	91.8	137.6
51	40.8	28.5	42.7
86	72.0	50.2	75.2

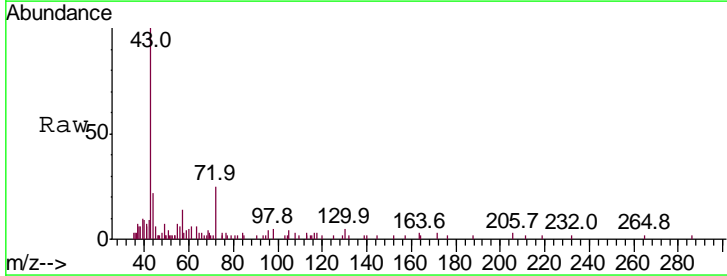


Abundance Ion 83.90 (83.60 to 84.60): VX0
 Ion 48.90 (48.60 to 49.60): VX0
 Ion 50.90 (50.60 to 51.60): VX0
 Ion 85.90 (85.60 to 86.60): VX0

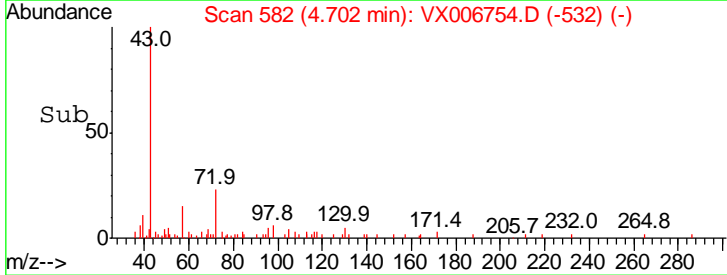
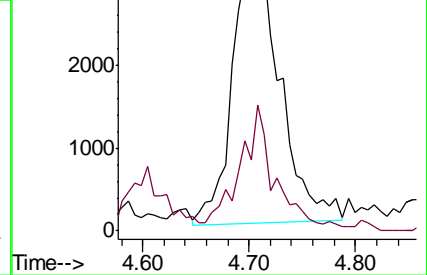


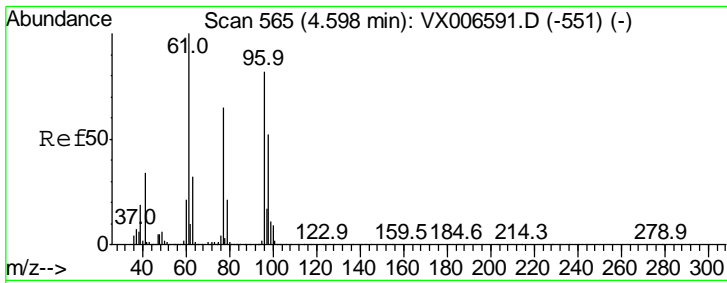
#25
 2-Butanone
 Concen: 2.202 ug/l
 RT: 4.70 min Scan# 582
 Delta R.T. 0.01 min
 Lab File: VX006754.D
 Acq: 22 Dec 2018 05:45

Tgt Ion	Resp	Lower	Upper
43	100		
72	24.3	22.4	33.6



Abundance Ion 43.00 (42.70 to 43.70): VX0
 Ion 72.00 (71.70 to 72.70): VX0

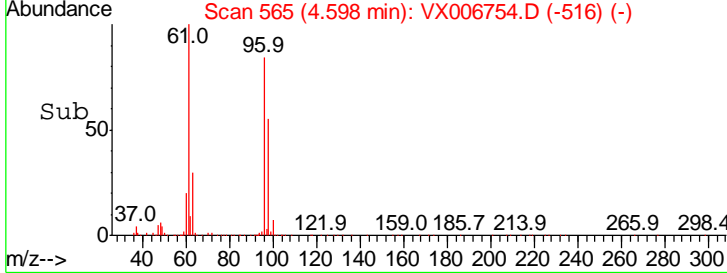
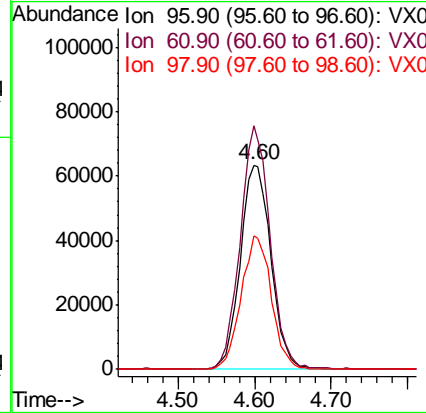
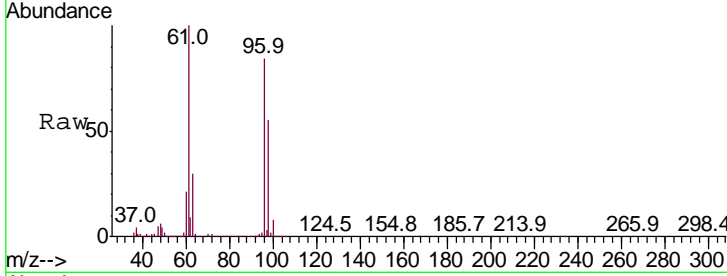




#27
 cis-1,2-Dichloroethene
 Concen: 24.153 ug/l
 RT: 4.60 min Scan# 565
 Delta R.T. -0.00 min
 Lab File: VX006754.D
 Acq: 22 Dec 2018 05:45

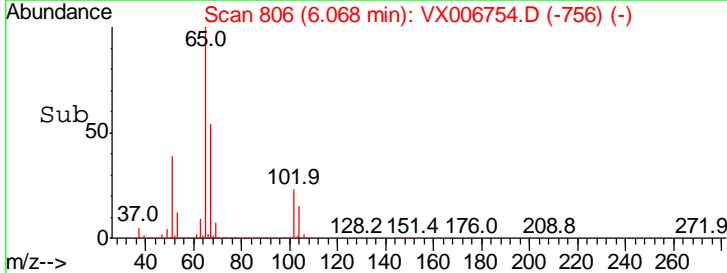
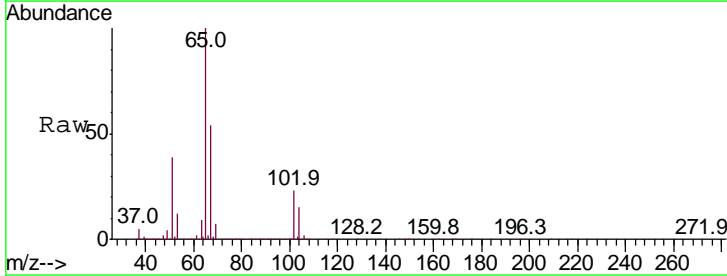
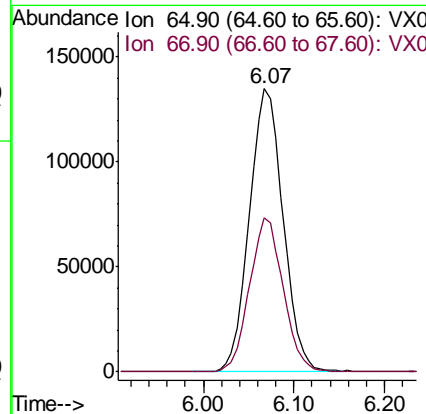
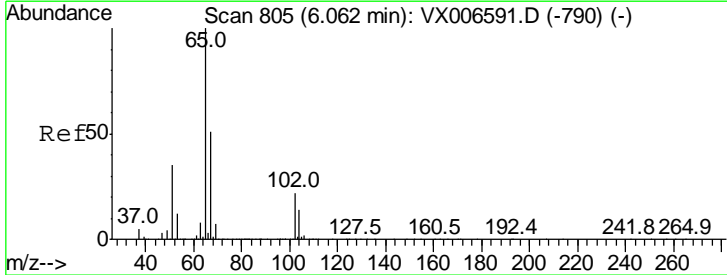
Instrument :
 MSVOA_X
ClientSampled :
 GROUNDWATER

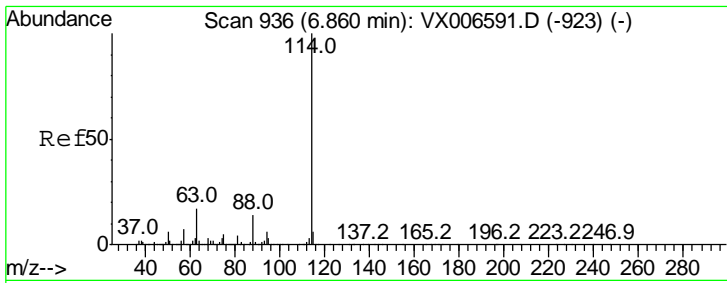
Tgt Ion	Resp	Lower	Upper
96	176098		
Ion Ratio			
96	100		
61	116.3	0.0	258.6
98	63.9	0.0	132.0



#33
 1,2-Dichloroethane-d4
 Concen: 48.361 ug/l
 RT: 6.07 min Scan# 806
 Delta R.T. 0.01 min
 Lab File: VX006754.D
 Acq: 22 Dec 2018 05:45

Tgt Ion	Resp	Lower	Upper
65	347922		
Ion Ratio			
65	100		
67	54.4	0.0	105.0

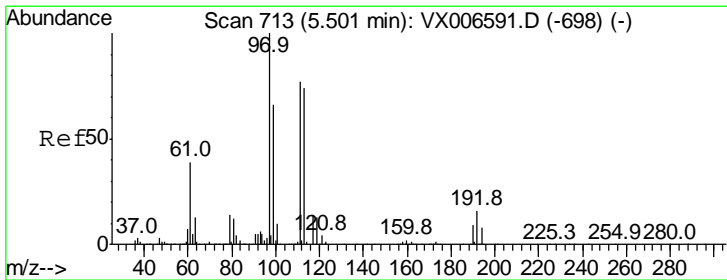
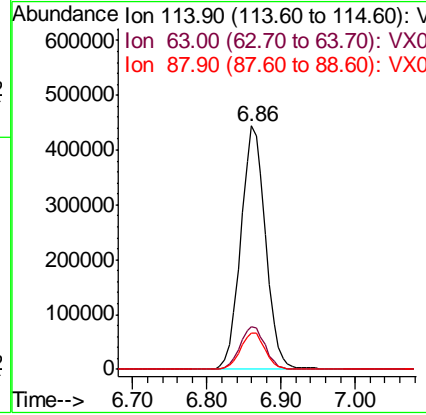
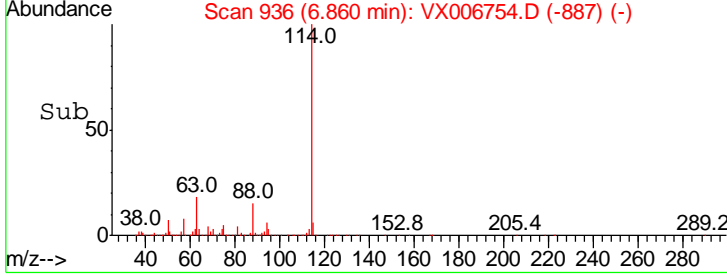
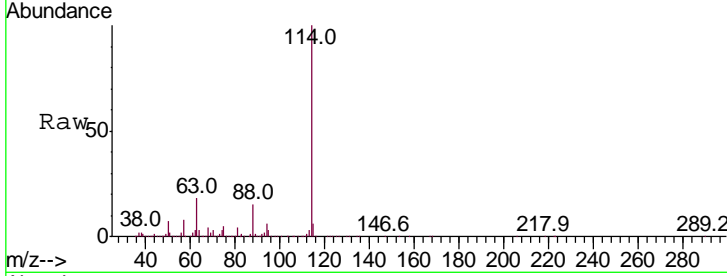




#34
 1,4-Difluorobenzene
 Concen: 50.000 ug/l
 RT: 6.86 min Scan# 936
 Delta R.T. -0.00 min
 Lab File: VX006754.D
 Acq: 22 Dec 2018 05:45

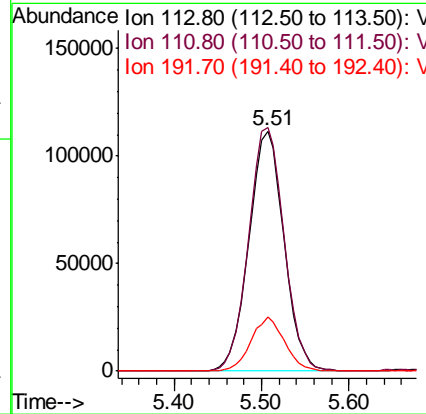
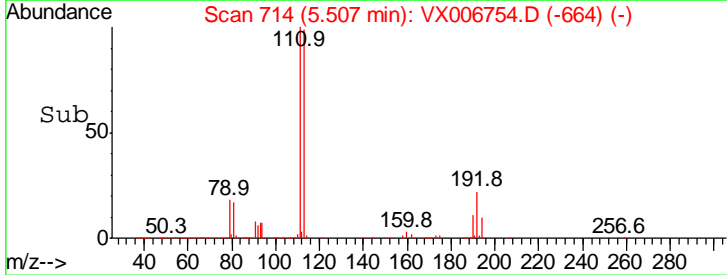
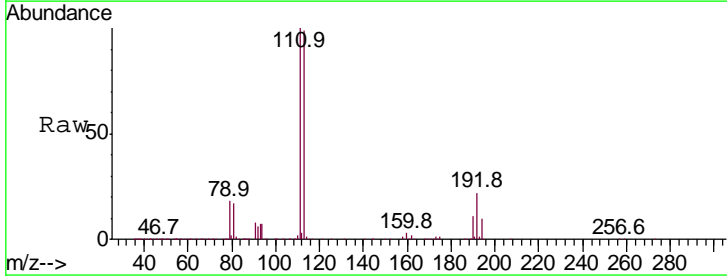
Instrument : MSVOA_X
 ClientSampled : GROUNDWATER

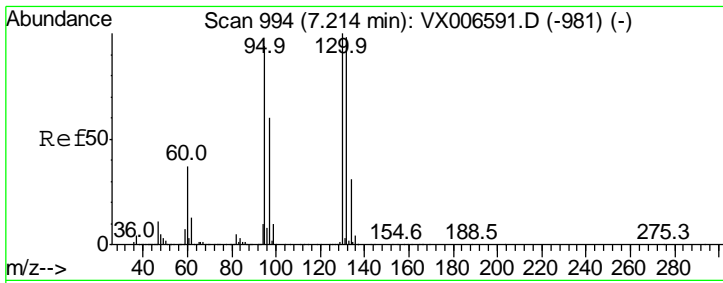
Tgt Ion	Resp	Lower	Upper
114	1034187		
63	17.6	0.0	34.8
88	15.0	0.0	28.8



#35
 Dibromofluoromethane
 Concen: 47.571 ug/l
 RT: 5.51 min Scan# 714
 Delta R.T. 0.01 min
 Lab File: VX006754.D
 Acq: 22 Dec 2018 05:45

Tgt Ion	Resp	Lower	Upper
113	311112		
111	102.8	81.6	122.4
192	21.6	16.7	25.1

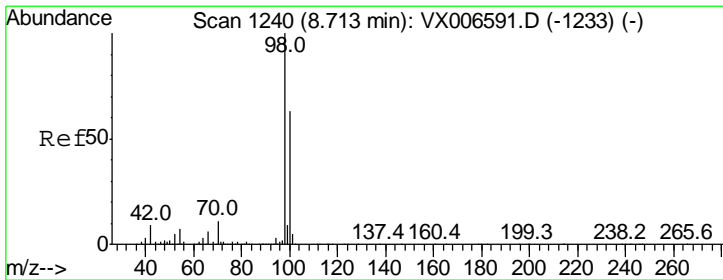
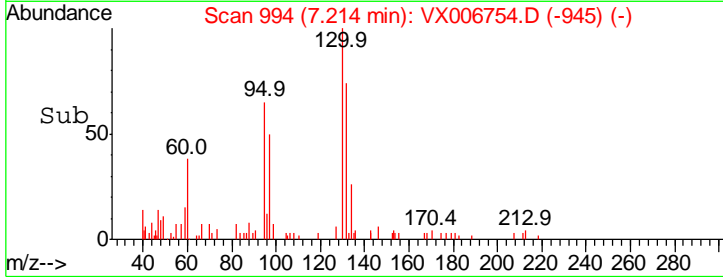
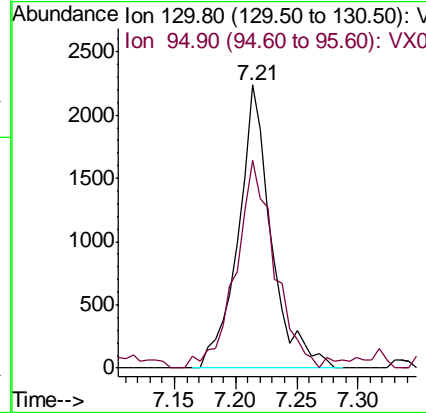
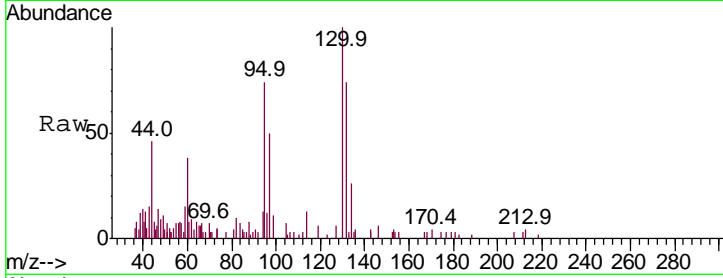




#44
 Trichloroethene
 Concen: 0.530 ug/l
 RT: 7.21 min Scan# 994
 Delta R.T. -0.00 min
 Lab File: VX006754.D
 Acq: 22 Dec 2018 05:45

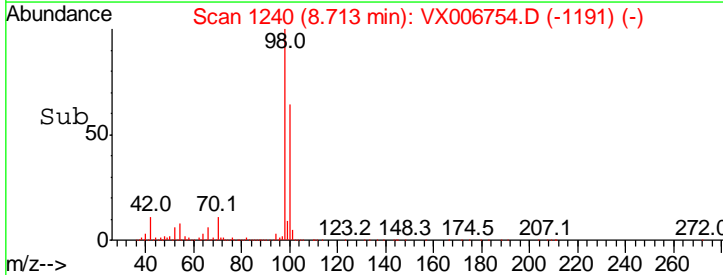
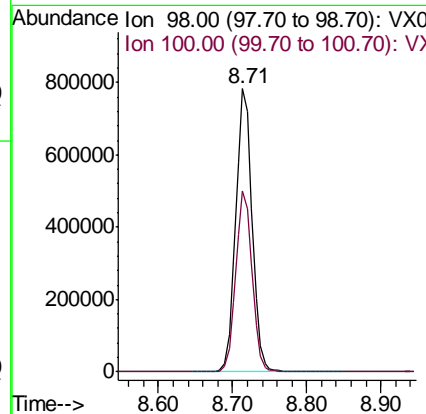
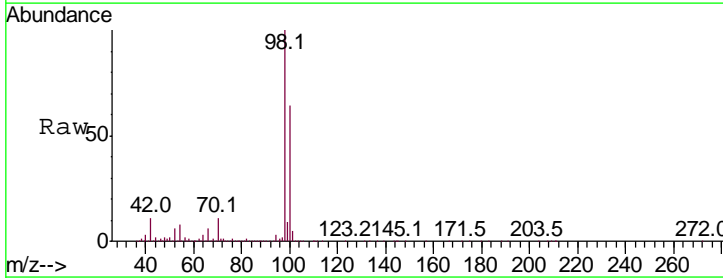
Instrument : MSVOA_X
 ClientSampled : GROUNDWATER

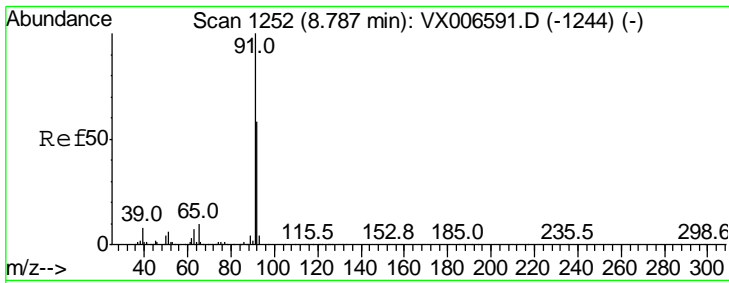
Tgt Ion	Ratio	Lower	Upper
130	100		
95	70.6	0.0	187.0



#50
 Toluene-d8
 Concen: 48.902 ug/l
 RT: 8.71 min Scan# 1240
 Delta R.T. -0.00 min
 Lab File: VX006754.D
 Acq: 22 Dec 2018 05:45

Tgt Ion	Ratio	Lower	Upper
98	100		
100	64.1	52.0	78.0

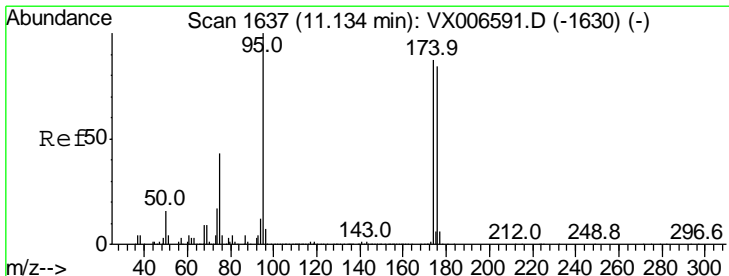
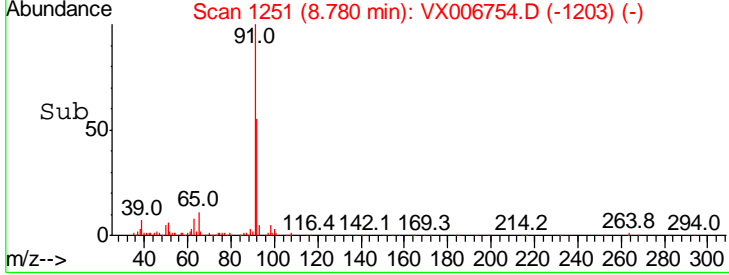
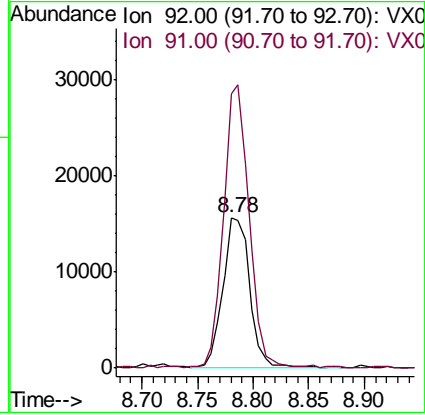
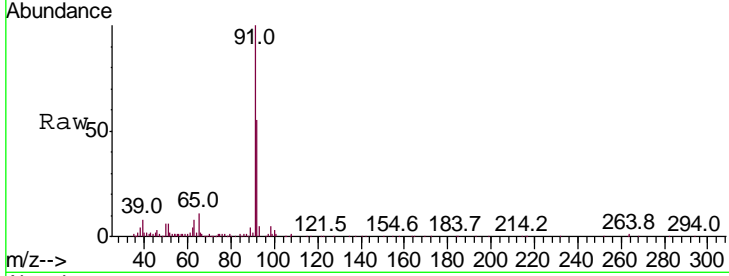




#52
 Toluene
 Concen: 1.564 ug/l
 RT: 8.78 min Scan# 1251
 Delta R.T. -0.01 min
 Lab File: VX006754.D
 Acq: 22 Dec 2018 05:45

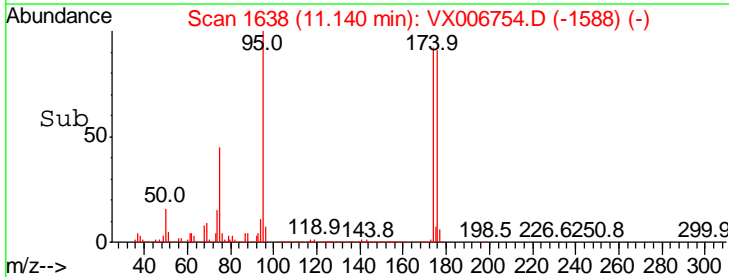
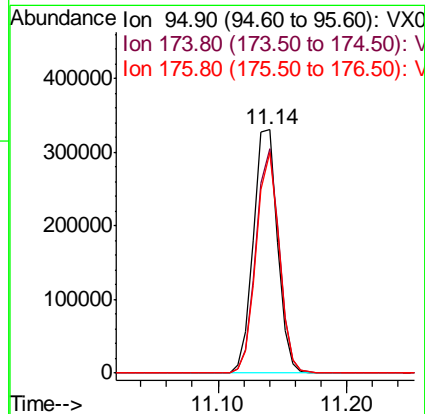
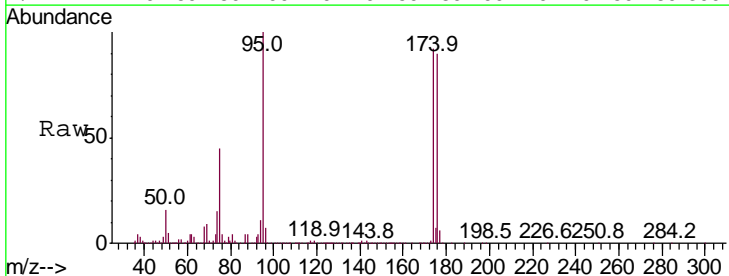
Instrument :
 MSVOA_X
 ClientSampled :
 GROUNDWATER

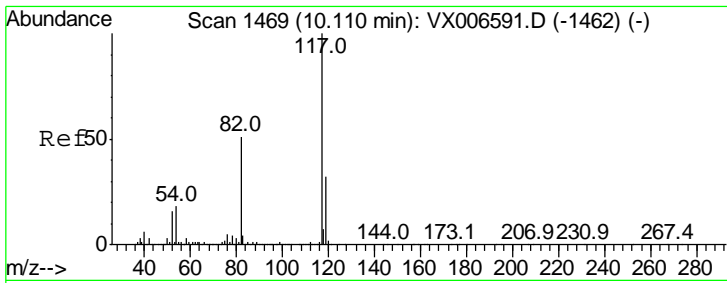
Tgt Ion	Resp	Lower	Upper
92	26306		
92	100		
91	176.4	137.6	206.4



#62
 4-Bromofluorobenzene
 Concen: 47.124 ug/l
 RT: 11.14 min Scan# 1638
 Delta R.T. 0.01 min
 Lab File: VX006754.D
 Acq: 22 Dec 2018 05:45

Tgt Ion	Resp	Lower	Upper
95	425534		
95	100		
174	88.6	0.0	182.2
176	86.3	0.0	178.8

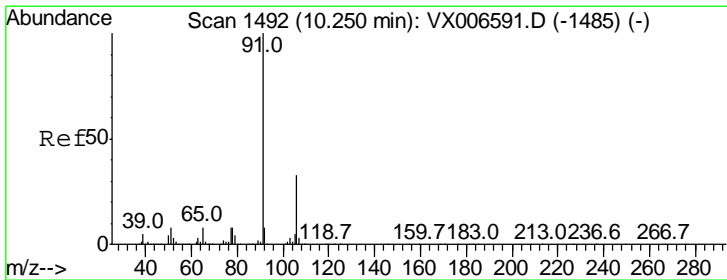
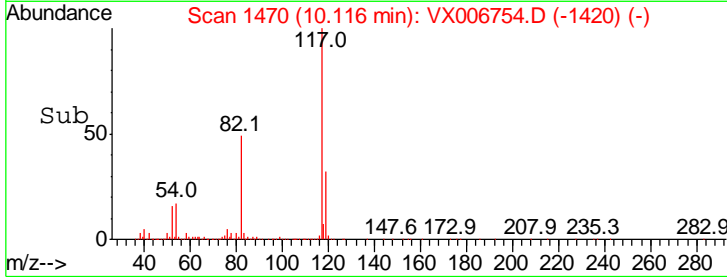
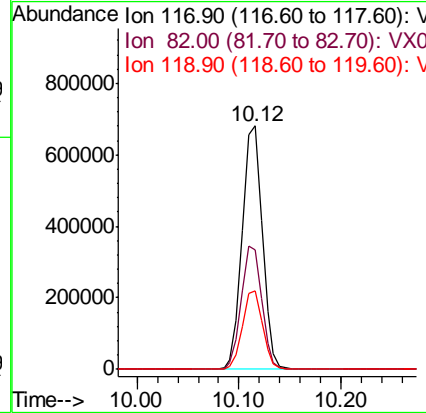
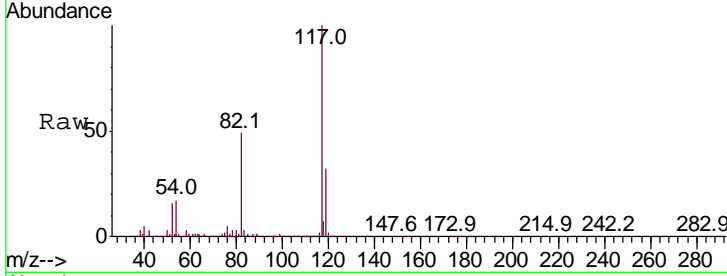




#63
 Chlorobenzene-d5
 Concen: 50.000 ug/l
 RT: 10.12 min Scan# 1470
 Delta R.T. 0.01 min
 Lab File: VX006754.D
 Acq: 22 Dec 2018 05:45

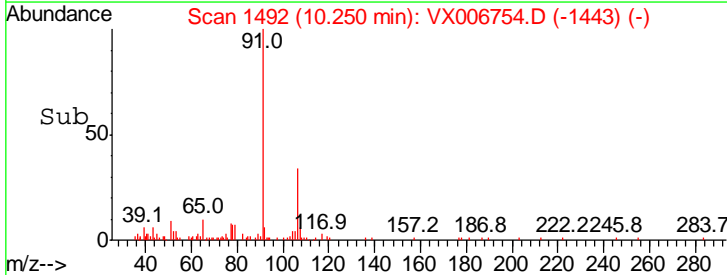
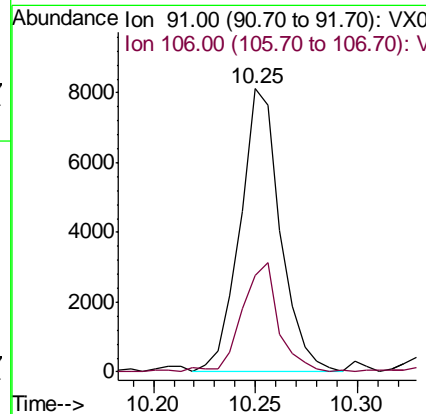
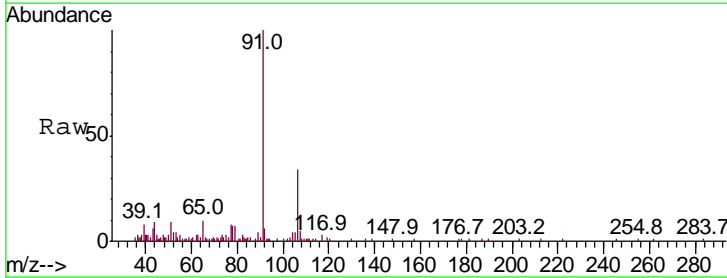
Instrument : MSVOA_X
 ClientSampled : GROUNDWATER

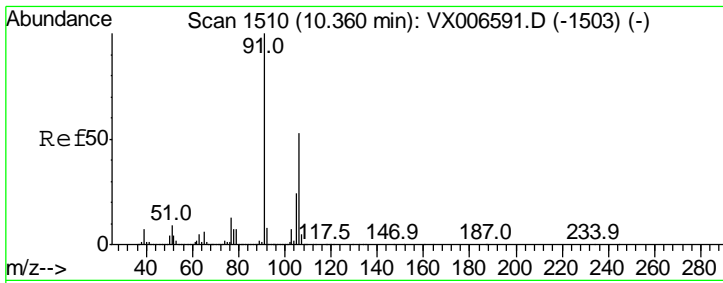
Tgt Ion	Resp	Lower	Upper
117	100		
82	49.2	41.0	61.6
119	32.0	25.4	38.0



#67
 Ethyl Benzene
 Concen: 0.347 ug/l
 RT: 10.25 min Scan# 1492
 Delta R.T. -0.00 min
 Lab File: VX006754.D
 Acq: 22 Dec 2018 05:45

Tgt Ion	Resp	Lower	Upper
91	100		
106	33.2	26.4	39.6

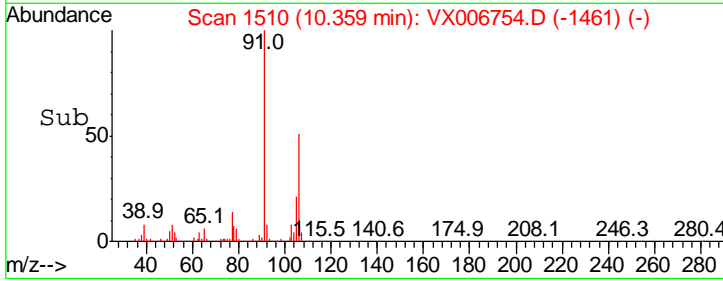
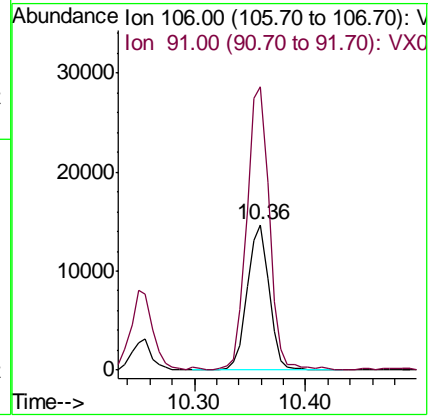
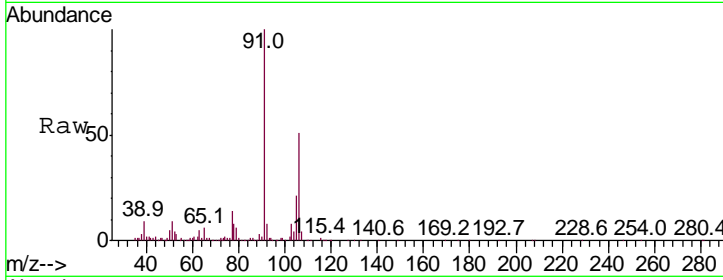




#68
 m/p-Xylenes
 Concen: 1.585 ug/l
 RT: 10.36 min Scan# 1510
 Delta R.T. -0.00 min
 Lab File: VX006754.D
 Acq: 22 Dec 2018 05:45

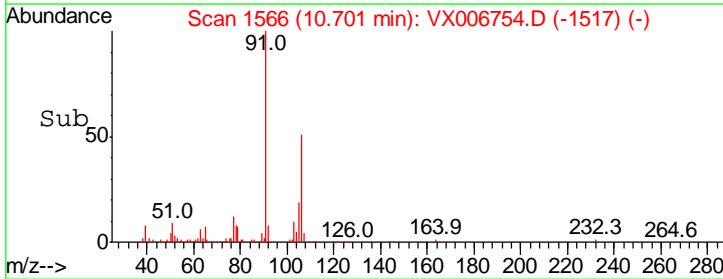
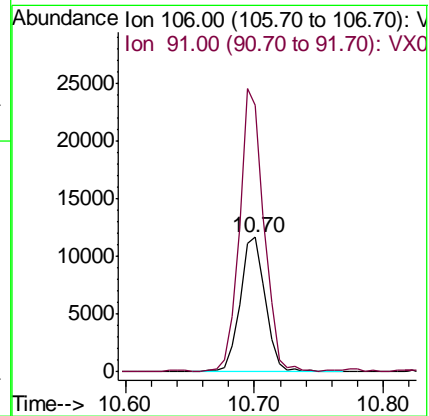
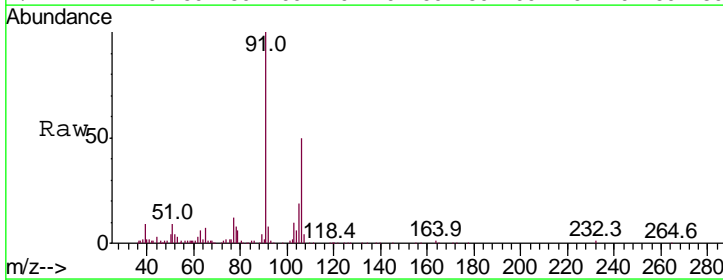
Instrument : MSVOA_X
 ClientSampled : GROUNDWATER

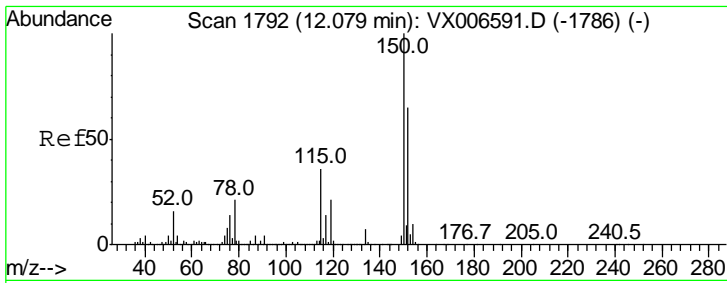
Tgt Ion	Resp	Lower	Upper
106	100		
91	201.1	155.8	233.6



#69
 o-Xylene
 Concen: 1.274 ug/l
 RT: 10.70 min Scan# 1566
 Delta R.T. -0.00 min
 Lab File: VX006754.D
 Acq: 22 Dec 2018 05:45

Tgt Ion	Resp	Lower	Upper
106	100		
91	202.8	101.3	303.7

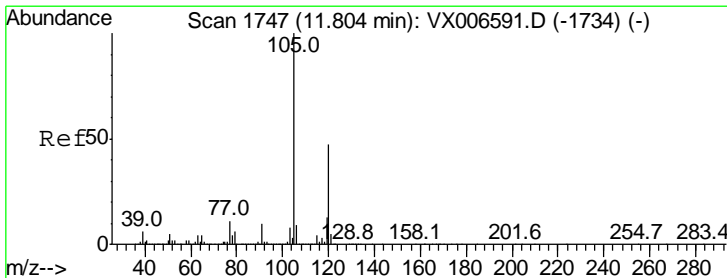
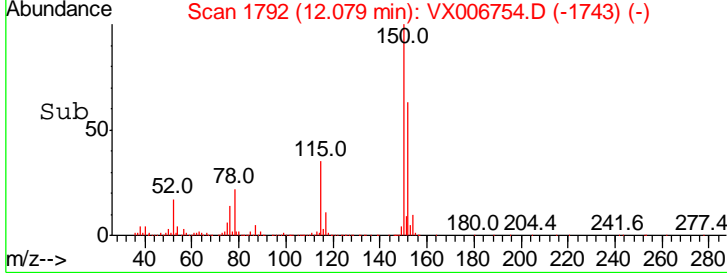
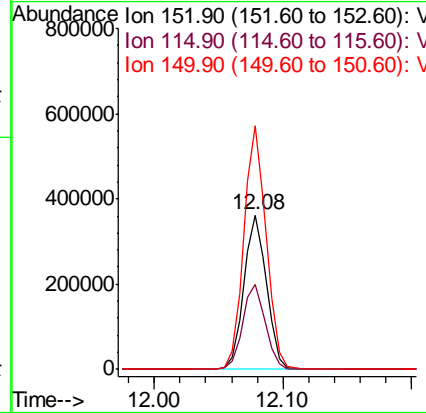
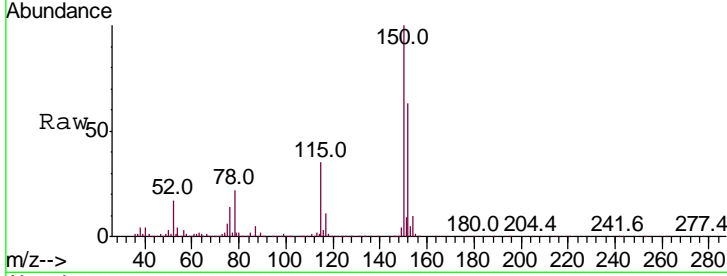




#72
 1,4-Dichlorobenzene-d4
 Concen: 50.000 ug/l
 RT: 12.08 min Scan# 1792
 Delta R.T. -0.00 min
 Lab File: VX006754.D
 Acq: 22 Dec 2018 05:45

Instrument : MSVOA_X
 ClientSampled : GROUNDWATER

Tgt Ion	Resp	Lower	Upper
152	100		
115	55.6	39.1	117.2
150	156.0	0.0	344.8



#84
 1,2,4-Trimethylbenzene
 Concen: 1.320 ug/l
 RT: 11.80 min Scan# 1747
 Delta R.T. -0.00 min
 Lab File: VX006754.D
 Acq: 22 Dec 2018 05:45

Tgt Ion	Resp	Lower	Upper
105	100		
120	47.8	23.2	69.6

