

Data Path : Z:\voasrv\HPCHEM1\MSVOA_X\Data\VX122120\
 Data File : VX020284.D
 Acq On : 22 Dec 2020 05:16
 Operator : JC/MD
 Sample : PB133709ZHE#15
 Misc : 5.0mL/MSVOA_X/WATER
 ALS Vial : 51 Sample Multiplier: 1

Instrument :
 MSVOA_X
 ClientSampleId :
 PB133709ZHE#15

Quant Time: Dec 22 06:57:17 2020
 Quant Method : Z:\VOASRV\HPCHEM1\MSVOA_X\METHCD\82X12182CW.M
 Quant Title : SW846 8260
 QLast Update : Fri Dec 18 13:09:49 2020
 Response via : Initial Calibration

Compound	R.T.	Clon	Response	Conc	Units	Dev(Min)

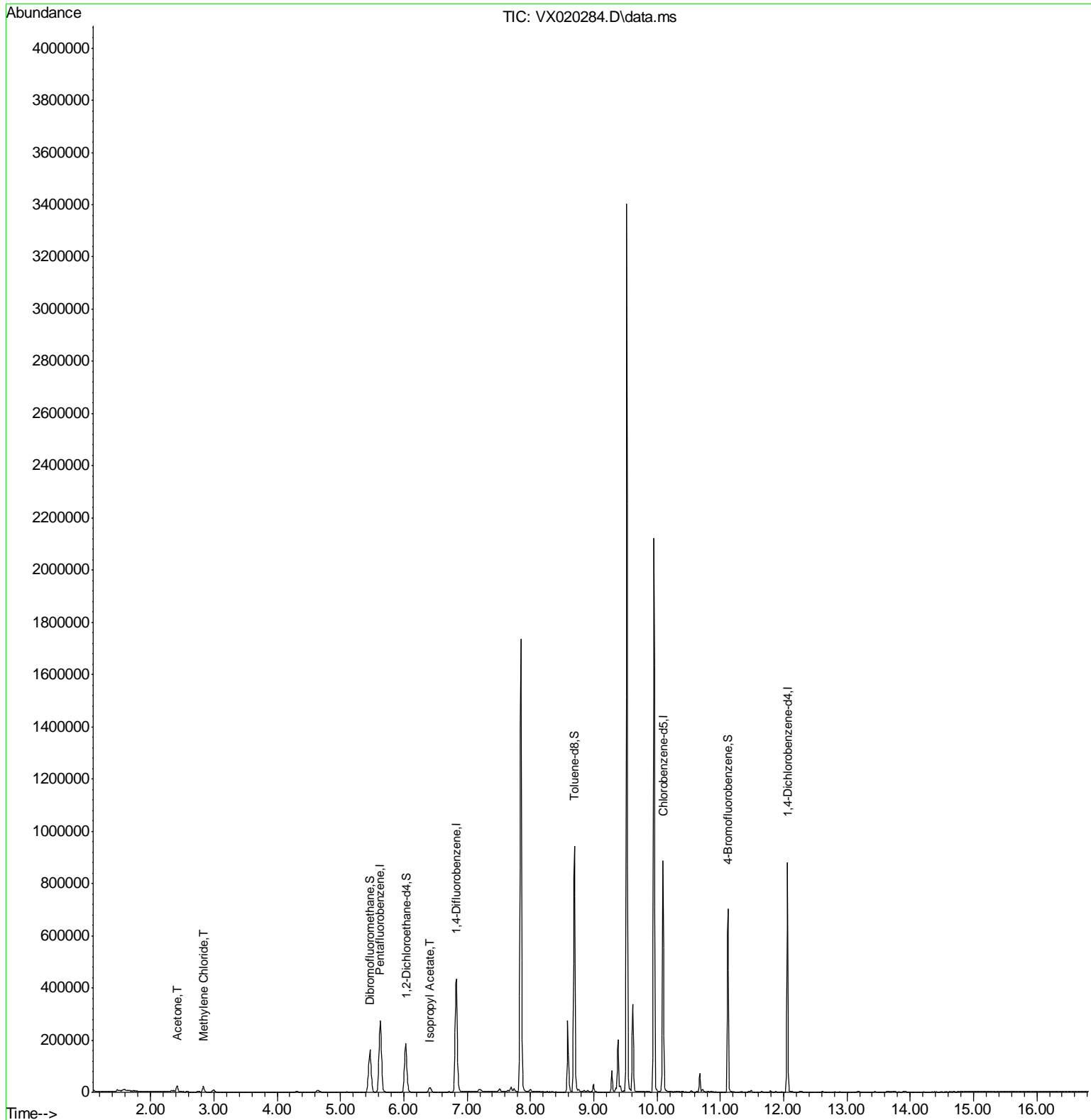
Internal Standards						
1) Pentafluorobenzene	5.629	168	258766	50.00	ug/l	0.01
34) 1,4-Difluorobenzene	6.830	114	437651	50.00	ug/l	0.00
63) Chlorobenzene-d5	10.098	117	420411	50.00	ug/l	0.00
72) 1,4-Dichlorobenzene-d4	12.061	152	175571	50.00	ug/l	0.00
System Monitoring Compounds						
33) 1,2-Dichloroethane-d4	6.031	65	175922	50.72	ug/l	0.00
Spiked Amount	50.000	Range	61 - 141	Recovery	=	101.44%
35) Dibromofluoromethane	5.464	113	140903	50.33	ug/l	0.00
Spiked Amount	50.000	Range	69 - 133	Recovery	=	100.66%
50) Toluene-d8	8.695	98	555989	51.59	ug/l	0.00
Spiked Amount	50.000	Range	65 - 126	Recovery	=	103.18%
62) 4-Bromofluorobenzene	11.122	95	189815	46.02	ug/l	0.00
Spiked Amount	50.000	Range	58 - 135	Recovery	=	92.04%
Target Compounds						
16) Acetone	2.416	43	22008	13.91	ug/l	98
20) Methylene Chloride	2.837	84	11709	3.28	ug/l	94
43) Isopropyl Acetate	6.415	43	23898	3.37	ug/l	98

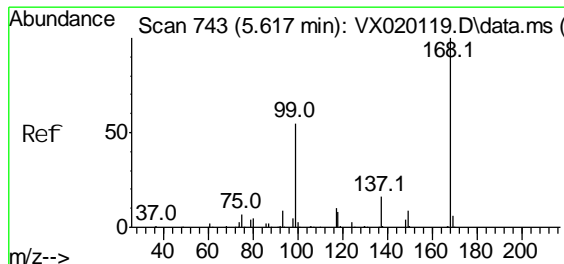
(#) = qualifier out of range (m) = manual integration (+) = signals summed

Data Path : Z:\voasrv\HPCHEM1\MSVOA_X\Data\VX122120\
 Data File : VX020284.D
 Acq On : 22 Dec 2020 05:16
 Operator : JC/MD
 Sample : PB133709ZHE#15
 Mi sc : 5.0mL/MSVOA_X/WATER
 ALS Vial : 51 Sample Multiplier: 1

Instrument :
 MSVOA_X
ClientSampled :
 PB133709ZHE#15

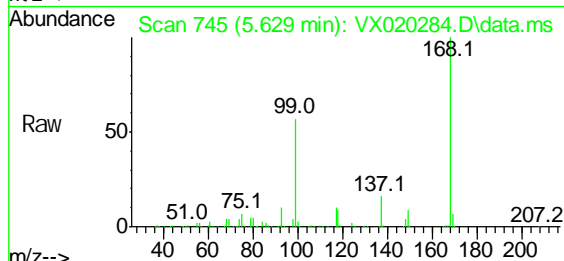
Quant Time: Dec 22 06:57:17 2020
 Quant Method : Z:\VOASRV\HPCHEM1\MSVOA_X\METHCD\82X121820W.M
 Quant Title : SW846 8260
 QLast Update : Fri Dec 18 13:09:49 2020
 Response via : Initial Calibration



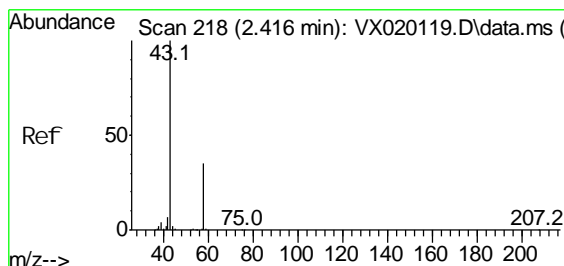
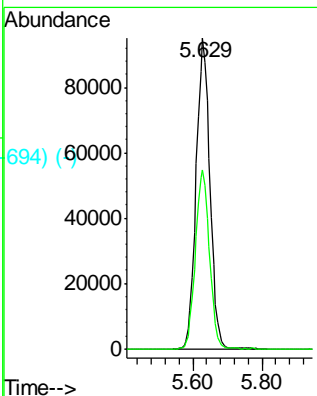
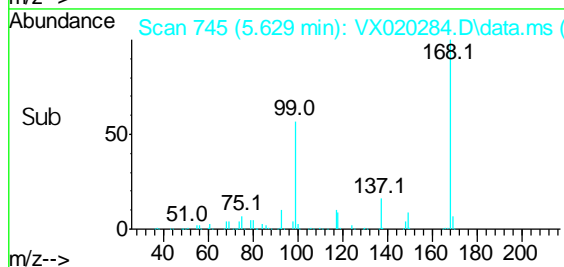


Scan 743 (5.617 min): VX020119.D\data.ms (-743) (-)
 Pentafluorobenzene
 Concen: 50.00 ug/l
 RT: 5.629 min Scan# 745
 Delta R.T. 0.012 min
 Lab File: VX020284.D
 Acq: 22 Dec 2020 05:16

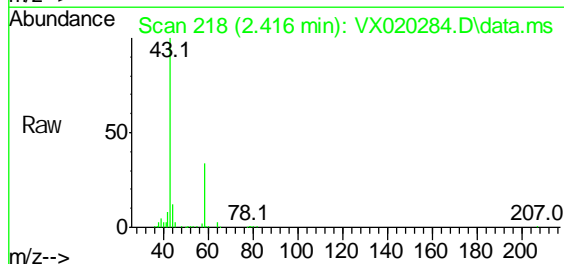
Instrument :
 MSVOA_X
ClientSampled :
 PB133709ZHE#15



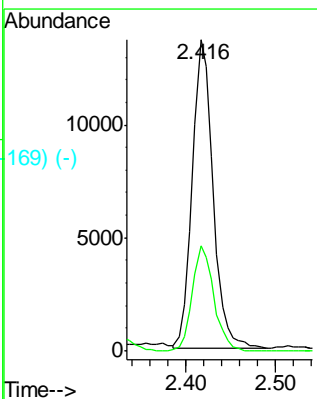
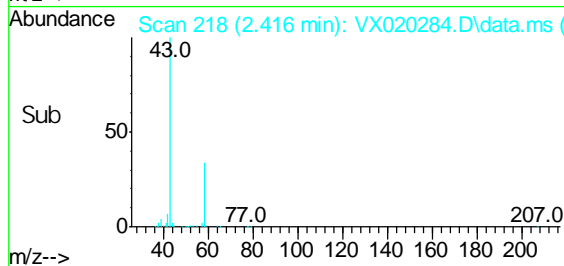
Tgt Ion: 168 Resp: 258766
 Ion Ratio Lower Upper
 168 100
 99 57.5 45.8 68.6

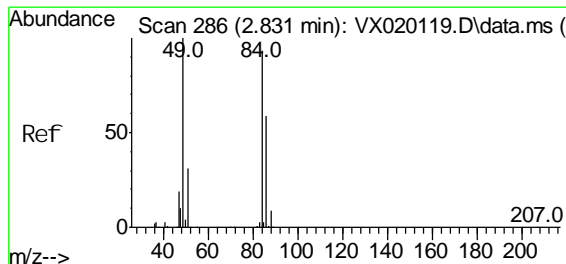


Scan 218 (2.416 min): VX020119.D\data.ms (-218) (-)
 Acetone
 Concen: 13.91 ug/l
 RT: 2.416 min Scan# 218
 Delta R.T. 0.000 min
 Lab File: VX020284.D
 Acq: 22 Dec 2020 05:16



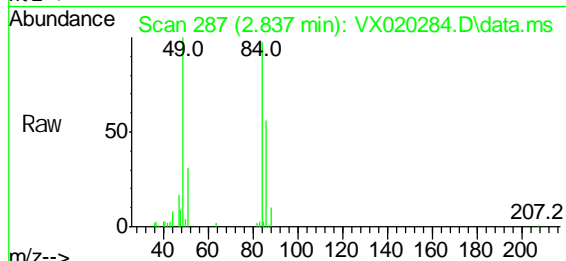
Tgt Ion: 43 Resp: 22008
 Ion Ratio Lower Upper
 43 100
 58 33.8 27.8 41.8





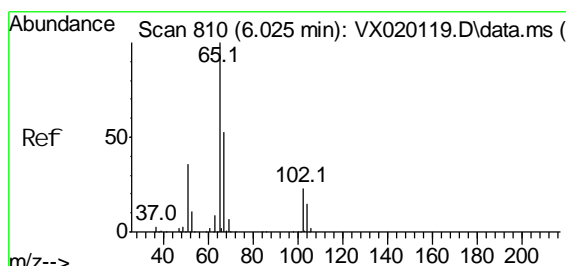
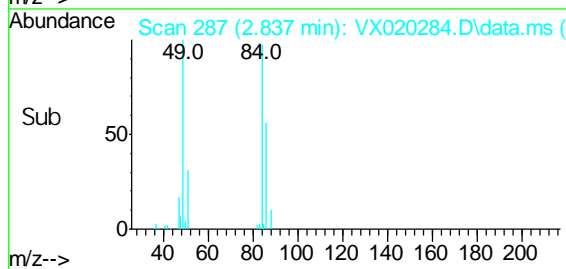
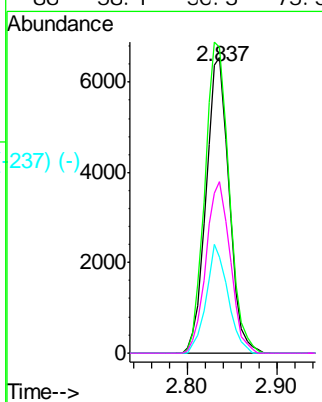
Methylene Chloride
 Concen: 3.28 ug/l
 RT: 2.837 min Scan# 287
 Delta R.T. C.006 min
 Lab File: VX020284.D
 Acq: 22 Dec 2020 05:16

Instrument :
 MSVOA_X
Client Sampled :
 PB133709ZHE#15

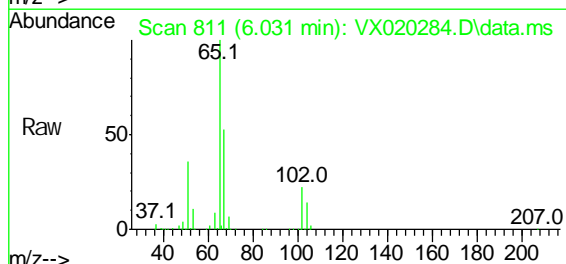


Tgt Ion: 84 Resp: 11709

Ion Ratio	Lower	Upper
84	100	
49	103.4	88.6 132.8
51	32.2	27.0 40.6
86	58.1	50.3 75.5

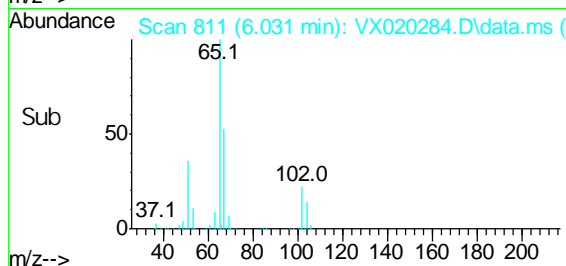
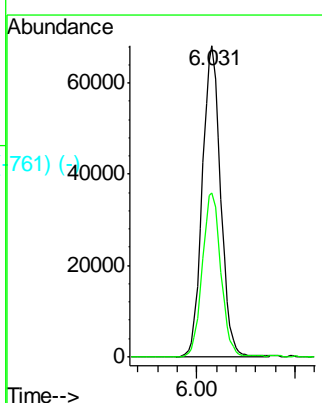


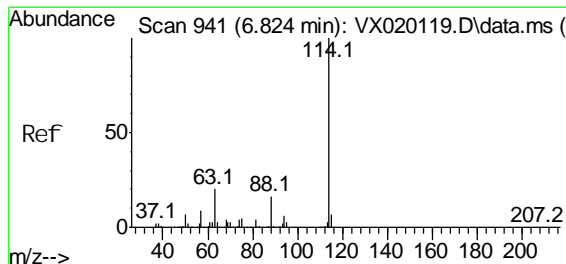
1,2-Dichloroethane-d4
 Concen: 50.72 ug/l
 RT: 6.031 min Scan# 811
 Delta R.T. 0.006 min
 Lab File: VX020284.D
 Acq: 22 Dec 2020 05:16



Tgt Ion: 65 Resp: 175922

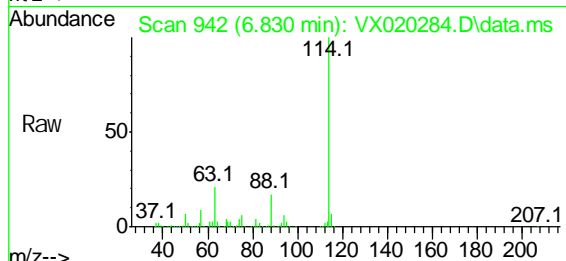
Ion Ratio	Lower	Upper
65	100	
67	53.3	0.0 105.4



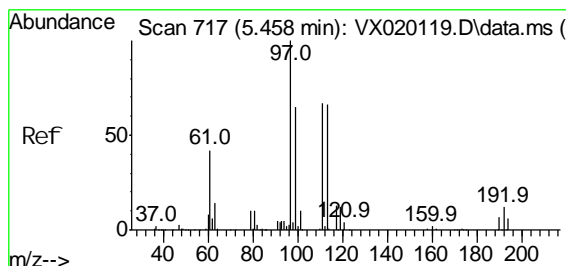
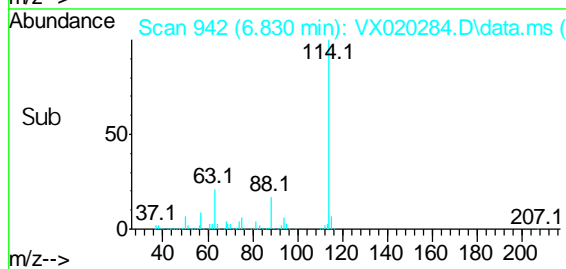
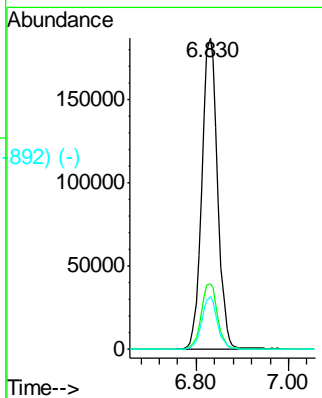


#34 (-)
 1,4-Difluorobenzene
 Concen: 50.00 ug/l
 RT: 6.830 min Scan# 942
 Delta R.T. 0.006 min
 Lab File: VX020284.D
 Acq: 22 Dec 2020 05:16

Instrument :
 MSVOA_X
ClientSampled :
 PB133709ZHE#15

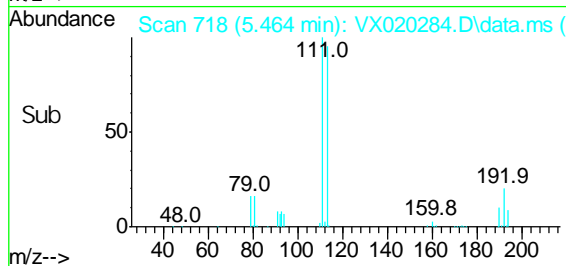
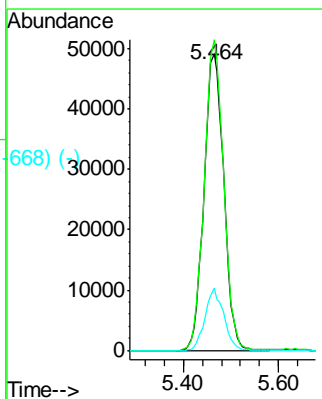
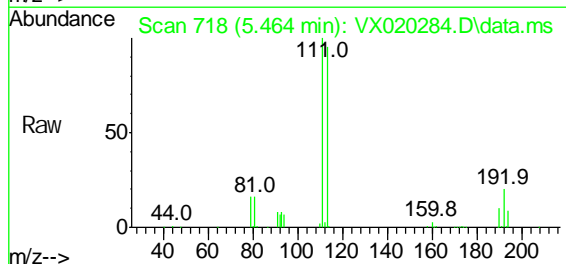


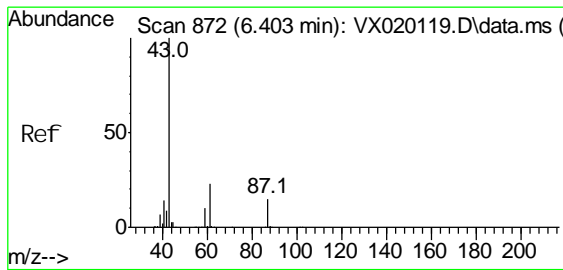
Tgt Ion: 114 Resp: 437651
 Ion Ratio Lower Upper
 114 100
 63 21.1 0.0 40.8
 88 16.7 0.0 32.8



#35 (-)
 Dibromofluoromethane
 Concen: 50.33 ug/l
 RT: 5.464 min Scan# 718
 Delta R.T. 0.006 min
 Lab File: VX020284.D
 Acq: 22 Dec 2020 05:16

Tgt Ion: 113 Resp: 140903
 Ion Ratio Lower Upper
 113 100
 111 102.5 81.9 122.9
 192 19.7 16.7 25.1

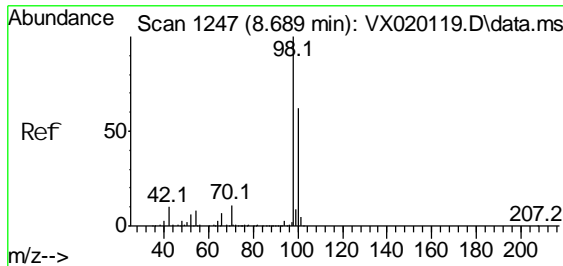
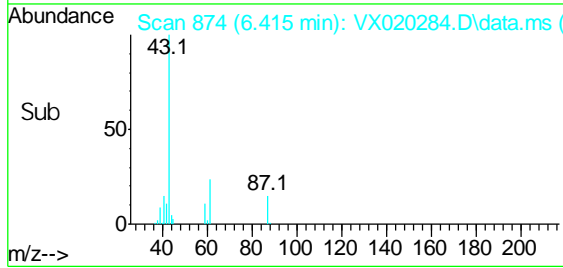
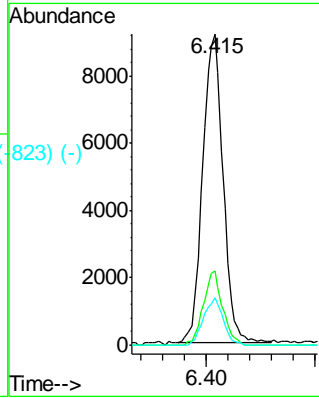
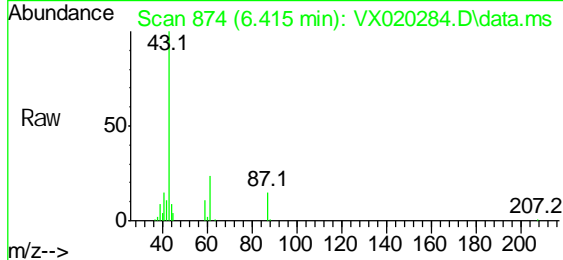




Isopropyl Acetate
 Concen: 3.37 ug/l
 RT: 6.415 min Scan# 874
 Delta R.T. C.012 min
 Lab File: VX020284.D
 Acq: 22 Dec 2020 05:16

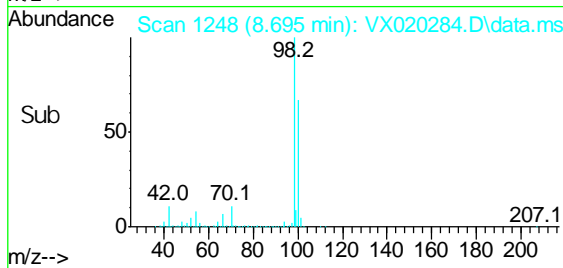
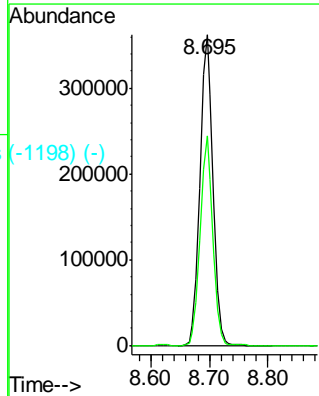
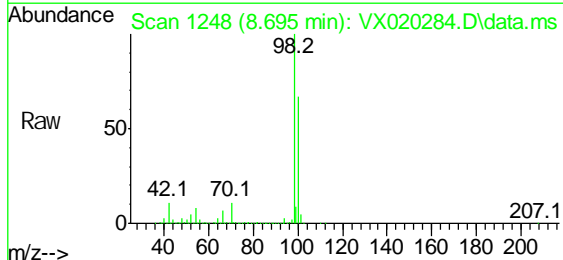
Instrument :
 MSVOA_X
ClientSampled :
 PB133709ZHE#15

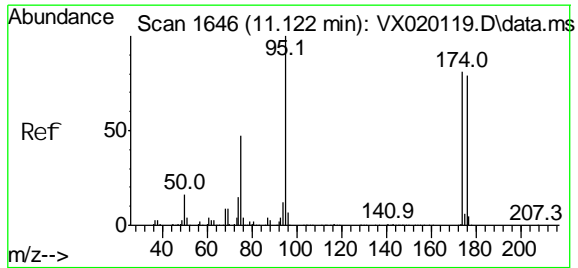
Tgt Ion:	43	Resp:	23898
Ion Ratio	Lower	Upper	
43	100		
61	22.3	18.2	27.4
87	14.4	12.5	18.7



Toluene-d8
 Concen: 51.59 ug/l
 RT: 8.695 min Scan# 1248
 Delta R.T. 0.006 min
 Lab File: VX020284.D
 Acq: 22 Dec 2020 05:16

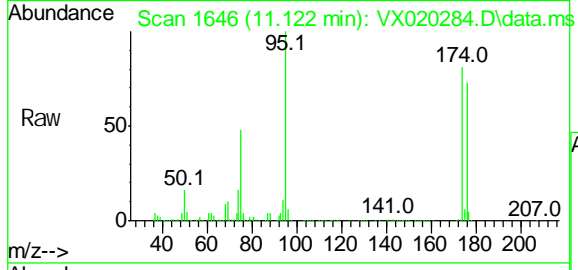
Tgt Ion:	98	Resp:	555989
Ion Ratio	Lower	Upper	
98	100		
100	65.8	51.9	77.9



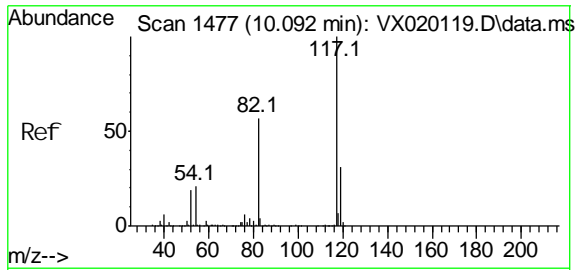
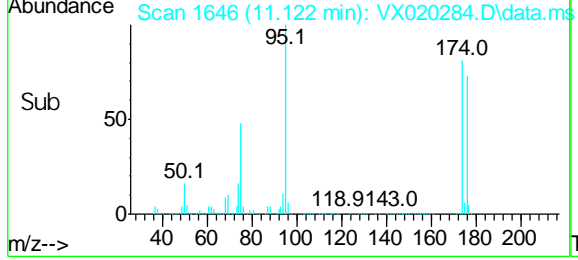
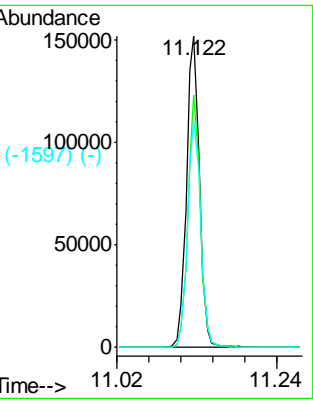


#639 (-)
 4-Bromofluorobenzene
 Concen: 46.02 ug/l
 RT: 11.122 min Scan# 1646
 Delta R.T. -0.000 min
 Lab File: VX020284.D
 Acq: 22 Dec 2020 05:16

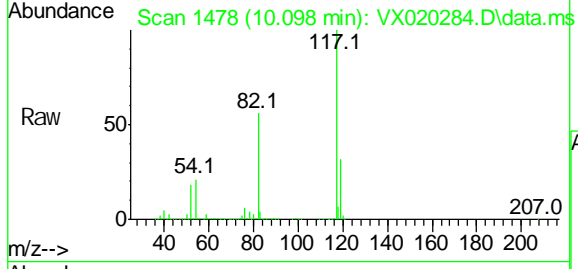
Instrument :
 MSVOA_X
ClientSampled :
 PB133709ZHE#15



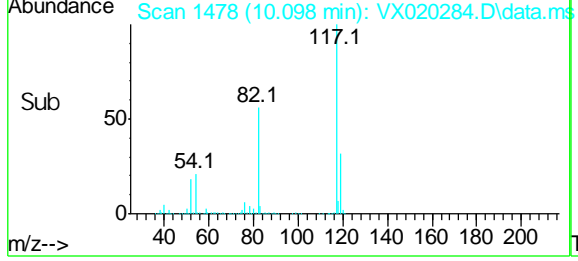
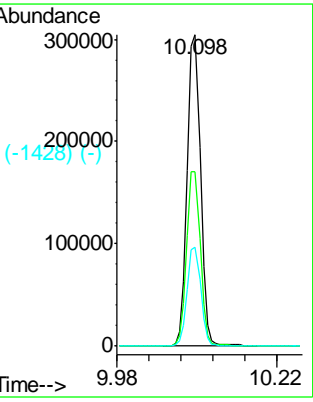
Tgt Ion: 95 Resp: 189815
 Ion Ratio Lower Upper
 95 100
 174 77.6 0.0 154.6
 176 73.7 0.0 155.8

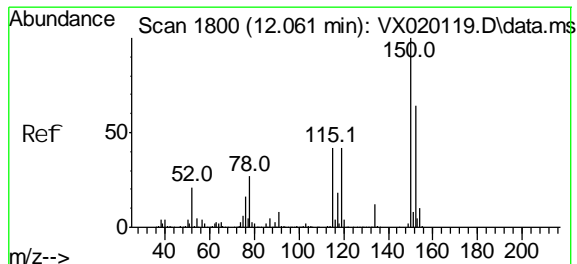


#640 (-)
 Chlorobenzene-d5
 Concen: 50.00 ug/l
 RT: 10.098 min Scan# 1478
 Delta R.T. 0.006 min
 Lab File: VX020284.D
 Acq: 22 Dec 2020 05:16



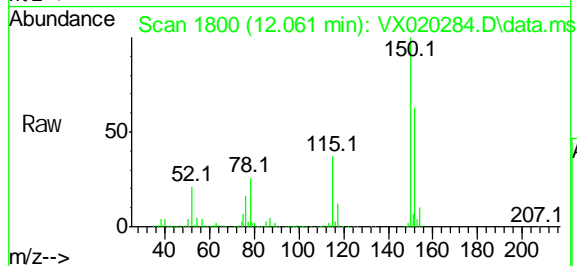
Tgt Ion: 117 Resp: 420411
 Ion Ratio Lower Upper
 117 100
 82 55.8 47.4 71.2
 119 31.5 26.6 39.8





1,4-Dichlorobenzene-d4
 Concn: 50.00 ug/l
 RT: 12.061 min Scan# 1800
 Delta R.T. -0.000 min
 Lab File: VX020284.D
 Acq: 22 Dec 2020 05:16

Instrument :
 MSVOA_X
ClientSampled :
 PB133709ZHE#15



Tgt Ion: 152 Resp: 175571

Ion Ratio	Lower	Upper
152	100	
115	59.7	41.1 123.3
150	157.9	0.0 349.0

