

Data Path : Z:\voasrv\HPCHEM1\MSVOA_X\Data\VX122121\
 Data File : VX025952.D
 Acq On : 21 Dec 2021 13:26
 Operator : JC/MD
 Sample : M5150-19DL 5X
 Misc : 5.0mL/MSVOA_X/WATER
 ALS Vial : 9 Sample Multiplier: 1

Instrument :
 MSVOA_X
 ClientSampleId :
 GBBX7DL

Quant Time: Dec 22 05:37:45 2021
 Quant Method : Z:\voasrv\HPCHEM1\MSVOA_X\Method\SFAMXLM122021WMA.M
 Quant Title : VOC Analysis
 QLast Update : Wed Dec 22 05:35:20 2021
 Response via : Initial Calibration

Compound	R.T.	QIon	Response	Conc	Units	Dev(Min)

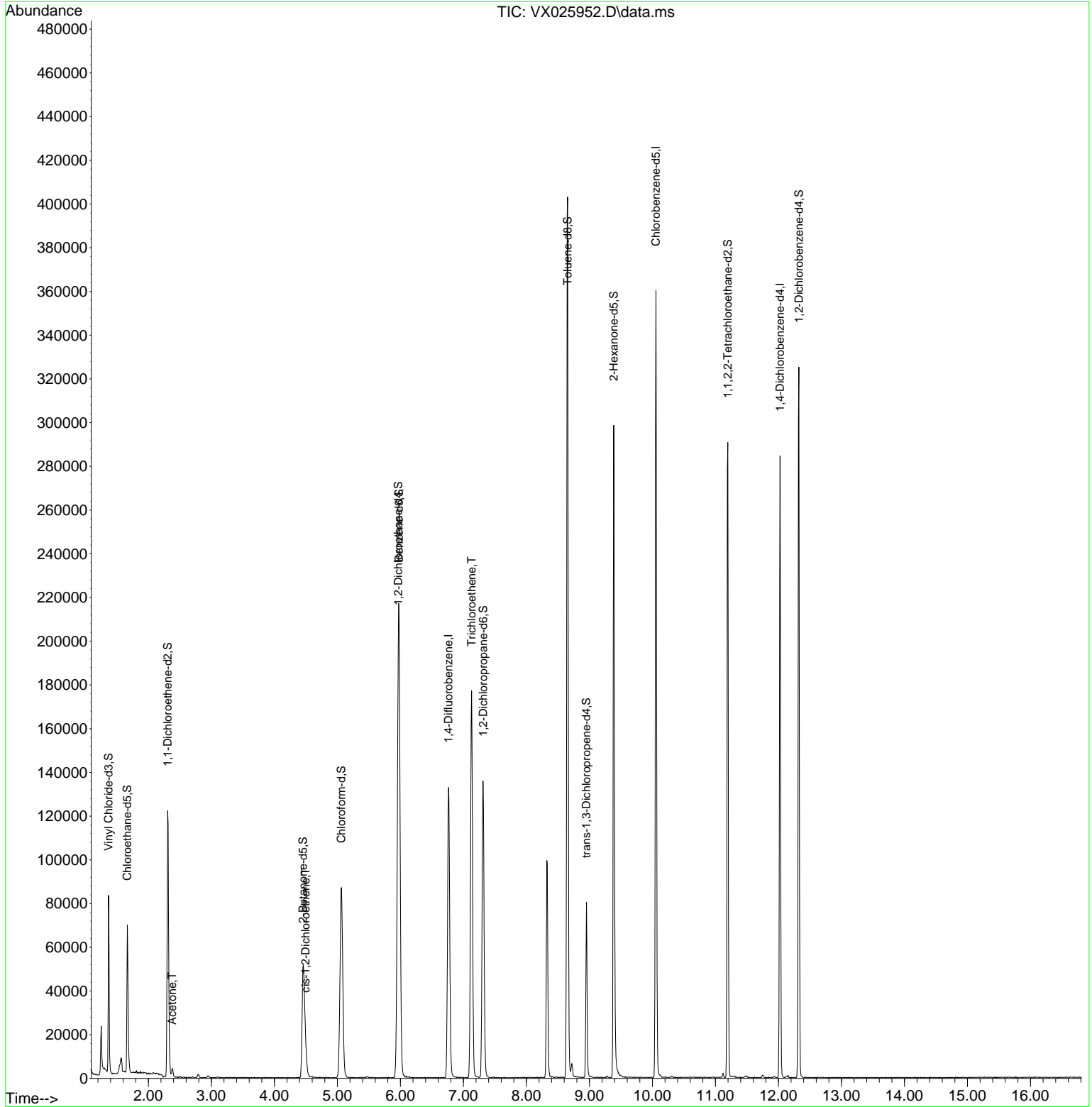
Internal Standards						
1) 1,4-Difluorobenzene	6.763	114	132424	50.000	ug/L	0.00
28) Chlorobenzene-d5	10.055	117	162100	50.000	ug/L	0.00
58) 1,4-Dichlorobenzene-d4	12.024	152	54953	50.000	ug/L	0.00
System Monitoring Compounds						
4) Vinyl Chloride-d3	1.368	65	49607	46.465	ug/L	0.00
Spiked Amount	50.000	Range 60 - 135	Recovery	=	92.940%	
7) Chloroethane-d5	1.666	69	45946	51.537	ug/L	0.00
Spiked Amount	50.000	Range 70 - 130	Recovery	=	103.080%	
11) 1,1-Dichloroethene-d2	2.307	63	70684	38.119	ug/L	0.00
Spiked Amount	50.000	Range 60 - 125	Recovery	=	76.240%	
21) 2-Butanone-d5	4.452	46	90011	116.870	ug/L	0.00
Spiked Amount	100.000	Range 40 - 130	Recovery	=	116.870%	
24) Chloroform-d	5.062	84	108949	53.236	ug/L	0.00
Spiked Amount	50.000	Range 70 - 125	Recovery	=	106.480%	
26) 1,2-Dichloroethane-d4	5.964	65	73388	54.982	ug/L	0.01
Spiked Amount	50.000	Range 70 - 125	Recovery	=	109.960%	
32) Benzene-d6	5.977	84	207402	42.231	ug/L	0.00
Spiked Amount	50.000	Range 70 - 125	Recovery	=	84.460%	
36) 1,2-Dichloropropane-d6	7.312	67	65487	43.780	ug/L	0.00
Spiked Amount	50.000	Range 70 - 120	Recovery	=	87.560%	
41) Toluene-d8	8.653	98	236827	50.788	ug/L	0.00
Spiked Amount	50.000	Range 80 - 120	Recovery	=	101.580%	
43) trans-1,3-Dichloroprop...	8.952	79	32554	49.291	ug/L	0.00
Spiked Amount	50.000	Range 60 - 125	Recovery	=	98.580%	
47) 2-Hexanone-d5	9.385	63	82524	122.730	ug/L	0.00
Spiked Amount	100.000	Range 45 - 130	Recovery	=	122.730%	
56) 1,1,2,2-Tetrachloroeth...	11.195	84	115289	54.406	ug/L	0.00
Spiked Amount	50.000	Range 65 - 120	Recovery	=	108.820%	
66) 1,2-Dichlorobenzene-d4	12.323	152	61469	53.067	ug/L	0.00
Spiked Amount	50.000	Range 80 - 120	Recovery	=	106.140%	
Target Compounds						
						Qvalue
13) Acetone	2.380	43	4121	6.688	ug/L	95
20) cis-1,2-Dichloroethene	4.495	96	5099	4.599	ug/L	91
34) Trichloroethene	7.129	95	65318	49.234	ug/L	90

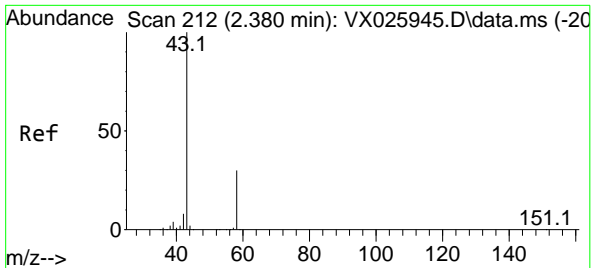
(#) = qualifier out of range (m) = manual integration (+) = signals summed

Data Path : Z:\voasrv\HPCHEM1\MSVOA_X\Data\VX122121\
 Data File : VX025952.D
 Acq On : 21 Dec 2021 13:26
 Operator : JC/MD
 Sample : M5150-19DL 5X
 Misc : 5.0mL/MSVOA_X/WATER
 ALS Vial : 9 Sample Multiplier: 1

Instrument :
 MSVOA_X
 ClientSampleId :
 GBBX7DL

Quant Time: Dec 22 05:37:45 2021
 Quant Method : Z:\voasrv\HPCHEM1\MSVOA_X\Method\SFAMXLM122021WMA.M
 Quant Title : VOC Analysis
 QLast Update : Wed Dec 22 05:35:20 2021
 Response via : Initial Calibration

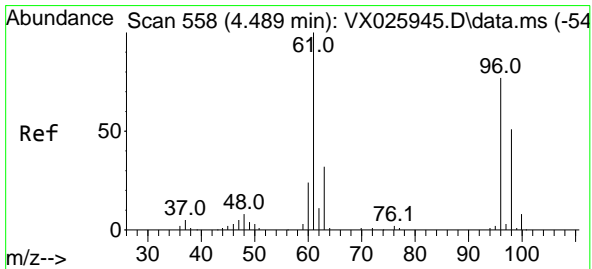
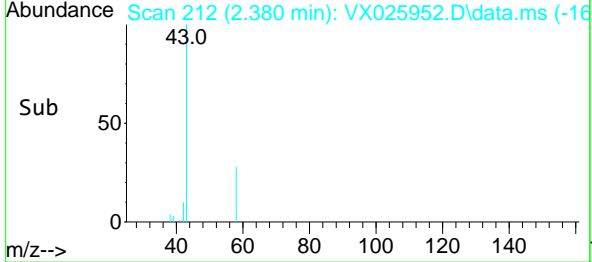
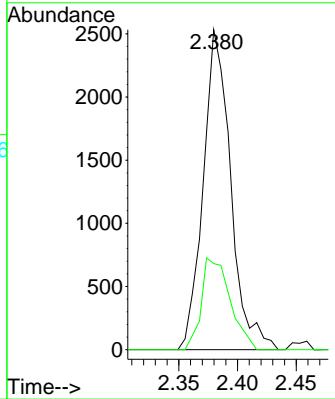
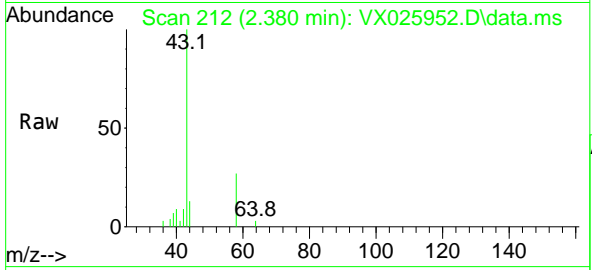




#13
 Acetone
 Concen: 6.688 ug/L
 RT: 2.380 min Scan# 21
 Delta R.T. 0.000 min
 Lab File: VX025952.D
 Acq: 21 Dec 2021 13:26

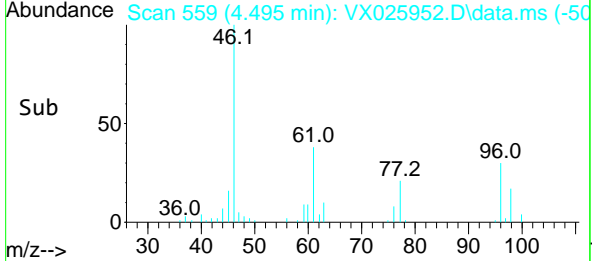
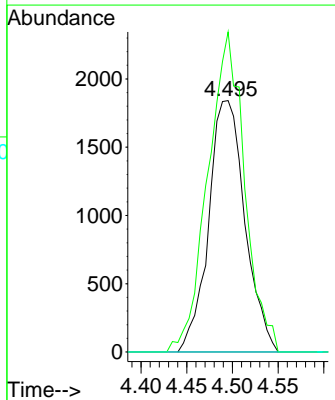
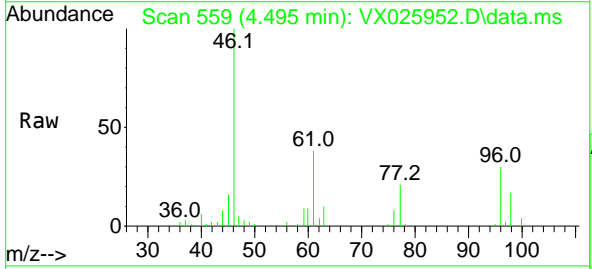
Instrument : MSVOA_X
 ClientSampleId : GBBX7DL

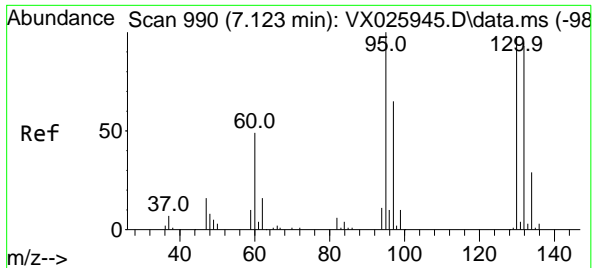
Tgt Ion: 43 Resp: 4121
 Ion Ratio Lower Upper
 43 100
 58 29.8 0.0 65.6



#20
 cis-1,2-Dichloroethene
 Concen: 4.599 ug/L
 RT: 4.495 min Scan# 559
 Delta R.T. 0.006 min
 Lab File: VX025952.D
 Acq: 21 Dec 2021 13:26

Tgt Ion: 96 Resp: 5099
 Ion Ratio Lower Upper
 96 100
 61 127.3 82.3 152.8
 68 0.0 0.0 0.0





#34
 Trichloroethene
 Concen: 49.234 ug/L
 RT: 7.129 min Scan# 991
 Delta R.T. 0.006 min
 Lab File: VX025952.D
 Acq: 21 Dec 2021 13:26

Instrument : MSVOA_X
 ClientSampleId : GBBX7DL

Tgt Ion: 95 Resp: 65318

Ion	Ratio	Lower	Upper
95	100		
97	63.7	46.0	85.4
132	92.5	75.0	139.2
130	100.2	77.9	144.7

