

Data Path : Z:\voasrv\HPCHEM1\MSVOA_X\Data\VX122121\
 Data File : VX025966.D
 Acq On : 21 Dec 2021 18:52
 Operator : JC/MD
 Sample : M5126-13
 Misc : 5.0mL/MSVOA_X/WATER
 ALS Vial : 23 Sample Multiplier: 1

Instrument :
 MSVOA_X
 ClientSampleId :
 C0J22

Integration Parameters: LSCINT.P

Integrator: RTE
 Smoothing : OFF Filtering: 5
 Sampling : 1 Min Area: 0 % of largest Peak
 Start Thrs: 0.2 Max Peaks: 100
 Stop Thrs : 0 Peak Location: TOP

If leading or trailing edge < 100 prefer < Baseline drop else tangent >
 Peak separation: 5

Method : Z:\voasrv\HPCHEM1\MSVOA_X\Method\SFAMXLM122021WMA.M
 Title : VOC Analysis

Signal : TIC: VX025966.D\data.ms

peak #	R.T. min	first scan	max scan	last scan	PK TY	peak height	corr. area	corr. % max.	% of total
1	1.368	43	46	55	rVB	79966	83048	10.51%	1.435%
2	1.666	91	95	104	rVB	73975	91426	11.57%	1.580%
3	2.306	194	200	209	rBV	121349	198723	25.15%	3.435%
4	2.703	262	265	269	rBV2	263	443	0.06%	0.008%
5	2.782	276	278	280	rBV3	394	484	0.06%	0.008%
6	2.940	299	304	305	rBV2	722	799	0.10%	0.014%
7	3.111	330	332	335	rBV	124	159	0.02%	0.003%
8	3.325	364	367	374	rBV4	619	1349	0.17%	0.023%
9	3.416	380	382	385	rBV2	149	173	0.02%	0.003%
10	3.538	401	402	403	rBV	291	157	0.02%	0.003%
11	3.763	437	439	440	rBV	248	156	0.02%	0.003%
12	3.891	457	460	463	rBV2	156	180	0.02%	0.003%
13	4.093	491	493	496	rBV2	156	209	0.03%	0.004%
14	4.135	498	500	503	rBV2	159	171	0.02%	0.003%
15	4.233	505	516	519	rBV5	747	1909	0.24%	0.033%
16	4.349	533	535	537	rVB2	329	261	0.03%	0.005%
17	4.385	537	541	542	rBV2	179	282	0.04%	0.005%
18	4.458	542	553	570	rBV	51305	147631	18.68%	2.552%
19	4.794	607	608	610	rBV	186	152	0.02%	0.003%
20	5.062	640	652	668	rBV	90002	266951	33.78%	4.614%
21	5.428	710	712	715	rVB2	268	179	0.02%	0.003%
22	5.635	744	746	750	rVB2	206	308	0.04%	0.005%
23	5.672	750	752	754	rBV	222	172	0.02%	0.003%
24	5.696	754	756	759	rBV2	165	178	0.02%	0.003%
25	5.769	766	768	770	rBV2	223	156	0.02%	0.003%
26	5.879	784	786	789	rBV2	204	151	0.02%	0.003%
27	5.970	789	801	817	rBV3	214988	641239	81.15%	11.083%
28	6.318	856	858	860	rBV2	170	177	0.02%	0.003%
29	6.342	860	862	864	rVV2	248	181	0.02%	0.003%
30	6.385	868	869	873	rVB	295	198	0.03%	0.003%
31	6.489	885	886	889	rBV	203	185	0.02%	0.003%
32	6.550	893	896	898	rBV	180	218	0.03%	0.004%
33	6.763	917	931	942	rBV	143164	347676	44.00%	6.009%
34	7.117	982	989	996	rBV5	4705	11069	1.40%	0.191%
35	7.190	999	1001	1002	rBV	288	182	0.02%	0.003%
36	7.312	1011	1021	1035	rBV	192501	402489	50.94%	6.957%

Data Path : Z:\voasrv\HPCHEM1\MSVOA_X\Data\VX122121\
 Data File : VX025966.D
 Acq On : 21 Dec 2021 18:52
 Operator : JC/MD
 Sample : M5126-13
 Misc : 5.0mL/MSVOA_X/WATER
 ALS Vial : 23 Sample Multiplier: 1

Instrument :
 MSVOA_X
 ClientSampleId :
 C0J22

Integration Parameters: LSCINT.P

Integrator: RTE
 Smoothing : OFF
 Sampling : 1
 Start Thrs: 0.2
 Stop Thrs : 0

Filtering: 5
 Min Area: 0 % of largest Peak
 Max Peaks: 100
 Peak Location: TOP

If leading or trailing edge < 100 prefer < Baseline drop else tangent >
 Peak separation: 5

Method : Z:\voasrv\HPCHEM1\MSVOA_X\Method\SFAMXML122021WMA.M
 Title : VOC Analysis

37	7.586	1061	1066	1072	rBV5	1745	3613	0.46%	0.062%
38	7.848	1106	1109	1110	rBV	1951	1787	0.23%	0.031%
39	8.000	1133	1134	1136	rBV	226	212	0.03%	0.004%
40	8.098	1147	1150	1153	rBV2	212	329	0.04%	0.006%
41	8.330	1181	1188	1197	rBV	118614	199824	25.29%	3.454%
42	8.476	1209	1212	1220	rBV3	561	1163	0.15%	0.020%
43	8.574	1226	1228	1233	rBV2	573	868	0.11%	0.015%
44	8.653	1234	1241	1248	rVV	490907	790197	100.00%	13.658%
45	8.720	1249	1252	1260	rVB2	8387	14185	1.80%	0.245%
46	8.952	1284	1290	1301	rBV	83117	119555	15.13%	2.066%
47	9.281	1342	1344	1346	rBV2	417	388	0.05%	0.007%
48	9.384	1355	1361	1374	rBV	345805	512955	64.91%	8.866%
49	9.683	1408	1410	1411	rBV	306	198	0.03%	0.003%
50	9.805	1428	1430	1432	rBV2	353	312	0.04%	0.005%
51	9.829	1432	1434	1435	rBV	440	315	0.04%	0.005%
52	10.055	1465	1471	1488	rBV	504194	685807	86.79%	11.854%
53	10.244	1498	1502	1504	rBV	769	898	0.11%	0.016%
54	10.311	1509	1513	1518	rVB4	1026	1317	0.17%	0.023%
55	10.646	1566	1568	1573	rVB2	586	776	0.10%	0.013%
56	10.860	1600	1603	1606	rBV3	942	916	0.12%	0.016%
57	11.030	1628	1631	1636	rVB	755	808	0.10%	0.014%
58	11.122	1642	1646	1652	rVB2	1815	2521	0.32%	0.044%
59	11.195	1652	1658	1665	rBV	365679	456554	57.78%	7.891%
60	11.299	1673	1675	1679	rVB3	505	509	0.06%	0.009%
61	11.415	1692	1694	1697	rVB	269	218	0.03%	0.004%
62	11.439	1697	1698	1700	rBV	256	176	0.02%	0.003%
63	11.482	1702	1705	1708	rVB2	429	466	0.06%	0.008%
64	11.597	1723	1724	1725	rBV	236	156	0.02%	0.003%
65	11.707	1738	1742	1743	rBV	156	167	0.02%	0.003%
66	11.750	1746	1749	1758	rVV4	1212	2080	0.26%	0.036%
67	11.841	1762	1764	1767	rBV2	221	192	0.02%	0.003%
68	11.933	1776	1779	1783	rBV3	566	744	0.09%	0.013%
69	12.024	1789	1794	1803	rBV	300645	374381	47.38%	6.471%
70	12.122	1808	1810	1813	rBV2	463	544	0.07%	0.009%
71	12.225	1821	1827	1832	rBV5	2105	2936	0.37%	0.051%
72	12.323	1837	1843	1851	rVV	313550	400584	50.69%	6.924%
73	12.384	1851	1853	1858	rVB3	236	303	0.04%	0.005%
74	12.463	1864	1866	1867	rBV	219	178	0.02%	0.003%
75	12.481	1867	1869	1871	rVV	343	278	0.04%	0.005%
76	12.518	1873	1875	1877	rVV2	165	160	0.02%	0.003%

Data Path : Z:\voasrv\HPCHEM1\MSVOA_X\Data\VX122121\
 Data File : VX025966.D
 Acq On : 21 Dec 2021 18:52
 Operator : JC/MD
 Sample : M5126-13
 Misc : 5.0mL/MSVOA_X/WATER
 ALS Vial : 23 Sample Multiplier: 1

Instrument :
 MSVOA_X
 ClientSampleId :
 C0J22

Integration Parameters: LSCINT.P

Integrator: RTE
 Smoothing : OFF
 Sampling : 1
 Start Thrs : 0.2
 Stop Thrs : 0

Filtering: 5
 Min Area: 0 % of largest Peak
 Max Peaks: 100
 Peak Location: TOP

If leading or trailing edge < 100 prefer < Baseline drop else tangent >
 Peak separation: 5

Method : Z:\voasrv\HPCHEM1\MSVOA_X\Method\SFAMXLM122021WMA.M
 Title : VOC Analysis

77	12.597	1887	1888	1890	rBV	312	230	0.03%	0.004%
78	12.957	1945	1947	1951	rVB2	254	236	0.03%	0.004%
79	13.201	1985	1987	1988	rBV	264	191	0.02%	0.003%
80	13.567	2045	2047	2049	rVB	356	263	0.03%	0.005%
81	13.591	2049	2051	2053	rBV2	267	311	0.04%	0.005%
82	13.847	2090	2093	2095	rBV2	143	165	0.02%	0.003%
83	13.932	2103	2107	2110	rBV2	206	279	0.04%	0.005%
84	14.030	2120	2123	2124	rVB2	199	158	0.02%	0.003%
85	14.402	2181	2184	2185	rBV2	190	153	0.02%	0.003%
86	14.725	2235	2237	2239	rBV	290	289	0.04%	0.005%
87	14.798	2247	2249	2252	rBV2	281	330	0.04%	0.006%
88	14.829	2252	2254	2256	rBV	184	161	0.02%	0.003%
89	14.896	2261	2265	2268	rBV3	233	368	0.05%	0.006%
90	14.987	2276	2280	2281	rBV	257	224	0.03%	0.004%
91	15.048	2286	2290	2292	rBV3	319	402	0.05%	0.007%
92	15.396	2345	2347	2350	rVB	324	373	0.05%	0.006%
93	15.426	2350	2352	2353	rBV2	269	219	0.03%	0.004%
94	15.719	2396	2400	2401	rBV2	181	205	0.03%	0.004%
95	15.792	2409	2412	2418	rBV2	376	646	0.08%	0.011%
96	15.841	2418	2420	2424	rBV2	272	333	0.04%	0.006%
97	15.871	2424	2425	2428	rVB2	356	196	0.02%	0.003%
98	16.249	2485	2487	2490	rBV3	285	336	0.04%	0.006%
99	16.523	2529	2532	2534	rBV3	228	340	0.04%	0.006%
100	16.779	2573	2574	2575	rBV	354	240	0.03%	0.004%

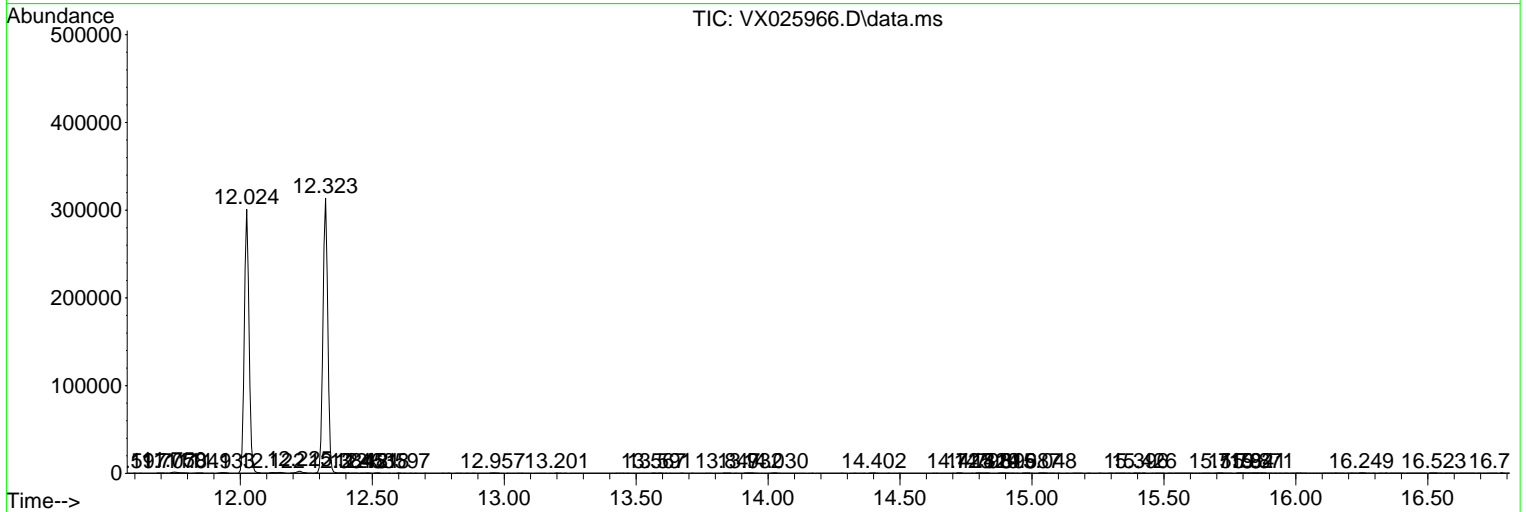
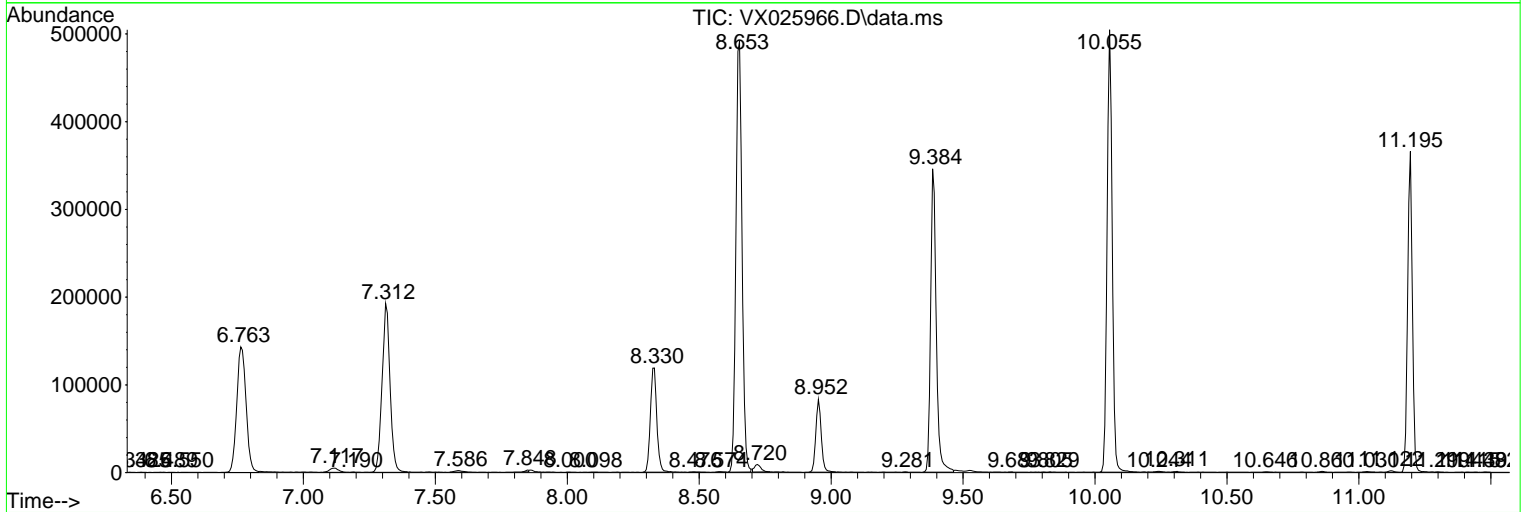
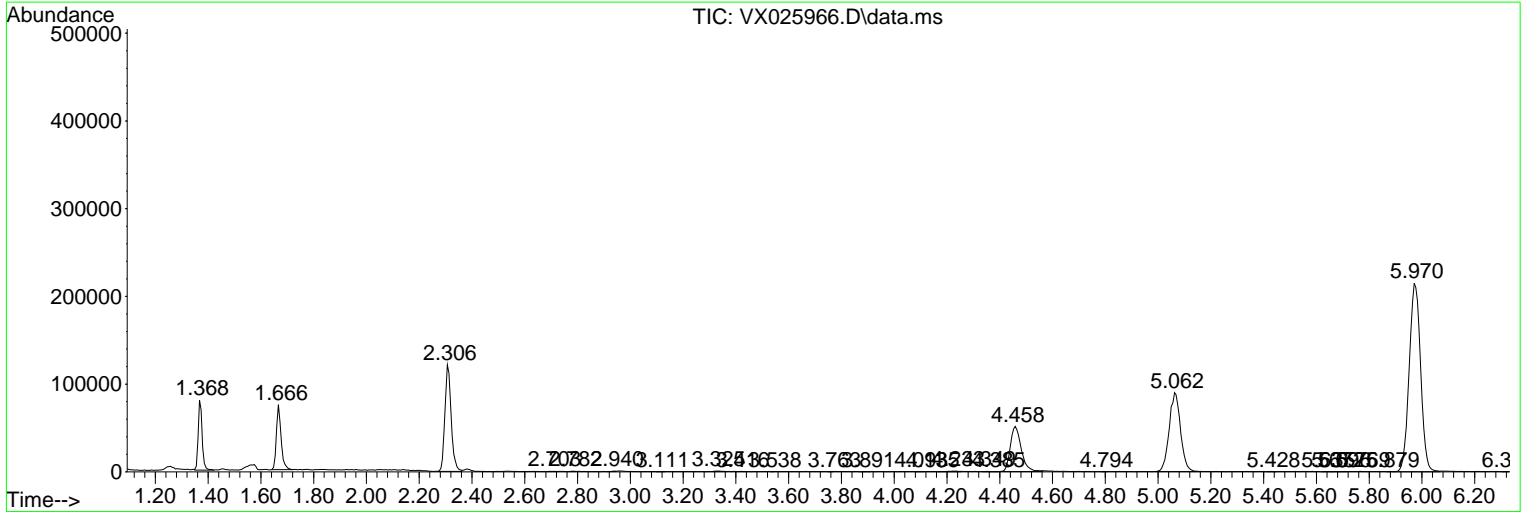
Sum of corrected areas: 5785639

Data Path : Z:\voasrv\HPCHEM1\MSVOA_X\Data\VX122121\
 Data File : VX025966.D
 Acq On : 21 Dec 2021 18:52
 Operator : JC/MD
 Sample : M5126-13
 Misc : 5.0mL/MSVOA_X/WATER
 ALS Vial : 23 Sample Multiplier: 1

Instrument :
 MSVOA_X
 ClientSampleId :
 C0J22

Quant Method : Z:\voasrv\HPCHEM1\MSVOA_X\Method\SFAMXLM122021WMA.M
 Quant Title : VOC Analysis

TIC Library : C:\Database\NIST20.L
 TIC Integration Parameters: LSCINT.P



Library Search Compound Report

Data Path : Z:\voasrv\HPCHEM1\MSVOA_X\Data\VX122121\
Data File : VX025966.D
Acq On : 21 Dec 2021 18:52
Operator : JC/MD
Sample : M5126-13
Misc : 5.0mL/MSVOA_X/WATER
ALS Vial : 23 Sample Multiplier: 1

Instrument :
MSVOA_X
ClientSampleId :
C0J22

Quant Method : Z:\voasrv\HPCHEM1\MSVOA_X\Method\SFAMXML122021WMA.M
Quant Title : VOC Analysis

TIC Library : C:\Database\NIST20.L
TIC Integration Parameters: LSCINT.P

No Library Search Compounds Detected

Data Path : Z:\voasrv\HPCHEM1\MSVOA_X\Data\VX122121\
Data File : VX025966.D
Acq On : 21 Dec 2021 18:52
Operator : JC/MD
Sample : M5126-13
Misc : 5.0mL/MSVOA_X/WATER
ALS Vial : 23 Sample Multiplier: 1

Instrument :
MSVOA_X
ClientSampleId :
C0J22

Quant Method : Z:\voasrv\HPCHEM1\MSVOA_X\Method\SFAMXLM122021WMA.M
Quant Title : VOC Analysis

TIC Library : C:\Database\NIST0.L
TIC Integration Parameters: LSCINT.P

TIC Top Hit name	RT	EstConc	Units	Response	--Internal Standard--			
					#	RT	Resp	Conc
