

Data Path : Z:\VOASRV\HPCHEM1\MSVOA X\DATA\VX122218\
 Data File : VX006767.D
 Acq On : 22 Dec 2018 13:03
 Operator : JC/MD
 Sample : J6497-02
 Misc : 5.0mL/MSVOA X/WATER
 ALS Vial : 7 Sample Multiplier: 1

Instrument :
 MSVOA_X
 ClientSampled :
 MW-2

Quant Time: Dec 24 04:23:47 2018
 Quant Method : Z:\VOASRV\HPCHEM1\MSVOA_X\METHOD\82X121818W.M
 Quant Title : SW846 8260
 QLast Update : Wed Dec 19 15:20:58 2018
 Response via : Initial Calibration

Internal Standards	R.T.	QIon	Response	Conc	Units	Dev(Min)
1) Pentafluorobenzene	5.67	168	645469	50.00	ug/l	0.00
34) 1,4-Difluorobenzene	6.86	114	1004199	50.00	ug/l	0.00
63) Chlorobenzene-d5	10.11	117	908612	50.00	ug/l	0.00
72) 1,4-Dichlorobenzene-d4	12.08	152	422883	50.00	ug/l	0.00

System Monitoring Compounds

33) 1,2-Dichloroethane-d4	6.07	65	348879	50.15	ug/l	0.00
Spiked Amount	50.000		Recovery	=	100.30%	
35) Dibromofluoromethane	5.51	113	302451	47.63	ug/l	0.00
Spiked Amount	50.000		Recovery	=	95.26%	
50) Toluene-d8	8.71	98	1170749	48.90	ug/l	0.00
Spiked Amount	50.000		Recovery	=	97.80%	
62) 4-Bromofluorobenzene	11.13	95	410685	46.84	ug/l	0.00
Spiked Amount	50.000		Recovery	=	93.68%	

Target Compounds

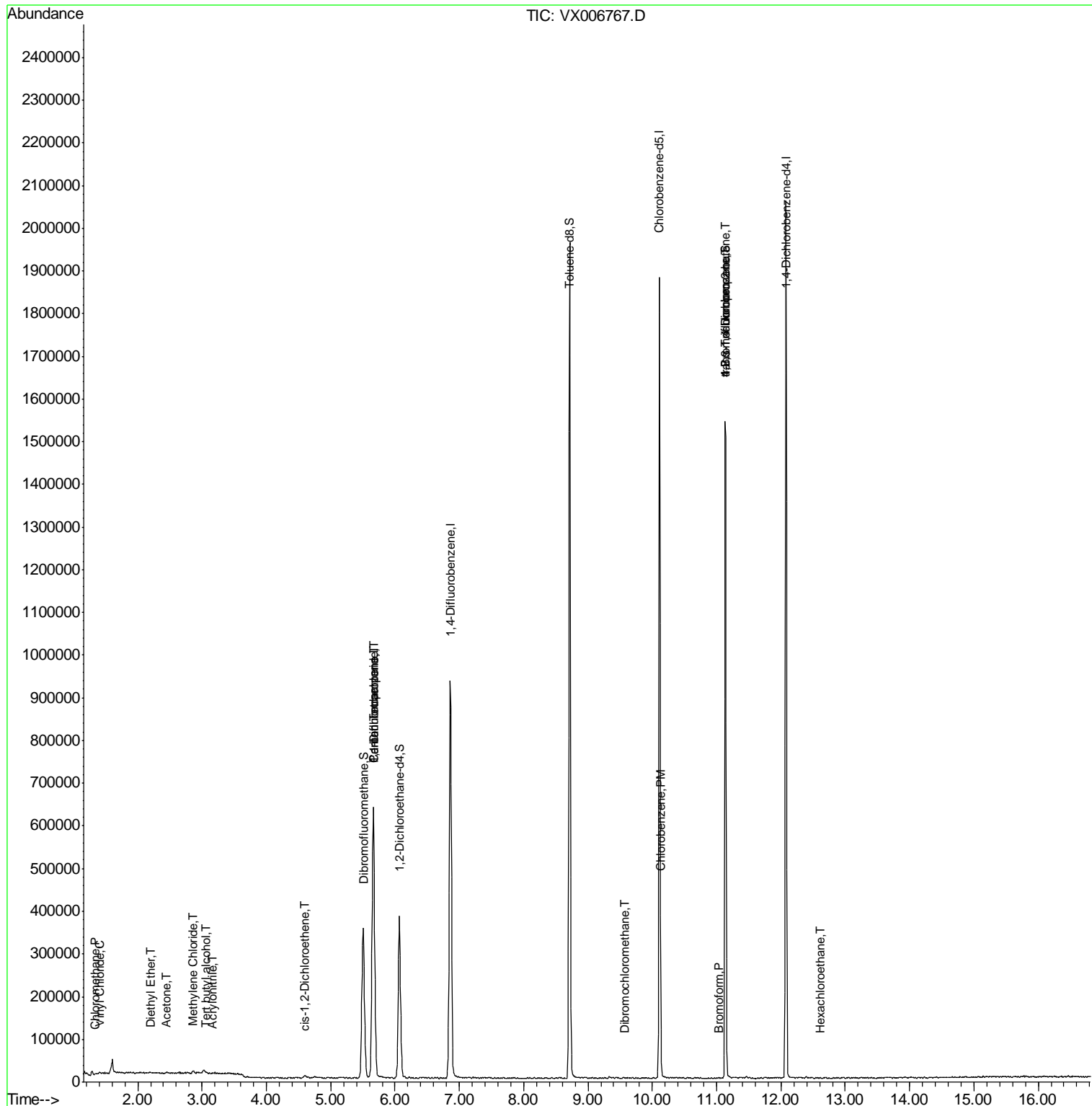
					Qvalue
3) Chloromethane	1.33	50	1568	0.246 ug/l	91
4) Vinyl Chloride	1.41	62	3891	0.586 ug/l	100
5) Bromomethane	1.65	94	618	Below Cal	# 21
8) Diethyl Ether	2.20	74	1236	0.300 ug/l	93
11) Tert butyl alcohol	3.06	59	2739	1.764 ug/l	# 88
15) Acrylonitrile	3.17	53	941	0.273 ug/l	# 34
16) Acetone	2.45	43	1898	0.594 ug/l	# 81
20) Methylene Chloride	2.86	84	2745	0.415 ug/l	# 68
27) cis-1,2-Dichloroethene	4.60	96	3985	0.565 ug/l	92
28) Bromochloromethane	5.04	49	113	Below Cal	# 54
36) 1,1-Dichloropropene	5.67	75	42299	5.086 ug/l	# 48
38) Carbon Tetrachloride	5.67	117	59844	7.404 ug/l	# 14
49) 1,4-Dioxane	7.73	88	87	Below Cal	# 1
60) Dibromochloromethane	9.59	129	94	2.337 ug/l	99
65) Chlorobenzene	10.13	112	5091	0.265 ug/l	# 83
71) Bromoform	11.04	173	114	4.479 ug/l	# 28
76) 1,2,3-Trichloropropane	11.13	75	192182	24.454 ug/l	# 40
81) trans-1,4-Dichloro-2-buten	11.13	75	192182	72.353 ug/l	# 10
90) Hexachloroethane	12.61	117	32	3.301 ug/l	# 6

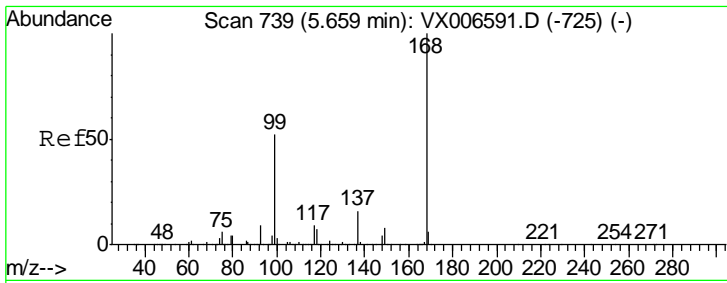
(#) = qualifier out of range (m) = manual integration (+) = signals summed

Data Path : Z:\VOASRV\HPCHEM1\MSVOA X\DATA\VX122218\
 Data File : VX006767.D
 Acq On : 22 Dec 2018 13:03
 Operator : JC/MD
 Sample : J6497-02
 Misc : 5.0mL/MSVOA X/WATER
 ALS Vial : 7 Sample Multiplier: 1

Instrument :
 MSVOA_X
 Client Sampled :
 MW-2

Quant Time: Dec 24 04:23:47 2018
 Quant Method : Z:\VOASRV\HPCHEM1\MSVOA_X\METHOD\82X121818W.M
 Quant Title : SW846 8260
 QLast Update : Wed Dec 19 15:20:58 2018
 Response via : Initial Calibration

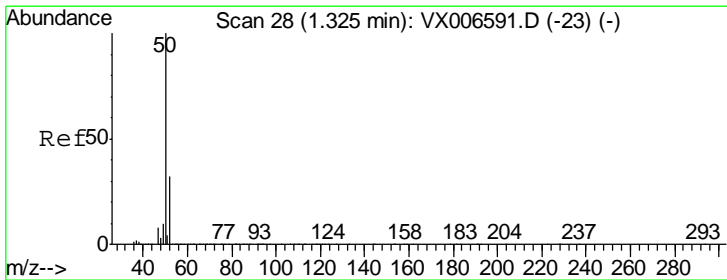
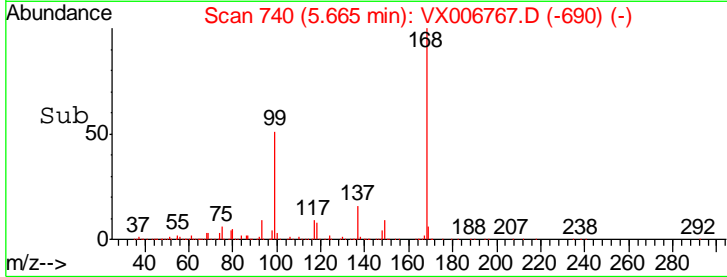
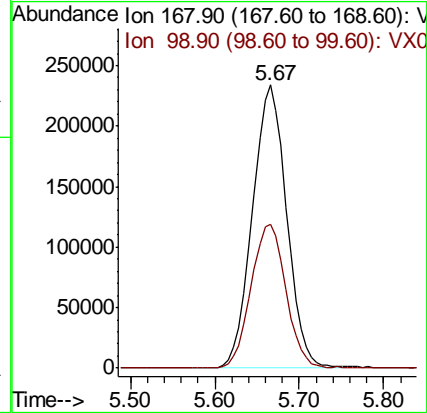
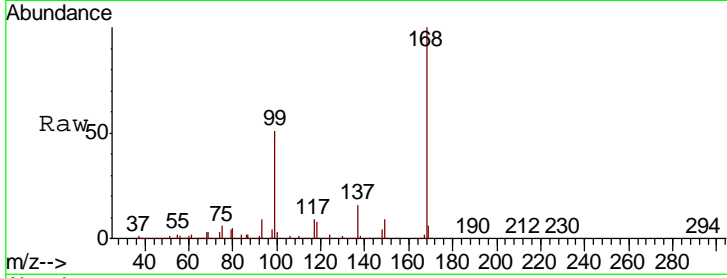




#1
 Pentafluorobenzene
 Concen: 50.000 ug/l
 RT: 5.67 min Scan# 740
 Delta R.T. 0.01 min
 Lab File: VX006767.D
 Acq: 22 Dec 2018 13:03

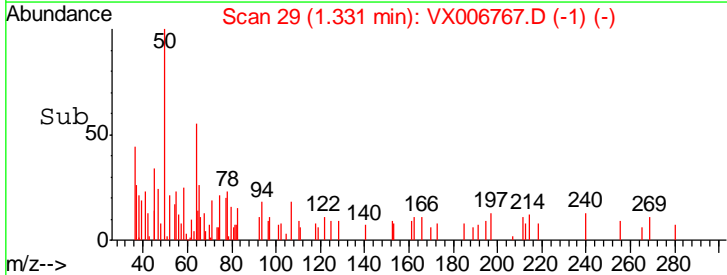
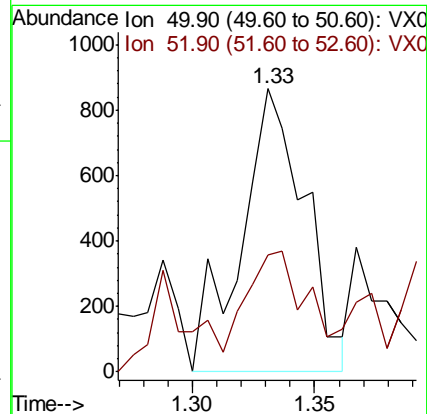
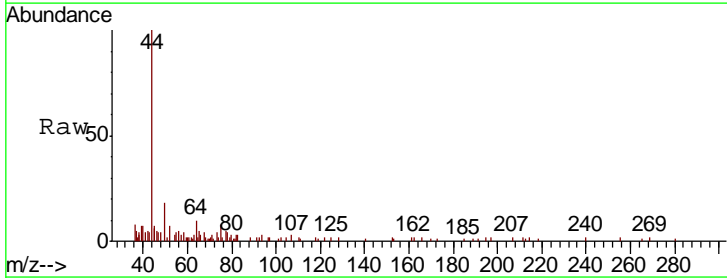
Instrument :
 MSVOA_X
 ClientSampled :
 MW-2

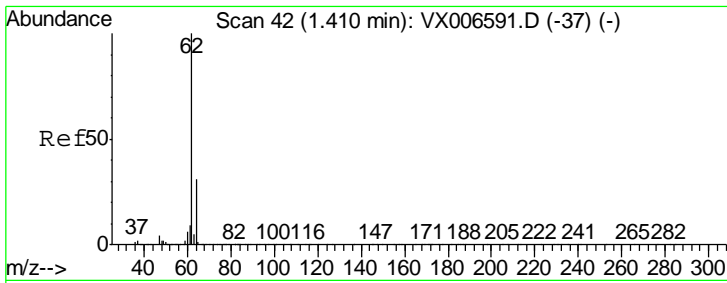
Tgt Ion	Resp	Lower	Upper
168	100		
99	50.9	41.8	62.8



#3
 Chloromethane
 Concen: 0.246 ug/l
 RT: 1.33 min Scan# 29
 Delta R.T. 0.01 min
 Lab File: VX006767.D
 Acq: 22 Dec 2018 13:03

Tgt Ion	Resp	Lower	Upper
50	100		
52	27.1	25.4	38.2

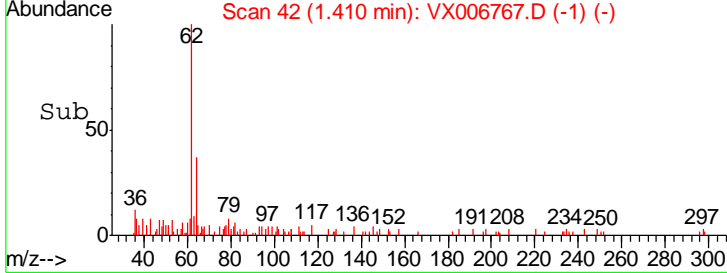
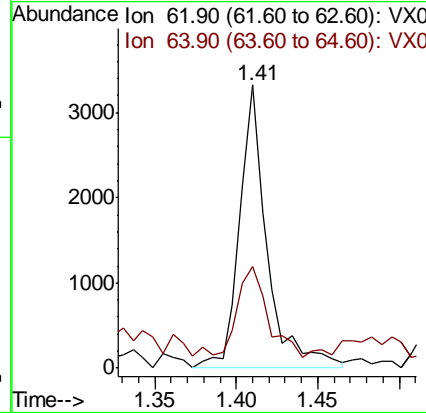
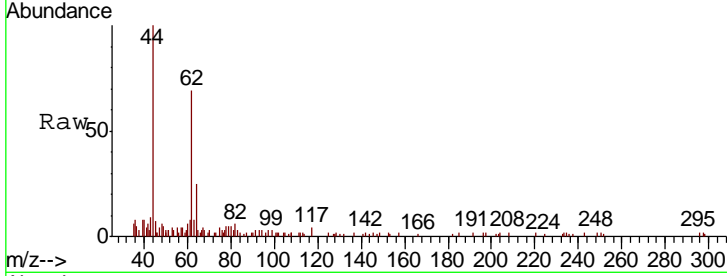




#4
 Vinyl Chloride
 Concen: 0.586 ug/l
 RT: 1.41 min Scan# 42
 Delta R.T. 0.00 min
 Lab File: VX006767.D
 Acq: 22 Dec 2018 13:03

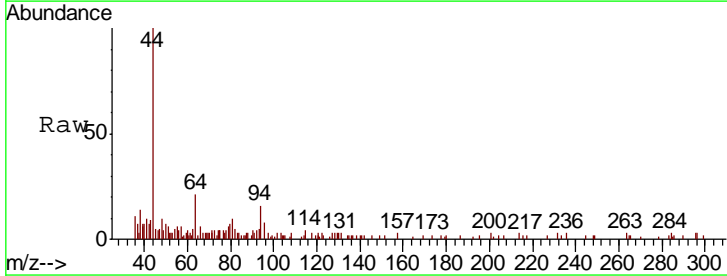
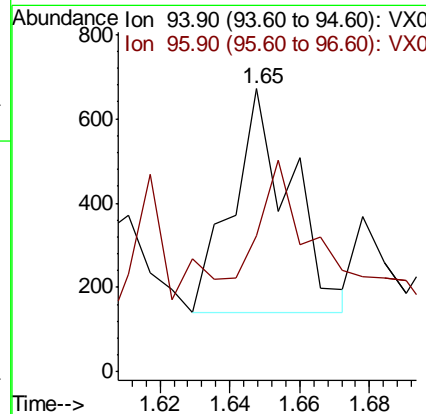
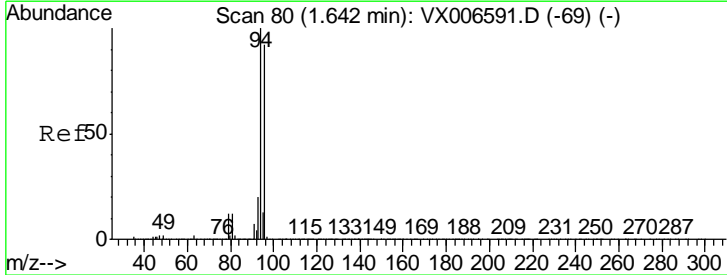
Instrument :
 MSVOA_X
 ClientSampled :
 MW-2

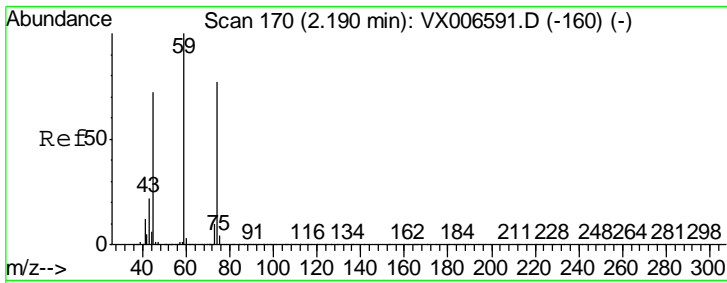
Tgt Ion	Resp	Lower	Upper
62	100		
64	31.5	25.1	37.7



#5
 Bromomethane
 Concen: Below Cal
 RT: 1.65 min Scan# 81
 Delta R.T. 0.01 min
 Lab File: VX006767.D
 Acq: 22 Dec 2018 13:03

Tgt Ion	Resp	Lower	Upper
94	100		
96	16.9	73.4	110.2#

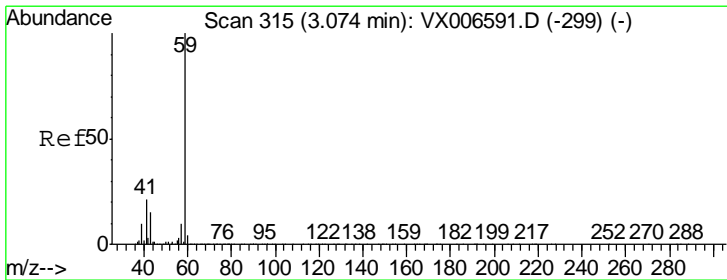
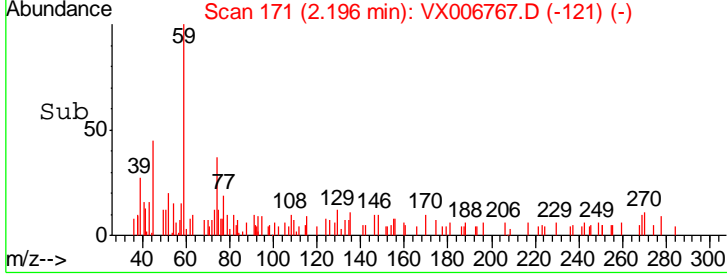
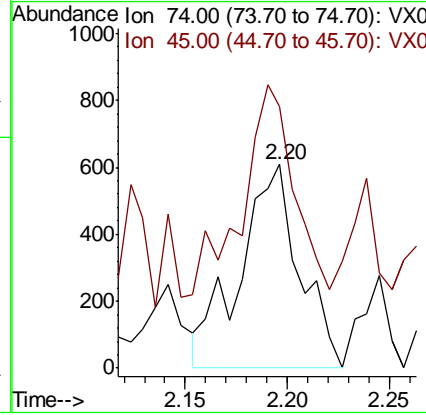
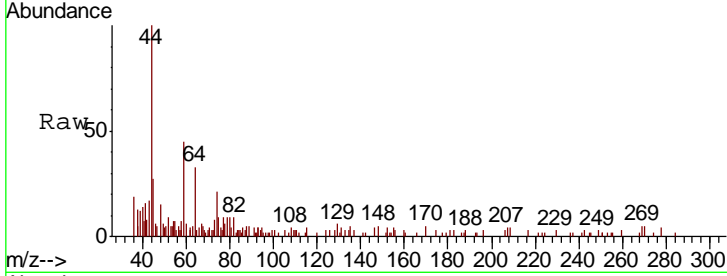




#8
 Diethyl Ether
 Concen: 0.300 ug/l
 RT: 2.20 min Scan# 171
 Delta R.T. 0.01 min
 Lab File: VX006767.D
 Acq: 22 Dec 2018 13:03

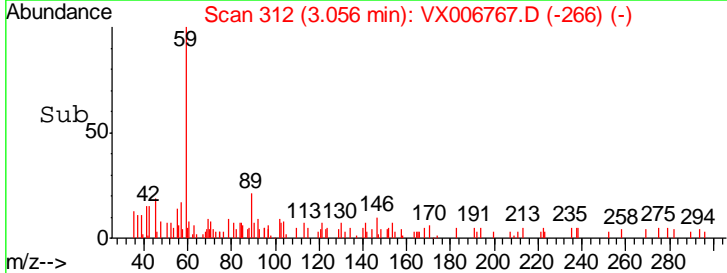
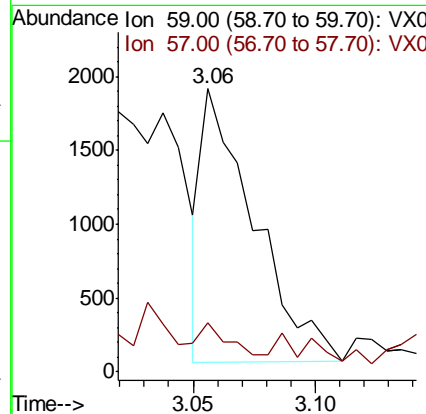
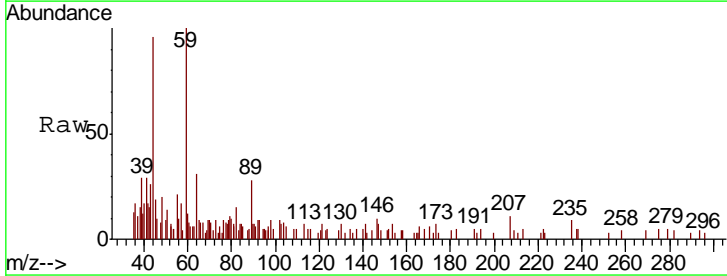
Instrument :
 MSVOA_X
ClientSampled :
 MW-2

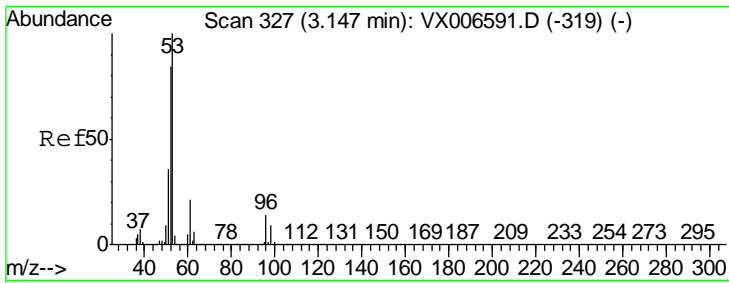
Tgt Ion: 74 Resp: 1236
 Ion Ratio Lower Upper
 74 100
 45 99.7 46.3 138.9



#11
 Tert butyl alcohol
 Concen: 1.764 ug/l
 RT: 3.06 min Scan# 312
 Delta R.T. -0.02 min
 Lab File: VX006767.D
 Acq: 22 Dec 2018 13:03

Tgt Ion: 59 Resp: 2739
 Ion Ratio Lower Upper
 59 100
 57 6.0 8.5 12.7#

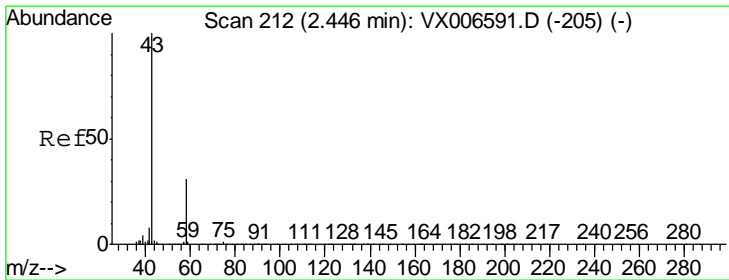
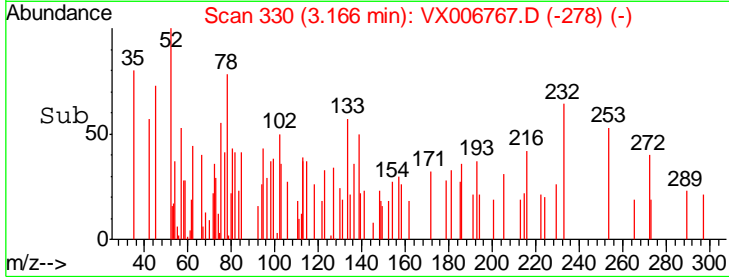
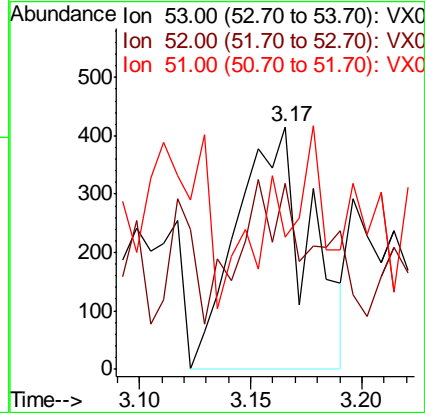
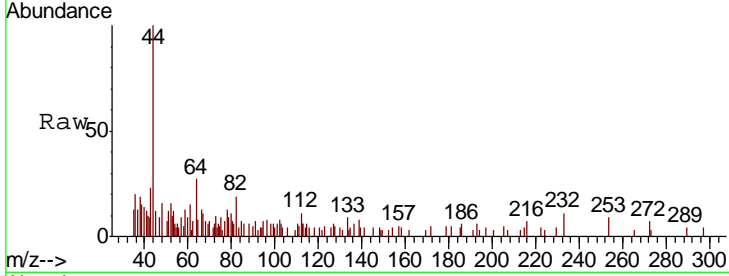




#15
 Acrylonitrile
 Concen: 0.273 ug/l
 RT: 3.17 min Scan# 330
 Delta R.T. 0.02 min
 Lab File: VX006767.D
 Acq: 22 Dec 2018 13:03

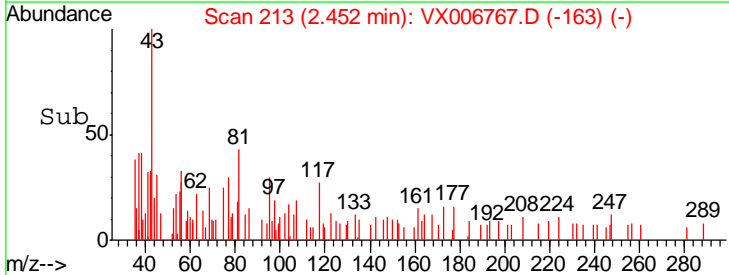
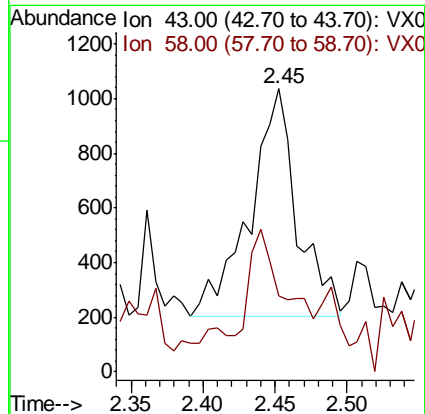
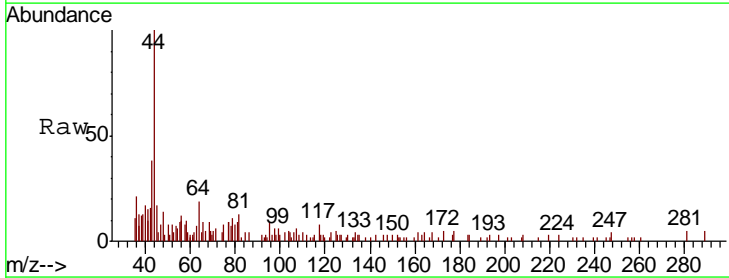
Instrument :
 MSVOA_X
 ClientSampled :
 MW-2

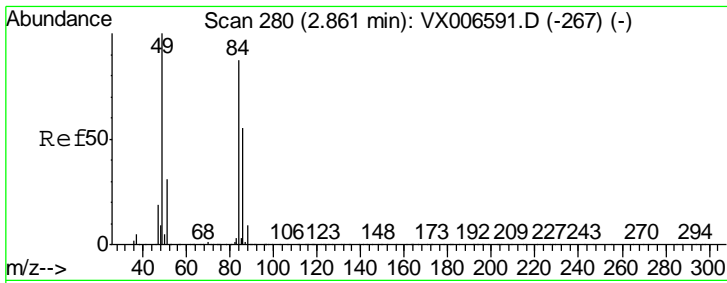
Tgt Ion	Resp	Lower	Upper
53	100		
52	0.0	66.0	99.0#
51	39.3	28.6	42.8



#16
 Acetone
 Concen: 0.594 ug/l
 RT: 2.45 min Scan# 213
 Delta R.T. 0.01 min
 Lab File: VX006767.D
 Acq: 22 Dec 2018 13:03

Tgt Ion	Resp	Lower	Upper
43	100		
58	20.6	25.0	37.6#

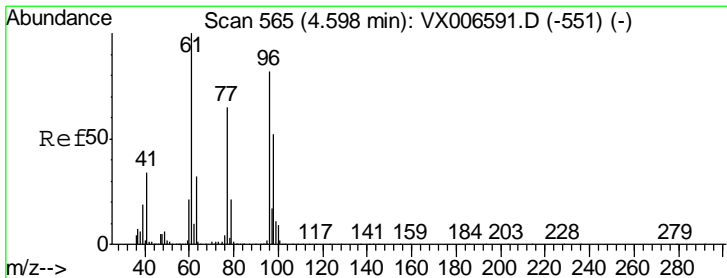
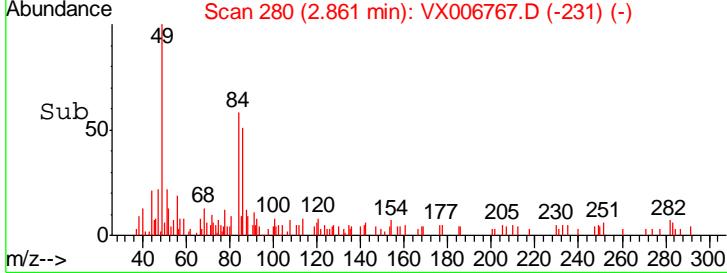
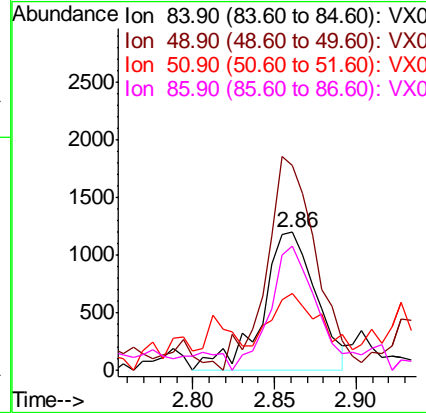
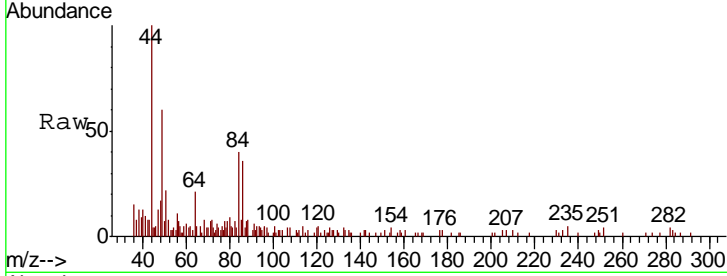




#20
 Methylene Chloride
 Concen: 0.415 ug/l
 RT: 2.86 min Scan# 280
 Delta R.T. 0.00 min
 Lab File: VX006767.D
 Acq: 22 Dec 2018 13:03

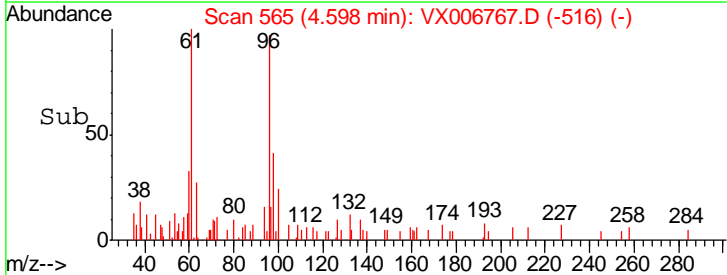
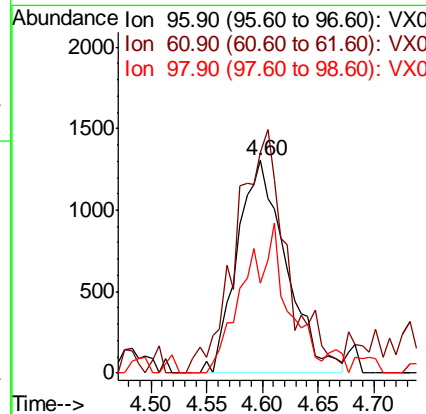
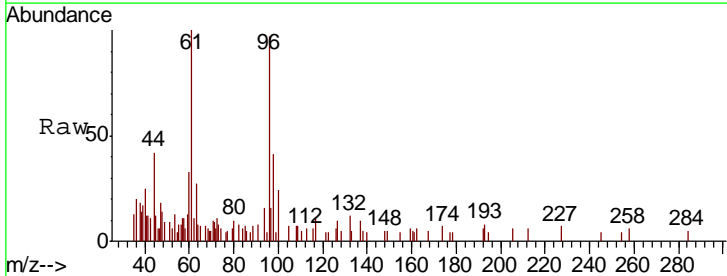
Instrument :
 MSVOA_X
 ClientSampled :
 MW-2

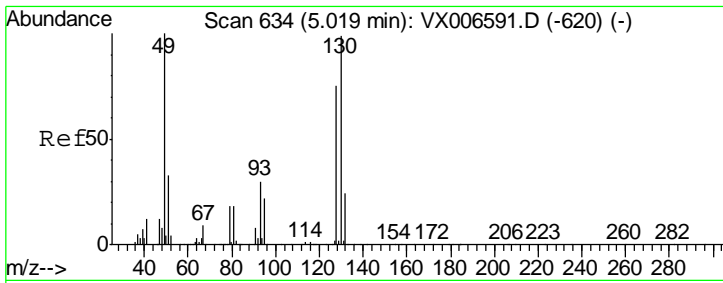
Tgt Ion	Resp	Lower	Upper
84	2745		
49	148.4	91.8	137.6#
51	49.2	28.5	42.7#
86	93.0	50.2	75.2#



#27
 cis-1,2-Dichloroethene
 Concen: 0.565 ug/l
 RT: 4.60 min Scan# 565
 Delta R.T. 0.00 min
 Lab File: VX006767.D
 Acq: 22 Dec 2018 13:03

Tgt Ion	Resp	Lower	Upper
96	3985		
61	118.1	0.0	258.6
98	62.4	0.0	132.0

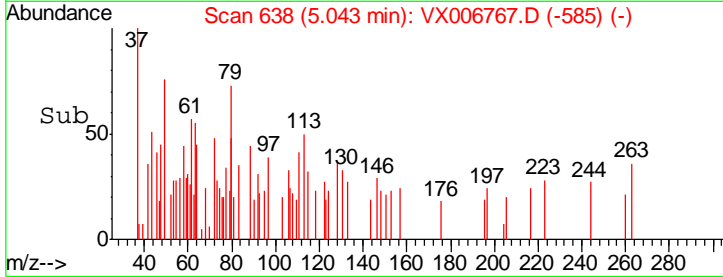
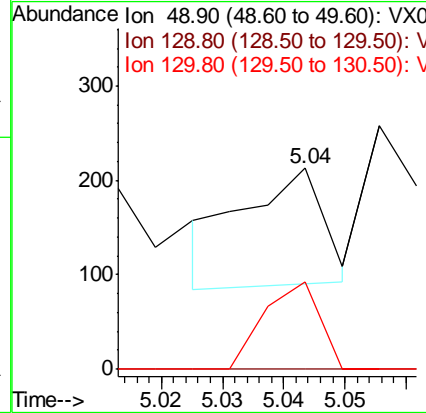
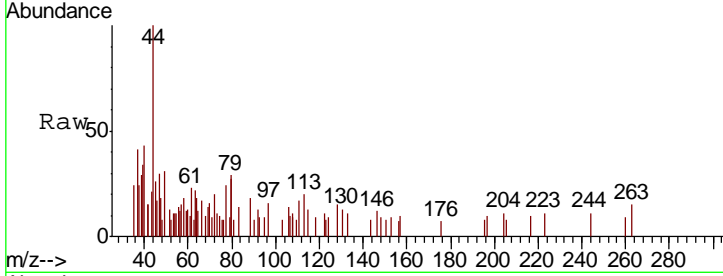




#28
 Bromochloromethane
 Concen: Below Cal
 RT: 5.04 min Scan# 638
 Delta R.T. 0.02 min
 Lab File: VX006767.D
 Acq: 22 Dec 2018 13:03

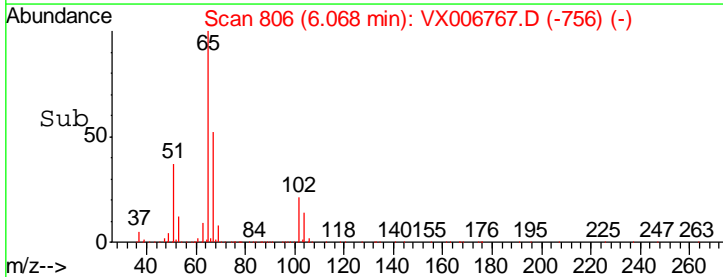
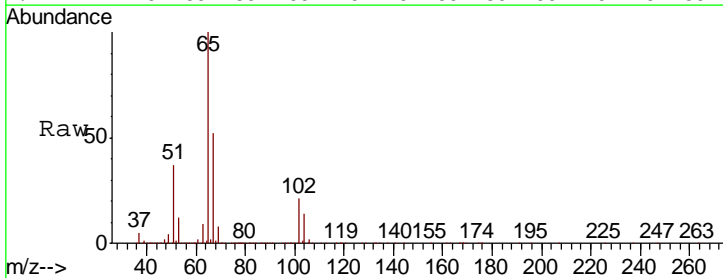
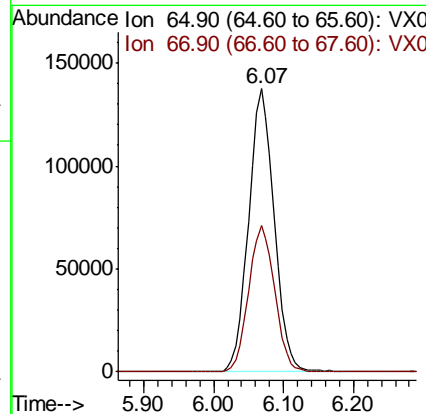
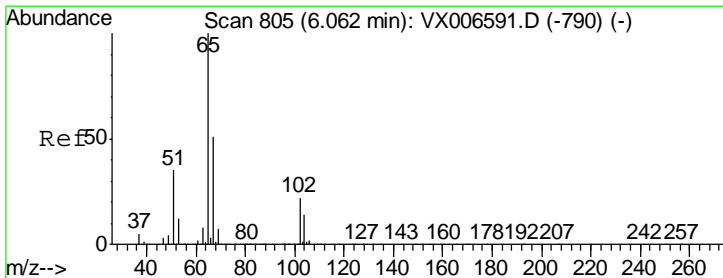
Instrument :
 MSVOA_X
 ClientSampled :
 MW-2

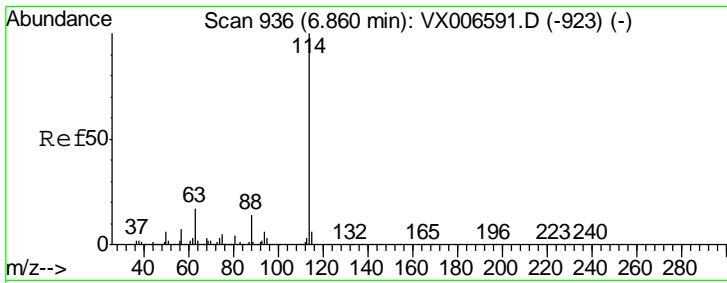
Tgt Ion	Resp	Lower	Upper
49	100		
129	0.0	0.0	5.4
130	51.3	77.7	116.5#



#33
 1,2-Dichloroethane-d4
 Concen: 50.151 ug/l
 RT: 6.07 min Scan# 806
 Delta R.T. 0.01 min
 Lab File: VX006767.D
 Acq: 22 Dec 2018 13:03

Tgt Ion	Resp	Lower	Upper
65	100		
67	52.5	0.0	105.0

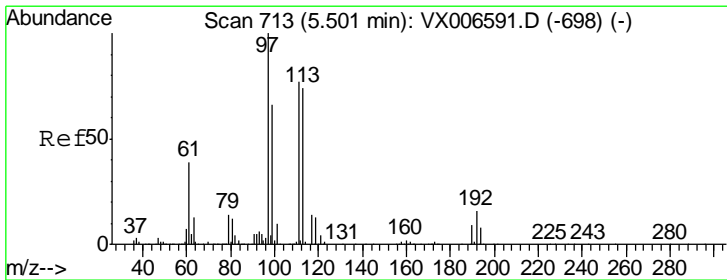
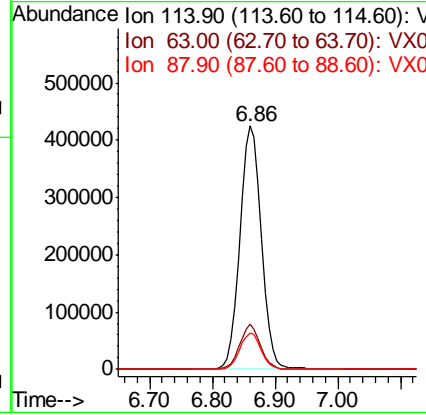
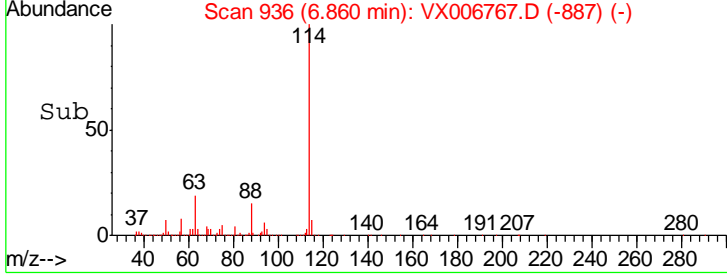
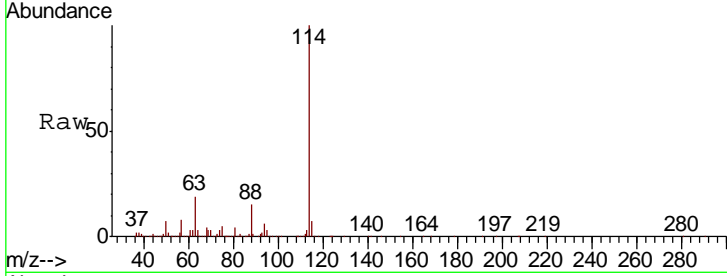




#34
 1,4-Difluorobenzene
 Concen: 50.000 ug/l
 RT: 6.86 min Scan# 936
 Delta R.T. 0.00 min
 Lab File: VX006767.D
 Acq: 22 Dec 2018 13:03

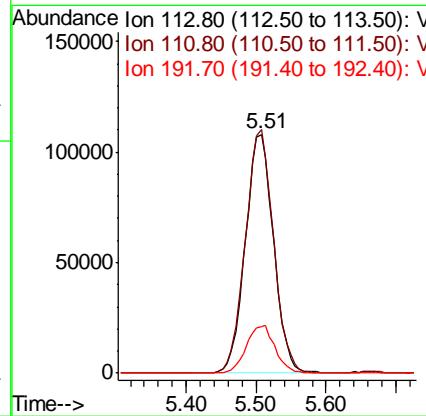
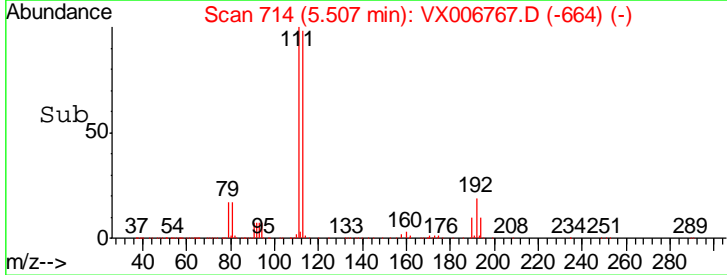
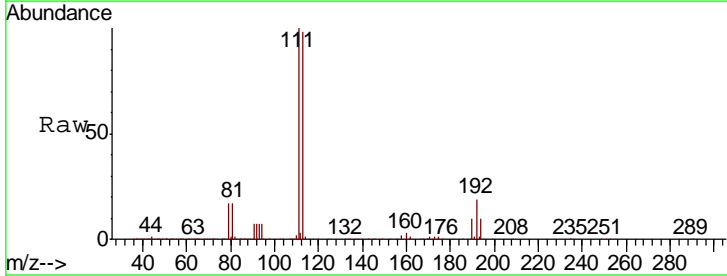
Instrument : MSVOA_X
 ClientSampled : MW-2

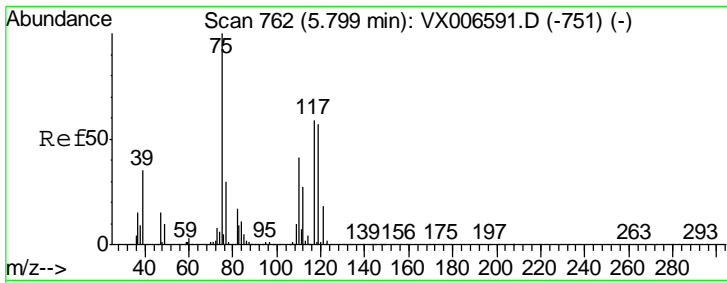
Tgt Ion	Resp	Lower	Upper
114	1004199		
63	18.5	0.0	34.8
88	15.1	0.0	28.8



#35
 Dibromofluoromethane
 Concen: 47.627 ug/l
 RT: 5.51 min Scan# 714
 Delta R.T. 0.01 min
 Lab File: VX006767.D
 Acq: 22 Dec 2018 13:03

Tgt Ion	Resp	Lower	Upper
113	302451		
111	102.0	81.6	122.4
192	20.1	16.7	25.1

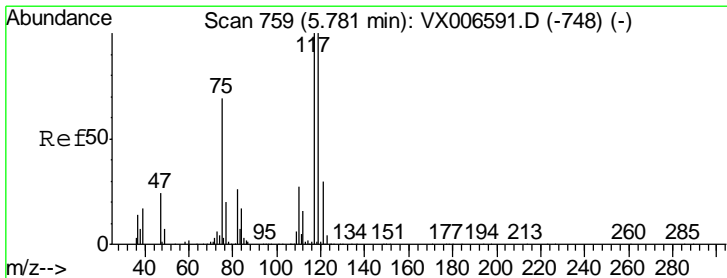
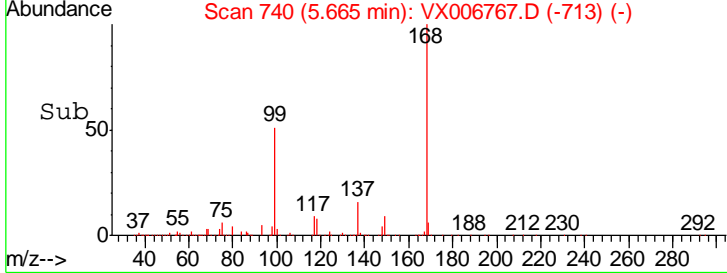
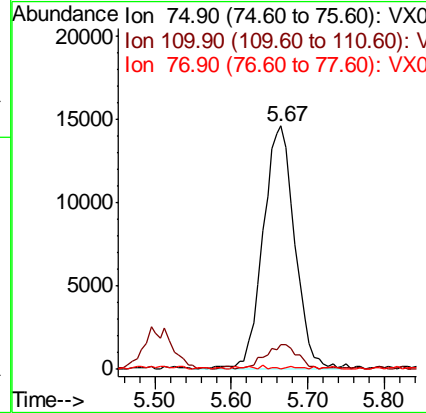
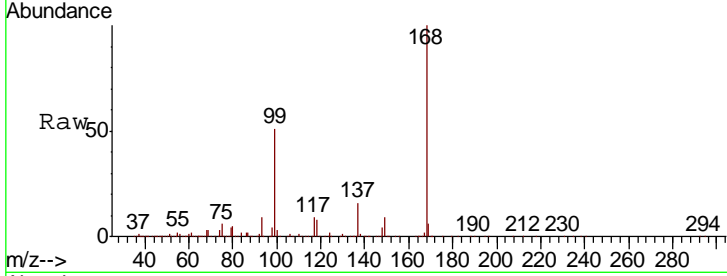




#36
 1,1-Dichloropropene
 Concen: 5.086 ug/l
 RT: 5.67 min Scan# 740
 Delta R.T. -0.13 min
 Lab File: VX006767.D
 Acq: 22 Dec 2018 13:03

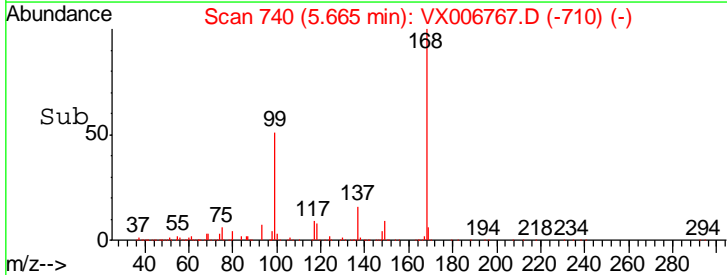
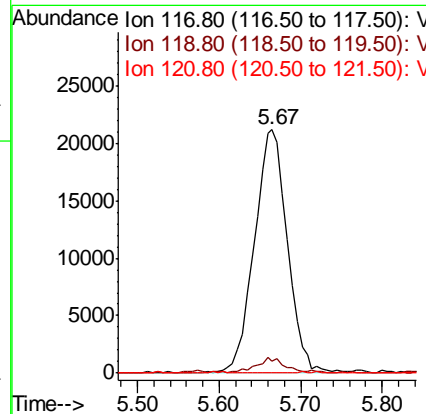
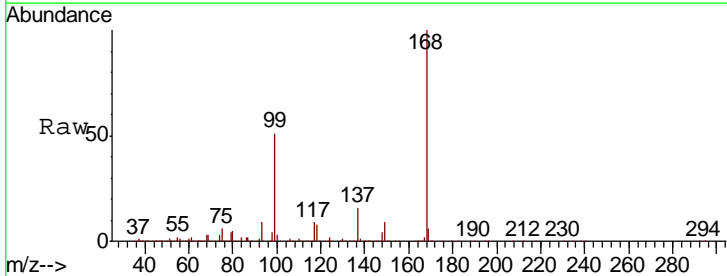
Instrument :
 MSVOA_X
 ClientSampled :
 MW-2

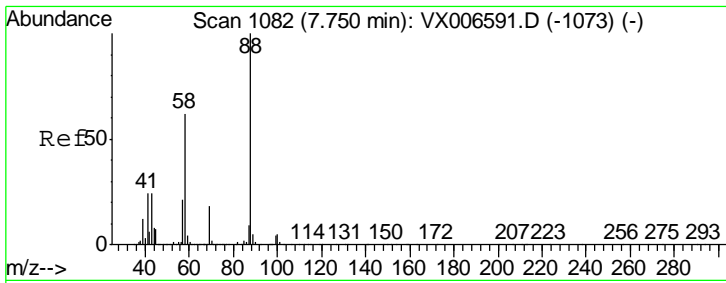
Tgt Ion	Resp	Lower	Upper
75	42299		
75	100		
110	10.4	20.2	60.5#
77	0.1	24.8	37.2#



#38
 Carbon Tetrachloride
 Concen: 7.404 ug/l
 RT: 5.67 min Scan# 740
 Delta R.T. -0.12 min
 Lab File: VX006767.D
 Acq: 22 Dec 2018 13:03

Tgt Ion	Resp	Lower	Upper
117	59844		
117	100		
119	4.2	79.4	119.2#
121	0.0	24.0	36.0#

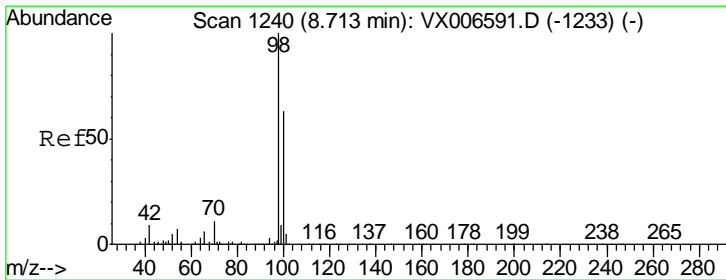
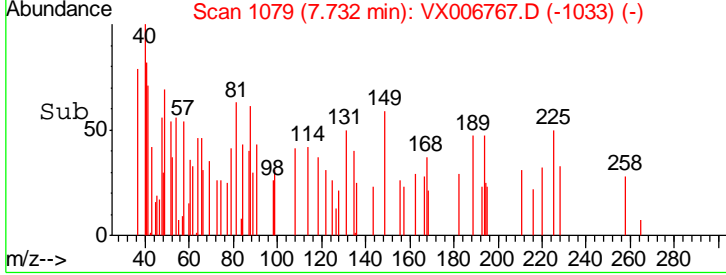
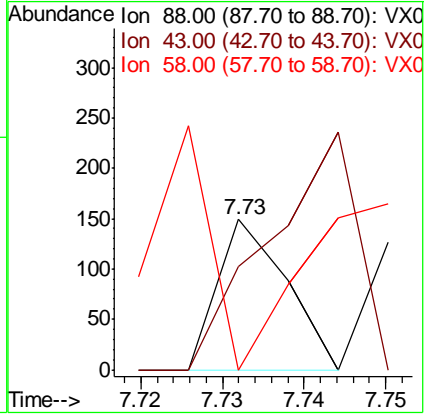
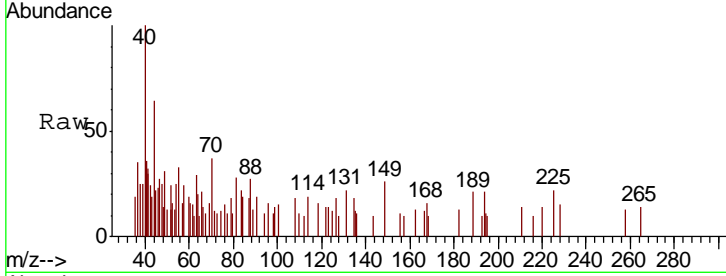




#49
 1,4-Dioxane
 Concen: Below Cal
 RT: 7.73 min Scan# 1079
 Delta R.T. -0.02 min
 Lab File: VX006767.D
 Acq: 22 Dec 2018 13:03

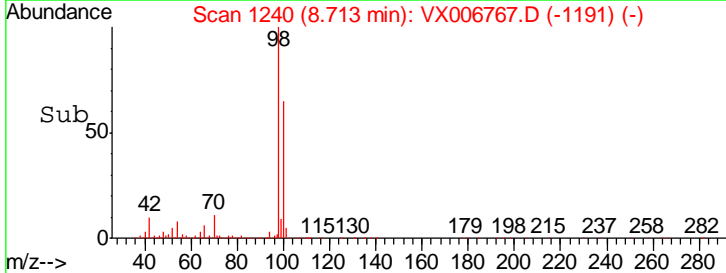
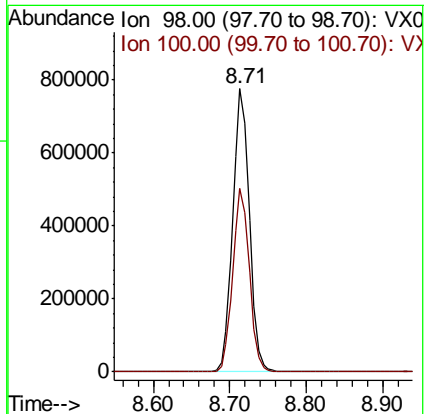
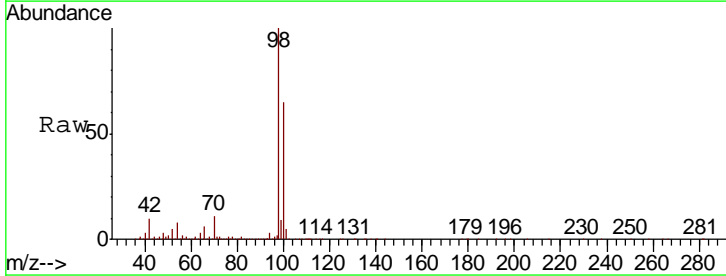
Instrument : MSVOA_X
 ClientSampled : MW-2

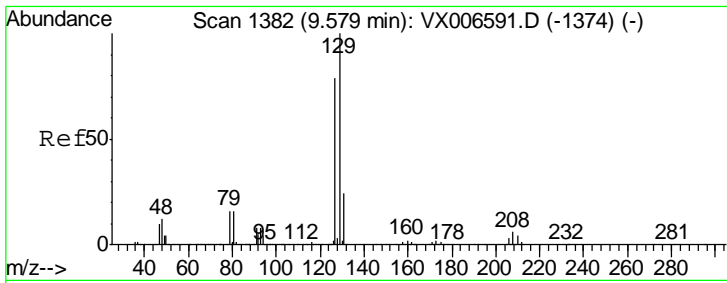
Tgt Ion	Resp	Lower	Upper
88	100		
43	202.3	22.2	33.4#
58	273.6	51.0	76.4#



#50
 Toluene-d8
 Concen: 48.901 ug/l
 RT: 8.71 min Scan# 1240
 Delta R.T. 0.00 min
 Lab File: VX006767.D
 Acq: 22 Dec 2018 13:03

Tgt Ion	Resp	Lower	Upper
98	100		
100	64.8	52.0	78.0

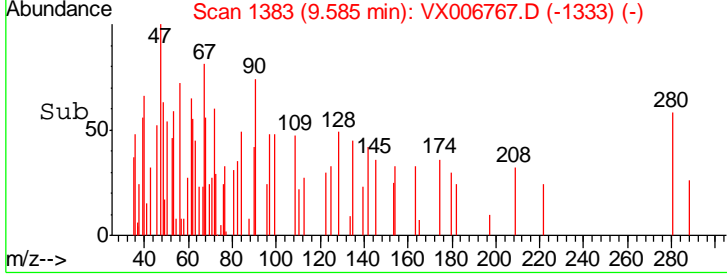
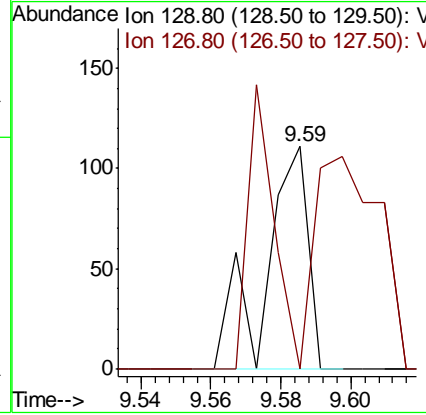
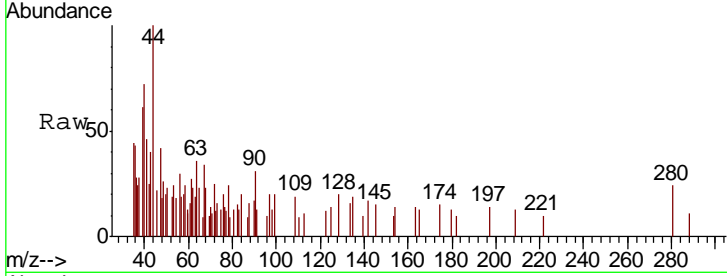




#60
 Dibromochloromethane
 Concen: 2.337 ug/l
 RT: 9.59 min Scan# 1383
 Delta R.T. 0.01 min
 Lab File: VX006767.D
 Acq: 22 Dec 2018 13:03

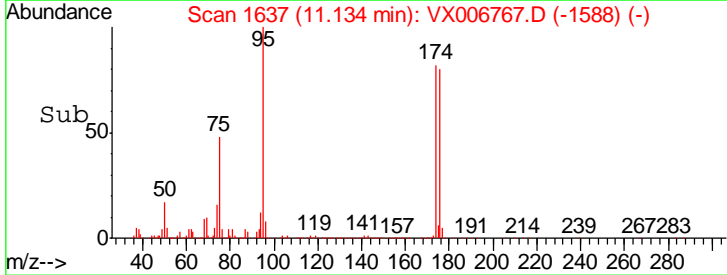
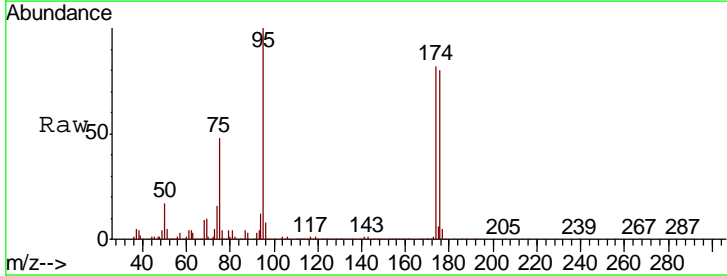
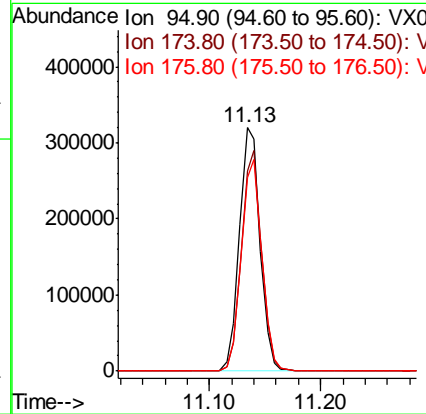
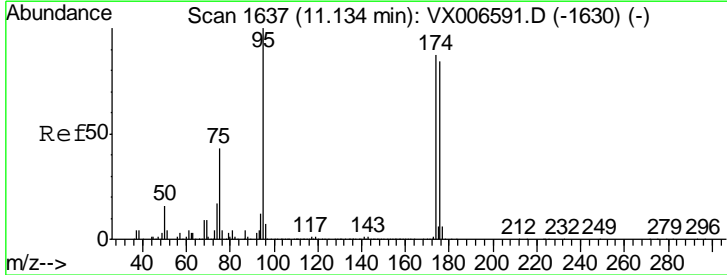
Instrument :
 MSVOA_X
ClientSampled :
 MW-2

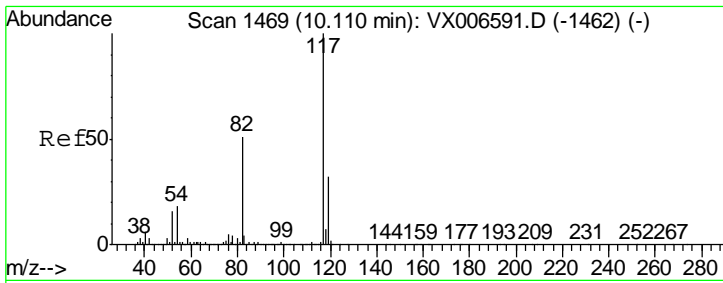
Tgt Ion	Resp	Lower	Upper
129	100		
127	77.7	39.3	117.8



#62
 4-Bromofluorobenzene
 Concen: 46.838 ug/l
 RT: 11.13 min Scan# 1637
 Delta R.T. 0.00 min
 Lab File: VX006767.D
 Acq: 22 Dec 2018 13:03

Tgt Ion	Resp	Lower	Upper
95	100		
174	88.5	0.0	182.2
176	86.3	0.0	178.8

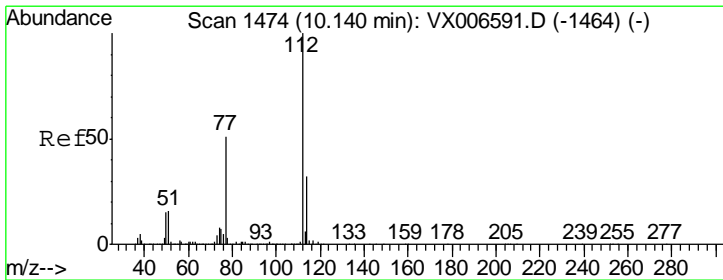
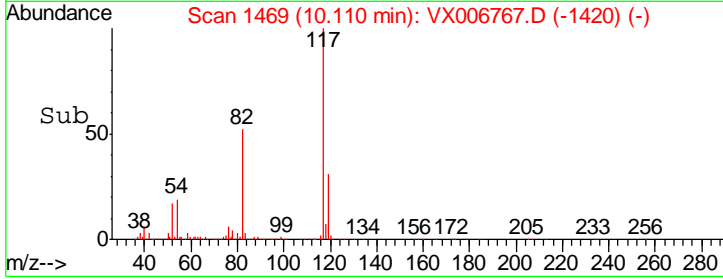
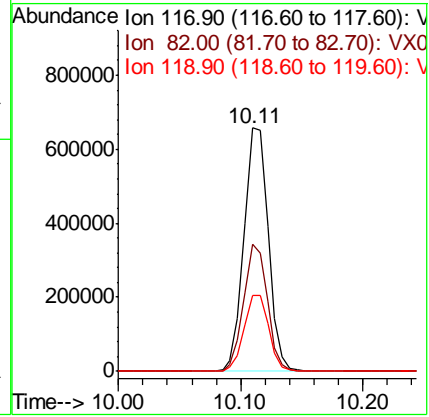
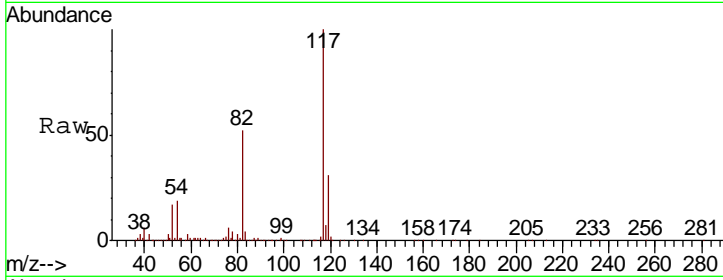




#63
 Chlorobenzene-d5
 Concen: 50.000 ug/l
 RT: 10.11 min Scan# 1469
 Delta R.T. 0.00 min
 Lab File: VX006767.D
 Acq: 22 Dec 2018 13:03

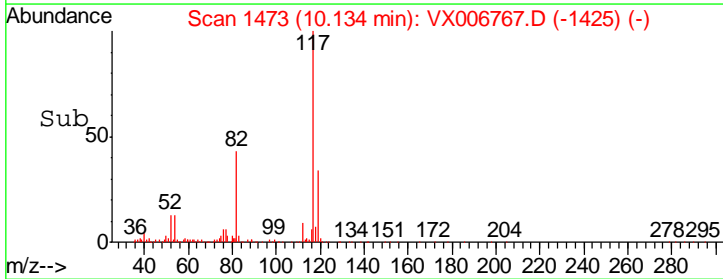
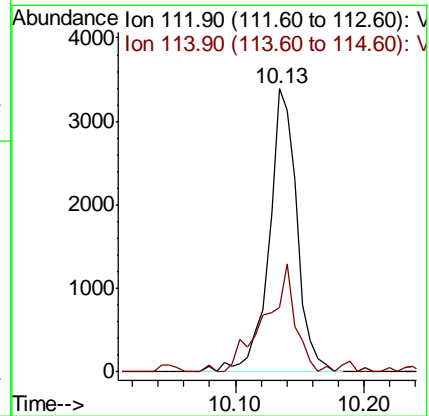
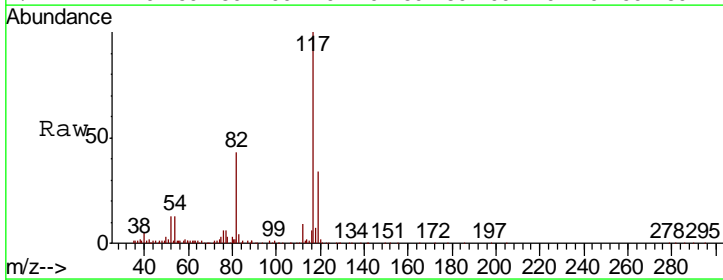
Instrument : MSVOA_X
 ClientSampled : MW-2

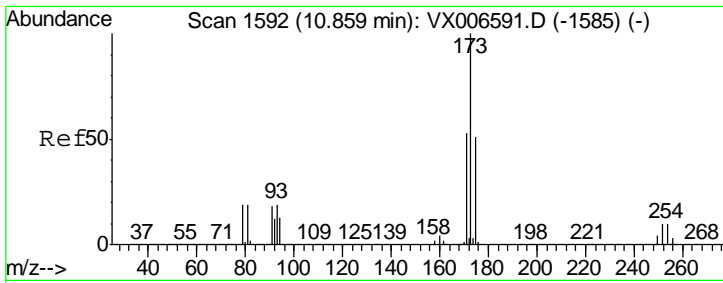
Tgt Ion	Resp	Lower	Upper
117	908612		
82	52.2	41.0	61.6
119	31.4	25.4	38.0



#65
 Chlorobenzene
 Concen: 0.265 ug/l
 RT: 10.13 min Scan# 1473
 Delta R.T. -0.01 min
 Lab File: VX006767.D
 Acq: 22 Dec 2018 13:03

Tgt Ion	Resp	Lower	Upper
112	5091		
114	22.6	25.7	38.5#

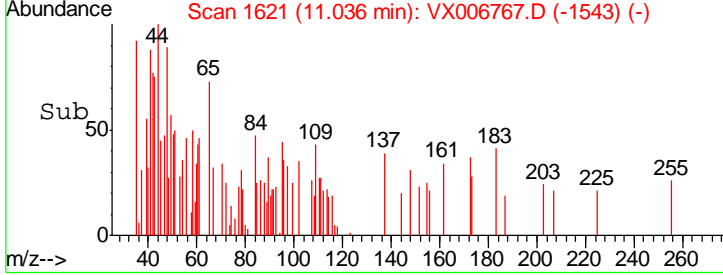
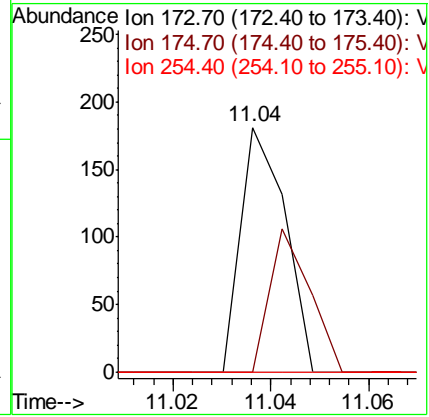
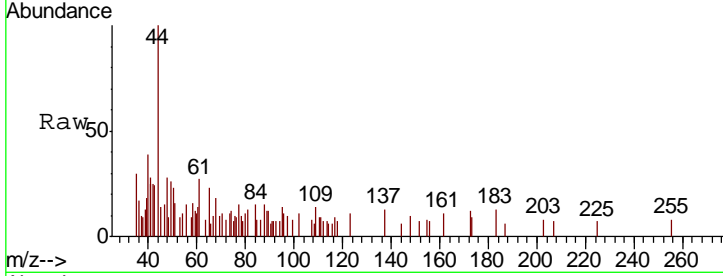




#71
 Bromoform
 Concen: 4.479 ug/l
 RT: 11.04 min Scan# 1621
 Delta R.T. 0.18 min
 Lab File: VX006767.D
 Acq: 22 Dec 2018 13:03

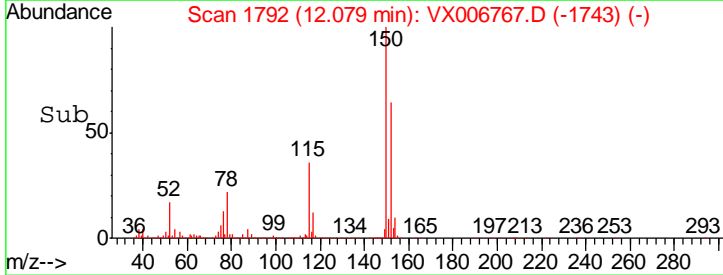
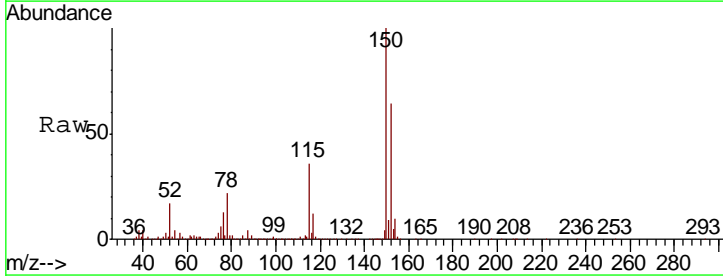
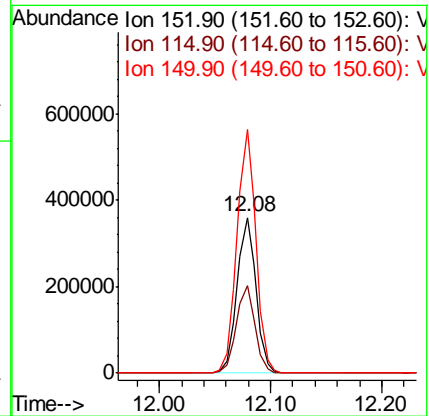
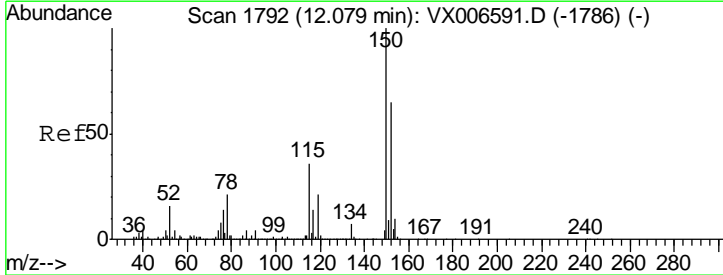
Instrument : MSVOA_X
 ClientSampled : MW-2

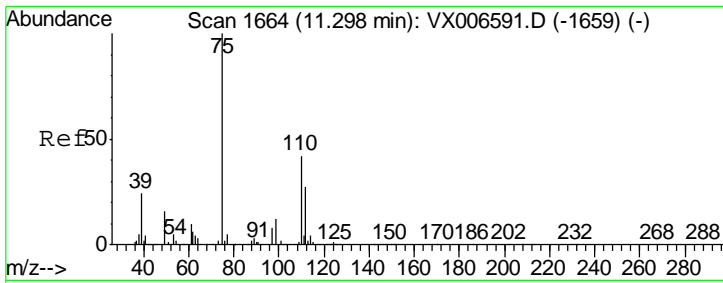
Tgt Ion	Resp	Lower	Upper
173	114		
175	0.0	24.7	74.1#
254	0.0	0.2	0.2#



#72
 1,4-Dichlorobenzene-d4
 Concen: 50.000 ug/l
 RT: 12.08 min Scan# 1792
 Delta R.T. 0.00 min
 Lab File: VX006767.D
 Acq: 22 Dec 2018 13:03

Tgt Ion	Resp	Lower	Upper
152	422883		
152	100		
115	55.4	39.1	117.2
150	156.8	0.0	344.8

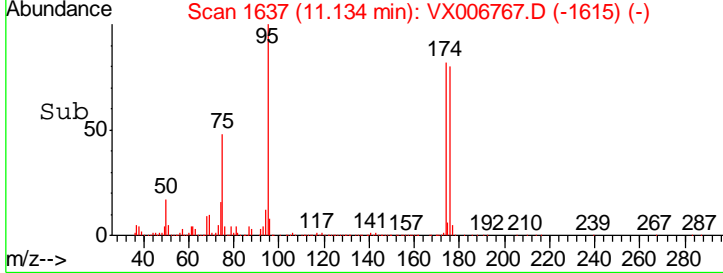
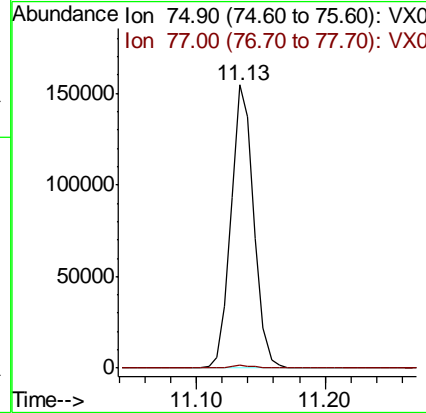
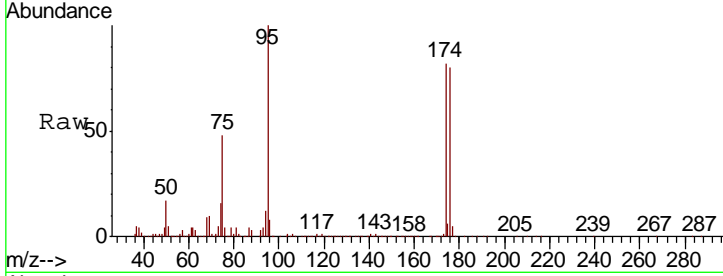




#76
 1,2,3-Trichloropropane
 Concen: 24.454 ug/l
 RT: 11.13 min Scan# 1637
 Delta R.T. -0.16 min
 Lab File: VX006767.D
 Acq: 22 Dec 2018 13:03

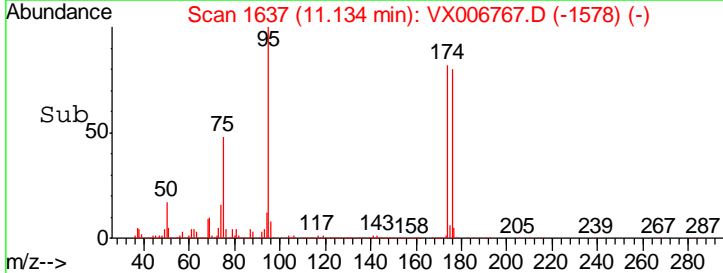
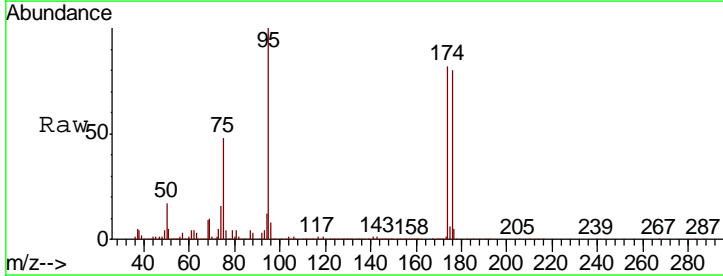
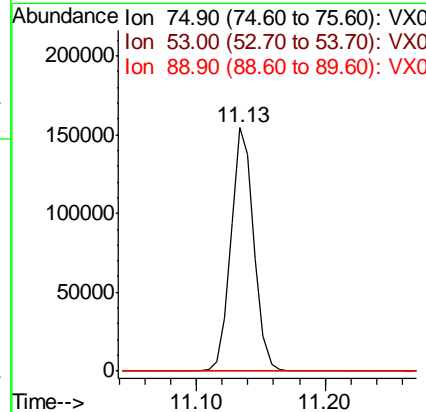
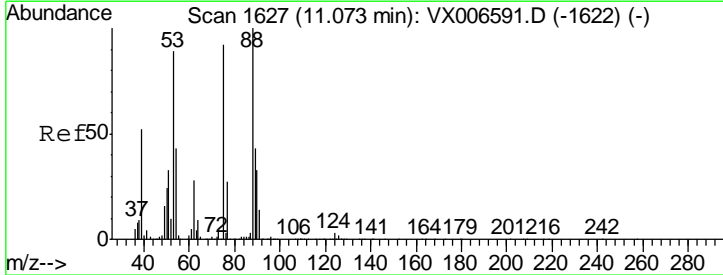
Instrument : MSVOA_X
 Client Sampled : MW-2

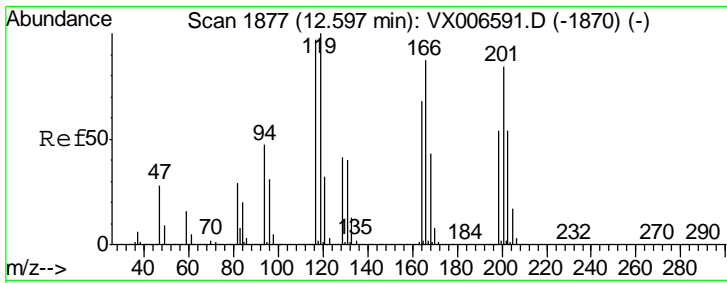
Tgt Ion	Resp	Lower	Upper
75	100		
77	1.2	18.5	55.5#



#81
 trans-1,4-Dichloro-2-butene
 Concen: 72.353 ug/l
 RT: 11.13 min Scan# 1637
 Delta R.T. 0.06 min
 Lab File: VX006767.D
 Acq: 22 Dec 2018 13:03

Tgt Ion	Resp	Lower	Upper
75	100		
53	0.2	79.7	119.5#
89	0.0	38.0	57.0#





#90
 Hexachloroethane
 Concen: 3.301 ug/l
 RT: 12.61 min Scan# 1879
 Delta R.T. 0.01 min
 Lab File: VX006767.D
 Acq: 22 Dec 2018 13:03

Instrument :
 MSVOA_X
 ClientSampleId :
 MW-2

Tot Ion:117 Resp: 32
 Ion Ratio Lower Upper
 117 100
 201 0.0 42.9 128.7#

