

Data Path : Z:\VOASRV\HPCHEM1\MSVOA X\DATA\VX122218\
 Data File : VX006769.D
 Acq On : 22 Dec 2018 13:56
 Operator : JC/MD
 Sample : J6519-07DL 40X
 Misc : 5.0mL/MSVOA X/WATER
 ALS Vial : 9 Sample Multiplier: 1

Instrument :
 MSVOA_X
ClientSampled :
 T11-MW-4-9.0-122018DL

Quant Time: Dec 24 04:24:20 2018
 Quant Method : Z:\VOASRV\HPCHEM1\MSVOA_X\METHOD\82X121818W.M
 Quant Title : SW846 8260
 QLast Update : Wed Dec 19 15:20:58 2018
 Response via : Initial Calibration

Internal Standards	R.T.	QIon	Response	Conc	Units	Dev(Min)
1) Pentafluorobenzene	5.67	168	634858	50.00	ug/l	0.00
34) 1,4-Difluorobenzene	6.86	114	991174	50.00	ug/l	0.00
63) Chlorobenzene-d5	10.11	117	898196	50.00	ug/l	0.00
72) 1,4-Dichlorobenzene-d4	12.08	152	422501	50.00	ug/l	0.00

System Monitoring Compounds

33) 1,2-Dichloroethane-d4	6.07	65	337883	49.38	ug/l	0.00
Spiked Amount	50.000		Recovery	=	98.76%	
35) Dibromofluoromethane	5.50	113	293333	46.80	ug/l	0.00
Spiked Amount	50.000		Recovery	=	93.60%	
50) Toluene-d8	8.71	98	1160116	49.09	ug/l	0.00
Spiked Amount	50.000		Recovery	=	98.18%	
62) 4-Bromofluorobenzene	11.13	95	404663	46.76	ug/l	0.00
Spiked Amount	50.000		Recovery	=	93.52%	

Target Compounds

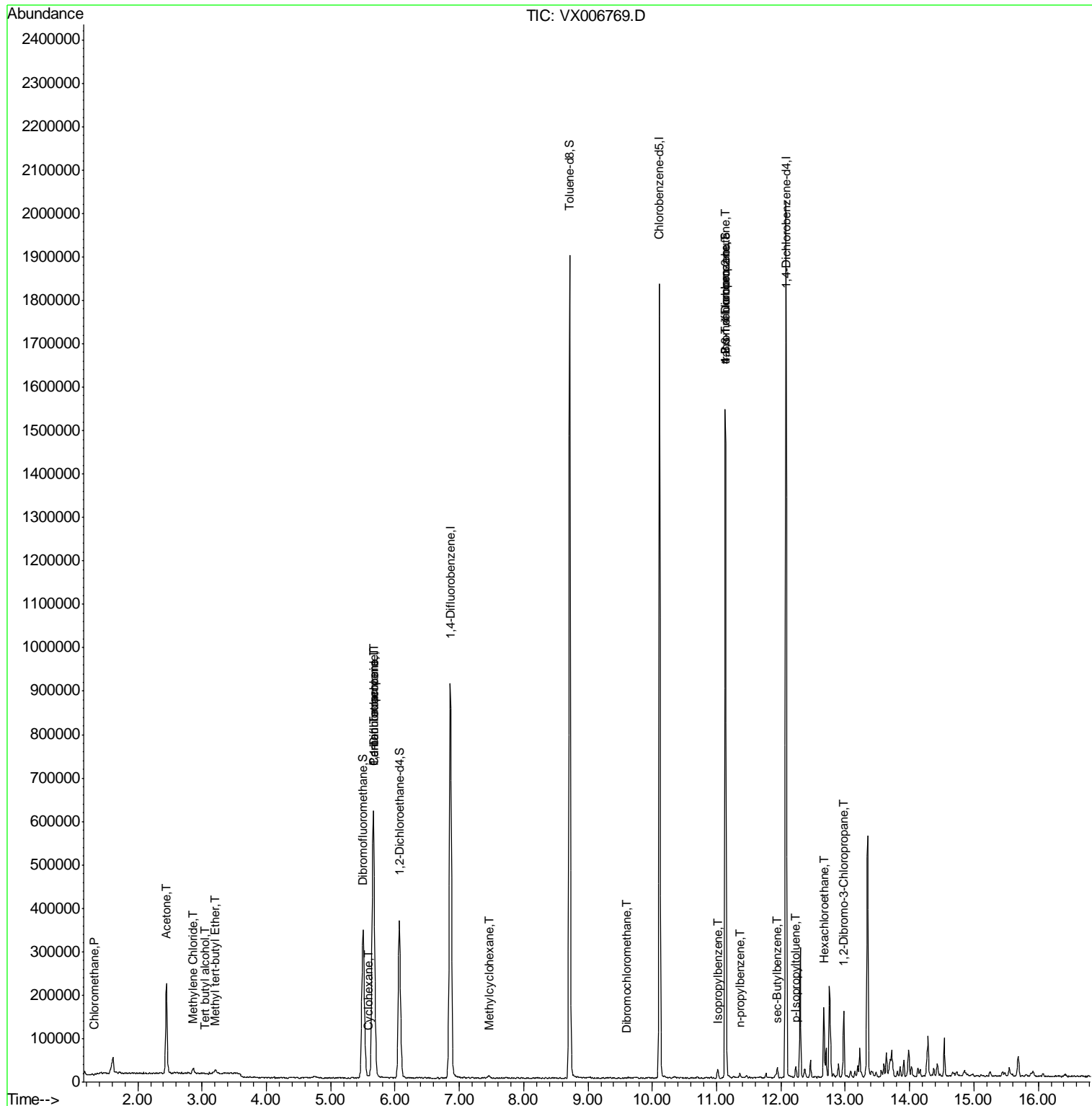
					Qvalue
3) Chloromethane	1.33	50	1728	0.276	ug/l 97
5) Bromomethane	1.64	94	688	Below Cal	# 37
11) Tert butyl alcohol	3.05	59	1398	0.916	ug/l # 77
16) Acetone	2.45	43	218453	69.493	ug/l 98
19) Methyl tert-butyl Ether	3.20	73	10144	0.539	ug/l # 86
20) Methylene Chloride	2.86	84	6184	0.951	ug/l 87
28) Bromochloromethane	5.04	49	283	Below Cal	# 17
31) Cyclohexane	5.59	56	2050	0.216	ug/l # 73
36) 1,1-Dichloropropene	5.67	75	43375	5.284	ug/l # 48
38) Carbon Tetrachloride	5.67	117	58633	7.349	ug/l # 16
39) Methylcyclohexane	7.46	83	2862	0.265	ug/l # 87
49) 1,4-Dioxane	7.72	88	142	Below Cal	# 8
60) Dibromochloromethane	9.60	129	20	2.327	ug/l # 1
73) Isopropylbenzene	11.02	105	10103	0.350	ug/l 95
76) 1,2,3-Trichloropropane	11.13	75	194556	24.778	ug/l # 40
78) n-propylbenzene	11.36	91	6820	0.214	ug/l 87
81) trans-1,4-Dichloro-2-buten	11.13	75	194556	73.257	ug/l # 10
85) sec-Butylbenzene	11.94	105	10371	0.355	ug/l # 75
86) p-Isopropyltoluene	12.23	119	9577	0.373	ug/l 92
90) Hexachloroethane	12.66	117	7659	5.073	ug/l # 6
92) 1,2-Dibromo-3-Chloropropan	12.98	75	674	0.379	ug/l # 1

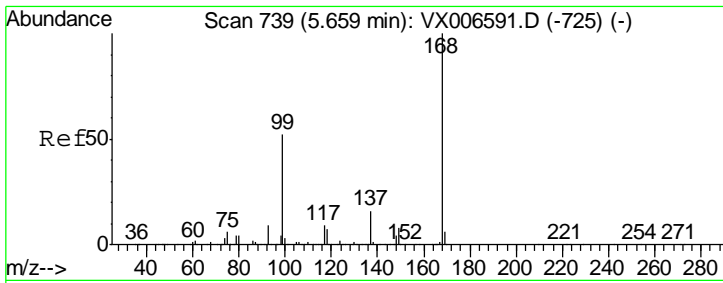
(#) = qualifier out of range (m) = manual integration (+) = signals summed

Data Path : Z:\VOASRV\HPCHEM1\MSVOA X\DATA\VX122218\
 Data File : VX006769.D
 Acq On : 22 Dec 2018 13:56
 Operator : JC/MD
 Sample : J6519-07DL 40X
 Misc : 5.0mL/MSVOA X/WATER
 ALS Vial : 9 Sample Multiplier: 1

Instrument :
 MSVOA_X
 Client Sampled :
 T11-MW-4-9.0-122018DL

Quant Time: Dec 24 04:24:20 2018
 Quant Method : Z:\VOASRV\HPCHEM1\MSVOA_X\METHOD\82X121818W.M
 Quant Title : SW846 8260
 QLast Update : Wed Dec 19 15:20:58 2018
 Response via : Initial Calibration

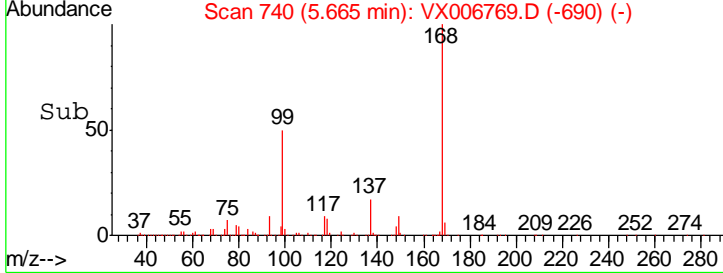
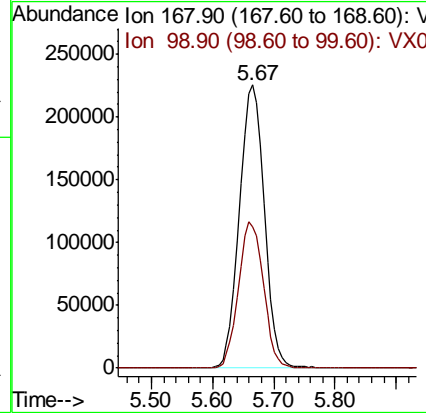
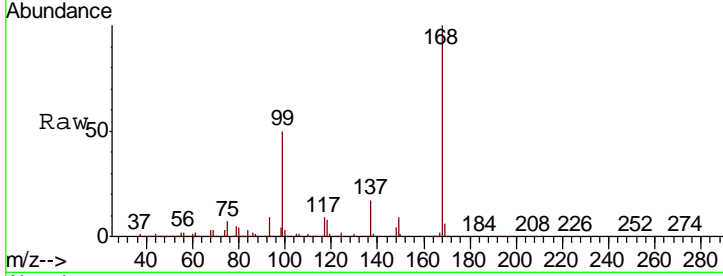




#1
 Pentafluorobenzene
 Concen: 50.000 ug/l
 RT: 5.67 min Scan# 740
 Delta R.T. 0.01 min
 Lab File: VX006769.D
 Acq: 22 Dec 2018 13:56

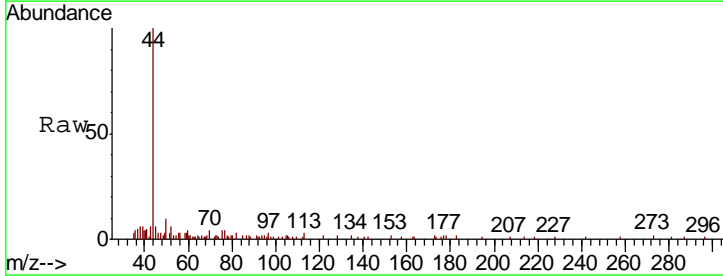
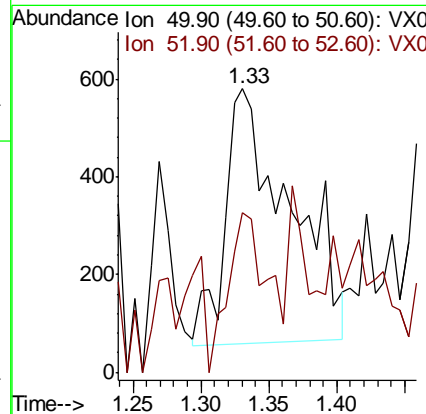
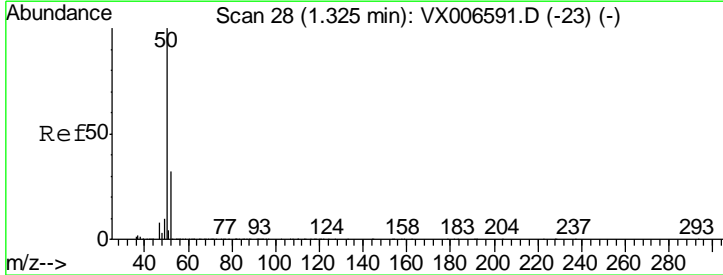
Instrument :
 MSVOA_X
 ClientSampleID :
 T11-MW-4-9.0-122018DL

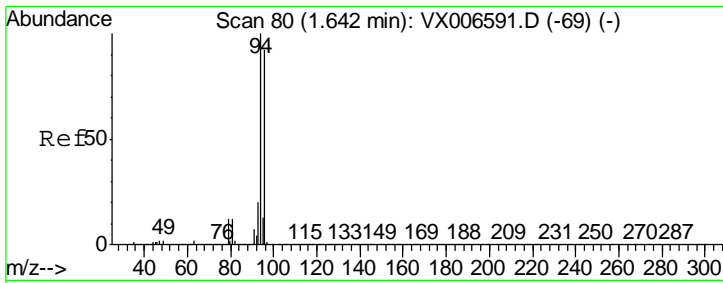
Tgt Ion	Resp	Lower	Upper
168	100		
99	49.9	41.8	62.8



#3
 Chloromethane
 Concen: 0.276 ug/l
 RT: 1.33 min Scan# 29
 Delta R.T. 0.01 min
 Lab File: VX006769.D
 Acq: 22 Dec 2018 13:56

Tgt Ion	Resp	Lower	Upper
50	100		
52	30.0	25.4	38.2

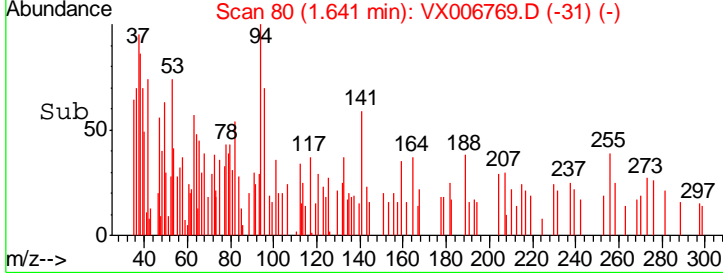
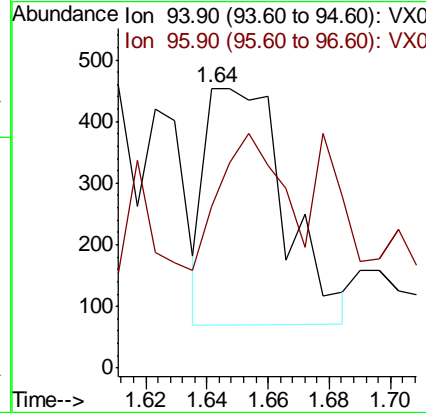
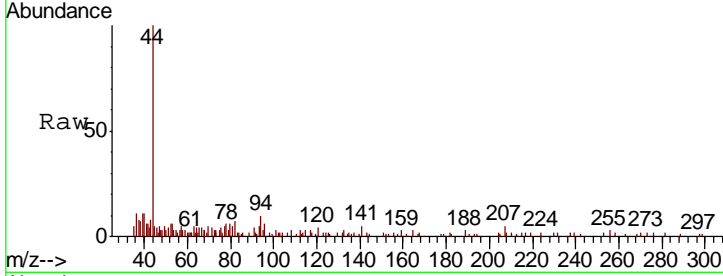




#5
 Bromomethane
 Concen: Below Cal
 RT: 1.64 min Scan# 80
 Delta R.T. 0.00 min
 Lab File: VX006769.D
 Acq: 22 Dec 2018 13:56

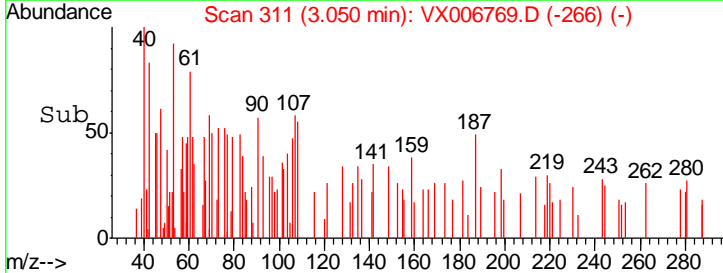
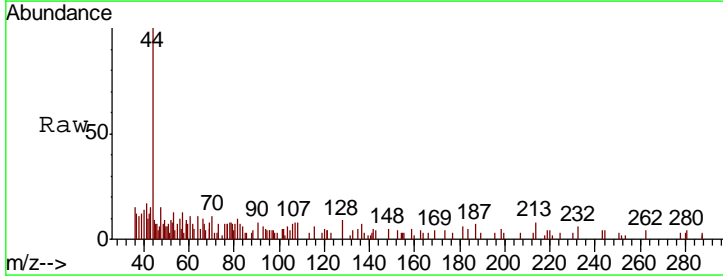
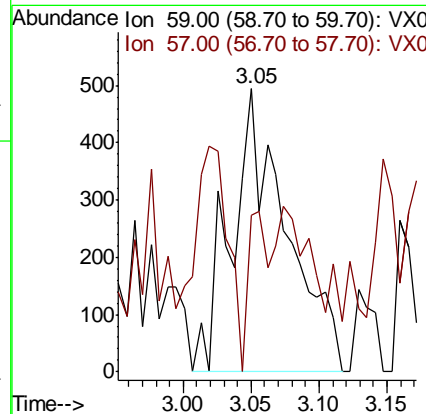
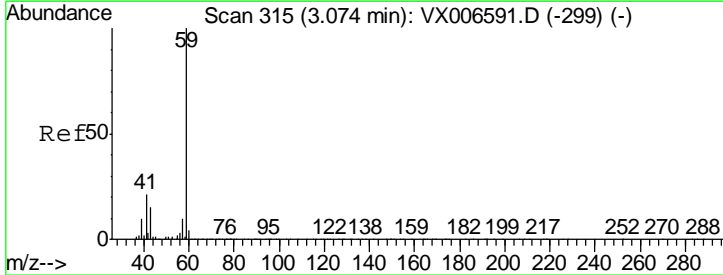
Instrument :
 MSVOA_X
 ClientSampled :
 T11-MW-4-9.0-122018DL

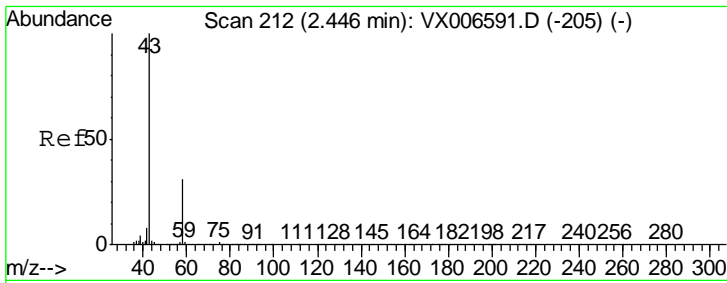
Tgt Ion: 94 Resp: 688
 Ion Ratio Lower Upper
 94 100
 96 31.5 73.4 110.2#



#11
 Tert butyl alcohol
 Concen: 0.916 ug/l
 RT: 3.05 min Scan# 311
 Delta R.T. -0.02 min
 Lab File: VX006769.D
 Acq: 22 Dec 2018 13:56

Tgt Ion: 59 Resp: 1398
 Ion Ratio Lower Upper
 59 100
 57 19.2 8.5 12.7#

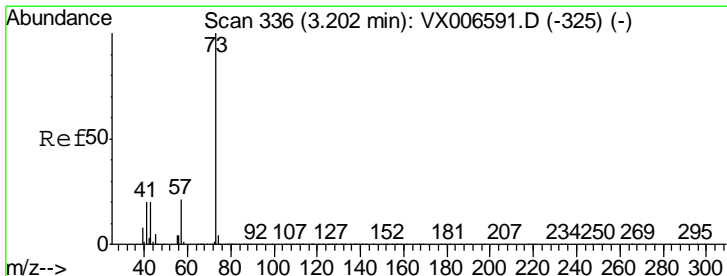
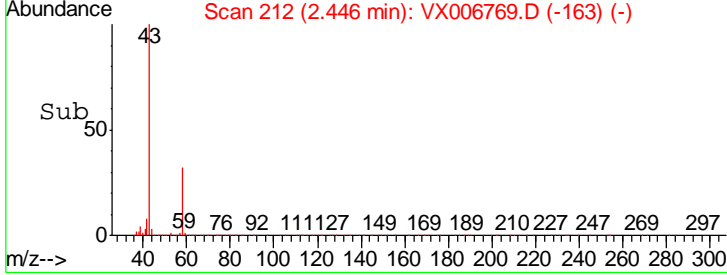
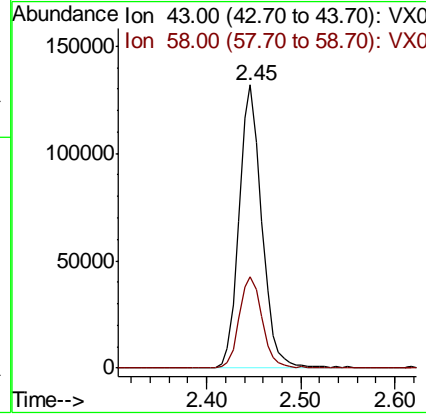
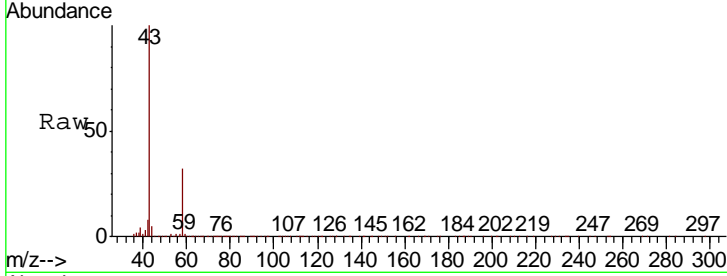




#16
 Acetone
 Concen: 69.493 ug/l
 RT: 2.45 min Scan# 212
 Delta R.T. -0.00 min
 Lab File: VX006769.D
 Acq: 22 Dec 2018 13:56

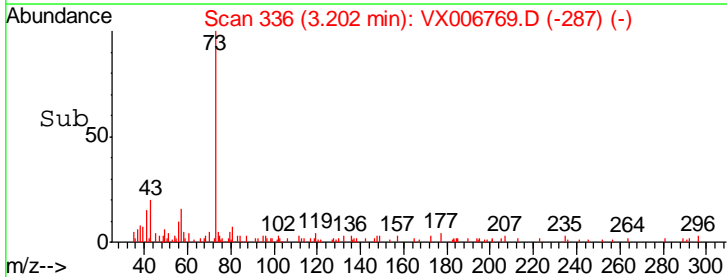
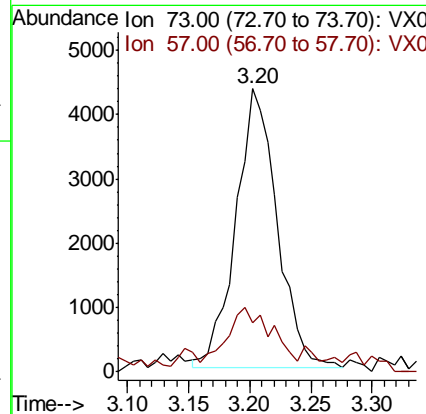
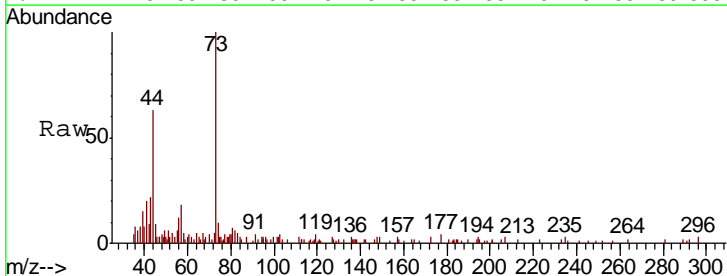
Instrument :
 MSVOA_X
ClientSampled :
 T11-MW-4-9.0-122018DL

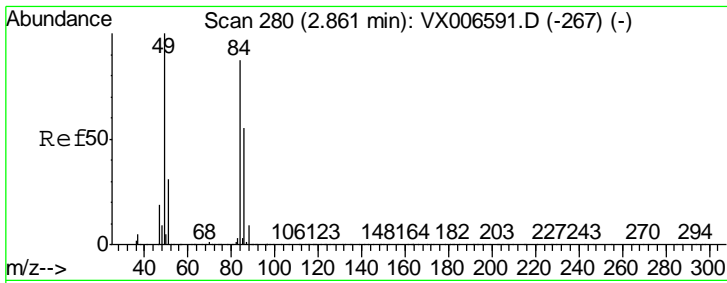
Tgt Ion: 43 Resp: 218453
 Ion Ratio Lower Upper
 43 100
 58 32.2 25.0 37.6



#19
 Methyl tert-butyl Ether
 Concen: 0.539 ug/l
 RT: 3.20 min Scan# 336
 Delta R.T. -0.00 min
 Lab File: VX006769.D
 Acq: 22 Dec 2018 13:56

Tgt Ion: 73 Resp: 10144
 Ion Ratio Lower Upper
 73 100
 57 14.7 16.8 25.2#

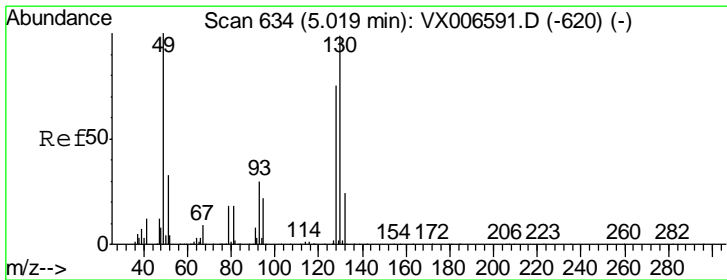
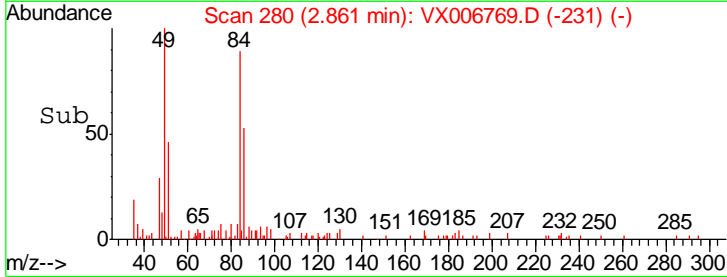
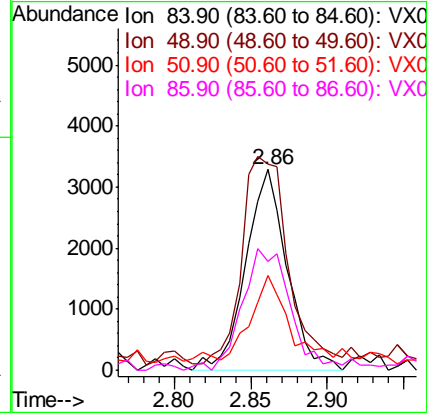
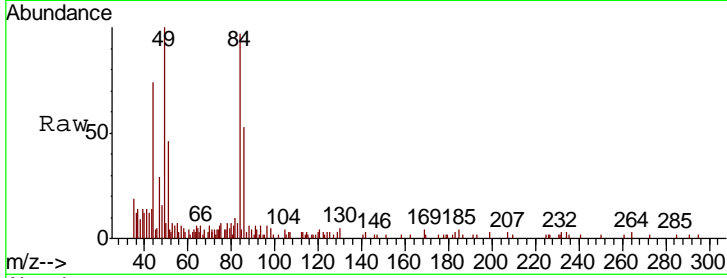




#20
 Methylene Chloride
 Concen: 0.951 ug/l
 RT: 2.86 min Scan# 280
 Delta R.T. -0.00 min
 Lab File: VX006769.D
 Acq: 22 Dec 2018 13:56

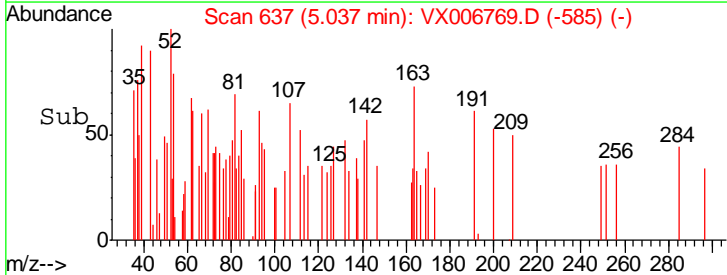
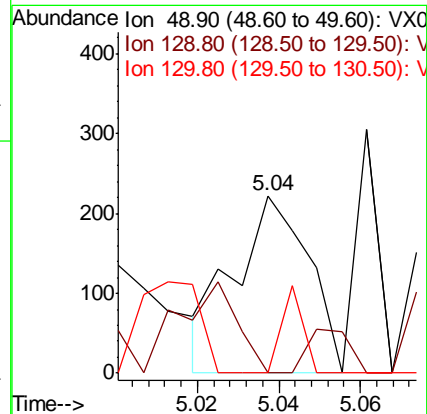
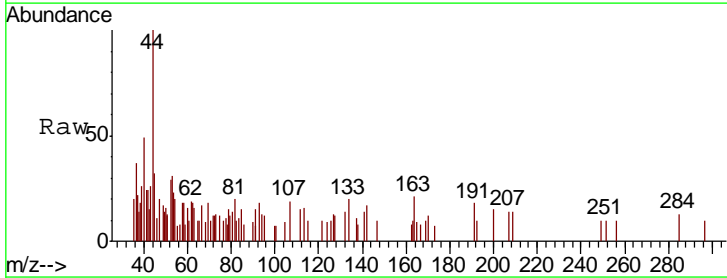
Instrument :
 MSVOA_X
 ClientSampleID :
 T11-MW-4-9.0-122018DL

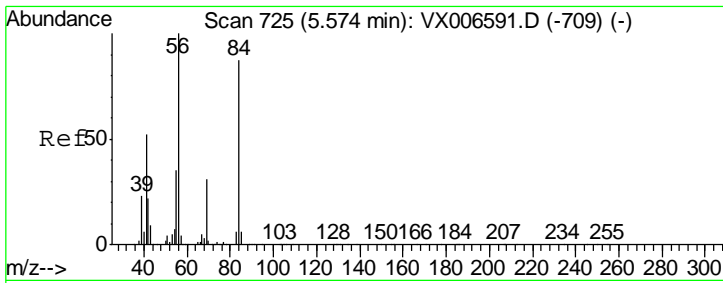
Tgt Ion	Resp	Lower	Upper
84	100		
49	99.7	91.8	137.6
51	41.7	28.5	42.7
86	52.4	50.2	75.2



#28
 Bromochloromethane
 Concen: Below Cal
 RT: 5.04 min Scan# 637
 Delta R.T. 0.02 min
 Lab File: VX006769.D
 Acq: 22 Dec 2018 13:56

Tgt Ion	Resp	Lower	Upper
49	100		
129	13.8	0.0	5.4#
130	14.1	77.7	116.5#

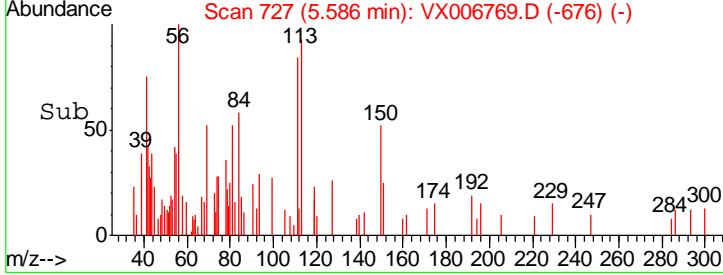
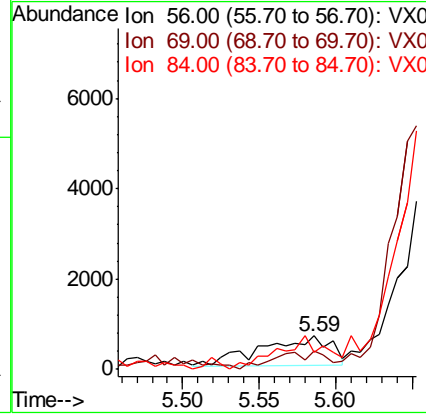
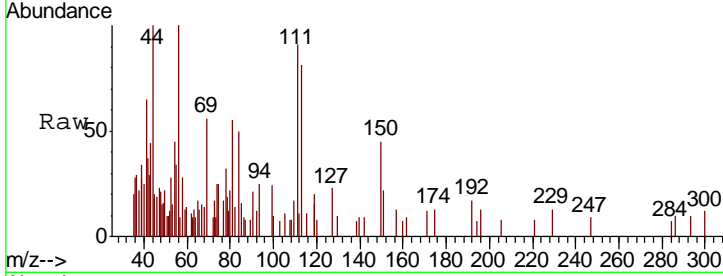




#31
 Cyclohexane
 Concen: 0.216 ug/l
 RT: 5.59 min Scan# 727
 Delta R.T. 0.01 min
 Lab File: VX006769.D
 Acq: 22 Dec 2018 13:56

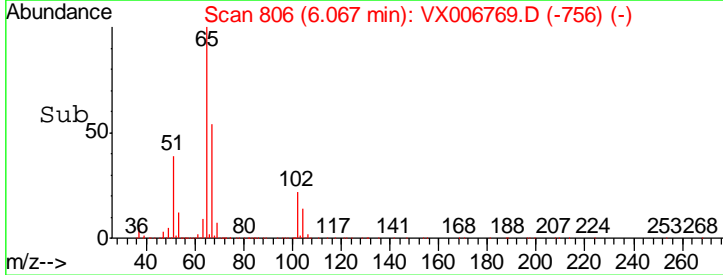
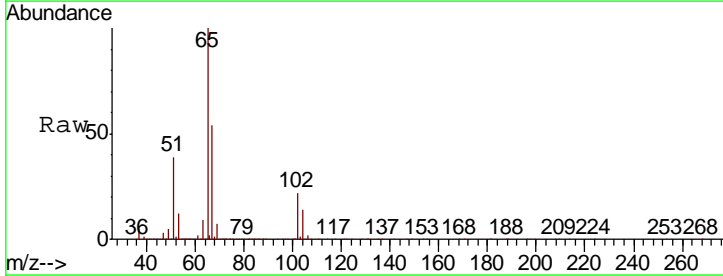
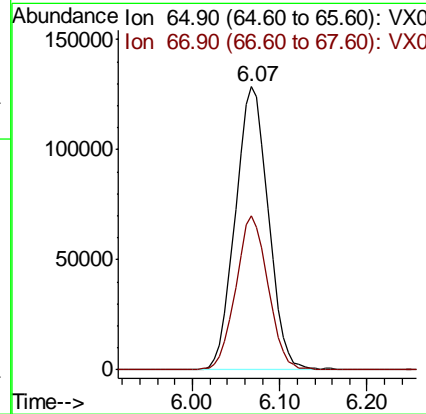
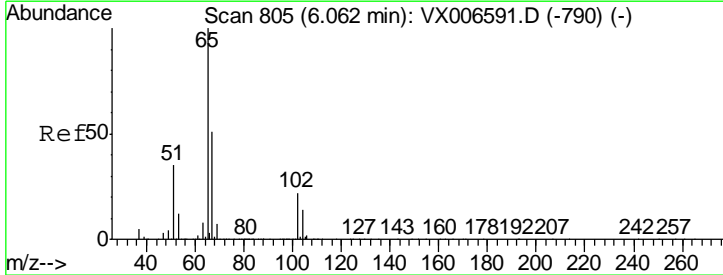
Instrument :
 MSVOA_X
ClientSampled :
 T11-MW-4-9.0-122018DL

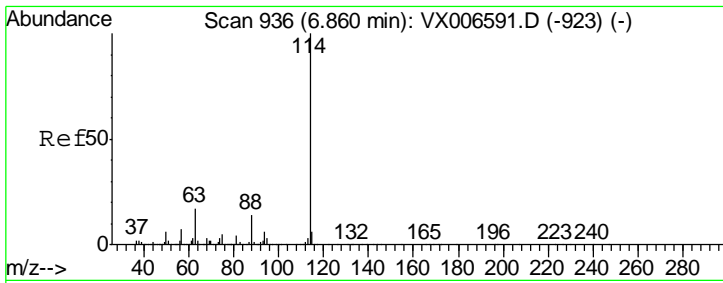
Tgt Ion	Resp	Lower	Upper
56	100		
69	36.3	24.4	36.6
84	56.9	70.0	105.0#



#33
 1,2-Dichloroethane-d4
 Concen: 49.382 ug/l
 RT: 6.07 min Scan# 806
 Delta R.T. 0.01 min
 Lab File: VX006769.D
 Acq: 22 Dec 2018 13:56

Tgt Ion	Resp	Lower	Upper
65	100		
67	53.0	0.0	105.0

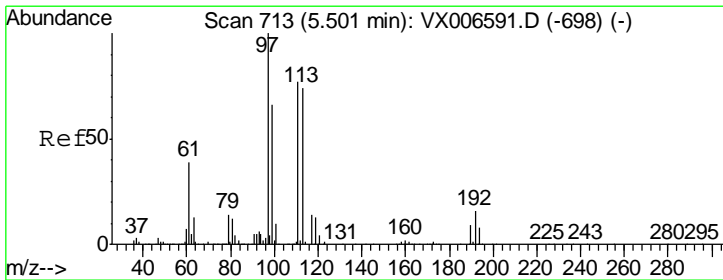
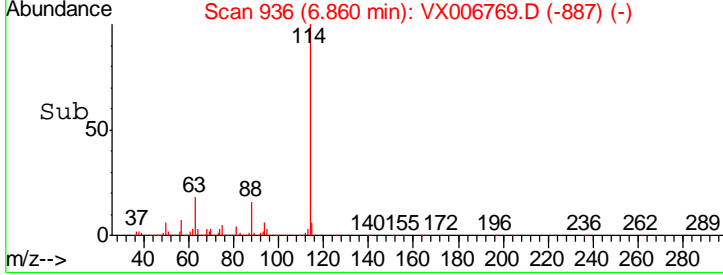
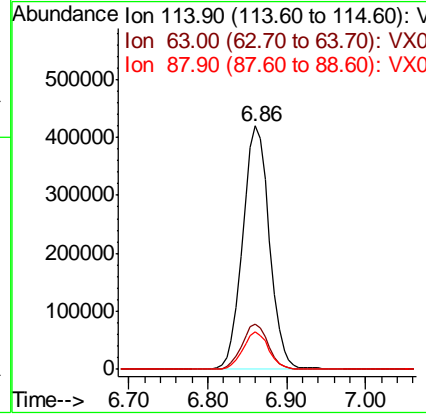
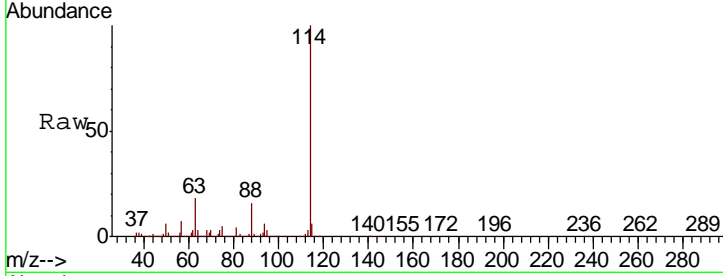




#34
 1,4-Difluorobenzene
 Concen: 50.000 ug/l
 RT: 6.86 min Scan# 936
 Delta R.T. -0.00 min
 Lab File: VX006769.D
 Acq: 22 Dec 2018 13:56

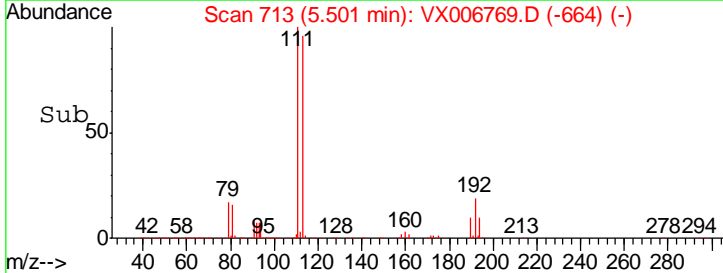
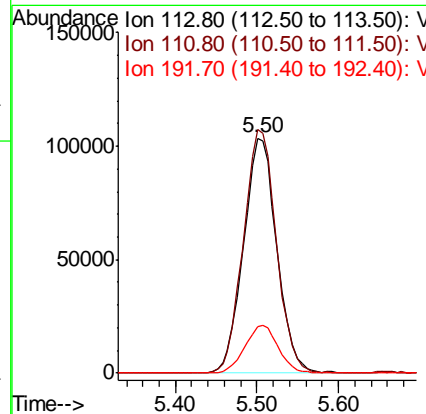
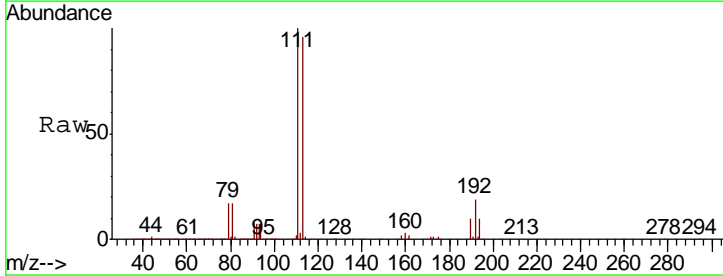
Instrument :
 MSVOA_X
 ClientSampled :
 T11-MW-4-9.0-122018DL

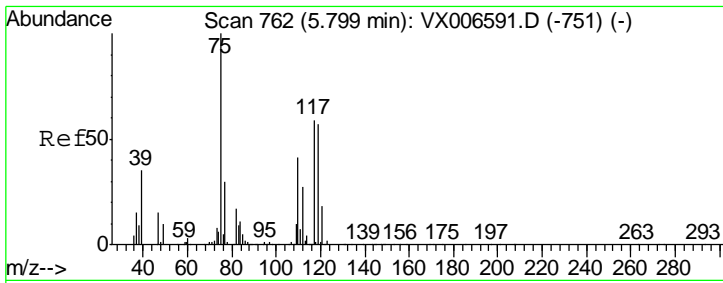
Tgt Ion	Resp	Lower	Upper
114	991174		
63	18.5	0.0	34.8
88	15.5	0.0	28.8



#35
 Dibromofluoromethane
 Concen: 46.799 ug/l
 RT: 5.50 min Scan# 713
 Delta R.T. -0.00 min
 Lab File: VX006769.D
 Acq: 22 Dec 2018 13:56

Tgt Ion	Resp	Lower	Upper
113	293333		
111	102.9	81.6	122.4
192	20.5	16.7	25.1

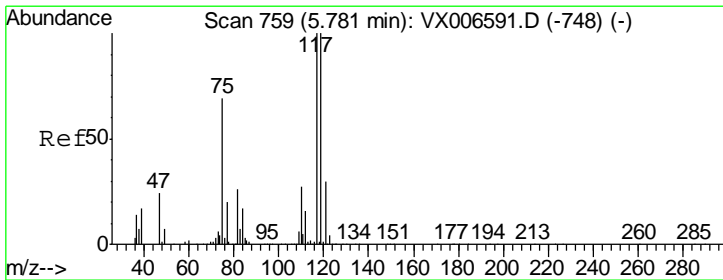
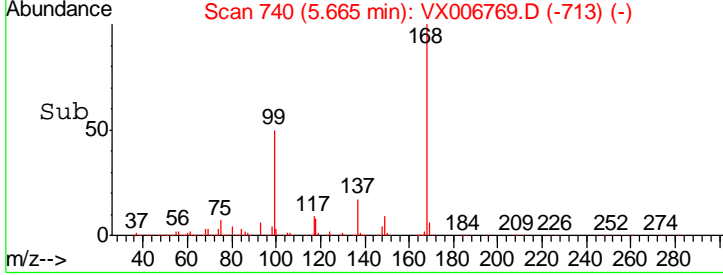
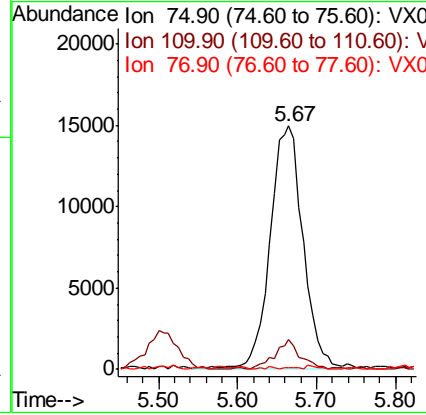
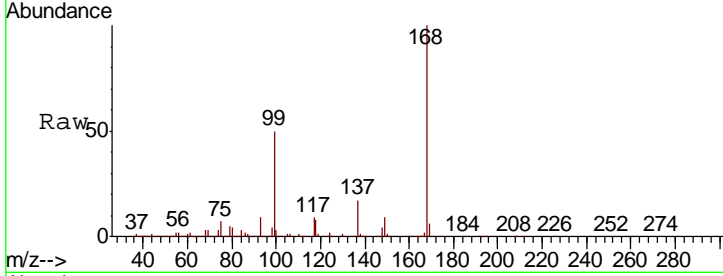




#36
 1,1-Dichloropropene
 Concen: 5.284 ug/l
 RT: 5.67 min Scan# 740
 Delta R.T. -0.13 min
 Lab File: VX006769.D
 Acq: 22 Dec 2018 13:56

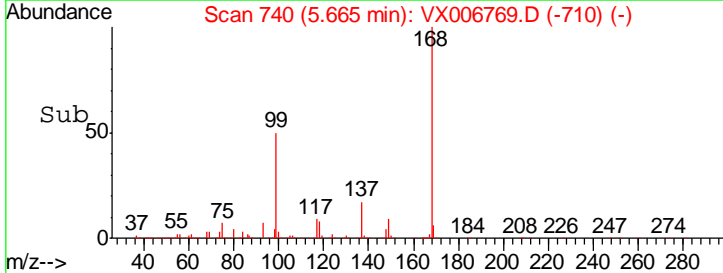
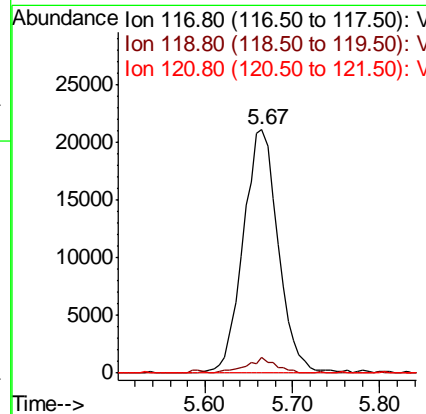
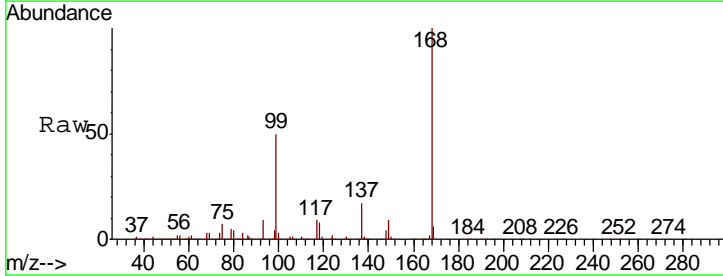
Instrument :
 MSVOA_X
 ClientSampleID :
 T11-MW-4-9.0-122018DL

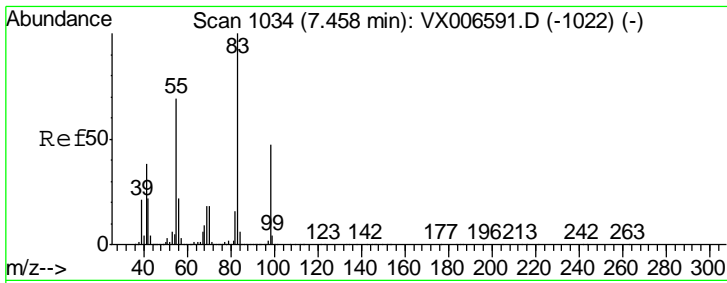
Tgt Ion	Resp	Lower	Upper
75	100		
110	9.6	20.2	60.5#
77	0.4	24.8	37.2#



#38
 Carbon Tetrachloride
 Concen: 7.349 ug/l
 RT: 5.67 min Scan# 740
 Delta R.T. -0.12 min
 Lab File: VX006769.D
 Acq: 22 Dec 2018 13:56

Tgt Ion	Resp	Lower	Upper
117	100		
119	6.5	79.4	119.2#
121	0.0	24.0	36.0#

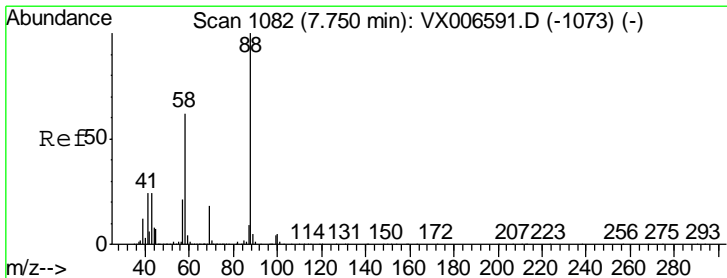
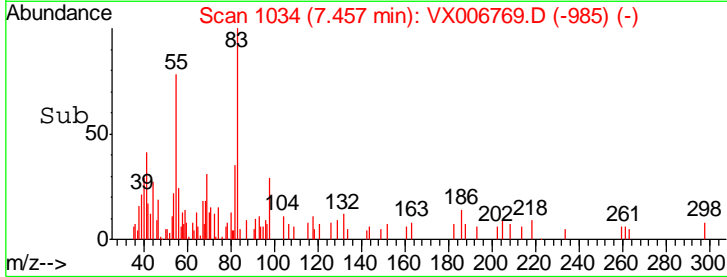
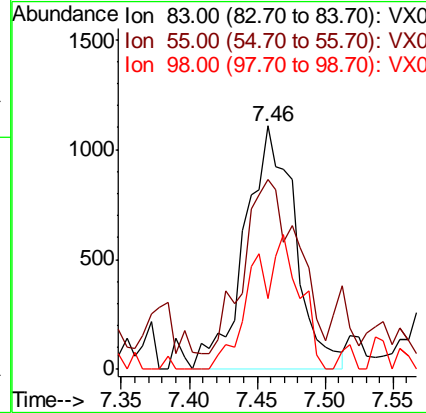
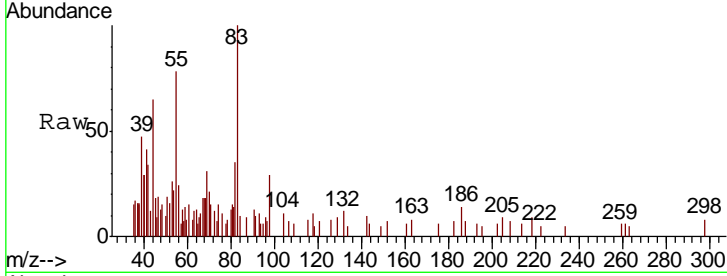




#39
 Methylcyclohexane
 Concen: 0.265 ug/l
 RT: 7.46 min Scan# 1034
 Delta R.T. -0.00 min
 Lab File: VX006769.D
 Acq: 22 Dec 2018 13:56

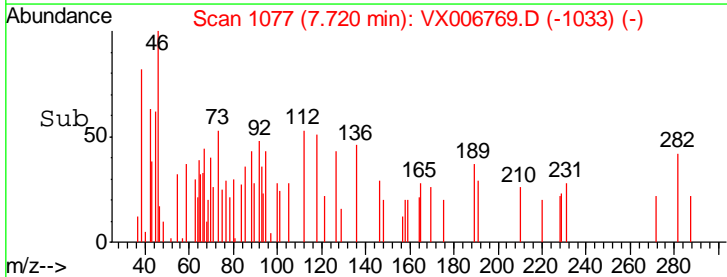
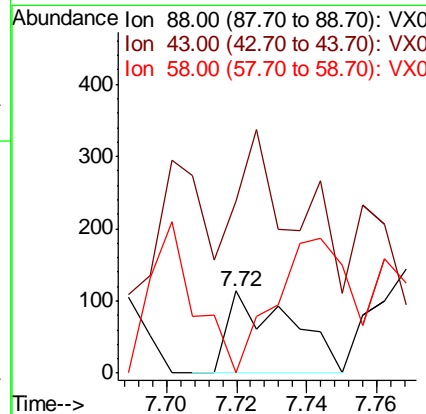
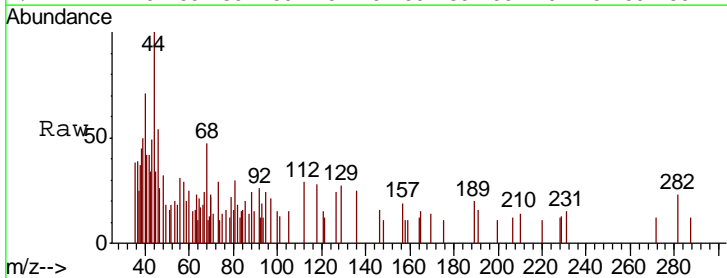
Instrument :
 MSVOA_X
 ClientSampled :
 T11-MW-4-9.0-122018DL

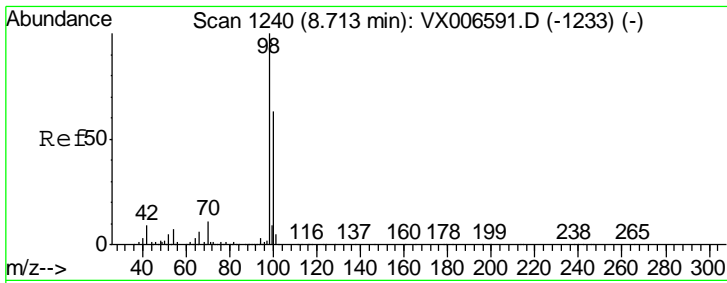
Tgt Ion	Resp	Lower	Upper
83	100		
55	71.1	54.9	82.3
98	29.1	37.9	56.9#



#49
 1,4-Dioxane
 Concen: Below Cal
 RT: 7.72 min Scan# 1077
 Delta R.T. -0.03 min
 Lab File: VX006769.D
 Acq: 22 Dec 2018 13:56

Tgt Ion	Resp	Lower	Upper
88	100		
43	88.7	22.2	33.4#
58	0.0	51.0	76.4#

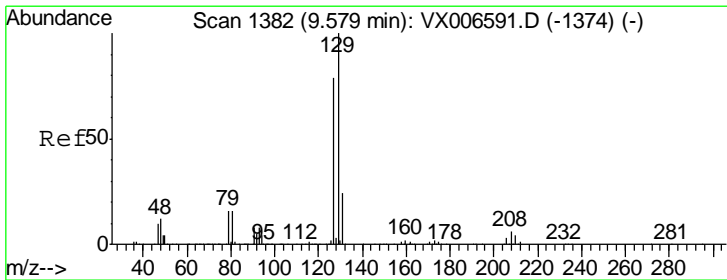
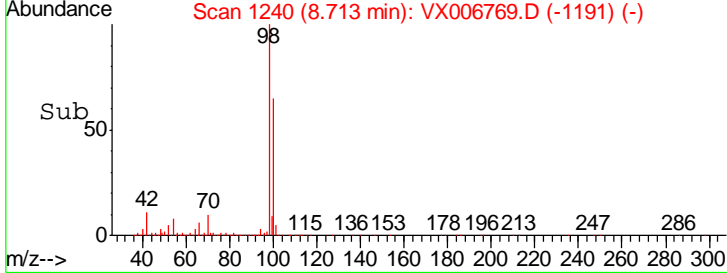
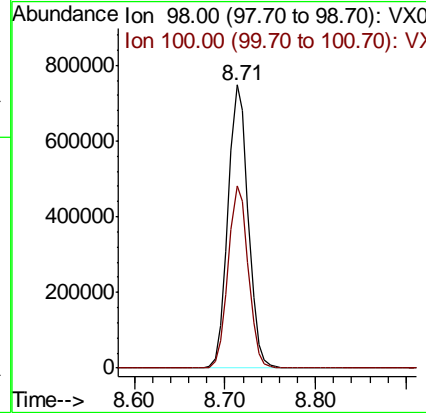
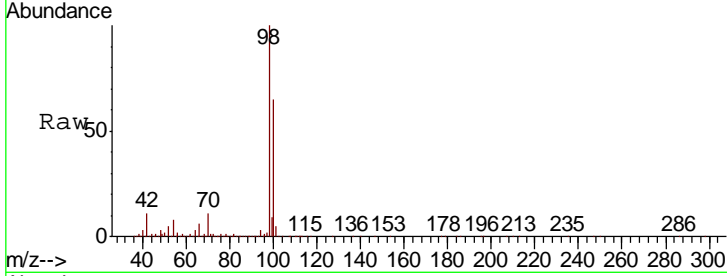




#50
 Toluene-d8
 Concen: 49.094 ug/l
 RT: 8.71 min Scan# 1240
 Delta R.T. -0.00 min
 Lab File: VX006769.D
 Acq: 22 Dec 2018 13:56

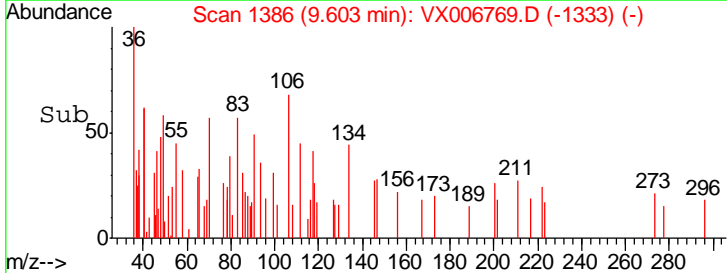
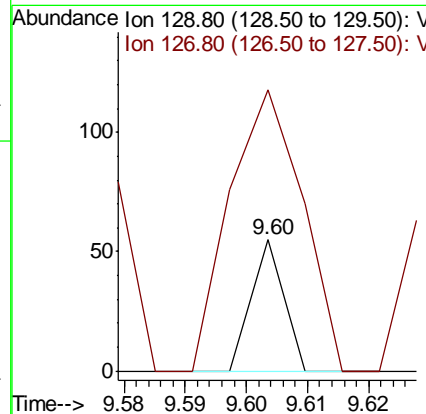
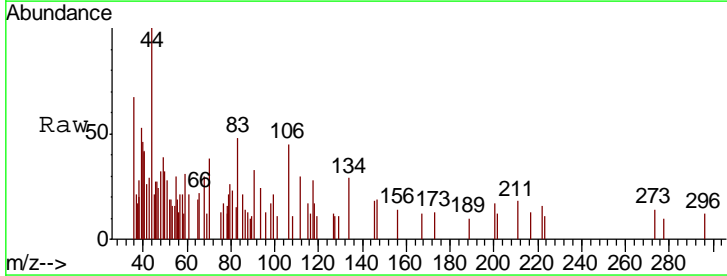
Instrument :
 MSVOA_X
ClientSampled :
 T11-MW-4-9.0-122018DL

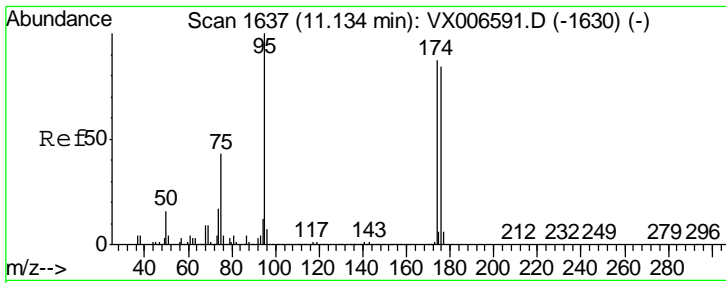
Tgt Ion: 98 Resp: 1160116
 Ion Ratio Lower Upper
 98 100
 100 64.5 52.0 78.0



#60
 Dibromochloromethane
 Concen: 2.327 ug/l
 RT: 9.60 min Scan# 1386
 Delta R.T. 0.02 min
 Lab File: VX006769.D
 Acq: 22 Dec 2018 13:56

Tgt Ion: 129 Resp: 20
 Ion Ratio Lower Upper
 129 100
 127 485.0 39.3 117.8#

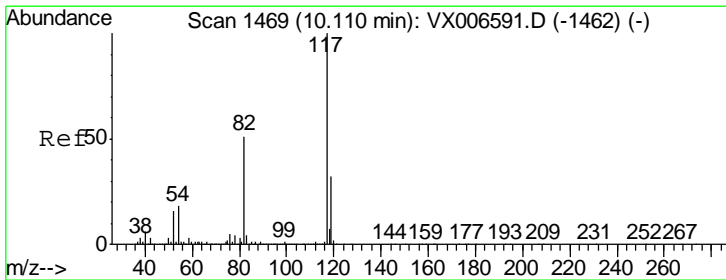
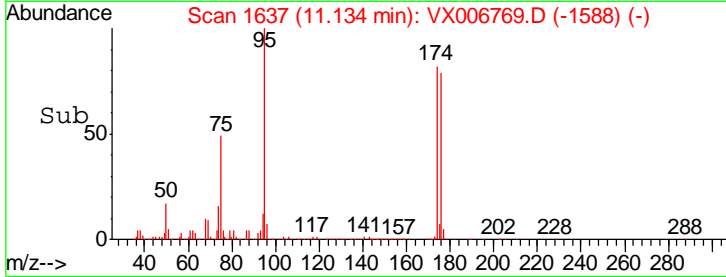
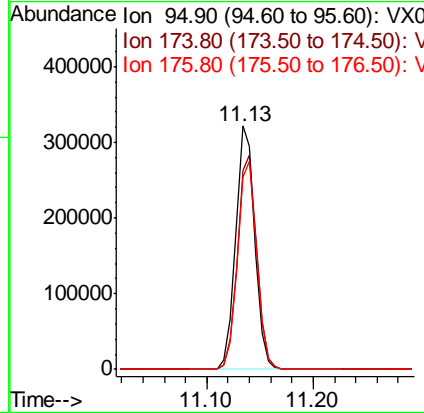
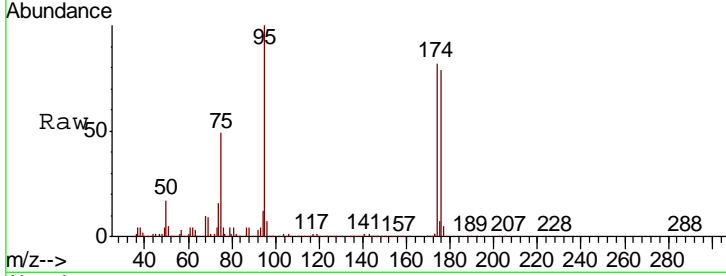




#62
 4-Bromofluorobenzene
 Concen: 46.758 ug/l
 RT: 11.13 min Scan# 1637
 Delta R.T. -0.00 min
 Lab File: VX006769.D
 Acq: 22 Dec 2018 13:56

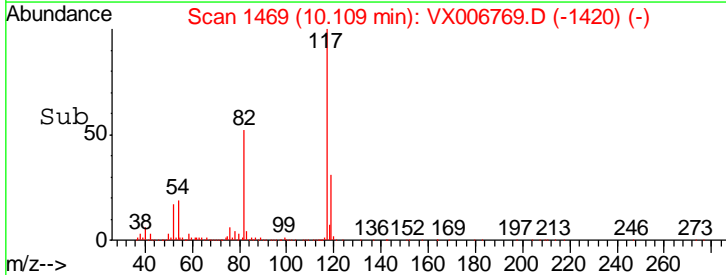
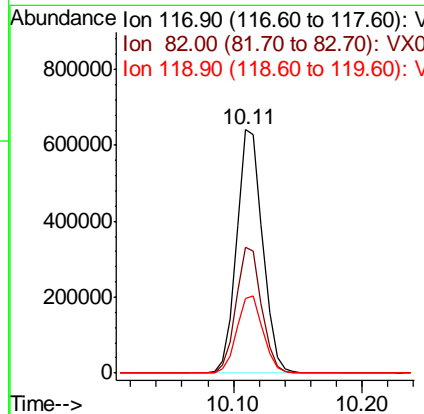
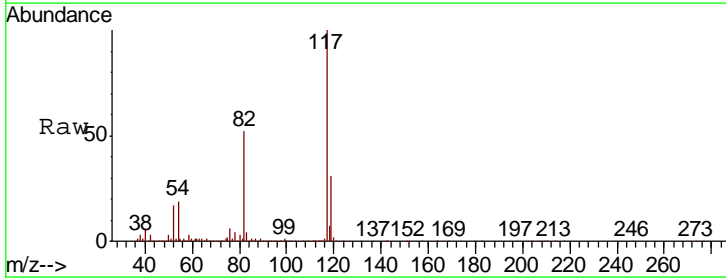
Instrument :
 MSVOA_X
 ClientSampled :
 T11-MW-4-9.0-122018DL

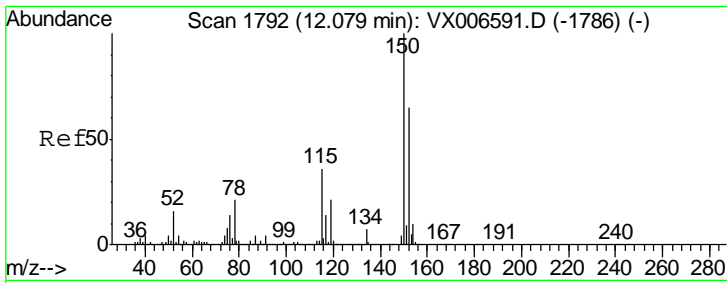
Tgt Ion	Resp	Lower	Upper
95	404663		
174	89.2	0.0	182.2
176	86.9	0.0	178.8



#63
 Chlorobenzene-d5
 Concen: 50.000 ug/l
 RT: 10.11 min Scan# 1469
 Delta R.T. -0.00 min
 Lab File: VX006769.D
 Acq: 22 Dec 2018 13:56

Tgt Ion	Resp	Lower	Upper
117	898196		
82	51.8	41.0	61.6
119	30.8	25.4	38.0

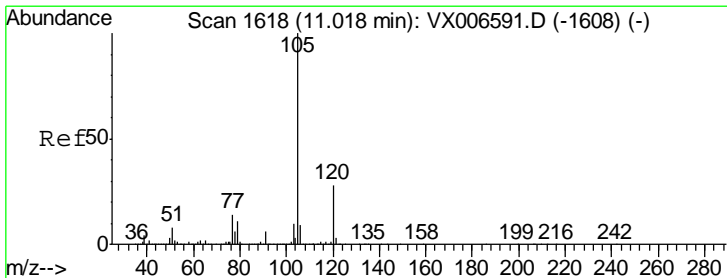
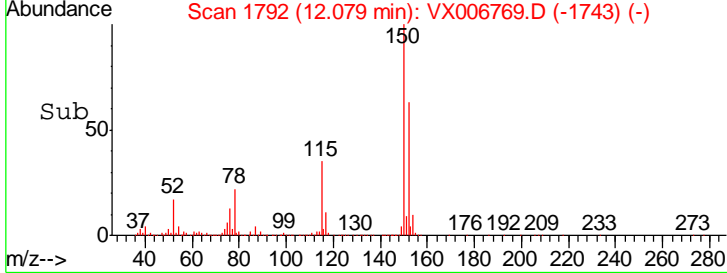
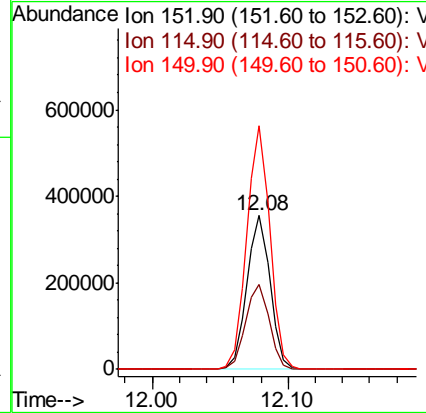
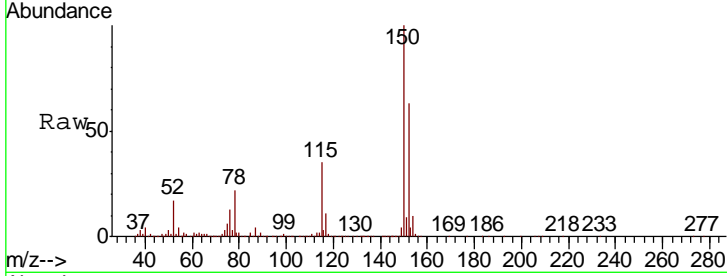




#72
 1,4-Dichlorobenzene-d4
 Concen: 50.000 ug/l
 RT: 12.08 min Scan# 1792
 Delta R.T. -0.00 min
 Lab File: VX006769.D
 Acq: 22 Dec 2018 13:56

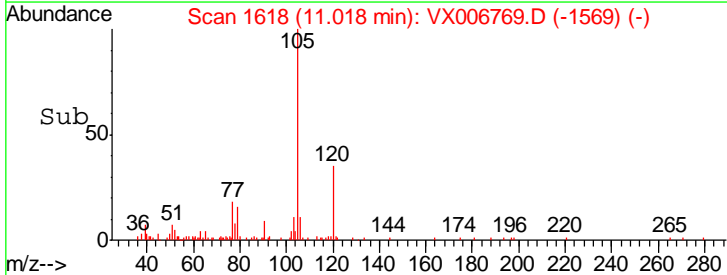
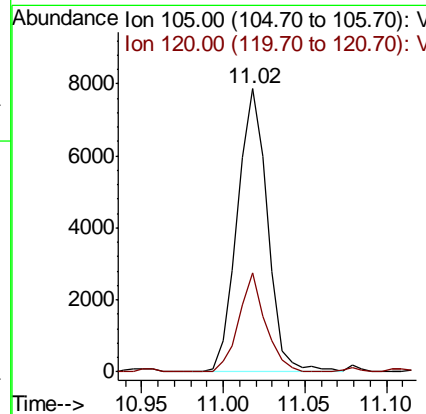
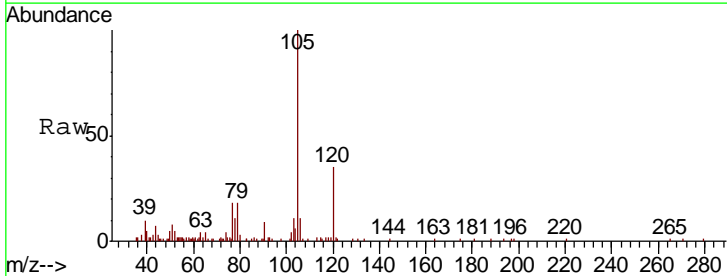
Instrument : MSVOA_X
 ClientSampled : T11-MW-4-9.0-122018DL

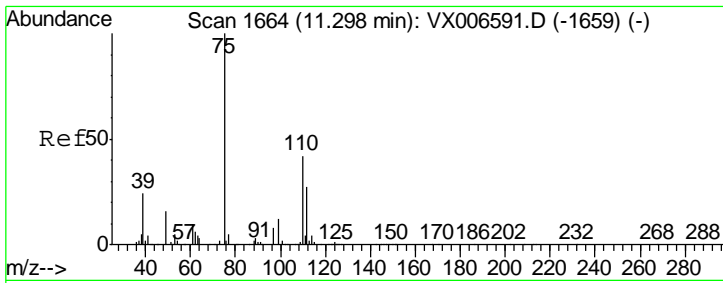
Tgt Ion	Resp	Lower	Upper
152	100		
115	56.8	39.1	117.2
150	158.0	0.0	344.8



#73
 Isopropylbenzene
 Concen: 0.350 ug/l
 RT: 11.02 min Scan# 1618
 Delta R.T. -0.00 min
 Lab File: VX006769.D
 Acq: 22 Dec 2018 13:56

Tgt Ion	Resp	Lower	Upper
105	100		
120	30.7	14.1	42.4

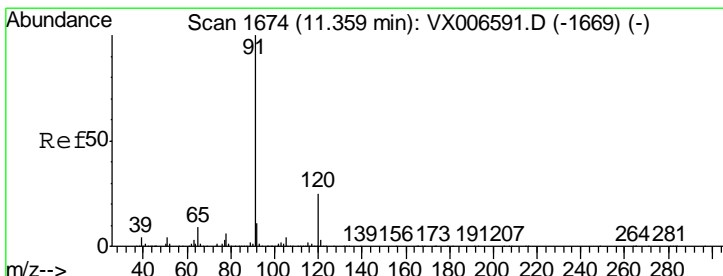
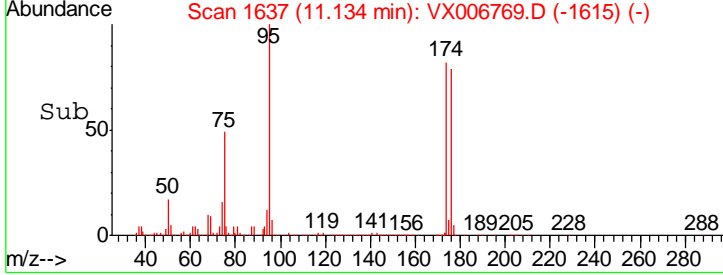
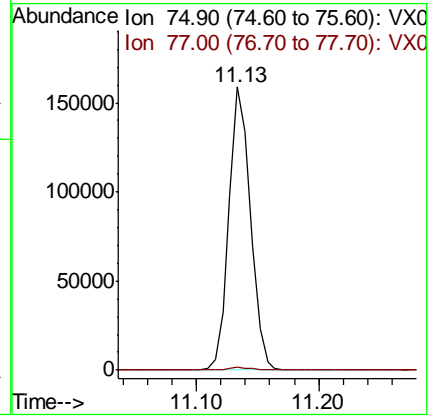
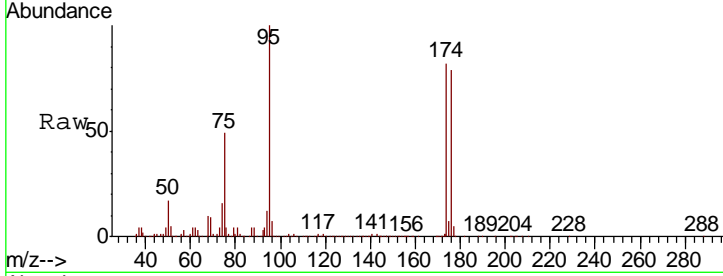




#76
 1,2,3-Trichloropropane
 Concen: 24.778 ug/l
 RT: 11.13 min Scan# 1637
 Delta R.T. -0.16 min
 Lab File: VX006769.D
 Acq: 22 Dec 2018 13:56

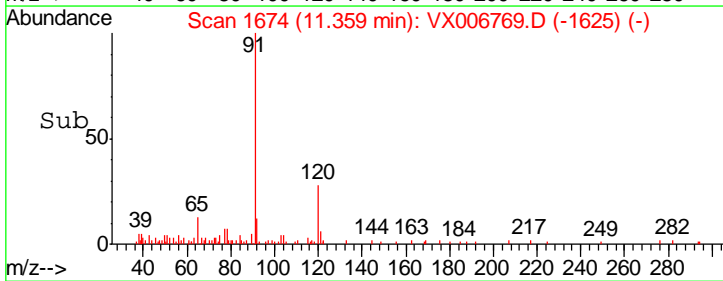
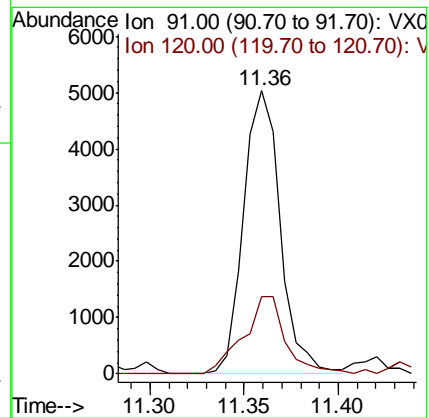
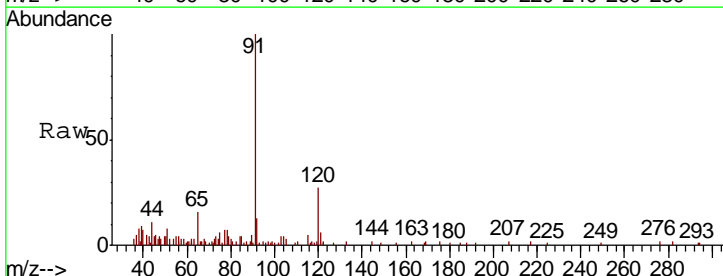
Instrument : MSVOA_X
 ClientSampleID : T11-MW-4-9.0-122018DL

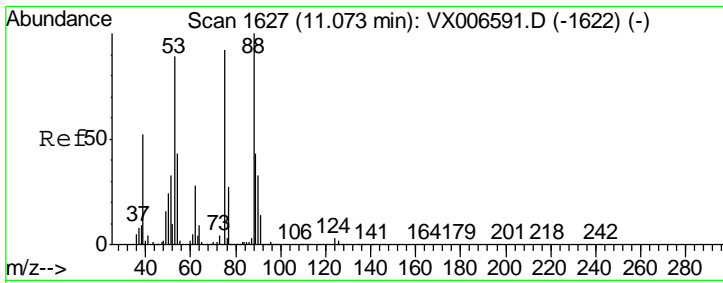
Tgt Ion	Resp	Lower	Upper
75	194556		
77	1.1	18.5	55.5#



#78
 n-propylbenzene
 Concen: 0.214 ug/l
 RT: 11.36 min Scan# 1674
 Delta R.T. -0.00 min
 Lab File: VX006769.D
 Acq: 22 Dec 2018 13:56

Tgt Ion	Resp	Lower	Upper
91	6820		
120	31.6	12.7	38.0

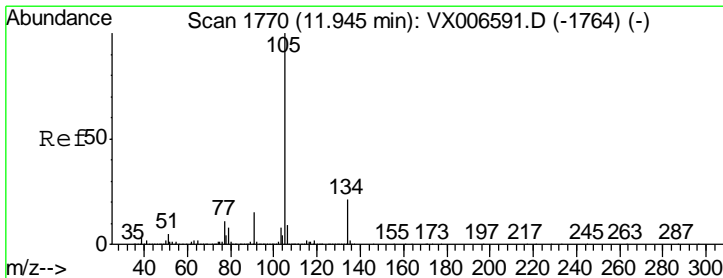
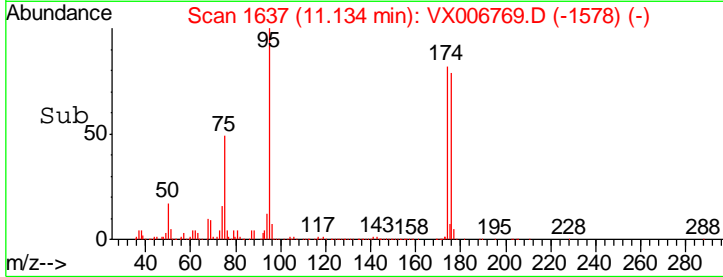
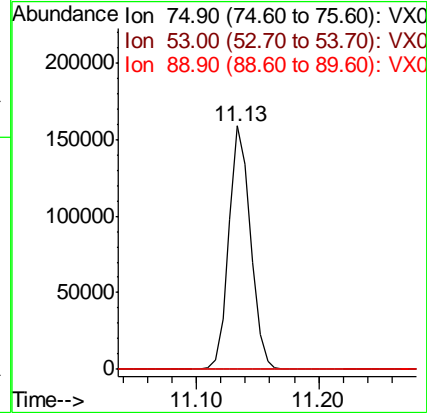
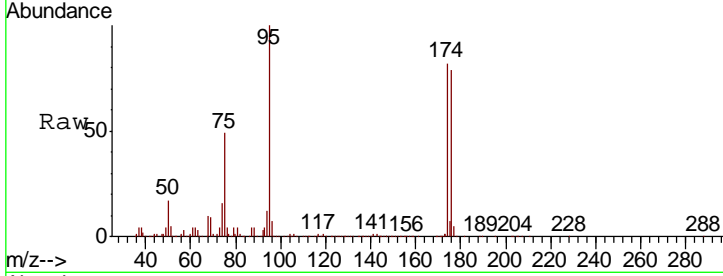




#81
 trans-1,4-Dichloro-2-butene
 Concen: 73.257 ug/l
 RT: 11.13 min Scan# 1637
 Delta R.T. 0.06 min
 Lab File: VX006769.D
 Acq: 22 Dec 2018 13:56

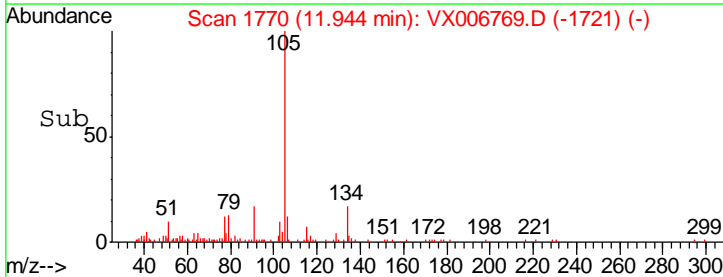
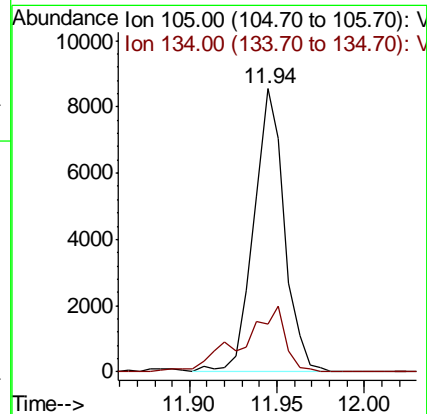
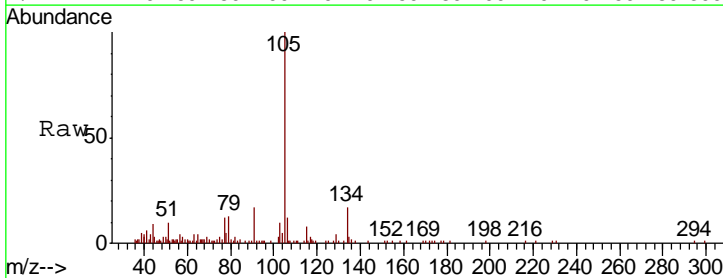
Instrument :
 MSVOA_X
 ClientSampled :
 T11-MW-4-9.0-122018DL

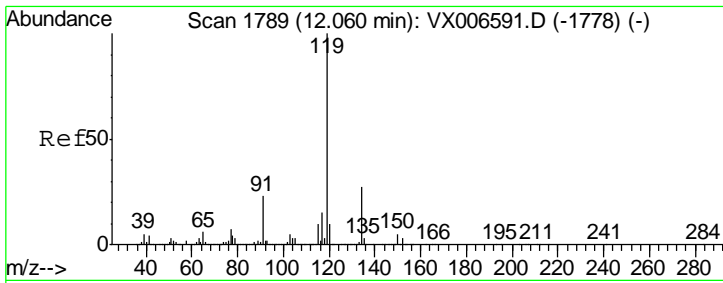
Tgt Ion	Resp	Lower	Upper
75	100		
53	0.1	79.7	119.5#
89	0.0	38.0	57.0#



#85
 sec-Butylbenzene
 Concen: 0.355 ug/l
 RT: 11.94 min Scan# 1770
 Delta R.T. -0.00 min
 Lab File: VX006769.D
 Acq: 22 Dec 2018 13:56

Tgt Ion	Resp	Lower	Upper
105	100		
134	33.2	10.7	31.9#

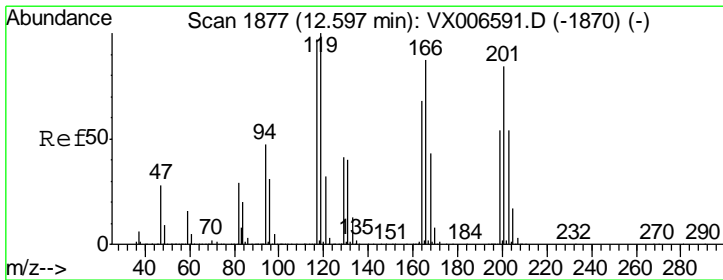
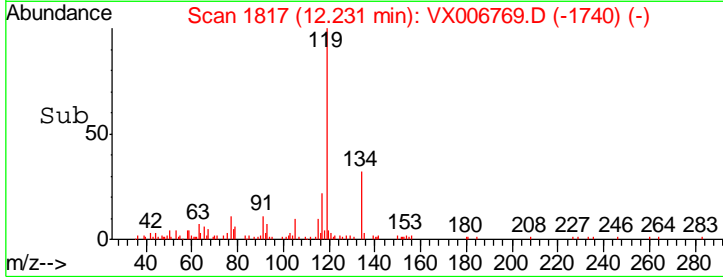
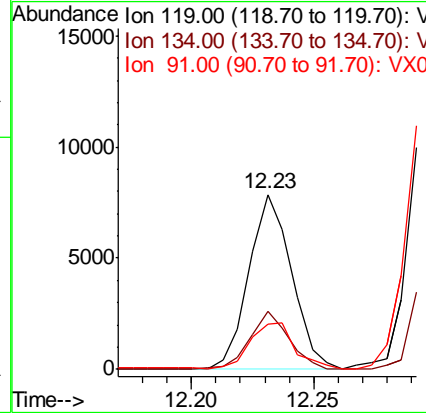
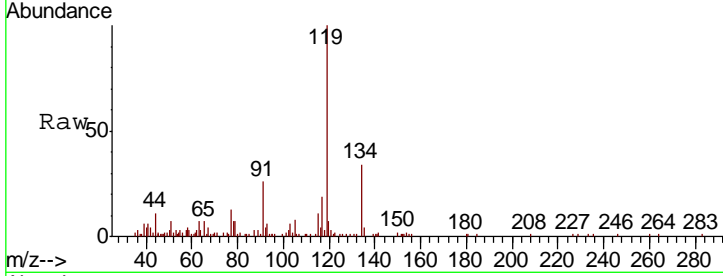




#86
 p-Isopropyltoluene
 Concen: 0.373 ug/l
 RT: 12.23 min Scan# 1817
 Delta R.T. 0.17 min
 Lab File: VX006769.D
 Acq: 22 Dec 2018 13:56

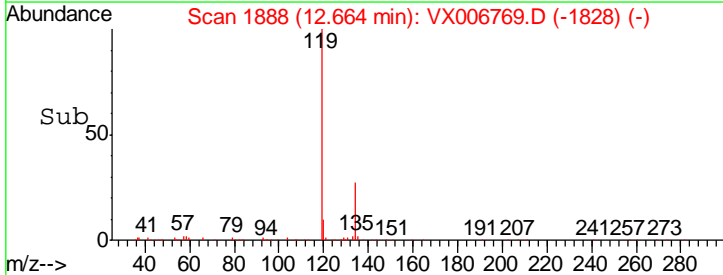
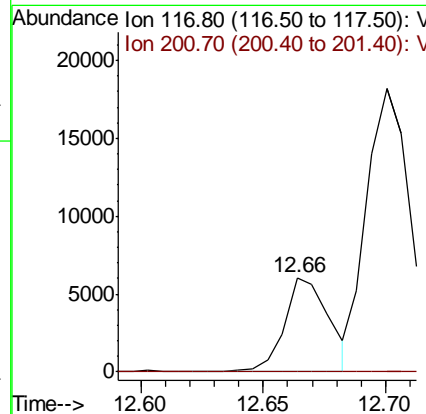
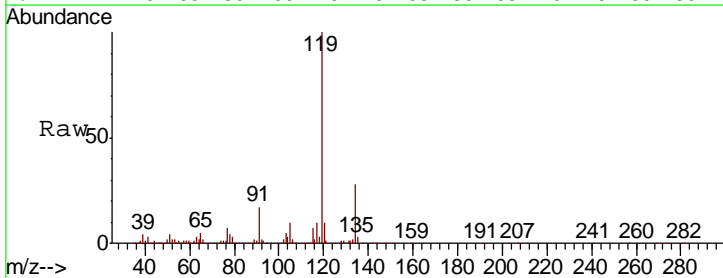
Instrument : MSVOA_X
 ClientSampled : T11-MW-4-9.0-122018DL

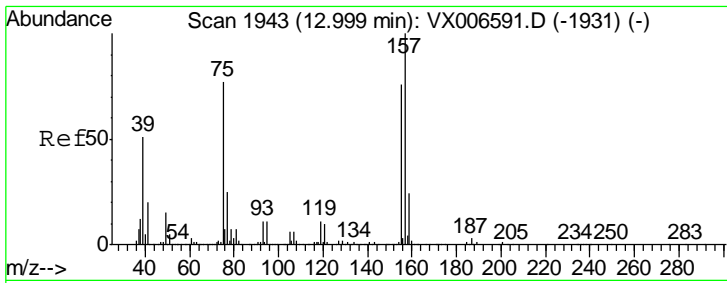
Tgt Ion	Resp	Lower	Upper
119	9577		
134	30.4	14.0	41.9
91	28.3	11.3	33.9



#90
 Hexachloroethane
 Concen: 5.073 ug/l
 RT: 12.66 min Scan# 1888
 Delta R.T. 0.07 min
 Lab File: VX006769.D
 Acq: 22 Dec 2018 13:56

Tgt Ion	Resp	Lower	Upper
117	7659		
117	100		
201	0.0	42.9	128.7#





#92
 1,2-Dibromo-3-Chloropropane
 Concen: 0.379 ug/l
 RT: 12.98 min Scan# 1940
 Delta R.T. -0.02 min
 Lab File: VX006769.D
 Acq: 22 Dec 2018 13:56

Instrument :
 MSVOA_X
 ClientSampled :
 T11-MW-4-9.0-122018DL

Tot Ion	75 Resp	674
Ion Ratio	Lower	Upper
75	100	
155	4.3	50.6 151.8#
157	0.0	64.6 193.8#

