

Data Path : Z:\voasrv\HPCHEM1\MSVOA\_X\Data\VX122220\  
 Data File : VX020303.D  
 Acq On : 22 Dec 2020 15:06  
 Operator : JC/MD  
 Sample : L5123-03DL 5X  
 Misc : 5.0mL/MSVOA\_X/WATER  
 ALS Vial : 15 Sample Multiplier: 1

**Instrument :**  
 MSVOA\_X  
**ClientSampleId :**  
 TT101D1-20201211DL

Quant Time: Dec 23 00:31:09 2020  
 Quant Method : Z:\VOASRV\HPCHEM1\MSVOA\_X\METHOD\82X12182CW.M  
 Quant Title : SW846 8260  
 QLast Update : Fri Dec 18 13:09:49 2020  
 Response via : Initial Calibration

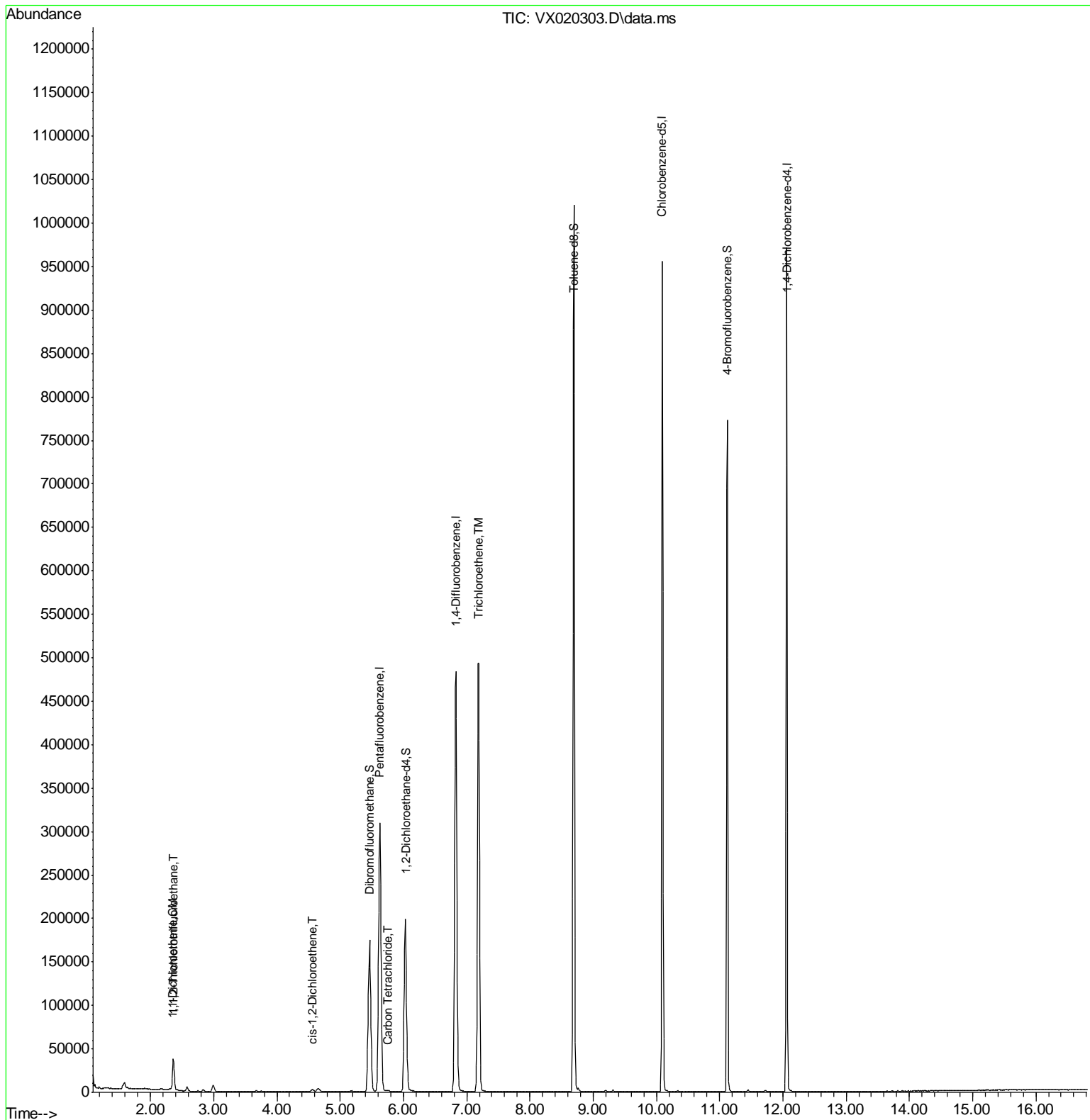
Compound	R. T.	Cl on	Response	Conc	Units	Dev(Min)
<b>Internal Standards</b>						
1) Pentafluorobenzene	5.629	168	298791	50.00	ug/l	0.01
34) 1,4-Difluorobenzene	6.830	114	496025	50.00	ug/l	0.00
63) Chlorobenzene-d5	10.092	117	458868	50.00	ug/l	0.00
72) 1,4-Dichlorobenzene-d4	12.061	152	196997	50.00	ug/l	0.00
<b>System Monitoring Compounds</b>						
33) 1,2-Dichloroethane-d4	6.031	65	189896	47.41	ug/l	0.00
Spiked Amount	50.000	Range 61 - 141	Recovery =	94.82%		
35) Dibromofluoromethane	5.464	113	153127	48.26	ug/l	0.00
Spiked Amount	50.000	Range 69 - 133	Recovery =	96.52%		
50) Toluene-d8	8.695	98	602227	49.31	ug/l	0.00
Spiked Amount	50.000	Range 65 - 126	Recovery =	98.62%		
62) 4-Bromofluorobenzene	11.122	95	213426	45.66	ug/l	0.00
Spiked Amount	50.000	Range 58 - 135	Recovery =	91.32%		
<b>Target Compounds</b>						
9) 1,1,2-Trichlorotrifluoroethane	2.361	101	9827	3.29	ug/l	99
12) 1,1-Dichloroethene	2.355	96	4700	1.54	ug/l	94
27) cis-1,2-Dichloroethene	4.556	96	1693	0.41	ug/l	97
38) Carbon Tetrachloride	5.745	117	1331	0.29	ug/l	98
44) Trichloroethene	7.190	130	195996	49.69	ug/l	100

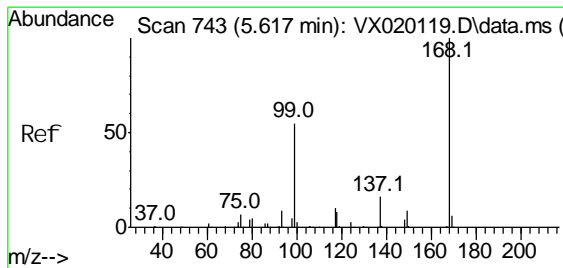
(#) = qualifier out of range (m) = manual integration (+) = signals summed

Data Path : Z:\voasrv\HPCHEM1\MSVOA\_X\Data\VX122220\  
 Data File : VX020303.D  
 Acq On : 22 Dec 2020 15:06  
 Operator : JC/MD  
 Sample : L5123-03DL 5X  
 Mi sc : 5.0mL/MSVOA\_X/WATER  
 ALS Vial : 15 Sample Multiplier: 1

**Instrument :**  
 MSVOA\_X  
**Client Sample ID :**  
 TT101D1-20201211DL

Quant Time: Dec 23 00:31:09 2020  
 Quant Method : Z:\VOASRV\HPCHEM1\MSVOA\_X\METHCD\82X121820W.M  
 Quant Title : SW846 8260  
 QLast Update : Fri Dec 18 13:09:49 2020  
 Response via : Initial Calibration

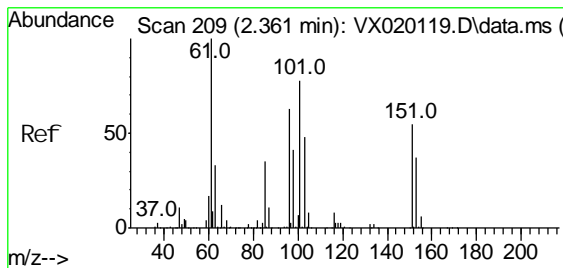
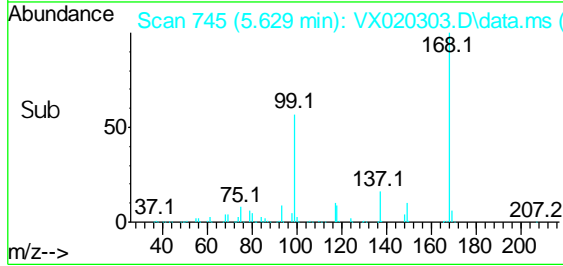
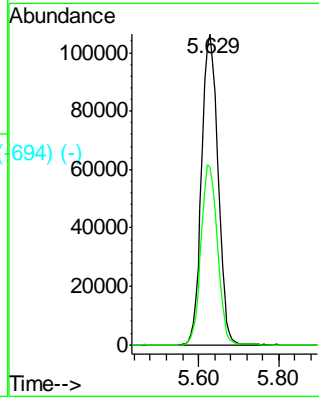
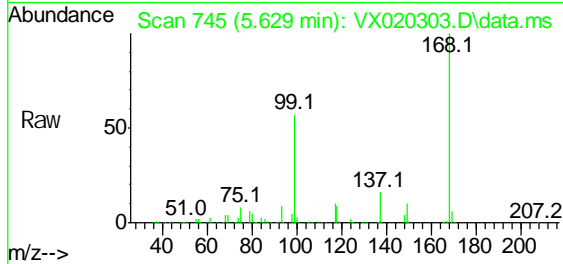




Scan 743 (5.617 min): VX020119.D\data.ms (-743) (-)  
 Pentafluorobenzene  
 Concen: 50.00 ug/l  
 RT: 5.629 min Scan# 745  
 Delta R.T. 0.012 min  
 Lab File: VX020303.D  
 Acq: 22 Dec 2020 15:06

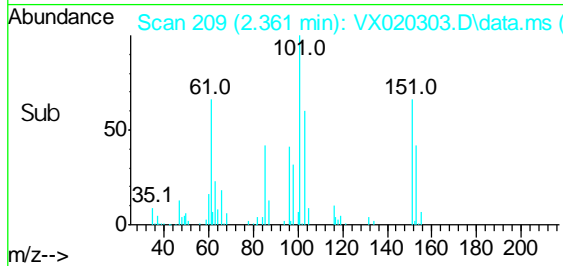
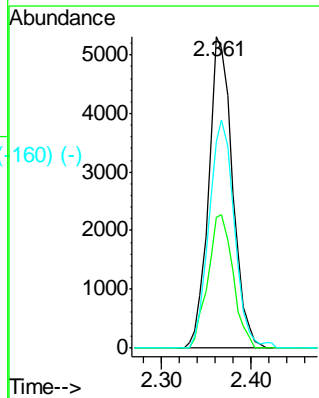
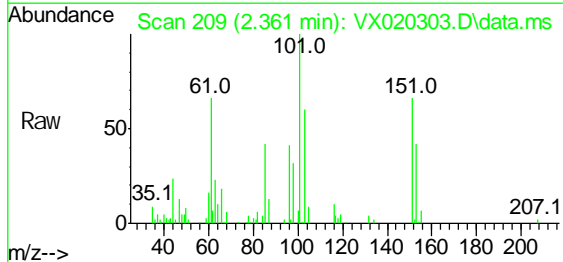
**Instrument :**  
 MSVOA\_X  
**ClientSampled :**  
 TT101D1-20201211DL

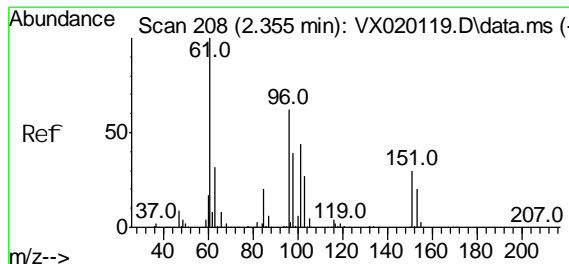
Tgt Ion: 168 Resp: 298791  
 Ion Ratio Lower Upper  
 168 100  
 99 57.3 45.8 68.6



Scan 209 (2.361 min): VX020119.D\data.ms (-209) (-)  
 1,1,2-Trichlorotrifluoroethane  
 Concen: 3.29 ug/l  
 RT: 2.361 min Scan# 209  
 Delta R.T. 0.000 min  
 Lab File: VX020303.D  
 Acq: 22 Dec 2020 15:06

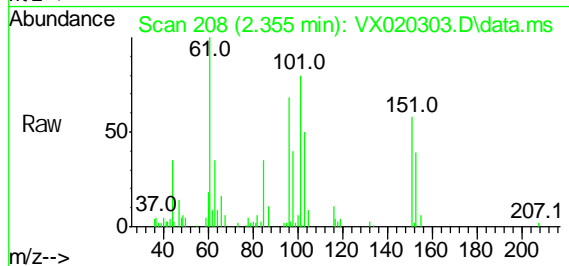
Tgt Ion: 101 Resp: 9827  
 Ion Ratio Lower Upper  
 101 100  
 85 44.9 34.9 52.3  
 151 77.5 61.4 92.2



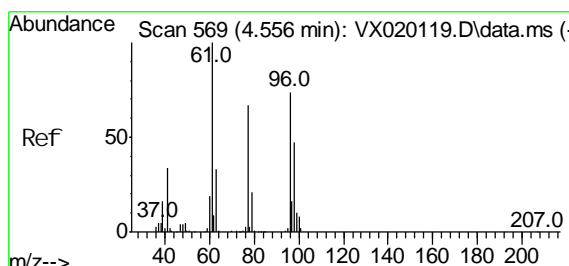
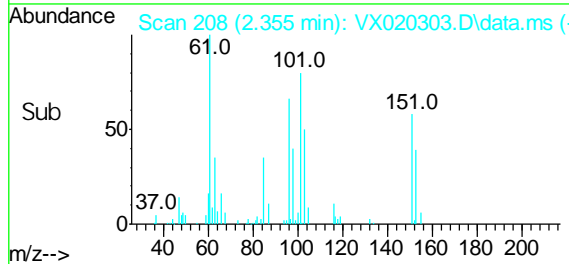
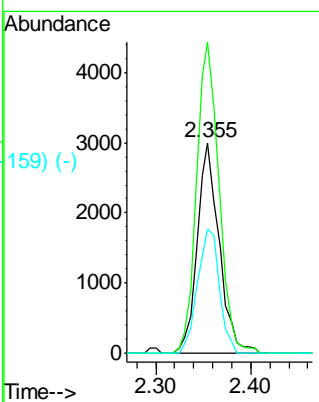


1, 1-Di chl oroethene  
 Concen: 1.54 ug/l  
 RT: 2.355 min Scan# 208  
 Del ta R.T. C.000 min  
 Lab File: VX020303.D  
 Acq: 22 Dec 2020 15:06

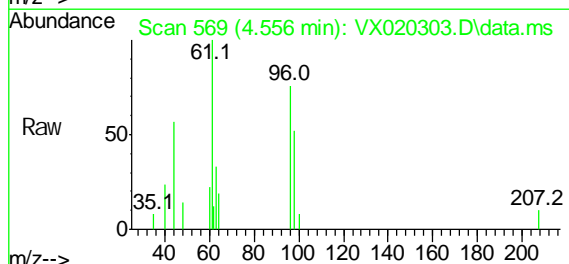
**Instrument :**  
 MSVOA\_X  
**ClientSampled :**  
 TT101D1-20201211DL



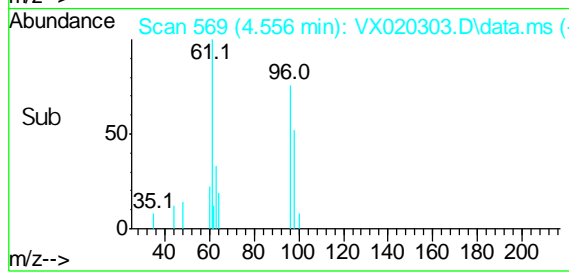
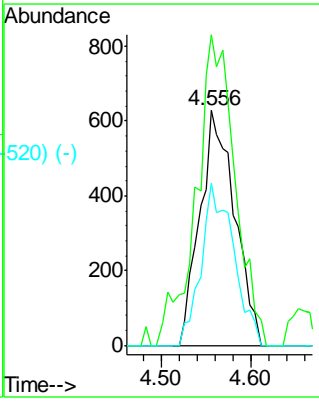
Tgt Ion: 96 Resp: 4700  
 Ion Ratio Lower Upper  
 96 100  
 61 148.1 124.6 187.0  
 98 58.9 50.6 76.0

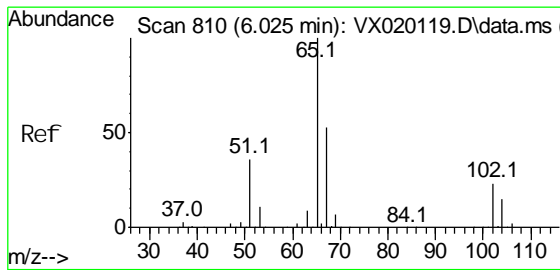


ci s-1, 2-Di chl oroethene  
 Concen: 0.41 ug/l  
 RT: 4.556 min Scan# 569  
 Del ta R.T. -0.000 min  
 Lab File: VX020303.D  
 Acq: 22 Dec 2020 15:06



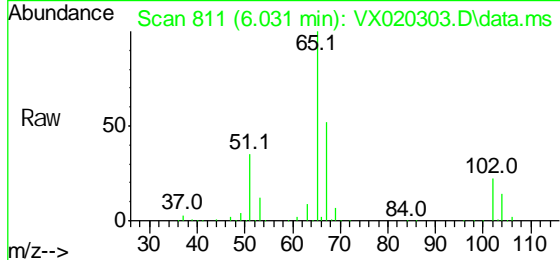
Tgt Ion: 96 Resp: 1693  
 Ion Ratio Lower Upper  
 96 100  
 61 147.8 0.0 285.6  
 98 64.9 0.0 129.6



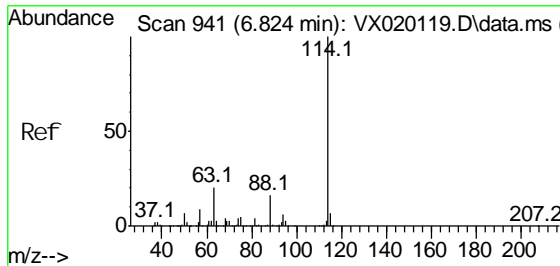
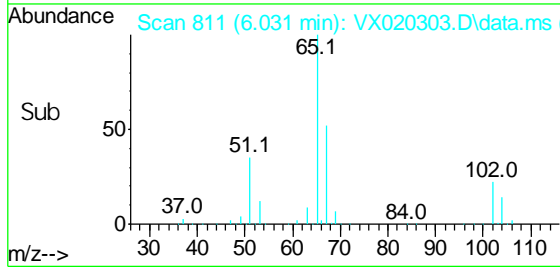
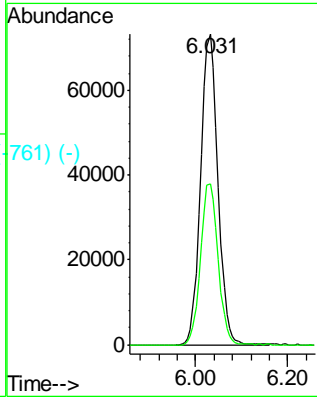


#73 (-)  
 1, 2-Di chl orcethane-d4  
 Concen: 47.41 ug/l  
 RT: 6.031 min Scan# 811  
 Del ta R.T. C.006 min  
 Lab File: VX020303.D  
 Acq: 22 Dec 2020 15:06

**Instrument :**  
 MSVOA\_X  
**ClientSampled :**  
 TT101D1-20201211DL

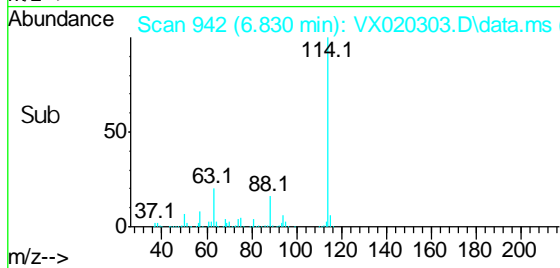
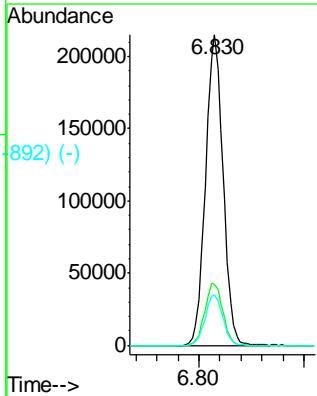
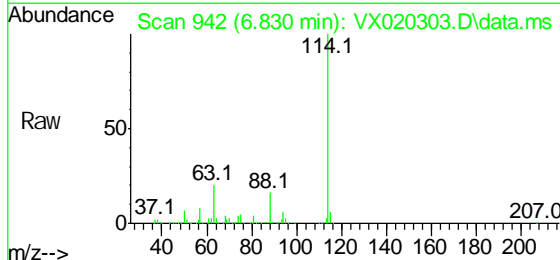


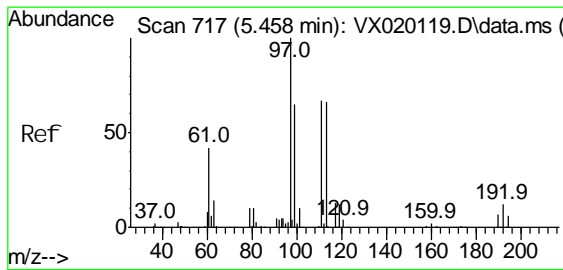
Tgt Ion: 65 Resp: 189896  
 Ion Ratio Lower Upper  
 65 100  
 67 52.7 0.0 105.4



#64 (-)  
 1, 4-Di fl uorobenzene  
 Concen: 50.00 ug/l  
 RT: 6.830 min Scan# 942  
 Del ta R.T. 0.006 min  
 Lab File: VX020303.D  
 Acq: 22 Dec 2020 15:06

Tgt Ion: 114 Resp: 496025  
 Ion Ratio Lower Upper  
 114 100  
 63 19.7 0.0 40.8  
 88 16.2 0.0 32.8



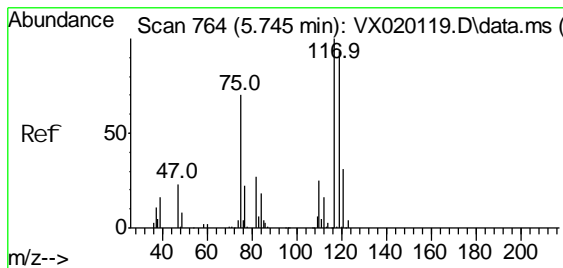
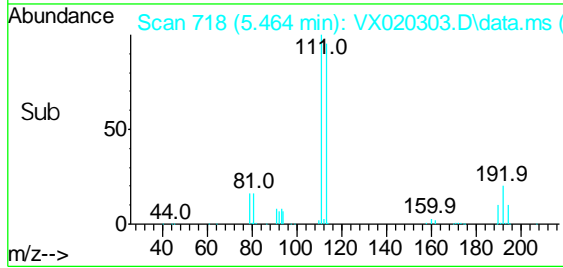
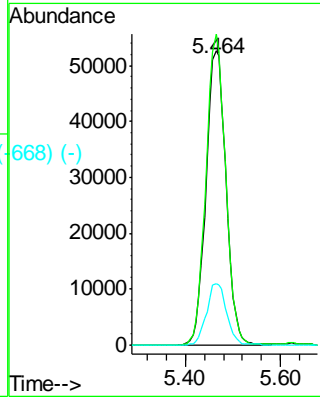
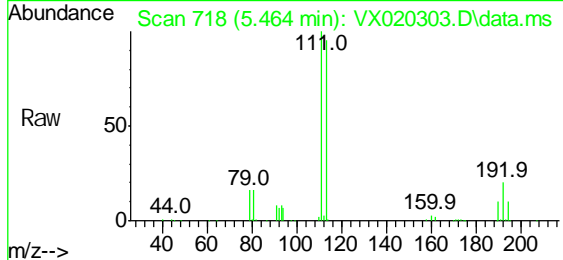


#35 (-)  
 Di bromofluoromethane  
 Concen: 48.26 ug/l  
 RT: 5.464 min Scan# 718  
 Delta R.T. C.006 min  
 Lab File: VX020303.D  
 Acq: 22 Dec 2020 15:06

**Instrument :**  
 MSVOA\_X  
**ClientSampled :**  
 TT101D1-20201211DL

Tgt Ion: 113 Resp: 153127

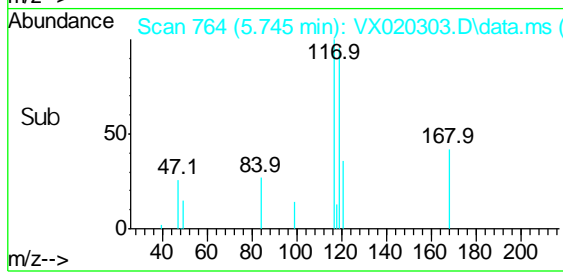
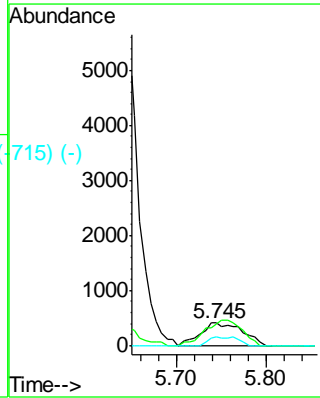
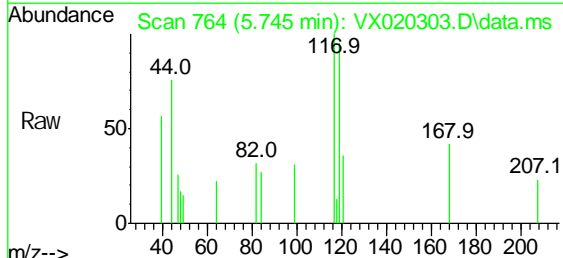
Ion Ratio	Lower	Upper
113	100	
111	103.3	81.9 122.9
192	20.6	16.7 25.1

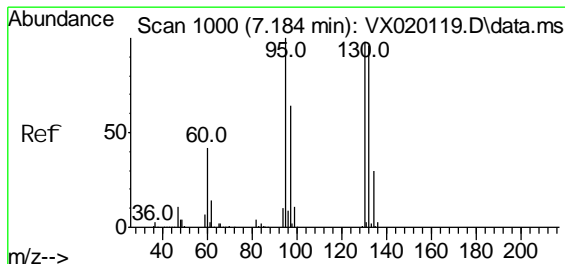


#38 (-)  
 Carbon Tetrachloride  
 Concen: 0.29 ug/l  
 RT: 5.745 min Scan# 764  
 Delta R.T. -0.000 min  
 Lab File: VX020303.D  
 Acq: 22 Dec 2020 15:06

Tgt Ion: 117 Resp: 1331

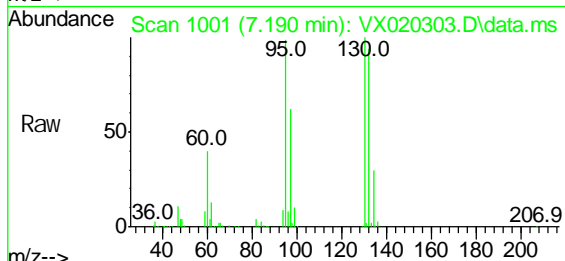
Ion Ratio	Lower	Upper
117	100	
119	95.1	76.2 114.2
121	35.8	24.8 37.2



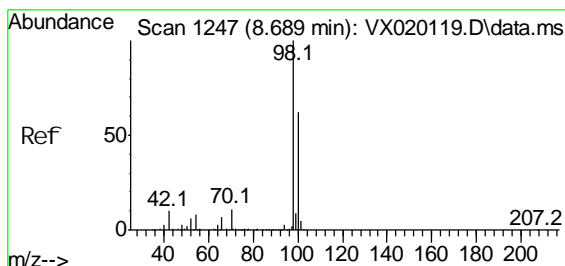
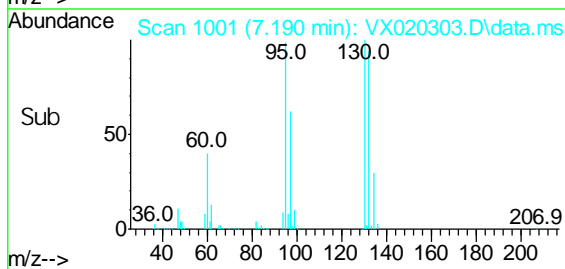
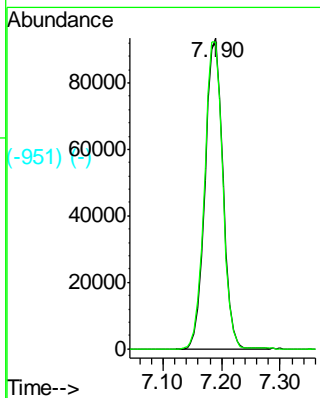


#44 (-)  
 Tri chloroethene  
 Concen: 49.69 ug/l  
 RT: 7.190 min Scan# 1001  
 Delta R.T. 0.006 min  
 Lab File: VX020303.D  
 Acq: 22 Dec 2020 15:06

**Instrument :**  
 MSVOA\_X  
**ClientSampled :**  
 TT101D1-20201211DL

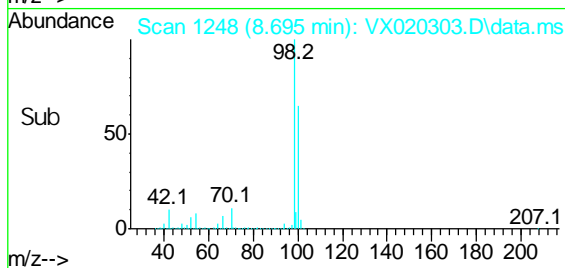
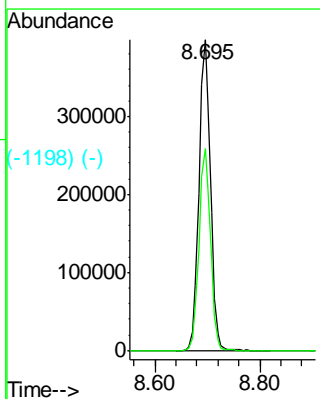
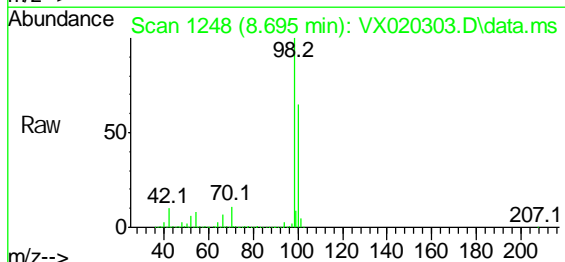


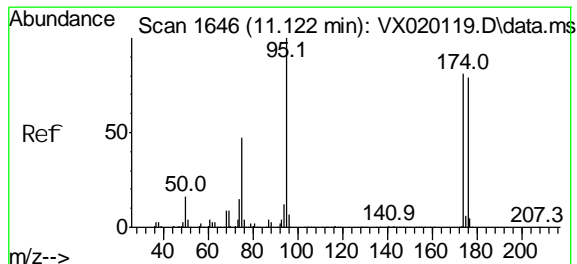
Tgt Ion: 130 Resp: 195996  
 Ion Ratio Lower Upper  
 130 100  
 95 98.8 0.0 198.0



#50 (-)  
 Toluene-d8  
 Concen: 49.31 ug/l  
 RT: 8.695 min Scan# 1248  
 Delta R.T. 0.006 min  
 Lab File: VX020303.D  
 Acq: 22 Dec 2020 15:06

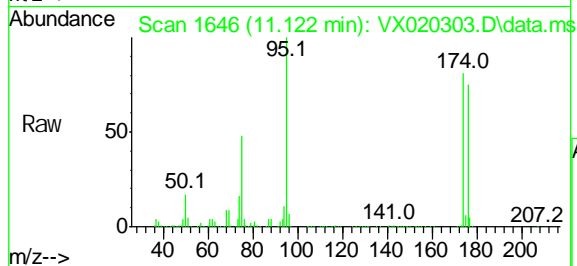
Tgt Ion: 98 Resp: 602227  
 Ion Ratio Lower Upper  
 98 100  
 100 65.1 51.9 77.9





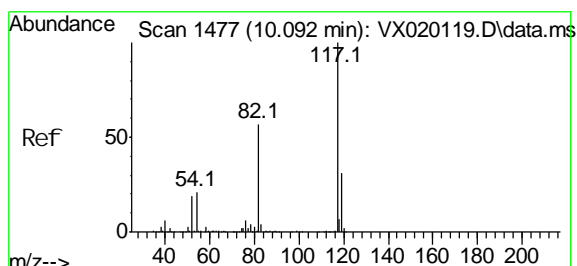
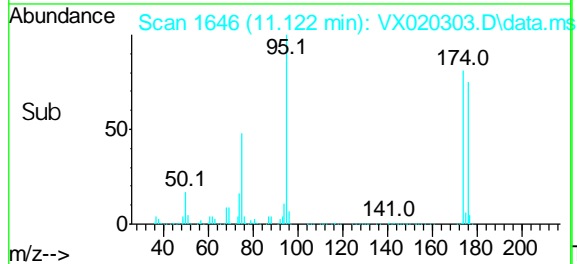
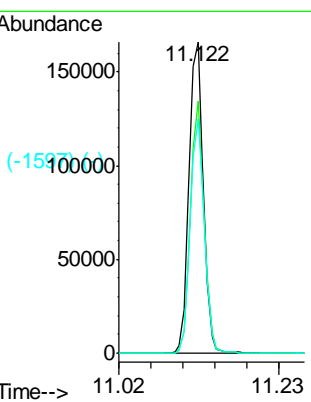
#639 (-)  
 4-Bromofluorobenzene  
 Concen: 45.66 ug/l  
 RT: 11.122 min Scan# 1646  
 Delta R.T. -0.000 min  
 Lab File: VX020303.D  
 Acq: 22 Dec 2020 15:06

**Instrument :**  
 MSVOA\_X  
**ClientSampled :**  
 TT101D1-20201211DL

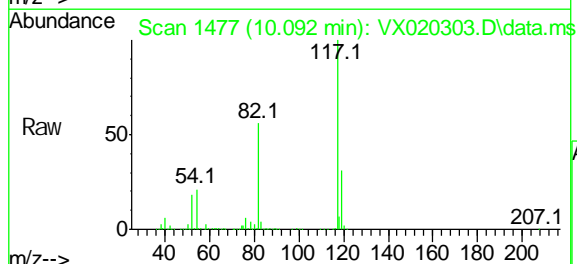


Tgt Ion: 95 Resp: 213426  
 Ion Ratio Lower Upper

95	100		
174	77.9	0.0	154.6
176	74.3	0.0	155.8

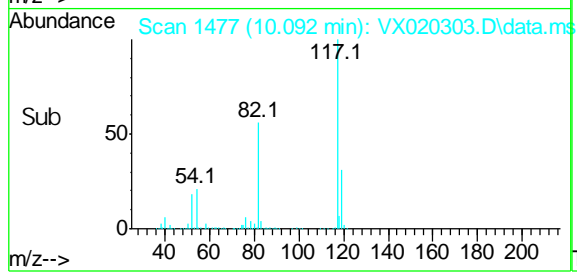
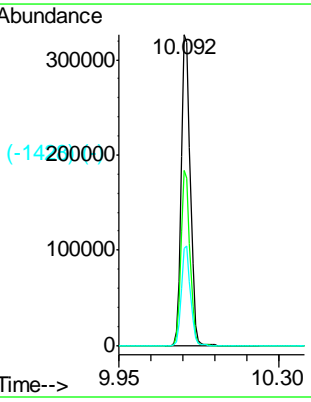


#647 (-)  
 Chlorobenzene-d5  
 Concen: 50.00 ug/l  
 RT: 10.092 min Scan# 1477  
 Delta R.T. -0.001 min  
 Lab File: VX020303.D  
 Acq: 22 Dec 2020 15:06

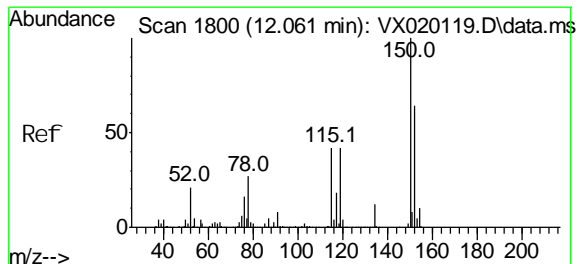


Tgt Ion: 117 Resp: 458868  
 Ion Ratio Lower Upper

117	100		
82	56.4	47.4	71.2
119	31.0	26.6	39.8

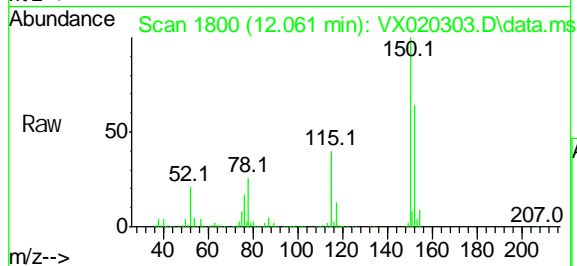






1,4-Dichlorobenzene-d4  
 Concn: 50.00 ug/l  
 RT: 12.061 min Scan# 1800  
 Delta R.T. -0.000 min  
 Lab File: VX020303.D  
 Acq: 22 Dec 2020 15:06

**Instrument :**  
 MSVOA\_X  
**ClientSampled :**  
 TT101D1-20201211DL



Tgt Ion: 152 Resp: 196997

Ion Ratio	Lower	Upper
152	100	
115	61.0	41.1 123.3
150	156.5	0.0 349.0

