

Data Path : Z:\voasrv\HPCHEM1\MSVOA\_X\Data\VX122324\  
 Data File : VX044479.D  
 Acq On : 23 Dec 2024 14:52  
 Operator : JC/MD  
 Sample : P5374-01  
 Misc : 5.0mL/MSVOA\_X/WATER  
 ALS Vial : 15 Sample Multiplier: 1

Instrument :  
 MSVOA\_X  
 ClientSampleId :

Quant Time: Dec 23 21:57:56 2024  
 Quant Method : Z:\voasrv\HPCHEM1\MSVOA\_X\Method\82X121124W.M  
 Quant Title : SW846 8260  
 QLast Update : Thu Dec 12 04:28:14 2024  
 Response via : Initial Calibration

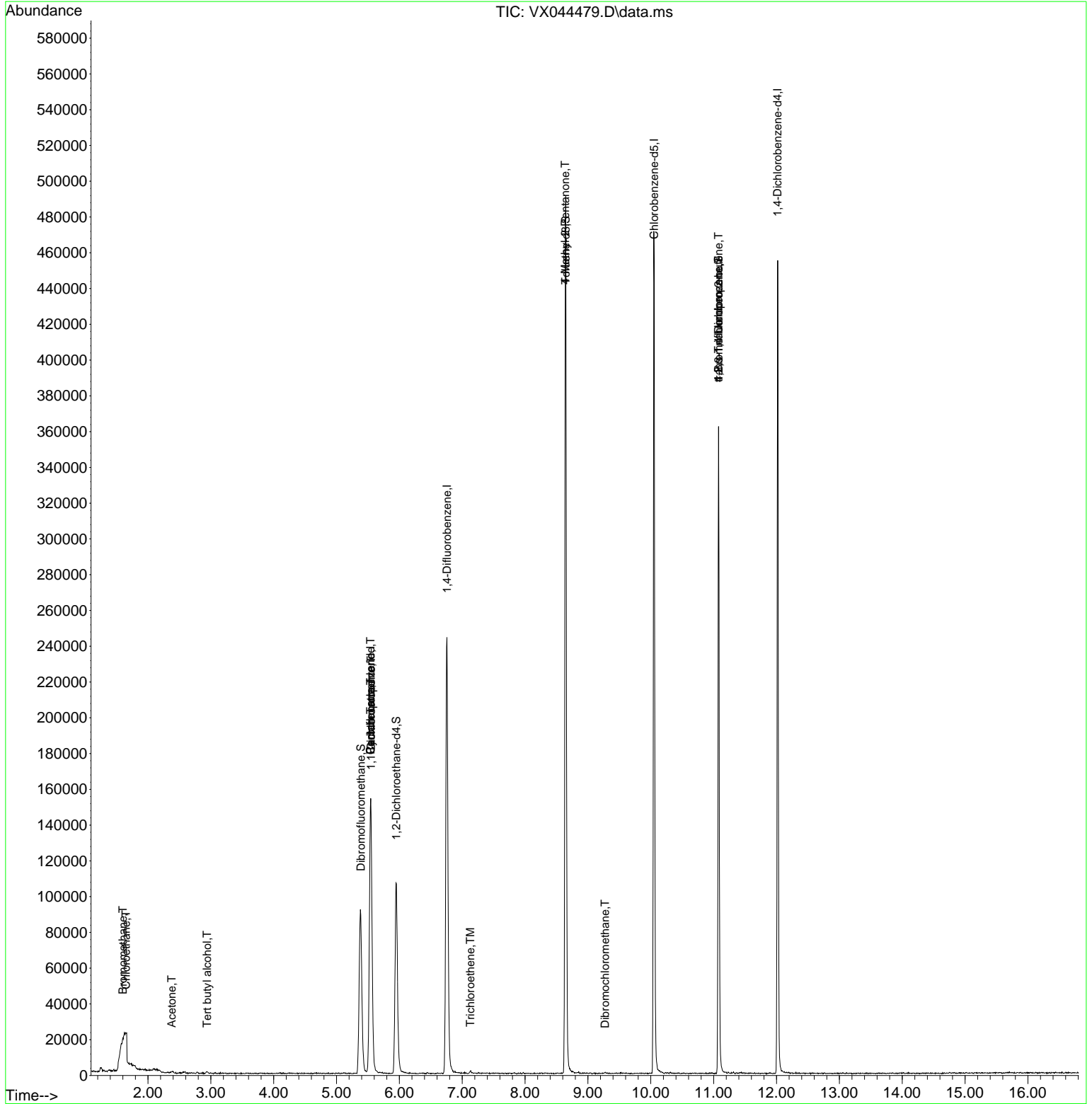
Compound	R.T.	QIon	Response	Conc	Units	Dev(Min)
-----						
Internal Standards						
1) Pentafluorobenzene	5.544	168	144905	50.000	ug/l	0.00
34) 1,4-Difluorobenzene	6.757	114	250665	50.000	ug/l	0.00
63) Chlorobenzene-d5	10.055	117	212481	50.000	ug/l	0.00
72) 1,4-Dichlorobenzene-d4	12.018	152	90686	50.000	ug/l	0.00
System Monitoring Compounds						
33) 1,2-Dichloroethane-d4	5.952	65	102878	40.493	ug/l	0.00
Spiked Amount	50.000	Range 74 - 125	Recovery =	80.980%		
35) Dibromofluoromethane	5.385	113	80545	46.395	ug/l	0.00
Spiked Amount	50.000	Range 75 - 124	Recovery =	92.780%		
50) Toluene-d8	8.647	98	292781	49.988	ug/l	0.00
Spiked Amount	50.000	Range 86 - 113	Recovery =	99.980%		
62) 4-Bromofluorobenzene	11.079	95	93540	45.705	ug/l	0.00
Spiked Amount	50.000	Range 77 - 121	Recovery =	91.420%		
Target Compounds						
					Qvalue	
5) Bromomethane	1.599	94	389	0.246	ug/l #	34
6) Chloroethane	1.648	64	318	0.229	ug/l #	85
11) Tert butyl alcohol	2.940	59	408	1.139	ug/l #	71
16) Acetone	2.380	43	824	0.796	ug/l	90
31) Cyclohexane	5.544	56	3366	1.228	ug/l #	39
36) 1,1-Dichloropropene	5.550	75	11942	5.321	ug/l #	51
38) Carbon Tetrachloride	5.544	117	15815	6.546	ug/l #	17
44) Trichloroethene	7.129	130	395	0.232	ug/l	81
51) 4-Methyl-2-Pentanone	8.641	43	1319	0.473	ug/l #	1
60) Dibromochloromethane	9.275	129	61	1.266	ug/l #	11
76) 1,2,3-Trichloropropane	11.079	75	51350	25.361	ug/l #	36
81) trans-1,4-Dichloro-2-b...	11.079	75	51350	70.141	ug/l #	4
-----						

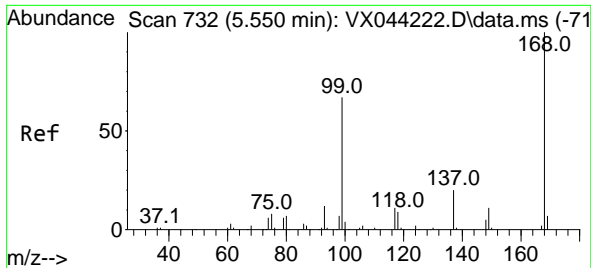
(#) = qualifier out of range (m) = manual integration (+) = signals summed

Data Path : Z:\voasrv\HPCHEM1\MSVOA\_X\Data\VX122324\  
 Data File : VX044479.D  
 Acq On : 23 Dec 2024 14:52  
 Operator : JC/MD  
 Sample : P5374-01  
 Misc : 5.0mL/MSVOA\_X/WATER  
 ALS Vial : 15 Sample Multiplier: 1

Instrument :  
 MSVOA\_X  
 ClientSampleId :

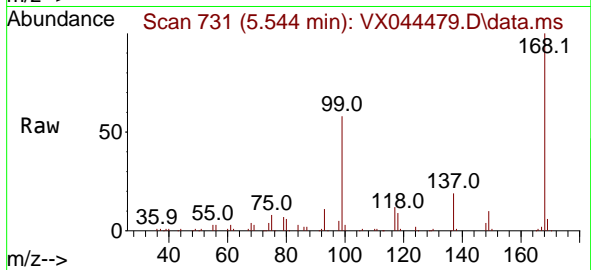
Quant Time: Dec 23 21:57:56 2024  
 Quant Method : Z:\voasrv\HPCHEM1\MSVOA\_X\Method\82X121124W.M  
 Quant Title : SW846 8260  
 QLast Update : Thu Dec 12 04:28:14 2024  
 Response via : Initial Calibration



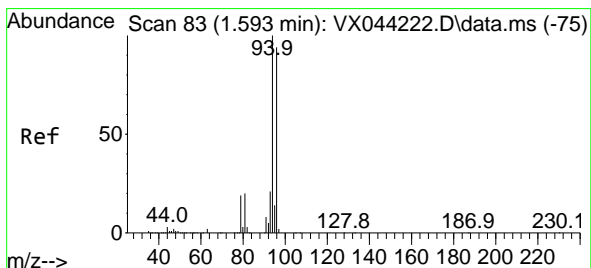
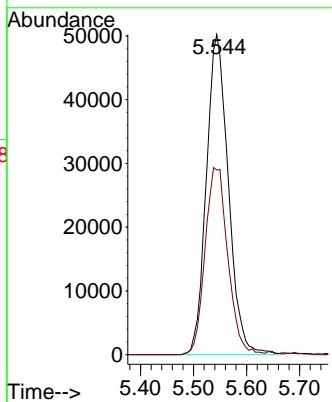
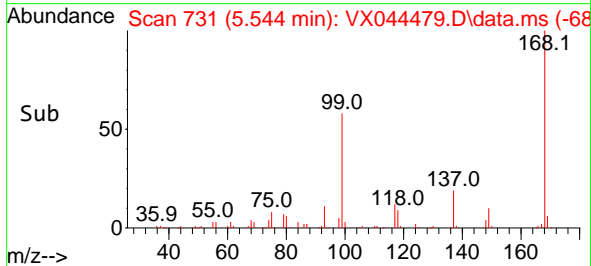


#1  
 Pentafluorobenzene  
 Concen: 50.000 ug/l  
 RT: 5.544 min Scan# 71  
 Delta R.T. -0.006 min  
 Lab File: VX044479.D  
 Acq: 23 Dec 2024 14:52

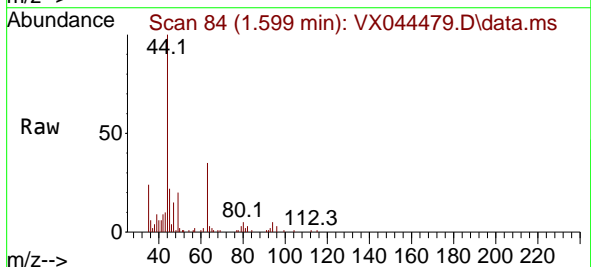
Instrument :  
 MSVOA\_X  
 ClientSampleId :



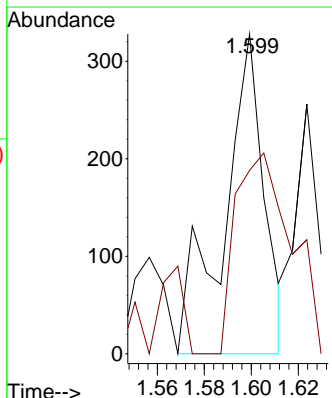
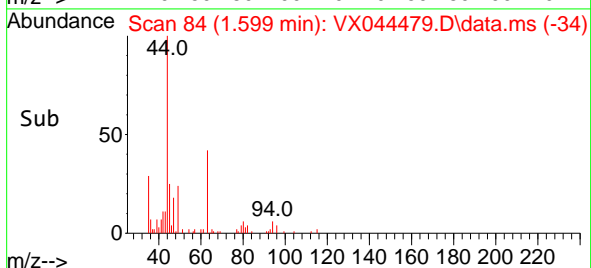
Tgt Ion:168 Resp: 144905  
 Ion Ratio Lower Upper  
 168 100  
 99 57.7 53.4 80.0

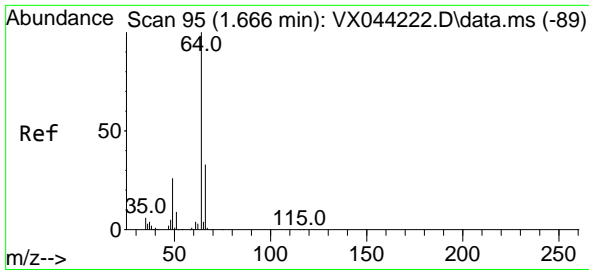


#5  
 Bromomethane  
 Concen: 0.246 ug/l  
 RT: 1.599 min Scan# 84  
 Delta R.T. 0.006 min  
 Lab File: VX044479.D  
 Acq: 23 Dec 2024 14:52



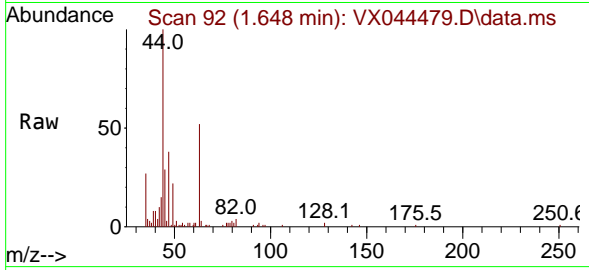
Tgt Ion: 94 Resp: 389  
 Ion Ratio Lower Upper  
 94 100  
 96 29.9 74.9 112.3#



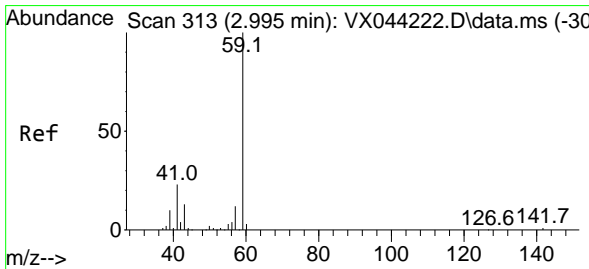
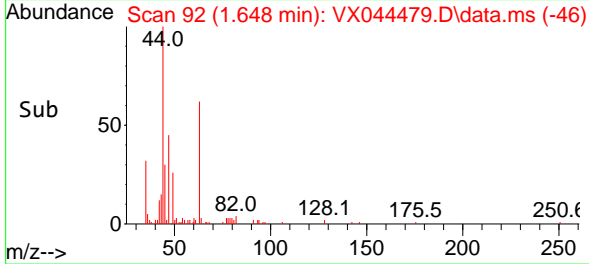
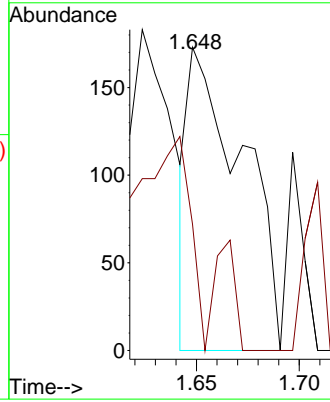


#6  
 Chloroethane  
 Concen: 0.229 ug/l  
 RT: 1.648 min Scan# 91  
 Delta R.T. -0.018 min  
 Lab File: VX044479.D  
 Acq: 23 Dec 2024 14:52

Instrument :  
 MSVOA\_X  
 ClientSampleId :

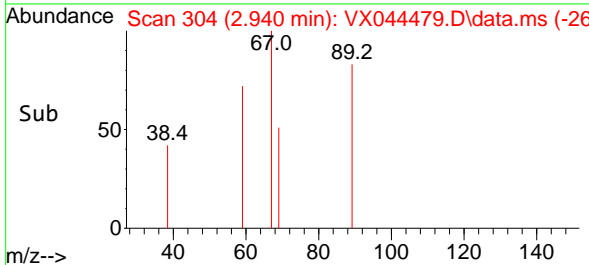
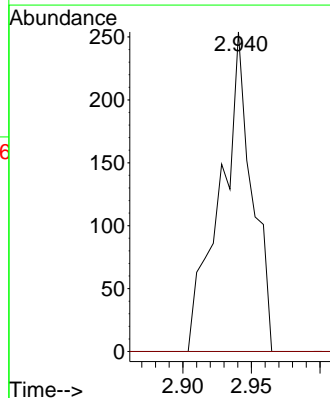
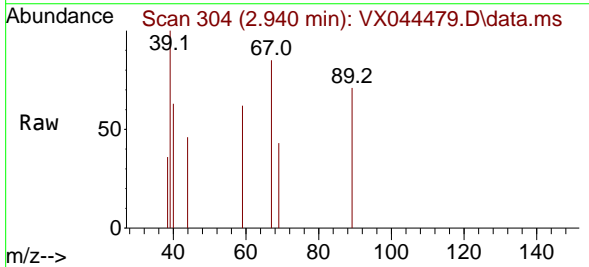


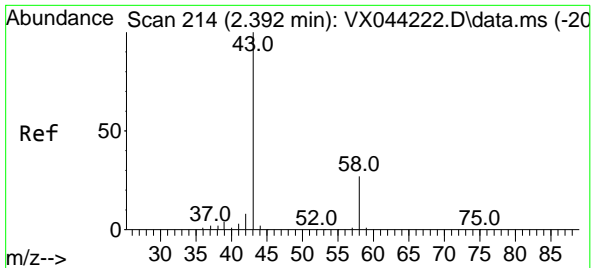
Tgt Ion: 64 Resp: 318  
 Ion Ratio Lower Upper  
 64 100  
 66 41.6 26.6 39.8#



#11  
 Tert butyl alcohol  
 Concen: 1.139 ug/l  
 RT: 2.940 min Scan# 304  
 Delta R.T. -0.055 min  
 Lab File: VX044479.D  
 Acq: 23 Dec 2024 14:52

Tgt Ion: 59 Resp: 408  
 Ion Ratio Lower Upper  
 59 100  
 57 0.0 8.8 13.2#

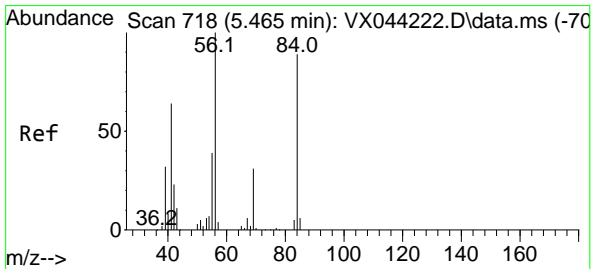
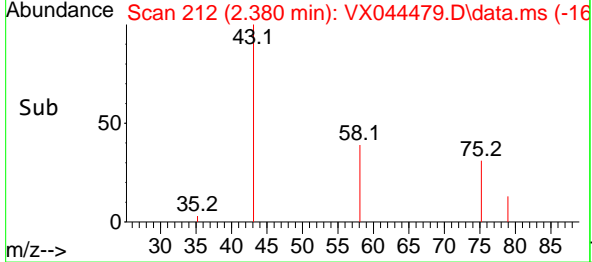
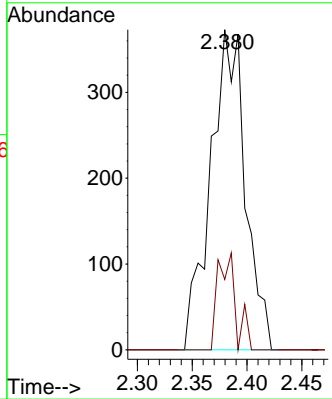
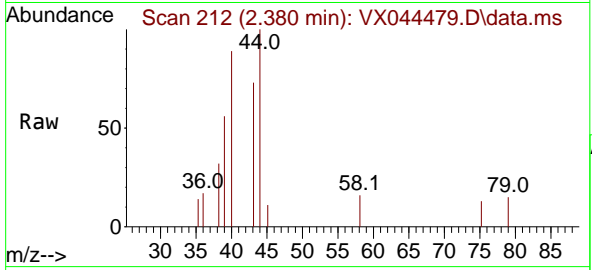




#16  
 Acetone  
 Concen: 0.796 ug/l  
 RT: 2.380 min Scan# 214  
 Delta R.T. -0.012 min  
 Lab File: VX044479.D  
 Acq: 23 Dec 2024 14:52

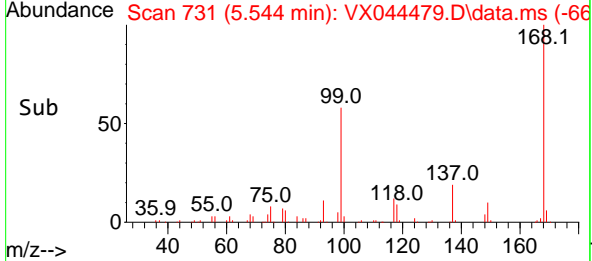
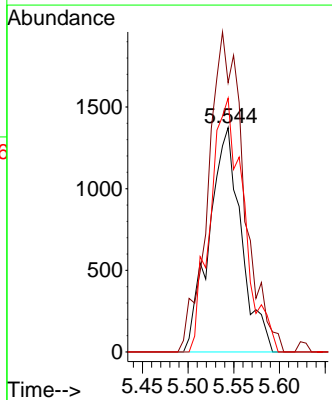
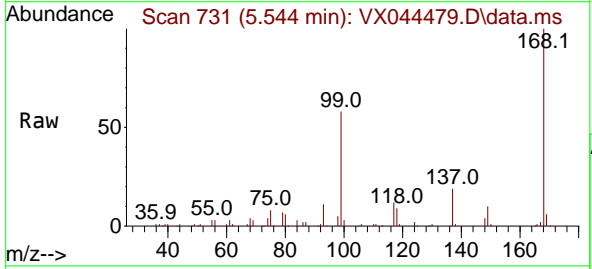
Instrument : MSVOA\_X  
 ClientSampleId :

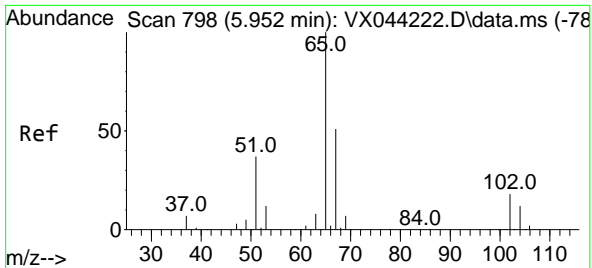
Tgt Ion	Resp	Lower	Upper
43	100		
58	22.0	21.6	32.4



#31  
 Cyclohexane  
 Concen: 1.228 ug/l  
 RT: 5.544 min Scan# 731  
 Delta R.T. 0.079 min  
 Lab File: VX044479.D  
 Acq: 23 Dec 2024 14:52

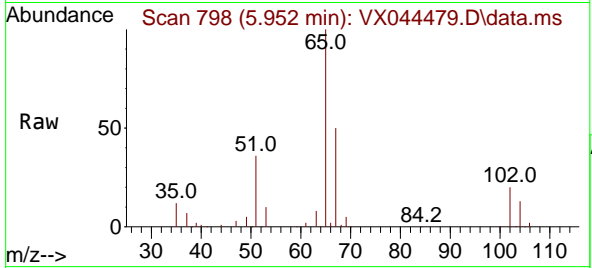
Tgt Ion	Resp	Lower	Upper
56	100		
69	120.0	24.7	37.1#
84	113.1	71.0	106.6#



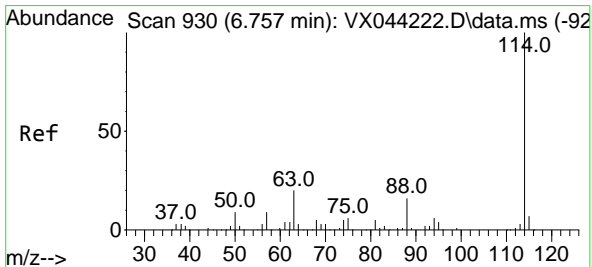
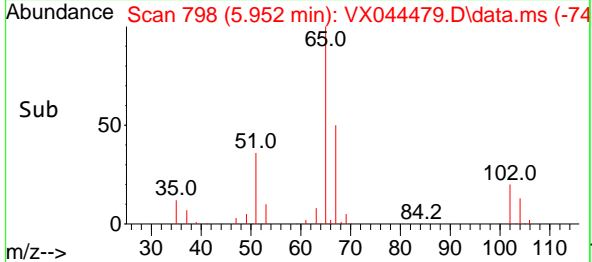
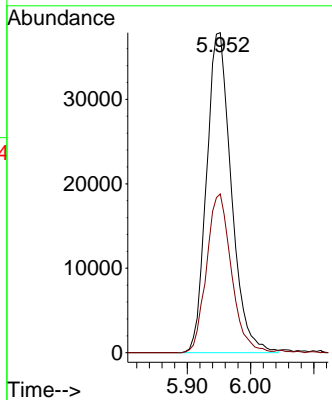


#33  
 1,2-Dichloroethane-d4  
 Concen: 40.493 ug/l  
 RT: 5.952 min Scan# 798  
 Delta R.T. -0.000 min  
 Lab File: VX044479.D  
 Acq: 23 Dec 2024 14:52

Instrument : MSVOA\_X  
 ClientSampleId :

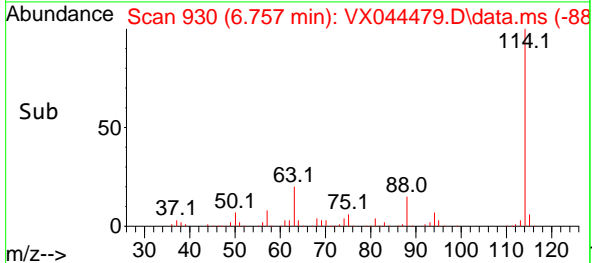
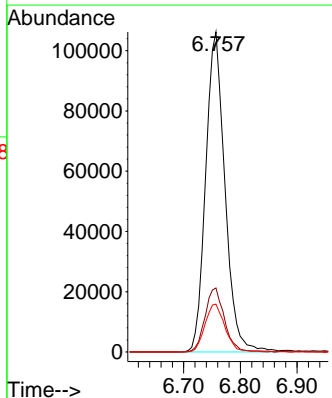
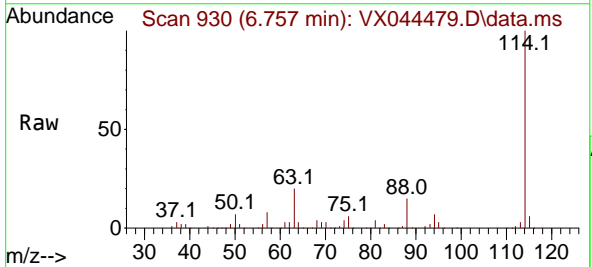


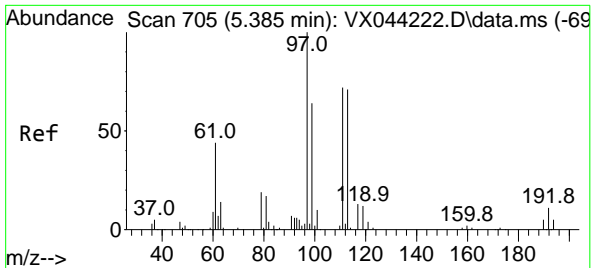
Tgt Ion: 65 Resp: 102878  
 Ion Ratio Lower Upper  
 65 100  
 67 49.8 0.0 101.6



#34  
 1,4-Difluorobenzene  
 Concen: 50.000 ug/l  
 RT: 6.757 min Scan# 930  
 Delta R.T. -0.000 min  
 Lab File: VX044479.D  
 Acq: 23 Dec 2024 14:52

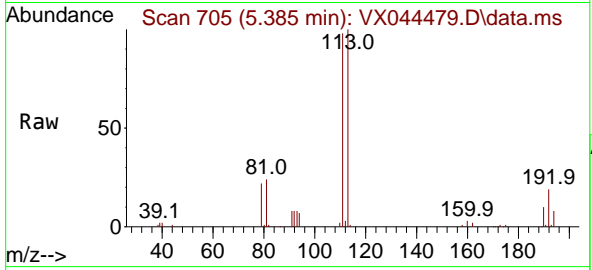
Tgt Ion: 114 Resp: 250665  
 Ion Ratio Lower Upper  
 114 100  
 63 20.0 0.0 40.6  
 88 14.9 0.0 31.8



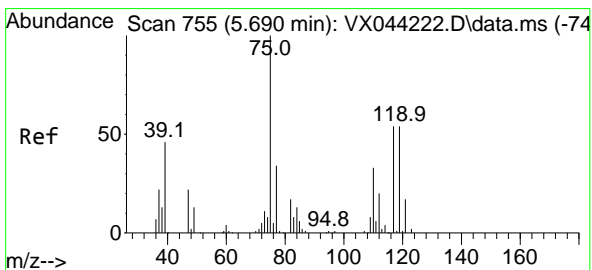
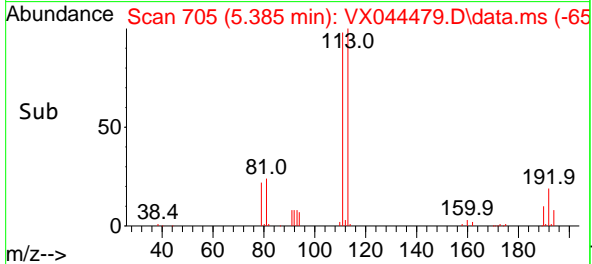
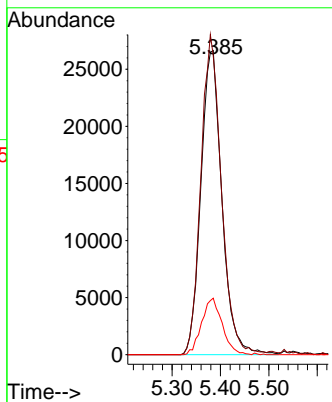


#35  
 Dibromofluoromethane  
 Concen: 46.395 ug/l  
 RT: 5.385 min Scan# 705  
 Delta R.T. -0.000 min  
 Lab File: VX044479.D  
 Acq: 23 Dec 2024 14:52

Instrument : MSVOA\_X  
 ClientSampleId :

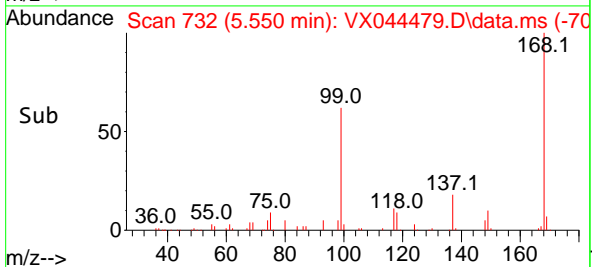
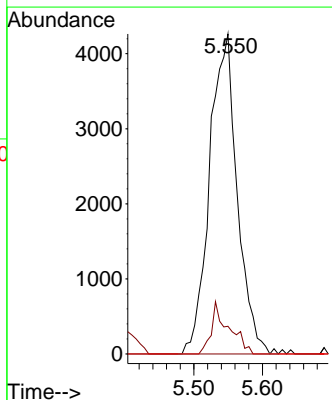
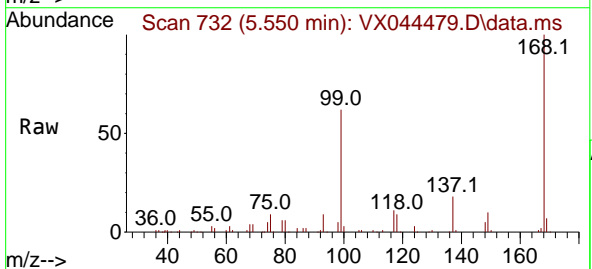


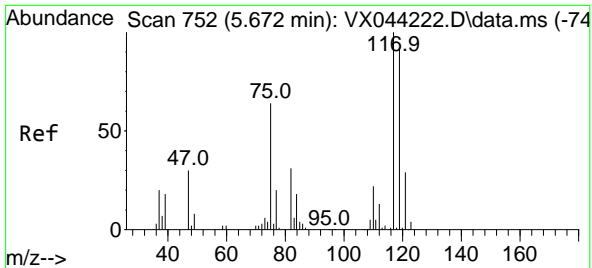
Tgt Ion:113	Resp:	80545
Ion Ratio	Lower	Upper
113	100	
111	102.5	80.4 120.6
192	18.1	13.3 19.9



#36  
 1,1-Dichloropropene  
 Concen: 5.321 ug/l  
 RT: 5.550 min Scan# 732  
 Delta R.T. -0.140 min  
 Lab File: VX044479.D  
 Acq: 23 Dec 2024 14:52

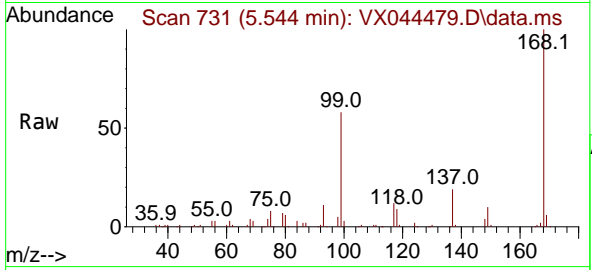
Tgt Ion:75	Resp:	11942
Ion Ratio	Lower	Upper
75	100	
110	10.4	17.3 51.7#
77	0.0	25.4 38.0#



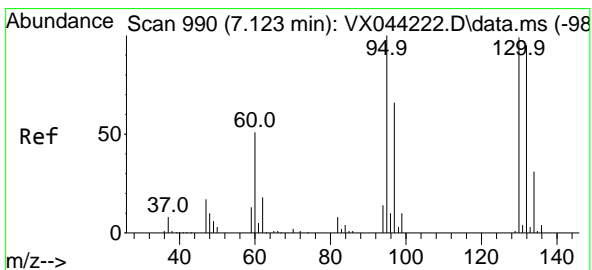
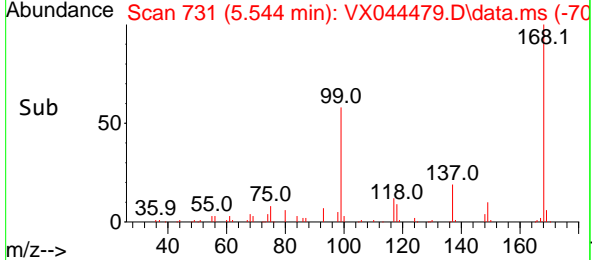
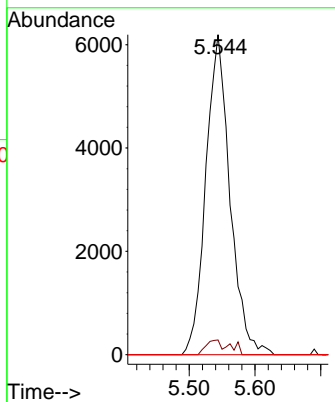


#38  
 Carbon Tetrachloride  
 Concen: 6.546 ug/l  
 RT: 5.544 min Scan# 711  
 Delta R.T. -0.128 min  
 Lab File: VX044479.D  
 Acq: 23 Dec 2024 14:52

Instrument : MSVOA\_X  
 ClientSampleId :

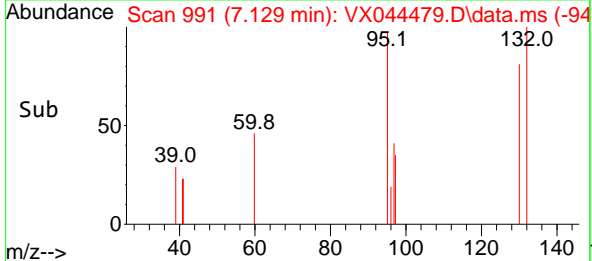
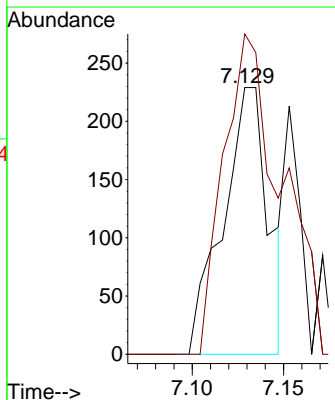
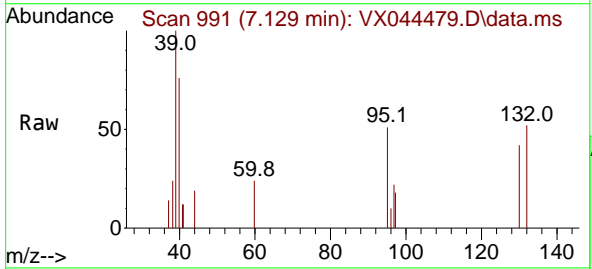


Tgt Ion:117 Resp: 15815  
 Ion Ratio Lower Upper  
 117 100  
 119 4.6 74.2 111.4#  
 121 0.0 23.0 34.6#

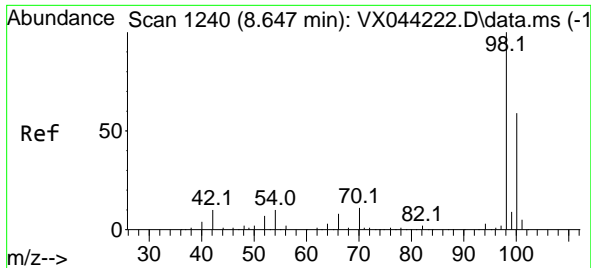


#44  
 Trichloroethene  
 Concen: 0.232 ug/l  
 RT: 7.129 min Scan# 991  
 Delta R.T. 0.006 min  
 Lab File: VX044479.D  
 Acq: 23 Dec 2024 14:52

Tgt Ion:130 Resp: 395  
 Ion Ratio Lower Upper  
 130 100  
 95 120.1 0.0 201.4



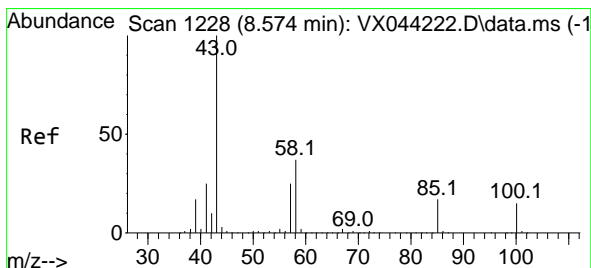
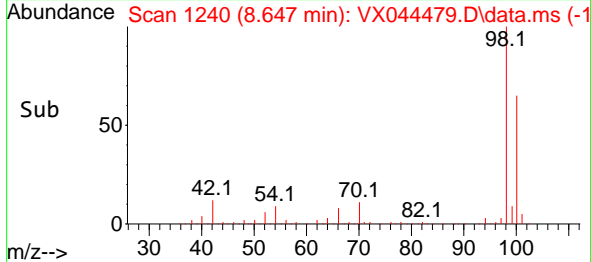
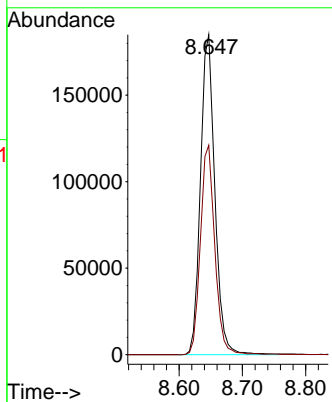
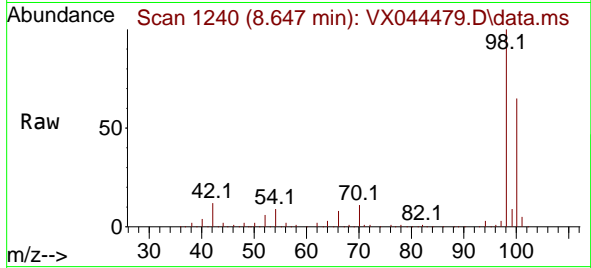




#50  
 Toluene-d8  
 Concen: 49.988 ug/l  
 RT: 8.647 min Scan# 11  
 Delta R.T. -0.000 min  
 Lab File: VX044479.D  
 Acq: 23 Dec 2024 14:52

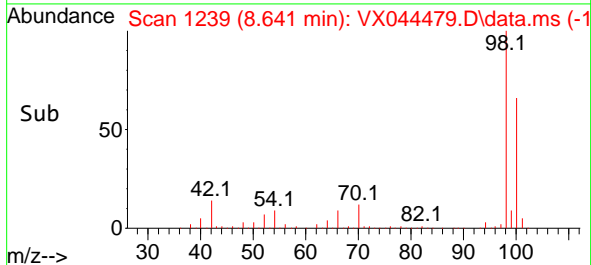
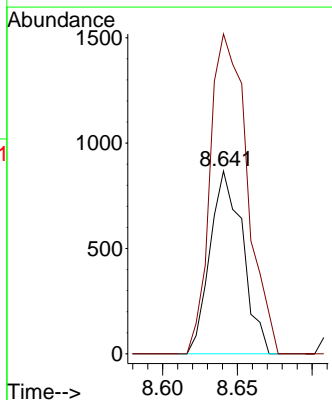
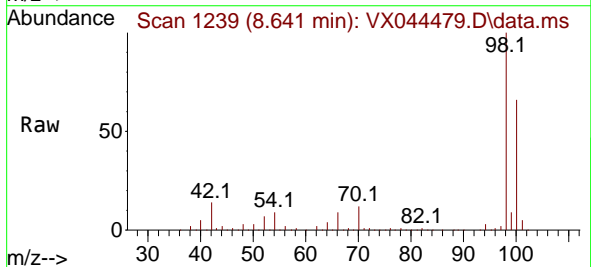
Instrument :  
 MSVOA\_X  
 ClientSampleId :

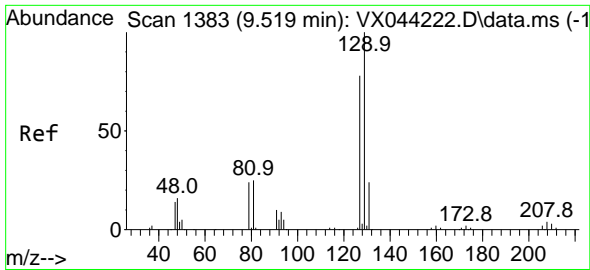
Tgt Ion: 98 Resp: 292781  
 Ion Ratio Lower Upper  
 98 100  
 100 65.6 51.5 77.3



#51  
 4-Methyl-2-Pentanone  
 Concen: 0.473 ug/l  
 RT: 8.641 min Scan# 1239  
 Delta R.T. 0.067 min  
 Lab File: VX044479.D  
 Acq: 23 Dec 2024 14:52

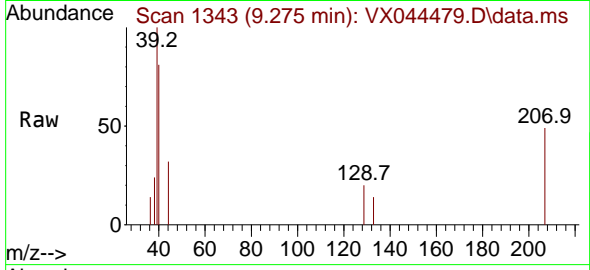
Tgt Ion: 43 Resp: 1319  
 Ion Ratio Lower Upper  
 43 100  
 58 198.2 29.4 44.0#



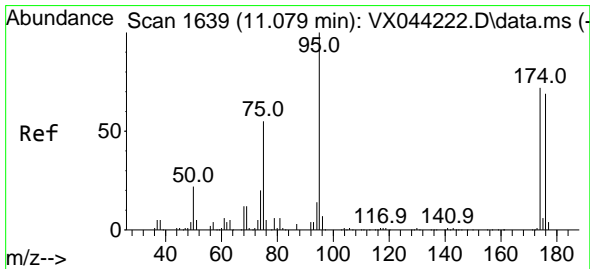
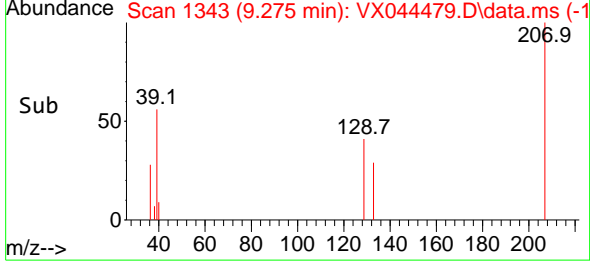
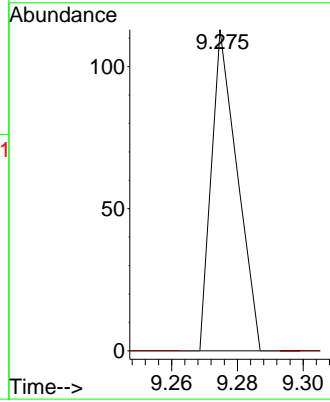


#60  
 Dibromochloromethane  
 Concen: 1.266 ug/l  
 RT: 9.275 min Scan# 11  
 Delta R.T. -0.244 min  
 Lab File: VX044479.D  
 Acq: 23 Dec 2024 14:52

Instrument : MSVOA\_X  
 ClientSampleId :

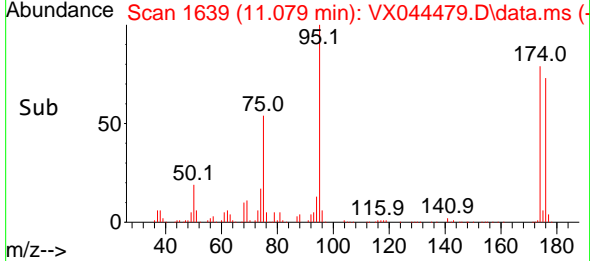
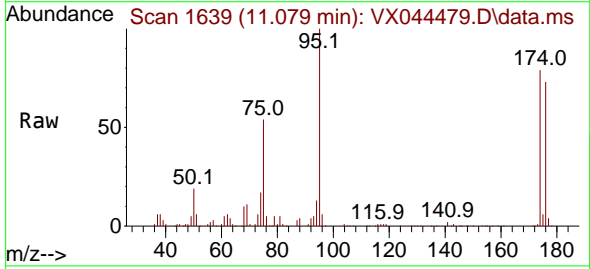
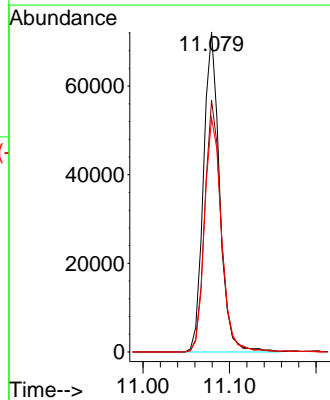


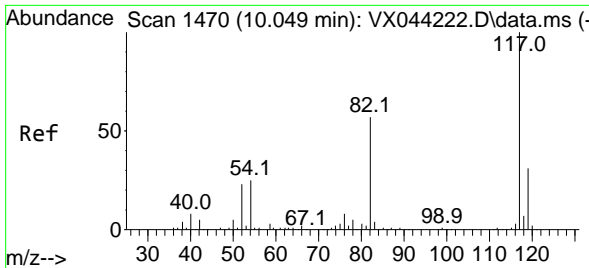
Tgt Ion:129 Resp: 61  
 Ion Ratio Lower Upper  
 129 100  
 127 0.0 38.5 115.3#



#62  
 4-Bromofluorobenzene  
 Concen: 45.705 ug/l  
 RT: 11.079 min Scan# 1639  
 Delta R.T. -0.000 min  
 Lab File: VX044479.D  
 Acq: 23 Dec 2024 14:52

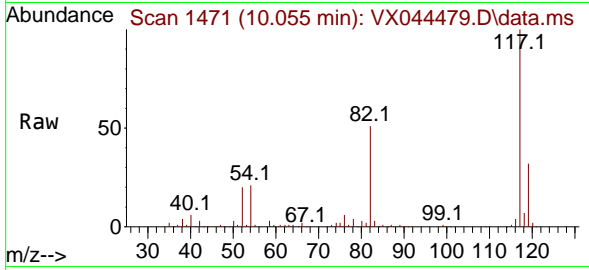
Tgt Ion: 95 Resp: 93540  
 Ion Ratio Lower Upper  
 95 100  
 174 79.6 0.0 145.8  
 176 77.0 0.0 137.8



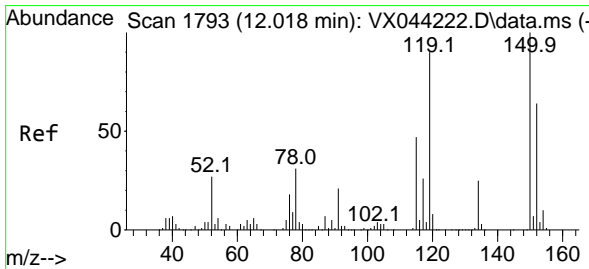
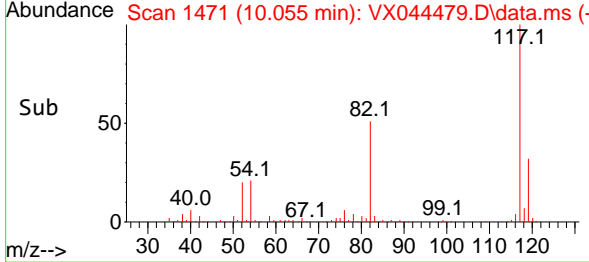
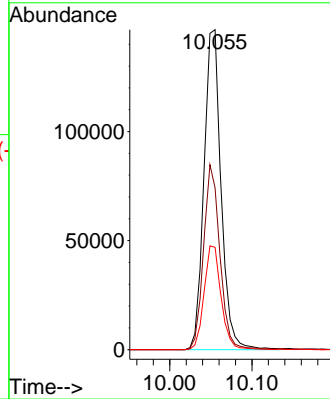


#63  
 Chlorobenzene-d5  
 Concen: 50.000 ug/l  
 RT: 10.055 min Scan# 1471  
 Delta R.T. 0.006 min  
 Lab File: VX044479.D  
 Acq: 23 Dec 2024 14:52

Instrument : MSVOA\_X  
 ClientSampleId :

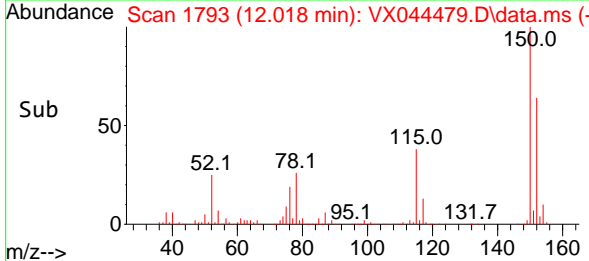
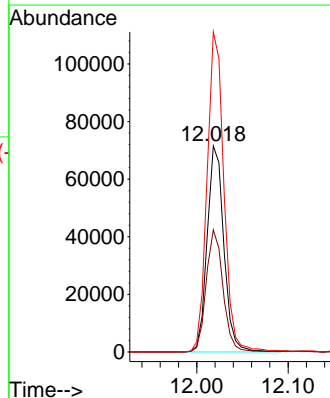
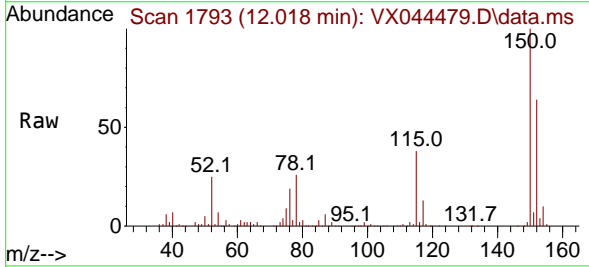


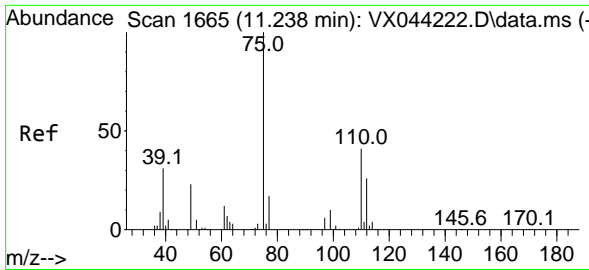
Tgt Ion:117 Resp: 212481  
 Ion Ratio Lower Upper  
 117 100  
 82 50.6 45.8 68.8  
 119 32.0 25.0 37.4



#72  
 1,4-Dichlorobenzene-d4  
 Concen: 50.000 ug/l  
 RT: 12.018 min Scan# 1793  
 Delta R.T. -0.000 min  
 Lab File: VX044479.D  
 Acq: 23 Dec 2024 14:52

Tgt Ion:152 Resp: 90686  
 Ion Ratio Lower Upper  
 152 100  
 115 59.6 44.5 133.3  
 150 156.3 0.0 353.8

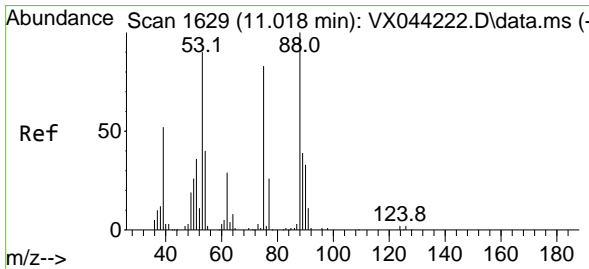
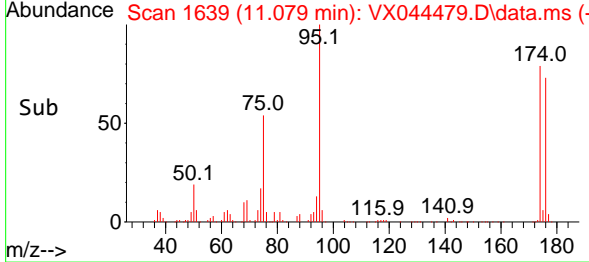
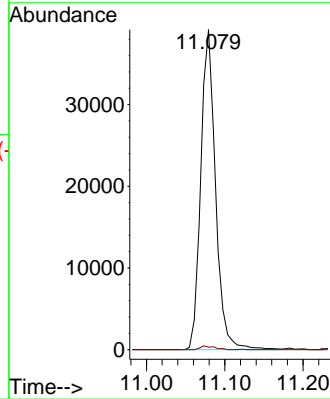
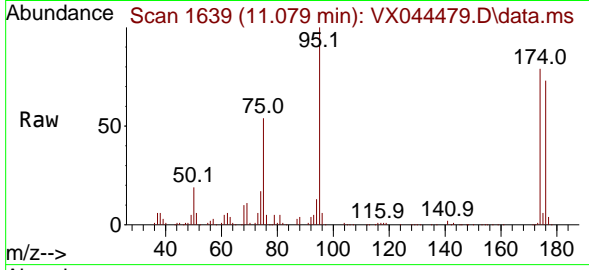




#76  
 1,2,3-Trichloropropane  
 Concen: 25.361 ug/l  
 RT: 11.079 min Scan# 1639  
 Delta R.T. -0.159 min  
 Lab File: VX044479.D  
 Acq: 23 Dec 2024 14:52

Instrument : MSVOA\_X  
 ClientSampleId :

Tgt Ion: 75 Resp: 51350  
 Ion Ratio Lower Upper  
 75 100  
 77 1.1 20.9 62.7#



#81  
 trans-1,4-Dichloro-2-butene  
 Concen: 70.141 ug/l  
 RT: 11.079 min Scan# 1639  
 Delta R.T. 0.061 min  
 Lab File: VX044479.D  
 Acq: 23 Dec 2024 14:52

Tgt Ion: 75 Resp: 51350  
 Ion Ratio Lower Upper  
 75 100  
 53 0.0 93.6 140.4#  
 89 0.0 37.3 55.9#

