

Data Path : Z:\VOASRV\HPCHEM1\MSVOA_X\DATA\VX122419\
 Data File : VX014238.D
 Acq On : 24 Dec 2019 12:32
 Operator : JC/SP
 Sample : K6377-06DL 10X
 Misc : 5.0mL/MSVOA_X/WATER
 ALS Vial : 8 Sample Multiplier: 1

Instrument :
 MSVOA_X
 ClientSampleID :
 MW-7DL

Quant Time: Dec 25 05:39:01 2019
 Quant Method : Z:\VOASRV\HPCHEM1\MSVOA_X\METHOD\82X121319W.M
 Quant Title : SW846 8260
 QLast Update : Tue Dec 17 03:01:07 2019
 Response via : Initial Calibration

Internal Standards	R.T.	QIon	Response	Conc	Units	Dev(Min)
1) Pentafluorobenzene	5.65	168	544573	50.00	ug/l	0.00
34) 1,4-Difluorobenzene	6.85	114	835516	50.00	ug/l	0.00
63) Chlorobenzene-d5	10.11	117	754090	50.00	ug/l	0.00
72) 1,4-Dichlorobenzene-d4	12.07	152	329287	50.00	ug/l	0.00

System Monitoring Compounds	R.T.	QIon	Response	Conc	Units	Dev(Min)
33) 1,2-Dichloroethane-d4	6.05	65	300253	48.65	ug/l	0.00
Spiked Amount				50.000		
Recovery				=	97.30%	
35) Dibromofluoromethane	5.48	113	251097	49.44	ug/l	0.00
Spiked Amount				50.000		
Recovery				=	98.88%	
50) Toluene-d8	8.71	98	993442	50.24	ug/l	0.00
Spiked Amount				50.000		
Recovery				=	100.48%	
62) 4-Bromofluorobenzene	11.14	95	329964	45.65	ug/l	0.00
Spiked Amount				50.000		
Recovery				=	91.30%	

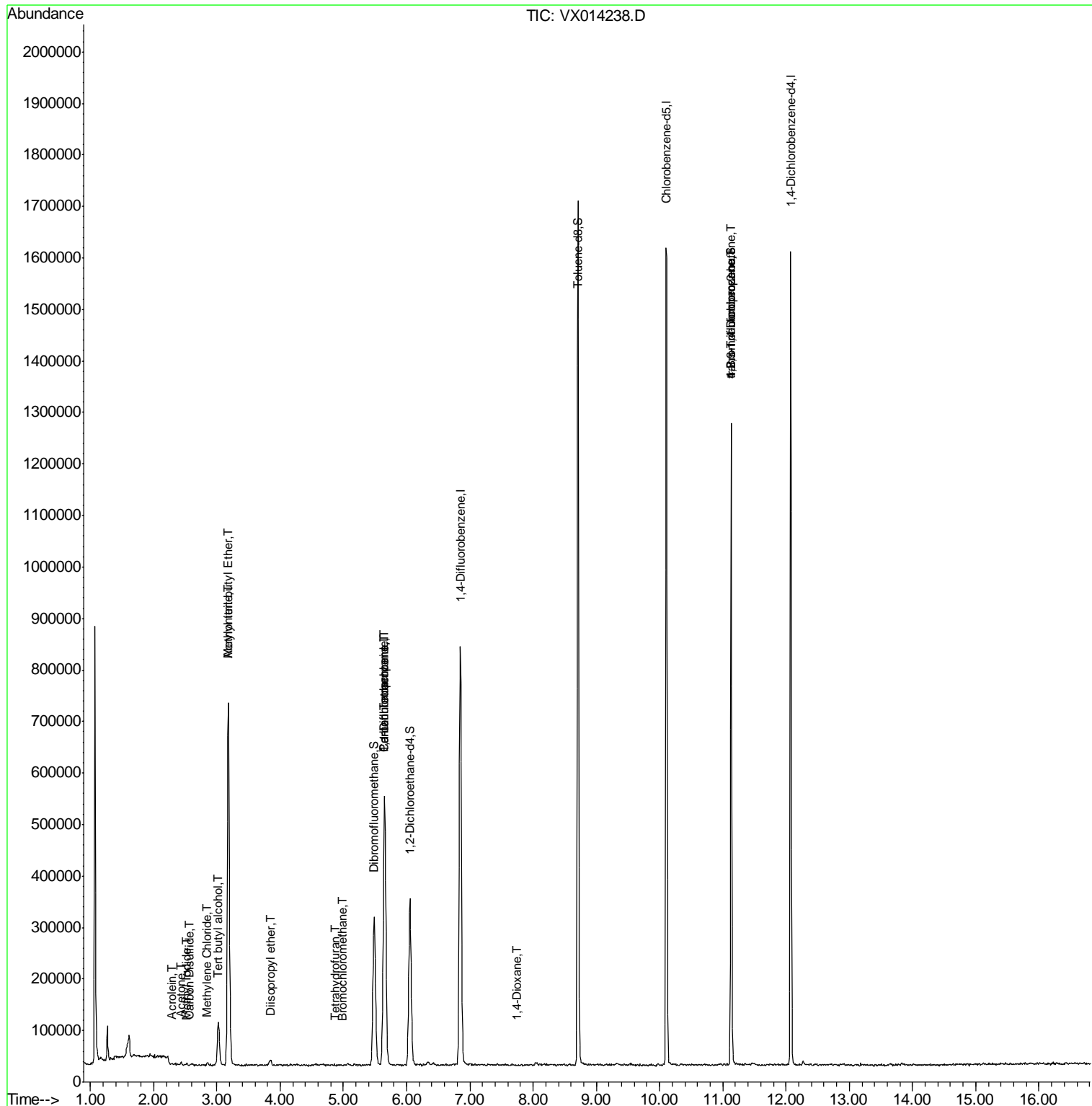
Target Compounds	R.T.	QIon	Response	Conc	Units	Qvalue
10) Methyl Iodide	2.51	142	1687	2.856	ug/l #	48
11) Tert butyl alcohol	3.02	59	98347	73.744	ug/l	99
13) Acrolein	2.29	56	397	0.520	ug/l #	14
15) Acrylonitrile	3.17	53	8705	2.797	ug/l #	40
16) Acetone	2.43	43	5610	1.400	ug/l	97
17) Carbon Disulfide	2.56	76	1591	0.858	ug/l #	84
19) Methyl tert-butyl Ether	3.18	73	780825	45.361	ug/l	98
20) Methylene Chloride	2.84	84	3120	0.494	ug/l #	79
22) Diisopropyl ether	3.84	45	11921	0.640	ug/l #	76
28) Bromochloromethane	5.00	49	460	0.568	ug/l #	71
29) Tetrahydrofuran	4.87	42	810	0.293	ug/l	97
36) 1,1-Dichloropropene	5.65	75	37375	4.875	ug/l #	50
38) Carbon Tetrachloride	5.65	117	48362	6.925	ug/l #	15
49) 1,4-Dioxane	7.74	88	256	1.834	ug/l #	1
76) 1,2,3-Trichloropropane	11.13	75	160629	22.469	ug/l #	39
81) trans-1,4-Dichloro-2-buten	11.13	75	160629	63.421	ug/l #	12

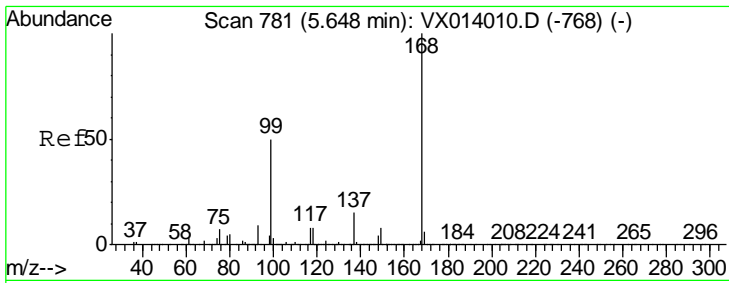
(#) = qualifier out of range (m) = manual integration (+) = signals summed

Data Path : Z:\VOASRV\HPCHEM1\MSVOA_X\DATA\VX122419\
 Data File : VX014238.D
 Acq On : 24 Dec 2019 12:32
 Operator : JC/SP
 Sample : K6377-06DL 10X
 Misc : 5.0mL/MSVOA_X/WATER
 ALS Vial : 8 Sample Multiplier: 1

Instrument :
 MSVOA_X
 Client Sampled :
 MW-7DL

Quant Time: Dec 25 05:39:01 2019
 Quant Method : Z:\VOASRV\HPCHEM1\MSVOA_X\METHOD\82X121319W.M
 Quant Title : SW846 8260
 QLast Update : Tue Dec 17 03:01:07 2019
 Response via : Initial Calibration

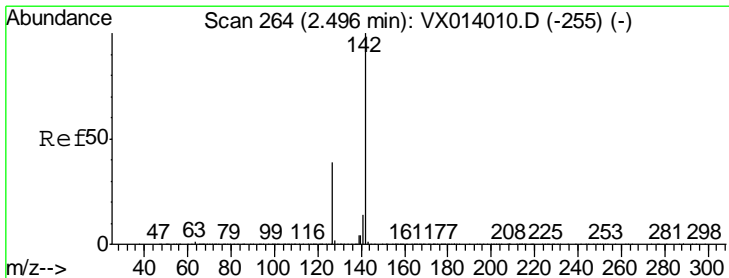
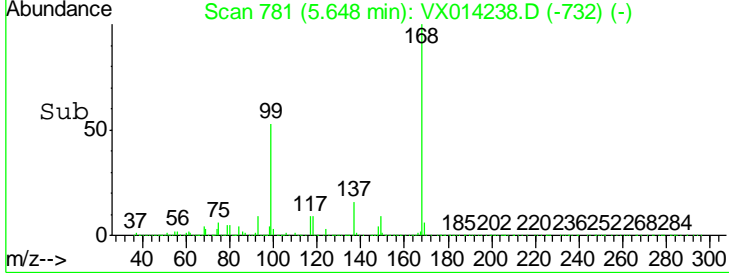
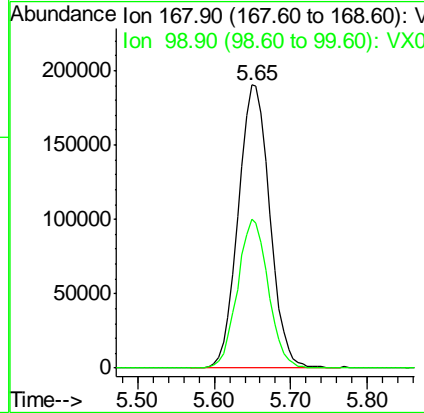
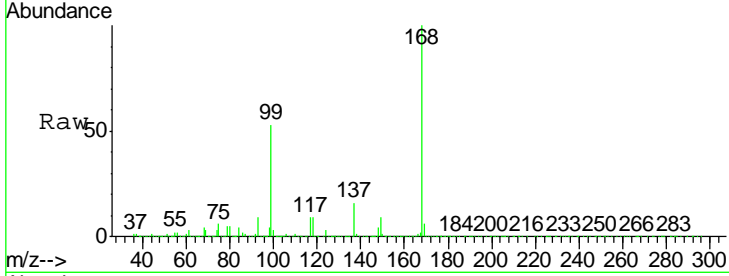




#1
 Pentafluorobenzene
 Concen: 50.000 ug/l
 RT: 5.65 min Scan# 781
 Delta R.T. 0.00 min
 Lab File: VX014238.D
 Acq: 24 Dec 2019 12:32

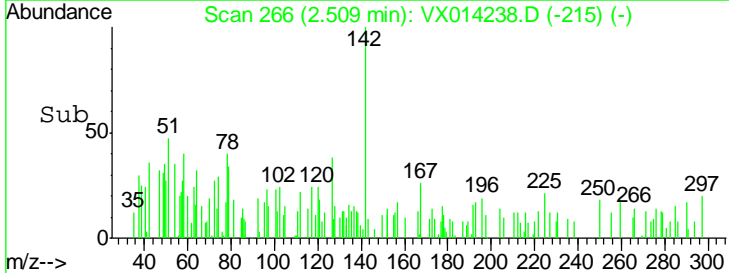
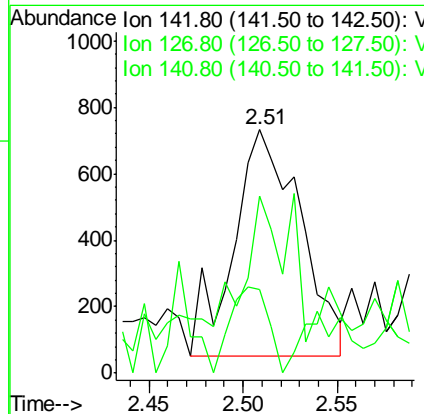
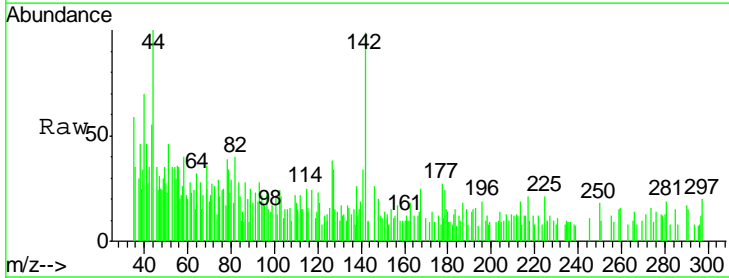
Instrument :
 MSVOA_X
ClientSampled :
 MW-7DL

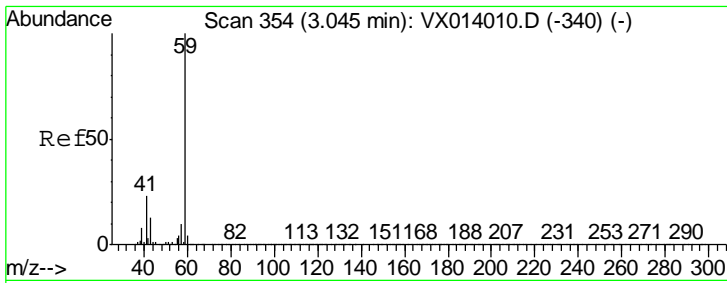
Tgt Ion	Resp	Lower	Upper
168	100		
99	52.7	40.3	60.5



#10
 Methyl Iodide
 Concen: 2.856 ug/l
 RT: 2.51 min Scan# 266
 Delta R.T. 0.01 min
 Lab File: VX014238.D
 Acq: 24 Dec 2019 12:32

Tgt Ion	Resp	Lower	Upper
142	100		
127	0.0	31.6	47.4#
141	21.3	11.6	17.4#

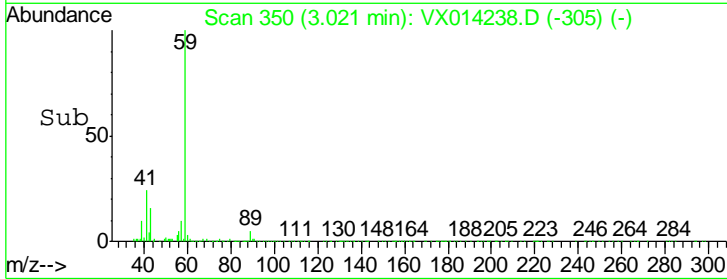
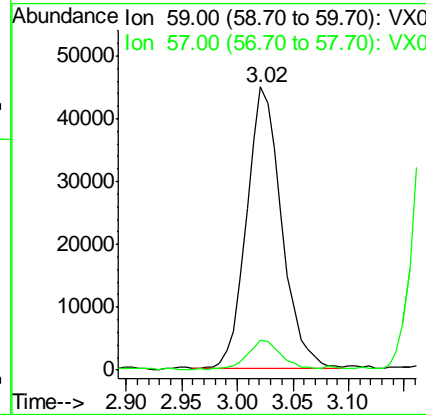
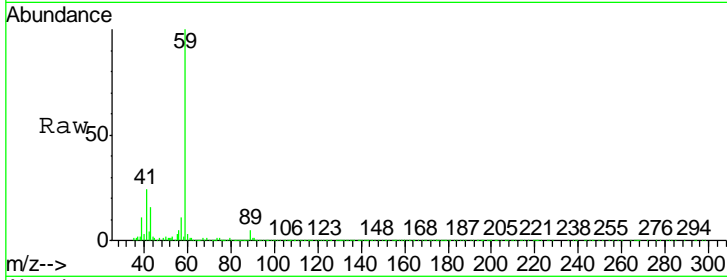




#11
 Tert butyl alcohol
 Concen: 73.744 ug/l
 RT: 3.02 min Scan# 350
 Delta R.T. -0.02 min
 Lab File: VX014238.D
 Acq: 24 Dec 2019 12:32

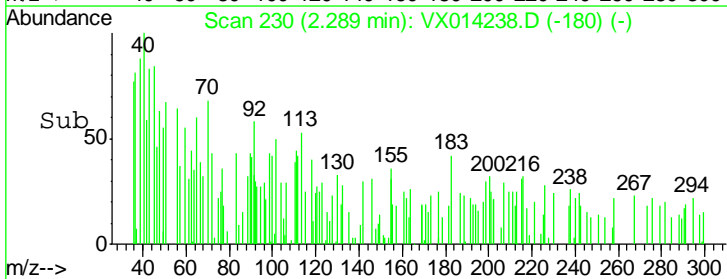
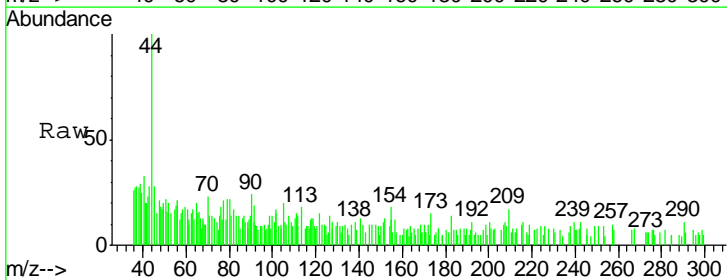
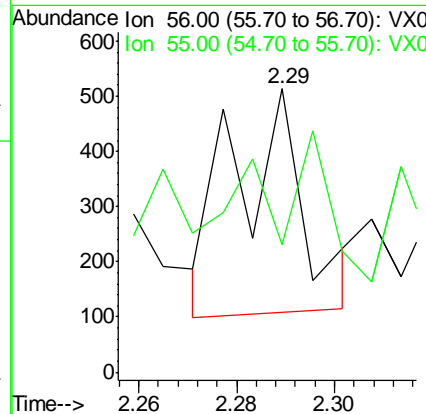
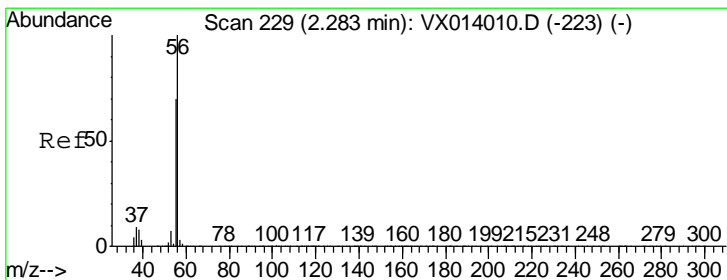
Instrument : MSVOA_X
 ClientSampled : MW-7DL

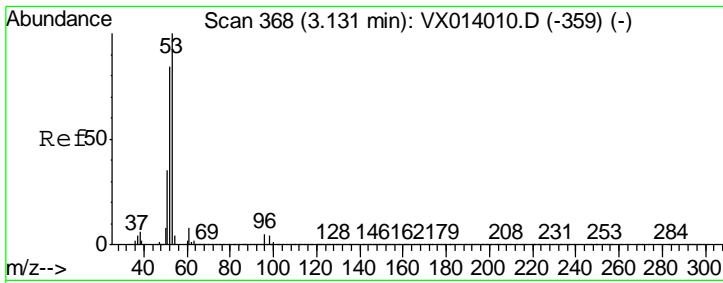
Tgt Ion: 59 Resp: 98347
 Ion Ratio Lower Upper
 59 100
 57 11.0 8.4 12.6



#13
 Acrolein
 Concen: 0.520 ug/l
 RT: 2.29 min Scan# 230
 Delta R.T. 0.01 min
 Lab File: VX014238.D
 Acq: 24 Dec 2019 12:32

Tgt Ion: 56 Resp: 397
 Ion Ratio Lower Upper
 56 100
 55 0.0 56.9 85.3#

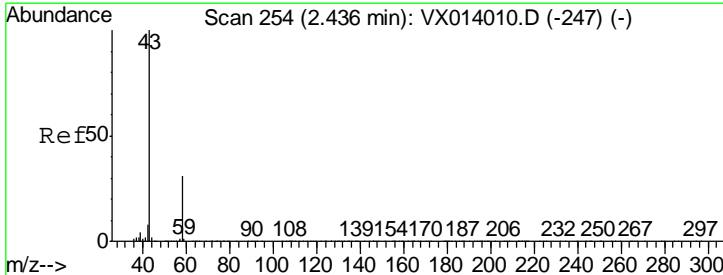
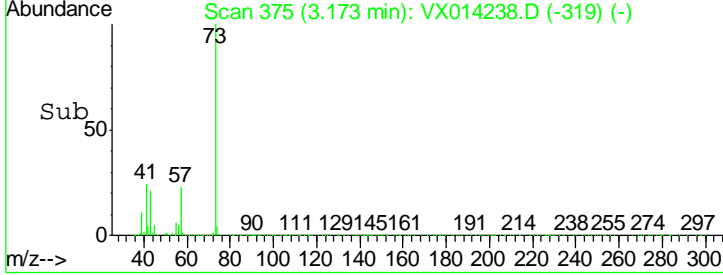
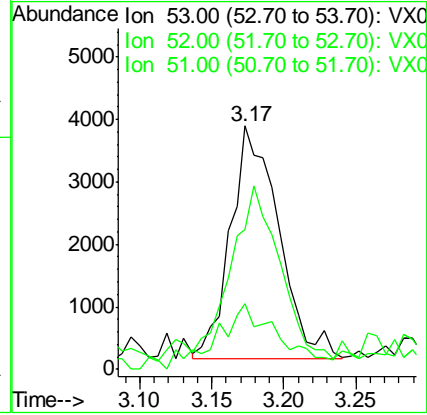
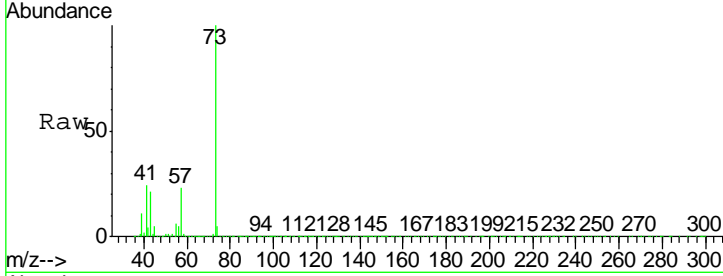




#15
 Acrylonitrile
 Concen: 2.797 ug/l
 RT: 3.17 min Scan# 375
 Delta R.T. 0.04 min
 Lab File: VX014238.D
 Acq: 24 Dec 2019 12:32

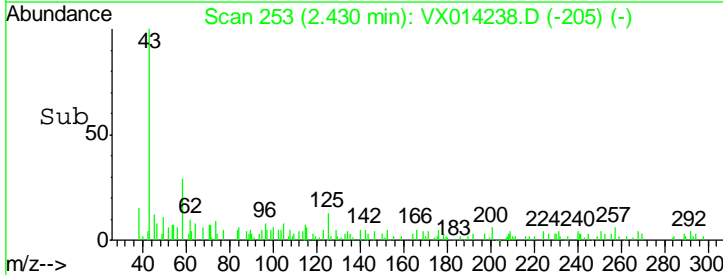
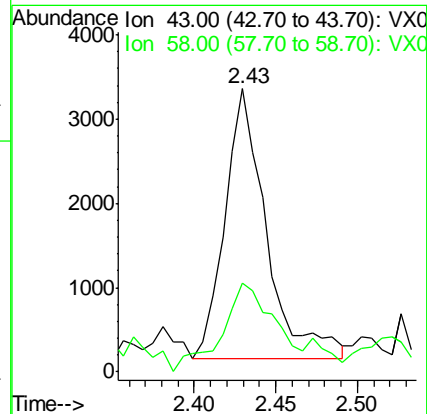
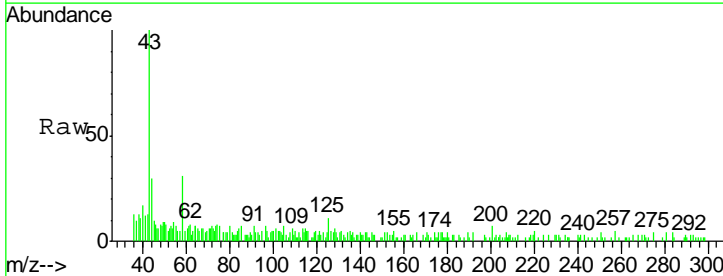
Instrument :
 MSVOA_X
 ClientSampled :
 MW-7DL

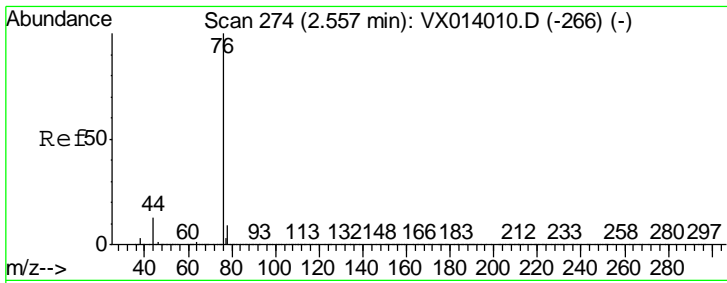
Tgt Ion	Resp	Lower	Upper
53	100		
52	36.8	66.5	99.7#
51	81.6	28.1	42.1#



#16
 Acetone
 Concen: 1.400 ug/l
 RT: 2.43 min Scan# 253
 Delta R.T. -0.01 min
 Lab File: VX014238.D
 Acq: 24 Dec 2019 12:32

Tgt Ion	Resp	Lower	Upper
43	100		
58	29.3	24.9	37.3

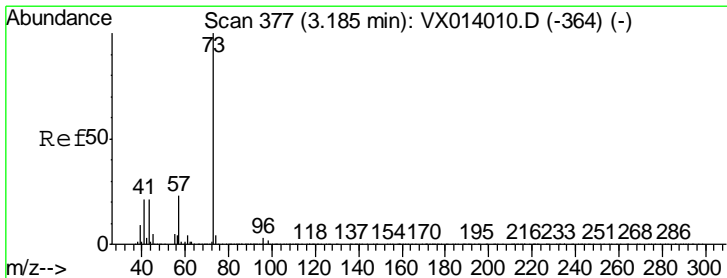
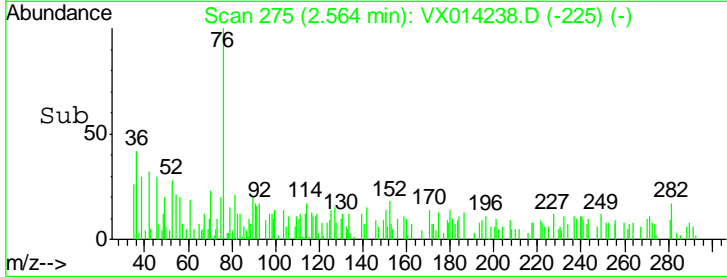
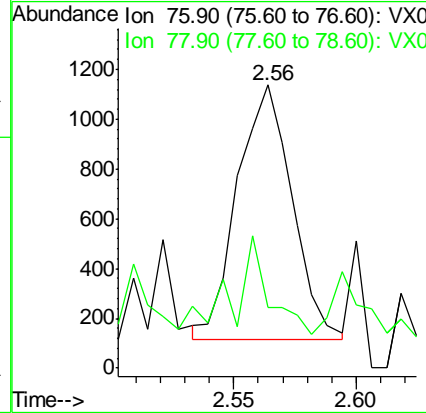
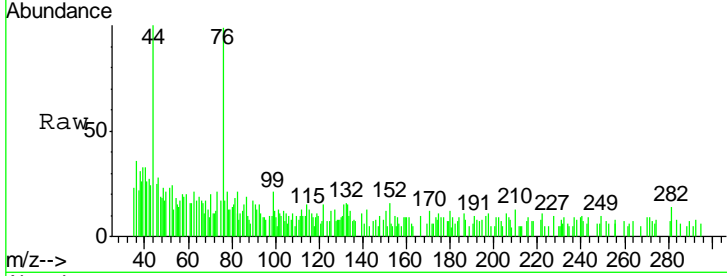




#17
 Carbon Disulfide
 Concen: 0.858 ug/l
 RT: 2.56 min Scan# 275
 Delta R.T. 0.01 min
 Lab File: VX014238.D
 Acq: 24 Dec 2019 12:32

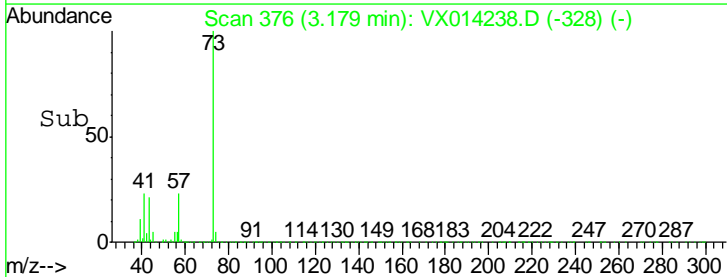
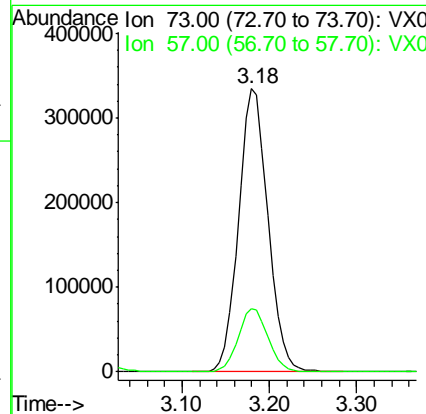
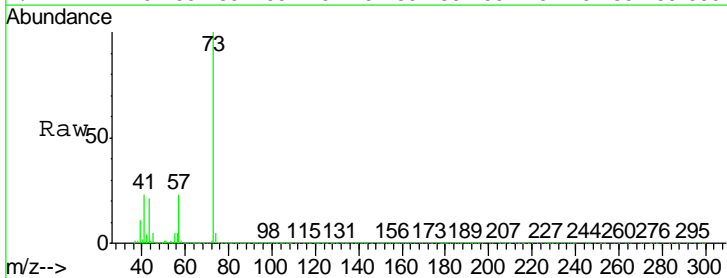
Instrument :
 MSVOA_X
 ClientSampled :
 MW-7DL

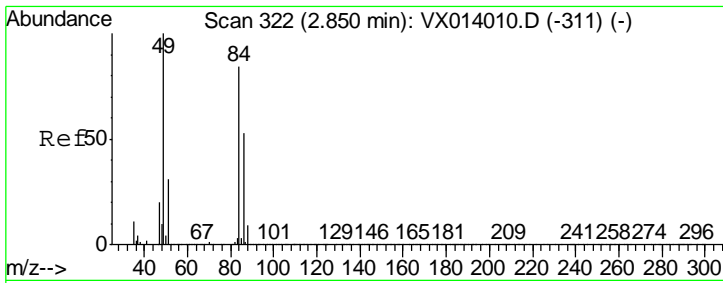
Tgt Ion: 76 Resp: 1591
 Ion Ratio Lower Upper
 76 100
 78 14.8 7.2 10.8#



#19
 Methyl tert-butyl Ether
 Concen: 45.361 ug/l
 RT: 3.18 min Scan# 376
 Delta R.T. -0.01 min
 Lab File: VX014238.D
 Acq: 24 Dec 2019 12:32

Tgt Ion: 73 Resp: 780825
 Ion Ratio Lower Upper
 73 100
 57 22.4 18.8 28.2

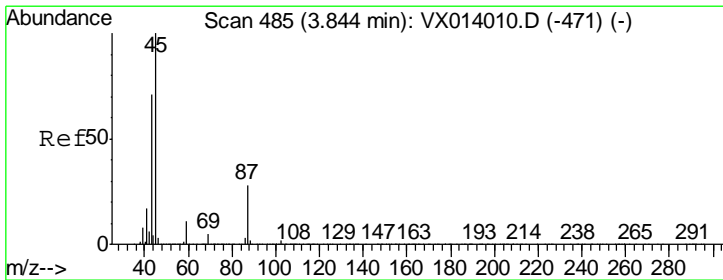
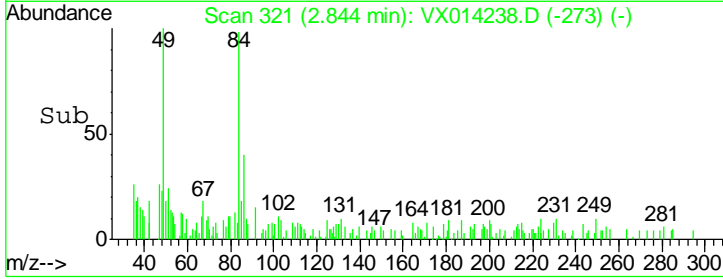
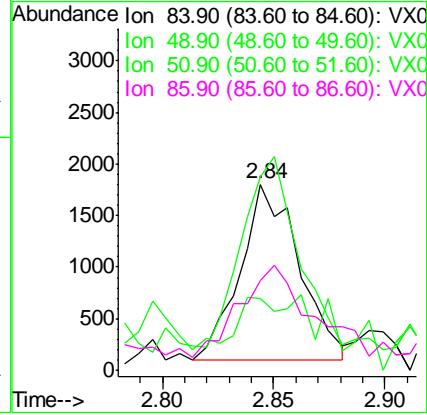
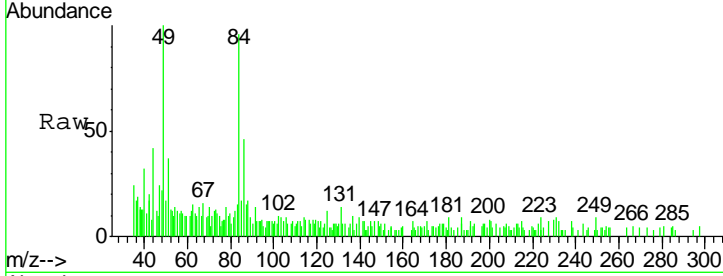




#20
Methylene Chloride
Concen: 0.494 ug/l
RT: 2.84 min Scan# 321
Delta R.T. -0.01 min
Lab File: VX014238.D
Acq: 24 Dec 2019 12:32

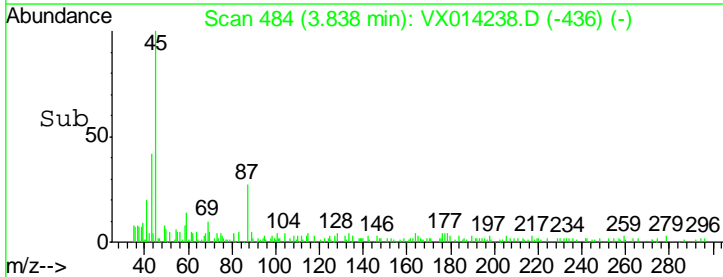
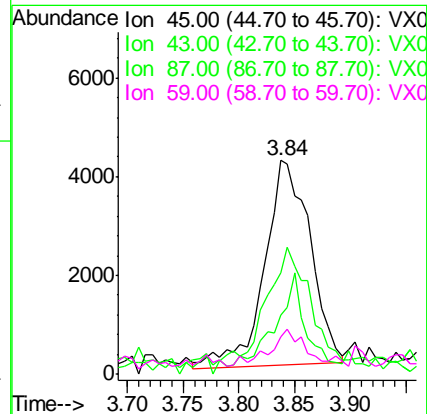
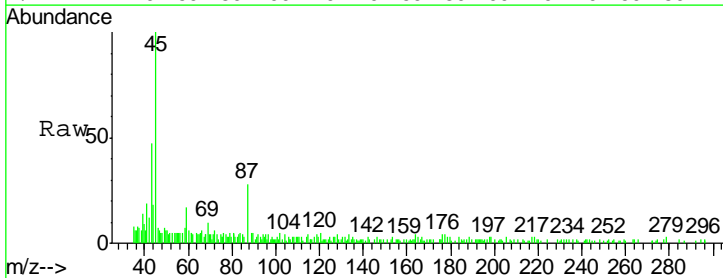
Instrument :
MSVOA_X
ClientSampled :
MW-7DL

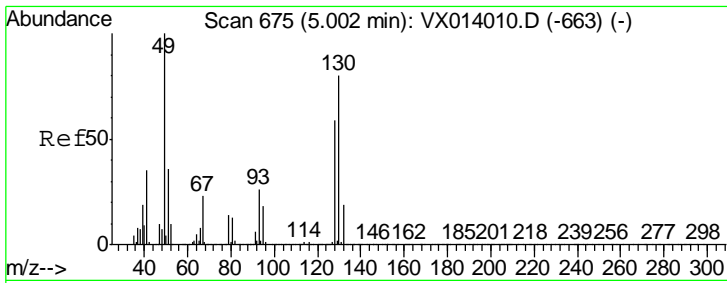
Tgt Ion	Resp	Lower	Upper
84	3120		
49	96.2	95.8	143.6
51	29.2	29.8	44.8#
86	44.0	50.8	76.2#



#22
Diisopropyl ether
Concen: 0.640 ug/l
RT: 3.84 min Scan# 484
Delta R.T. -0.01 min
Lab File: VX014238.D
Acq: 24 Dec 2019 12:32

Tgt Ion	Resp	Lower	Upper
45	11921		
43	42.9	57.4	86.0#
87	26.3	21.9	32.9
59	14.0	9.0	13.6#

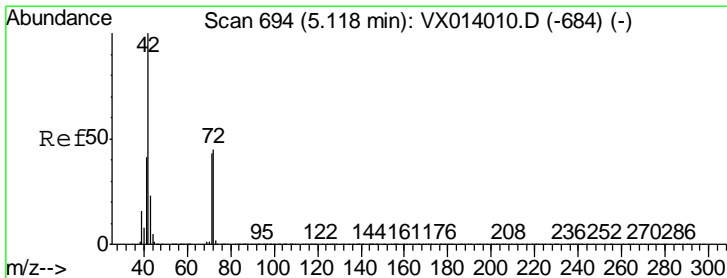
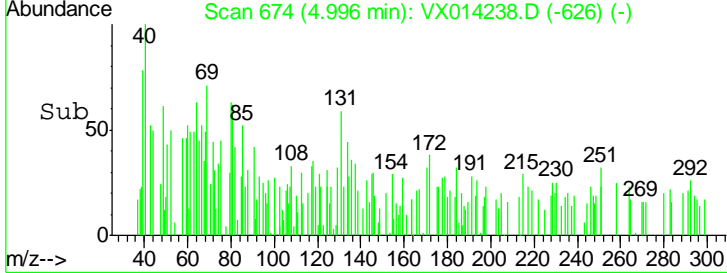
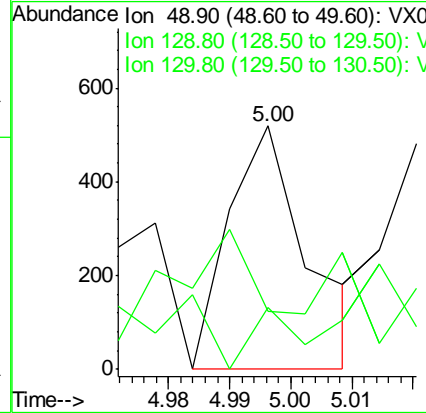
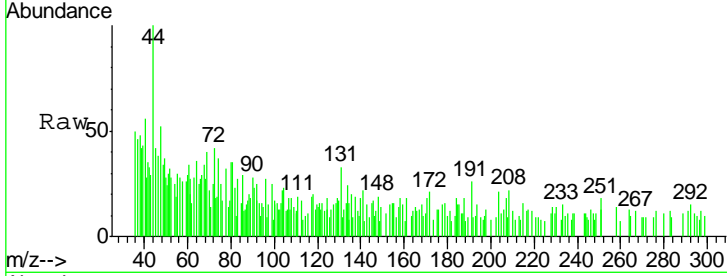




#28
 Bromochloromethane
 Concen: 0.568 ug/l
 RT: 5.00 min Scan# 674
 Delta R.T. -0.01 min
 Lab File: VX014238.D
 Acq: 24 Dec 2019 12:32

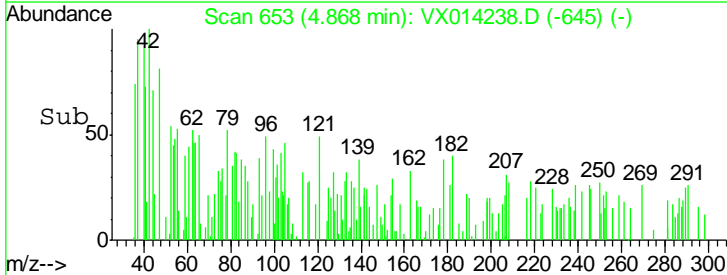
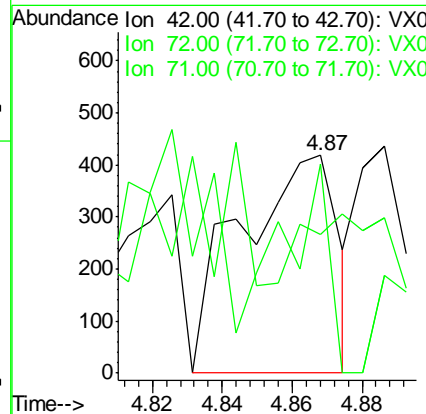
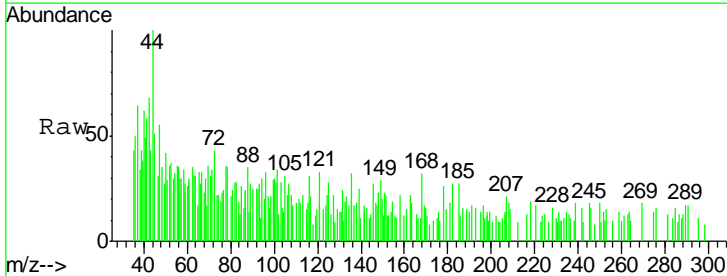
Instrument :
 MSVOA_X
 ClientSampled :
 MW-7DL

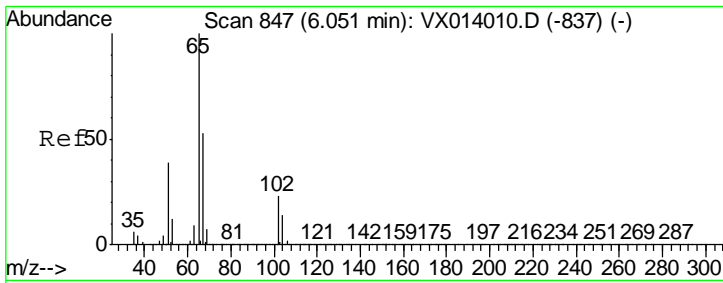
Tgt Ion	Resp	Lower	Upper
49	100		
129	29.3	0.0	5.0#
130	56.1	64.6	97.0#



#29
 Tetrahydrofuran
 Concen: 0.293 ug/l
 RT: 4.87 min Scan# 653
 Delta R.T. -0.25 min
 Lab File: VX014238.D
 Acq: 24 Dec 2019 12:32

Tgt Ion	Resp	Lower	Upper
42	100		
72	46.7	35.8	53.8
71	40.4	33.6	50.4

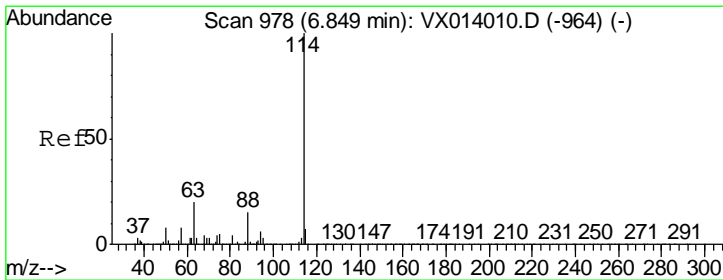
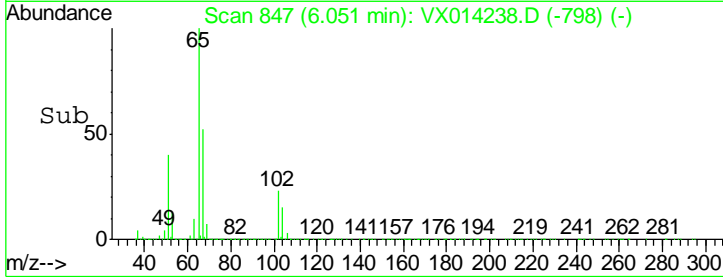
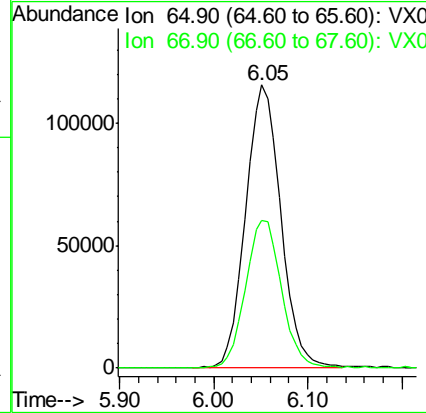
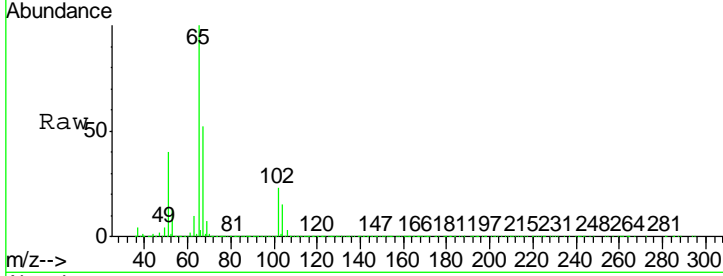




#33
 1,2-Dichloroethane-d4
 Concen: 48.648 ug/l
 RT: 6.05 min Scan# 847
 Delta R.T. 0.00 min
 Lab File: VX014238.D
 Acq: 24 Dec 2019 12:32

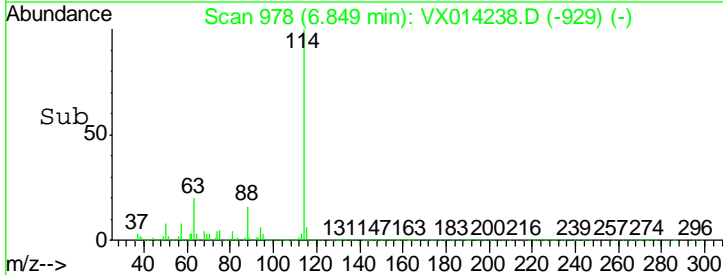
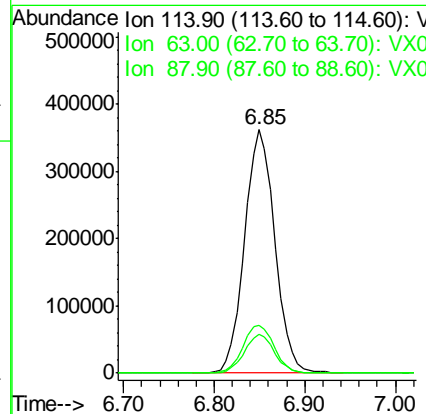
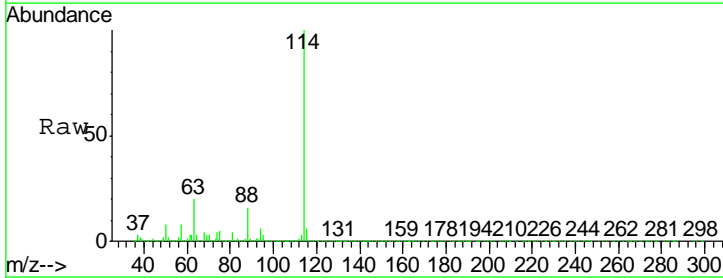
Instrument :
 MSVOA_X
 ClientSampled :
 MW-7DL

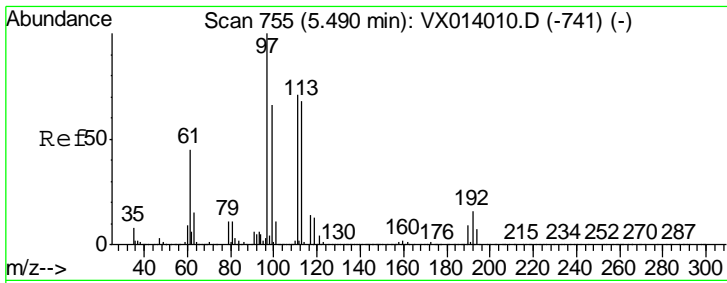
Tgt Ion: 65 Resp: 300253
 Ion Ratio Lower Upper
 65 100
 67 53.3 0.0 106.4



#34
 1,4-Difluorobenzene
 Concen: 50.000 ug/l
 RT: 6.85 min Scan# 978
 Delta R.T. 0.00 min
 Lab File: VX014238.D
 Acq: 24 Dec 2019 12:32

Tgt Ion: 114 Resp: 835516
 Ion Ratio Lower Upper
 114 100
 63 19.9 0.0 40.8
 88 15.7 0.0 30.4

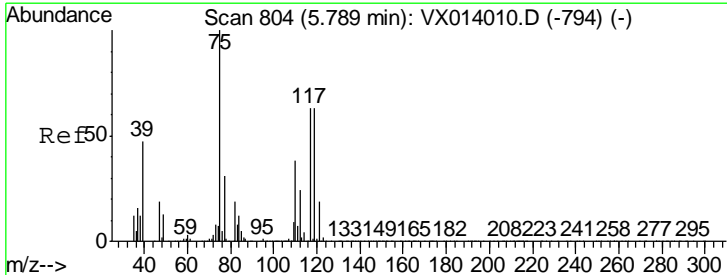
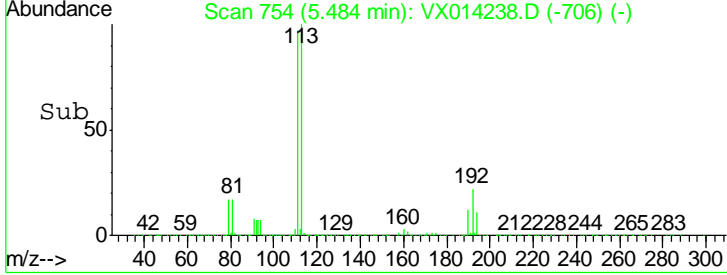
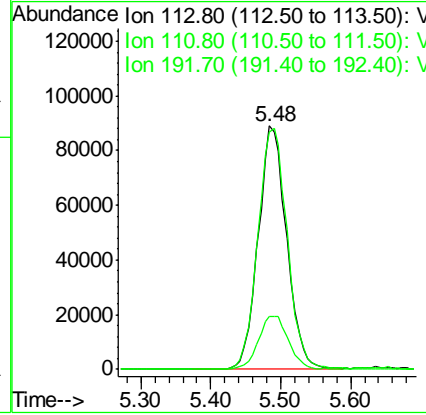
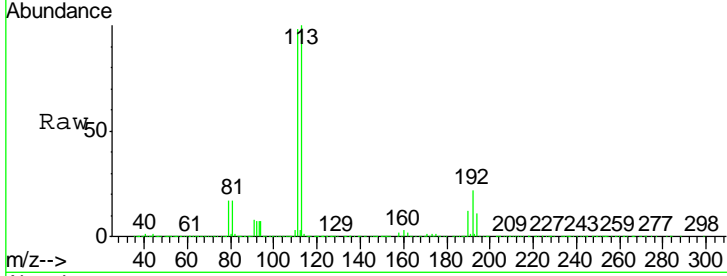




#35
 Dibromofluoromethane
 Concen: 49.438 ug/l
 RT: 5.48 min Scan# 754
 Delta R.T. -0.01 min
 Lab File: VX014238.D
 Acq: 24 Dec 2019 12:32

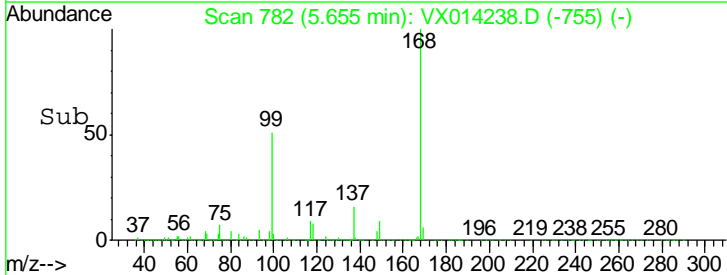
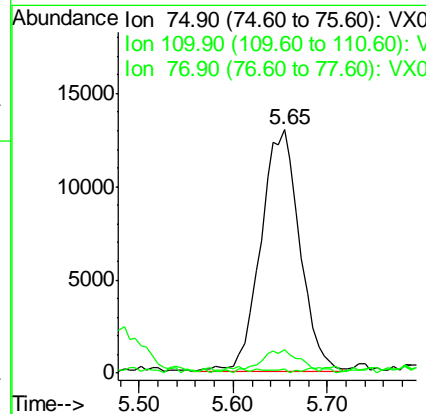
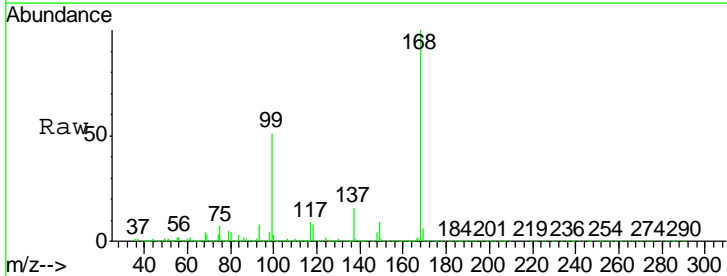
Instrument :
 MSVOA_X
ClientSampled :
 MW-7DL

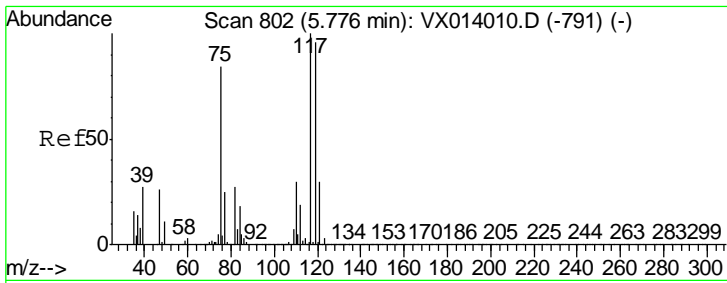
Tgt Ion	Resp	Lower	Upper
113	251097		
111	101.7	82.0	123.0
192	22.8	19.3	28.9



#36
 1,1-Dichloropropene
 Concen: 4.875 ug/l
 RT: 5.65 min Scan# 782
 Delta R.T. -0.13 min
 Lab File: VX014238.D
 Acq: 24 Dec 2019 12:32

Tgt Ion	Resp	Lower	Upper
75	37375		
110	10.1	18.3	54.9#
77	0.0	24.8	37.2#

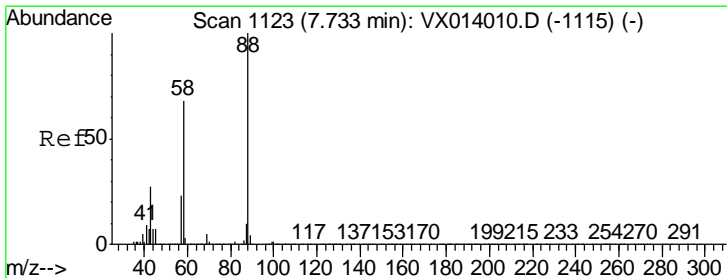
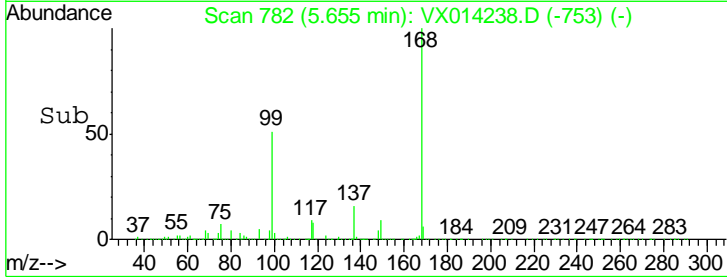
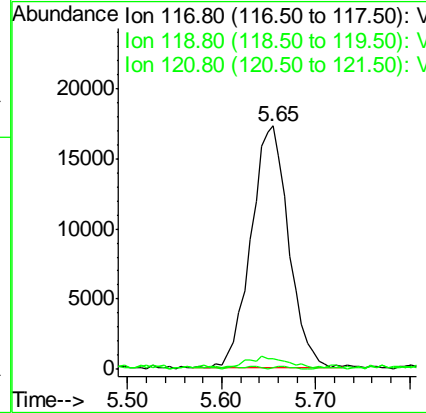
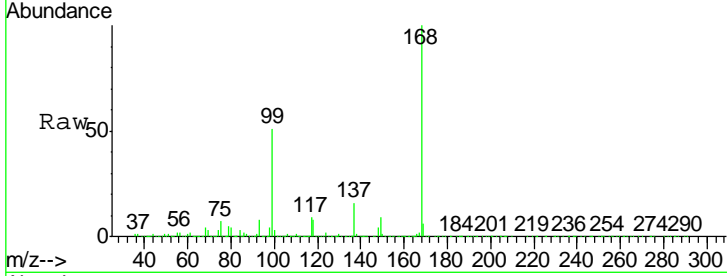




#38
 Carbon Tetrachloride
 Concen: 6.925 ug/l
 RT: 5.65 min Scan# 782
 Delta R.T. -0.12 min
 Lab File: VX014238.D
 Acq: 24 Dec 2019 12:32

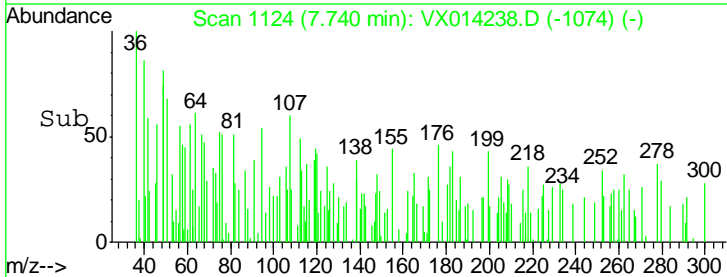
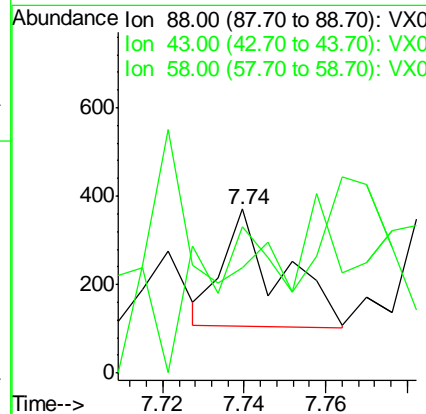
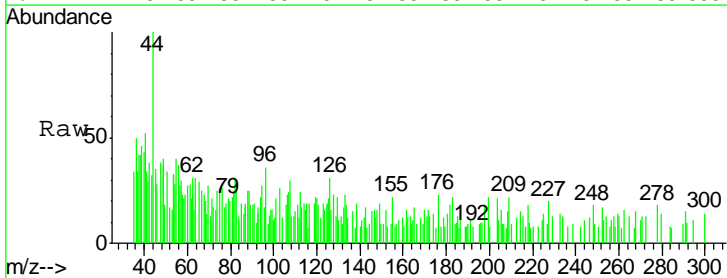
Instrument :
 MSVOA_X
 ClientSampled :
 MW-7DL

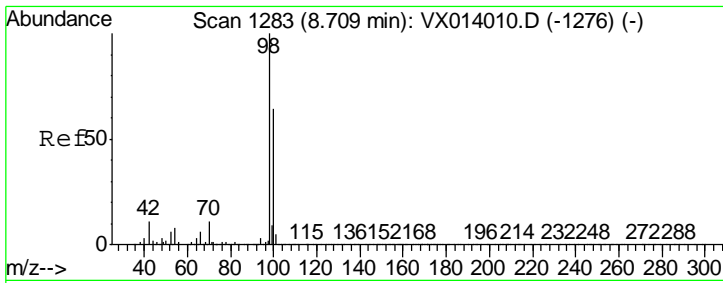
Tgt Ion	Resp	Lower	Upper
117	48362		
119	3.4	76.2	114.4#
121	0.0	23.6	35.4#



#49
 1,4-Dioxane
 Concen: 1.834 ug/l
 RT: 7.74 min Scan# 1124
 Delta R.T. 0.01 min
 Lab File: VX014238.D
 Acq: 24 Dec 2019 12:32

Tgt Ion	Resp	Lower	Upper
88	256		
43	0.0	26.5	39.7#
58	177.3	56.8	85.2#

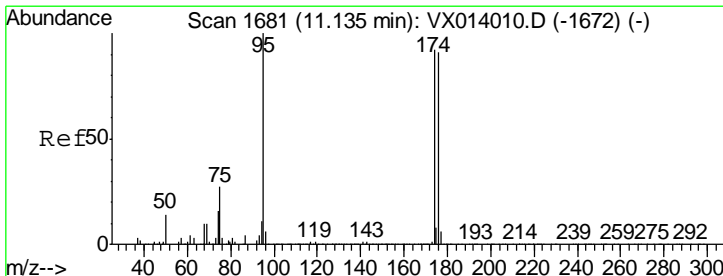
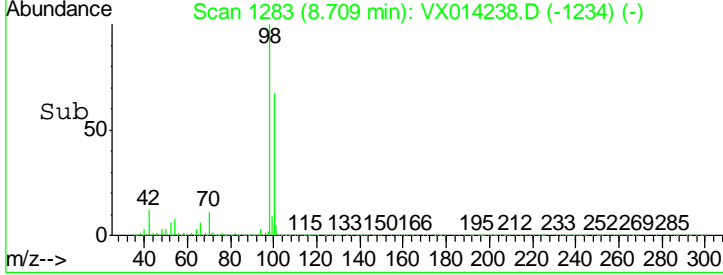
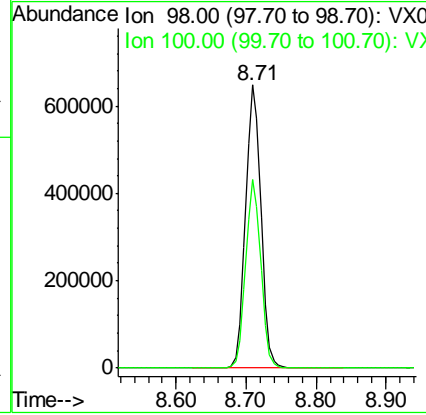
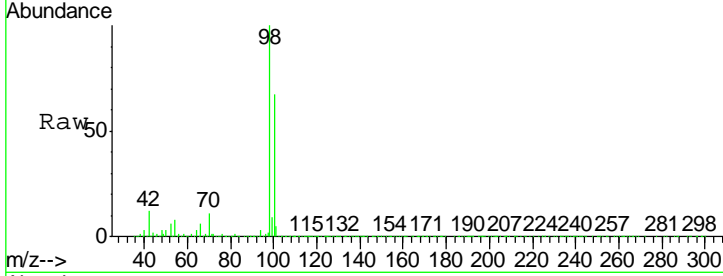




#50
 Toluene-d8
 Concen: 50.240 ug/l
 RT: 8.71 min Scan# 1283
 Delta R.T. 0.00 min
 Lab File: VX014238.D
 Acq: 24 Dec 2019 12:32

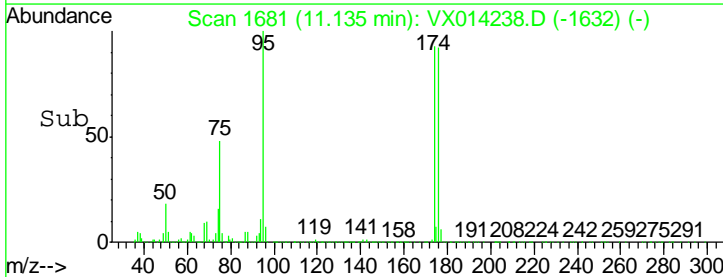
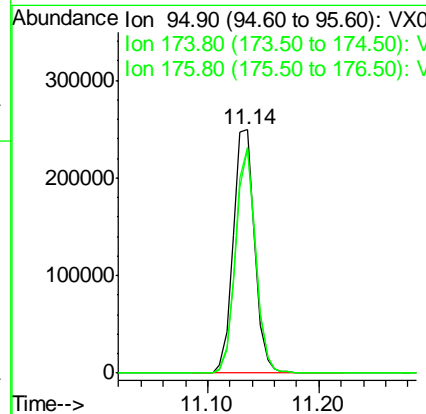
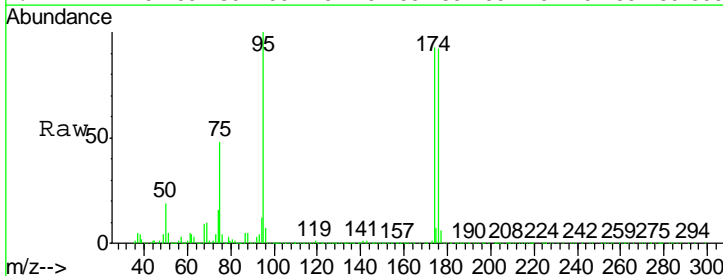
Instrument :
 MSVOA_X
 ClientSampled :
 MW-7DL

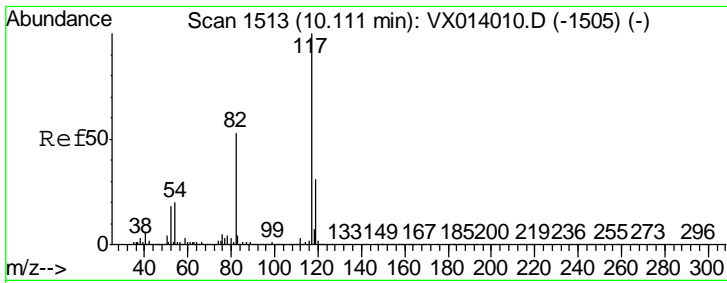
Tgt Ion: 98 Resp: 993442
 Ion Ratio Lower Upper
 98 100
 100 65.5 52.9 79.3



#62
 4-Bromofluorobenzene
 Concen: 45.649 ug/l
 RT: 11.14 min Scan# 1681
 Delta R.T. 0.00 min
 Lab File: VX014238.D
 Acq: 24 Dec 2019 12:32

Tgt Ion: 95 Resp: 329964
 Ion Ratio Lower Upper
 95 100
 174 88.5 0.0 175.8
 176 85.7 0.0 173.0

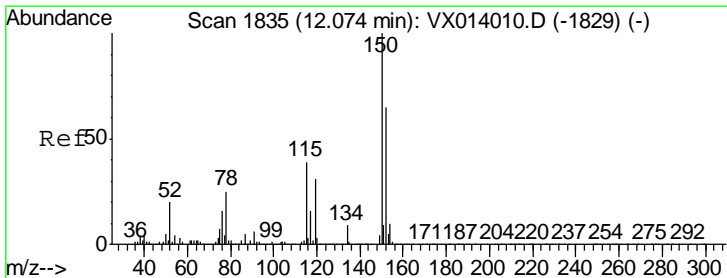
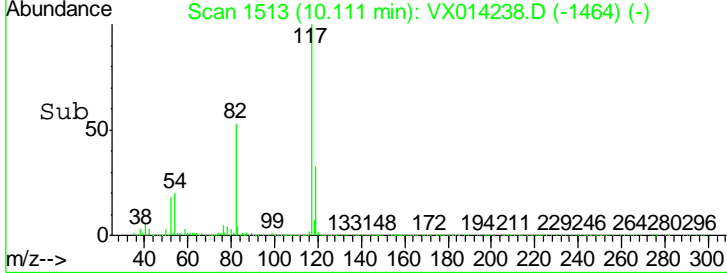
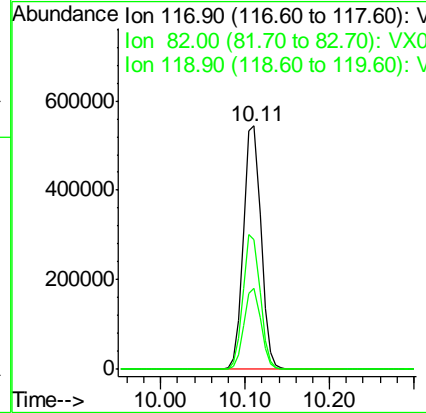
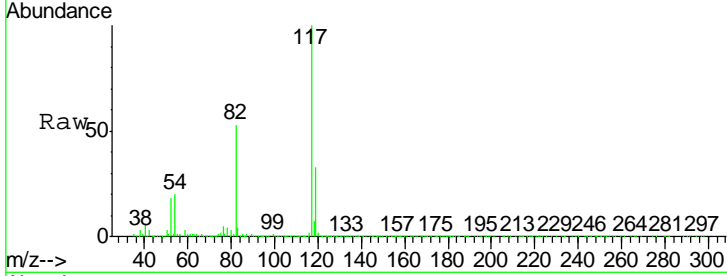




#63
 Chlorobenzene-d5
 Concen: 50.000 ug/l
 RT: 10.11 min Scan# 1513
 Delta R.T. 0.00 min
 Lab File: VX014238.D
 Acq: 24 Dec 2019 12:32

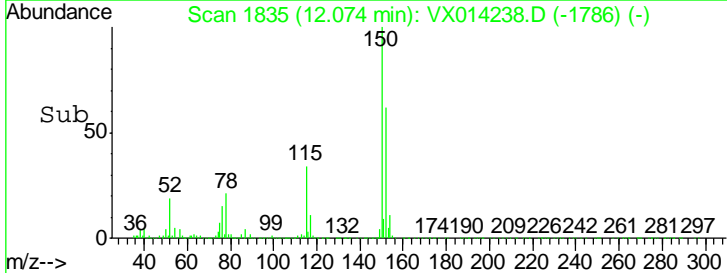
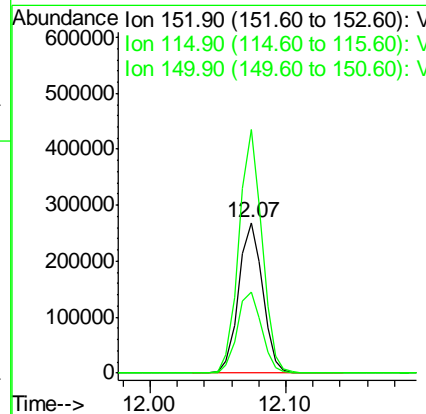
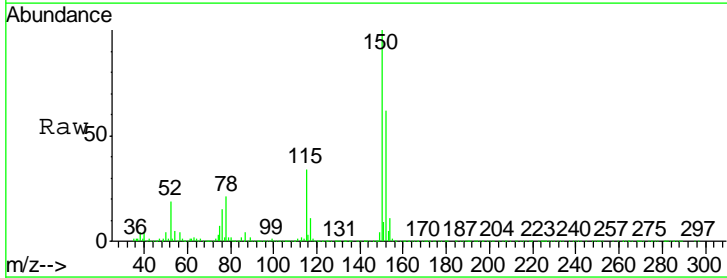
Instrument : MSVOA_X
 ClientSampled : MW-7DL

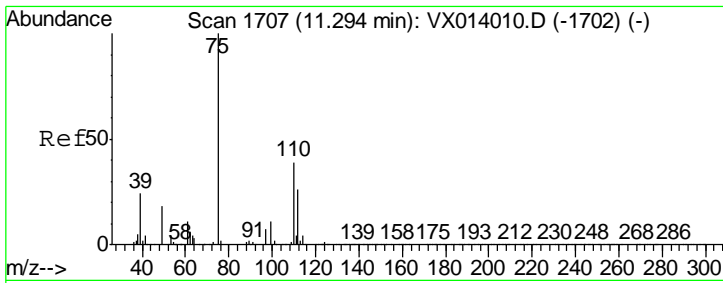
Tgt Ion	Resp	Lower	Upper
117	754090		
82	53.1	42.2	63.4
119	33.1	25.1	37.7



#72
 1,4-Dichlorobenzene-d4
 Concen: 50.000 ug/l
 RT: 12.07 min Scan# 1835
 Delta R.T. 0.00 min
 Lab File: VX014238.D
 Acq: 24 Dec 2019 12:32

Tgt Ion	Resp	Lower	Upper
152	329287		
115	55.2	38.3	114.9
150	156.1	0.0	345.4

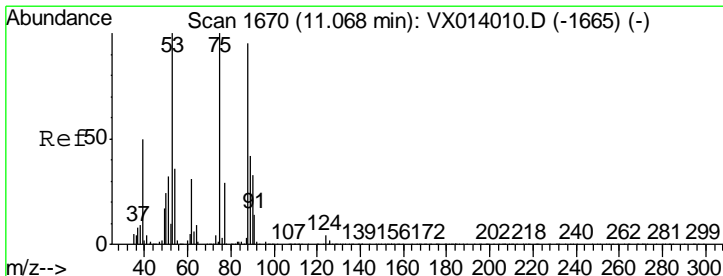
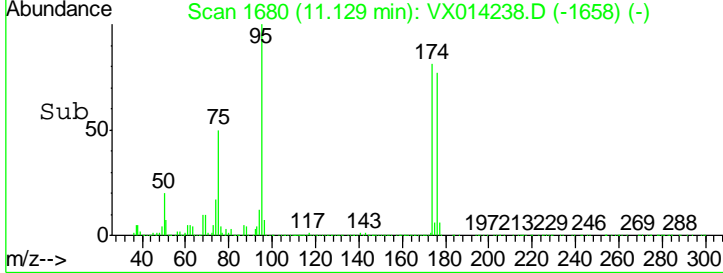
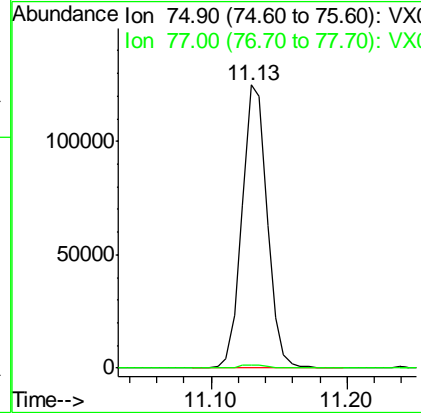
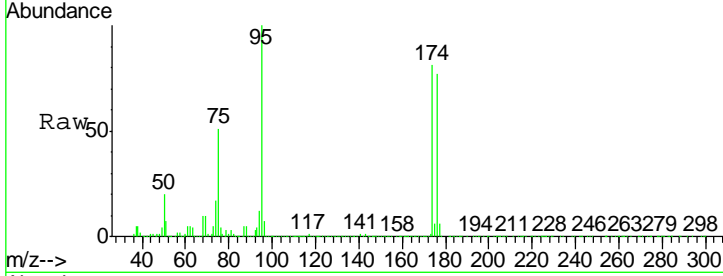




#76
 1,2,3-Trichloropropane
 Concen: 22.469 ug/l
 RT: 11.13 min Scan# 1680
 Delta R.T. -0.16 min
 Lab File: VX014238.D
 Acq: 24 Dec 2019 12:32

Instrument :
 MSVOA_X
 ClientSampled :
 MW-7DL

Tgt Ion: 75 Resp: 160629
 Ion Ratio Lower Upper
 75 100
 77 1.4 19.3 57.8#



#81
 trans-1,4-Dichloro-2-butene
 Concen: 63.421 ug/l
 RT: 11.13 min Scan# 1680
 Delta R.T. 0.06 min
 Lab File: VX014238.D
 Acq: 24 Dec 2019 12:32

Tgt Ion: 75 Resp: 160629
 Ion Ratio Lower Upper
 75 100
 53 0.5 76.7 115.1#
 89 0.1 34.6 51.8#

