

Data Path : Z:\VOASRV\HPCHEM1\MSVOA_X\DATA\VX122419\
 Data File : VX014239.D
 Acq On : 24 Dec 2019 12:55
 Operator : JC/SP
 Sample : K6401-01 40X
 Misc : 4.72g/10mL/100uL/5.00mL/MSVOA_X/MEOH
 ALS Vial : 9 Sample Multiplier: 1

Instrument :
 MSVOA_X
 ClientSampleId :
 C0B37

Quant Time: Dec 25 05:39:12 2019
 Quant Method : Z:\VOASRV\HPCHEM1\MSVOA_X\METHOD\82X121319W.M
 Quant Title : SW846 8260
 QLast Update : Tue Dec 17 03:01:07 2019
 Response via : Initial Calibration

Internal Standards	R.T.	QIon	Response	Conc	Units	Dev(Min)
1) Pentafluorobenzene	5.65	168	545738	50.00	ug/l	0.00
34) 1,4-Difluorobenzene	6.85	114	846897	50.00	ug/l	0.00
63) Chlorobenzene-d5	10.11	117	774279	50.00	ug/l	0.00
72) 1,4-Dichlorobenzene-d4	12.07	152	359142	50.00	ug/l	0.00

System Monitoring Compounds

33) 1,2-Dichloroethane-d4	6.05	65	303026	48.99	ug/l	0.00
Spiked Amount	50.000		Recovery	=	97.98%	
35) Dibromofluoromethane	5.49	113	248983	48.36	ug/l	0.00
Spiked Amount	50.000		Recovery	=	96.72%	
50) Toluene-d8	8.71	98	1003766	50.08	ug/l	0.00
Spiked Amount	50.000		Recovery	=	100.16%	
62) 4-Bromofluorobenzene	11.13	95	359623	49.08	ug/l	0.00
Spiked Amount	50.000		Recovery	=	98.16%	

Target Compounds

	R.T.	QIon	Response	Conc	Units	Qvalue
6) Chloroethane	1.62	64	2789	0.654	ug/l	89
10) Methyl Iodide	2.52	142	1175	2.784	ug/l #	77
11) Tert butyl alcohol	3.00	59	6301	4.715	ug/l #	79
13) Acrolein	2.30	56	154	0.201	ug/l #	1
16) Acetone	2.44	43	13634	3.395	ug/l	95
17) Carbon Disulfide	2.56	76	2222	0.900	ug/l #	75
20) Methylene Chloride	2.85	84	4951	0.783	ug/l	94
25) 2-Butanone	4.69	43	5386	1.088	ug/l #	56
27) cis-1,2-Dichloroethene	4.58	96	1963	0.300	ug/l	94
28) Bromochloromethane	5.00	49	278	0.523	ug/l #	96
29) Tetrahydrofuran	5.14	42	1259	0.455	ug/l	92
36) 1,1-Dichloropropene	5.65	75	38457	4.949	ug/l #	51
38) Carbon Tetrachloride	5.65	117	49519	6.995	ug/l #	17
39) Methylcyclohexane	7.46	83	5478	0.571	ug/l #	85
44) Trichloroethene	7.20	130	57961	8.777	ug/l	99
49) 1,4-Dioxane	7.77	88	871	6.155	ug/l #	72
52) Toluene	8.78	92	10830	0.717	ug/l	98
59) 2-Hexanone	9.68	43	1584	0.221	ug/l	68
67) Ethyl Benzene	10.25	91	610024	21.553	ug/l	100
68) m/p-Xylenes	10.36	106	838419	77.018	ug/l	100
69) o-Xylene	10.70	106	310072	29.042	ug/l	98
70) Styrene	10.69	104	15424	0.854	ug/l #	1
73) Isopropylbenzene	11.01	105	30143	1.192	ug/l	97
74) N-acyl acetate	10.88	43	17412	1.469	ug/l #	57
75) 1,1,2,2-Tetrachloroethane	11.27	83	8611	0.982	ug/l #	26
76) 1,2,3-Trichloropropane	11.13	75	174667	22.402	ug/l #	40
78) n-propylbenzene	11.35	91	54325	1.915	ug/l	99
79) 2-Chlorotoluene	11.67	91	9736	0.565	ug/l	80
80) 1,3,5-Trimethylbenzene	11.50	105	159951	7.516	ug/l	99
81) trans-1,4-Dichloro-2-buten	11.13	75	174667	63.230	ug/l #	14
82) 4-Chlorotoluene	11.67	91	9900	0.495	ug/l	92
83) tert-Butylbenzene	11.76	119	18055	0.872	ug/l	88
84) 1,2,4-Trimethylbenzene	11.80	105	285716	13.406	ug/l	99
85) sec-Butylbenzene	11.94	105	29012	1.187	ug/l	99

Data Path : Z:\VOASRV\HPCHEM1\MSVOA_X\DATA\VX122419\
 Data File : VX014239.D
 Acq On : 24 Dec 2019 12:55
 Operator : JC/SP
 Sample : K6401-01 40X
 Misc : 4.72g/10mL/100uL/5.00mL/MSVOA_X/MEOH
 ALS Vial : 9 Sample Multiplier: 1

Instrument :
 MSVOA_X
 ClientSampleId :
 C0B37

Quant Time: Dec 25 05:39:12 2019
 Quant Method : Z:\VOASRV\HPCHEM1\MSVOA_X\METHOD\82X121319W.M
 Quant Title : SW846 8260
 QLast Update : Tue Dec 17 03:01:07 2019
 Response via : Initial Calibration

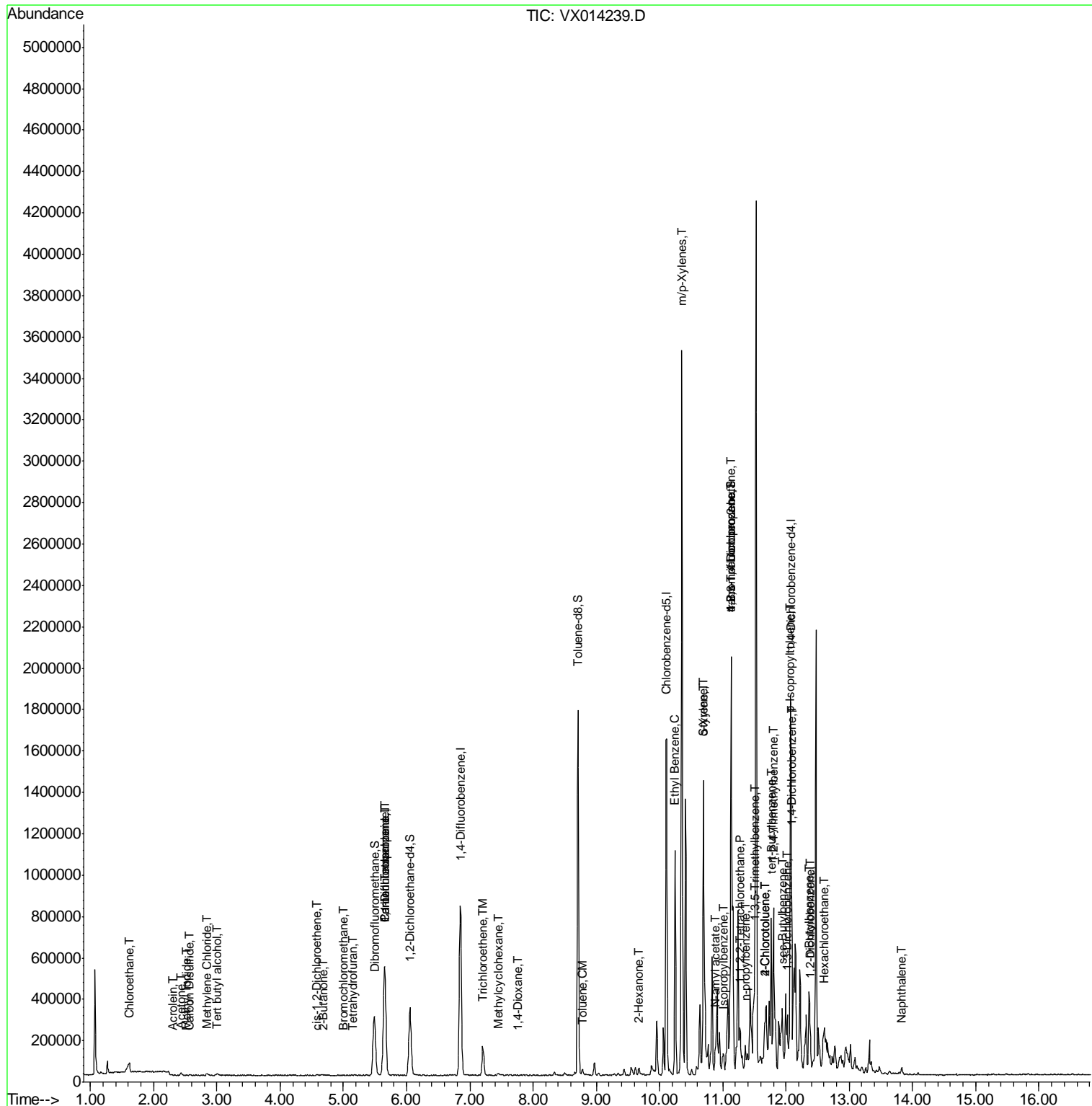
Internal Standards	R.T.	QIon	Response	Conc	Units	Dev(Min)
86) p-Isopropyltoluene	12.06	119	29682	1.327	ug/l	96
87) 1,3-Dichlorobenzene	12.02	146	3383	0.277	ug/l #	14
88) 1,4-Dichlorobenzene	12.09	146	4285	0.346	ug/l #	18
89) n-Butylbenzene	12.38	91	46866	2.456	ug/l #	31
90) Hexachloroethane	12.60	117	4024	1.002	ug/l #	10
91) 1,2-Dichlorobenzene	12.39	146	6852	0.558	ug/l #	77
95) Naphthalene	13.83	128	23076	0.984	ug/l	97

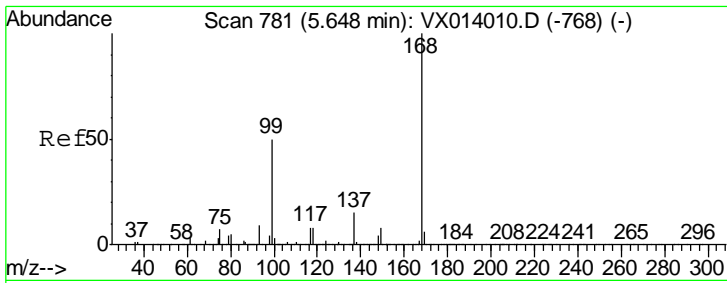
(#) = qualifier out of range (m) = manual integration (+) = signals summed

Data Path : Z:\VOASRV\HPCHEM1\MSVOA_X\DATA\VX122419\
 Data File : VX014239.D
 Acq On : 24 Dec 2019 12:55
 Operator : JC/SP
 Sample : K6401-01 40X
 Misc : 4.72g/10mL/100uL/5.00mL/MSVOA_X/MEOH
 ALS Vial : 9 Sample Multiplier: 1

Instrument :
 MSVOA_X
 ClientSampleId :
 C0B37

Quant Time: Dec 25 05:39:12 2019
 Quant Method : Z:\VOASRV\HPCHEM1\MSVOA_X\METHOD\82X121319W.M
 Quant Title : SW846 8260
 QLast Update : Tue Dec 17 03:01:07 2019
 Response via : Initial Calibration

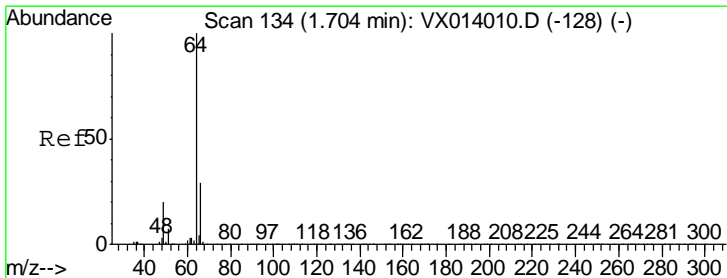
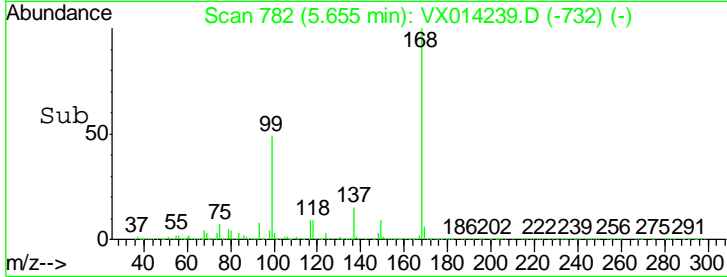
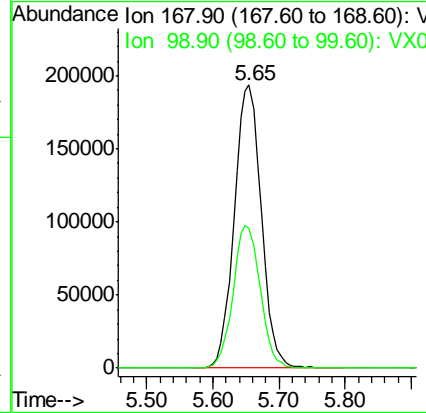
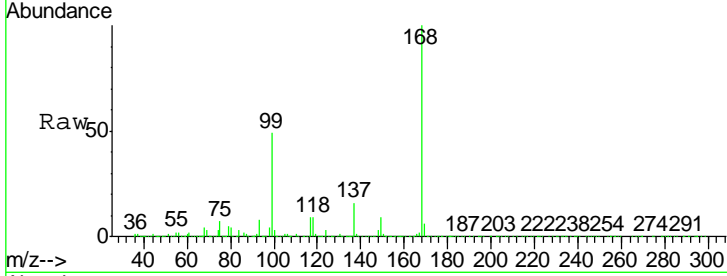




#1
 Pentafluorobenzene
 Concen: 50.000 ug/l
 RT: 5.65 min Scan# 782
 Delta R.T. 0.01 min
 Lab File: VX014239.D
 Acq: 24 Dec 2019 12:55

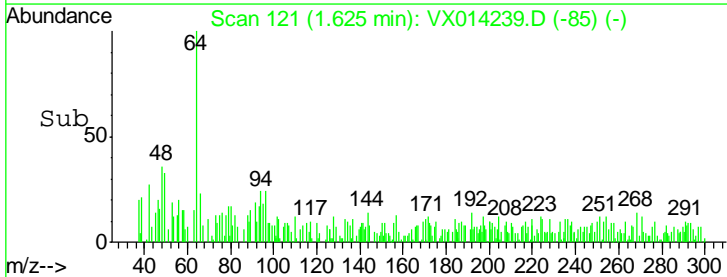
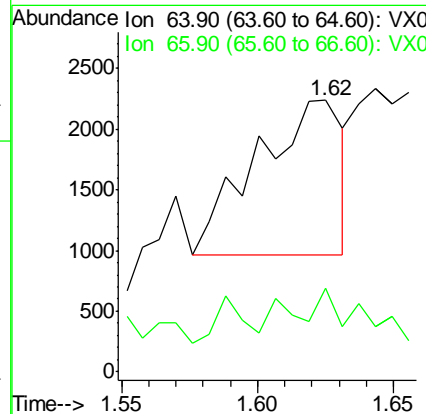
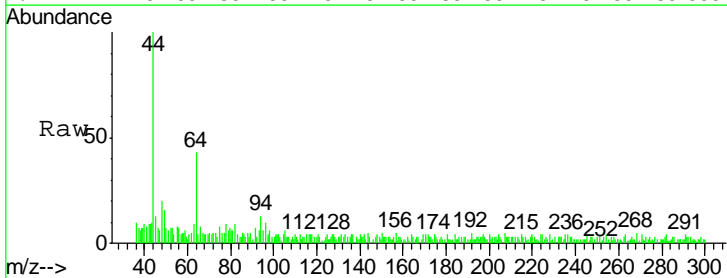
Instrument :
 MSVOA_X
 ClientSampled :
 C0B37

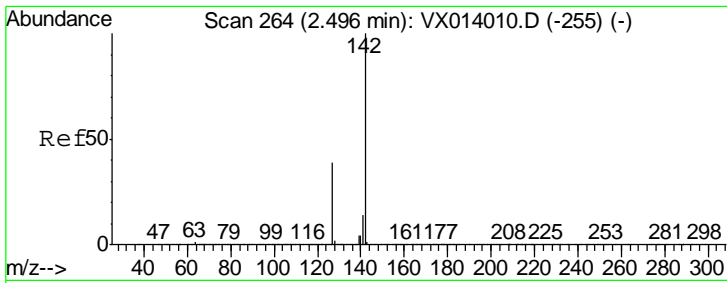
Tgt Ion	Resp	Lower	Upper
168	100		
99	49.4	40.3	60.5



#6
 Chloroethane
 Concen: 0.654 ug/l
 RT: 1.62 min Scan# 121
 Delta R.T. -0.08 min
 Lab File: VX014239.D
 Acq: 24 Dec 2019 12:55

Tgt Ion	Resp	Lower	Upper
64	100		
66	35.1	23.4	35.2

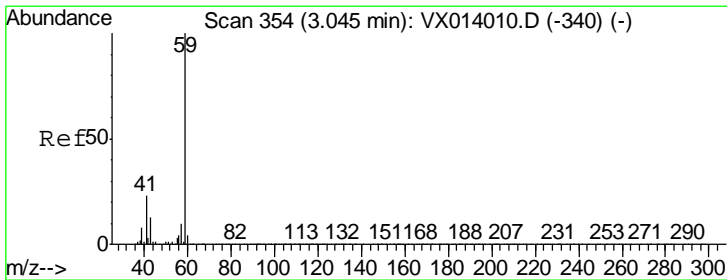
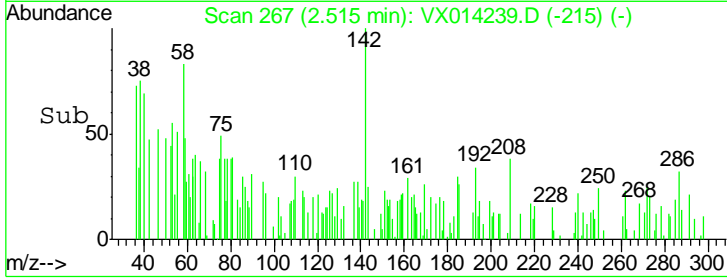
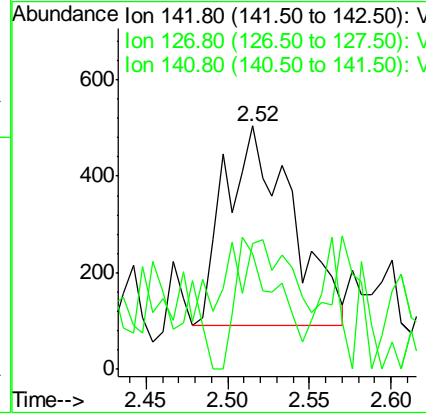
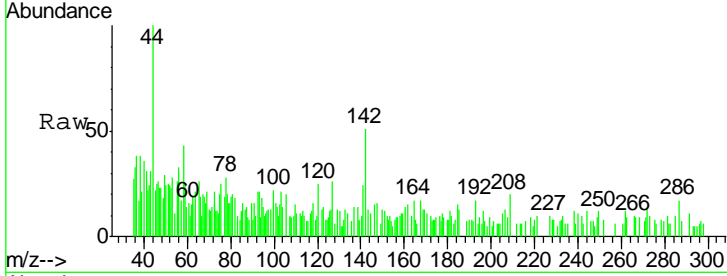




#10
 Methyl Iodide
 Concen: 2.784 ug/l
 RT: 2.52 min Scan# 267
 Delta R.T. 0.02 min
 Lab File: VX014239.D
 Acq: 24 Dec 2019 12:55

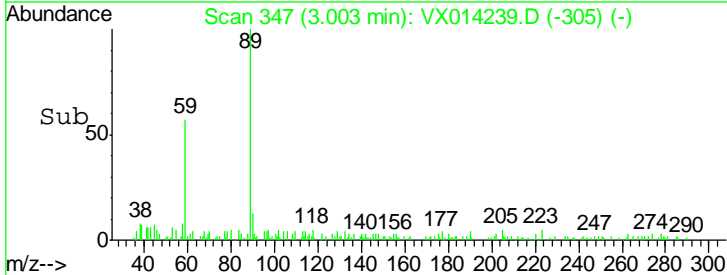
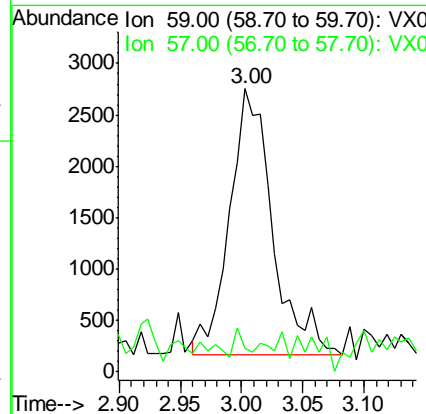
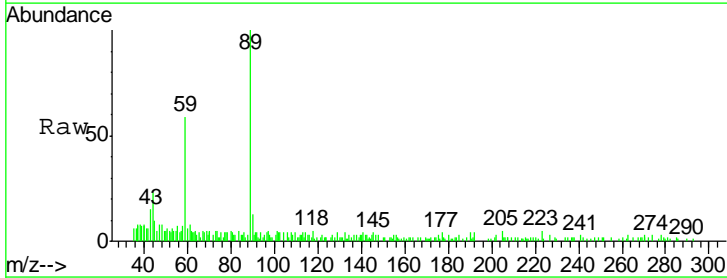
Instrument : MSVOA_X
 ClientSampled : C0B37

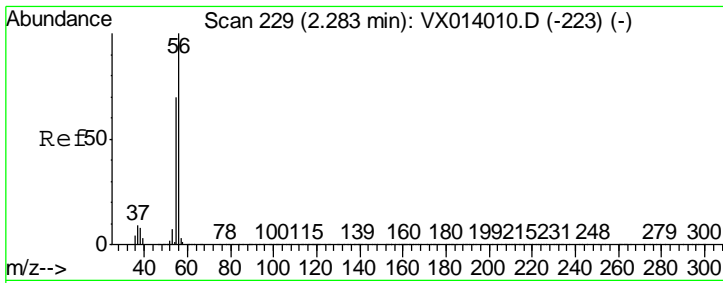
Tgt Ion	Ratio	Lower	Upper
142	100		
127	34.8	31.6	47.4
141	40.5	11.6	17.4#



#11
 Tert butyl alcohol
 Concen: 4.715 ug/l
 RT: 3.00 min Scan# 347
 Delta R.T. -0.04 min
 Lab File: VX014239.D
 Acq: 24 Dec 2019 12:55

Tgt Ion	Ratio	Lower	Upper
59	100		
57	2.6	8.4	12.6#

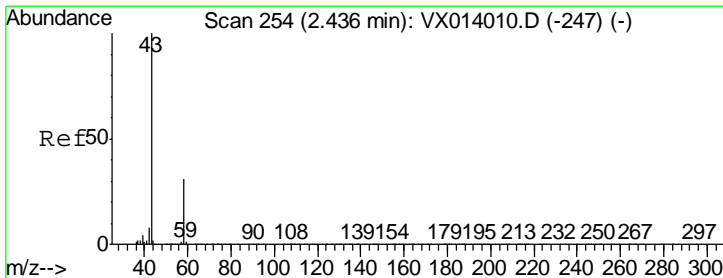
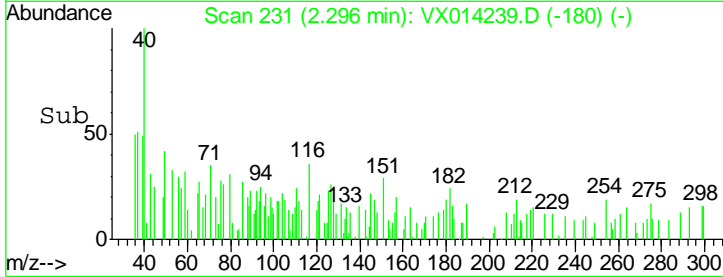
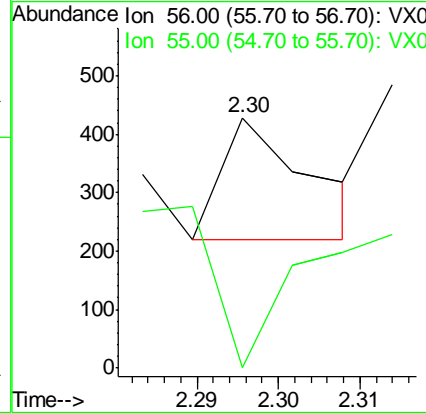
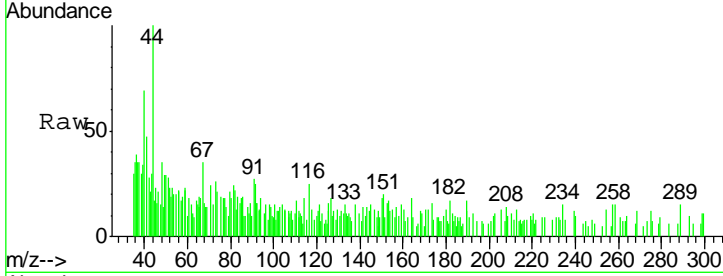




#13
 Acrolein
 Concen: 0.201 ug/l
 RT: 2.30 min Scan# 231
 Delta R.T. 0.01 min
 Lab File: VX014239.D
 Acq: 24 Dec 2019 12:55

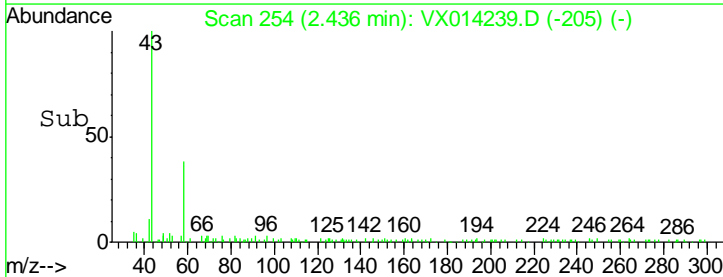
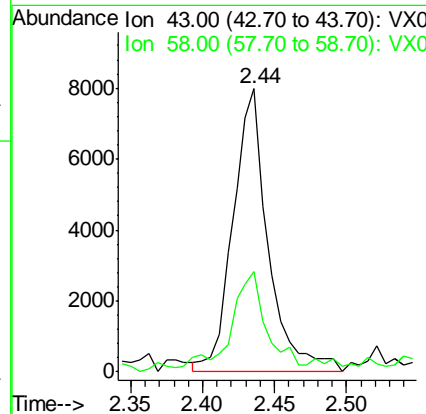
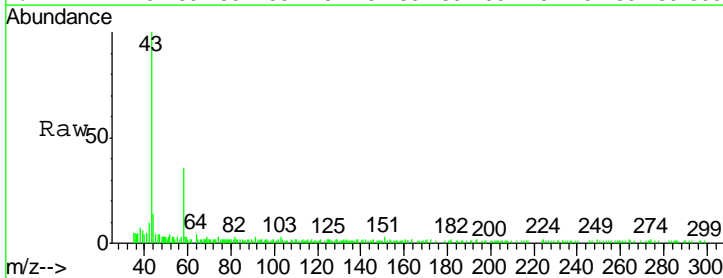
Instrument :
 MSVOA_X
 ClientSampled :
 C0B37

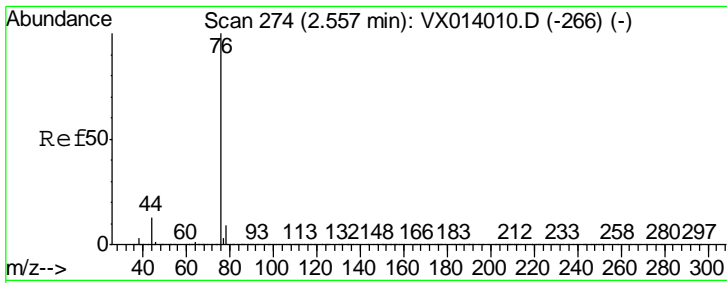
Tgt Ion: 56 Resp: 154
 Ion Ratio Lower Upper
 56 100
 55 188.3 56.9 85.3#



#16
 Acetone
 Concen: 3.395 ug/l
 RT: 2.44 min Scan# 254
 Delta R.T. 0.00 min
 Lab File: VX014239.D
 Acq: 24 Dec 2019 12:55

Tgt Ion: 43 Resp: 13634
 Ion Ratio Lower Upper
 43 100
 58 33.8 24.9 37.3

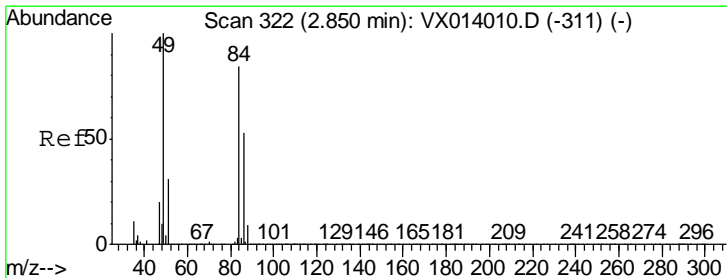
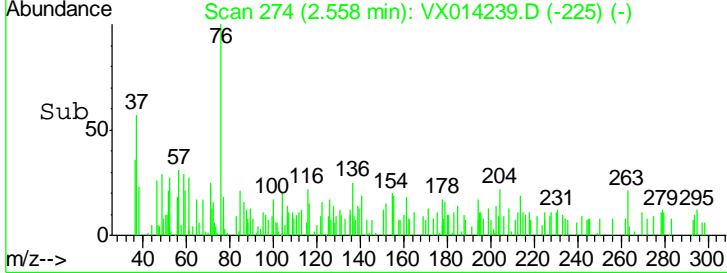
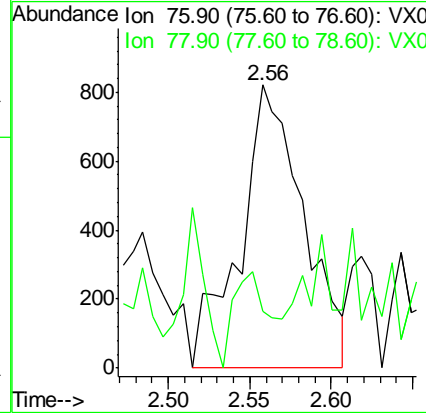
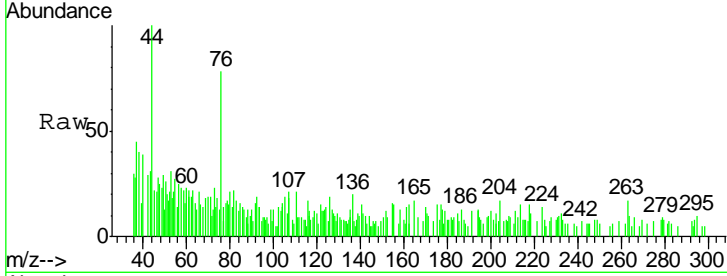




#17
 Carbon Disulfide
 Concen: 0.900 ug/l
 RT: 2.56 min Scan# 274
 Delta R.T. 0.00 min
 Lab File: VX014239.D
 Acq: 24 Dec 2019 12:55

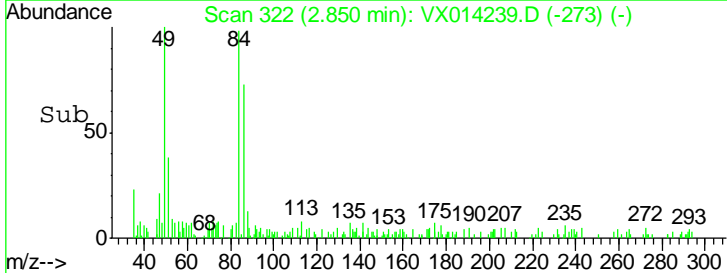
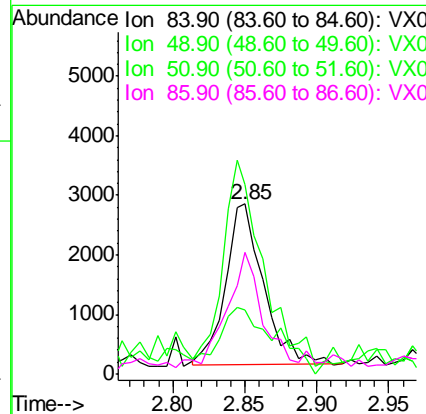
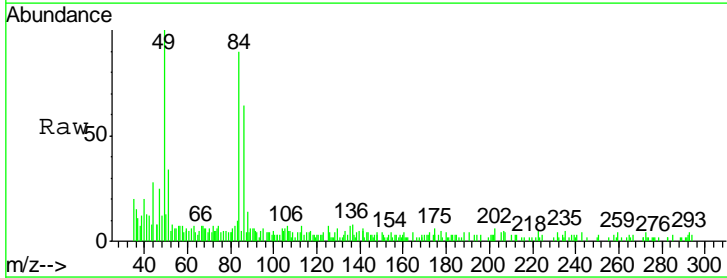
Instrument : MSVOA_X
 Client Sampled : C0B37

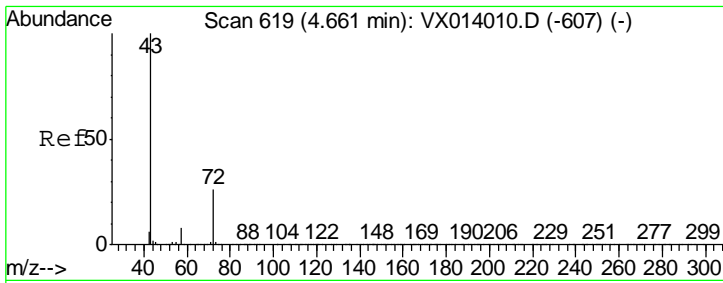
Tgt Ion	Resp	Lower	Upper
76	100		
78	0.0	7.2	10.8#



#20
 Methylene Chloride
 Concen: 0.783 ug/l
 RT: 2.85 min Scan# 322
 Delta R.T. 0.00 min
 Lab File: VX014239.D
 Acq: 24 Dec 2019 12:55

Tgt Ion	Resp	Lower	Upper
84	100		
49	113.5	95.8	143.6
51	33.0	29.8	44.8
86	68.5	50.8	76.2

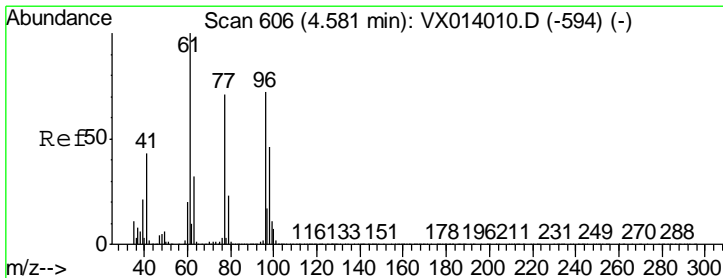
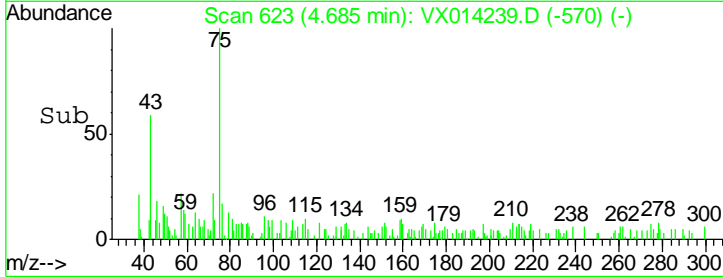
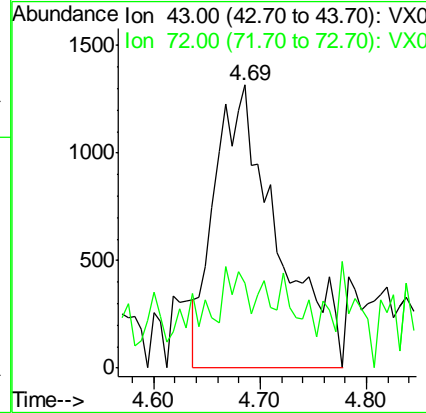
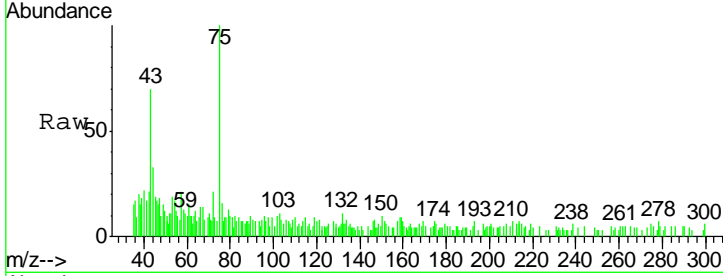




#25
 2-Butanone
 Concen: 1.088 ug/l
 RT: 4.69 min Scan# 623
 Delta R.T. 0.02 min
 Lab File: VX014239.D
 Acq: 24 Dec 2019 12:55

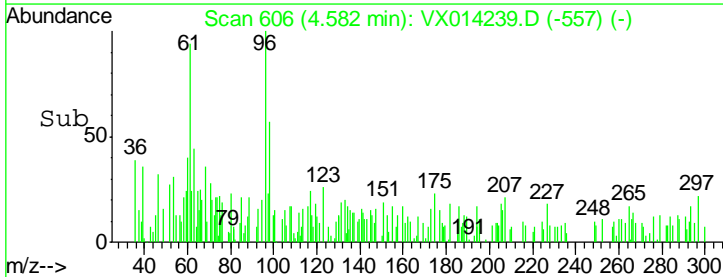
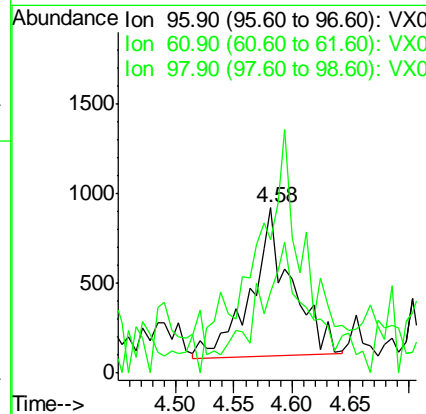
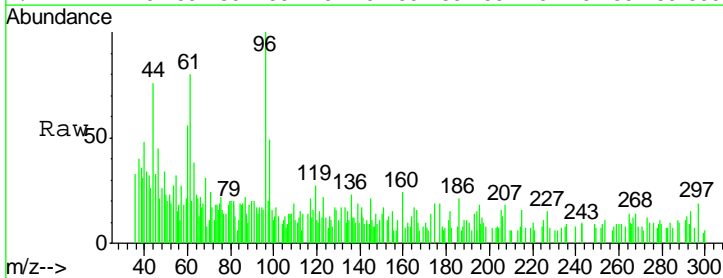
Instrument :
 MSVOA_X
 ClientSampled :
 C0B37

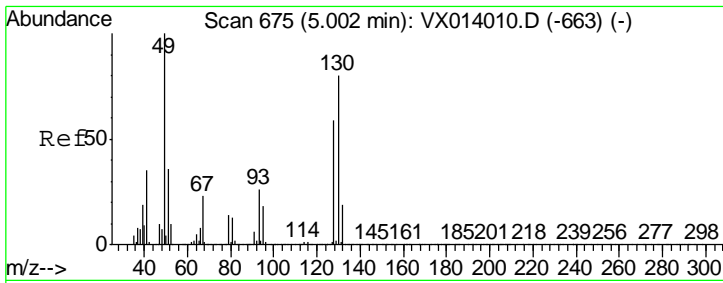
Tgt Ion	Resp	Lower	Upper
43	100		
72	3.6	21.0	31.4#



#27
 cis-1,2-Dichloroethene
 Concen: 0.300 ug/l
 RT: 4.58 min Scan# 606
 Delta R.T. 0.00 min
 Lab File: VX014239.D
 Acq: 24 Dec 2019 12:55

Tgt Ion	Resp	Lower	Upper
96	100		
61	148.0	0.0	288.4
98	75.0	0.0	129.6

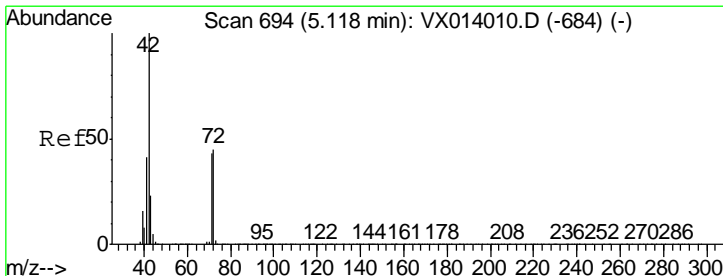
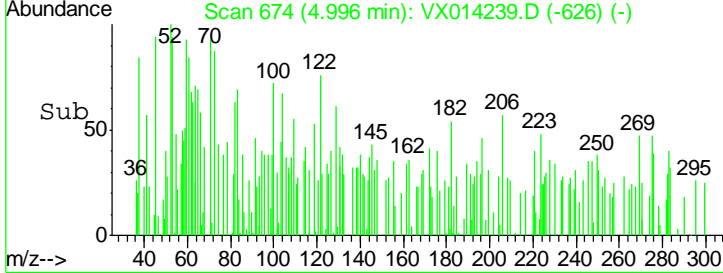
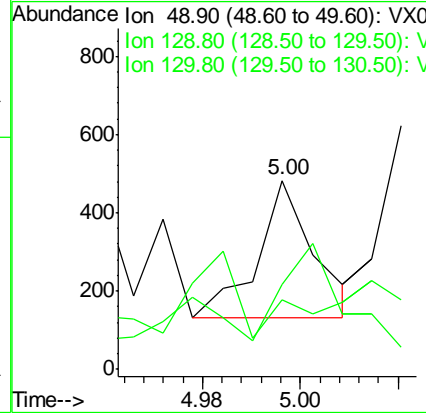
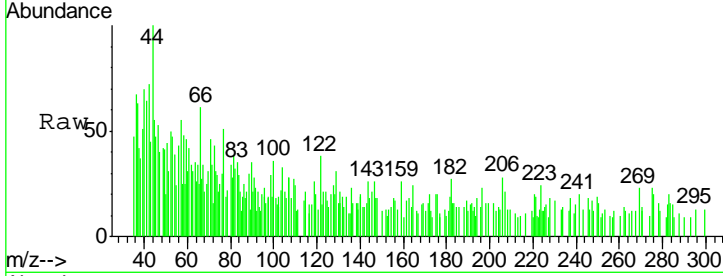




#28
 Bromochloromethane
 Concen: 0.523 ug/l
 RT: 5.00 min Scan# 674
 Delta R.T. -0.01 min
 Lab File: VX014239.D
 Acq: 24 Dec 2019 12:55

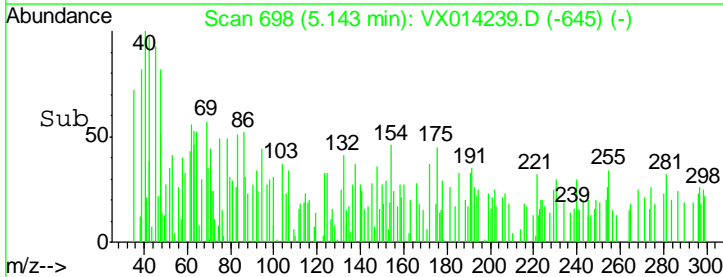
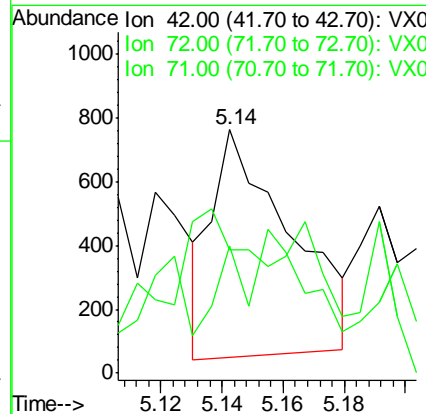
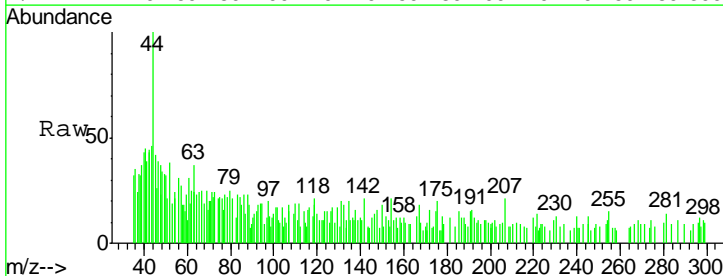
Instrument :
 MSVOA_X
 ClientSampled :
 C0B37

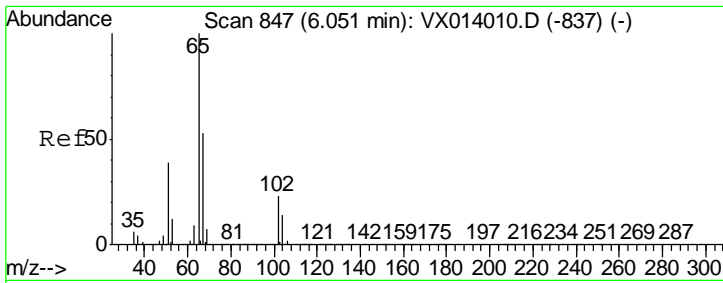
Tgt Ion	Resp	Lower	Upper
49	100		
129	0.0	0.0	5.0
130	84.5	64.6	97.0



#29
 Tetrahydrofuran
 Concen: 0.455 ug/l
 RT: 5.14 min Scan# 698
 Delta R.T. 0.02 min
 Lab File: VX014239.D
 Acq: 24 Dec 2019 12:55

Tgt Ion	Resp	Lower	Upper
42	100		
72	52.6	35.8	53.8
71	40.0	33.6	50.4

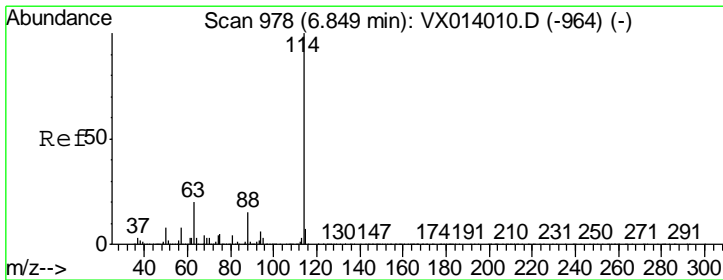
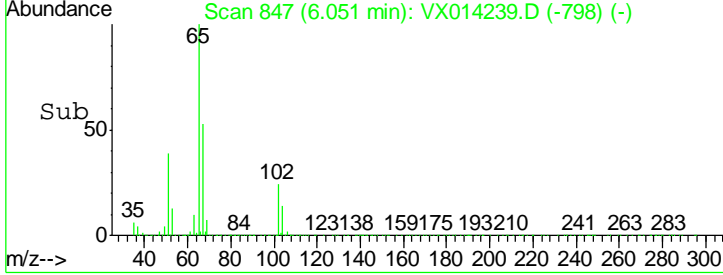
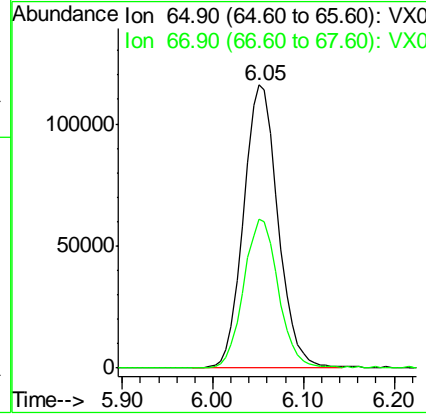
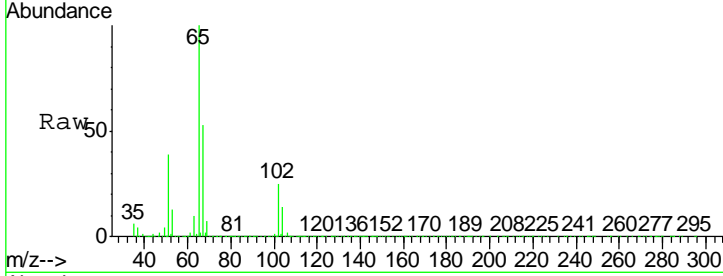




#33
 1,2-Dichloroethane-d4
 Concen: 48.992 ug/l
 RT: 6.05 min Scan# 847
 Delta R.T. 0.00 min
 Lab File: VX014239.D
 Acq: 24 Dec 2019 12:55

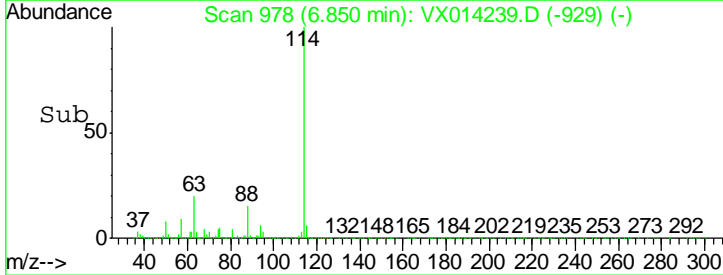
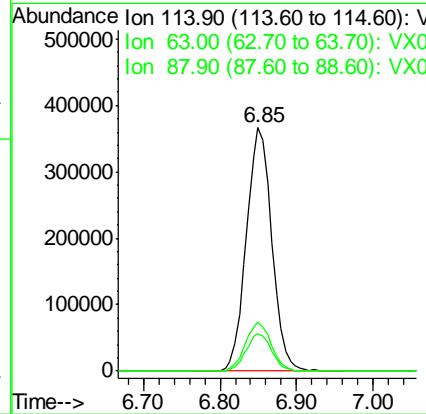
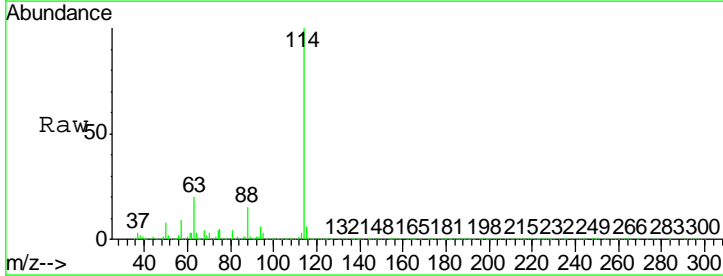
Instrument :
 MSVOA_X
 ClientSampled :
 C0B37

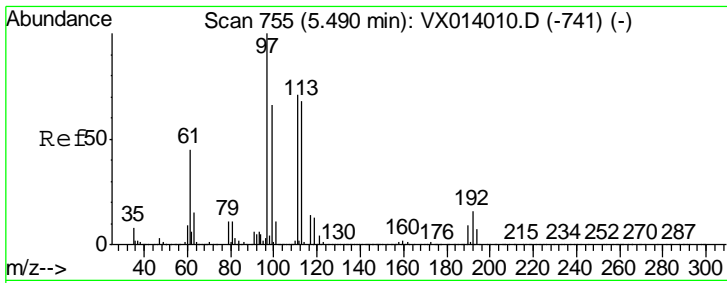
Tgt Ion	Resp	Lower	Upper
65	100		
67	53.1	0.0	106.4



#34
 1,4-Difluorobenzene
 Concen: 50.000 ug/l
 RT: 6.85 min Scan# 978
 Delta R.T. 0.00 min
 Lab File: VX014239.D
 Acq: 24 Dec 2019 12:55

Tgt Ion	Resp	Lower	Upper
114	100		
63	20.1	0.0	40.8
88	15.4	0.0	30.4

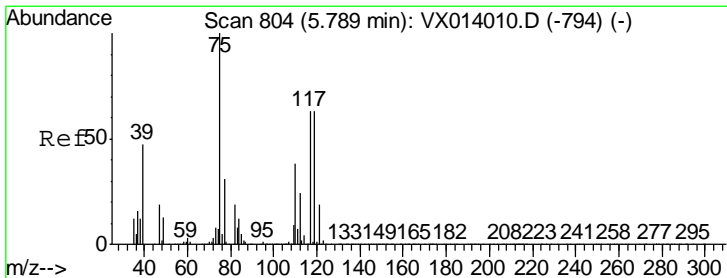
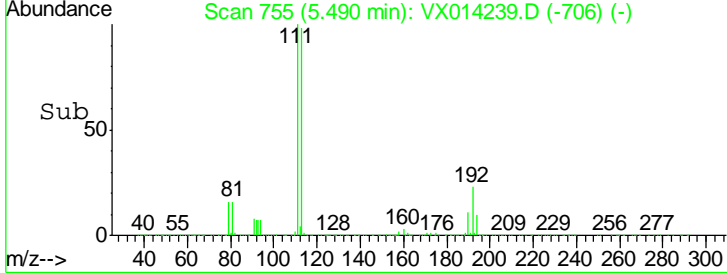
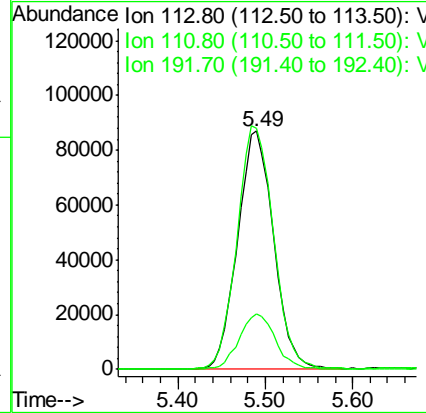
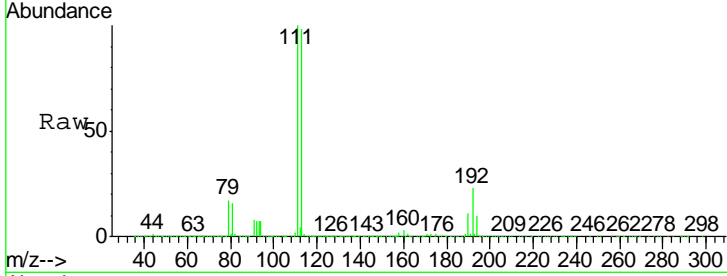




#35
 Dibromofluoromethane
 Concen: 48.363 ug/l
 RT: 5.49 min Scan# 755
 Delta R.T. 0.00 min
 Lab File: VX014239.D
 Acq: 24 Dec 2019 12:55

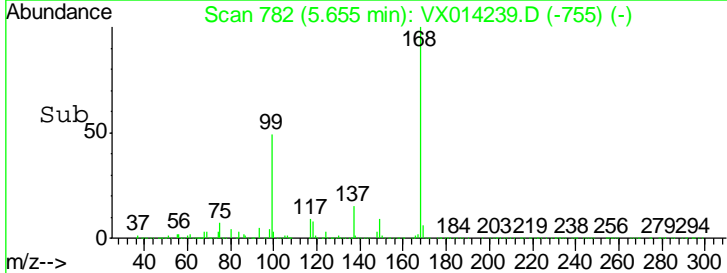
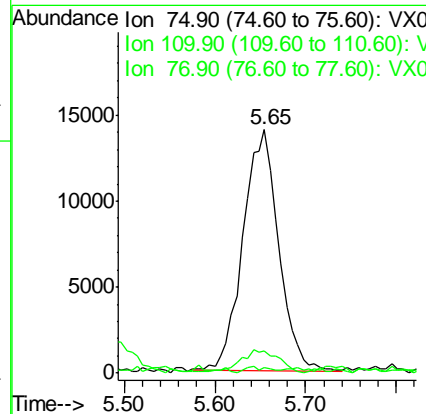
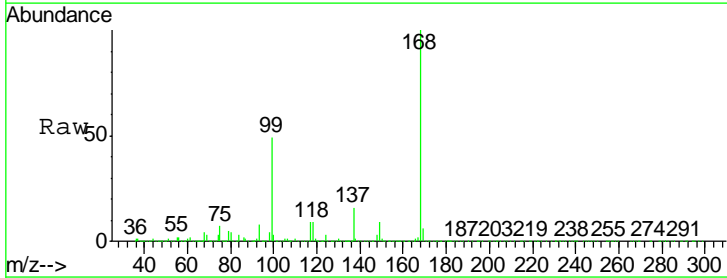
Instrument :
 MSVOA_X
 ClientSampled :
 C0B37

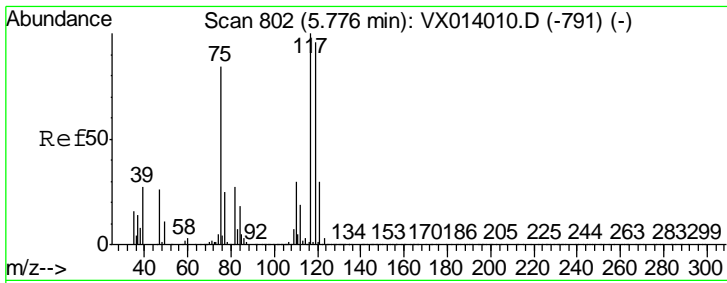
Tgt Ion	Resp	Lower	Upper
113	248983		
111	103.6	82.0	123.0
192	23.4	19.3	28.9



#36
 1,1-Dichloropropene
 Concen: 4.949 ug/l
 RT: 5.65 min Scan# 782
 Delta R.T. -0.13 min
 Lab File: VX014239.D
 Acq: 24 Dec 2019 12:55

Tgt Ion	Resp	Lower	Upper
75	38457		
110	10.4	18.3	54.9#
77	1.0	24.8	37.2#

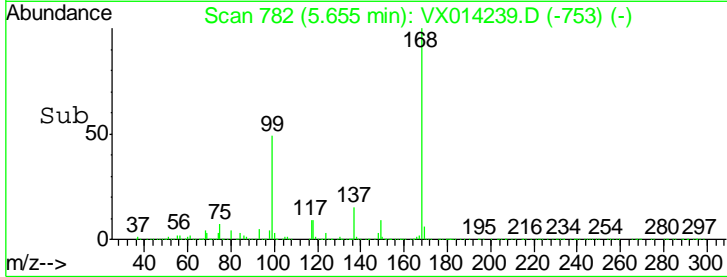
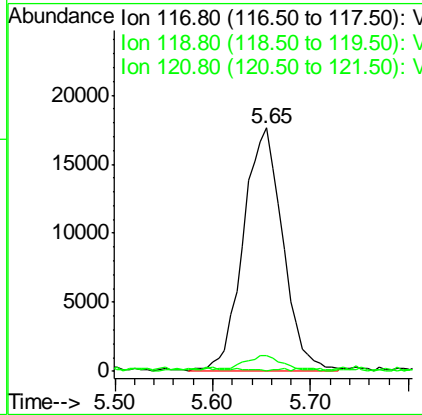
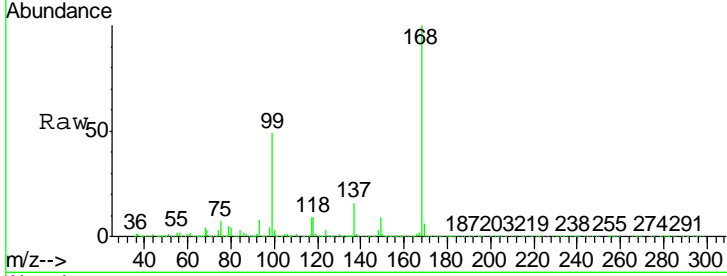




#38
 Carbon Tetrachloride
 Concen: 6.995 ug/l
 RT: 5.65 min Scan# 782
 Delta R.T. -0.12 min
 Lab File: VX014239.D
 Acq: 24 Dec 2019 12:55

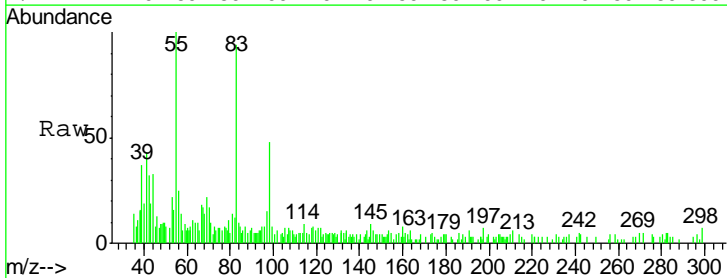
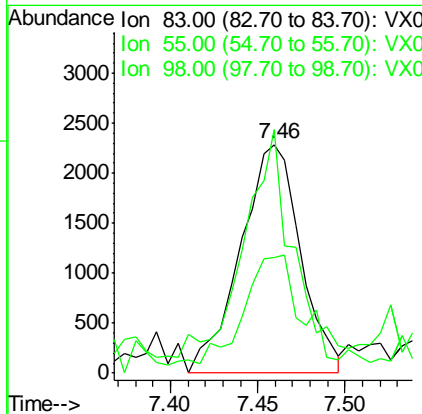
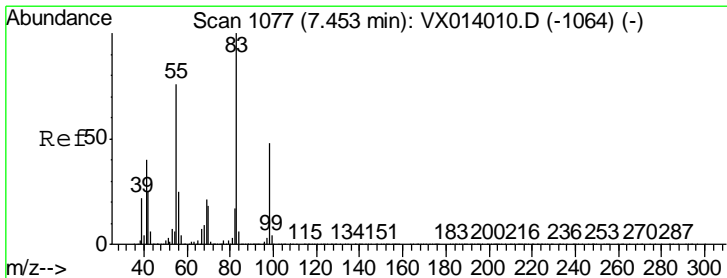
Instrument :
 MSVOA_X
 ClientSampled :
 C0B37

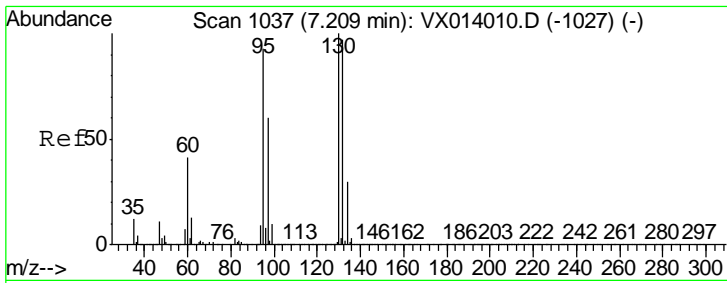
Tgt Ion	Resp	Lower	Upper
117	49519		
119	5.8	76.2	114.4#
121	0.0	23.6	35.4#



#39
 Methylcyclohexane
 Concen: 0.571 ug/l
 RT: 7.46 min Scan# 1078
 Delta R.T. 0.01 min
 Lab File: VX014239.D
 Acq: 24 Dec 2019 12:55

Tgt Ion	Resp	Lower	Upper
83	5478		
55	96.5	61.0	91.6#
98	48.6	38.6	57.8





#44

Trichloroethene

Concen: 8.777 ug/l

RT: 7.20 min Scan# 1036

Delta R.T. -0.01 min

Lab File: VX014239.D

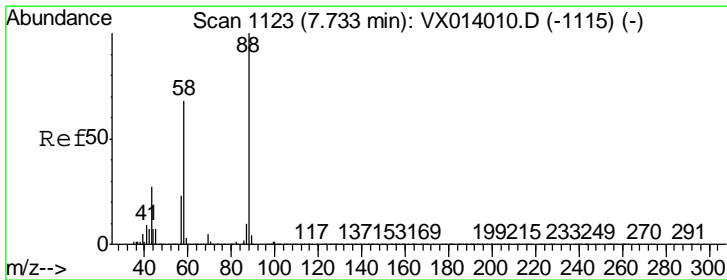
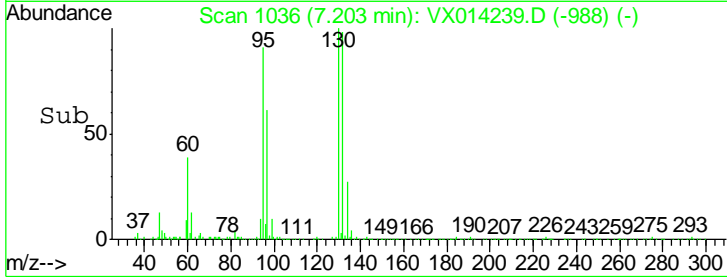
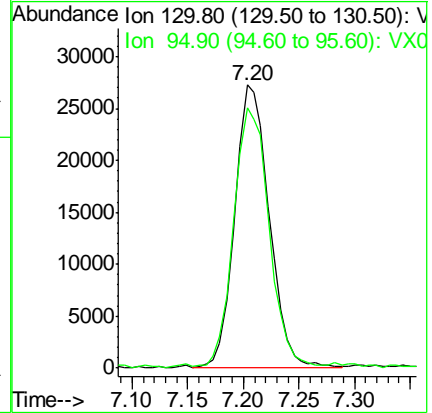
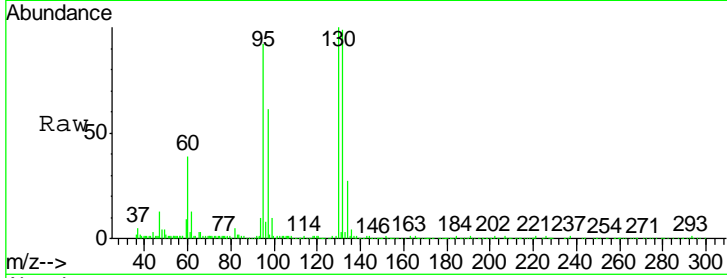
Acq: 24 Dec 2019 12:55

Instrument :
MSVOA_X
ClientSampled :
C0B37

Tgt Ion: 130 Resp: 57961

Ion Ratio Lower Upper

130	100		
95	91.9	0.0	185.6



#49

1,4-Dioxane

Concen: 6.155 ug/l

RT: 7.77 min Scan# 1129

Delta R.T. 0.04 min

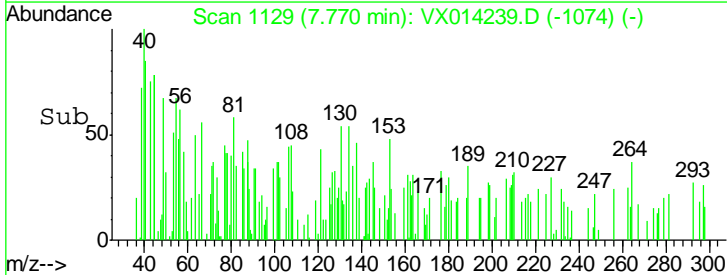
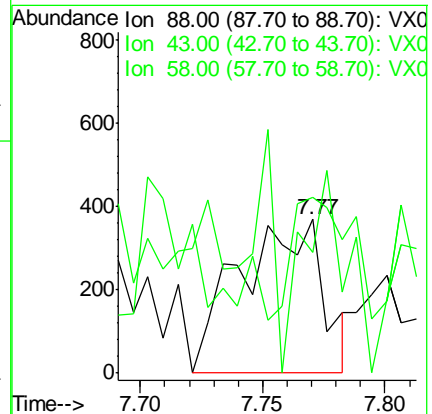
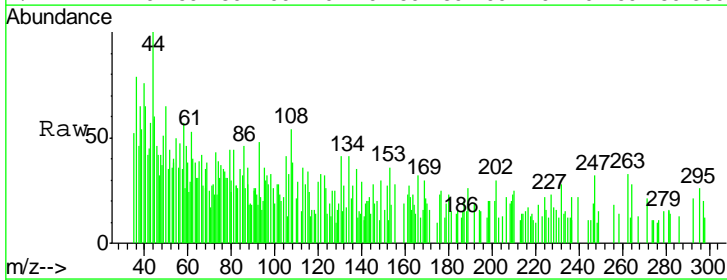
Lab File: VX014239.D

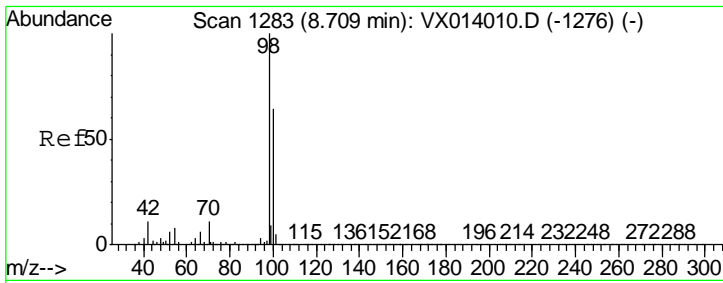
Acq: 24 Dec 2019 12:55

Tgt Ion: 88 Resp: 871

Ion Ratio Lower Upper

88	100		
43	68.8	26.5	39.7#
58	61.5	56.8	85.2

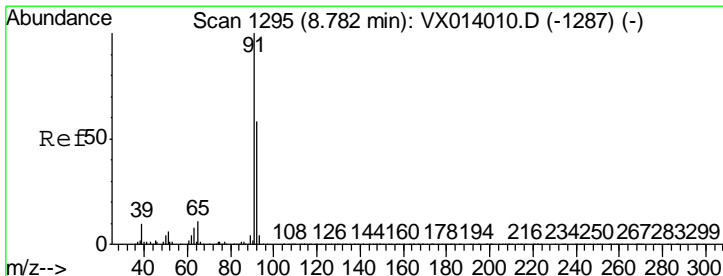
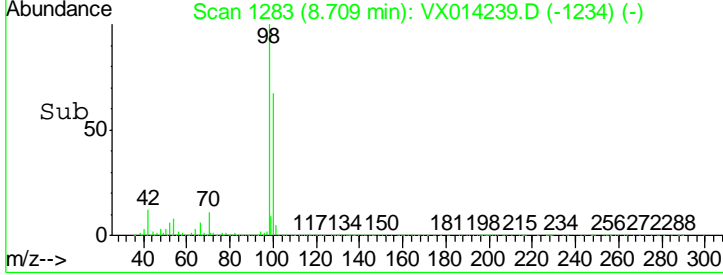
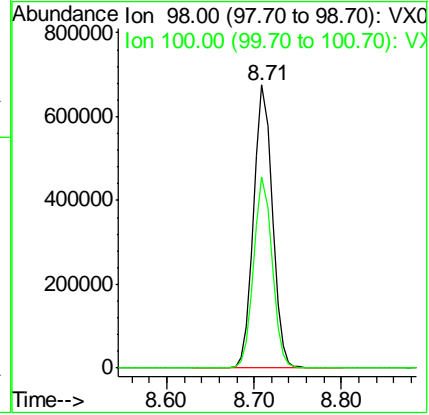
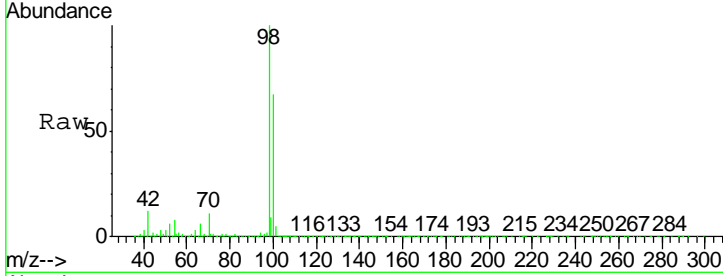




#50
 Toluene-d8
 Concen: 50.080 ug/l
 RT: 8.71 min Scan# 1283
 Delta R.T. 0.00 min
 Lab File: VX014239.D
 Acq: 24 Dec 2019 12:55

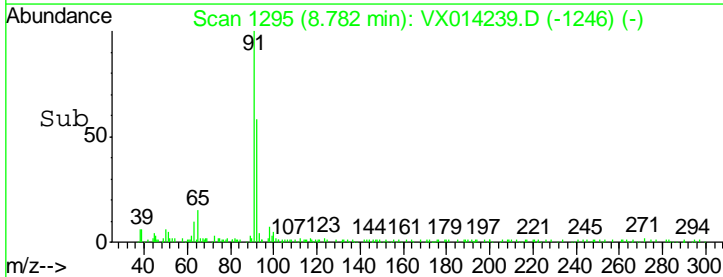
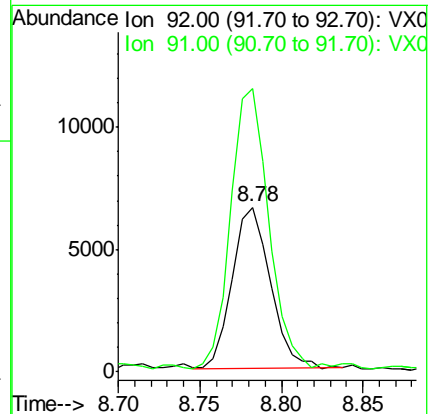
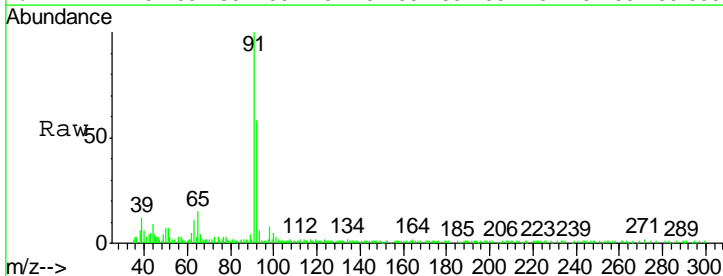
Instrument :
 MSVOA_X
 ClientSampled :
 C0B37

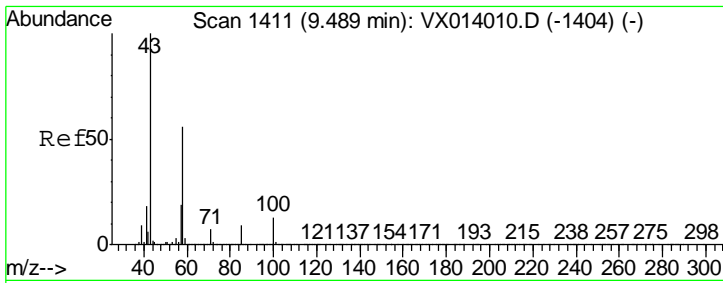
Tgt Ion: 98 Resp: 1003766
 Ion Ratio Lower Upper
 98 100
 100 66.1 52.9 79.3



#52
 Toluene
 Concen: 0.717 ug/l
 RT: 8.78 min Scan# 1295
 Delta R.T. 0.00 min
 Lab File: VX014239.D
 Acq: 24 Dec 2019 12:55

Tgt Ion: 92 Resp: 10830
 Ion Ratio Lower Upper
 92 100
 91 172.6 136.2 204.4

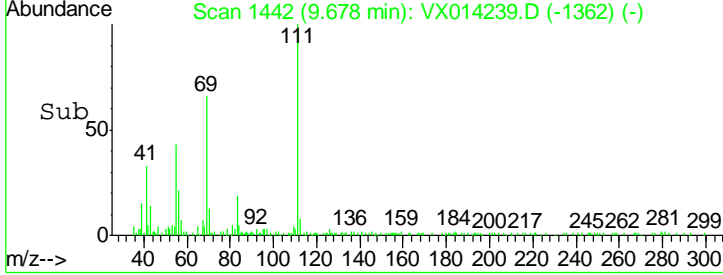
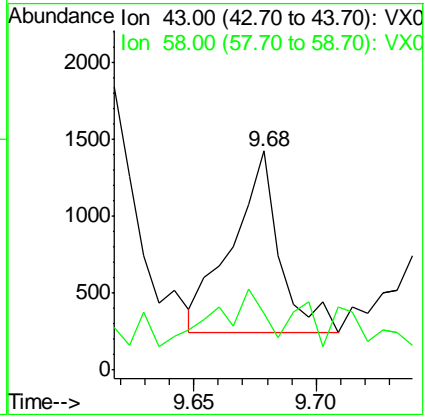
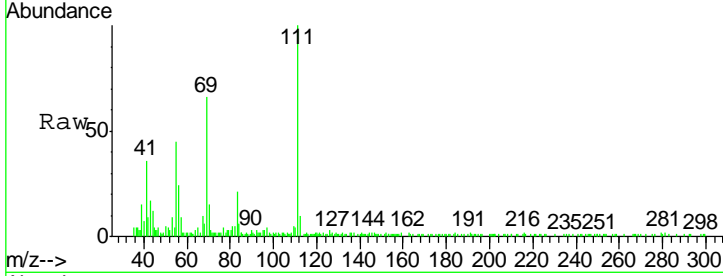




#59
 2-Hexanone
 Concen: 0.221 ug/l
 RT: 9.68 min Scan# 1442
 Delta R.T. 0.19 min
 Lab File: VX014239.D
 Acq: 24 Dec 2019 12:55

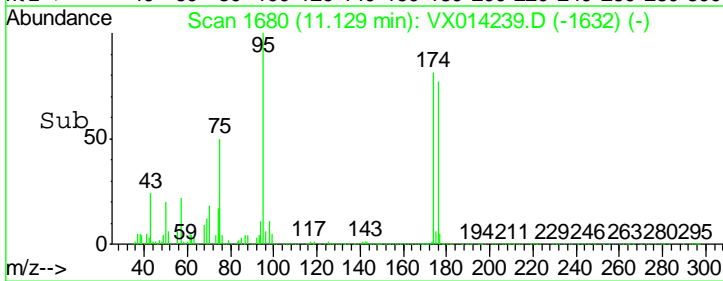
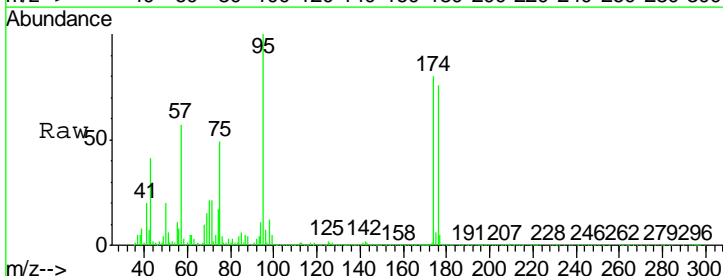
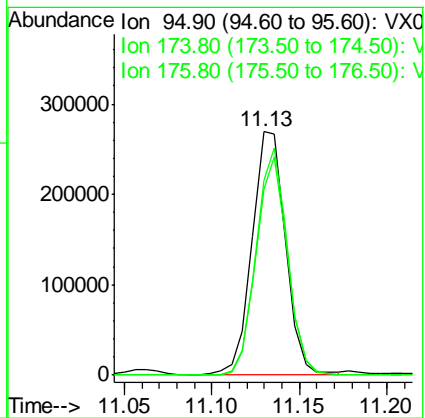
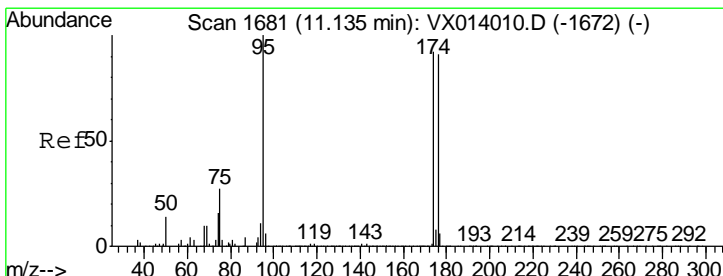
Instrument :
 MSVOA_X
ClientSampled :
 C0B37

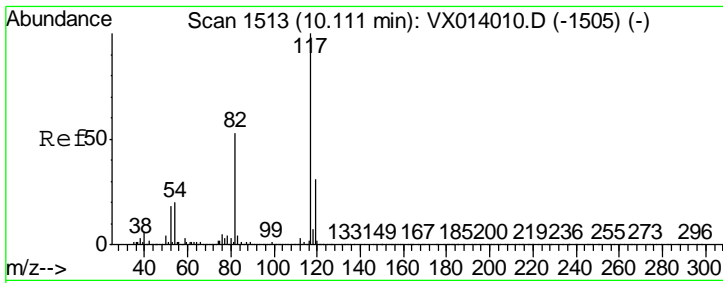
Tgt Ion: 43 Resp: 1584
 Ion Ratio Lower Upper
 43 100
 58 32.7 28.0 84.0



#62
 4-Bromofluorobenzene
 Concen: 49.084 ug/l
 RT: 11.13 min Scan# 1680
 Delta R.T. -0.01 min
 Lab File: VX014239.D
 Acq: 24 Dec 2019 12:55

Tgt Ion: 95 Resp: 359623
 Ion Ratio Lower Upper
 95 100
 174 88.1 0.0 175.8
 176 84.3 0.0 173.0

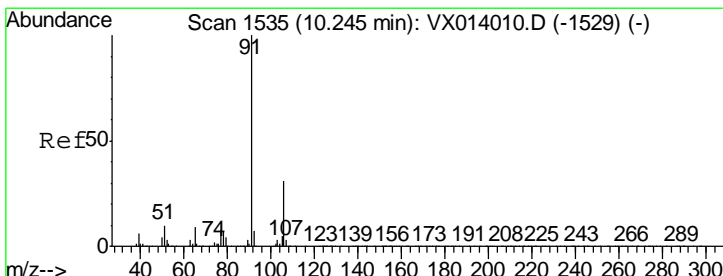
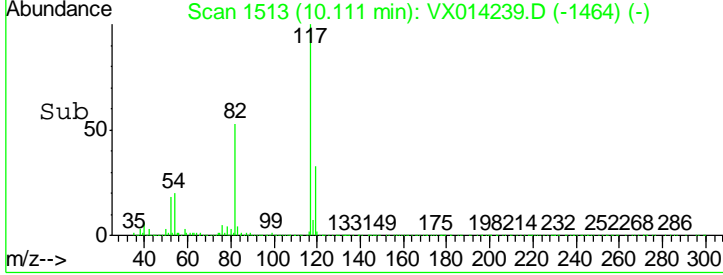
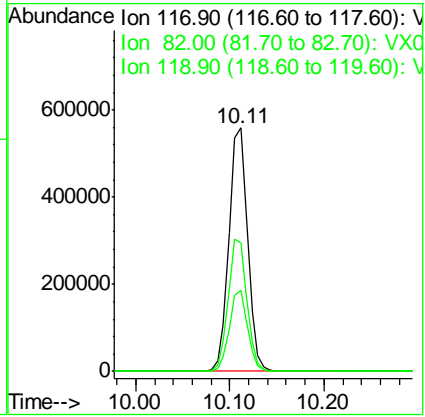
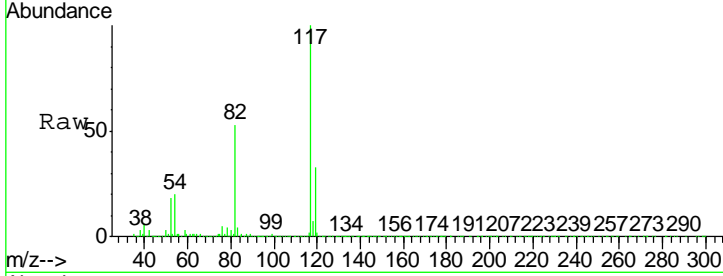




#63
 Chlorobenzene-d5
 Concen: 50.000 ug/l
 RT: 10.11 min Scan# 1513
 Delta R.T. 0.00 min
 Lab File: VX014239.D
 Acq: 24 Dec 2019 12:55

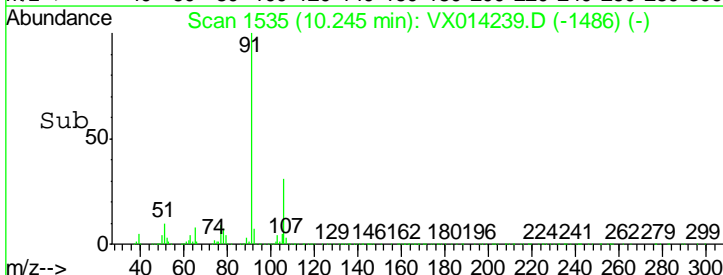
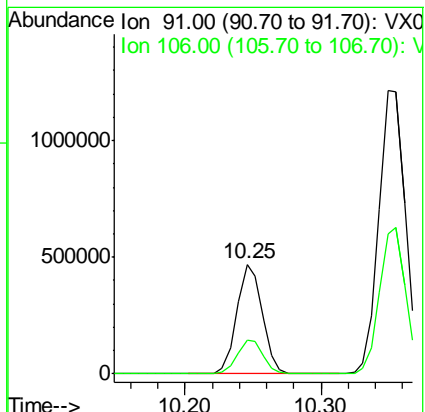
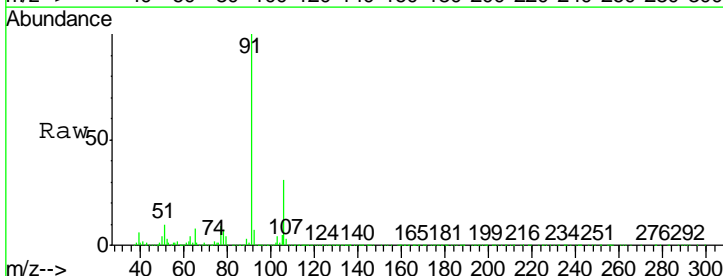
Instrument : MSVOA_X
 ClientSampled : C0B37

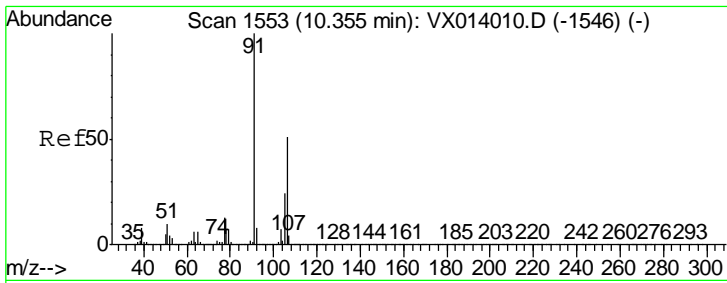
Tgt Ion	Resp	Lower	Upper
117	774279		
82	52.8	42.2	63.4
119	33.1	25.1	37.7



#67
 Ethyl Benzene
 Concen: 21.553 ug/l
 RT: 10.25 min Scan# 1535
 Delta R.T. 0.00 min
 Lab File: VX014239.D
 Acq: 24 Dec 2019 12:55

Tgt Ion	Resp	Lower	Upper
91	610024		
106	31.4	25.0	37.6

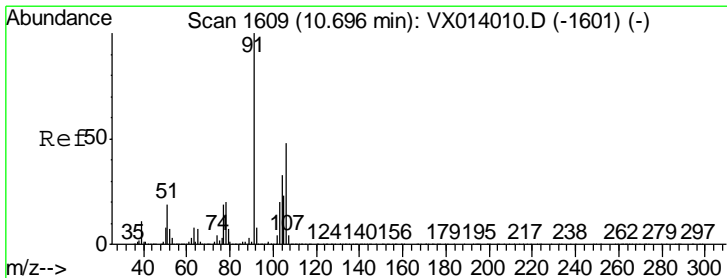
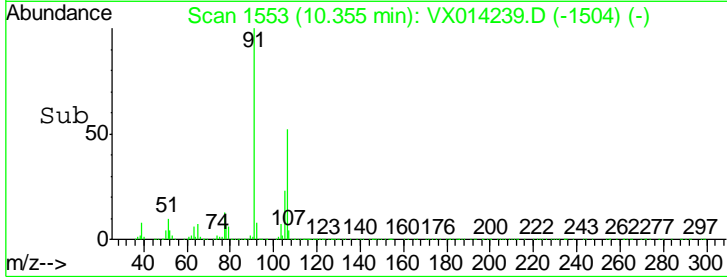
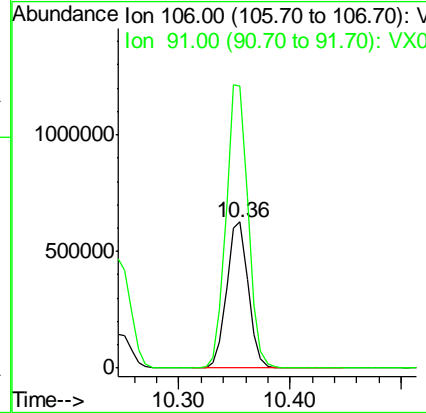
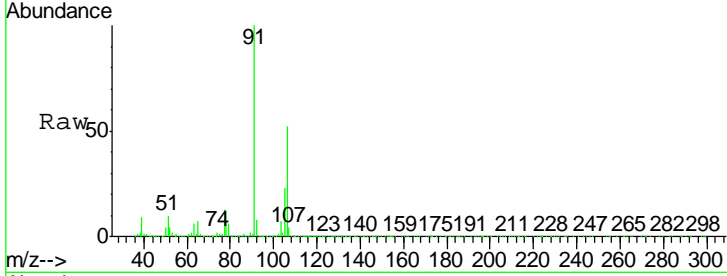




#68
 m/p-Xylenes
 Concen: 77.018 ug/l
 RT: 10.36 min Scan# 1553
 Delta R.T. 0.00 min
 Lab File: VX014239.D
 Acq: 24 Dec 2019 12:55

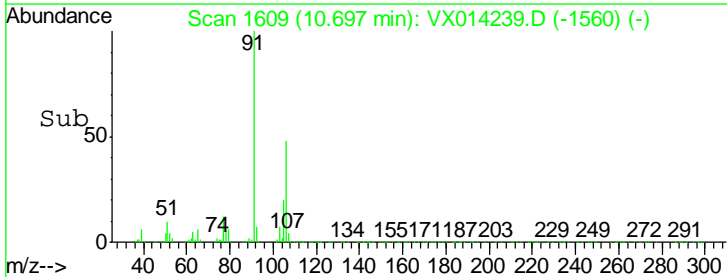
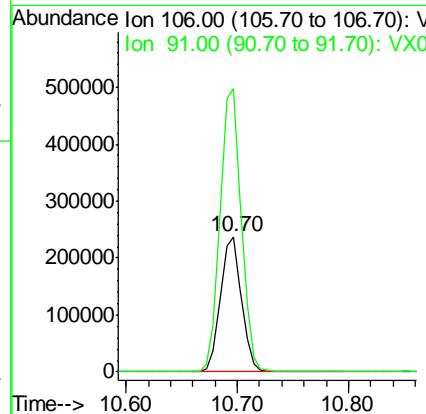
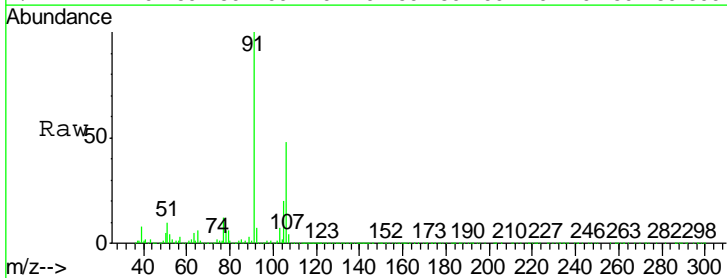
Instrument :
 MSVOA_X
 ClientSampled :
 C0B37

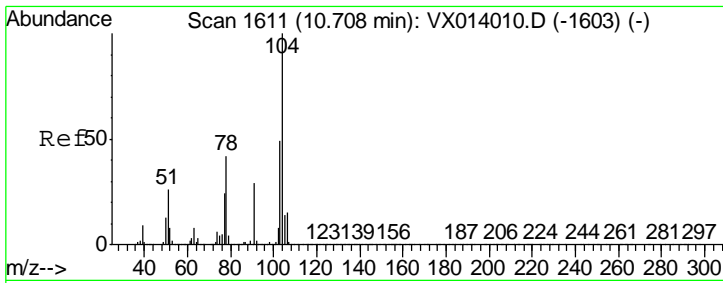
Tgt Ion:106 Resp: 838419
 Ion Ratio Lower Upper
 106 100
 91 198.0 158.6 238.0



#69
 o-Xylene
 Concen: 29.042 ug/l
 RT: 10.70 min Scan# 1609
 Delta R.T. 0.00 min
 Lab File: VX014239.D
 Acq: 24 Dec 2019 12:55

Tgt Ion:106 Resp: 310072
 Ion Ratio Lower Upper
 106 100
 91 211.1 104.2 312.6

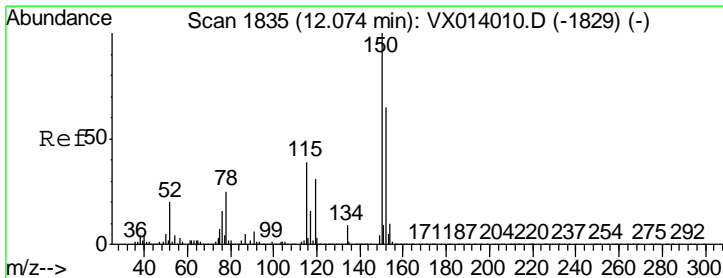
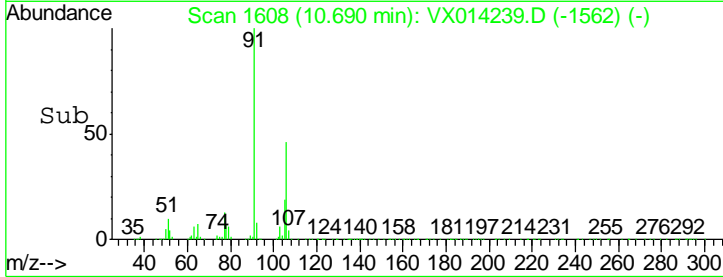
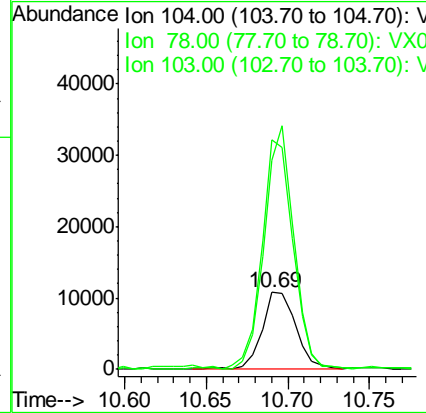
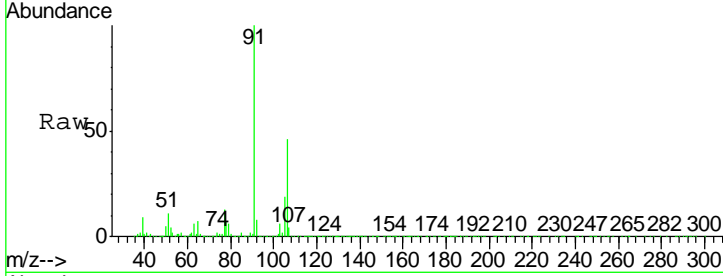




#70
 Styrene
 Concen: 0.854 ug/l
 RT: 10.69 min Scan# 1608
 Delta R.T. -0.02 min
 Lab File: VX014239.D
 Acq: 24 Dec 2019 12:55

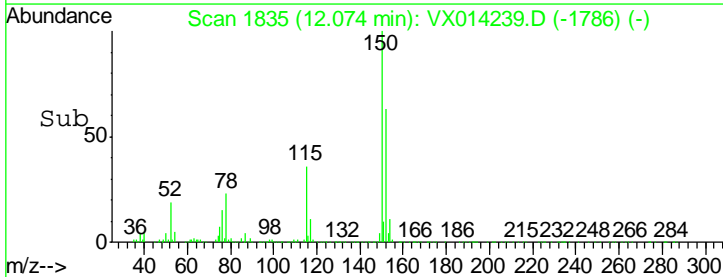
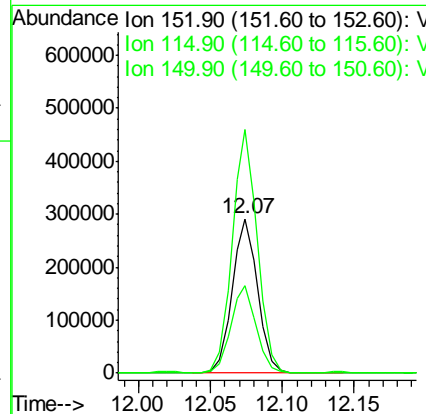
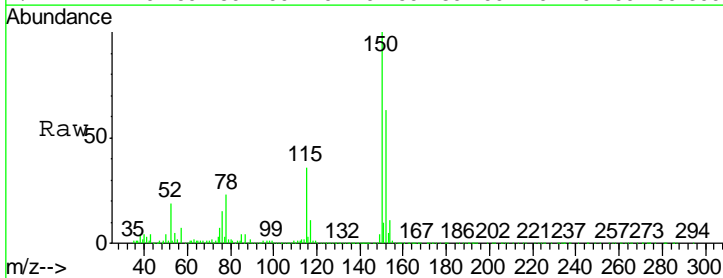
Instrument :
 MSVOA_X
 ClientSampled :
 C0B37

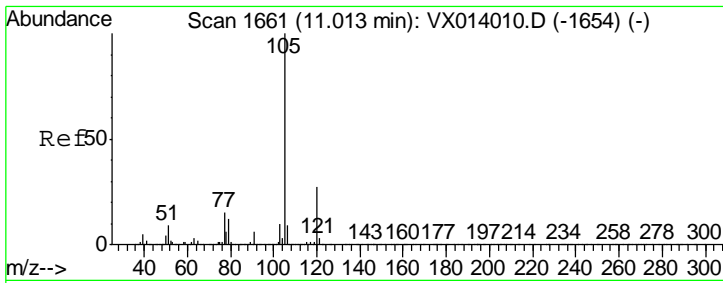
Tgt Ion	Resp	Lower	Upper
104	15424		
78	279.6	38.5	57.7#
103	274.8	42.9	64.3#



#72
 1,4-Dichlorobenzene-d4
 Concen: 50.000 ug/l
 RT: 12.07 min Scan# 1835
 Delta R.T. 0.00 min
 Lab File: VX014239.D
 Acq: 24 Dec 2019 12:55

Tgt Ion	Resp	Lower	Upper
152	359142		
115	56.3	38.3	114.9
150	156.0	0.0	345.4

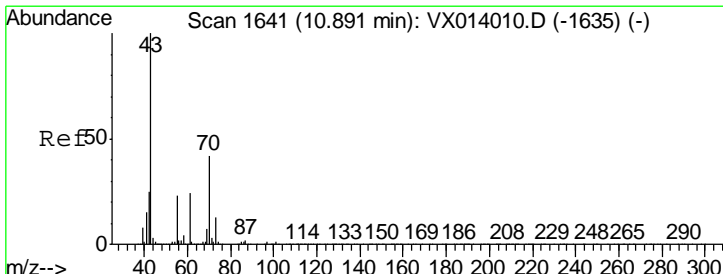
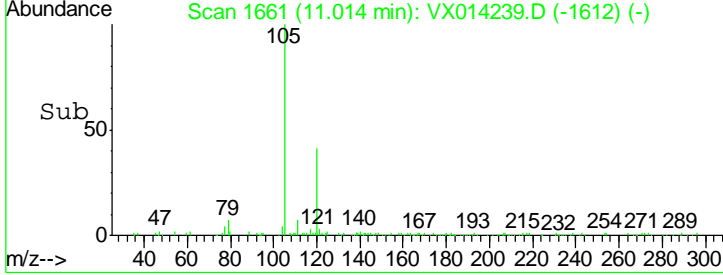
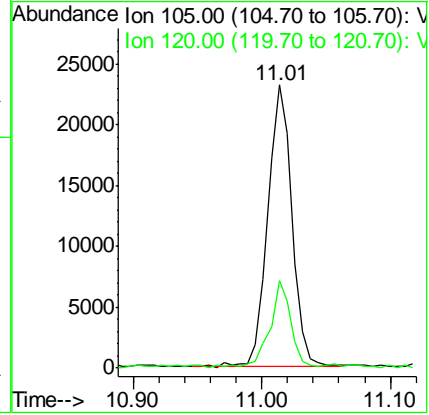
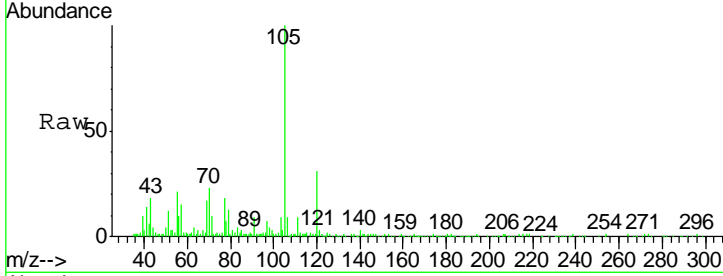




#73
 Isopropylbenzene
 Concen: 1.192 ug/l
 RT: 11.01 min Scan# 1661
 Delta R.T. 0.00 min
 Lab File: VX014239.D
 Acq: 24 Dec 2019 12:55

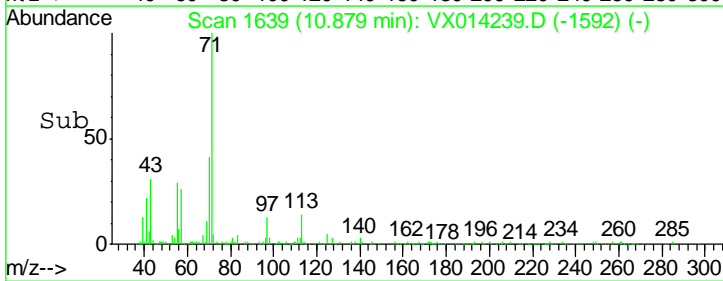
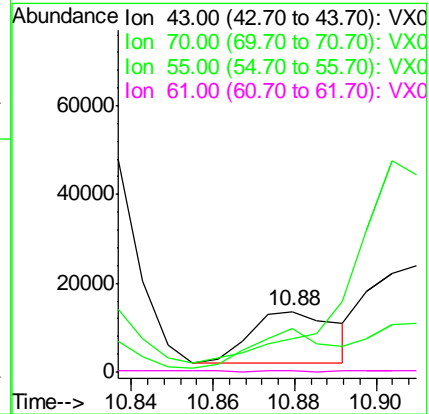
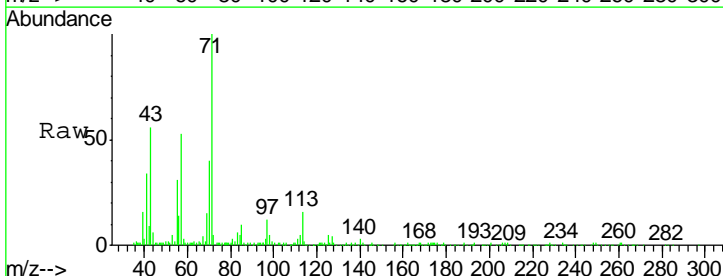
Instrument : MSVOA_X
 ClientSampled : C0B37

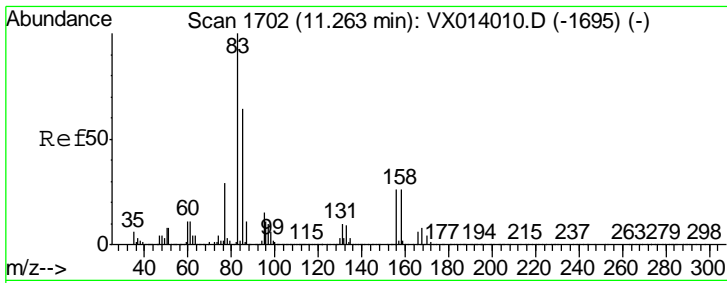
Tgt Ion	Resp	Lower	Upper
105	100		
120	25.5	13.5	40.4



#74
 N-amyl acetate
 Concen: 1.469 ug/l
 RT: 10.88 min Scan# 1639
 Delta R.T. -0.01 min
 Lab File: VX014239.D
 Acq: 24 Dec 2019 12:55

Tgt Ion	Resp	Lower	Upper
43	100		
70	66.4	34.4	51.6#
55	0.0	19.1	28.7#
61	0.0	19.7	29.5#

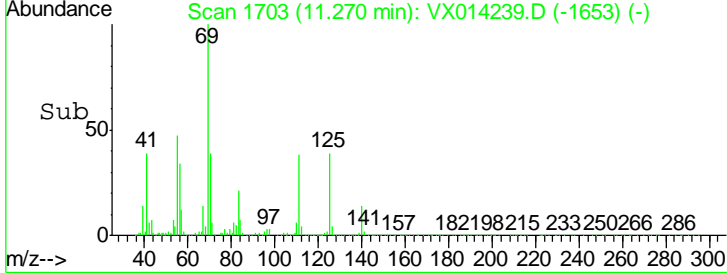
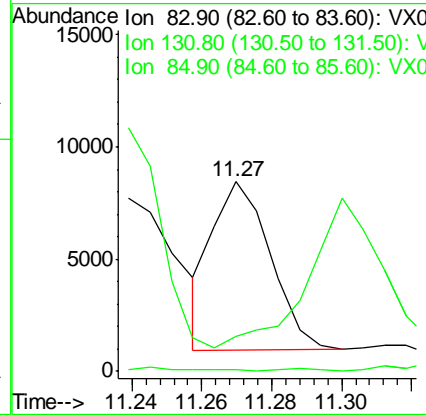
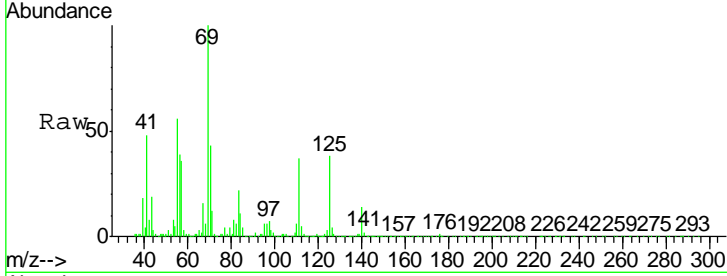




#75
 1,1,2,2-Tetrachloroethane
 Concen: 0.982 ug/l
 RT: 11.27 min Scan# 1703
 Delta R.T. 0.01 min
 Lab File: VX014239.D
 Acq: 24 Dec 2019 12:55

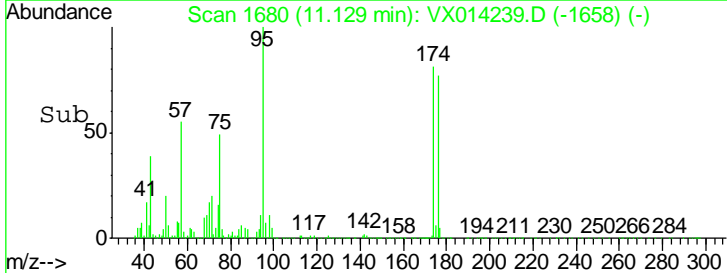
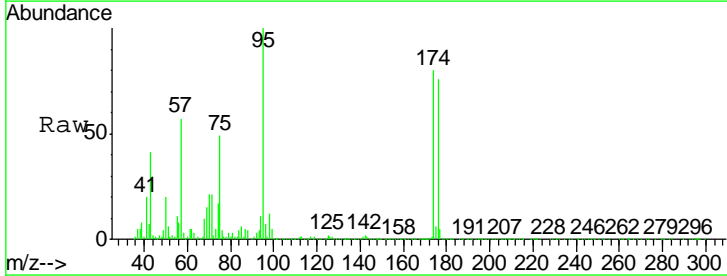
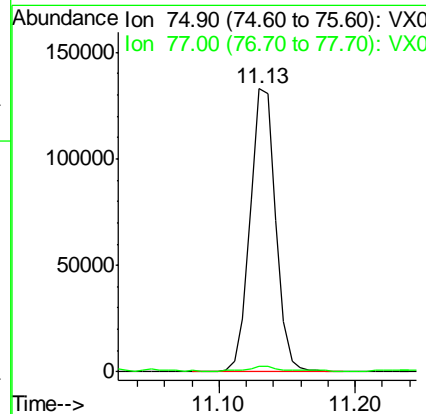
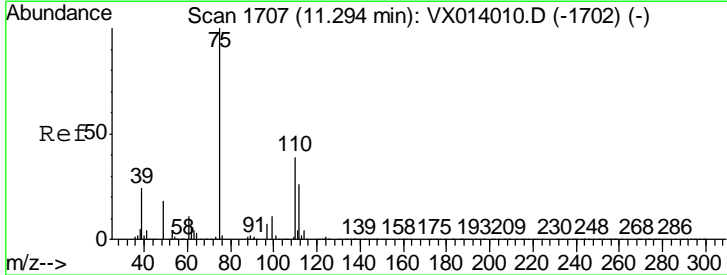
Instrument :
 MSVOA_X
 ClientSampled :
 C0B37

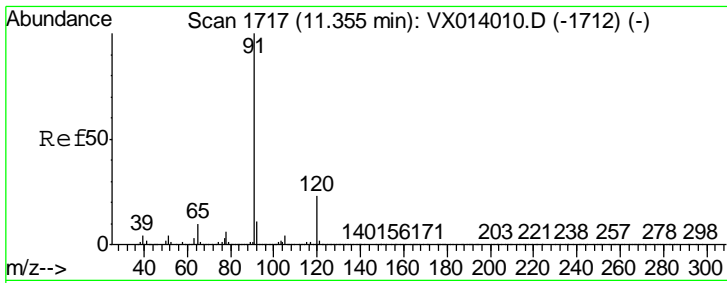
Tgt Ion	Resp	Lower	Upper
83	100		
131	0.0	5.1	15.2#
85	0.0	31.9	95.7#



#76
 1,2,3-Trichloropropane
 Concen: 22.402 ug/l
 RT: 11.13 min Scan# 1680
 Delta R.T. -0.16 min
 Lab File: VX014239.D
 Acq: 24 Dec 2019 12:55

Tgt Ion	Resp	Lower	Upper
75	100		
77	2.3	19.3	57.8#

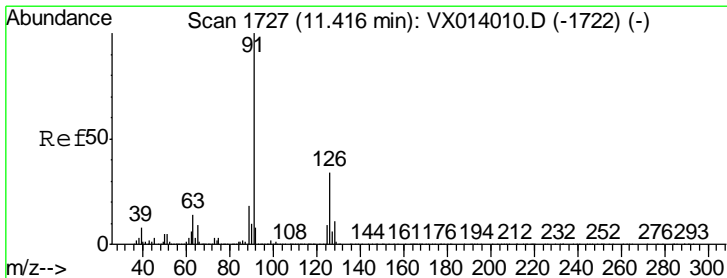
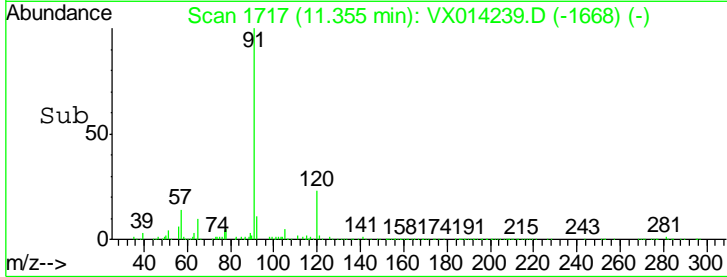
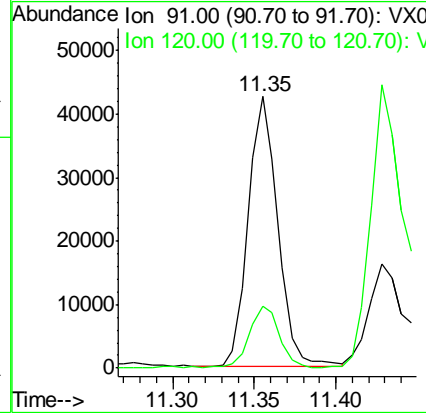
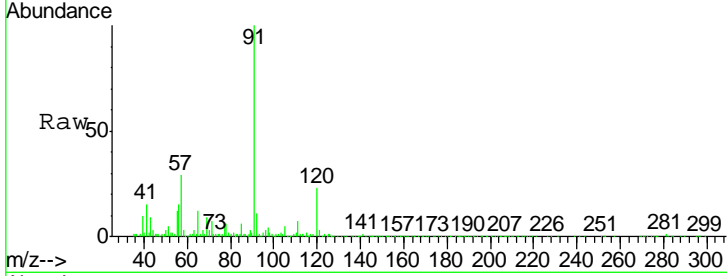




#78
 n-propylbenzene
 Concen: 1.915 ug/l
 RT: 11.35 min Scan# 1717
 Delta R.T. 0.00 min
 Lab File: VX014239.D
 Acq: 24 Dec 2019 12:55

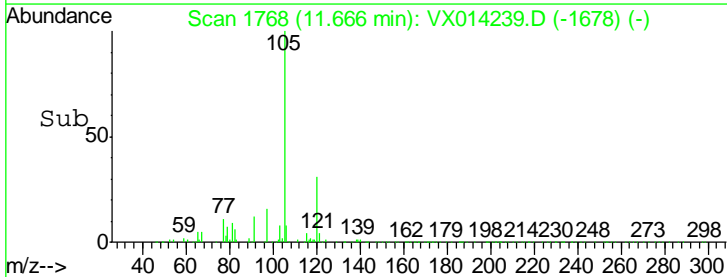
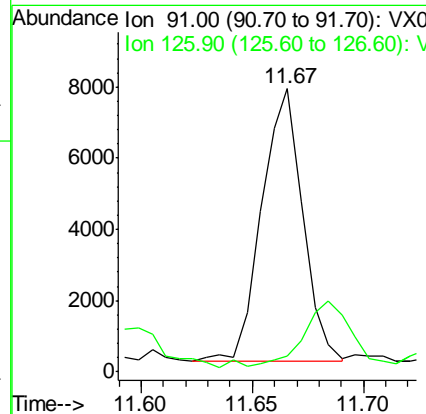
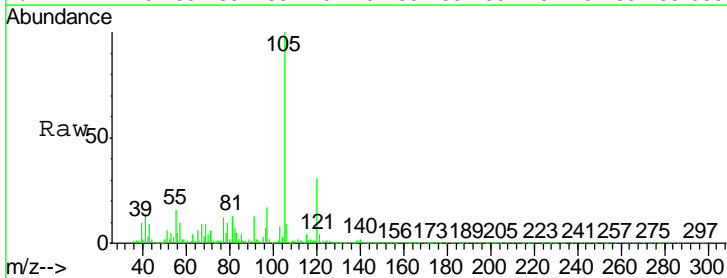
Instrument :
 MSVOA_X
 ClientSampled :
 C0B37

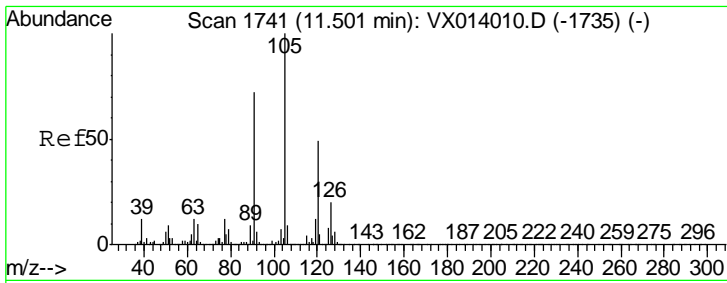
Tgt Ion: 91 Resp: 54325
 Ion Ratio Lower Upper
 91 100
 120 22.9 11.7 35.0



#79
 2-Chlorotoluene
 Concen: 0.565 ug/l
 RT: 11.67 min Scan# 1768
 Delta R.T. 0.25 min
 Lab File: VX014239.D
 Acq: 24 Dec 2019 12:55

Tgt Ion: 91 Resp: 9736
 Ion Ratio Lower Upper
 91 100
 126 22.7 17.2 51.6

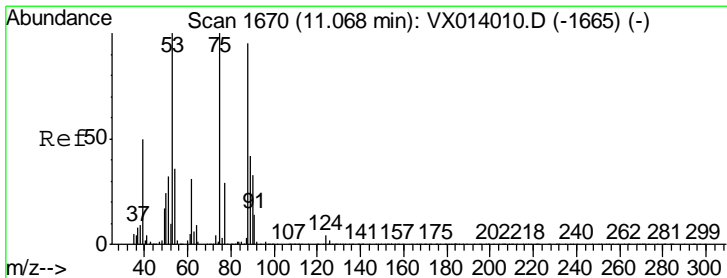
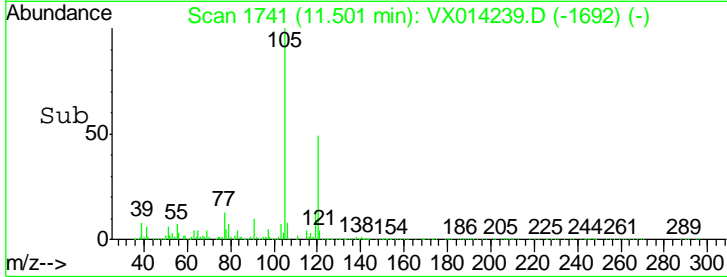
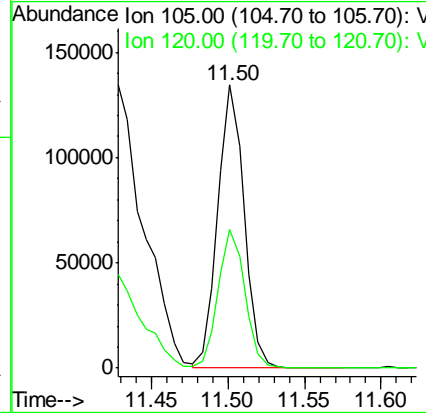
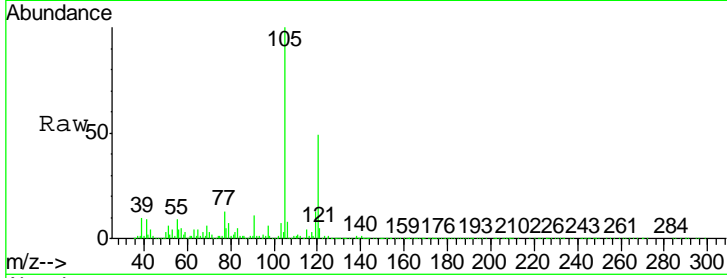




#80
 1,3,5-Trimethylbenzene
 Concen: 7.516 ug/l
 RT: 11.50 min Scan# 1741
 Delta R.T. 0.00 min
 Lab File: VX014239.D
 Acq: 24 Dec 2019 12:55

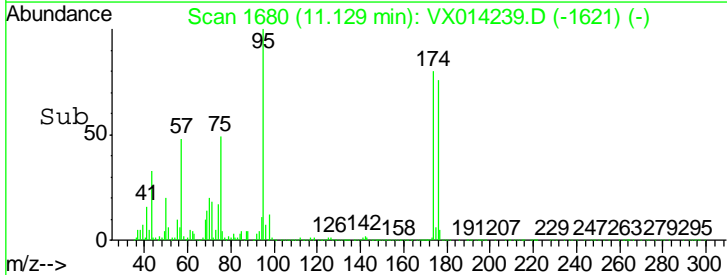
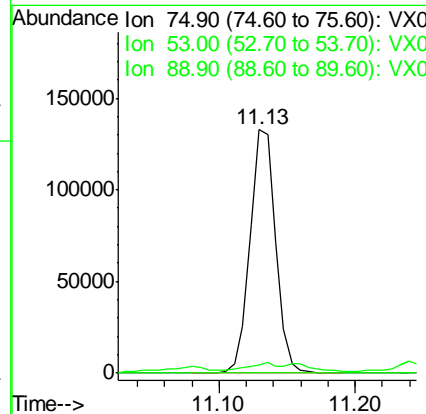
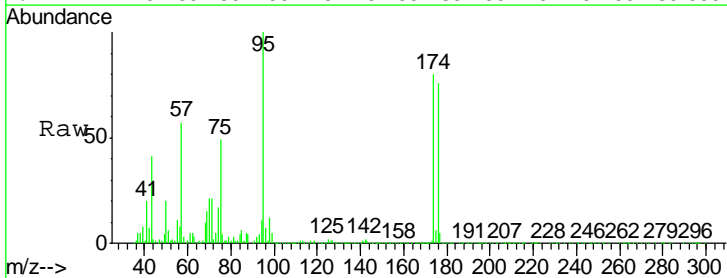
Instrument :
 MSVOA_X
 ClientSampled :
 C0B37

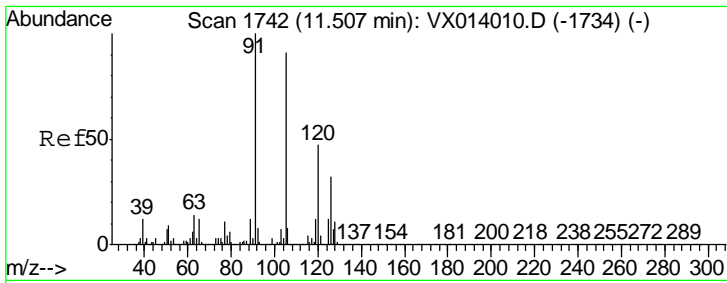
Tgt Ion: 105 Resp: 159951
 Ion Ratio Lower Upper
 105 100
 120 49.5 25.3 75.8



#81
 trans-1,4-Dichloro-2-butene
 Concen: 63.230 ug/l
 RT: 11.13 min Scan# 1680
 Delta R.T. 0.06 min
 Lab File: VX014239.D
 Acq: 24 Dec 2019 12:55

Tgt Ion: 75 Resp: 174667
 Ion Ratio Lower Upper
 75 100
 53 3.1 76.7 115.1#
 89 0.3 34.6 51.8#

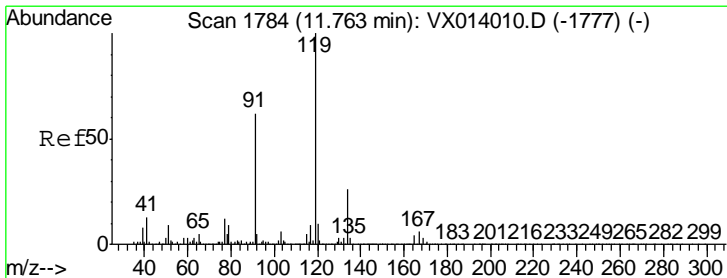
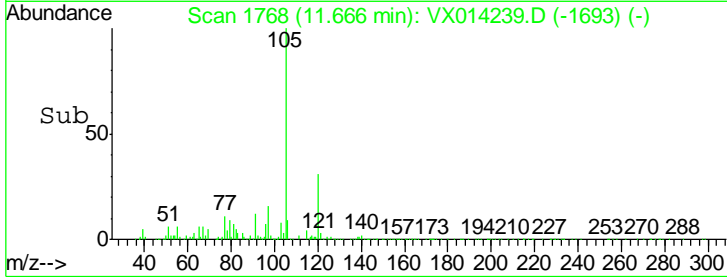
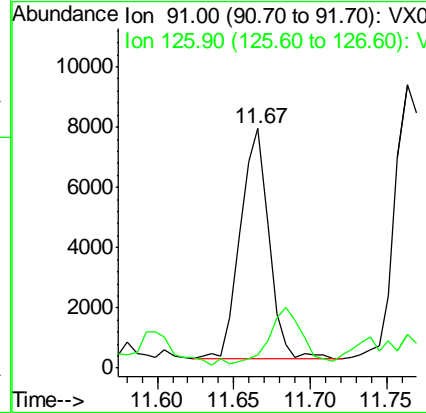
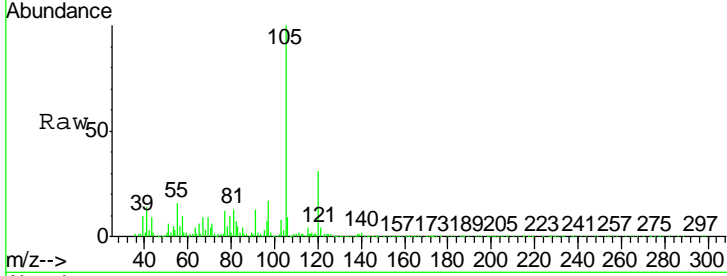




#82
 4-Chlorotoluene
 Concen: 0.495 ug/l
 RT: 11.67 min Scan# 1768
 Delta R.T. 0.16 min
 Lab File: VX014239.D
 Acq: 24 Dec 2019 12:55

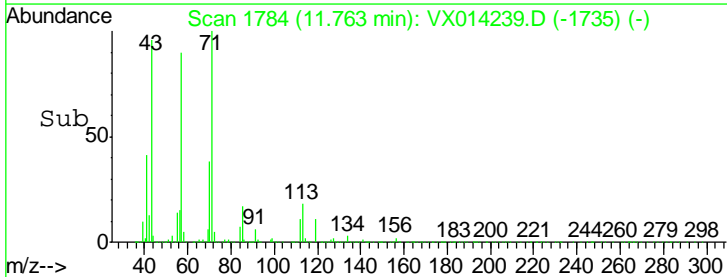
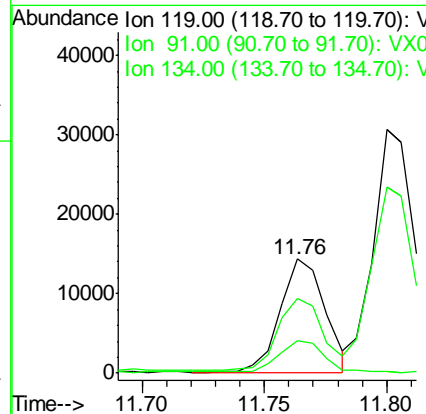
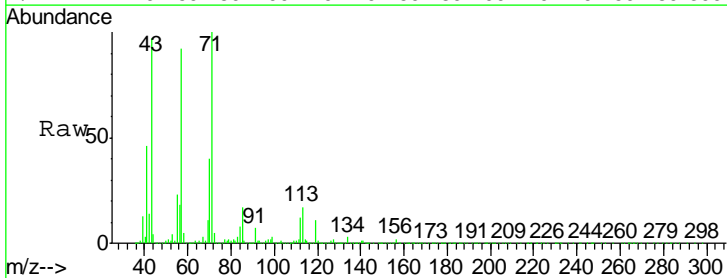
Instrument :
 MSVOA_X
 ClientSampled :
 C0B37

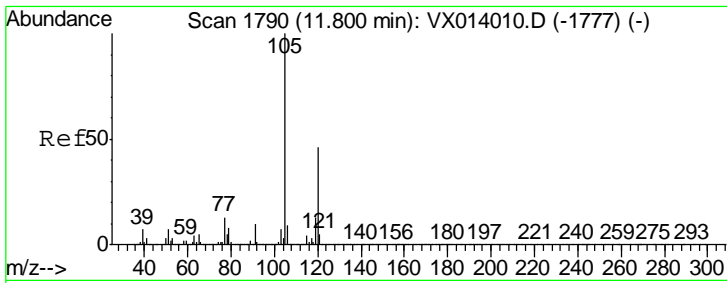
Tgt Ion: 91 Resp: 9900
 Ion Ratio Lower Upper
 91 100
 126 27.0 15.6 46.8



#83
 tert-Butylbenzene
 Concen: 0.872 ug/l
 RT: 11.76 min Scan# 1784
 Delta R.T. 0.00 min
 Lab File: VX014239.D
 Acq: 24 Dec 2019 12:55

Tgt Ion: 119 Resp: 18055
 Ion Ratio Lower Upper
 119 100
 91 65.2 28.5 85.6
 134 31.0 12.2 36.6

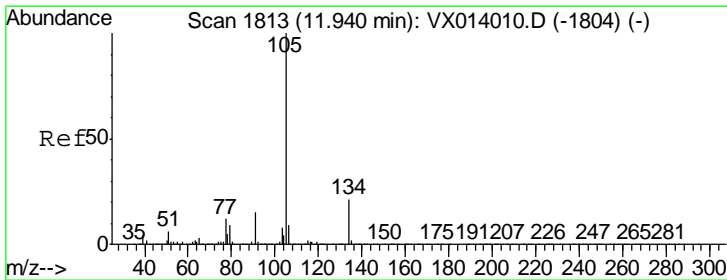
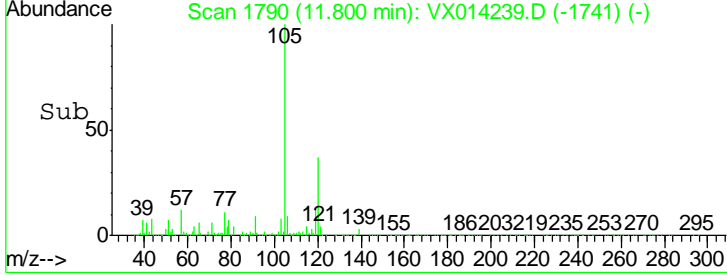
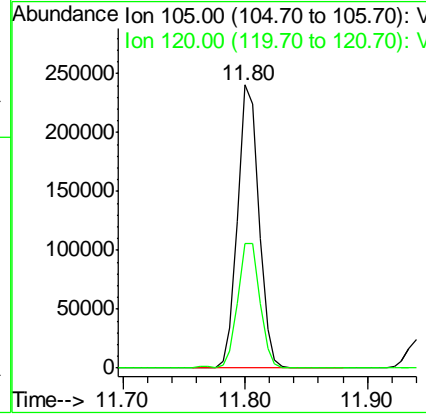
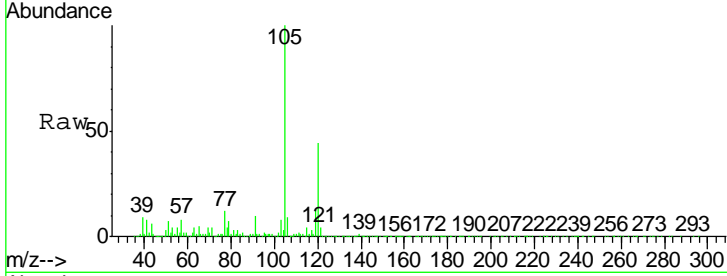




#84
 1,2,4-Trimethylbenzene
 Concen: 13.406 ug/l
 RT: 11.80 min Scan# 1790
 Delta R.T. 0.00 min
 Lab File: VX014239.D
 Acq: 24 Dec 2019 12:55

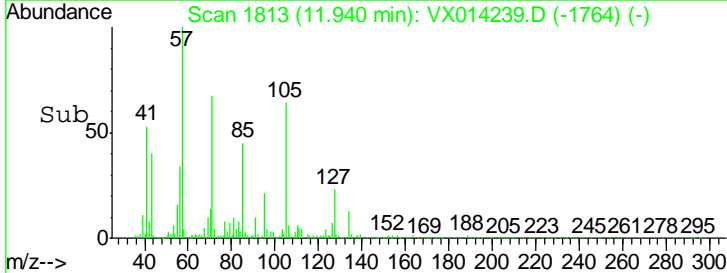
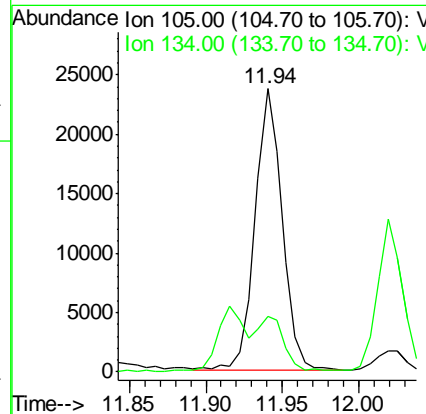
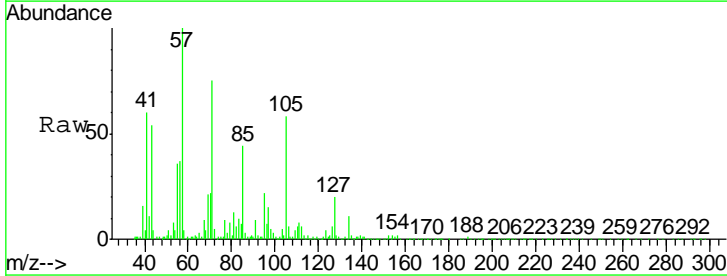
Instrument :
 MSVOA_X
 ClientSampled :
 C0B37

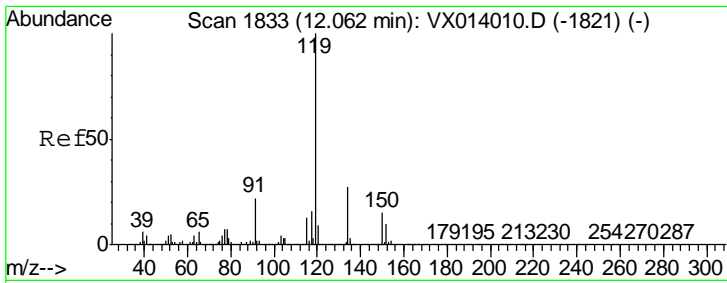
Tgt Ion:105 Resp: 285716
 Ion Ratio Lower Upper
 105 100
 120 46.7 23.1 69.2



#85
 sec-Butylbenzene
 Concen: 1.187 ug/l
 RT: 11.94 min Scan# 1813
 Delta R.T. 0.00 min
 Lab File: VX014239.D
 Acq: 24 Dec 2019 12:55

Tgt Ion:105 Resp: 29012
 Ion Ratio Lower Upper
 105 100
 134 20.2 10.4 31.1

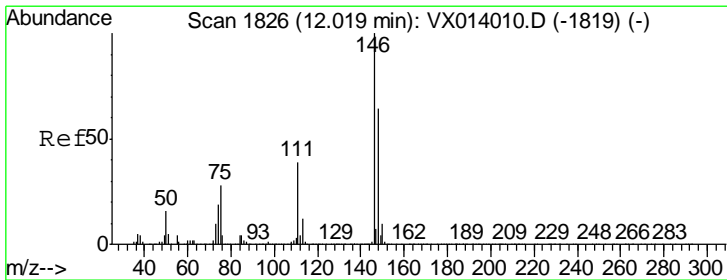
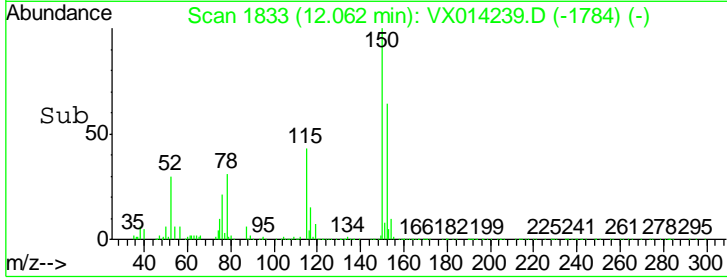
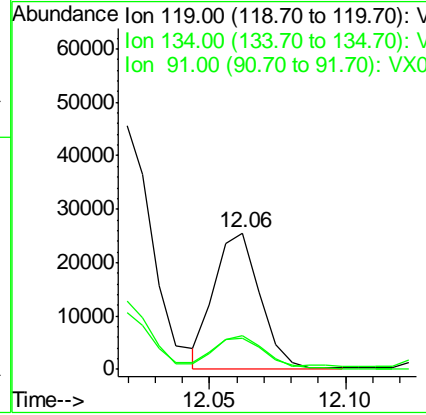
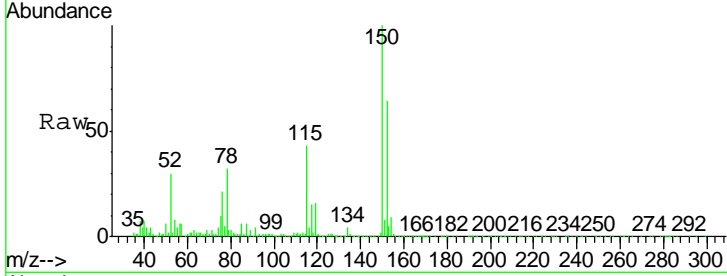




#86
 p-Isopropyltoluene
 Concen: 1.327 ug/l
 RT: 12.06 min Scan# 1833
 Delta R.T. 0.00 min
 Lab File: VX014239.D
 Acq: 24 Dec 2019 12:55

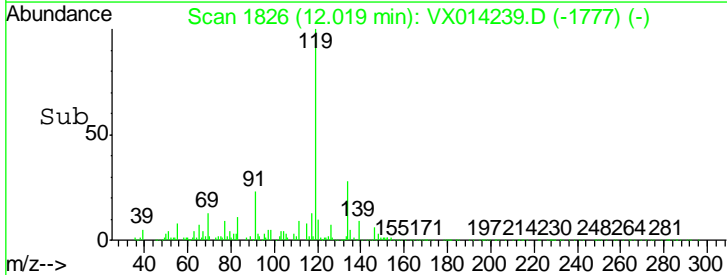
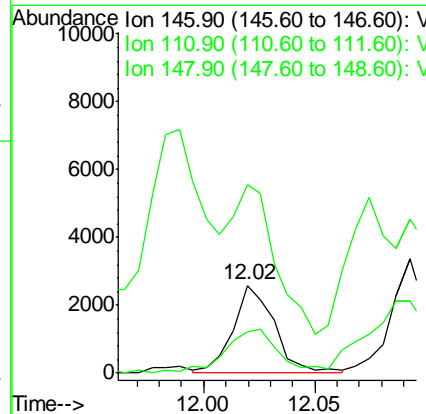
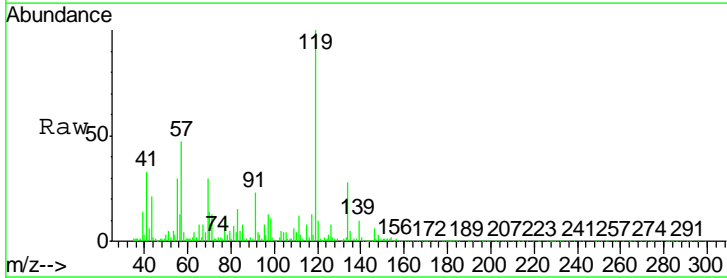
Instrument :
 MSVOA_X
 ClientSampled :
 C0B37

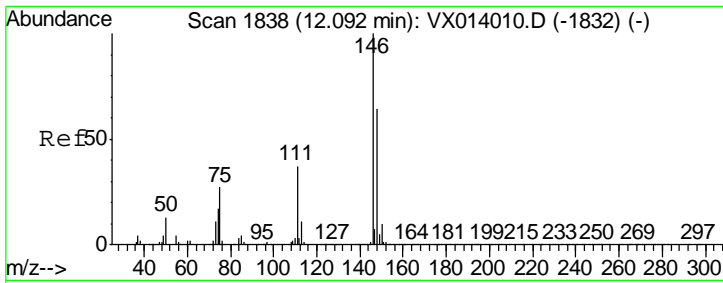
Tgt Ion	Resp	Lower	Upper
119	29682		
134	26.6	13.4	40.1
91	26.6	11.4	34.1



#87
 1,3-Dichlorobenzene
 Concen: 0.277 ug/l
 RT: 12.02 min Scan# 1826
 Delta R.T. 0.00 min
 Lab File: VX014239.D
 Acq: 24 Dec 2019 12:55

Tgt Ion	Resp	Lower	Upper
146	3383		
111	174.4	19.1	57.1#
148	62.2	32.3	96.9

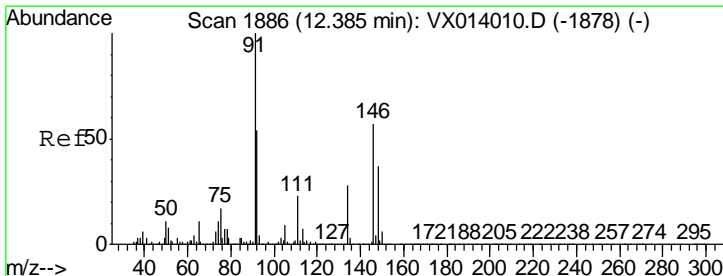
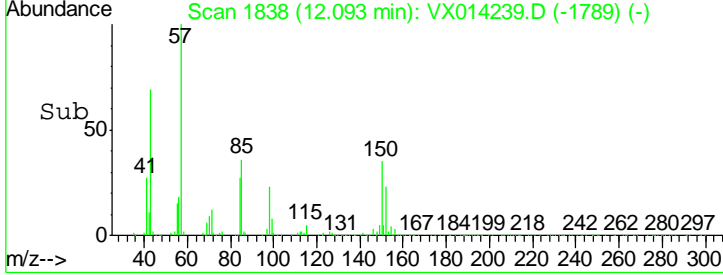
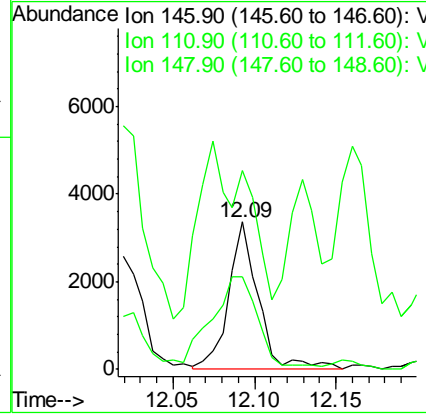
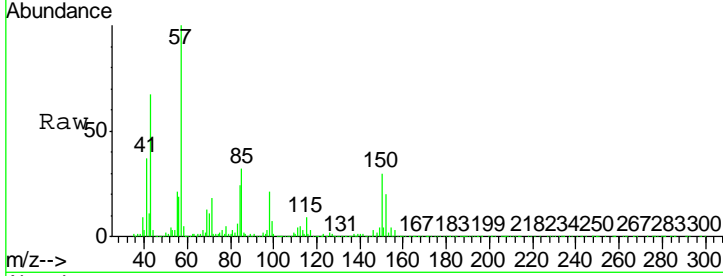




#88
 1,4-Dichlorobenzene
 Concen: 0.346 ug/l
 RT: 12.09 min Scan# 1838
 Delta R.T. 0.00 min
 Lab File: VX014239.D
 Acq: 24 Dec 2019 12:55

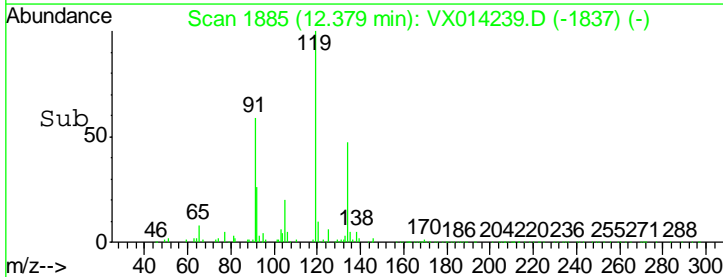
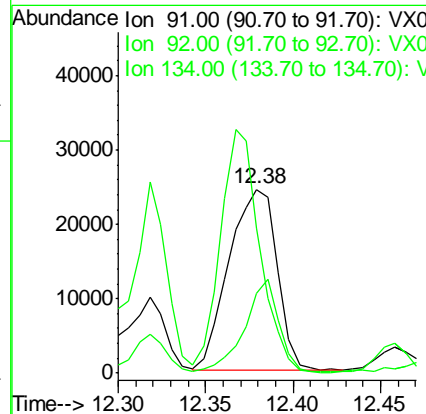
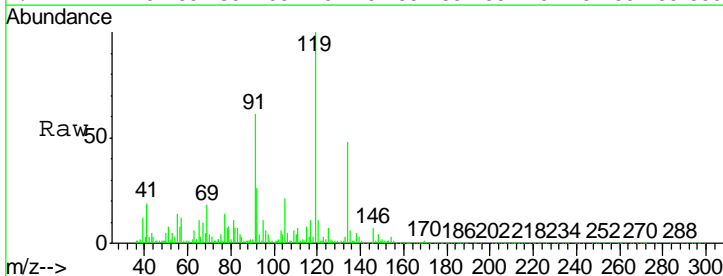
Instrument : MSVOA_X
 ClientSampled : C0B37

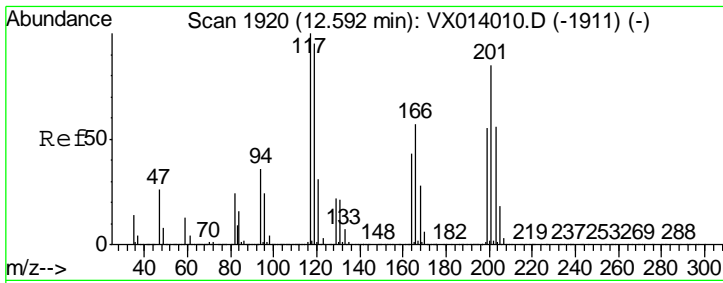
Tgt Ion	Resp	Lower	Upper
146	100		
111	126.1	18.7	56.1#
148	97.3	31.9	95.9#



#89
 n-Butylbenzene
 Concen: 2.456 ug/l
 RT: 12.38 min Scan# 1885
 Delta R.T. -0.01 min
 Lab File: VX014239.D
 Acq: 24 Dec 2019 12:55

Tgt Ion	Resp	Lower	Upper
91	100		
92	36.1	27.2	81.6
134	108.1	13.4	40.1#

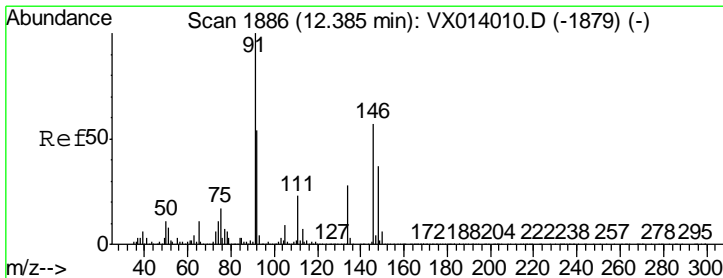
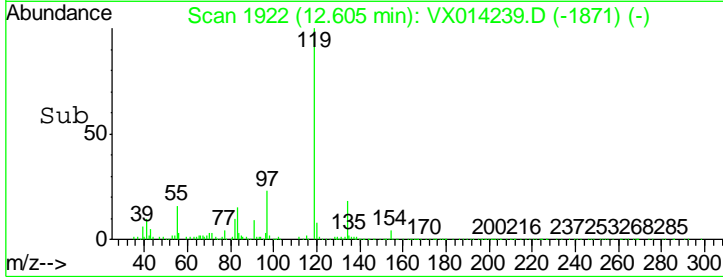
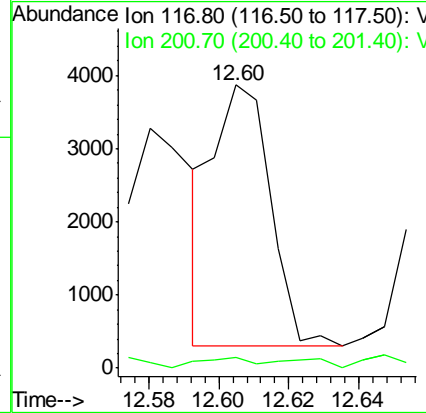
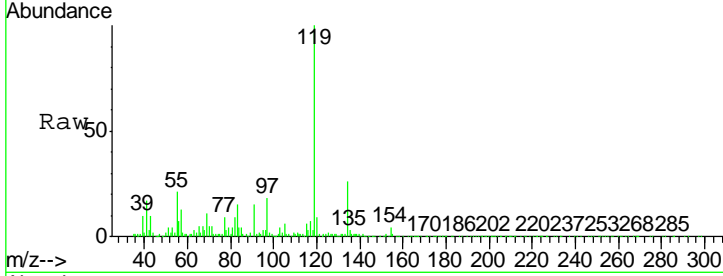




#90
 Hexachloroethane
 Concen: 1.002 ug/l
 RT: 12.60 min Scan# 1922
 Delta R.T. 0.01 min
 Lab File: VX014239.D
 Acq: 24 Dec 2019 12:55

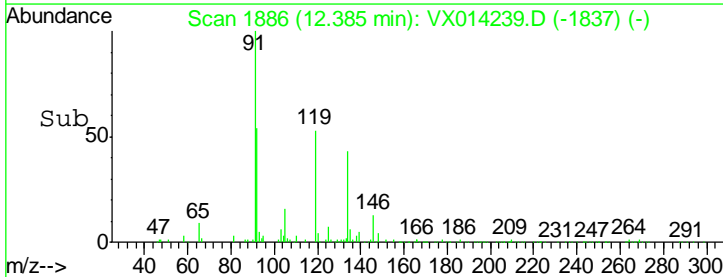
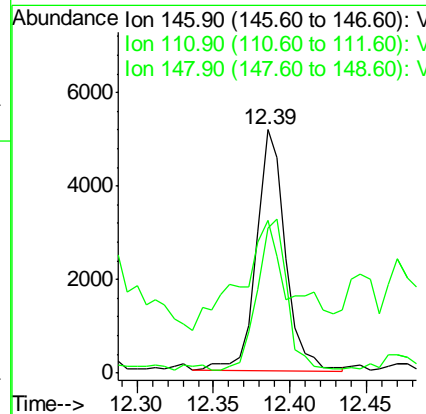
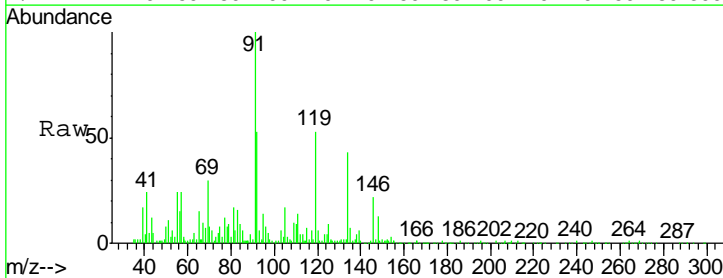
Instrument : MSVOA_X
 ClientSampled : C0B37

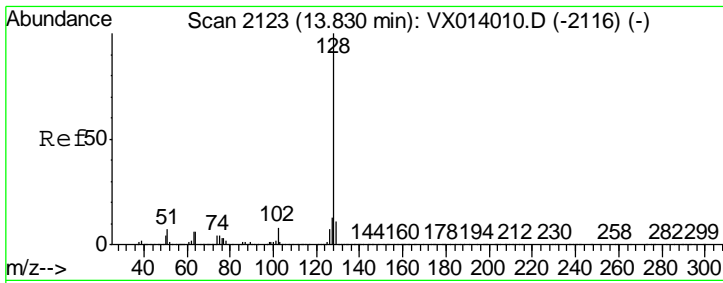
Tgt Ion: 117 Resp: 4024
 Ion Ratio Lower Upper
 117 100
 201 3.7 43.1 129.3#



#91
 1,2-Dichlorobenzene
 Concen: 0.558 ug/l
 RT: 12.39 min Scan# 1886
 Delta R.T. 0.00 min
 Lab File: VX014239.D
 Acq: 24 Dec 2019 12:55

Tgt Ion: 146 Resp: 6852
 Ion Ratio Lower Upper
 146 100
 111 75.7 19.7 59.1#
 148 63.3 32.1 96.5





#95
 Naphthalene
 Concen: 0.984 ug/l
 RT: 13.83 min Scan# 2123
 Delta R.T. 0.00 min
 Lab File: VX014239.D
 Acq: 24 Dec 2019 12:55

Instrument : MSVOA_X
 ClientSampled : C0B37

Tgt Ion	Resp	Lower	Upper
128	23076		
127	13.5	10.2	15.4
129	12.9	8.7	13.1

