

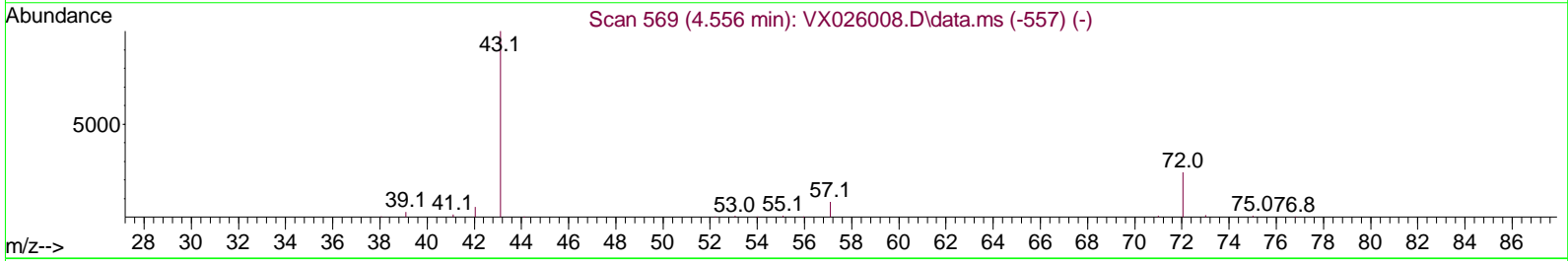
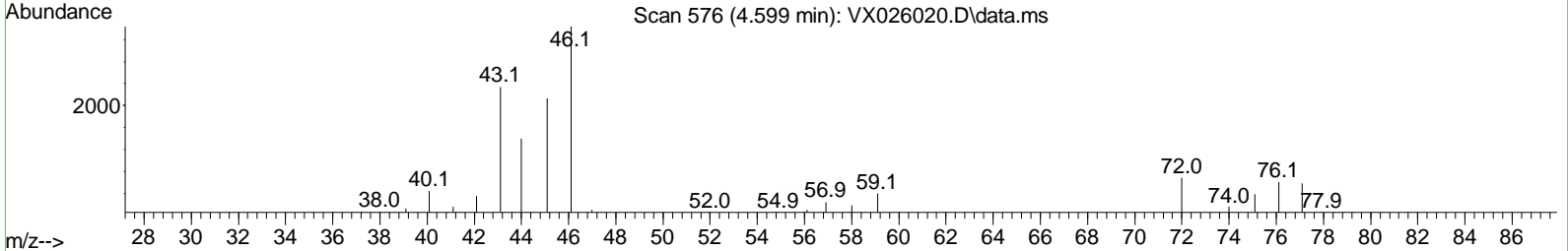
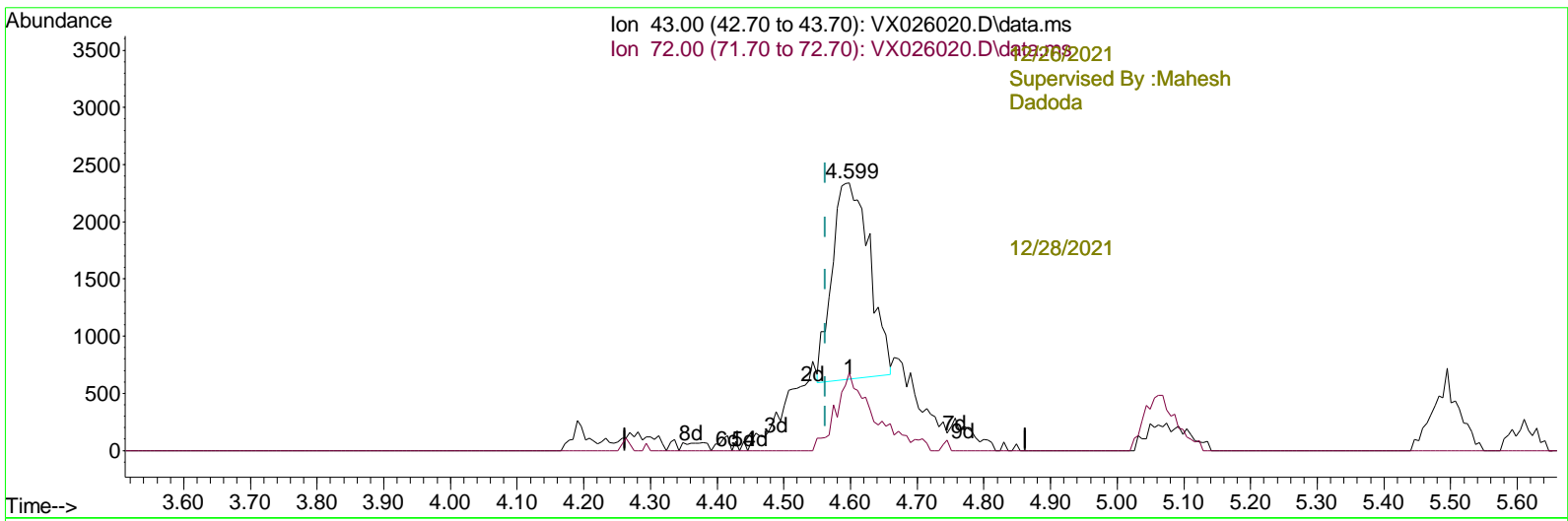
Data Path : Z:\voasrv\HPCHEM1\MSVOA\_X\Data\VX122421\  
 Data File : VX026020.D  
 Acq On : 24 Dec 2021 17:19  
 Operator : JC/MD  
 Sample : M5154-10ME  
 Mi sc : 6.72g/5mL/100uL/5.00mL/MSVOA\_X/MEOH  
 ALS Vial : 15 Sample Multiplier: 1

**Instrument :**  
 MSVOA\_X  
**ClientSampleId :**  
 BGL90ME

**Manual IntegrationsAPPROVED**

Reviewed By :Semsettin  
 Yesilyurt

Quant Time: Dec 24 22:52:07 2021  
 Quant Method : Z:\voasrv\HPCHEM1\MSVOA\_X\Method\SFAMXLM122321WMA.M  
 Quant Title : VOC Analysis  
 QLast Update : Thu Dec 23 21:00:32 2021  
 Response via : Initial Calibration



TIC: VX026020.D\data.ms

(22) 2-Butanone (T)

4.599min (+ 0.036) 4.33 ug/L

response	6703	
Ion	Exp%	Act%
43.00	100.00	100.00
72.00	27.50	21.39
0.00	0.00	0.00
0.00	0.00	0.00

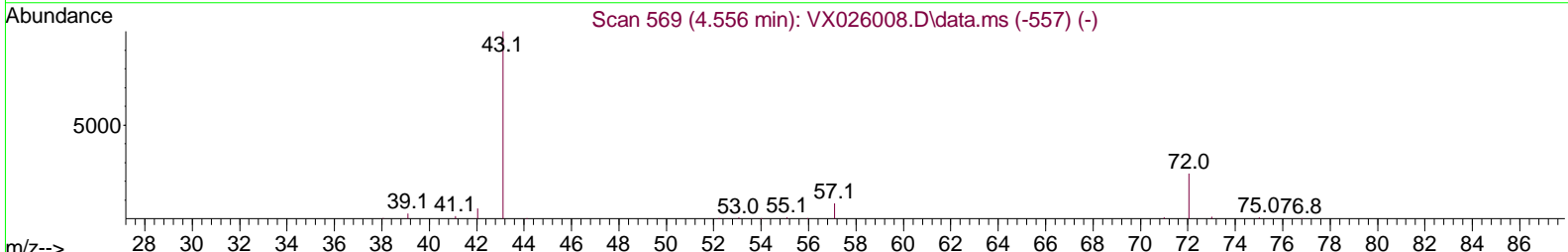
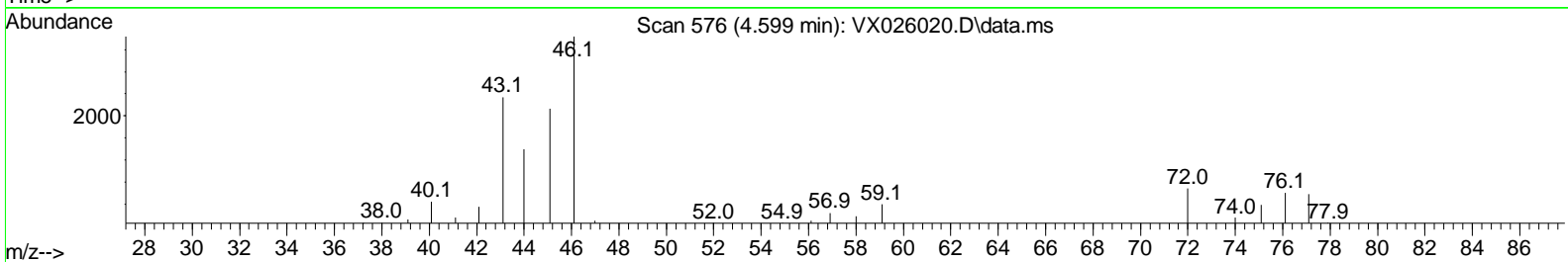
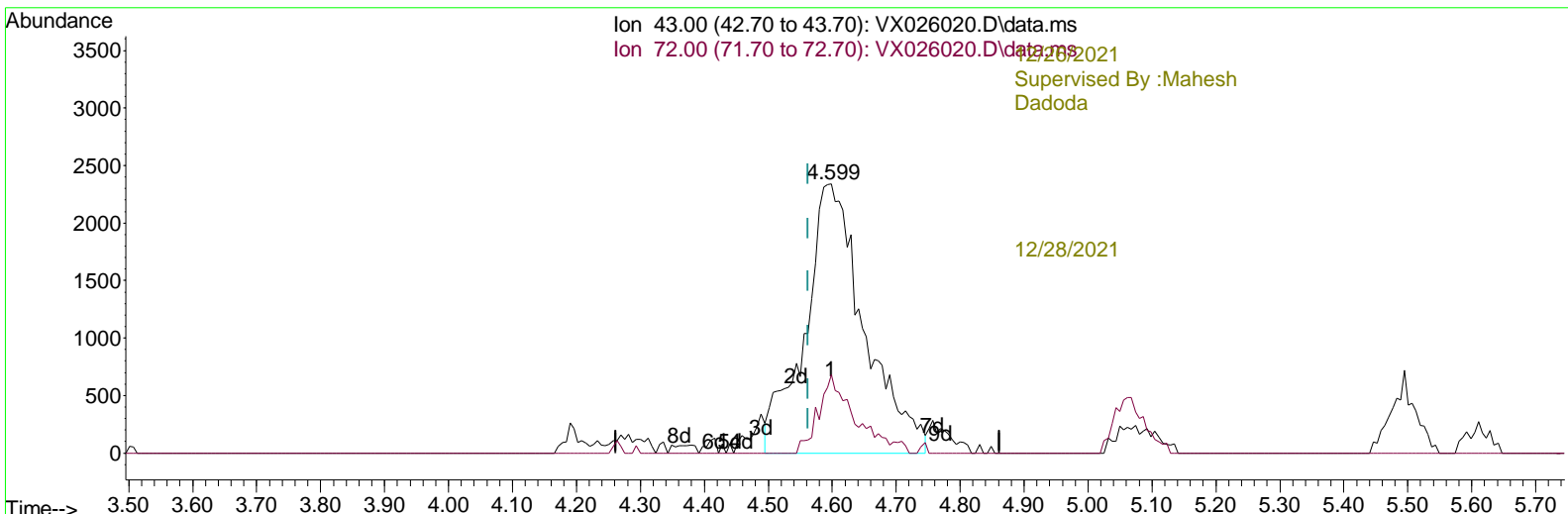
Data Path : Z:\voasrv\HPCHEM1\MSVOA\_X\Data\VX122421\  
 Data File : VX026020.D  
 Acq On : 24 Dec 2021 17:19  
 Operator : JC/MD  
 Sample : M5154-10ME  
 Mi sc : 6.72g/5mL/100uL/5.00mL/MSVOA\_X/MEOH  
 ALS Vial : 15 Sample Multiplier: 1

**Instrument :**  
 MSVOA\_X  
**ClientSampleId :**  
 BGL90ME

**Manual IntegrationsAPPROVED**

Reviewed By :Semsettin  
 Yesilyurt

Quant Time: Dec 24 22:52:07 2021  
 Quant Method : Z:\voasrv\HPCHEM1\MSVOA\_X\Method\SFAMXLM122321WMA.M  
 Quant Title : VOC Analysis  
 QLast Update : Thu Dec 23 21:00:32 2021  
 Response via : Initial Calibration



TIC: VX026020.D\data.ms

(22) 2-Butanone (T)

4.599min (+ 0.036) 9.74 ug/L m

response 15074

Ion	Exp%	Act%
43.00	100.00	100.00
72.00	27.50	9.51#
0.00	0.00	0.00
0.00	0.00	0.00

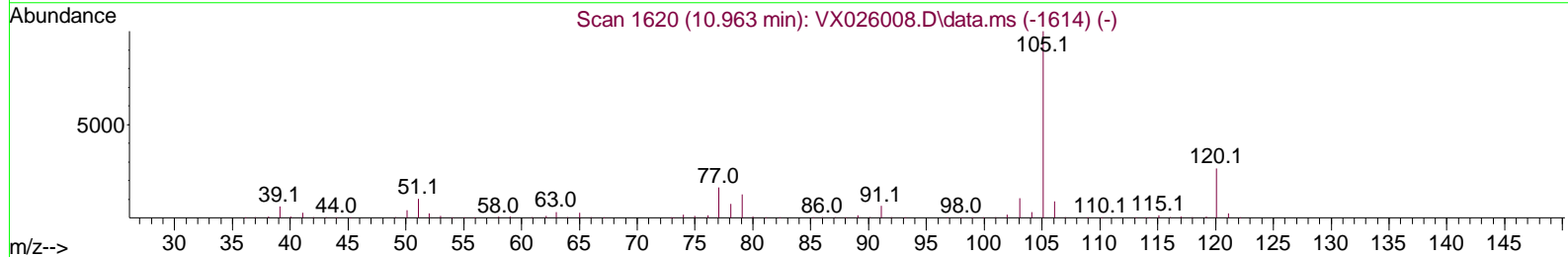
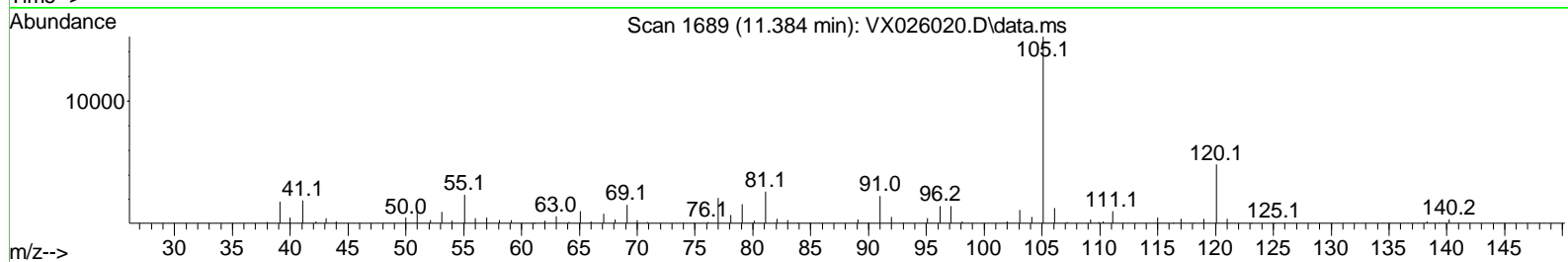
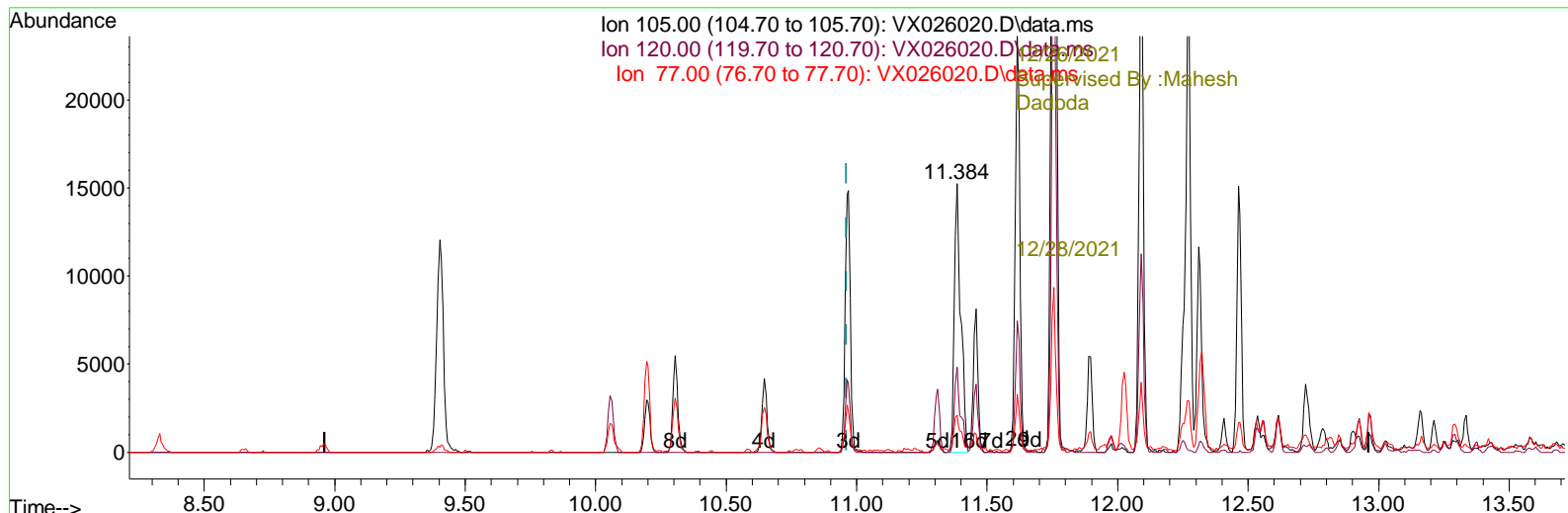
Data Path : Z:\voasrv\HPCHEM1\MSVOA\_X\Data\VX122421\  
 Data File : VX026020.D  
 Acq On : 24 Dec 2021 17:19  
 Operator : JC/MD  
 Sample : M5154-10ME  
 Mi sc : 6.72g/5mL/100uL/5.00mL/MSVOA\_X/MEOH  
 ALS Vial : 15 Sample Multiplier: 1

Instrument :  
 MSVOA\_X  
 ClientSampleId :  
 BGL90ME

Manual Integrations APPROVED

Reviewed By : Semsettin  
 Yesilyurt

Quant Time: Dec 24 22:52:07 2021  
 Quant Method : Z:\voasrv\HPCHEM1\MSVOA\_X\Method\SFAMXLM122321WMA.M  
 Quant Title : VOC Analysis  
 QLast Update : Thu Dec 23 21:00:32 2021  
 Response via : Initial Calibration



TIC: VX026020.D\data.ms

(60) Isopropylbenzene

11.384min (+ 0.420) 2.91 ug/L

response 25723

Ion	Exp%	Act%
105.00	100.00	100.00
120.00	27.90	25.61
77.00	14.40	13.45
0.00	0.00	0.00

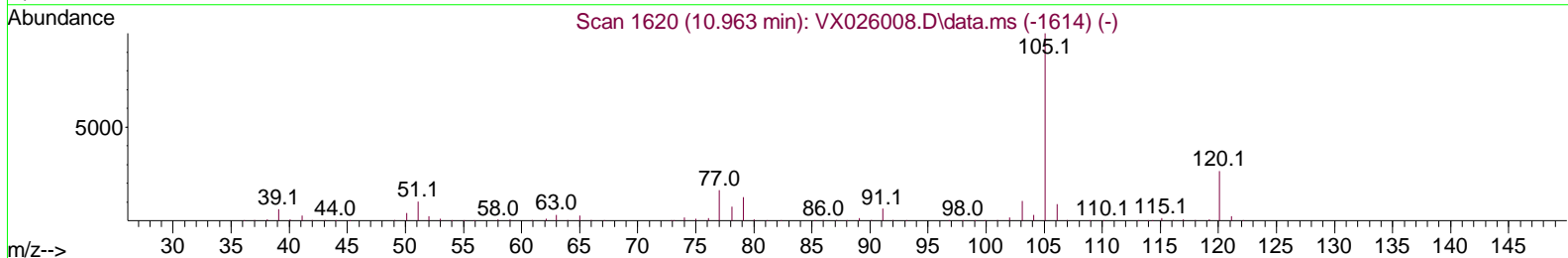
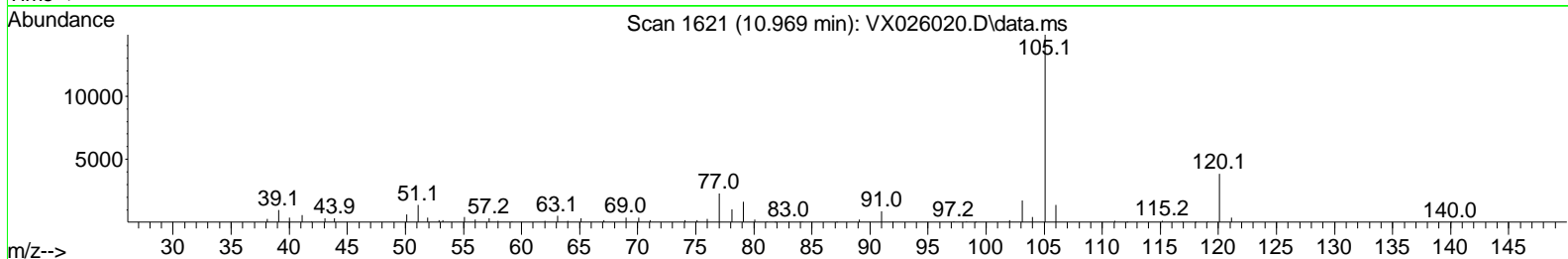
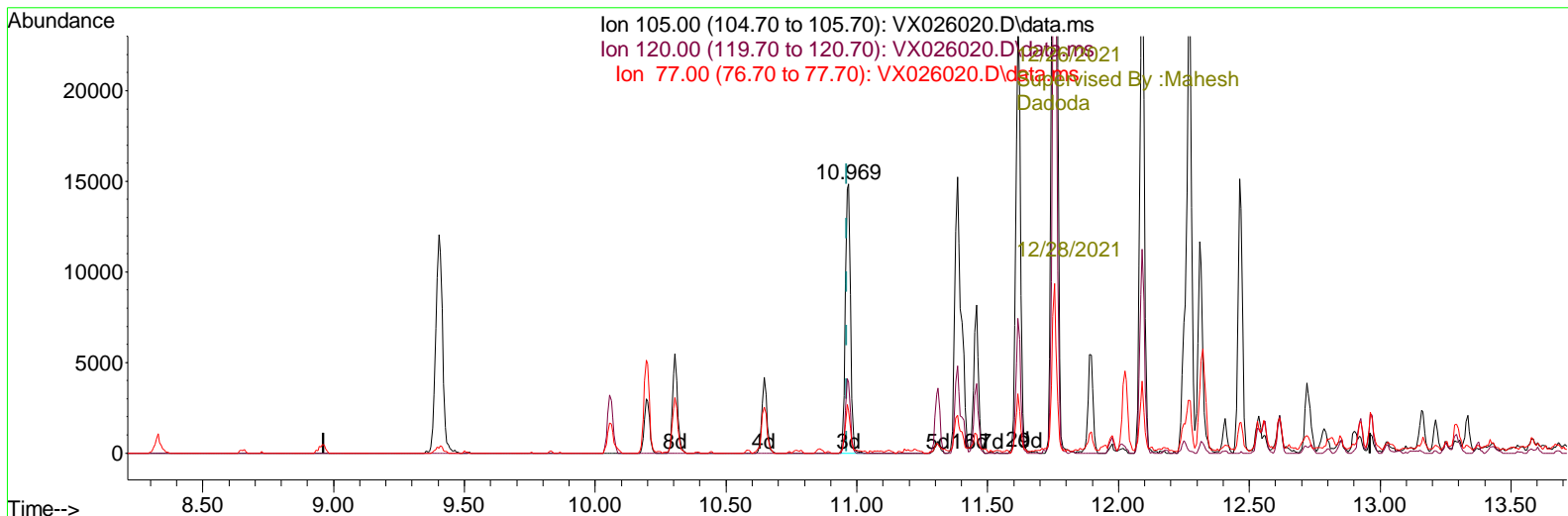
Data Path : Z:\voasrv\HPCHEM1\MSVOA\_X\Data\VX122421\  
 Data File : VX026020.D  
 Acq On : 24 Dec 2021 17:19  
 Operator : JC/MD  
 Sample : M5154-10ME  
 Mi sc : 6.72g/5mL/100uL/5.00mL/MSVOA\_X/MEOH  
 ALS Vial : 15 Sample Multiplier: 1

Instrument :  
 MSVOA\_X  
 ClientSampleId :  
 BGL90ME

Manual Integrations APPROVED

Reviewed By : Semsettin  
 Yesilyurt

Quant Time: Dec 24 22:52:07 2021  
 Quant Method : Z:\voasrv\HPCHEM1\MSVOA\_X\Method\SFAMXLM122321WMA.M  
 Quant Title : VOC Analysis  
 QLast Update : Thu Dec 23 21:00:32 2021  
 Response via : Initial Calibration



TIC: VX026020.D\data.ms

(60) Isopropylbenzene

10.969min (+ 0.006) 2.32 ug/L m

response 20454

Ion	Exp%	Act%
105.00	100.00	100.00
120.00	27.90	32.20
77.00	14.40	16.91
0.00	0.00	0.00

Data Path : Z:\voasrv\HPCHEM1\MSVOA\_X\Data\WX122421\  
 Data File : VX026020.D  
 Acq On : 24 Dec 2021 17:19  
 Operator : JC/MD  
 Sample : M5154-10ME  
 Mi sc : 6.72g/5mL/100uL/5.00mL/MSVOA\_X/MEOH  
 ALS Vial : 15 Sample Multi plier: 1

**Instrument :**  
 MSVOA\_X  
**ClientSampleId :**  
 BGL90ME

**Manual IntegrationsAPPROVED**

Reviewed By :Semsettin  
 Yesilyurt

Quant Time: Dec 24 22:52:07 2021  
 Quant Method : Z:\voasrv\HPCHEM1\MSVOA\_X\Method\SFAMXLM122321WMA.M  
 Quant Title : VOC Analysis  
 QLast Update : Thu Dec 23 21:00:32 2021  
 Response via : Initial Calibration

Compound	R.T.	QI on	Response	Conc	Units	Dev(Min)
-----12/26/2021						
Internal Standards						
1) 1,4-Di fluorobenzene	6.763	114	247199	50.000	ug/L	0.00
28) Chlorobenzene-d5	10.061	117	234714	50.000	ug/L	0.00
58) 1,4-Di chlorobenzene-d4	12.024	152	128567	50.000	ug/L	0.00
-----12/28/2021						
System Monitoring Compounds						
4) Vinyl Chloride-d3	1.373	65	75386	43.004	ug/L	0.00
Spi ked Amount	50.000	Range 60 - 135	Recovery =	86.000%		
7) Chloroethane-d5	1.648	69	34628	24.718	ug/L	-0.02
Spi ked Amount	50.000	Range 70 - 130	Recovery =	49.440%#		
11) 1,1-Di chloroethene-d2	2.276	63	125677	36.178	ug/L	-0.04
Spi ked Amount	50.000	Range 60 - 125	Recovery =	72.360%		
21) 2-Butanone-d5	4.495	46	105273	69.267	ug/L	0.04
Spi ked Amount	100.000	Range 40 - 130	Recovery =	69.270%		
24) Chloroform-d	5.068	84	156237	44.537	ug/L	0.00
Spi ked Amount	50.000	Range 70 - 125	Recovery =	89.080%		
26) 1,2-Di chloroethane-d4	5.958	65	112383	47.316	ug/L	0.00
Spi ked Amount	50.000	Range 70 - 125	Recovery =	94.640%		
32) Benzene-d6	5.970	84	339479	50.249	ug/L	0.00
Spi ked Amount	50.000	Range 70 - 125	Recovery =	100.500%		
36) 1,2-Di chloropropane-d6	7.311	67	105391	50.185	ug/L	0.00
Spi ked Amount	50.000	Range 70 - 120	Recovery =	100.380%		
41) Tol uene-d8	8.653	98	309886	49.127	ug/L	0.00
Spi ked Amount	50.000	Range 80 - 120	Recovery =	98.260%		
43) trans-1,3-Di chloroprop. . .	8.951	79	36112	39.524	ug/L	0.00
Spi ked Amount	50.000	Range 60 - 125	Recovery =	79.040%		
47) 2-Hexanone-d5	9.403	63	108723	100.314	ug/L	0.02
Spi ked Amount	100.000	Range 45 - 130	Recovery =	100.310%		
56) 1,1,2,2-Tetrachloroeth. . .	11.201	84	150146	48.488	ug/L	0.00
Spi ked Amount	50.000	Range 65 - 120	Recovery =	96.980%		
66) 1,2-Di chlorobenzene-d4	12.323	152	128267	52.796	ug/L	0.00
Spi ked Amount	50.000	Range 80 - 120	Recovery =	105.600%		
-----						
Target Compounds						Qval ue
13) Acetone	2.422	43	7511	9.040	ug/L	74
22) 2-Butanone	4.599	43	15074m	9.744	ug/L	
42) Tol uene	8.720	91	10096	1.272	ug/L	93
52) Ethyl benzene	10.195	91	82772	9.615	ug/L	97
53) m,p-Xyl ene	10.305	106	15643	4.760	ug/L	88
54) o-Xyl ene	10.646	106	13134	4.035	ug/L	98
60) I sopropyl benzene	10.969	105	20454m	2.316	ug/L	
62) 1,3,5-Tri methyl benzene	11.457	105	10109	1.367	ug/L	94
63) 1,2,4-Tri methyl benzene	11.756	105	84730	11.436	ug/L #	81

(#) = quali fier out of range (m) = manual i ntegrati on (+) = si gnal s summed

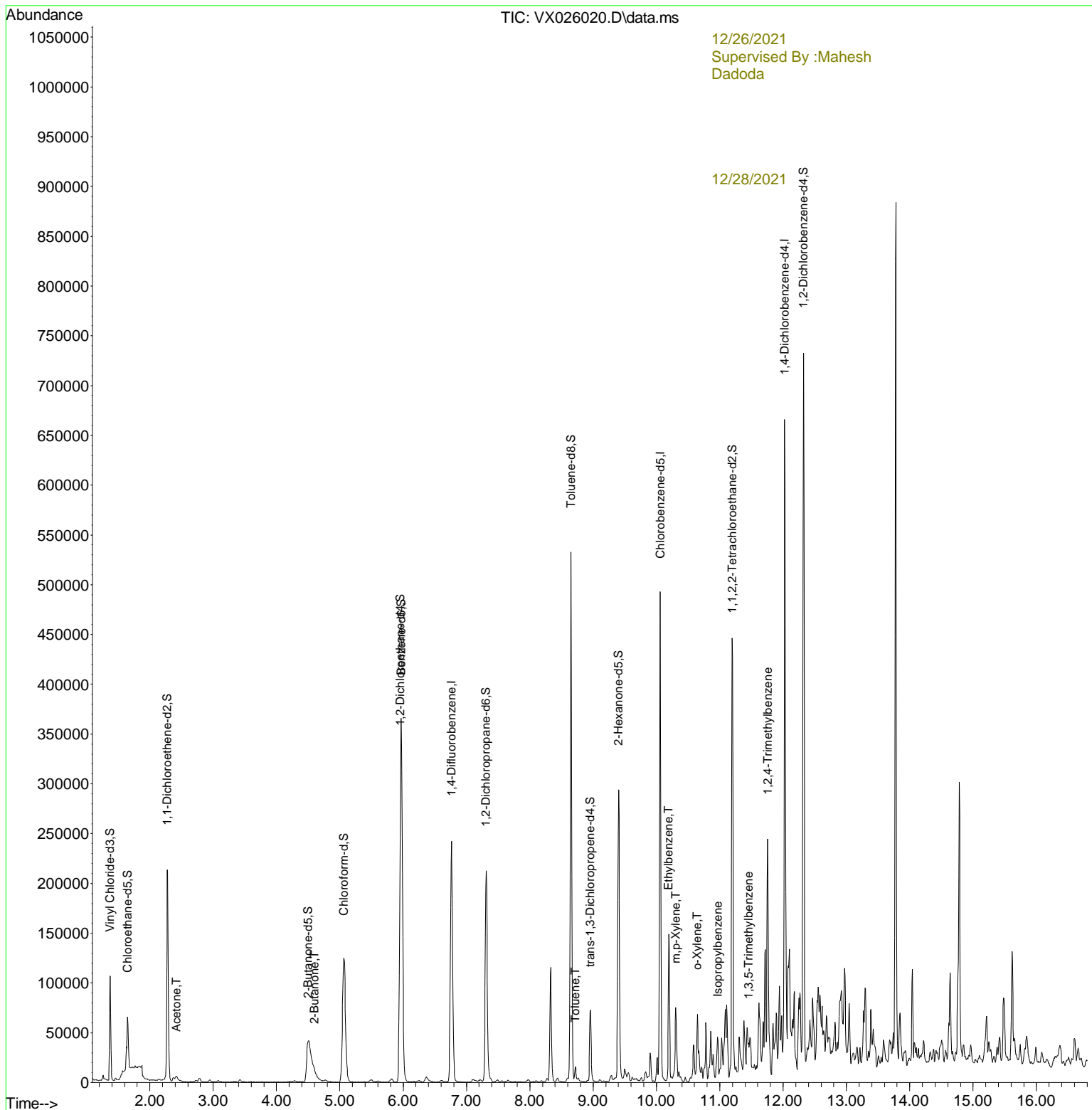
Data Path : Z:\voasrv\HPCHEM1\MSVOA\_X\Data\VX122421\  
 Data File : VX026020.D  
 Acq On : 24 Dec 2021 17:19  
 Operator : JC/MD  
 Sample : M5154-10ME  
 Misc : 6.72g/5mL/100uL/5.00mL/MSVOA\_X/MEOH  
 ALS Vial : 15 Sample Multiplier: 1

**Instrument :**  
 MSVOA\_X  
**ClientSampleId :**  
 BGL90ME

**Manual IntegrationsAPPROVED**

Reviewed By :Semsettin  
 Yesilyurt

Quant Time: Dec 24 22:52:07 2021  
 Quant Method : Z:\voasrv\HPCHEM1\MSVOA\_X\Method\SFAMXLM122321WMA.M  
 Quant Title : VOC Analysis  
 QLast Update : Thu Dec 23 21:00:32 2021  
 Response via : Initial Calibration



12/26/2021  
 Supervised By :Mahesh  
 Dadoda

12/28/2021