

Data Path : Z:\VOASRV\HPCHEM1\MSVOA_X\DATA\WX122618\
 Data File : VX006823.D
 Acq On : 26 Dec 2018 17:23
 Operator : JC/MD
 Sample : J6533-16
 Misc : 5.0mL/MSVOA_X/WATER
 ALS Vial : 17 Sample Multiplier: 1

Instrument :
 MSVOA_X
 ClientSampled :
 COMP-4

Quant Time: Dec 27 03:05:51 2018
 Quant Method : Z:\VOASRV\HPCHEM1\MSVOA_X\METHOD\82X121818W.M
 Quant Title : SW846 8260
 QLast Update : Wed Dec 19 15:20:58 2018
 Response via : Initial Calibration

Internal Standards	R.T.	QIon	Response	Conc	Units	Dev(Min)
1) Pentafluorobenzene	5.66	168	735398	50.00	ug/l	0.00
34) 1,4-Difluorobenzene	6.86	114	1070734	50.00	ug/l	0.00
63) Chlorobenzene-d5	10.11	117	974402	50.00	ug/l	0.00
72) 1,4-Dichlorobenzene-d4	12.08	152	499199	50.00	ug/l	0.00

System Monitoring Compounds

33) 1,2-Dichloroethane-d4	6.07	65	356303	44.95	ug/l	0.00
Spiked Amount	50.000		Recovery	=	89.90%	
35) Dibromofluoromethane	5.50	113	315905	46.65	ug/l	0.00
Spiked Amount	50.000		Recovery	=	93.30%	
50) Toluene-d8	8.71	98	1255789	49.19	ug/l	0.00
Spiked Amount	50.000		Recovery	=	98.38%	
62) 4-Bromofluorobenzene	11.13	95	457767	48.96	ug/l	0.00
Spiked Amount	50.000		Recovery	=	97.92%	

Target Compounds

					Qvalue	
3) Chloromethane	1.33	50	1632	0.225	ug/l #	84
5) Bromomethane	1.64	94	639	Below Cal	#	41
6) Chloroethane	1.75	64	1625	0.310	ug/l #	66
11) Tert butyl alcohol	3.06	59	309573	175.016	ug/l	99
13) Acrolein	2.30	56	8293	6.950	ug/l	95
16) Acetone	2.45	43	250860	68.892	ug/l	99
17) Carbon Disulfide	2.57	76	5069	0.292	ug/l #	88
18) Methyl Acetate	2.78	43	129735	12.116	ug/l	100
20) Methylene Chloride	2.85	84	3289	0.437	ug/l #	83
25) 2-Butanone	4.70	43	1383228	270.055	ug/l	98
27) cis-1,2-Dichloroethene	4.60	96	5003	0.623	ug/l	90
28) Bromochloromethane	5.00	49	446	Below Cal	#	9
29) Tetrahydrofuran	5.17	42	3230	0.957	ug/l #	42
36) 1,1-Dichloropropene	5.66	75	45313	5.110	ug/l #	49
37) Ethyl Acetate	4.85	43	98079	10.626	ug/l	95
38) Carbon Tetrachloride	5.66	117	64871	7.527	ug/l #	14
40) Benzene	6.15	78	60844	2.257	ug/l	96
43) Isopropyl Acetate	6.46	43	8736	0.622	ug/l #	65
49) 1,4-Dioxane	7.75	88	4516	4.375	ug/l #	91
51) 4-Methyl-2-Pentanone	8.65	43	11957	1.338	ug/l	88
52) Toluene	8.78	92	30803	1.769	ug/l	99
59) 2-Hexanone	9.50	43	2699	0.395	ug/l	77
60) Dibromochloromethane	9.61	129	123	2.340	ug/l	73
67) Ethyl Benzene	10.25	91	7433	0.221	ug/l #	80
68) m/p-Xylenes	10.36	106	15334	1.154	ug/l	95
69) o-Xylene	10.69	106	7033	0.536	ug/l	92
70) Styrene	10.71	104	10268	0.494	ug/l	98
71) Bromoform	10.97	173	162	4.485	ug/l #	28
76) 1,2,3-Trichloropropane	11.13	75	215472	23.226	ug/l #	40
81) trans-1,4-Dichloro-2-buten	11.13	75	215472	68.932	ug/l #	10
85) sec-Butylbenzene	11.80	105	42861	1.242	ug/l #	55
90) Hexachloroethane	12.50	117	70	3.307	ug/l	98
95) Naphthalene	13.83	128	13774	0.376	ug/l #	86

Data Path : Z:\VOASRV\HPCHEM1\MSVOA_X\DATA\VX122618\
 Data File : VX006823.D
 Acq On : 26 Dec 2018 17:23
 Operator : JC/MD
 Sample : J6533-16
 Misc : 5.0mL/MSVOA_X/WATER
 ALS Vial : 17 Sample Multiplier: 1

Instrument :
 MSVOA_X
 ClientSampleId :
 COMP-4

Quant Time: Dec 27 03:05:51 2018
 Quant Method : Z:\VOASRV\HPCHEM1\MSVOA_X\METHOD\82X121818W.M
 Quant Title : SW846 8260
 QLast Update : Wed Dec 19 15:20:58 2018
 Response via : Initial Calibration

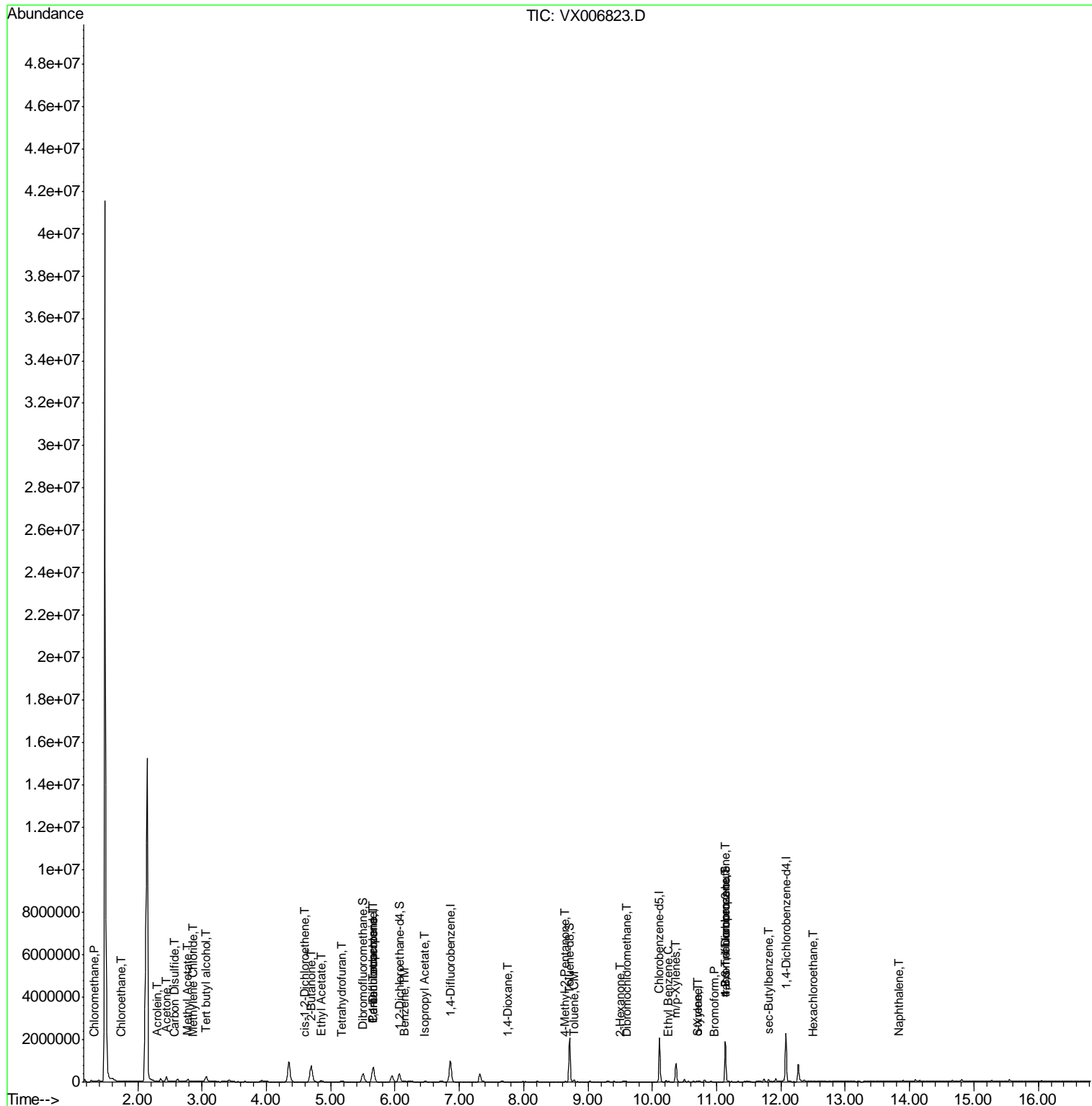
Internal Standards	R.T.	QIon	Response	Conc	Units	Dev(Min)
--------------------	------	------	----------	------	-------	----------

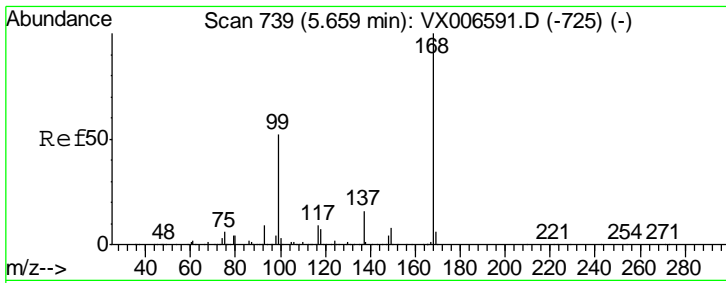
(#) = qualifier out of range (m) = manual integration (+) = signals summed

Data Path : Z:\VOASRV\HPCHEM1\MSVOA_X\DATA\VX122618\
 Data File : VX006823.D
 Acq On : 26 Dec 2018 17:23
 Operator : JC/MD
 Sample : J6533-16
 Misc : 5.0mL/MSVOA_X/WATER
 ALS Vial : 17 Sample Multiplier: 1

Instrument :
 MSVOA_X
 Client Sampled :
 COMP-4

Quant Time: Dec 27 03:05:51 2018
 Quant Method : Z:\VOASRV\HPCHEM1\MSVOA_X\METHOD\82X121818W.M
 Quant Title : SW846 8260
 QLast Update : Wed Dec 19 15:20:58 2018
 Response via : Initial Calibration

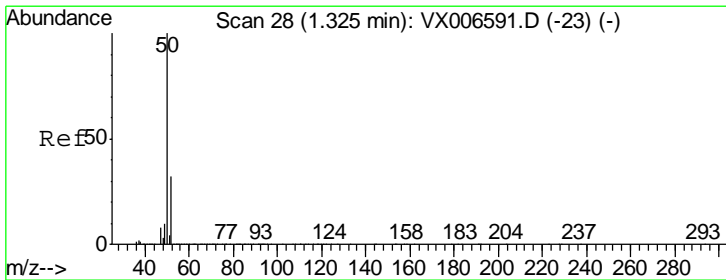
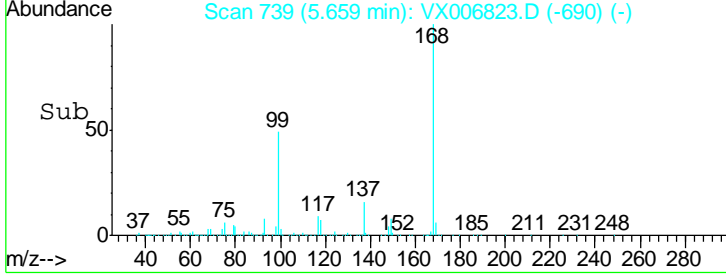
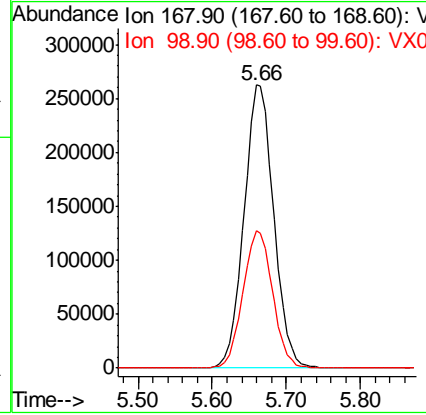
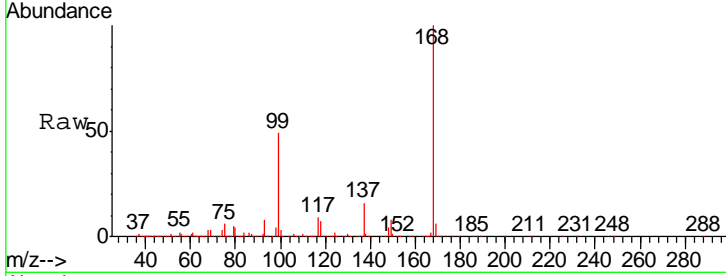




#1
 Pentafluorobenzene
 Concen: 50.000 ug/l
 RT: 5.66 min Scan# 739
 Delta R.T. -0.00 min
 Lab File: VX006823.D
 Acq: 26 Dec 2018 17:23

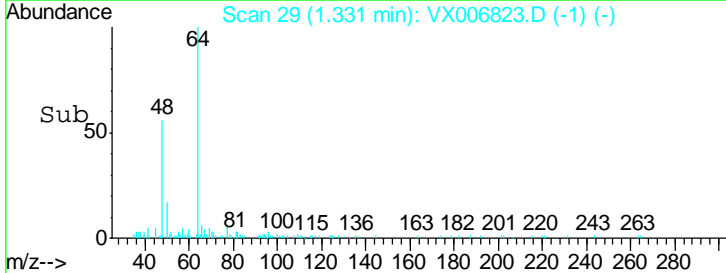
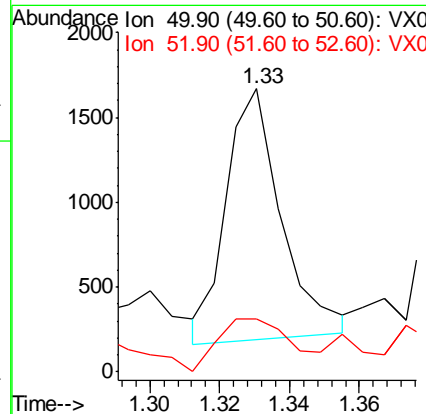
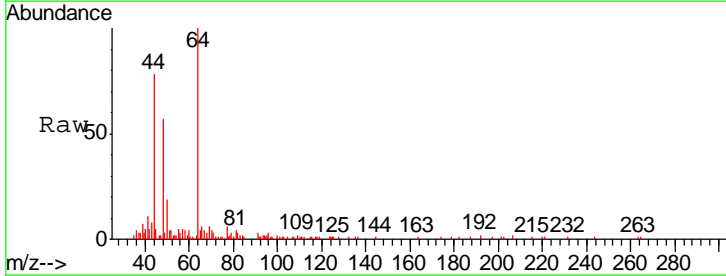
Instrument : MSVOA_X
 ClientSampleID : COMP-4

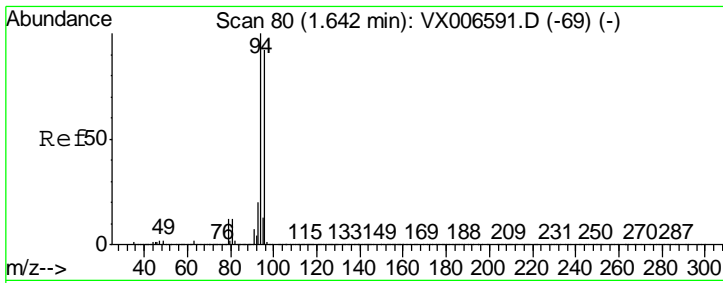
Tgt Ion	Resp	Lower	Upper
168	100		
99	48.7	41.8	62.8



#3
 Chloromethane
 Concen: 0.225 ug/l
 RT: 1.33 min Scan# 29
 Delta R.T. 0.01 min
 Lab File: VX006823.D
 Acq: 26 Dec 2018 17:23

Tgt Ion	Resp	Lower	Upper
50	100		
52	23.0	25.4	38.2

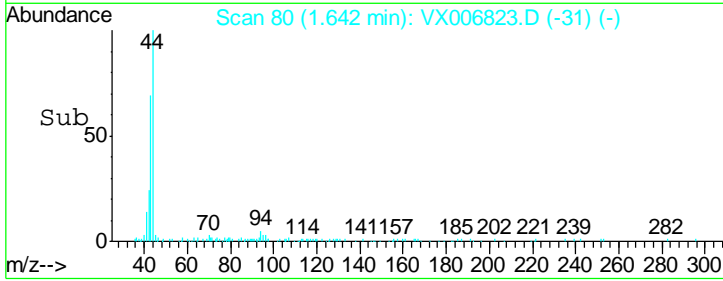
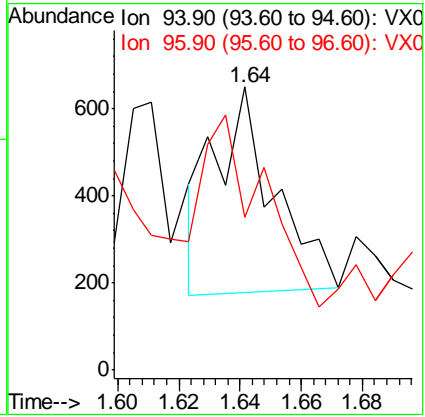
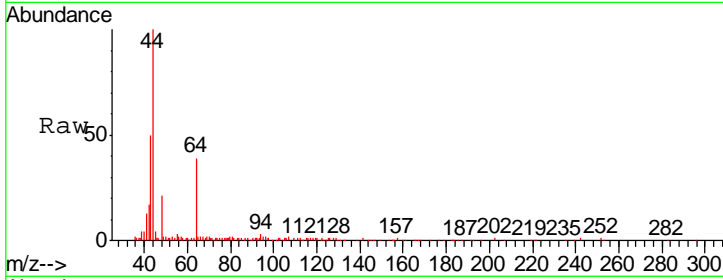




#5
 Bromomethane
 Concen: Below Cal
 RT: 1.64 min Scan# 80
 Delta R.T. 0.00 min
 Lab File: VX006823.D
 Acq: 26 Dec 2018 17:23

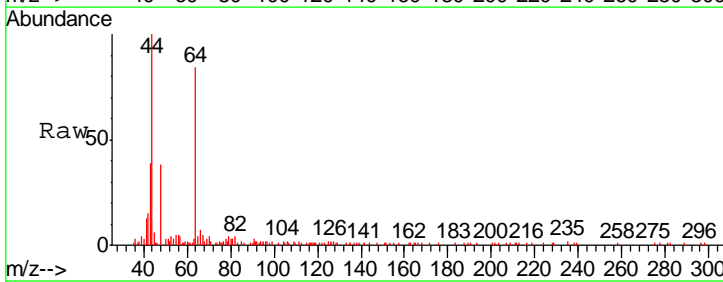
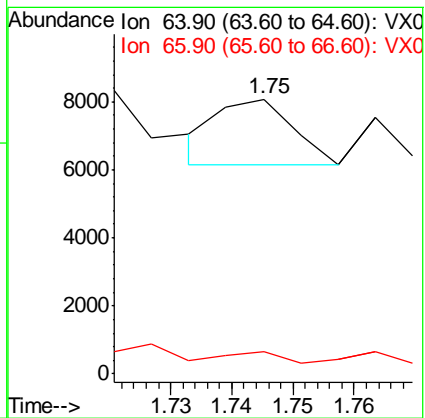
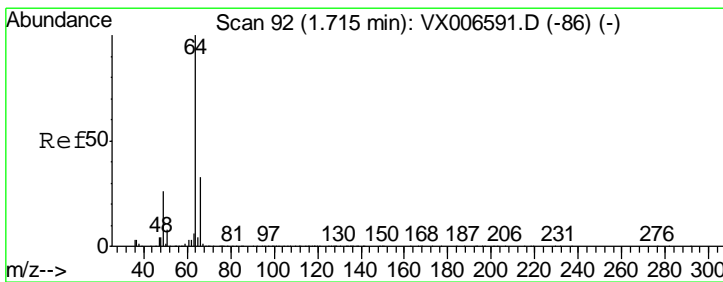
Instrument : MSVOA_X
 ClientSampled : COMP-4

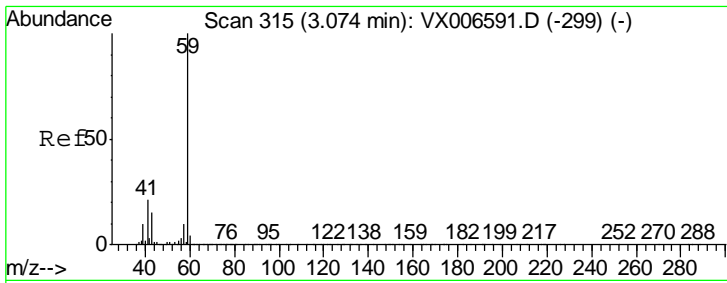
Tgt Ion: 94 Resp: 639
 Ion Ratio Lower Upper
 94 100
 96 35.8 73.4 110.2#



#6
 Chloroethane
 Concen: 0.310 ug/l
 RT: 1.75 min Scan# 97
 Delta R.T. 0.03 min
 Lab File: VX006823.D
 Acq: 26 Dec 2018 17:23

Tgt Ion: 64 Resp: 1625
 Ion Ratio Lower Upper
 64 100
 66 13.8 26.4 39.6#

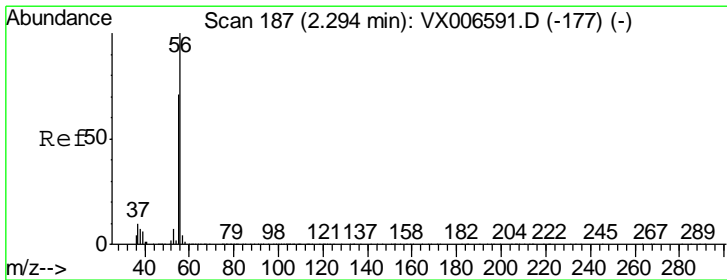
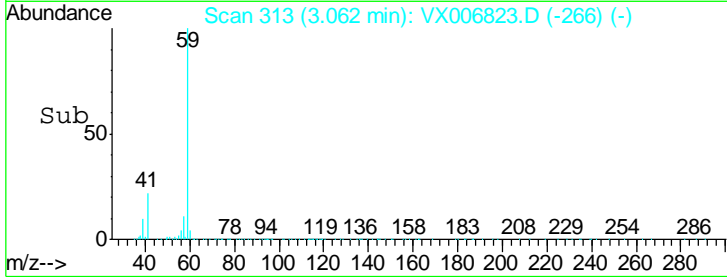
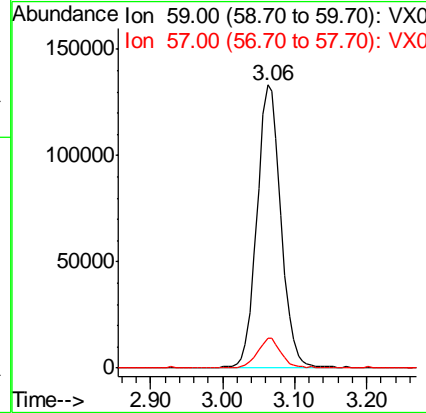
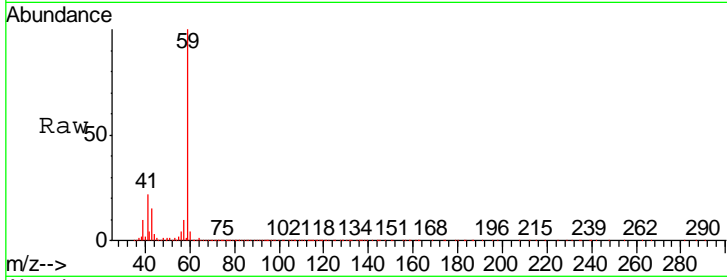




#11
 Tert butyl alcohol
 Concen: 175.016 ug/l
 RT: 3.06 min Scan# 313
 Delta R.T. -0.01 min
 Lab File: VX006823.D
 Acq: 26 Dec 2018 17:23

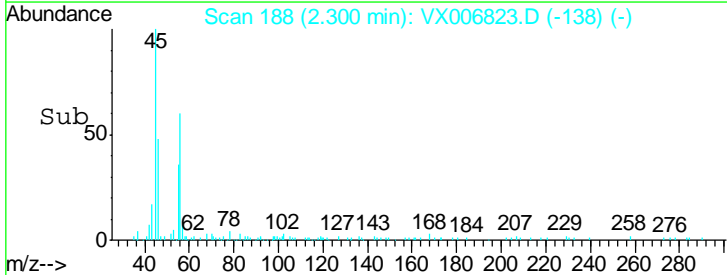
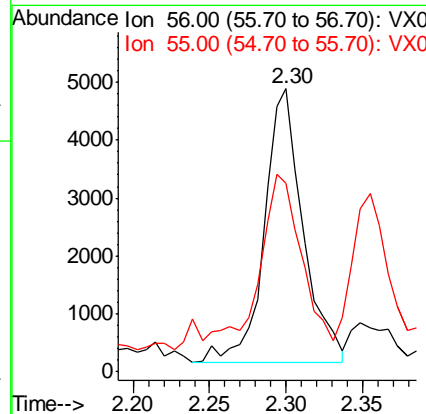
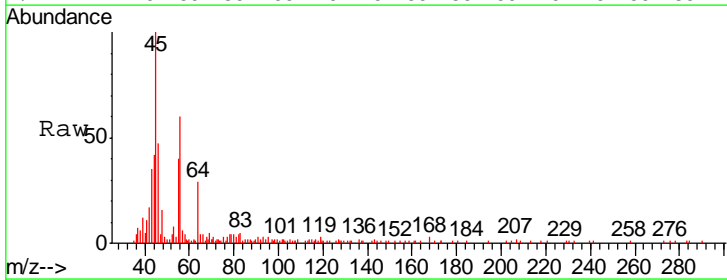
Instrument :
 MSVOA_X
 ClientSampled :
 COMP-4

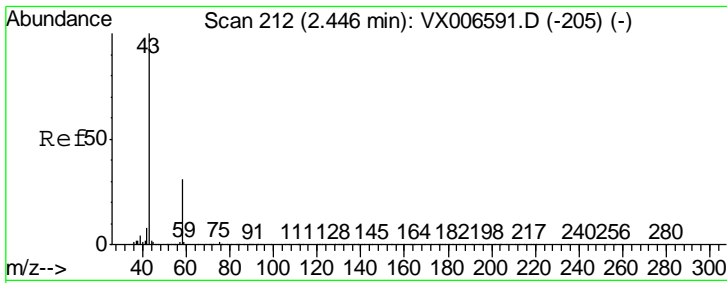
Tgt Ion: 59 Resp: 309573
 Ion Ratio Lower Upper
 59 100
 57 10.1 8.5 12.7



#13
 Acrolein
 Concen: 6.950 ug/l
 RT: 2.30 min Scan# 188
 Delta R.T. 0.01 min
 Lab File: VX006823.D
 Acq: 26 Dec 2018 17:23

Tgt Ion: 56 Resp: 8293
 Ion Ratio Lower Upper
 56 100
 55 68.5 58.2 87.4

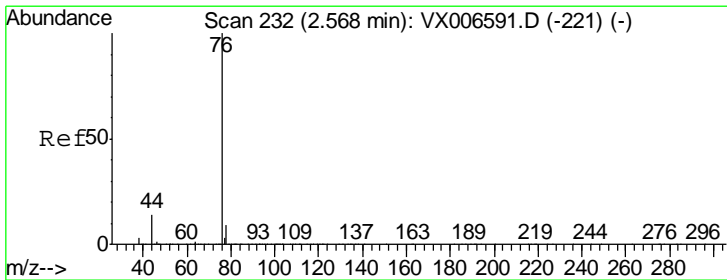
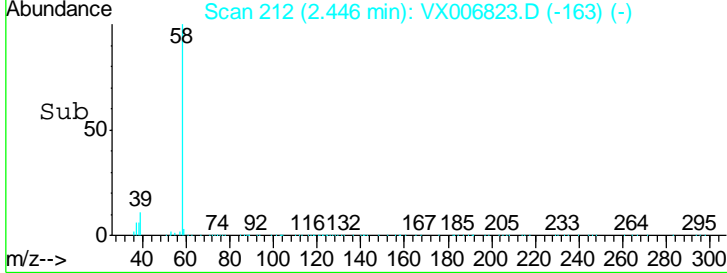
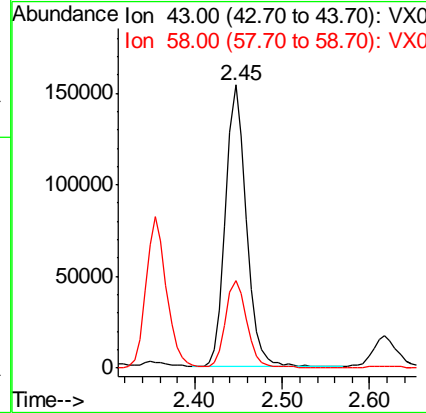
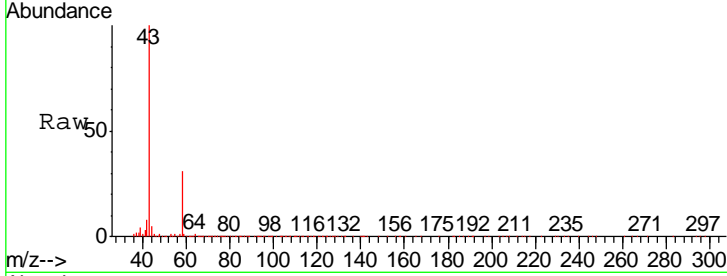




#16
 Acetone
 Concen: 68.892 ug/l
 RT: 2.45 min Scan# 212
 Delta R.T. -0.00 min
 Lab File: VX006823.D
 Acq: 26 Dec 2018 17:23

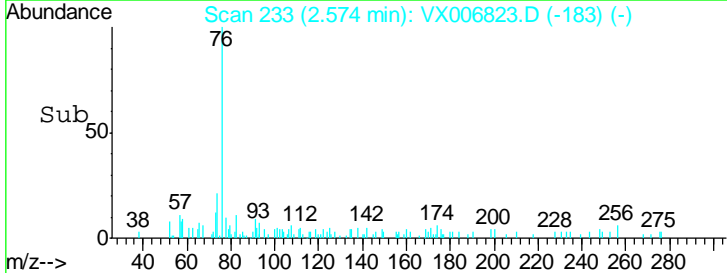
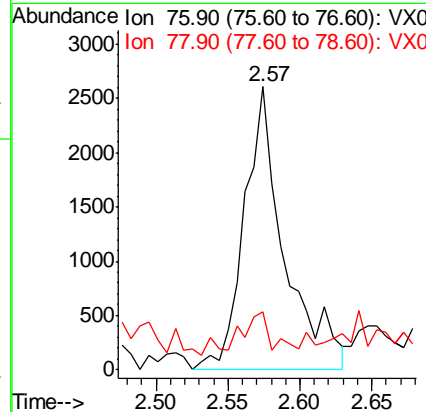
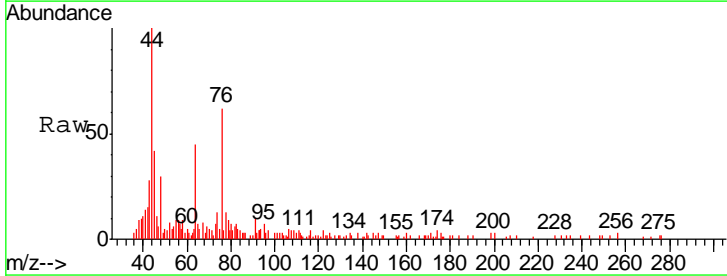
Instrument :
 MSVOA_X
 ClientSampled :
 COMP-4

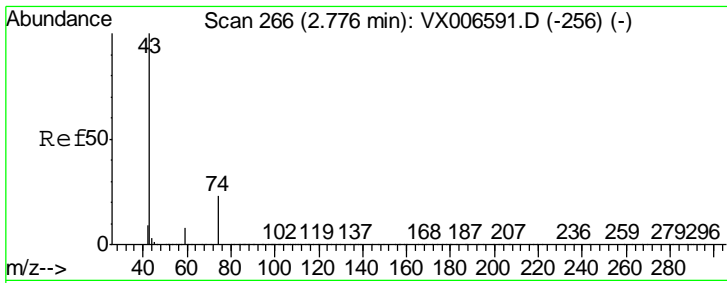
Tgt Ion: 43 Resp: 250860
 Ion Ratio Lower Upper
 43 100
 58 30.8 25.0 37.6



#17
 Carbon Disulfide
 Concen: 0.292 ug/l
 RT: 2.57 min Scan# 233
 Delta R.T. 0.01 min
 Lab File: VX006823.D
 Acq: 26 Dec 2018 17:23

Tgt Ion: 76 Resp: 5069
 Ion Ratio Lower Upper
 76 100
 78 13.2 7.0 10.6#

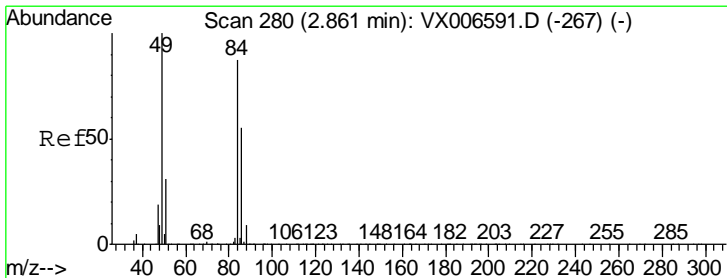
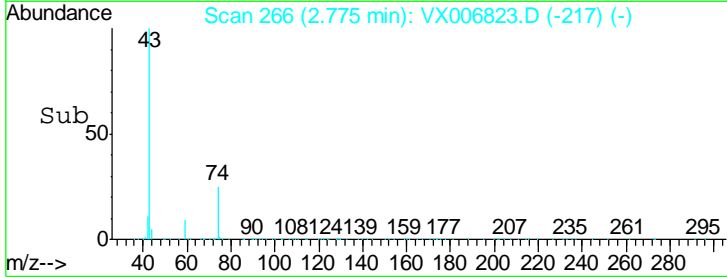
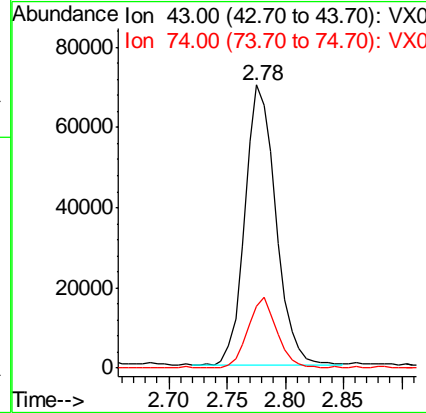
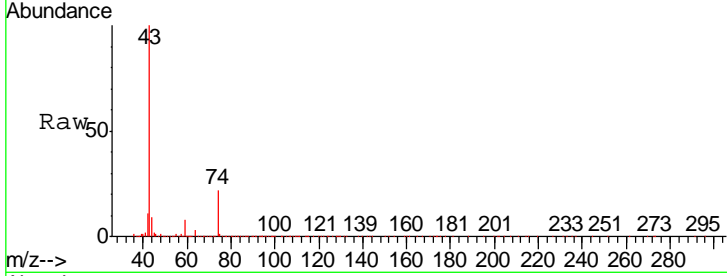




#18
 Methyl Acetate
 Concen: 12.116 ug/l
 RT: 2.78 min Scan# 266
 Delta R.T. -0.00 min
 Lab File: VX006823.D
 Acq: 26 Dec 2018 17:23

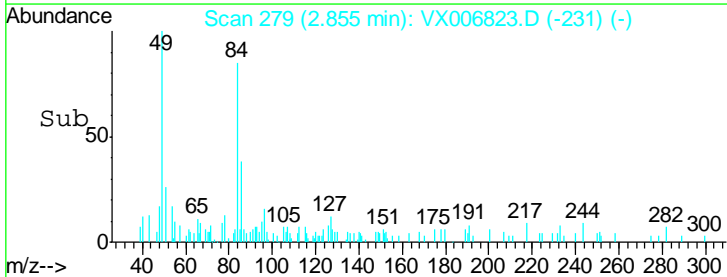
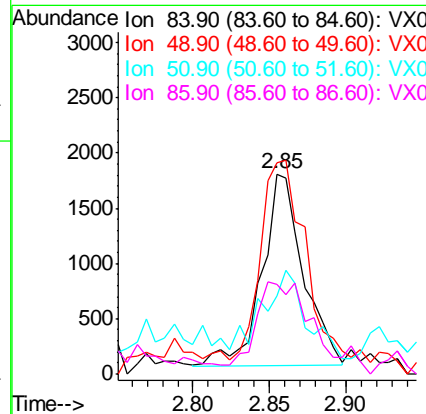
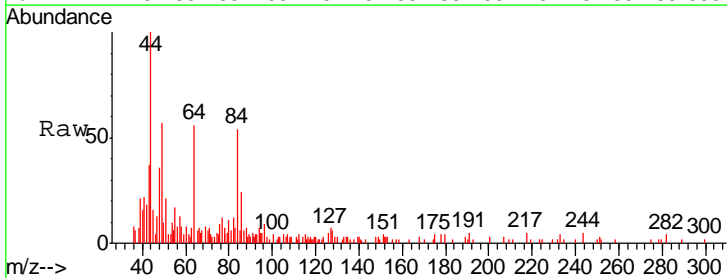
Instrument :
 MSVOA_X
 ClientSampled :
 COMP-4

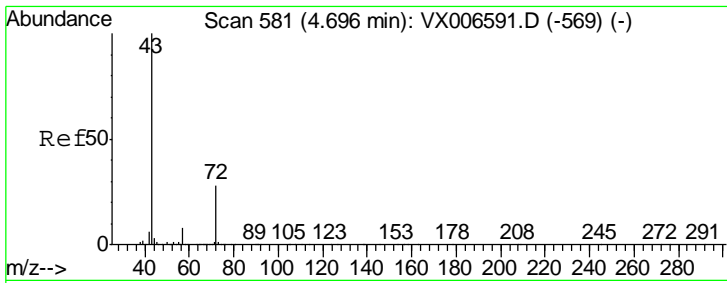
Tgt Ion	Resp	Lower	Upper
43	129735		
74	23.4	18.6	28.0



#20
 Methylene Chloride
 Concen: 0.437 ug/l
 RT: 2.85 min Scan# 279
 Delta R.T. -0.01 min
 Lab File: VX006823.D
 Acq: 26 Dec 2018 17:23

Tgt Ion	Resp	Lower	Upper
84	3289		
49	99.0	91.8	137.6
51	32.9	28.5	42.7
86	39.5	50.2	75.2#

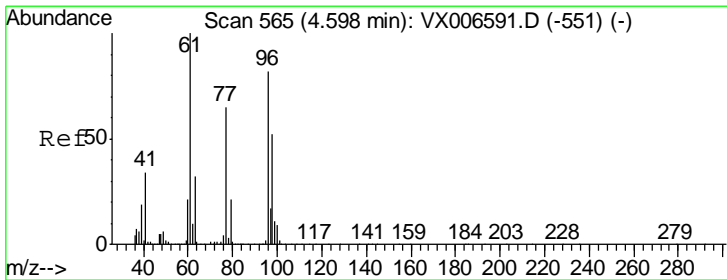
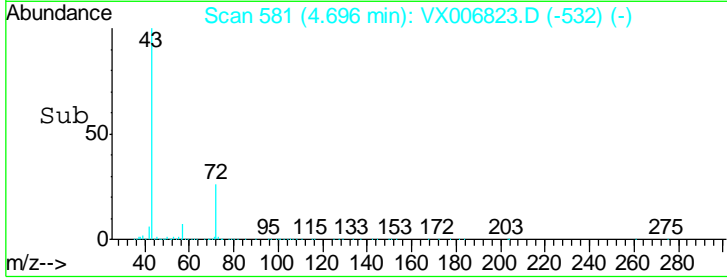
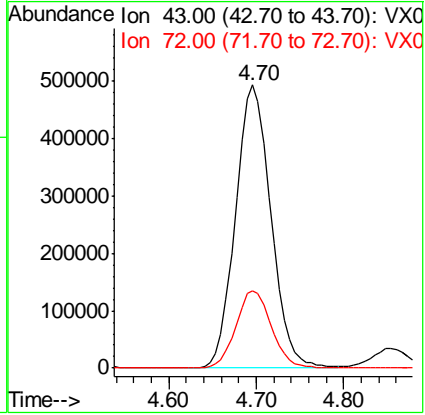
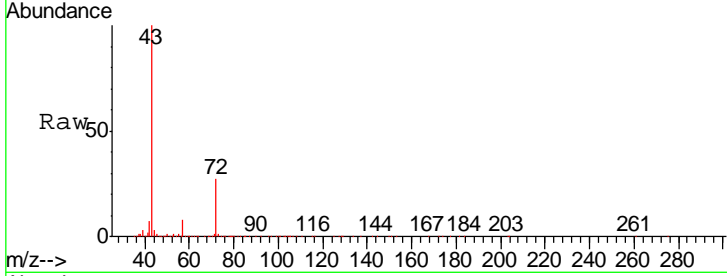




#25
 2-Butanone
 Concen: 270.055 ug/l
 RT: 4.70 min Scan# 581
 Delta R.T. -0.00 min
 Lab File: VX006823.D
 Acq: 26 Dec 2018 17:23

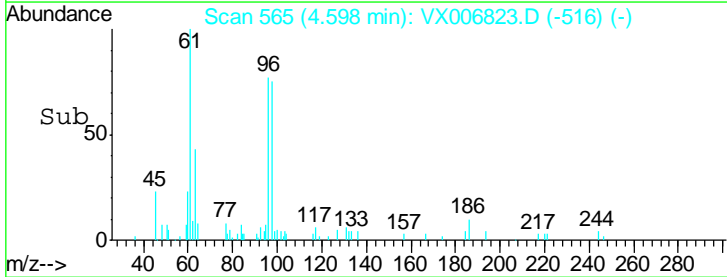
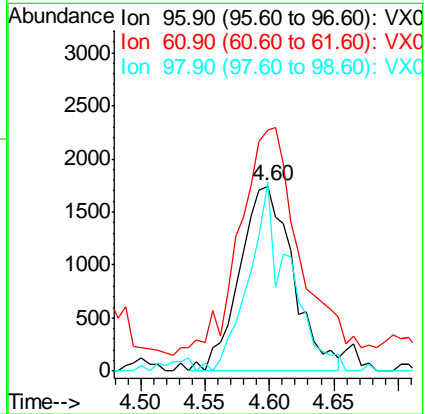
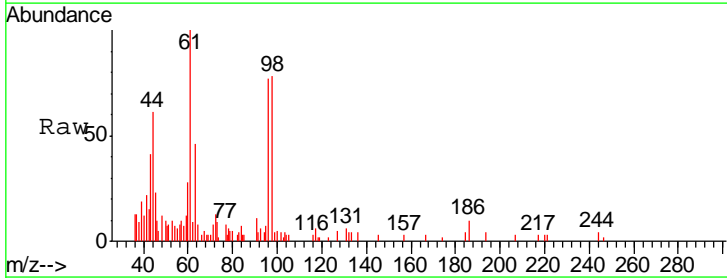
Instrument :
 MSVOA_X
 ClientSampled :
 COMP-4

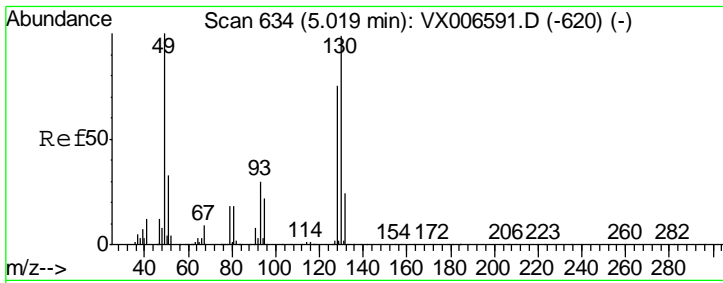
Tgt Ion: 43 Resp: 1383228
 Ion Ratio Lower Upper
 43 100
 72 27.2 22.4 33.6



#27
 cis-1,2-Dichloroethene
 Concen: 0.623 ug/l
 RT: 4.60 min Scan# 565
 Delta R.T. -0.00 min
 Lab File: VX006823.D
 Acq: 26 Dec 2018 17:23

Tgt Ion: 96 Resp: 5003
 Ion Ratio Lower Upper
 96 100
 61 138.2 0.0 258.6
 98 76.5 0.0 132.0

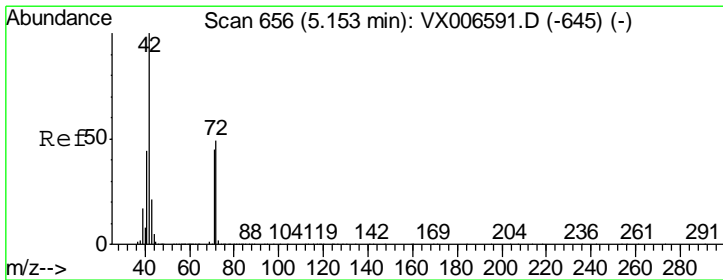
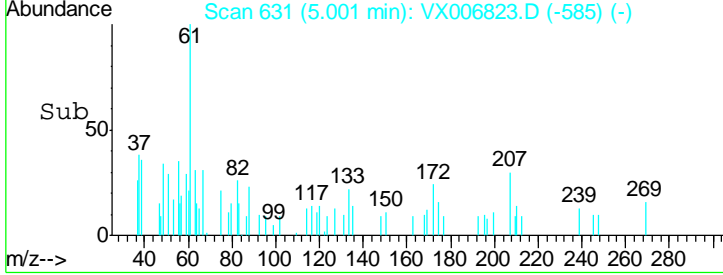
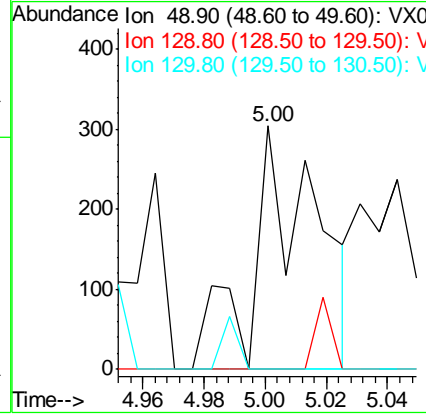
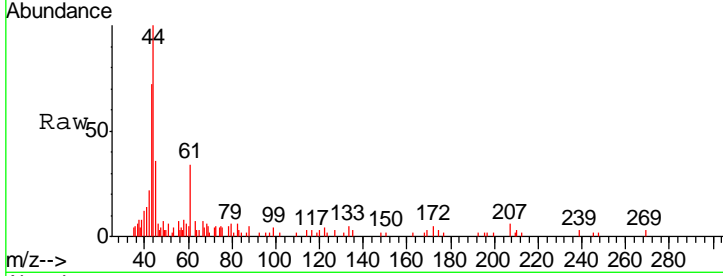




#28
 Bromochloromethane
 Concen: Below Cal
 RT: 5.00 min Scan# 631
 Delta R.T. -0.02 min
 Lab File: VX006823.D
 Acq: 26 Dec 2018 17:23

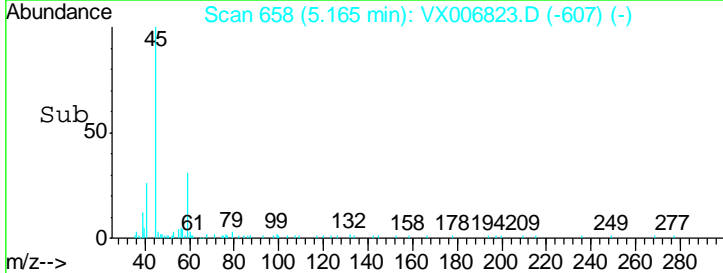
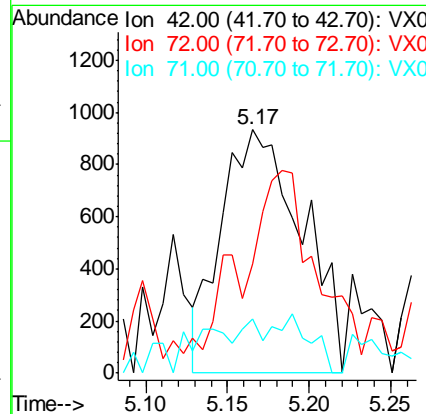
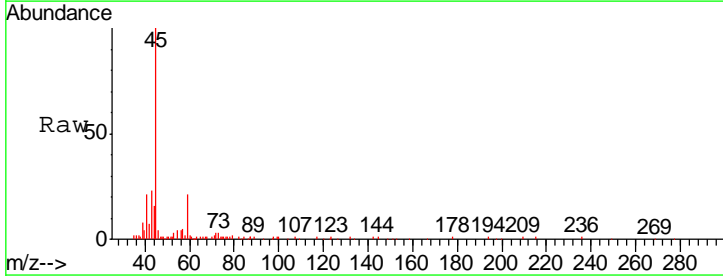
Instrument : MSVOA_X
 ClientSampled : COMP-4

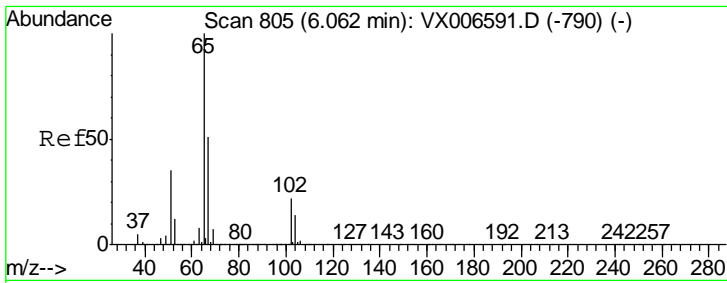
Tgt Ion	Resp	Lower	Upper
49	100		
129	0.0	0.0	5.4
130	5.4	77.7	116.5#



#29
 Tetrahydrofuran
 Concen: 0.957 ug/l
 RT: 5.17 min Scan# 658
 Delta R.T. 0.01 min
 Lab File: VX006823.D
 Acq: 26 Dec 2018 17:23

Tgt Ion	Resp	Lower	Upper
42	100		
72	15.2	38.9	58.3#
71	1.7	36.2	54.4#

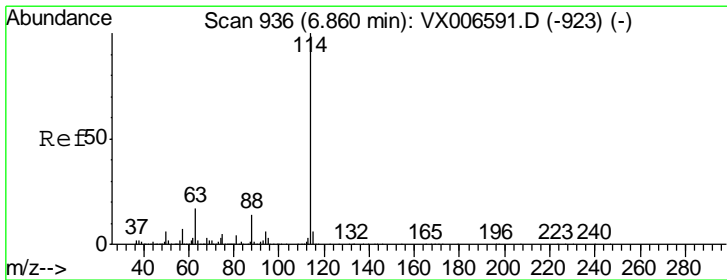
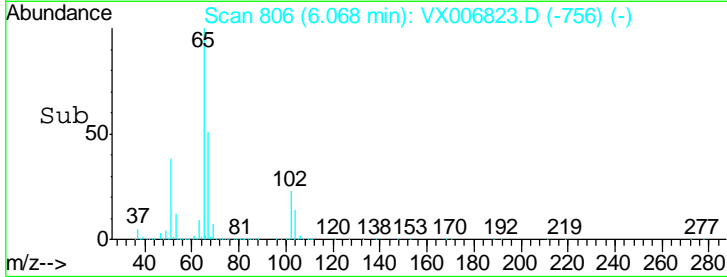
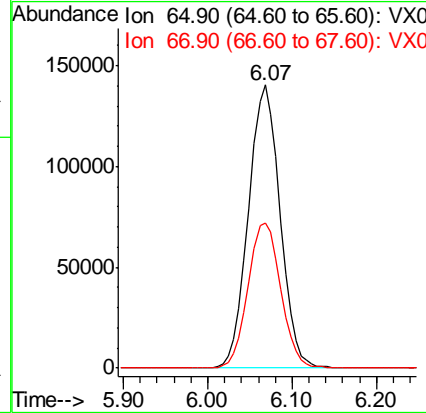
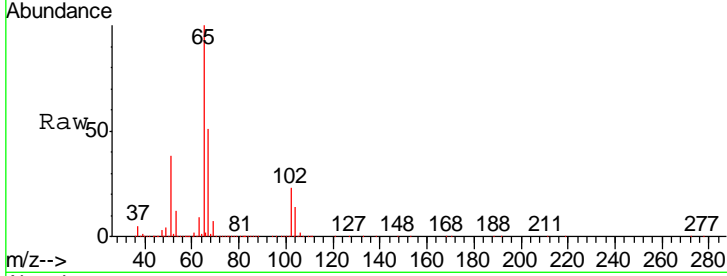




#33
 1,2-Dichloroethane-d4
 Concen: 44.955 ug/l
 RT: 6.07 min Scan# 806
 Delta R.T. 0.01 min
 Lab File: VX006823.D
 Acq: 26 Dec 2018 17:23

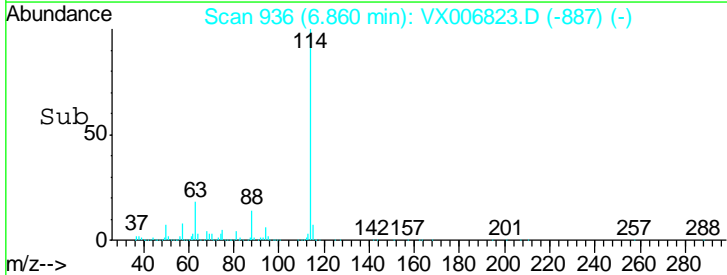
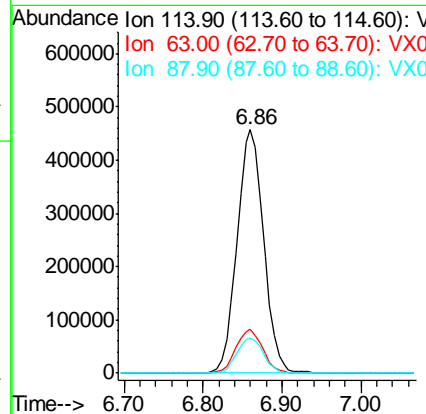
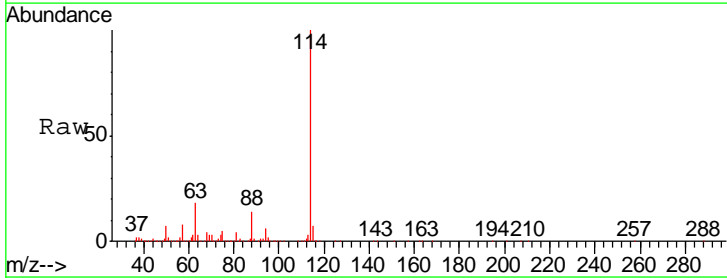
Instrument : MSVOA_X
 ClientSampled : COMP-4

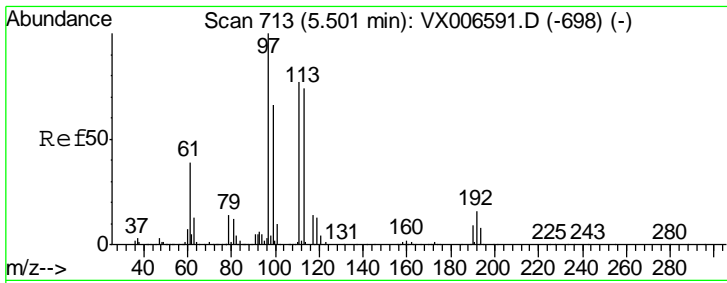
Tgt Ion	Resp	Lower	Upper
65	100		
67	53.4	0.0	105.0



#34
 1,4-Difluorobenzene
 Concen: 50.000 ug/l
 RT: 6.86 min Scan# 936
 Delta R.T. -0.00 min
 Lab File: VX006823.D
 Acq: 26 Dec 2018 17:23

Tgt Ion	Resp	Lower	Upper
114	100		
63	18.3	0.0	34.8
88	14.4	0.0	28.8

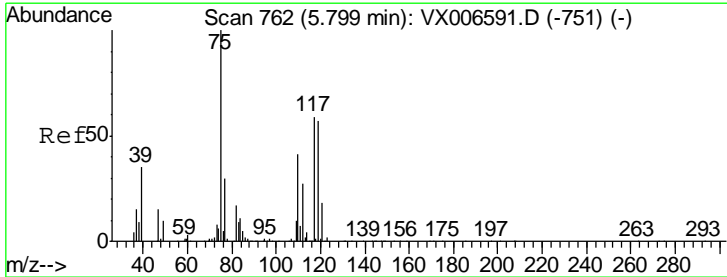
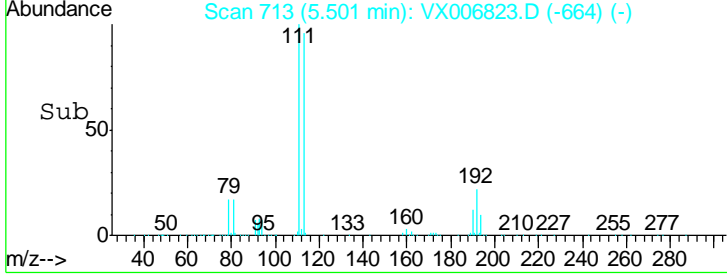
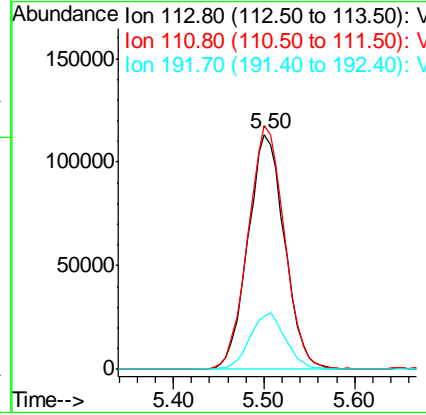
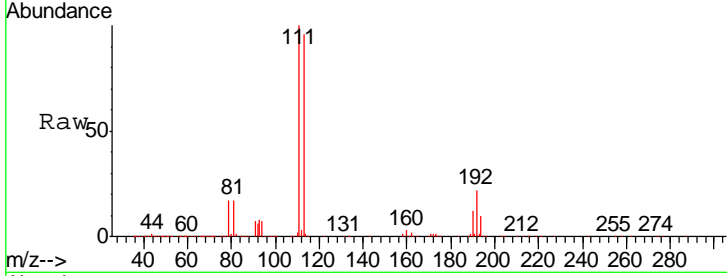




#35
 Dibromofluoromethane
 Concen: 46.655 ug/l
 RT: 5.50 min Scan# 713
 Delta R.T. -0.00 min
 Lab File: VX006823.D
 Acq: 26 Dec 2018 17:23

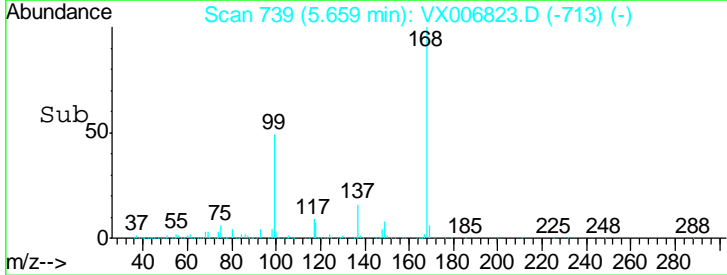
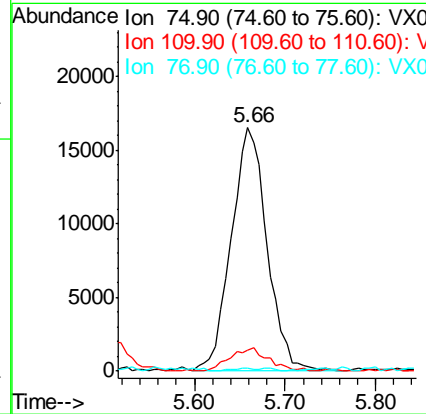
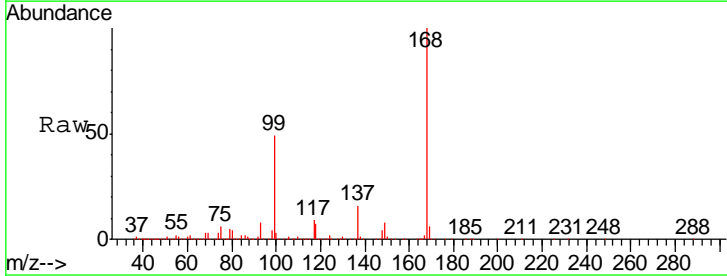
Instrument :
 MSVOA_X
 ClientSampled :
 COMP-4

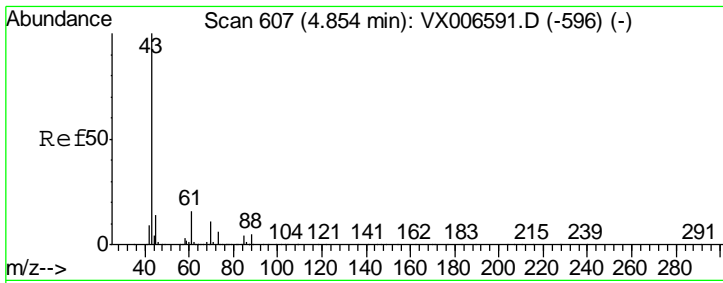
Tgt Ion	Resp	Lower	Upper
113	100		
111	103.7	81.6	122.4
192	23.4	16.7	25.1



#36
 1,1-Dichloropropene
 Concen: 5.110 ug/l
 RT: 5.66 min Scan# 739
 Delta R.T. -0.14 min
 Lab File: VX006823.D
 Acq: 26 Dec 2018 17:23

Tgt Ion	Resp	Lower	Upper
75	100		
110	10.3	20.2	60.5#
77	0.9	24.8	37.2#

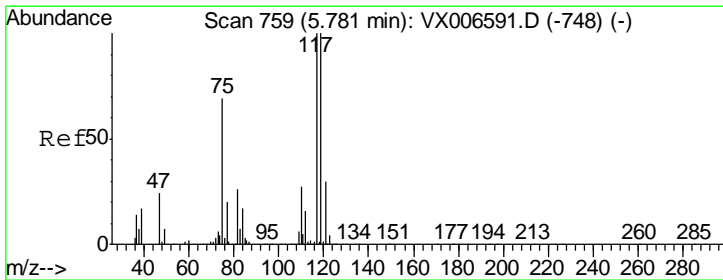
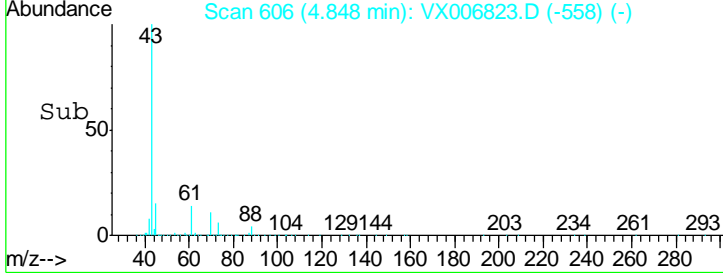
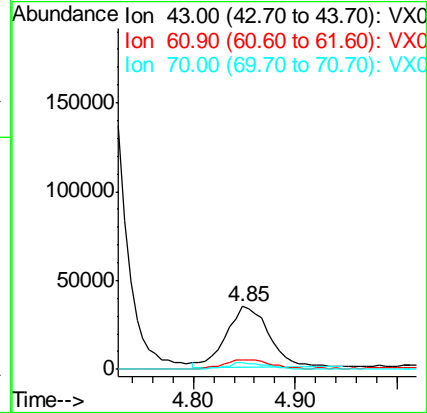
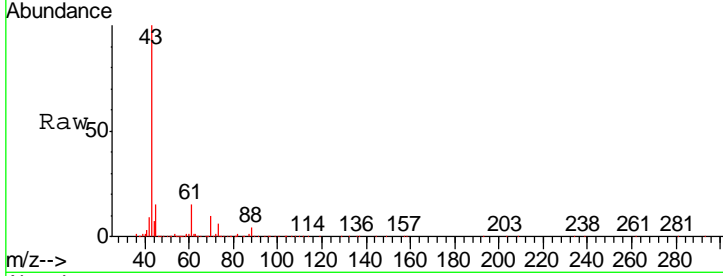




#37
 Ethyl Acetate
 Concen: 10.626 ug/l
 RT: 4.85 min Scan# 606
 Delta R.T. -0.01 min
 Lab File: VX006823.D
 Acq: 26 Dec 2018 17:23

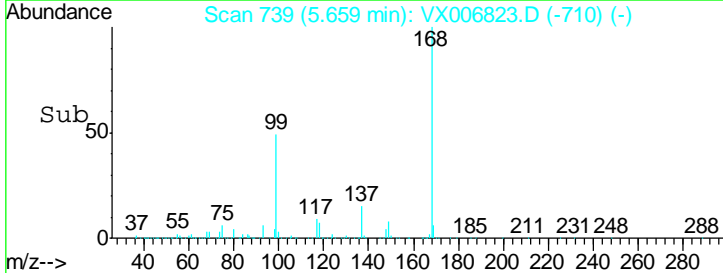
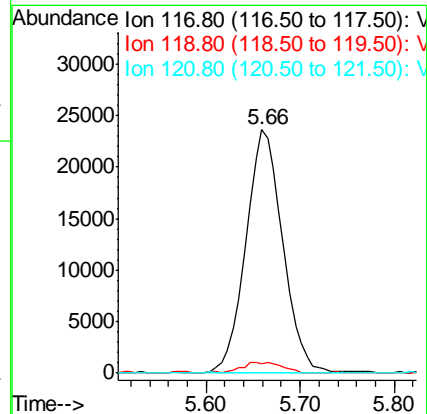
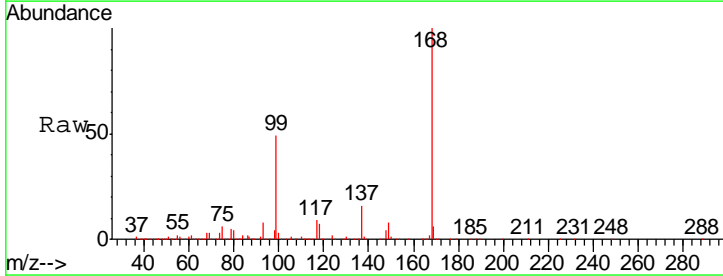
Instrument :
 MSVOA_X
 ClientSampled :
 COMP-4

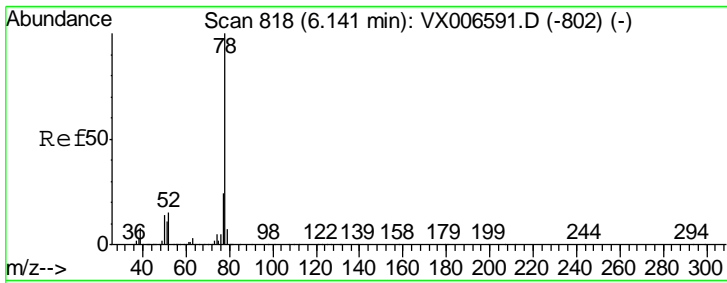
Tgt Ion	Resp	Lower	Upper
43	98079		
61	17.0	11.9	17.9
70	10.4	9.7	14.5



#38
 Carbon Tetrachloride
 Concen: 7.527 ug/l
 RT: 5.66 min Scan# 739
 Delta R.T. -0.12 min
 Lab File: VX006823.D
 Acq: 26 Dec 2018 17:23

Tgt Ion	Resp	Lower	Upper
117	64871		
119	3.8	79.4	119.2#
121	0.0	24.0	36.0#

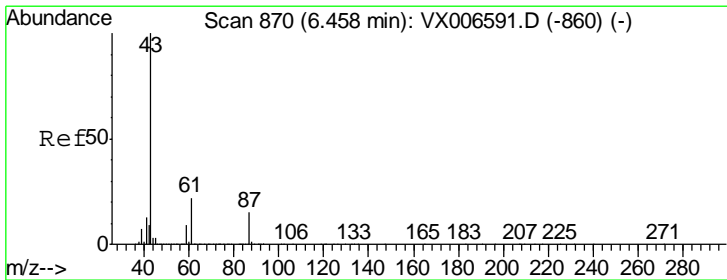
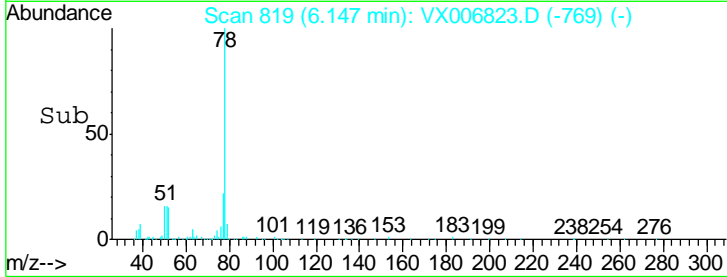
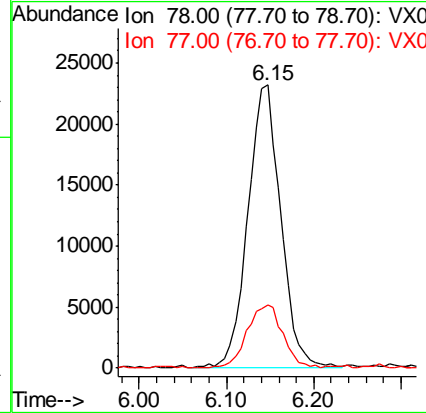
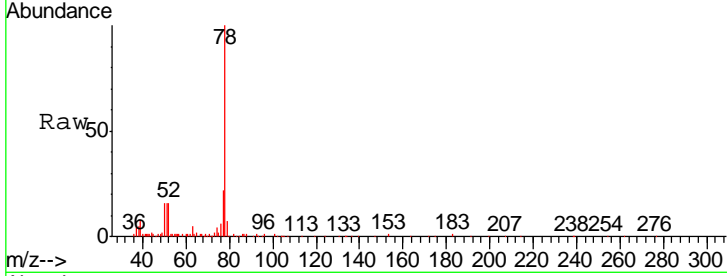




#40
Benzene
Concen: 2.257 ug/l
RT: 6.15 min Scan# 819
Delta R.T. 0.01 min
Lab File: VX006823.D
Acq: 26 Dec 2018 17:23

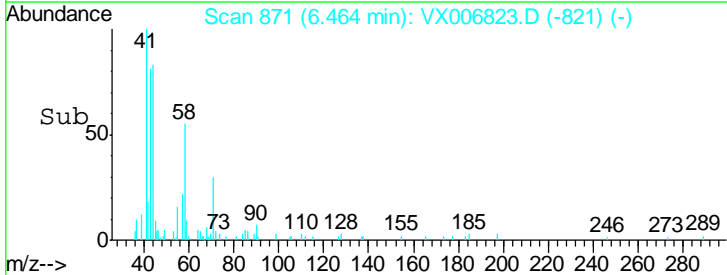
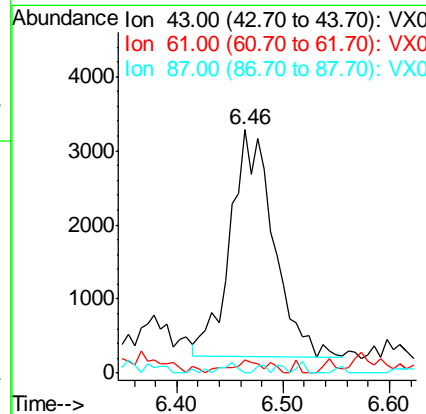
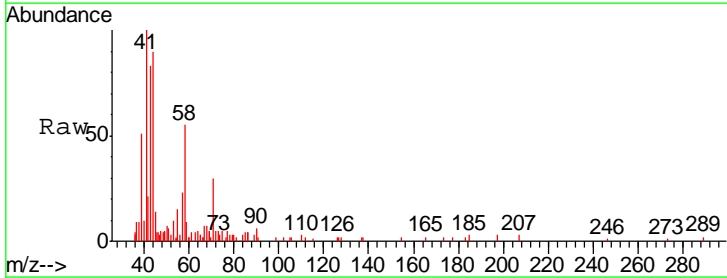
Instrument :
MSVOA_X
ClientSampled :
COMP-4

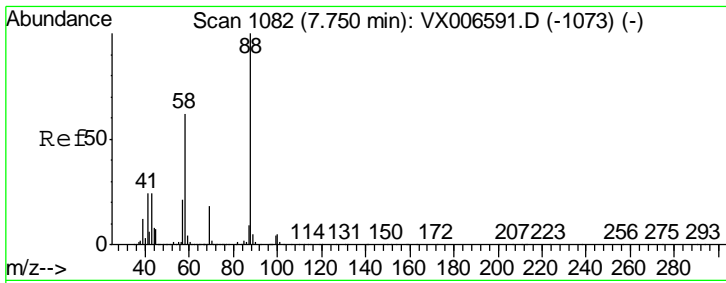
Tgt Ion	Resp	Lower	Upper
78	60844		
77	21.8	19.2	28.8



#43
Isopropyl Acetate
Concen: 0.622 ug/l
RT: 6.46 min Scan# 871
Delta R.T. 0.01 min
Lab File: VX006823.D
Acq: 26 Dec 2018 17:23

Tgt Ion	Resp	Lower	Upper
43	8736		
61	3.7	16.8	25.2#
87	1.6	12.4	18.6#

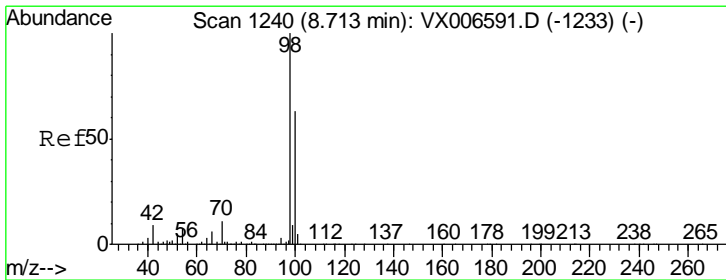
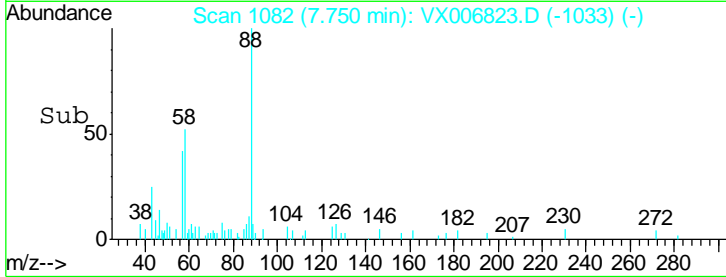
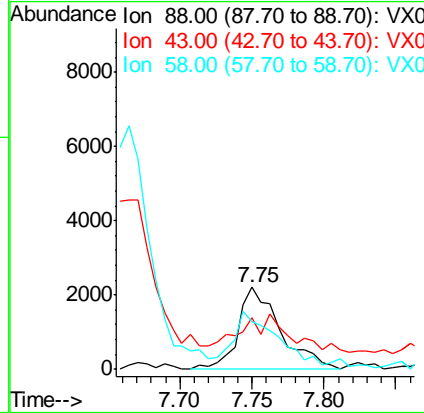
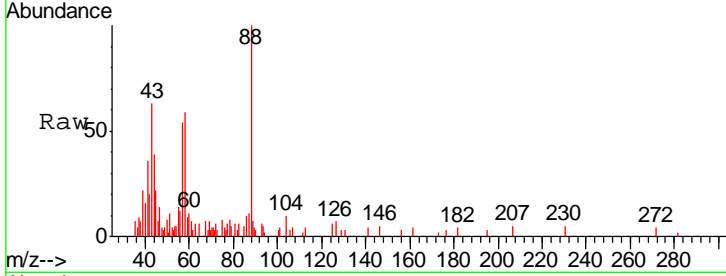




#49
 1,4-Dioxane
 Concen: 4.375 ug/l
 RT: 7.75 min Scan# 1082
 Delta R.T. 0.00 min
 Lab File: VX006823.D
 Acq: 26 Dec 2018 17:23

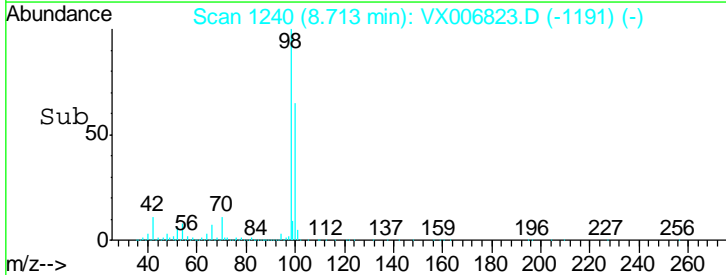
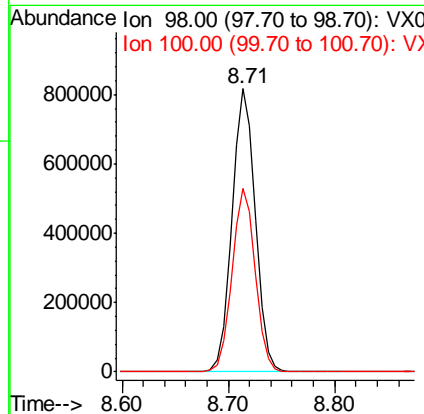
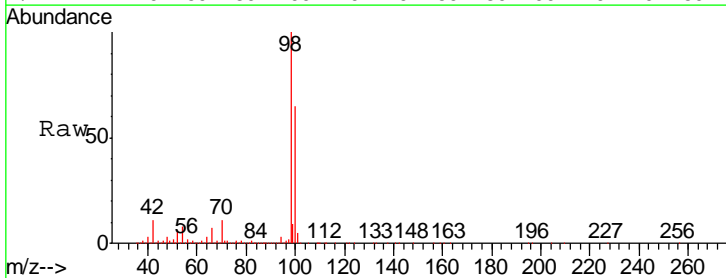
Instrument :
 MSVOA_X
 ClientSampled :
 COMP-4

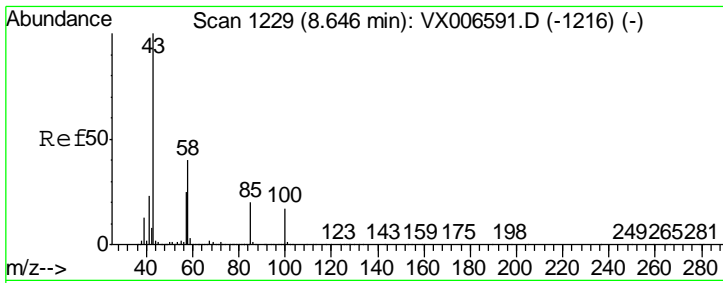
Tgt Ion	Resp	Lower	Upper
88	4516		
43	16.4	22.2	33.4#
58	61.6	51.0	76.4



#50
 Toluene-d8
 Concen: 49.194 ug/l
 RT: 8.71 min Scan# 1240
 Delta R.T. -0.00 min
 Lab File: VX006823.D
 Acq: 26 Dec 2018 17:23

Tgt Ion	Resp	Lower	Upper
98	1255789		
100	64.2	52.0	78.0

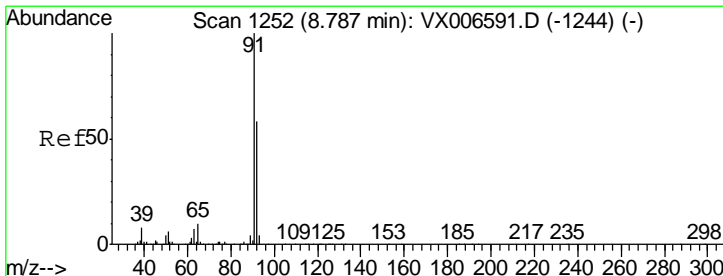
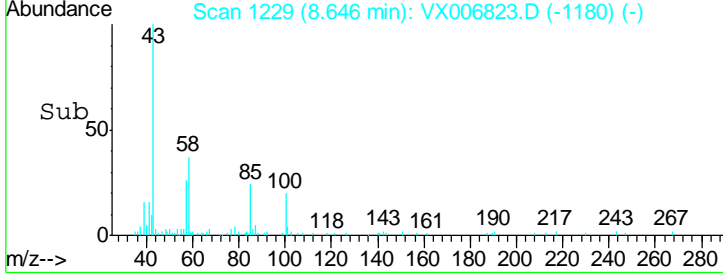
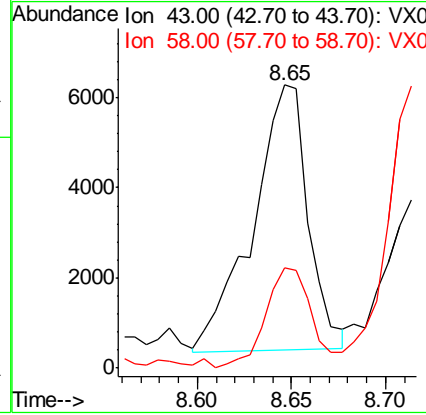
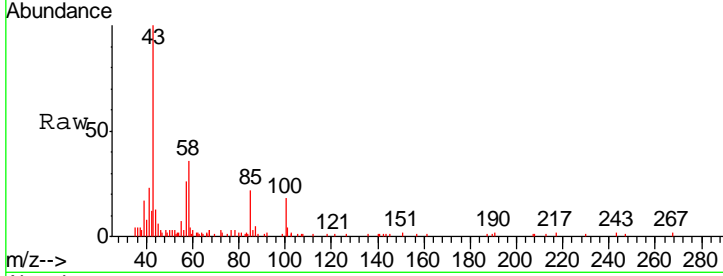




#51
 4-Methyl-2-Pentanone
 Concen: 1.338 ug/l
 RT: 8.65 min Scan# 1229
 Delta R.T. -0.00 min
 Lab File: VX006823.D
 Acq: 26 Dec 2018 17:23

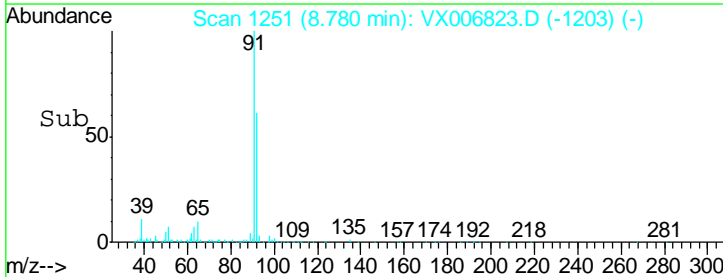
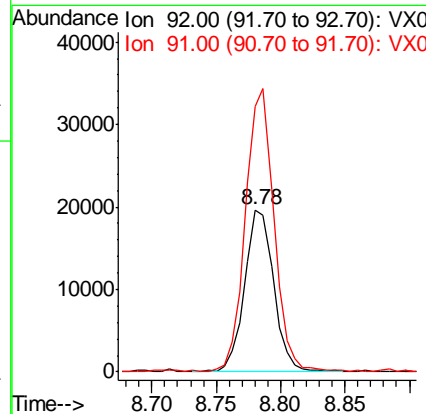
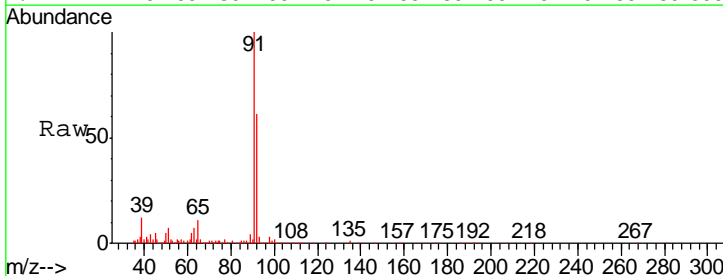
Instrument : MSVOA_X
 ClientSampled : COMP-4

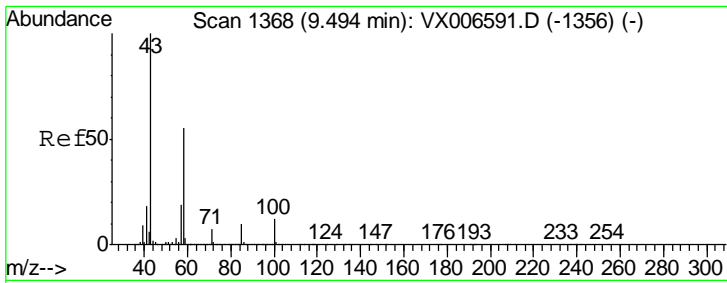
Tgt Ion	Resp	Lower	Upper
43	11957		
58	32.2	31.8	47.6



#52
 Toluene
 Concen: 1.769 ug/l
 RT: 8.78 min Scan# 1251
 Delta R.T. -0.01 min
 Lab File: VX006823.D
 Acq: 26 Dec 2018 17:23

Tgt Ion	Resp	Lower	Upper
92	30803		
91	171.0	137.6	206.4

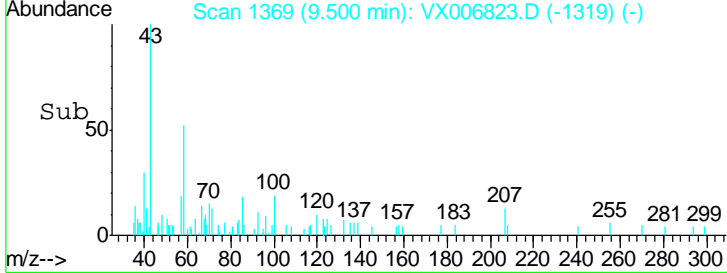
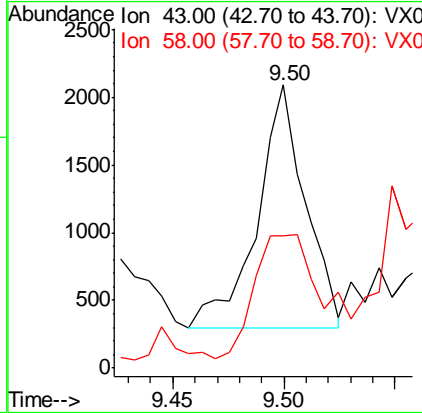
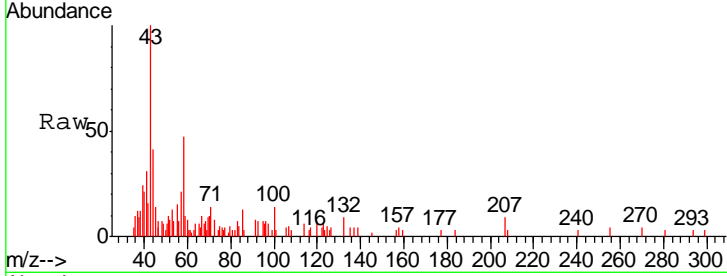




#59
 2-Hexanone
 Concen: 0.395 ug/l
 RT: 9.50 min Scan# 1369
 Delta R.T. 0.01 min
 Lab File: VX006823.D
 Acq: 26 Dec 2018 17:23

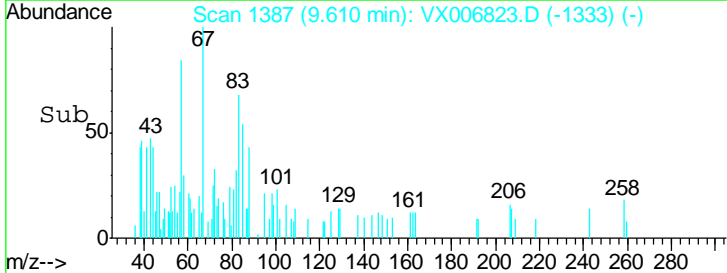
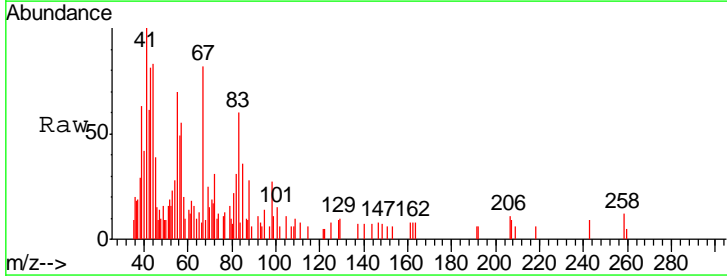
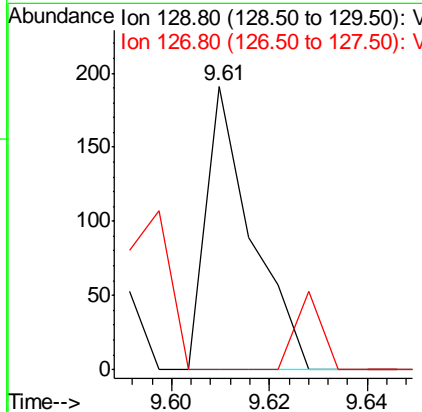
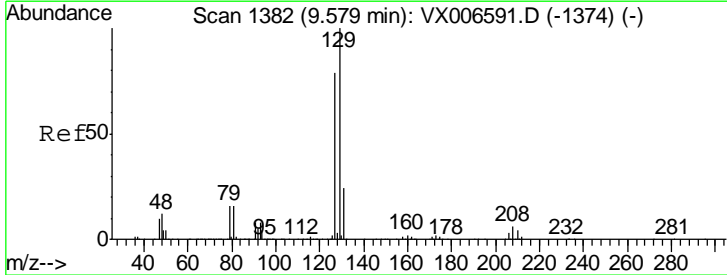
Instrument :
 MSVOA_X
ClientSampled :
 COMP-4

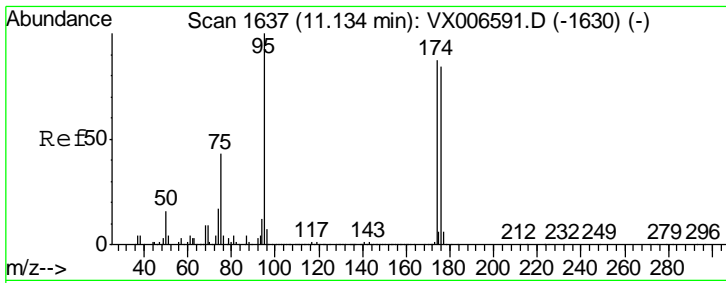
Tgt Ion	Resp	Lower	Upper
43	100		
58	72.4	27.7	83.1



#60
 Dibromochloromethane
 Concen: 2.340 ug/l
 RT: 9.61 min Scan# 1387
 Delta R.T. 0.03 min
 Lab File: VX006823.D
 Acq: 26 Dec 2018 17:23

Tgt Ion	Resp	Lower	Upper
129	100		
127	55.3	39.3	117.8

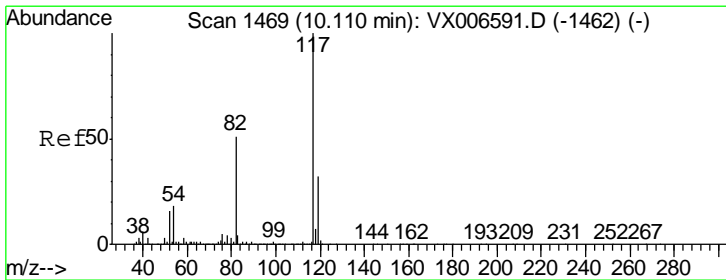
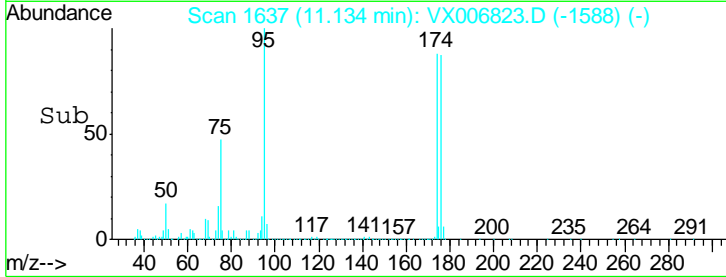
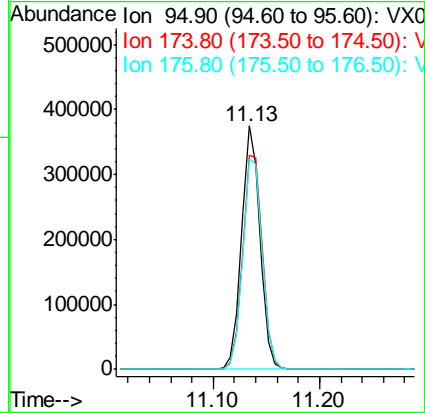
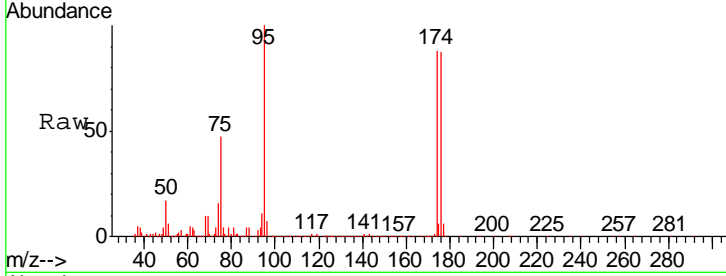




#62
 4-Bromofluorobenzene
 Concen: 48.963 ug/l
 RT: 11.13 min Scan# 1637
 Delta R.T. -0.00 min
 Lab File: VX006823.D
 Acq: 26 Dec 2018 17:23

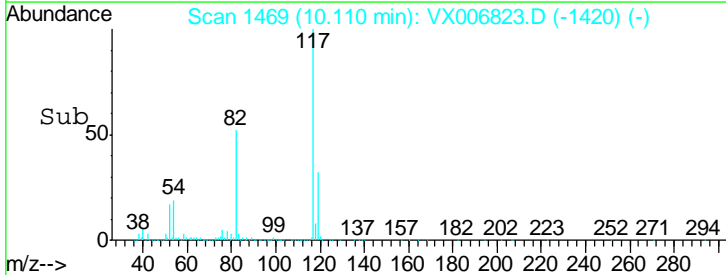
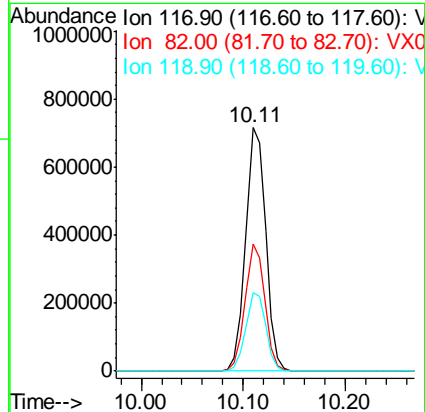
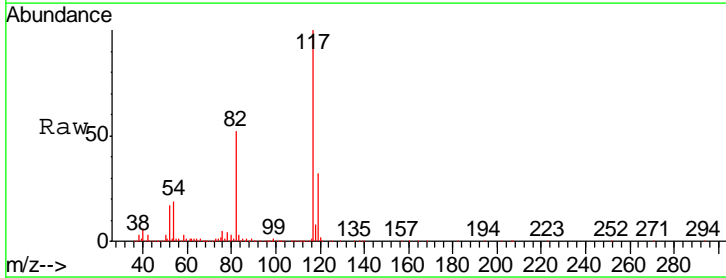
Instrument :
 MSVOA_X
 ClientSampled :
 COMP-4

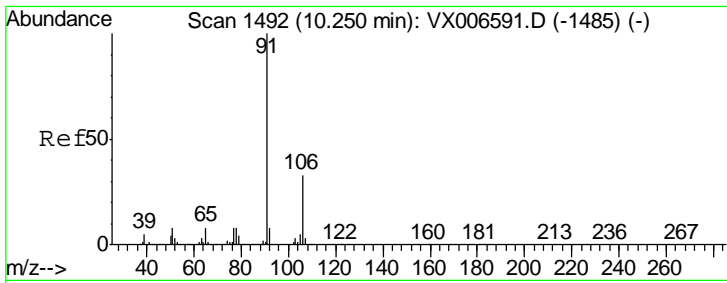
Tgt Ion	Resp	Lower	Upper
95	457767		
174	94.0	0.0	182.2
176	91.2	0.0	178.8



#63
 Chlorobenzene-d5
 Concen: 50.000 ug/l
 RT: 10.11 min Scan# 1469
 Delta R.T. -0.00 min
 Lab File: VX006823.D
 Acq: 26 Dec 2018 17:23

Tgt Ion	Resp	Lower	Upper
117	974402		
82	52.4	41.0	61.6
119	32.2	25.4	38.0

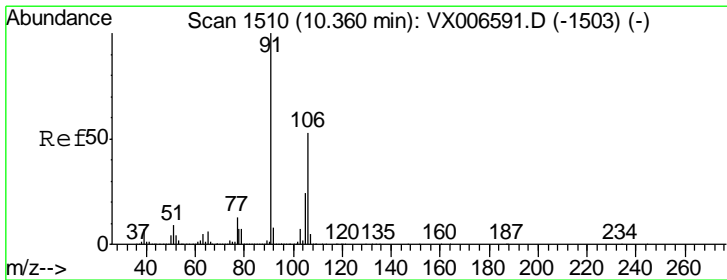
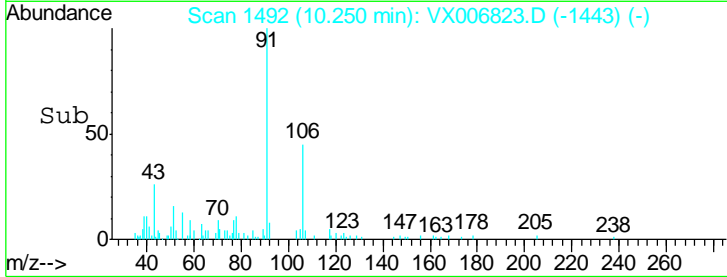
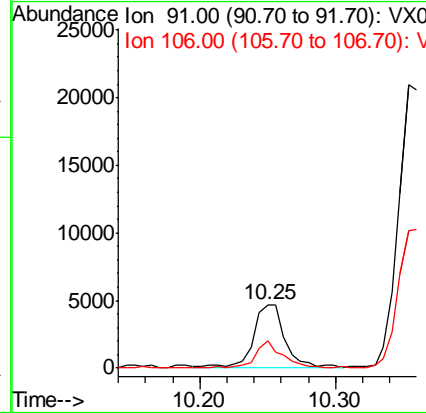
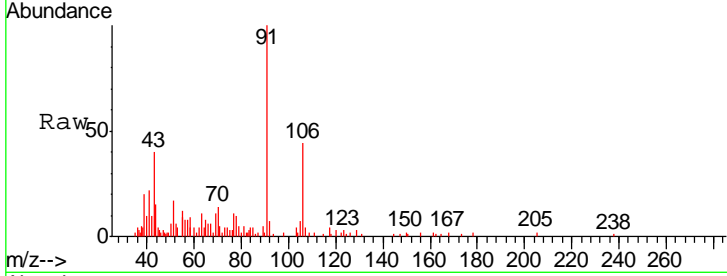




#67
 Ethyl Benzene
 Concen: 0.221 ug/l
 RT: 10.25 min Scan# 1492
 Delta R.T. -0.00 min
 Lab File: VX006823.D
 Acq: 26 Dec 2018 17:23

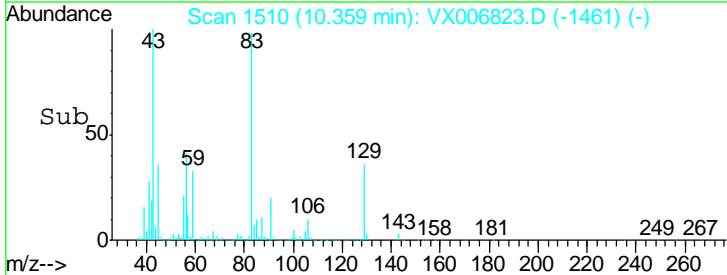
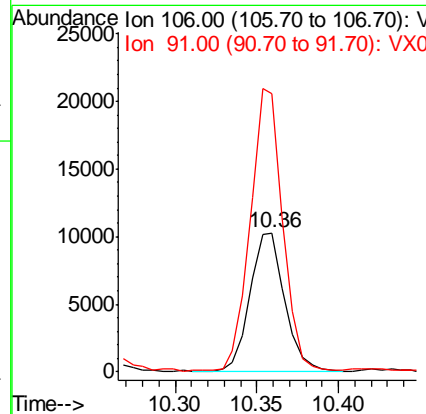
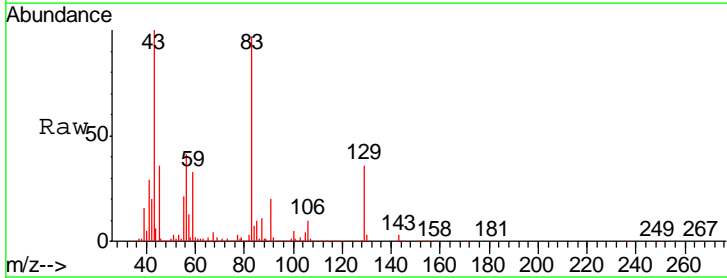
Instrument :
 MSVOA_X
 ClientSampled :
 COMP-4

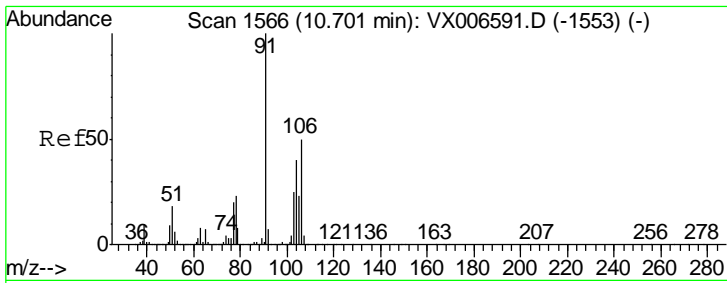
Tgt Ion: 91 Resp: 7433
 Ion Ratio Lower Upper
 91 100
 106 44.2 26.4 39.6#



#68
 m/p-Xylenes
 Concen: 1.154 ug/l
 RT: 10.36 min Scan# 1510
 Delta R.T. -0.00 min
 Lab File: VX006823.D
 Acq: 26 Dec 2018 17:23

Tgt Ion: 106 Resp: 15334
 Ion Ratio Lower Upper
 106 100
 91 186.7 155.8 233.6

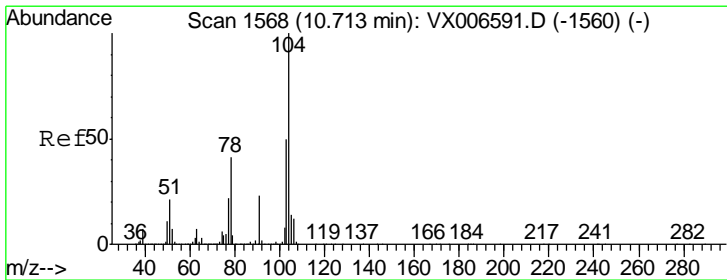
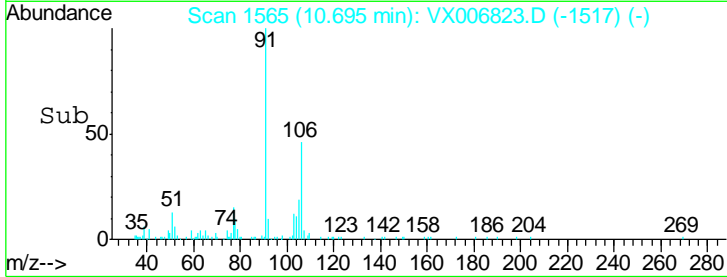
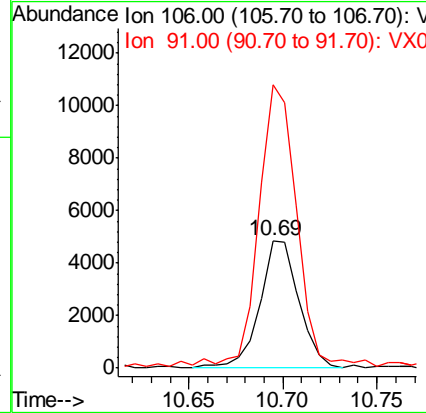
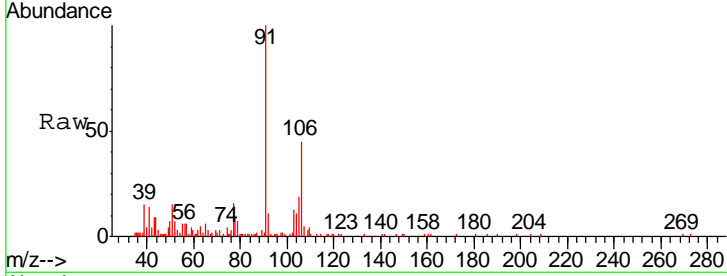




#69
 o-Xylene
 Concen: 0.536 ug/l
 RT: 10.69 min Scan# 1565
 Delta R.T. -0.01 min
 Lab File: VX006823.D
 Acq: 26 Dec 2018 17:23

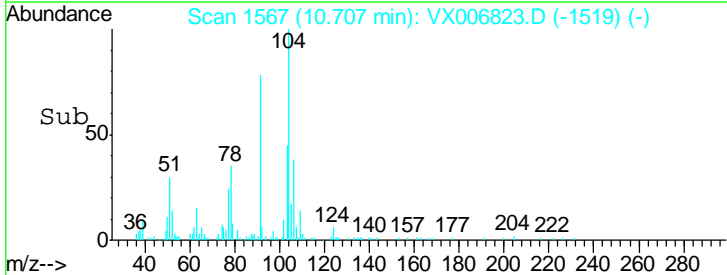
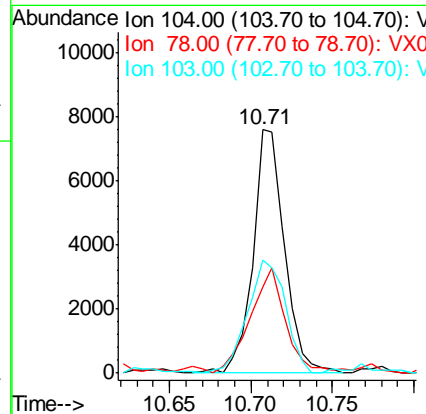
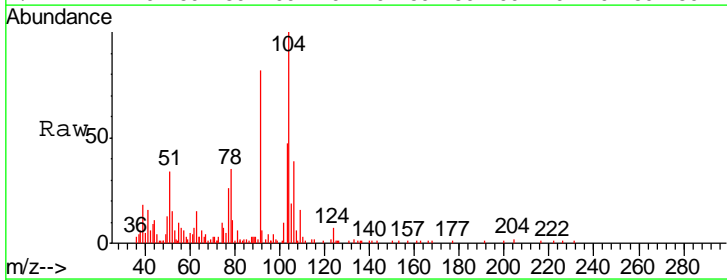
Instrument :
 MSVOA_X
 ClientSampled :
 COMP-4

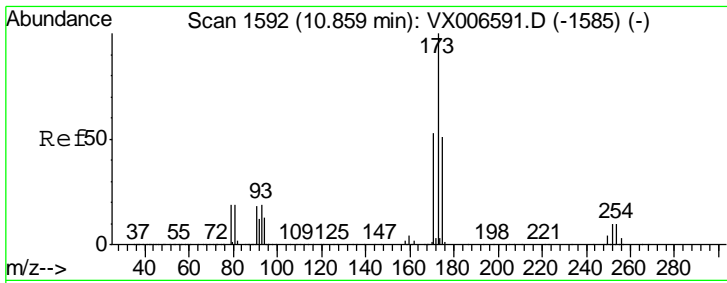
Tgt Ion:106 Resp: 7033
 Ion Ratio Lower Upper
 106 100
 91 214.7 101.3 303.7



#70
 Styrene
 Concen: 0.494 ug/l
 RT: 10.71 min Scan# 1567
 Delta R.T. -0.01 min
 Lab File: VX006823.D
 Acq: 26 Dec 2018 17:23

Tgt Ion:104 Resp: 10268
 Ion Ratio Lower Upper
 104 100
 78 49.2 37.7 56.5
 103 55.6 43.8 65.8

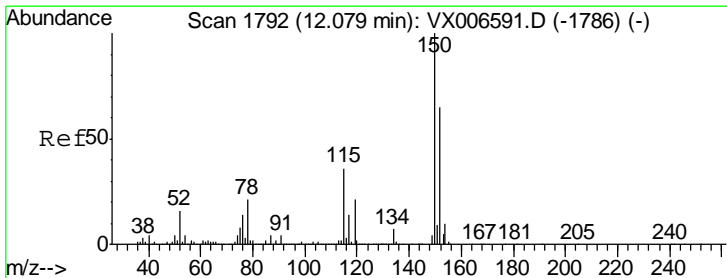
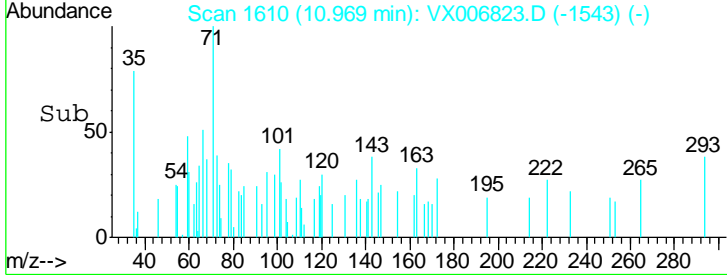
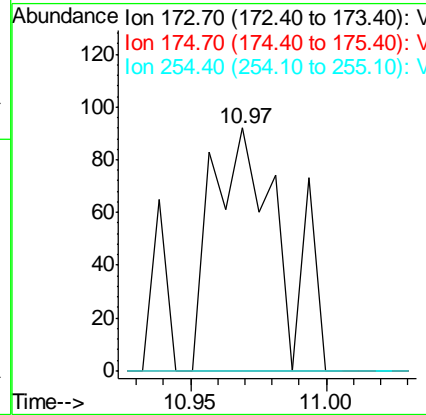
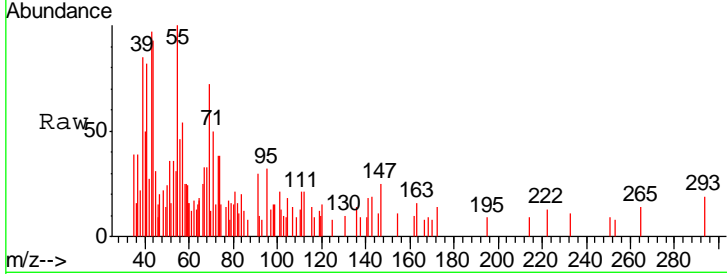




#71
 Bromoform
 Concen: 4.485 ug/l
 RT: 10.97 min Scan# 1610
 Delta R.T. 0.11 min
 Lab File: VX006823.D
 Acq: 26 Dec 2018 17:23

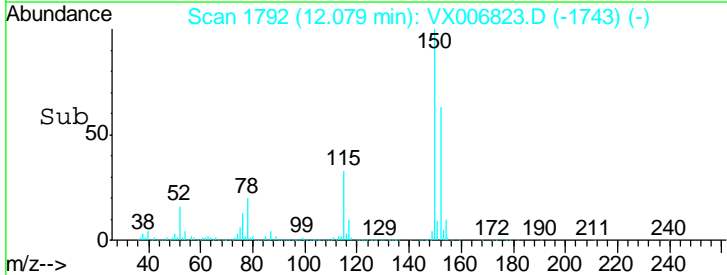
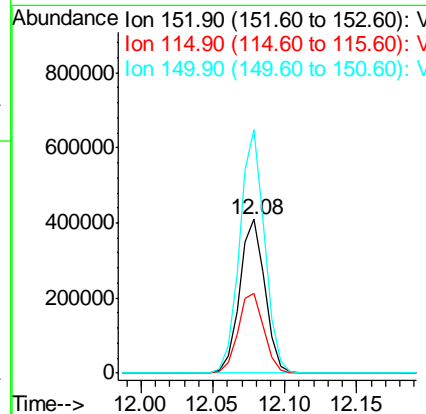
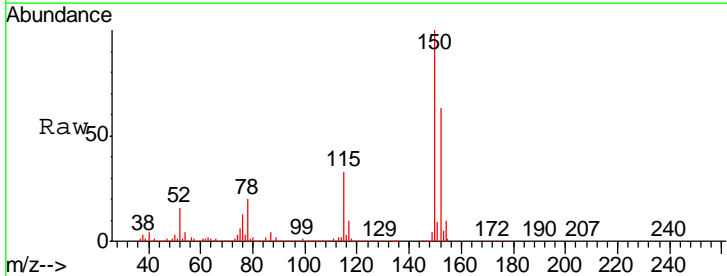
Instrument :
 MSVOA_X
 ClientSampled :
 COMP-4

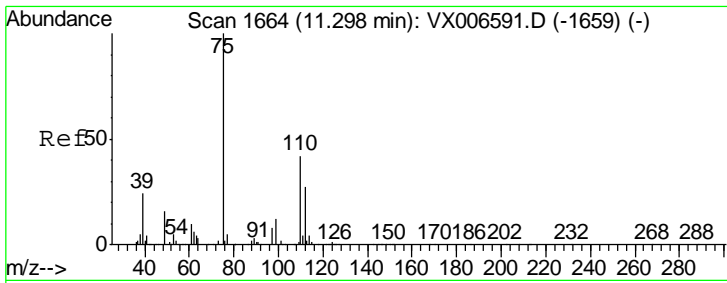
Tgt Ion	Resp	Lower	Upper
173	100		
175	0.0	24.7	74.1#
254	0.0	0.2	0.2#



#72
 1,4-Dichlorobenzene-d4
 Concen: 50.000 ug/l
 RT: 12.08 min Scan# 1792
 Delta R.T. -0.00 min
 Lab File: VX006823.D
 Acq: 26 Dec 2018 17:23

Tgt Ion	Resp	Lower	Upper
152	100		
115	53.6	39.1	117.2
150	156.6	0.0	344.8

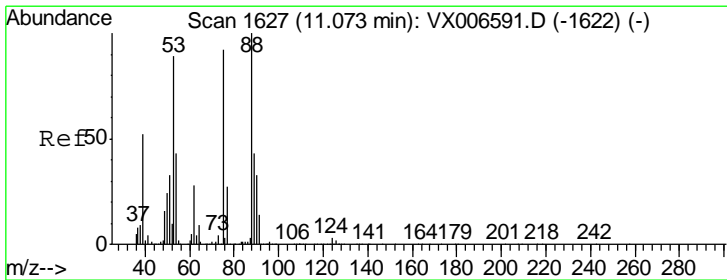
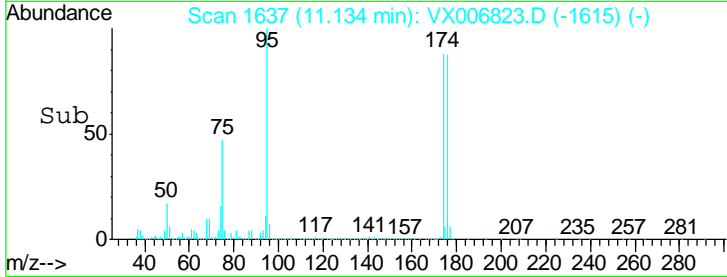
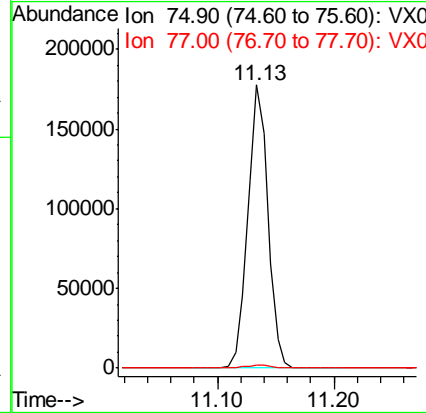
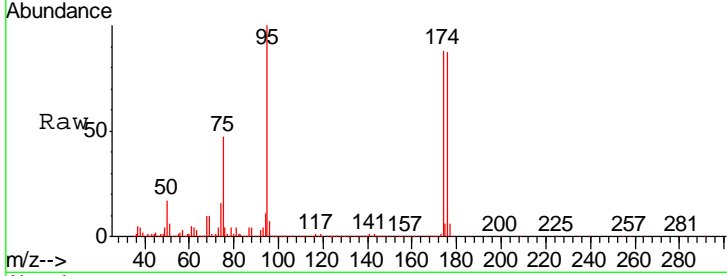




#76
 1,2,3-Trichloropropane
 Concen: 23.226 ug/l
 RT: 11.13 min Scan# 1637
 Delta R.T. -0.16 min
 Lab File: VX006823.D
 Acq: 26 Dec 2018 17:23

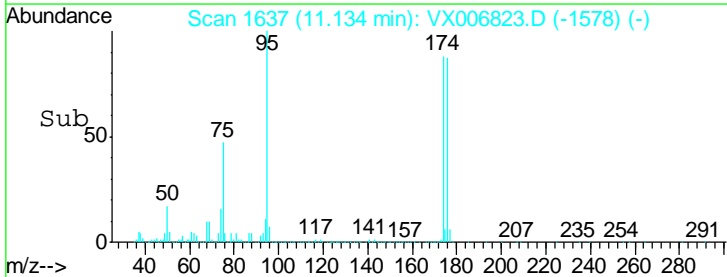
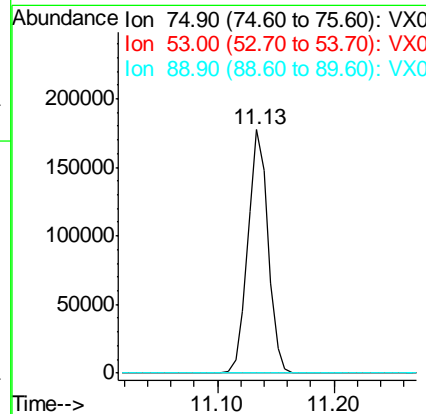
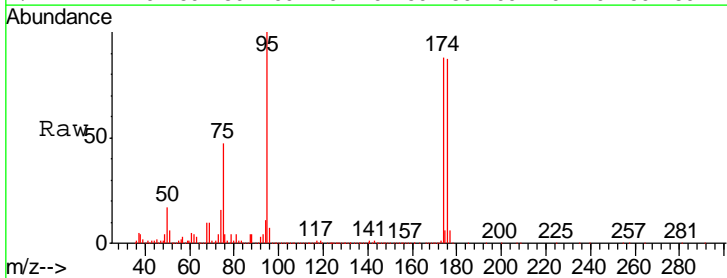
Instrument :
 MSVOA_X
 ClientSampled :
 COMP-4

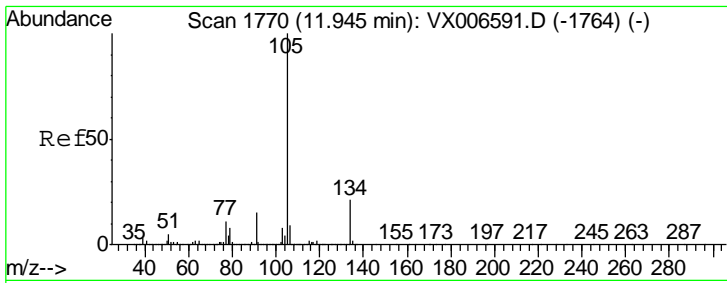
Tgt Ion: 75 Resp: 215472
 Ion Ratio Lower Upper
 75 100
 77 1.4 18.5 55.5#



#81
 trans-1,4-Dichloro-2-butene
 Concen: 68.932 ug/l
 RT: 11.13 min Scan# 1637
 Delta R.T. 0.06 min
 Lab File: VX006823.D
 Acq: 26 Dec 2018 17:23

Tgt Ion: 75 Resp: 215472
 Ion Ratio Lower Upper
 75 100
 53 0.2 79.7 119.5#
 89 0.0 38.0 57.0#

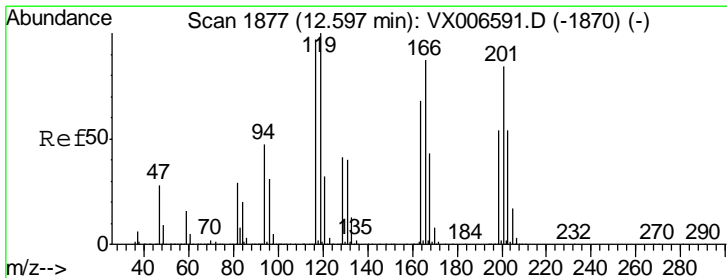
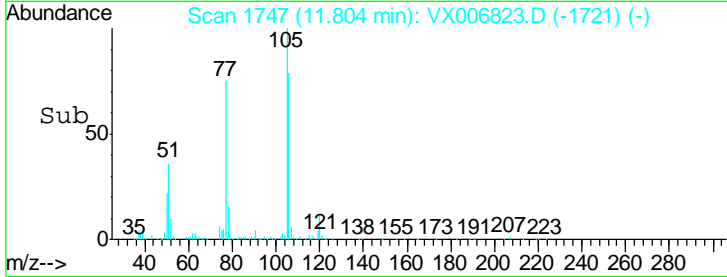
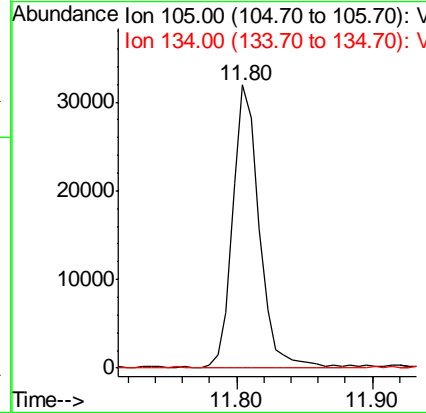
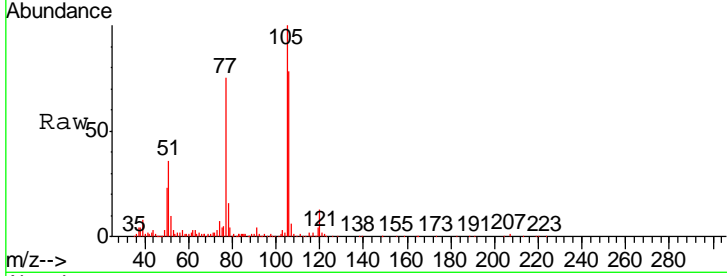




#85
 sec-Butylbenzene
 Concen: 1.242 ug/l
 RT: 11.80 min Scan# 1747
 Delta R.T. -0.14 min
 Lab File: VX006823.D
 Acq: 26 Dec 2018 17:23

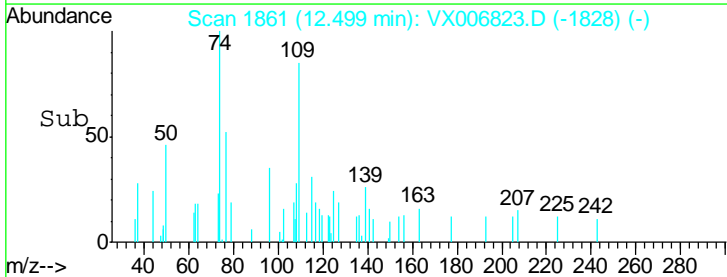
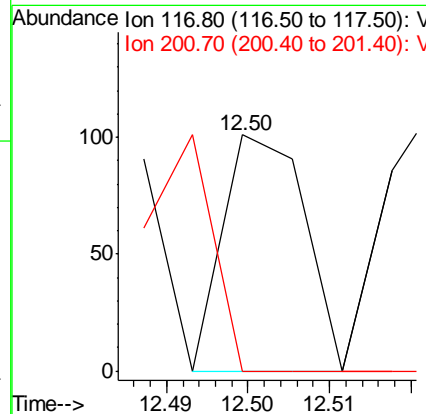
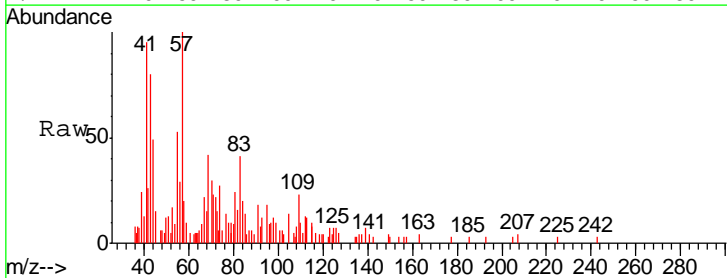
Instrument :
 MSVOA_X
 ClientSampled :
 COMP-4

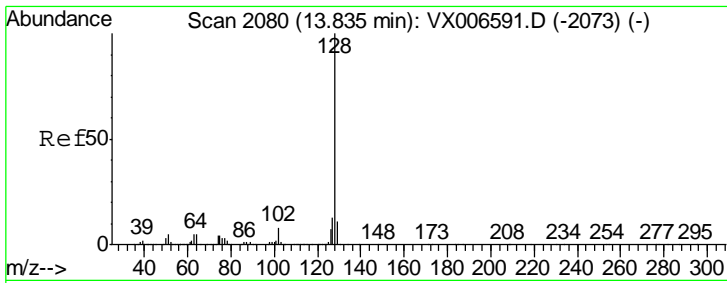
Tgt Ion:105 Resp: 42861
 Ion Ratio Lower Upper
 105 100
 134 0.0 10.7 31.9#



#90
 Hexachloroethane
 Concen: 3.307 ug/l
 RT: 12.50 min Scan# 1861
 Delta R.T. -0.10 min
 Lab File: VX006823.D
 Acq: 26 Dec 2018 17:23

Tgt Ion:117 Resp: 70
 Ion Ratio Lower Upper
 117 100
 201 84.3 42.9 128.7





#95
 Naphthalene
 Concen: 0.376 ug/l
 RT: 13.83 min Scan# 2080
 Delta R.T. -0.00 min
 Lab File: VX006823.D
 Acq: 26 Dec 2018 17:23

Instrument :
 MSVOA_X
 ClientSampled :
 COMP-4

Tgt Ion:128 Resp: 13774

Ion	Ratio	Lower	Upper
128	100		
127	17.1	10.1	15.1#
129	17.0	8.6	13.0#

