

Data Path : Z:\VOASRV\HPCHEM1\MSVOA_X\DATA\WX122619\
 Data File : VX014266.D
 Acq On : 26 Dec 2019 14:01
 Operator : JC/SP
 Sample : K6405-13
 Misc : 5.0mL/MSVOA_X/WATER
 ALS Vial : 9 Sample Multiplier: 1

Instrument :
 MSVOA_X
 ClientSampleId :
 1001-FB122019

Quant Time: Dec 27 05:59:41 2019
 Quant Method : Z:\VOASRV\HPCHEM1\MSVOA_X\METHOD\82X121319W.M
 Quant Title : SW846 8260
 QLast Update : Tue Dec 17 03:01:07 2019
 Response via : Initial Calibration

Internal Standards	R.T.	QIon	Response	Conc	Units	Dev(Min)
1) Pentafluorobenzene	5.65	168	530837	50.00	ug/l	0.00
34) 1,4-Difluorobenzene	6.85	114	813666	50.00	ug/l	0.00
63) Chlorobenzene-d5	10.11	117	729207	50.00	ug/l	0.00
72) 1,4-Dichlorobenzene-d4	12.07	152	313606	50.00	ug/l	0.00

System Monitoring Compounds

33) 1,2-Dichloroethane-d4	6.05	65	296650	49.31	ug/l	0.00
Spiked Amount	50.000		Recovery	=	98.62%	
35) Dibromofluoromethane	5.49	113	242294	48.99	ug/l	0.00
Spiked Amount	50.000		Recovery	=	97.98%	
50) Toluene-d8	8.71	98	970307	50.39	ug/l	0.00
Spiked Amount	50.000		Recovery	=	100.78%	
62) 4-Bromofluorobenzene	11.14	95	322069	45.75	ug/l	0.00
Spiked Amount	50.000		Recovery	=	91.50%	

Target Compounds

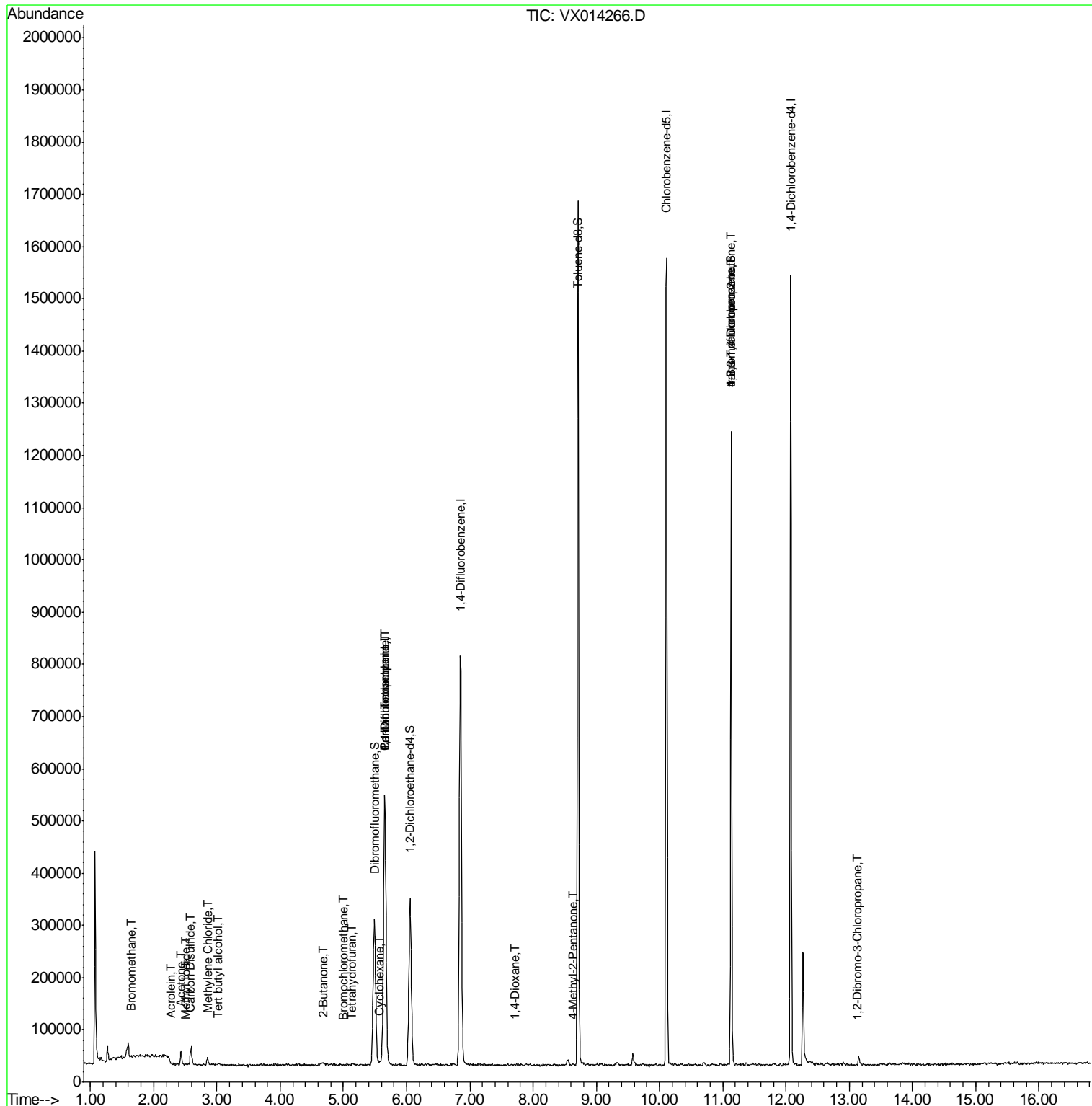
						Qvalue
5) Bromomethane	1.64	94	1230	0.258	ug/l #	66
10) Methyl Iodide	2.51	142	1301	2.807	ug/l #	83
11) Tert butyl alcohol	3.02	59	3087	2.375	ug/l #	40
13) Acrolein	2.28	56	432	0.581	ug/l #	14
16) Acetone	2.43	43	27809	7.120	ug/l	94
17) Carbon Disulfide	2.57	76	1406	0.848	ug/l #	33
20) Methylene Chloride	2.85	84	7065	1.149	ug/l #	90
25) 2-Butanone	4.68	43	3500	0.727	ug/l	94
28) Bromochloromethane	5.01	49	367	0.547	ug/l #	36
29) Tetrahydrofuran	5.13	42	1648	0.612	ug/l #	75
31) Cyclohexane	5.57	56	4276	0.476	ug/l #	74
36) 1,1-Dichloropropene	5.65	75	36132	4.840	ug/l #	49
38) Carbon Tetrachloride	5.65	117	45548	6.697	ug/l #	17
49) 1,4-Dioxane	7.73	88	347	2.552	ug/l #	1
51) 4-Methyl-2-Pentanone	8.64	43	1923	0.224	ug/l	95
76) 1,2,3-Trichloropropane	11.13	75	155836	22.889	ug/l #	39
81) trans-1,4-Dichloro-2-buten	11.13	75	155836	64.605	ug/l #	11
92) 1,2-Dibromo-3-Chloropropan	13.12	75	526	0.311	ug/l	59

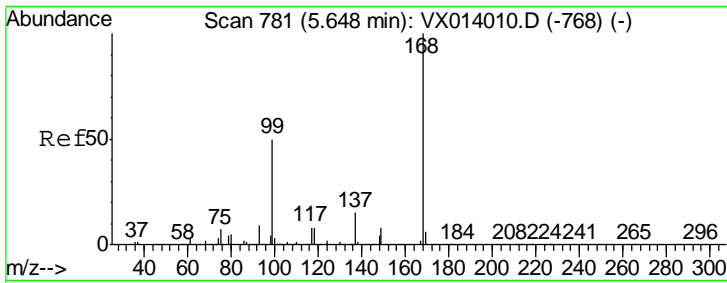
(#) = qualifier out of range (m) = manual integration (+) = signals summed

Data Path : Z:\VOASRV\HPCHEM1\MSVOA_X\DATA\VX122619\
 Data File : VX014266.D
 Acq On : 26 Dec 2019 14:01
 Operator : JC/SP
 Sample : K6405-13
 Misc : 5.0mL/MSVOA_X/WATER
 ALS Vial : 9 Sample Multiplier: 1

Instrument :
 MSVOA_X
 ClientSampled :
 1001-FB122019

Quant Time: Dec 27 05:59:41 2019
 Quant Method : Z:\VOASRV\HPCHEM1\MSVOA_X\METHOD\82X121319W.M
 Quant Title : SW846 8260
 QLast Update : Tue Dec 17 03:01:07 2019
 Response via : Initial Calibration

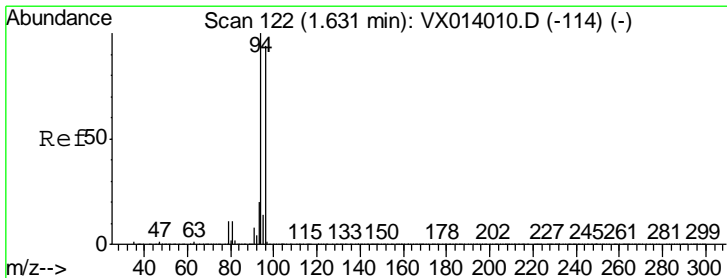
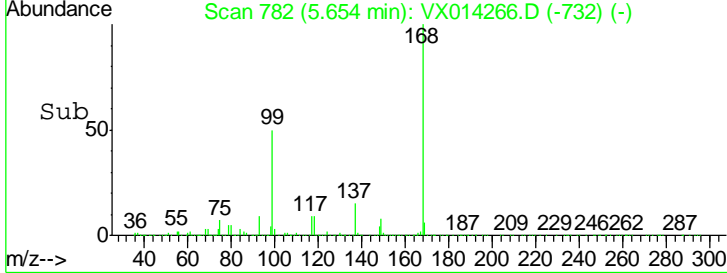
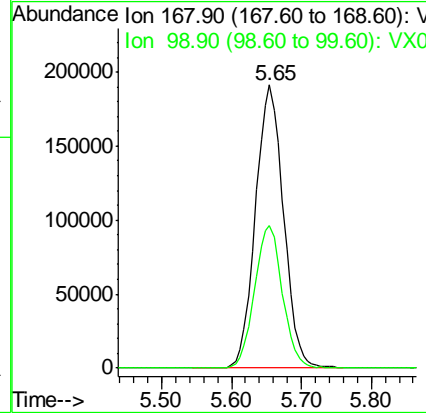
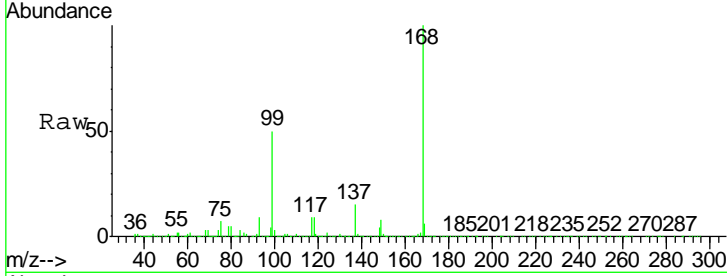




#1
 Pentafluorobenzene
 Concen: 50.000 ug/l
 RT: 5.65 min Scan# 782
 Delta R.T. 0.01 min
 Lab File: VX014266.D
 Acq: 26 Dec 2019 14:01

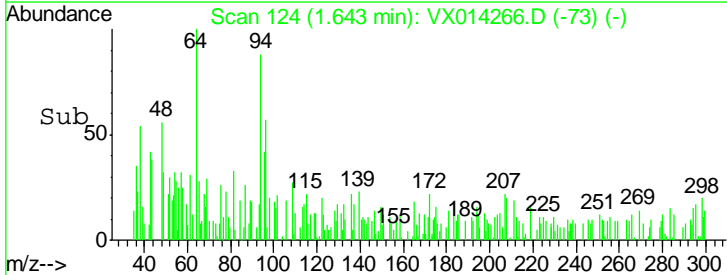
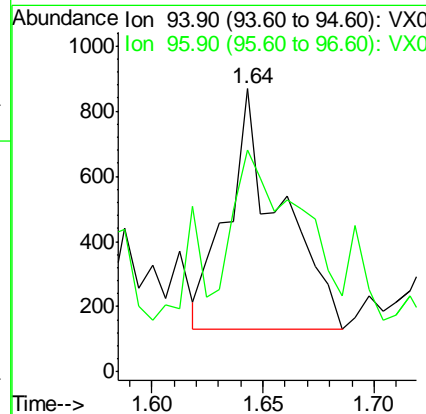
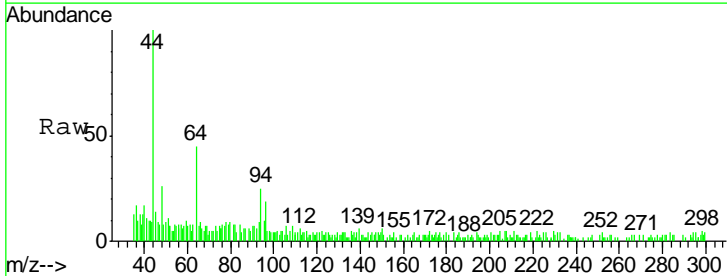
Instrument : MSVOA_X
 ClientSampled : 1001-FB122019

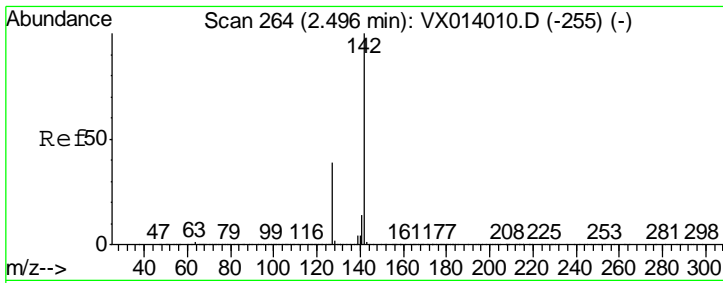
Tgt Ion	Resp	Lower	Upper
168	100		
99	50.4	40.3	60.5



#5
 Bromomethane
 Concen: 0.258 ug/l
 RT: 1.64 min Scan# 124
 Delta R.T. 0.01 min
 Lab File: VX014266.D
 Acq: 26 Dec 2019 14:01

Tgt Ion	Resp	Lower	Upper
94	100		
96	60.9	75.2	112.8#

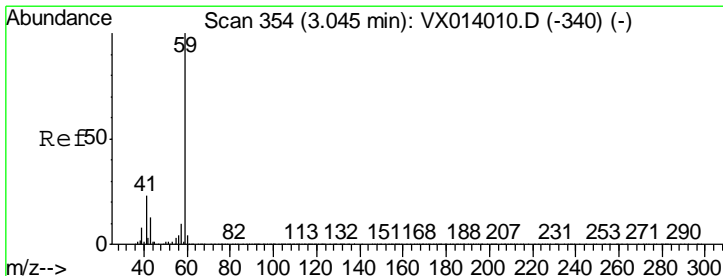
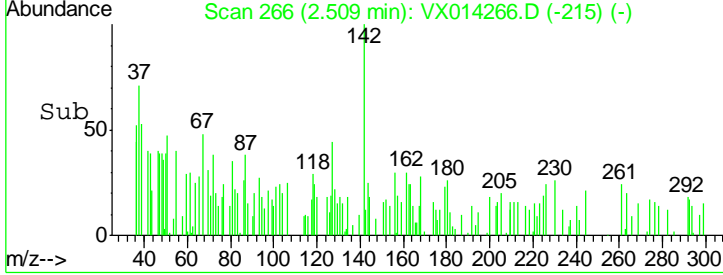
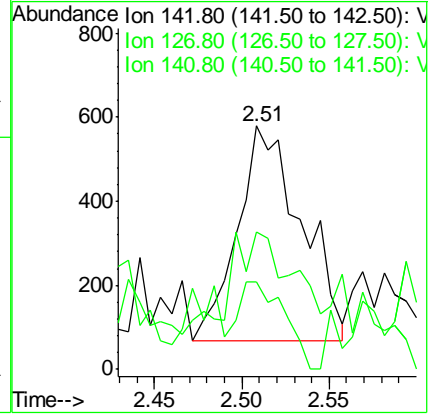
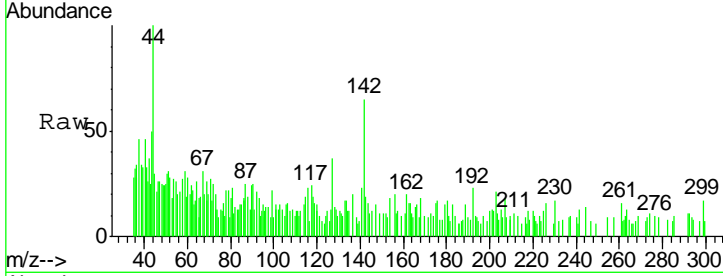




#10
 Methyl Iodide
 Concen: 2.807 ug/l
 RT: 2.51 min Scan# 266
 Delta R.T. 0.01 min
 Lab File: VX014266.D
 Acq: 26 Dec 2019 14:01

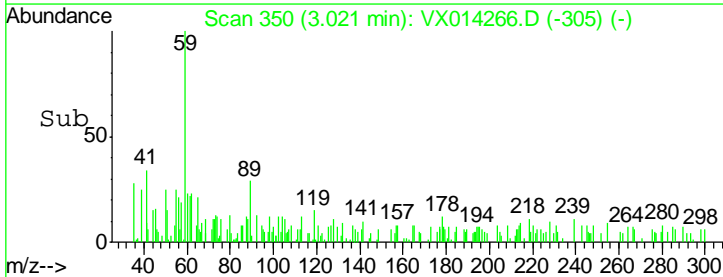
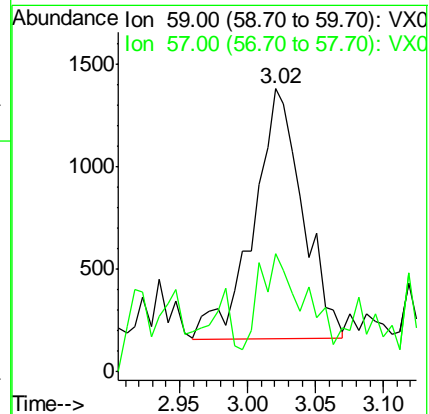
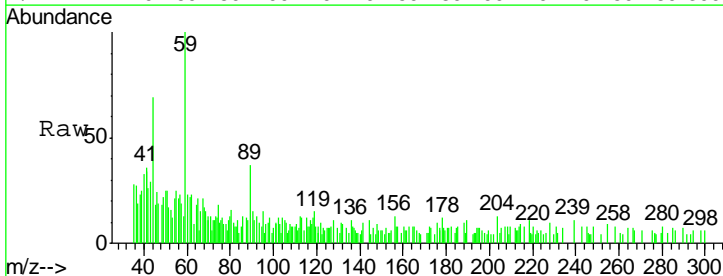
Instrument : MSVOA_X
 ClientSampled : 1001-FB122019

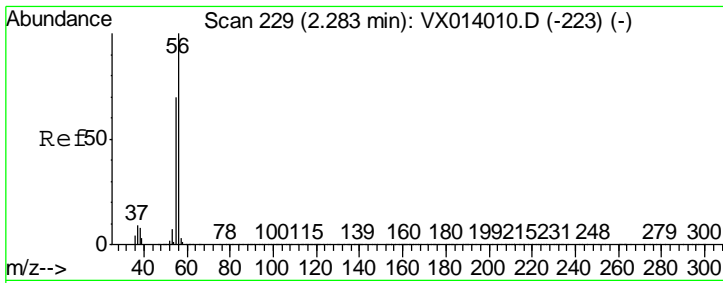
Tgt Ion	Resp	Lower	Upper
142	100		
127	45.3	31.6	47.4
141	29.5	11.6	17.4#



#11
 Tert butyl alcohol
 Concen: 2.375 ug/l
 RT: 3.02 min Scan# 350
 Delta R.T. -0.02 min
 Lab File: VX014266.D
 Acq: 26 Dec 2019 14:01

Tgt Ion	Resp	Lower	Upper
59	100		
57	33.0	8.4	12.6#

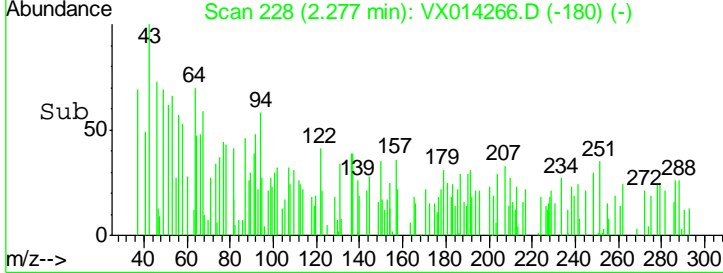
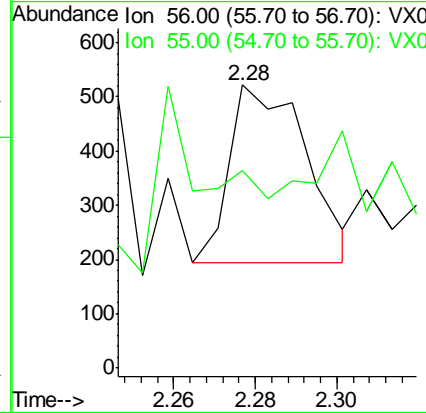
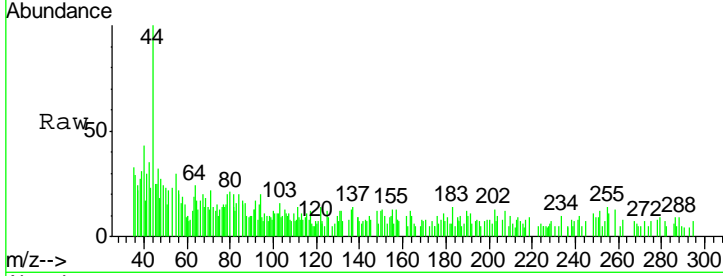




#13
 Acrolein
 Concen: 0.581 ug/l
 RT: 2.28 min Scan# 228
 Delta R.T. -0.01 min
 Lab File: VX014266.D
 Acq: 26 Dec 2019 14:01

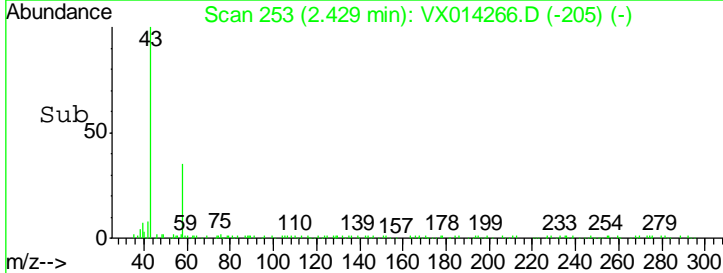
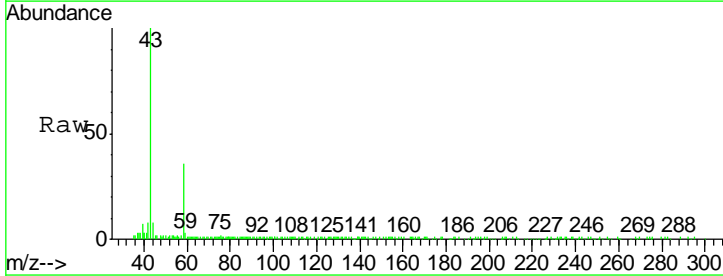
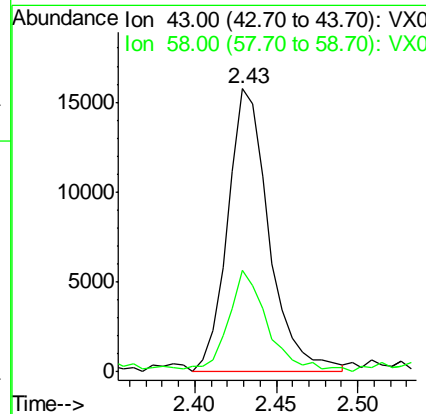
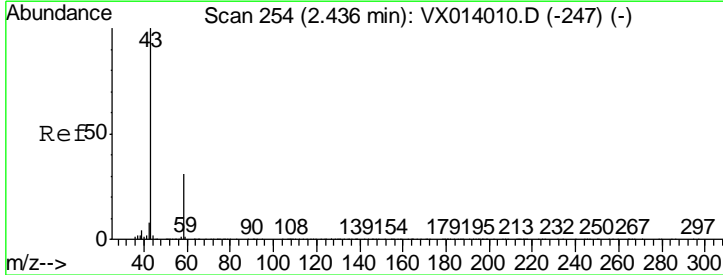
Instrument :
 MSVOA_X
 ClientSampled :
 1001-FB122019

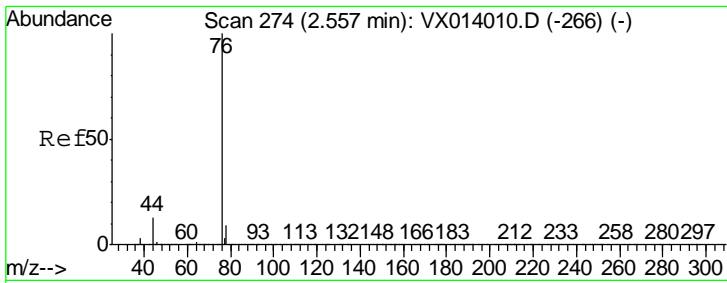
Tgt Ion: 56 Resp: 432
 Ion Ratio Lower Upper
 56 100
 55 0.0 56.9 85.3#



#16
 Acetone
 Concen: 7.120 ug/l
 RT: 2.43 min Scan# 253
 Delta R.T. -0.01 min
 Lab File: VX014266.D
 Acq: 26 Dec 2019 14:01

Tgt Ion: 43 Resp: 27809
 Ion Ratio Lower Upper
 43 100
 58 34.5 24.9 37.3

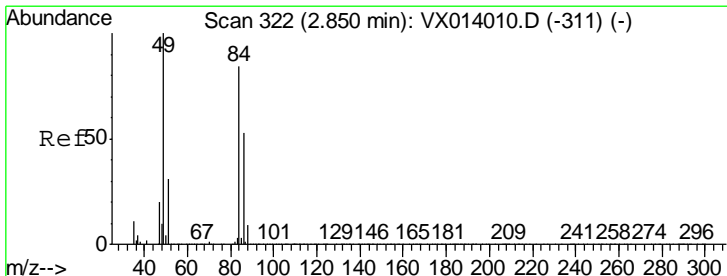
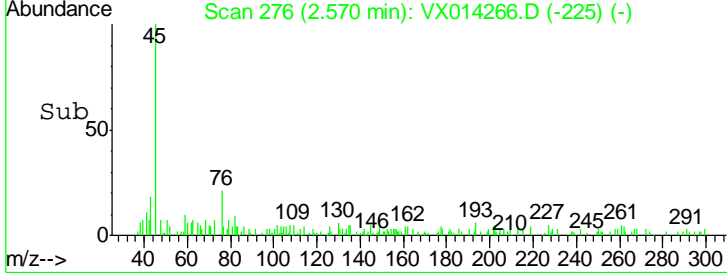
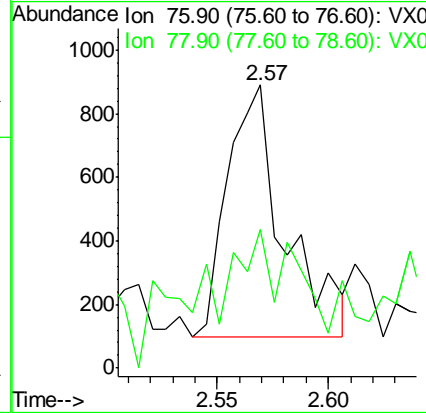
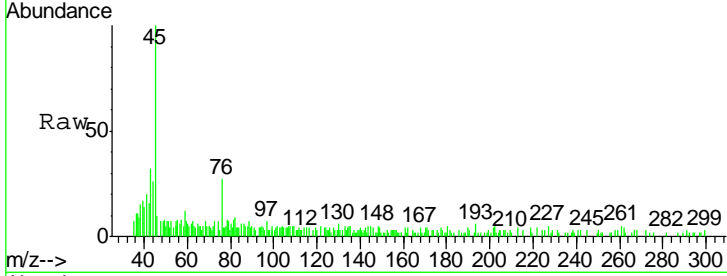




#17
 Carbon Disulfide
 Concen: 0.848 ug/l
 RT: 2.57 min Scan# 276
 Delta R.T. 0.01 min
 Lab File: VX014266.D
 Acq: 26 Dec 2019 14:01

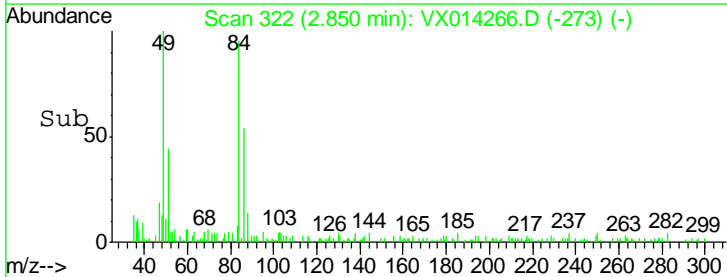
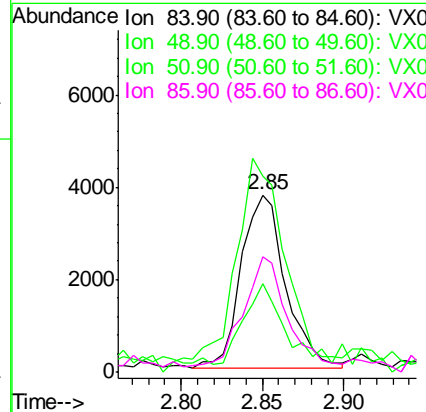
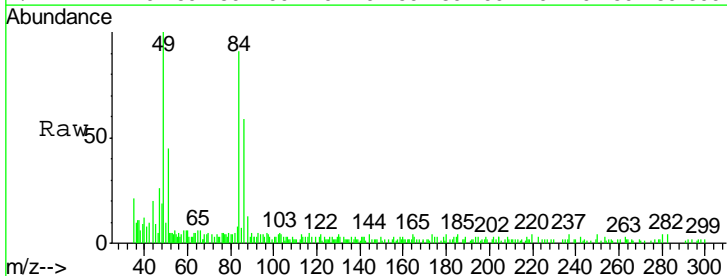
Instrument :
 MSVOA_X
 ClientSampled :
 1001-FB122019

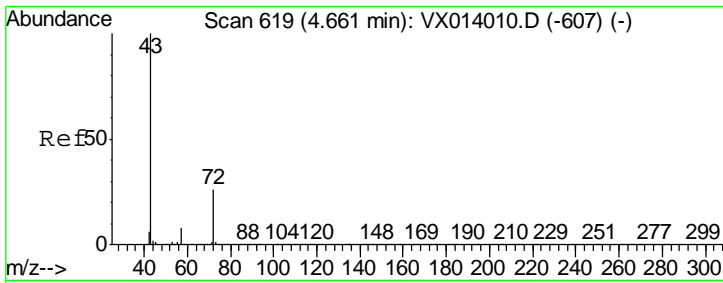
Tgt Ion: 76 Resp: 1406
 Ion Ratio Lower Upper
 76 100
 78 33.3 7.2 10.8#



#20
 Methylene Chloride
 Concen: 1.149 ug/l
 RT: 2.85 min Scan# 322
 Delta R.T. -0.00 min
 Lab File: VX014266.D
 Acq: 26 Dec 2019 14:01

Tgt Ion: 84 Resp: 7065
 Ion Ratio Lower Upper
 84 100
 49 105.7 95.8 143.6
 51 46.5 29.8 44.8#
 86 63.3 50.8 76.2



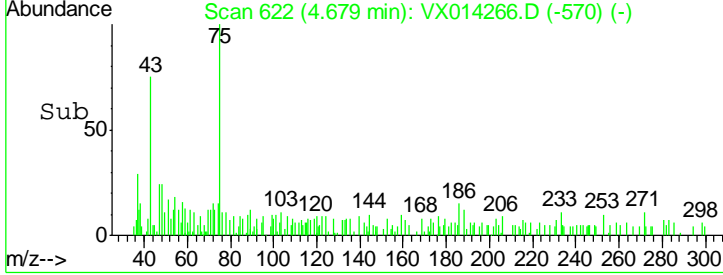
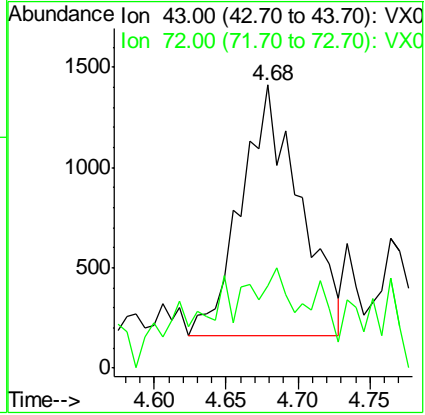
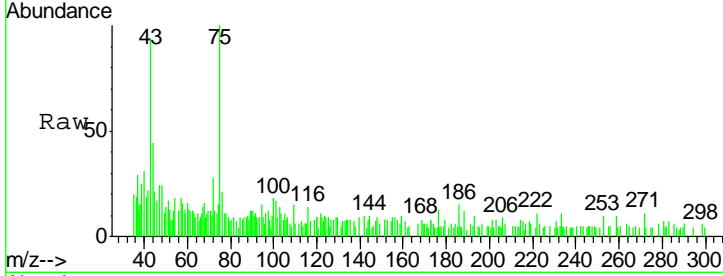


#25
 2-Butanone
 Concen: 0.727 ug/l
 RT: 4.68 min Scan# 622
 Delta R.T. 0.02 min
 Lab File: VX014266.D
 Acq: 26 Dec 2019 14:01

Instrument :
 MSVOA_X
ClientSampled :
 1001-FB122019

Tgt Ion: 43 Resp: 3500

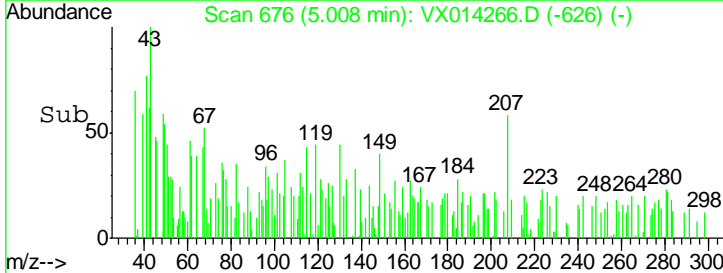
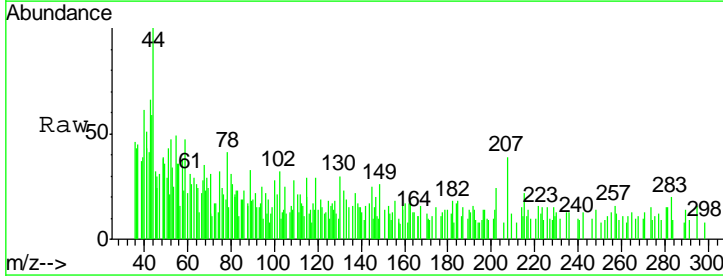
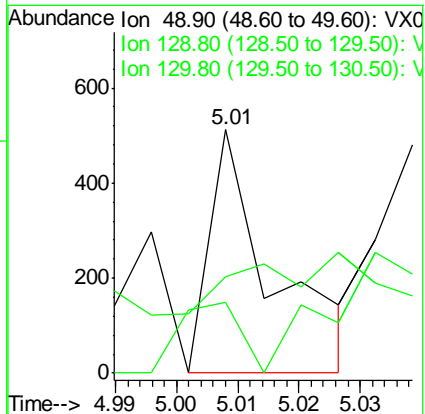
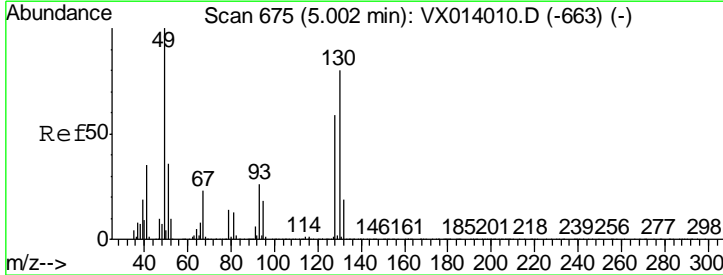
Ion	Ratio	Lower	Upper
43	100		
72	23.0	21.0	31.4

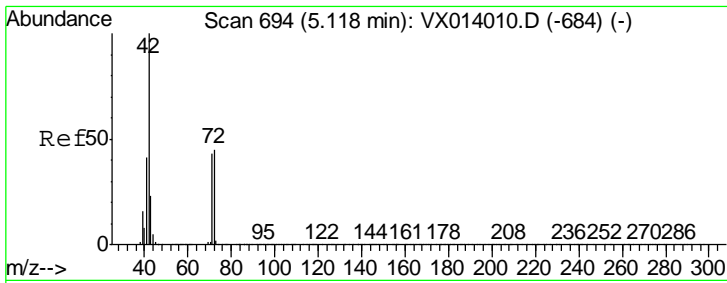


#28
 Bromochloromethane
 Concen: 0.547 ug/l
 RT: 5.01 min Scan# 676
 Delta R.T. 0.01 min
 Lab File: VX014266.D
 Acq: 26 Dec 2019 14:01

Tgt Ion: 49 Resp: 367

Ion	Ratio	Lower	Upper
49	100		
129	28.1	0.0	5.0#
130	24.5	64.6	97.0#

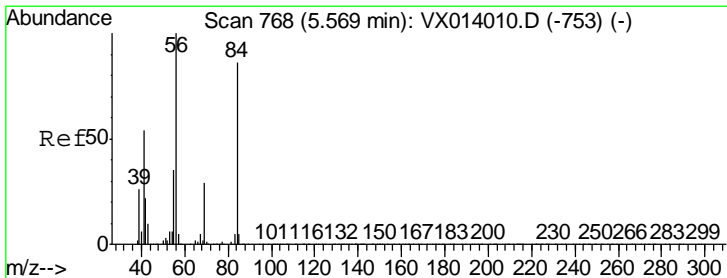
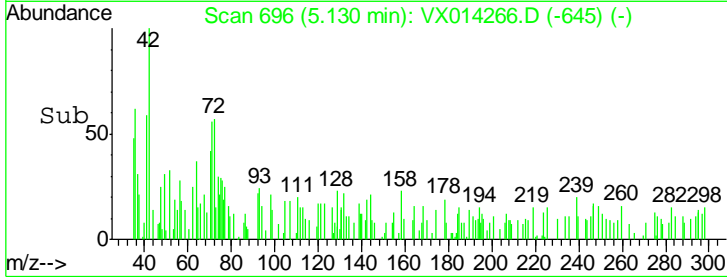
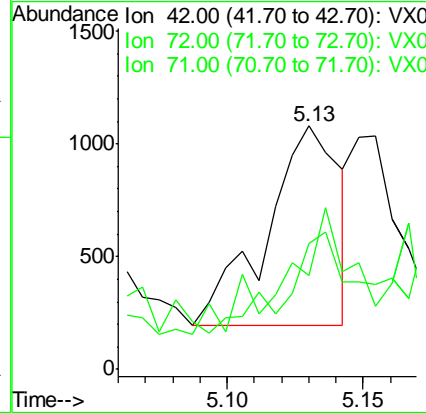
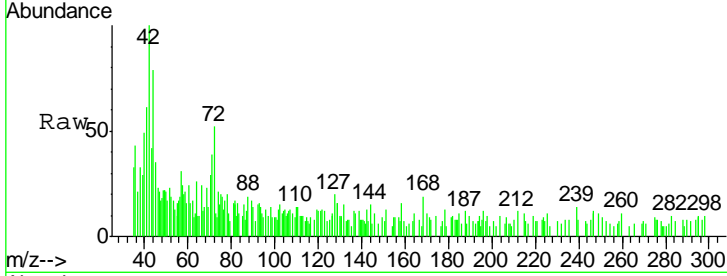




#29
 Tetrahydrofuran
 Concen: 0.612 ug/l
 RT: 5.13 min Scan# 696
 Delta R.T. 0.01 min
 Lab File: VX014266.D
 Acq: 26 Dec 2019 14:01

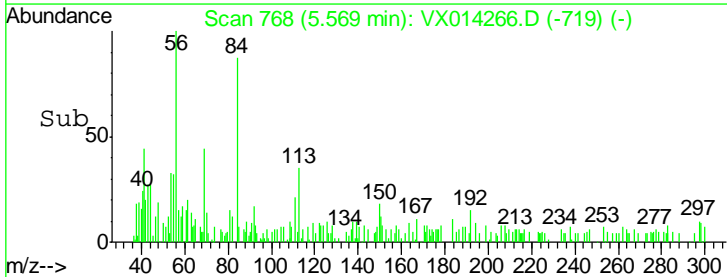
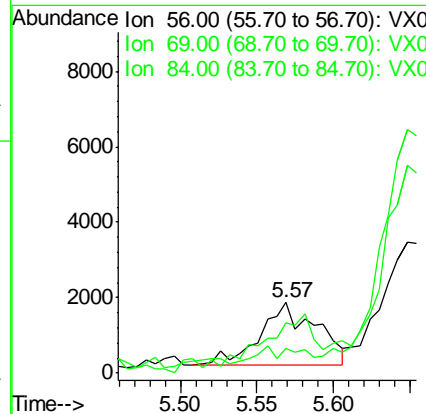
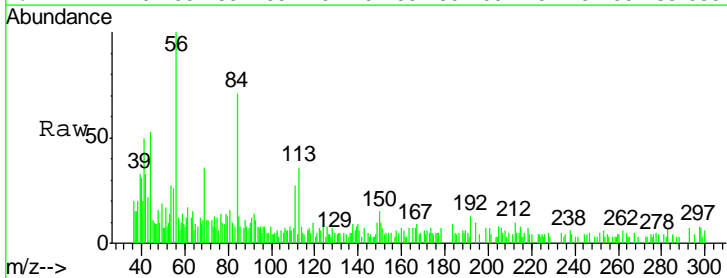
Instrument :
 MSVOA_X
 ClientSampled :
 1001-FB122019

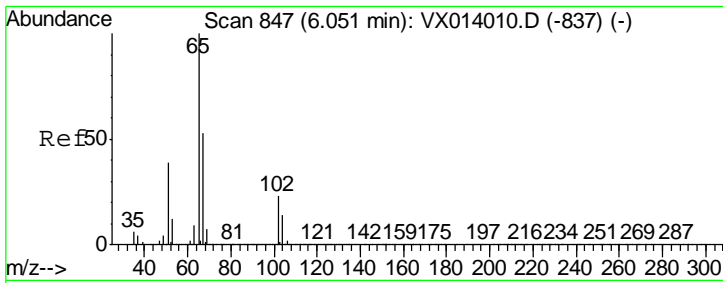
Tgt Ion	Resp	Lower	Upper
42	1648		
72	46.6	35.8	53.8
71	72.3	33.6	50.4#



#31
 Cyclohexane
 Concen: 0.476 ug/l
 RT: 5.57 min Scan# 768
 Delta R.T. -0.00 min
 Lab File: VX014266.D
 Acq: 26 Dec 2019 14:01

Tgt Ion	Resp	Lower	Upper
56	4276		
69	22.3	23.2	34.8#
84	58.3	69.2	103.8#

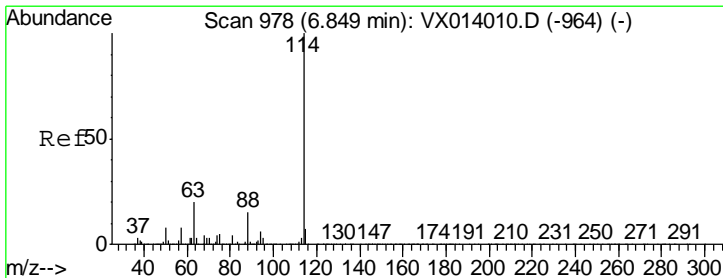
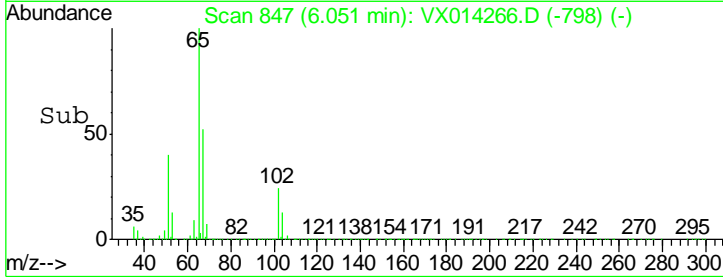
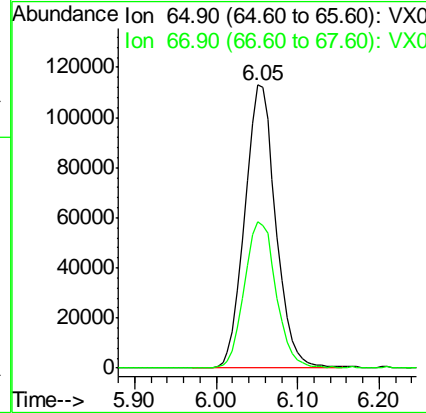
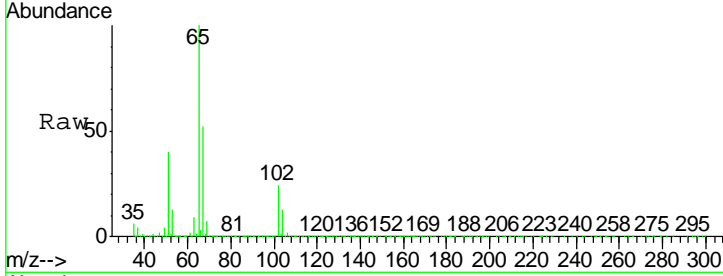




#33
 1,2-Dichloroethane-d4
 Concen: 49.308 ug/l
 RT: 6.05 min Scan# 847
 Delta R.T. -0.00 min
 Lab File: VX014266.D
 Acq: 26 Dec 2019 14:01

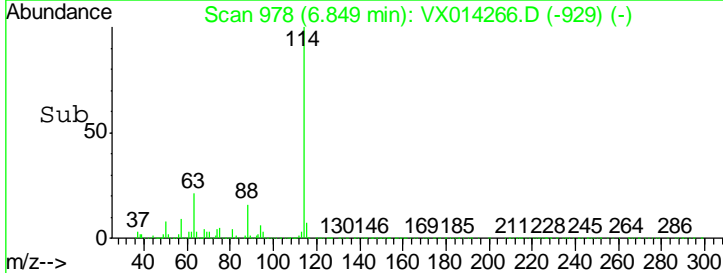
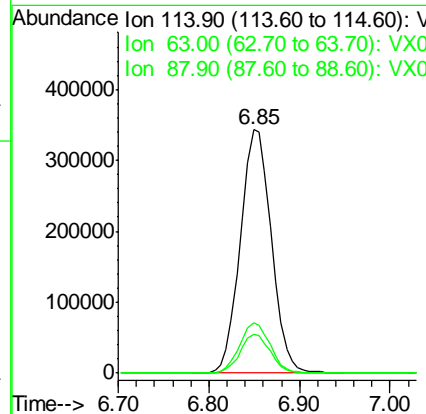
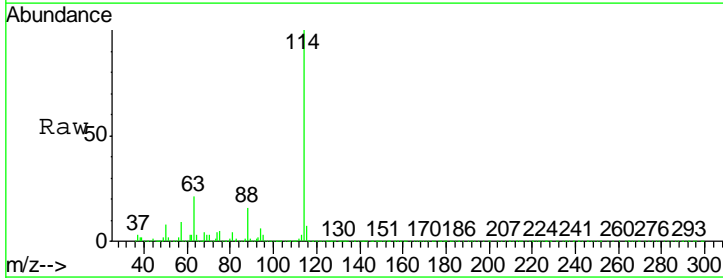
Instrument :
 MSVOA_X
 ClientSampled :
 1001-FB122019

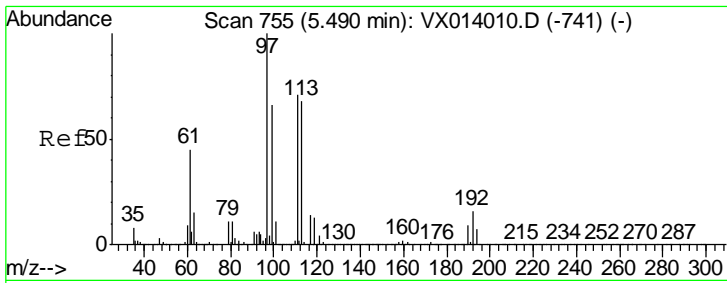
Tgt Ion: 65 Resp: 296650
 Ion Ratio Lower Upper
 65 100
 67 53.4 0.0 106.4



#34
 1,4-Difluorobenzene
 Concen: 50.000 ug/l
 RT: 6.85 min Scan# 978
 Delta R.T. -0.00 min
 Lab File: VX014266.D
 Acq: 26 Dec 2019 14:01

Tgt Ion: 114 Resp: 813666
 Ion Ratio Lower Upper
 114 100
 63 20.8 0.0 40.8
 88 15.7 0.0 30.4

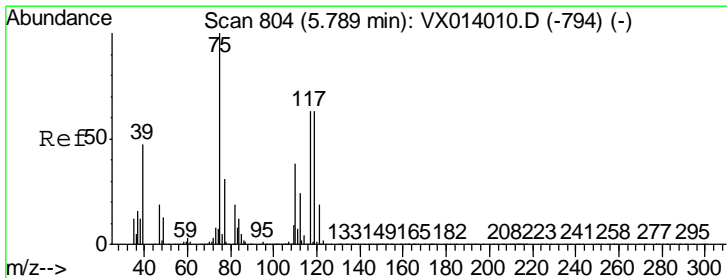
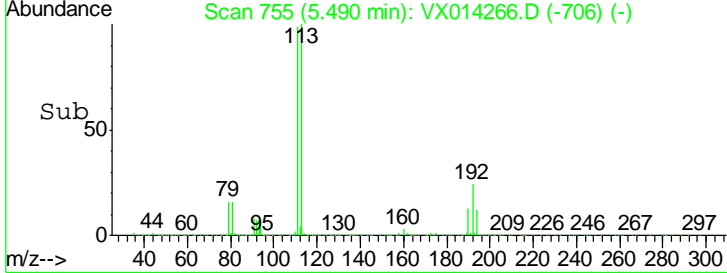
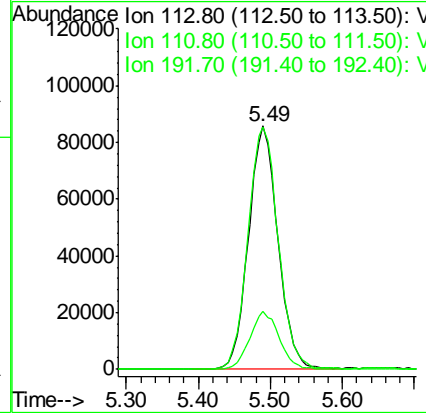
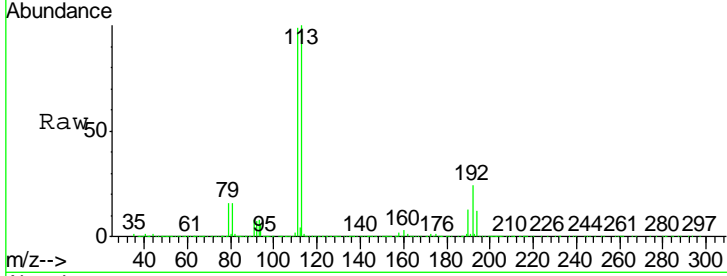




#35
 Dibromofluoromethane
 Concen: 48.986 ug/l
 RT: 5.49 min Scan# 755
 Delta R.T. -0.00 min
 Lab File: VX014266.D
 Acq: 26 Dec 2019 14:01

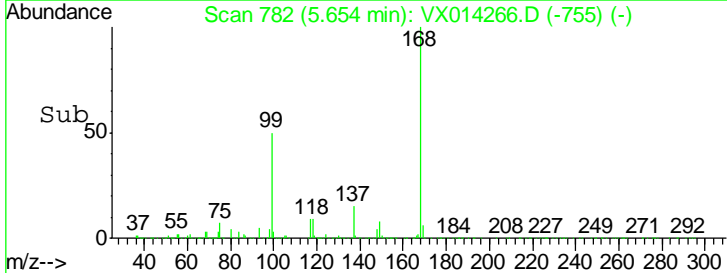
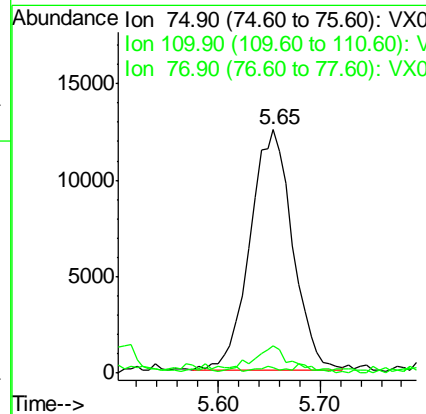
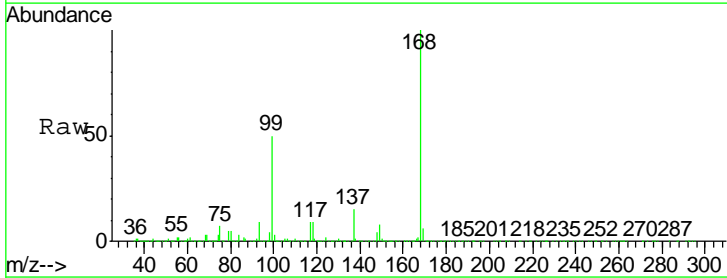
Instrument :
 MSVOA_X
 ClientSampleId :
 1001-FB122019

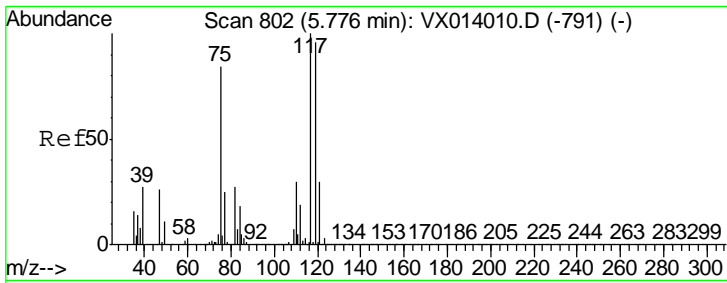
Tgt Ion	Resp	Lower	Upper
113	242294		
111	102.1	82.0	123.0
192	23.8	19.3	28.9



#36
 1,1-Dichloropropene
 Concen: 4.840 ug/l
 RT: 5.65 min Scan# 782
 Delta R.T. -0.13 min
 Lab File: VX014266.D
 Acq: 26 Dec 2019 14:01

Tgt Ion	Resp	Lower	Upper
75	36132		
75	100		
110	8.4	18.3	54.9#
77	0.5	24.8	37.2#

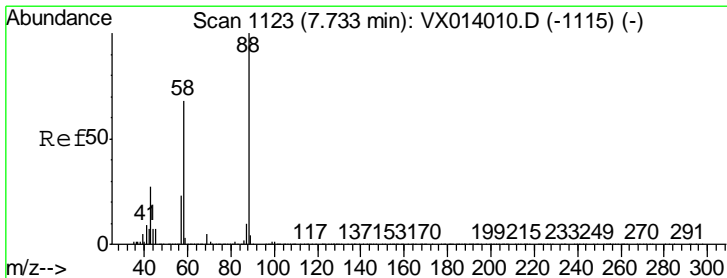
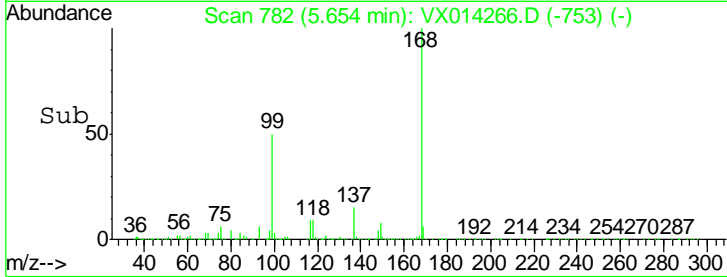
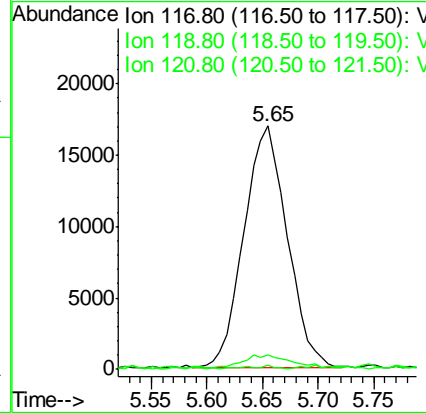
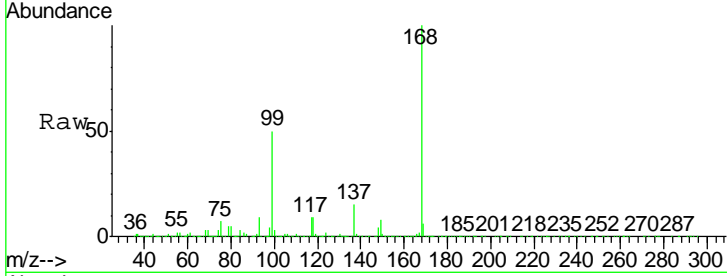




#38
 Carbon Tetrachloride
 Concen: 6.697 ug/l
 RT: 5.65 min Scan# 782
 Delta R.T. -0.12 min
 Lab File: VX014266.D
 Acq: 26 Dec 2019 14:01

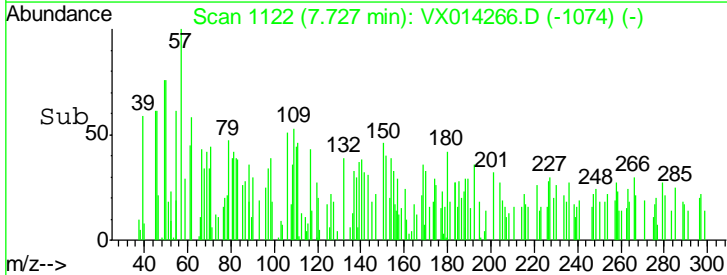
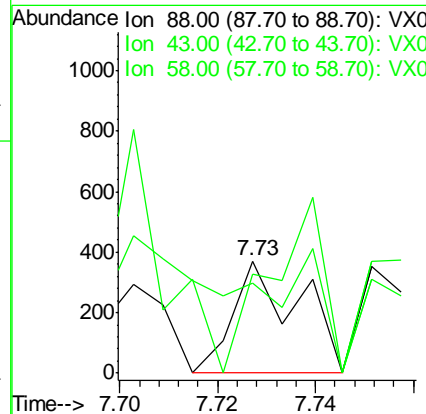
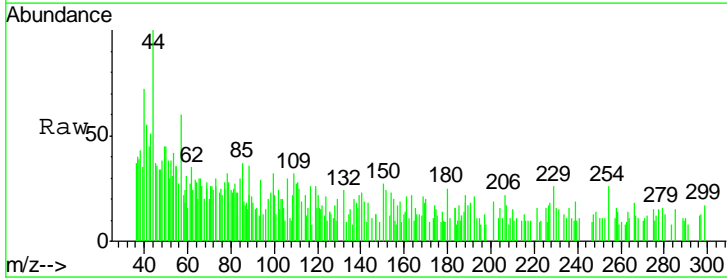
Instrument :
 MSVOA_X
 ClientSampled :
 1001-FB122019

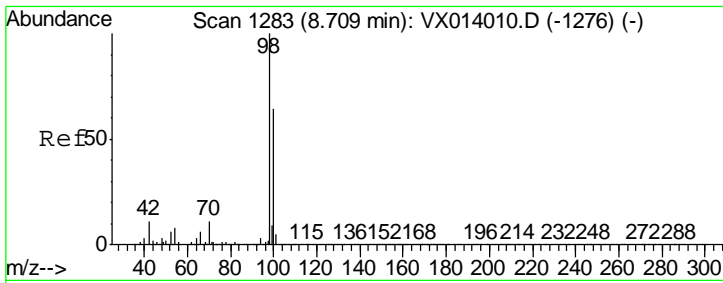
Tgt Ion	Resp	Lower	Upper
117	45548		
119	5.1	76.2	114.4#
121	0.8	23.6	35.4#



#49
 1,4-Dioxane
 Concen: 2.552 ug/l
 RT: 7.73 min Scan# 1122
 Delta R.T. -0.01 min
 Lab File: VX014266.D
 Acq: 26 Dec 2019 14:01

Tgt Ion	Resp	Lower	Upper
88	347		
43	128.0	26.5	39.7#
58	0.0	56.8	85.2#

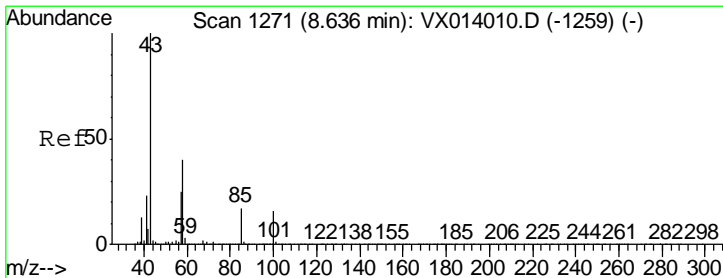
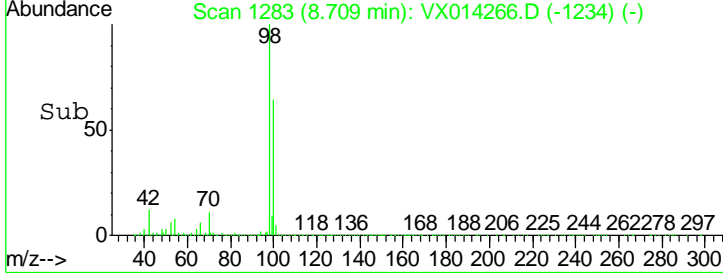
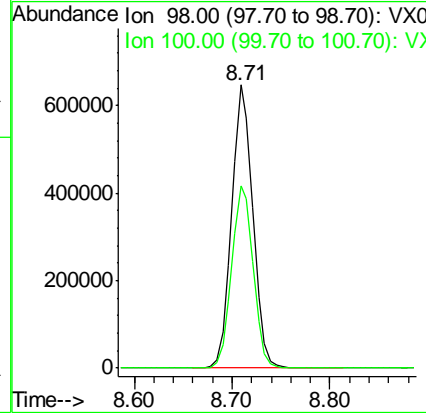
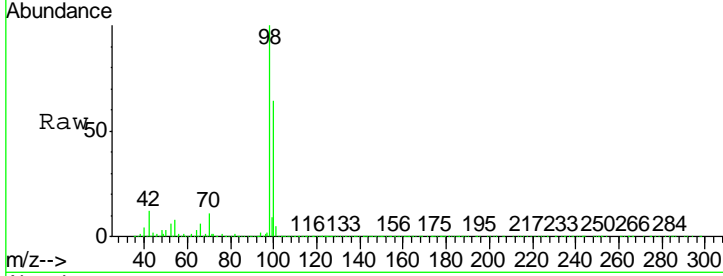




#50
 Toluene-d8
 Concen: 50.388 ug/l
 RT: 8.71 min Scan# 1283
 Delta R.T. -0.00 min
 Lab File: VX014266.D
 Acq: 26 Dec 2019 14:01

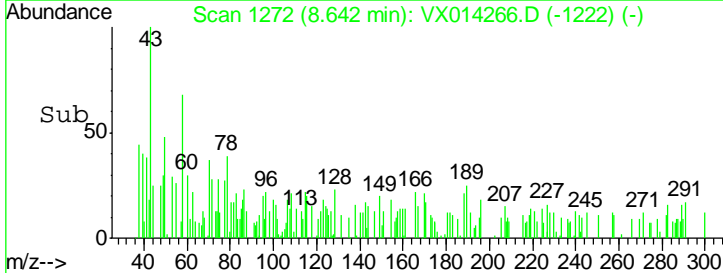
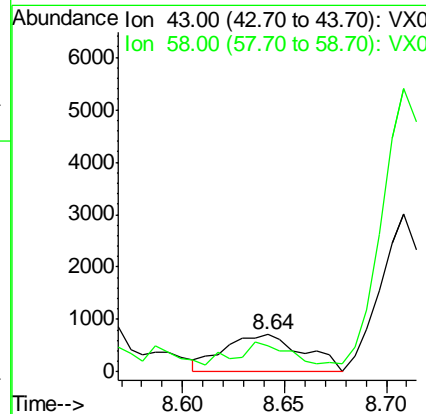
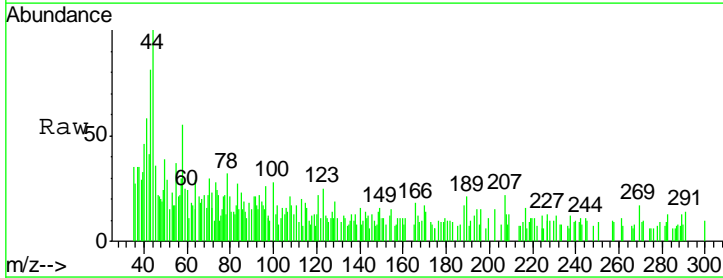
Instrument : MSVOA_X
 ClientSampled : 1001-FB122019

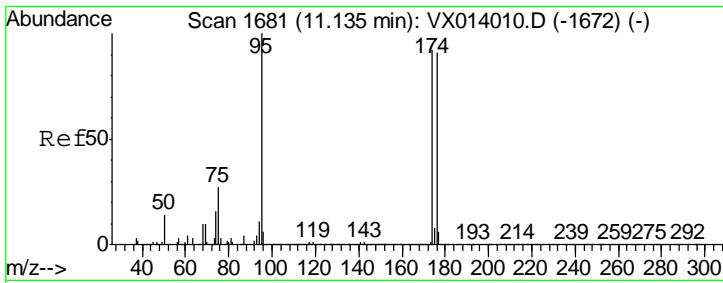
Tgt Ion: 98 Resp: 970307
 Ion Ratio Lower Upper
 98 100
 100 65.5 52.9 79.3



#51
 4-Methyl-2-Pentanone
 Concen: 0.224 ug/l
 RT: 8.64 min Scan# 1272
 Delta R.T. 0.01 min
 Lab File: VX014266.D
 Acq: 26 Dec 2019 14:01

Tgt Ion: 43 Resp: 1923
 Ion Ratio Lower Upper
 43 100
 58 37.3 32.2 48.2

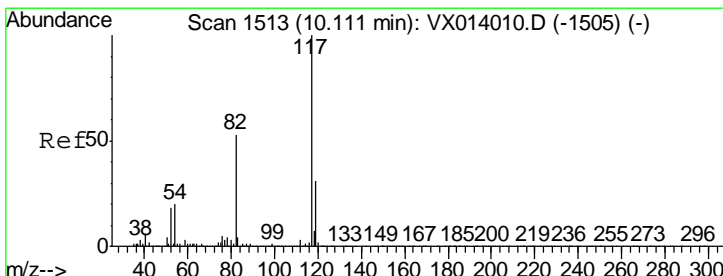
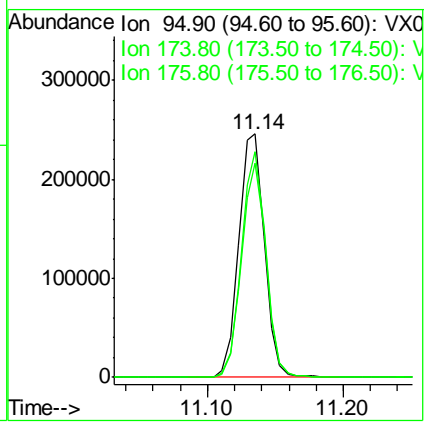
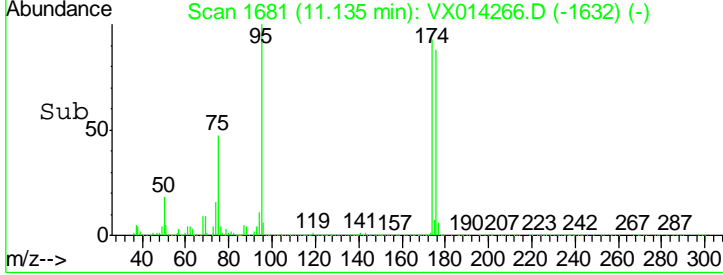
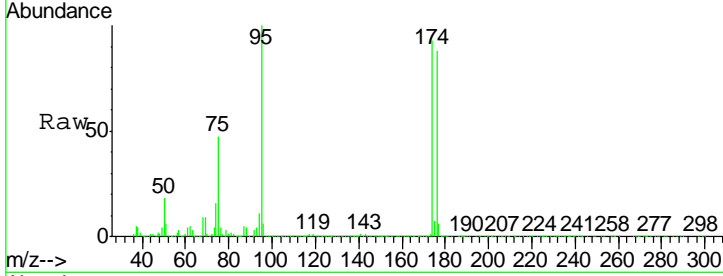




#62
 4-Bromofluorobenzene
 Concen: 45.754 ug/l
 RT: 11.14 min Scan# 1681
 Delta R.T. -0.00 min
 Lab File: VX014266.D
 Acq: 26 Dec 2019 14:01

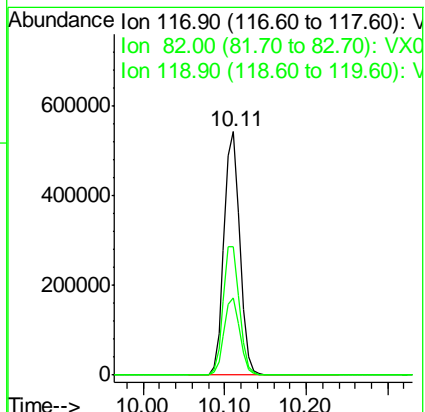
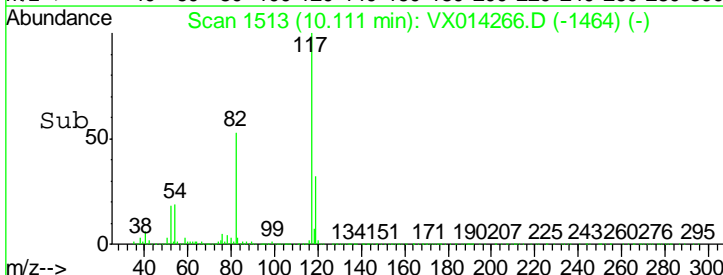
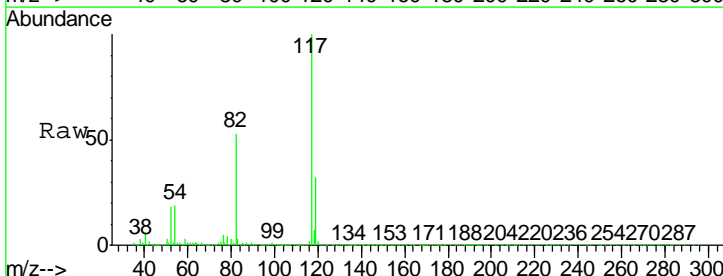
Instrument : MSVOA_X
 ClientSampled : 1001-FB122019

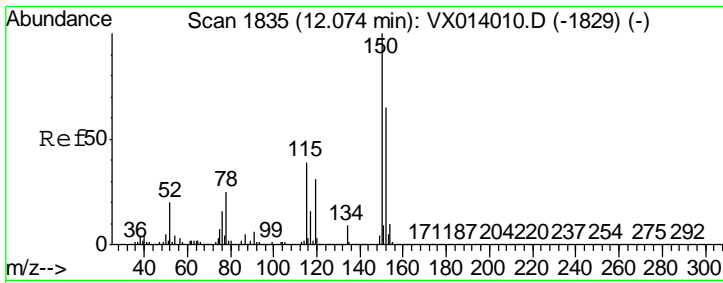
Tgt Ion	Resp	Lower	Upper
95	322069		
174	88.9	0.0	175.8
176	84.5	0.0	173.0



#63
 Chlorobenzene-d5
 Concen: 50.000 ug/l
 RT: 10.11 min Scan# 1513
 Delta R.T. -0.00 min
 Lab File: VX014266.D
 Acq: 26 Dec 2019 14:01

Tgt Ion	Resp	Lower	Upper
117	729207		
82	52.9	42.2	63.4
119	31.8	25.1	37.7

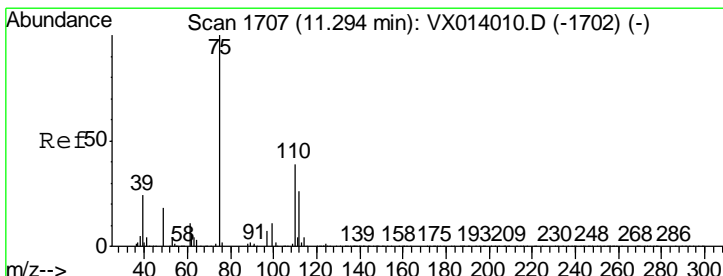
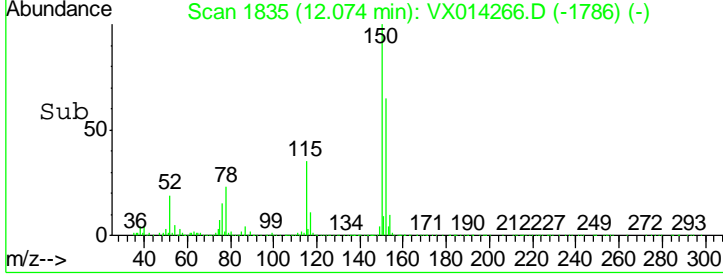
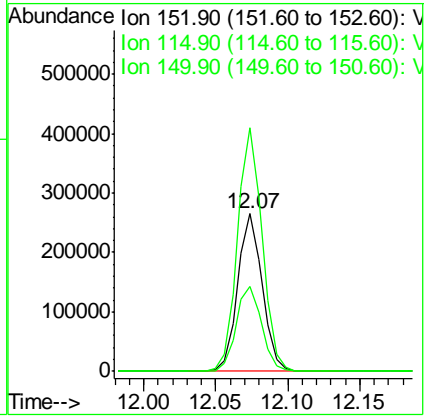
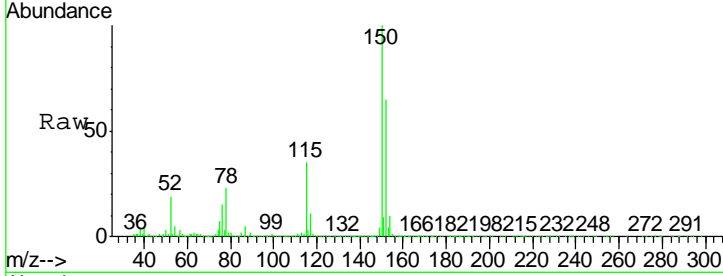




#72
 1,4-Dichlorobenzene-d4
 Concen: 50.000 ug/l
 RT: 12.07 min Scan# 1835
 Delta R.T. -0.00 min
 Lab File: VX014266.D
 Acq: 26 Dec 2019 14:01

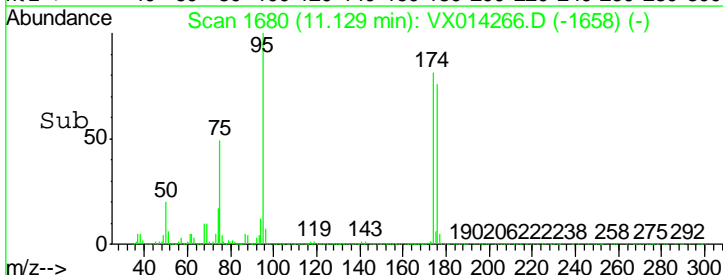
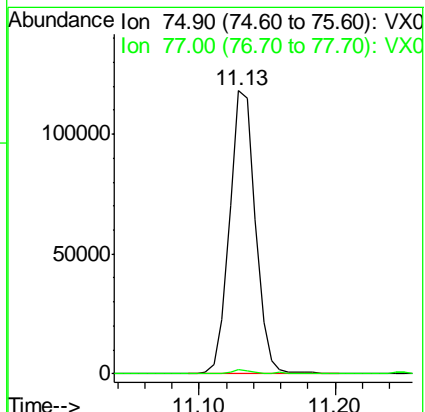
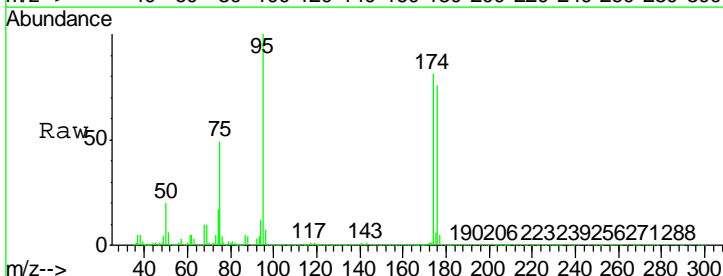
Instrument : MSVOA_X
 Client Sampled : 1001-FB122019

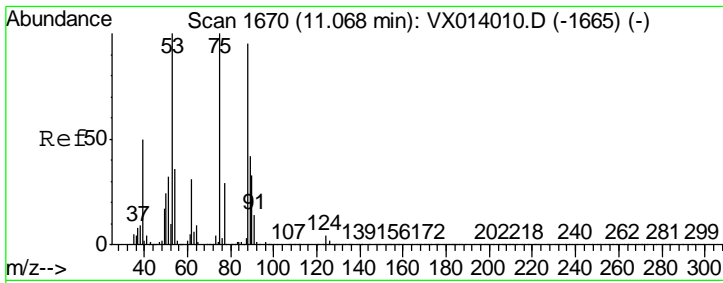
Tgt Ion	Resp	Lower	Upper
152	100		
115	56.0	38.3	114.9
150	155.7	0.0	345.4



#76
 1,2,3-Trichloropropane
 Concen: 22.889 ug/l
 RT: 11.13 min Scan# 1680
 Delta R.T. -0.16 min
 Lab File: VX014266.D
 Acq: 26 Dec 2019 14:01

Tgt Ion	Resp	Lower	Upper
75	100		
77	1.4	19.3	57.8#

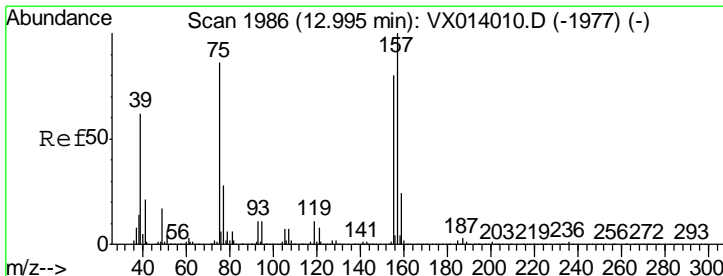
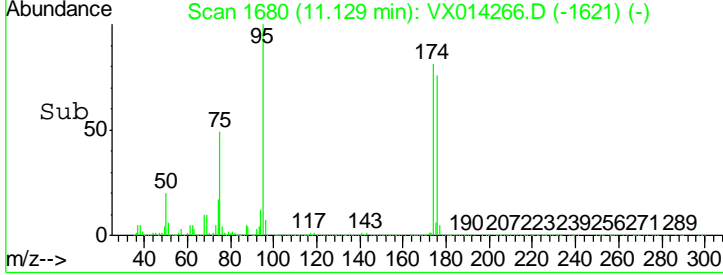
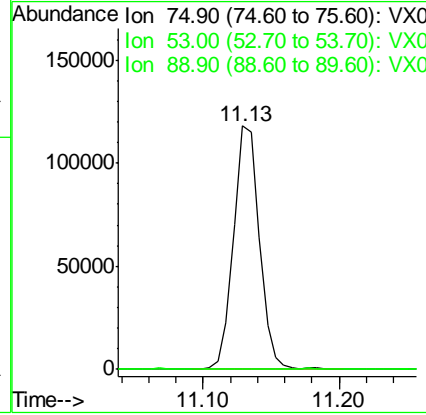
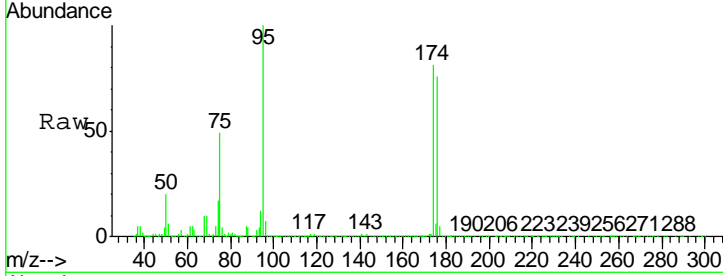




#81
 trans-1,4-Dichloro-2-butene
 Concen: 64.605 ug/l
 RT: 11.13 min Scan# 1680
 Delta R.T. 0.06 min
 Lab File: VX014266.D
 Acq: 26 Dec 2019 14:01

Instrument :
 MSVOA_X
 ClientSampled :
 1001-FB122019

Tgt Ion	Resp	Lower	Upper
75	100		
53	0.1	76.7	115.1#
89	0.0	34.6	51.8#



#92
 1,2-Dibromo-3-Chloropropane
 Concen: 0.311 ug/l
 RT: 13.12 min Scan# 2006
 Delta R.T. 0.12 min
 Lab File: VX014266.D
 Acq: 26 Dec 2019 14:01

Tgt Ion	Resp	Lower	Upper
75	100		
155	63.1	46.9	140.6
157	67.3	60.8	182.4

