

Data Path : Z:\VOASRV\HPCHEM1\MSVOA X\DATA\VX122619\  
 Data File : VX014271.D  
 Acq On : 26 Dec 2019 15:58  
 Operator : JC/SP  
 Sample : K6405-02  
 Misc : 5.0mL/MSVOA X/WATER  
 ALS Vial : 14 Sample Multiplier: 1

Instrument :  
 MSVOA\_X  
 ClientSampleId :  
 992-MW-02-(23.8)

Integration Parameters: RTEINT.P

Integrator: RTE  
 Smoothing : ON Filtering: 5  
 Sampling : 1 Min Area: 3 % of largest Peak  
 Start Thrs: 0.2 Max Peaks: 100  
 Stop Thrs : 0 Peak Location: TOP

If leading or trailing edge < 100 prefer < Baseline drop else tangent >  
 Peak separation: 5

Method : Z:\VOASRV\HPCHEM1\MSVOA\_X\METHOD\82X121319W.M  
 Title : SW846 8260

Signal : TIC

| peak # | R.T. min | first scan | max scan | last scan | PK TY | peak height | corr. area | corr. % max. | % of total |
|--------|----------|------------|----------|-----------|-------|-------------|------------|--------------|------------|
| 1      | 1.070    | 26         | 30       | 41        | rBV   | 938895      | 1159535    | 42.13%       | 5.875%     |
| 2      | 1.296    | 64         | 67       | 73        | rVB   | 156057      | 156002     | 5.67%        | 0.790%     |
| 3      | 1.399    | 81         | 84       | 90        | rVB   | 46695       | 43521      | 1.58%        | 0.221%     |
| 4      | 1.600    | 109        | 117      | 120       | rVB10 | 31263       | 67898      | 2.47%        | 0.344%     |
| 5      | 2.588    | 271        | 279      | 286       | rBV   | 60251       | 114732     | 4.17%        | 0.581%     |
| 6      | 3.155    | 368        | 372      | 379       | rVB2  | 17061       | 34218      | 1.24%        | 0.173%     |
| 7      | 4.588    | 596        | 607      | 617       | rBV   | 361211      | 975928     | 35.46%       | 4.945%     |
| 8      | 5.490    | 744        | 755      | 769       | rBV   | 279566      | 786350     | 28.57%       | 3.984%     |
| 9      | 5.655    | 770        | 782      | 796       | rVB   | 514396      | 1447200    | 52.59%       | 7.333%     |
| 10     | 6.057    | 837        | 848      | 860       | rBV   | 326664      | 866022     | 31.47%       | 4.388%     |
| 11     | 6.849    | 967        | 978      | 991       | rBV   | 790332      | 1874017    | 68.09%       | 9.495%     |
| 12     | 7.209    | 1027       | 1037     | 1050      | rBV   | 562403      | 1198649    | 43.55%       | 6.073%     |
| 13     | 8.709    | 1276       | 1283     | 1293      | rBV   | 1674406     | 2573034    | 93.49%       | 13.037%    |
| 14     | 9.331    | 1378       | 1385     | 1393      | rBV   | 1878861     | 2752110    | 100.00%      | 13.945%    |
| 15     | 10.105   | 1506       | 1512     | 1523      | rBV   | 1568666     | 2171115    | 78.89%       | 11.001%    |
| 16     | 11.135   | 1675       | 1681     | 1691      | rBV   | 1214105     | 1615438    | 58.70%       | 8.185%     |
| 17     | 12.074   | 1829       | 1835     | 1841      | rBV   | 1561019     | 1900134    | 69.04%       | 9.628%     |

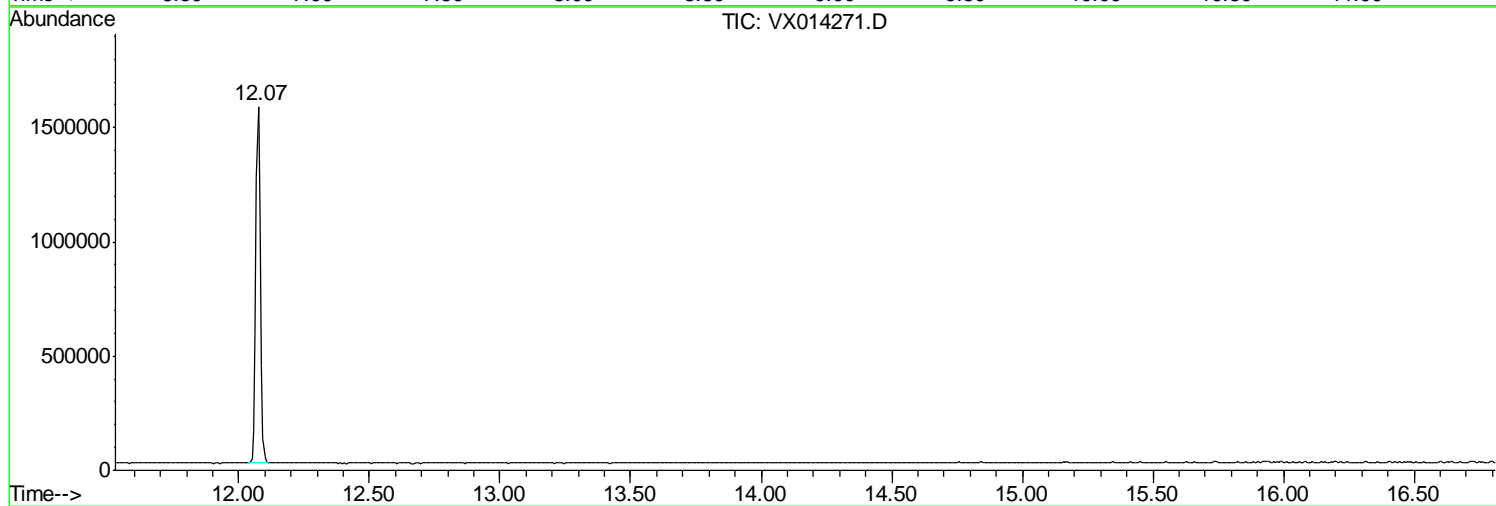
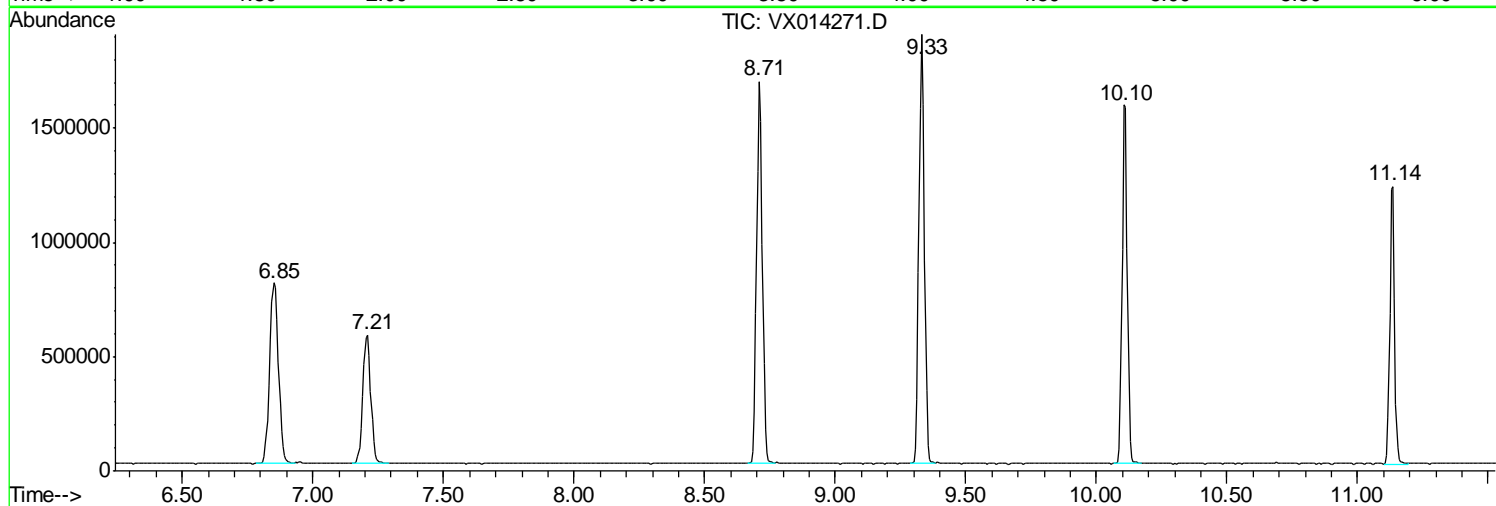
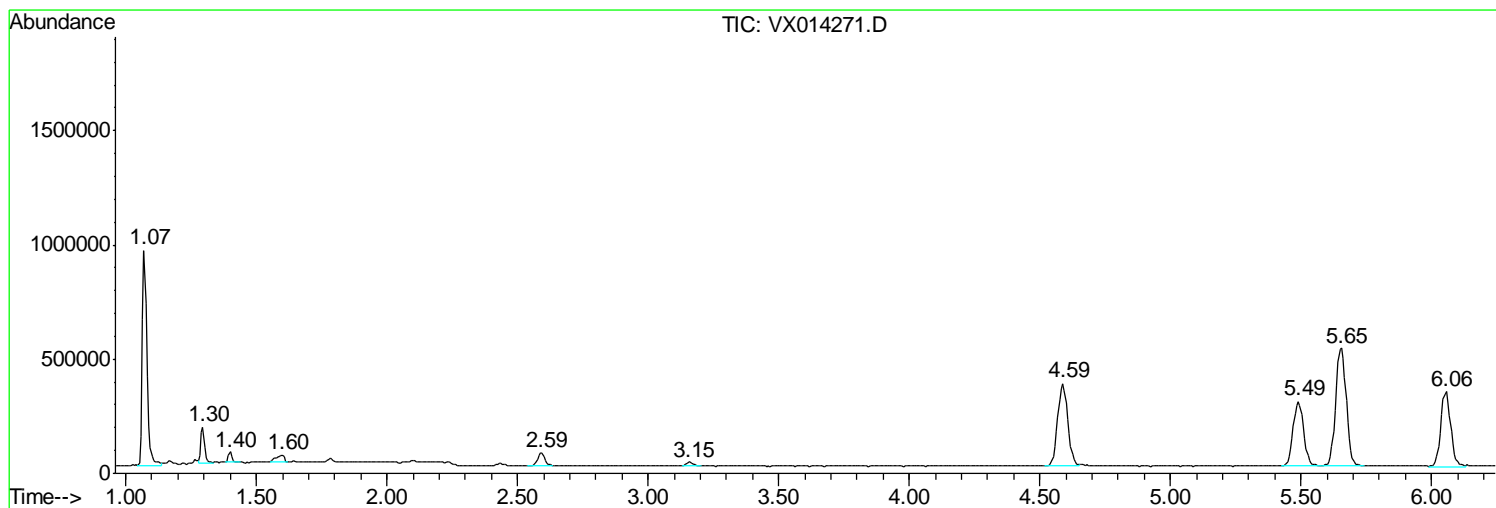
Sum of corrected areas: 19735903

Data Path : Z:\VOASRV\HPCHEM1\MSVOA X\DATA\VX122619\  
Data File : VX014271.D  
Acq On : 26 Dec 2019 15:58  
Operator : JC/SP  
Sample : K6405-02  
Misc : 5.0mL/MSVOA X/WATER  
ALS Vial : 14 Sample Multiplier: 1

Instrument :  
MSVOA\_X  
ClientSampled :  
992-MW-02-(23.8)

Quant Method : Z:\VOASRV\HPCHEM1\MSVOA\_X\METHOD\82X121319W.M  
Quant Title : SW846 8260

TIC Library : C:\DATABASE\NIST11.L  
TIC Integration Parameters: LSCINT.P



Data Path : Z:\VOASRV\HPCHEM1\MSVOA X\DATA\VX122619\  
 Data File : VX014271.D  
 Acq On : 26 Dec 2019 15:58  
 Operator : JC/SP  
 Sample : K6405-02  
 Misc : 5.0mL/MSVOA X/WATER  
 ALS Vial : 14 Sample Multiplier: 1

Instrument :  
 MSVOA\_X  
 Client Sampled :  
 992-MW-02-(23.8)

Quant Method : Z:\VOASRV\HPCHEM1\MSVOA\_X\METHOD\82X121319W.M  
 Quant Title : SW846 8260

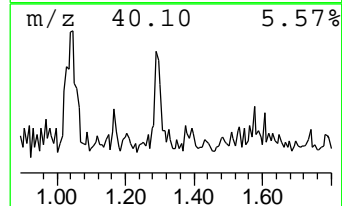
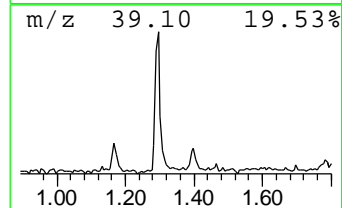
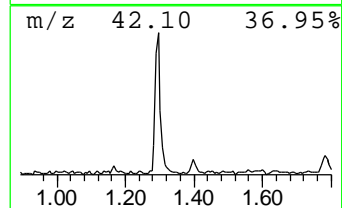
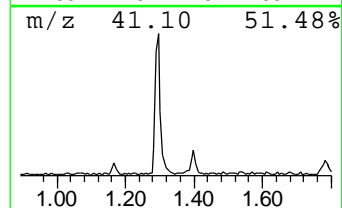
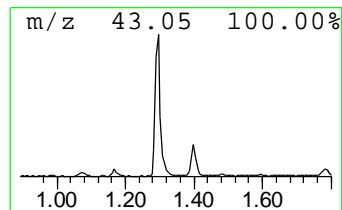
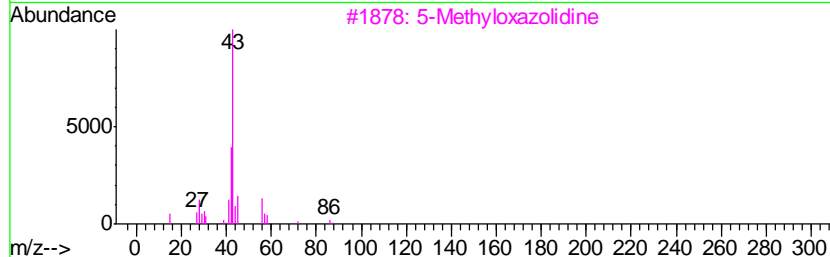
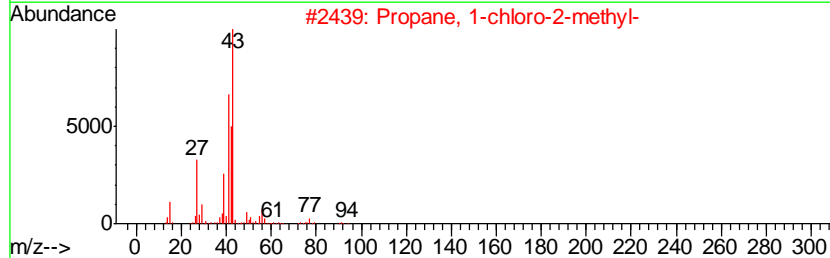
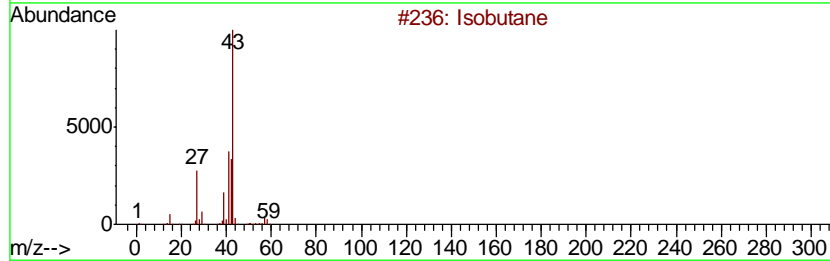
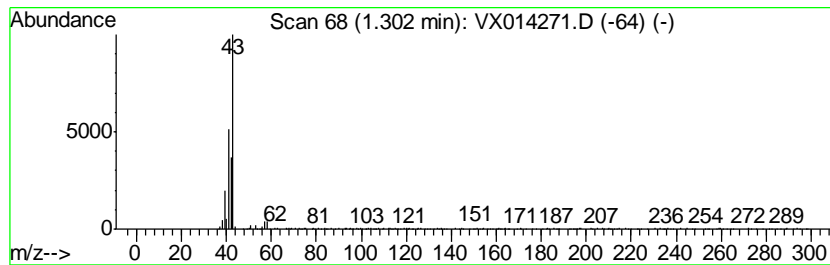
TIC Library : C:\DATABASE\NIST11.L  
 TIC Integration Parameters: LSCINT.P

\*\*\*\*\*  
 Peak Number 2 Isobutane Concentration Rank 2

| R.T. | EstConc   | Area   | Relative to ISTD   | R.T. |
|------|-----------|--------|--------------------|------|
| 1.30 | 5.39 ug/l | 156002 | Pentafluorobenzene | 5.65 |

| Hit# | of | Tentative ID                | MW  | MolForm   | CAS#        | Qual |
|------|----|-----------------------------|-----|-----------|-------------|------|
| 1    | 5  | Isobutane                   | 58  | C4H10     | 000075-28-5 | 80   |
| 2    |    | Propane, 1-chloro-2-methyl- | 92  | C4H9Cl    | 000513-36-0 | 50   |
| 3    |    | 5-Methyloxazolidine         | 87  | C4H9NO    | 058328-22-6 | 9    |
| 4    |    | Butanal, 2,2-dimethyl-      | 100 | C6H12O    | 002094-75-9 | 9    |
| 5    |    | Isopropylsulfonyl chloride  | 142 | C3H7ClO2S | 010147-37-2 | 9    |



Data Path : Z:\VOASRV\HPCHEM1\MSVOA\_X\DATA\VX122619\  
Data File : VX014271.D  
Acq On : 26 Dec 2019 15:58  
Operator : JC/SP  
Sample : K6405-02  
Misc : 5.0mL/MSVOA\_X/WATER  
ALS Vial : 14 Sample Multiplier: 1

Instrument :  
MSVOA\_X  
ClientSampleId :  
992-MW-02-(23.8)

Quant Method : Z:\VOASRV\HPCHEM1\MSVOA\_X\METHOD\82X121319W.M  
Quant Title : SW846 8260

TIC Library : C:\DATABASE\NIST11.L  
TIC Integration Parameters: LSCINT.P

| TIC Top Hit name | RT   | EstConc | Units | Response | --Internal Standard-- |      |         |      |
|------------------|------|---------|-------|----------|-----------------------|------|---------|------|
|                  |      |         |       |          | #                     | RT   | Resp    | Conc |
| Isobutane        | 1.30 | 5.4     | ug/l  | 156002   | 1                     | 5.65 | 1447200 | 50.0 |