

Data Path : Z:\VOASRV\HPCHEM1\MSVOA X\DATA\VX122718\
 Data File : VX006836.D
 Acq On : 27 Dec 2018 12:29
 Operator : JC/MD
 Sample : J6571-09 50X
 Misc : 5.0mL/MSVOA X/WATER
 ALS Vial : 7 Sample Multiplier: 1

Instrument :
 MSVOA_X
 ClientSampled :
 50087

Quant Time: Dec 28 04:53:02 2018
 Quant Method : Z:\VOASRV\HPCHEM1\MSVOA_X\METHOD\82X121818W.M
 Quant Title : SW846 8260
 QLast Update : Wed Dec 19 15:20:58 2018
 Response via : Initial Calibration

Internal Standards	R.T.	QIon	Response	Conc	Units	Dev(Min)
1) Pentafluorobenzene	5.66	168	674702	50.00	ug/l	0.00
34) 1,4-Difluorobenzene	6.86	114	995677	50.00	ug/l	0.00
63) Chlorobenzene-d5	10.11	117	927806	50.00	ug/l	0.00
72) 1,4-Dichlorobenzene-d4	12.08	152	478905	50.00	ug/l	0.00

System Monitoring Compounds

33) 1,2-Dichloroethane-d4	6.07	65	337675	46.44	ug/l	0.00
Spiked Amount	50.000		Recovery	=	92.88%	
35) Dibromofluoromethane	5.50	113	300287	47.69	ug/l	0.00
Spiked Amount	50.000		Recovery	=	95.38%	
50) Toluene-d8	8.71	98	1183680	49.86	ug/l	0.00
Spiked Amount	50.000		Recovery	=	99.72%	
62) 4-Bromofluorobenzene	11.13	95	440660	50.69	ug/l	0.00
Spiked Amount	50.000		Recovery	=	101.38%	

Target Compounds

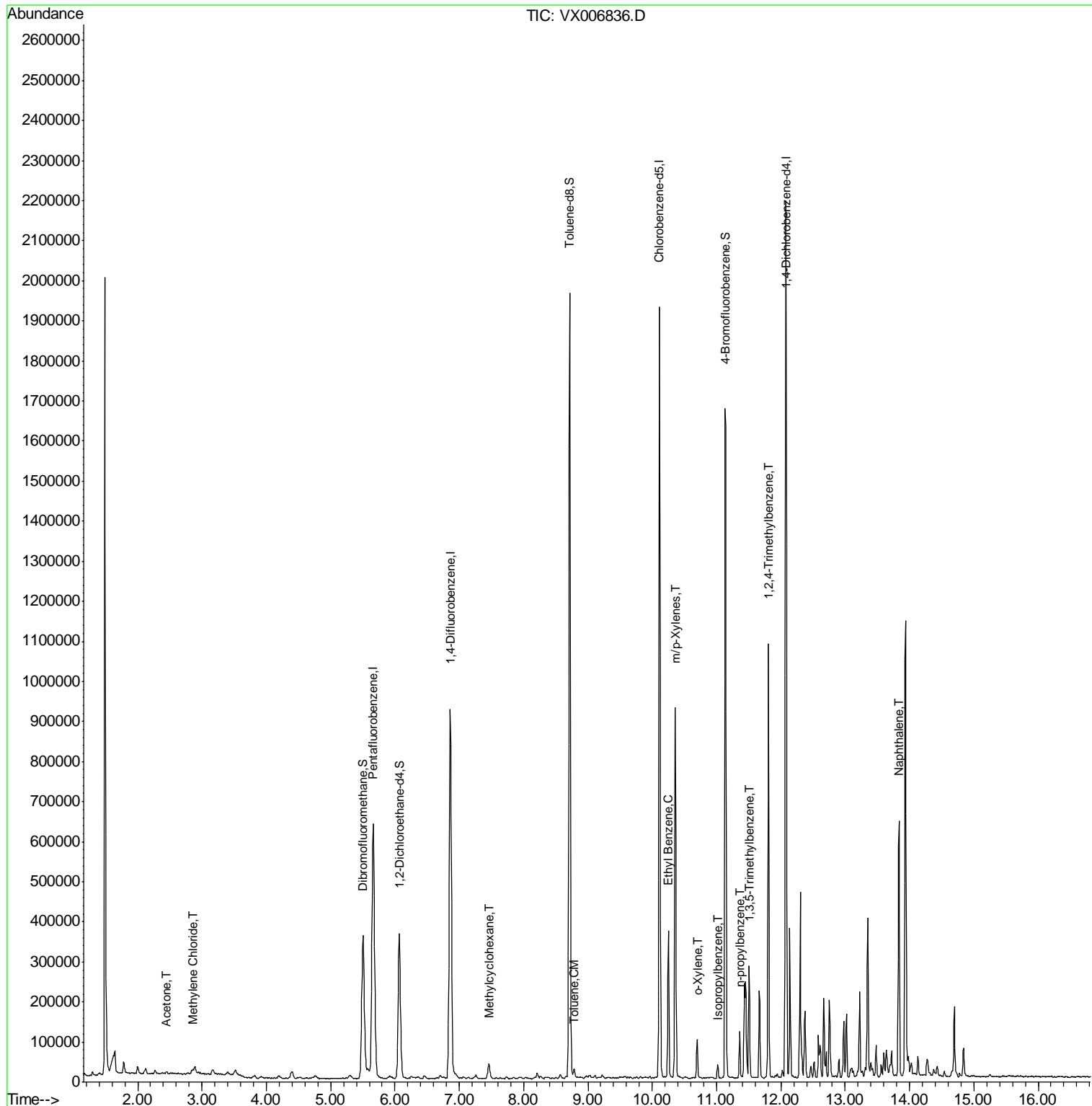
					Qvalue
16) Acetone	2.45	43	6480	1.940	ug/l 96
20) Methylene Chloride	2.85	84	3682	0.533	ug/l 94
39) Methylcyclohexane	7.46	83	17719	1.632	ug/l 87
52) Toluene	8.79	92	8535	0.527	ug/l 93
67) Ethyl Benzene	10.25	91	206137	6.427	ug/l 100
68) m/p-Xylenes	10.36	106	234540	18.531	ug/l 99
69) o-Xylene	10.70	106	23973	1.918	ug/l 96
73) Isopropylbenzene	11.02	105	16871	0.515	ug/l 100
78) n-propylbenzene	11.36	91	69573	1.928	ug/l 98
80) 1,3,5-Trimethylbenzene	11.51	105	117709	4.362	ug/l 99
84) 1,2,4-Trimethylbenzene	11.80	105	461744	16.268	ug/l 100
95) Naphthalene	13.83	128	408755	11.626	ug/l 99

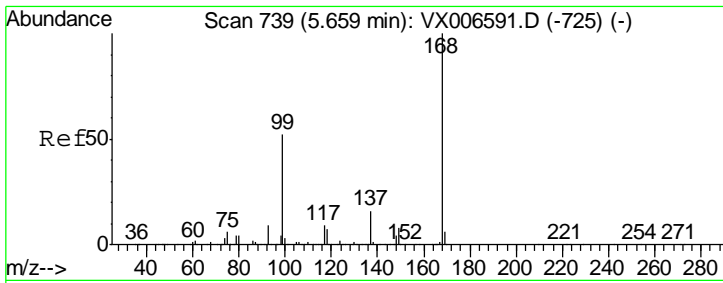
(#) = qualifier out of range (m) = manual integration (+) = signals summed

Data Path : Z:\VOASRV\HPCHEM1\MSVOA X\DATA\VX122718\
 Data File : VX006836.D
 Acq On : 27 Dec 2018 12:29
 Operator : JC/MD
 Sample : J6571-09 50X
 Misc : 5.0mL/MSVOA X/WATER
 ALS Vial : 7 Sample Multiplier: 1

Instrument :
 MSVOA_X
 ClientSampleId :
 50087

Quant Time: Dec 28 04:53:02 2018
 Quant Method : Z:\VOASRV\HPCHEM1\MSVOA_X\METHOD\82X121818W.M
 Quant Title : SW846 8260
 QLast Update : Wed Dec 19 15:20:58 2018
 Response via : Initial Calibration

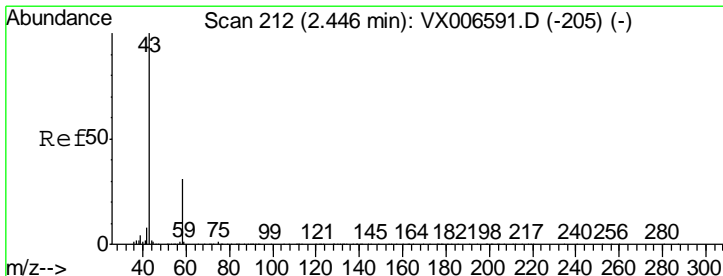
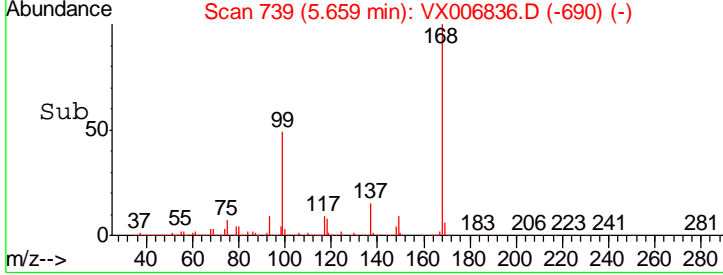
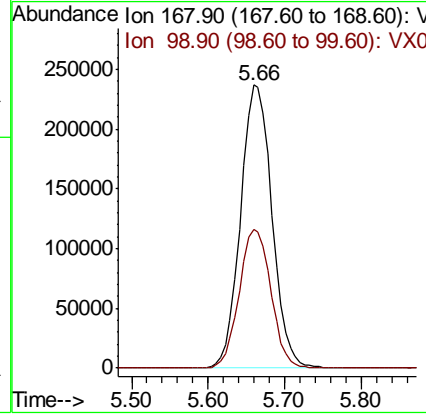
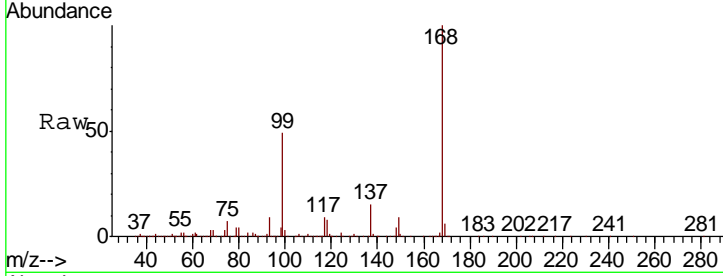




#1
 Pentafluorobenzene
 Concen: 50.000 ug/l
 RT: 5.66 min Scan# 739
 Delta R.T. 0.00 min
 Lab File: VX006836.D
 Acq: 27 Dec 2018 12:29

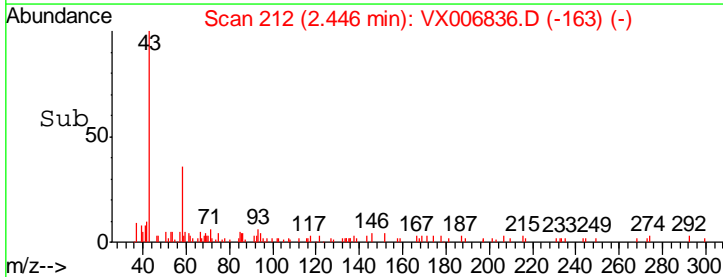
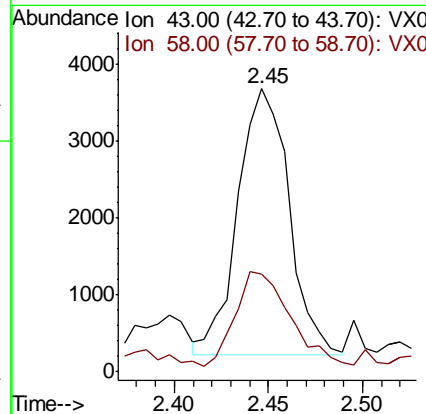
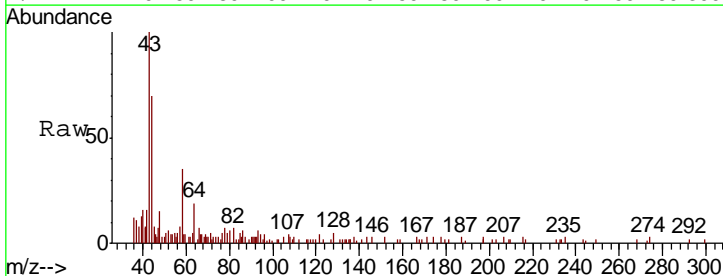
Instrument :
 MSVOA_X
 ClientSampled :
 50087

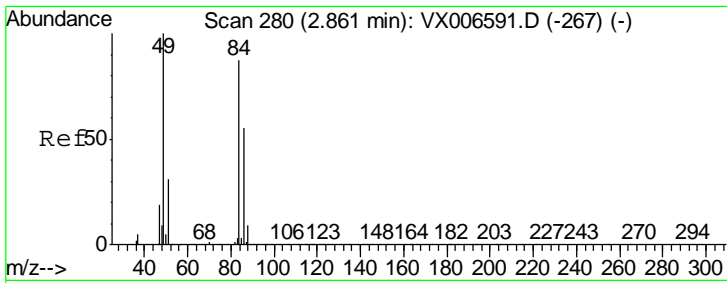
Tgt Ion	Resp	Lower	Upper
168	100		
99	48.9	41.8	62.8



#16
 Acetone
 Concen: 1.940 ug/l
 RT: 2.45 min Scan# 212
 Delta R.T. 0.00 min
 Lab File: VX006836.D
 Acq: 27 Dec 2018 12:29

Tgt Ion	Resp	Lower	Upper
43	100		
58	33.5	25.0	37.6

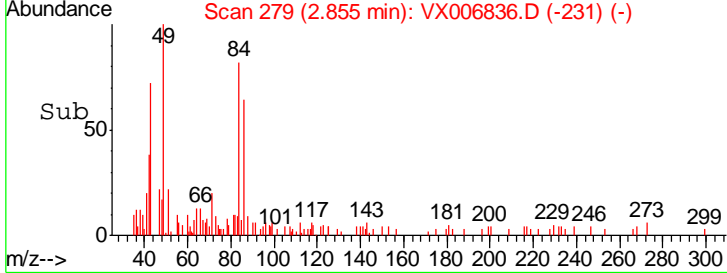
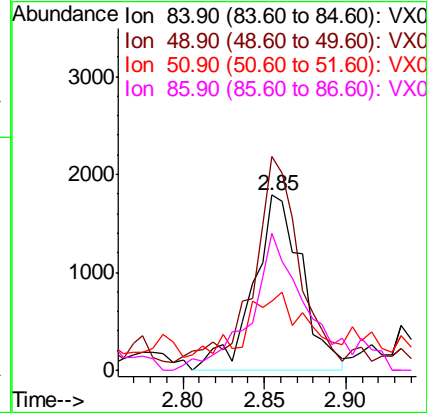
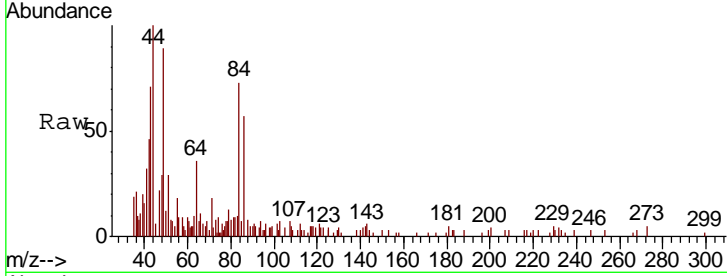




#20
 Methylene Chloride
 Concen: 0.533 ug/l
 RT: 2.85 min Scan# 279
 Delta R.T. -0.01 min
 Lab File: VX006836.D
 Acq: 27 Dec 2018 12:29

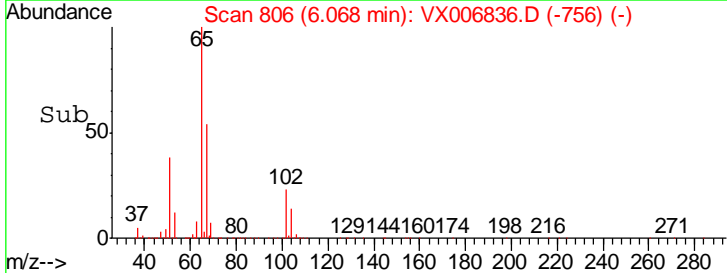
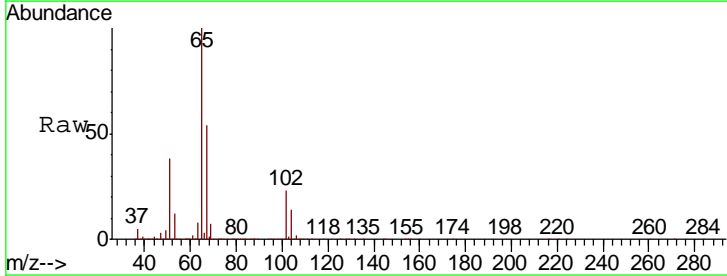
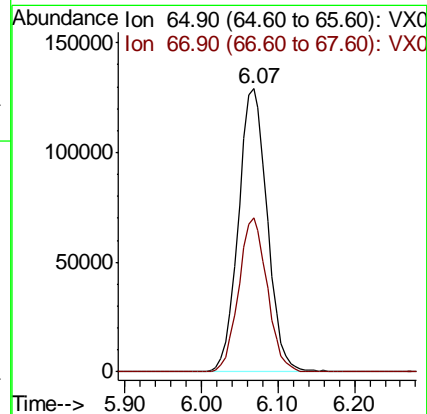
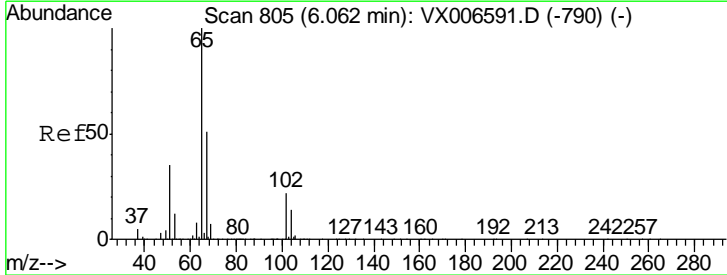
Instrument :
 MSVOA_X
 ClientSampled :
 50087

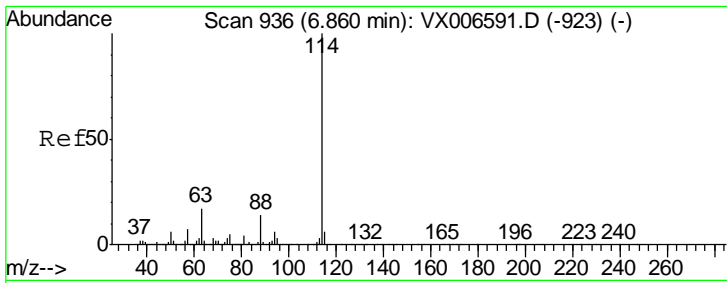
Tgt Ion	Resp	Lower	Upper
84	3682		
84	100		
49	116.8	91.8	137.6
51	31.0	28.5	42.7
86	72.0	50.2	75.2



#33
 1,2-Dichloroethane-d4
 Concen: 46.437 ug/l
 RT: 6.07 min Scan# 806
 Delta R.T. 0.01 min
 Lab File: VX006836.D
 Acq: 27 Dec 2018 12:29

Tgt Ion	Resp	Lower	Upper
65	337675		
65	100		
67	53.7	0.0	105.0

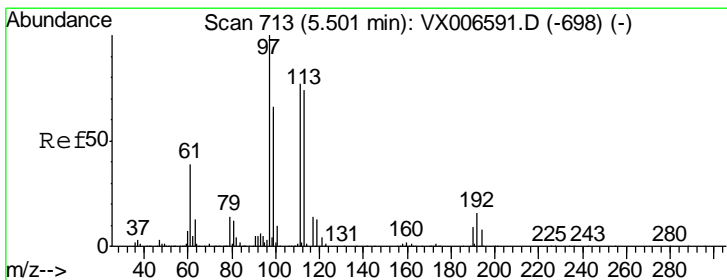
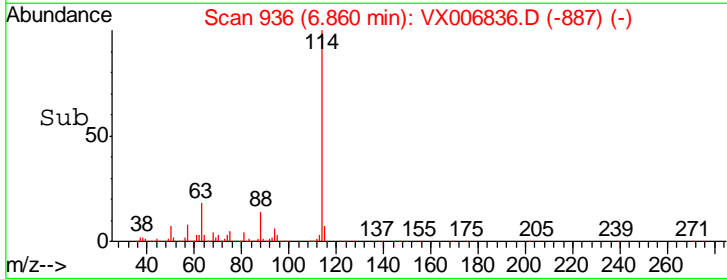
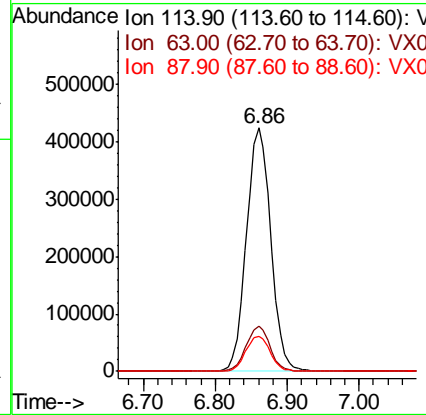
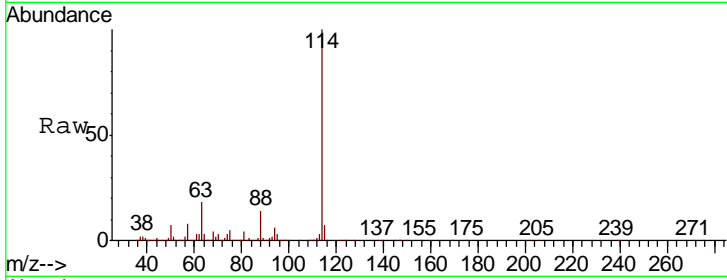




#34
 1,4-Difluorobenzene
 Concen: 50.000 ug/l
 RT: 6.86 min Scan# 936
 Delta R.T. 0.00 min
 Lab File: VX006836.D
 Acq: 27 Dec 2018 12:29

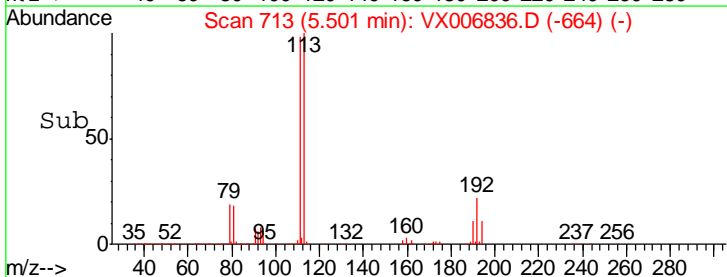
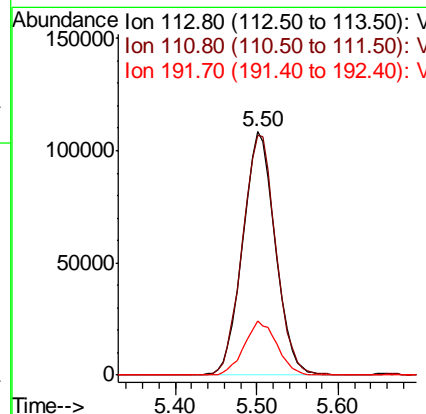
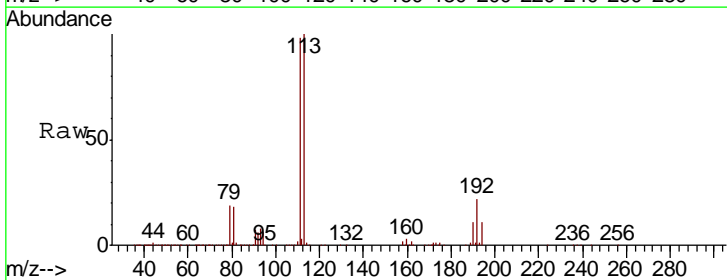
Instrument :
 MSVOA_X
 ClientSampled :
 50087

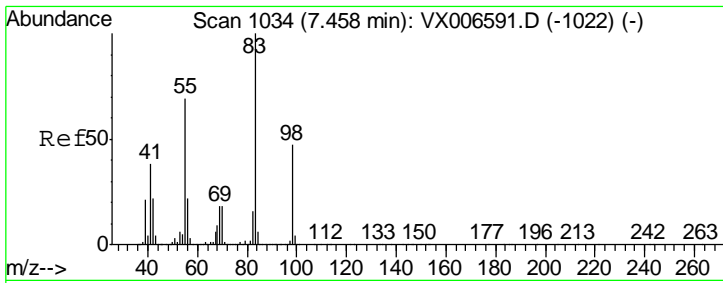
Tgt Ion	Resp	Lower	Upper
114	995677		
63	18.4	0.0	34.8
88	14.3	0.0	28.8



#35
 Dibromofluoromethane
 Concen: 47.691 ug/l
 RT: 5.50 min Scan# 713
 Delta R.T. 0.00 min
 Lab File: VX006836.D
 Acq: 27 Dec 2018 12:29

Tgt Ion	Resp	Lower	Upper
113	300287		
111	101.2	81.6	122.4
192	22.3	16.7	25.1

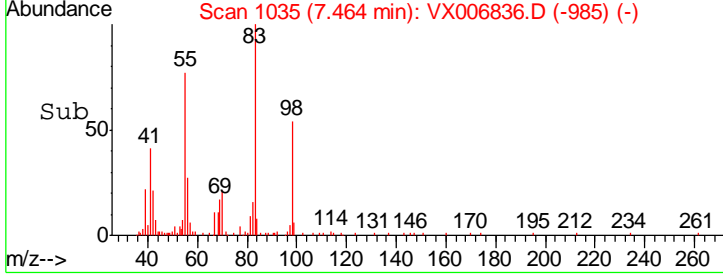
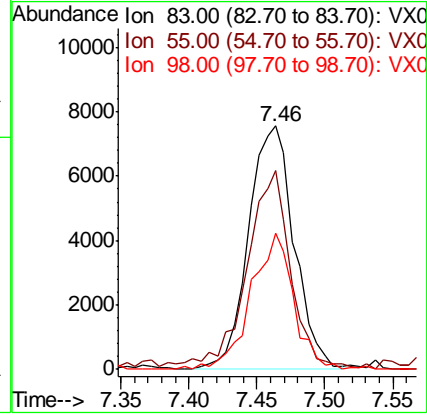
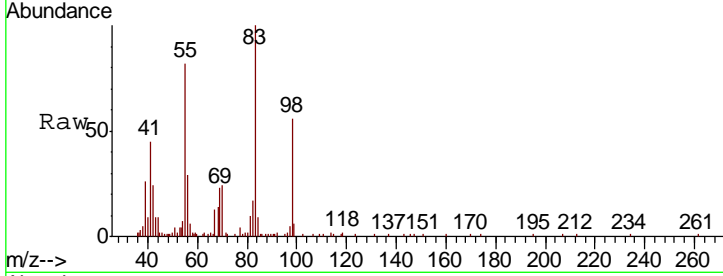




#39
 Methylcyclohexane
 Concen: 1.632 ug/l
 RT: 7.46 min Scan# 1035
 Delta R.T. 0.01 min
 Lab File: VX006836.D
 Acq: 27 Dec 2018 12:29

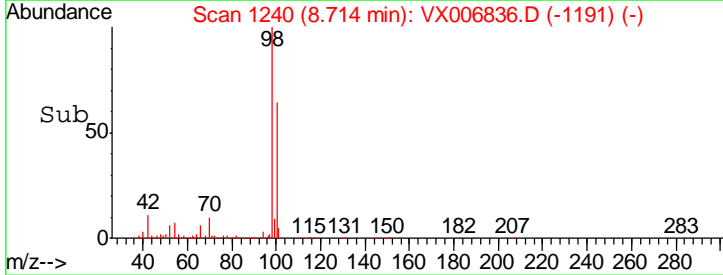
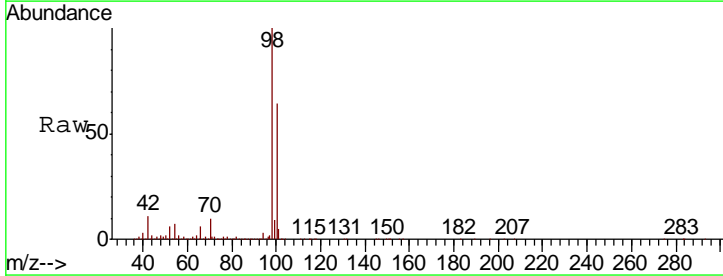
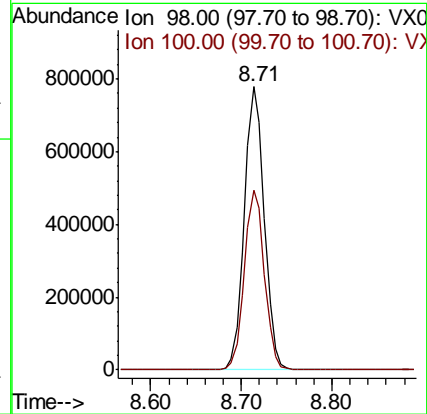
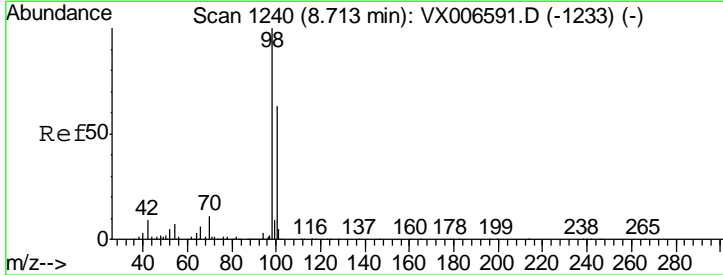
Instrument :
 MSVOA_X
 ClientSampled :
 50087

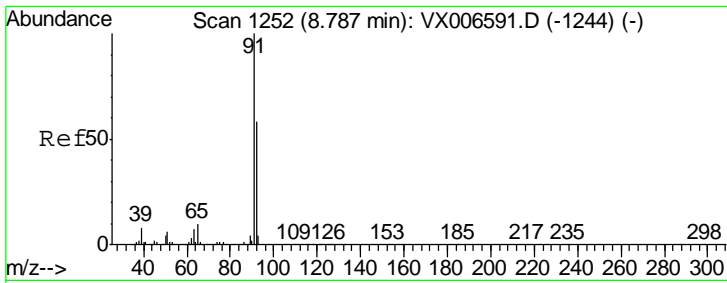
Tgt Ion	Resp	Lower	Upper
83	17719		
55	79.4	54.9	82.3
98	56.1	37.9	56.9



#50
 Toluene-d8
 Concen: 49.864 ug/l
 RT: 8.71 min Scan# 1240
 Delta R.T. 0.00 min
 Lab File: VX006836.D
 Acq: 27 Dec 2018 12:29

Tgt Ion	Resp	Lower	Upper
98	1183680		
100	63.9	52.0	78.0

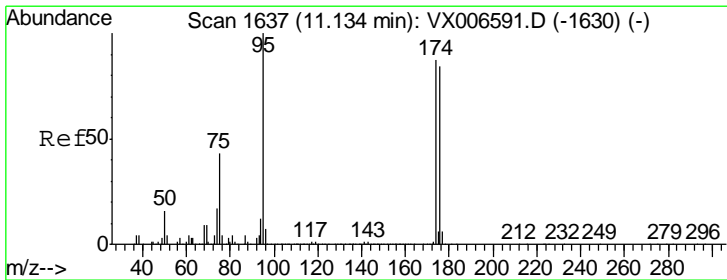
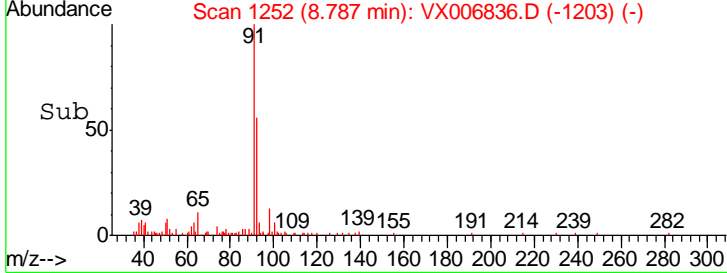
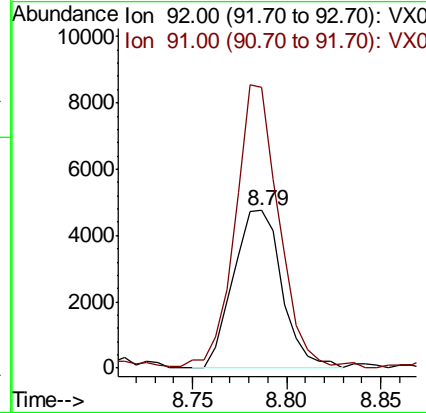
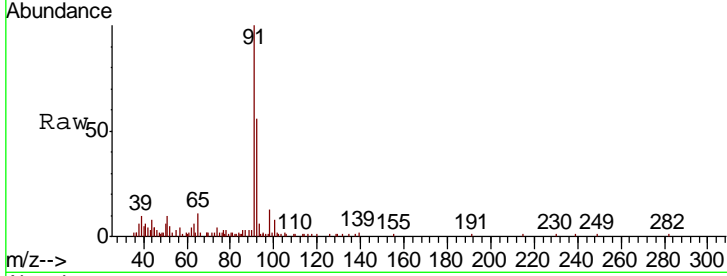




#52
 Toluene
 Concen: 0.527 ug/l
 RT: 8.79 min Scan# 1252
 Delta R.T. 0.00 min
 Lab File: VX006836.D
 Acq: 27 Dec 2018 12:29

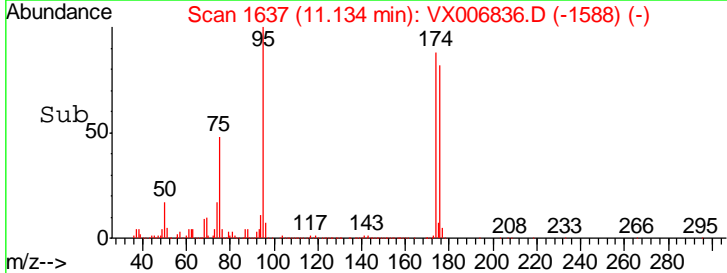
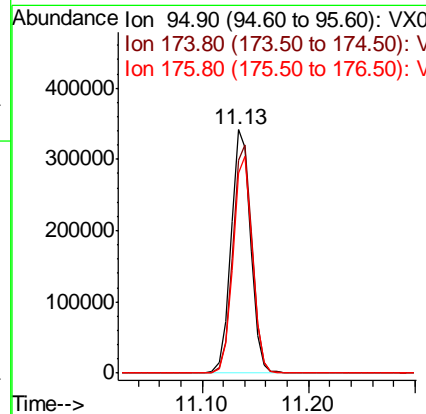
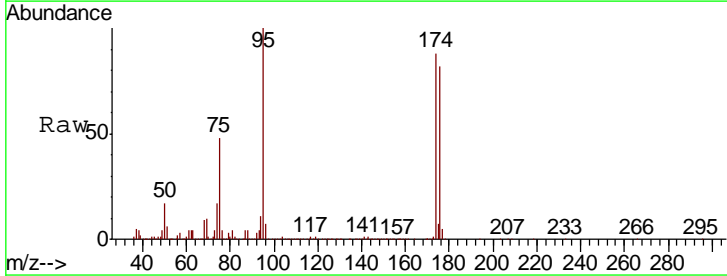
Instrument : MSVOA_X
 ClientSampled : 50087

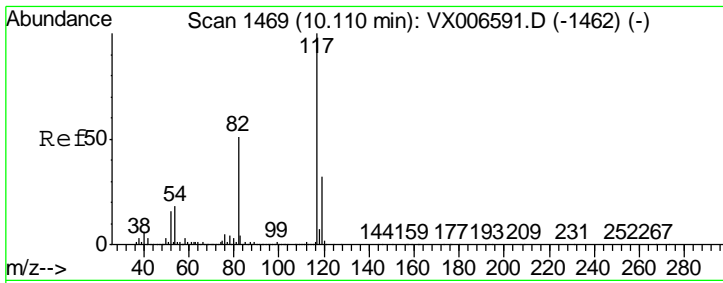
Tgt Ion	Resp	Lower	Upper
92	8535		
92	100		
91	161.8	137.6	206.4



#62
 4-Bromofluorobenzene
 Concen: 50.687 ug/l
 RT: 11.13 min Scan# 1637
 Delta R.T. 0.00 min
 Lab File: VX006836.D
 Acq: 27 Dec 2018 12:29

Tgt Ion	Resp	Lower	Upper
95	440660		
95	100		
174	93.2	0.0	182.2
176	88.1	0.0	178.8

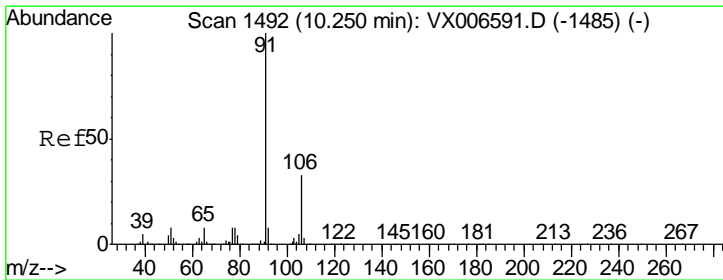
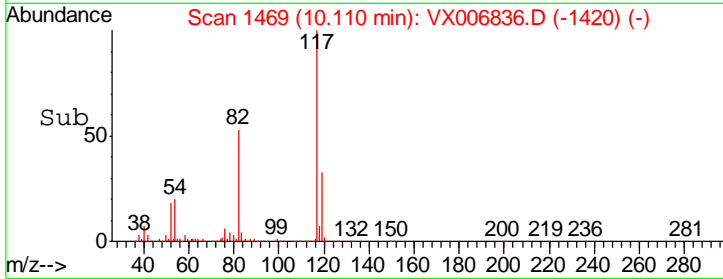
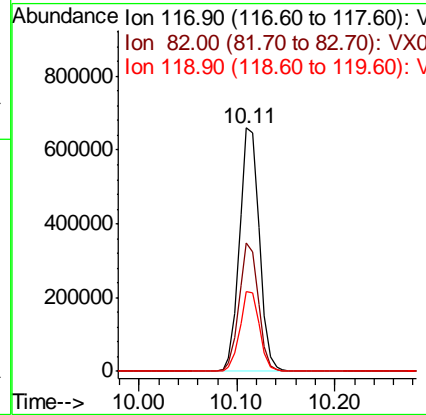
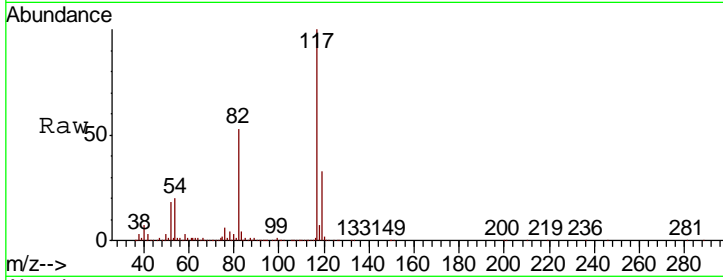




#63
 Chlorobenzene-d5
 Concen: 50.000 ug/l
 RT: 10.11 min Scan# 1469
 Delta R.T. 0.00 min
 Lab File: VX006836.D
 Acq: 27 Dec 2018 12:29

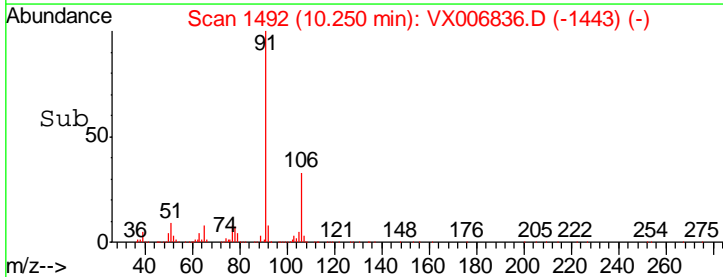
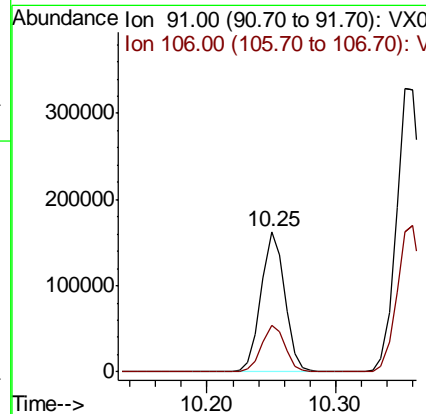
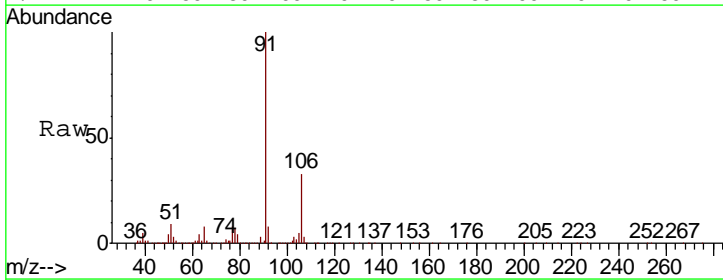
Instrument :
 MSVOA_X
 ClientSampled :
 50087

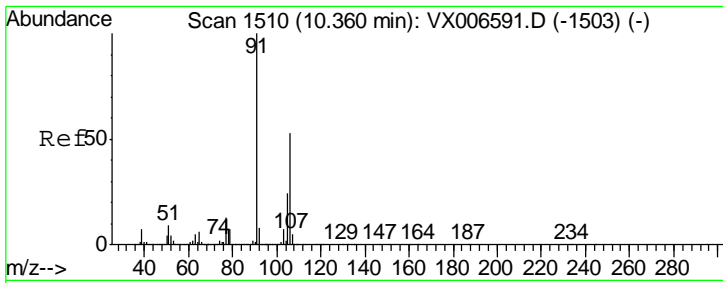
Tgt Ion	Resp	Lower	Upper
117	927806		
82	52.8	41.0	61.6
119	32.7	25.4	38.0



#67
 Ethyl Benzene
 Concen: 6.427 ug/l
 RT: 10.25 min Scan# 1492
 Delta R.T. 0.00 min
 Lab File: VX006836.D
 Acq: 27 Dec 2018 12:29

Tgt Ion	Resp	Lower	Upper
91	206137		
106	32.8	26.4	39.6

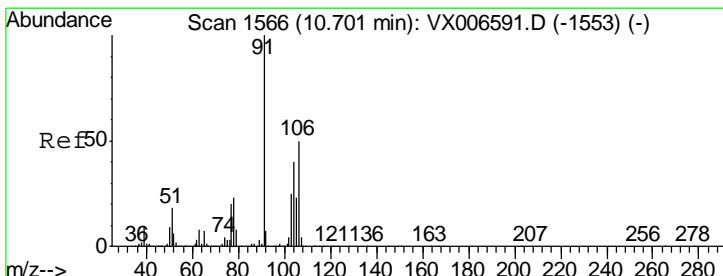
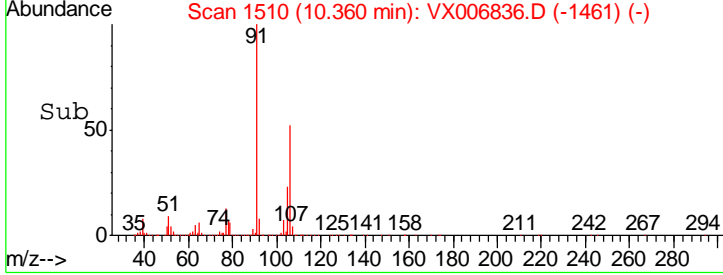
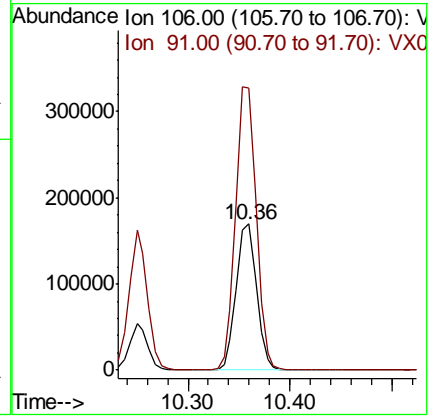
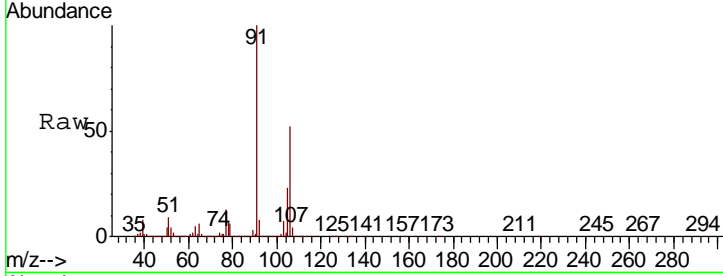




#68
 m/p-Xylenes
 Concen: 18.531 ug/l
 RT: 10.36 min Scan# 1510
 Delta R.T. 0.00 min
 Lab File: VX006836.D
 Acq: 27 Dec 2018 12:29

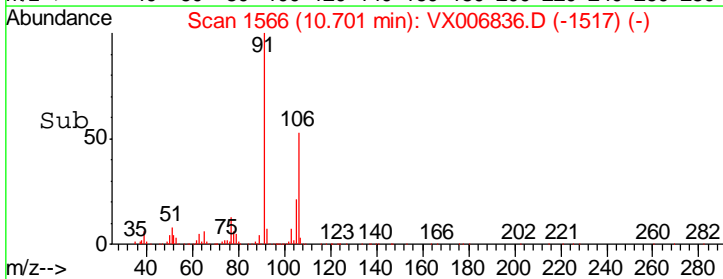
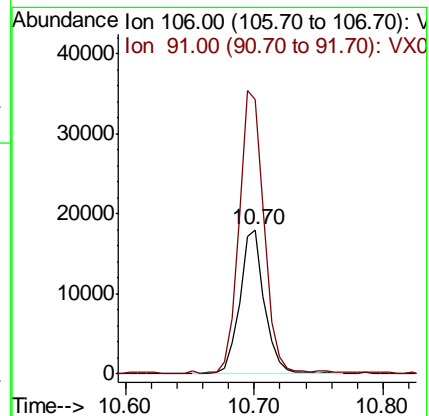
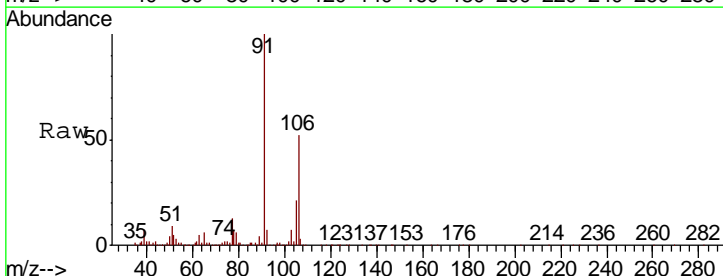
Instrument : MSVOA_X
 ClientSampled : 50087

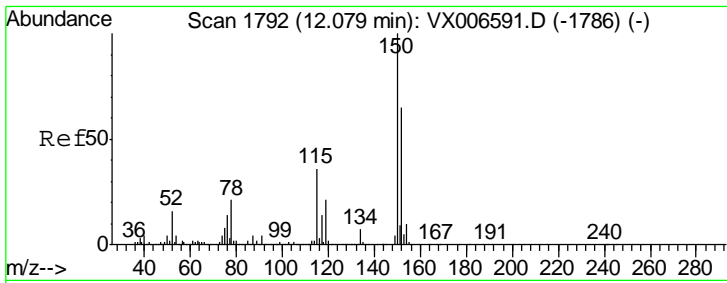
Tgt Ion	Resp	Lower	Upper
106	100		
91	195.5	155.8	233.6



#69
 o-Xylene
 Concen: 1.918 ug/l
 RT: 10.70 min Scan# 1566
 Delta R.T. 0.00 min
 Lab File: VX006836.D
 Acq: 27 Dec 2018 12:29

Tgt Ion	Resp	Lower	Upper
106	100		
91	196.3	101.3	303.7

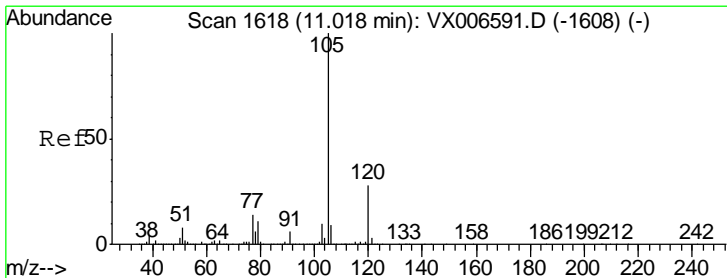
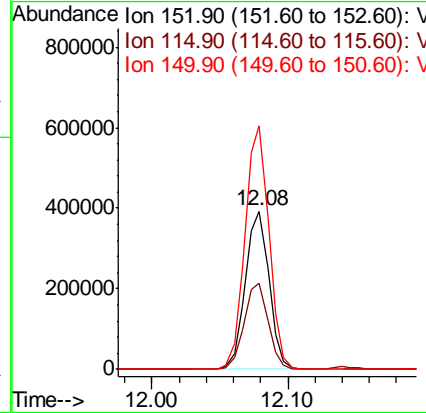
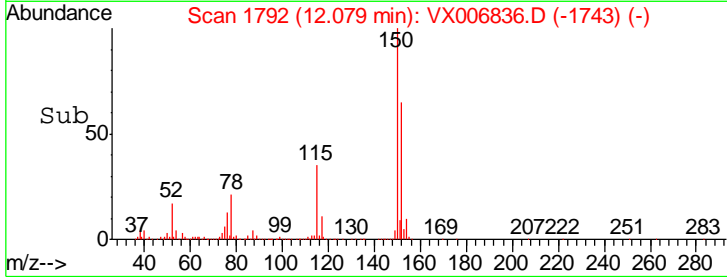
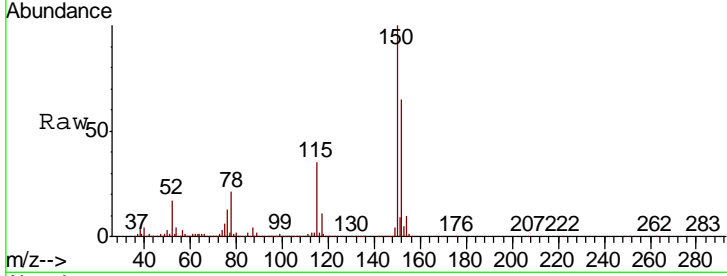




#72
 1,4-Dichlorobenzene-d4
 Concen: 50.000 ug/l
 RT: 12.08 min Scan# 1792
 Delta R.T. 0.00 min
 Lab File: VX006836.D
 Acq: 27 Dec 2018 12:29

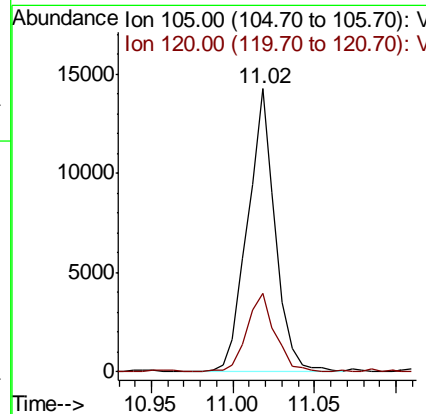
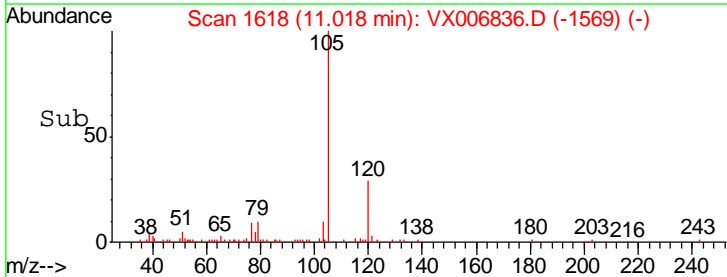
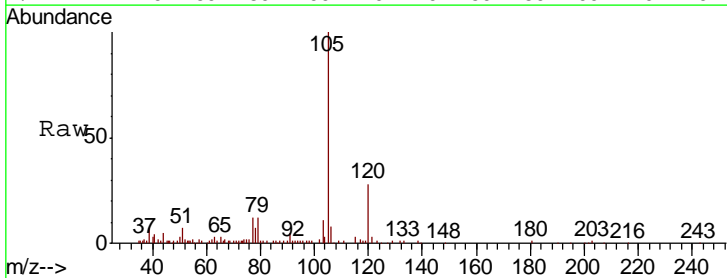
Instrument :
 MSVOA_X
 ClientSampled :
 50087

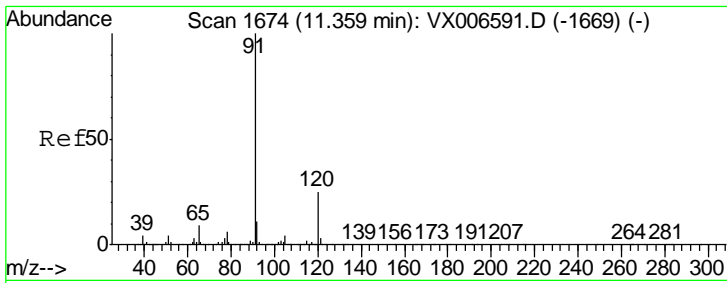
Tgt Ion	Resp	Lower	Upper
152	100		
115	54.8	39.1	117.2
150	154.3	0.0	344.8



#73
 Isopropylbenzene
 Concen: 0.515 ug/l
 RT: 11.02 min Scan# 1618
 Delta R.T. 0.00 min
 Lab File: VX006836.D
 Acq: 27 Dec 2018 12:29

Tgt Ion	Resp	Lower	Upper
105	100		
120	28.5	14.1	42.4

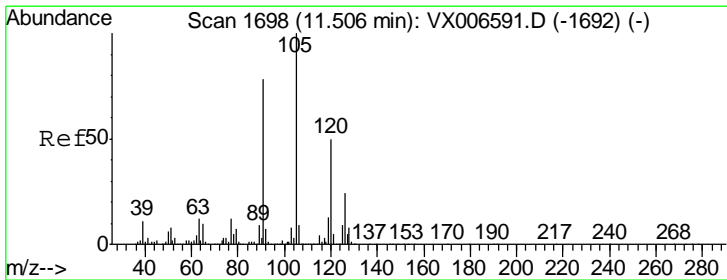
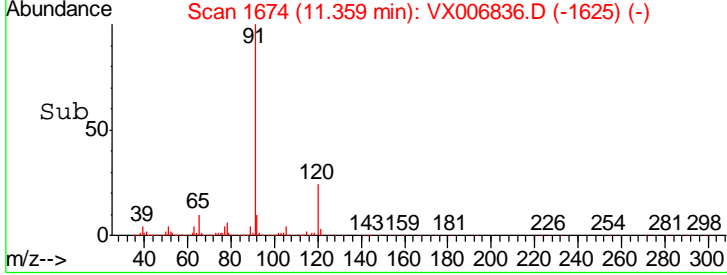
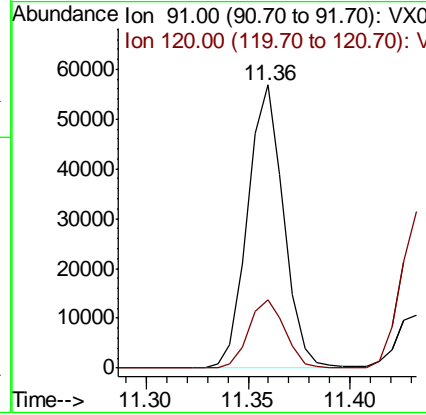
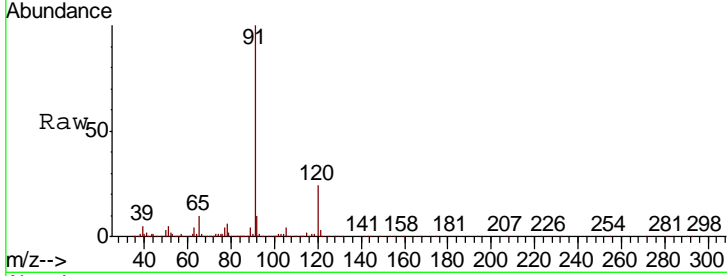




#78
 n-propylbenzene
 Concen: 1.928 ug/l
 RT: 11.36 min Scan# 1674
 Delta R.T. 0.00 min
 Lab File: VX006836.D
 Acq: 27 Dec 2018 12:29

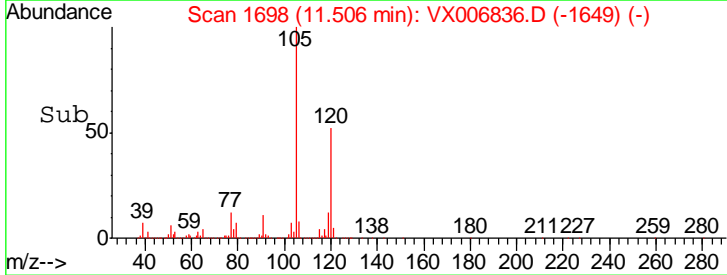
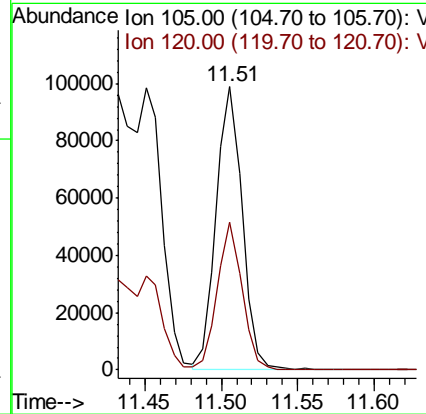
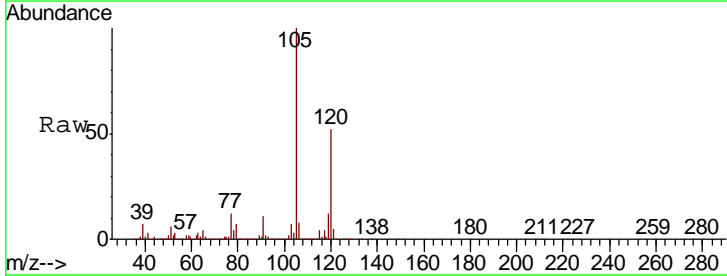
Instrument :
 MSVOA_X
 ClientSampled :
 50087

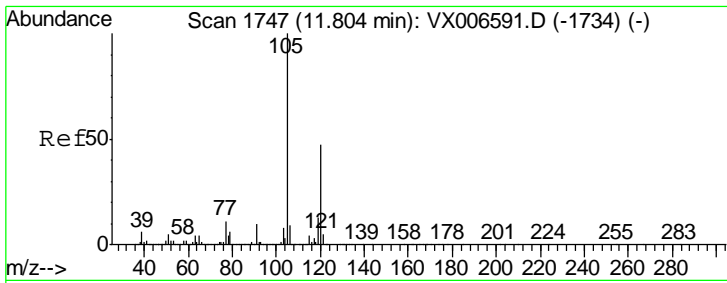
Tgt Ion	Resp	Lower	Upper
91	100		
120	24.4	12.7	38.0



#80
 1,3,5-Trimethylbenzene
 Concen: 4.362 ug/l
 RT: 11.51 min Scan# 1698
 Delta R.T. 0.00 min
 Lab File: VX006836.D
 Acq: 27 Dec 2018 12:29

Tgt Ion	Resp	Lower	Upper
105	100		
120	49.4	25.1	75.3

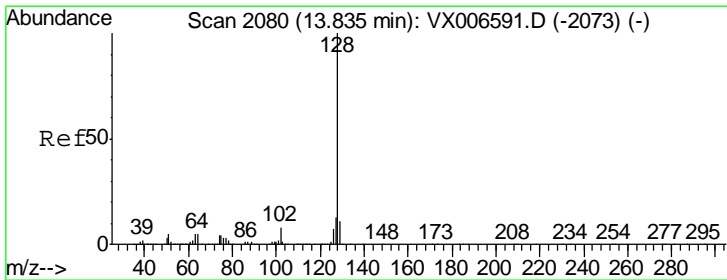
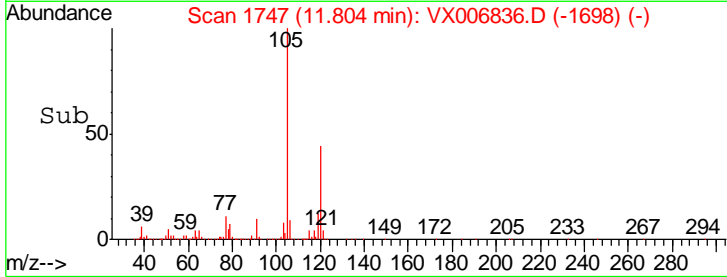
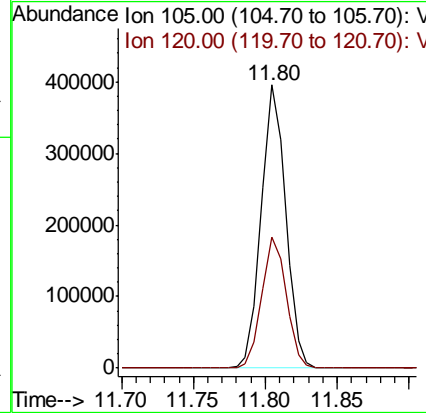
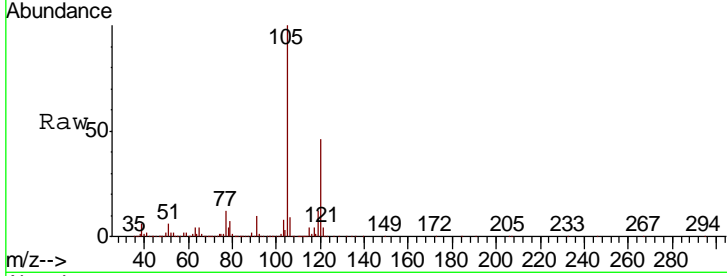




#84
 1,2,4-Trimethylbenzene
 Concen: 16.268 ug/l
 RT: 11.80 min Scan# 1747
 Delta R.T. 0.00 min
 Lab File: VX006836.D
 Acq: 27 Dec 2018 12:29

Instrument :
 MSVOA_X
 ClientSampled :
 50087

Tgt Ion	Resp	Lower	Upper
105	461744		
120	46.7	23.2	69.6



#95
 Naphthalene
 Concen: 11.626 ug/l
 RT: 13.83 min Scan# 2080
 Delta R.T. 0.00 min
 Lab File: VX006836.D
 Acq: 27 Dec 2018 12:29

Tgt Ion	Resp	Lower	Upper
128	408755		
127	13.0	10.1	15.1
129	11.0	8.6	13.0

