

Data Path : Z:\voasrv\HPCHEM1\MSVOA_X\Data\VX122821\
 Data File : VX026115.D
 Acq On : 28 Dec 2021 22:19
 Operator : JC/MD
 Sample : M5216-05
 Misc : 5.0mL/MSVOA_X/WATER
 ALS Vial : 22 Sample Multiplier: 1

Instrument :
 MSVOA_X
 ClientSampleId :
 COHB8

Integration Parameters: LSCINT.P

Integrator: RTE
 Smoothing : OFF
 Sampling : 1
 Start Thrs : 0.2
 Stop Thrs : 0

Filtering: 5
 Min Area: 0 % of largest Peak
 Max Peaks: 100
 Peak Location: TOP

If leading or trailing edge < 100 prefer < Baseline drop else tangent >
 Peak separation: 5

Method : Z:\voasrv\HPCHEM1\MSVOA_X\Method\SFAMXLM122821WMA.M
 Title : VOC Analysis

Signal : TIC: VX026115.D\data.ms

peak #	R.T. min	first scan	max scan	last scan	PK TY	peak height	corr. area	corr. % max.	% of total
1	1.373	43	47	53	rVB	130765	134052	15.65%	2.045%
2	1.672	92	96	103	rVB	106058	125314	14.63%	1.912%
3	2.312	195	201	211	rVB	206741	327986	38.30%	5.004%
4	2.507	231	233	235	rBV	901	878	0.10%	0.013%
5	2.946	298	305	314	rBV	13516	31265	3.65%	0.477%
6	3.160	337	340	344	rBV	783	1159	0.14%	0.018%
7	3.214	346	349	351	rBV	664	635	0.07%	0.010%
8	3.410	379	381	384	rBV2	739	872	0.10%	0.013%
9	3.507	394	397	398	rBV	649	520	0.06%	0.008%
10	3.818	445	448	449	rBV	549	520	0.06%	0.008%
11	4.117	496	497	499	rBV	683	529	0.06%	0.008%
12	4.464	545	554	567	rBV	66111	194748	22.74%	2.971%
13	4.848	615	617	618	rBV	859	567	0.07%	0.009%
14	4.964	633	636	638	rBV	572	680	0.08%	0.010%
15	5.068	640	653	666	rBV	112899	348770	40.73%	5.321%
16	5.287	687	689	692	rVB2	748	752	0.09%	0.011%
17	5.312	692	693	696	rBV	638	651	0.08%	0.010%
18	5.543	729	731	734	rVB2	658	726	0.08%	0.011%
19	5.580	734	737	739	rVV	755	722	0.08%	0.011%
20	5.647	746	748	750	rVV2	548	525	0.06%	0.008%
21	5.976	790	802	818	rVV2	286497	856342	100.00%	13.066%
22	6.153	830	831	834	rBV	694	537	0.06%	0.008%
23	6.220	841	842	845	rBV2	601	552	0.06%	0.008%
24	6.293	850	854	855	rBV	528	863	0.10%	0.013%
25	6.415	870	874	876	rVV	734	965	0.11%	0.015%
26	6.446	876	879	882	rVV	635	862	0.10%	0.013%
27	6.476	882	884	886	rVV	758	550	0.06%	0.008%
28	6.641	909	911	912	rBV	762	560	0.07%	0.009%
29	6.659	912	914	915	rVV	798	501	0.06%	0.008%
30	6.677	915	917	920	rVB	699	616	0.07%	0.009%
31	6.769	923	932	944	rVV	202871	484175	56.54%	7.387%
32	7.019	971	973	976	rBV	654	673	0.08%	0.010%
33	7.067	976	981	982	rVV	657	812	0.09%	0.012%
34	7.116	983	989	995	rVV3	3567	7446	0.87%	0.114%
35	7.311	1012	1021	1034	rBV	177973	389803	45.52%	5.948%
36	7.811	1101	1103	1105	rVV	767	654	0.08%	0.010%

Data Path : Z:\voasrv\HPCHEM1\MSVOA_X\Data\VX122821\
 Data File : VX026115.D
 Acq On : 28 Dec 2021 22:19
 Operator : JC/MD
 Sample : M5216-05
 Misc : 5.0mL/MSVOA_X/WATER
 ALS Vial : 22 Sample Multiplier: 1

Instrument :
 MSVOA_X
 ClientSampleId :
 COHB8

Integration Parameters: LSCINT.P

Integrator: RTE
 Smoothing : OFF
 Sampling : 1
 Start Thrs : 0.2
 Stop Thrs : 0

Filtering: 5
 Min Area: 0 % of largest Peak
 Max Peaks: 100
 Peak Location: TOP

If leading or trailing edge < 100 prefer < Baseline drop else tangent >
 Peak separation: 5

Method : Z:\voasrv\HPCHEM1\MSVOA_X\Method\SFAMXML122821WMA.M
 Title : VOC Analysis

37	7.933	1121	1123	1126	rVB2	673	744	0.09%	0.011%
38	8.110	1149	1152	1153	rBV2	430	518	0.06%	0.008%
39	8.329	1181	1188	1198	rVB	124610	206414	24.10%	3.149%
40	8.482	1210	1213	1214	rBV	861	567	0.07%	0.009%
41	8.500	1214	1216	1218	rVB	640	673	0.08%	0.010%
42	8.653	1234	1241	1249	rBV	442420	675017	78.83%	10.299%
43	8.951	1284	1290	1298	rVV	93900	134323	15.69%	2.049%
44	9.031	1302	1303	1308	rVB2	727	910	0.11%	0.014%
45	9.195	1327	1330	1335	rBV2	643	919	0.11%	0.014%
46	9.384	1356	1361	1374	rVB	282367	413463	48.28%	6.309%
47	9.524	1380	1384	1385	rBV	503	504	0.06%	0.008%
48	9.658	1403	1406	1408	rVV	779	622	0.07%	0.009%
49	9.768	1422	1424	1427	rBV	532	707	0.08%	0.011%
50	9.860	1435	1439	1440	rBV2	520	570	0.07%	0.009%
51	9.969	1453	1457	1460	rBV2	710	1191	0.14%	0.018%
52	10.055	1465	1471	1481	rBV	422871	607306	70.92%	9.266%
53	10.195	1492	1494	1497	rVB3	675	621	0.07%	0.009%
54	10.299	1509	1511	1517	rBV2	848	991	0.12%	0.015%
55	10.524	1546	1548	1550	rBV2	541	540	0.06%	0.008%
56	10.640	1565	1567	1570	rVV	714	941	0.11%	0.014%
57	10.683	1572	1574	1578	rVV	717	858	0.10%	0.013%
58	10.750	1582	1585	1587	rVV2	487	606	0.07%	0.009%
59	10.847	1599	1601	1605	rBV2	993	1530	0.18%	0.023%
60	11.122	1642	1646	1652	rBV3	3208	4345	0.51%	0.066%
61	11.195	1653	1658	1663	rBV	297219	378015	44.14%	5.768%
62	11.329	1676	1680	1685	rVB3	3611	5997	0.70%	0.092%
63	11.451	1698	1700	1702	rBV	773	685	0.08%	0.010%
64	11.475	1702	1704	1707	rVV2	1270	1481	0.17%	0.023%
65	11.640	1727	1731	1733	rBV	501	641	0.07%	0.010%
66	11.695	1736	1740	1741	rBV2	717	885	0.10%	0.014%
67	11.719	1742	1744	1745	rVV	1279	649	0.08%	0.010%
68	11.756	1745	1750	1753	rVB2	3097	4530	0.53%	0.069%
69	11.780	1753	1754	1756	rBV	638	675	0.08%	0.010%
70	11.841	1762	1764	1766	rBV3	921	940	0.11%	0.014%
71	11.932	1773	1779	1782	rBV3	1601	2520	0.29%	0.038%
72	11.969	1782	1785	1788	rVB	3729	3792	0.44%	0.058%
73	12.024	1789	1794	1805	rVB	404264	540708	63.14%	8.250%
74	12.128	1807	1811	1813	rBV2	1422	2357	0.28%	0.036%
75	12.219	1822	1826	1831	rBV2	9749	14291	1.67%	0.218%
76	12.323	1837	1843	1851	rVB	443307	583220	68.11%	8.899%

Data Path : Z:\voasrv\HPCHEM1\MSVOA_X\Data\VX122821\
 Data File : VX026115.D
 Acq On : 28 Dec 2021 22:19
 Operator : JC/MD
 Sample : M5216-05
 Misc : 5.0mL/MSVOA_X/WATER
 ALS Vial : 22 Sample Multiplier: 1

Instrument :
 MSVOA_X
 ClientSampleId :
 COHB8

Integration Parameters: LSCINT.P

Integrator: RTE
 Smoothing : OFF
 Sampling : 1
 Start Thrs : 0.2
 Stop Thrs : 0

Filtering: 5
 Min Area: 0 % of largest Peak
 Max Peaks: 100
 Peak Location: TOP

If leading or trailing edge < 100 prefer < Baseline drop else tangent >
 Peak separation: 5

Method : Z:\voasrv\HPCHEM1\MSVOA_X\Method\SFAMXLM122821WMA.M
 Title : VOC Analysis

77	12.487	1868	1870	1874	rVB	1142	880	0.10%	0.013%
78	12.664	1896	1899	1902	rVV2	673	1065	0.12%	0.016%
79	12.768	1912	1916	1918	rVV2	1465	1395	0.16%	0.021%
80	12.926	1939	1942	1944	rBV2	610	546	0.06%	0.008%
81	13.207	1987	1988	1990	rBV	808	619	0.07%	0.009%
82	13.396	2014	2019	2020	rBV2	568	608	0.07%	0.009%
83	13.591	2046	2051	2056	rBV2	13562	17683	2.06%	0.270%
84	13.828	2089	2090	2093	rBV2	511	639	0.07%	0.010%
85	13.963	2108	2112	2115	rBV3	2977	3607	0.42%	0.055%
86	14.048	2123	2126	2127	rBV	782	891	0.10%	0.014%
87	14.365	2177	2178	2181	rBV	655	672	0.08%	0.010%
88	14.517	2200	2203	2205	rBV	843	1091	0.13%	0.017%
89	14.834	2253	2255	2257	rBV3	621	665	0.08%	0.010%
90	15.078	2293	2295	2297	rBV2	514	643	0.08%	0.010%
91	15.170	2308	2310	2311	rBV2	625	504	0.06%	0.008%
92	15.212	2315	2317	2321	rBV3	537	705	0.08%	0.011%
93	15.377	2342	2344	2345	rBV	761	544	0.06%	0.008%
94	15.548	2370	2372	2375	rVB2	814	1086	0.13%	0.017%
95	15.602	2375	2381	2382	rBV	1039	1457	0.17%	0.022%
96	15.779	2407	2410	2412	rBV2	572	548	0.06%	0.008%
97	15.804	2412	2414	2416	rVB2	821	804	0.09%	0.012%
98	15.840	2416	2420	2422	rBV	859	1367	0.16%	0.021%
99	16.194	2474	2478	2481	rBV2	796	1311	0.15%	0.020%
100	16.285	2490	2493	2494	rBV3	540	610	0.07%	0.009%

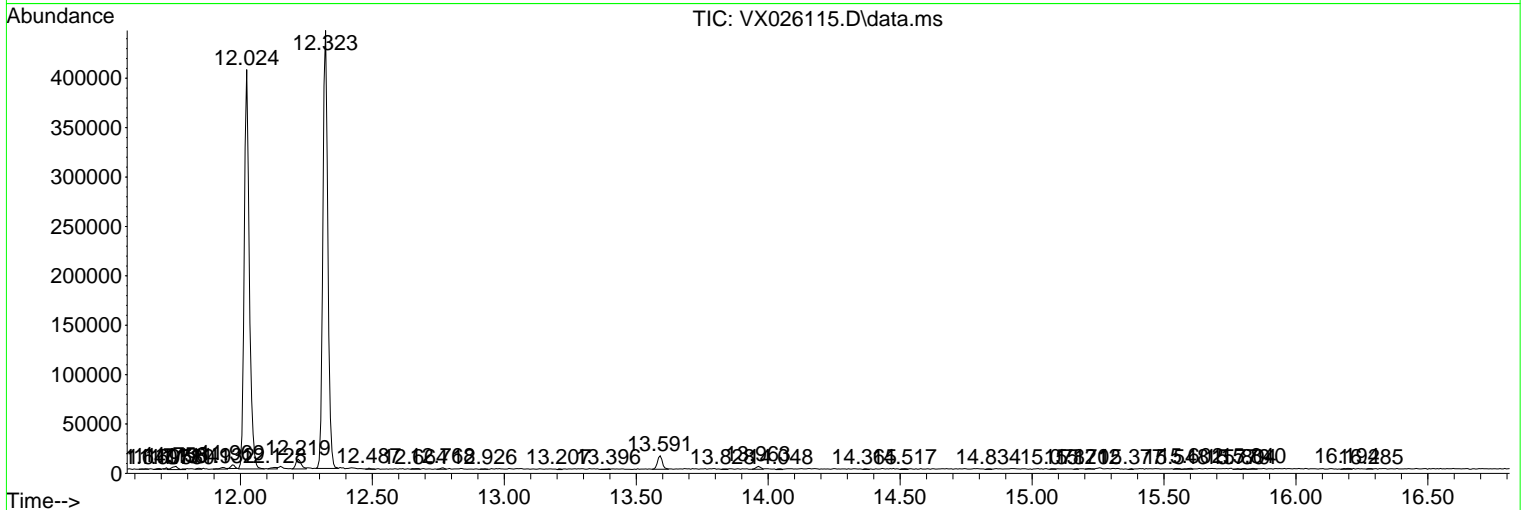
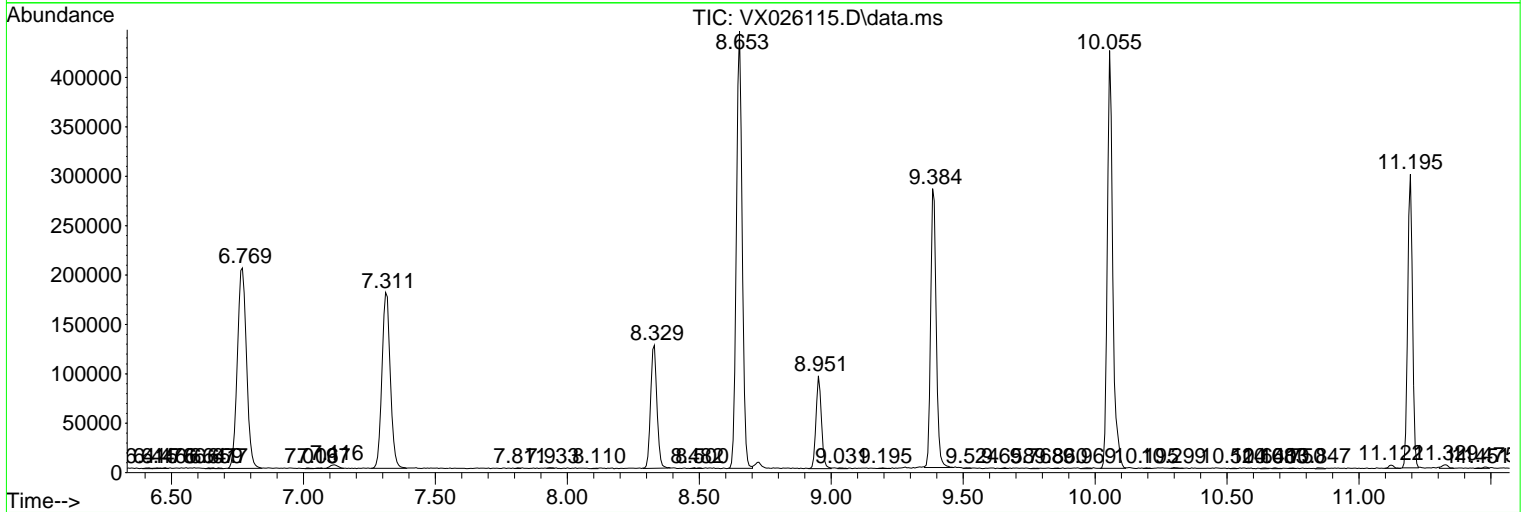
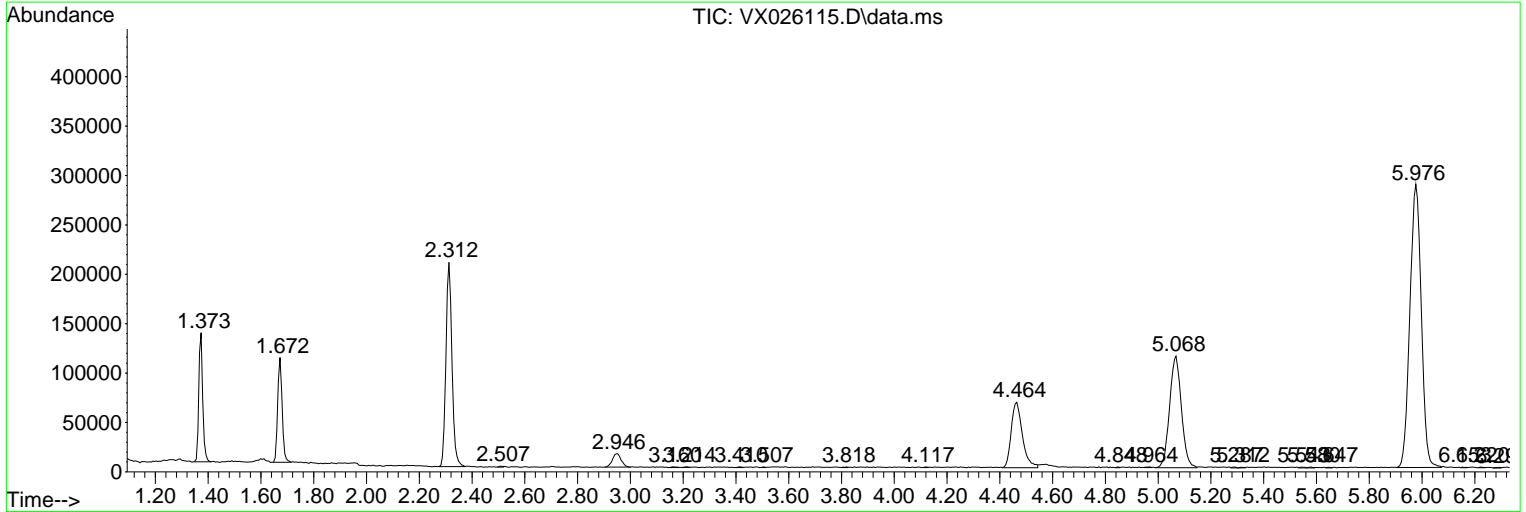
Sum of corrected areas: 6553988

Data Path : Z:\voasrv\HPCHEM1\MSVOA_X\Data\VX122821\
 Data File : VX026115.D
 Acq On : 28 Dec 2021 22:19
 Operator : JC/MD
 Sample : M5216-05
 Misc : 5.0mL/MSVOA_X/WATER
 ALS Vial : 22 Sample Multiplier: 1

Instrument :
 MSVOA_X
 ClientSampleId :
 COHB8

Quant Method : Z:\voasrv\HPCHEM1\MSVOA_X\Method\SFAMXLM122821WMA.M
 Quant Title : VOC Analysis

TIC Library : C:\Database\NIST20.L
 TIC Integration Parameters: LSCINT.P



Library Search Compound Report

Data Path : Z:\voasrv\HPCHEM1\MSVOA_X\Data\VX122821\
Data File : VX026115.D
Acq On : 28 Dec 2021 22:19
Operator : JC/MD
Sample : M5216-05
Misc : 5.0mL/MSVOA_X/WATER
ALS Vial : 22 Sample Multiplier: 1

Instrument :
MSVOA_X
ClientSampleId :
COHB8

Quant Method : Z:\voasrv\HPCHEM1\MSVOA_X\Method\SFAMXML122821WMA.M
Quant Title : VOC Analysis

TIC Library : C:\Database\NIST20.L
TIC Integration Parameters: LSCINT.P

No Library Search Compounds Detected

Data Path : Z:\voasrv\HPCHEM1\MSVOA_X\Data\VX122821\
Data File : VX026115.D
Acq On : 28 Dec 2021 22:19
Operator : JC/MD
Sample : M5216-05
Misc : 5.0mL/MSVOA_X/WATER
ALS Vial : 22 Sample Multiplier: 1

Instrument :
MSVOA_X
ClientSampleId :
COHB8

Quant Method : Z:\voasrv\HPCHEM1\MSVOA_X\Method\SFAMXLM122821WMA.M
Quant Title : VOC Analysis

TIC Library : C:\Database\NIST0.L
TIC Integration Parameters: LSCINT.P

TIC Top Hit name	RT	EstConc	Units	Response	--Internal Standard--			
					#	RT	Resp	Conc
