

Data Path : Z:\voasrv\HPCHEM1\MSVOA\_X\Data\VX122920\  
 Data File : VX020434.D  
 Acq On : 29 Dec 2020 15:09  
 Operator : JC/MD  
 Sample : L5236-01 10X  
 Misc : 5.0mL/MSVOA\_X/WATER  
 ALS Vial : 14 Sample Multiplier: 1

**Instrument :**  
 MSVOA\_X  
**ClientSampled :**  
 1015-MW-01(23)

Quant Time: Dec 30 02:37:25 2020  
 Quant Method : Z:\VOASRV\HPCHEM1\MSVOA\_X\METHCD\82X12182CW.M  
 Quant Title : SW846 8260  
 QLast Update : Fri Dec 18 13:09:49 2020  
 Response via : Initial Calibration

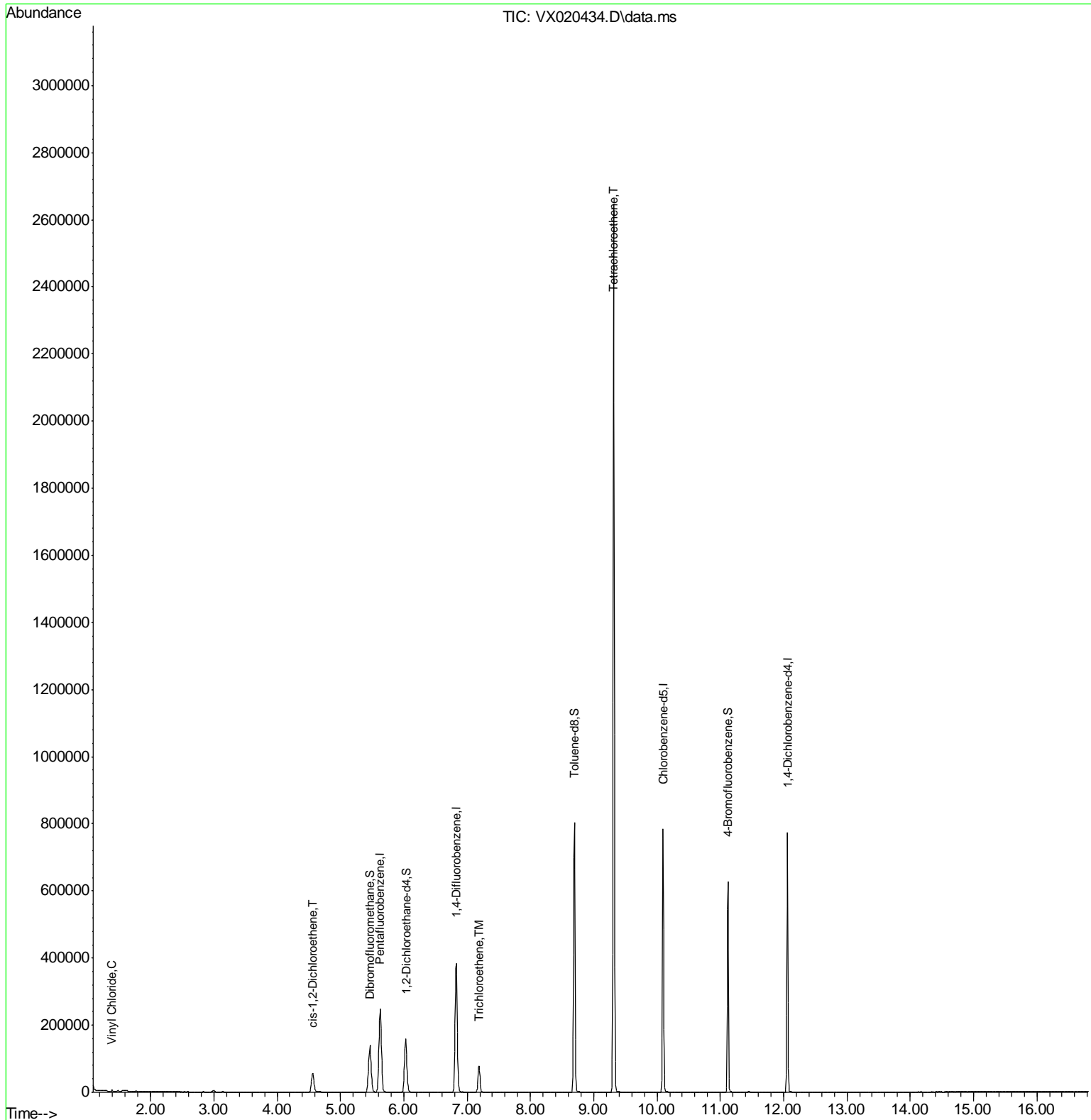
Compound	R.T.	Cl on	Response	Conc	Units	Dev(Min)
<b>Internal Standards</b>						
1) Pentafluorobenzene	5.629	168	242542	50.00	ug/l	0.01
34) 1,4-Difluorobenzene	6.830	114	400607	50.00	ug/l	0.00
63) Chlorobenzene-d5	10.097	117	375131	50.00	ug/l	0.00
72) 1,4-Dichlorobenzene-d4	12.060	152	160772	50.00	ug/l	0.00
<b>System Monitoring Compounds</b>						
33) 1,2-Dichloroethane-d4	6.031	65	147575	45.39	ug/l	0.00
Spiked Amount	50.000	Range	61 - 141	Recovery	=	90.78%
35) Dibromofluoromethane	5.464	113	124006	48.39	ug/l	0.00
Spiked Amount	50.000	Range	69 - 133	Recovery	=	96.78%
50) Toluene-d8	8.695	98	486321	49.30	ug/l	0.00
Spiked Amount	50.000	Range	65 - 126	Recovery	=	98.60%
62) 4-Bromofluorobenzene	11.122	95	173669	46.00	ug/l	0.00
Spiked Amount	50.000	Range	58 - 135	Recovery	=	92.00%
<b>Target Compounds</b>						
4) Vinyl Chloride	1.392	62	1541	0.46	ug/l	93
27) cis-1,2-Dichloroethene	4.562	96	37797	11.14	ug/l	91
44) Trichloroethene	7.189	130	31229	9.80	ug/l	97
64) Tetrachloroethene	9.317	164	507661	179.61	ug/l	96

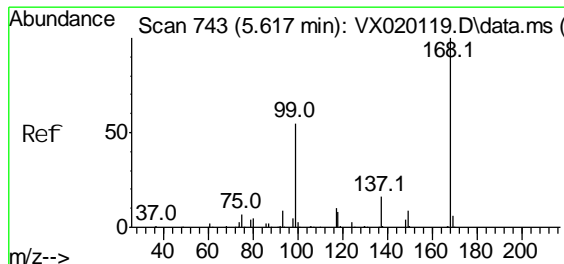
(#) = qualifier out of range (m) = manual integration (+) = signals summed

Data Path : Z:\voasrv\HPCHEM1\MSVOA\_X\Data\VX122920\  
 Data File : VX020434.D  
 Acq On : 29 Dec 2020 15:09  
 Operator : JC/MD  
 Sample : L5236-01 10X  
 Mi sc : 5.0mL/MSVOA\_X/WATER  
 ALS Vial : 14 Sample Multiplier: 1

Instrument :  
 MSVOA\_X  
 Client Sampled :  
 1015-MW-01(23)

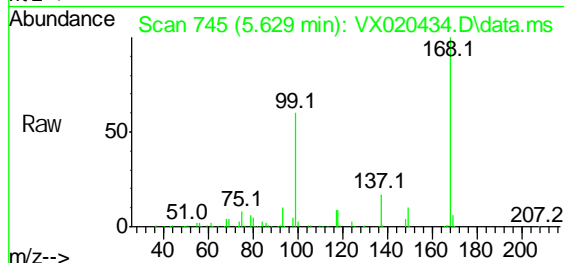
Quant Time: Dec 30 02:37:25 2020  
 Quant Method : Z:\VOASRV\HPCHEM1\MSVOA\_X\METHCD\82X121820W.M  
 Quant Title : SW846 8260  
 QLast Update : Fri Dec 18 13:09:49 2020  
 Response via : Initial Calibration



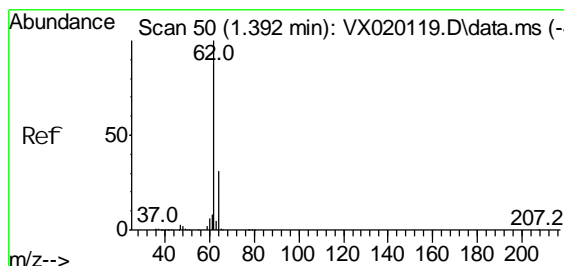
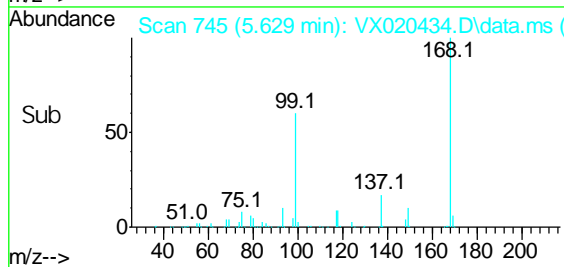
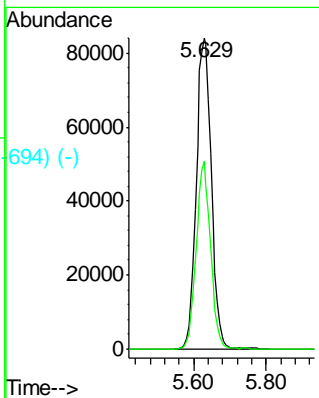


Scan 743 (5.617 min): VX020119.D\data.ms (-740) (-)  
 Pentafluorobenzene  
 Concen: 50.00 ug/l  
 RT: 5.629 min Scan# 745  
 Delta R.T. 0.012 min  
 Lab File: VX020434.D  
 Acq: 29 Dec 2020 15:09

**Instrument :**  
 MSVOA\_X  
**Client Sampled :**  
 1015-MW-01(23)

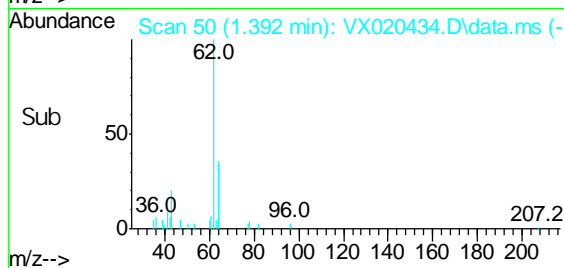
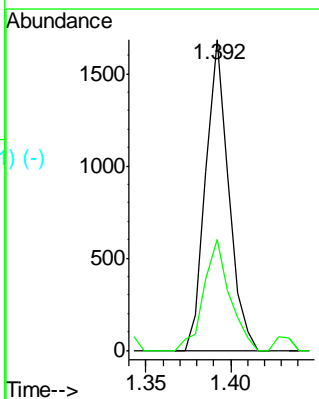
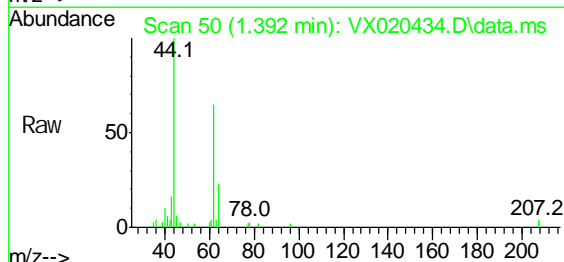


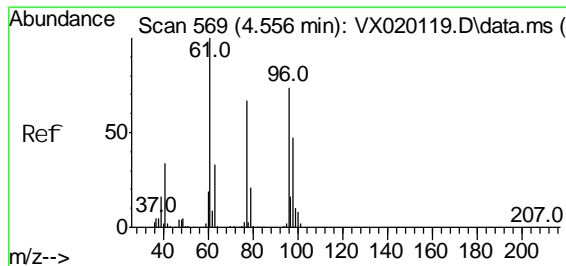
Tgt Ion: 168 Resp: 242542  
 Ion Ratio Lower Upper  
 168 100  
 99 60.3 45.8 68.6



Scan 50 (1.392 min): VX020119.D\data.ms (-457) (-)  
 Vinyl Chloride  
 Concen: 0.46 ug/l  
 RT: 1.392 min Scan# 50  
 Delta R.T. -0.000 min  
 Lab File: VX020434.D  
 Acq: 29 Dec 2020 15:09

Tgt Ion: 62 Resp: 1541  
 Ion Ratio Lower Upper  
 62 100  
 64 35.9 25.7 38.5



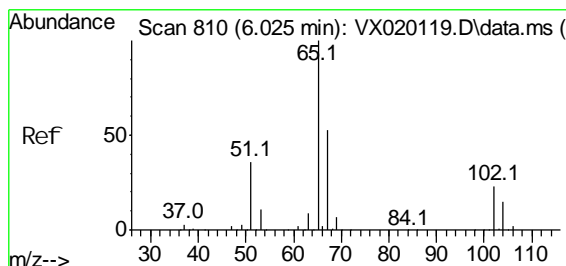
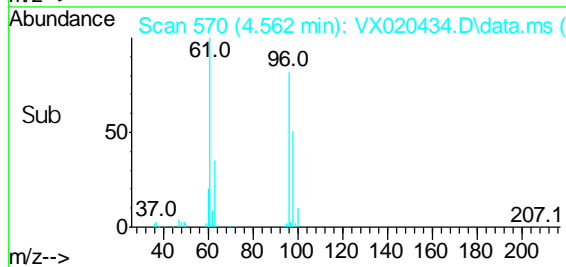
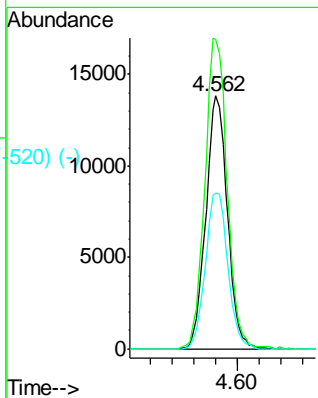
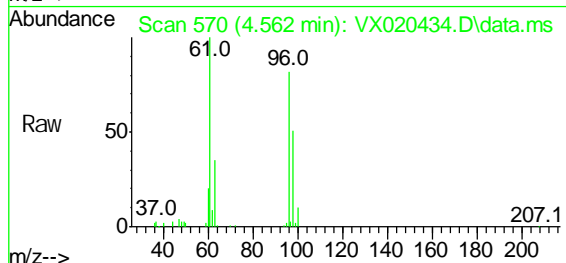


Scan 569 (4.556 min): VX020119.D\data.ms (-527) (-)  
 ci s-1, 2-Di chl croethene  
 Concen: 11.14 ug/l  
 RT: 4.562 min Scan# 570  
 Del ta R.T. C.006 min  
 Lab File: VX020434.D  
 Acq: 29 Dec 2020 15:09

**Instrument :**  
 MSVOA\_X  
**ClientSampled :**  
 1015-MW-01(23)

Tgt Ion: 96 Resp: 37797

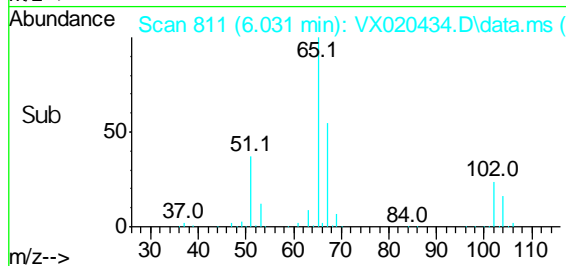
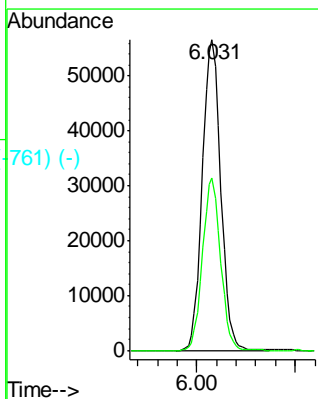
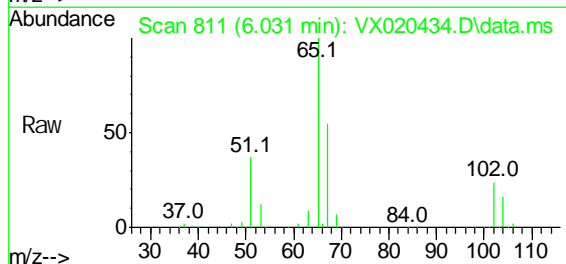
Ion Ratio	Lower	Upper
96	100	
61	127.5	0.0 285.6
98	64.4	0.0 129.6

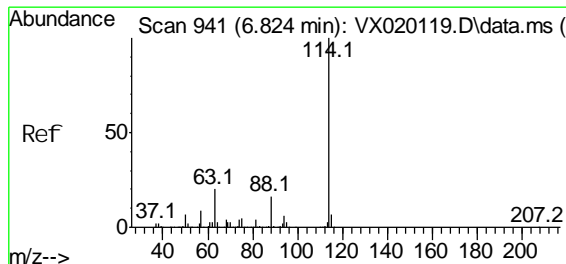


Scan 810 (6.025 min): VX020119.D\data.ms (-763) (-)  
 1, 2-Di chl oroethane-d4  
 Concen: 45.39 ug/l  
 RT: 6.031 min Scan# 811  
 Del ta R.T. 0.006 min  
 Lab File: VX020434.D  
 Acq: 29 Dec 2020 15:09

Tgt Ion: 65 Resp: 147575

Ion Ratio	Lower	Upper
65	100	
67	54.3	0.0 105.4

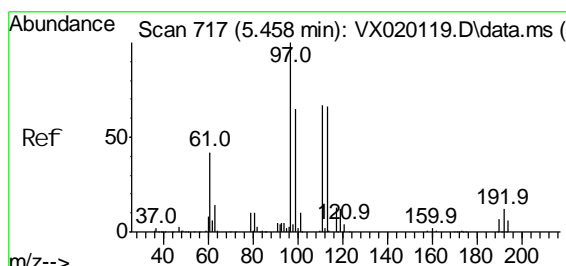
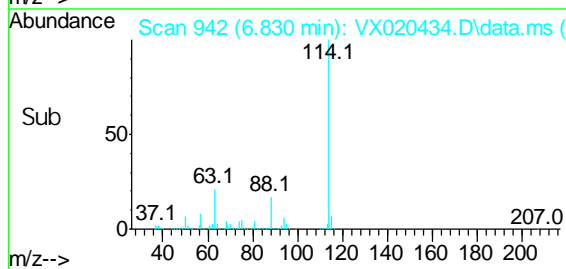
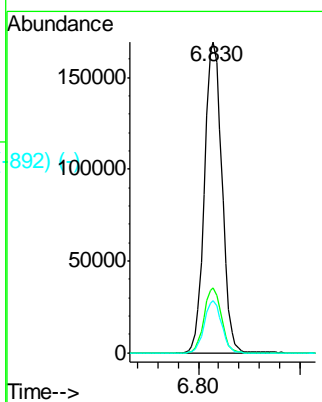
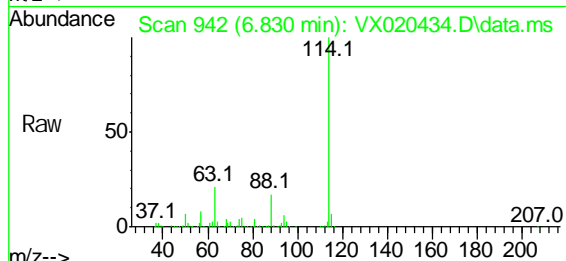




Scan 941 (6.824 min): VX020119.D\data.ms (-960) (-)  
 1,4-Difluorobenzene  
 Concen: 50.00 ug/l  
 RT: 6.830 min Scan# 942  
 Delta R.T. 0.006 min  
 Lab File: VX020434.D  
 Acq: 29 Dec 2020 15:09

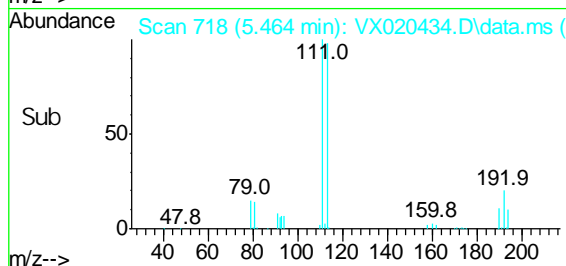
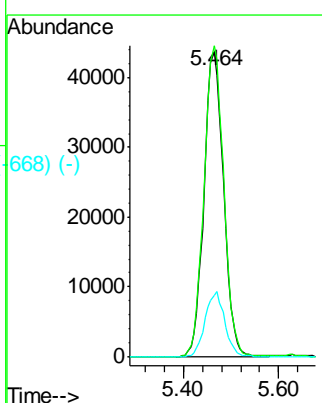
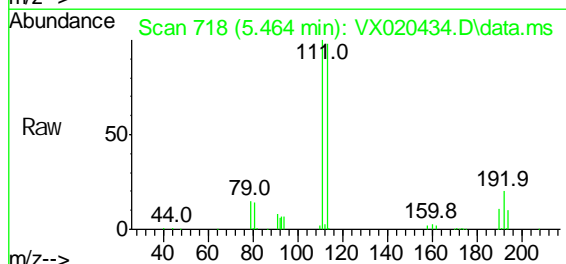
**Instrument :**  
 MSVOA\_X  
**ClientSampled :**  
 1015-MW-01(23)

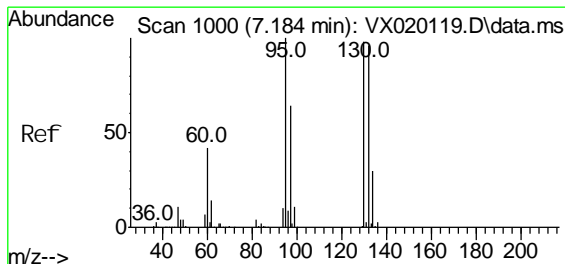
Tgt Ion:	114	Resp:	400607
Ion Ratio	Lower	Upper	
114	100		
63	21.1	0.0	40.8
88	16.7	0.0	32.8



Scan 717 (5.458 min): VX020119.D\data.ms (-735) (-)  
 Dibromofluoromethane  
 Concen: 48.39 ug/l  
 RT: 5.464 min Scan# 718  
 Delta R.T. 0.006 min  
 Lab File: VX020434.D  
 Acq: 29 Dec 2020 15:09

Tgt Ion:	113	Resp:	124006
Ion Ratio	Lower	Upper	
113	100		
111	102.8	81.9	122.9
192	21.1	16.7	25.1

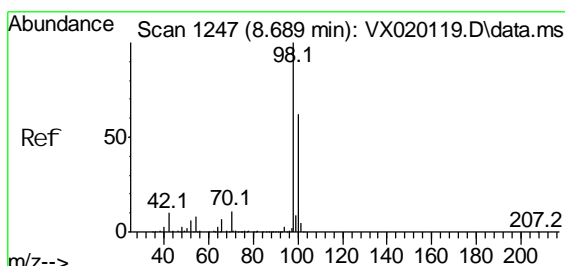
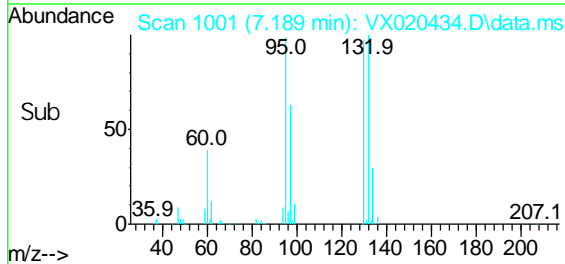
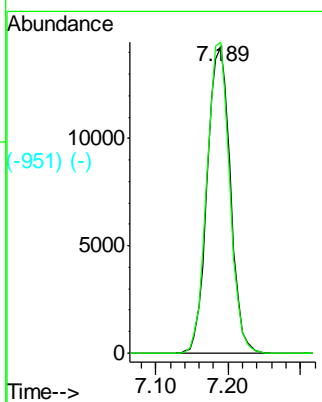
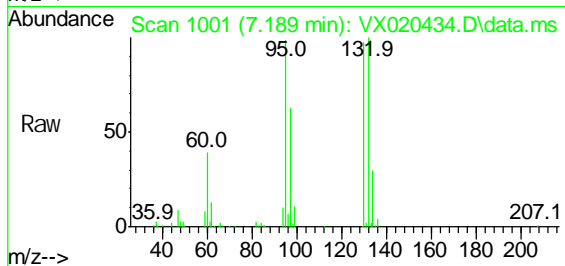




Tri chloroethene  
 Concen: 9.80 ug/l  
 RT: 7.189 min Scan# 1001  
 Delta R.T. 0.005 min  
 Lab File: VX020434.D  
 Acq: 29 Dec 2020 15:09

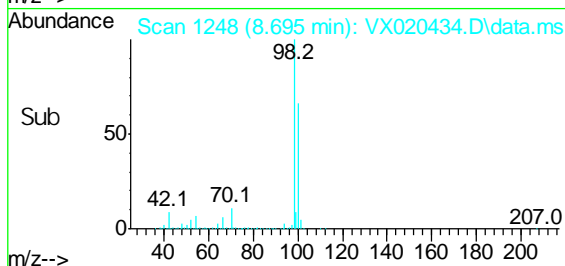
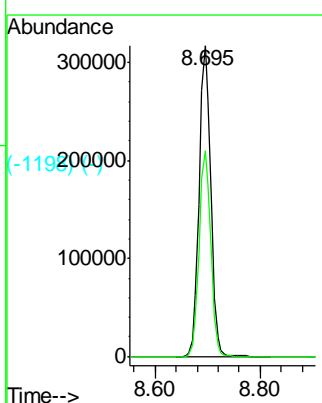
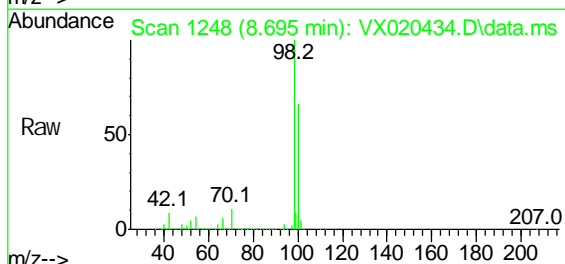
**Instrument :**  
 MSVOA\_X  
**Client Sampled :**  
 1015-MW-01(23)

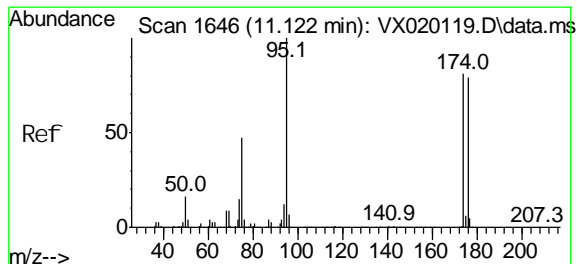
Tgt Ion: 130 Resp: 31229  
 Ion Ratio Lower Upper  
 130 100  
 95 101.5 0.0 198.0



Toluene-d8  
 Concen: 49.30 ug/l  
 RT: 8.695 min Scan# 1248  
 Delta R.T. 0.006 min  
 Lab File: VX020434.D  
 Acq: 29 Dec 2020 15:09

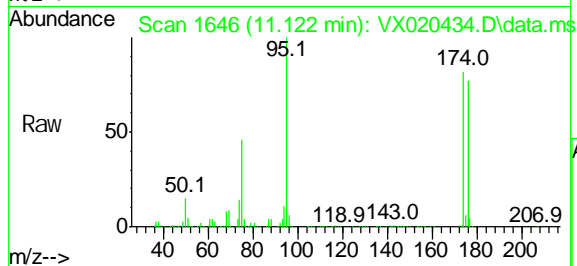
Tgt Ion: 98 Resp: 486321  
 Ion Ratio Lower Upper  
 98 100  
 100 66.3 51.9 77.9



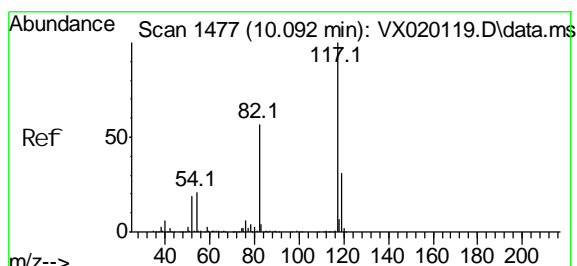
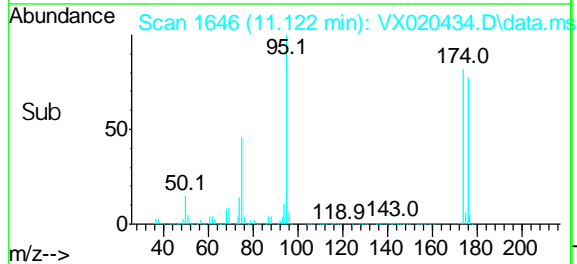
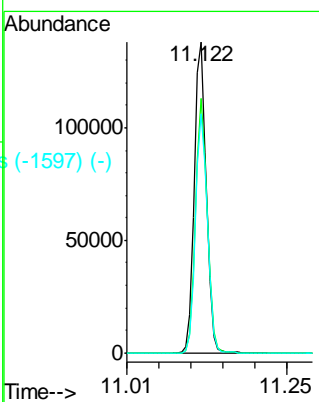


#639 (-)  
 4-Bromofluorobenzene  
 Concen: 46.00 ug/l  
 RT: 11.122 min Scan# 1646  
 Delta R.T. -0.000 min  
 Lab File: VX020434.D  
 Acq: 29 Dec 2020 15:09

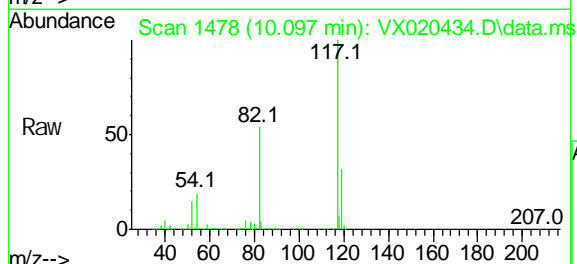
**Instrument :**  
 MSVOA\_X  
**Client Sampled :**  
 1015-MW-01(23)



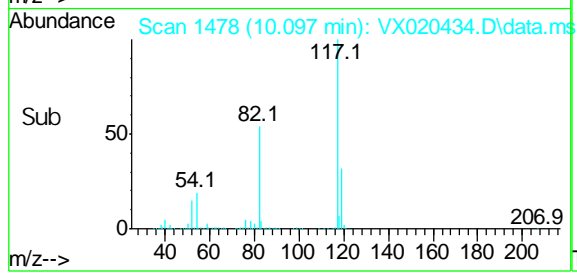
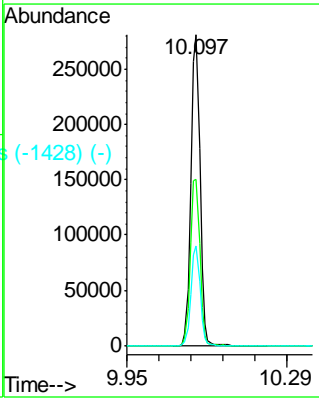
Tgt Ion: 95 Resp: 173669  
 Ion Ratio Lower Upper  
 95 100  
 174 79.7 0.0 154.6  
 176 76.2 0.0 155.8

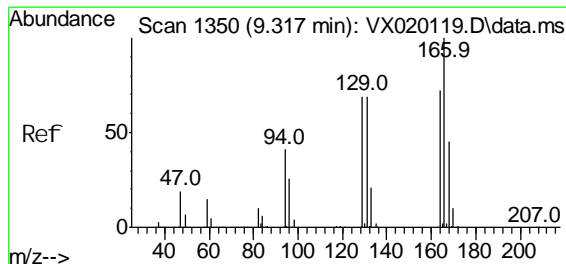


#640 (-)  
 Chlorobenzene-d5  
 Concen: 50.00 ug/l  
 RT: 10.097 min Scan# 1478  
 Delta R.T. 0.005 min  
 Lab File: VX020434.D  
 Acq: 29 Dec 2020 15:09



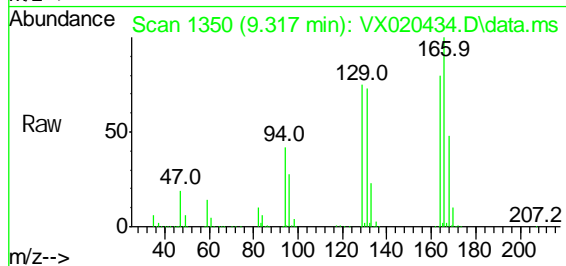
Tgt Ion: 117 Resp: 375131  
 Ion Ratio Lower Upper  
 117 100  
 82 53.6 47.4 71.2  
 119 31.9 26.6 39.8





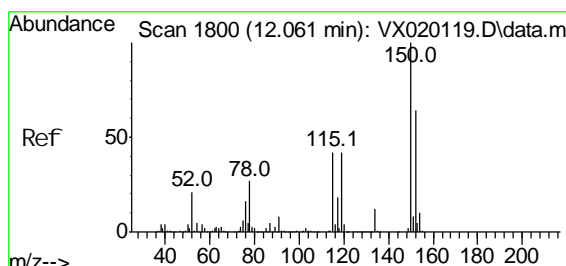
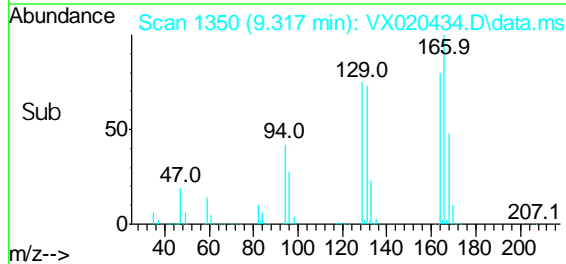
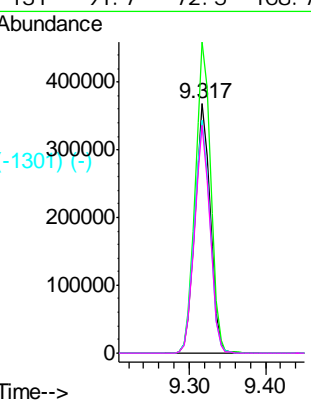
#642 (-)  
 Tetrachloroethene  
 Concen: 179.61 ug/l  
 RT: 9.317 min Scan# 1350  
 Delta R.T. C.OO min  
 Lab File: VX020434.D  
 Acq: 29 Dec 2020 15:09

**Instrument :**  
 MSVOA\_X  
**ClientSampled :**  
 1015-MW-01(23)

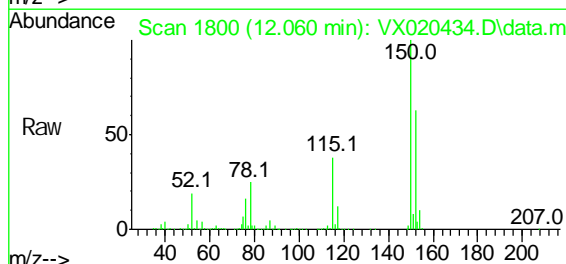


Tgt Ion: 164 Resp: 507661  
 Ion Ratio Lower Upper

164	100		
166	124.9	103.4	155.2
129	93.6	70.8	106.2
131	91.7	72.5	108.7



#724 (-)  
 1,4-Dichlorobenzene-d4  
 Concen: 50.00 ug/l  
 RT: 12.060 min Scan# 1800  
 Delta R.T. -0.001 min  
 Lab File: VX020434.D  
 Acq: 29 Dec 2020 15:09



Tgt Ion: 152 Resp: 160772  
 Ion Ratio Lower Upper

152	100		
115	59.7	41.1	123.3
150	157.7	0.0	349.0

