

Data Path : Z:\VOASRV\HPCHEM1\MSVOA_X\DATA\WX123119\
 Data File : VX014386.D
 Acq On : 31 Dec 2019 17:37
 Operator : JC/SP
 Sample : K6462-03ME 5X
 Misc : 5.04g/10mL/100uL/5.00mL/MSVOA_X/MEOH
 ALS Vial : 18 Sample Multiplier: 1

Instrument :
 MSVOA_X
 ClientSampleId :
 K500-3ME

Quant Time: Jan 01 03:20:24 2020
 Quant Method : Z:\VOASRV\HPCHEM1\MSVOA_X\METHOD\82X121319W.M
 Quant Title : SW846 8260
 QLast Update : Tue Dec 17 03:01:07 2019
 Response via : Initial Calibration

Internal Standards	R.T.	QIon	Response	Conc	Units	Dev(Min)
1) Pentafluorobenzene	5.65	168	509772	50.00	ug/l	0.00
34) 1,4-Difluorobenzene	6.85	114	777682	50.00	ug/l	0.00
63) Chlorobenzene-d5	10.11	117	722924	50.00	ug/l	0.00
72) 1,4-Dichlorobenzene-d4	12.07	152	381968	50.00	ug/l	0.00

System Monitoring Compounds

33) 1,2-Dichloroethane-d4	6.05	65	274232	47.47	ug/l	0.00
Spiked Amount	50.000		Recovery	=	94.94%	
35) Dibromofluoromethane	5.49	113	222694	47.11	ug/l	0.00
Spiked Amount	50.000		Recovery	=	94.22%	
50) Toluene-d8	8.71	98	941582	51.16	ug/l	0.00
Spiked Amount	50.000		Recovery	=	102.32%	
62) 4-Bromofluorobenzene	11.14	95	358601	53.30	ug/l	0.00
Spiked Amount	50.000		Recovery	=	106.60%	

Target Compounds

						Qvalue
5) Bromomethane	1.63	94	2140	0.467	ug/l #	77
6) Chloroethane	1.59	64	23146	5.807	ug/l #	80
10) Methyl Iodide	2.50	142	695	2.724	ug/l #	38
11) Tert butyl alcohol	3.01	59	14083	11.281	ug/l #	80
13) Acrolein	2.26	56	391	0.547	ug/l #	14
16) Acetone	2.44	43	11187	2.983	ug/l	90
17) Carbon Disulfide	2.56	76	1776	0.879	ug/l #	83
20) Methylene Chloride	2.85	84	2259	0.382	ug/l #	81
25) 2-Butanone	4.67	43	4416	0.955	ug/l #	87
28) Bromochloromethane	5.01	49	492	0.584	ug/l #	31
36) 1,1-Dichloropropene	5.65	75	35130	4.923	ug/l #	51
38) Carbon Tetrachloride	5.64	117	44490	6.844	ug/l #	15
39) Methylcyclohexane	7.45	83	17306	1.964	ug/l	94
48) Methyl methacrylate	7.73	41	1542	0.241	ug/l #	36
49) 1,4-Dioxane	7.73	88	209	1.608	ug/l #	74
51) 4-Methyl-2-Pentanone	8.65	43	4418	0.539	ug/l #	79
52) Toluene	8.78	92	7040	0.507	ug/l	86
55) 1,1,2-Trichloroethane	9.16	97	28903	5.197	ug/l #	19
56) Ethyl methacrylate	9.16	69	6579	0.753	ug/l #	1
59) 2-Hexanone	9.26	43	2623	0.398	ug/l	67
67) Ethyl Benzene	10.25	91	43428	1.643	ug/l	95
68) m/p-Xylenes	10.35	106	424127	41.728	ug/l	99
69) o-Xylene	10.70	106	223581	22.429	ug/l	100
70) Styrene	10.70	104	12411	0.736	ug/l #	1
73) Isopropylbenzene	11.01	105	33113	1.231	ug/l	100
74) N-amyl acetate	10.91	43	54832	4.350	ug/l #	1
75) 1,1,2,2-Tetrachloroethane	11.27	83	15574	1.670	ug/l #	26
76) 1,2,3-Trichloropropane	11.43	75	10837	1.307	ug/l #	1
78) n-propylbenzene	11.35	91	104100	3.451	ug/l	100
79) 2-Chlorotoluene	11.43	91	162471	8.860	ug/l #	41
80) 1,3,5-Trimethylbenzene	11.50	105	523625	23.135	ug/l	99
81) trans-1,4-Dichloro-2-buten	11.14	75	172184	58.607	ug/l #	14
82) 4-Chlorotoluene	11.50	91	56040	2.635	ug/l #	43
83) tert-Butylbenzene	11.81	119	213705	9.702	ug/l #	63

Data Path : Z:\VOASRV\HPCHEM1\MSVOA_X\DATA\VX123119\
 Data File : VX014386.D
 Acq On : 31 Dec 2019 17:37
 Operator : JC/SP
 Sample : K6462-03ME 5X
 Misc : 5.04g/10mL/100uL/5.00mL/MSVOA_X/MEOH
 ALS Vial : 18 Sample Multiplier: 1

Instrument :
 MSVOA_X
 ClientSampleId :
 K500-3ME

Quant Time: Jan 01 03:20:24 2020
 Quant Method : Z:\VOASRV\HPCHEM1\MSVOA_X\METHOD\82X121319W.M
 Quant Title : SW846 8260
 QLast Update : Tue Dec 17 03:01:07 2019
 Response via : Initial Calibration

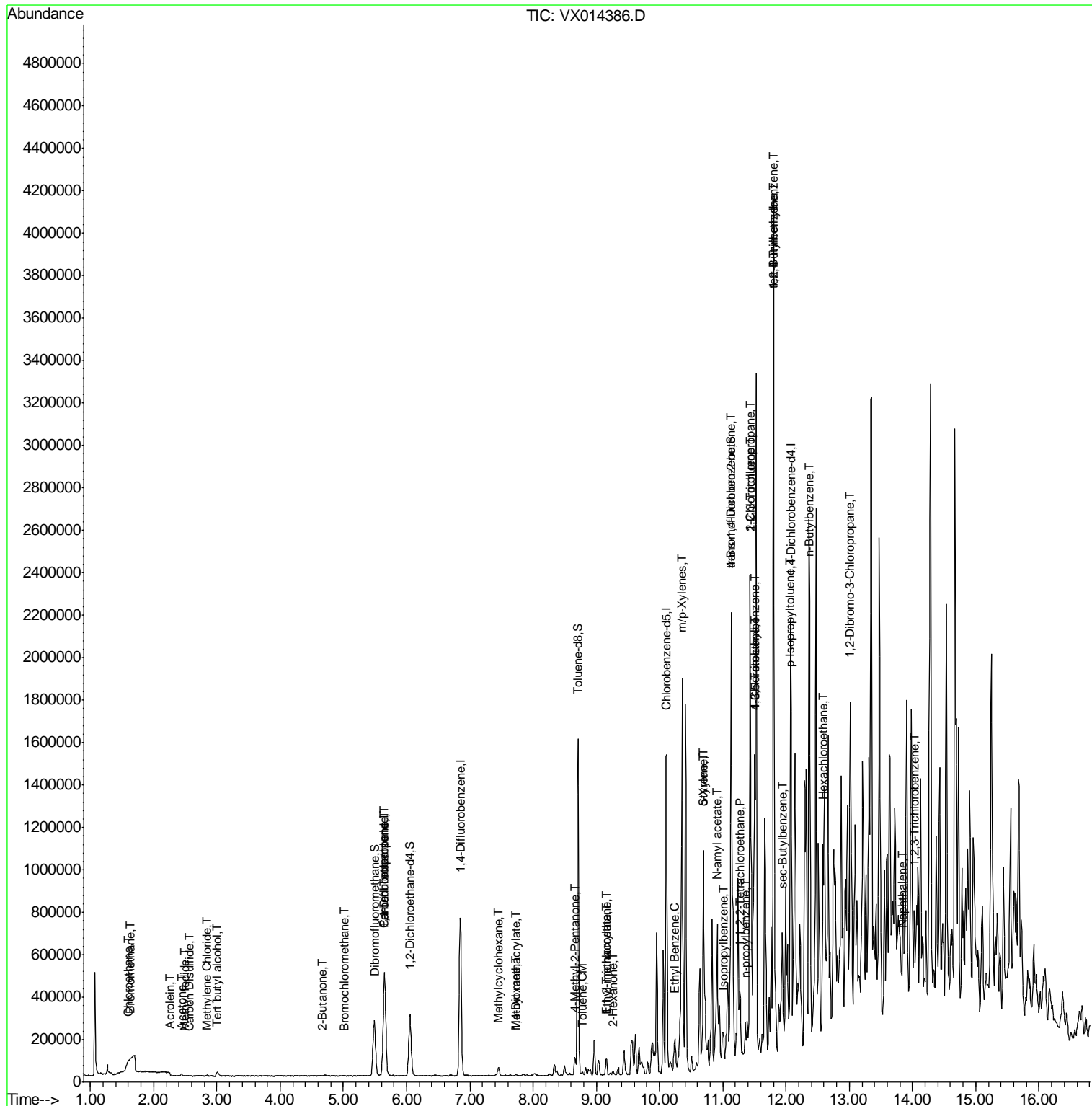
Internal Standards	R.T.	QIon	Response	Conc	Units	Dev(Min)
84) 1,2,4-Trimethylbenzene	11.80	105	1694977	74.780	ug/l	99
85) sec-Butylbenzene	11.94	105	88551	3.405	ug/l	81
86) p-Isopropyltoluene	12.06	119	59044	2.482	ug/l	99
89) n-Butylbenzene	12.38	91	250463	12.341	ug/l #	22
90) Hexachloroethane	12.58	117	33409	7.820	ug/l #	8
92) 1,2-Dibromo-3-Chloropropan	13.01	75	4423	2.144	ug/l #	15
95) Naphthalene	13.83	128	116368	4.668	ug/l #	88
96) 1,2,3-Trichlorobenzene	14.03	180	7915	0.945	ug/l #	1

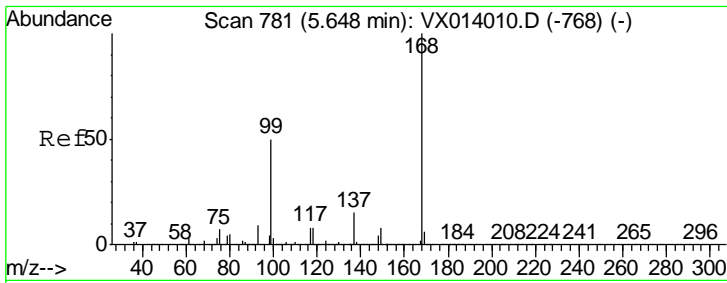
(#) = qualifier out of range (m) = manual integration (+) = signals summed

Data Path : Z:\VOASRV\HPCHEM1\MSVOA_X\DATA\VX123119\
 Data File : VX014386.D
 Acq On : 31 Dec 2019 17:37
 Operator : JC/SP
 Sample : K6462-03ME 5X
 Misc : 5.04g/10mL/100uL/5.00mL/MSVOA_X/MEOH
 ALS Vial : 18 Sample Multiplier: 1

Instrument :
 MSVOA_X
 Client Sampled :
 K500-3ME

Quant Time: Jan 01 03:20:24 2020
 Quant Method : Z:\VOASRV\HPCHEM1\MSVOA_X\METHOD\82X121319W.M
 Quant Title : SW846 8260
 QLast Update : Tue Dec 17 03:01:07 2019
 Response via : Initial Calibration

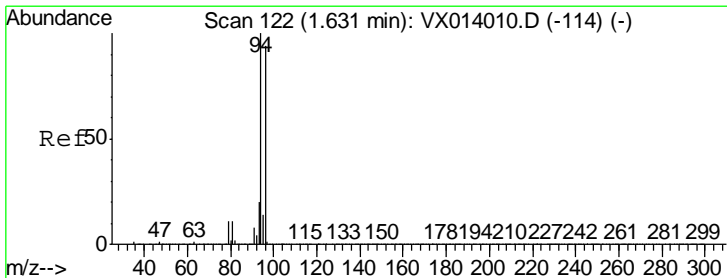
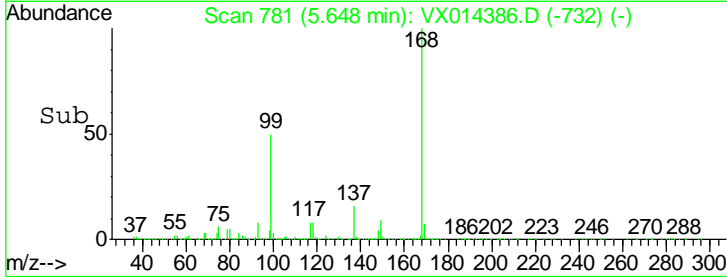
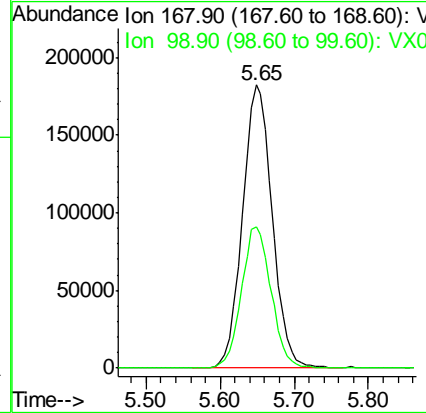
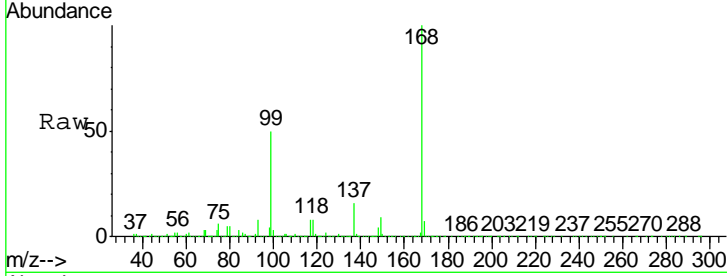




#1
 Pentafluorobenzene
 Concen: 50.000 ug/l
 RT: 5.65 min Scan# 781
 Delta R.T. 0.00 min
 Lab File: VX014386.D
 Acq: 31 Dec 2019 17:37

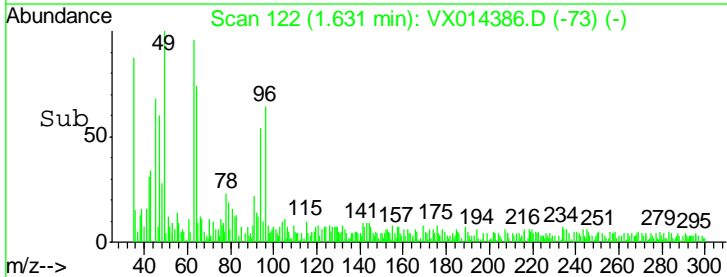
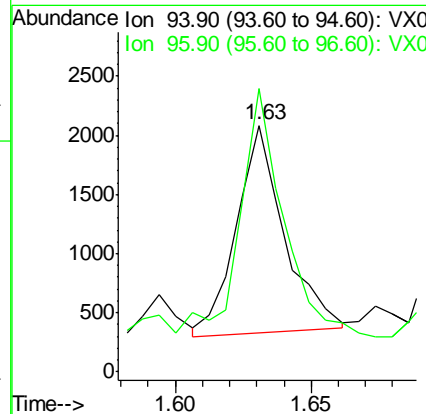
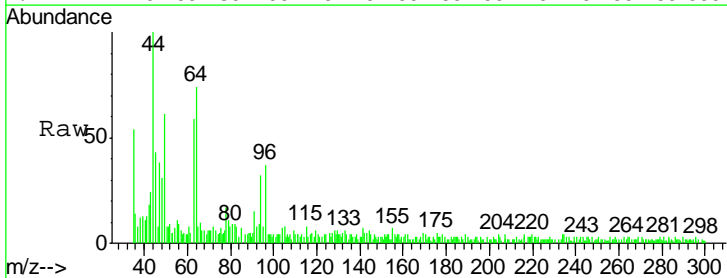
Instrument :
 MSVOA_X
 ClientSampled :
 K500-3ME

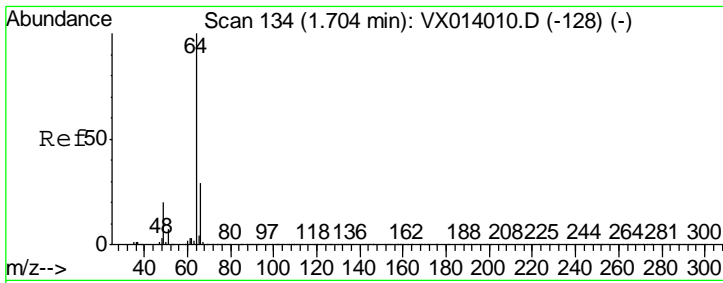
Tgt Ion: 168 Resp: 509772
 Ion Ratio Lower Upper
 168 100
 99 49.9 40.3 60.5



#5
 Bromomethane
 Concen: 0.467 ug/l
 RT: 1.63 min Scan# 122
 Delta R.T. 0.00 min
 Lab File: VX014386.D
 Acq: 31 Dec 2019 17:37

Tgt Ion: 94 Resp: 2140
 Ion Ratio Lower Upper
 94 100
 96 115.8 75.2 112.8#

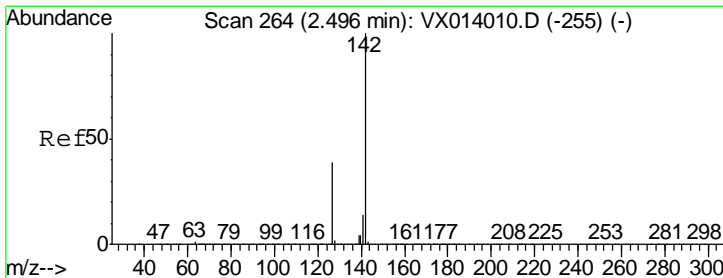
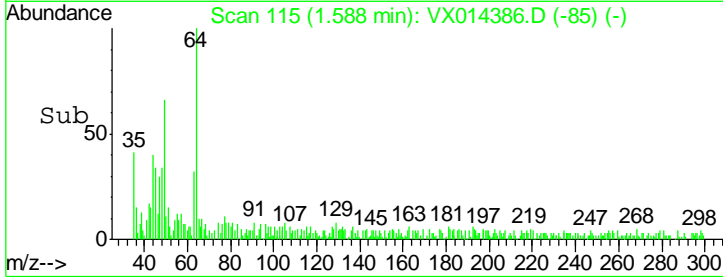
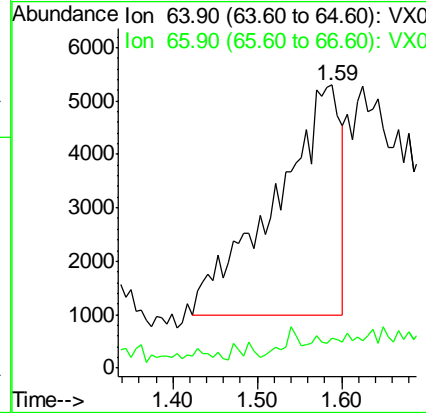
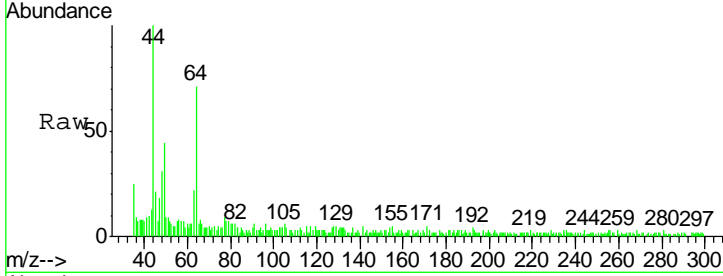




#6
 Chloroethane
 Concen: 5.807 ug/l
 RT: 1.59 min Scan# 115
 Delta R.T. -0.12 min
 Lab File: VX014386.D
 Acq: 31 Dec 2019 17:37

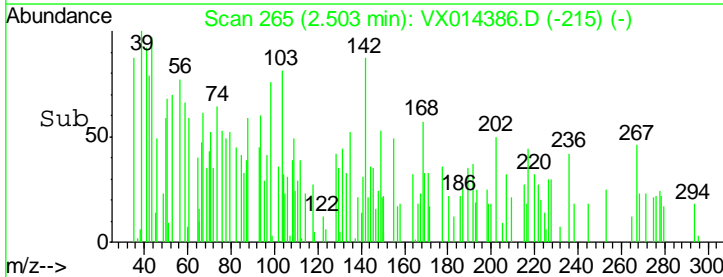
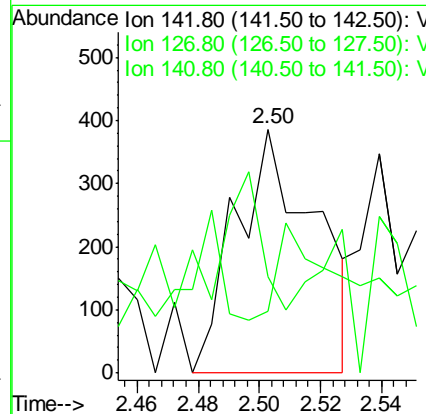
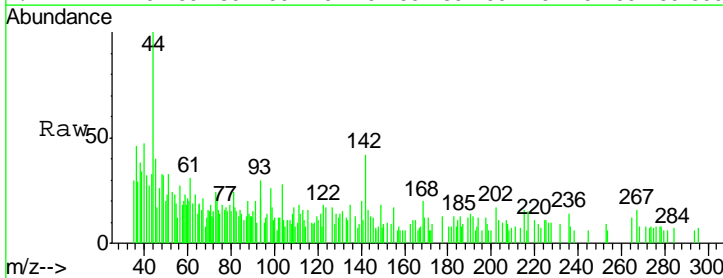
Instrument :
 MSVOA_X
 ClientSampled :
 K500-3ME

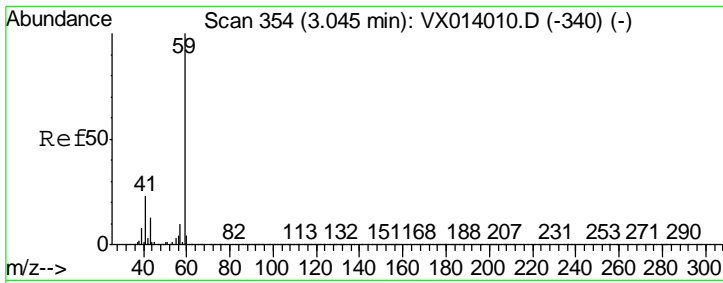
Tgt Ion: 64 Resp: 23146
 Ion Ratio Lower Upper
 64 100
 66 18.8 23.4 35.2#



#10
 Methyl Iodide
 Concen: 2.724 ug/l
 RT: 2.50 min Scan# 265
 Delta R.T. 0.01 min
 Lab File: VX014386.D
 Acq: 31 Dec 2019 17:37

Tgt Ion: 142 Resp: 695
 Ion Ratio Lower Upper
 142 100
 127 26.0 31.6 47.4#
 141 84.3 11.6 17.4#

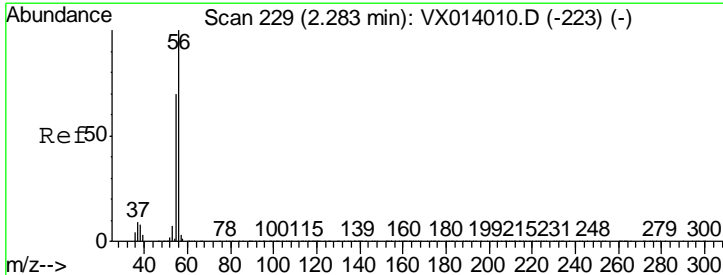
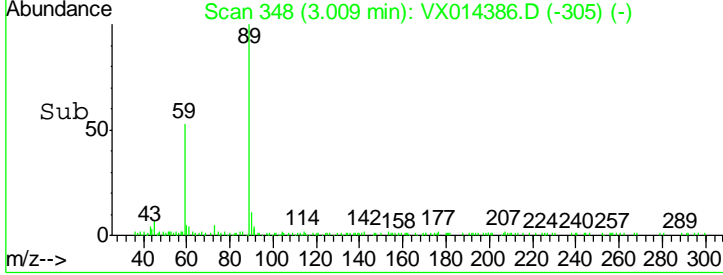
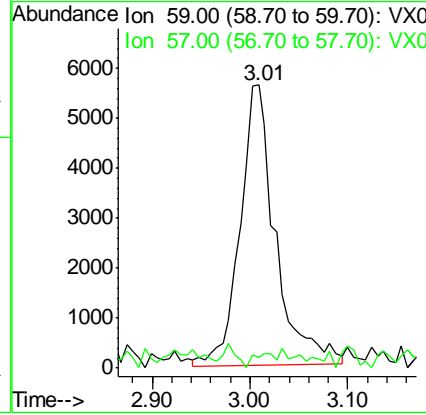
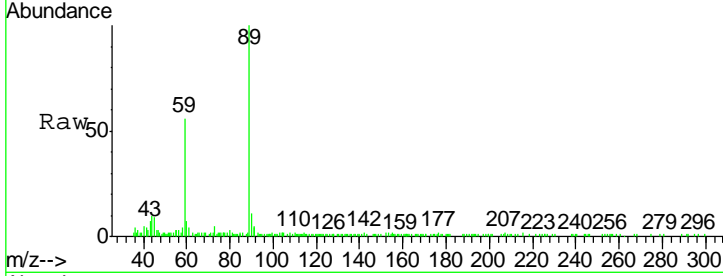




#11
 Tert butyl alcohol
 Concen: 11.281 ug/l
 RT: 3.01 min Scan# 348
 Delta R.T. -0.04 min
 Lab File: VX014386.D
 Acq: 31 Dec 2019 17:37

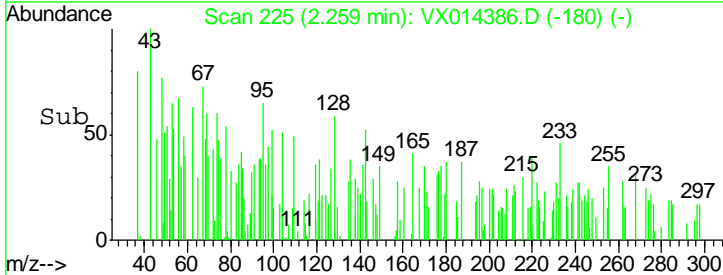
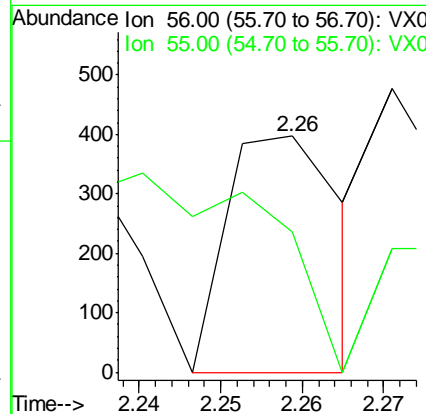
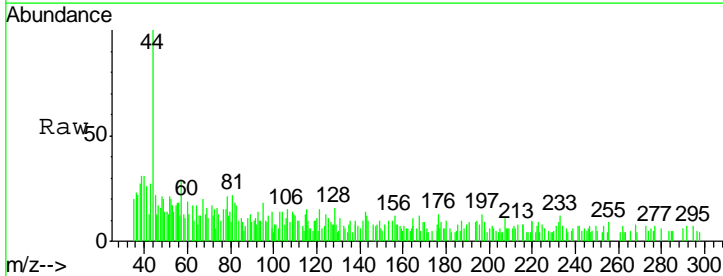
Instrument :
 MSVOA_X
ClientSampled :
 K500-3ME

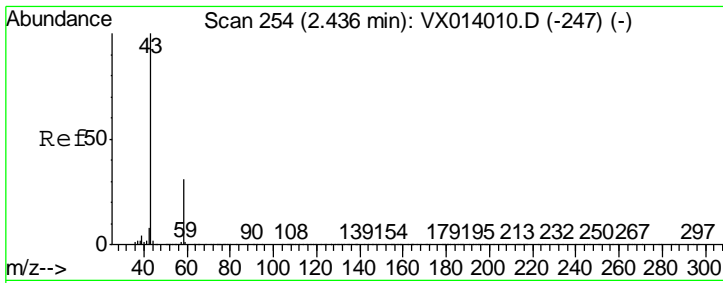
Tgt Ion	Resp	Lower	Upper
59	14083		
57	3.2	8.4	12.6#



#13
 Acrolein
 Concen: 0.547 ug/l
 RT: 2.26 min Scan# 225
 Delta R.T. -0.02 min
 Lab File: VX014386.D
 Acq: 31 Dec 2019 17:37

Tgt Ion	Resp	Lower	Upper
56	391		
55	0.0	56.9	85.3#

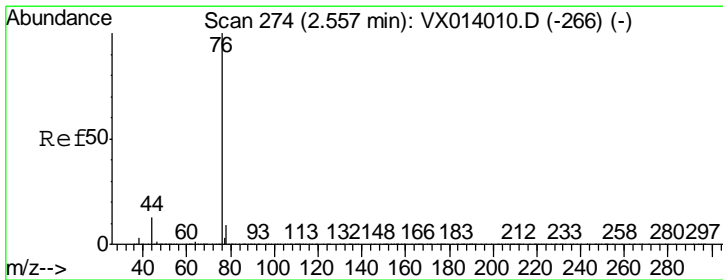
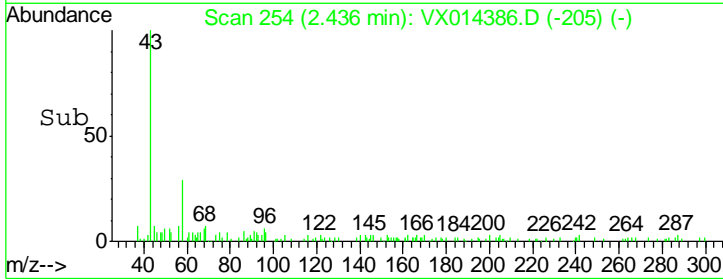
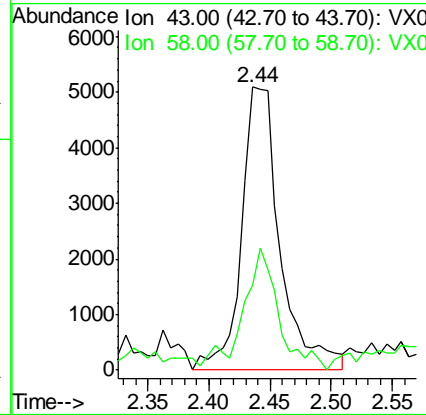
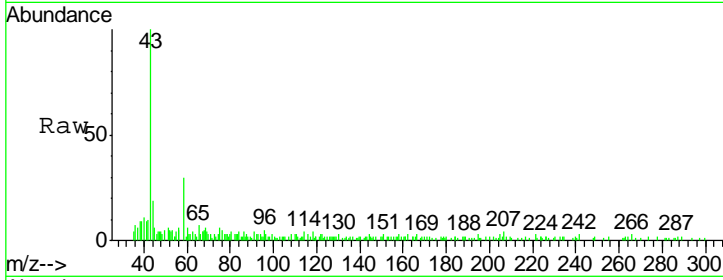




#16
 Acetone
 Concen: 2.983 ug/l
 RT: 2.44 min Scan# 254
 Delta R.T. 0.00 min
 Lab File: VX014386.D
 Acq: 31 Dec 2019 17:37

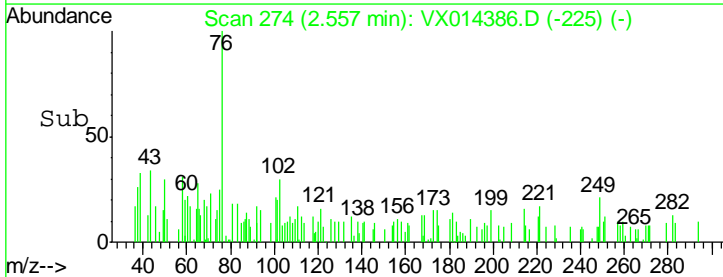
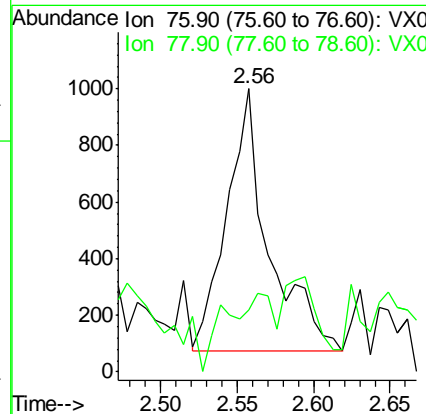
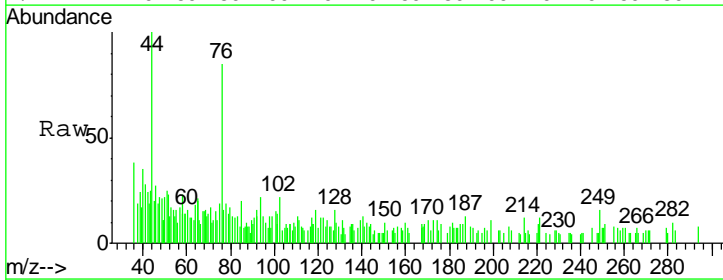
Instrument :
 MSVOA_X
ClientSampled :
 K500-3ME

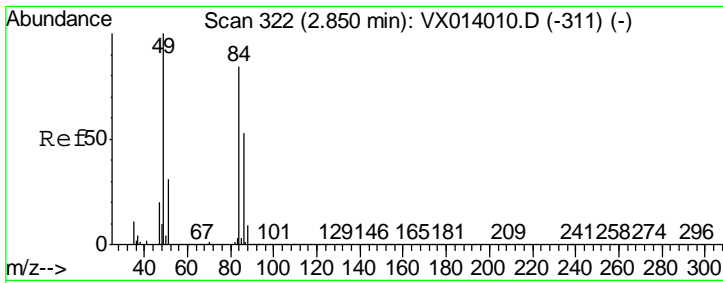
Tgt Ion: 43 Resp: 11187
 Ion Ratio Lower Upper
 43 100
 58 25.7 24.9 37.3



#17
 Carbon Disulfide
 Concen: 0.879 ug/l
 RT: 2.56 min Scan# 274
 Delta R.T. 0.00 min
 Lab File: VX014386.D
 Acq: 31 Dec 2019 17:37

Tgt Ion: 76 Resp: 1776
 Ion Ratio Lower Upper
 76 100
 78 15.3 7.2 10.8#

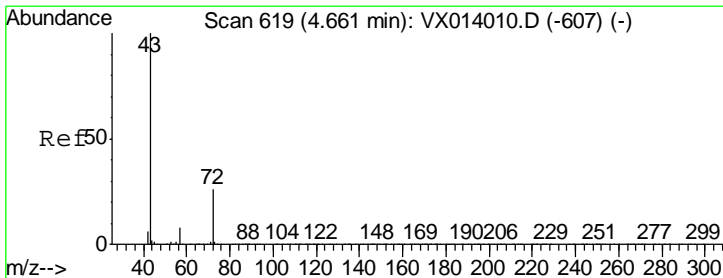
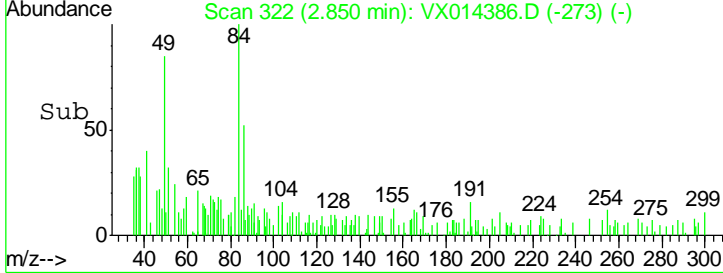
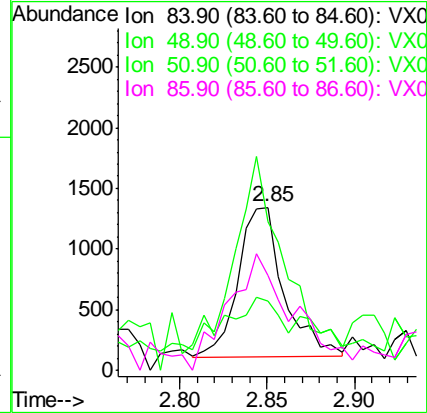
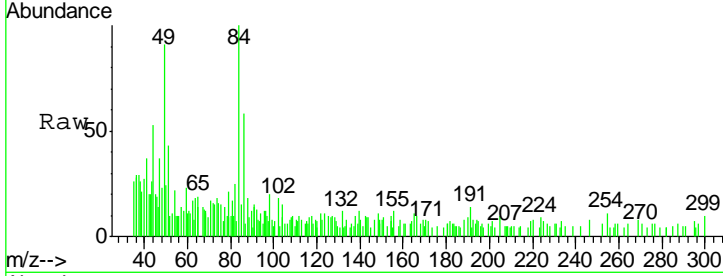




#20
 Methylene Chloride
 Concen: 0.382 ug/l
 RT: 2.85 min Scan# 322
 Delta R.T. 0.00 min
 Lab File: VX014386.D
 Acq: 31 Dec 2019 17:37

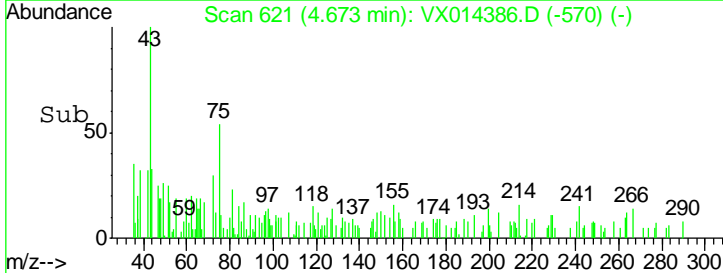
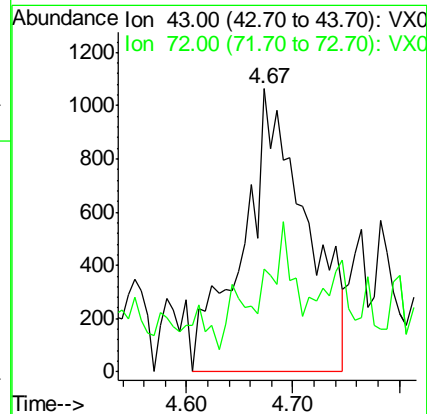
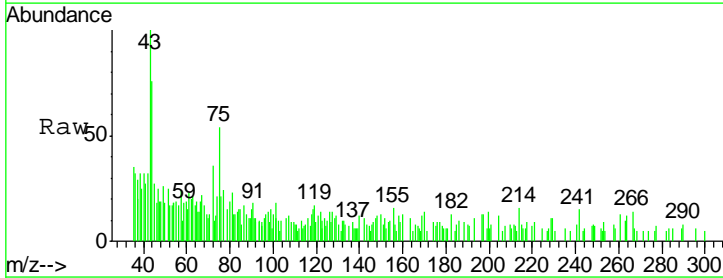
Instrument :
 MSVOA_X
 ClientSampled :
 K500-3ME

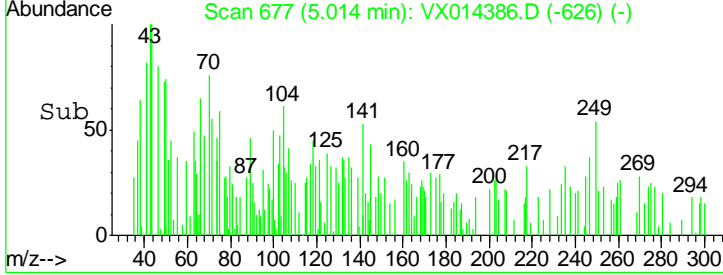
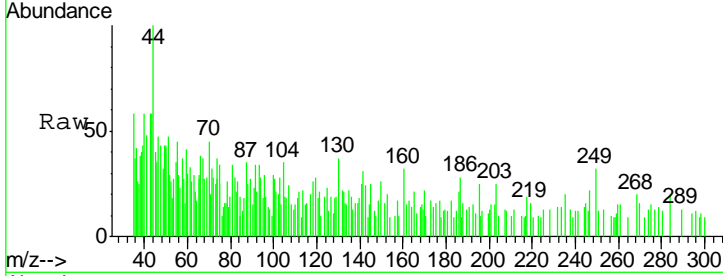
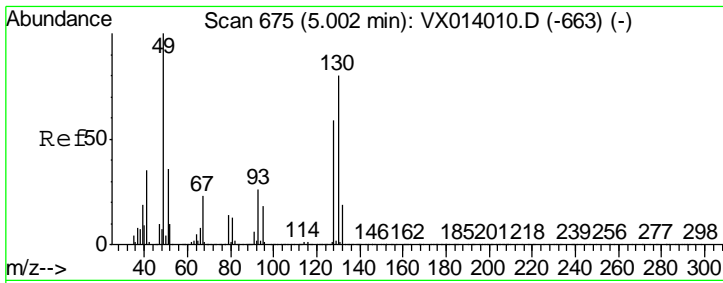
Tgt Ion	Resp	Lower	Upper
84	100		
49	85.8	95.8	143.6#
51	30.0	29.8	44.8
86	63.6	50.8	76.2



#25
 2-Butanone
 Concen: 0.955 ug/l
 RT: 4.67 min Scan# 621
 Delta R.T. 0.01 min
 Lab File: VX014386.D
 Acq: 31 Dec 2019 17:37

Tgt Ion	Resp	Lower	Upper
43	100		
72	19.7	21.0	31.4#

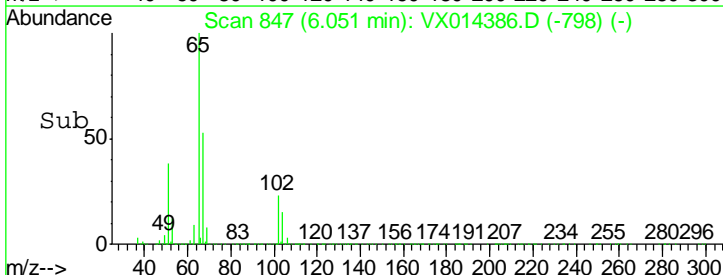
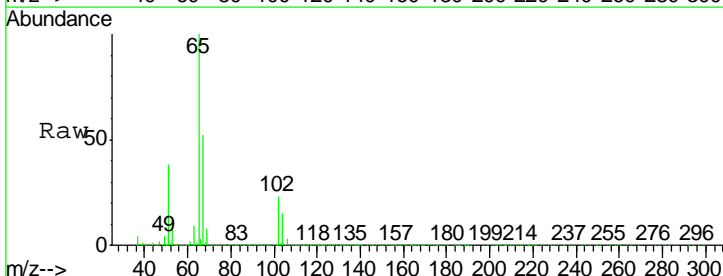
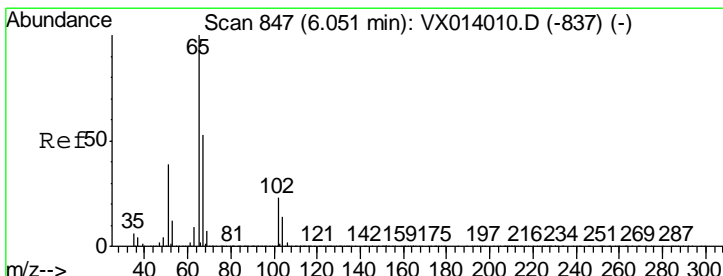
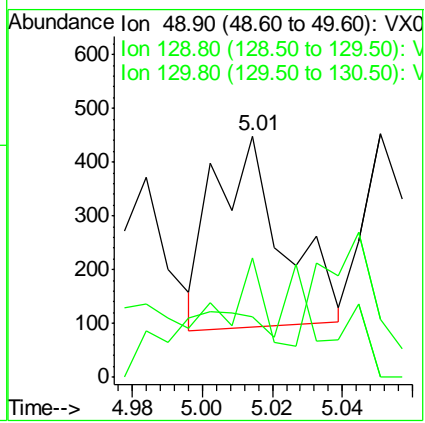




#28
 Bromochloromethane
 Concen: 0.584 ug/l
 RT: 5.01 min Scan# 677
 Delta R.T. 0.01 min
 Lab File: VX014386.D
 Acq: 31 Dec 2019 17:37

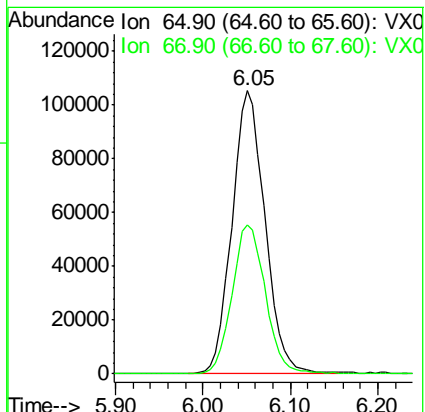
Instrument : MSVOA_X
 ClientSampled : K500-3ME

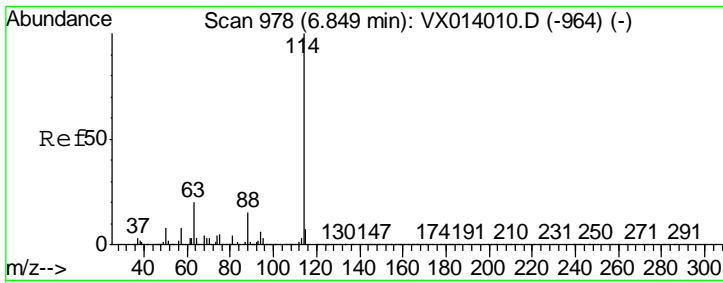
Tgt Ion	Resp	Lower	Upper
49	100		
129	45.5	0.0	5.0#
130	21.5	64.6	97.0#



#33
 1,2-Dichloroethane-d4
 Concen: 47.465 ug/l
 RT: 6.05 min Scan# 847
 Delta R.T. 0.00 min
 Lab File: VX014386.D
 Acq: 31 Dec 2019 17:37

Tgt Ion	Resp	Lower	Upper
65	100		
67	53.0	0.0	106.4

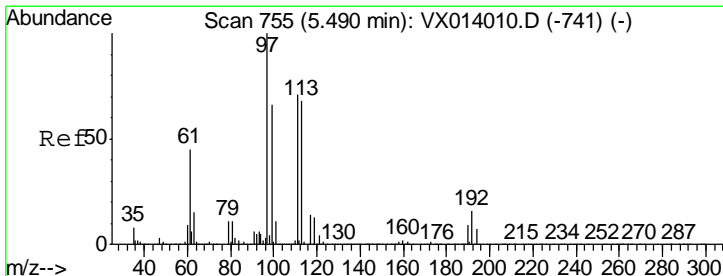
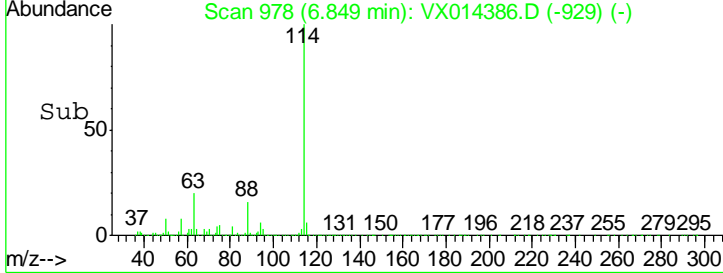
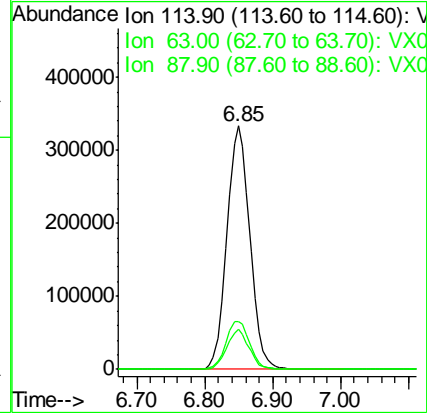
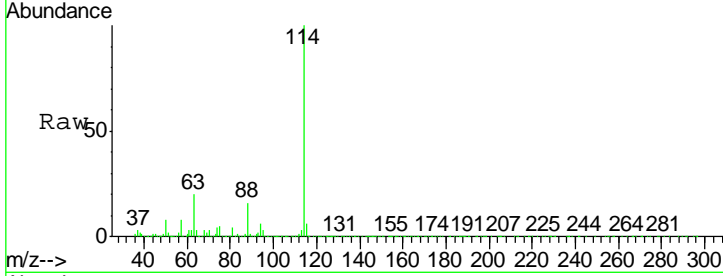




#34
 1,4-Difluorobenzene
 Concen: 50.000 ug/l
 RT: 6.85 min Scan# 978
 Delta R.T. 0.00 min
 Lab File: VX014386.D
 Acq: 31 Dec 2019 17:37

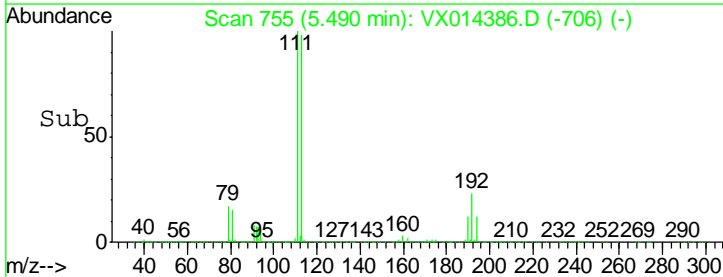
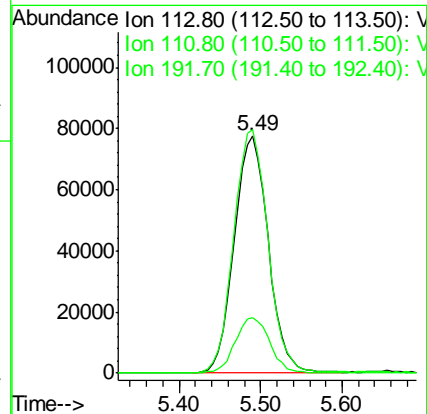
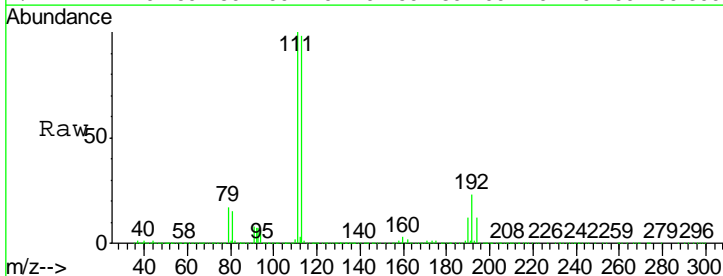
Instrument :
 MSVOA_X
 ClientSampled :
 K500-3ME

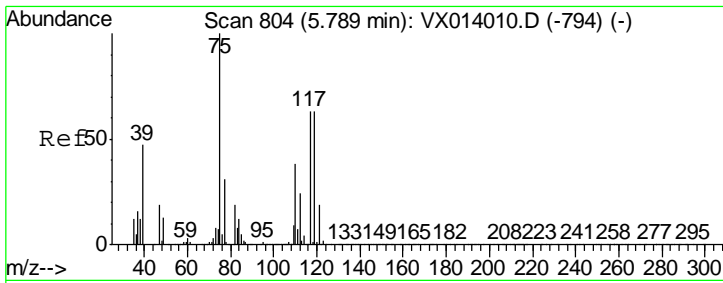
Tgt Ion	Resp	Lower	Upper
114	777682		
63	19.7	0.0	40.8
88	16.3	0.0	30.4



#35
 Dibromofluoromethane
 Concen: 47.107 ug/l
 RT: 5.49 min Scan# 755
 Delta R.T. 0.00 min
 Lab File: VX014386.D
 Acq: 31 Dec 2019 17:37

Tgt Ion	Resp	Lower	Upper
113	222694		
111	103.3	82.0	123.0
192	23.6	19.3	28.9

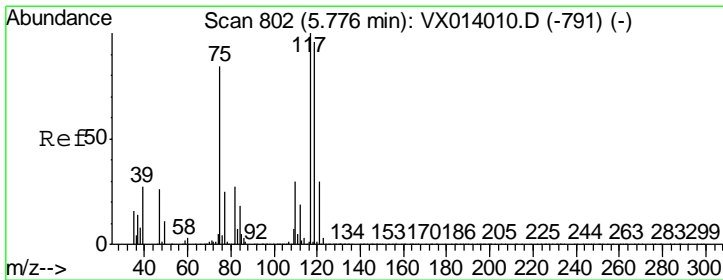
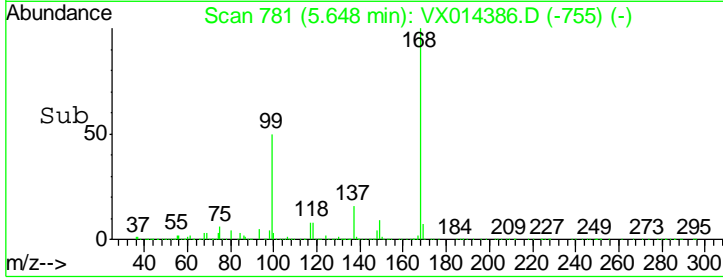
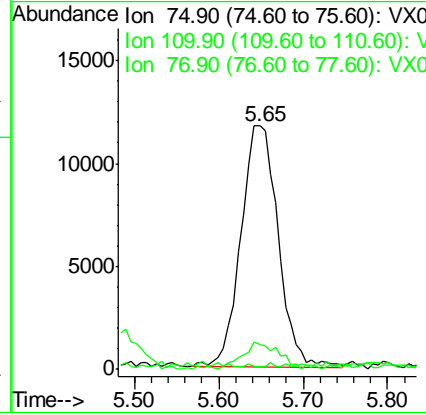
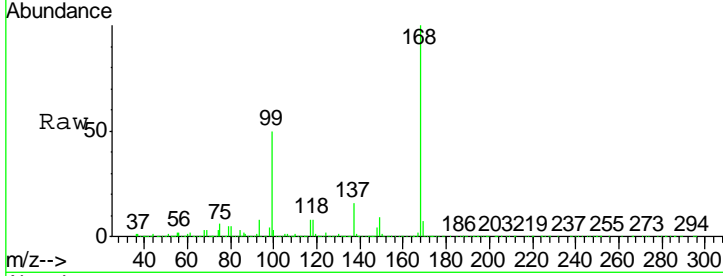




#36
 1,1-Dichloropropene
 Concen: 4.923 ug/l
 RT: 5.65 min Scan# 781
 Delta R.T. -0.14 min
 Lab File: VX014386.D
 Acq: 31 Dec 2019 17:37

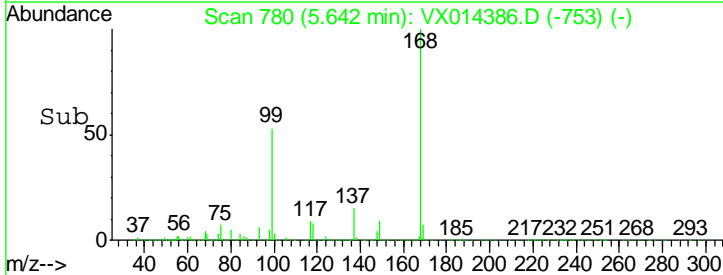
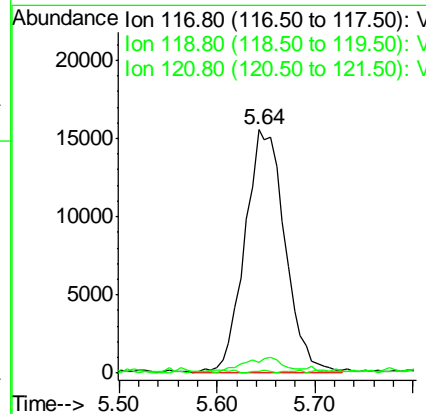
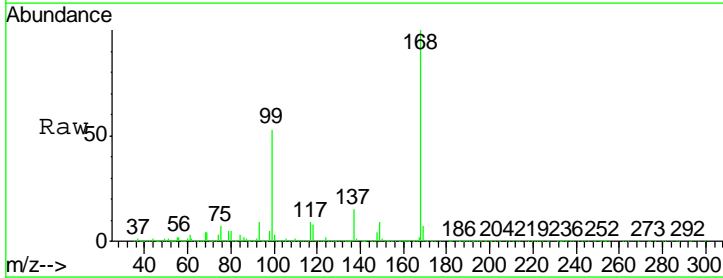
Instrument :
 MSVOA_X
 ClientSampled :
 K500-3ME

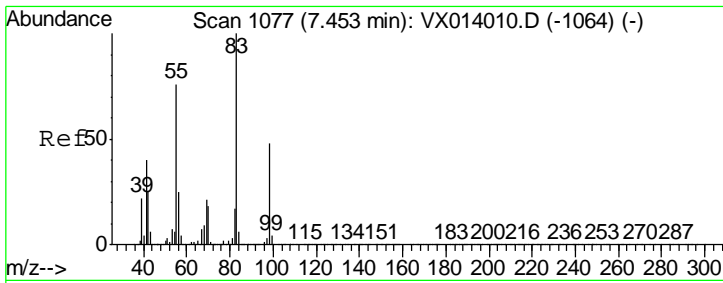
Tgt Ion	Resp	Lower	Upper
75	35130		
110	10.7	18.3	54.9#
77	0.3	24.8	37.2#



#38
 Carbon Tetrachloride
 Concen: 6.844 ug/l
 RT: 5.64 min Scan# 780
 Delta R.T. -0.13 min
 Lab File: VX014386.D
 Acq: 31 Dec 2019 17:37

Tgt Ion	Resp	Lower	Upper
117	44490		
119	3.7	76.2	114.4#
121	0.2	23.6	35.4#

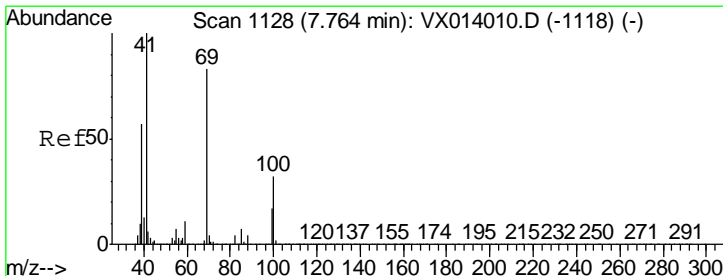
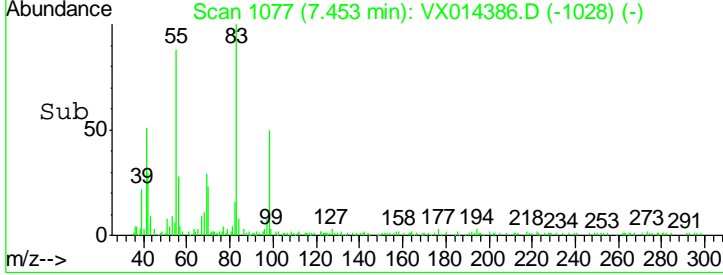
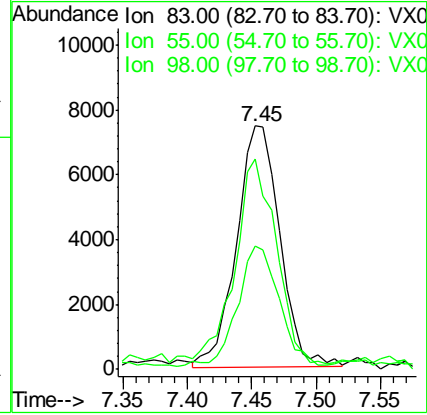
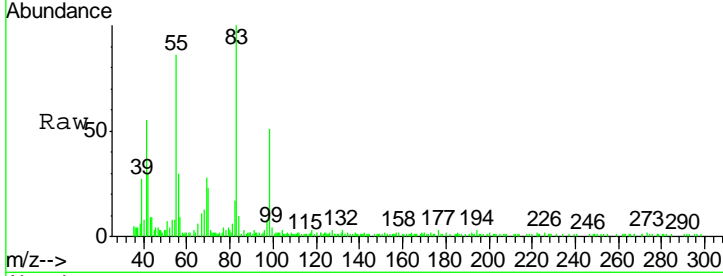




#39
 Methylcyclohexane
 Concen: 1.964 ug/l
 RT: 7.45 min Scan# 1077
 Delta R.T. 0.00 min
 Lab File: VX014386.D
 Acq: 31 Dec 2019 17:37

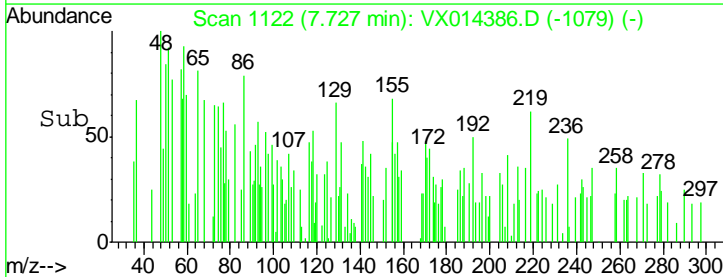
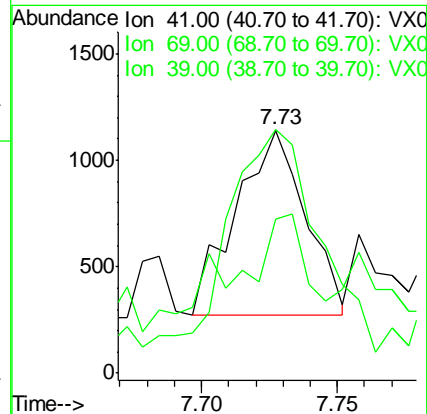
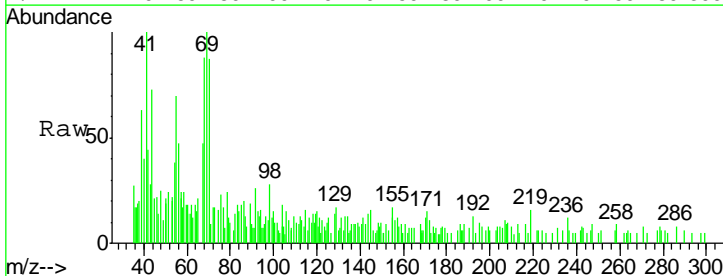
Instrument :
 MSVOA_X
 ClientSampled :
 K500-3ME

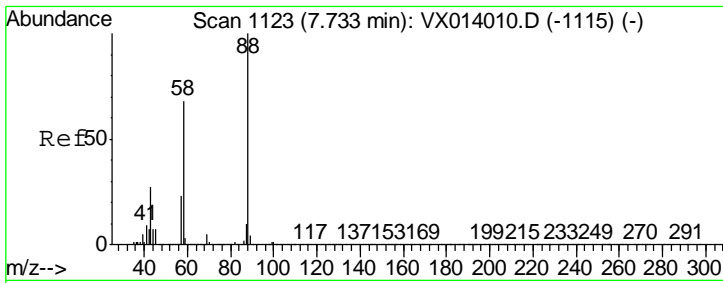
Tgt Ion	Resp	Lower	Upper
83	17306		
55	84.0	61.0	91.6
98	48.5	38.6	57.8



#48
 Methyl methacrylate
 Concen: 0.241 ug/l
 RT: 7.73 min Scan# 1122
 Delta R.T. -0.04 min
 Lab File: VX014386.D
 Acq: 31 Dec 2019 17:37

Tgt Ion	Resp	Lower	Upper
41	1542		
69	152.1	65.8	98.6#
39	25.2	44.6	67.0#

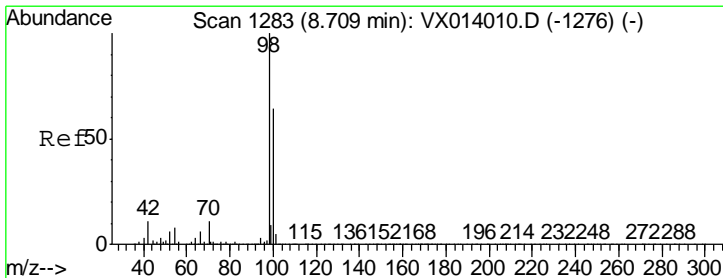
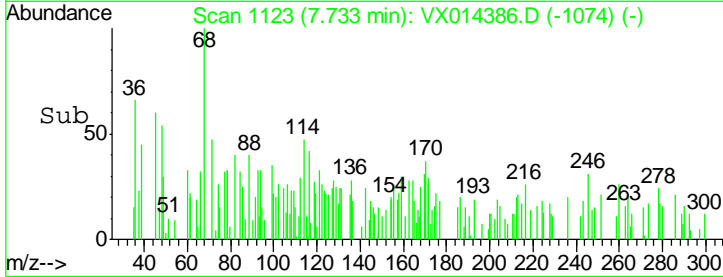
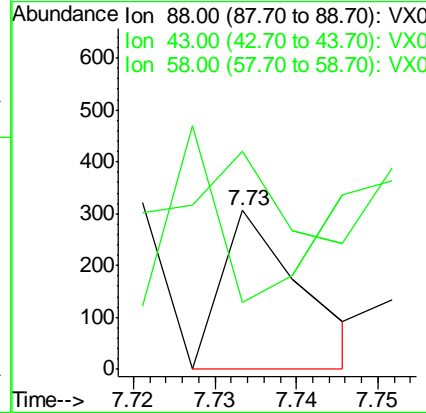
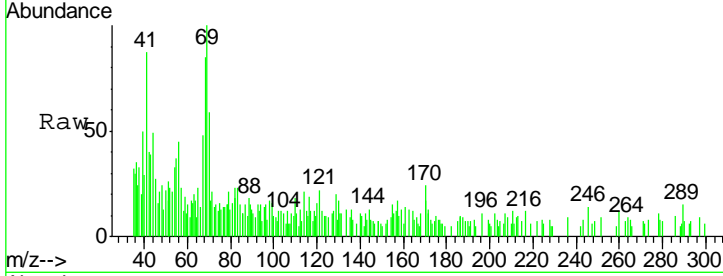




#49
 1,4-Dioxane
 Concen: 1.608 ug/l
 RT: 7.73 min Scan# 1123
 Delta R.T. 0.00 min
 Lab File: VX014386.D
 Acq: 31 Dec 2019 17:37

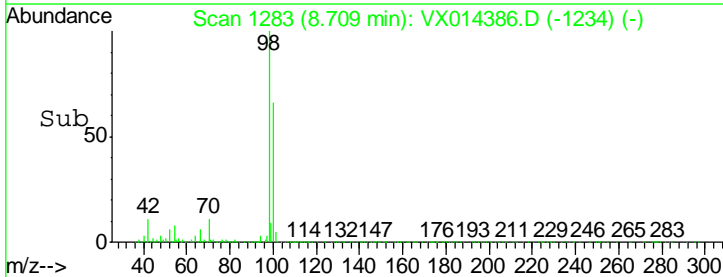
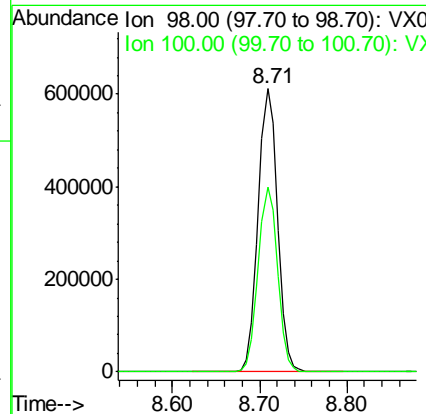
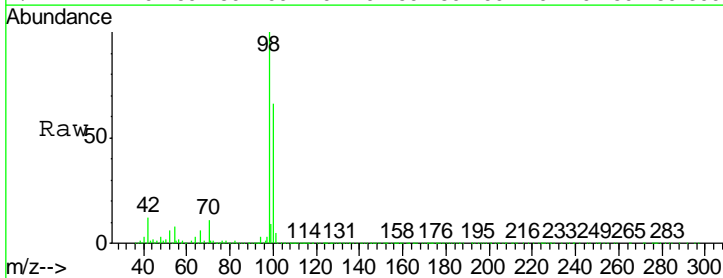
Instrument :
 MSVOA_X
 ClientSampled :
 K500-3ME

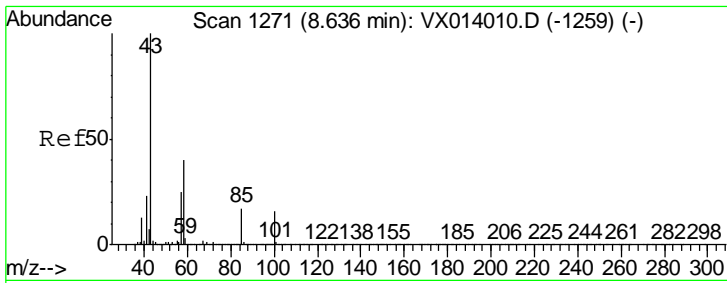
Tgt Ion	Resp	Lower	Upper
88	100		
43	0.0	26.5	39.7#
58	62.2	56.8	85.2



#50
 Toluene-d8
 Concen: 51.159 ug/l
 RT: 8.71 min Scan# 1283
 Delta R.T. 0.00 min
 Lab File: VX014386.D
 Acq: 31 Dec 2019 17:37

Tgt Ion	Resp	Lower	Upper
98	100		
100	65.3	52.9	79.3

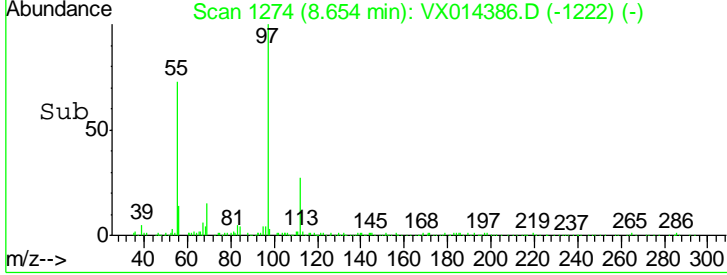
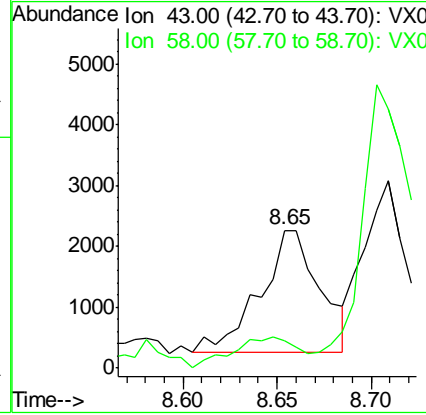
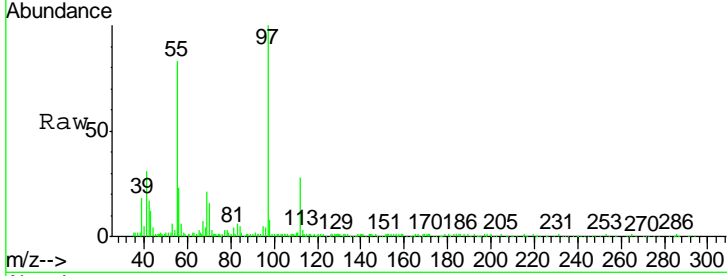




#51
 4-Methyl-2-Pentanone
 Concen: 0.539 ug/l
 RT: 8.65 min Scan# 1274
 Delta R.T. 0.02 min
 Lab File: VX014386.D
 Acq: 31 Dec 2019 17:37

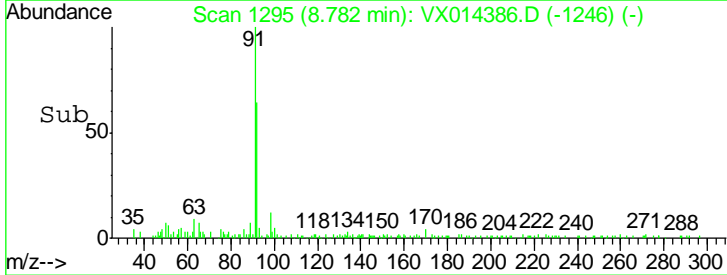
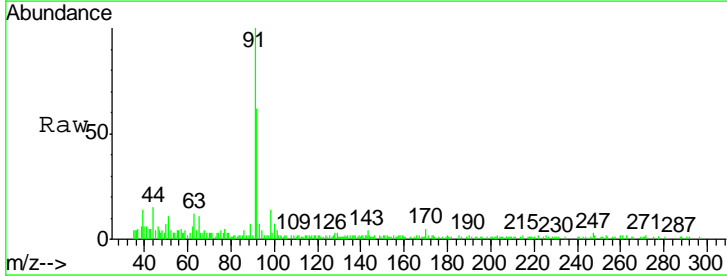
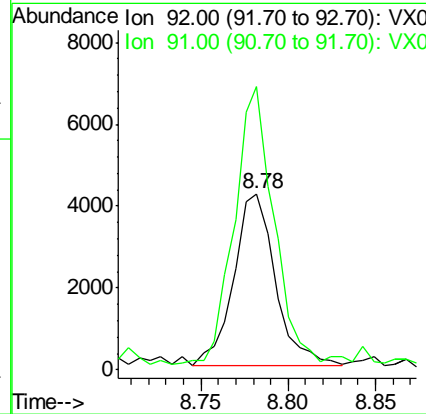
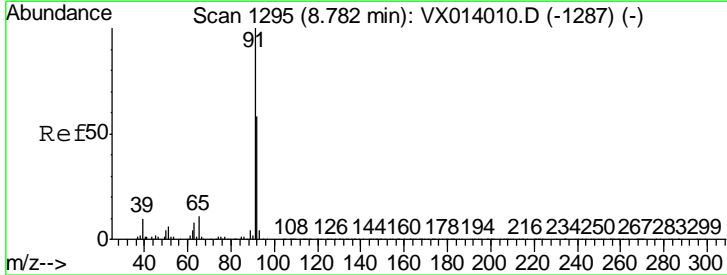
Instrument : MSVOA_X
 ClientSampled : K500-3ME

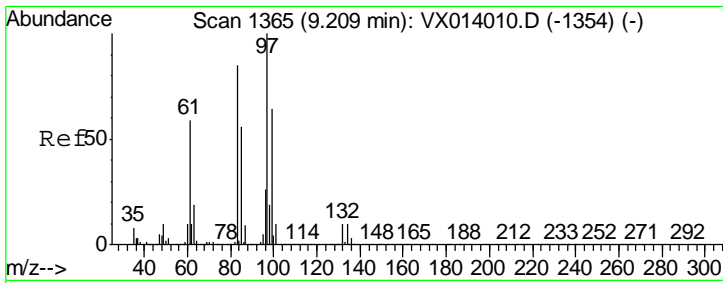
Tgt Ion	Resp	Lower	Upper
43	100		
58	27.3	32.2	48.2#



#52
 Toluene
 Concen: 0.507 ug/l
 RT: 8.78 min Scan# 1295
 Delta R.T. 0.00 min
 Lab File: VX014386.D
 Acq: 31 Dec 2019 17:37

Tgt Ion	Resp	Lower	Upper
92	100		
91	151.6	136.2	204.4

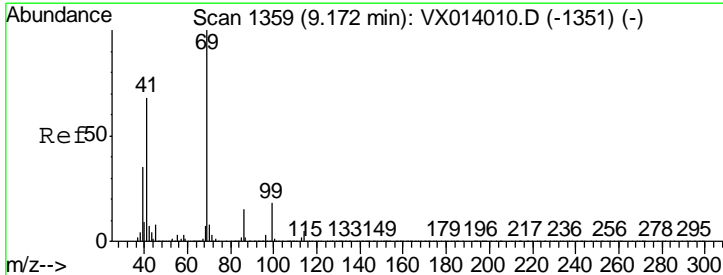
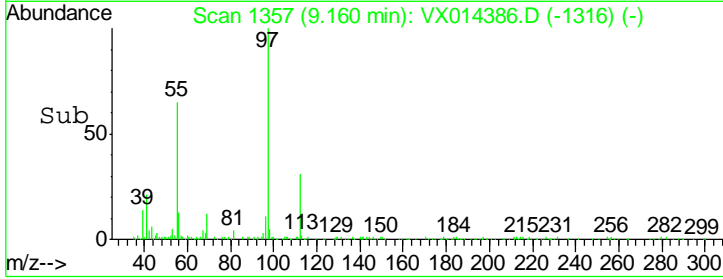
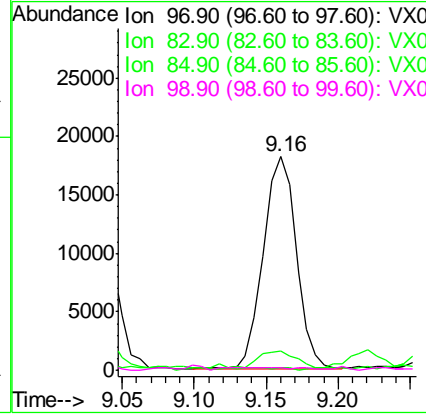
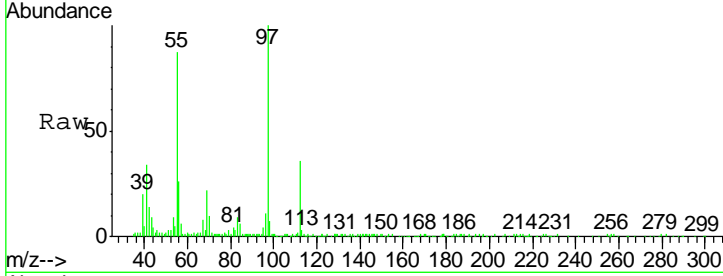




#55
 1,1,2-Trichloroethane
 Concen: 5.197 ug/l
 RT: 9.16 min Scan# 1357
 Delta R.T. -0.05 min
 Lab File: VX014386.D
 Acq: 31 Dec 2019 17:37

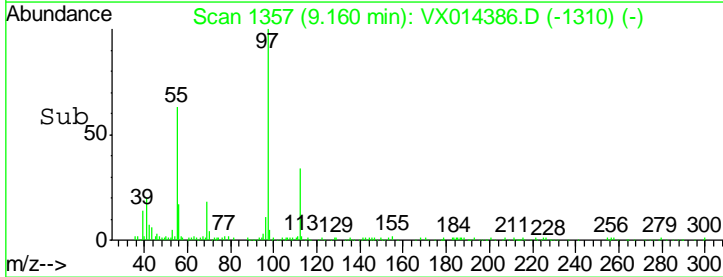
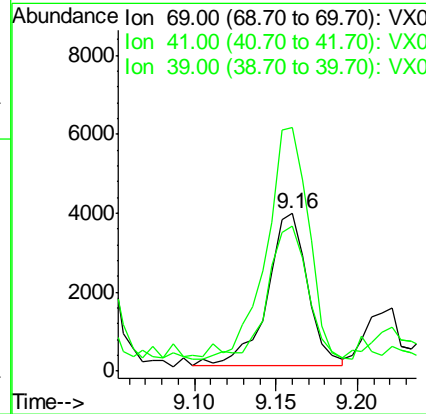
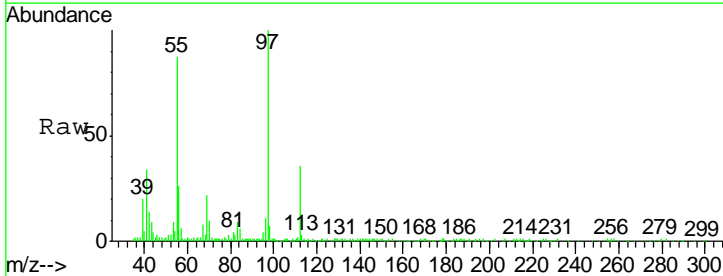
Instrument :
 MSVOA_X
 ClientSampled :
 K500-3ME

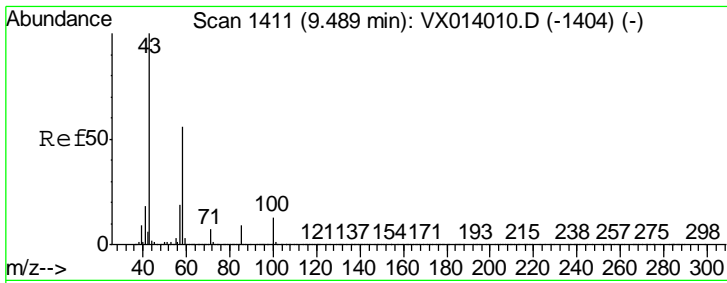
Tgt Ion	Resp	Lower	Upper
97	100		
83	8.4	68.2	102.4#
85	0.3	44.6	66.8#
99	0.0	51.4	77.0#



#56
 Ethyl methacrylate
 Concen: 0.753 ug/l
 RT: 9.16 min Scan# 1357
 Delta R.T. -0.01 min
 Lab File: VX014386.D
 Acq: 31 Dec 2019 17:37

Tgt Ion	Resp	Lower	Upper
69	100		
41	159.1	54.8	82.2#
39	88.7	28.3	42.5#

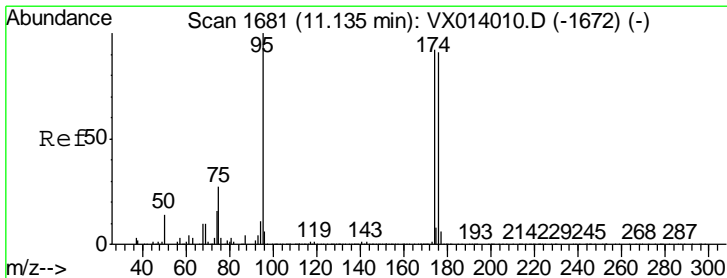
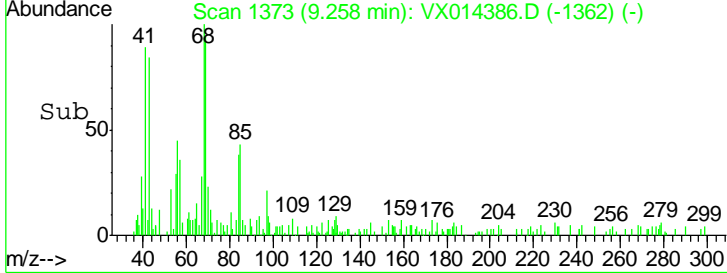
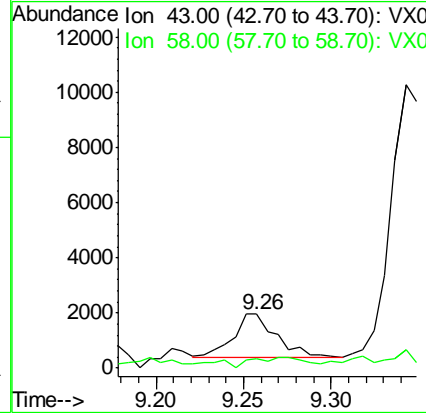
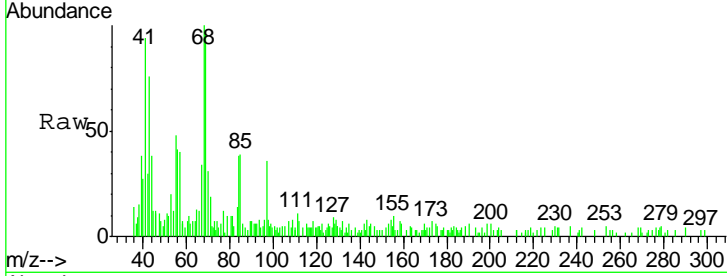




#59
 2-Hexanone
 Concen: 0.398 ug/l
 RT: 9.26 min Scan# 1373
 Delta R.T. -0.23 min
 Lab File: VX014386.D
 Acq: 31 Dec 2019 17:37

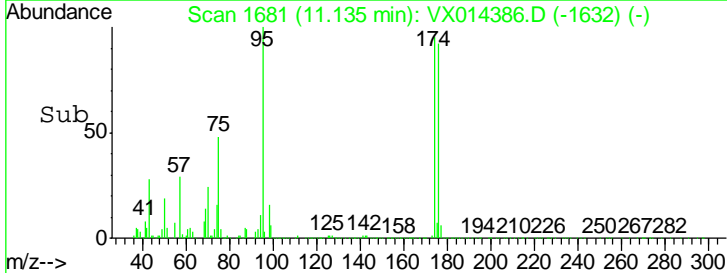
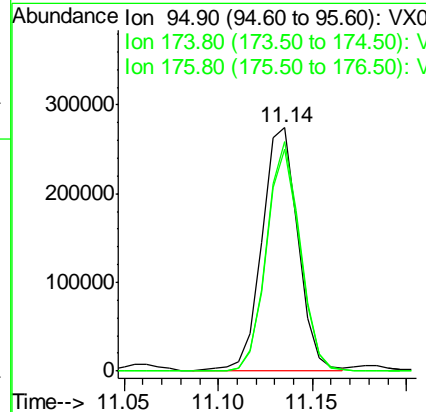
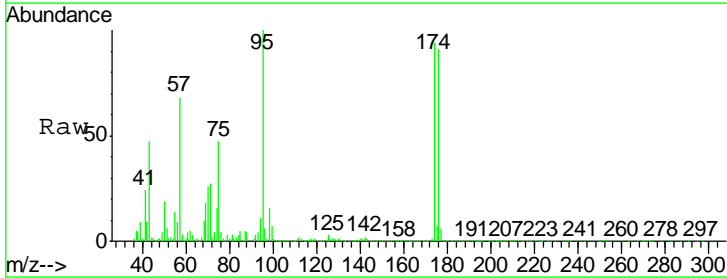
Instrument :
 MSVOA_X
ClientSampled :
 K500-3ME

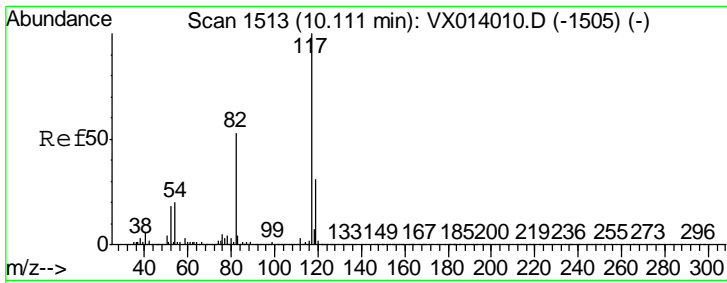
Tgt Ion: 43 Resp: 2623
 Ion Ratio Lower Upper
 43 100
 58 31.7 28.0 84.0



#62
 4-Bromofluorobenzene
 Concen: 53.301 ug/l
 RT: 11.14 min Scan# 1681
 Delta R.T. 0.00 min
 Lab File: VX014386.D
 Acq: 31 Dec 2019 17:37

Tgt Ion: 95 Resp: 358601
 Ion Ratio Lower Upper
 95 100
 174 89.1 0.0 175.8
 176 86.7 0.0 173.0

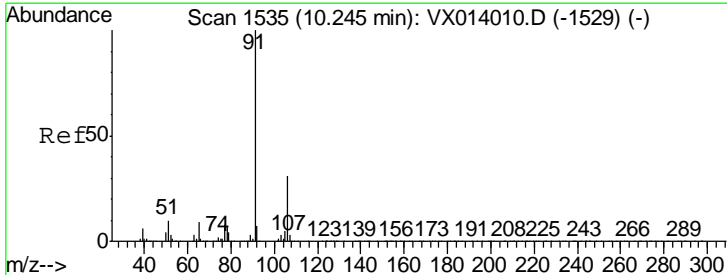
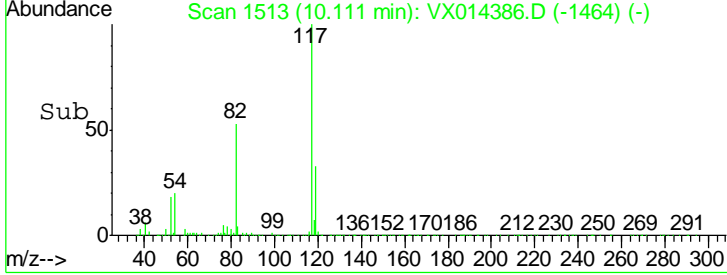
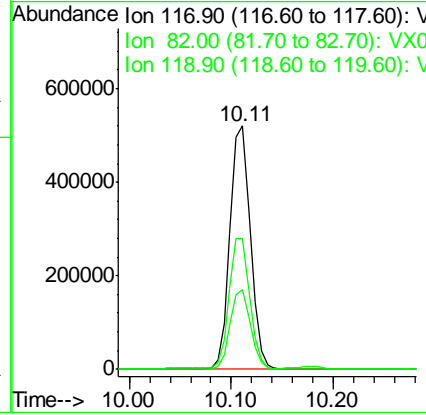
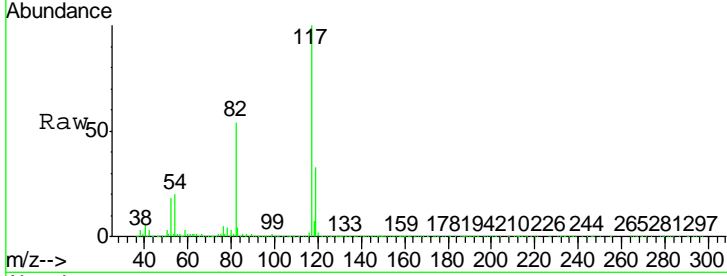




#63
 Chlorobenzene-d5
 Concen: 50.000 ug/l
 RT: 10.11 min Scan# 1513
 Delta R.T. 0.00 min
 Lab File: VX014386.D
 Acq: 31 Dec 2019 17:37

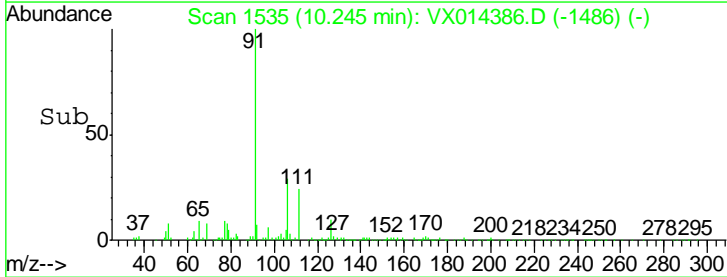
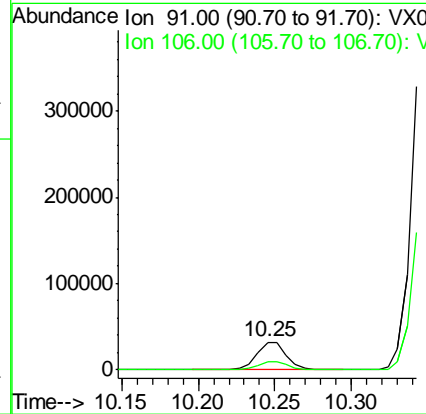
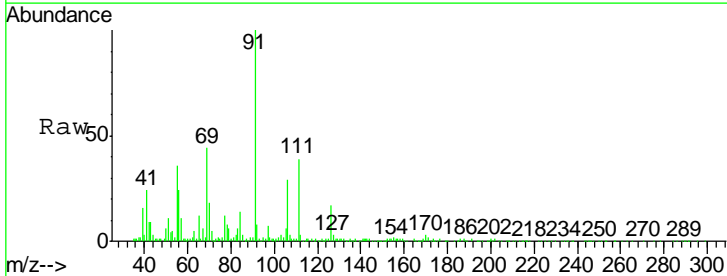
Instrument : MSVOA_X
 ClientSampled : K500-3ME

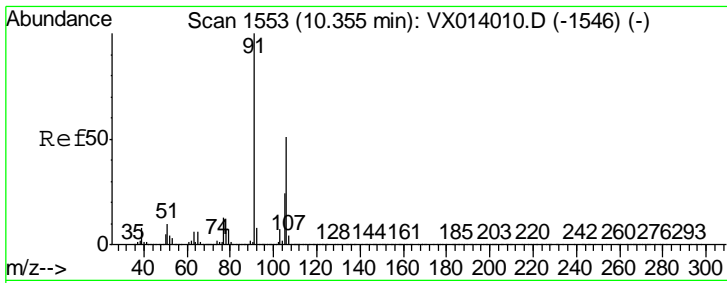
Tgt Ion	Resp	Lower	Upper
117	722924		
82	53.5	42.2	63.4
119	32.6	25.1	37.7



#67
 Ethyl Benzene
 Concen: 1.643 ug/l
 RT: 10.25 min Scan# 1535
 Delta R.T. 0.00 min
 Lab File: VX014386.D
 Acq: 31 Dec 2019 17:37

Tgt Ion	Resp	Lower	Upper
91	43428		
106	28.7	25.0	37.6

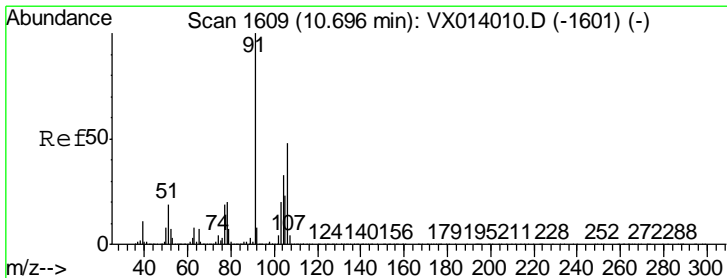
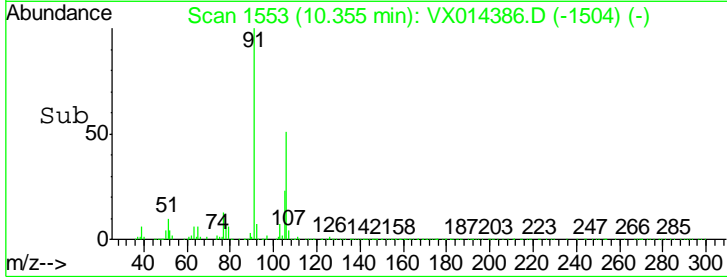
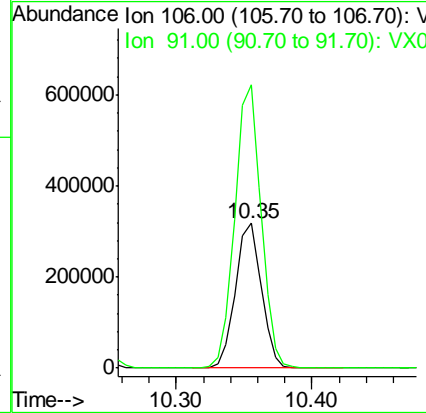
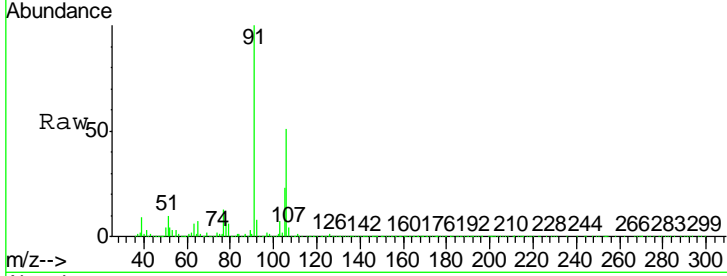




#68
 m/p-Xylenes
 Concen: 41.728 ug/l
 RT: 10.35 min Scan# 1553
 Delta R.T. 0.00 min
 Lab File: VX014386.D
 Acq: 31 Dec 2019 17:37

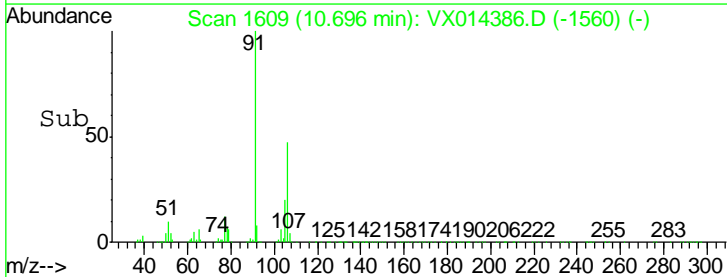
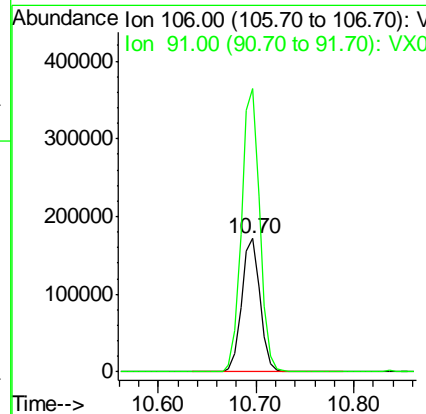
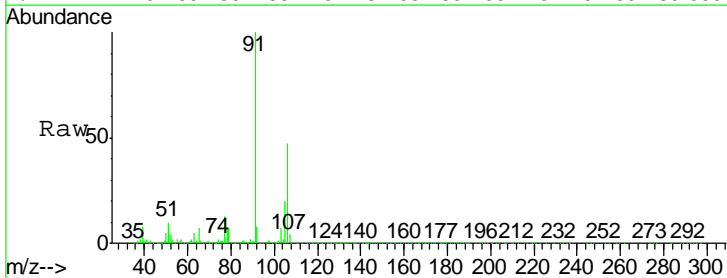
Instrument :
 MSVOA_X
 ClientSampled :
 K500-3ME

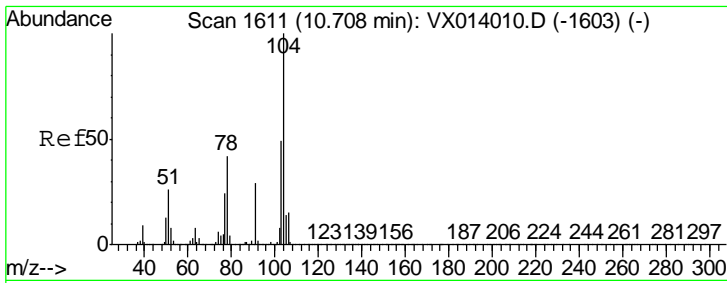
Tgt Ion:106 Resp: 424127
 Ion Ratio Lower Upper
 106 100
 91 197.0 158.6 238.0



#69
 o-Xylene
 Concen: 22.429 ug/l
 RT: 10.70 min Scan# 1609
 Delta R.T. 0.00 min
 Lab File: VX014386.D
 Acq: 31 Dec 2019 17:37

Tgt Ion:106 Resp: 223581
 Ion Ratio Lower Upper
 106 100
 91 208.9 104.2 312.6

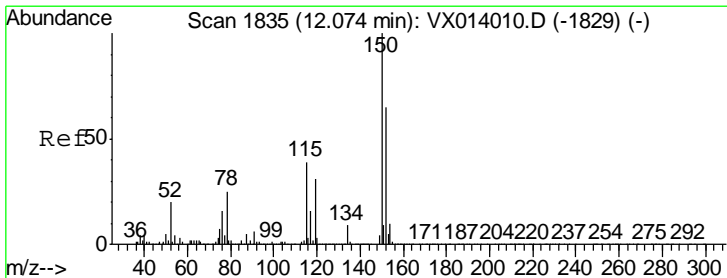
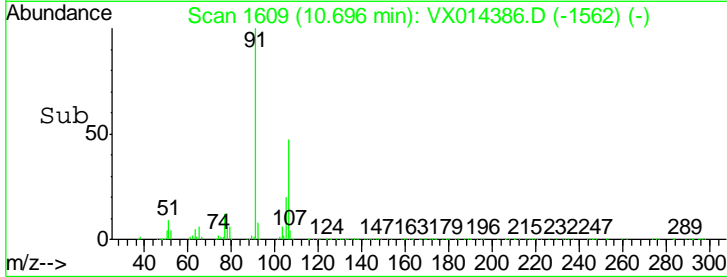
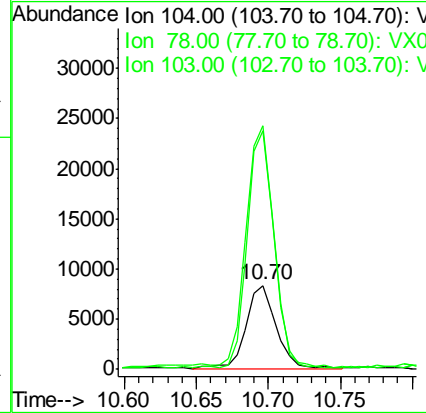
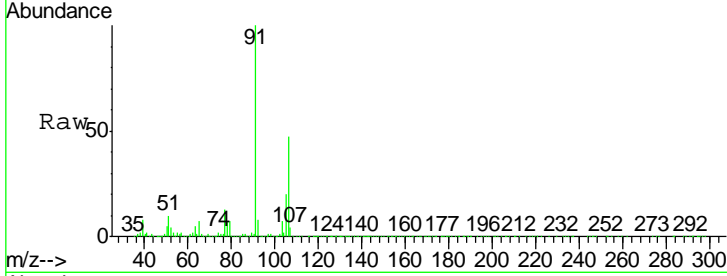




#70
 Styrene
 Concen: 0.736 ug/l
 RT: 10.70 min Scan# 1609
 Delta R.T. -0.01 min
 Lab File: VX014386.D
 Acq: 31 Dec 2019 17:37

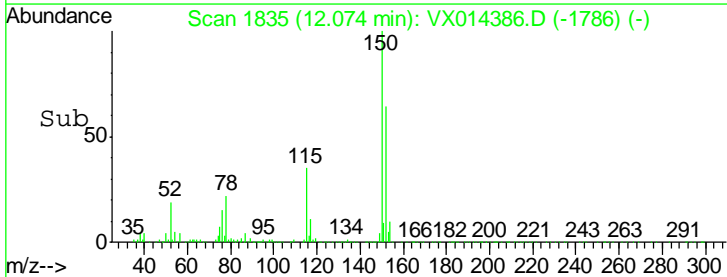
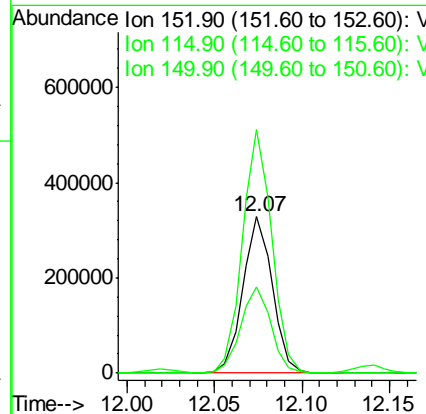
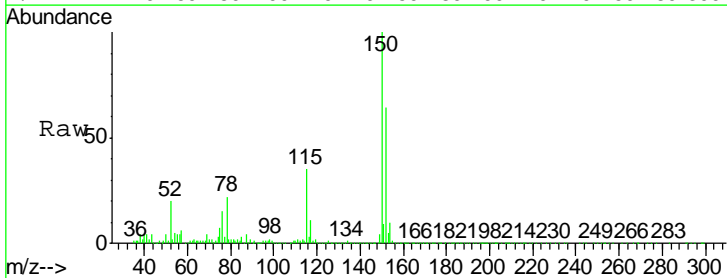
Instrument :
 MSVOA_X
 ClientSampled :
 K500-3ME

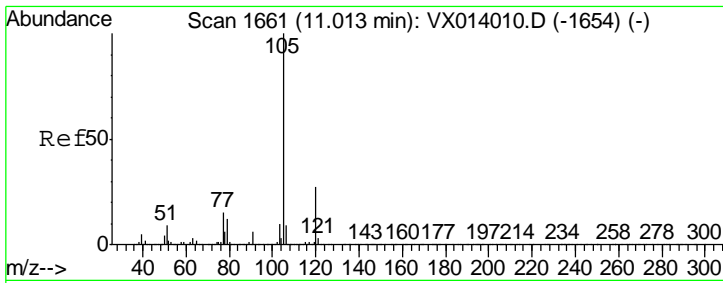
Tgt Ion	Resp	Lower	Upper
104	12411		
78	259.7	38.5	57.7#
103	246.2	42.9	64.3#



#72
 1,4-Dichlorobenzene-d4
 Concen: 50.000 ug/l
 RT: 12.07 min Scan# 1835
 Delta R.T. 0.00 min
 Lab File: VX014386.D
 Acq: 31 Dec 2019 17:37

Tgt Ion	Resp	Lower	Upper
152	381968		
115	56.5	38.3	114.9
150	155.8	0.0	345.4

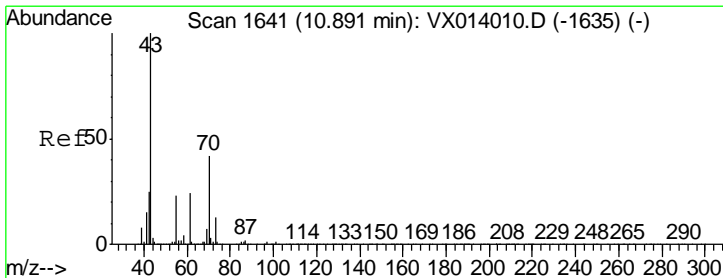
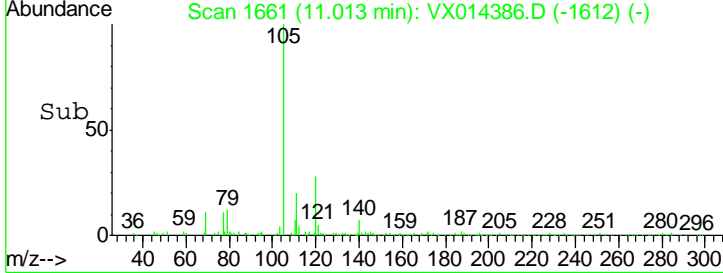
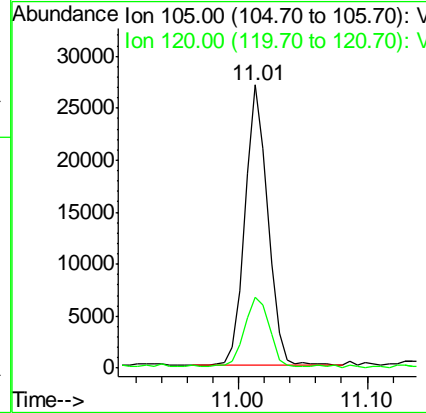
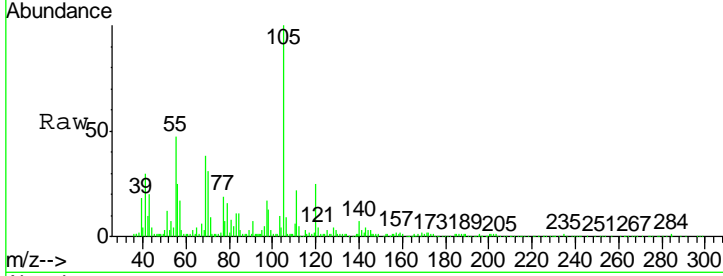




#73
 Isopropylbenzene
 Concen: 1.231 ug/l
 RT: 11.01 min Scan# 1661
 Delta R.T. 0.00 min
 Lab File: VX014386.D
 Acq: 31 Dec 2019 17:37

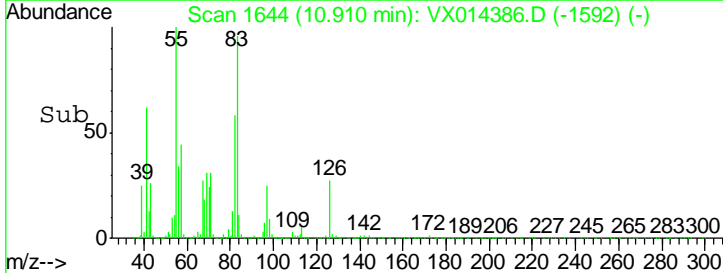
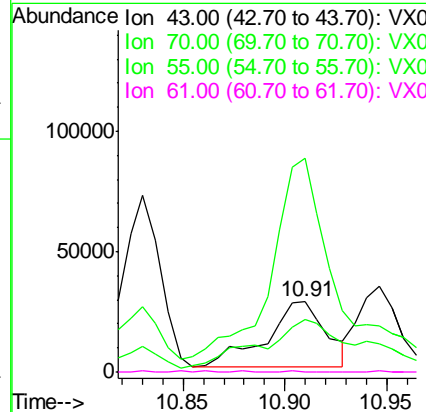
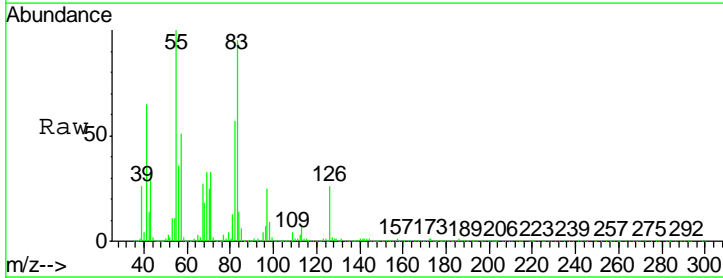
Instrument :
 MSVOA_X
 ClientSampled :
 K500-3ME

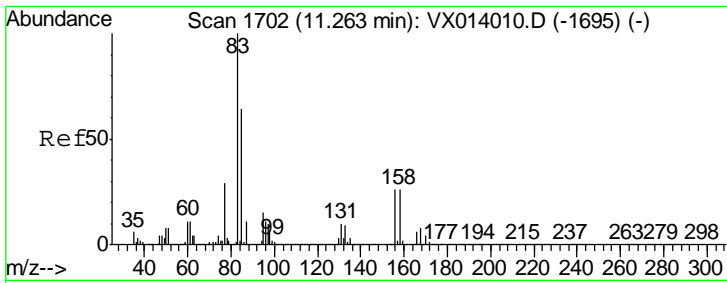
Tgt Ion	Resp	Lower	Upper
105	100		
120	26.7	13.5	40.4



#74
 N-aryl acetate
 Concen: 4.350 ug/l
 RT: 10.91 min Scan# 1644
 Delta R.T. 0.02 min
 Lab File: VX014386.D
 Acq: 31 Dec 2019 17:37

Tgt Ion	Resp	Lower	Upper
43	100		
70	95.1	34.4	51.6#
55	320.8	19.1	28.7#
61	0.0	19.7	29.5#

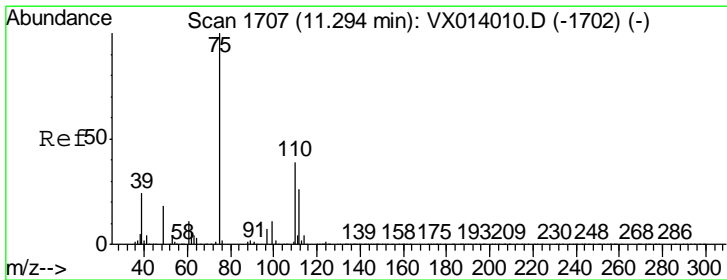
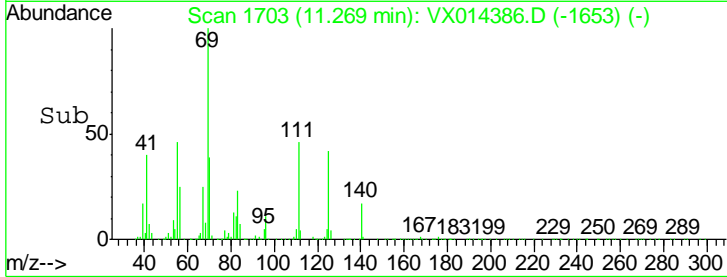
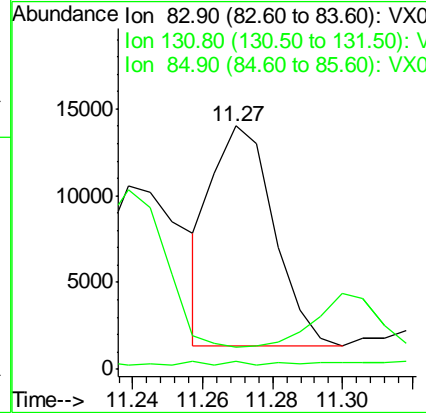
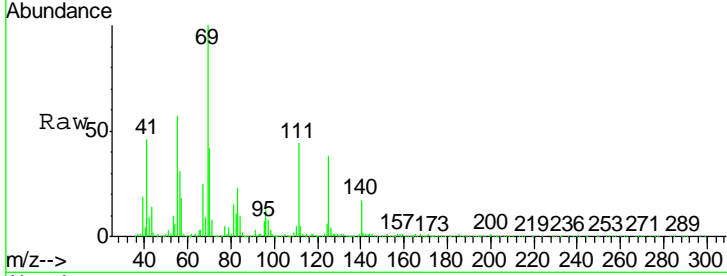




#75
 1,1,2,2-Tetrachloroethane
 Concen: 1.670 ug/l
 RT: 11.27 min Scan# 1703
 Delta R.T. 0.01 min
 Lab File: VX014386.D
 Acq: 31 Dec 2019 17:37

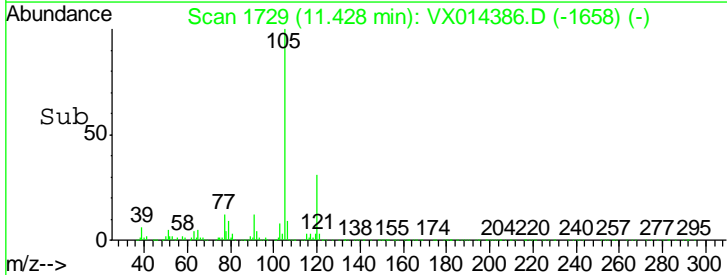
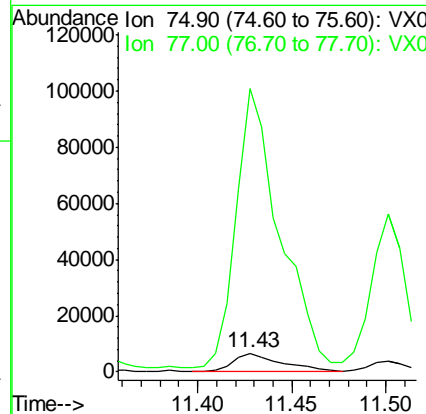
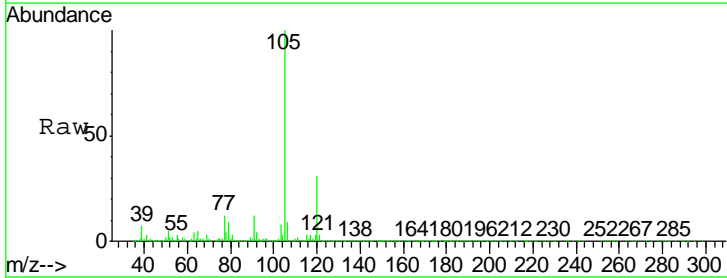
Instrument :
 MSVOA_X
 ClientSampled :
 K500-3ME

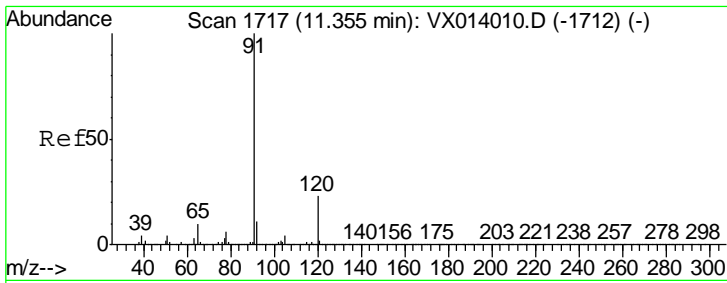
Tgt Ion	Resp	Lower	Upper
83	15574		
131	0.6	5.1	15.2#
85	0.0	31.9	95.7#



#76
 1,2,3-Trichloropropane
 Concen: 1.307 ug/l
 RT: 11.43 min Scan# 1729
 Delta R.T. 0.13 min
 Lab File: VX014386.D
 Acq: 31 Dec 2019 17:37

Tgt Ion	Resp	Lower	Upper
75	10837		
77	1492.2	19.3	57.8#

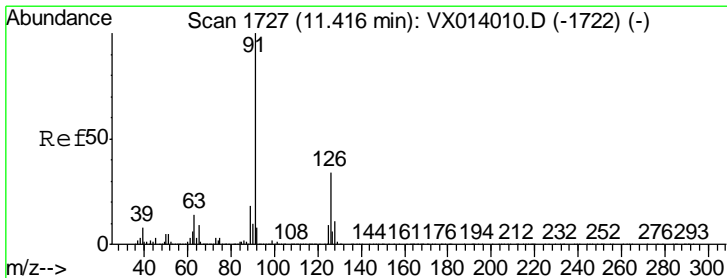
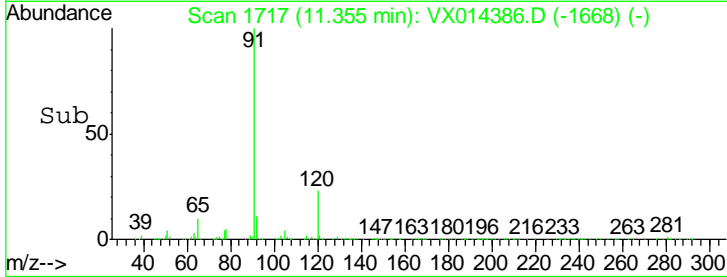
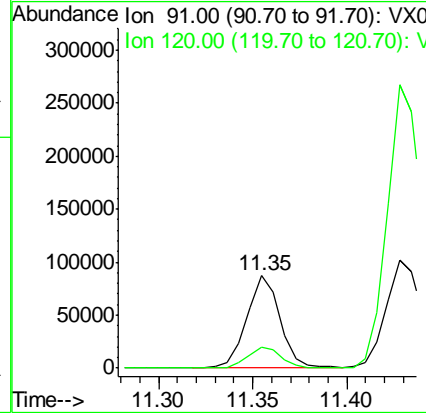
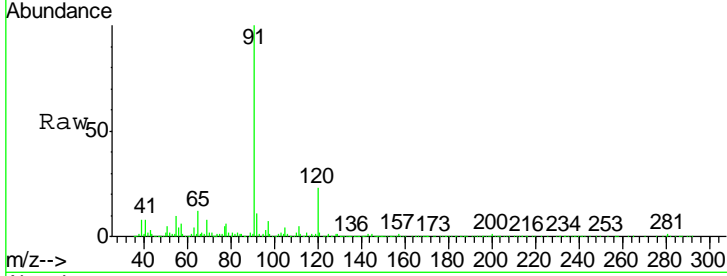




#78
 n-propylbenzene
 Concen: 3.451 ug/l
 RT: 11.35 min Scan# 1717
 Delta R.T. 0.00 min
 Lab File: VX014386.D
 Acq: 31 Dec 2019 17:37

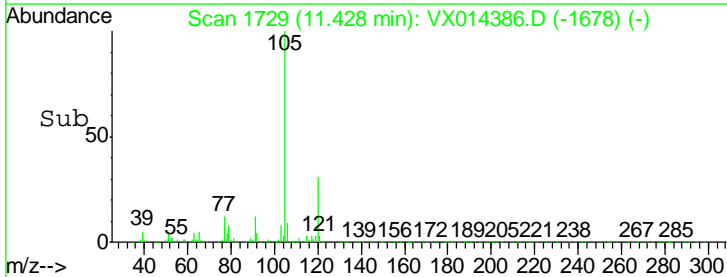
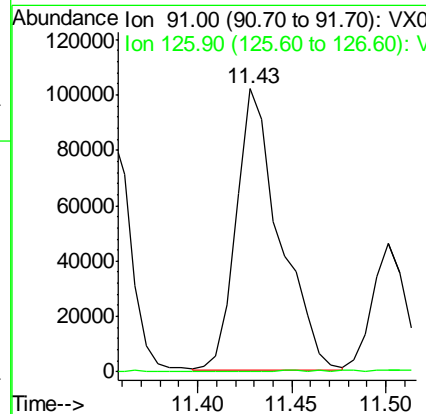
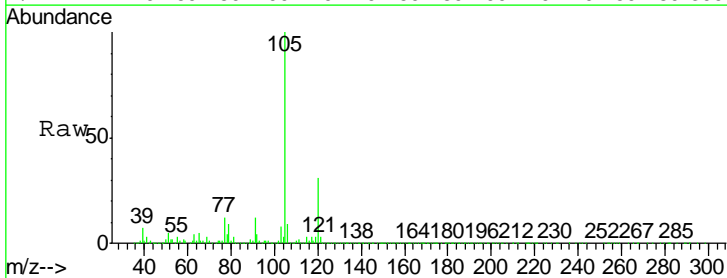
Instrument :
 MSVOA_X
 ClientSampled :
 K500-3ME

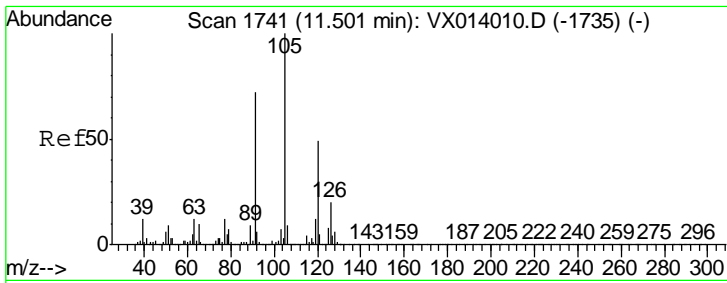
Tgt Ion: 91 Resp: 104100
 Ion Ratio Lower Upper
 91 100
 120 23.5 11.7 35.0



#79
 2-Chlorotoluene
 Concen: 8.860 ug/l
 RT: 11.43 min Scan# 1729
 Delta R.T. 0.01 min
 Lab File: VX014386.D
 Acq: 31 Dec 2019 17:37

Tgt Ion: 91 Resp: 162471
 Ion Ratio Lower Upper
 91 100
 126 0.6 17.2 51.6#

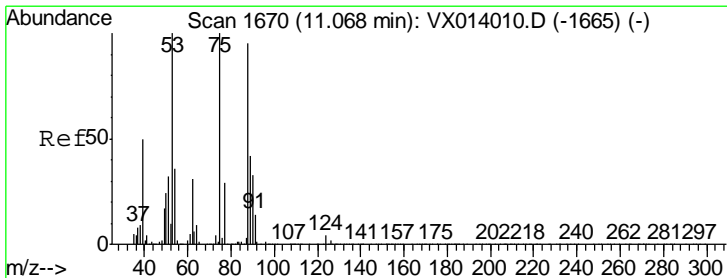
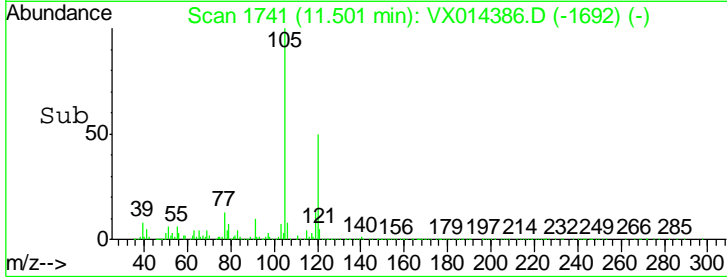
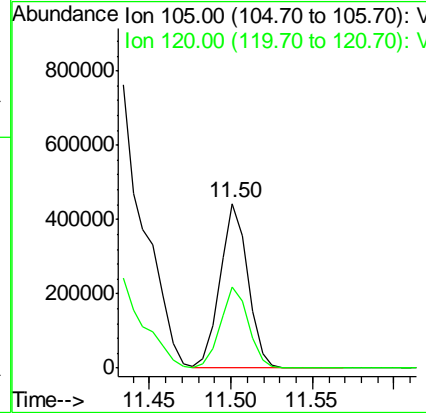
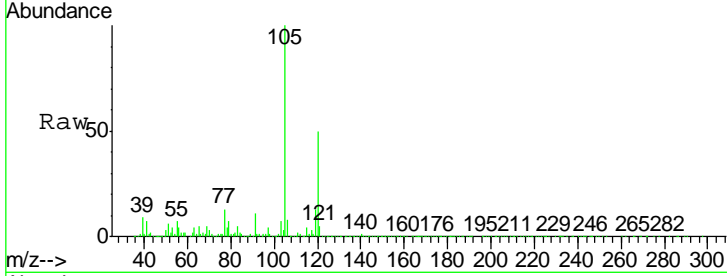




#80
 1,3,5-Trimethylbenzene
 Concen: 23.135 ug/l
 RT: 11.50 min Scan# 1741
 Delta R.T. 0.00 min
 Lab File: VX014386.D
 Acq: 31 Dec 2019 17:37

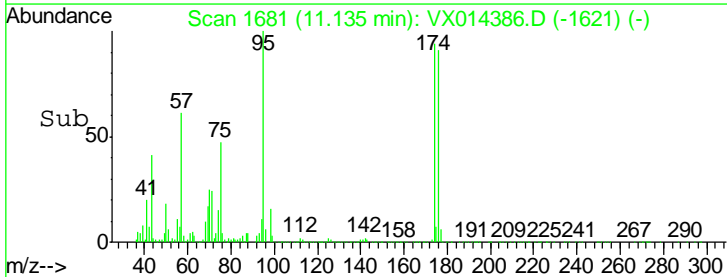
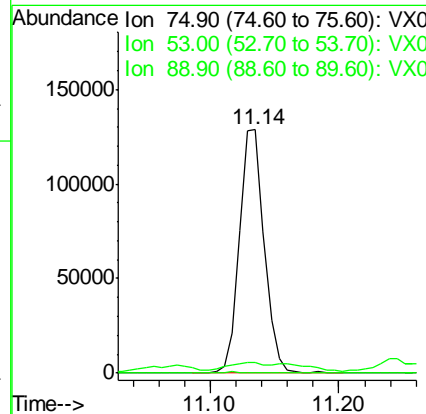
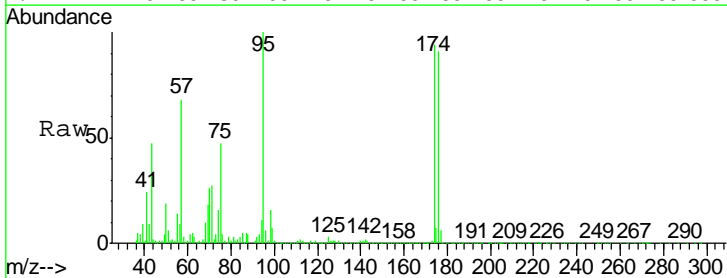
Instrument :
 MSVOA_X
 ClientSampled :
 K500-3ME

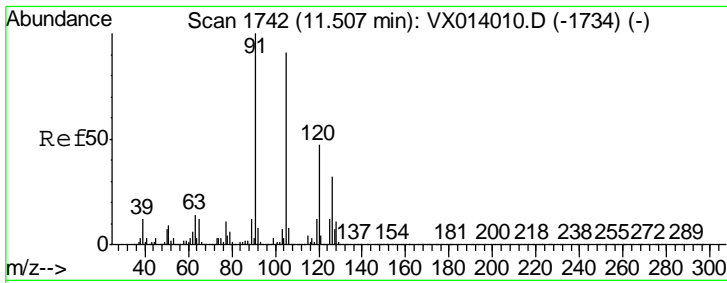
Tgt Ion: 105 Resp: 523625
 Ion Ratio Lower Upper
 105 100
 120 49.7 25.3 75.8



#81
 trans-1,4-Dichloro-2-butene
 Concen: 58.607 ug/l
 RT: 11.14 min Scan# 1681
 Delta R.T. 0.07 min
 Lab File: VX014386.D
 Acq: 31 Dec 2019 17:37

Tgt Ion: 75 Resp: 172184
 Ion Ratio Lower Upper
 75 100
 53 4.0 76.7 115.1#
 89 0.4 34.6 51.8#

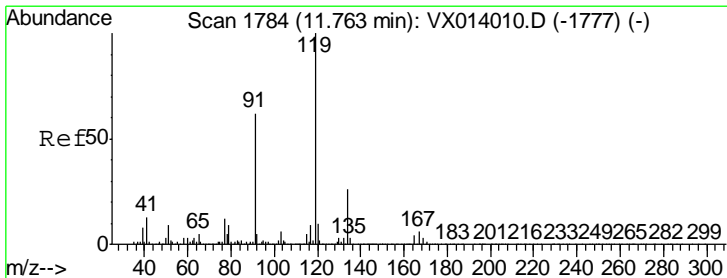
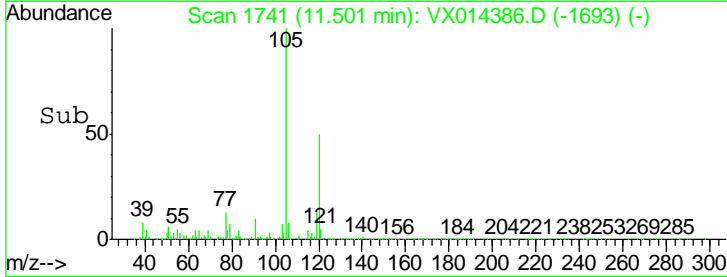
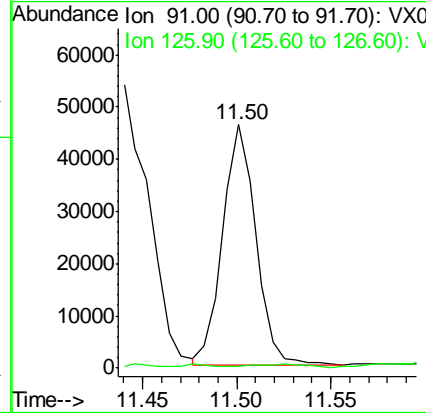
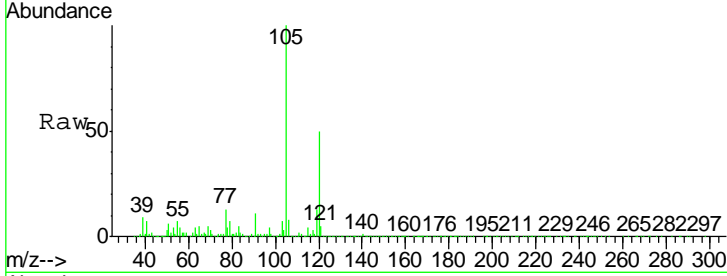




#82
 4-Chlorotoluene
 Concen: 2.635 ug/l
 RT: 11.50 min Scan# 1741
 Delta R.T. -0.01 min
 Lab File: VX014386.D
 Acq: 31 Dec 2019 17:37

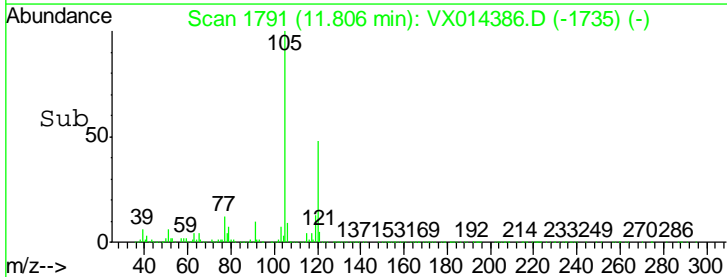
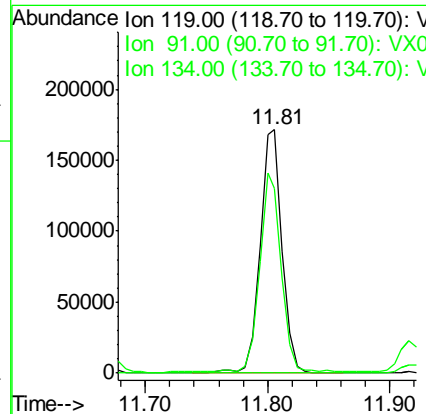
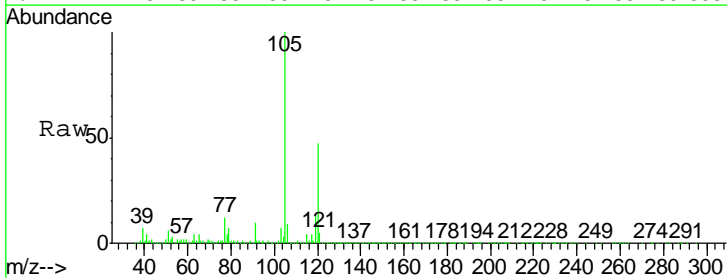
Instrument :
 MSVOA_X
 ClientSampled :
 K500-3ME

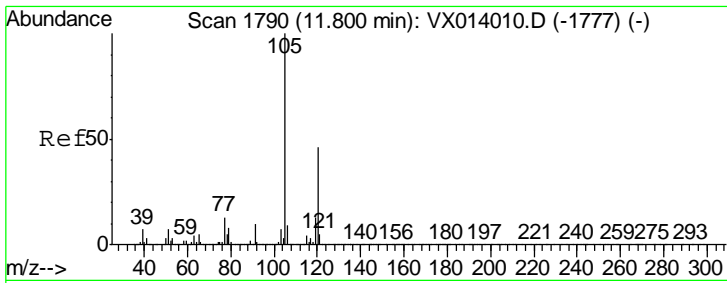
Tgt Ion: 91 Resp: 56040
 Ion Ratio Lower Upper
 91 100
 126 0.0 15.6 46.8#



#83
 tert-Butylbenzene
 Concen: 9.702 ug/l
 RT: 11.81 min Scan# 1791
 Delta R.T. 0.04 min
 Lab File: VX014386.D
 Acq: 31 Dec 2019 17:37

Tgt Ion: 119 Resp: 213705
 Ion Ratio Lower Upper
 119 100
 91 80.9 28.5 85.6
 134 0.0 12.2 36.6#

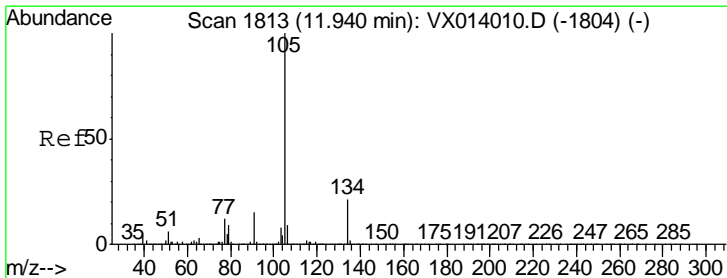
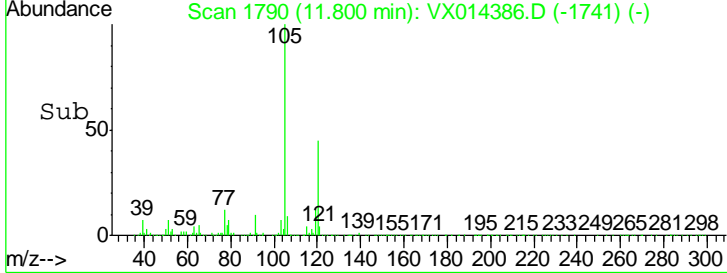
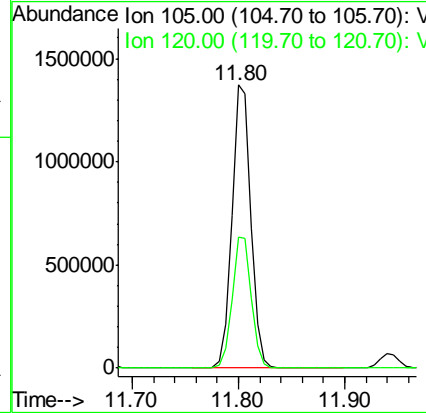
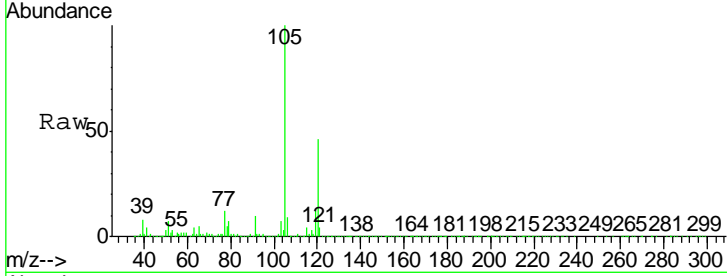




#84
 1,2,4-Trimethylbenzene
 Concen: 74.780 ug/l
 RT: 11.80 min Scan# 1790
 Delta R.T. 0.00 min
 Lab File: VX014386.D
 Acq: 31 Dec 2019 17:37

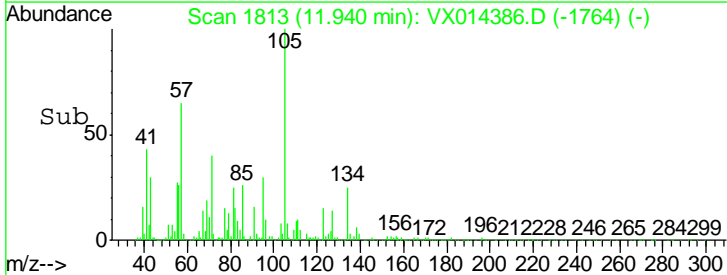
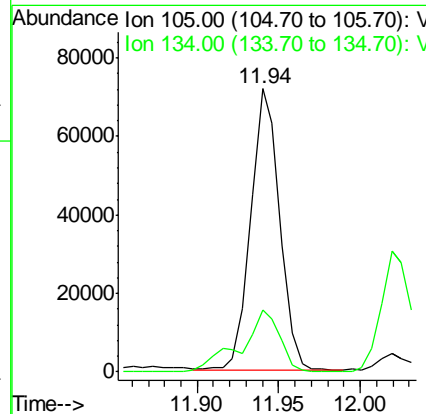
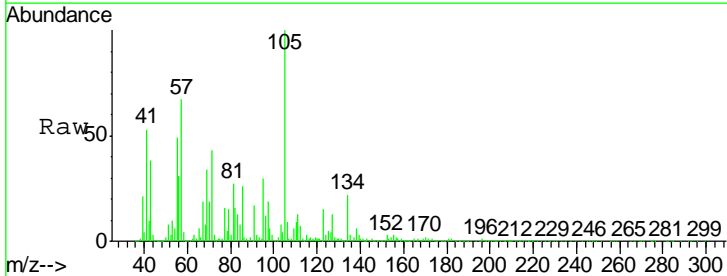
Instrument :
 MSVOA_X
 ClientSampled :
 K500-3ME

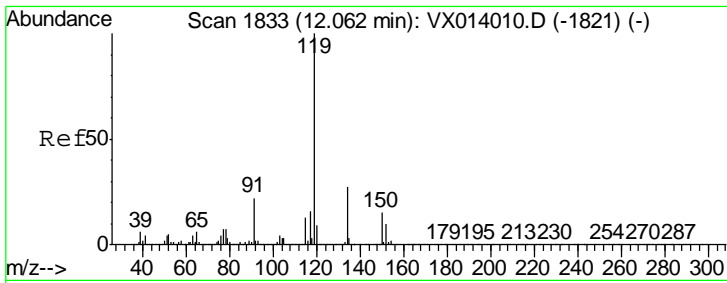
Tgt Ion:105 Resp: 1694977
 Ion Ratio Lower Upper
 105 100
 120 46.9 23.1 69.2



#85
 sec-Butylbenzene
 Concen: 3.405 ug/l
 RT: 11.94 min Scan# 1813
 Delta R.T. 0.00 min
 Lab File: VX014386.D
 Acq: 31 Dec 2019 17:37

Tgt Ion:105 Resp: 88551
 Ion Ratio Lower Upper
 105 100
 134 29.5 10.4 31.1

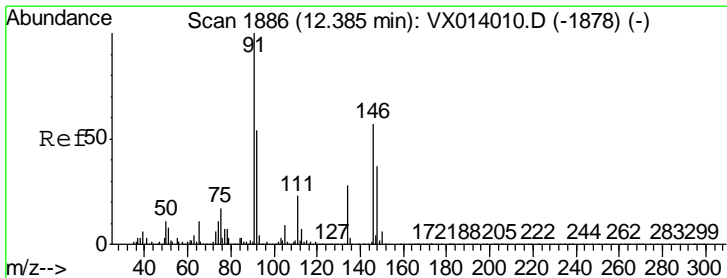
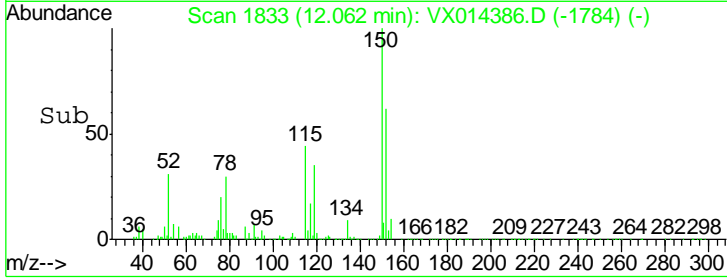
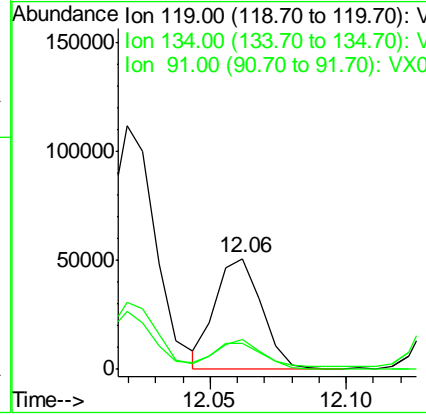
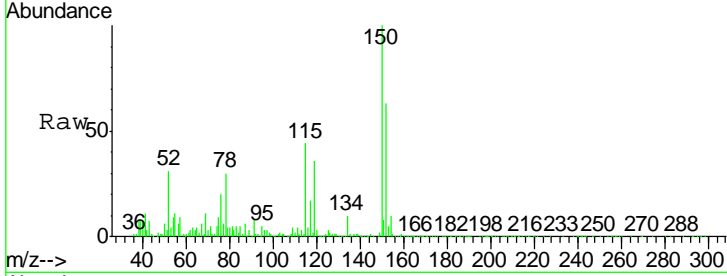




#86
 p-Isopropyltoluene
 Concen: 2.482 ug/l
 RT: 12.06 min Scan# 1833
 Delta R.T. 0.00 min
 Lab File: VX014386.D
 Acq: 31 Dec 2019 17:37

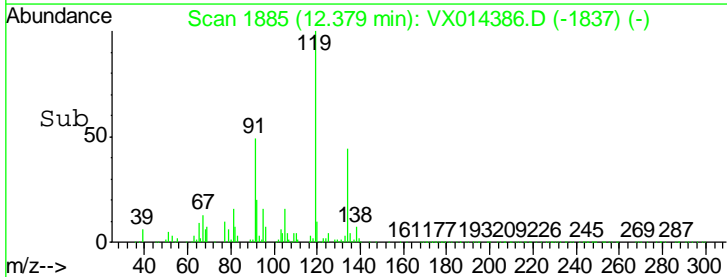
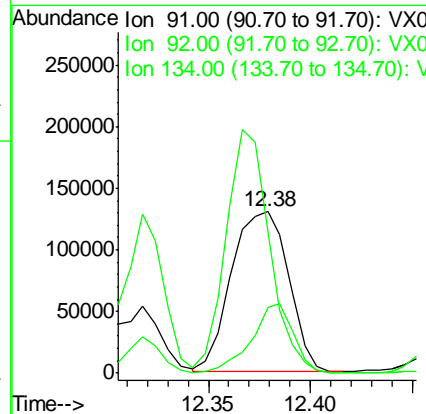
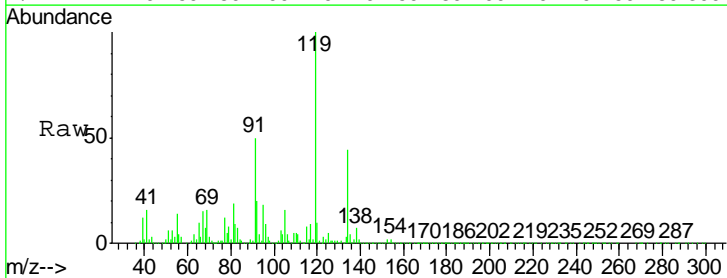
Instrument :
 MSVOA_X
 ClientSampled :
 K500-3ME

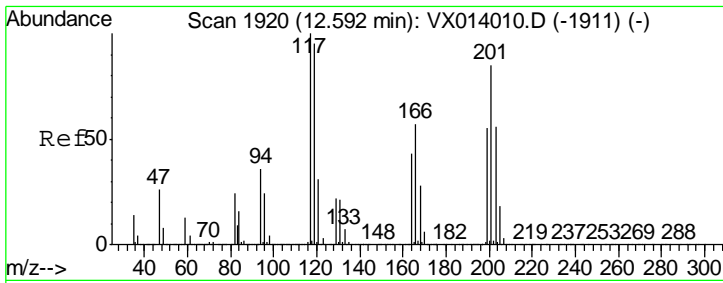
Tgt Ion	Resp	Lower	Upper
119	100		
134	27.0	13.4	40.1
91	22.3	11.4	34.1



#89
 n-Butylbenzene
 Concen: 12.341 ug/l
 RT: 12.38 min Scan# 1885
 Delta R.T. -0.01 min
 Lab File: VX014386.D
 Acq: 31 Dec 2019 17:37

Tgt Ion	Resp	Lower	Upper
91	100		
92	32.1	27.2	81.6
134	116.2	13.4	40.1#

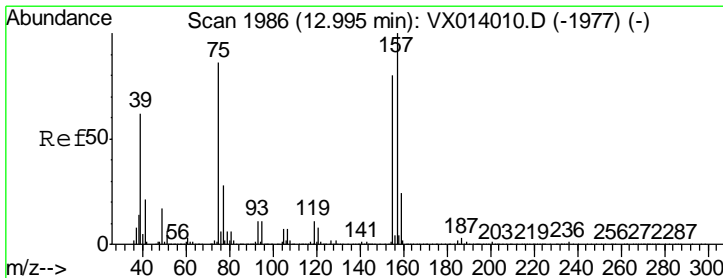
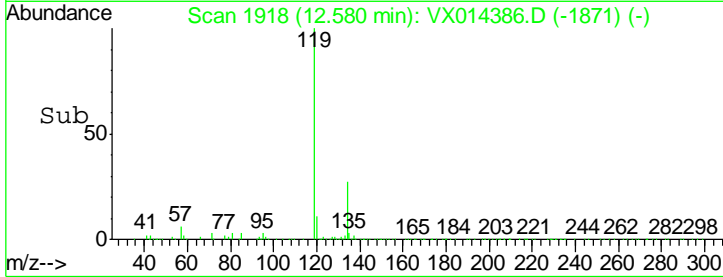
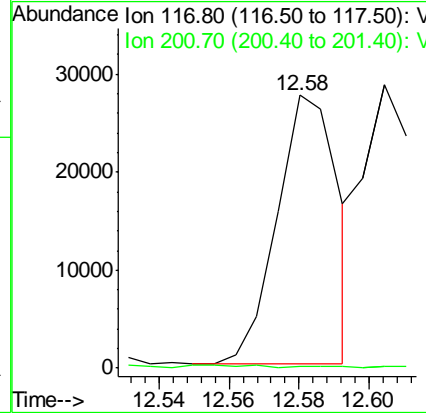
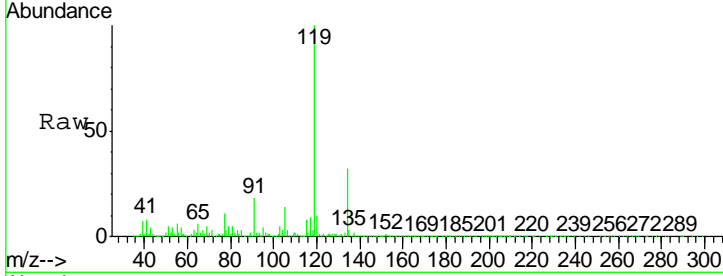




#90
 Hexachloroethane
 Concen: 7.820 ug/l
 RT: 12.58 min Scan# 1918
 Delta R.T. -0.01 min
 Lab File: VX014386.D
 Acq: 31 Dec 2019 17:37

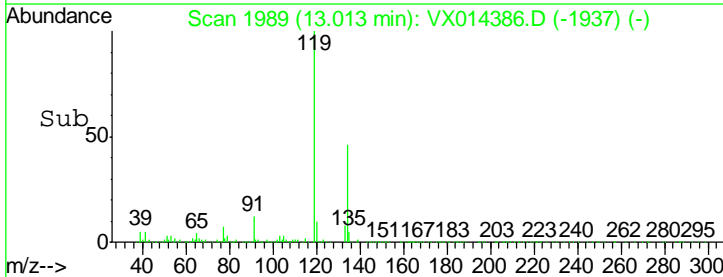
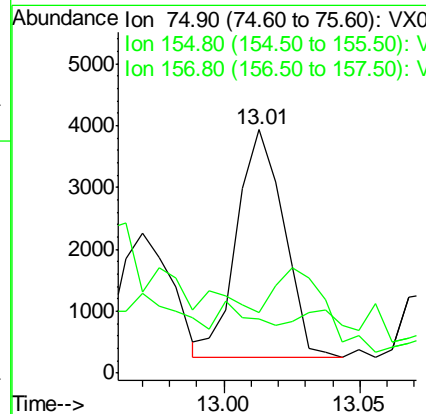
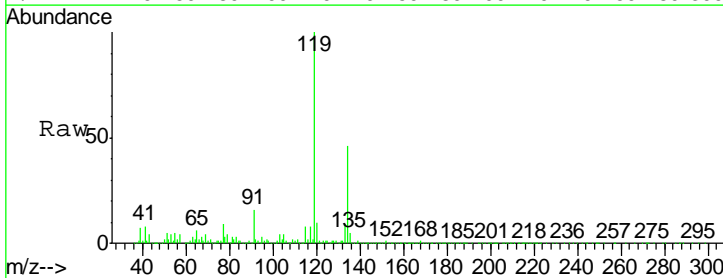
Instrument :
 MSVOA_X
 ClientSampled :
 K500-3ME

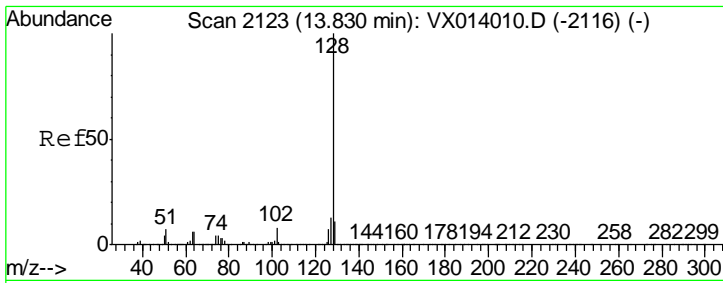
Tgt Ion: 117 Resp: 33409
 Ion Ratio Lower Upper
 117 100
 201 1.2 43.1 129.3#



#92
 1,2-Dibromo-3-Chloropropane
 Concen: 2.144 ug/l
 RT: 13.01 min Scan# 1989
 Delta R.T. 0.02 min
 Lab File: VX014386.D
 Acq: 31 Dec 2019 17:37

Tgt Ion: 75 Resp: 4423
 Ion Ratio Lower Upper
 75 100
 155 40.3 46.9 140.6#
 157 0.0 60.8 182.4#

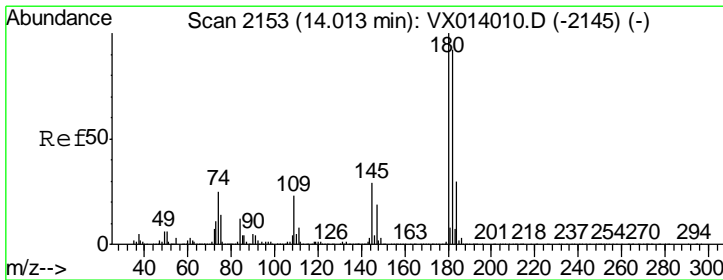
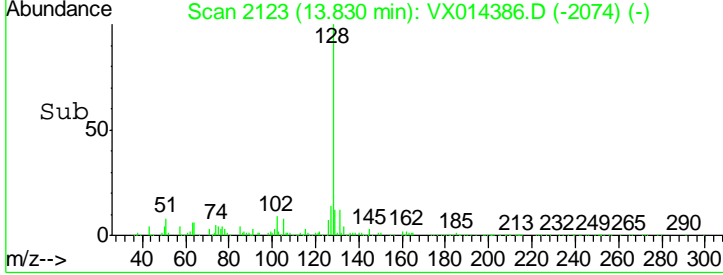
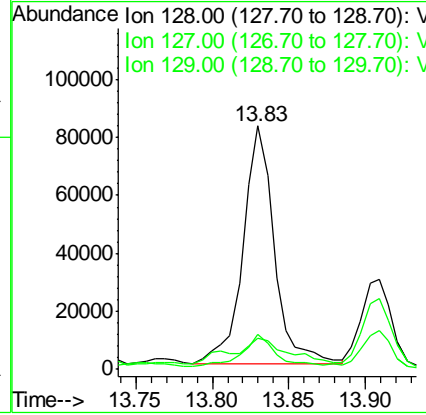
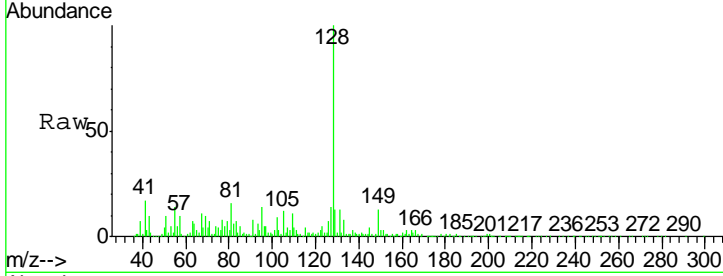




#95
 Naphthalene
 Concen: 4.668 ug/l
 RT: 13.83 min Scan# 2123
 Delta R.T. 0.00 min
 Lab File: VX014386.D
 Acq: 31 Dec 2019 17:37

Instrument : MSVOA_X
 Client Sampled : K500-3ME

Tgt Ion	Resp	Lower	Upper
128	116368		
127	14.4	10.2	15.4
129	19.0	8.7	13.1#



#96
 1,2,3-Trichlorobenzene
 Concen: 0.945 ug/l
 RT: 14.03 min Scan# 2156
 Delta R.T. 0.02 min
 Lab File: VX014386.D
 Acq: 31 Dec 2019 17:37

Tgt Ion	Resp	Lower	Upper
180	7915		
182	18.6	46.8	140.3#
145	849.7	14.8	44.4#

