

Data Path : Z:\voasrv\HPCHEM1\MSVOA_X\Data\VX123121\
 Data File : VX026170.D
 Acq On : 30 Dec 2021 16:00
 Operator : JC/MD
 Sample : M5207-03
 Misc : 5.0mL/MSVOA_X/WATER
 ALS Vial : 16 Sample Multiplier: 1

Instrument :
 MSVOA_X
 ClientSampleId :
 SLUCE-WAY-122021

Quant Time: Dec 31 07:09:25 2021
 Quant Method : Z:\voasrv\HPCHEM1\MSVOA_X\Method\82X123021W.M
 Quant Title : SW846 8260
 QLast Update : Thu Dec 30 08:02:21 2021
 Response via : Initial Calibration

Manual Integrations
 APPROVED

Reviewed By :Mahesh Dadoda 01/01/2022
 Supervised By :Semsettin Yesilyurt 01/01/2022

Compound	R.T.	QIon	Response	Conc	Units	Dev(Min)
Internal Standards						
1) Pentafluorobenzene	5.562	168	138222	50.000	ug/l	0.00
34) 1,4-Difluorobenzene	6.769	114	236612	50.000	ug/l	0.00
63) Chlorobenzene-d5	10.055	117	207644	50.000	ug/l	0.00
72) 1,4-Dichlorobenzene-d4	12.024	152	90798	50.000	ug/l	0.00
System Monitoring Compounds						
33) 1,2-Dichloroethane-d4	5.964	65	102109	51.063	ug/l	0.00
Spiked Amount	50.000	Range 78 - 117	Recovery	=	102.120%	
35) Dibromofluoromethane	5.391	113	81090	52.714	ug/l	0.00
Spiked Amount	50.000	Range 75 - 124	Recovery	=	105.420%	
50) Toluene-d8	8.653	98	274481	47.971	ug/l	0.00
Spiked Amount	50.000	Range 92 - 112	Recovery	=	95.940%	
62) 4-Bromofluorobenzene	11.085	95	95129	46.703	ug/l	0.00
Spiked Amount	50.000	Range 83 - 123	Recovery	=	93.400%	
Target Compounds						
16) Acetone	2.386	43	21130	19.503	ug/l	98
17) Carbon Disulfide	2.514	76	1374	0.313	ug/l	99
25) 2-Butanone	4.587	43	2119m	1.404	ug/l	
30) Chloroform	5.105	83	3953	1.195	ug/l	97
47) Bromodichloromethane	7.830	83	2414	0.883	ug/l #	95
60) Dibromochloromethane	9.525	129	1551	0.764	ug/l	97
71) Bromoform	10.805	173	546	0.387	ug/l #	97

(#) = qualifier out of range (m) = manual integration (+) = signals summed

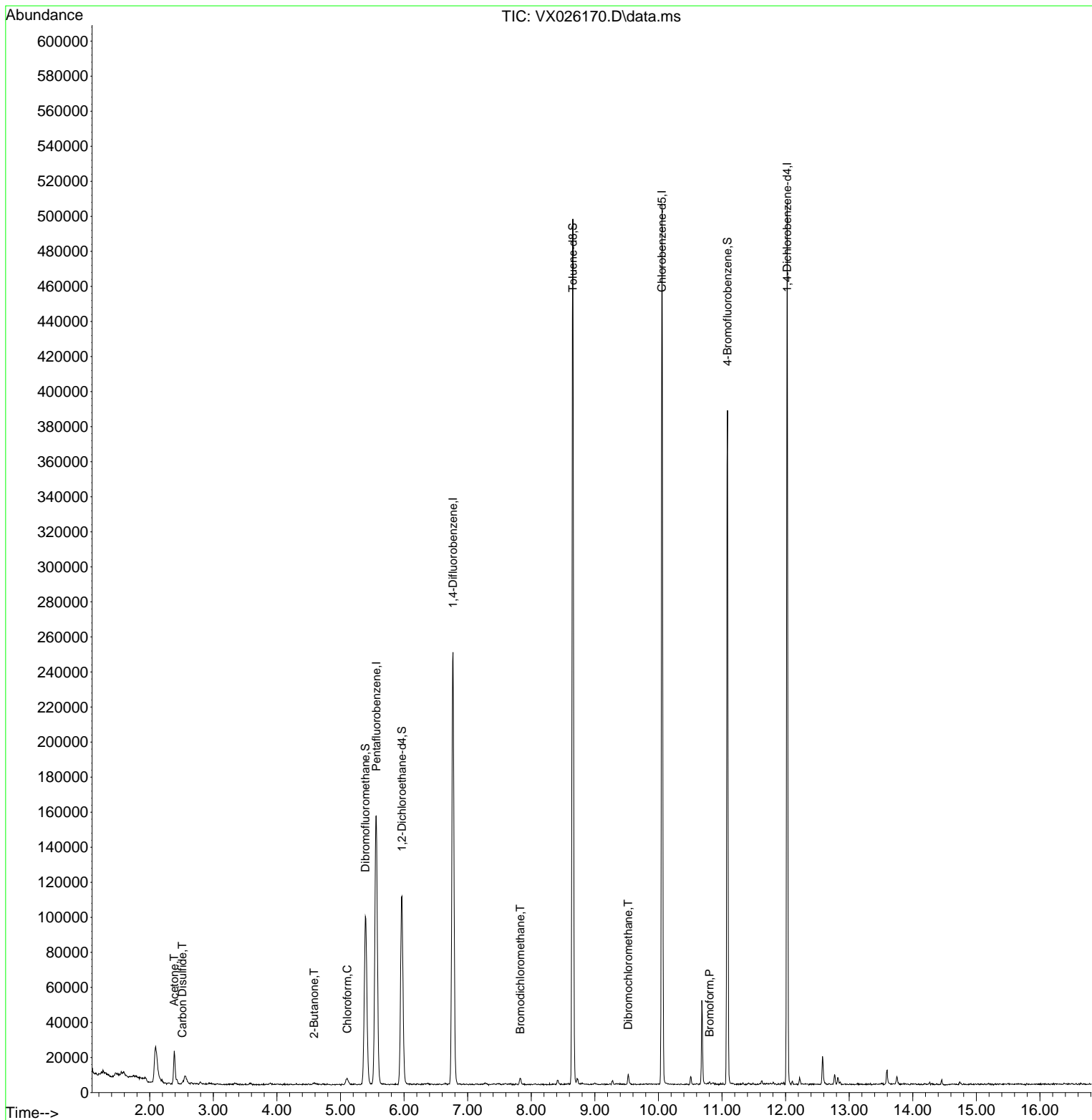
Data Path : Z:\voasrv\HPCHEM1\MSVOA_X\Data\VX123121\
 Data File : VX026170.D
 Acq On : 30 Dec 2021 16:00
 Operator : JC/MD
 Sample : M5207-03
 Misc : 5.0mL/MSVOA_X/WATER
 ALS Vial : 16 Sample Multiplier: 1

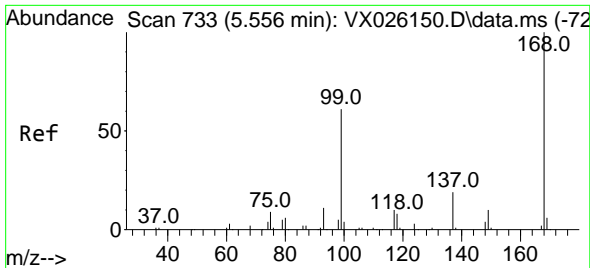
Instrument :
 MSVOA_X
ClientSampleId :
 SLUCE-WAY-122021

Quant Time: Dec 31 07:09:25 2021
 Quant Method : Z:\voasrv\HPCHEM1\MSVOA_X\Method\82X123021W.M
 Quant Title : SW846 8260
 QLast Update : Thu Dec 30 08:02:21 2021
 Response via : Initial Calibration

Manual Integrations
APPROVED

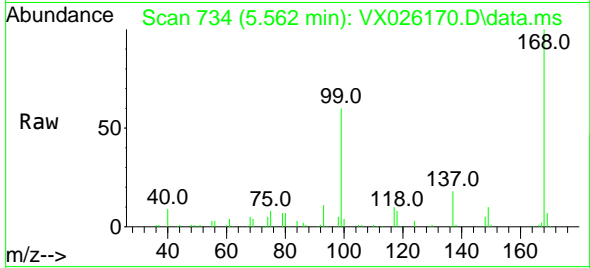
Reviewed By :Mahesh Dadoda 01/01/2022
 Supervised By :Semsettin Yesilyurt 01/01/2022





#1
 Pentafluorobenzene
 Concen: 50.000 ug/l
 RT: 5.562 min Scan# 71
 Delta R.T. 0.006 min
 Lab File: VX026170.D
 Acq: 30 Dec 2021 16:00

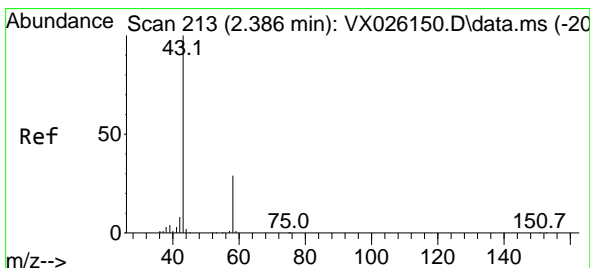
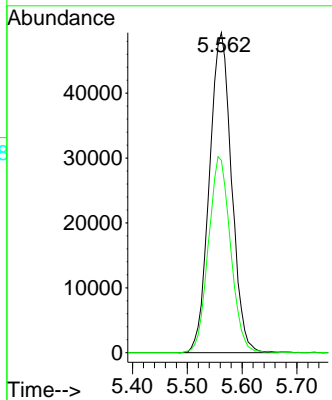
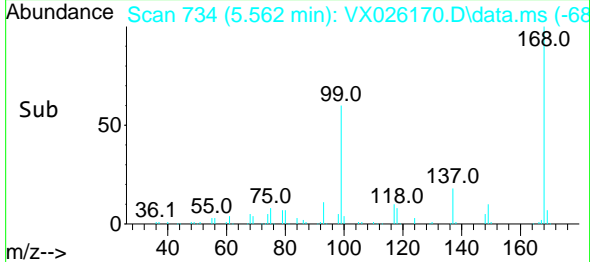
Instrument : MSVOA_X
 Client Sample Id : SLUCE-WAY-122021



Tgt Ion: 168 Resp: 13822
 Ion Ratio Lower Upper
 168 100
 99 60.1 45.8 68.8

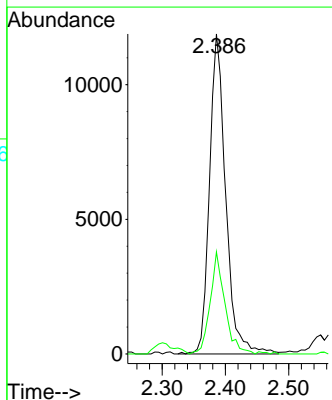
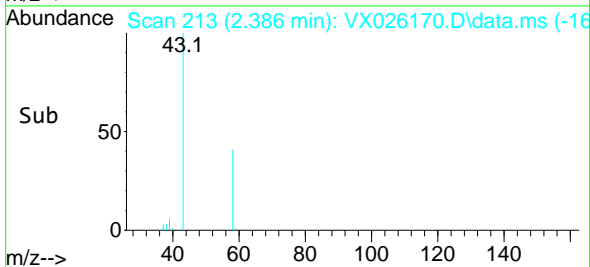
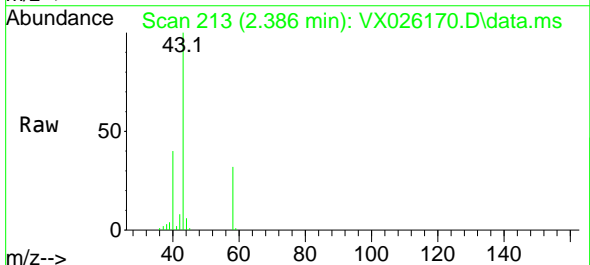
Manual Integrations
 APPROVED

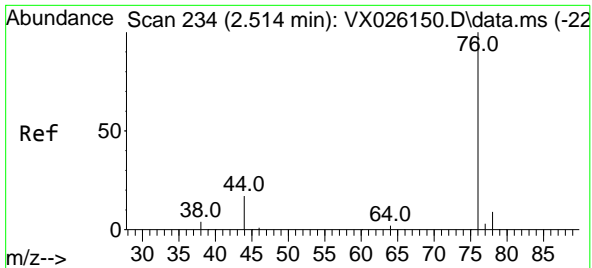
Reviewed By :Mahesh Dadoda 01/01/2022
 Supervised By :Semsettin Yesilyurt 01/01/2022



#16
 Acetone
 Concen: 19.503 ug/l
 RT: 2.386 min Scan# 213
 Delta R.T. -0.000 min
 Lab File: VX026170.D
 Acq: 30 Dec 2021 16:00

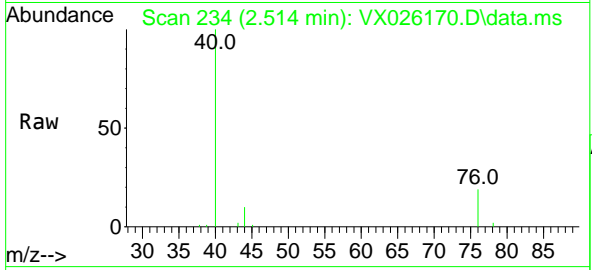
Tgt Ion: 43 Resp: 21130
 Ion Ratio Lower Upper
 43 100
 58 31.9 24.8 37.2





#17
 Carbon Disulfide
 Concen: 0.313 ug/l
 RT: 2.514 min Scan# 21
 Delta R.T. -0.000 min
 Lab File: VX026170.D
 Acq: 30 Dec 2021 16:00

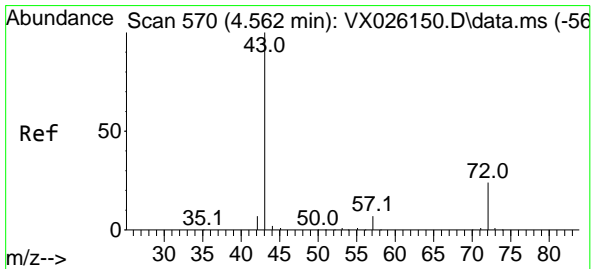
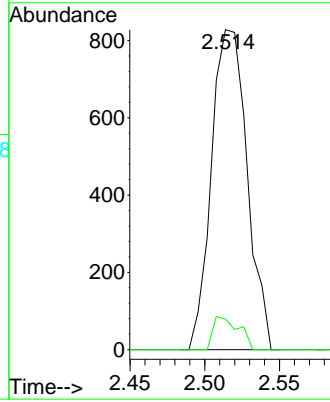
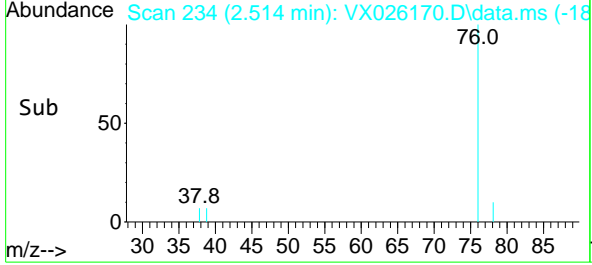
Instrument : MSVOA_X
 Client Sample Id : SLUCE-WAY-122021



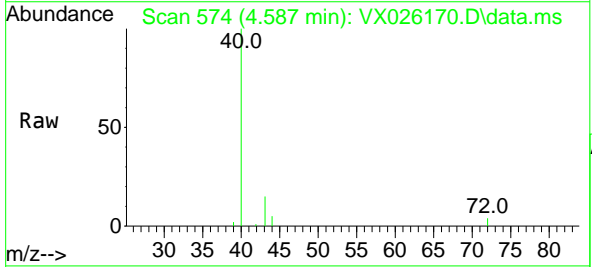
Tgt Ion: 76 Resp: 1374
 Ion Ratio Lower Upper
 76 100
 78 9.5 7.2 10.8

Manual Integrations
APPROVED

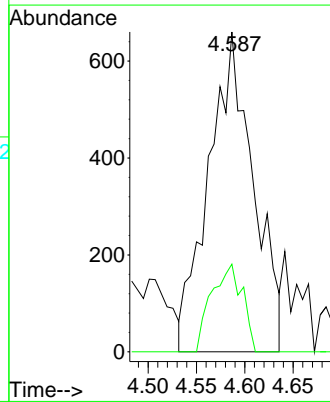
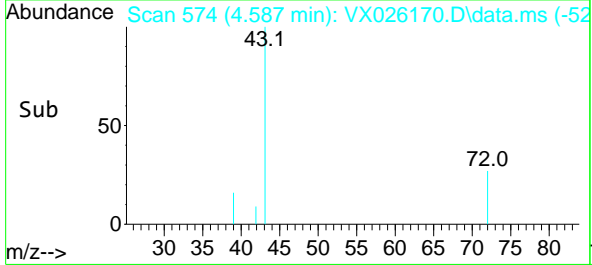
Reviewed By :Mahesh Dadoda 01/01/2022
 Supervised By :Semsettin Yesilyurt 01/01/2022

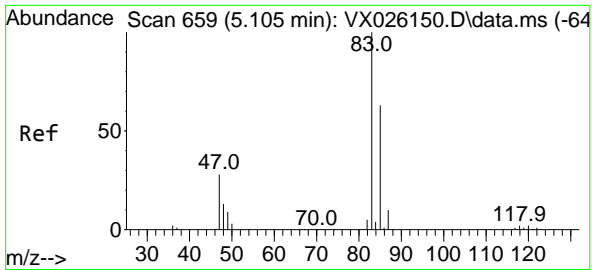


#25
 2-Butanone
 Concen: 1.404 ug/l m
 RT: 4.587 min Scan# 574
 Delta R.T. 0.025 min
 Lab File: VX026170.D
 Acq: 30 Dec 2021 16:00



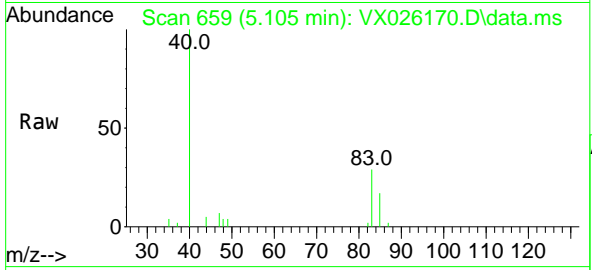
Tgt Ion: 43 Resp: 2119
 Ion Ratio Lower Upper
 43 100
 72 27.4 21.0 31.4





#30
 Chloroform
 Concen: 1.195 ug/l
 RT: 5.105 min Scan# 61
 Delta R.T. -0.000 min
 Lab File: VX026170.D
 Acq: 30 Dec 2021 16:00

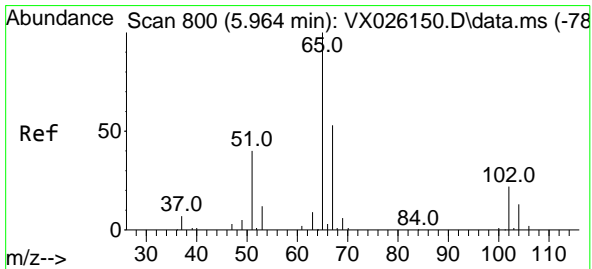
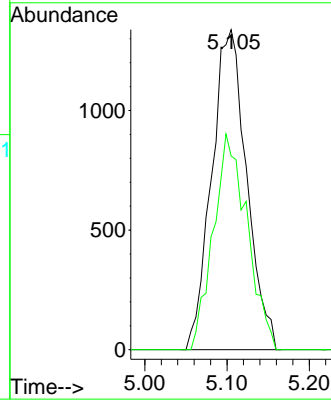
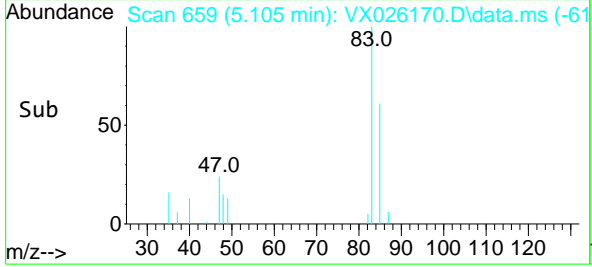
Instrument : MSVOA_X
 Client Sample Id : SLUCE-WAY-122021



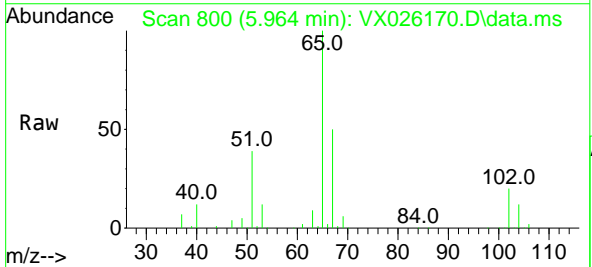
Tgt Ion: 83 Resp: 395
 Ion Ratio Lower Upper
 83 100
 85 60.5 50.6 75.8

Manual Integrations
 APPROVED

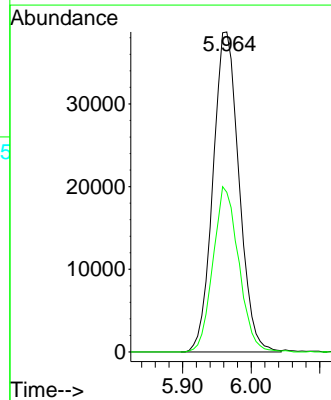
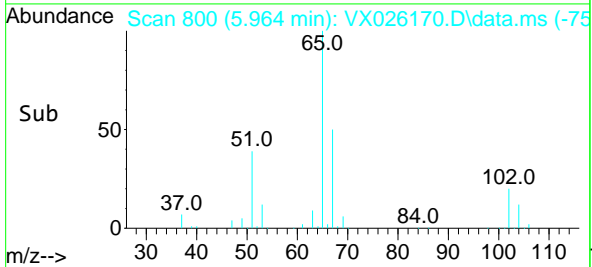
Reviewed By :Mahesh Dadoda 01/01/2022
 Supervised By :Semsettin Yesilyurt 01/01/2022

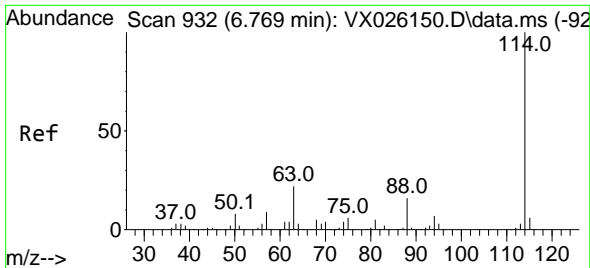


#33
 1,2-Dichloroethane-d4
 Concen: 51.063 ug/l
 RT: 5.964 min Scan# 800
 Delta R.T. 0.000 min
 Lab File: VX026170.D
 Acq: 30 Dec 2021 16:00



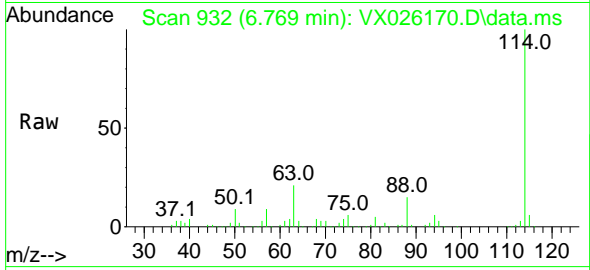
Tgt Ion: 65 Resp: 102109
 Ion Ratio Lower Upper
 65 100
 67 51.0 0.0 103.4





#34
 1,4-Difluorobenzene
 Concen: 50.000 ug/l
 RT: 6.769 min Scan# 911
 Delta R.T. 0.000 min
 Lab File: VX026170.D
 Acq: 30 Dec 2021 16:00

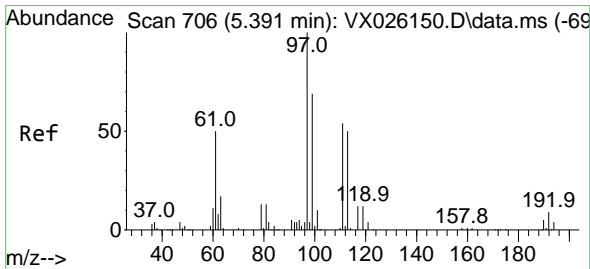
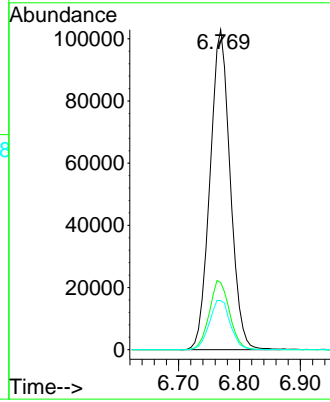
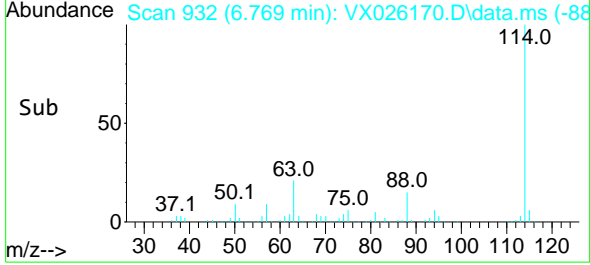
Instrument : MSVOA_X
 ClientSampleId : SLUCE-WAY-122021



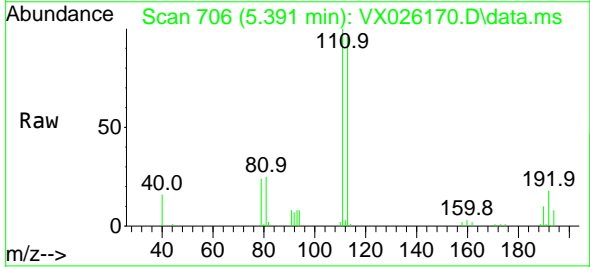
Tgt Ion:114 Resp: 23661
 Ion Ratio Lower Upper
 114 100
 63 21.0 0.0 40.0
 88 15.4 0.0 30.6

Manual Integrations
APPROVED

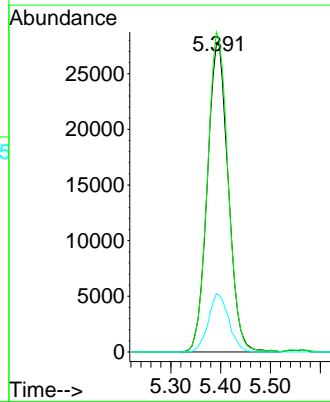
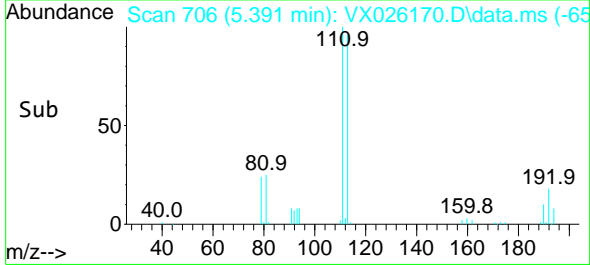
Reviewed By :Mahesh Dadoda 01/01/2022
 Supervised By :Semsettin Yesilyurt 01/01/2022

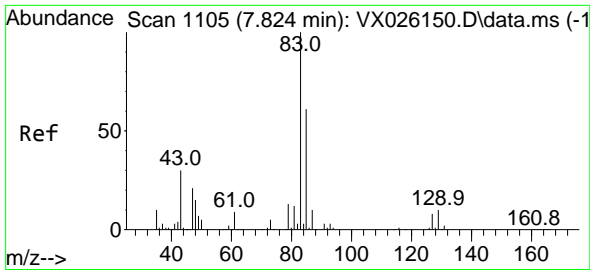


#35
 Dibromofluoromethane
 Concen: 52.714 ug/l
 RT: 5.391 min Scan# 706
 Delta R.T. 0.000 min
 Lab File: VX026170.D
 Acq: 30 Dec 2021 16:00



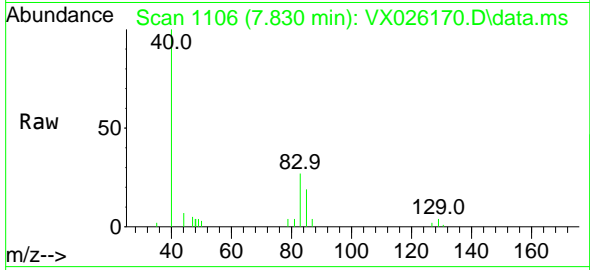
Tgt Ion:113 Resp: 81090
 Ion Ratio Lower Upper
 113 100
 111 102.1 81.8 122.8
 192 18.3 15.0 22.4





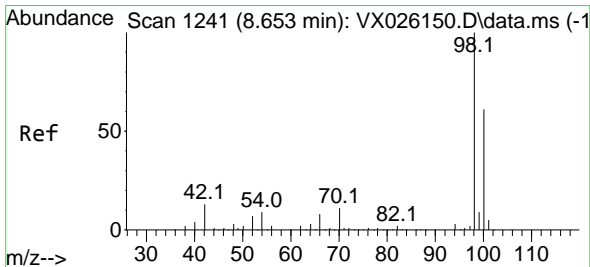
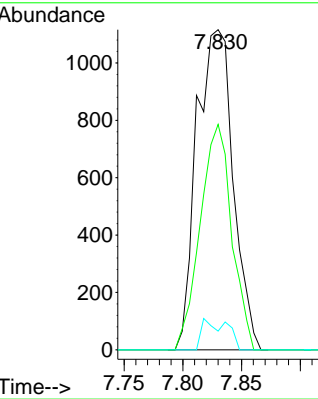
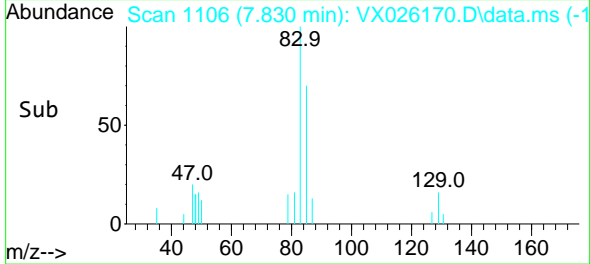
#47
 Bromodichloromethane
 Concen: 0.883 ug/l
 RT: 7.830 min Scan# 1106
 Delta R.T. 0.006 min
 Lab File: VX026170.D
 Acq: 30 Dec 2021 16:00

Instrument : MSVOA_X
 Client Sample Id : SLUCE-WAY-122021

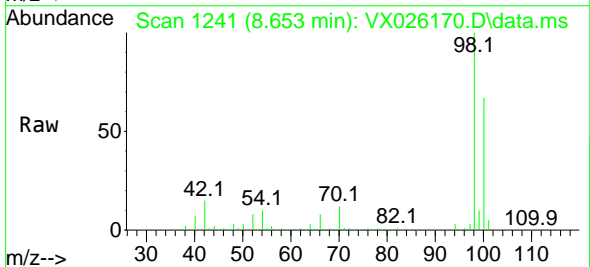


Tgt Ion: 83 Resp: 2414
 Ion Ratio Lower Upper
 83 100
 85 70.4 53.5 80.3
 127 5.8 6.6 10.0

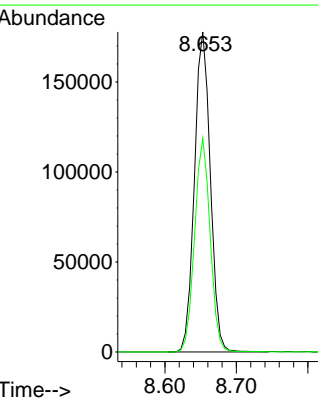
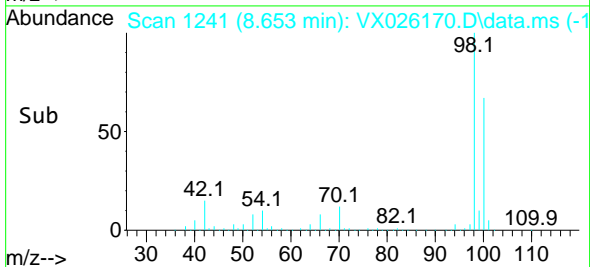
Manual Integrations
APPROVED
 Reviewed By :Mahesh Dadoda 01/01/2022
 Supervised By :Semsettin Yesilyurt 01/01/2022

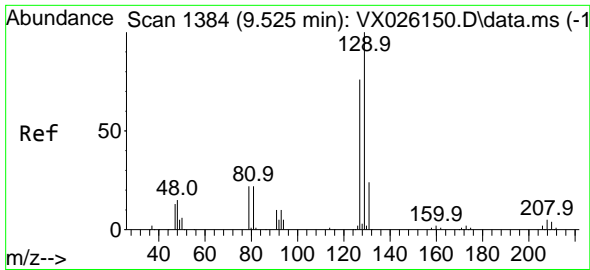


#50
 Toluene-d8
 Concen: 47.971 ug/l
 RT: 8.653 min Scan# 1241
 Delta R.T. -0.000 min
 Lab File: VX026170.D
 Acq: 30 Dec 2021 16:00



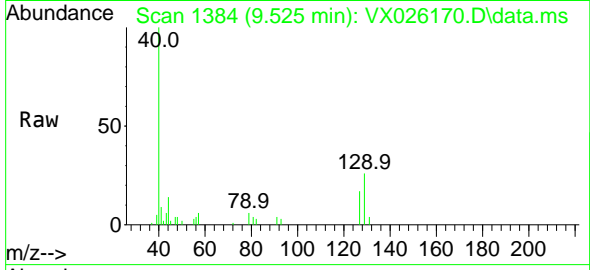
Tgt Ion: 98 Resp: 274481
 Ion Ratio Lower Upper
 98 100
 100 65.3 52.6 78.8





#60
 Dibromochloromethane
 Concen: 0.764 ug/l
 RT: 9.525 min Scan# 11
 Delta R.T. -0.000 min
 Lab File: VX026170.D
 Acq: 30 Dec 2021 16:00

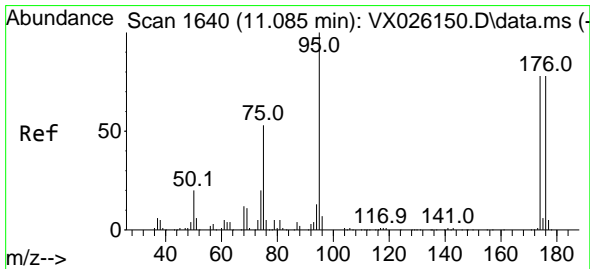
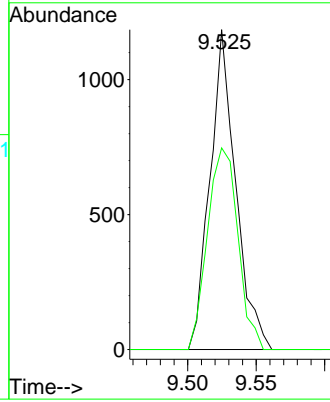
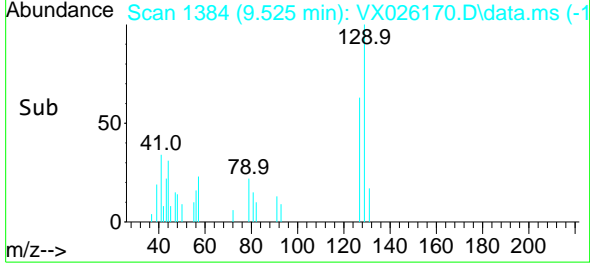
Instrument : MSVOA_X
 Client Sample Id : SLUCE-WAY-122021



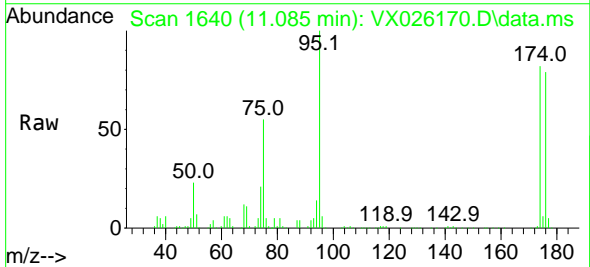
Tgt Ion: 129 Resp: 155
 Ion Ratio Lower Upper
 129 100
 127 74.3 38.6 115.7

Manual Integrations
APPROVED

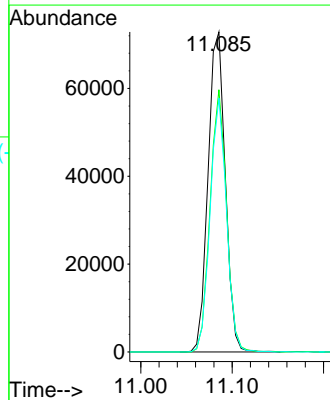
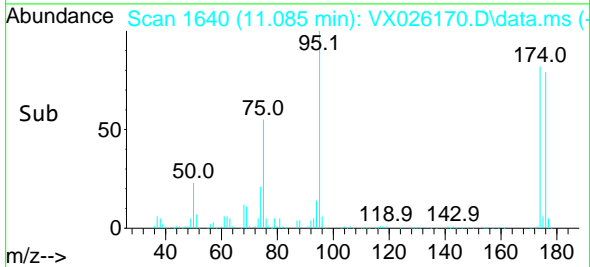
Reviewed By :Mahesh Dadoda 01/01/2022
 Supervised By :Semsettin Yesilyurt 01/01/2022

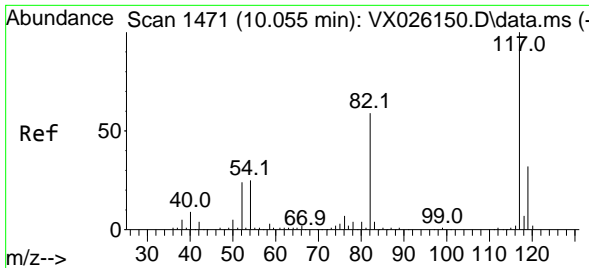


#62
 4-Bromofluorobenzene
 Concen: 46.703 ug/l
 RT: 11.085 min Scan# 1640
 Delta R.T. 0.000 min
 Lab File: VX026170.D
 Acq: 30 Dec 2021 16:00



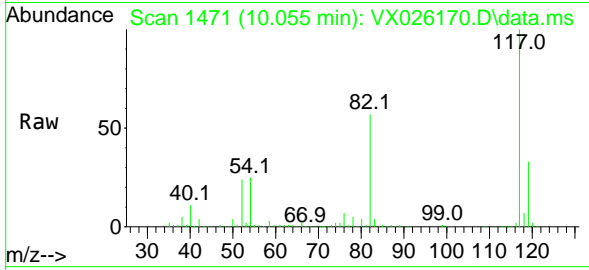
Tgt Ion: 95 Resp: 95129
 Ion Ratio Lower Upper
 95 100
 174 78.3 0.0 157.4
 176 75.3 0.0 154.6





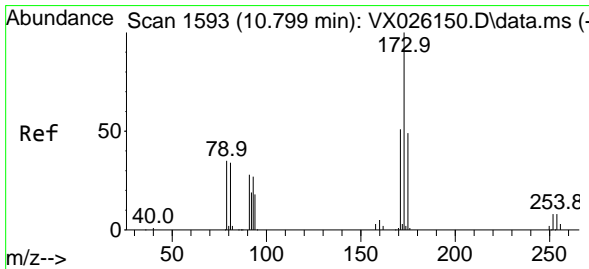
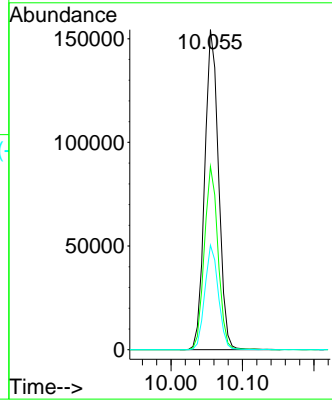
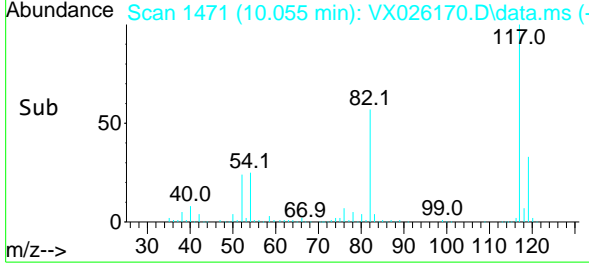
#63
 Chlorobenzene-d5
 Concen: 50.000 ug/l
 RT: 10.055 min Scan# 14
 Delta R.T. 0.000 min
 Lab File: VX026170.D
 Acq: 30 Dec 2021 16:00

Instrument :
 MSVOA_X
ClientSampleId :
 SLUCE-WAY-122021

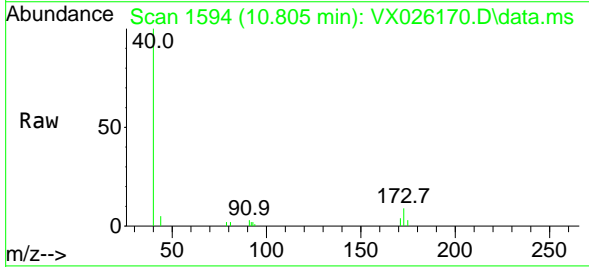


Tgt Ion:117 Resp: 20764
 Ion Ratio Lower Upper
 117 100
 82 57.3 43.8 65.6
 119 32.6 25.2 37.8

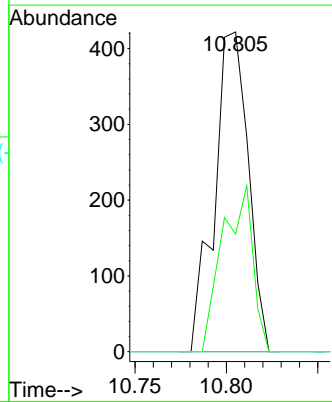
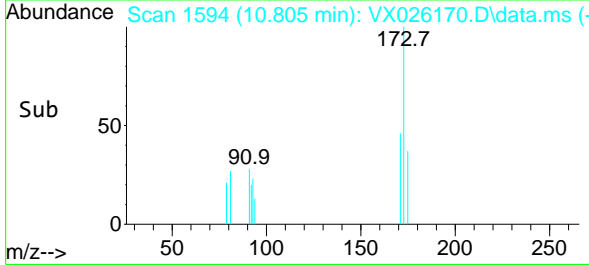
Manual Integrations
APPROVED
 Reviewed By :Mahesh Dadoda 01/01/2022
 Supervised By :Semsettin Yesilyurt 01/01/2022

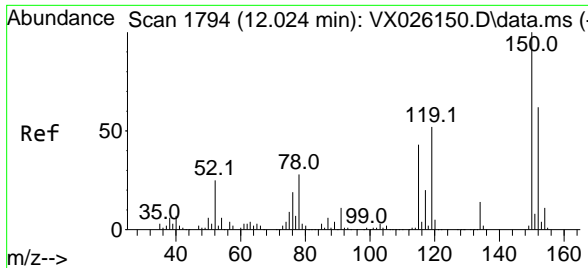


#71
 Bromoform
 Concen: 0.387 ug/l
 RT: 10.805 min Scan# 1594
 Delta R.T. 0.006 min
 Lab File: VX026170.D
 Acq: 30 Dec 2021 16:00



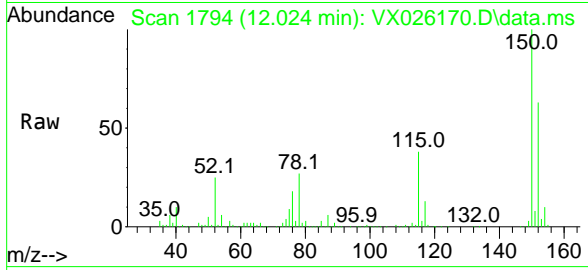
Tgt Ion:173 Resp: 546
 Ion Ratio Lower Upper
 173 100
 175 46.5 24.4 73.4
 254 0.0 0.1 0.1#





#72
 1,4-Dichlorobenzene-d4
 Concen: 50.000 ug/l
 RT: 12.024 min Scan# 11
 Delta R.T. 0.000 min
 Lab File: VX026170.D
 Acq: 30 Dec 2021 16:00

Instrument :
 MSVOA_X
ClientSampleId :
 SLUCE-WAY-122021



Tgt Ion:152 Resp: 90798
 Ion Ratio Lower Upper
 152 100
 115 60.4 41.3 123.9
 150 157.5 0.0 351.8

Manual Integrations
APPROVED
 Reviewed By :Mahesh Dadoda 01/01/2022
 Supervised By :Semsettin Yesilyurt 01/01/2022

