

Data Path : Z:\voasrv\HPCHEM1\MSVOA\_X\Data\VX123124\  
 Data File : VX044562.D  
 Acq On : 30 Dec 2024 22:21  
 Operator : JC/MD  
 Sample : P5376-18  
 Misc : 5.0mL/MSVOA\_X/WATER  
 ALS Vial : 24 Sample Multiplier: 1

Instrument :  
 MSVOA\_X  
 ClientSampleId :  
 TT119S1-20241219

Quant Time: Dec 31 00:40:01 2024  
 Quant Method : Z:\voasrv\HPCHEM1\MSVOA\_X\Method\82X121124W.M  
 Quant Title : SW846 8260  
 QLast Update : Thu Dec 12 04:28:14 2024  
 Response via : Initial Calibration

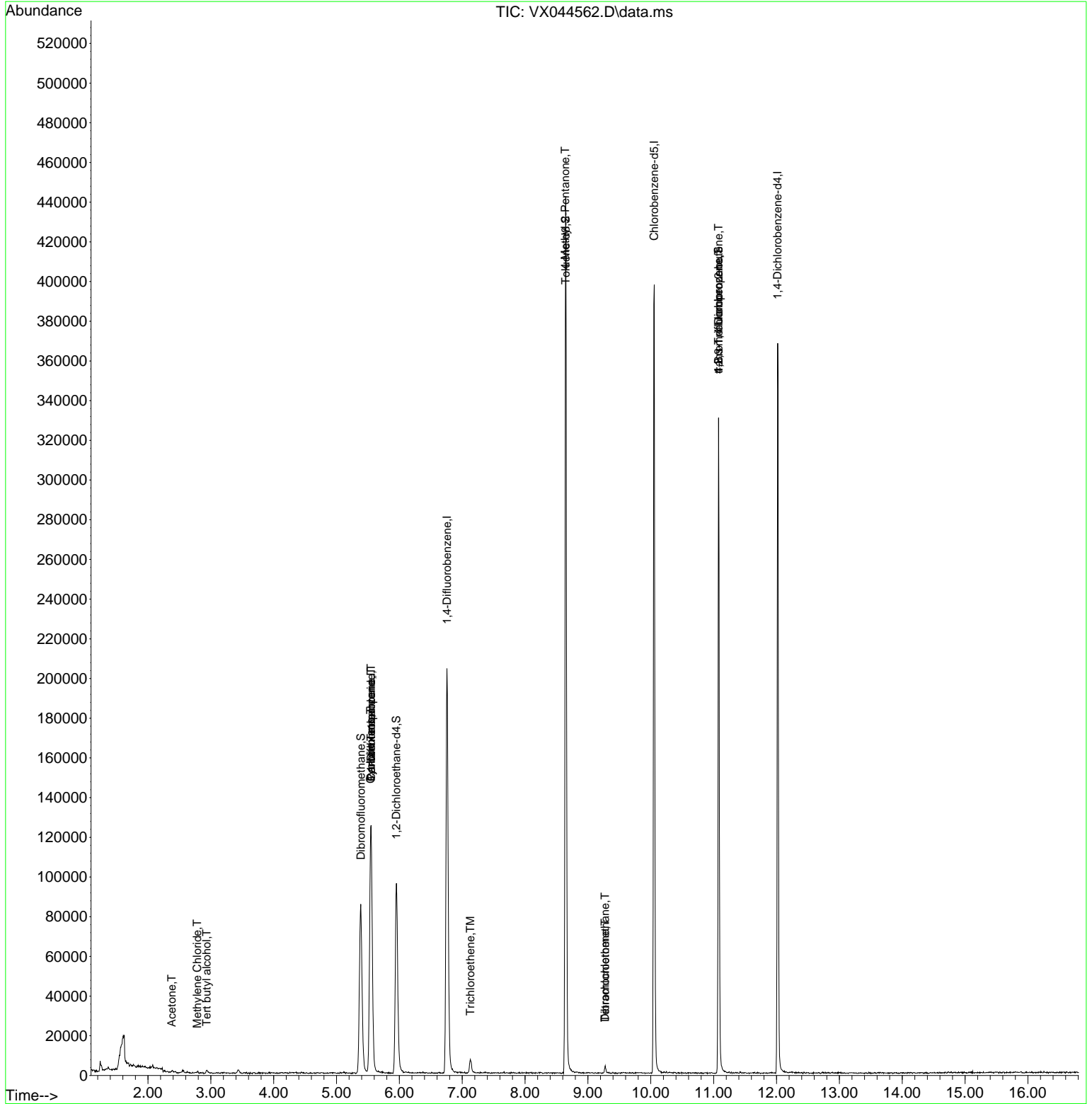
Compound	R.T.	QIon	Response	Conc	Units	Dev(Min)
-----						
Internal Standards						
1) Pentafluorobenzene	5.550	168	119469	50.000	ug/l	0.00
34) 1,4-Difluorobenzene	6.757	114	211589	50.000	ug/l	0.00
63) Chlorobenzene-d5	10.055	117	185760	50.000	ug/l	0.00
72) 1,4-Dichlorobenzene-d4	12.018	152	75337	50.000	ug/l	0.00
System Monitoring Compounds						
33) 1,2-Dichloroethane-d4	5.952	65	94325	45.031	ug/l	0.00
Spiked Amount	50.000	Range	74 - 125	Recovery	=	90.060%
35) Dibromofluoromethane	5.385	113	73762	50.334	ug/l	0.00
Spiked Amount	50.000	Range	75 - 124	Recovery	=	100.660%
50) Toluene-d8	8.647	98	260390	52.668	ug/l	0.00
Spiked Amount	50.000	Range	86 - 113	Recovery	=	105.340%
62) 4-Bromofluorobenzene	11.079	95	83857	48.541	ug/l	0.00
Spiked Amount	50.000	Range	77 - 121	Recovery	=	97.080%
Target Compounds						
					Qvalue	
11) Tert butyl alcohol	2.934	59	451	1.528	ug/l #	71
16) Acetone	2.380	43	969	1.135	ug/l	90
20) Methylene Chloride	2.782	84	350	0.218	ug/l #	73
31) Cyclohexane	5.544	56	3000	1.327	ug/l #	36
36) 1,1-Dichloropropene	5.550	75	9806	5.177	ug/l #	51
38) Carbon Tetrachloride	5.550	117	12860	6.306	ug/l #	18
44) Trichloroethene	7.129	130	2900	2.022	ug/l	62
51) 4-Methyl-2-Pentanone	8.641	43	1498	0.637	ug/l #	1
60) Dibromochloromethane	9.275	129	642	1.662	ug/l #	11
64) Tetrachloroethene	9.275	164	620	0.503	ug/l #	76
76) 1,2,3-Trichloropropane	11.079	75	43900	26.098	ug/l #	36
81) trans-1,4-Dichloro-2-b...	11.079	75	43900	72.020	ug/l #	4
-----						

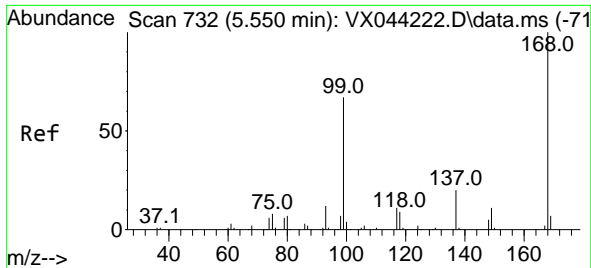
(#) = qualifier out of range (m) = manual integration (+) = signals summed

Data Path : Z:\voasrv\HPCHEM1\MSVOA\_X\Data\VX123124\  
 Data File : VX044562.D  
 Acq On : 30 Dec 2024 22:21  
 Operator : JC/MD  
 Sample : P5376-18  
 Misc : 5.0mL/MSVOA\_X/WATER  
 ALS Vial : 24 Sample Multiplier: 1

Instrument :  
 MSVOA\_X  
 ClientSampleId :  
 TT119S1-20241219

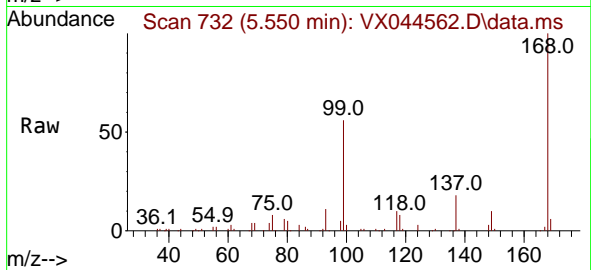
Quant Time: Dec 31 00:40:01 2024  
 Quant Method : Z:\voasrv\HPCHEM1\MSVOA\_X\Method\82X121124W.M  
 Quant Title : SW846 8260  
 QLast Update : Thu Dec 12 04:28:14 2024  
 Response via : Initial Calibration



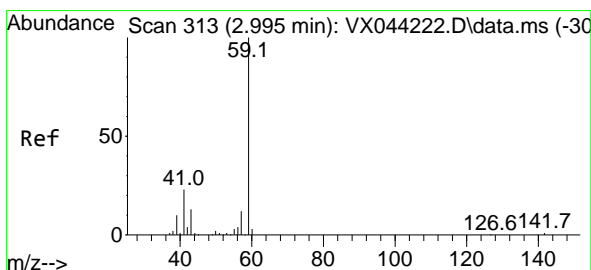
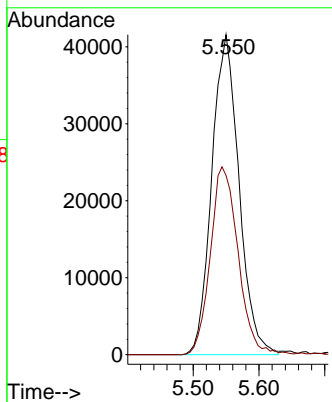
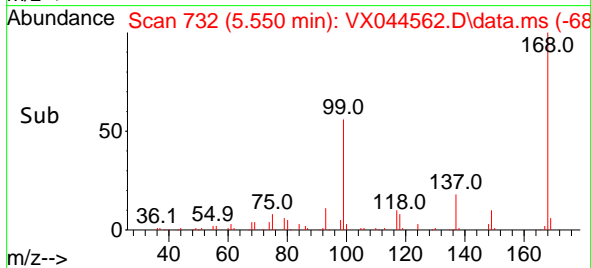


#1  
 Pentafluorobenzene  
 Concen: 50.000 ug/l  
 RT: 5.550 min Scan# 71  
 Delta R.T. -0.000 min  
 Lab File: VX044562.D  
 Acq: 30 Dec 2024 22:21

Instrument : MSVOA\_X  
 ClientSampleId : TT119S1-20241219

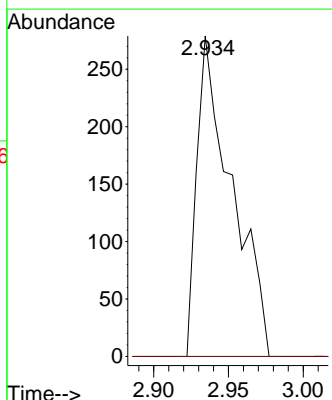
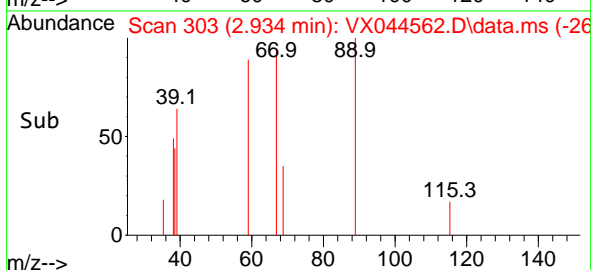
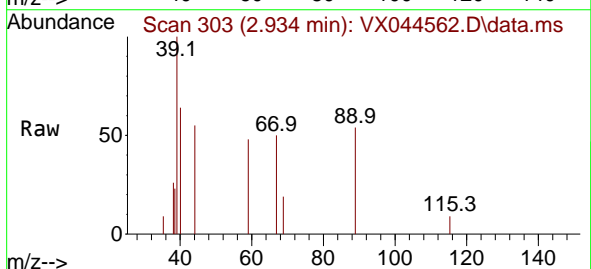


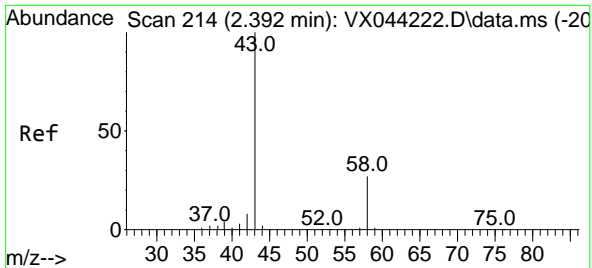
Tgt Ion:168 Resp: 119469  
 Ion Ratio Lower Upper  
 168 100  
 99 56.0 53.4 80.0



#11  
 Tert butyl alcohol  
 Concen: 1.528 ug/l  
 RT: 2.934 min Scan# 303  
 Delta R.T. -0.061 min  
 Lab File: VX044562.D  
 Acq: 30 Dec 2024 22:21

Tgt Ion: 59 Resp: 451  
 Ion Ratio Lower Upper  
 59 100  
 57 0.0 8.8 13.2#

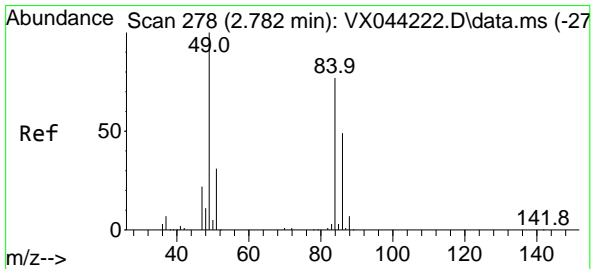
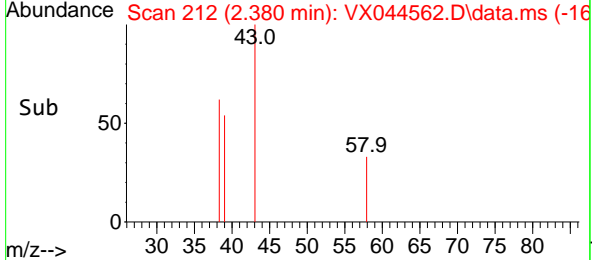
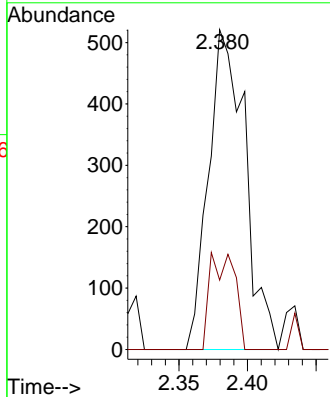
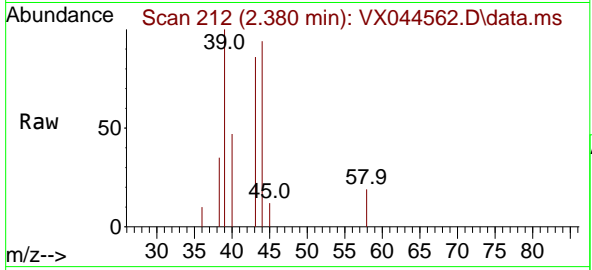




#16  
 Acetone  
 Concen: 1.135 ug/l  
 RT: 2.380 min Scan# 214  
 Delta R.T. -0.012 min  
 Lab File: VX044562.D  
 Acq: 30 Dec 2024 22:21

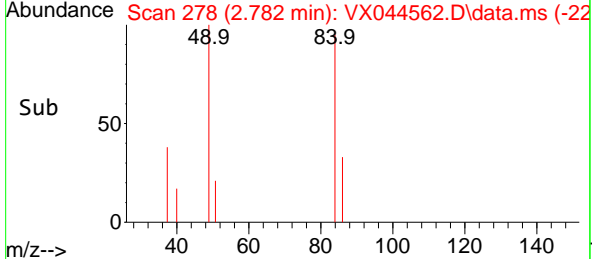
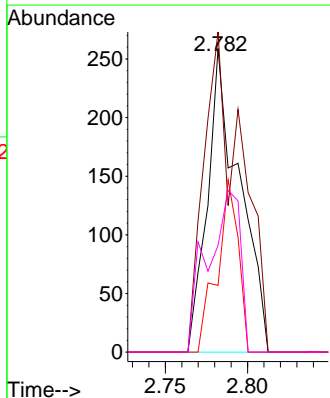
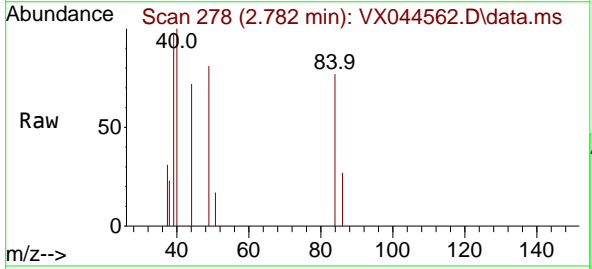
Instrument : MSVOA\_X  
 ClientSampleId : TT119S1-20241219

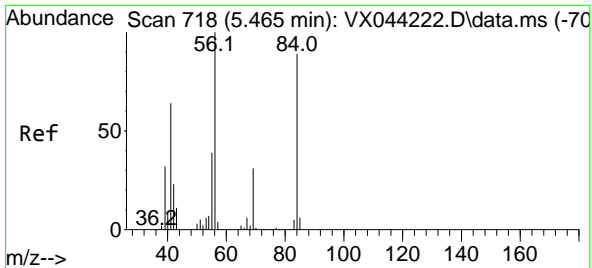
Tgt Ion	Resp	Lower	Upper
43	100		
58	21.7	21.6	32.4



#20  
 Methylene Chloride  
 Concen: 0.218 ug/l  
 RT: 2.782 min Scan# 278  
 Delta R.T. -0.000 min  
 Lab File: VX044562.D  
 Acq: 30 Dec 2024 22:21

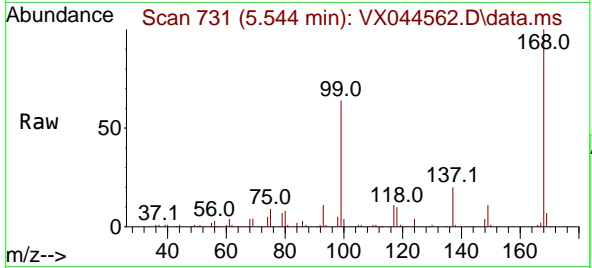
Tgt Ion	Resp	Lower	Upper
84	100		
49	105.4	104.2	156.4
51	22.0	32.2	48.4#
86	35.1	50.9	76.3#



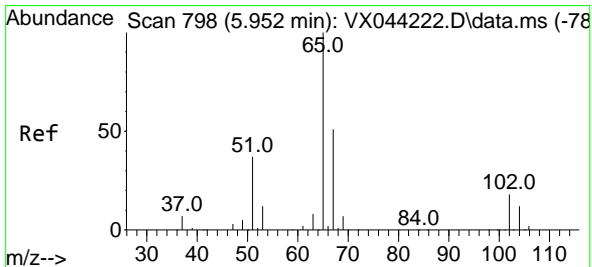
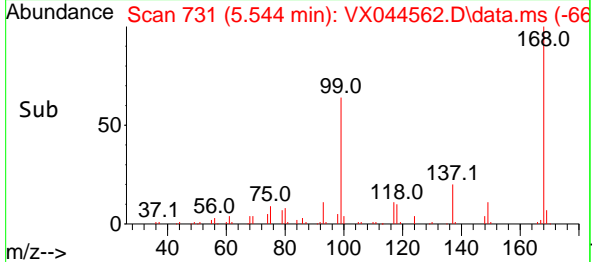
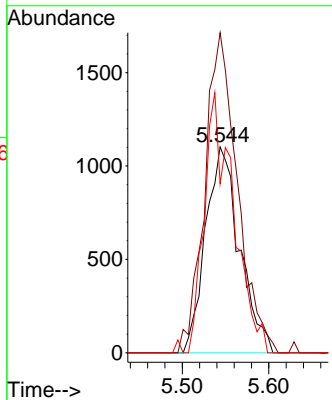


#31  
 Cyclohexane  
 Concen: 1.327 ug/l  
 RT: 5.544 min Scan# 718  
 Delta R.T. 0.079 min  
 Lab File: VX044562.D  
 Acq: 30 Dec 2024 22:21

Instrument : MSVOA\_X  
 ClientSampleId : TT119S1-20241219

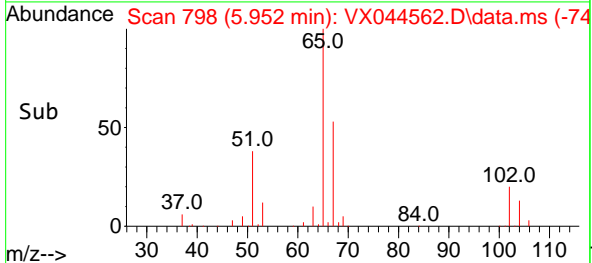
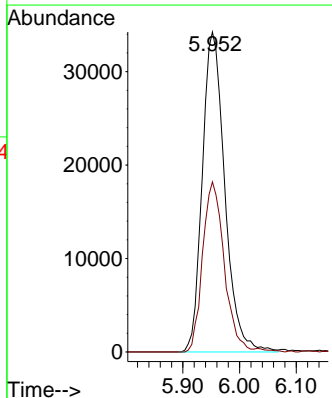
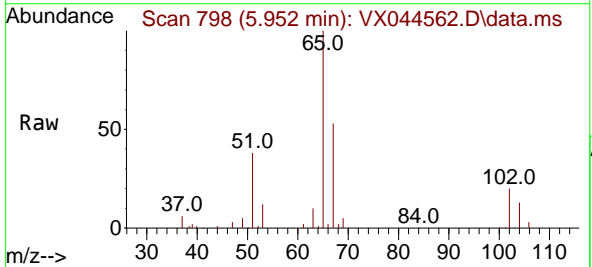


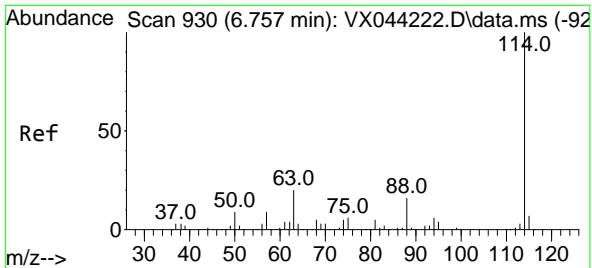
Tgt Ion: 56 Resp: 3000  
 Ion Ratio Lower Upper  
 56 100  
 69 155.5 24.7 37.1#  
 84 82.1 71.0 106.6



#33  
 1,2-Dichloroethane-d4  
 Concen: 45.031 ug/l  
 RT: 5.952 min Scan# 798  
 Delta R.T. -0.000 min  
 Lab File: VX044562.D  
 Acq: 30 Dec 2024 22:21

Tgt Ion: 65 Resp: 94325  
 Ion Ratio Lower Upper  
 65 100  
 67 50.9 0.0 101.6

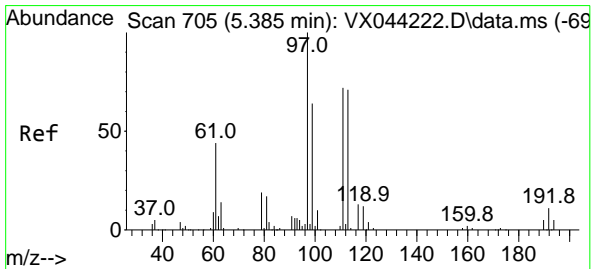
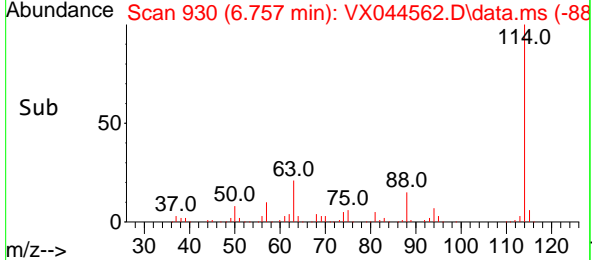
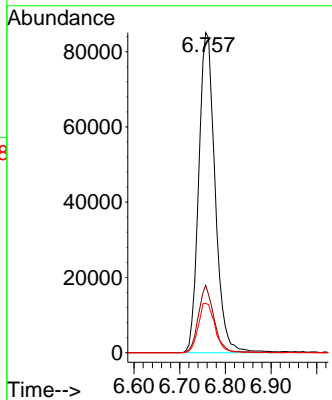
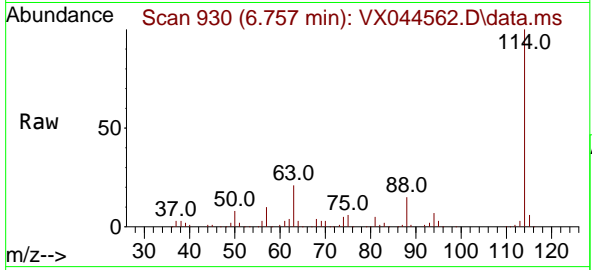




#34  
 1,4-Difluorobenzene  
 Concen: 50.000 ug/l  
 RT: 6.757 min Scan# 911  
 Delta R.T. -0.000 min  
 Lab File: VX044562.D  
 Acq: 30 Dec 2024 22:21

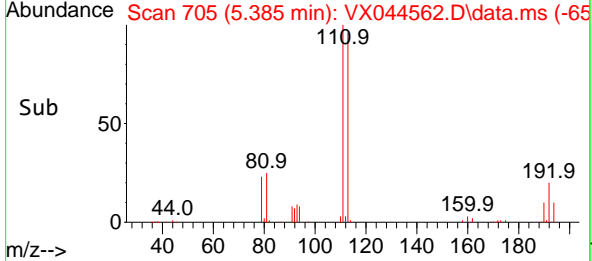
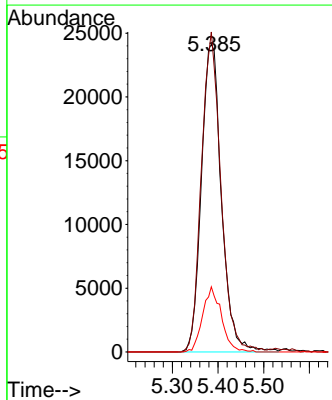
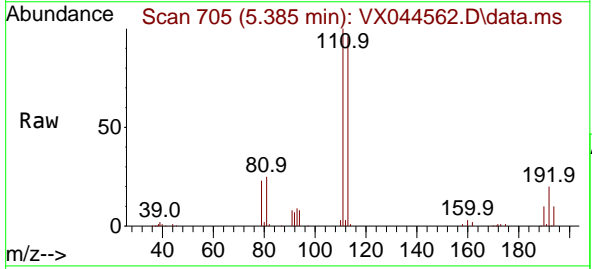
Instrument : MSVOA\_X  
 ClientSampleId : TT119S1-20241219

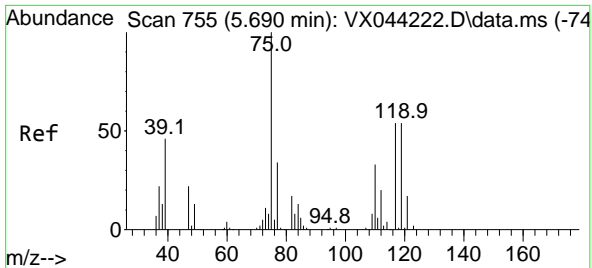
Tgt Ion	Resp	Ion Ratio	Lower	Upper
114	211589	100		
63		21.0	0.0	40.6
88		15.4	0.0	31.8



#35  
 Dibromofluoromethane  
 Concen: 50.334 ug/l  
 RT: 5.385 min Scan# 705  
 Delta R.T. -0.000 min  
 Lab File: VX044562.D  
 Acq: 30 Dec 2024 22:21

Tgt Ion	Resp	Ion Ratio	Lower	Upper
113	73762	100		
111		100.8	80.4	120.6
192		19.7	13.3	19.9

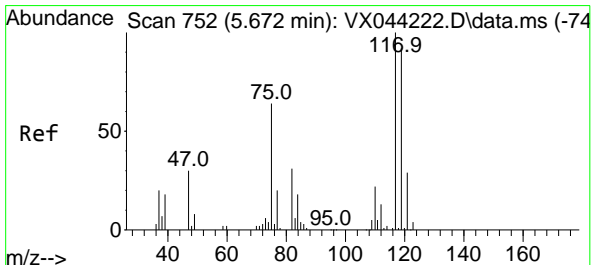
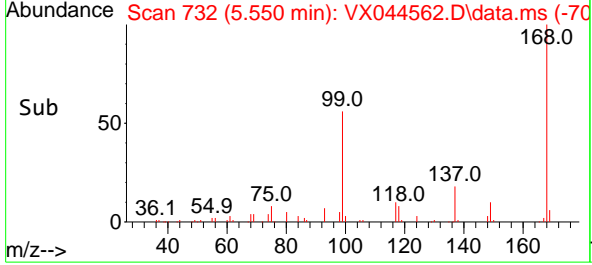
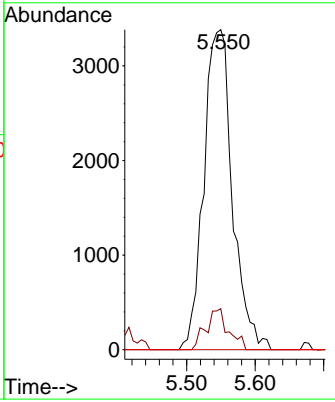
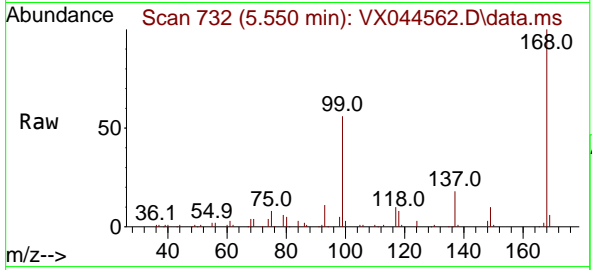




#36  
 1,1-Dichloropropene  
 Concen: 5.177 ug/l  
 RT: 5.550 min Scan# 711  
 Delta R.T. -0.140 min  
 Lab File: VX044562.D  
 Acq: 30 Dec 2024 22:21

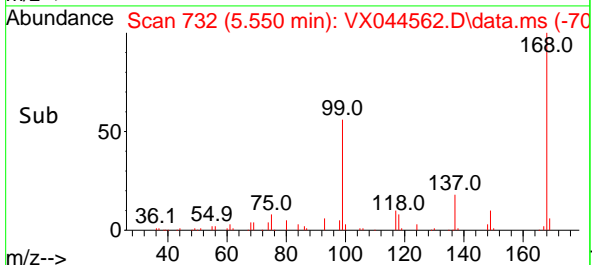
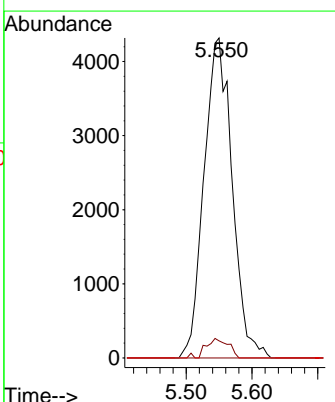
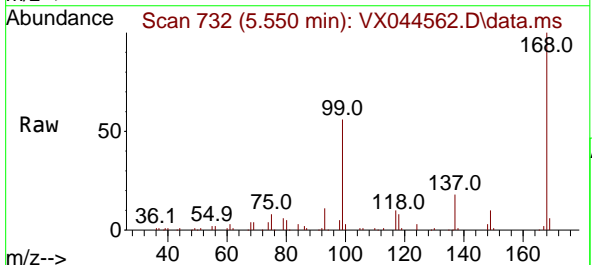
Instrument : MSVOA\_X  
 ClientSampleId : TT119S1-20241219

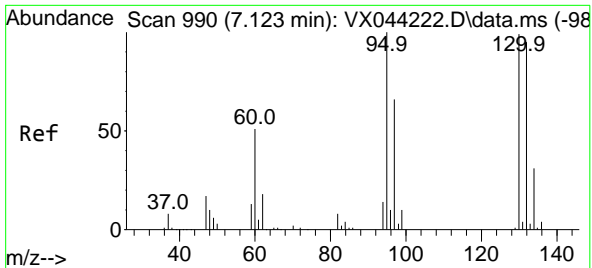
Tgt Ion	Resp	Lower	Upper
75	9806		
75	100		
110	10.1	17.3	51.7#
77	0.0	25.4	38.0#



#38  
 Carbon Tetrachloride  
 Concen: 6.306 ug/l  
 RT: 5.550 min Scan# 732  
 Delta R.T. -0.122 min  
 Lab File: VX044562.D  
 Acq: 30 Dec 2024 22:21

Tgt Ion	Resp	Lower	Upper
117	12860		
117	100		
119	5.3	74.2	111.4#
121	0.0	23.0	34.6#

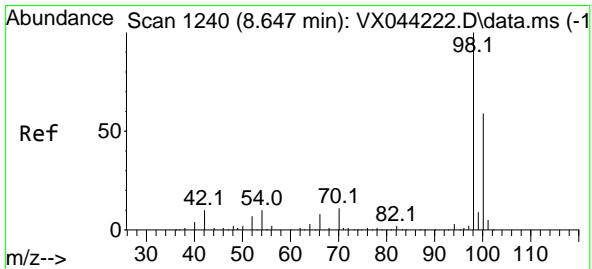
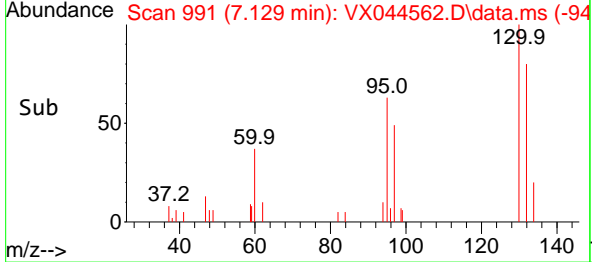
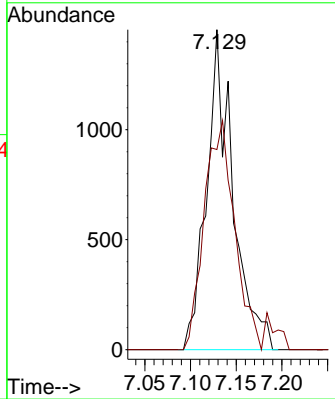
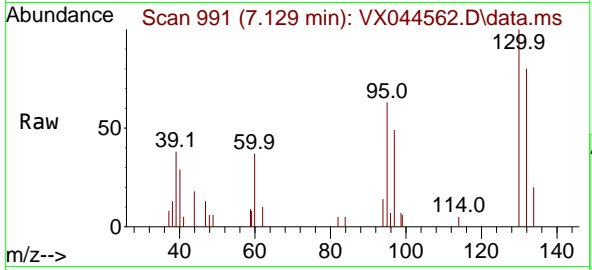




#44  
 Trichloroethene  
 Concen: 2.022 ug/l  
 RT: 7.129 min Scan# 991  
 Delta R.T. 0.006 min  
 Lab File: VX044562.D  
 Acq: 30 Dec 2024 22:21

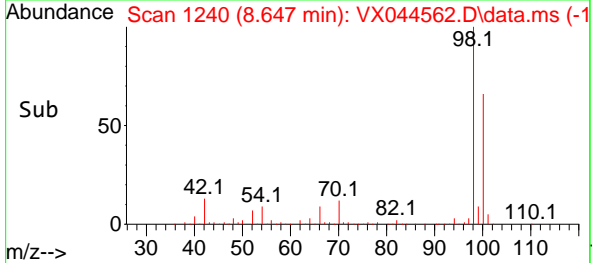
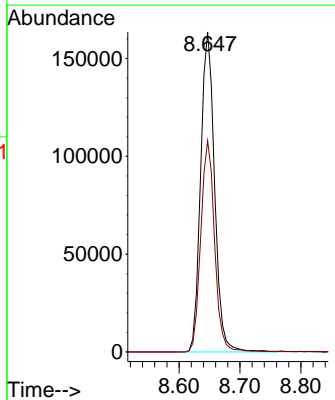
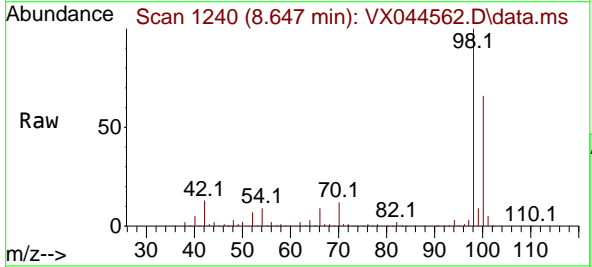
Instrument : MSVOA\_X  
 ClientSampleId : TT119S1-20241219

Tgt Ion:130 Resp: 2900  
 Ion Ratio Lower Upper  
 130 100  
 95 62.5 0.0 201.4

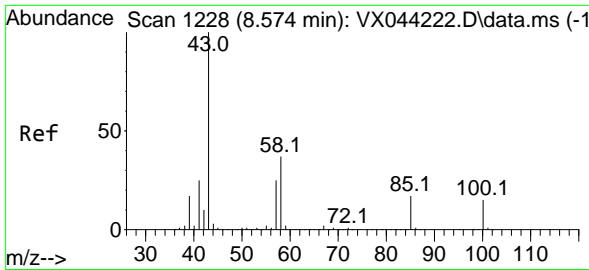


#50  
 Toluene-d8  
 Concen: 52.668 ug/l  
 RT: 8.647 min Scan# 1240  
 Delta R.T. -0.000 min  
 Lab File: VX044562.D  
 Acq: 30 Dec 2024 22:21

Tgt Ion: 98 Resp: 260390  
 Ion Ratio Lower Upper  
 98 100  
 100 65.4 51.5 77.3



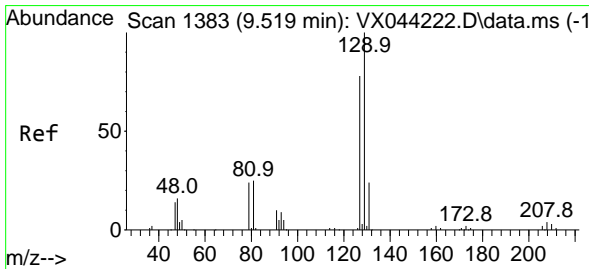
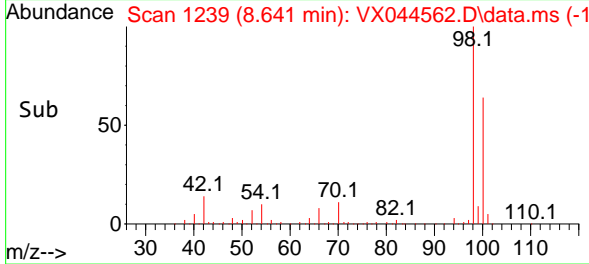
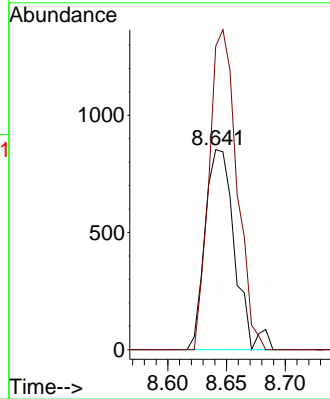
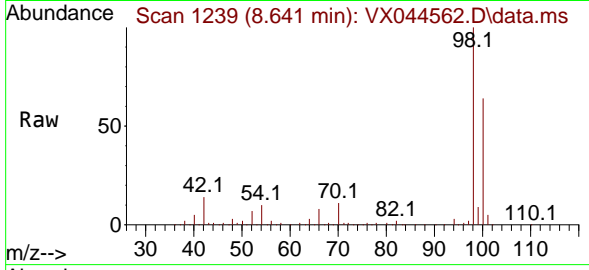




#51  
 4-Methyl-2-Pentanone  
 Concen: 0.637 ug/l  
 RT: 8.641 min Scan# 1111  
 Delta R.T. 0.067 min  
 Lab File: VX044562.D  
 Acq: 30 Dec 2024 22:21

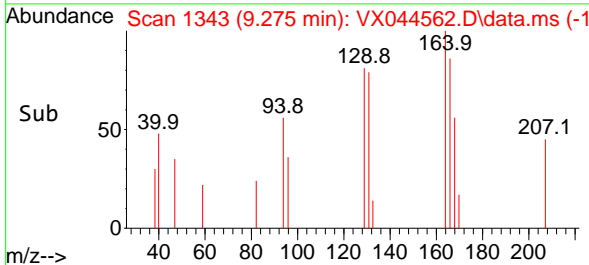
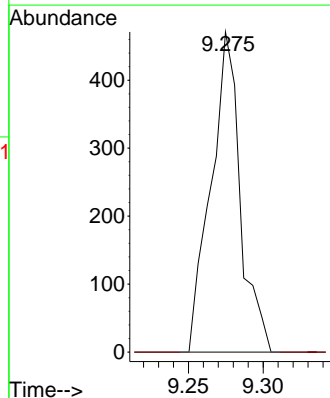
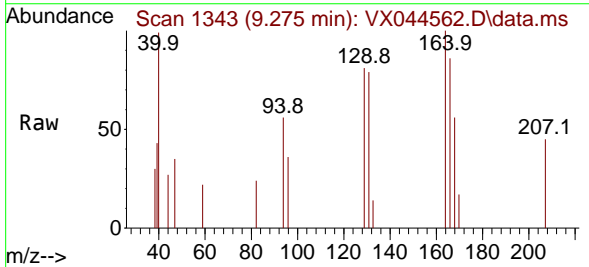
Instrument : MSVOA\_X  
 ClientSampleId : TT119S1-20241219

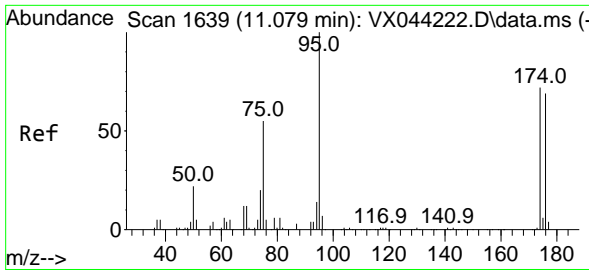
Tgt Ion: 43 Resp: 1498  
 Ion Ratio Lower Upper  
 43 100  
 58 150.1 29.4 44.0#



#60  
 Dibromochloromethane  
 Concen: 1.662 ug/l  
 RT: 9.275 min Scan# 1343  
 Delta R.T. -0.244 min  
 Lab File: VX044562.D  
 Acq: 30 Dec 2024 22:21

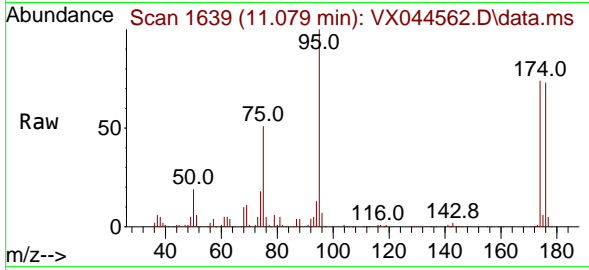
Tgt Ion: 129 Resp: 642  
 Ion Ratio Lower Upper  
 129 100  
 127 0.0 38.5 115.3#



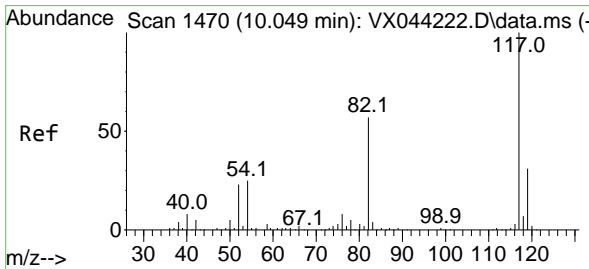
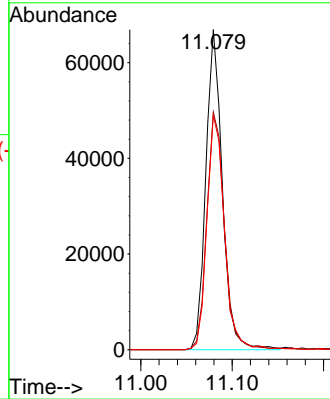
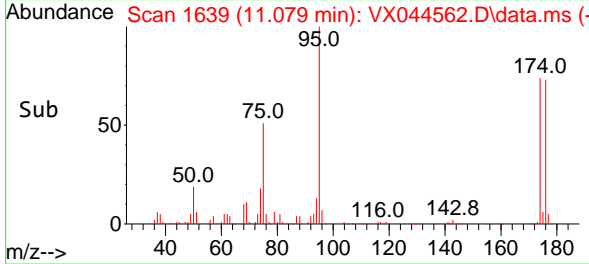


#62  
 4-Bromofluorobenzene  
 Concen: 48.541 ug/l  
 RT: 11.079 min Scan# 1  
 Delta R.T. -0.000 min  
 Lab File: VX044562.D  
 Acq: 30 Dec 2024 22:21

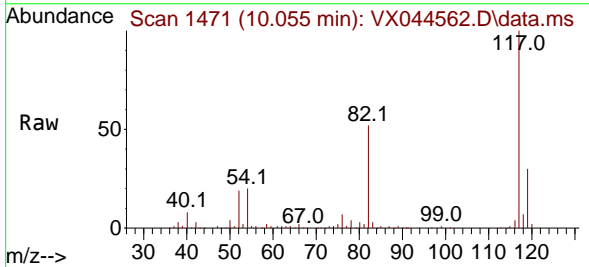
Instrument :  
 MSVOA\_X  
 ClientSampleId :  
 TT119S1-20241219



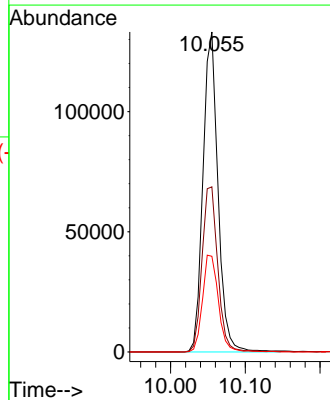
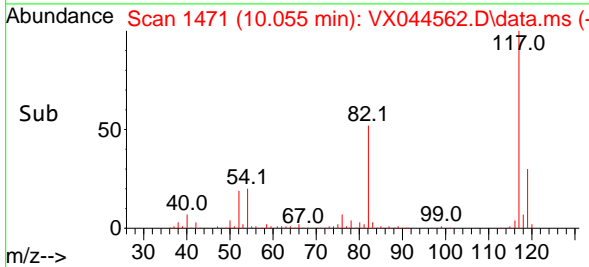
Tgt Ion: 95 Resp: 83857  
 Ion Ratio Lower Upper  
 95 100  
 174 79.2 0.0 145.8  
 176 77.7 0.0 137.8

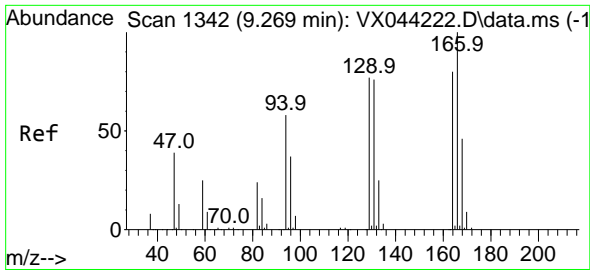


#63  
 Chlorobenzene-d5  
 Concen: 50.000 ug/l  
 RT: 10.055 min Scan# 1471  
 Delta R.T. 0.006 min  
 Lab File: VX044562.D  
 Acq: 30 Dec 2024 22:21



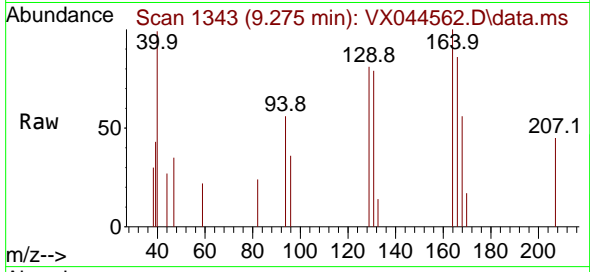
Tgt Ion: 117 Resp: 185760  
 Ion Ratio Lower Upper  
 117 100  
 82 51.6 45.8 68.8  
 119 29.9 25.0 37.4



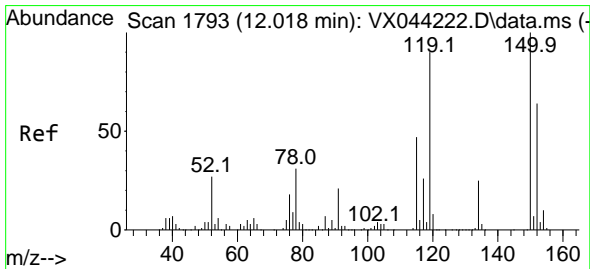
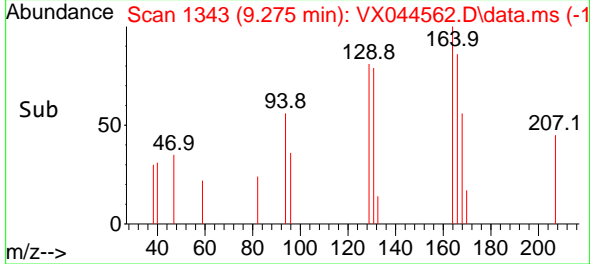
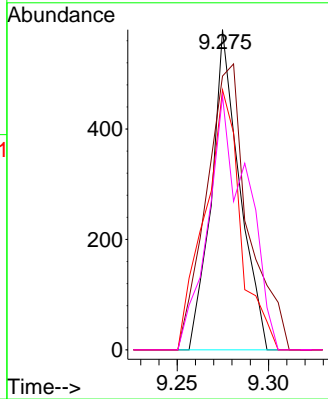


#64  
 Tetrachloroethene  
 Concen: 0.503 ug/l  
 RT: 9.275 min Scan# 11  
 Delta R.T. 0.006 min  
 Lab File: VX044562.D  
 Acq: 30 Dec 2024 22:21

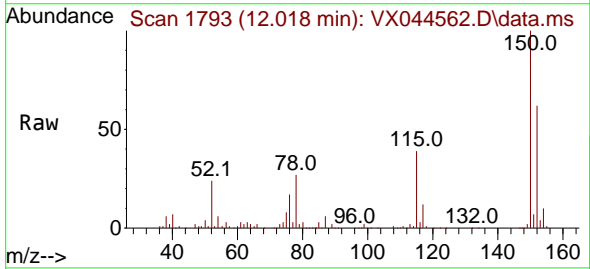
Instrument :  
 MSVOA\_X  
 ClientSampleId :  
 TT119S1-20241219



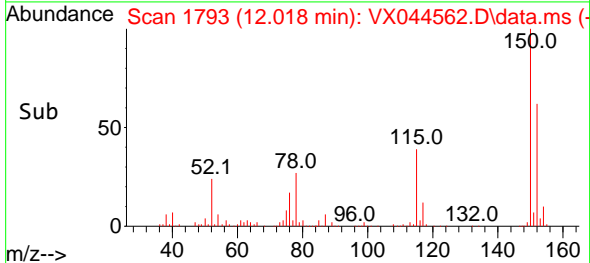
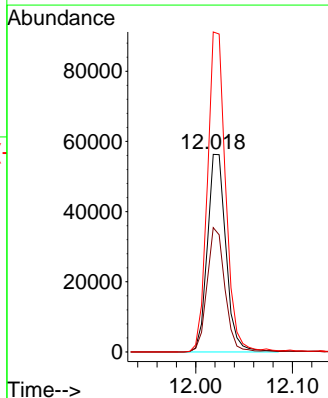
Tgt Ion:164 Resp: 620  
 Ion Ratio Lower Upper  
 164 100  
 166 85.5 100.4 150.6#  
 129 81.2 77.2 115.8  
 131 79.3 76.2 114.2

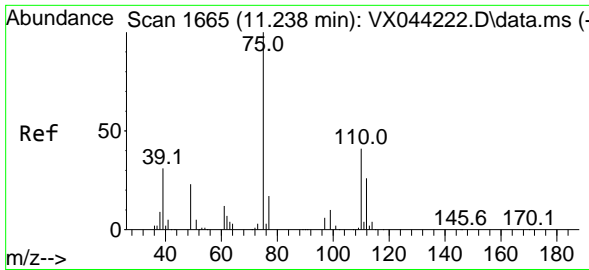


#72  
 1,4-Dichlorobenzene-d4  
 Concen: 50.000 ug/l  
 RT: 12.018 min Scan# 1793  
 Delta R.T. -0.000 min  
 Lab File: VX044562.D  
 Acq: 30 Dec 2024 22:21



Tgt Ion:152 Resp: 75337  
 Ion Ratio Lower Upper  
 152 100  
 115 60.7 44.5 133.3  
 150 158.7 0.0 353.8

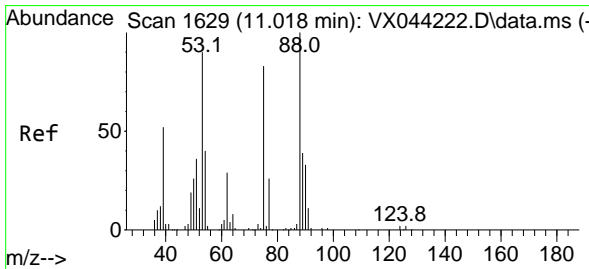
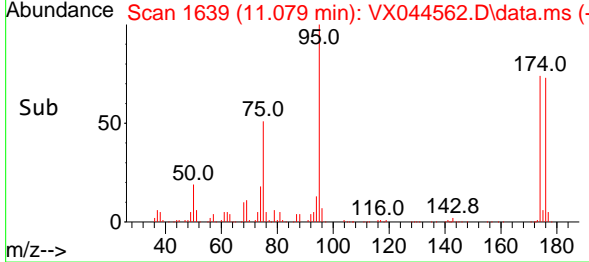
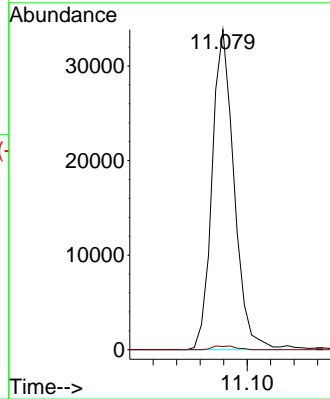
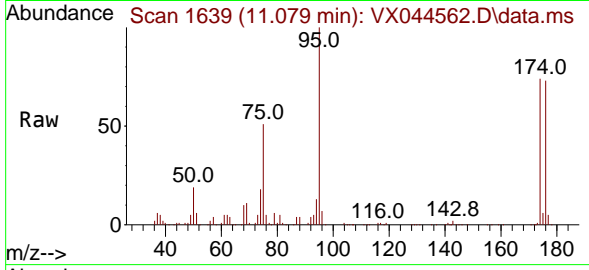




#76  
 1,2,3-Trichloropropane  
 Concen: 26.098 ug/l  
 RT: 11.079 min Scan# 1639  
 Delta R.T. -0.159 min  
 Lab File: VX044562.D  
 Acq: 30 Dec 2024 22:21

Instrument : MSVOA\_X  
 ClientSampleId : TT119S1-20241219

Tgt Ion: 75 Resp: 43900  
 Ion Ratio Lower Upper  
 75 100  
 77 1.2 20.9 62.7#



#81  
 trans-1,4-Dichloro-2-butene  
 Concen: 72.020 ug/l  
 RT: 11.079 min Scan# 1639  
 Delta R.T. 0.061 min  
 Lab File: VX044562.D  
 Acq: 30 Dec 2024 22:21

Tgt Ion: 75 Resp: 43900  
 Ion Ratio Lower Upper  
 75 100  
 53 0.0 93.6 140.4#  
 89 0.0 37.3 55.9#

