

Data Path : Z:\voasrv\HPCHEM1\MSVOA_X\Data\VX123124\
 Data File : VX044548.D
 Acq On : 30 Dec 2024 16:55
 Operator : JC/MD
 Sample : P5376-20
 Misc : 5.0mL/MSVOA_X/WATER
 ALS Vial : 10 Sample Multiplier: 1

Instrument :
 MSVOA_X
 ClientSampleId :
 FB03-20241219

Integration Parameters: RTEINT.P
 Integrator: RTE
 Smoothing : ON
 Sampling : 1
 Start Thrs: 0.2
 Stop Thrs : 0
 Filtering: 5
 Min Area: 3 % of largest Peak
 Max Peaks: 100
 Peak Location: TOP

If leading or trailing edge < 100 prefer < Baseline drop else tangent >
 Peak separation: 5

Method : Z:\voasrv\HPCHEM1\MSVOA_X\Method\82X121124W.M
 Title : SW846 8260

Signal : TIC: VX044548.D\data.ms

peak #	R.T. min	first scan	max scan	last scan	PK TY	peak height	corr. area	corr. % max.	% of total
1	1.593	69	83	84	rBV2	15334	47882	7.23%	1.340%
2	2.386	207	213	217	rBV3	3964	7544	1.14%	0.211%
3	2.947	296	305	310	rBV5	3000	7939	1.20%	0.222%
4	5.093	646	657	671	rBV2	20284	61514	9.29%	1.722%
5	5.379	694	704	721	rBV2	78646	237550	35.89%	6.649%
6	5.544	721	731	747	rVB2	120973	351469	53.10%	9.838%
7	5.952	788	798	810	rBV	89169	244699	36.97%	6.849%
8	6.757	921	930	945	rBV	200483	478529	72.29%	13.395%
9	8.647	1234	1240	1259	rBV	414050	661954	100.00%	18.529%
10	9.269	1337	1342	1349	rVB2	5599	10015	1.51%	0.280%
11	10.055	1465	1471	1483	rBV	398797	566416	85.57%	15.855%
12	11.079	1633	1639	1651	rBV	319749	415859	62.82%	11.641%
13	11.311	1672	1677	1683	rBV2	6055	7914	1.20%	0.222%
14	12.018	1788	1793	1806	rBV	367785	473227	71.49%	13.246%

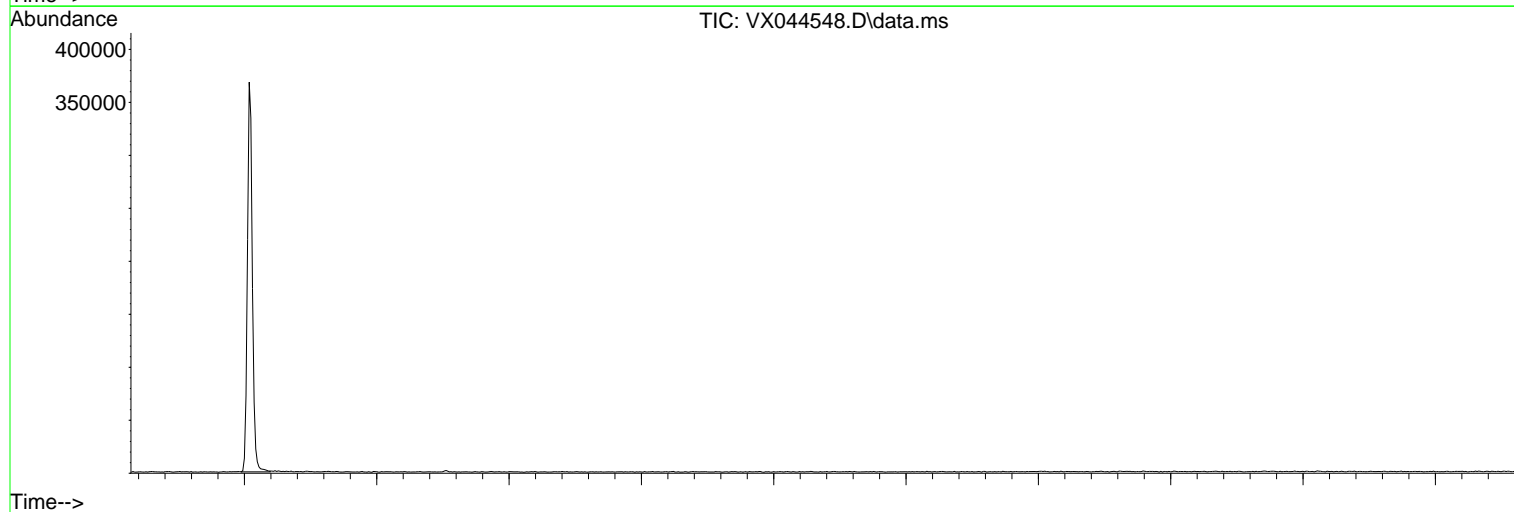
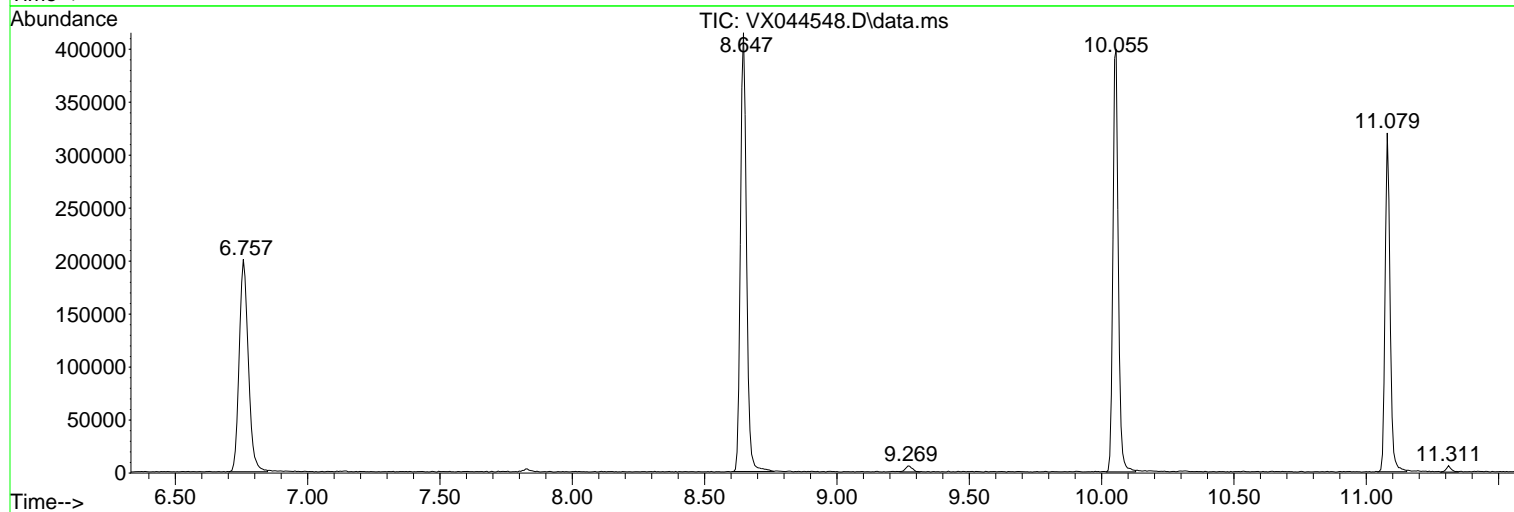
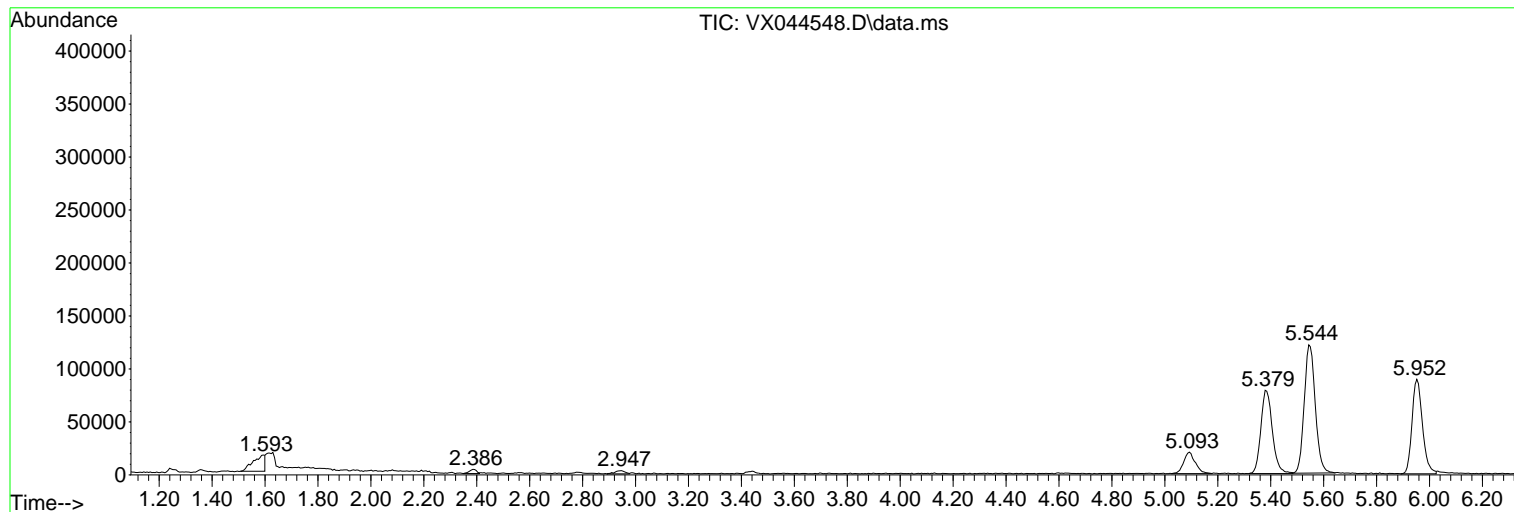
Sum of corrected areas: 3572511

Data Path : Z:\voasrv\HPCHEM1\MSVOA_X\Data\VX123124\
Data File : VX044548.D
Acq On : 30 Dec 2024 16:55
Operator : JC/MD
Sample : P5376-20
Misc : 5.0mL/MSVOA_X/WATER
ALS Vial : 10 Sample Multiplier: 1

Instrument :
MSVOA_X
ClientSampleId :
FB03-20241219

Quant Method : Z:\voasrv\HPCHEM1\MSVOA_X\Method\82X121124W.M
Quant Title : SW846 8260

TIC Library : C:\Database\NIST20.L
TIC Integration Parameters: LSCINT.P



Library Search Compound Report

Data Path : Z:\voasrv\HPCHEM1\MSVOA_X\Data\VX123124\
Data File : VX044548.D
Acq On : 30 Dec 2024 16:55
Operator : JC/MD
Sample : P5376-20
Misc : 5.0mL/MSVOA_X/WATER
ALS Vial : 10 Sample Multiplier: 1

Instrument :
MSVOA_X
ClientSampleId :
FB03-20241219

Quant Method : Z:\voasrv\HPCHEM1\MSVOA_X\Method\82X121124W.M
Quant Title : SW846 8260

TIC Library : C:\Database\NIST20.L
TIC Integration Parameters: LSCINT.P

No Library Search Compounds Detected

Data Path : Z:\voasrv\HPCHEM1\MSVOA_X\Data\VX123124\
Data File : VX044548.D
Acq On : 30 Dec 2024 16:55
Operator : JC/MD
Sample : P5376-20
Misc : 5.0mL/MSVOA_X/WATER
ALS Vial : 10 Sample Multiplier: 1

Instrument :
MSVOA_X
ClientSampleId :
FB03-20241219

Quant Method : Z:\voasrv\HPCHEM1\MSVOA_X\Method\82X121124W.M
Quant Title : SW846 8260

TIC Library : C:\Database\NIST20.L
TIC Integration Parameters: LSCINT.P

TIC Top Hit name	RT	EstConc	Units	Response	#	RT	Resp	Conc
------------------	----	---------	-------	----------	---	----	------	------
