

Data Path : Z:\voasrv\HPCHEM1\MSVOA\_X\Data\VX082622\  
 Data File : VX030861.D  
 Acq On : 27 Aug 2022 10:33  
 Operator : JC/MD  
 Sample : N4373-02  
 Misc : 5.0mL/MSVOA\_X/WATER  
 ALS Vial : 55 Sample Multiplier: 1

Instrument :  
 MSVOA\_X  
 ClientSampleId :  
 TT101D2-20220824

Quant Time: Aug 27 22:23:04 2022  
 Quant Method : Z:\voasrv\HPCHEM1\MSVOA\_X\Method\82X082522W.M  
 Quant Title : SW846 8260  
 QLast Update : Fri Aug 26 02:03:28 2022  
 Response via : Initial Calibration

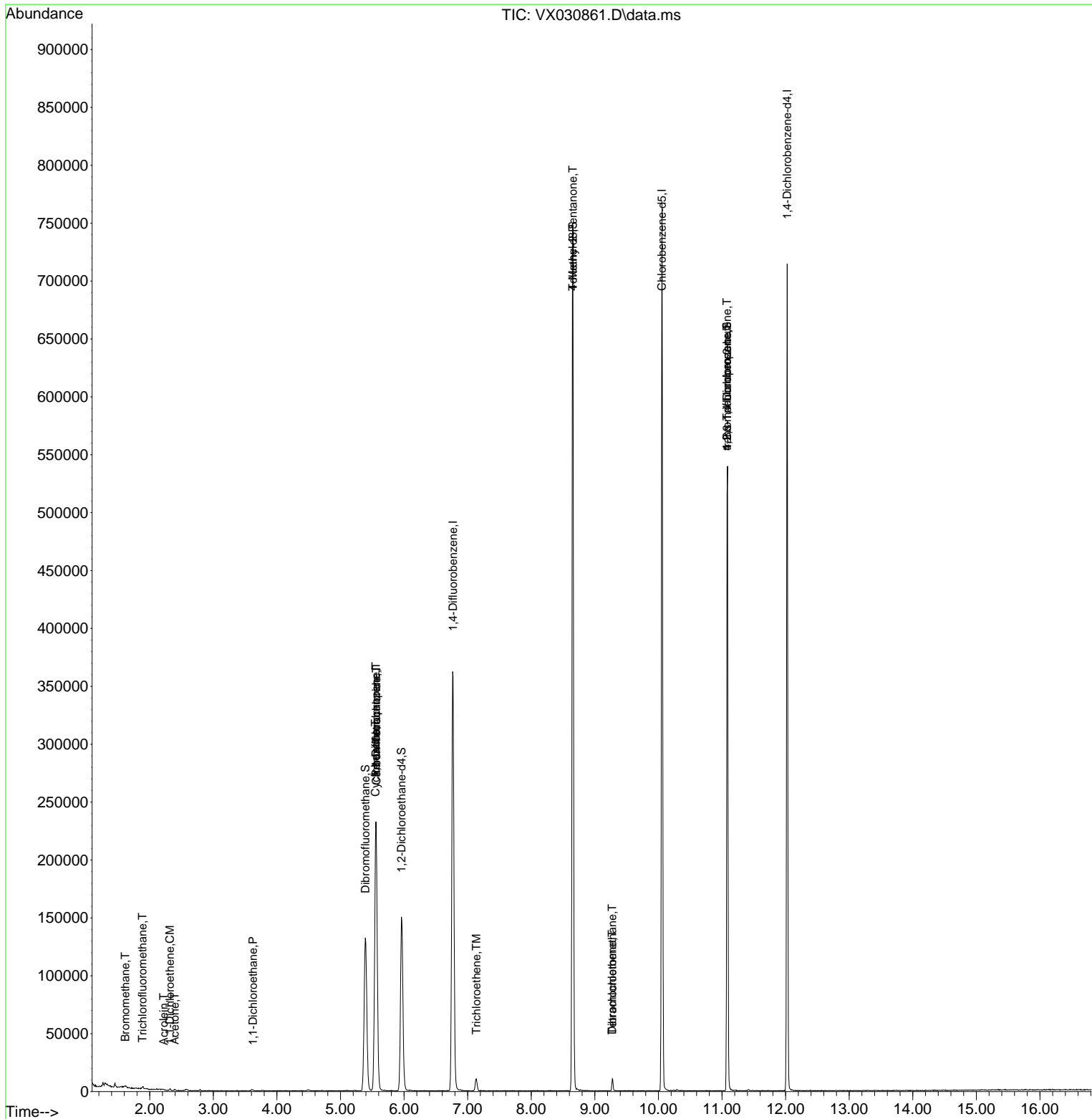
Compound	R.T.	QIon	Response	Conc	Units	Dev(Min)
-----						
Internal Standards						
1) Pentafluorobenzene	5.556	168	217018	50.000	ug/l	0.00
34) 1,4-Difluorobenzene	6.769	114	372575	50.000	ug/l	0.00
63) Chlorobenzene-d5	10.055	117	336809	50.000	ug/l	0.00
72) 1,4-Dichlorobenzene-d4	12.024	152	141384	50.000	ug/l	0.00
System Monitoring Compounds						
33) 1,2-Dichloroethane-d4	5.958	65	143910	56.375	ug/l	0.00
Spiked Amount	50.000	Range 74 - 125	Recovery	=	112.760%	
35) Dibromofluoromethane	5.391	113	119044	51.989	ug/l	0.00
Spiked Amount	50.000	Range 75 - 124	Recovery	=	103.980%	
50) Toluene-d8	8.653	98	447294	56.058	ug/l	0.00
Spiked Amount	50.000	Range 86 - 113	Recovery	=	112.120%	
62) 4-Bromofluorobenzene	11.079	95	145929	49.124	ug/l	0.00
Spiked Amount	50.000	Range 83 - 123	Recovery	=	98.240%	
Target Compounds						
						Qvalue
3) Chloromethane	1.288	50	296	Below Cal		89
5) Bromomethane	1.618	94	360	0.356	ug/l #	45
6) Chloroethane	1.715	64	202	Below Cal	#	41
7) Trichlorofluoromethane	1.886	101	955	0.287	ug/l #	73
12) 1,1-Dichloroethene	2.319	96	510	0.259	ug/l	97
13) Acrolein	2.221	56	20	10.091	ug/l #	14
16) Acetone	2.392	43	1190	1.009	ug/l	92
17) Carbon Disulfide	2.514	76	162	Below Cal	#	74
20) Methylene Chloride	2.794	84	555	Below Cal	#	79
24) 1,1-Dichloroethane	3.623	63	1405	0.339	ug/l #	82
31) Cyclohexane	5.550	56	4375	1.340	ug/l #	1
36) 1,1-Dichloropropene	5.556	75	17473	5.604	ug/l #	49
38) Carbon Tetrachloride	5.562	117	22730	6.911	ug/l #	19
44) Trichloroethene	7.135	130	4342	1.611	ug/l	92
51) 4-Methyl-2-Pentanone	8.653	43	1908	0.509	ug/l #	1
60) Dibromochloromethane	9.275	129	1783	0.661	ug/l #	11
64) Tetrachloroethene	9.275	164	1909	0.720	ug/l	86
76) 1,2,3-Trichloropropane	11.079	75	73235	23.643	ug/l #	38
81) trans-1,4-Dichloro-2-b...	11.079	75	73235	76.282	ug/l #	13

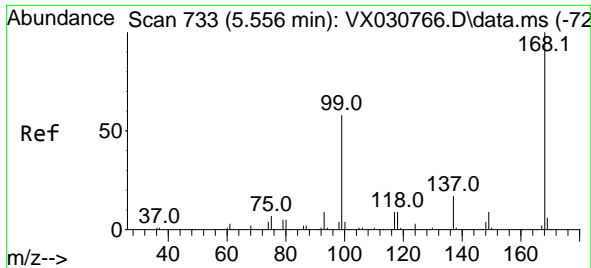
(#) = qualifier out of range (m) = manual integration (+) = signals summed

Data Path : Z:\voasrv\HPCHEM1\MSVOA\_X\Data\VX082622\  
 Data File : VX030861.D  
 Acq On : 27 Aug 2022 10:33  
 Operator : JC/MD  
 Sample : N4373-02  
 Misc : 5.0mL/MSVOA\_X/WATER  
 ALS Vial : 55 Sample Multiplier: 1

Instrument :  
 MSVOA\_X  
 ClientSampleId :  
 TT101D2-20220824

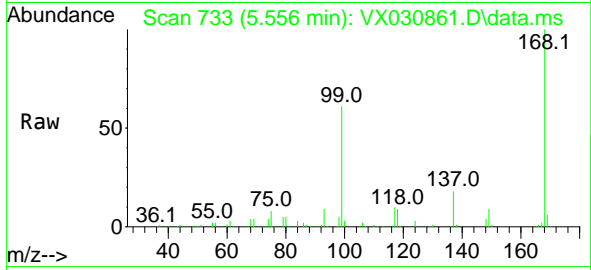
Quant Time: Aug 27 22:23:04 2022  
 Quant Method : Z:\voasrv\HPCHEM1\MSVOA\_X\Method\82X082522W.M  
 Quant Title : SW846 8260  
 QLast Update : Fri Aug 26 02:03:28 2022  
 Response via : Initial Calibration



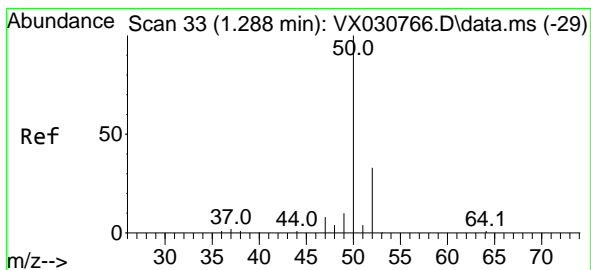
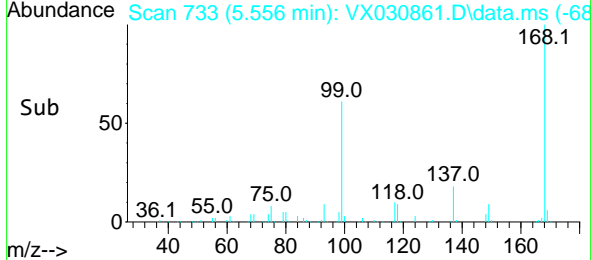
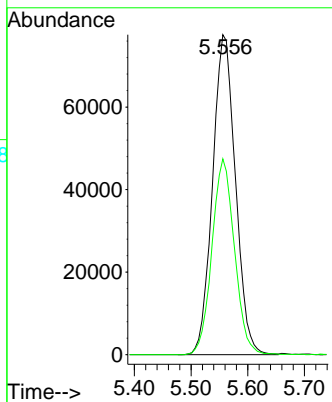


#1  
 Pentafluorobenzene  
 Concen: 50.000 ug/l  
 RT: 5.556 min Scan# 71  
 Delta R.T. 0.000 min  
 Lab File: VX030861.D  
 Acq: 27 Aug 2022 10:33

Instrument :  
 MSVOA\_X  
 ClientSampleId :  
 TT101D2-20220824

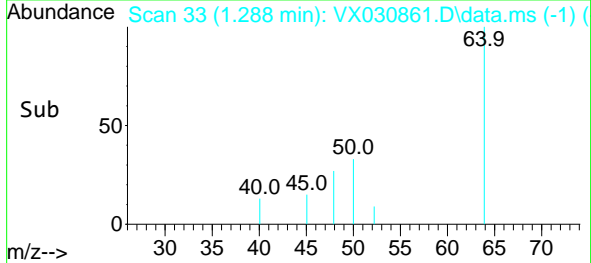
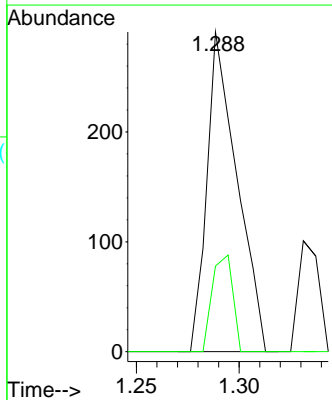
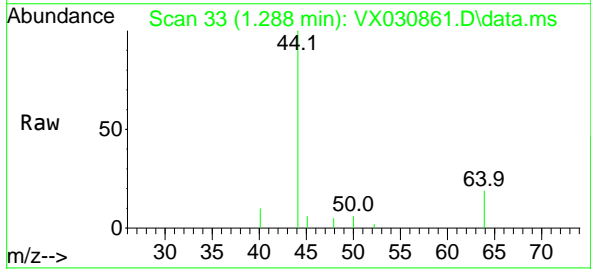


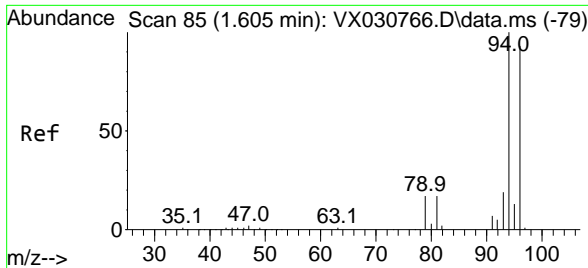
Tgt Ion:168 Resp: 217018  
 Ion Ratio Lower Upper  
 168 100  
 99 61.2 44.0 66.0



#3  
 Chloromethane  
 Concen: Below Cal  
 RT: 1.288 min Scan# 33  
 Delta R.T. 0.000 min  
 Lab File: VX030861.D  
 Acq: 27 Aug 2022 10:33

Tgt Ion: 50 Resp: 296  
 Ion Ratio Lower Upper  
 50 100  
 52 26.8 26.3 39.5

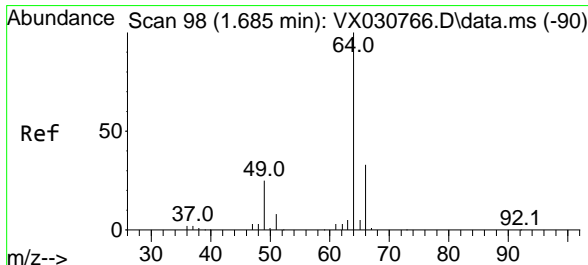
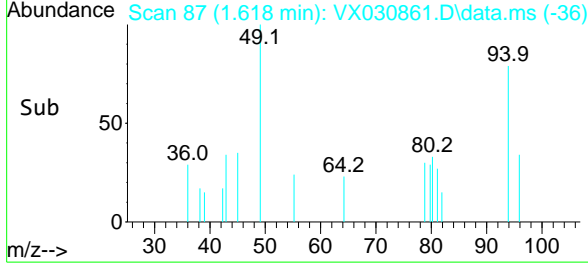
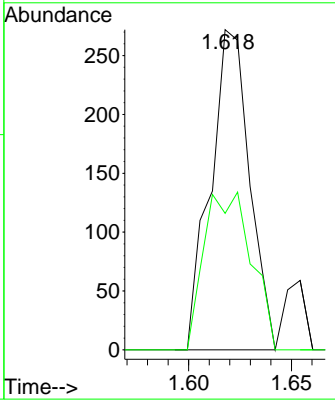
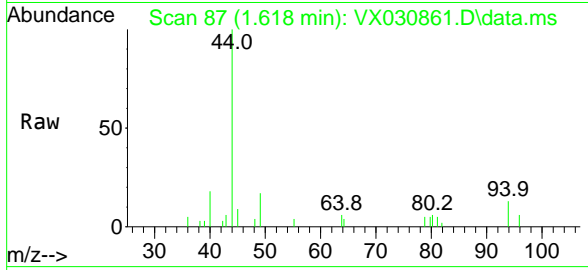




#5  
 Bromomethane  
 Concen: 0.356 ug/l  
 RT: 1.618 min Scan# 81  
 Delta R.T. 0.012 min  
 Lab File: VX030861.D  
 Acq: 27 Aug 2022 10:33

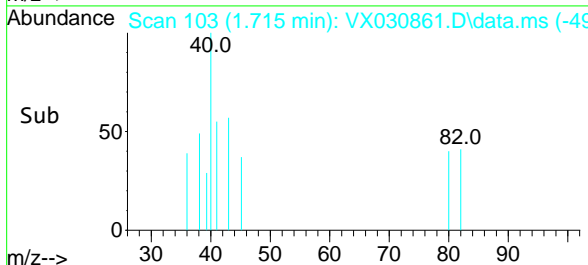
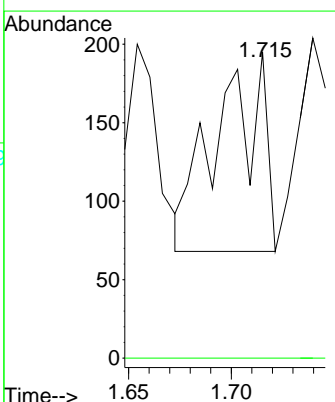
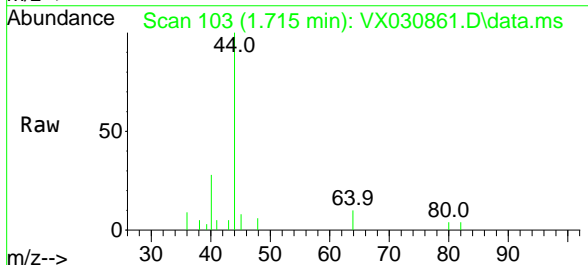
Instrument : MSVOA\_X  
 ClientSampleId : TT101D2-20220824

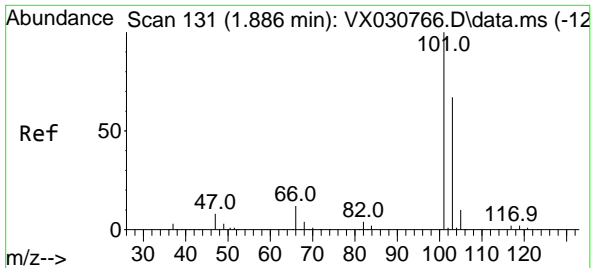
Tgt Ion: 94 Resp: 360  
 Ion Ratio Lower Upper  
 94 100  
 96 42.6 76.9 115.3#



#6  
 Chloroethane  
 Concen: Below Cal  
 RT: 1.715 min Scan# 103  
 Delta R.T. 0.030 min  
 Lab File: VX030861.D  
 Acq: 27 Aug 2022 10:33

Tgt Ion: 64 Resp: 202  
 Ion Ratio Lower Upper  
 64 100  
 66 0.0 27.2 40.8#

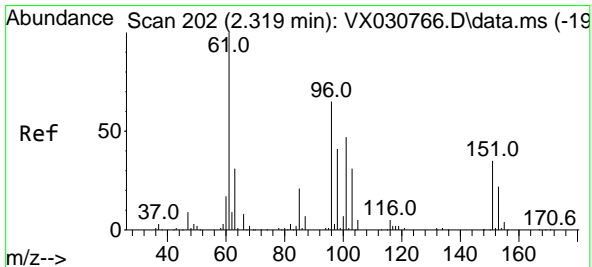
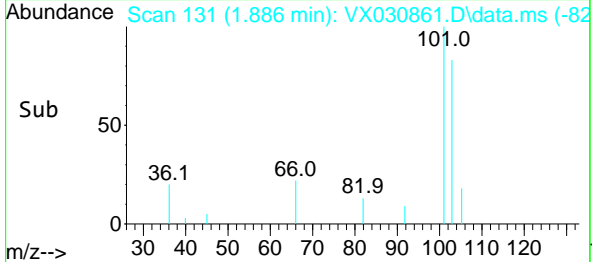
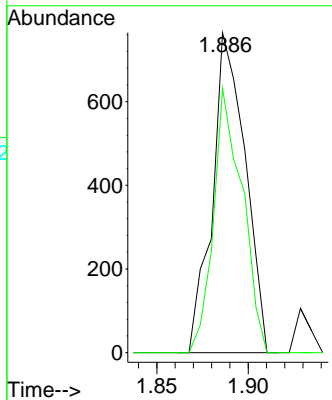
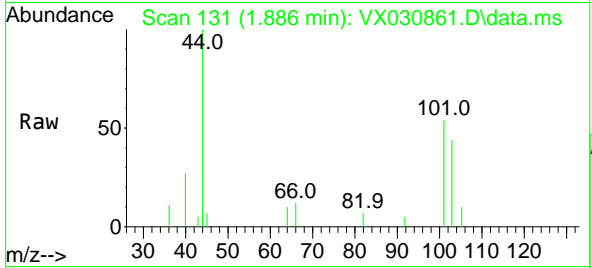




#7  
 Trichlorofluoromethane  
 Concen: 0.287 ug/l  
 RT: 1.886 min Scan# 11  
 Delta R.T. 0.000 min  
 Lab File: VX030861.D  
 Acq: 27 Aug 2022 10:33

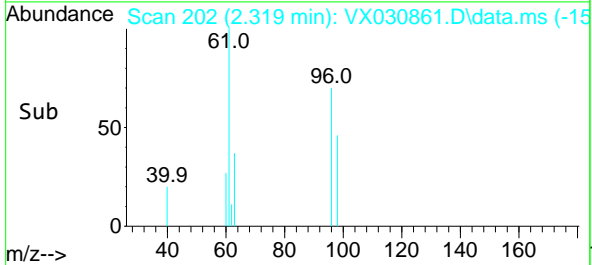
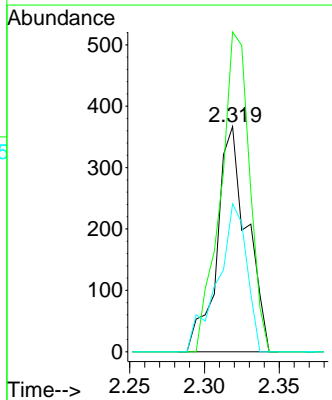
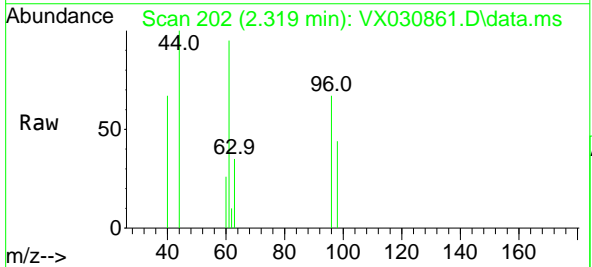
Instrument :  
 MSVOA\_X  
 ClientSampleId :  
 TT101D2-20220824

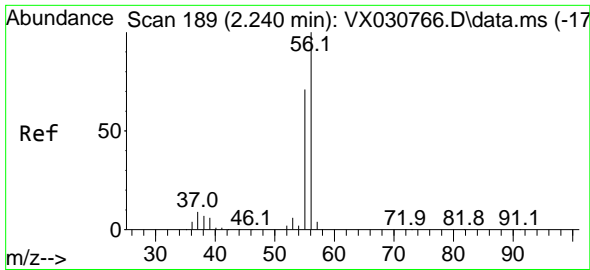
Tgt Ion:101 Resp: 955  
 Ion Ratio Lower Upper  
 101 100  
 103 82.6 49.7 74.5#



#12  
 1,1-Dichloroethene  
 Concen: 0.259 ug/l  
 RT: 2.319 min Scan# 202  
 Delta R.T. 0.000 min  
 Lab File: VX030861.D  
 Acq: 27 Aug 2022 10:33

Tgt Ion: 96 Resp: 510  
 Ion Ratio Lower Upper  
 96 100  
 61 142.0 117.4 176.0  
 98 65.7 52.2 78.4

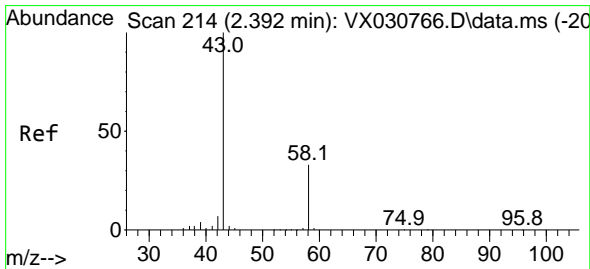
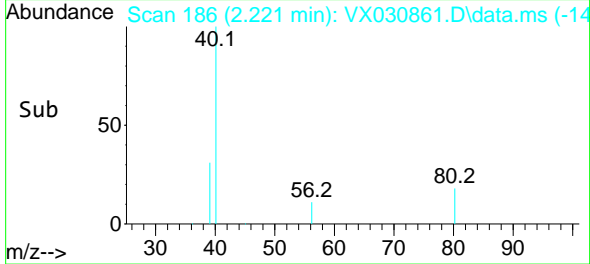
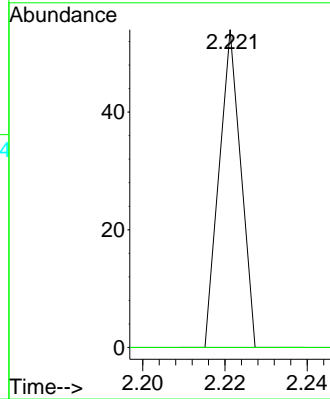
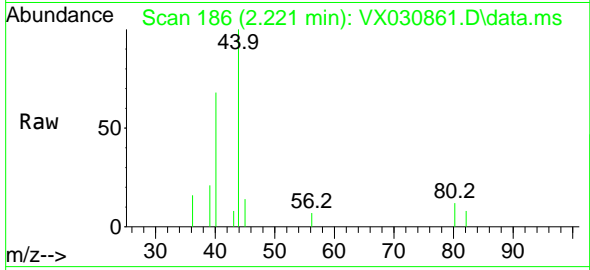




#13  
 Acrolein  
 Concen: 10.091 ug/l  
 RT: 2.221 min Scan# 11  
 Delta R.T. -0.019 min  
 Lab File: VX030861.D  
 Acq: 27 Aug 2022 10:33

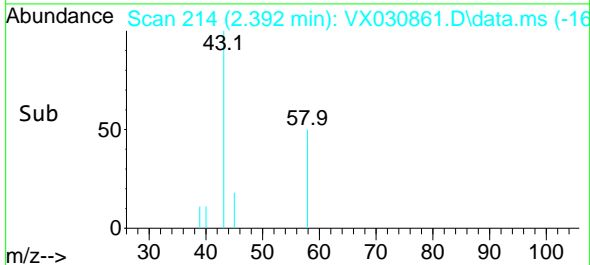
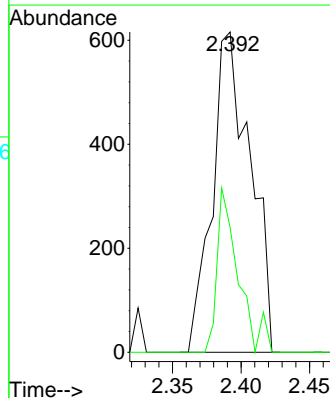
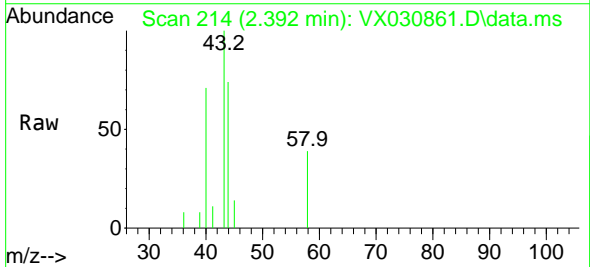
Instrument : MSVOA\_X  
 ClientSampleId : TT101D2-20220824

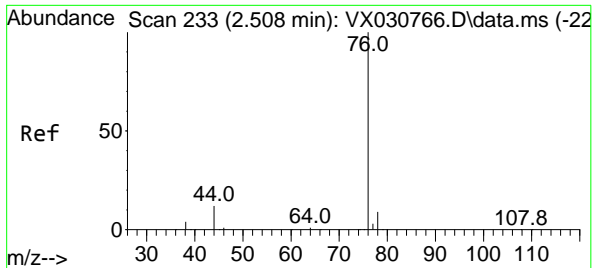
Tgt Ion: 56 Resp: 20  
 Ion Ratio Lower Upper  
 56 100  
 55 0.0 56.6 84.8#



#16  
 Acetone  
 Concen: 1.009 ug/l  
 RT: 2.392 min Scan# 214  
 Delta R.T. 0.000 min  
 Lab File: VX030861.D  
 Acq: 27 Aug 2022 10:33

Tgt Ion: 43 Resp: 1190  
 Ion Ratio Lower Upper  
 43 100  
 58 39.0 27.7 41.5

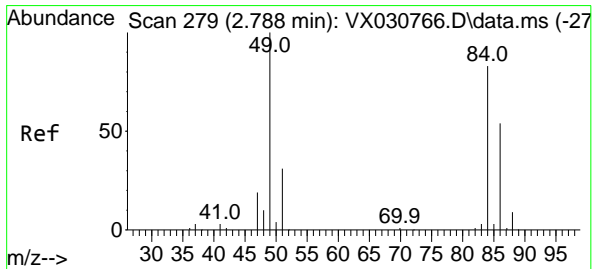
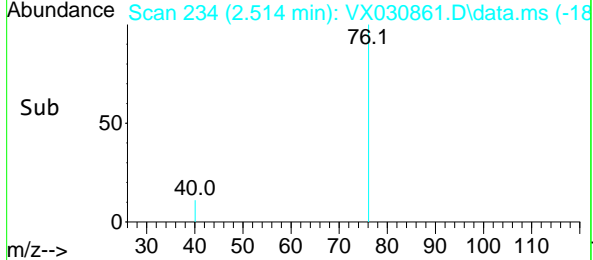
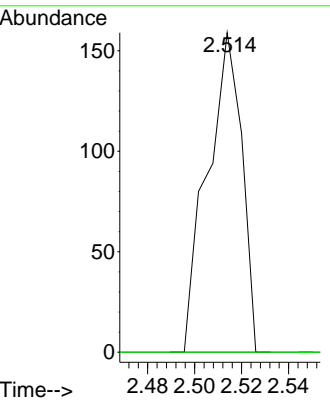
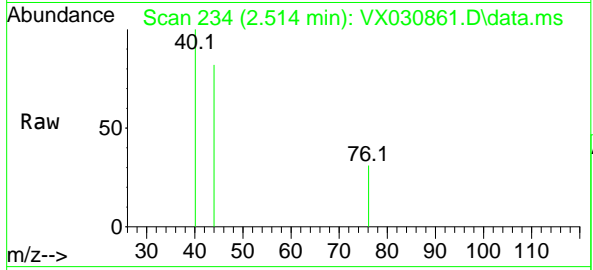




#17  
 Carbon Disulfide  
 Concen: Below Cal  
 RT: 2.514 min Scan# 21  
 Delta R.T. 0.006 min  
 Lab File: VX030861.D  
 Acq: 27 Aug 2022 10:33

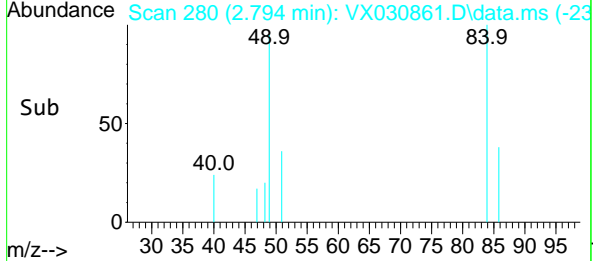
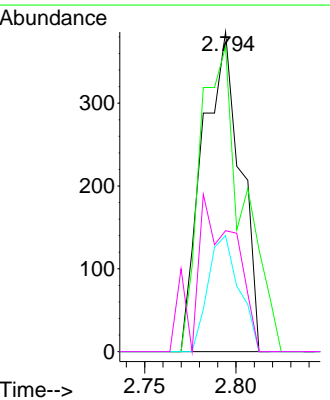
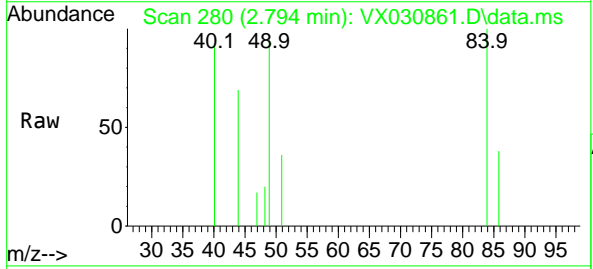
Instrument : MSVOA\_X  
 ClientSampleId : TT101D2-20220824

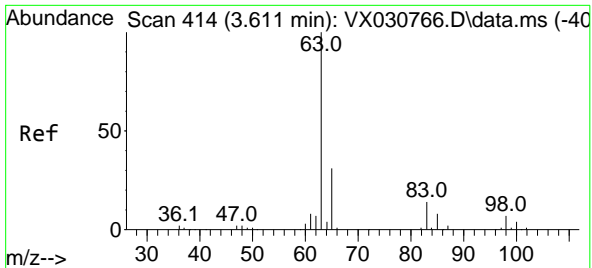
Tgt Ion: 76 Resp: 162  
 Ion Ratio Lower Upper  
 76 100  
 78 0.0 7.8 11.6#



#20  
 Methylene Chloride  
 Concen: Below Cal  
 RT: 2.794 min Scan# 280  
 Delta R.T. 0.006 min  
 Lab File: VX030861.D  
 Acq: 27 Aug 2022 10:33

Tgt Ion: 84 Resp: 555  
 Ion Ratio Lower Upper  
 84 100  
 49 95.3 93.8 140.6  
 51 36.3 29.4 44.0  
 86 37.8 51.0 76.4#

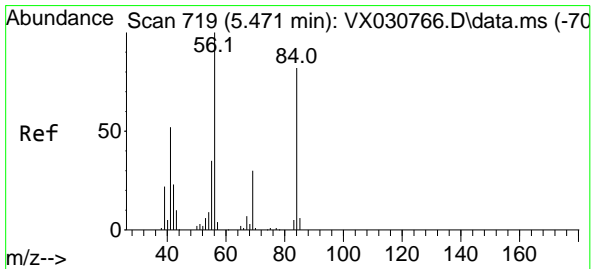
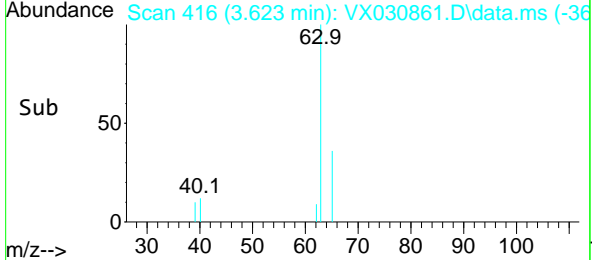
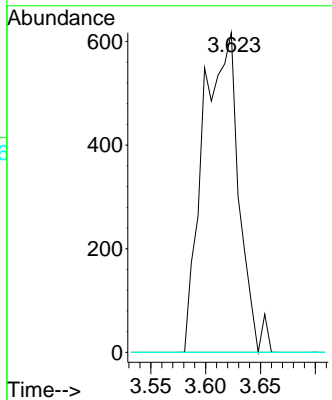
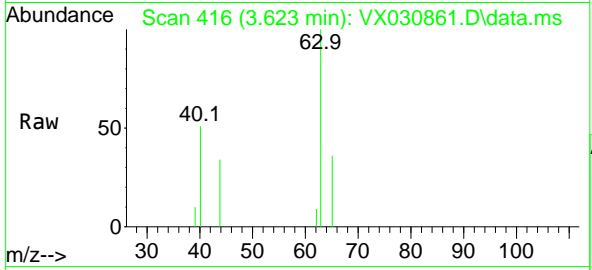




#24  
 1,1-Dichloroethane  
 Concen: 0.339 ug/l  
 RT: 3.623 min Scan# 416  
 Delta R.T. 0.012 min  
 Lab File: VX030861.D  
 Acq: 27 Aug 2022 10:33

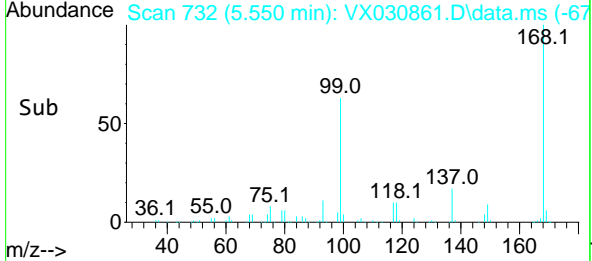
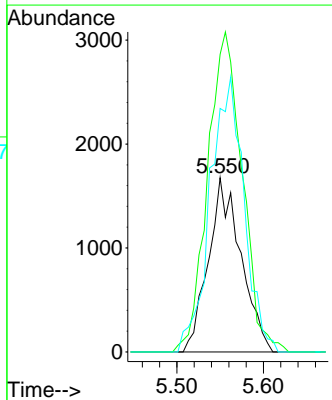
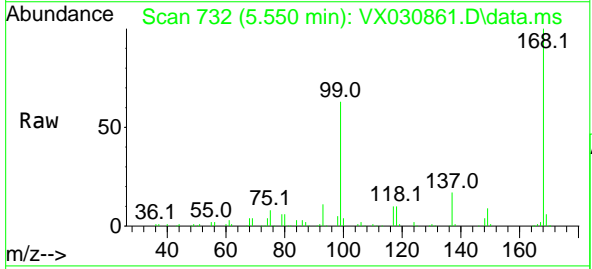
Instrument : MSVOA\_X  
 ClientSampleId : TT101D2-20220824

Tgt Ion	Resp	Lower	Upper
63	1405		
98	0.0	3.5	10.5#
100	0.0	2.3	6.9#

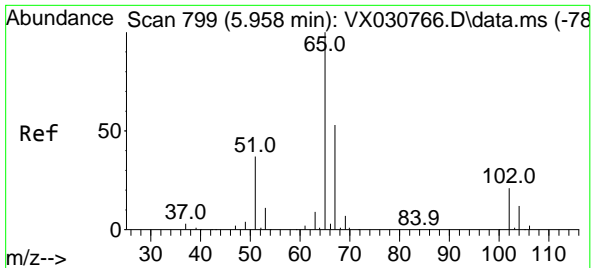


#31  
 Cyclohexane  
 Concen: 1.340 ug/l  
 RT: 5.550 min Scan# 732  
 Delta R.T. 0.079 min  
 Lab File: VX030861.D  
 Acq: 27 Aug 2022 10:33

Tgt Ion	Resp	Lower	Upper
56	4375		
69	167.0	25.4	38.0#
84	139.8	68.9	103.3#

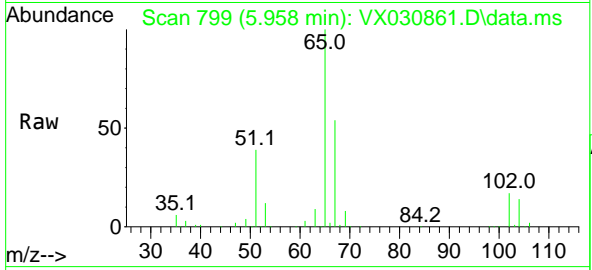




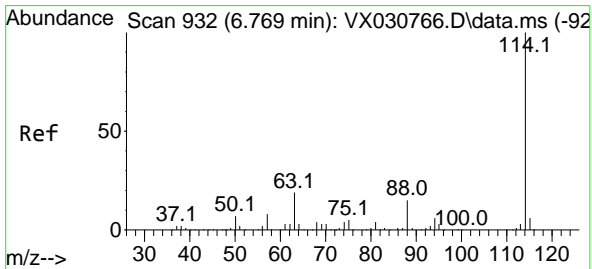
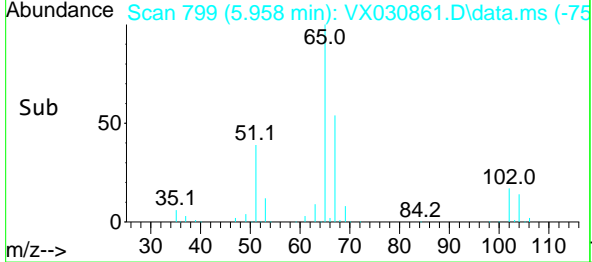
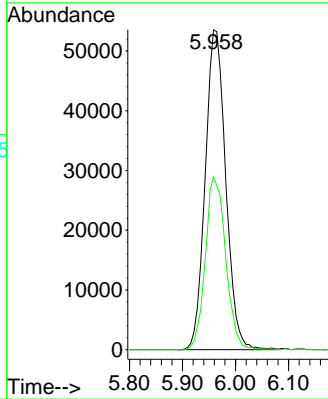


#33  
 1,2-Dichloroethane-d4  
 Concen: 56.375 ug/l  
 RT: 5.958 min Scan# 799  
 Delta R.T. 0.000 min  
 Lab File: VX030861.D  
 Acq: 27 Aug 2022 10:33

Instrument : MSVOA\_X  
 ClientSampleId : TT101D2-20220824

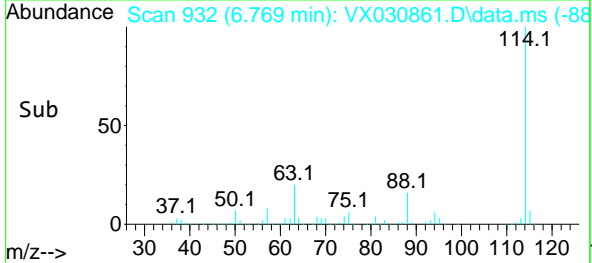
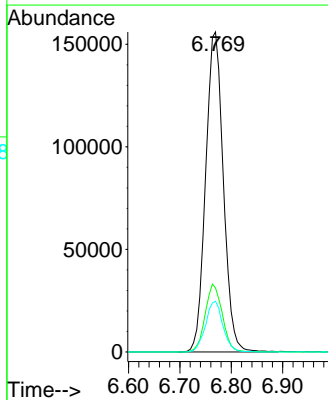
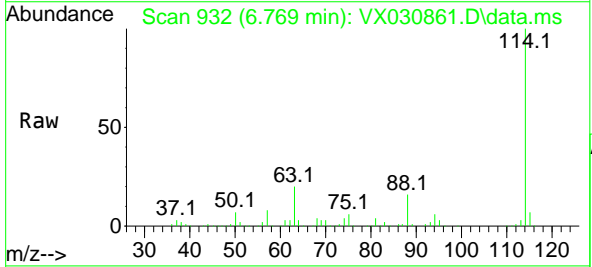


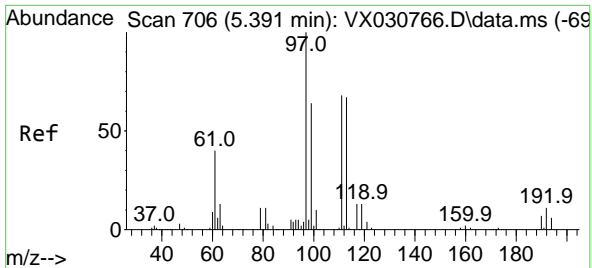
Tgt Ion: 65 Resp: 143910  
 Ion Ratio Lower Upper  
 65 100  
 67 53.4 0.0 109.6



#34  
 1,4-Difluorobenzene  
 Concen: 50.000 ug/l  
 RT: 6.769 min Scan# 932  
 Delta R.T. 0.000 min  
 Lab File: VX030861.D  
 Acq: 27 Aug 2022 10:33

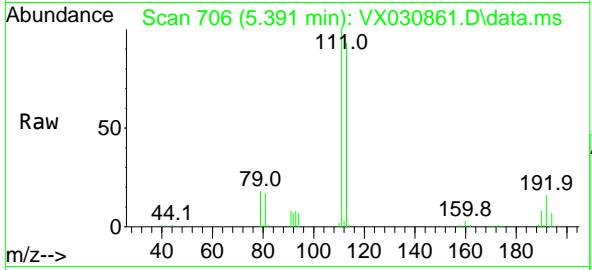
Tgt Ion: 114 Resp: 372575  
 Ion Ratio Lower Upper  
 114 100  
 63 20.0 0.0 38.4  
 88 15.8 0.0 31.8





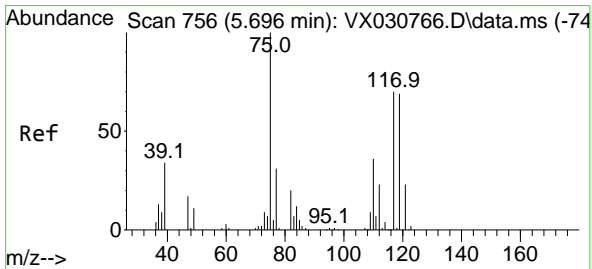
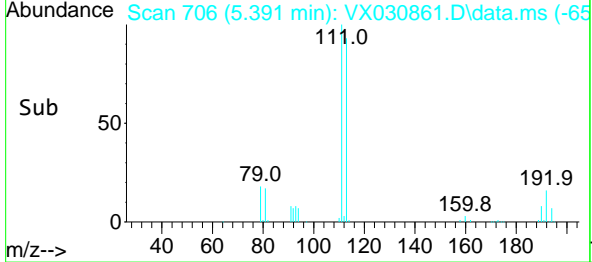
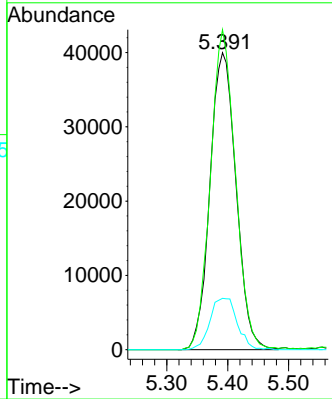
#35  
 Dibromofluoromethane  
 Concen: 51.989 ug/l  
 RT: 5.391 min Scan# 706  
 Delta R.T. 0.000 min  
 Lab File: VX030861.D  
 Acq: 27 Aug 2022 10:33

Instrument : MSVOA\_X  
 ClientSampleId : TT101D2-20220824



Tgt Ion:113 Resp: 119044

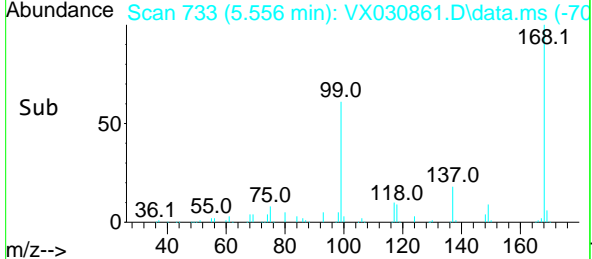
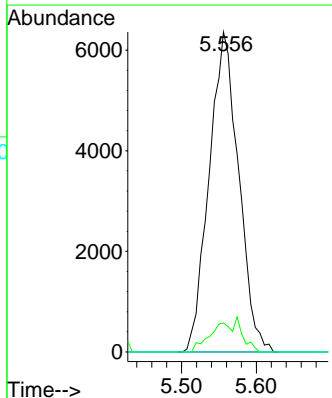
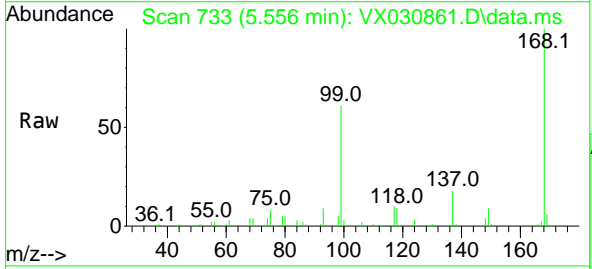
Ion	Ratio	Lower	Upper
113	100		
111	103.4	83.2	124.8
192	18.1	14.8	22.2

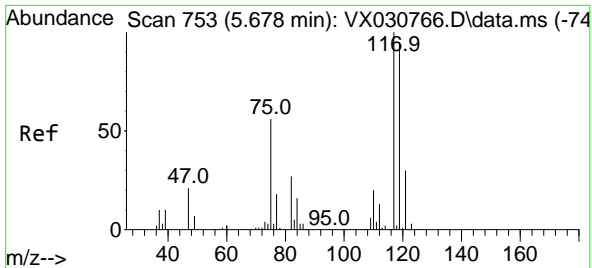


#36  
 1,1-Dichloropropene  
 Concen: 5.604 ug/l  
 RT: 5.556 min Scan# 733  
 Delta R.T. -0.140 min  
 Lab File: VX030861.D  
 Acq: 27 Aug 2022 10:33

Tgt Ion: 75 Resp: 17473

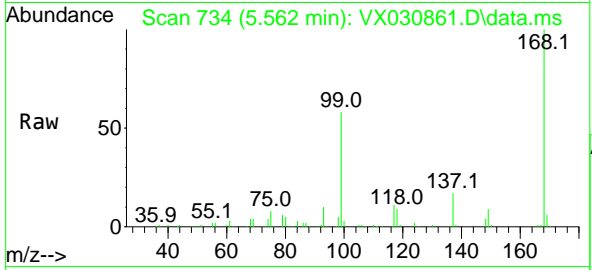
Ion	Ratio	Lower	Upper
75	100		
110	10.2	19.3	57.9#
77	0.0	24.4	36.6#



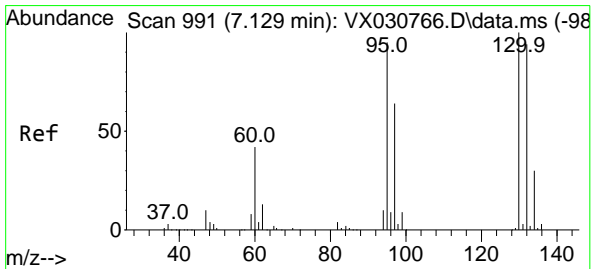
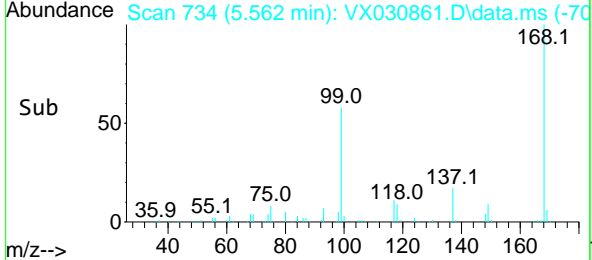
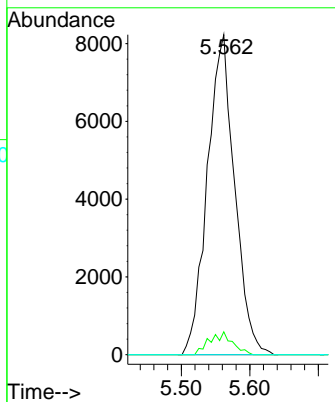


#38  
 Carbon Tetrachloride  
 Concen: 6.911 ug/l  
 RT: 5.562 min Scan# 711  
 Delta R.T. -0.116 min  
 Lab File: VX030861.D  
 Acq: 27 Aug 2022 10:33

Instrument : MSVOA\_X  
 ClientSampleId : TT101D2-20220824

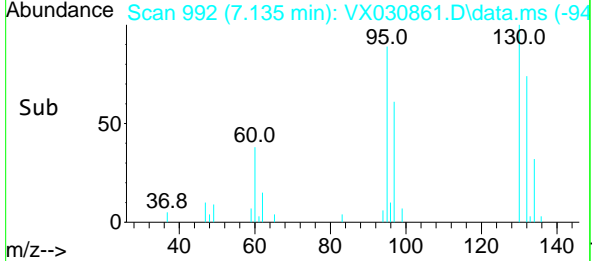
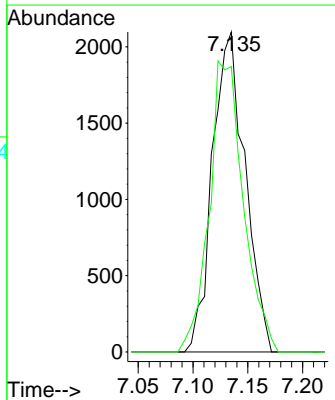
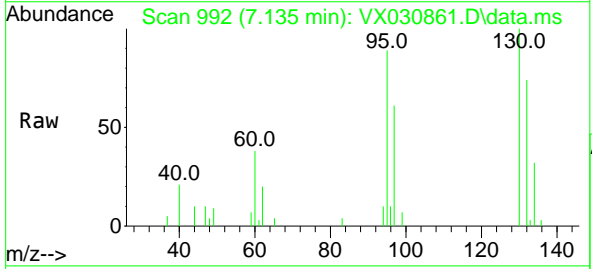


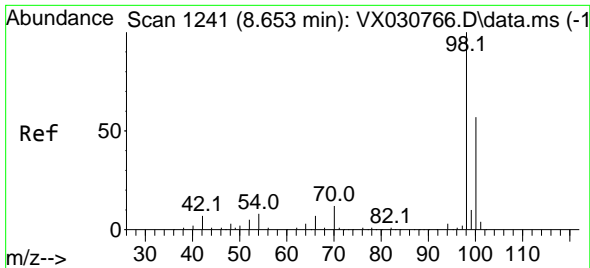
Tgt Ion:117 Resp: 22730  
 Ion Ratio Lower Upper  
 117 100  
 119 7.1 74.1 111.1#  
 121 0.0 25.8 38.8#



#44  
 Trichloroethene  
 Concen: 1.611 ug/l  
 RT: 7.135 min Scan# 992  
 Delta R.T. 0.006 min  
 Lab File: VX030861.D  
 Acq: 27 Aug 2022 10:33

Tgt Ion:130 Resp: 4342  
 Ion Ratio Lower Upper  
 130 100  
 95 89.2 0.0 194.8

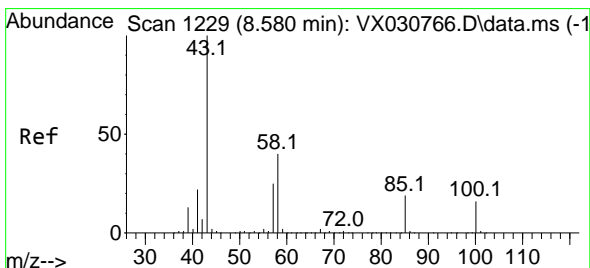
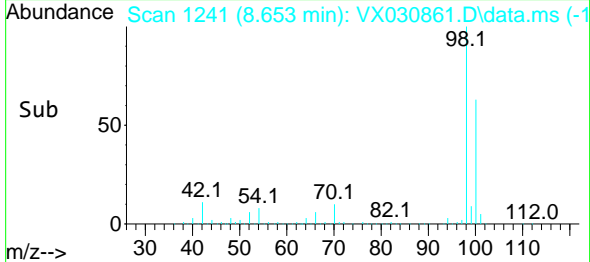
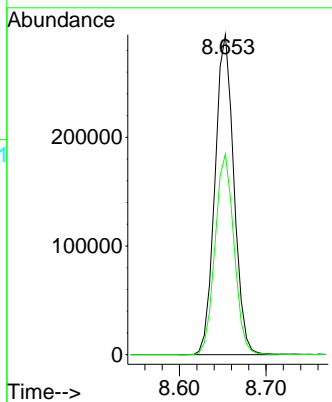
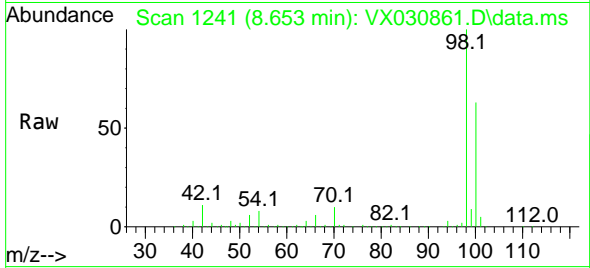




#50  
 Toluene-d8  
 Concen: 56.058 ug/l  
 RT: 8.653 min Scan# 1241  
 Delta R.T. 0.000 min  
 Lab File: VX030861.D  
 Acq: 27 Aug 2022 10:33

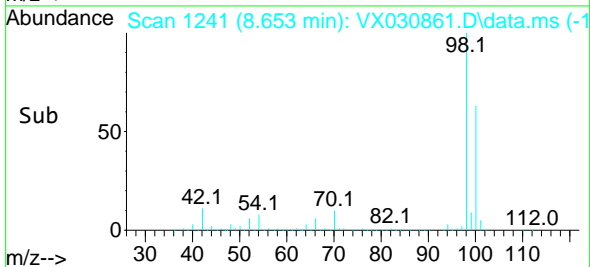
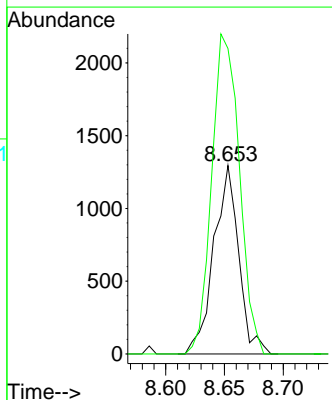
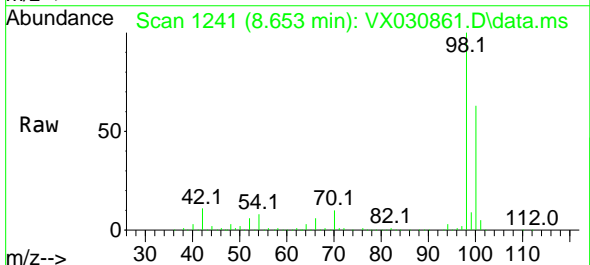
Instrument : MSVOA\_X  
 ClientSampleId : TT101D2-20220824

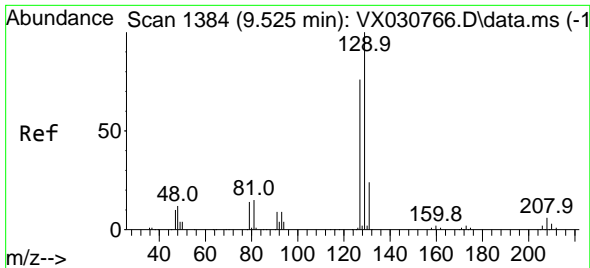
Tgt Ion: 98 Resp: 447294  
 Ion Ratio Lower Upper  
 98 100  
 100 62.9 52.3 78.5



#51  
 4-Methyl-2-Pentanone  
 Concen: 0.509 ug/l  
 RT: 8.653 min Scan# 1241  
 Delta R.T. 0.073 min  
 Lab File: VX030861.D  
 Acq: 27 Aug 2022 10:33

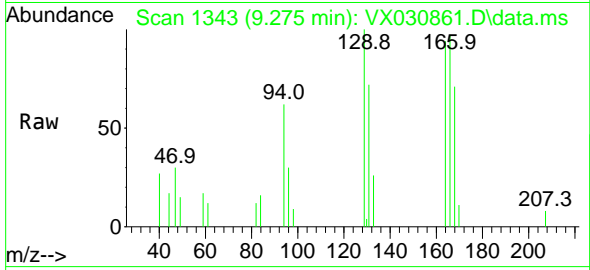
Tgt Ion: 43 Resp: 1908  
 Ion Ratio Lower Upper  
 43 100  
 58 188.9 31.4 47.2#



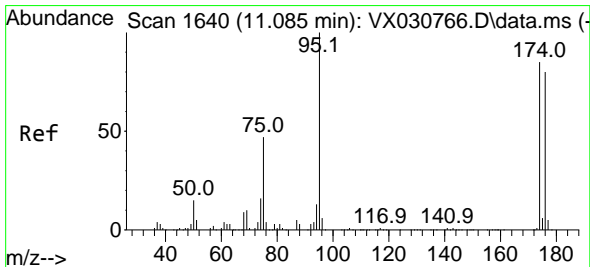
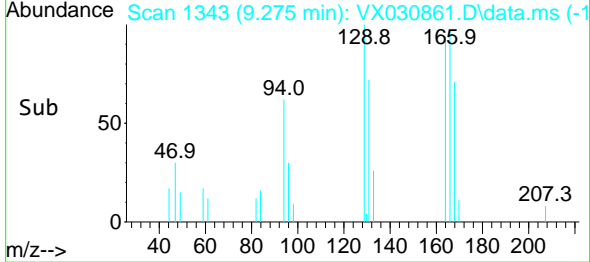
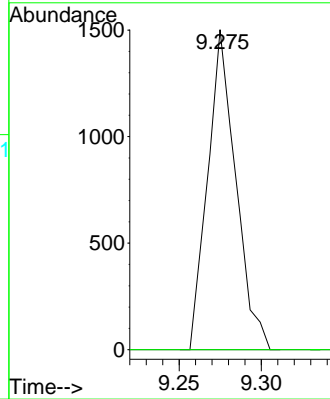


#60  
 Dibromochloromethane  
 Concen: 0.661 ug/l  
 RT: 9.275 min Scan# 1111  
 Delta R.T. -0.250 min  
 Lab File: VX030861.D  
 Acq: 27 Aug 2022 10:33

Instrument : MSVOA\_X  
 ClientSampleId : TT101D2-20220824

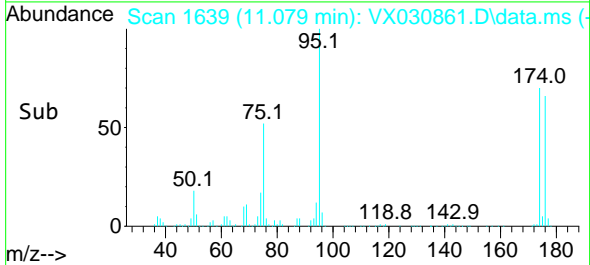
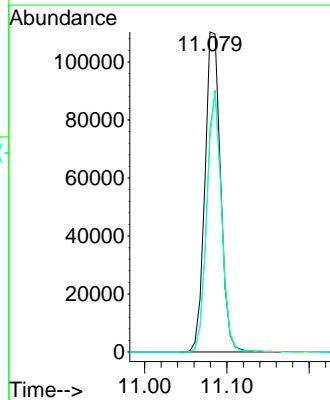
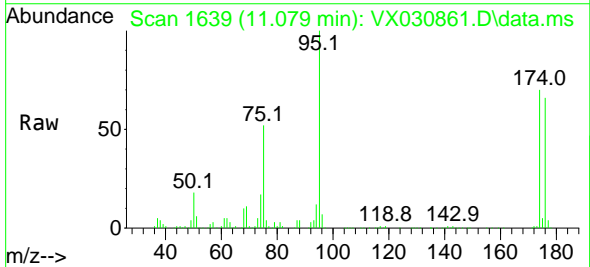


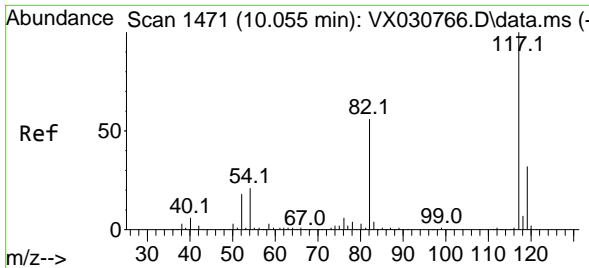
Tgt Ion: 129 Resp: 1783  
 Ion Ratio Lower Upper  
 129 100  
 127 0.0 38.5 115.5#



#62  
 4-Bromofluorobenzene  
 Concen: 49.124 ug/l  
 RT: 11.079 min Scan# 1639  
 Delta R.T. -0.006 min  
 Lab File: VX030861.D  
 Acq: 27 Aug 2022 10:33

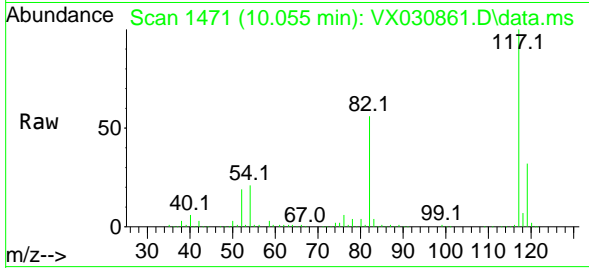
Tgt Ion: 95 Resp: 145929  
 Ion Ratio Lower Upper  
 95 100  
 174 77.8 0.0 149.0  
 176 75.1 0.0 146.0





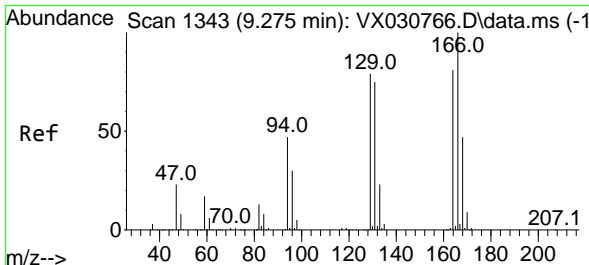
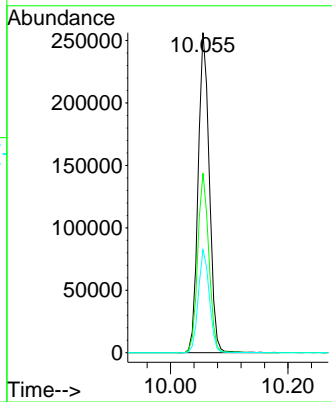
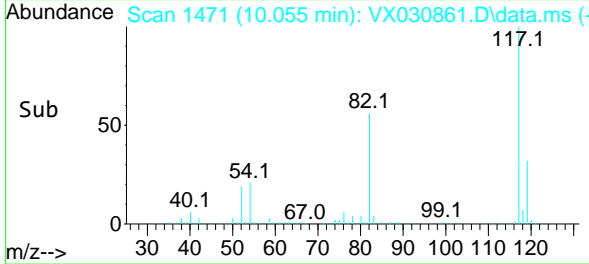
#63  
 Chlorobenzene-d5  
 Concen: 50.000 ug/l  
 RT: 10.055 min Scan# 14  
 Delta R.T. 0.000 min  
 Lab File: VX030861.D  
 Acq: 27 Aug 2022 10:33

Instrument :  
 MSVOA\_X  
 ClientSampleId :  
 TT101D2-20220824

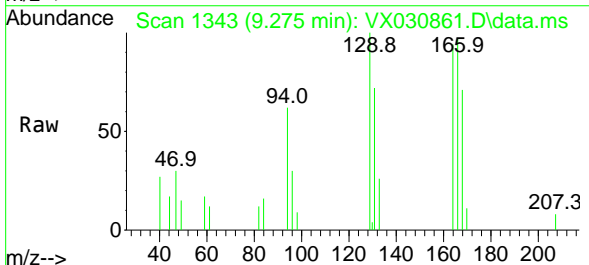


Tgt Ion:117 Resp: 336809

Ion	Ratio	Lower	Upper
117	100		
82	56.1	42.7	64.1
119	32.2	25.4	38.2

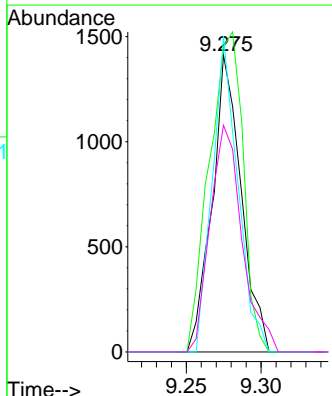
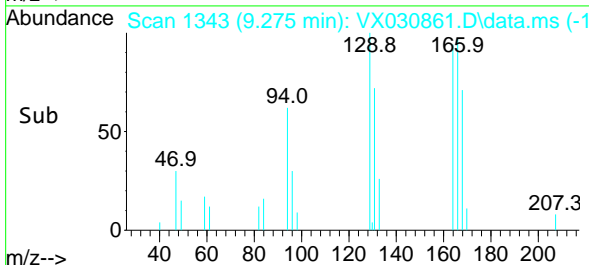


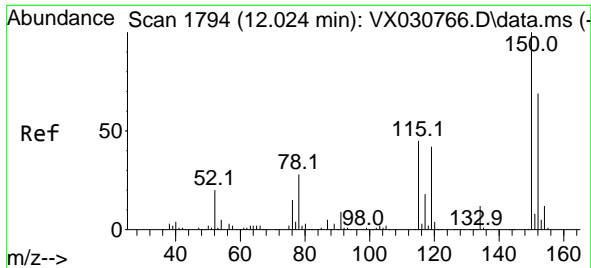
#64  
 Tetrachloroethene  
 Concen: 0.720 ug/l  
 RT: 9.275 min Scan# 1343  
 Delta R.T. -0.000 min  
 Lab File: VX030861.D  
 Acq: 27 Aug 2022 10:33



Tgt Ion:164 Resp: 1909

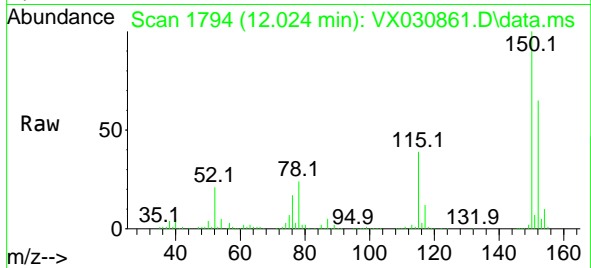
Ion	Ratio	Lower	Upper
164	100		
166	102.8	98.2	147.4
129	106.4	80.8	121.2
131	76.3	75.5	113.3



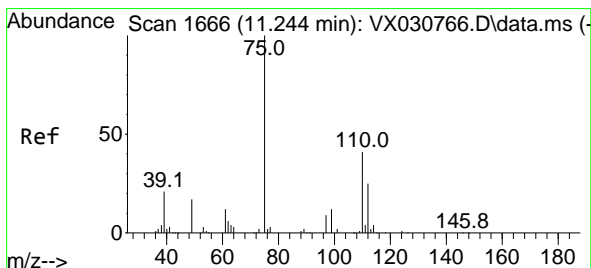
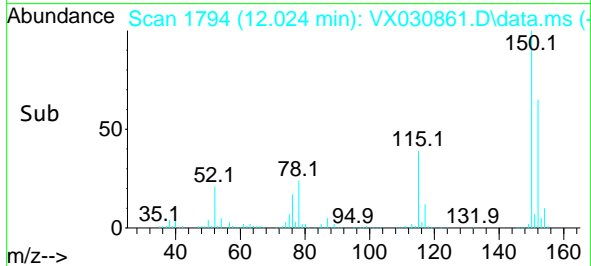
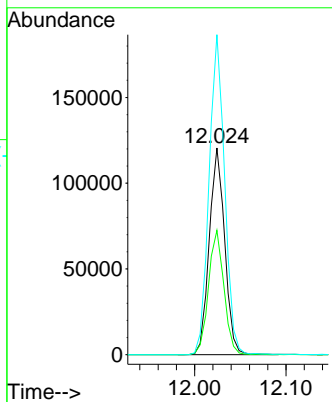


#72  
 1,4-Dichlorobenzene-d4  
 Concen: 50.000 ug/l  
 RT: 12.024 min Scan# 11  
 Delta R.T. 0.000 min  
 Lab File: VX030861.D  
 Acq: 27 Aug 2022 10:33

Instrument : MSVOA\_X  
 ClientSampleId : TT101D2-20220824

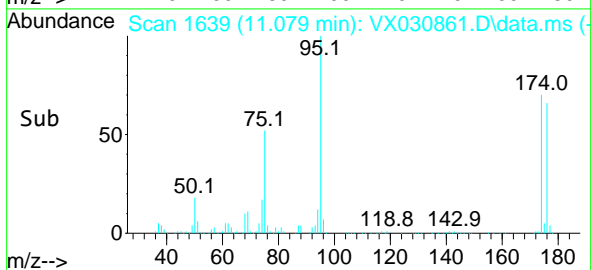
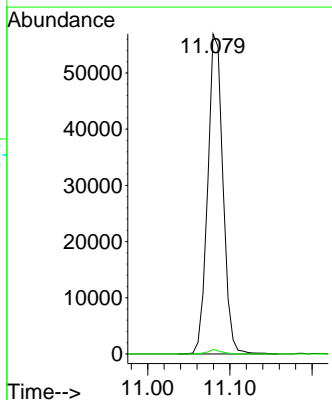
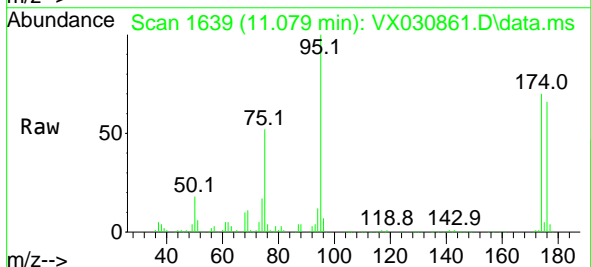


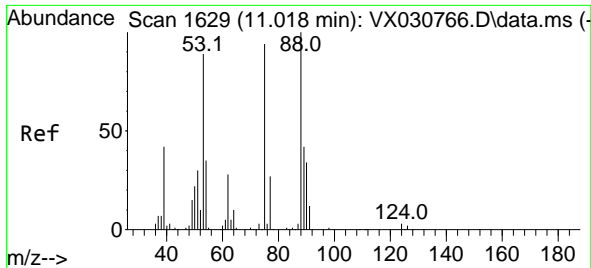
Tgt Ion:152 Resp: 141384  
 Ion Ratio Lower Upper  
 152 100  
 115 60.0 40.5 121.5  
 150 156.1 0.0 347.0



#76  
 1,2,3-Trichloropropane  
 Concen: 23.643 ug/l  
 RT: 11.079 min Scan# 1639  
 Delta R.T. -0.165 min  
 Lab File: VX030861.D  
 Acq: 27 Aug 2022 10:33

Tgt Ion: 75 Resp: 73235  
 Ion Ratio Lower Upper  
 75 100  
 77 1.2 19.8 59.3#





#81  
 trans-1,4-Dichloro-2-butene  
 Concen: 76.282 ug/l  
 RT: 11.079 min Scan# 1  
 Delta R.T. 0.061 min  
 Lab File: VX030861.D  
 Acq: 27 Aug 2022 10:33

Instrument :  
 MSVOA\_X  
 ClientSampleId :  
 TT101D2-20220824

Tgt Ion: 75 Resp: 73235

Ion	Ratio	Lower	Upper
75	100		
53	0.2	74.2	111.4#
89	0.0	34.8	52.2#

