

Data Path : Z:\voasrv\HPCHEM1\MSVOA\_X\Data\VX082622\  
 Data File : VX030817.D  
 Acq On : 26 Aug 2022 12:18  
 Operator : JC/MD  
 Sample : N4246-01  
 Misc : 5.0mL/MSVOA\_X/WATER  
 ALS Vial : 7 Sample Multiplier: 1

Instrument :  
 MSVOA\_X  
 ClientSampleId :  
 220817015-02-VOA

Quant Time: Aug 27 02:38:24 2022  
 Quant Method : Z:\voasrv\HPCHEM1\MSVOA\_X\Method\82X082522W.M  
 Quant Title : SW846 8260  
 QLast Update : Fri Aug 26 02:03:28 2022  
 Response via : Initial Calibration

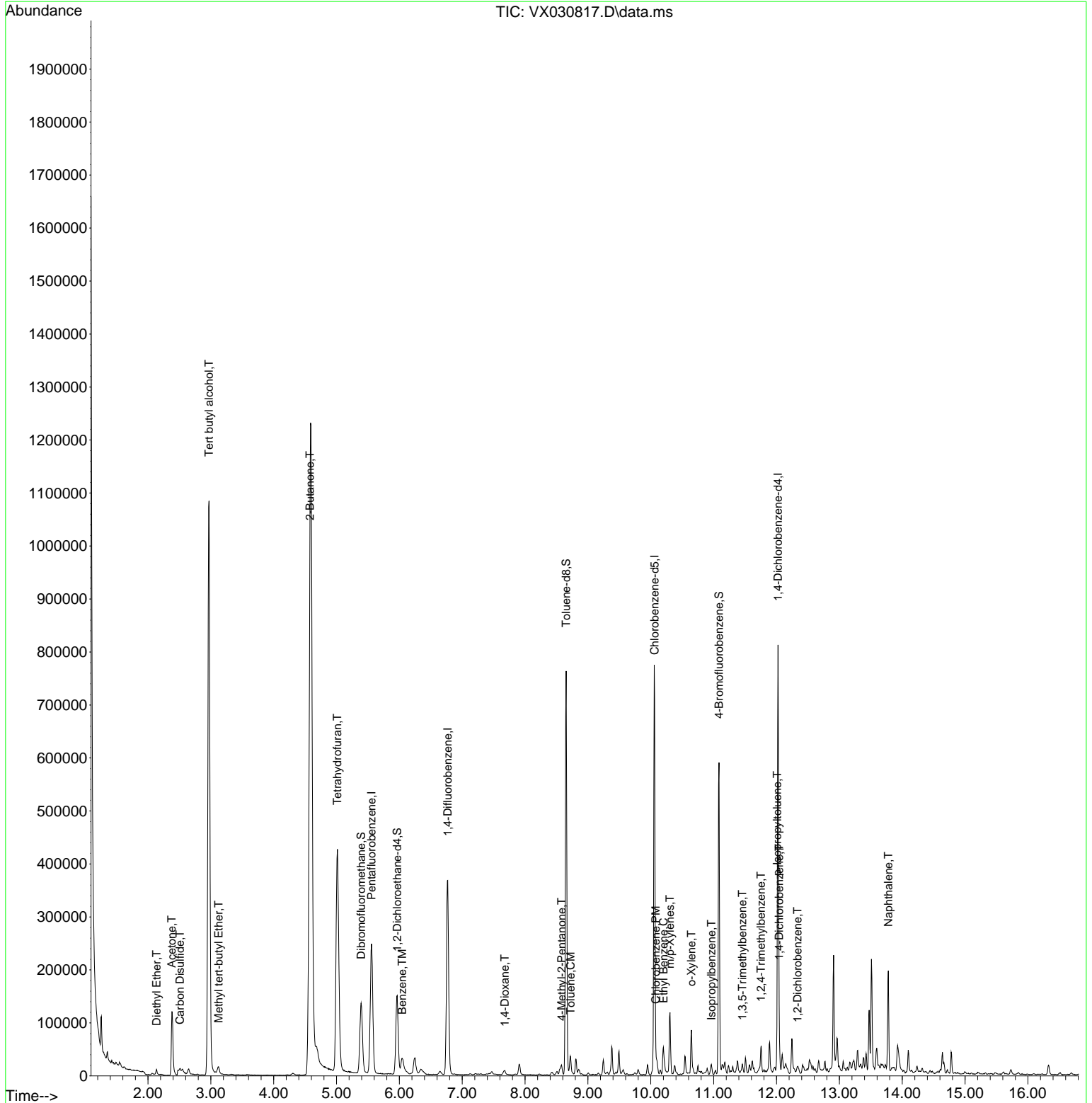
Compound	R.T.	QIon	Response	Conc	Units	Dev(Min)
-----						
Internal Standards						
1) Pentafluorobenzene	5.556	168	234188	50.000	ug/l	0.00
34) 1,4-Difluorobenzene	6.769	114	390914	50.000	ug/l	0.00
63) Chlorobenzene-d5	10.061	117	357258	50.000	ug/l	0.00
72) 1,4-Dichlorobenzene-d4	12.024	152	163502	50.000	ug/l	0.00
System Monitoring Compounds						
33) 1,2-Dichloroethane-d4	5.964	65	141696	51.438	ug/l	0.00
Spiked Amount	50.000	Range	74 - 125	Recovery	=	102.880%
35) Dibromofluoromethane	5.391	113	118801	49.449	ug/l	0.00
Spiked Amount	50.000	Range	75 - 124	Recovery	=	98.900%
50) Toluene-d8	8.653	98	458164	54.726	ug/l	0.00
Spiked Amount	50.000	Range	86 - 113	Recovery	=	109.460%
62) 4-Bromofluorobenzene	11.085	95	164174	52.673	ug/l	0.00
Spiked Amount	50.000	Range	83 - 123	Recovery	=	105.340%
Target Compounds						
						Qvalue
8) Diethyl Ether	2.136	74	3035	2.238	ug/l	97
11) Tert butyl alcohol	2.971	59	1296561	2168.205	ug/l	97
16) Acetone	2.380	43	116842	91.787	ug/l	95
17) Carbon Disulfide	2.508	76	5921	0.732	ug/l	95
19) Methyl tert-butyl Ether	3.123	73	14603	1.986	ug/l	93
25) 2-Butanone	4.574	43	146061	71.230	ug/l	92
29) Tetrahydrofuran	5.013	42	405158	302.736	ug/l	99
40) Benzene	6.044	78	36396	3.718	ug/l	96
49) 1,4-Dioxane	7.677	88	5965	83.049	ug/l	93
51) 4-Methyl-2-Pentanone	8.580	43	14416	3.662	ug/l #	82
52) Toluene	8.726	92	8905	1.458	ug/l	87
65) Chlorobenzene	10.079	112	6840	0.990	ug/l	98
67) Ethyl Benzene	10.201	91	28195	2.361	ug/l	98
68) m/p-Xylenes	10.305	106	26653	5.826	ug/l	99
69) o-Xylene	10.646	106	17675	3.905	ug/l	95
73) Isopropylbenzene	10.963	105	7106	0.649	ug/l	96
80) 1,3,5-Trimethylbenzene	11.457	105	5744	0.626	ug/l	96
84) 1,2,4-Trimethylbenzene	11.756	105	22987	2.588	ug/l	96
86) p-Isopropyltoluene	12.012	119	3930	0.416	ug/l #	64
88) 1,4-Dichlorobenzene	12.043	146	19180	3.670	ug/l	90
91) 1,2-Dichlorobenzene	12.335	146	1574	0.294	ug/l	97
95) Naphthalene	13.780	128	103226	8.846	ug/l	99

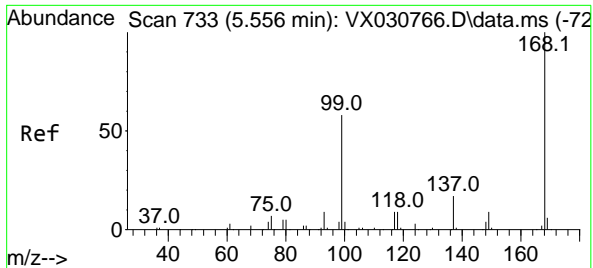
(#) = qualifier out of range (m) = manual integration (+) = signals summed

Data Path : Z:\voasrv\HPCHEM1\MSVOA\_X\Data\VX082622\  
 Data File : VX030817.D  
 Acq On : 26 Aug 2022 12:18  
 Operator : JC/MD  
 Sample : N4246-01  
 Misc : 5.0mL/MSVOA\_X/WATER  
 ALS Vial : 7 Sample Multiplier: 1

Instrument :  
 MSVOA\_X  
 ClientSampleId :  
 220817015-02-VOA

Quant Time: Aug 27 02:38:24 2022  
 Quant Method : Z:\voasrv\HPCHEM1\MSVOA\_X\Method\82X082522W.M  
 Quant Title : SW846 8260  
 QLast Update : Fri Aug 26 02:03:28 2022  
 Response via : Initial Calibration

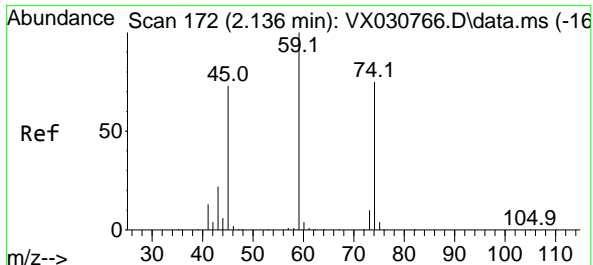
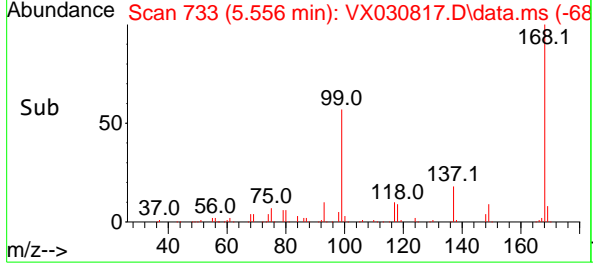
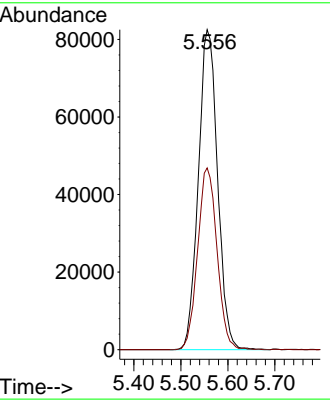
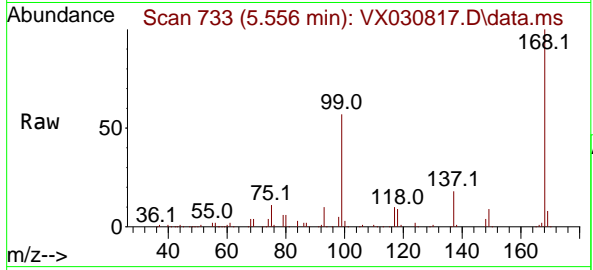




#1  
 Pentafluorobenzene  
 Concen: 50.000 ug/l  
 RT: 5.556 min Scan# 71  
 Delta R.T. -0.000 min  
 Lab File: VX030817.D  
 Acq: 26 Aug 2022 12:18

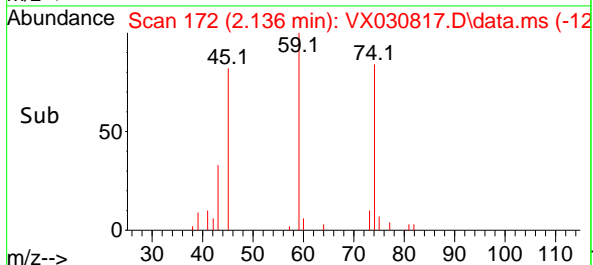
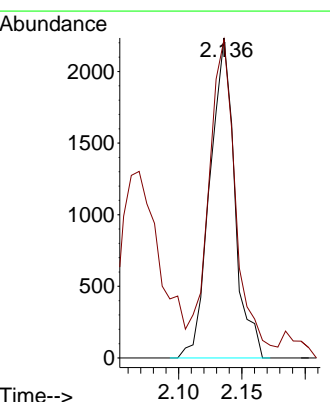
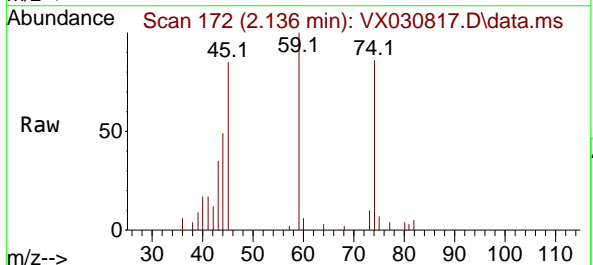
Instrument : MSVOA\_X  
 ClientSampleId : 220817015-02-VOA

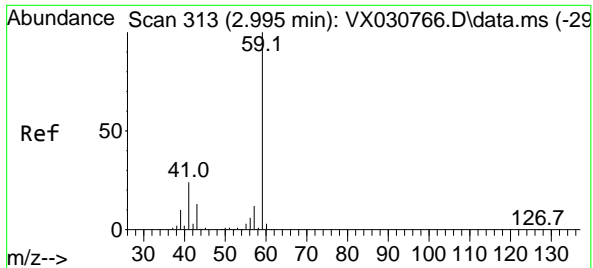
Tgt Ion:168 Resp: 234188  
 Ion Ratio Lower Upper  
 168 100  
 99 56.8 44.0 66.0



#8  
 Diethyl Ether  
 Concen: 2.238 ug/l  
 RT: 2.136 min Scan# 172  
 Delta R.T. -0.000 min  
 Lab File: VX030817.D  
 Acq: 26 Aug 2022 12:18

Tgt Ion: 74 Resp: 3035  
 Ion Ratio Lower Upper  
 74 100  
 45 100.4 51.5 154.7

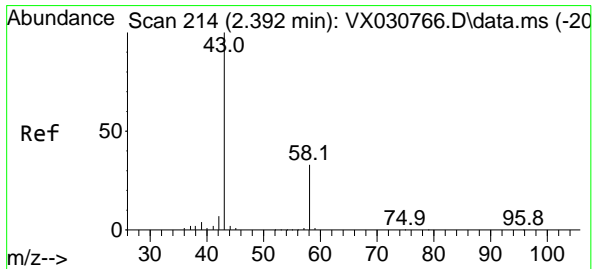
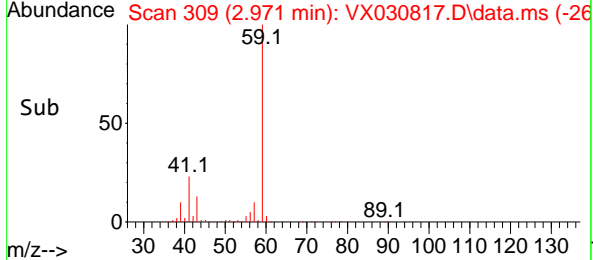
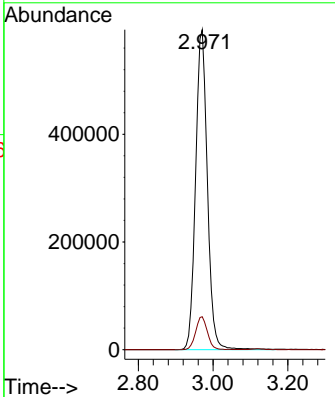
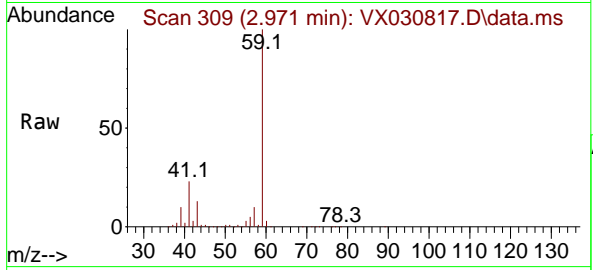




#11  
 Tert butyl alcohol  
 Concen: 2168.205 ug/l  
 RT: 2.971 min Scan# 309  
 Delta R.T. -0.025 min  
 Lab File: VX030817.D  
 Acq: 26 Aug 2022 12:18

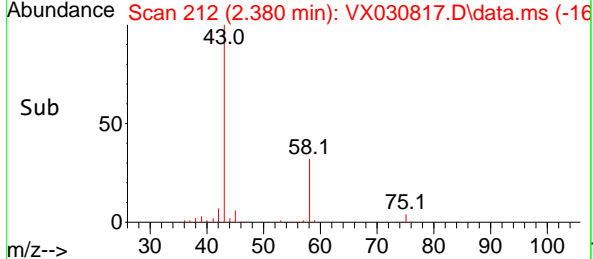
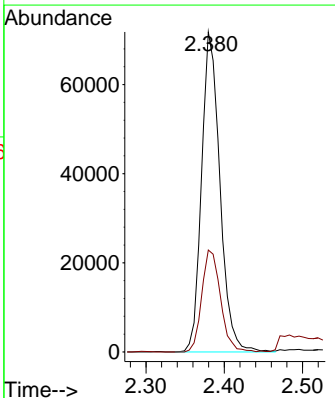
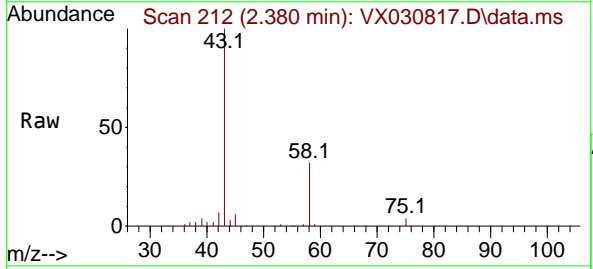
Instrument : MSVOA\_X  
 ClientSampleId : 220817015-02-VOA

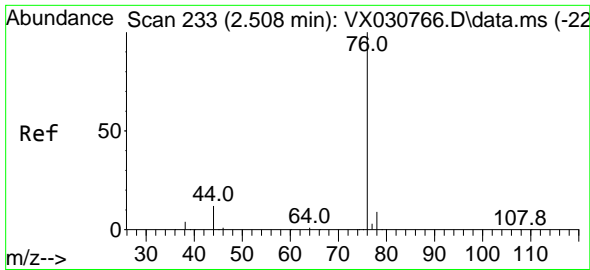
Tgt Ion: 59 Resp: 1296561  
 Ion Ratio Lower Upper  
 59 100  
 57 10.3 7.4 11.2



#16  
 Acetone  
 Concen: 91.787 ug/l  
 RT: 2.380 min Scan# 212  
 Delta R.T. -0.012 min  
 Lab File: VX030817.D  
 Acq: 26 Aug 2022 12:18

Tgt Ion: 43 Resp: 116842  
 Ion Ratio Lower Upper  
 43 100  
 58 31.8 27.7 41.5

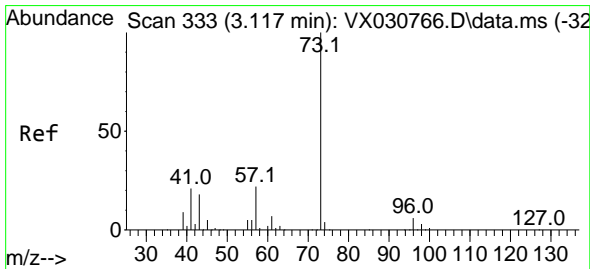
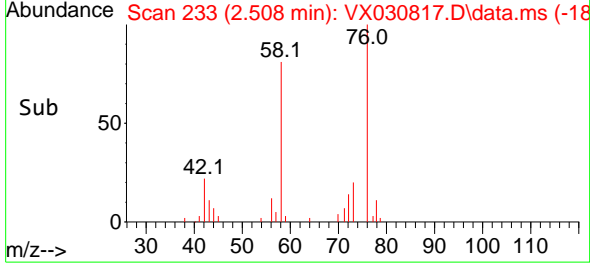
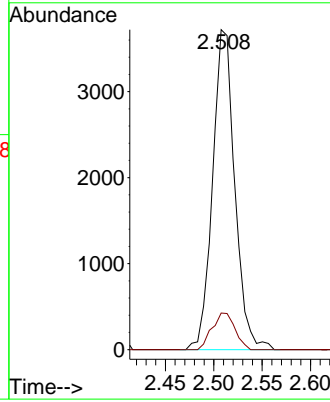
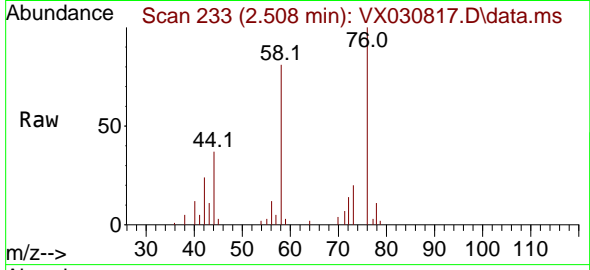




#17  
 Carbon Disulfide  
 Concen: 0.732 ug/l  
 RT: 2.508 min Scan# 21  
 Delta R.T. -0.000 min  
 Lab File: VX030817.D  
 Acq: 26 Aug 2022 12:18

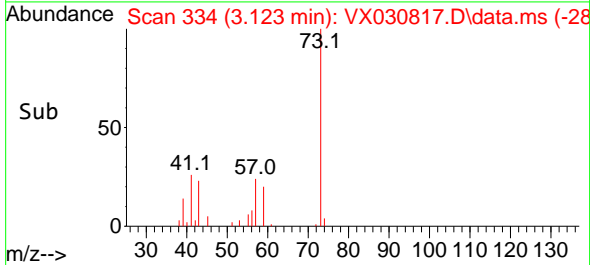
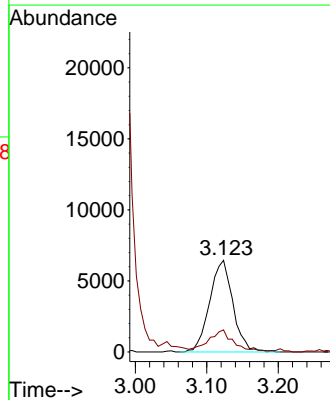
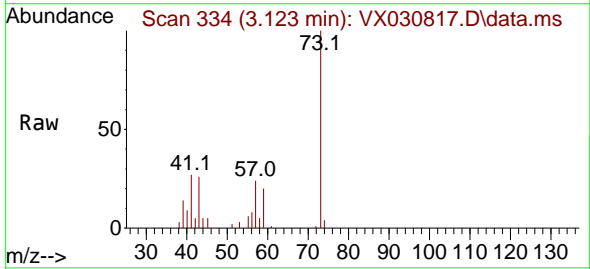
Instrument : MSVOA\_X  
 ClientSampleId : 220817015-02-VOA

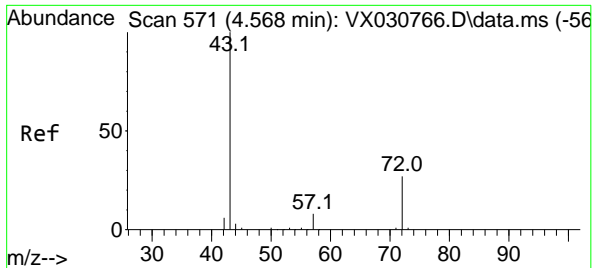
Tgt Ion: 76 Resp: 5921  
 Ion Ratio Lower Upper  
 76 100  
 78 11.4 7.8 11.6



#19  
 Methyl tert-butyl Ether  
 Concen: 1.986 ug/l  
 RT: 3.123 min Scan# 334  
 Delta R.T. 0.006 min  
 Lab File: VX030817.D  
 Acq: 26 Aug 2022 12:18

Tgt Ion: 73 Resp: 14603  
 Ion Ratio Lower Upper  
 73 100  
 57 20.4 19.0 28.6

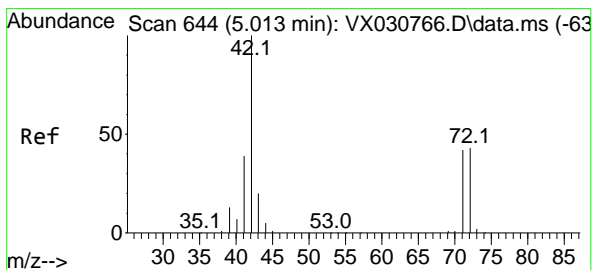
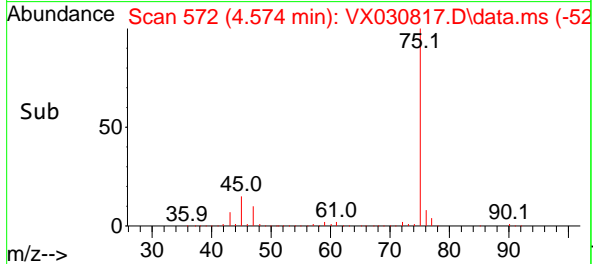
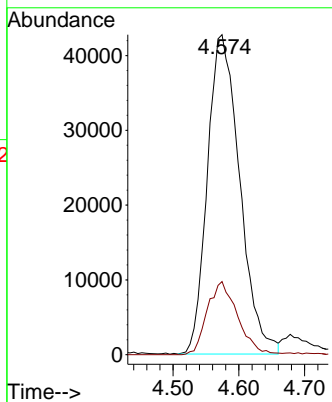
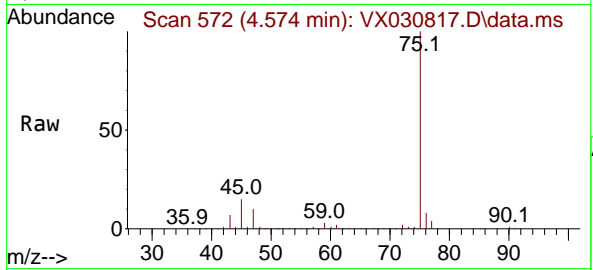




#25  
 2-Butanone  
 Concen: 71.230 ug/l  
 RT: 4.574 min Scan# 572  
 Delta R.T. 0.006 min  
 Lab File: VX030817.D  
 Acq: 26 Aug 2022 12:18

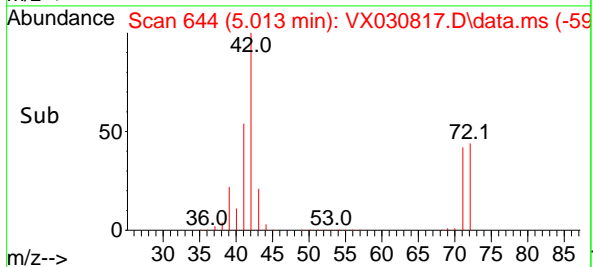
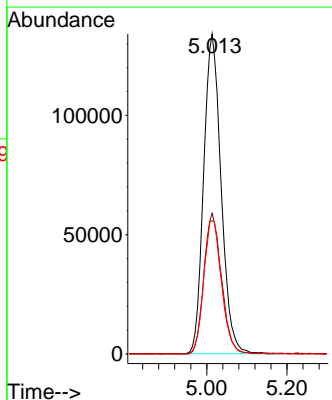
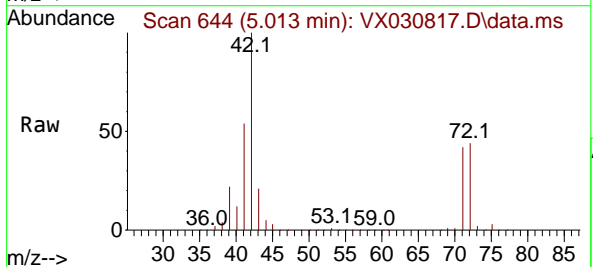
Instrument : MSVOA\_X  
 ClientSampleId : 220817015-02-VOA

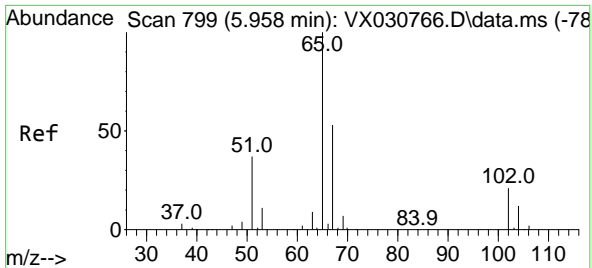
Tgt Ion: 43 Resp: 146061  
 Ion Ratio Lower Upper  
 43 100  
 72 22.9 21.7 32.5



#29  
 Tetrahydrofuran  
 Concen: 302.736 ug/l  
 RT: 5.013 min Scan# 644  
 Delta R.T. 0.000 min  
 Lab File: VX030817.D  
 Acq: 26 Aug 2022 12:18

Tgt Ion: 42 Resp: 405158  
 Ion Ratio Lower Upper  
 42 100  
 72 44.4 36.5 54.7  
 71 42.6 33.9 50.9

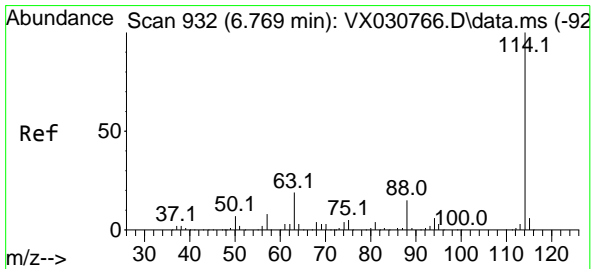
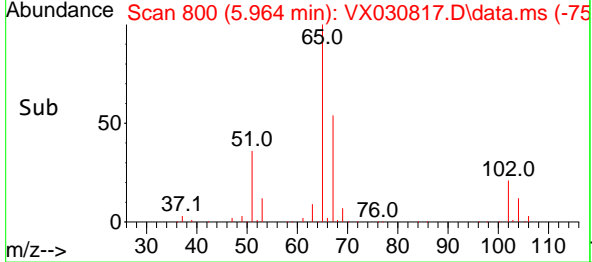
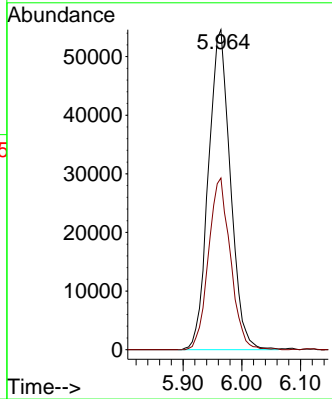
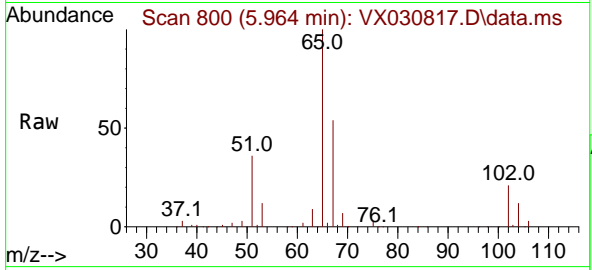




#33  
 1,2-Dichloroethane-d4  
 Concen: 51.438 ug/l  
 RT: 5.964 min Scan# 800  
 Delta R.T. 0.006 min  
 Lab File: VX030817.D  
 Acq: 26 Aug 2022 12:18

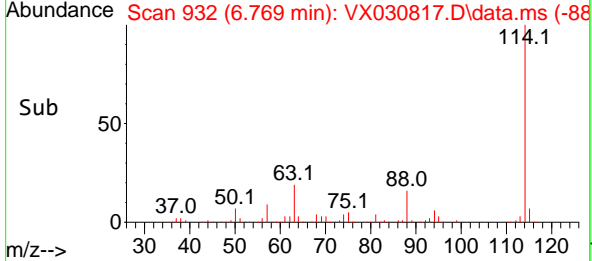
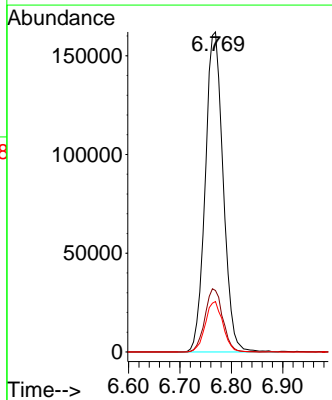
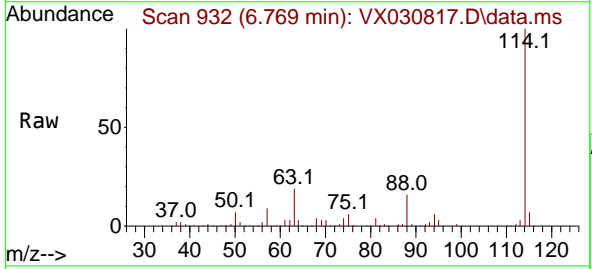
Instrument : MSVOA\_X  
 ClientSampleId : 220817015-02-VOA

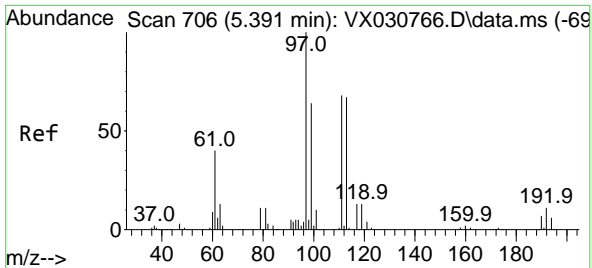
Tgt Ion: 65 Resp: 141696  
 Ion Ratio Lower Upper  
 65 100  
 67 53.6 0.0 109.6



#34  
 1,4-Difluorobenzene  
 Concen: 50.000 ug/l  
 RT: 6.769 min Scan# 932  
 Delta R.T. 0.000 min  
 Lab File: VX030817.D  
 Acq: 26 Aug 2022 12:18

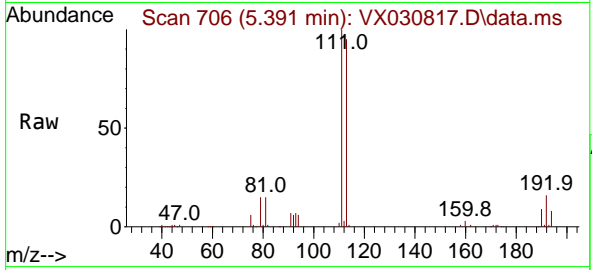
Tgt Ion:114 Resp: 390914  
 Ion Ratio Lower Upper  
 114 100  
 63 19.2 0.0 38.4  
 88 15.8 0.0 31.8





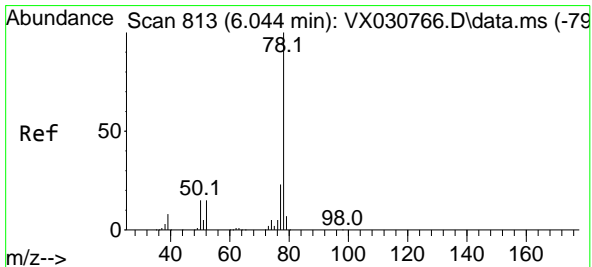
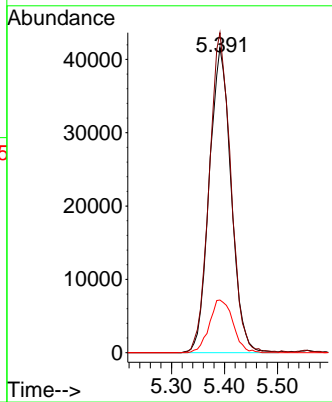
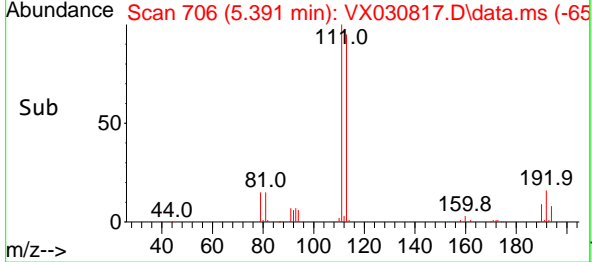
#35  
 Dibromofluoromethane  
 Concen: 49.449 ug/l  
 RT: 5.391 min Scan# 706  
 Delta R.T. 0.000 min  
 Lab File: VX030817.D  
 Acq: 26 Aug 2022 12:18

Instrument : MSVOA\_X  
 ClientSampleId : 220817015-02-VOA

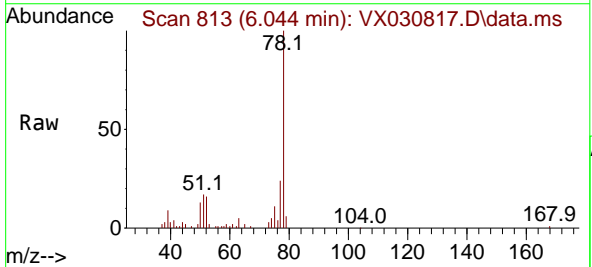


Tgt Ion: 113 Resp: 118801

Ion	Ratio	Lower	Upper
113	100		
111	103.7	83.2	124.8
192	18.7	14.8	22.2

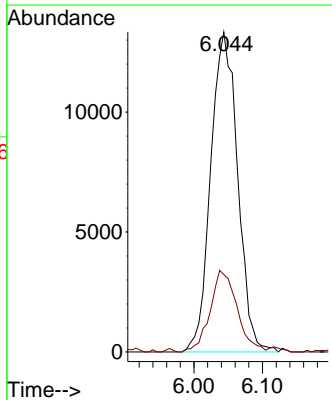
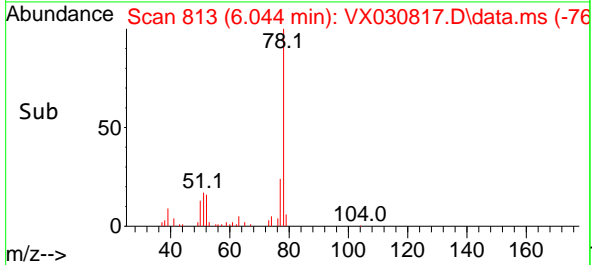


#40  
 Benzene  
 Concen: 3.718 ug/l  
 RT: 6.044 min Scan# 813  
 Delta R.T. -0.000 min  
 Lab File: VX030817.D  
 Acq: 26 Aug 2022 12:18

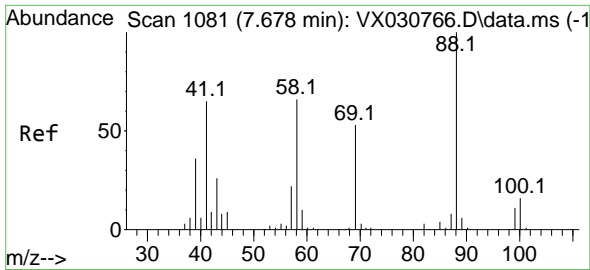


Tgt Ion: 78 Resp: 36396

Ion	Ratio	Lower	Upper
78	100		
77	24.2	18.0	27.0

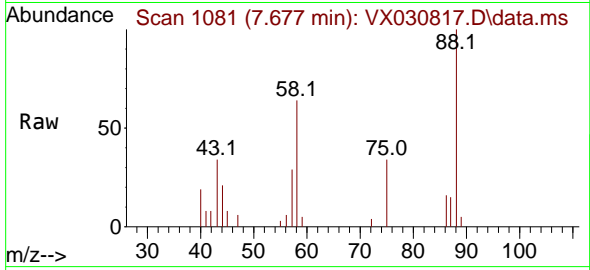




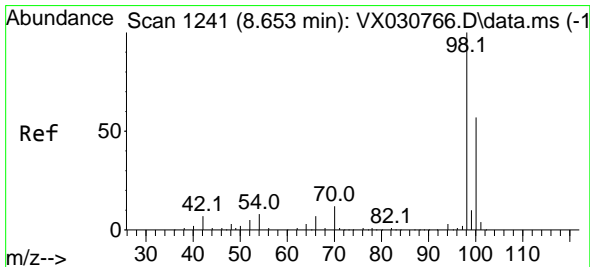
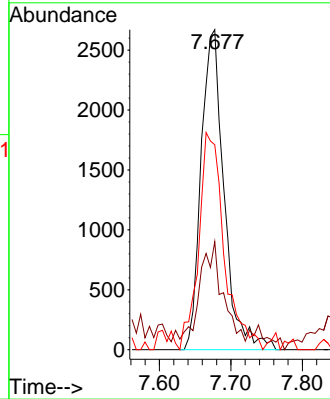
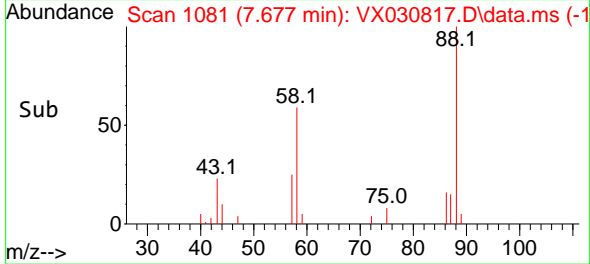


#49  
 1,4-Dioxane  
 Concen: 83.049 ug/l  
 RT: 7.677 min Scan# 1081  
 Delta R.T. -0.001 min  
 Lab File: VX030817.D  
 Acq: 26 Aug 2022 12:18

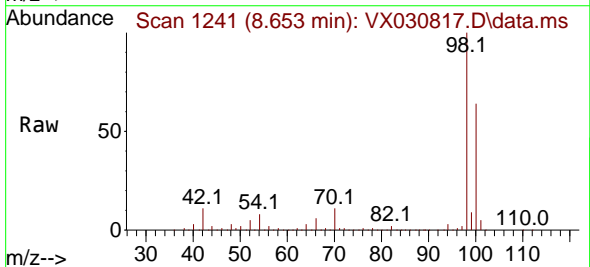
Instrument : MSVOA\_X  
 ClientSampleId : 220817015-02-VOA



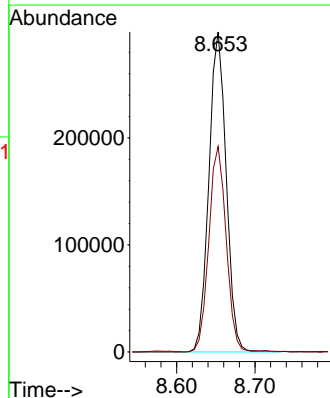
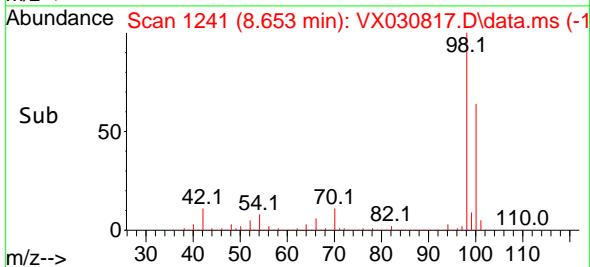
Tgt Ion: 88 Resp: 5965  
 Ion Ratio Lower Upper  
 88 100  
 43 30.6 23.8 35.8  
 58 74.9 53.8 80.6

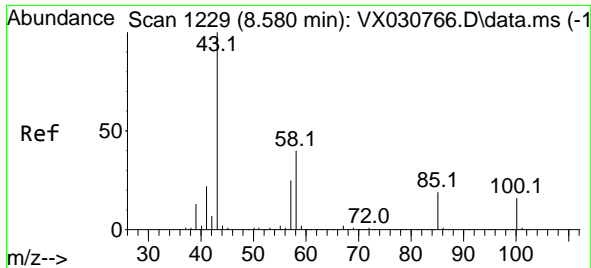


#50  
 Toluene-d8  
 Concen: 54.726 ug/l  
 RT: 8.653 min Scan# 1241  
 Delta R.T. -0.000 min  
 Lab File: VX030817.D  
 Acq: 26 Aug 2022 12:18



Tgt Ion: 98 Resp: 458164  
 Ion Ratio Lower Upper  
 98 100  
 100 64.2 52.3 78.5

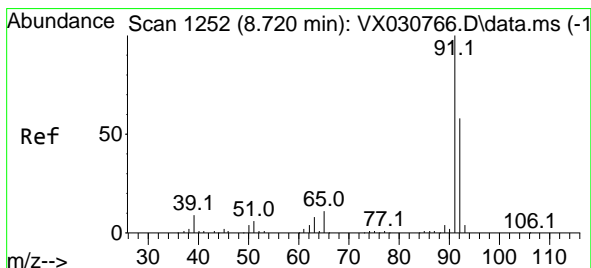
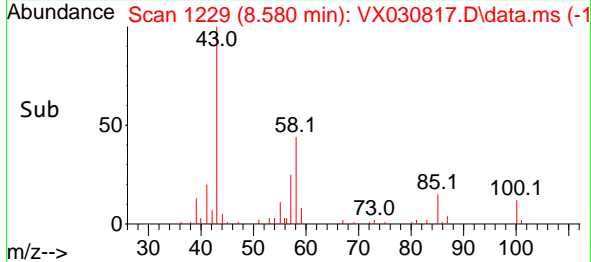
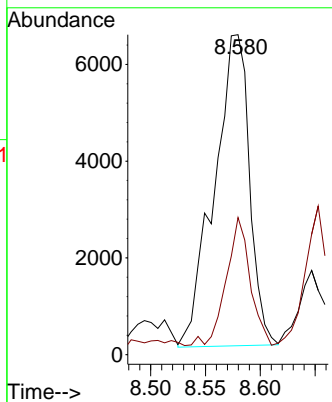
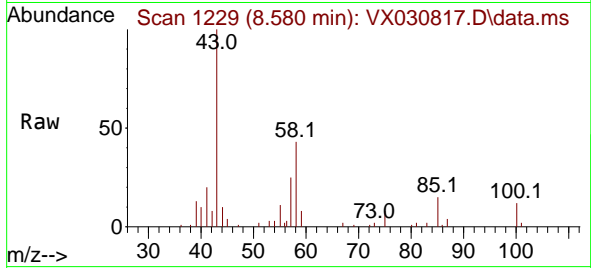




#51  
 4-Methyl-2-Pentanone  
 Concen: 3.662 ug/l  
 RT: 8.580 min Scan# 11  
 Delta R.T. -0.000 min  
 Lab File: VX030817.D  
 Acq: 26 Aug 2022 12:18

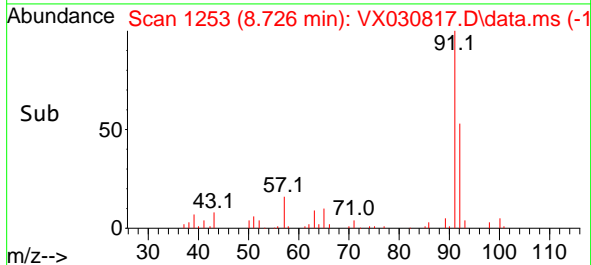
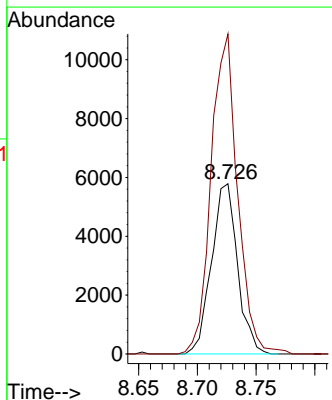
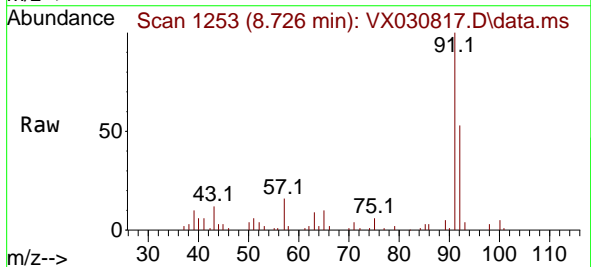
Instrument : MSVOA\_X  
 ClientSampleId : 220817015-02-VOA

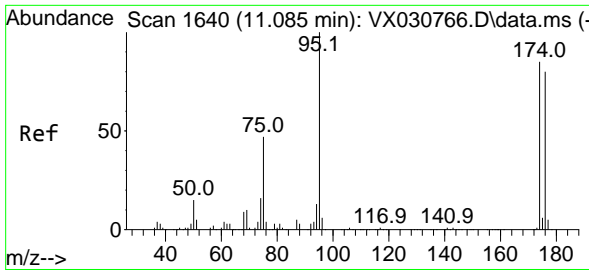
Tgt Ion: 43 Resp: 14416  
 Ion Ratio Lower Upper  
 43 100  
 58 28.1 31.4 47.2#



#52  
 Toluene  
 Concen: 1.458 ug/l  
 RT: 8.726 min Scan# 1253  
 Delta R.T. 0.006 min  
 Lab File: VX030817.D  
 Acq: 26 Aug 2022 12:18

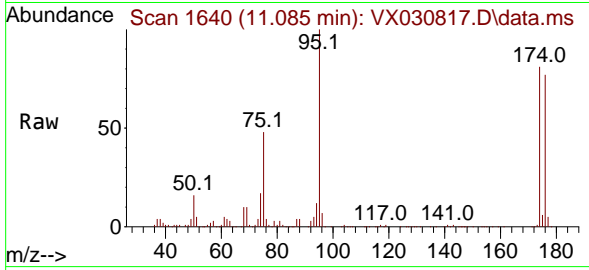
Tgt Ion: 92 Resp: 8905  
 Ion Ratio Lower Upper  
 92 100  
 91 191.4 139.2 208.8



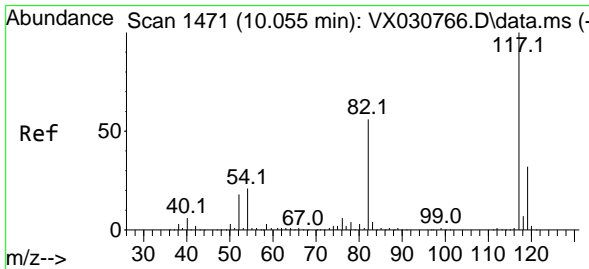
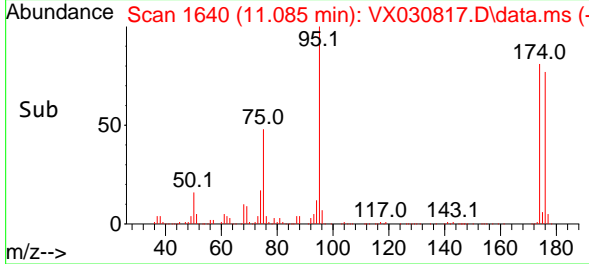
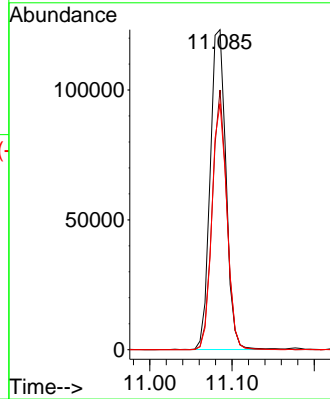


#62  
 4-Bromofluorobenzene  
 Concen: 52.673 ug/l  
 RT: 11.085 min Scan# 1  
 Delta R.T. 0.000 min  
 Lab File: VX030817.D  
 Acq: 26 Aug 2022 12:18

Instrument :  
 MSVOA\_X  
 ClientSampleId :  
 220817015-02-VOA

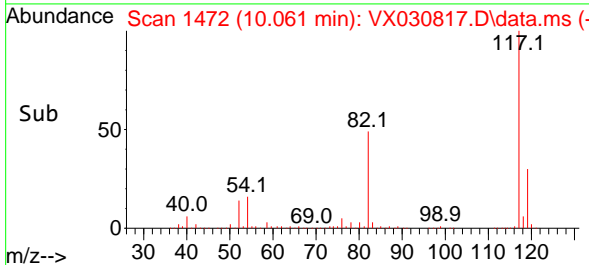
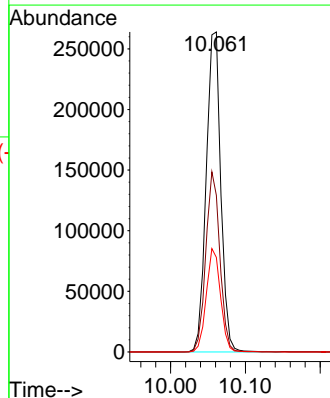
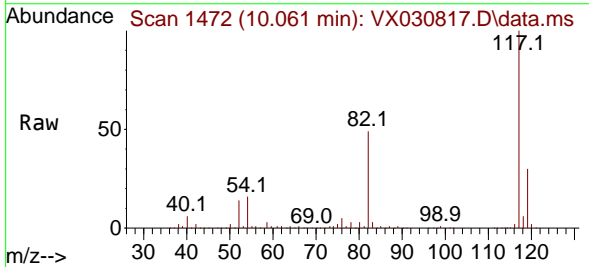


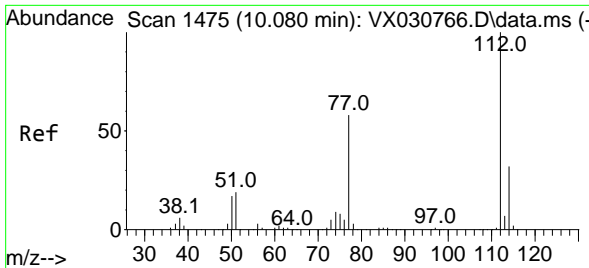
Tgt Ion: 95 Resp: 164174  
 Ion Ratio Lower Upper  
 95 100  
 174 74.8 0.0 149.0  
 176 73.6 0.0 146.0



#63  
 Chlorobenzene-d5  
 Concen: 50.000 ug/l  
 RT: 10.061 min Scan# 1472  
 Delta R.T. 0.006 min  
 Lab File: VX030817.D  
 Acq: 26 Aug 2022 12:18

Tgt Ion: 117 Resp: 357258  
 Ion Ratio Lower Upper  
 117 100  
 82 49.0 42.7 64.1  
 119 29.5 25.4 38.2

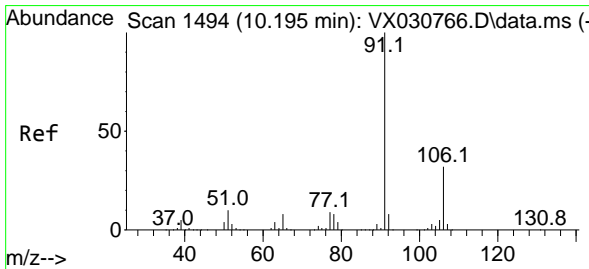
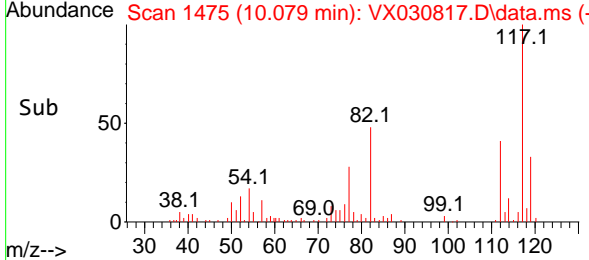
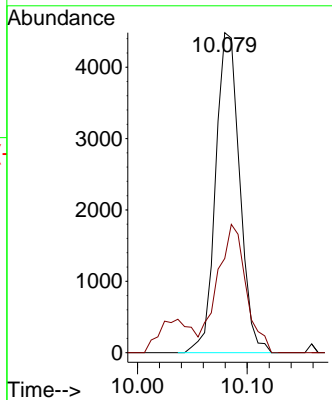
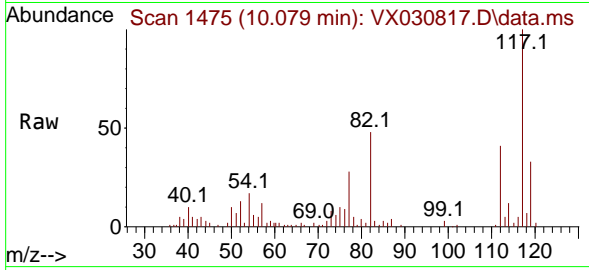




#65  
 Chlorobenzene  
 Concen: 0.990 ug/l  
 RT: 10.079 min Scan# 1475  
 Delta R.T. -0.001 min  
 Lab File: VX030817.D  
 Acq: 26 Aug 2022 12:18

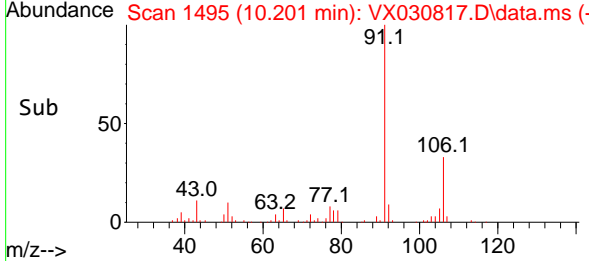
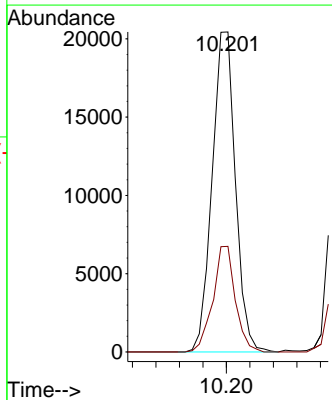
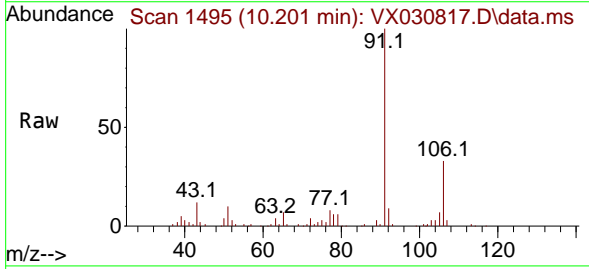
Instrument : MSVOA\_X  
 ClientSampleId : 220817015-02-VOA

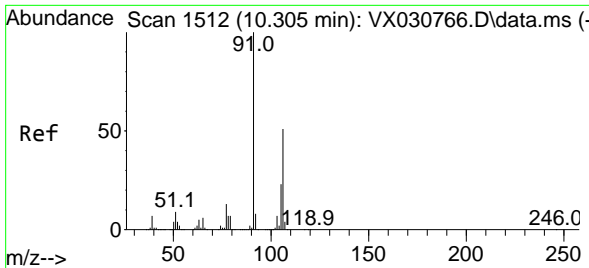
Tgt Ion:112 Resp: 6840  
 Ion Ratio Lower Upper  
 112 100  
 114 29.4 24.6 36.8



#67  
 Ethyl Benzene  
 Concen: 2.361 ug/l  
 RT: 10.201 min Scan# 1495  
 Delta R.T. 0.006 min  
 Lab File: VX030817.D  
 Acq: 26 Aug 2022 12:18

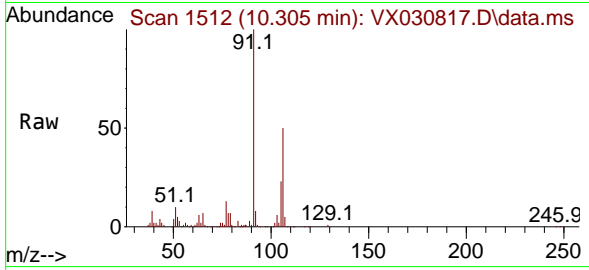
Tgt Ion: 91 Resp: 28195  
 Ion Ratio Lower Upper  
 91 100  
 106 33.0 25.5 38.3



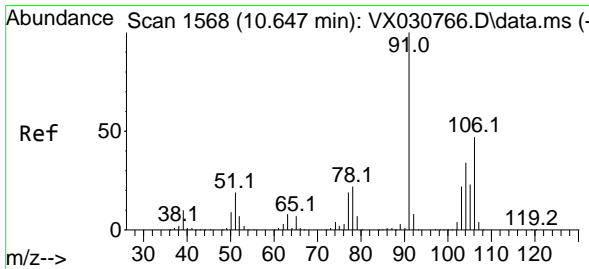
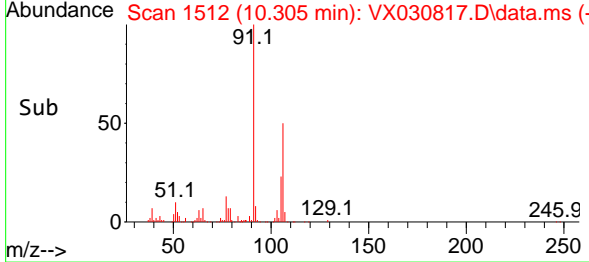
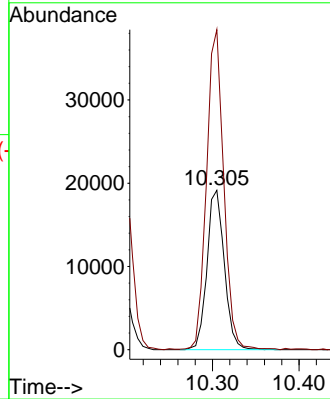


#68  
 m/p-Xylenes  
 Concen: 5.826 ug/l  
 RT: 10.305 min Scan# 1512  
 Delta R.T. 0.000 min  
 Lab File: VX030817.D  
 Acq: 26 Aug 2022 12:18

Instrument : MSVOA\_X  
 ClientSampleId : 220817015-02-VOA

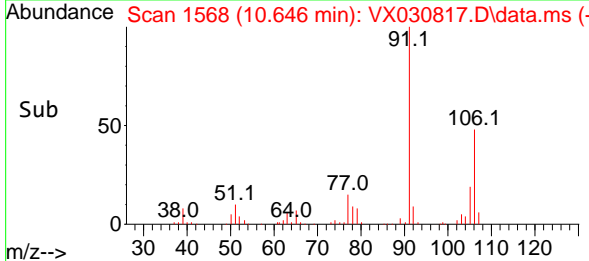
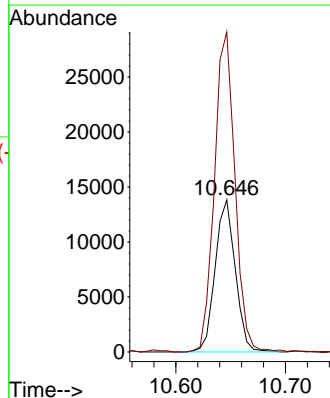
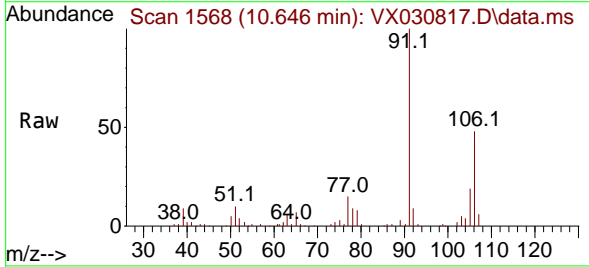


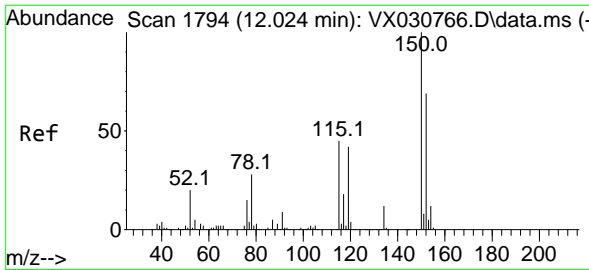
Tgt Ion:106 Resp: 26653  
 Ion Ratio Lower Upper  
 106 100  
 91 199.3 158.2 237.4



#69  
 o-Xylene  
 Concen: 3.905 ug/l  
 RT: 10.646 min Scan# 1568  
 Delta R.T. -0.001 min  
 Lab File: VX030817.D  
 Acq: 26 Aug 2022 12:18

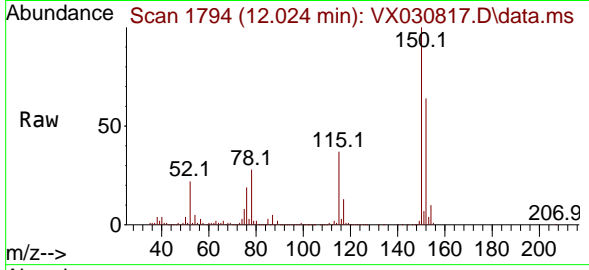
Tgt Ion:106 Resp: 17675  
 Ion Ratio Lower Upper  
 106 100  
 91 214.9 103.8 311.6



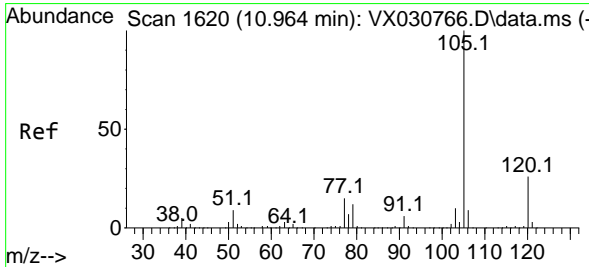
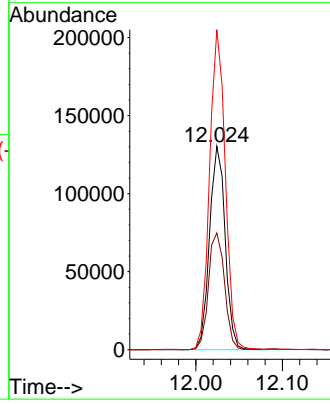
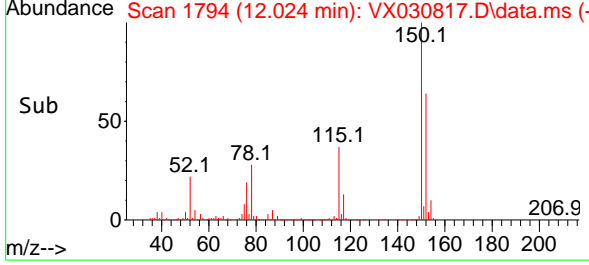


#72  
 1,4-Dichlorobenzene-d4  
 Concen: 50.000 ug/l  
 RT: 12.024 min Scan# 11  
 Delta R.T. 0.000 min  
 Lab File: VX030817.D  
 Acq: 26 Aug 2022 12:18

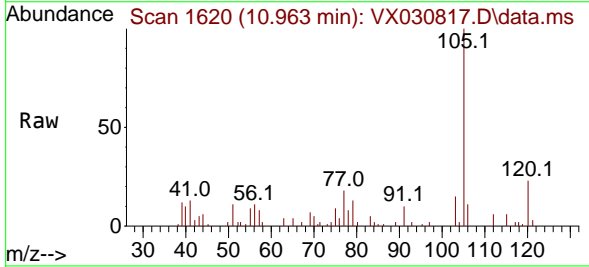
Instrument :  
 MSVOA\_X  
 ClientSampleId :  
 220817015-02-VOA



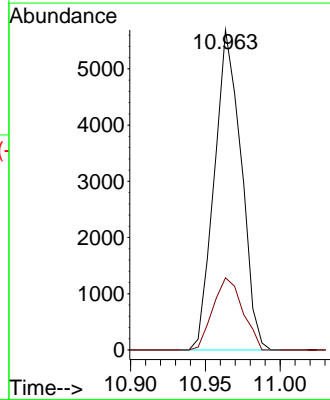
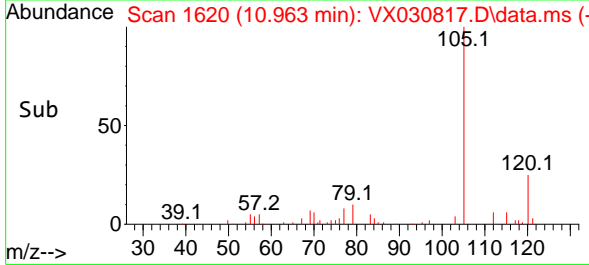
Tgt Ion:152 Resp: 163502  
 Ion Ratio Lower Upper  
 152 100  
 115 59.1 40.5 121.5  
 150 158.4 0.0 347.0

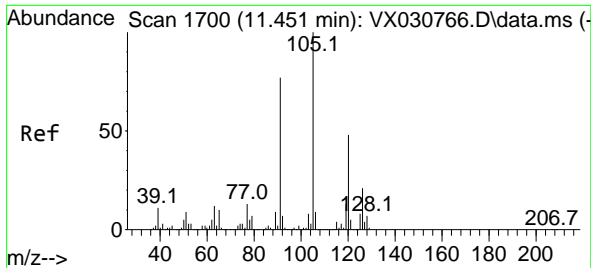


#73  
 Isopropylbenzene  
 Concen: 0.649 ug/l  
 RT: 10.963 min Scan# 1620  
 Delta R.T. -0.001 min  
 Lab File: VX030817.D  
 Acq: 26 Aug 2022 12:18



Tgt Ion:105 Resp: 7106  
 Ion Ratio Lower Upper  
 105 100  
 120 24.9 13.5 40.4

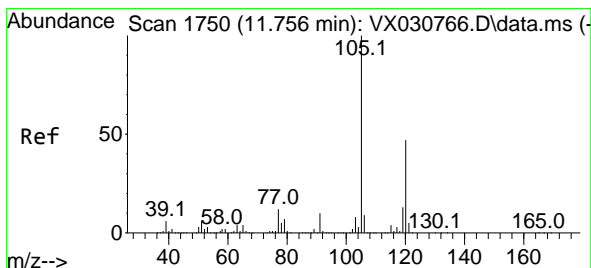
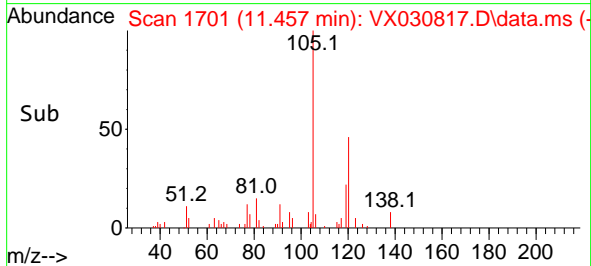
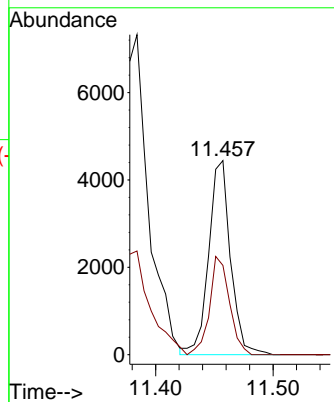
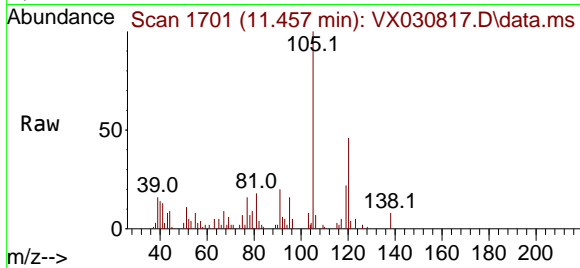




#80  
 1,3,5-Trimethylbenzene  
 Concen: 0.626 ug/l  
 RT: 11.457 min Scan# 1701  
 Delta R.T. 0.006 min  
 Lab File: VX030817.D  
 Acq: 26 Aug 2022 12:18

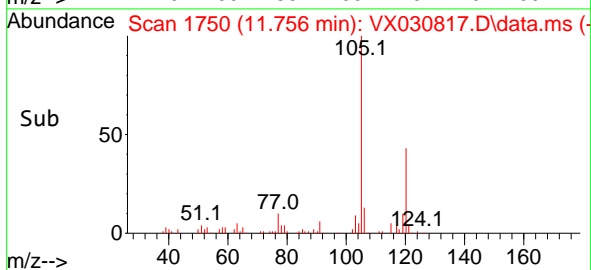
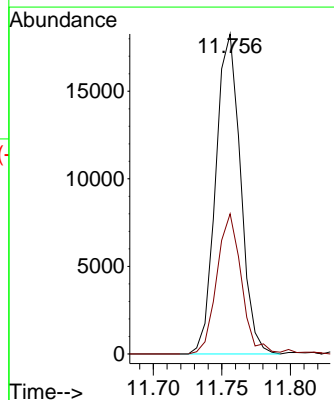
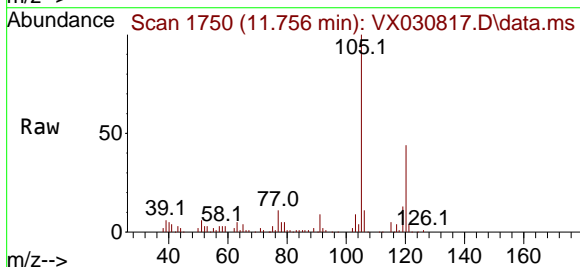
Instrument :  
 MSVOA\_X  
 ClientSampleId :  
 220817015-02-VOA

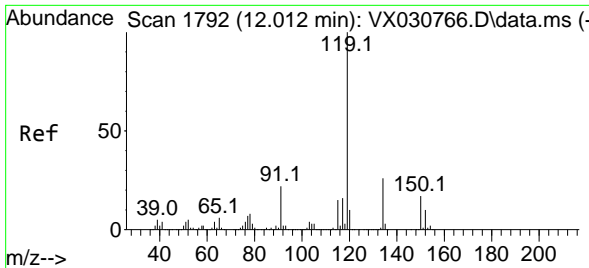
Tgt Ion:105 Resp: 5744  
 Ion Ratio Lower Upper  
 105 100  
 120 46.0 24.4 73.2



#84  
 1,2,4-Trimethylbenzene  
 Concen: 2.588 ug/l  
 RT: 11.756 min Scan# 1750  
 Delta R.T. -0.000 min  
 Lab File: VX030817.D  
 Acq: 26 Aug 2022 12:18

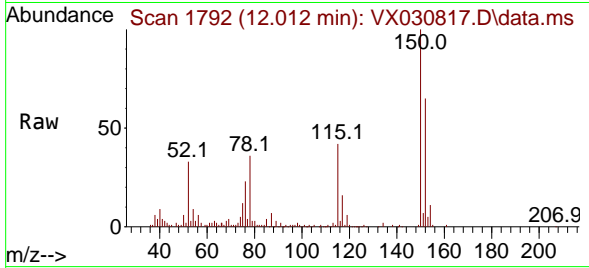
Tgt Ion:105 Resp: 22987  
 Ion Ratio Lower Upper  
 105 100  
 120 43.4 22.9 68.8



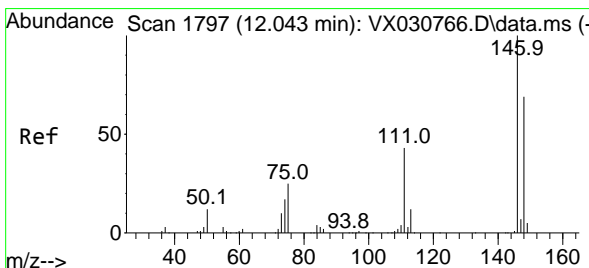
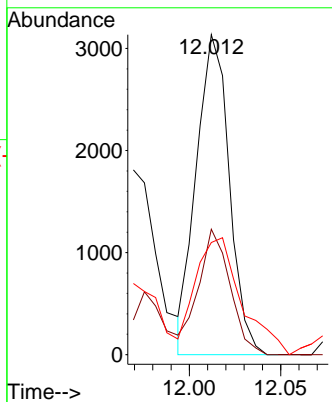
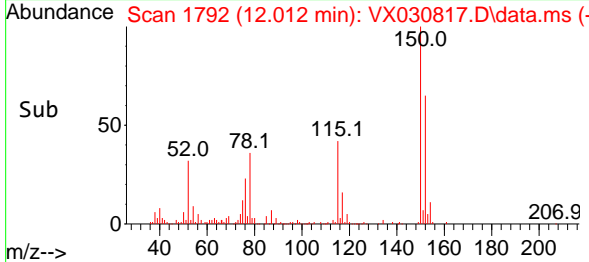


#86  
 p-Isopropyltoluene  
 Concen: 0.416 ug/l  
 RT: 12.012 min Scan# 1792  
 Delta R.T. 0.000 min  
 Lab File: VX030817.D  
 Acq: 26 Aug 2022 12:18

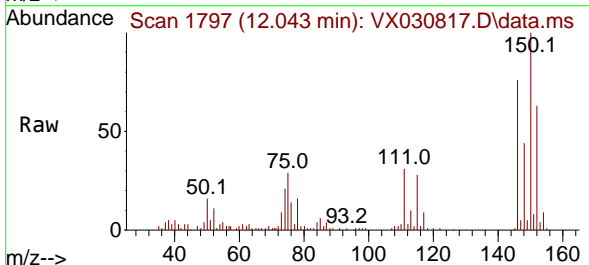
Instrument : MSVOA\_X  
 ClientSampleId : 220817015-02-VOA



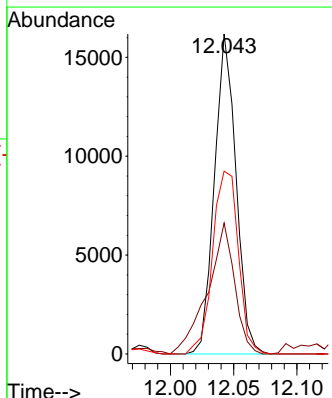
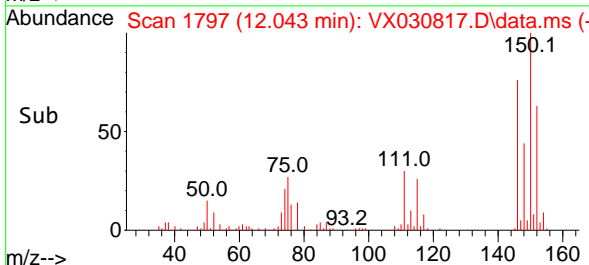
Tgt Ion:119 Resp: 3930  
 Ion Ratio Lower Upper  
 119 100  
 134 37.8 13.9 41.6  
 91 51.1 11.8 35.3#



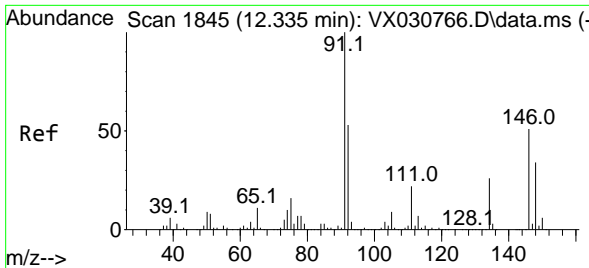
#88  
 1,4-Dichlorobenzene  
 Concen: 3.670 ug/l  
 RT: 12.043 min Scan# 1797  
 Delta R.T. -0.000 min  
 Lab File: VX030817.D  
 Acq: 26 Aug 2022 12:18



Tgt Ion:146 Resp: 19180  
 Ion Ratio Lower Upper  
 146 100  
 111 51.4 20.3 60.9  
 148 68.2 32.3 96.8

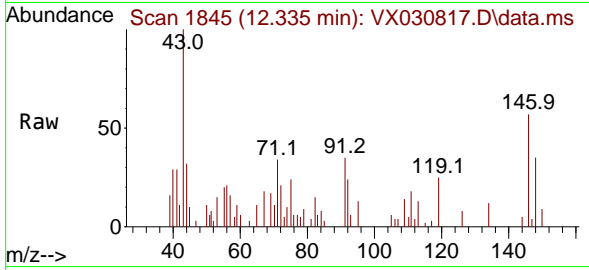






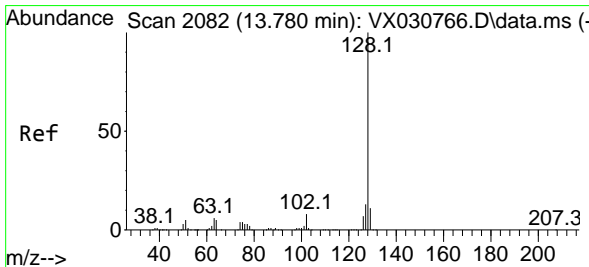
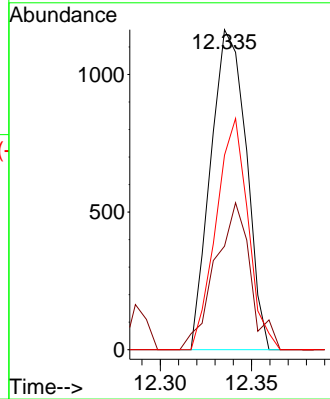
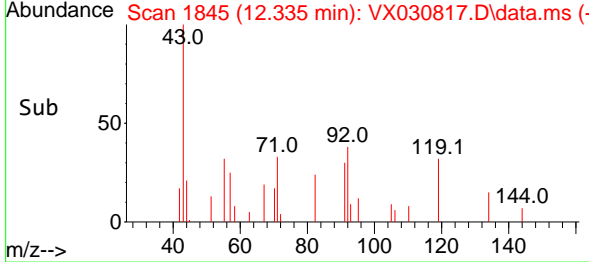
#91  
 1,2-Dichlorobenzene  
 Concen: 0.294 ug/l  
 RT: 12.335 min Scan# 1845  
 Delta R.T. 0.000 min  
 Lab File: VX030817.D  
 Acq: 26 Aug 2022 12:18

Instrument : MSVOA\_X  
 ClientSampleId : 220817015-02-VOA

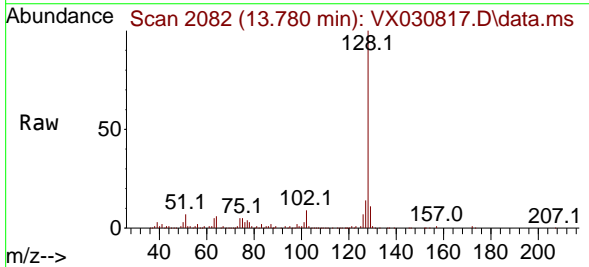


Tgt Ion:146 Resp: 1574

Ion	Ratio	Lower	Upper
146	100		
111	45.6	20.7	62.1
148	65.1	32.0	96.2



#95  
 Naphthalene  
 Concen: 8.846 ug/l  
 RT: 13.780 min Scan# 2082  
 Delta R.T. 0.000 min  
 Lab File: VX030817.D  
 Acq: 26 Aug 2022 12:18



Tgt Ion:128 Resp: 103226

Ion	Ratio	Lower	Upper
128	100		
127	12.9	10.2	15.2
129	11.4	8.6	13.0

