

Data Path : Z:\voasrv\HPCHEM1\MSVOA_X\Data\VX082622\
 Data File : VX030858.D
 Acq On : 27 Aug 2022 09:23
 Operator : JC/MD
 Sample : N4281-15
 Misc : 5.0mL/MSVOA_X/WATER
 ALS Vial : 50 Sample Multiplier: 1

Instrument :
 MSVOA_X
 ClientSampleId :
 RE123D2-20220819

Quant Time: Aug 27 22:22:20 2022
 Quant Method : Z:\voasrv\HPCHEM1\MSVOA_X\Method\82X082522W.M
 Quant Title : SW846 8260
 QLast Update : Fri Aug 26 02:03:28 2022
 Response via : Initial Calibration

Compound	R.T.	QIon	Response	Conc	Units	Dev(Min)

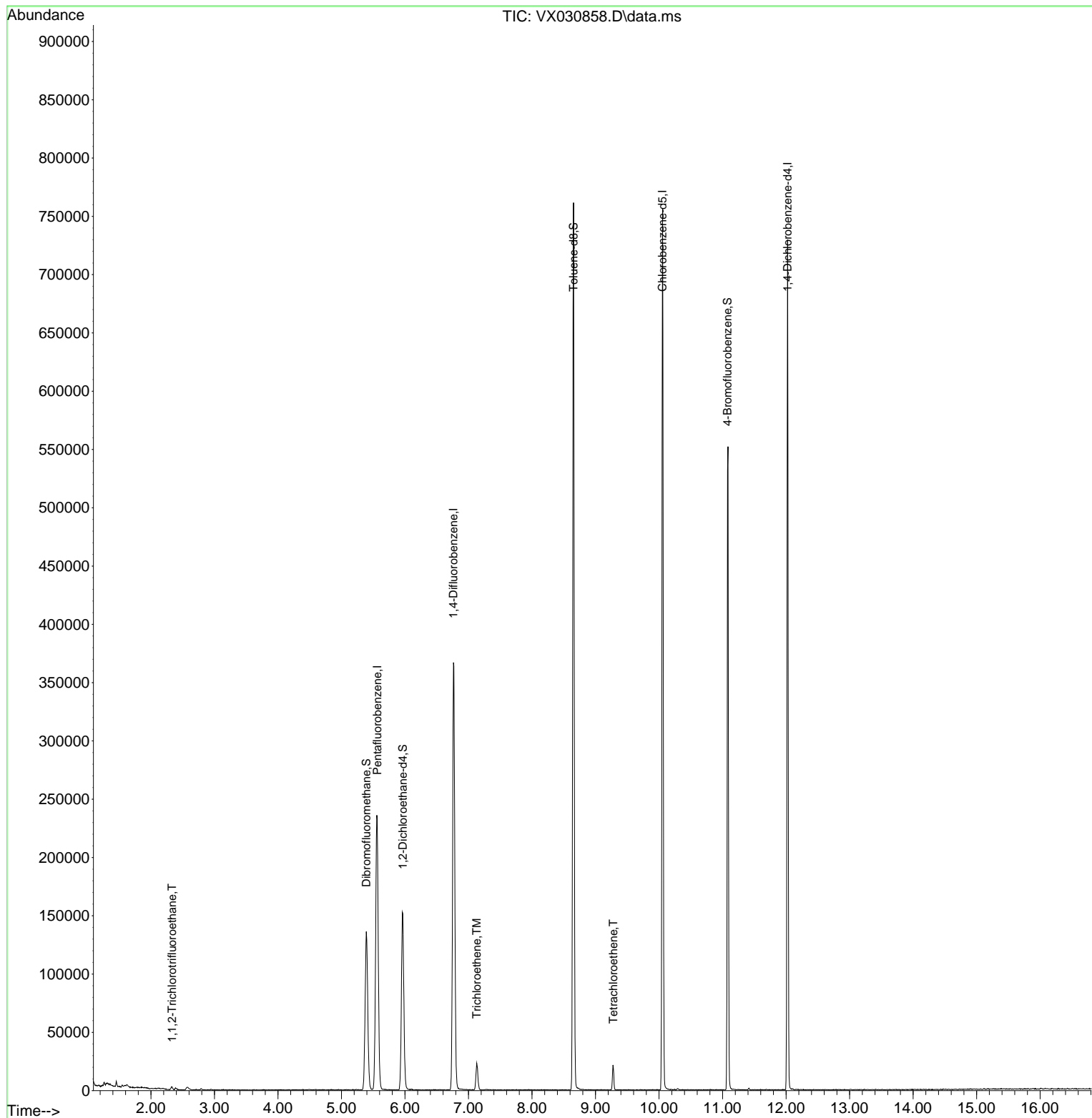
Internal Standards						
1) Pentafluorobenzene	5.562	168	221727	50.000	ug/l	0.00
34) 1,4-Difluorobenzene	6.763	114	380034	50.000	ug/l	0.00
63) Chlorobenzene-d5	10.055	117	341235	50.000	ug/l	0.00
72) 1,4-Dichlorobenzene-d4	12.024	152	147732	50.000	ug/l	0.00
System Monitoring Compounds						
33) 1,2-Dichloroethane-d4	5.964	65	148095	56.783	ug/l	0.00
Spiked Amount	50.000	Range	74 - 125	Recovery	=	113.560%
35) Dibromofluoromethane	5.391	113	119883	51.328	ug/l	0.00
Spiked Amount	50.000	Range	75 - 124	Recovery	=	102.660%
50) Toluene-d8	8.653	98	451253	55.444	ug/l	0.00
Spiked Amount	50.000	Range	86 - 113	Recovery	=	110.880%
62) 4-Bromofluorobenzene	11.079	95	150019	49.510	ug/l	0.00
Spiked Amount	50.000	Range	83 - 123	Recovery	=	99.020%
Target Compounds						
						Qvalue
9) 1,1,2-Trichlorotrifluo...	2.331	101	749	0.347	ug/l	90
44) Trichloroethene	7.129	130	8615	3.134	ug/l	88
64) Tetrachloroethene	9.281	164	4028	1.499	ug/l	95

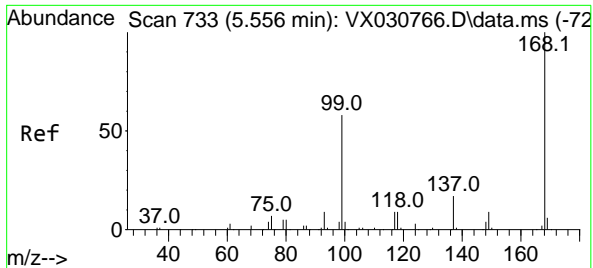
(#) = qualifier out of range (m) = manual integration (+) = signals summed

Data Path : Z:\voasrv\HPCHEM1\MSVOA_X\Data\VX082622\
Data File : VX030858.D
Acq On : 27 Aug 2022 09:23
Operator : JC/MD
Sample : N4281-15
Misc : 5.0mL/MSVOA_X/WATER
ALS Vial : 50 Sample Multiplier: 1

Instrument :
MSVOA_X
ClientSampleId :
RE123D2-20220819

Quant Time: Aug 27 22:22:20 2022
Quant Method : Z:\voasrv\HPCHEM1\MSVOA_X\Method\82X082522W.M
Quant Title : SW846 8260
QLast Update : Fri Aug 26 02:03:28 2022
Response via : Initial Calibration

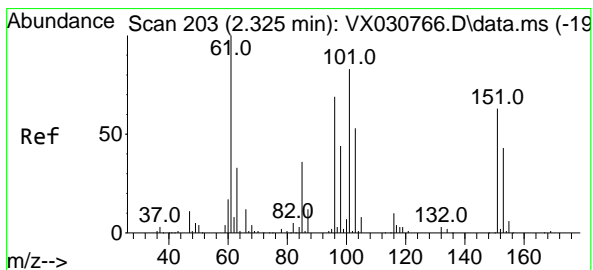
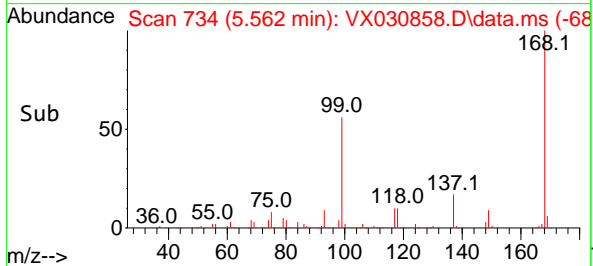
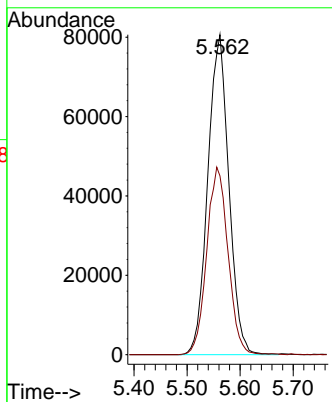
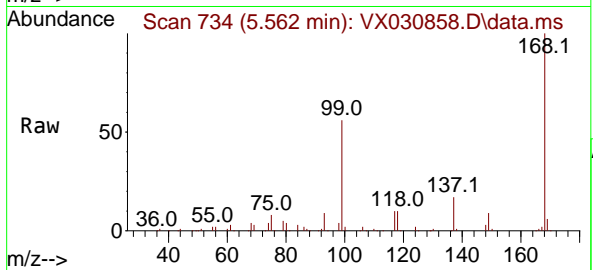




#1
 Pentafluorobenzene
 Concen: 50.000 ug/l
 RT: 5.562 min Scan# 71
 Delta R.T. 0.006 min
 Lab File: VX030858.D
 Acq: 27 Aug 2022 09:23

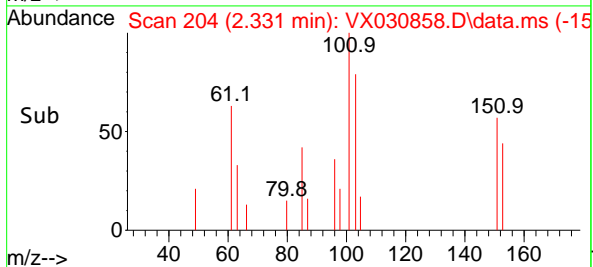
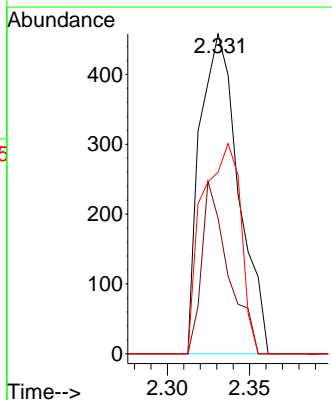
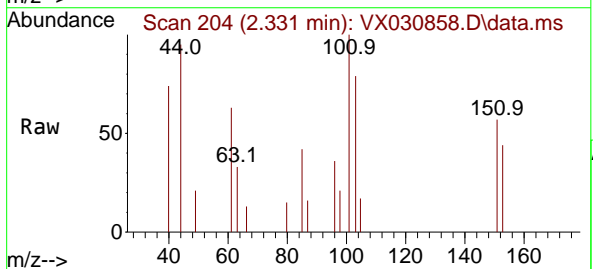
Instrument : MSVOA_X
 ClientSampleId : RE123D2-20220819

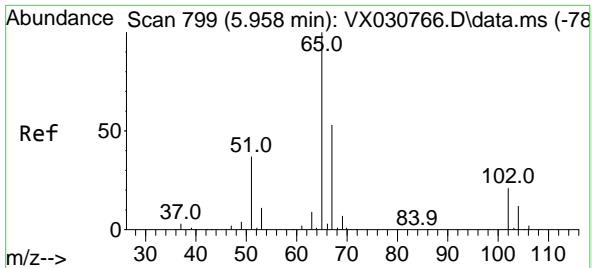
Tgt Ion:168 Resp: 221727
 Ion Ratio Lower Upper
 168 100
 99 55.8 44.0 66.0



#9
 1,1,2-Trichlorotrifluoroethane
 Concen: 0.347 ug/l
 RT: 2.331 min Scan# 204
 Delta R.T. 0.006 min
 Lab File: VX030858.D
 Acq: 27 Aug 2022 09:23

Tgt Ion:101 Resp: 749
 Ion Ratio Lower Upper
 101 100
 85 37.0 34.0 51.0
 151 65.3 59.4 89.0

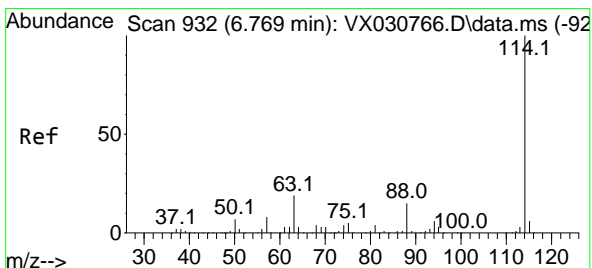
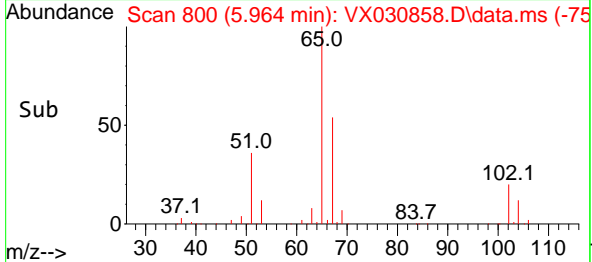
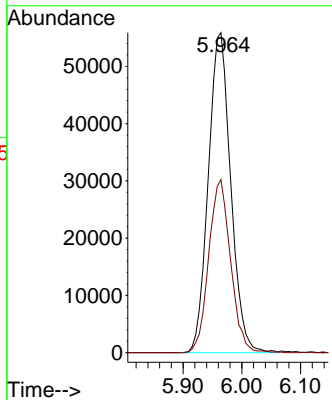
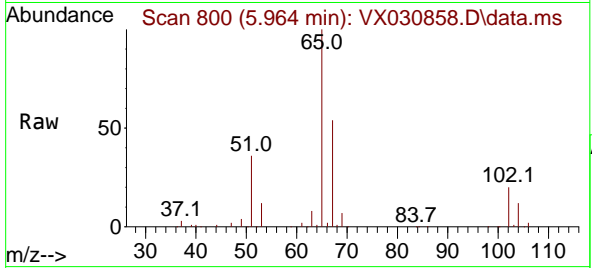




#33
 1,2-Dichloroethane-d4
 Concen: 56.783 ug/l
 RT: 5.964 min Scan# 80
 Delta R.T. 0.006 min
 Lab File: VX030858.D
 Acq: 27 Aug 2022 09:23

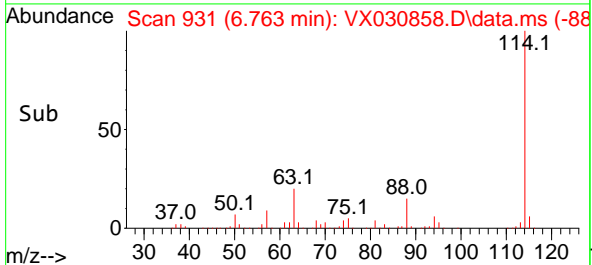
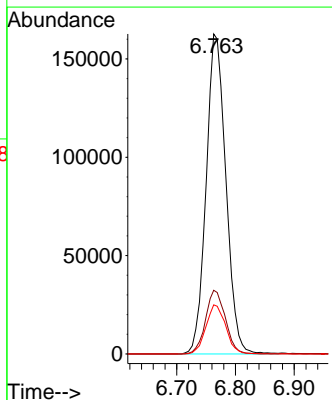
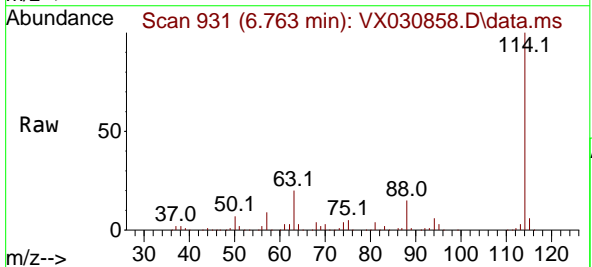
Instrument :
 MSVOA_X
 ClientSampleId :
 RE123D2-20220819

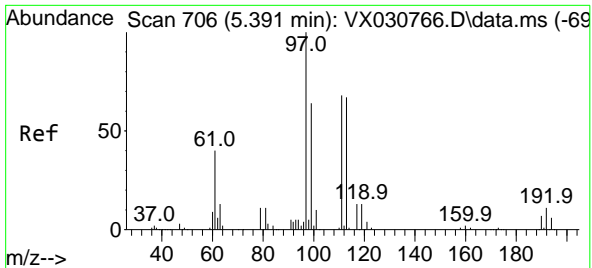
Tgt Ion: 65 Resp: 148095
 Ion Ratio Lower Upper
 65 100
 67 52.7 0.0 109.6



#34
 1,4-Difluorobenzene
 Concen: 50.000 ug/l
 RT: 6.763 min Scan# 931
 Delta R.T. -0.006 min
 Lab File: VX030858.D
 Acq: 27 Aug 2022 09:23

Tgt Ion:114 Resp: 380034
 Ion Ratio Lower Upper
 114 100
 63 19.9 0.0 38.4
 88 15.4 0.0 31.8



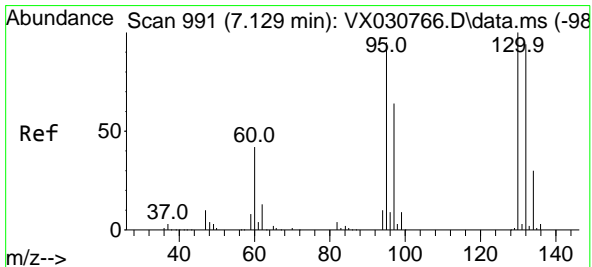
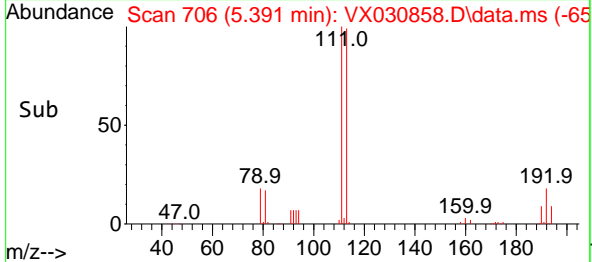
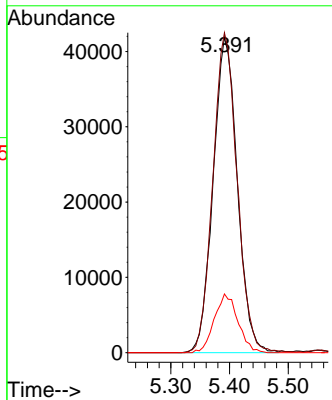
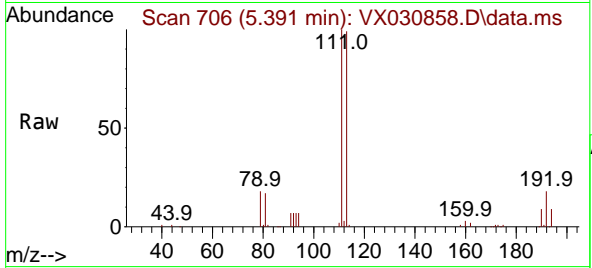


#35
 Dibromofluoromethane
 Concen: 51.328 ug/l
 RT: 5.391 min Scan# 706
 Delta R.T. 0.000 min
 Lab File: VX030858.D
 Acq: 27 Aug 2022 09:23

Instrument : MSVOA_X
 ClientSampleId : RE123D2-20220819

Tgt Ion:113 Resp: 119883

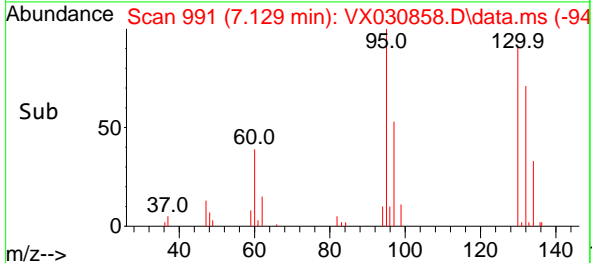
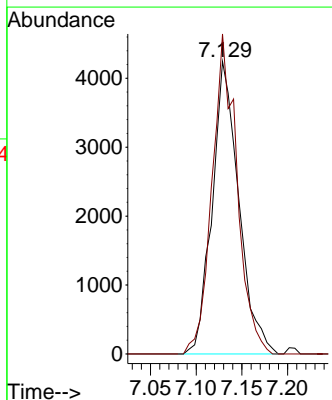
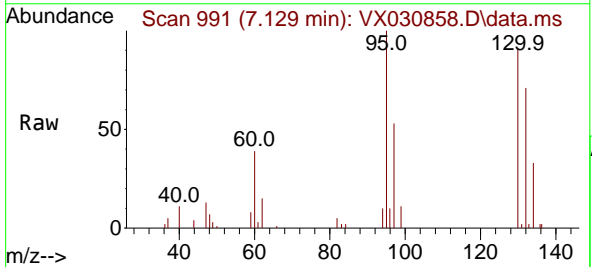
Ion	Ratio	Lower	Upper
113	100		
111	101.6	83.2	124.8
192	18.2	14.8	22.2

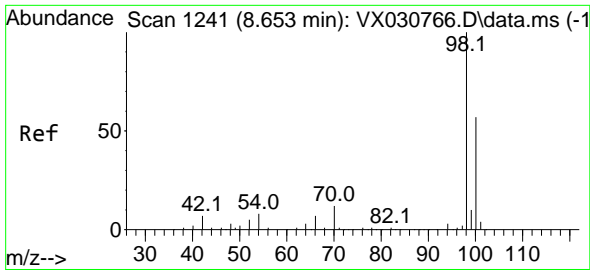


#44
 Trichloroethene
 Concen: 3.134 ug/l
 RT: 7.129 min Scan# 991
 Delta R.T. -0.000 min
 Lab File: VX030858.D
 Acq: 27 Aug 2022 09:23

Tgt Ion:130 Resp: 8615

Ion	Ratio	Lower	Upper
130	100		
95	109.4	0.0	194.8

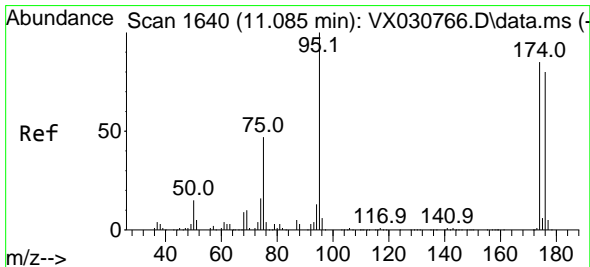
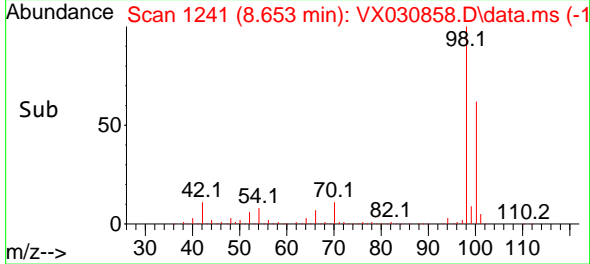
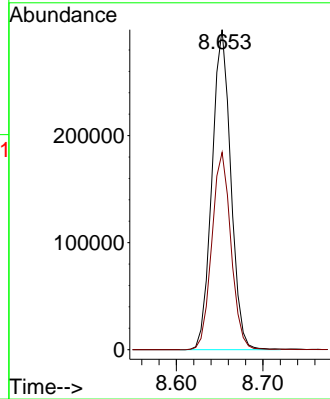
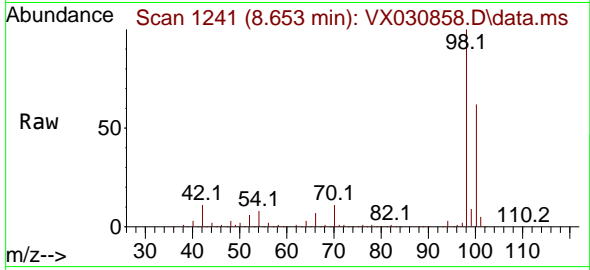




#50
 Toluene-d8
 Concen: 55.444 ug/l
 RT: 8.653 min Scan# 11
 Delta R.T. -0.000 min
 Lab File: VX030858.D
 Acq: 27 Aug 2022 09:23

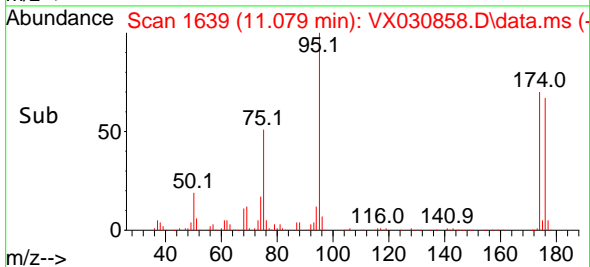
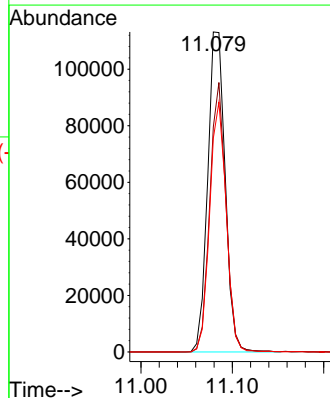
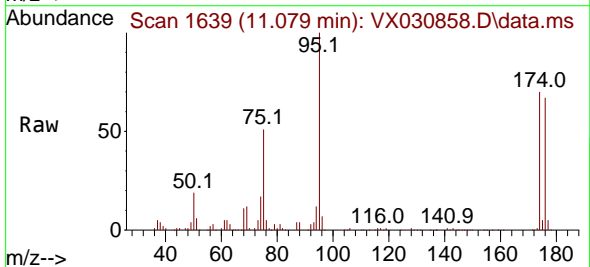
Instrument :
 MSVOA_X
 ClientSampleId :
 RE123D2-20220819

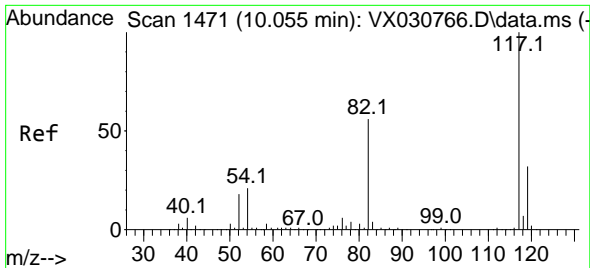
Tgt Ion: 98 Resp: 451253
 Ion Ratio Lower Upper
 98 100
 100 62.6 52.3 78.5



#62
 4-Bromofluorobenzene
 Concen: 49.510 ug/l
 RT: 11.079 min Scan# 1639
 Delta R.T. -0.006 min
 Lab File: VX030858.D
 Acq: 27 Aug 2022 09:23

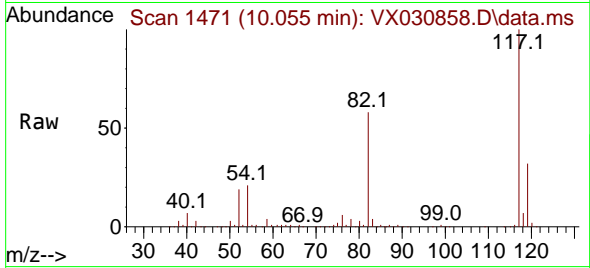
Tgt Ion: 95 Resp: 150019
 Ion Ratio Lower Upper
 95 100
 174 78.1 0.0 149.0
 176 74.1 0.0 146.0





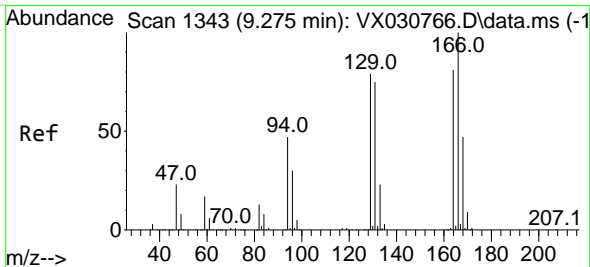
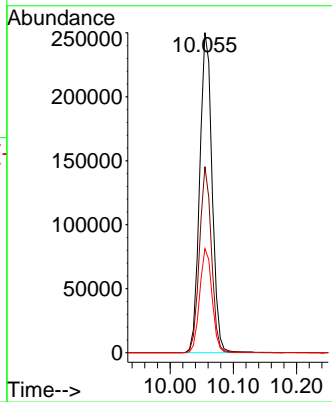
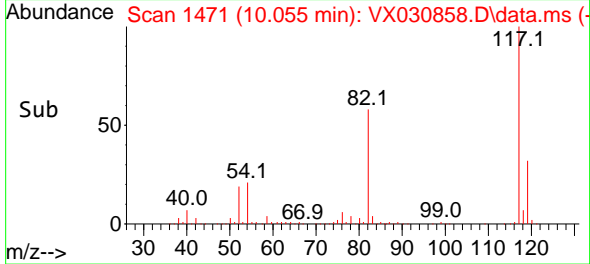
#63
 Chlorobenzene-d5
 Concen: 50.000 ug/l
 RT: 10.055 min Scan# 1471
 Delta R.T. 0.000 min
 Lab File: VX030858.D
 Acq: 27 Aug 2022 09:23

Instrument : MSVOA_X
 ClientSampleId : RE123D2-20220819

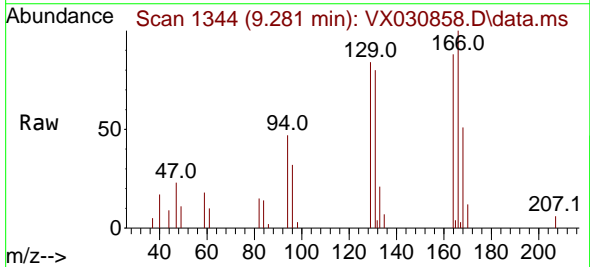


Tgt Ion:117 Resp: 341235

Ion	Ratio	Lower	Upper
117	100		
82	58.1	42.7	64.1
119	32.5	25.4	38.2

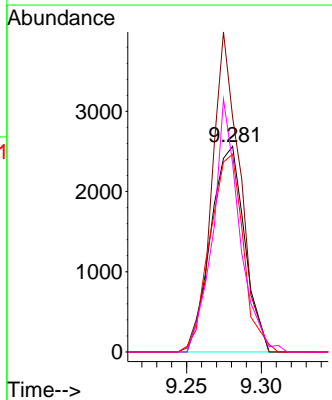
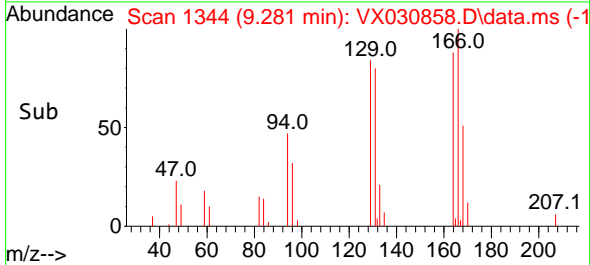


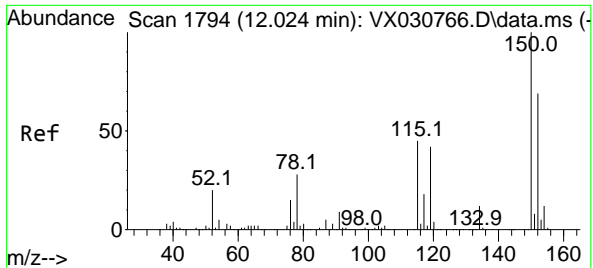
#64
 Tetrachloroethene
 Concen: 1.499 ug/l
 RT: 9.281 min Scan# 1344
 Delta R.T. 0.006 min
 Lab File: VX030858.D
 Acq: 27 Aug 2022 09:23



Tgt Ion:164 Resp: 4028

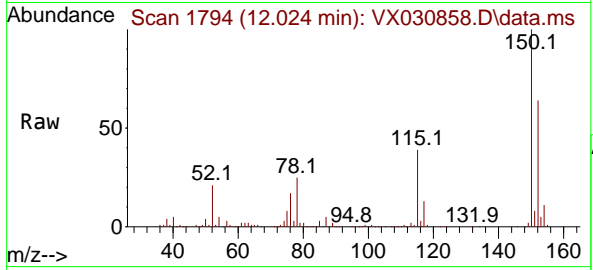
Ion	Ratio	Lower	Upper
164	100		
166	114.2	98.2	147.4
129	96.2	80.8	121.2
131	91.9	75.5	113.3





#72
 1,4-Dichlorobenzene-d4
 Concen: 50.000 ug/l
 RT: 12.024 min Scan# 11
 Delta R.T. 0.000 min
 Lab File: VX030858.D
 Acq: 27 Aug 2022 09:23

Instrument :
 MSVOA_X
 ClientSampleId :
 RE123D2-20220819



Tgt Ion:152 Resp: 147732

Ion	Ratio	Lower	Upper
152	100		
115	60.3	40.5	121.5
150	155.0	0.0	347.0

