

Data Path : Z:\voasrv\HPCHEM1\MSVOA\_X\Data\VX030623\  
 Data File : VX034343.D  
 Acq On : 06 Mar 2023 12:36  
 Operator : JC/MD  
 Sample : 01758-01DL 10X  
 Misc : 1.09g/10mL/100uL/5.00mL/MSVOA\_X/MEOH  
 ALS Vial : 9 Sample Multiplier: 1

Instrument :  
 MSVOA\_X  
 ClientSampleId :  
 FMC-0081DL

Quant Time: Mar 07 00:36:15 2023  
 Quant Method : Z:\voasrv\HPCHEM1\MSVOA\_X\Method\82X021723W.M  
 Quant Title : SW846 8260  
 QLast Update : Fri Feb 17 12:33:35 2023  
 Response via : Initial Calibration

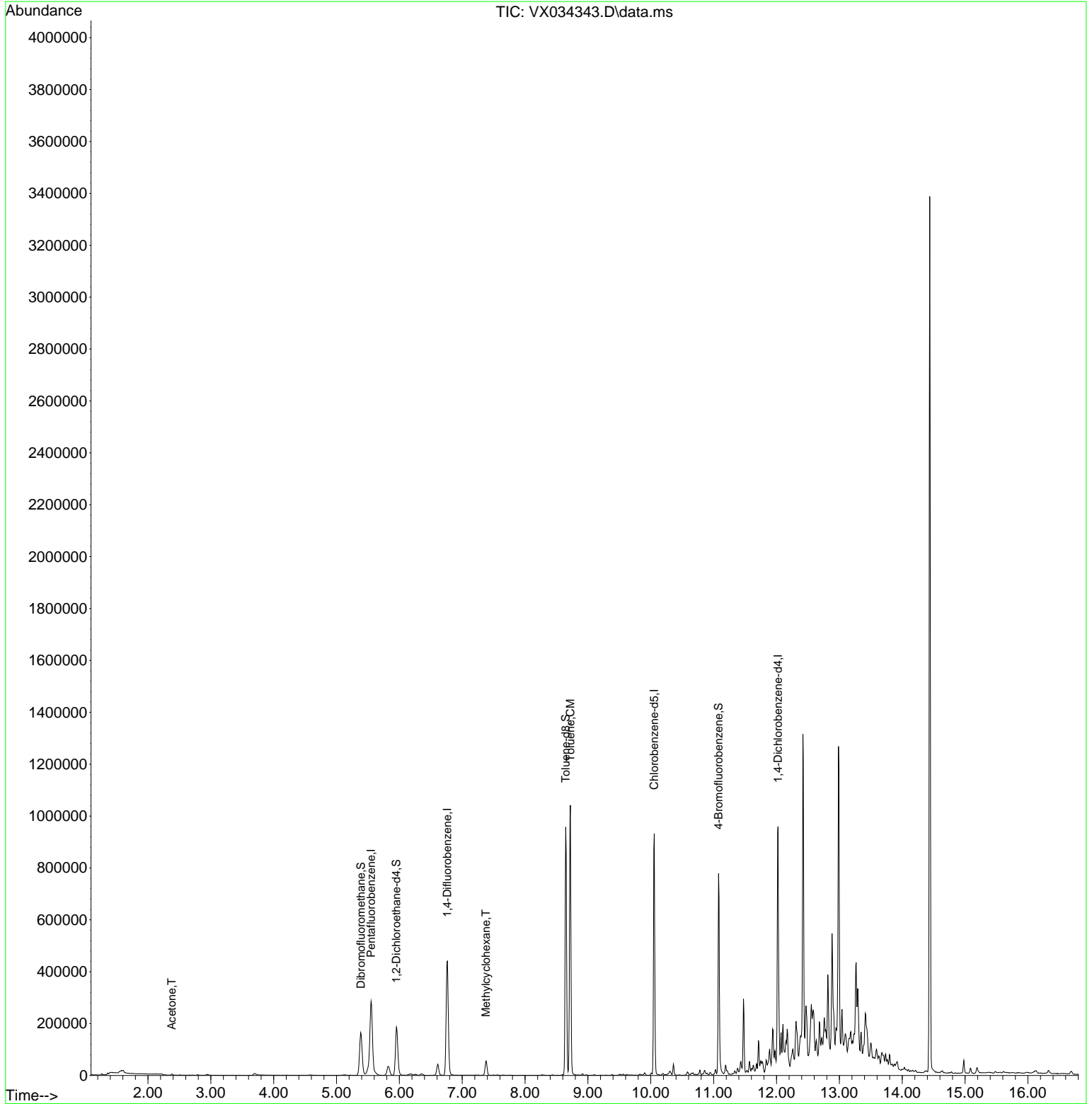
Compound	R.T.	QIon	Response	Conc	Units	Dev(Min)
-----						
Internal Standards						
1) Pentafluorobenzene	5.550	168	279315	50.000	ug/l	0.00
34) 1,4-Difluorobenzene	6.763	114	468782	50.000	ug/l	0.00
63) Chlorobenzene-d5	10.055	117	420155	50.000	ug/l	0.00
72) 1,4-Dichlorobenzene-d4	12.024	152	195744	50.000	ug/l	0.00
System Monitoring Compounds						
33) 1,2-Dichloroethane-d4	5.952	65	168540	44.804	ug/l	0.00
Spiked Amount	50.000	Range	78 - 117	Recovery	=	89.600%
35) Dibromofluoromethane	5.385	113	145073	47.530	ug/l	0.00
Spiked Amount	50.000	Range	75 - 124	Recovery	=	95.060%
50) Toluene-d8	8.647	98	565871	51.637	ug/l	0.00
Spiked Amount	50.000	Range	92 - 112	Recovery	=	103.280%
62) 4-Bromofluorobenzene	11.079	95	198543	47.366	ug/l	0.00
Spiked Amount	50.000	Range	83 - 123	Recovery	=	94.740%
Target Compounds						
					Qvalue	
16) Acetone	2.380	43	5464	2.816	ug/l	99
39) Methylcyclohexane	7.379	83	24352	4.192	ug/l	96
52) Toluene	8.720	92	386460	47.679	ug/l	99
-----						

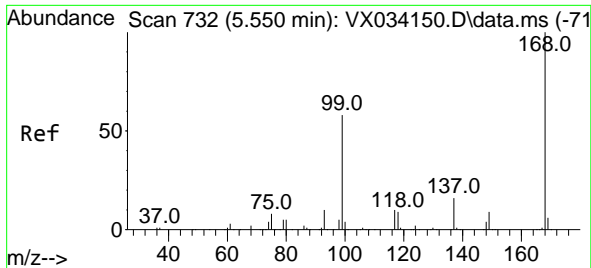
(#) = qualifier out of range (m) = manual integration (+) = signals summed

Data Path : Z:\voasrv\HPCHEM1\MSVOA\_X\Data\VX030623\  
 Data File : VX034343.D  
 Acq On : 06 Mar 2023 12:36  
 Operator : JC/MD  
 Sample : 01758-01DL 10X  
 Misc : 1.09g/10mL/100uL/5.00mL/MSVOA\_X/MEOH  
 ALS Vial : 9 Sample Multiplier: 1

Instrument :  
 MSVOA\_X  
 ClientSampleId :  
 FMC-0081DL

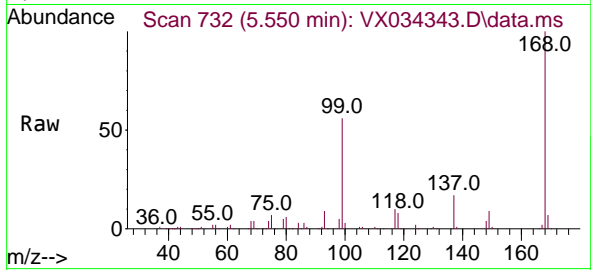
Quant Time: Mar 07 00:36:15 2023  
 Quant Method : Z:\voasrv\HPCHEM1\MSVOA\_X\Method\82X021723W.M  
 Quant Title : SW846 8260  
 QLast Update : Fri Feb 17 12:33:35 2023  
 Response via : Initial Calibration



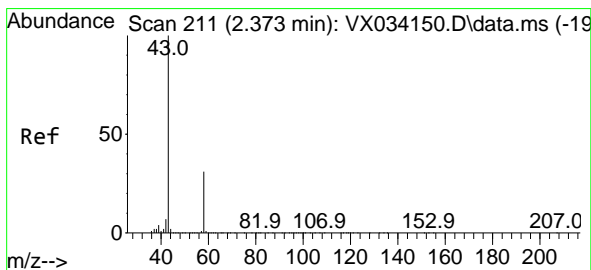
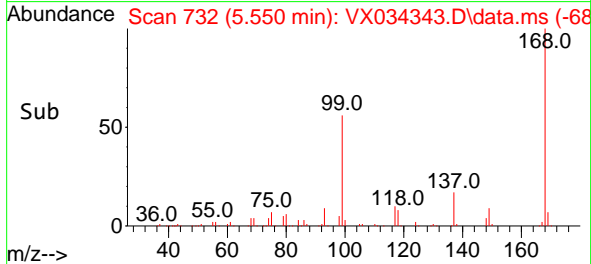
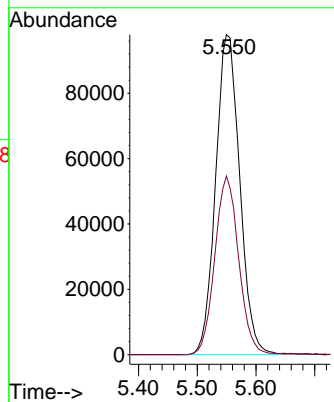


#1  
 Pentafluorobenzene  
 Concen: 50.000 ug/l  
 RT: 5.550 min Scan# 71  
 Delta R.T. -0.000 min  
 Lab File: VX034343.D  
 Acq: 06 Mar 2023 12:36

Instrument :  
 MSVOA\_X  
 ClientSampleId :  
 FMC-0081DL

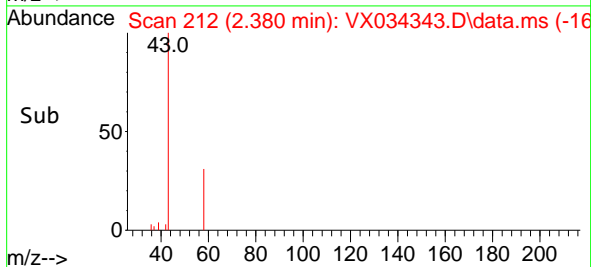
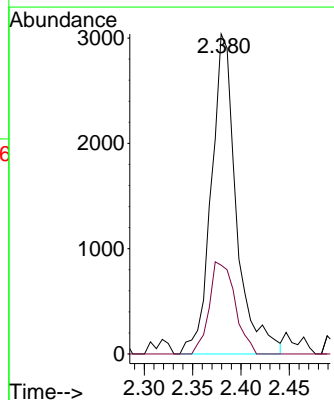
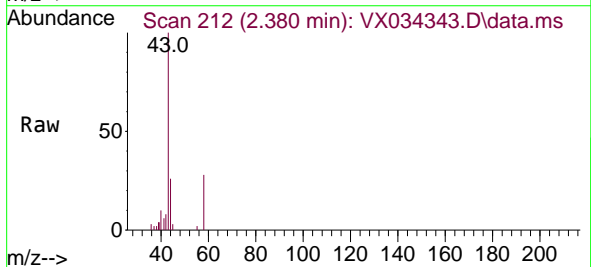


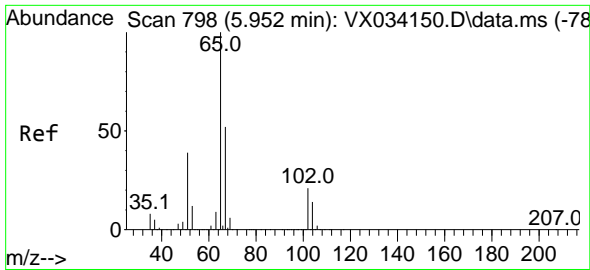
Tgt Ion:168 Resp: 279315  
 Ion Ratio Lower Upper  
 168 100  
 99 55.8 39.6 59.4



#16  
 Acetone  
 Concen: 2.816 ug/l  
 RT: 2.380 min Scan# 212  
 Delta R.T. 0.006 min  
 Lab File: VX034343.D  
 Acq: 06 Mar 2023 12:36

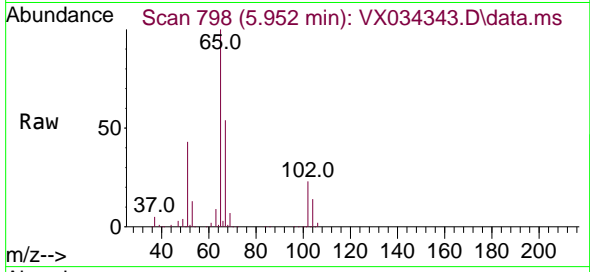
Tgt Ion: 43 Resp: 5464  
 Ion Ratio Lower Upper  
 43 100  
 58 27.7 22.6 33.8



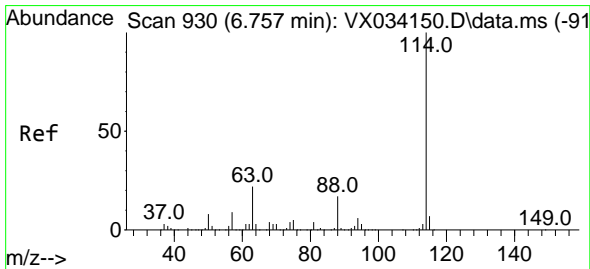
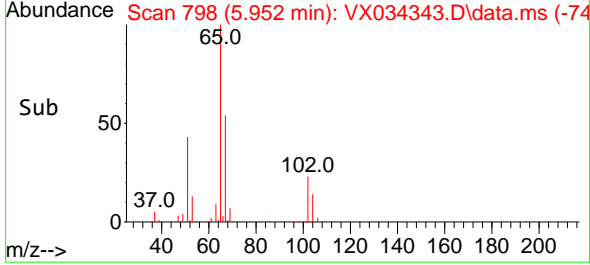
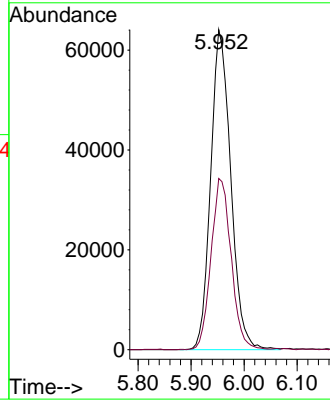


#33  
 1,2-Dichloroethane-d4  
 Concen: 44.804 ug/l  
 RT: 5.952 min Scan# 798  
 Delta R.T. 0.000 min  
 Lab File: VX034343.D  
 Acq: 06 Mar 2023 12:36

Instrument :  
 MSVOA\_X  
 ClientSampleId :  
 FMC-0081DL

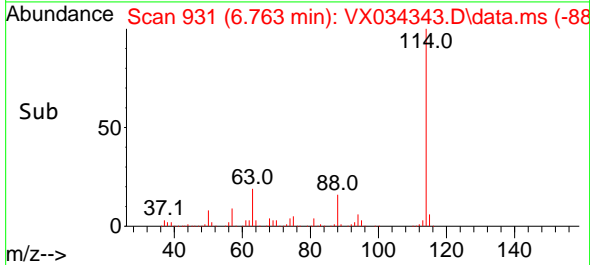
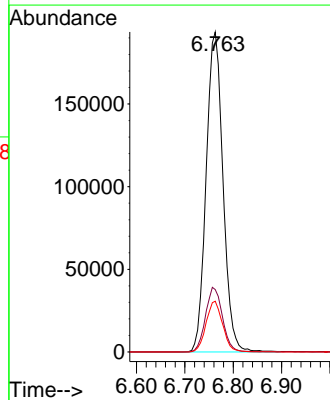
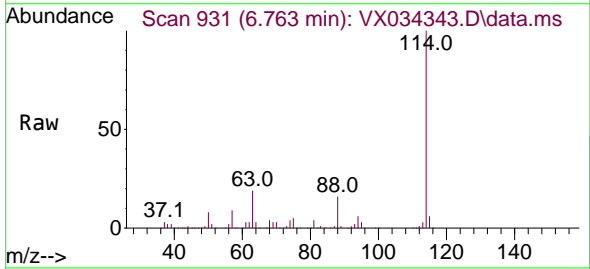


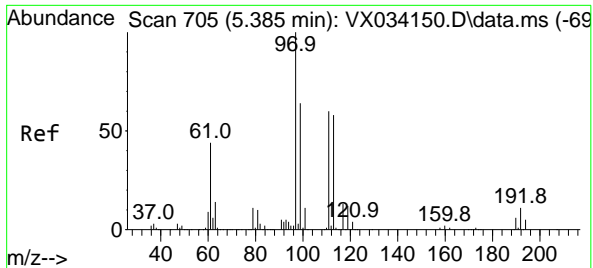
Tgt Ion: 65 Resp: 168540  
 Ion Ratio Lower Upper  
 65 100  
 67 53.6 0.0 104.8



#34  
 1,4-Difluorobenzene  
 Concen: 50.000 ug/l  
 RT: 6.763 min Scan# 931  
 Delta R.T. 0.006 min  
 Lab File: VX034343.D  
 Acq: 06 Mar 2023 12:36

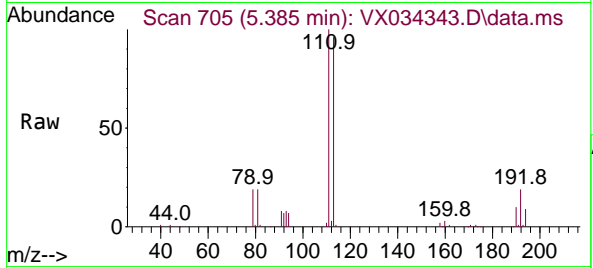
Tgt Ion: 114 Resp: 468782  
 Ion Ratio Lower Upper  
 114 100  
 63 19.5 0.0 37.4  
 88 15.9 0.0 30.6



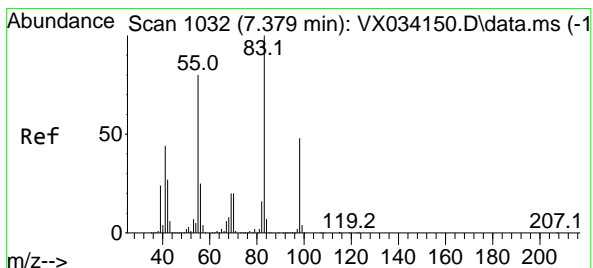
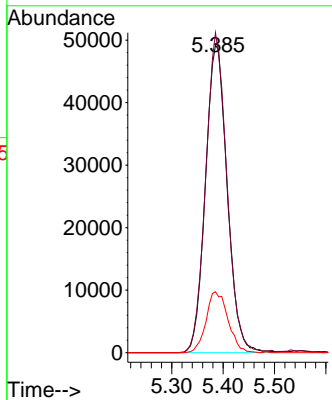
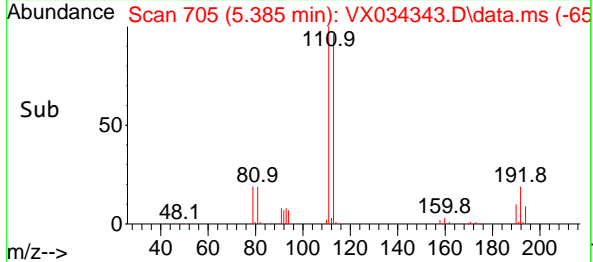


#35  
 Dibromofluoromethane  
 Concen: 47.530 ug/l  
 RT: 5.385 min Scan# 705  
 Delta R.T. 0.000 min  
 Lab File: VX034343.D  
 Acq: 06 Mar 2023 12:36

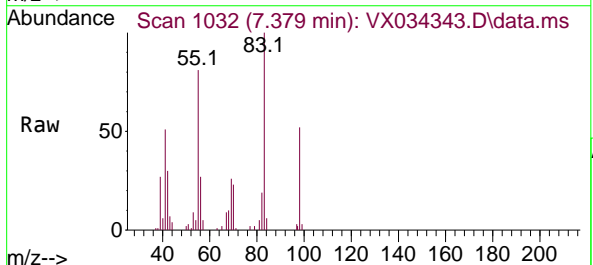
Instrument : MSVOA\_X  
 ClientSampleId : FMC-0081DL



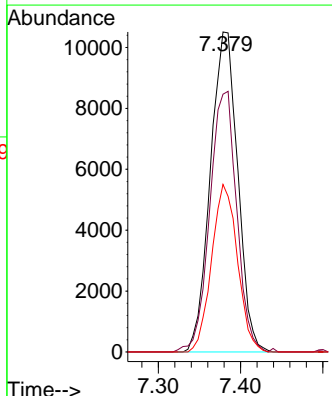
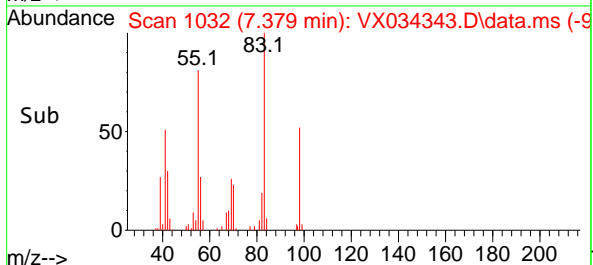
Tgt Ion:113 Resp: 145073  
 Ion Ratio Lower Upper  
 113 100  
 111 101.0 83.0 124.6  
 192 19.8 19.0 28.4

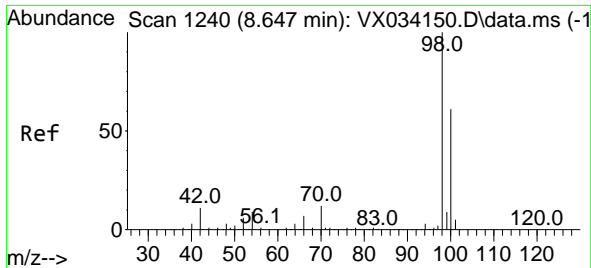


#39  
 Methylcyclohexane  
 Concen: 4.192 ug/l  
 RT: 7.379 min Scan# 1032  
 Delta R.T. 0.000 min  
 Lab File: VX034343.D  
 Acq: 06 Mar 2023 12:36



Tgt Ion: 83 Resp: 24352  
 Ion Ratio Lower Upper  
 83 100  
 55 80.5 61.8 92.6  
 98 52.3 39.3 58.9

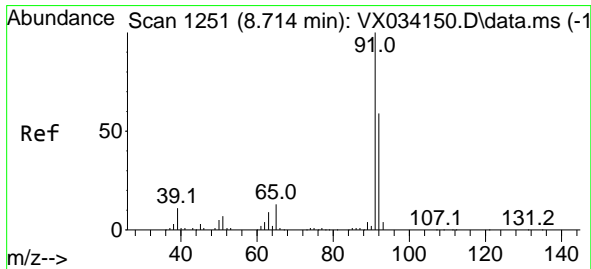
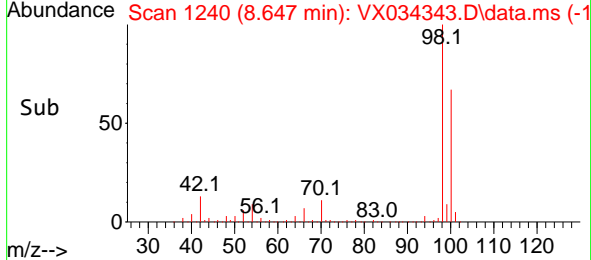
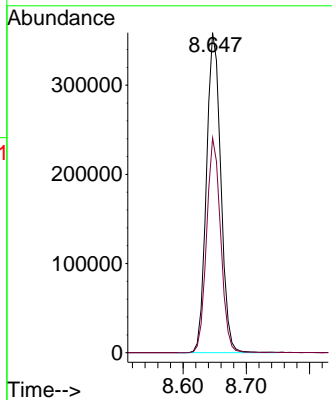
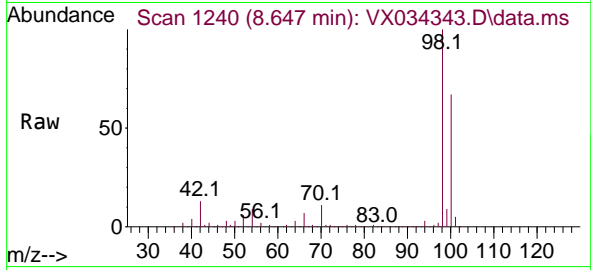




#50  
 Toluene-d8  
 Concen: 51.637 ug/l  
 RT: 8.647 min Scan# 11  
 Delta R.T. 0.000 min  
 Lab File: VX034343.D  
 Acq: 06 Mar 2023 12:36

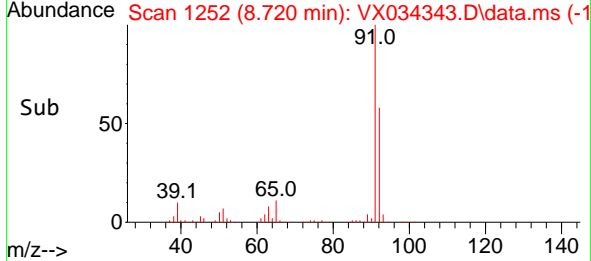
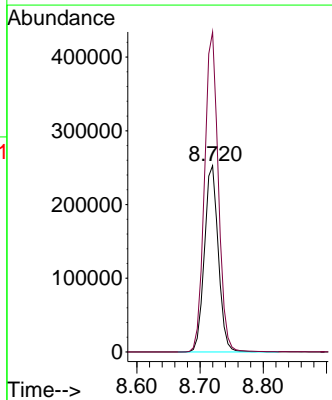
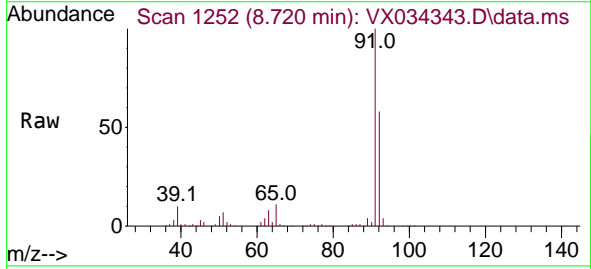
Instrument : MSVOA\_X  
 ClientSampleId : FMC-0081DL

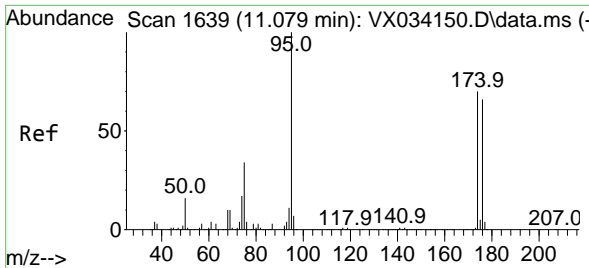
Tgt Ion: 98 Resp: 565871  
 Ion Ratio Lower Upper  
 98 100  
 100 65.7 53.6 80.4



#52  
 Toluene  
 Concen: 47.679 ug/l  
 RT: 8.720 min Scan# 1252  
 Delta R.T. 0.006 min  
 Lab File: VX034343.D  
 Acq: 06 Mar 2023 12:36

Tgt Ion: 92 Resp: 386460  
 Ion Ratio Lower Upper  
 92 100  
 91 170.6 135.5 203.3



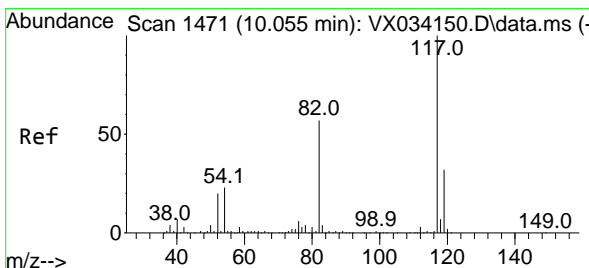
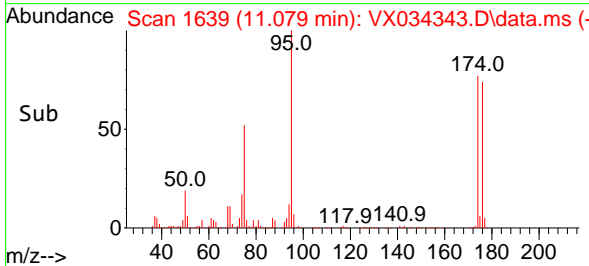
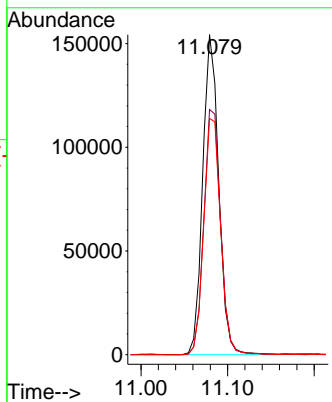
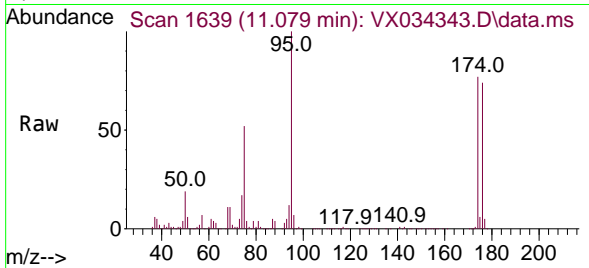


#62  
 4-Bromofluorobenzene  
 Concen: 47.366 ug/l  
 RT: 11.079 min Scan# 1639  
 Delta R.T. 0.000 min  
 Lab File: VX034343.D  
 Acq: 06 Mar 2023 12:36

Instrument : MSVOA\_X  
 ClientSampleId : FMC-0081DL

Tgt Ion: 95 Resp: 198543

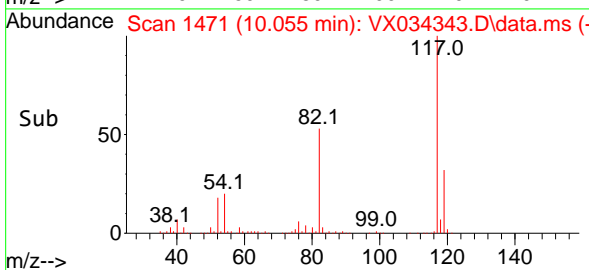
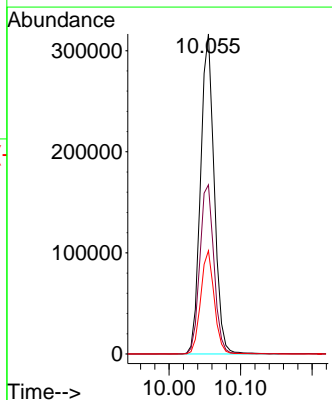
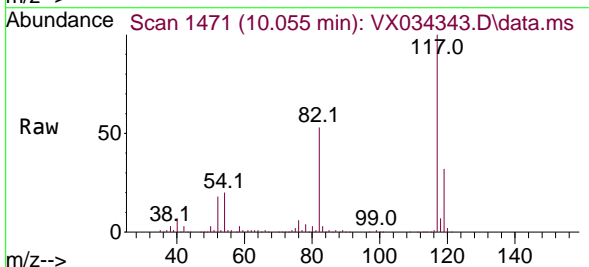
Ion	Ratio	Lower	Upper
95	100		
174	80.2	0.0	184.4
176	77.8	0.0	178.8

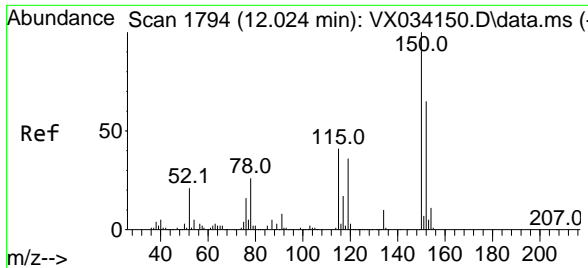


#63  
 Chlorobenzene-d5  
 Concen: 50.000 ug/l  
 RT: 10.055 min Scan# 1471  
 Delta R.T. 0.000 min  
 Lab File: VX034343.D  
 Acq: 06 Mar 2023 12:36

Tgt Ion: 117 Resp: 420155

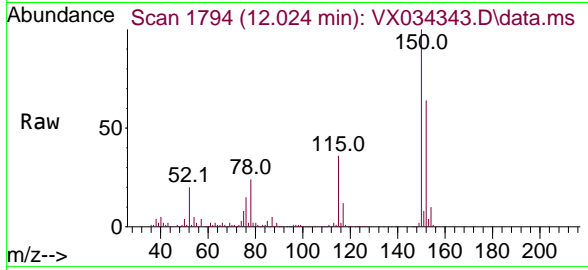
Ion	Ratio	Lower	Upper
117	100		
82	52.8	40.6	60.8
119	32.3	25.6	38.4





#72  
 1,4-Dichlorobenzene-d4  
 Concen: 50.000 ug/l  
 RT: 12.024 min Scan# 11  
 Delta R.T. 0.000 min  
 Lab File: VX034343.D  
 Acq: 06 Mar 2023 12:36

Instrument :  
 MSVOA\_X  
 ClientSampleId :  
 FMC-0081DL



Tgt Ion:152 Resp: 195744

Ion	Ratio	Lower	Upper
152	100		
115	59.3	38.7	116.1
150	155.8	0.0	348.2

