

Data Path : Z:\voasrv\HPCHEM1\MSVOA_X\Data\VX061822\
 Data File : VX029573.D
 Acq On : 18 Jun 2022 16:36
 Operator : JC/MD
 Sample : N3325-06
 Misc : 5.0mL/MSVOA_X/WATER
 ALS Vial : 21 Sample Multiplier: 1

Instrument :
 MSVOA_X
 ClientSampleId :
 MW-17

Quant Time: Jun 20 01:34:47 2022
 Quant Method : Z:\voasrv\HPCHEM1\MSVOA_X\Method\82X061822W.M
 Quant Title : SW846 8260
 QLast Update : Mon Jun 20 01:31:01 2022
 Response via : Initial Calibration

Manual Integrations
 APPROVED

Reviewed By :Semsettin Yesilyurt 06/23/2022
 Supervised By :Mahesh Dadoda 06/23/2022

Compound	R.T.	QIon	Response	Conc	Units	Dev(Min)
Internal Standards						
1) Pentafluorobenzene	5.556	168	272839	50.000	ug/l	0.00
34) 1,4-Difluorobenzene	6.769	114	448460	50.000	ug/l	0.00
63) Chlorobenzene-d5	10.055	117	391414	50.000	ug/l	0.00
72) 1,4-Dichlorobenzene-d4	12.024	152	178333	50.000	ug/l	0.00
System Monitoring Compounds						
33) 1,2-Dichloroethane-d4	5.964	65	153927	42.620	ug/l	0.00
Spiked Amount	50.000	Range	74 - 125	Recovery	=	85.240%
35) Dibromofluoromethane	5.391	113	134100	45.885	ug/l	0.00
Spiked Amount	50.000	Range	75 - 124	Recovery	=	91.760%
50) Toluene-d8	8.653	98	511706	47.928	ug/l	0.00
Spiked Amount	50.000	Range	86 - 113	Recovery	=	95.860%
62) 4-Bromofluorobenzene	11.085	95	190060	47.205	ug/l	0.00
Spiked Amount	50.000	Range	83 - 123	Recovery	=	94.400%
Target Compounds						
						Qvalue
16) Acetone	2.386	43	7126	4.950	ug/l	93
17) Carbon Disulfide	2.538	76	29361	4.097	ug/l	99
19) Methyl tert-butyl Ether	3.111	73	16648	1.735	ug/l #	1
31) Cyclohexane	5.477	56	39535	8.154	ug/l	93
39) Methylcyclohexane	7.385	83	47196	9.570	ug/l	96
40) Benzene	6.043	78	327870	27.963	ug/l	98
52) Toluene	8.720	92	49004	6.527	ug/l	97
64) Tetrachloroethene	9.275	164	713	0.252	ug/l #	93
67) Ethyl Benzene	10.195	91	551577	39.923	ug/l	100
68) m/p-Xylenes	10.305	106	141553	26.272	ug/l	96
69) o-Xylene	10.646	106	322823	60.644	ug/l	98
73) Isopropylbenzene	10.963	105	86582	6.475	ug/l	98
78) n-propylbenzene	11.305	91	233703	15.519	ug/l	100
80) 1,3,5-Trimethylbenzene	11.451	105	45624	4.052	ug/l	100
84) 1,2,4-Trimethylbenzene	11.756	105	1447405	128.877	ug/l	100
85) sec-Butylbenzene	11.896	105	19749m	1.451	ug/l	
86) p-Isopropyltoluene	12.012	119	7034m	0.617	ug/l	
89) n-Butylbenzene	12.335	91	28959	3.012	ug/l #	68
95) Naphthalene	13.780	128	444364	35.523	ug/l	100

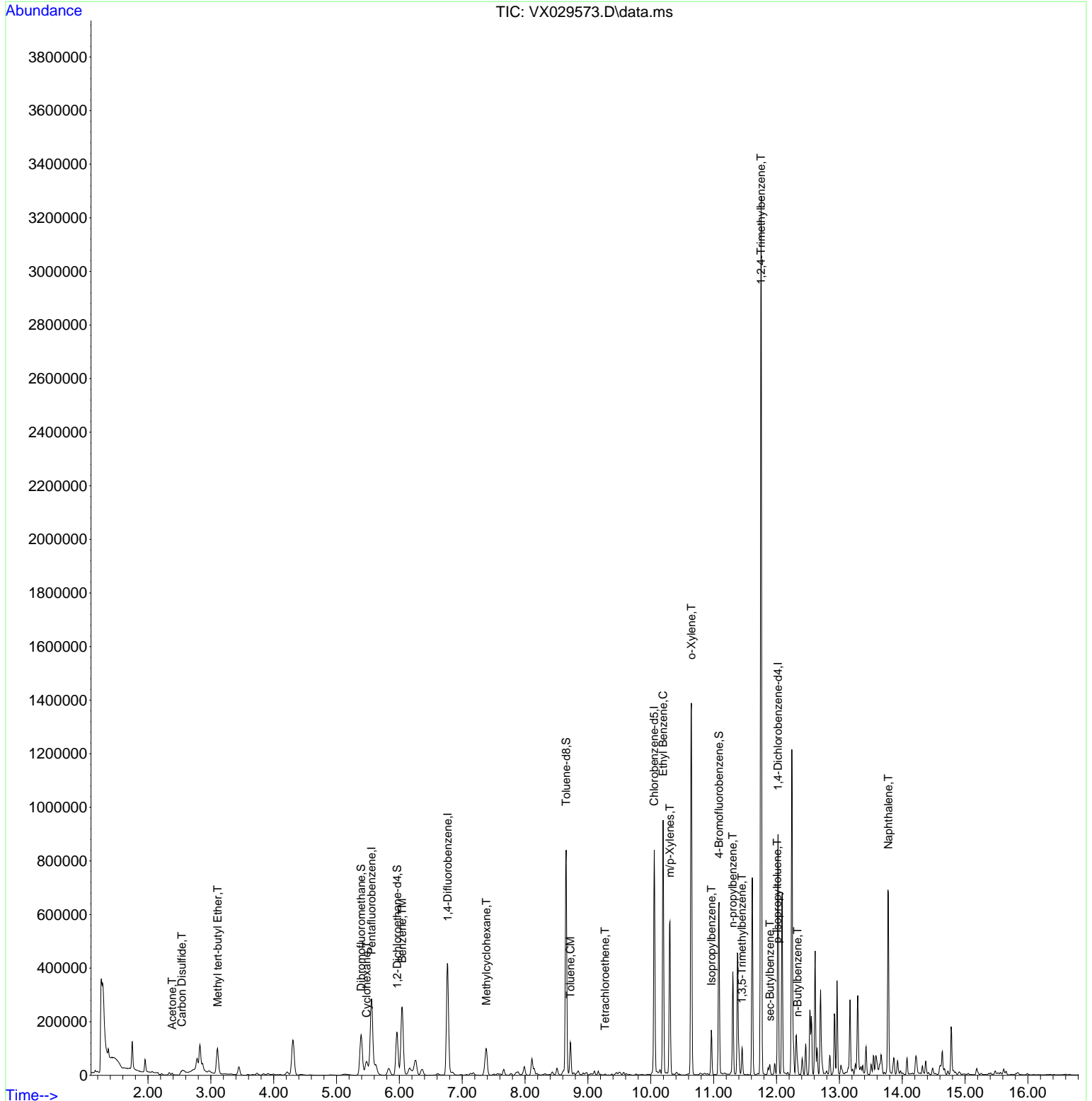
(#) = qualifier out of range (m) = manual integration (+) = signals summed

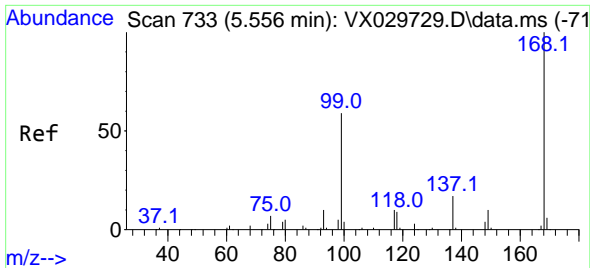
Data Path : Z:\voasrv\HPCHEM1\MSVOA_X\Data\VX061822\
 Data File : VX029573.D
 Acq On : 18 Jun 2022 16:36
 Operator : JC/MD
 Sample : N3325-06
 Misc : 5.0mL/MSVOA_X/WATER
 ALS Vial : 21 Sample Multiplier: 1

Instrument :
 MSVOA_X
ClientSampleId :
 MW-17

Quant Time: Jun 20 01:34:47 2022
 Quant Method : Z:\voasrv\HPCHEM1\MSVOA_X\Method\82X061822W.M
 Quant Title : SW846 8260
 QLast Update : Mon Jun 20 01:31:01 2022
 Response via : Initial Calibration

Manual Integrations
APPROVED
 Reviewed By :Semsettin Yesilyurt 06/23/2022
 Supervised By :Mahesh Dadoda 06/23/2022





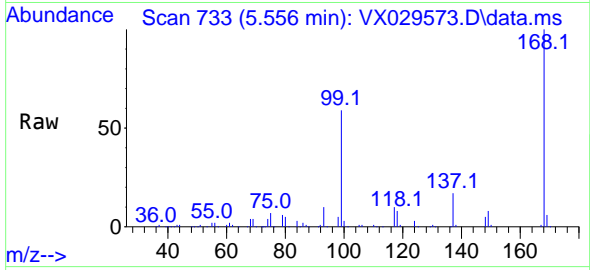
#1
 Pentafluorobenzene
 Concen: 50.000 ug/l
 RT: 5.556 min Scan# 71
 Delta R.T. -0.000 min
 Lab File: VX029573.D
 Acq: 18 Jun 2022 16:36

Instrument :

MSVOA_X

ClientSampleId :

MW-17

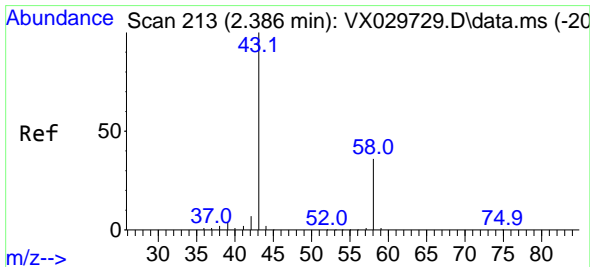
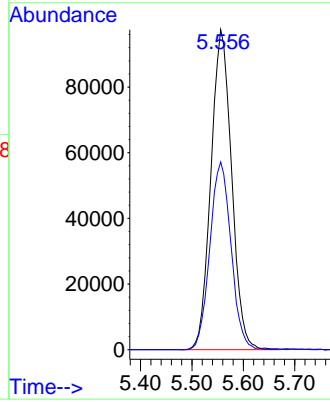
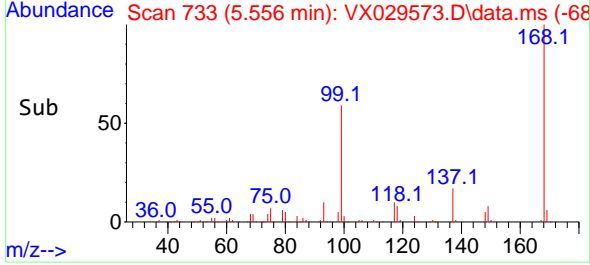


Tgt Ion:168 Resp: 272839
 Ion Ratio Lower Upper
 168 100
 99 58.6 41.7 62.5

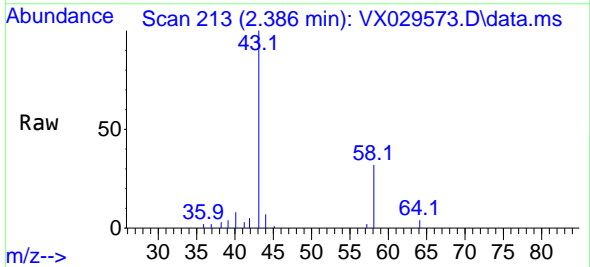
Manual Integrations

APPROVED

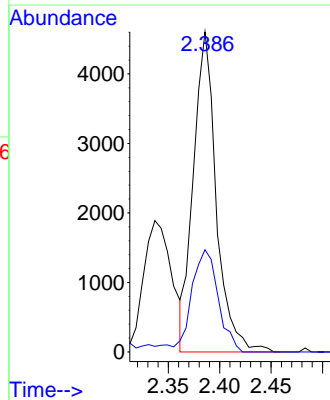
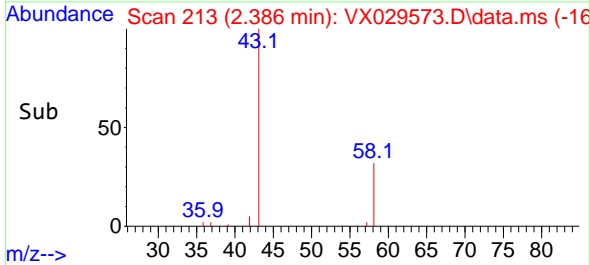
Reviewed By :Semsettin Yesilyurt 06/23/2022
 Supervised By :Mahesh Dadoda 06/23/2022

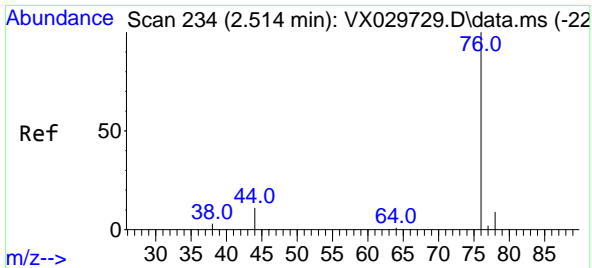


#16
 Acetone
 Concen: 4.950 ug/l
 RT: 2.386 min Scan# 213
 Delta R.T. -0.000 min
 Lab File: VX029573.D
 Acq: 18 Jun 2022 16:36



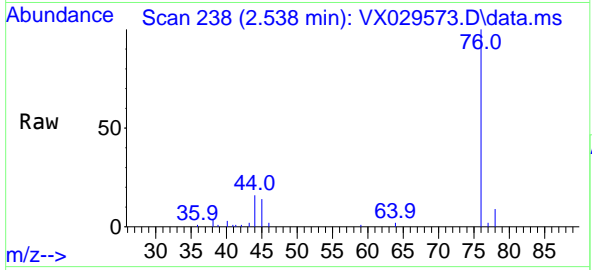
Tgt Ion: 43 Resp: 7126
 Ion Ratio Lower Upper
 43 100
 58 31.9 28.8 43.2





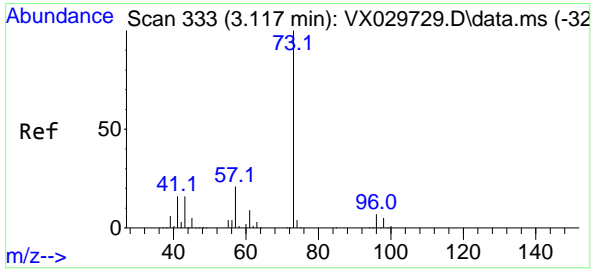
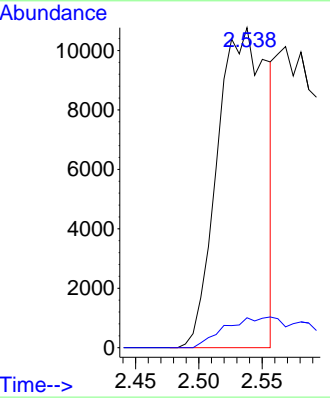
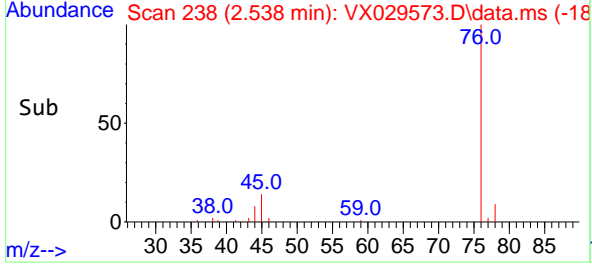
#17
 Carbon Disulfide
 Concen: 4.097 ug/l
 RT: 2.538 min Scan# 21
 Delta R.T. 0.024 min
 Lab File: VX029573.D
 Acq: 18 Jun 2022 16:36

Instrument : MSVOA_X
 ClientSampleId : MW-17

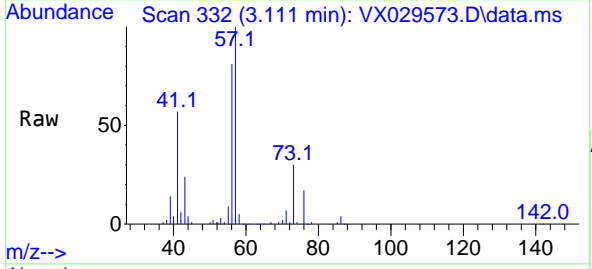


Tgt Ion: 76 Resp: 2936
 Ion Ratio Lower Upper
 76 100
 78 9.4 7.2 10.8

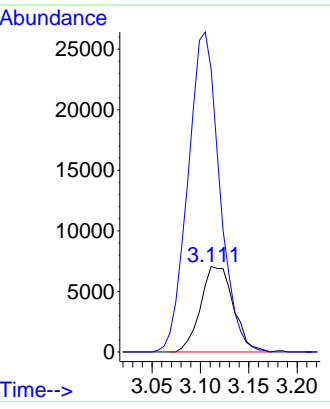
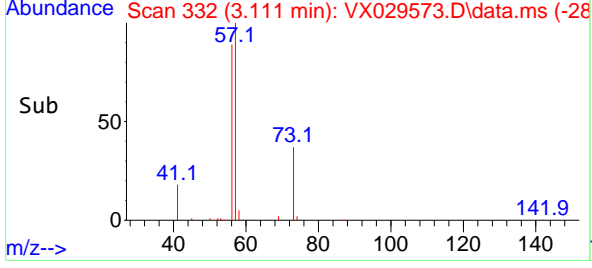
Manual Integrations
APPROVED
 Reviewed By :Semsettin Yesilyurt 06/23/2022
 Supervised By :Mahesh Dadoda 06/23/2022

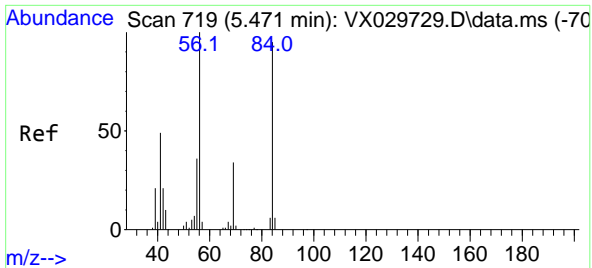


#19
 Methyl tert-butyl Ether
 Concen: 1.735 ug/l
 RT: 3.111 min Scan# 332
 Delta R.T. -0.006 min
 Lab File: VX029573.D
 Acq: 18 Jun 2022 16:36



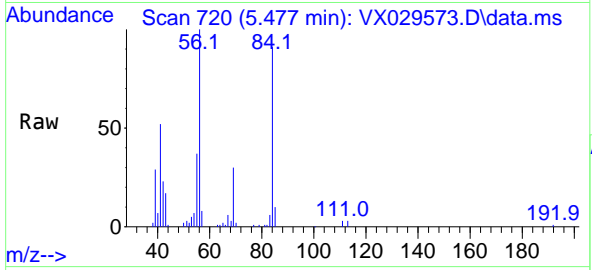
Tgt Ion: 73 Resp: 16648
 Ion Ratio Lower Upper
 73 100
 57 330.7 16.8 25.2#





#31
 Cyclohexane
 Concen: 8.154 ug/l
 RT: 5.477 min Scan# 719
 Delta R.T. -0.000 min
 Lab File: VX029573.D
 Acq: 18 Jun 2022 16:36

Instrument : MSVOA_X
 ClientSampleId : MW-17

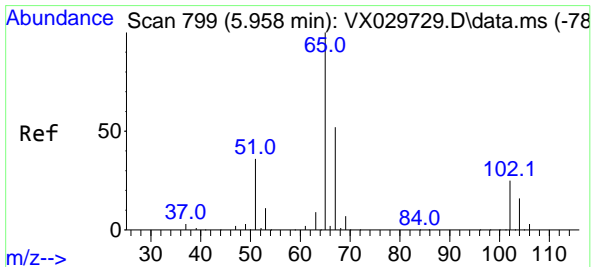
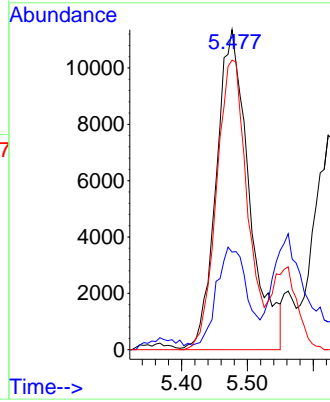
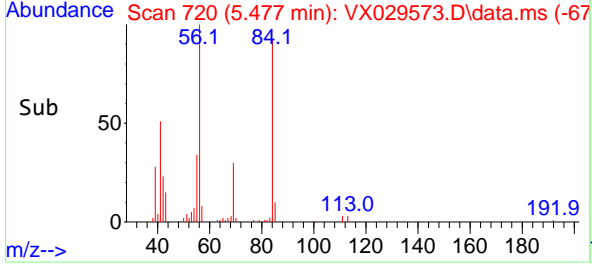


Tgt Ion: 56 Resp: 3953

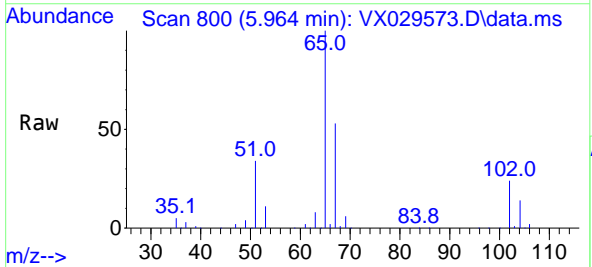
Ion	Ratio	Lower	Upper
56	100		
69	27.6	26.7	40.1
84	90.9	77.2	115.8

Manual Integrations
 APPROVED

Reviewed By :Semsettin Yesilyurt 06/23/2022
 Supervised By :Mahesh Dadoda 06/23/2022

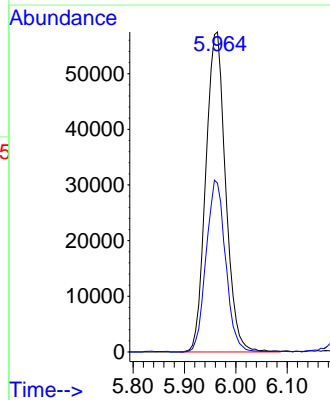
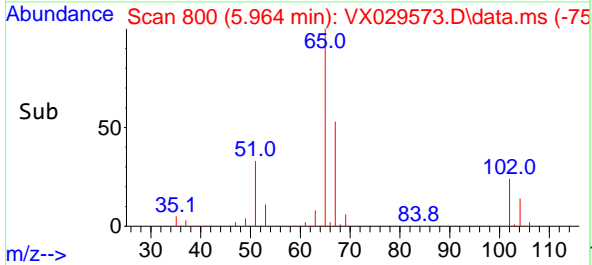


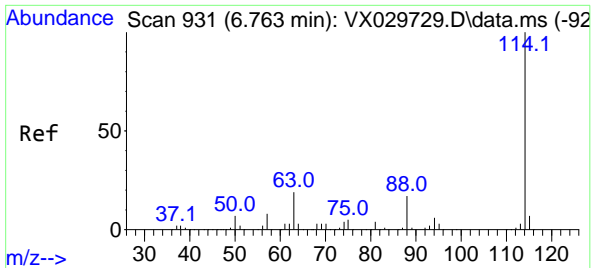
#33
 1,2-Dichloroethane-d4
 Concen: 42.620 ug/l
 RT: 5.964 min Scan# 800
 Delta R.T. 0.006 min
 Lab File: VX029573.D
 Acq: 18 Jun 2022 16:36



Tgt Ion: 65 Resp: 153927

Ion	Ratio	Lower	Upper
65	100		
67	52.7	0.0	107.4





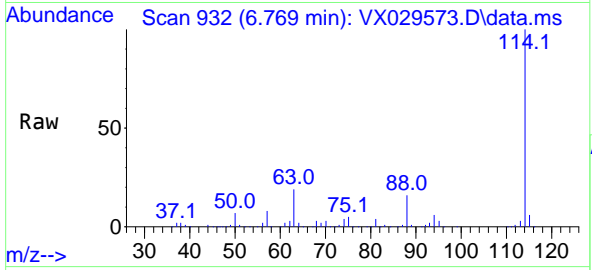
#34
 1,4-Difluorobenzene
 Concen: 50.000 ug/l
 RT: 6.769 min Scan# 911
 Delta R.T. 0.006 min
 Lab File: VX029573.D
 Acq: 18 Jun 2022 16:36

Instrument :

MSVOA_X

ClientSampleId :

MW-17

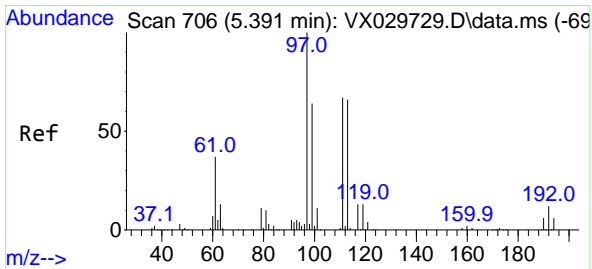
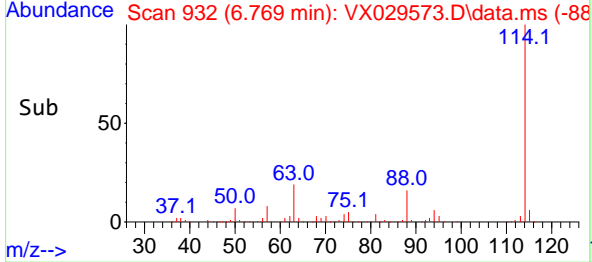
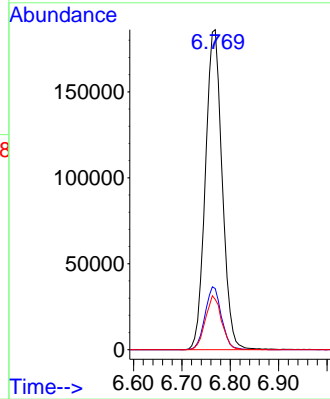


Tgt Ion:114 Resp: 448460
 Ion Ratio Lower Upper
 114 100
 63 19.1 0.0 36.8
 88 15.7 0.0 32.4

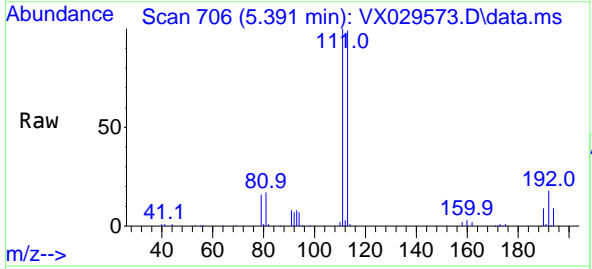
Manual Integrations

APPROVED

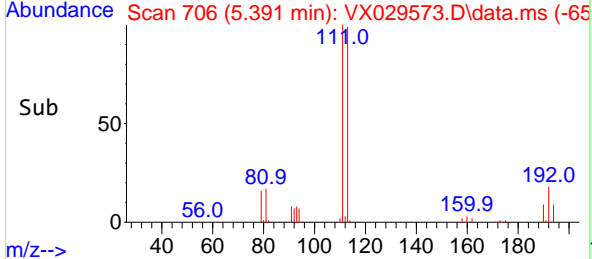
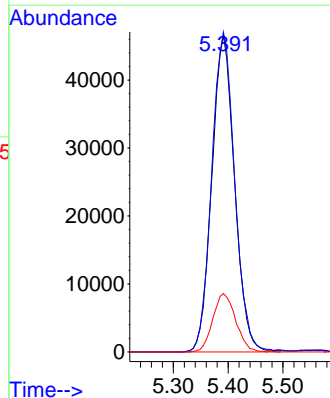
Reviewed By :Semsettin Yesilyurt 06/23/2022
 Supervised By :Mahesh Dadoda 06/23/2022

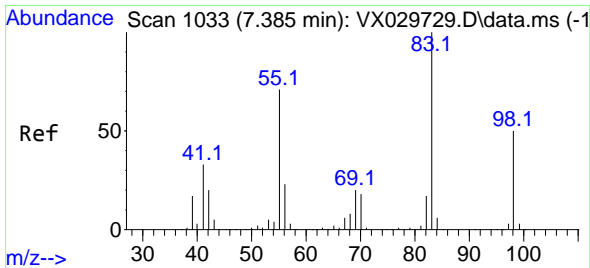


#35
 Dibromofluoromethane
 Concen: 45.885 ug/l
 RT: 5.391 min Scan# 706
 Delta R.T. 0.000 min
 Lab File: VX029573.D
 Acq: 18 Jun 2022 16:36



Tgt Ion:113 Resp: 134100
 Ion Ratio Lower Upper
 113 100
 111 102.3 82.8 124.2
 192 18.5 16.9 25.3





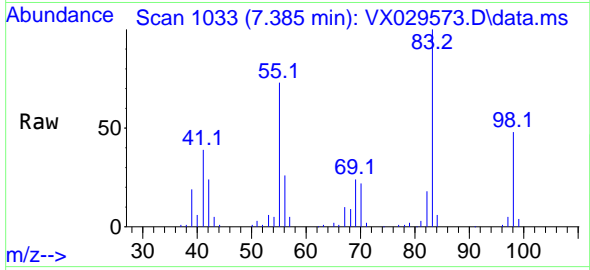
#39
 Methylcyclohexane
 Concen: 9.570 ug/l
 RT: 7.385 min Scan# 1033
 Delta R.T. -0.000 min
 Lab File: VX029573.D
 Acq: 18 Jun 2022 16:36

Instrument :

MSVOA_X

ClientSampleId :

MW-17

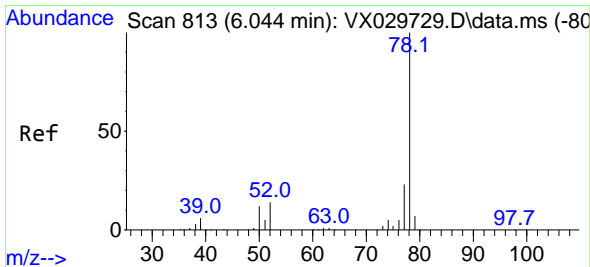
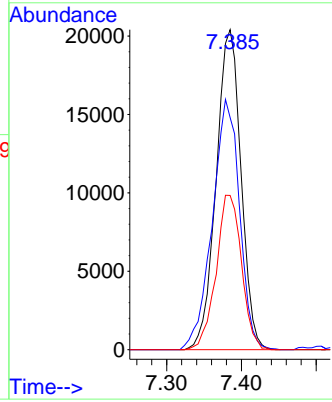
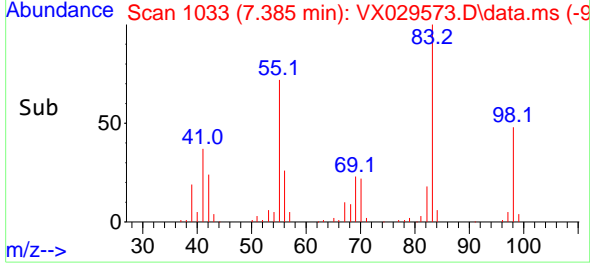


Tgt Ion: 83 Resp: 47190
 Ion Ratio Lower Upper
 83 100
 55 72.6 54.6 81.8
 98 48.2 37.4 56.2

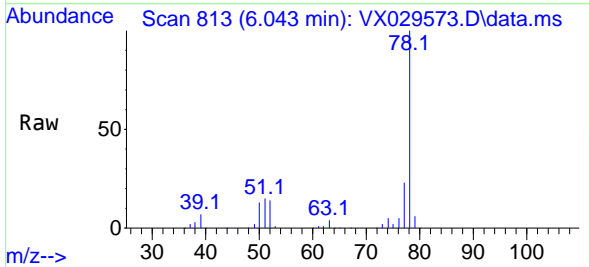
Manual Integrations

APPROVED

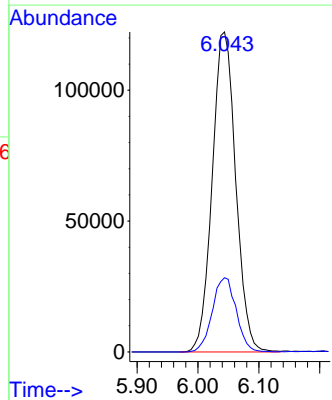
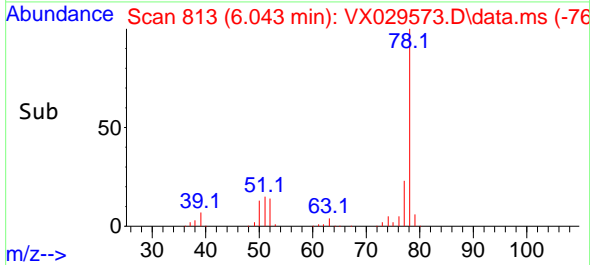
Reviewed By :Semsettin Yesilyurt 06/23/2022
 Supervised By :Mahesh Dadoda 06/23/2022

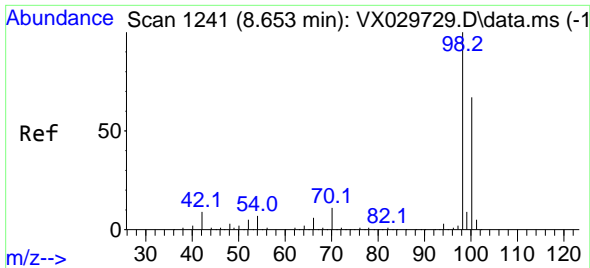


#40
 Benzene
 Concen: 27.963 ug/l
 RT: 6.043 min Scan# 813
 Delta R.T. -0.000 min
 Lab File: VX029573.D
 Acq: 18 Jun 2022 16:36



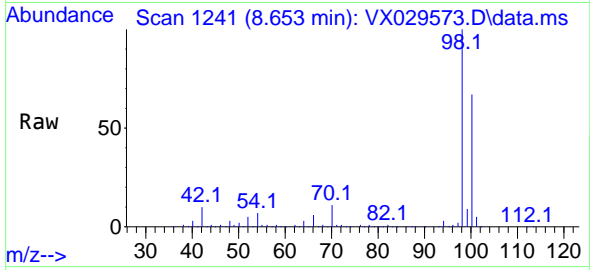
Tgt Ion: 78 Resp: 327870
 Ion Ratio Lower Upper
 78 100
 77 23.2 19.3 28.9





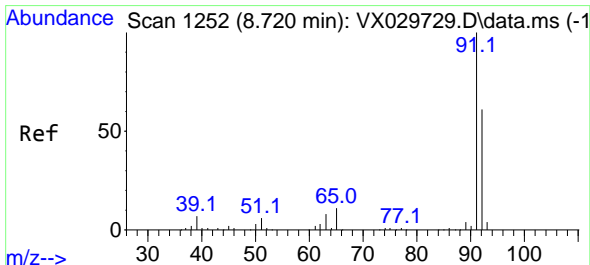
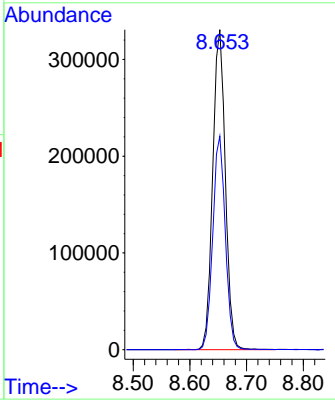
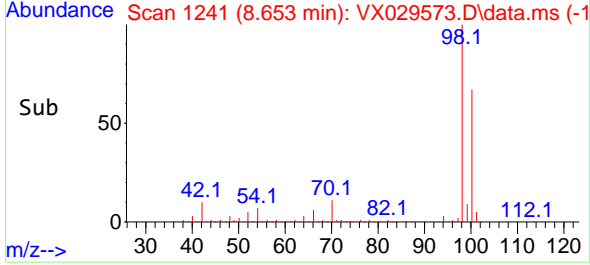
#50
 Toluene-d8
 Concen: 47.928 ug/l
 RT: 8.653 min Scan# 1241
 Delta R.T. -0.000 min
 Lab File: VX029573.D
 Acq: 18 Jun 2022 16:36

Instrument : MSVOA_X
 ClientSampleId : MW-17

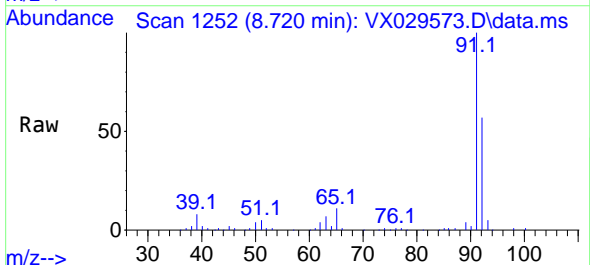


Tgt Ion: 98 Resp: 511700
 Ion Ratio Lower Upper
 98 100
 100 66.2 52.6 78.8

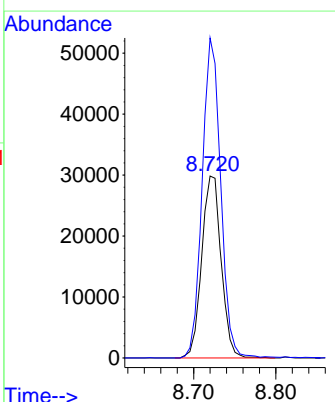
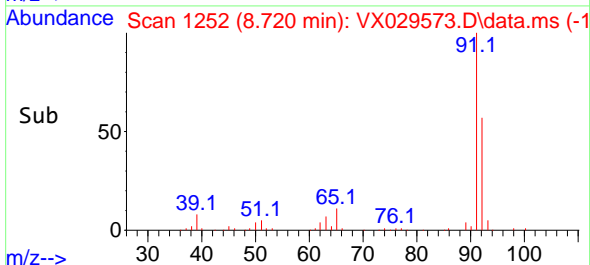
Manual Integrations
APPROVED
 Reviewed By :Semsettin Yesilyurt 06/23/2022
 Supervised By :Mahesh Dadoda 06/23/2022

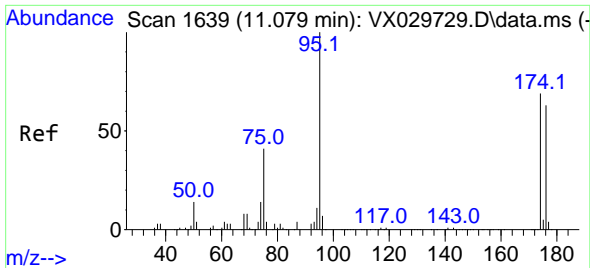


#52
 Toluene
 Concen: 6.527 ug/l
 RT: 8.720 min Scan# 1252
 Delta R.T. -0.000 min
 Lab File: VX029573.D
 Acq: 18 Jun 2022 16:36



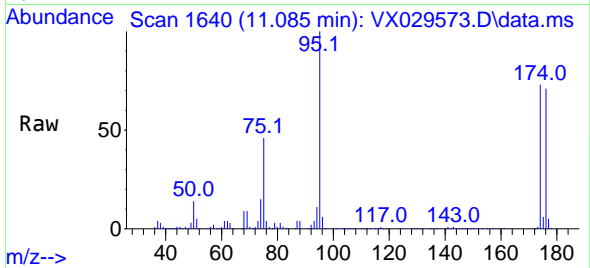
Tgt Ion: 92 Resp: 49004
 Ion Ratio Lower Upper
 92 100
 91 167.7 137.5 206.3





#62
 4-Bromofluorobenzene
 Concen: 47.205 ug/l
 RT: 11.085 min Scan# 1640
 Delta R.T. 0.000 min
 Lab File: VX029573.D
 Acq: 18 Jun 2022 16:36

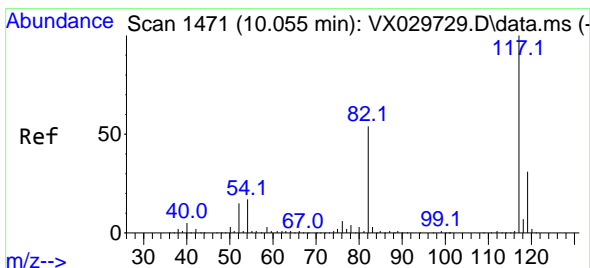
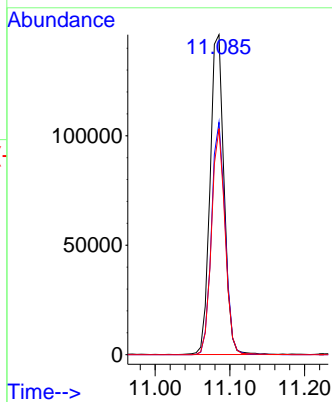
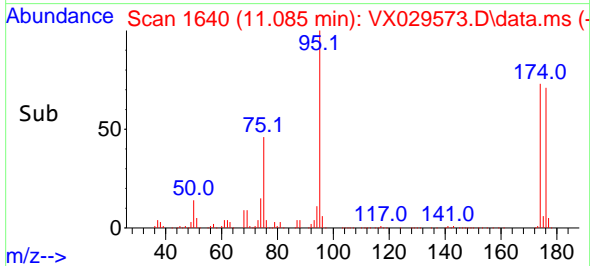
Instrument :
 MSVOA_X
 ClientSampleId :
 MW-17



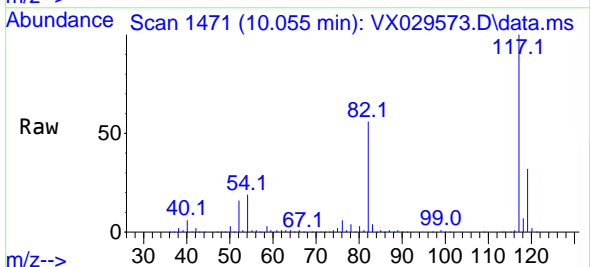
Tgt Ion: 95 Resp: 190060
 Ion Ratio Lower Upper
 95 100
 174 70.9 0.0 163.0
 176 68.3 0.0 155.0

Manual Integrations
APPROVED

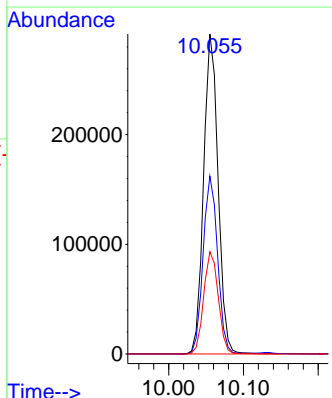
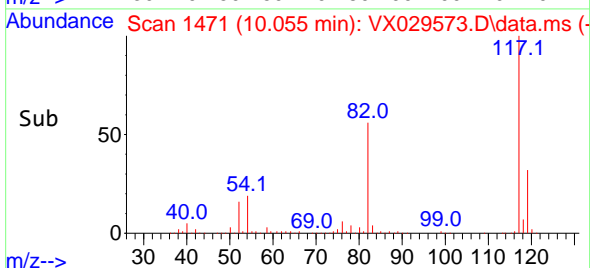
Reviewed By :Semsettin Yesilyurt 06/23/2022
 Supervised By :Mahesh Dadoda 06/23/2022

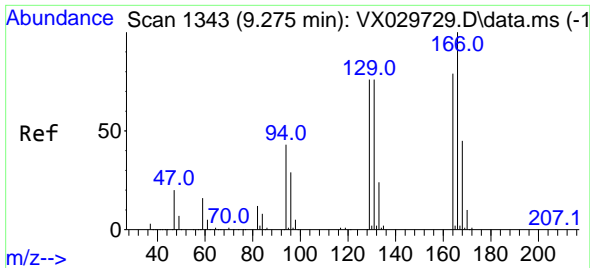


#63
 Chlorobenzene-d5
 Concen: 50.000 ug/l
 RT: 10.055 min Scan# 1471
 Delta R.T. -0.000 min
 Lab File: VX029573.D
 Acq: 18 Jun 2022 16:36



Tgt Ion:117 Resp: 391414
 Ion Ratio Lower Upper
 117 100
 82 55.6 41.8 62.8
 119 32.0 24.8 37.2





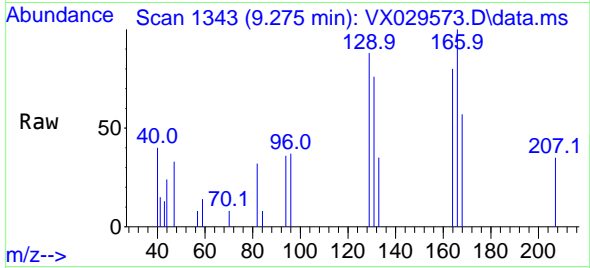
#64
 Tetrachloroethene
 Concen: 0.252 ug/l
 RT: 9.275 min Scan# 11
 Delta R.T. -0.000 min
 Lab File: VX029573.D
 Acq: 18 Jun 2022 16:36

Instrument :

MSVOA_X

Client Sample Id :

MW-17



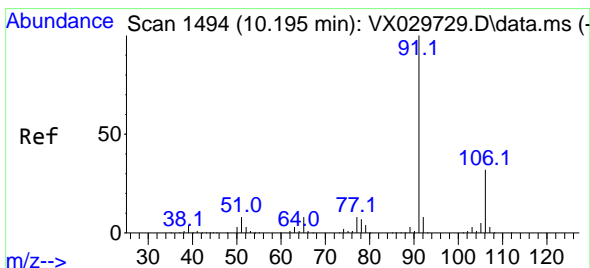
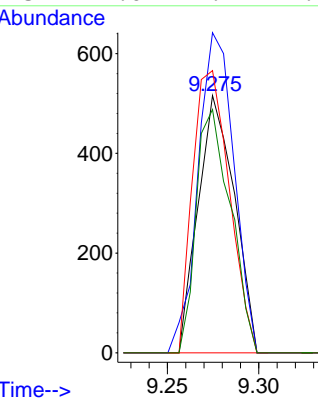
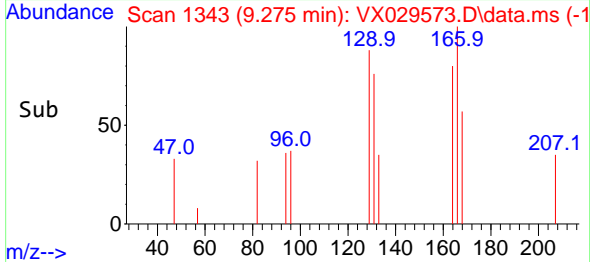
Tgt Ion:164 Resp: 711

Ion	Ratio	Lower	Upper
164	100		
166	124.4	101.2	151.8
129	109.7	73.0	109.4
131	94.6	74.2	111.2

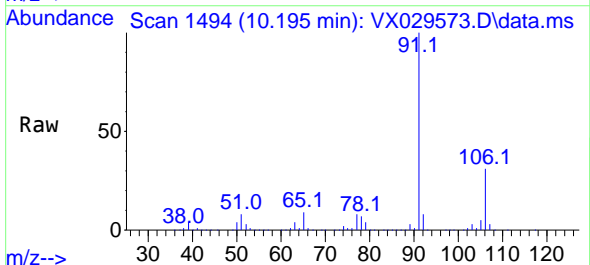
Manual Integrations

APPROVED

Reviewed By :Semsettin Yesilyurt 06/23/2022
 Supervised By :Mahesh Dadoda 06/23/2022

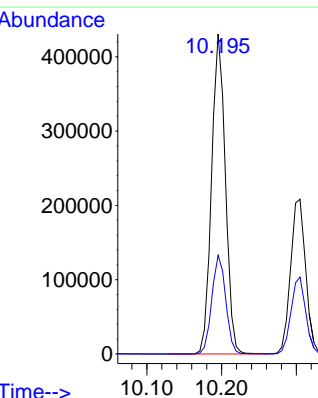
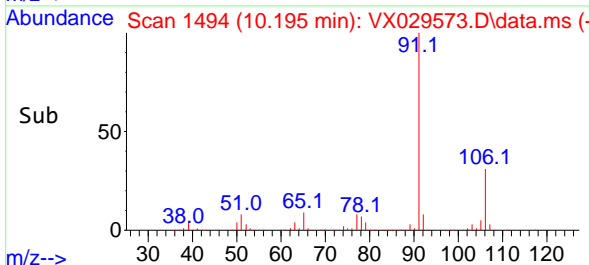


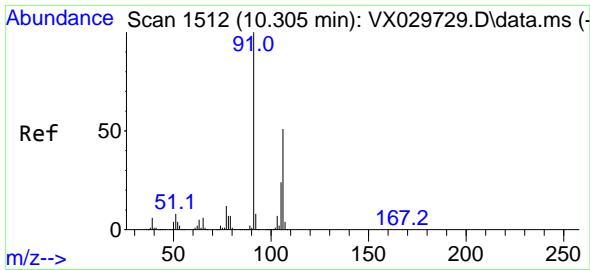
#67
 Ethyl Benzene
 Concen: 39.923 ug/l
 RT: 10.195 min Scan# 1494
 Delta R.T. 0.000 min
 Lab File: VX029573.D
 Acq: 18 Jun 2022 16:36



Tgt Ion: 91 Resp: 551577

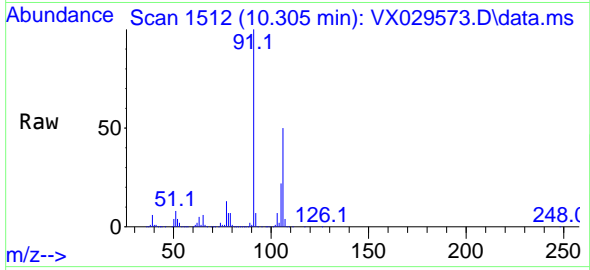
Ion	Ratio	Lower	Upper
91	100		
106	30.8	24.6	36.8





#68
 m/p-Xylenes
 Concen: 26.272 ug/l
 RT: 10.305 min Scan# 1512
 Delta R.T. -0.000 min
 Lab File: VX029573.D
 Acq: 18 Jun 2022 16:36

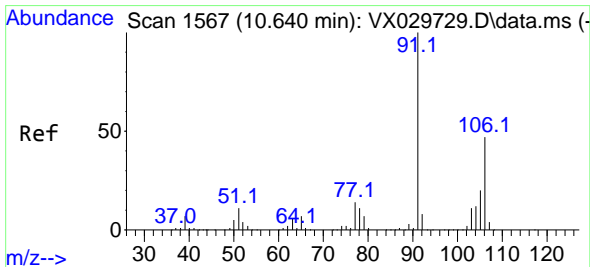
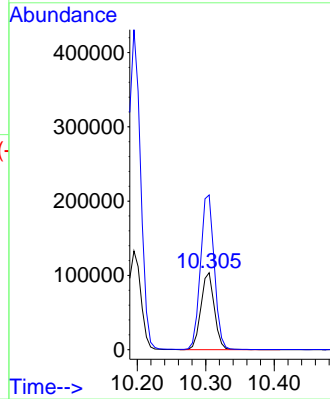
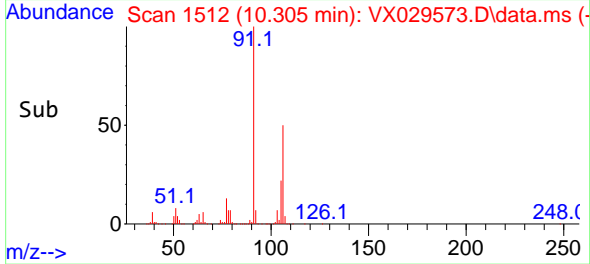
Instrument : MSVOA_X
 ClientSampleId : MW-17



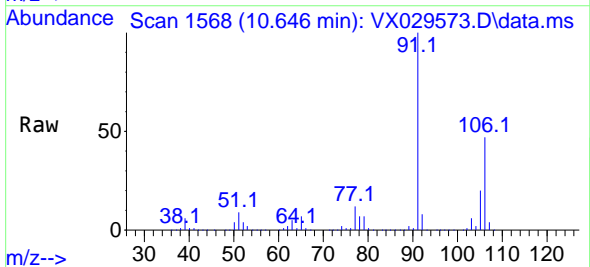
Tgt Ion:106 Resp: 14155
 Ion Ratio Lower Upper
 106 100
 91 205.9 160.4 240.6

Manual Integrations
 APPROVED

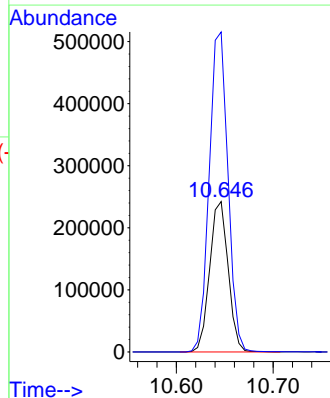
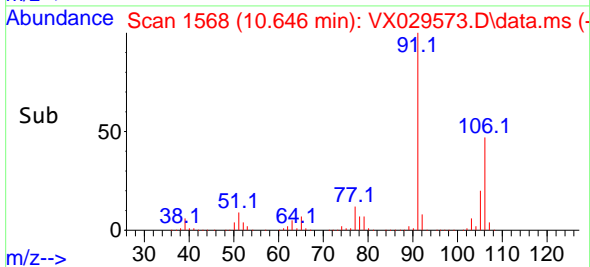
Reviewed By :Semsettin Yesilyurt 06/23/2022
 Supervised By :Mahesh Dadoda 06/23/2022

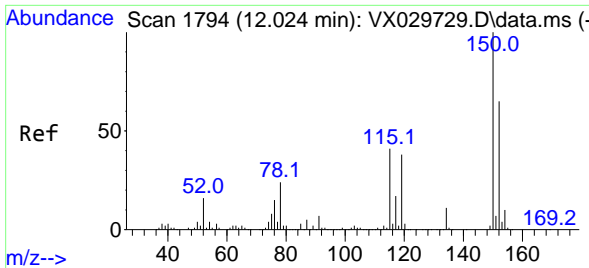


#69
 o-Xylene
 Concen: 60.644 ug/l
 RT: 10.646 min Scan# 1568
 Delta R.T. 0.000 min
 Lab File: VX029573.D
 Acq: 18 Jun 2022 16:36



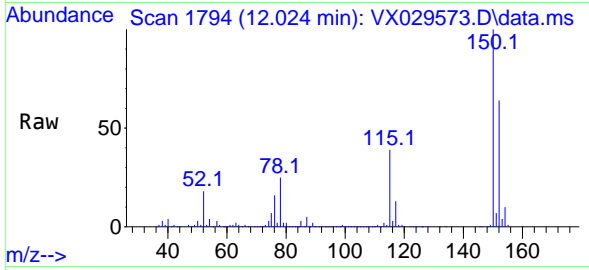
Tgt Ion:106 Resp: 322823
 Ion Ratio Lower Upper
 106 100
 91 215.9 106.1 318.1





#72
 1,4-Dichlorobenzene-d4
 Concen: 50.000 ug/l
 RT: 12.024 min Scan# 17833
 Delta R.T. -0.000 min
 Lab File: VX029573.D
 Acq: 18 Jun 2022 16:36

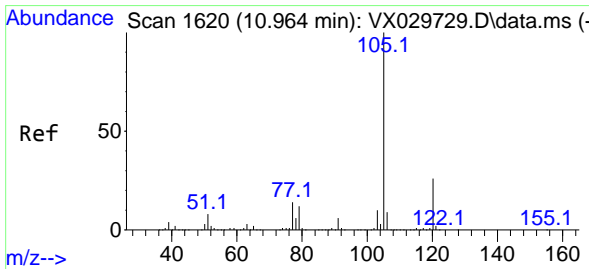
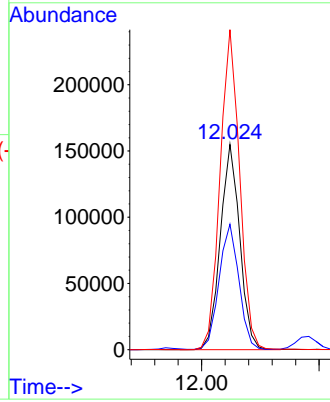
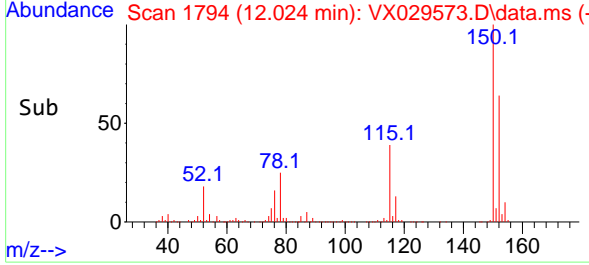
Instrument : MSVOA_X
 ClientSampleId : MW-17



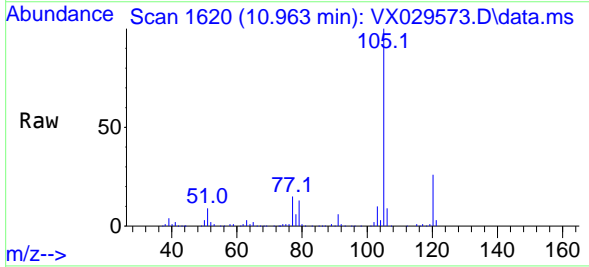
Tgt Ion:152 Resp: 17833
 Ion Ratio Lower Upper
 152 100
 115 62.0 37.5 112.7
 150 156.9 0.0 338.2

Manual Integrations
APPROVED

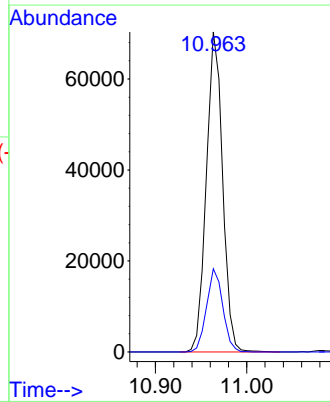
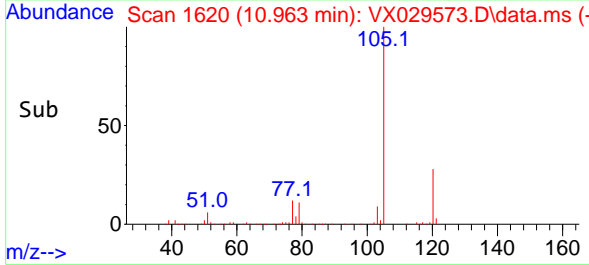
Reviewed By :Semsettin Yesilyurt 06/23/2022
 Supervised By :Mahesh Dadoda 06/23/2022

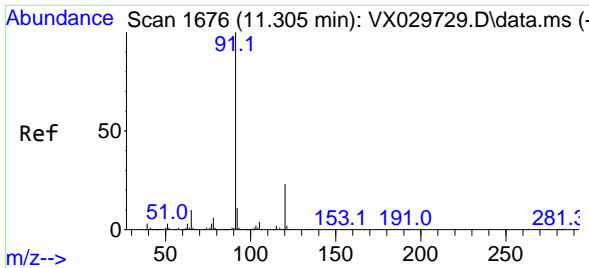


#73
 Isopropylbenzene
 Concen: 6.475 ug/l
 RT: 10.963 min Scan# 1620
 Delta R.T. 0.000 min
 Lab File: VX029573.D
 Acq: 18 Jun 2022 16:36



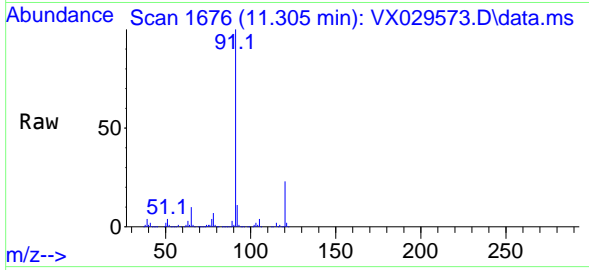
Tgt Ion:105 Resp: 86582
 Ion Ratio Lower Upper
 105 100
 120 26.0 13.5 40.5





#78
 n-propylbenzene
 Concen: 15.519 ug/l
 RT: 11.305 min Scan# 10
 Delta R.T. -0.000 min
 Lab File: VX029573.D
 Acq: 18 Jun 2022 16:36

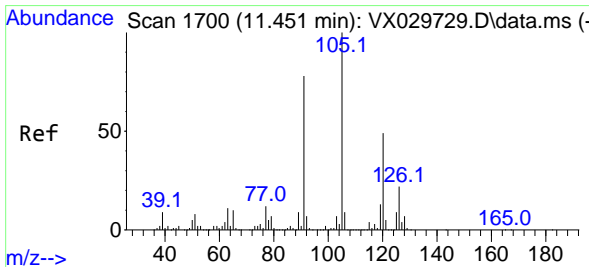
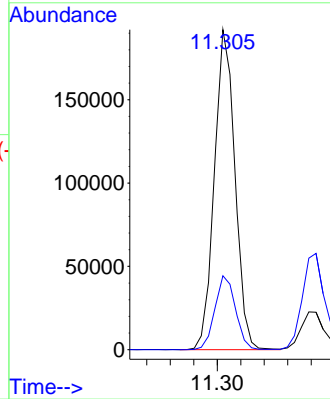
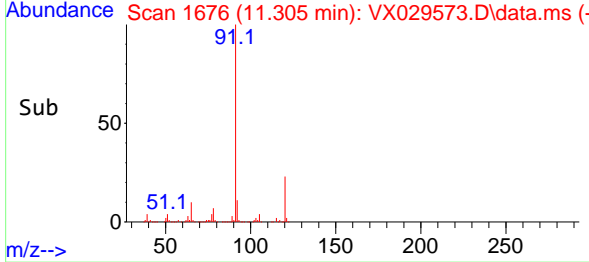
Instrument :
 MSVOA_X
 ClientSampleId :
 MW-17



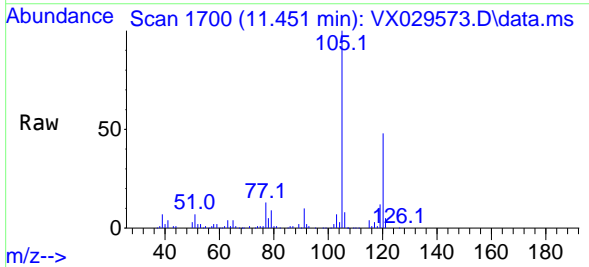
Tgt Ion: 91 Resp: 23370
 Ion Ratio Lower Upper
 91 100
 120 23.2 11.6 34.8

Manual Integrations
 APPROVED

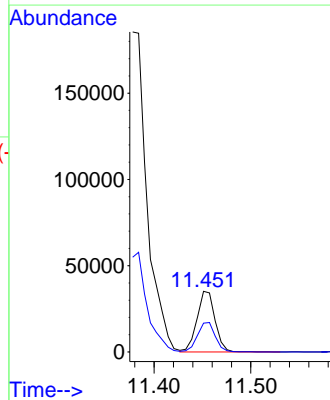
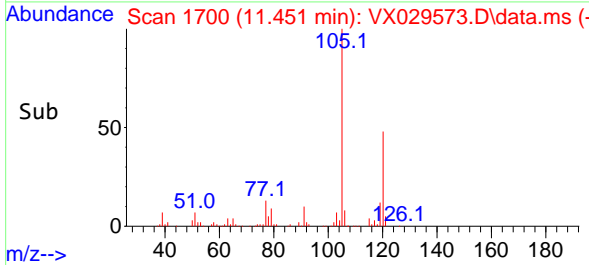
Reviewed By :Semsettin Yesilyurt 06/23/2022
 Supervised By :Mahesh Dadoda 06/23/2022

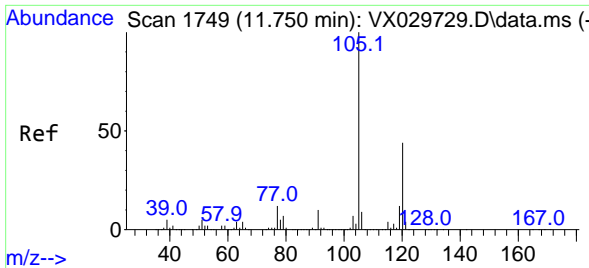


#80
 1,3,5-Trimethylbenzene
 Concen: 4.052 ug/l
 RT: 11.451 min Scan# 1700
 Delta R.T. 0.000 min
 Lab File: VX029573.D
 Acq: 18 Jun 2022 16:36



Tgt Ion:105 Resp: 45624
 Ion Ratio Lower Upper
 105 100
 120 48.4 24.3 72.9





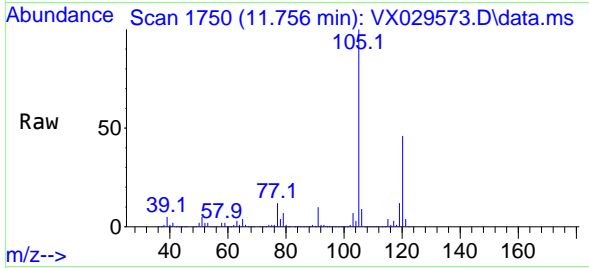
#84
 1,2,4-Trimethylbenzene
 Concen: 128.877 ug/l
 RT: 11.756 min Scan# 1173
 Delta R.T. -0.000 min
 Lab File: VX029573.D
 Acq: 18 Jun 2022 16:36

Instrument :

MSVOA_X

ClientSampleId :

MW-17

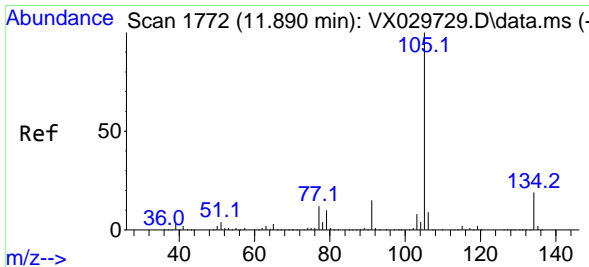
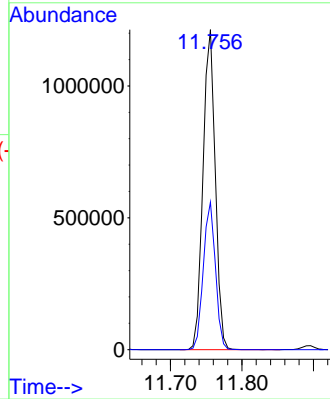
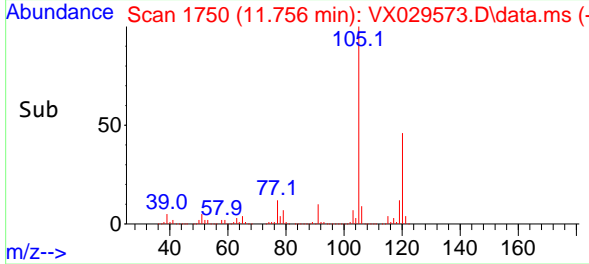


Tgt Ion:105 Resp: 144740
 Ion Ratio Lower Upper
 105 100
 120 45.5 22.6 67.8

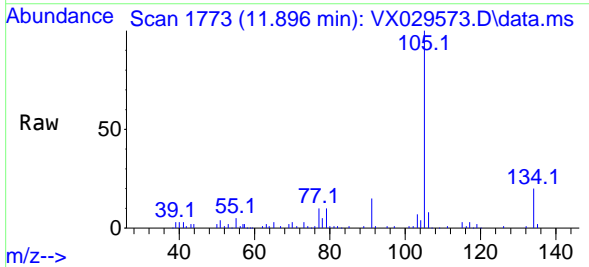
Manual Integrations

APPROVED

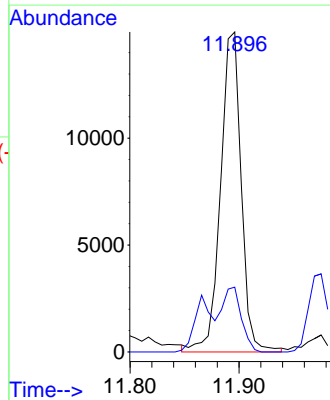
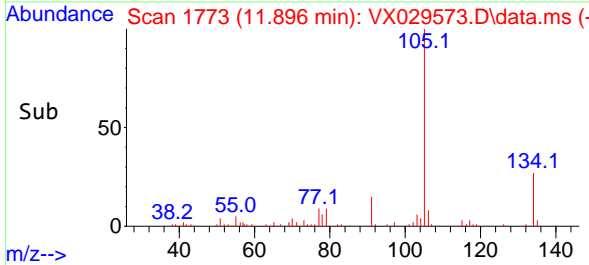
Reviewed By :Semsettin Yesilyurt 06/23/2022
 Supervised By :Mahesh Dadoda 06/23/2022

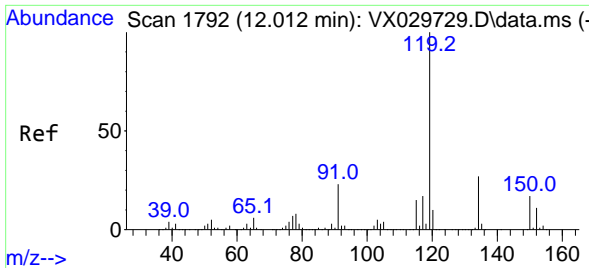


#85
 sec-Butylbenzene
 Concen: 1.451 ug/l m
 RT: 11.896 min Scan# 1773
 Delta R.T. 0.006 min
 Lab File: VX029573.D
 Acq: 18 Jun 2022 16:36



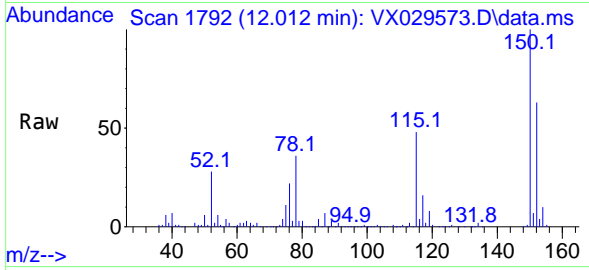
Tgt Ion:105 Resp: 19749
 Ion Ratio Lower Upper
 105 100
 134 0.0 10.2 30.4#





#86
 p-Isopropyltoluene
 Concen: 0.617 ug/l m
 RT: 12.012 min Scan# 1
 Delta R.T. -0.000 min
 Lab File: VX029573.D
 Acq: 18 Jun 2022 16:36

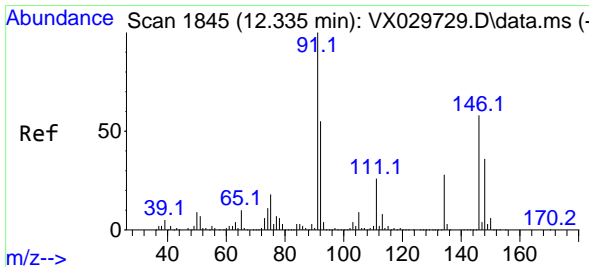
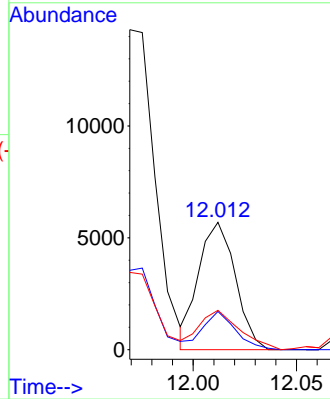
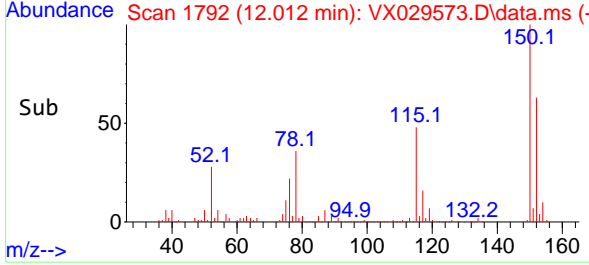
Instrument :
 MSVOA_X
 ClientSampleId :
 MW-17



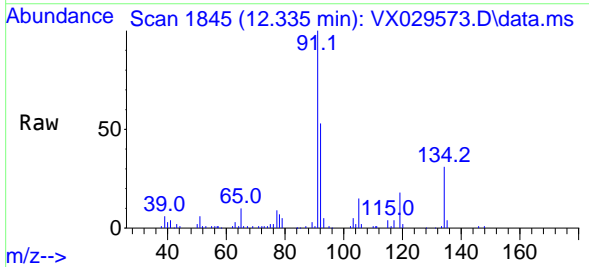
Tgt Ion:119 Resp: 7034
 Ion Ratio Lower Upper
 119 100
 134 65.2 13.0 39.0
 91 67.1 11.3 33.9

Manual Integrations
APPROVED

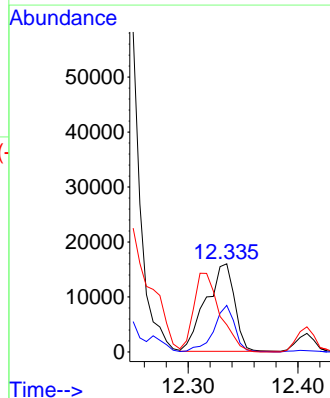
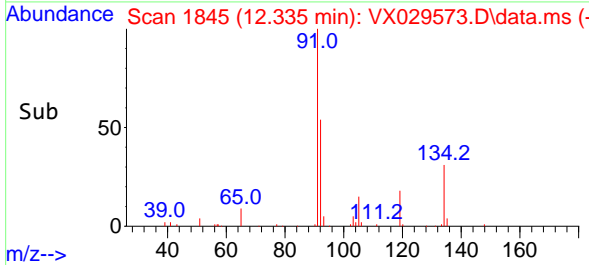
Reviewed By :Semsettin Yesilyurt 06/23/2022
 Supervised By :Mahesh Dadoda 06/23/2022

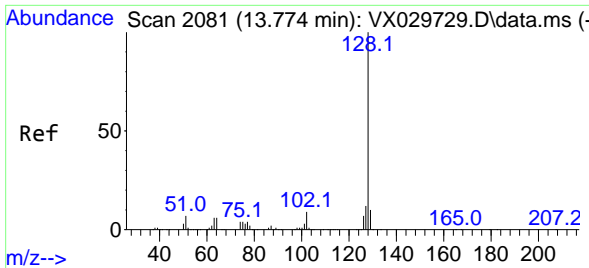


#89
 n-Butylbenzene
 Concen: 3.012 ug/l
 RT: 12.335 min Scan# 1845
 Delta R.T. 0.000 min
 Lab File: VX029573.D
 Acq: 18 Jun 2022 16:36



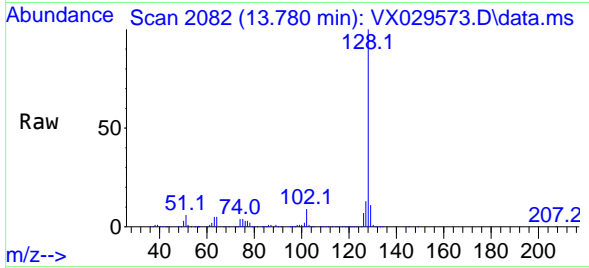
Tgt Ion: 91 Resp: 28959
 Ion Ratio Lower Upper
 91 100
 92 39.2 27.8 83.3
 134 0.0 13.3 39.8





#95
 Naphthalene
 Concen: 35.523 ug/l
 RT: 13.780 min Scan# 2082
 Delta R.T. 0.006 min
 Lab File: VX029573.D
 Acq: 18 Jun 2022 16:36

Instrument : MSVOA_X
 Client SampleId : MW-17



Tgt Ion:128 Resp: 444364
 Ion Ratio Lower Upper
 128 100
 127 12.7 10.2 15.4
 129 11.1 8.7 13.1

Manual Integrations
 APPROVED

Reviewed By :Semsettin Yesilyurt 06/23/2022
 Supervised By :Mahesh Dadoda 06/23/2022

